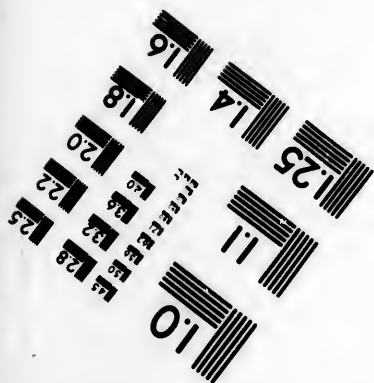
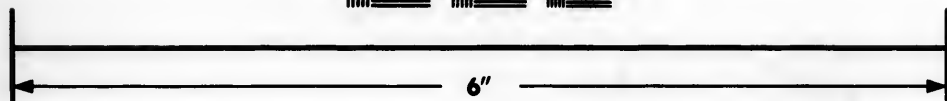
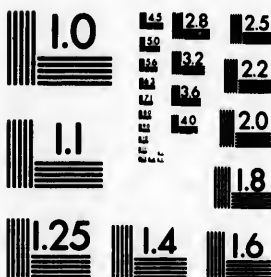


**IMAGE EVALUATION  
TEST TARGET (MT-3)**



**Photographic  
Sciences  
Corporation**

23 WEST MAIN STREET  
WEBSTER, N.Y. 14580  
(716) 872-4503

**CIHM/ICMH  
Microfiche  
Series.**

**CIHM/ICMH  
Collection de  
microfiches.**



**Canadian Institute for Historical Microreproductions / Institut canadien de microreproductions historiques**

**© 1984**

Technical and Bibliographic Notes/Notes techniques et bibliographiques

The Institute has attempted to obtain the best original copy available for filming. Features of this copy which may be bibliographically unique, which may alter any of the images in the reproduction, or which may significantly change the usual method of filming, are checked below.

L'Institut a microfilmé le meilleur exemplaire qu'il lui a été possible de se procurer. Les détails de cet exemplaire qui sont peut-être uniques du point de vue bibliographique, qui peuvent modifier une image reproduite, ou qui peuvent exiger une modification dans la méthode normale de filmage sont indiqués ci-dessous.

- Coloured covers/  
Couverture de couleur
- Covers damaged/  
Couverture endommagée
- Covers restored and/or laminated/  
Couverture restaurée et/ou pelliculée
- Cover title missing/  
Le titre de couverture manque
- Coloured maps/  
Cartes géographiques en couleur
- Coloured ink (i.e. other than blue or black)/  
Encre de couleur (i.e. autre que bleue ou noire)
- Coloured plates and/or illustrations/  
Planches et/ou illustrations en couleur
- Bound with other material/  
Relié avec d'autres documents
- Tight binding may cause shadows or distortion along interior margin/  
La reliure serrée peut causer de l'ombre ou de la distortion le long de la marge intérieure
- Blank leaves added during restoration may appear within the text. Whenever possible, these have been omitted from filming/  
Il se peut que certaines pages blanches ajoutées lors d'une restauration apparaissent dans le texte, mais, lorsque cela était possible, ces pages n'ont pas été filmées.

- Coloured pages/  
Pages de couleur
- Pages damaged/  
Pages endommagées
- Pages restored and/or laminated/  
Pages restaurées et/ou pelliculées
- Pages discoloured, stained or foxed/  
Pages décolorées, tachetées ou piquées
- Pages detached/  
Pages détachées
- Showthrough/  
Transparence
- Quality of print varies/  
Qualité inégale de l'impression
- Includes supplementary material/  
Comprend du matériel supplémentaire
- Only edition available/  
Seule édition disponible
- Pages wholly or partially obscured by errata slips, tissues, etc., have been refilmed to ensure the best possible image/  
Les pages totalement ou partiellement obscurcies par un feuillet d'errata, une pelure, etc., ont été filmées à nouveau de façon à obtenir la meilleure image possible.

Additional comments: / Docket title page is bound in as last page in book but filmed as first page on fiche.  
Commentaires supplémentaires:

This item is filmed at the reduction ratio checked below/  
Ce document est filmé au taux de réduction indiqué ci-dessous.

10X	14X	18X	22X	26X	30X
<input type="checkbox"/>	<input type="checkbox"/>	<input type="checkbox"/>	<input type="checkbox"/>	<input checked="" type="checkbox"/>	<input type="checkbox"/>
12X	16X	20X	24X	28X	32X

The copy filmed here has been reproduced thanks to the generosity of:

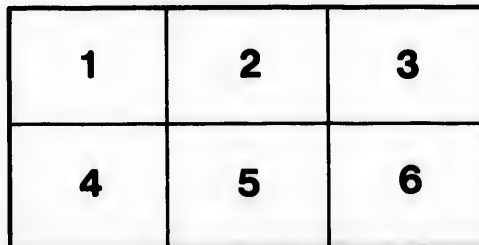
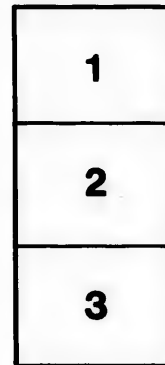
Library of the Public  
Archives of Canada

The images appearing here are the best quality possible considering the condition and legibility of the original copy and in keeping with the filming contract specifications.

Original copies in printed paper covers are filmed beginning with the front cover and ending on the last page with a printed or illustrated impression, or the back cover when appropriate. All other original copies are filmed beginning on the first page with a printed or illustrated impression, and ending on the last page with a printed or illustrated impression.

The last recorded frame on each microfiche shall contain the symbol  $\rightarrow$  (meaning "CONTINUED"), or the symbol  $\nabla$  (meaning "END"), whichever applies.

Maps, plates, charts, etc., may be filmed at different reduction ratios. Those too large to be entirely included in one exposure are filmed beginning in the upper left hand corner, left to right and top to bottom, as many frames as required. The following diagrams illustrate the method:



L'exemplaire filmé fut reproduit grâce à la générosité de:

La bibliothèque des Archives  
publiques du Canada

Les images suivantes ont été reproduites avec le plus grand soin, compte tenu de la condition et de la netteté de l'exemplaire filmé, et en conformité avec les conditions du contrat de filmage.

Les exemplaires originaux dont la couverture en papier est imprimée sont filmés en commençant par le premier plat et en terminant soit par la dernière page qui comporte une empreinte d'impression ou d'illustration, soit par le second plat, selon le cas. Tous les autres exemplaires originaux sont filmés en commençant par la première page qui comporte une empreinte d'impression ou d'illustration et en terminant par la dernière page qui comporte une telle empreinte.

Un des symboles suivants apparaîtra sur la dernière image de chaque microfiche, selon le cas: le symbole  $\rightarrow$  signifie "A SUIVRE", le symbole  $\nabla$  signifie "FIN".

Les cartes, planches, tableaux, etc., peuvent être filmés à des taux de réduction différents. Lorsque le document est trop grand pour être reproduit en un seul cliché, il est filmé à partir de l'angle supérieur gauche, de gauche à droite, et de haut en bas, en prenant le nombre d'images nécessaire. Les diagrammes suivants illustrent la méthode.

671  
No 6

INSTRUCTIONS to the Honorable Peter  
Robinson, as Surveyor General of  
Woods in Upper Canada, dated 18th  
July, 1827.

R. STANTON, Printer.

1827

1891  
No 6

**INSTRUCTIONS to the Honorable Peter**  
S. ... General of

1891

6071

Copy

---

*Instructions from the Right Honorable the Lords Commissioners of His Majesty's Treasury to Peter Robinson Esquire, the Surveyor General of His Majesty's Woods and Forests in the Province of Upper Canada.*

**WHEREAS** His Majesty, by a Commission bearing date the Seventeenth day of July 1827, did nominate and appoint you, the said Peter Robinson, to the office and trust of Surveyor General of His Majesty's Woods and Forests in the Province of Upper Canada, and did strictly enjoin you to follow such orders and directions as you might from time to time receive from the Commissioners of His Majesty's Treasury, or from one of His Majesty's principal Secretaries of State, or from the Governor or Officer Administering the Government of the Province of Upper Canada for the time being.

**NOW WE**, the Commissioners of His Majesty's Treasury, do hereby enjoin and require you to govern yourself in the execution of the Duties of your said Office by the following Instructions :—

**THAT** you do forthwith repair to Canada, and report your arrival to the Governor-in-Chief, or Officer Administering the Government, and lay before him His Majesty's Commission appointing you to the said Office and these our Instructions, for the guidance of your conduct in the execution of the Duties thereof.

**THAT** you do immediately upon your arrival enter into Security to the satisfaction of the Governor or Officer Administering the Government, yourself in Five Thousand Pounds, and two Sureties in Two Thousand Five Hundred Pounds each, that you will diligently and faithfully perform the duties of your said Office, and duly account for, and pay over, all monies which may come to your hands, in the due execution of the said Office.

**THAT** as soon as possible after your arrival, you do proceed to make a Survey of the Woods and Forests within the said Province, and ascertain in what Districts there may be any considerable growth of Mastig or other Timber fit for the use of His Majesty's Navy; and also in what District there may be any considerable quantity of other description of Timber, and that you do make an Annual Report of such Survey to us, or the Commissioners of the Treasury, and to the Governor or Officer Administering the Government of the Province of Upper Canada.

**THAT** you do from time to time, whenever required by the Governor, or Officer Administering the Government, or by the Commissioner or Commissioners appointed for the Sale of Crown Lands in the Province of Upper Canada, grant a Certificate stating whether any Lot or Lots of Land proposed to be Sold by him the said Commissioner contains any considerable quantity or growth of Mastig or other Timber fit for the use of His Majesty's Navy, or any considerable quantity of valuable Timber fit for any other purpose.

**AND WHEREAS**, much of the Timber standing and growing on the waste and ungranted Lands within the said Province may not be fit and proper for the use of His Majesty's Navy, and it may be expedient that permission should be granted to His Majesty's Subjects to fell the same.—We do therefore require and enjoin you that you



## 2

do in the month of May in each year, make a Report to the Governor, or Officer Administering the Government, stating the Districts in which it may appear to you advisable that Licences should be granted to such of His Majesty's Subjects as may be desirous of Cutting Timber not fit for His Majesty's Navy, specifying the quantities which in your judgment may be fit to be Cut in each District, and the quantities for which you would recommend that Licences should be granted in the then ensuing season.

THAT upon the Governor, or Officer Administering the Government in Upper Canada, signifying to you that he approves of Licences being granted for Cutting Timber in all or any of these Districts, you will proceed to grant and dispose of Licences for Cutting such Timber, not exceeding the quantity to be specified by him for each District, in the following manner:—

THAT in the month of June in each year, you will cause public notices to be given in the York Gazette, and in some other Newspaper circulating in the Province, as also, in such other manner as may appear best adapted for general information, that you propose in the month of August following, to offer for Sale by Public Auction at York, or such other place as may be named in the Advertizement, Licences to Cut Timber on the Waste or Ungranted Lands of the Crown, in certain Districts of the Province of Upper Canada.

THAT each Licence be for a quantity not exceeding 2000 feet, and the upset prices will be as follows:—

Oak, per 1000 feet,	£4 3 4
Ash, Elm, and Beech, do.	2 10 0
Red Pine, do.	3 0 0
White Pine, do.	1 10 0
Staves, per Standard, 1000,	4 0 0
Handspikes, do.	1 0 0
West Indian Staves, and other Timber, per 1000 feet,	1 0 0

THAT no Licence whatever be sold under these prices, and that no Timber be permitted to be Cut upon Waste or Ungranted Lands without such Licence.

THAT the Conditions of the Licence be, that Timber be Cut within nine months from the date; and if not Cut within that time, the Licence to be void.

THAT the purchasers of the Licence be required to enter into a Bond with one sufficient Security, that they will pay into the hands of the Receiver General of Upper Canada, for the Timber which they may Cut under such Licence within fifteen months from its date, at the rate at which the same may have been purchased.

That you do, with the approbation of the Governor, or Officer Administering the Government, appoint, by a writing under your Hand and Seal, one or more Measurers of Timber in each District, to make and certify to you the quantity of Timber Cut under each Licence.

THAT you do, immediately after each Sale, furnish to the Auditor of Provincial Accounts a return of all Licences sold; and immediately after the termination of the Cutting Season, that you do furnish to the Receiver General and to the Auditor

licer  
you  
may  
uan-  
anti-  
then

pper  
tting  
e of  
l by

o be  
nce,  
tion,  
Alic-  
nces  
riets

pset

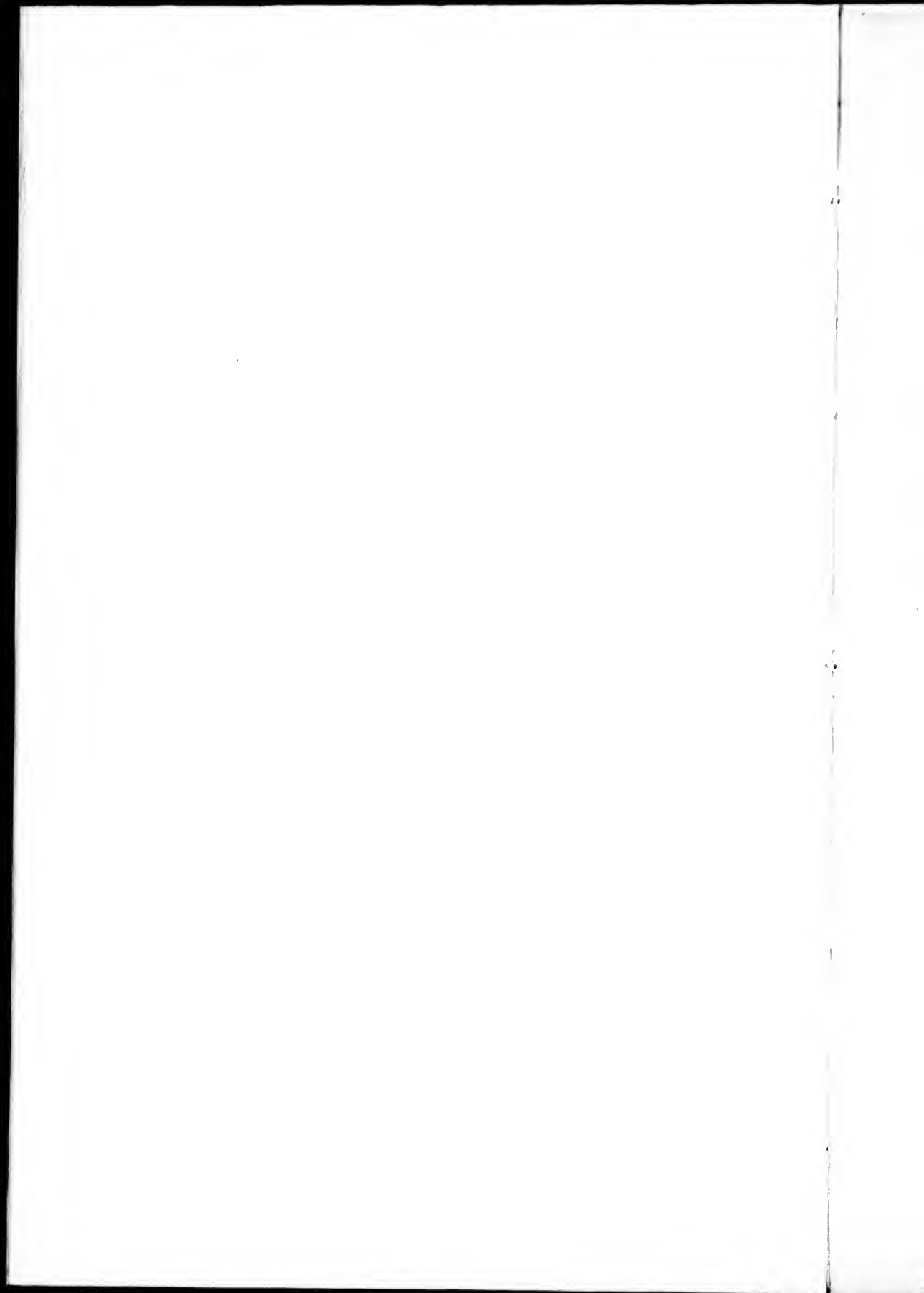
e be

nths

one  
l of  
a fit-  
sed.

the  
ten-  
'im-

ncial  
n of  
litor



of Provincial Accounts, a return of the quantity Cut under each Licence, as certified to you by the measurers, together with a statement of the sum due and to be paid to the Receiver General in respect of each Licence.

THAT you be authorized to incur contingent expenses in the execution of your office, not exceeding the following limits, viz:

Wages to Measurers, net, . . . . .	12s. 6d. per day.
Rent of an Office, . . . . .	£25 per annum.
For Fuel, . . . . .	10 per annum.
Messenger, . . . . .	25 per annum.

Pay of Clerks, Assistants, &c. as may be necessary, and as the Governor, or Officer Administering the Government, may deem reasonable; provided, that the whole of such expenses do not, in any year, exceed one-sixth part of the net amount which may in such year be paid to the Receiver General of the Province in respect of such Licences.

THAT you do annually lay before the Governor, or Officer Administering the Government, an account of the contingent expenses of every description mentioned in the foregoing articles of your Instructions which may be incurred by you, and provided he shall be satisfied therewith, and that the same does not exceed one-sixth part of the net amount which may be paid into the hands of the Receiver General of the Province in respect to such Licences, the said Governor-in-Chief will be authorized to issue his Warrant requiring the Receiver General, out of the net produce of such Licences, to pay you the amount.

THAT immediately after the first January in each year, you do transmit to Us, or to the Commissioners of His Majesty's Treasury for the time being, an account specifying the number of Licences which may have been granted by you in the preceding year, and the quantity of Timber cut in the same time, together with a copy of your contingent account, to be rendered to the Governor, or Officer Administering the Government, in pursuance of the preceding articles of your Instructions, and a statement of the sums received by you for Salary and Commission of the said Office.

And further, that in the execution of the said Office you do obey all such orders and directions as you may from time to time receive from the Commissioners of the Treasury, or one of His Majesty's Principal Secretaries of State, or from the Governor, or Officer Administering the Government for the time being.

*Whitchall, Treasury Chambers, }*  
*the 18th day of July, 1827. }*

(Signed)

MACNAGHTEN,  
J. LEVESON GOWER,  
ELIOT.

Instructions to Peter Robinson Esq. Surveyor General of His Majesty's Woods and Forests in the Province of Upper Canada.

*Ed. M. G. J.*  
*20th July*  
*in 1827*

