

# THE COMMERCIAL

FINANCE AND INSURANCE REPORT

Subscription, \$2.00 per Annum in Advance.

Established 1882.

Published Weekly.

Vol. 20

WINNIPEG, CANADA OCTOBER 5, 1901.

No. 5

## Moore's Stratheona Hot Blast



Cast top, wood, air tight; steel top, wood, air tight; patent corrugated linings, used in all Moore air tight stoves. We have in stock at Winnipeg the most complete and up-to-date line of Air Tights on the market to-day.

Send for Catalogue and prices before purchasing.

**MERRICK, ANDERSON & CO.**  
WINNIPEG, MANITOBA.

## FLOUR

HIGHEST AWARDS at home and abroad:

WINNIPEG EXHIBITION, PARIS EXHIBITION.



The flour manufactured by the Hudson's Bay Company has received the Grand Prize at the Paris Exhibition and the highest awards at the Winnipeg Industrial Exhibition. All the flour made by the Company is from specially selected wheat.

**HUDSON'S BAY CO'Y**  
MANUFACTURERS OF

**Donim Pants,  
Overalls,  
Shirts  
and Smocks**

of all Descriptions.  
Mail Orders receive Prompt Attention.

**Emerson & Hague**  
WINNIPEG

**CODVILLE & CO.**  
Wholesale Grocers.



—Packers of—

**CELEBRATED GOLD STANDARD TEAS**  
Coffee, Baking Powder and Spices.

**BANNATYNE AVE. E., WINNIPEG**  
Branches: BRANDON and CALGARY.

**BROMLEY & CO.**



Tents  
Awnings and  
Mattress  
Factory

Cor. Princess and Alexander St., Winnipeg

For Export  
**Senega Root**

**J. McLEOD HOLIDAY**  
178 McDermott Street,  
WINNIPEG

Write for quotations.

For ..

**Fall and Winter  
Footwear**

Send us your orders

Our Stock is large in leather goods, flannel lined felt boots, mitts, moccasins, overshoes and rubbers. Everything required in the shoe line.

Letter orders receive prompt and careful attention.

**THOS. RYAN**  
WHOLESALE BOOTS AND SHOES  
WINNIPEG

## Granby Rubbers



WEAR LIKE IRON

←→→

We can fill your orders without delay.

Send for catalogue.

**THE AMES HOLDEN CO. Ltd.**  
WINNIPEG.

**The Preserving Season**

Is now on. Send us your orders for FRUIT; they shall receive prompt attention.

Highest price paid for Butter and Eggs

**LOCK BROS. & CO.**  
WINNIPEG Wholesale Fruit  
and Produce  
RAT PORTAGE

## Carpets

We have a complete stock, cheap full of value, comprising 58, 34, 44 carpets, in new colorings and designs.

We have them to retail from 12½¢ to \$1.50 a yard.

Have you seen our 2x3 and 3x3 squares to retail at \$2 and \$3 each. It's no trouble to sell them.

**THE GAULT  
BROS. CO. Ltd.**  
Importers and  
Manufacturers  
MONTREAL WINNIPEG VANCOUVER

+++++  
**Your Order**  
For any quantity of  
**GLOVES  
AND  
MITTS**  
+++++

will receive our best attention  
WRITE US TO-DAY FOR YOUR  
REQUIREMENTS.  
Our Stock includes LINED AND  
UNLINED SARANAC HORSE  
SHOE, HUCK, KID and MOCHA  
Prices are small, and range from  
**\$2.50 to \$27.00**  
Samples sent on application.

**R. J. WHITLA & CO. Ltd.**  
Wholesale Dry Goods  
Corner McDermott and Arthur St.  
WINNIPEG

+++++

**THE RUBLEE  
FRUIT CO., Limited**  
Importers of  
**Foreign and Domestic  
Green and Dried  
Fruits, Nuts, Etc.**  
191 Beaudry Street, WINNIPEG, MAN.  
12th Street, BRANDON, MAN.

**THE BEST IS THE CHEAPEST**  
Our MANILLA and VIOLET  
**WRAPPING PAPERS**  
AND  
**PAPER BAGS**  
ARE THE BEST IN THE MARKET.  
Same old lines improved in quality to  
keep up to date.  
WHY NOT HAVE THE BEST?

**McALLISTER & WATTS**  
43 Roric St., Winnipeg.  
East of Post Office.

*WINNIPEG*  
**Business College**  
Cor. Portage Ave. and Fort St.  
**PREPARE**  
For the active duties of a business life by  
taking a course at the Winnipeg Business  
college. Annual catalogue sent free to any  
address.  
G. W. DONALD, Secretary.

# To Wholesale Produce Merchants

Having decided to discontinue the Produce Department of our business at Winnipeg, which consists of Butter, Cheese, Eggs and Poultry, we offer for sale stock and good will of this BRANCH OF OUR BUSINESS, which has been established 16 years.

We have no hesitation in saying ours is, if not the best, one of the best established Produce connections in Western Canada. With the rapid development of this Western country, there is a good opening here for a man who understands the handling of farm produce to step into a large, well established business, with every opportunity to increase it to very large proportions.

Good reasons given for selling. Full particulars on application to our Winnipeg office.

## J. Y. GRIFFIN & CO.

Pork Packers and Commission Merchants  
WINNIPEG

## On and after the 7th Inst.

We will pay 16c nett for freshly gathered Eggs delivered at Winnipeg and for sweet Dairy Butter in pound lots 12 to 14 cents.

## A Snap in Apples



Will make a cut of 25c per bbl. on St. Lawrence, Jennings and other equally good varieties in order to make space for Winters. Lots of less than 5 bbls. now \$4.25. Five bbls. or more, \$4.10.

## R. A. ROGERS & COMPANY Ltd.

WINNIPEG

F. D. ROE, President

R. ABERNETHY, Vice-President

T. F. PATERSON, Sec. Treas.

## The Canadian Pacific Lumber Company Limited



Manufacturers of and Wholesale  
Dealers in All Classes of  
British Columbia

**LUMBER, LATH,  
SHINGLES,  
MOULDINGS, Etc.**

MANAGER

PORT MOODY, B.C.

CAPACITY: LUMBER—60,000 feet per Day; LATH—30,000; SHINGLES—100,000.

We have the largest dry kiln capacity of any mill in B.C.; also the largest amount of sheds, and these are well stocked with Manitoba lumber. We have seven planers and are prepared to ship promptly. We understand the requirements of Manitoba dealers. Send to us for your next car. F. V. TOWN, and JAMES MAYHOOD, Salesmen.

### Annual Meeting of the C.P.R.

Montreal, Oct. 2.—The annual meeting of the shareholders of the Canadian Pacific Railway company was held today, and the old board was re-elected unanimously.

In moving the adoption of the report, President Sir Thomas Shaughnessy directed attention to the excellent result of the operations of the past fiscal year, notwithstanding the loss of revenue resulting from the serious shrinkage in the grain crops of Northwestern Canada last autumn by unfavorable weather. The grain tonnage of Manitoba and the North-west was only about one-third that of 1899, and according to authentic reports, less than one-fifth the tonnage of the crop just harvested. A few years ago such a serious injury to the crops would have been disastrous in its effect on the company's revenue. Therefore the development of the other traffic in sufficient volume to materially reduce the comparative importance of the grain business as a factor in gross earnings is most gratifying.

As indicated in the annual report, land grant bonds amounting to \$128,500 were redeemed and cancelled since the last meeting. The directors expect to reduce the outstanding bonds a still larger amount during the current year. Land sales for the past three months have been 75 per cent. in excess of the corresponding period. Some of these sales are in large blocks.

The desirability of making provision for pensioning the officers and employees who after long service have become incapacitated by reason of advanced age, has suggested the propriety of asking for consent to set aside \$250,000 as the nucleus of a pension fund as soon as the directors have succeeded in formulating a feasible plan of administration. It is hoped this may be accomplished shortly, but the large number of employees and the varied conditions of the service make it necessary that the details of the scheme receive the gravest consideration before being put into operation.

The president expressed for the directors the appreciation of the zeal and fidelity of the officers and employees in the performance of their duty during, in some respects, a most trying year.

The leases of the Kootenay and Arrowhead railways, the Vancouver and Lulu Island railway and the British Columbia Southern railway were approved; also the traffic agreement between the Canadian Pacific, the Daluth, South Shore and Atlantic, and the Mineral Range railway. Issue of debenture stock to the amount of thirty miles of branch lines in Manitoba was authorized not to exceed \$100,000 a mile, and the sum of \$250,000 was set aside for a pension fund.

The meeting passed a resolution authorizing the issue of steamship bonds not to exceed \$400,000. The issue of steamship bonds to purchase the fourteen ships of the Pacific Navigation company and the building of three large new steamships, one for use on Lake Superior, one for coast traffic on the Pacific, and the third, which will be more beautiful and the largest of the three to add to the Empress line for trans-Pacific traffic.

At a meeting of the new board Sir William C. Van Horne was re-elected chairman of the board and Sir Thos. Shaughnessy president of the company.

The C. P. R. will acquire the steamers Charrner, Danube, Amur, Tees, Esouette, Princess Louise, B. F. Hubert, Queen City, Willapa, Beaver, Otter, Maude and Transfer now being operated by the Canadian Pacific Navigation company; the steamship Hattie now engaged in navigating the Pacific coast. A steamship will be constructed or acquired for the North Pacific coast trade similar in size, style and arrangement to the company's upper lake steamship Manitoba. A steamship for service between Vancouver and Victoria similar to the Charrner, and a steamship in style and arrangement similar to the company's steamships now engaged in the trans-Pacific trade, but of larger size and speed will be constructed.

## THE COMMERCIAL

The recognized authority on all matters pertaining to trade and progress in Western Canada, including that part of Ontario west of Lake Superior, the Provinces of Manitoba and British Columbia and the Territories.

**Twenty-fifth Year of Publication.**  
ISSUED EVERY SATURDAY.

Subscriptions—Canada and the United States, \$2.00 per annum in advance, or in arrears not paid, other countries, \$2.50 in advance.

Changes of advertisements or stops should be in not later than Thursday morning.

Advertisements purporting to be news matter, or which profess to express the opinion of this journal, will not be inserted. Office 210 McDermott St. Telephone 224.

D. W. BUCHANAN,  
Publisher.

The Commercial certainly enjoys a very much larger circulation among the business community of the west region (Green Bay, Lake Superior and the Pacific coast than any other paper in Canada. Daily receipts of the Commercial also reaches the leading wholesale, commission and manufacturing and financial houses of Eastern Canada.

WINNIPEG, OCTOBER 5, 1901.

### PROMISED REDUCTION IN GRAIN FREIGHTS.

According to the contract made between the provincial government of Manitoba and the Canadian Northern railway company, the railway was to have been completed through to Lake Superior in time to assist in moving the grain crops this year. October 1 was named as the date of the opening of the road. The important feature of the opening of this road, was to be the reduction in freight rates on grain, which was promised, as soon as the road was completed. Premier Roblin now announces that the company has been unable to complete the road and has asked for an extension of time. As the road will be completed as well a matter for conjecture, and it looks as though the promised reduction in freight rates is not likely to be of much service to the country for this season at least. As late as July 16 last, Premier Roblin announced publicly that a reduction of 2 cents would be made on grain freights on October 1, as the first instalment of the promised freight rates reductions by reason of the contract between the government and the company. The failure of these expectations is, of course, a great disappointment to the country. Notwithstanding official assurances, the belief has prevailed all along in best informed circles that the railway could not be completed through to Lake Superior in time to carry the grain before the close of navigation. It now turns out that this opinion was right.

### THAT ANTHRAX YARN.

The report that anthrax had broken out among the cattle on the western ranges, proves to be unfounded. The story originated in Toronto and is shrewdly suspected to have been started by interested parties there for selfish purposes. Dr. McEabeen, the Dominion veterinarian, has been looking into the matter and has allowed the statement to be made in his name in Winnipeg that the disease is confined to the sheep at Crème Lake and a few cattle which have been ranged there for the same land as the sheep. The presence of the disease in that locality has been known for some months, and was mentioned in this journal at the time it broke out. The Dominion government promptly quarantined the

infected district, and the disease has been well under control ever since.

To have a report of this character started at this time is a serious thing, and it is a matter for congratulation that it has been so promptly discredited. The cattle shipping season is now at its height and every day is precious to the western ranchers. To have the whole movement disorganized by a general quarantine such as the repeaters of this anthrax story demanded, would be disastrous, and as official statements now prove would be totally unnecessary. The Toronto people who set up this cry have not increased the esteem in which they are held here by their action in the matter.

### CARPENTERS' STRIKE OFF.

At a meeting of the striking carpenters of Winnipeg held in the Foresters' hall on Saturday evening last, it was resolved unanimously that the carpenters' strike be called off, and that contractors be notified that the same demands that have been made this year will be made again next spring at the opening of the season's work.

This brings to an end another disastrous strike. Disastrous alike to the men, the contractors and the public.

any credit upon them as contractors. Not only this but a good deal of work which would have been undertaken this fall had labor conditions been favorable has been postponed until next year and some of it may not be undertaken then if this dispute is to be revived again in the spring as seems more likely. The contractors have this to consider also and the thought brings them no consolation that eventually they will have to concede to these wages demands for the simple reason that they are just and fair in view of the wages paid to other tradesmen in the building line. The carpenter has to be quite as highly skilled in his way as any of them and has in addition to be provided at his own cost with an expensive outfit of tools. On the admission of the best of the contractors themselves the wages asked by the carpenters is not any more than should be paid for competent workmanship.

The loss to the general public from a strike like this is not so easily arrived at as it is more indirect and more widely scattered. That it is considerable, though there is no manner of doubt and the sufferers have not even the satisfaction, if it is any, of being parties to the dispute. Many innocent people who are perfectly willing to pay any kind of wages in order to get their work done are made to suffer when a

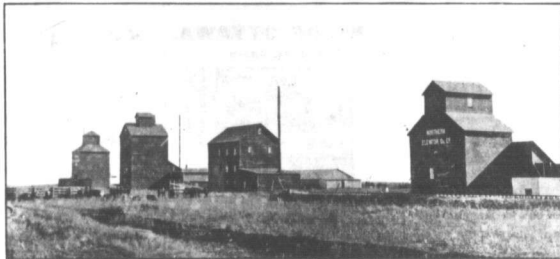
retain them in his possession or sell them is to break the law unless he can declare that they are for the private use as food of his own family.

### Seneca Root Higher.

An 18c advance in the price offered for some a root is one of the features of the week. At Minneapolis and St. Paul the price has advanced to the extent as will be seen by the advertisements in another part of this issue, where they are offering shippers 15 to 17c per pound instead of 34c as formerly, which is an advance of 17c. Local dealers have advanced their figures to a corresponding extent. The wet weather of this month largely responsible for the dearth in seneca, as it can only be dug when the ground is dry. The high wages being paid to laborers in other occupations has also helped to diminish the supply of seneca as more money could be made at these other lines. The sharp advances now noted should bring out quite a lot more root before the cold weather sets in. The price quoted for seneca here is about as high as it has ever been.

### Lake of the Woods Milling Co.

Montreal, Oct. 2.—The annual meeting of the shareholders of the Lake of the Woods Milling Co. was held to-day in the office of the company, Montreal. The annual report for the year was submitted to the shareholders and was found to be satisfactory. A dividend of 10 per cent. was declared on



Elevator and Mill at Baldur

strike of this kind is on and that without redress.

### THE CLOSE SEASON FOR DUCKS.

This year's experience has taught that the close season for wild ducks in Manitoba ends at least two weeks too soon. Dealers who handle these in any considerable numbers state that many of the birds offered to them in the way of trade during the earlier part of the present open season had been shot as young that they could hardly have been able to fly. Ducks shot at that age are not large enough to be desirable for table use and there cannot be any satisfaction in shooting them, so that all parties would benefit by an extension of the close season for another two weeks or say until the 15th of September instead of the 31st of August as the law now reads. If the interests of those who handle ducks in a trading way were taken into consideration in framing the law for their protection the present rule forbidding them to have ducks in their possession after the first day of January would be modified so as to permit the selling of ducks on hand when the season closes. As it is now any dealer who happens to have a stock of ducks on hand when the season closes must either destroy them or give them away at once. To

the paid-up capital of the company for the year ending August 31, 1901.

The following were elected directors for the ensuing year: Messrs. Robert Melghen, W. A. Hastings, R. B. Angus, R. G. Reid, F. S. Neighd, of Montreal; John Mather, of Ottawa, and G. V. Hastings, of Winnipeg. At a subsequent meeting of directors Robert Melghen was elected president and managing director; Mr. W. A. Hastings, vice-president and general manager; Mr. G. V. Hastings, manager at Winnipeg and general superintendent; Mr. F. E. Bray, secretary; Mr. F. S. Melghen, assistant secretary.

### Produce Business For Sale.

J. Y. Griffin & Co., pork packers and produce merchants of Winnipeg, make it known that they have decided to trade this week through the advertising columns of The Commercial, that they will retire from the produce business. The stock and goodwill of their produce business is offered for sale. It is now over sixteen years since Mr. Griffin first established this business and it has enjoyed uninterrupted success during that time. It is understood that the pork packing grade will hereafter occupy his undivided attention.

Last week's leather market at Boston showed a considerable accumulation of stocks. A steady volume of business is doing.

The Commercial has been favored with a neat little wall thermometer by Mr. D. Robinson, and a good dealer, Winnipeg, a number of which he is distributing among his patrons and friends.



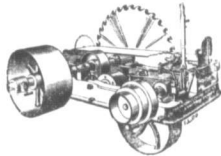


### Mr. Livemerchant:

If you want THAT SORTING ORDER you left over till the crop was assured IS DUE NOW. Our travellers are on the road with some of THE BEST SELLERS YOU HAVE EVER SEEN in CLOTHING MADE TO WEAR and bring the wearer back to you again for his next outfit.

### DONALD FRASER & CO.

Manufacturers of Fine Clothing  
 WHOLESALE  
 WINNIPEG—136 Princess Street  
 MONTREAL—303 St. Paul Street

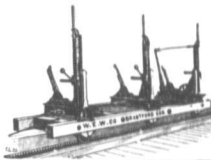


ENGINES AND BOILERS

Waterous Engine Works Co  
 WINNIPEG, MAN. AND VANCOUVER, B.C.

### SAW MILL MACHINERY

Shingle Mills and Planers  
 Edgers and Trimmers



**THE STUART-ARBUTHNOT MACHINERY CO., LIMITED**  
 SUCCESSORS TO STUART & HARPER  
 . . 784-786 Main Street, Winnipeg

HEAVY MACHINERY MERCHANTS  
 ELECTRICIANS

Sole Agents for:  
 "Leonard's" Engines and Boilers, "Brown's" Automatic Engines, "Canton" Mining Fire and Boiler Feed Pumps, "Cameron" Steam Pumps, "Dodge" Wood Split Pulleys, "Bardmore's" Leather Belting, MacGregor, Gourlay & Co.'s Wood Working Machinery, Stratford Mill Building Co.'s system of complete Flour Mills.  
 LONDON Motors, Dynamos and Elevators.  
 PACKARD'S LAMPS, Transformers and Supplies.

# Hotel Leland

The Palace Family  
 and Commercial Hotel

W. D. DOUGLAS  
 MANAGER

City Hall Square, Winnipeg

RATES:  
 \$2.00 to \$4.00  
 PER DAY

SECOND TO NOTHING  
 IN CANADA

## SENEGA ROOT

FRANK LIGHTCAP

Dealer in  
 HIDES, PELTS, WOOL, ETC.  
 Exporter of Raw Furs.

Highest market prices paid for consignments and returns made promptly.  
 Write for circulars containing Market Reports and latest prices.

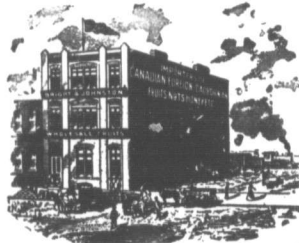
179-174 KING ST., WINNIPEG.  
 P. O. Box 484.

## THE W. E. SANFORD MF'G CO., LTD.

HAMILTON, ONT.

Wholesale  
 Clothing Manufacturers

Offices and sample rooms in the Sanford block, Winnipeg, corner of Princess and Bannatyne streets, where a complete set of samples can always be seen.  
 Western representatives—H. Kite, W. Dunlop, Geo. Shaw, A. McAllister.



BRIGHT & JOHNSTON, 137 HANNATYNE ST WINNIPEG 2

### See Our Price List for Preserving Fruit

Fresstone Peaches, Washington Plums, lowest price this season.

Ontario barrel Apples now arriving.

JOHN W. PECK & CO.  
 MONTREAL WINNIPEG VANCOUVER

Manufacturers of

Clothing  
 Furs  
 Shirts

Dealers to  
 Men's Furnishings,  
 Hats, Caps

### Wholesale Fancy Goods

Toys, China, Smallwares, Perfumes, Toilet Soap, and Musical Instruments

All lines shown by our Representatives, now in stock.

Letter orders receive prompt attention

### J. L. MEIKLE & Co.

Port Arthur, Canada

## Excelsior Cement

Makes the strongest and most desirable walls and floors for buildings. Full descriptions.

Manitoba No. 1 Hard Wall Plaster—Up-to-date Plaster for finishing walls. Made in Manitoba by

THE MANITOBA UNION MINING CO. LTD.  
 Office—214 Grain Exchange, Winnipeg

## SENEGA ROOT

We are paying  
**FORTY SEVEN CENTS PER POUND (47c)**

Ship it in to us. Freight to St. Paul is only one and one-quarter cents. WE ARE HEADQUARTERS FOR SENEGA.

D. BERGMAN & CO., St. Paul, Minn.



ALL KINDS OF FRESH AND SALT FISH, SALT COD, SALT HERRING, RED HERRING, DIGBY CHICKS, MACKEREL, IN KIPS, ETC.

Just in, consignment of Holland Herring in kits.

## W. J. GUEST

FISH AND GAME MERCHANT.  
 601 Main St., Winnipeg



THE UNDERWOOD  
**TYPewriter EMPORIUM**

Send for beautiful fully illustrated Catalogue.  
 DEALERS IN HIGH GRADE WRITING MACHINES  
**430! Main St., Winnipeg**  
 Sole Agents the Underwood Typewriter.

**FINANCIAL**

**WINNIPEG BANK CLEARINGS**

Returns for the Winnipeg Clearing House for the week ending Thursday, show as follows:

Week ending Oct. 3, 1901	\$3,167,704
Corresponding week, 1900	2,672,759
Corresponding week, 1899	2,778,772
Oct. 3-14, 1901	7,294,147
Oct. 14-24, 1901	8,281,158

The monthly totals are as follows:

	1901	1899	1890
Jan.	\$ 9,823,458	9,947,478	7,688,602
Feb.	7,138,276	7,792,646	6,299,471
Mar.	7,800,000	8,173,923	6,736,121
Apr.	7,651,291	7,991,519	6,916,481
May	8,081,667	9,762,270	7,472,865
Jun.	8,347,588	9,271,984	8,169,505
Jul.	9,211,146	9,375,040	7,965,291
Aug.	10,044,353	7,220,147	8,281,158
Sep.	9,183,477	12,080,619	8,453,219
Oct.	11,018,882	11,425,219	8,281,158
Nov.	10,869,225	12,966,935	
Dec.			
<b>Totals</b>	<b>\$106,66,792</b>	<b>\$107,786,814</b>	

**FINANCIAL NOTES.**

Dominion Government Savings bank returns at Winnipeg for the month of September show that deposits exceeded withdrawals by over \$7,000. The statement is as follows: Transactions month ending Sept. 30: Deposits, \$25,045; withdrawals, \$17,721.56. Deposits exceed withdrawals by \$7,323.01.

**INSURANCE**

**WINNIPEG'S FIRE INSURANCE**

The city of Winnipeg has been having some difficulty this week over the question of fire insurance upon private property and it looks as if the bulk of this business would be taken away from the companies represented on the local board of underwriters. It will be remembered that a year ago there was some trouble between the city and the local companies which was patched up at the time by an arrangement which expired at the end of last month. The points in dispute now seem to be these: The companies are in the habit of insuring dwelling houses and domestic property for periods of three years at a time, taking two years' premiums in payment for a three year policy. This is a universal plan and is regarded as a good one for that class of insurance. They do not, however, apply it to business property and especially manufacturing or power plants. The city authorities want the insurance on buildings and work plants placed on this domestic insurance basis, hence the present difficulty. The aldermen claim that they are after the cheapest insurance they can get, while the underwriters state that they would be acting unfairly towards their other policy holders here if they gave the city special privileges. They offered as a compromise to put the fire halls and city hall on a three year basis and the works plants and other property on a commercial basis providing that the whole were insured up to 75 per cent of their value. This proposition has not been favorably received by the city and it is now announced that the bulk of the insurance will be placed with the three non-board companies which are doing business in the city. The other third will be given to the board companies which number eighteen.

**THE CONTINENTAL LIFE.**

George H. Woods, general manager of the Continental Life Insurance Company, is in Winnipeg this week assisting in organizing and extending the interests of the company here. Mr. Woods will remain in the West for four or five weeks, and it is the intention to organize a local board of the company here. The Continental Life is the youngest of the Canadian life companies. It commenced business in December, 1899, and already over \$2,000,000 of insurance in force. This is certainly quite a remarkable showing. Hon. John Dryden is president of the company. The head office is at Toronto. The company opened an office in Winnipeg a short time ago, with Dr. E. A. Blakely in charge as provincial manager.

**Insurance Notes.**

The agents of the Mutual Life Assurance Company of Canada held their annual general meeting in the office

of the company on the 3rd and 4th of September.

Henry Briggs, manager at Winnipeg of the Metropolitan Life Insurance Company, has returned from a trip to Montreal. This company opened a branch office in the McIntyre block, Winnipeg, a short time ago and intend opening other offices at the leading points in Manitoba and the Northwest Territories, as well as in Vancouver and Victoria. The Metropolitan has been writing business in the United States for thirty years and in Canada but this is their first appearance in Western Canada. They are some policies which differ materially from those offered by most of the other companies and which have been very favorably received in the east and south. About two weeks ago this company bought sixteen million dollars worth of insurance of the Pacific Mutual Life Insurance Company, of San Francisco.

**Railway and Traffic Matters.**

Superintendent Hanna, of the Canadian Northern, stated on Thursday that the track of the southeastern branch of that road is now within six miles of Fort Francis.

Carsloads of freight were transferred at Hartney from the Canadian Pacific Railway to the Canadian Northern railway and the first time on Tuesday, Sept. 24.

J. Armstrong, locating engineer for McKenzie and Mann, has left Edmonton on an exploratory trip through the country between Edmonton and Prince Albert.

A survey party is now at work in ranges eight and nine west of the second principal meridian locating the route of the new C. P. R. branch running northwest from Mooseman, Assiniboia.

A contract has been let for the construction of a new passenger car to face for the Canadian Northern Railway company. Mayor Senecal, of St. Boniface, has the contract. It is understood that the figure is about \$5,000.

A change in the C. P. R.'s train service takes effect on the 15th of October. Thereafter the east train will leave Winnipeg at 4 p. m. daily. In addition to the daily train, east the companies are arranging a tri-weekly social train to Toronto for the accommodation of the returning harvesters. This train will commence on Tuesday, the 15th of October, and run every Tuesday, Thursday and Saturday, leaving Winnipeg at 6 p. m.

The Canadian Pacific Railway Company in order to meet the increasing requirements of the trans-Pacific trade, has decided to run the steamship Tartar and Albatross on regular schedule between Vancouver and Hong Kong. The steamship Albatross will leave Vancouver, October 13, January 15, 1902, and April 4. The Tartar left on her first scheduled trip September 29, and will sail again December 13 and March 10. Rates by these boats will be the same as by the Empress, except that there is no intermediate accommodation on the Tartar. When sufficient business of a certain kind is done by the steamships will call also at Yokohama, Kobe, Nagasaki and Shanghai.

Neil Keith, contractor in charge of the Canadian Northern railway construction at the Northwest end of the line, is in the city and states that the work is being pushed as fast as possible. It is the intention of the Canadian Northern to do as much grading as possible this season. There has been a scarcity of labor, otherwise greater progress would have been made. Every effort is being made to get the line into Prince Albert at the earliest possible moment. Contractors on the construction have remained with him faithfully, and as they are making good wages were not induced to leave for the harvest fields. Doukhobors, Galicians and other settlers in the country are beginning to seek employment on the new line now that they have finished harvesting.

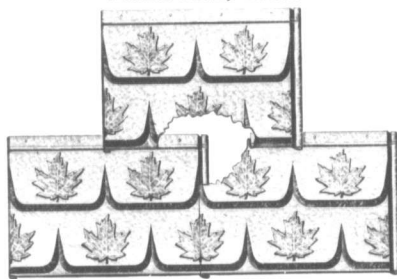
Speaking of locomotives and good wearing qualities, what a lesson young men can learn from the life of Prince Hilkoff of Russia. The son of a princely house, with six centuries of records and honors behind him, a page at court while a boy, at 16 an officer of the Imperial guard, he became impressed with the deplorable

transportation facilities of his country. He left luxury and wealth, came to America and worked as a mechanic in Philadelphia under the name of Magill at a dollar a day. By years of hard manual toil he acquired practical knowledge of railroading. He pursued railroading in South America also. After supporting himself and enduring great hardships he returned to Russia, and going up the ladder

step by step, he now shines as minister of ways and communications of the Russian empire. What an amount of resolution, self-denial and nobility of character must have been required during these long years of preparation. It reminds one of that other page of Russian history—Peter the Great working as a mechanic in English shipyards that he might learn the art for his country's sake.

**METAL SHINGLE AND SIDING CO. Ltd.**

PRESTON, ONT.



**SAFE LOCK SHINGLES.** This cut shows the locking device on all four sides.

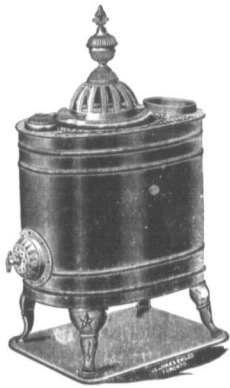
MANUFACTURERS OF

**SAFE LOCK SHINGLES METALLIC CEILINGS METAL SIDING, &c.**

For prices and full particulars apply to

**W. G. McMAHON, 246 McDermott St., Winnipeg**

**McClary's Famous "Air-Tights"**



Have many imitators—none equal. Our lines comprise everything from the cheapest to the finest finish possible to produce. Have Anti-rust coated polished Sheet Steel Body, Heavy Sheet Steel Lining, and Cast Iron Pipe Collar. Screw closing Damper shuts stove so tight that it is impossible for air to pass through unless desired.

New inner linings can be easily put in by removing top.

Screw Damper always keeps fire under perfect control. These are the only actual "AIR TIGHTS" made in Canada.

Dealers please write us for particulars, and we will put you in the way of making some money.

**THE McCLARY MANUF'NG CO.**

183-185-187 Bannatyne Ave. E., Winnipeg

London Toronto Montreal Vancouver St. John, N.B.

**THE HIGHEST STANDARD OF EXCELLENCE**

IN



**3**

**Trade Winners**

**3**

**Trade Winners**



**3**

**Trade Winners**



They delight and satisfy consumers For sale by all Winnipeg Wholesale Grocers.

**E. NICHOLSON**

**WHOLESALE AGENT**  
115 Bannatyne St. East, Winnipeg

**THE IMPERIAL**

**WHOLESALE FRUIT AND PRODUCE CO'Y**

We handle all kinds of green fruits and are prepared to fill your orders for same promptly.

We also buy or handle on commission everything in the way of country produce at highest cash prices and lowest rates of commission.

Settlements made promptly.

330 Elgin Avenue, Winnipeg.

If the system needs bracing, and the palate desires a delicious "liquid food," then test the contents of the "bottle" which is filled with that brilliant beverage known as

**THE REFINED ALE**

"Which sparkles like champagne," and is sold by all wine and liquor merchants and at all restaurants.

**E. L. DREWRY** Manufacturer and Importer, Winnipeg



**Somerville Steam Marble and Granite Works**

SOMERVILLE & CO., PROP.  
BRANDON, MAN.

Estimates given on every description of Monument, Headstone or Fence.

This monument, 27 feet 8 inches in height, manufactured of Manitoba granite, was erected by us in Brandon cemetery during 1896.

**CANADA JUTE CO. LTD., MONTREAL**

WHEAT

BRAN

SHORT

POTATO



FLOUR

JUTE

AND

COTTON

PRINTING A SPECIALTY

**HESSIANS TWINES**

Complete Stock Carried in Winnipeg Prompt Shipment

**E. NICHOLSON**, Agent, 115 Bannatyne St. E., Winnipeg

**W. R. JOHNSTON & CO.**

(Late Livingston, Johnston & Co.)

Wholesale Manufacturers

READY MADE **Clothing**

Corner Bay and Front Streets

**TORONTO**

Western Representatives: A. W. LASHER, W. W. ARMSTRONG.

**WM. FERGUSON**

WHOLESALE

**Wines, Liquors and Cigars**

8th STREET, BRANDON

**SADLER & HAWORTH**

Formerly Robin, Sailer & Haworth

MANUFACTURERS OF

**LEATHER BELTING**

MONTREAL AND TORONTO

JOHN A. CARRUTHERS, Selling Agent, 120 King street, Winnipeg, Man.



The Low Price of Saltpetre.

The steadily declining prices of crude saltpetre, while the stocks have decreased at a far more rapid rate, has attracted considerable attention, says the Oil, Paint and Drug Reporter of New York, and those more familiar with the causes of the present market and stock conditions have marvelled thereat. Ordinarily rapid declines among saltpetres are certain to be followed by higher prices, and the reverse being the case with saltpetre, an explanation is to be expected.

Until the introduction of smokeless powder the principal cause of the decline was the manufacture of black powder, and, especially during the progress of war, saltpetre was being consumed, and as this use has now practically ceased the consumption has fallen off in a corresponding degree. The principal use now is by packers. During many years it was the policy of the government to make purchases of saltpetre in excess of annual requirements, the plan being to accumulate a supply which could be drawn upon in the event of foreign wars or other complications which might affect the supply of saltpetre in this country. In this way immense supplies were accumulated at the various mines and government storehouses. When smokeless powder was adopted for use by the military and naval departments, the government stores were gradually emptied of no further use, and were sold, manufacturers of fertilizers being the principal purchasers. The accumulation is not yet exhausted and some of it may still come on the market if the market favor a rise in saltpetre. In the meantime its use in the manufacture of powder having practically ceased, and the government having adopted reverted saltpetre, the demand for crude has decreased, and the stocks have allowed to decrease.

The quantity decreased, demand and stocks, but the government had so immense quantities at a low price, which were available, naturally had a powerful effect on the market value. Thus, while the stock has decreased from over \$3000 June a year ago to under \$2000 last June, the price has steadily risen and is now the lowest on record, being 14 1/2 cents per 100 lbs. In California claim there is no margin of profit left. The conditions in the production of saltpetre in the governments also having adopted the use of smokeless powder, and the discontinuation of saltpetre there, now but a small part of what it was a few years ago. It will be inferred from these facts that there is no prospect of improvement, and that the consumption will remain about the same. There is no likelihood of much improvement in prices, as the production is a natural outflow from the ground and more or less will be gathered and sent to the market, even though prices recede low.

London Wool Sales.

London, Oct. 1.—The offerings at the wool auction sales to-day amounted to 14,000 bales, comprising medium wools. Fine grades were in good demand, but medium and coarse wools remained in great favor. A slight decline in prices brought about free buying in the lower grades of crossbred and pure merino wools and with a steady demand, several parcels going to Americans. American wools were in smaller prices in buyers' favor. Following are the sales in detail:

Wool 8 South West 3,700 bales, secured, 5 1/2 to 5 1/2; greasy, 3 1/2 to 3 1/2. Queensland—200 bales, secured, 1 1/2 to 1 1/2; greasy, 1 1/2. Victoria—400 bales, secured, 8 1/2 to 8 1/2; greasy, 5 1/2 to 5 1/2. South Australia—1,000 bales, secured, 7 1/2 to 7 1/2; greasy, 5 1/2 to 5 1/2. West Australia—100 bales, secured, 5 1/2 to 5 1/2; greasy, 3 1/2 to 3 1/2. Zealand—500 bales, secured, 5 1/2 to 5 1/2; greasy, 3 1/2 to 3 1/2. Cape of Good Hope and Natal—100 bales, secured, 5 1/2 to 5 1/2; greasy, 3 1/2 to 3 1/2. Punta Arenas—2,500 bales, secured, greasy, 2 1/2 to 2 1/2.

T. B. Deveney went to represent the W. H. B. Co., wholesale goods, Toronto and Montreal, has returned from a visit to eastern headquarters and will bring a sample from the Ashdown block this week.

Cattle Shipping Company.

A number of western cattle shippers met in Winnipeg on Friday evening to formulate a complaint regarding the way in which the cattle are being handled by the C. P. R. this year. They state that delays in transit have caused much loss and suffering to the eastern and old country markets in an unprofitable condition.

Winnipeg Hardware and Metal Prices.

ANVILS.—Per pound, 100 lbs.; anvil and vice combined, each, \$4.50 to \$5.00. BELTING.—Foot sole, Vaughan's, each, \$2.50 to \$3.00. AXES.—Beach, 30 and 10 per cent; chop iron axes, per dozen, \$14.00; double bit, per dozen, \$12.00. BARS.—Crow, \$5.50 per 1000. BELTING.—20x22, \$4.50, 20, \$4.15, 28, \$5.40, 30, \$5.85, 32, \$6.30, 34, \$7.25, 36, \$8.10, 38, 40, \$9.00, 42, \$9.85, 44, \$10.70, 46, \$11.55, 48, \$12.40, 50, \$13.25, 52, \$14.10, 54, \$14.95, 56, \$15.80, 58, \$16.65, 60, \$17.50, 62, \$18.35, 64, \$19.20, 66, \$20.05, 68, \$20.90, 70, \$21.75, 72, \$22.60, 74, \$23.45, 76, \$24.30, 78, \$25.15, 80, \$26.00, 82, \$26.85, 84, \$27.70, 86, \$28.55, 88, \$29.40, 90, \$30.25, 92, \$31.10, 94, \$31.95, 96, \$32.80, 98, \$33.65, 100, \$34.50.

BITS.—AUGER—extra, 50 per cent off new list. JENNINGS Excelsior, 45 per cent. BOLTS.—Carriage, 35 and 50 per cent; machine, 25 and 30 per cent; 1/2 and 5/8 per cent; sash, 30 per cent; stove, 30 per cent. BELTING.—Agricultural, 45 per cent. BUILDING PAPER.—Anchor, plain, 50; cyano and Jubilee, plain, 60; Anchor, cyano and Jubilee, 70; cyano, tarred, 80; Jubilee, tarred, 60. BITS.—Cast, loose pin, 60 per cent; cut, 45 per cent; wrought steel, narrow, 50 per cent; loose pin, 60 per cent.

CARRIAGES.—Rim fire, American discount 13 1/2 per cent; Dominion 50 and 55 per cent; 45 per cent; wrought steel, 50 per cent; Dominion discount 20 per cent; 45 per cent; 45 per cent; 45 per cent; 10 per cent advance on list; Dominion 15 per cent. CEMENTS.—Portland, barrel, \$4.25 to \$4.50. CHAIN.—Cut, proved 3/4, \$4.50 to \$4.75; 1/2, \$3.50 to \$3.75; 3/4, \$4.00 to \$4.25; 1/4, \$2.50 to \$2.75; 1/2, \$3.00 to \$3.25; 3/4, \$3.50 to \$3.75; 1, \$4.00 to \$4.25; 1 1/4, \$4.50 to \$4.75; 1 1/2, \$5.00 to \$5.25; 1 3/4, \$5.50 to \$5.75; 2, \$6.00 to \$6.25; 2 1/4, \$6.50 to \$6.75; 2 1/2, \$7.00 to \$7.25; 2 3/4, \$7.50 to \$7.75; 3, \$8.00 to \$8.25; 3 1/4, \$8.50 to \$8.75; 3 1/2, \$9.00 to \$9.25; 3 3/4, \$9.50 to \$9.75; 4, \$10.00 to \$10.25; 4 1/4, \$10.50 to \$10.75; 4 1/2, \$11.00 to \$11.25; 4 3/4, \$11.50 to \$11.75; 5, \$12.00 to \$12.25; 5 1/4, \$12.50 to \$12.75; 5 1/2, \$13.00 to \$13.25; 5 3/4, \$13.50 to \$13.75; 6, \$14.00 to \$14.25; 6 1/4, \$14.50 to \$14.75; 6 1/2, \$15.00 to \$15.25; 6 3/4, \$15.50 to \$15.75; 7, \$16.00 to \$16.25; 7 1/4, \$16.50 to \$16.75; 7 1/2, \$17.00 to \$17.25; 7 3/4, \$17.50 to \$17.75; 8, \$18.00 to \$18.25; 8 1/4, \$18.50 to \$18.75; 8 1/2, \$19.00 to \$19.25; 8 3/4, \$19.50 to \$19.75; 9, \$20.00 to \$20.25; 9 1/4, \$20.50 to \$20.75; 9 1/2, \$21.00 to \$21.25; 9 3/4, \$21.50 to \$21.75; 10, \$22.00 to \$22.25; 10 1/4, \$22.50 to \$22.75; 10 1/2, \$23.00 to \$23.25; 10 3/4, \$23.50 to \$23.75; 11, \$24.00 to \$24.25; 11 1/4, \$24.50 to \$24.75; 11 1/2, \$25.00 to \$25.25; 11 3/4, \$25.50 to \$25.75; 12, \$26.00 to \$26.25; 12 1/4, \$26.50 to \$26.75; 12 1/2, \$27.00 to \$27.25; 12 3/4, \$27.50 to \$27.75; 13, \$28.00 to \$28.25; 13 1/4, \$28.50 to \$28.75; 13 1/2, \$29.00 to \$29.25; 13 3/4, \$29.50 to \$29.75; 14, \$30.00 to \$30.25; 14 1/4, \$30.50 to \$30.75; 14 1/2, \$31.00 to \$31.25; 14 3/4, \$31.50 to \$31.75; 15, \$32.00 to \$32.25; 15 1/4, \$32.50 to \$32.75; 15 1/2, \$33.00 to \$33.25; 15 3/4, \$33.50 to \$33.75; 16, \$34.00 to \$34.25; 16 1/4, \$34.50 to \$34.75; 16 1/2, \$35.00 to \$35.25; 16 3/4, \$35.50 to \$35.75; 17, \$36.00 to \$36.25; 17 1/4, \$36.50 to \$36.75; 17 1/2, \$37.00 to \$37.25; 17 3/4, \$37.50 to \$37.75; 18, \$38.00 to \$38.25; 18 1/4, \$38.50 to \$38.75; 18 1/2, \$39.00 to \$39.25; 18 3/4, \$39.50 to \$39.75; 19, \$40.00 to \$40.25; 19 1/4, \$40.50 to \$40.75; 19 1/2, \$41.00 to \$41.25; 19 3/4, \$41.50 to \$41.75; 20, \$42.00 to \$42.25; 20 1/4, \$42.50 to \$42.75; 20 1/2, \$43.00 to \$43.25; 20 3/4, \$43.50 to \$43.75; 21, \$44.00 to \$44.25; 21 1/4, \$44.50 to \$44.75; 21 1/2, \$45.00 to \$45.25; 21 3/4, \$45.50 to \$45.75; 22, \$46.00 to \$46.25; 22 1/4, \$46.50 to \$46.75; 22 1/2, \$47.00 to \$47.25; 22 3/4, \$47.50 to \$47.75; 23, \$48.00 to \$48.25; 23 1/4, \$48.50 to \$48.75; 23 1/2, \$49.00 to \$49.25; 23 3/4, \$49.50 to \$49.75; 24, \$50.00 to \$50.25; 24 1/4, \$50.50 to \$50.75; 24 1/2, \$51.00 to \$51.25; 24 3/4, \$51.50 to \$51.75; 25, \$52.00 to \$52.25; 25 1/4, \$52.50 to \$52.75; 25 1/2, \$53.00 to \$53.25; 25 3/4, \$53.50 to \$53.75; 26, \$54.00 to \$54.25; 26 1/4, \$54.50 to \$54.75; 26 1/2, \$55.00 to \$55.25; 26 3/4, \$55.50 to \$55.75; 27, \$56.00 to \$56.25; 27 1/4, \$56.50 to \$56.75; 27 1/2, \$57.00 to \$57.25; 27 3/4, \$57.50 to \$57.75; 28, \$58.00 to \$58.25; 28 1/4, \$58.50 to \$58.75; 28 1/2, \$59.00 to \$59.25; 28 3/4, \$59.50 to \$59.75; 29, \$60.00 to \$60.25; 29 1/4, \$60.50 to \$60.75; 29 1/2, \$61.00 to \$61.25; 29 3/4, \$61.50 to \$61.75; 30, \$62.00 to \$62.25; 30 1/4, \$62.50 to \$62.75; 30 1/2, \$63.00 to \$63.25; 30 3/4, \$63.50 to \$63.75; 31, \$64.00 to \$64.25; 31 1/4, \$64.50 to \$64.75; 31 1/2, \$65.00 to \$65.25; 31 3/4, \$65.50 to \$65.75; 32, \$66.00 to \$66.25; 32 1/4, \$66.50 to \$66.75; 32 1/2, \$67.00 to \$67.25; 32 3/4, \$67.50 to \$67.75; 33, \$68.00 to \$68.25; 33 1/4, \$68.50 to \$68.75; 33 1/2, \$69.00 to \$69.25; 33 3/4, \$69.50 to \$69.75; 34, \$70.00 to \$70.25; 34 1/4, \$70.50 to \$70.75; 34 1/2, \$71.00 to \$71.25; 34 3/4, \$71.50 to \$71.75; 35, \$72.00 to \$72.25; 35 1/4, \$72.50 to \$72.75; 35 1/2, \$73.00 to \$73.25; 35 3/4, \$73.50 to \$73.75; 36, \$74.00 to \$74.25; 36 1/4, \$74.50 to \$74.75; 36 1/2, \$75.00 to \$75.25; 36 3/4, \$75.50 to \$75.75; 37, \$76.00 to \$76.25; 37 1/4, \$76.50 to \$76.75; 37 1/2, \$77.00 to \$77.25; 37 3/4, \$77.50 to \$77.75; 38, \$78.00 to \$78.25; 38 1/4, \$78.50 to \$78.75; 38 1/2, \$79.00 to \$79.25; 38 3/4, \$79.50 to \$79.75; 39, \$80.00 to \$80.25; 39 1/4, \$80.50 to \$80.75; 39 1/2, \$81.00 to \$81.25; 39 3/4, \$81.50 to \$81.75; 40, \$82.00 to \$82.25; 40 1/4, \$82.50 to \$82.75; 40 1/2, \$83.00 to \$83.25; 40 3/4, \$83.50 to \$83.75; 41, \$84.00 to \$84.25; 41 1/4, \$84.50 to \$84.75; 41 1/2, \$85.00 to \$85.25; 41 3/4, \$85.50 to \$85.75; 42, \$86.00 to \$86.25; 42 1/4, \$86.50 to \$86.75; 42 1/2, \$87.00 to \$87.25; 42 3/4, \$87.50 to \$87.75; 43, \$88.00 to \$88.25; 43 1/4, \$88.50 to \$88.75; 43 1/2, \$89.00 to \$89.25; 43 3/4, \$89.50 to \$89.75; 44, \$90.00 to \$90.25; 44 1/4, \$90.50 to \$90.75; 44 1/2, \$91.00 to \$91.25; 44 3/4, \$91.50 to \$91.75; 45, \$92.00 to \$92.25; 45 1/4, \$92.50 to \$92.75; 45 1/2, \$93.00 to \$93.25; 45 3/4, \$93.50 to \$93.75; 46, \$94.00 to \$94.25; 46 1/4, \$94.50 to \$94.75; 46 1/2, \$95.00 to \$95.25; 46 3/4, \$95.50 to \$95.75; 47, \$96.00 to \$96.25; 47 1/4, \$96.50 to \$96.75; 47 1/2, \$97.00 to \$97.25; 47 3/4, \$97.50 to \$97.75; 48, \$98.00 to \$98.25; 48 1/4, \$98.50 to \$98.75; 48 1/2, \$99.00 to \$99.25; 48 3/4, \$99.50 to \$99.75; 49, \$100.00 to \$100.25; 49 1/4, \$100.50 to \$100.75; 49 1/2, \$101.00 to \$101.25; 49 3/4, \$101.50 to \$101.75; 50, \$102.00 to \$102.25; 50 1/4, \$102.50 to \$102.75; 50 1/2, \$103.00 to \$103.25; 50 3/4, \$103.50 to \$103.75; 51, \$104.00 to \$104.25; 51 1/4, \$104.50 to \$104.75; 51 1/2, \$105.00 to \$105.25; 51 3/4, \$105.50 to \$105.75; 52, \$106.00 to \$106.25; 52 1/4, \$106.50 to \$106.75; 52 1/2, \$107.00 to \$107.25; 52 3/4, \$107.50 to \$107.75; 53, \$108.00 to \$108.25; 53 1/4, \$108.50 to \$108.75; 53 1/2, \$109.00 to \$109.25; 53 3/4, \$109.50 to \$109.75; 54, \$110.00 to \$110.25; 54 1/4, \$110.50 to \$110.75; 54 1/2, \$111.00 to \$111.25; 54 3/4, \$111.50 to \$111.75; 55, \$112.00 to \$112.25; 55 1/4, \$112.50 to \$112.75; 55 1/2, \$113.00 to \$113.25; 55 3/4, \$113.50 to \$113.75; 56, \$114.00 to \$114.25; 56 1/4, \$114.50 to \$114.75; 56 1/2, \$115.00 to \$115.25; 56 3/4, \$115.50 to \$115.75; 57, \$116.00 to \$116.25; 57 1/4, \$116.50 to \$116.75; 57 1/2, \$117.00 to \$117.25; 57 3/4, \$117.50 to \$117.75; 58, \$118.00 to \$118.25; 58 1/4, \$118.50 to \$118.75; 58 1/2, \$119.00 to \$119.25; 58 3/4, \$119.50 to \$119.75; 59, \$120.00 to \$120.25; 59 1/4, \$120.50 to \$120.75; 59 1/2, \$121.00 to \$121.25; 59 3/4, \$121.50 to \$121.75; 60, \$122.00 to \$122.25; 60 1/4, \$122.50 to \$122.75; 60 1/2, \$123.00 to \$123.25; 60 3/4, \$123.50 to \$123.75; 61, \$124.00 to \$124.25; 61 1/4, \$124.50 to \$124.75; 61 1/2, \$125.00 to \$125.25; 61 3/4, \$125.50 to \$125.75; 62, \$126.00 to \$126.25; 62 1/4, \$126.50 to \$126.75; 62 1/2, \$127.00 to \$127.25; 62 3/4, \$127.50 to \$127.75; 63, \$128.00 to \$128.25; 63 1/4, \$128.50 to \$128.75; 63 1/2, \$129.00 to \$129.25; 63 3/4, \$129.50 to \$129.75; 64, \$130.00 to \$130.25; 64 1/4, \$130.50 to \$130.75; 64 1/2, \$131.00 to \$131.25; 64 3/4, \$131.50 to \$131.75; 65, \$132.00 to \$132.25; 65 1/4, \$132.50 to \$132.75; 65 1/2, \$133.00 to \$133.25; 65 3/4, \$133.50 to \$133.75; 66, \$134.00 to \$134.25; 66 1/4, \$134.50 to \$134.75; 66 1/2, \$135.00 to \$135.25; 66 3/4, \$135.50 to \$135.75; 67, \$136.00 to \$136.25; 67 1/4, \$136.50 to \$136.75; 67 1/2, \$137.00 to \$137.25; 67 3/4, \$137.50 to \$137.75; 68, \$138.00 to \$138.25; 68 1/4, \$138.50 to \$138.75; 68 1/2, \$139.00 to \$139.25; 68 3/4, \$139.50 to \$139.75; 69, \$140.00 to \$140.25; 69 1/4, \$140.50 to \$140.75; 69 1/2, \$141.00 to \$141.25; 69 3/4, \$141.50 to \$141.75; 70, \$142.00 to \$142.25; 70 1/4, \$142.50 to \$142.75; 70 1/2, \$143.00 to \$143.25; 70 3/4, \$143.50 to \$143.75; 71, \$144.00 to \$144.25; 71 1/4, \$144.50 to \$144.75; 71 1/2, \$145.00 to \$145.25; 71 3/4, \$145.50 to \$145.75; 72, \$146.00 to \$146.25; 72 1/4, \$146.50 to \$146.75; 72 1/2, \$147.00 to \$147.25; 72 3/4, \$147.50 to \$147.75; 73, \$148.00 to \$148.25; 73 1/4, \$148.50 to \$148.75; 73 1/2, \$149.00 to \$149.25; 73 3/4, \$149.50 to \$149.75; 74, \$150.00 to \$150.25; 74 1/4, \$150.50 to \$150.75; 74 1/2, \$151.00 to \$151.25; 74 3/4, \$151.50 to \$151.75; 75, \$152.00 to \$152.25; 75 1/4, \$152.50 to \$152.75; 75 1/2, \$153.00 to \$153.25; 75 3/4, \$153.50 to \$153.75; 76, \$154.00 to \$154.25; 76 1/4, \$154.50 to \$154.75; 76 1/2, \$155.00 to \$155.25; 76 3/4, \$155.50 to \$155.75; 77, \$156.00 to \$156.25; 77 1/4, \$156.50 to \$156.75; 77 1/2, \$157.00 to \$157.25; 77 3/4, \$157.50 to \$157.75; 78, \$158.00 to \$158.25; 78 1/4, \$158.50 to \$158.75; 78 1/2, \$159.00 to \$159.25; 78 3/4, \$159.50 to \$159.75; 79, \$160.00 to \$160.25; 79 1/4, \$160.50 to \$160.75; 79 1/2, \$161.00 to \$161.25; 79 3/4, \$161.50 to \$161.75; 80, \$162.00 to \$162.25; 80 1/4, \$162.50 to \$162.75; 80 1/2, \$163.00 to \$163.25; 80 3/4, \$163.50 to \$163.75; 81, \$164.00 to \$164.25; 81 1/4, \$164.50 to \$164.75; 81 1/2, \$165.00 to \$165.25; 81 3/4, \$165.50 to \$165.75; 82, \$166.00 to \$166.25; 82 1/4, \$166.50 to \$166.75; 82 1/2, \$167.00 to \$167.25; 82 3/4, \$167.50 to \$167.75; 83, \$168.00 to \$168.25; 83 1/4, \$168.50 to \$168.75; 83 1/2, \$169.00 to \$169.25; 83 3/4, \$169.50 to \$169.75; 84, \$170.00 to \$170.25; 84 1/4, \$170.50 to \$170.75; 84 1/2, \$171.00 to \$171.25; 84 3/4, \$171.50 to \$171.75; 85, \$172.00 to \$172.25; 85 1/4, \$172.50 to \$172.75; 85 1/2, \$173.00 to \$173.25; 85 3/4, \$173.50 to \$173.75; 86, \$174.00 to \$174.25; 86 1/4, \$174.50 to \$174.75; 86 1/2, \$175.00 to \$175.25; 86 3/4, \$175.50 to \$175.75; 87, \$176.00 to \$176.25; 87 1/4, \$176.50 to \$176.75; 87 1/2, \$177.00 to \$177.25; 87 3/4, \$177.50 to \$177.75; 88, \$178.00 to \$178.25; 88 1/4, \$178.50 to \$178.75; 88 1/2, \$179.00 to \$179.25; 88 3/4, \$179.50 to \$179.75; 89, \$180.00 to \$180.25; 89 1/4, \$180.50 to \$180.75; 89 1/2, \$181.00 to \$181.25; 89 3/4, \$181.50 to \$181.75; 90, \$182.00 to \$182.25; 90 1/4, \$182.50 to \$182.75; 90 1/2, \$183.00 to \$183.25; 90 3/4, \$183.50 to \$183.75; 91, \$184.00 to \$184.25; 91 1/4, \$184.50 to \$184.75; 91 1/2, \$185.00 to \$185.25; 91 3/4, \$185.50 to \$185.75; 92, \$186.00 to \$186.25; 92 1/4, \$186.50 to \$186.75; 92 1/2, \$187.00 to \$187.25; 92 3/4, \$187.50 to \$187.75; 93, \$188.00 to \$188.25; 93 1/4, \$188.50 to \$188.75; 93 1/2, \$189.00 to \$189.25; 93 3/4, \$189.50 to \$189.75; 94, \$190.00 to \$190.25; 94 1/4, \$190.50 to \$190.75; 94 1/2, \$191.00 to \$191.25; 94 3/4, \$191.50 to \$191.75; 95, \$192.00 to \$192.25; 95 1/4, \$192.50 to \$192.75; 95 1/2, \$193.00 to \$193.25; 95 3/4, \$193.50 to \$193.75; 96, \$194.00 to \$194.25; 96 1/4, \$194.50 to \$194.75; 96 1/2, \$195.00 to \$195.25; 96 3/4, \$195.50 to \$195.75; 97, \$196.00 to \$196.25; 97 1/4, \$196.50 to \$196.75; 97 1/2, \$197.00 to \$197.25; 97 3/4, \$197.50 to \$197.75; 98, \$198.00 to \$198.25; 98 1/4, \$198.50 to \$198.75; 98 1/2, \$199.00 to \$199.25; 98 3/4, \$199.50 to \$199.75; 99, \$200.00 to \$200.25; 99 1/4, \$200.50 to \$200.75; 99 1/2, \$201.00 to \$201.25; 99 3/4, \$201.50 to \$201.75; 100, \$202.00 to \$202.25; 100 1/4, \$202.50 to \$202.75; 100 1/2, \$203.00 to \$203.25; 100 3/4, \$203.50 to \$203.75; 101, \$204.00 to \$204.25; 101 1/4, \$204.50 to \$204.75; 101 1/2, \$205.00 to \$205.25; 101 3/4, \$205.50 to \$205.75; 102, \$206.00 to \$206.25; 102 1/4, \$206.50 to \$206.75; 102 1/2, \$207.00 to \$207.25; 102 3/4, \$207.50 to \$207.75; 103, \$208.00 to \$208.25; 103 1/4, \$208.50 to \$208.75; 103 1/2, \$209.00 to \$209.25; 103 3/4, \$209.50 to \$209.75; 104, \$210.00 to \$210.25; 104 1/4, \$210.50 to \$210.75; 104 1/2, \$211.00 to \$211.25; 104 3/4, \$211.50 to \$211.75; 105, \$212.00 to \$212.25; 105 1/4, \$212.50 to \$212.75; 105 1/2, \$213.00 to \$213.25; 105 3/4, \$213.50 to \$213.75; 106, \$214.00 to \$214.25; 106 1/4, \$214.50 to \$214.75; 106 1/2, \$215.00 to \$215.25; 106 3/4, \$215.50 to \$215.75; 107, \$216.00 to \$216.25; 107 1/4, \$216.50 to \$216.75; 107 1/2, \$217.00 to \$217.25; 107 3/4, \$217.50 to \$217.75; 108, \$218.00 to \$218.25; 108 1/4, \$218.50 to \$218.75; 108 1/2, \$219.00 to \$219.25; 108 3/4, \$219.50 to \$219.75; 109, \$220.00 to \$220.25; 109 1/4, \$220.50 to \$220.75; 109 1/2, \$221.00 to \$221.25; 109 3/4, \$221.50 to \$221.75; 110, \$222.00 to \$222.25; 110 1/4, \$222.50 to \$222.75; 110 1/2, \$223.00 to \$223.25; 110 3/4, \$223.50 to \$223.75; 111, \$224.00 to \$224.25; 111 1/4, \$224.50 to \$224.75; 111 1/2, \$225.00 to \$225.25; 1

Crab Apples are done  
for this Season.



This week for

# PEACHES

ORDER NOW. Don't  
get left.

Headquarters for  
Winter Apples

THE **MAGPHERSON FRUIT CO.**  
LIMITED  
491 Main St., Winnipeg

SEND US YOUR ORDERS FOR

## Threshers' Supplies

We carry a full line.

**MARSHALL-WELLS CO.**  
WHOLESALE HARDWARE  
WINNIPEG

## Lime Juice

We have just received a consignment of LIME JUICE of rare quality, which we offer in barrels, or in pint and quart bottles at a figure that will make you money.

We have just what you want. Write for quotations. Order Early.

**The Martin, Bole & Wynne Co.**  
WHOLESALE DRUGGISTS  
P.O. Drawer 146. WINNIPEG

BAR SHEET

## STEEL

PLATES ANGLES, Etc.

Imported Promptly at lowest prices.

Gold Rolled  
Steel  
Shafting



Sanderson's  
Cast  
Steel

In Stock

"Cambria" make.

**A. C. LESLIE & CO., Montreal**

OUR TRAVELLERS are now out with a full range of Spring Samples of

## Boots and Shoes and Rubbers



It will pay you to take a look. We have the best values in Canada. They will also show a full range of Boots and Shoes manufactured by J. A. & M. Cote of St. Hyacinthe. If you require anything in sorting, our stock is most complete and we will be pleased to fill your order promptly.

## THE KILGOUR-RIMER CO. Ltd., Winnipeg

Headquarters for Maple Leaf Rubbers

## HICKS BROS. & Co.

TEA IMPORTERS

And Wholesale Dealers in

Fancy Groceries, Butter, Eggs, Cheese

Packers of Britannia, Beaver and Buffalo Brand of Packaged Teas and Sole Agents for These Lipson's Package Teas for Manitoba, N. W. Territories and British Columbia.

244 Princess St., Winnipeg

## JOHN E. BROWN

FOREIGN AND DOMESTIC

## WOOL

COMMISSION MERCHANT

Consignments Solicited.

HAMILTON, ONTARIO

## A. CARRUTHERS & CO.

Dealers in and Exporters of

Hides, Wool, Sheepskins,  
Tallow, Seneca Root  
and Raw Furs

Liberal advances made on shipments against Bill Lading. Wool, Sacks, Hides, Hays and Eggs furnished on application.

Office and Warehouse: 120-122 King St. WINNIPEG, MAN.

## S. Greenshields, Son & Co.

MONTREAL

Wholesale . . .

DRY GOODS

MEN'S FURNISHINGS  
CARPETS, ETC.

Winnipeg Sample Rooms:

412-414 McIntyre Block

Represented by—R. R. GALLAGHER  
G. M. NEWTON

## HODGSON, SUMNER & CO.

Importers of Domestic, British, French,  
German and American

## Dry Goods Men's Furnishings

SMALL WARES  
AND FANCY  
GOODS

347 and 349 St. Paul Street  
Montreal

Represented in the West by

A. C. McLAUCHLAN, Box 330, Winnipeg

## WHEELLOCK ENGINES

Ideal Engines, Gasoline Engines, Boilers, Pumps, Waterworks, Optimal Machinery, Floor Mill Machinery, Wood working Machinery, Wood Bin Split Pulleys, Iron Pulleys, Shafting, Hangers, Gearing, Precision Clutch Pulleys, Saws and Vauld Bores—made by Goddard McMillan Co., Galt.

## THE MURDOCH CO.

Office and Warehouse  
132 Princess Street, Winnipeg  
Telephone 1262

## Great West Saddlery Co. Limited

WINNIPEG, MANITOBA

The Largest and Most  
Up-to-date Business Capital \$250,000  
in Canada

Our saddles good, made of leather and wood.

Make riders stout with glee.

Smooth and bright; strong but light.

Those made by the "G. W. S. Company."

Our harness best, that stands the test.

However severe it be.

Construction strong; never sags.

Those coming from the "G. W. S. Company."

Our collars you know; they fit just so.

And their quality, you'll agree.

Is no fake, like others make.

For they're made by the "G. W. S. Company."

Our trunks and valises; the very best.

They'll suit you to a tee.

Handsome, neat and can't be beat.

Furnished only by the "G. W. S. Company."

Now dealers shrewd, please be subdued;

And to this factory flee.

Their saddlery sells, you're treated well.

By this wondrous "G. W. S. Company."

Send for our new and beautifully illustrated Catalogue and Price List.—Free.

123 and 124 Market St. East.

WINNIPEG, MAN.

# Snapz in Winter Footwear

We have purchased the entire stock of an Eastern felt factory at a bargain, and have placed these goods on the market here. We can offer warm winter footwear in Men's Women's and Children's Felt Shoes at a great reduction on regular prices while they last. The stock is first quality. A rare opportunity to stock felt goods.

## H. G. MIDDLETON & BRO.

139 ALBERT STREET  
WINNIPEG

Adjoining Leland Hotel.

## Great West Saddlery Co. Ltd.

123 and 124 Market St. East.

WINNIPEG, MAN.

**Manitoba.**

John Norris, grocer, Winnipeg, has assigned to C. H. Newton.

Frazer & Ross, general merchants, Brandon, suffered a slight loss by fire on Wednesday.

Maizer & Carter have purchased the butcher business of Tate & McCann, Grand View, and are now operating.

Another branch post office is to be opened in Winnipeg in the Hudson Bay company's stores.

A. C. Cross, contractor, Winnipeg, has effected a compromise with his creditors at a rate of 75c on the dollar.

T. J. Noble and S. Graham have purchased the implement branch of Saunders & Anger's business at Arman.

The first annual exhibition of the Tohono Agricultural society will be held at Tohono on Thursday next, October 10.

The new Baptist college at Brandon was formally opened this week. The building is a very commodious and convenient one.

The stock of John Norris, grocer, Logan avenue, Winnipeg, has been sold by J. E. Farnham, auctioneer, at 10c on the dollar and the stock shipped to Neopawa.

It is reported that the city council will amend a by-law to the ratemakers at the municipal elections in December to provide for raising money for the lighting facilities of the city.

A by-law will be submitted to the ratemakers in December to provide for the raising of delinquents to erect a fire hall in Fort Rouge and to provide basements for the south and north halls.

F. E. Hewitt, of the Cane Commission Company, Minneapolis, has secured offices in the Grand Forks, Winnipeg, and his firm will commence doing business in Winnipeg on Monday.

They will transport a 65-ton grain commission business.

Magwood's boarding house at Margaret was destroyed by fire on Tuesday night of last week. Very little of the contents were saved. G. Morris, contractor, and so also did Jekill & Thompson, blacksmiths.

The old frame building on the east side of Main street, Nos. 241 and 245, has had a stone foundation put in and other alterations and improvements are being made to the building to meet the requirements of Taylor Bros., wholesale fruit dealers. Taylor Bros. expect a spur track to be run to the rear of the premises from the Canadian Northern yards.

The firm of Jones & Dingman, commission merchants, Winnipeg, has been succeeded by Hilton, Dingman & Co. Mr. Hilton is well known as a commercial traveller, representing Winnipeg houses. Mr. Gibson, the other new member of the firm, was formerly with the Simpson, Gibson Co., Winnipeg. They have their office and sample room in the Sanford block.

The Canada Foultry Co. Limited, Toronto, has opened a branch at Winnipeg, under the management of C. E. Mackenzie, who has been appointed in charge of the business of the Canadian General Electric Co. Ltd., at Winnipeg for the past three years. Arrangements have been secured by this company for the Y. M. C. A. building, where a small stock of electrical supplies will be carried.

Following are the returns of collections made by the inland revenue department at the Winnipeg branch for the month of September. Spirits, \$12,541.85; malt, \$2,095.15; tobacco, \$17,923.75; raw wool, \$77,074.82; \$24,000.00; B. C. Revenue, \$229; other receipts, \$18; total, \$60,135.55. The receipts for the corresponding month last year were \$43,290.24, being the substantial increase of \$17,729.30.

On Wednesday evening W. T. Devlin, late manager of the boat and shore department of the Hudson Bay Company, at Winnipeg, was waited upon by a number of his fellow employees who presented him with a check and a handsome present upon the eve of his departure in business, leaving the service of the company.

Mr. Devlin, who has been at the office presented Mr. Devlin consisted of a handsome and elegant polished case, a desk and bookcase combined.

Mr. Devlin, after fifteen years' experience in the boat and shore department of the Hudson Bay Company, has

now severed his connection with that company and has taken over the business formerly conducted by A. G. Morgan in the McIntyre block.

**Assiniboia.**

J. R. Smith has opened a butcher shop at Indian Head.

W. C. Hamilton, K. C., died at Regina on Tuesday, aged 43.

A factory is being started at Indian Head for the manufacture of fanning mills.

F. T. Eames has bought out the Arcola House, Arcola, and will conduct it as a hotel. He is the proprietor of the Queen's Hotel, Brandon.

The explosion of an acetylene gas generator in the general store of H. H. Benson & Co., at Indian Head, on Monday night, caused considerable damage to the building and stock. The loss is placed at \$2,500.

**Alberta.**

H. Miron will open in the butcher business at Lethbridge about the middle of October.

A new meat market, under the management of W. Huggins, is to be started at Madoc, near H. Here is the owner of the business.

Joe Whitehead has been appointed manager of K. McKenzie's new warehouse at Edmonton in the place of J. W. Kelly, resigned.

J. H. Morris & Co. have purchased the stock of the Leduc Mercantile Co., which was recently offered for sale, and will offer the stock for sale at reduced prices.

J. Lundy has leased the Powell & Jackson butcher store at Inverness and will open in that line of business.

**Saskatchewan.**

Dr. Bain, of Prince Albert, brother of Mr. Justice Bain, of the Manitoba bench, died on Wednesday morning, after a brief illness.

**Northwestern Ontario.**

T. A. Shaw has taken out an application for a license and has opened in business at Keewatin. He is also carrying a job line of dry goods, gent's furnishings, etc.

The town of Hat Point passed a by-law reducing the rate of the Electric Light Company by 25 per cent. The company has entered suit to upset this by-law.

The month of September, just past, was the largest in the history of the customs office at Fort William, receipts for the month amounting to \$27,874. This is an increase of \$6,700 over any previous month.

The promoters of the Kakabeka Falls Power scheme at Port Arthur are endeavoring to arrange for the immediate installation of a plant. Power will be supplied to both Fort William and Port Arthur. If the project goes ahead, a proposition is to be made to the two towns to purchase the plant to ensure the immediate prosecution of the work.

**Winnipeg Prices a Year Ago.**

Following were Winnipeg prices this date last year:

Wheat—No. 1 hard closed at 86c/88c in store Fort William.  
 Flour—Job lots, 90c per sack; Patent, \$2.20; best bakery, \$2.15.  
 Shorts—Job lots, 60c per ton; shorts, \$14.50 per ton, delivered.  
 Oats—Barley on track, 40c/42c, according to quality.  
 Cattle—Cows per bushel for cars on track, 10c-11c.  
 Corn—in car lots, 45c/50c per bushel of 56 lbs.  
 Butter—Dairy, 12c/14c per lb. creamery, 22c per lb. at the factory.  
 Hides—Butcher factor, 95c/10c, laid down here.  
 Eggs—No. 12c/12c for Manitoba fresh, less expressage.  
 Fat—No. 1, 10c per bushel, 40c/45c.  
 Beef—No. 1, 10c per lb.  
 Pork—Lard—No. 1, 10c per lb., dressed, 10c/11c.  
 Turkeys, dressed, 15c.  
 Chickens, 10c/11c.  
 Eggs—No. 1, 25c/30c per pair; Hides—No. 1, 10c per lb.; Wool—No. 1, 10c per lb.; Sheep—No. 1, 10c per lb.; Cattle—No. 1, 10c per lb.; Hogs—No. 1, 10c per lb.

**Statistical Wheat Report.**

**WHEAT IN CANADA.**

Stocks of wheat in Canada at principal points of accumulation are reported as follows:

Montreal	162,000
Toronto	16,000
Calumet, Que.	31,000
Beard River, Ont.	21,000
Kingston	15,000
Total	245,000
Port William, Port Arthur and Quebec	1,175,000
Manitoba elevators	750,000
Total Sept. 21	2,275,000
Total previous week	1,540,000
Total for 1907	3,352,000

**BRADSHIRE'S REPORT OF STOCKS.**

Total stocks in the United States and Canada, east of the Rocky Mountains, as reported by Bradshire's report, are 48,350,000 bushels, as against 44,720,000 bushels for the previous week.

Total stocks in the United States and Canada a year ago were 7,835,000 bushels, according to Bradshire's report.

The stocks of wheat at Pacific coast ports on Sept. 1 were 4,200,000 bushels.

**THE VISIBLE SUPPLY.**

The Chicago visible supply statement of stocks in the United States and Canada, east of the Rocky Mountains, for the week ending Sept. 21, 1907, shows an increase of 2,070,000 bushels for the week ending Sept. 21, 1907, to 22,280,000 bushels, one year ago 11,260,000 bushels, four years ago 21,100,000 bushels, five years ago 20,110,000 bushels.

**STOCKS OF OATS AND CORN.**

The visible supply of oats in the United States and Canada, east of the Rocky Mountains, is 8,522,000 bushels, compared with 11,422,000 bushels for the previous week. The visible supply of corn is 12,480,000 bushels, compared with 17,020,000 bushels a year ago, according to the Chicago statement.

**WORLD'S WHEAT STOCKS.**

Stocks of wheat in America and Europe and about for Europe Sept. 1 in each year for a series of years, were as follows: Bradshire's report:

1900	118,000,000
1901	115,000,000
1902	112,000,000
1903	117,000,000
1904	120,000,000
1905	125,000,000
1906	128,000,000
1907	108,000,000
1908	104,000,000

**CLOUT MOVEMENT.**

The following table gives the receipts of wheat at the four principal United States ports, beginning with the beginning of the crop movement, Aug. 1, 1901, to date, compared with the same period of last year:

This Crop. Last Crop.	
Minneapolis	1,922,275
Minneapolis	1,771,050
Chicago	11,265,332
Chicago	15,498,805
Total	14,489,587
Total	12,537,437

The following table gives the receipts of wheat at the four principal United States winter wheat markets, from the beginning of the crop movement, July 1, 1901, to date, compared with the same period last year:

This Crop. Last Crop.	
Toledo	4,043,720
Detroit	1,212,275
St. Louis	1,250,148
Kansas City	11,741,717
Total	18,247,860
Total	16,240,513

**Grain and Milling Notes.**

Kennedy Bros., of Sifton, Man., are erecting a large grain elevator at that point.

Barnett and Johnston, of Ochre River, Man., have completed the erection of a 20,000 bushel elevator at that point.

Deliveries of grain on Tuesday at Canadian Pacific railway elevator points totalled 302,000 bushels of wheat and 2,000 of oats.

Robt. Muir, of Winnipeg, has again been appointed western representative of the Dominion government in connection with wheat. This board is appointed annually by the Dominion government for the purpose of fixing the Canadian floor standards. It meets at Montreal once a year.

The Grand Trunk railway Company has awarded the contract for the erection of a new elevator at Port Edward, Ontario, to replace one burned last year. The new truck elevator is considerably larger than the one destroyed, having a capacity of 1,500,000 bushels. It will conform to Canadian floor standards. It meets at Montreal once a year.

It is reported that five hundred thousand bushels of Canadian oats have been purchased for export to South Africa. These consignments added to

the purchases amounting to about 700,000 bushels, bought earlier in the month, have assured the Canadian supply of the cereal by 100 million bushels. The filling of orders has stiffened prices quite materially in the east.

For the first time in Nebraska's history her wheat crop will bring more money to the farmers than her corn. An estimate just made by the state bureau of statistics shows that the aggregate value of the wheat crop of 50,000,000 bushels will be \$30,000,000 and that of the corn \$25,000,000. The reason for this is that the drought shortened the corn crop by more than one-half.

Bradshire's London Corn Trade List in its preliminary estimate of the world's wheat crop in 1907 makes Europe's crop only 21,000,000 bushels below 1906, but nearly 30,000,000 bushels below 1898. It is, in fact, much the smallest since 1857. On the other hand, countries outside of Europe are figured as raising 221,000,000 bushels more than last year, and the largest total since 1858. Bradshire holds the opinion that "the superabundance of American outputs this year will be self-sufficient, and that the probable production will be again rather in excess of the world's requirements. Commercial estimates only are used for the American and Russian crops."

During the week ending Saturday last there were 3172 head of cattle shipped from the port of Montreal to old country markets.

WANTED—SEVERAL PERSONS of character and good reputation in each state one in this country required to represent and advertise established wealthy business houses of solid financial standing. Salary \$1800 weekly, with expenses additional, all payable in cash each Wednesday direct from local offices. Horse and carriage furnished, when necessary. References. Enclose self-addressed stamped envelope. Manager, 318 Caxton Building, Chicago.

**WINNIPEG GRAIN AND PRODUCE EXCHANGE**

President WM. MARTIN  
 Vice President, Sec'y Treas.,  
 C. A. YOUNG, CHAS. N. BELL

**KIRKPATRICK & COOKSON**

Consignments of Grain and Manitoba Produce solicited.  
 Established 1860. Manitoba Grain Code used.

**HEAT Ask for Prices Before Selling**

All grades handled on commission. We make quotations on all grades of grain, get best prices and make prompt returns.

**THOMPSON SONS & CO.**

GRAIN COMMISSION MERCHANTS.  
 WINNIPEG.  
 (Licensed and bonded under Man. Grain Act.)



livered here is being quoted for fine cable butter. Hest stock is firm at 11 to 12c per pound commission basis. **EGGS**—The market is firm and unchanged. We quote 8c per pound at factory points for best.

**CHOICES**—Choice canned eggs are higher at 10c per dozen delivered here. Strictly new laid eggs are worth 25c per dozen.

**VEGETABLES**—Potatoes have been selling as low as 20c per bushel for farmers' loads at the city market this week. This is 10c below the price of a week ago. The market is a week firmer to-day and for some lots as high as 40c is still being paid. The weakness noted is caused by United States buyers who have contracted for potatoes at good figures trying to back out of their deals, at least that is the way persons in the trade put it. Potatoes should be good value even at the highest figure quoted in this market, as it is generally believed that there is only about one-half of a crop, making the country all over. We quote: Potatoes, farmers' loads, delivered here, 30 to 40c per bushel, car lots at country points, 25c per bushel, carrots and beets, 35c per bushel, turnips, 25c per bushel; cabbage, 35c per dozen; cauliflower, 40 to 50c per dozen; lettuce and radish, 10c; celery, 20 to 25c; pumpkin, 1c per pound; zucchini, 1c per pound; vegetable marrow, 40c per dozen; okra and squash, 15c per pound; onions, 25c per pound.

**DRESSED MEATS**—Beef is plentiful and 4c lower. Hogs are scarce and at high prices prevailing. We quote: Beef, 5 to 5 1/2c per pound; veal, 7 to 8c; mutton, 10c; lamb, 11 to 12c; pork, 9c.

**HIDES**—Prices are unchanged as follows: No. 1 hides, 6c per pound delivered; horse, No. 2, 5c; No. 3, 4c; kips and calf same price as hides; deskins, 25 to 40c; stunks, 5 to 10c; horse hides, 5c to \$1.00.

**TALLOW**—The local price for tallow is 6c per pound, but buyers for shipment catch say they cannot pay more than 4 1/2c and make any money. **WOOL**—The market is very quiet. The Manitoba wool is about all cleaned up. It is reported that one lot of Terrior wool has been brought here, but price is not named.

**SENeca ROOT**—Gains still interfere with digging, and root is very scarce. The market has taken a phenomenal jump upwards this week and has now reached a point which is about as high as root has ever sold at here. Twin city dealers are offering as high as 47c per pound for Manitoba root delivered there which is 11c above the top price of a week ago. Winnipeg dealers are meeting this price, but as root is scarce there is not much business doing.

**LIVE STOCK.**

**CATTLE**—The export movement is active and cattle are going out freely. Export steers rate steady at 3 1/2c per pound weighed off cars here and export cows at 3 1/4c. Butchers' cattle range from 2 1/2c to 3 1/2c per pound. There is no stocker business doing.

**SHEEP**—Choice mutton sheep are worth 4 1/2c off cars, lambs, 6 1/2c.

**HOGS**—The market is firmer and as high as 6 1/2c and 7c is now being received as quoted by packers for best weights of cars here.

**MILK COWS**—Supply is limited and there is not much demand. We quote \$30 to \$40 per head, according to grade.

**HORSES**—Work horses are fetching all the way from \$125 to \$200 each, according to weight and quality. Demand is good and the market is much firmer than it was some weeks ago. Omnibus horses are supplying the demand.

**The Demand for Rails.**

(Railway Review.)

Orders for about one hundred thousand tons of steel rails have been placed within a few days, and current estimates put the volume of the probable orders in sight for the next five or six weeks at a half-million tons. The other branches of railway supply are similarly active, especially in locomotive and car departments. The prospects now are that the entire iron and steel industry will gradually become increasingly overworked. Requisitions and opening-up requirements clearly point to an exceptional demand for an indefinite period. The collapse of the steel strike was more due to the essential justice of the workmen than to their

unwillingness to remain idle. The very strong probabilities now are that a demand will set in, and continue all along the line, which will crowd all capacity still further ahead. New furnace and mill capacity is lining up, new capacity is projected, but all the requirements are trotting ahead at a speed which, if not alarming as to continuance, is at least surprising. There is as yet no hint of a purpose to put up railway material prices.

**The Labor Market.**

There is again a great scarcity of men throughout the country, and help for breeding work is in great demand, at high wages. A good many of the men who came from the east to help in the harvest have returned, some having become discouraged by the interruptions in the city labor of all kinds is scarce. The railways are calling for more men and men for the winter wood and lumber camps are also being sought for, at higher rates of wages than have prevailed in recent previous years.

**A Handsome Catalogue.**

The Fairchild Co., Limited, Winnipeg, wholesale dealer in farm implements and machinery, have issued a very handsome catalogue, descriptive of the goods they handle. The book has over 100 pages and is printed on very fine paper. There are over 100 illustrations of implements and parts handled by the company, exclusive of carriages as a separate catalogue is devoted to the carriage department. A fine portrait is given of the late Frank A. Fairchild, founder of the company. This is one of the finest implement catalogues ever issued in Canada.

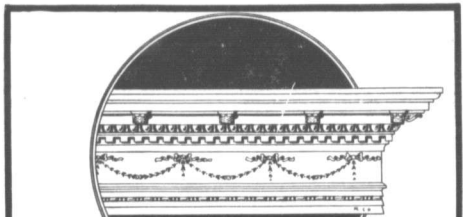
Dr. Hardie, late of Edinburgh, Scotland, has bought out the medical practice of Dr. Burnham, at Morden.

The total number of failures in Canada last week was 25, against 20 the previous week and 14 the same week last year.

The C. P. R. land sales for the month of September were much heavier than usual. The aggregate will be, in the neighborhood of 60,000 acres for \$210,000. In September, 1900, the total sales amounted to 21,807 for \$99,012. The land sold this year exceeds the sales up to the same period of last year by about 40,000 acres. The sales by the Canada & Northwest Land company were also very heavy. This company sold 11,000 acres for the sum of \$92,000. For September, 1900, the sales were 2,400 acres for

the sum of \$12,800. The sales by the C. & N. W. Land Co. for the year are \$300 in excess of those up to Sept. 30, last year.

The post office department gives notice that the summer arrangements for the dispatch of mails to Dawson and other places in the Yukon district are liable to be brought to a close at any moment, and that when this takes place it will be necessary, as in previous winter seasons, to restrict initials to letters and a limited quantity of newspapers, preference being given to single papers addressed to private individuals.



Do you know their advantages!

**Our Metallic Cornices.**

Light in weight, easily erected, durable, handsome in effect, fire-proof, and economical.

For improving an old building, or for any class of new structure, you'll find them invaluable.

In addition to the many artistic designs shown in our Catalogue, we make them to any special architectural design required.

If you'd like an estimate, send us your specifications.

**METALLIC ROOFING CO., Limited,**  
Wholesale Manufacturers, TORONTO, CANADA.

THOS. BLACK, Selling Agent, 131 Bannatyne Ave., Winnipeg

**BOSTON RUBBERS**

Our sorting stock is heavy and all orders will have immediate attention. Our discounts can be had on application. Send for illustrated catalogue. Every pair of BOSTON RUBBERS FULLY GUARANTEED.

**Felt Shoes, Moccasins, Sox**

We can supply all grades of these goods at lowest prices. Prompt shipment always.

**FOR SPRING**

If you inspect our spring samples of Leather Boots and Shoes now on the road, you will no doubt be satisfied that they are as strong a line as is being sold by any house in the trade. Winnipeg shipment. Saves Freight.

**ARTHUR CONGDON**

Princess Street, Winnipeg.



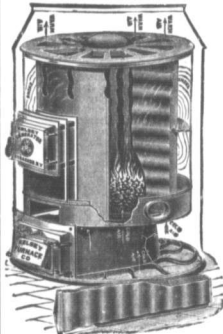






# THE KELSEY WARM AIR GENERATOR

Patented



KELSEYS are endorsed by all the best known authorities on SANITARY warming and ventilating.

KELSEYS are unlike any other warming apparatus, but most closely allied to INDIRECT hot water or steam heating.

KELSEYS overcome the many well-known defects and short comings in all other warming and ventilating devices.

KELSEYS are most simple in construction, practicable, and easily managed.

KELSEYS have now been in use in Canada for five seasons. Users can tell with what results.

KELSEYS do the work with a large volume of mild, warm air, rather than a small quantity of dry, hot, super-heated air.

KELSEYS burn 1/3 less fuel than the ordinary furnace.

KELSEYS are undoubtedly the best that can be procured. Nothing can be better than the best.

KELSEYS were first made in 1880, since which time their sales have increased each and every year and to-day there are about 20,000 in use.

KELSEYS can be made to warm all rooms at all times no matter how the wind blows.

KELSEYS weigh twice as much as a hot air furnace with same size of fire-pot.

KELSEYS do not give you "THAT TIRED FEELING" every time you visit the cellar.

200 KELSEYS in successful operation west of Lake Superior.

IF INTERESTED, write for booklet.

**THE JAMES SMART M'F'G CO. Ltd.**

WINNIPEG, MAN.

SOLE MAKERS FOR CANADA

BROCKVILLE, ONT.

Frederic Nicholls, general manager of the Canadian General Electric Company of Toronto, was in Winnipeg this week arranging for the opening of a new office here. They have taken quarters in the Y. M. C. block and intend placing it in charge of C. E. Mackenzie, western representative of the company.

## Winter Overcoats



We have a large and well assorted stock of FALL and WINTER OVERCOATS, READY MADE CLOTHING, GENTS' FURNISHINGS, and SMALL WARES. When in the city call and see our goods. They will satisfy you. Mail orders given prompt attention.

## EASTERN CLOTHING HOUSE

J. GENSER, Prop.

222 Alexander Ave. Winnipeg

## About Horse Nails



There is one brand of horse shoe nails that you can do all your business with—the old reliable "G" brand. If you keep your stock of this one brand, you will satisfy any farrier you sell to, in the matter of quality, pattern, and finish.

If you want cheap nails the "G" brand is the cheapest to buy, though not the lowest priced. Best quality and lowest price never go together. Low price—low quality. Best price—best quality, is the rule.

Many buyers are tempted to purchase low priced nails, thinking they are saving brand and low priced horse nails. We wish to inform such buyers that twenty-five cents a box less than our price, only reduces the cost of the nails used in a full set of shoes one-third of one cent; and fifty cents a box less, two-thirds of a cent; the difference in price between the "G" and it requires, therefore, seventy-five cents a box below our price to reduce the cost one cent in the nails used in shoeing a horse. We base above on the average size nail, No. 8, and the statement is absolutely correct.

No intelligent farrier who values his reputation for good work, but can afford, and willingly pay a little more for the best nails, when the difference in quality and price, as above stated, are fairly presented to him.

Our works (which are the largest and oldest in Canada) have been employed in making horse nails only, since the year 1865. You have the benefit of this experience in purchasing our "G" brand. You get the best that are made in Canada.

We want your trade and will appreciate your orders through any dealer, or direct, if they cannot supply you.

**CANADA HORSE NAIL CO.**  
MONTREAL

SPECIALLY MADE FOR FAMILY USE.

# OGILVIE'S FLOUR

ALWAYS ASK FOR OGILVIE'S.



Its loaded with pure Havana Tobacco, convertible into solid enjoyment. Thousands now smoke this famous Cigar. Do you?

**WESTERN CIGAR FACTORY, Winnipeg, Man.**









### Do Not Make the Store a Stable.

Among a certain class of merchants, usually very small ones, who are inclined to remain always in the store, jumping from one customer to another, there is a tendency to do odd jobs in the store itself or in the back room, says the Commercial Bulletin, of Minneapolis. For instance, when it comes time to oil up the harness or clean them some merchants bring them into the store, or do them up at the quietest period of their business day, or in the evening when they are few customers, even during the peak of business, or if they have a seat in their wagon which needs fixing they have the clerk bring that into the store, and the clerk hammers and pounds away while several customers are in the store. The doing of these, in the main, is a matter of business, and is commended as strongly as possible.

Not only does the litter which always accumulates give the store the appearance of a carpenter shop, instead of that of a place of business, but the continuing work going on in the back room is very severe on the nerves of lady customers, and if the latter do not object to being in the store, it is assured that they will have a very poor opinion of the merchant that permits such a nuisance with litter in their presence.

The store should always be kept as clean as possible, and the litter which there is one customer or a dozen in it. The litter on the floor should not be permitted to accumulate, or it gives a very untidy appearance to the place of business. The merchant who is honestly interested in his business, as to these things, and while the fact may not be brought personally to his attention, it will be a matter of comment in his favor among customers when they are quietly talking among themselves, and will be a good advertisement for him if he keeps his place of business as neat and clean, and does nothing to be done in the outside of the selling, packing and filling of goods.

I recently visited a grocery store in this city where one of the clerks was selling harness in the back part of the store, and when I made my way towards him, he very promptly walked on me—almost too promptly. I thought he had forgot to wash his hands, and they were all smeared with the harness oil. I bought a half dollar's worth of goods, which, fortunately for me, was already wrapped up in a package, but the package bore two great oily smears that I saw where the clerk had taken hold of it to deliver it to me. And when the clerk gave me back half a dollar in change, that was also dripping with harness oil. Possibly harness oil has its place in the retail store, but the place is not smeared all over packages and the money given in change to a customer.

If I were the proprietor of that store I should make it a point to talk "Patch" to a clerk who would do such a trick as this, until he would know whether he was about a horseback to use a stank expression. This is no excuse for such carelessness, or rather, for such lack of neatness. Merchants should watch their clerks and see that their hands are kept clean, and that after handling dirty articles they are carefully washed before serving another customer. It is also disagreeable, in my opinion, for a clerk showing a great number of smears, when he checks in frequent streams in the cupholder or on the floor to wait on such a clerk is tolerated, not of course, in the best stores, but in some of the smaller stores, where the retailer has every need of neatness in securing the confidence and good will of his trade. I have seen a clerk who I think I would not tolerate, if I were a merchant, is that of smoking while waiting on customers. I have seen a clerk who has a half burned cigar in his mouth, and when he waited on a lady or a man, he would puff this smoke in his ear or face, much to their discomfort. If a man believes in smoking, let him take a half hour off at dinner time and let him smoke at that time. But this speaking abuse is not always confined to clerks. I have seen merchants themselves do the same disagreeable act, and I have seen the following said to clerks, who were to blame if customers left them.

Be tidy in the store at all times. If you are not clean, do not try to cultivate this habit in the store during working hours, and endeavor to have your clerks follow the same course. If the latter cannot be trained to observe habits of neatness and tidiness they are beyond redemption, and they ought to engage in bodily carrying, or some other useful occupation, where their habits will not offend their people.

### Experiment in Pislet Culture.

To carry 100,000 Ontario bass them in the cement and transparent tanks in the lakes of British Columbia in the vicinity of Vancouver is a task which the Dominion government has undertaken, and efforts to ship bass by any other kind of fish of eastern waters further than Manitoba, and Territories have been unsuccessful, therefore the present move is very much of an experiment.

For many days Mr. J. Parker and a staff of men have been engaged fitting up a car for this purpose. A baggage car will be used, along the side of which will be ranged a couple of dozen barrels, and in the centre of the car tanks for holding fresh water. The barrels, which will contain the water, will be connected by tubes and fresh water will constantly be pumped through them from the tanks.

But the problem which has perplexed the authorities in the shipping of fish such a long distance is that of charging the water with sufficient quantity of oxygen to maintain the life of the fish for the five or six days of the journey. A novel device has been determined upon, which it is expected will overcome this difficulty. This device is operated on the principle of a fanning mill and is intended to charge the water in which the fish swim with the required oxygen as often as is required.

There is some danger that the fish may die from starvation, as it is known that fish, while in a tank, will not eat, and, if they do, will not take food of any kind. It is thought many will perish from this cause than any other.

The fish will be taken from a lake near Belleville, Ont., and brought to Brockville in the city of Brockville on board a scow. At Brockville they will be placed in the car prepared for this purpose, and will be attached to the Pacific Express at Carleton Place and hurried across the country. None but healthy minnows about two inches in length will be selected.

The water to be stored in the device for pumping oxygen into the water was recently tested by government officials at one of the Gattineau lakes and proved successful.

### Freight Reductions for Edmonton.

A party of C. P. R. officials composed of Messrs. W. R. McInnes, assistant freight traffic manager; H. L. Lauder, general freight agent; W. H. Miles, travelling freight agent; N. E. Brooks, superintendent of the C. & E. M. R., and a conference with the business men of Edmonton regarding freight rates. Edmonton is the only city in the west on Monday last week to enable the Government of Edmonton and its sister town of Strathcona to do a wholesale business with town by town. The C. P. R. and Red Deer, the company agreed to comply with the request of the board of trade and grant a reduction of 50 per cent. on the first five classes of freight for shipment along the C. & E. M. R.

The most important question, however, was the rates on grain, to Kootenay and the Pacific coast. A reduction of 5 cents per 100 lbs. on oats for export beyond Vancouver, and an equal reduction on Red Deer, was promised to possibly do better in case of a form market bettered upon. They contended that the grain rate to Kootenay was the most important basis with Americans. However, they promised that in event of a profitable market for western oats being realized they would grant special rates to that district in place of the present basis for reaching that market.

These concessions are understood to be very gratifying to the people there, but they are not considered to be sufficiently comprehensive.

### LEADING COMMERCIAL HOTELS

WINSPIRO

**HOTEL LELAND**  
Headquarters for commercial men.  
CITY HALL SQUARE.

DRYDEN, ONT.

**DRYDEN HOTEL**

A. R. HUTCHINSON, Prop.  
Headquarters for commercial and mining men and the general public.

RAPID CITY

**QUEEN'S HOTEL**  
THOS. EVOY, Prop.

Headquarters for commercial travellers. Free bus meets all trains.

BIRMLE

**ROSSIN HOUSE**

R. FESWICK, Prop.

Good accommodation; telephone connection with the station; private parlour; inside closet. Livery in connection.

YORKTON

**BALMORAL HOUSE**

McDOUGALL BROS., Prop.

Good sample rooms and every accommodation for the general public. Heated by furnace and lighted by acetylene gas.

THERESA

**LELAND HOTEL**

W. F. LEE, Prop.

First-class accommodation for commercial travellers.

GLENBORO

**QUEEN'S HOTEL**

M. E. NEVINS, Prop.

Best hotel on the Glenboro branch. Three large and first-class sample rooms.

NAPIKA

**HOTEL LELAND**

H. HALLONQUIST, Prop.

First-class in every department. Sample rooms. Every convenience for the travelling public. Opposite C. P. R. depot.

DELOVAINE

**PALACE HOTEL**

LALD &amp; McGARVEY, Prop.

New building, new furnishings, furnace heating, acetylene gas. First-class. Large sample rooms.

MAGREGOR, MAN.

**THE STANLEY HOUSE**

E. WATSON, Prop.

First-class accommodation for travellers, comfortable sample rooms. Livery and feed stable in connection. All kinds of teaming attended to.

ELKHORN

**HOTEL MANITOBA**

W. J. DIXON, Prop.

New building; new furnishings; furnace heating; acetylene gas. First-class. Large sample rooms.

FLEMING

**WINDSOR HOTEL**

W. GEO. CLEVELLY, Prop.

New management. Rates \$1.25. Renovated and refurnished. Commodious sample rooms. Heated by hot air. Livery and feed stable in connection. Inside closet.

ROSTERN

**OCCIDENTAL HOTEL**

H. A. McEWEN, Prop.

New house. Up-to-date appointments.

PRINCE ALBERT

**PRINCE ALBERT HOTEL**

DAVID POLLOCK, Prop.

First-class accommodation. Good sample rooms for commercial men. Bus meets all trains.

RED DEER, ALTA.

**ALBERTA HOTEL**

HEATY &amp; BRINDLE, Props.

C. and E. dining hall, good sample rooms and every accommodation for commercial travellers and the general public.

WETASKIWIN, ALTA.

**CRITERION HOTEL**

F. M. HAMILTON, Proprietor.

New buildings, newly furnished, hot and cold baths, heated by furnace and lighted with gas; good sample rooms.

STRATHCONA

**STRATHCONA HOUSE**

W. H. SHEPPARD, Prop.

First-class. Opposite depot.

EDMONTON

**ALBERTA HOTEL**

JACKSON &amp; GIBBSON, Proprietors.

Sample rooms. Free bus. Livery in connection.

MACLEOD

**MACLEOD HOTEL**

THOS. WILTON, Prop.

Good sample rooms and every accommodation for commercial travellers and the general public. Rates \$2.00 per day. Bus to and from all trains.

PINCHER CREEK

**HOTEL ARLINGTON**

MITCHELL &amp; DOBBIE, Props.

New building, new and commodious bed rooms, parlors, bathrooms and sample rooms. Newly furnished. Heated through out by hot air, lighted by gas. Electric bells in every room. Cuisine second to none; and the best stock of wines, liquors and cigars in Alberta.  
Miss Mitchell, Matron.

CRANBROOK, B. C.

**CRANBROOK HOTEL**

JAS. RYAN, Prop.

Large and convenient sample rooms and good accommodation for commercial men. Rates \$2.00 a day.

REVELSTOCK, B. C.

**HOTEL VICTORIA**

JOHN V. PERKS, Prop.

Large and well lighted sample rooms. Hot air and electric light and bells in every room. First grill room in connection for the convenience of guests arriving and departing by night train.

NEW WESTMINSTER, B. C.

**HOTEL COLONIAL**

J. E. INSLY, Proprietor.

Special attention given to commercial travellers. Charges moderate.

VANCOUVER

**HOTEL LELAND**

R. DOWSWELL, PROPRIETOR.

Refurnished and remodelled. Rates \$1.50 to \$2.00 per day. Long distance phone. One block from city hall. Large steam boat wharves. W. E. Grigor, Manager.

VICTORIA

**HOTEL VERNON**

JAS. PATTERSON, Mgr.

Headquarters for commercial and business men. Free bus and sample rooms.

KAMLOOPS

**GRAND PACIFIC HOTEL**

P. A. BARNHART, Proprietor.

The best hotel in Kamloops. Ample accommodation.

GREENWOOD, B. C.

**IMPERIAL HOTEL**

GRAHAM &amp; PARRY, Proprietors.

Headquarters for commercial travellers and all business men.

PHOENIX, B. C.

**THE VICTORIA HOTEL**

B. C. Hotel Co., Ltd., B. TOMKINS, Mgr.

Electric bells, electric lighted, furnace heated, finest liquors and cigars. Sample rooms.

**CANADIAN  
PACIFIC**

**CHEAP RATES**

— TO THE —

**Old Country,**

— THE —

**Pan-American  
Exhibition  
at Buffalo,**

— AND —

**Excursion Rates**

TO THE

**East and West,**

INCLUDING

**California, Japan  
and Australia.**

**First Class Sleeping Cars**

on All Trains to

**MONTREAL, TORONTO,  
VANCOUVER, SEATTLE.**

**TOURIST CARS TO**

**VANCOUVER, SEATTLE.**

— ON —

**Monday, Thursday and Saturday,**

AND FOR

**MONTREAL and BOSTON**

on Saturday.

**TORONTO . . . . .**

Monday and Thursday.

For full information apply to—

**Wm. STITT, C. E. McPIERSON,**  
Asst. Gen. Pass. Agent, Gen. Pass. Agt.  
WINNIPEG.



**Round Trip  
Excursion  
Rates**

SOUTH,  
EAST, and  
WEST

Through California Tourist Car  
every Wednesday

OCEAN TICKETS TO ALL POINTS

Trains arrive and depart from the Canadian Northern depot, Water street, Winnipeg, as follows:

Leaves Winnipeg daily at 1.45 p.m.  
Arrives Winnipeg daily at 1.30 p.m.

For information call on your nearest Canadian Northern Ticket Agent, or write

CHAS. S. FEE, G. P. & T. A., St. Paul,  
H. SWINFORD, G. A., Winnipeg.

**ATLANTIC STEAMSHIP LINES.**

**ALLAN LINE**— From Montreal, Corinthian, Oct. 12; Pershing, Oct. 19

**REVER LINE**— From Montreal, Lake Manitoba, Oct. 11; Lake Ontario, Oct. 18

**DOMINION LINE**— From Portland, Vancouver, Oct. 12; Donibon, Oct. 19

**FRISCO-CANADIAN LINE**— Montreal, Wasaw, Chatter, Oct. 17; Gault, Castle, Oct. 24

**WHITE STAR LINE**— From New York, Majestic, Oct. 9; Olympic, Oct. 16

**CANADIAN LINE**— From New York, Embria, Oct. 12; Lucania, Oct. 19

**ATLANTIC LINE**— From Boston, Utopia, Oct. 12; Ivernia, Oct. 19

**DOMINION LINE**— From Boston, New England, Oct. 10; Commonwealth, Oct. 17

**ALLAN STATE**— From New York, Mongolian, Oct. 23; Nebraska, Oct. 30

**ANCHOR LINE**— From New York, City of Rome, Oct. 12; Astoria, Oct. 19

Passengers ticketed through to all points in Great Britain and Ireland, and at specially low rates to all parts of the European Continent. Freight passage arranged through or railway ticket agent, or to W. F. F. CUMMINGS, General Agent, Winnipeg, Man.

RATES—Cabin, \$50, \$55, \$60, \$70, \$80 and upwards. Second cabin, \$35, \$37.50, \$40 and upwards. Steerage, \$24.50, \$25.50, \$26 and upwards.



**Rubbers  
Rubbers  
Rubbers**

**RUSH  
ORDERS**

Or SORTING ORDERS filled the same day as received. Our weekly shipments from factory keeping our stock well assorted.

For Western Trade our BRONCHO OVERSHOE is a seller.

**THE CANADIAN RUBBER CO.**  
Of Montreal

BOX 353

**WINNIPEG BRANCH**

**MOYIE LUMBER COMPANY**

Manufacturers and Dealers in

**LUMBER LATH SHINGLES  
MOULDINGS  
CEDAR POSTS AND POLES**

DRY KILN AND PLANERS IN CONNECTION

SAMUEL GRANT, Manager

MOYIE, B.C.

**PATENTS TRADE MARKS  
AND  
DESIGNS**  
PROCURED IN ALL COUNTRIES  
SPECIAL ATTENTION GIVEN TO  
PATENT LITIGATION  
PAMPHLET SENT FREE ON APPLICATION  
RIDOUT & MAYBEE, 103 BAY STREET  
TORONTO

PLEASE NOTIFY.

Subscribers to The Commercial are requested to notify this office of any irregularity in the receipt of their paper.

**THOS. CLEARHUE**

BROCKVILLE, ONT.

Manufacturer of



**Gloves and  
Mitts**

And Wholesale Dealer in

**Moccasins and Socks**

Winnipeg Agency: 285 MARKET ST.

N.B.—A good line now on hand for a selling trade. Prompt attention to letter orders.

P. O. Box 272

**Grain Tickets**

AND OTHER STATIONERY.

**SEND FOR SAMPLES**

**THE FRANKLIN PRESS Ltd.** Opp. Grain Exchange, Winnipeg

THE CELEBRATED . . .

# KEEWATIN FLOUR

FIVE ROSES AND PATENT BRANDS

BEST IN THE WORLD

LAKE OF THE WOODS MILLING CO. Ltd.

Offices at Montreal, Toronto, Ottawa, St. John, Winnipeg, Keewatin, Portage la Prairie, Vancouver and Nelson

## RAT PORTAGE LUMBER COMPANY

LIMITED

MANUFACTURERS OF . . .

**LUMBER,  
LATH, SHINGLES,  
SASH,  
DOORS**

AND ALL KINDS  
OF WOODWORK

Head Office and Mills at RAT PORTAGE, ONT.

Branch: Point Douglas Avenue, WINNIPEG

WESTERN HEADQUARTERS

FOR ALL LINES OF

# Xmas Goods

Fancy Goods, Toys, Toy Books, etc. A large range of Xmas Cards, Calendars, Bibles, Bound Books, Sleighs and Crokinole, etc. Xmas number of Graphic, Pears, etc., at 36¢ each.

Stationery and Office Supplies, Wrapping Paper, Paper Bags, Oyster Pails, School Books and School Supplies.

## CLARK BROS. & CO.

P.O. Box 1240

WINNIPEG



## GAMES FOR FALL EVENINGS

Pool tables in two sizes, 51x28 and 63x34. Carrom Boards, Crokinole, Fort, Bagatelle, Table and Floor Croquet, Ten Pins, Battledore, Ring Toss, Parcheesi, Halma, Century Run, Race Cup, Steeplechase, Straw Targets with Darts, Vacuum Tipped Pistols and Rifles and a great variety of Boxed Games to retail from 5¢ to \$2.00. Chess, Checkers, Backgammon and Dominoes, Whist and Cribbage Counters, Chess and Checker Boards, Footballs, Punching Bags, Boxing Gloves. Order from

THE CONSOLIDATED STATIONERY COMPANY, Ltd.  
WINNIPEG, MAN.

The W. H. Malkin Co.  
LIMITED.

Importers and  
Wholesale Grocers

CONSIGNMENTS OF DAIRY BUTTER  
SOLICITED. HIGHEST PRICES  
REALIZED. PROMPT RETURNS  
MADE.

137 Water St., - VANCOUVER, B.C.

LEITCH BROS.

Oak Lake

"Anchor  
Brand" **Flours**

FROM NO. 1 HARD WHEAT.

Bran, Shorts and all kinds of  
Chopped Feed and Grain.

ADDRESS

OAK LAKE, MAN.

Royal Planing Mills AND  
Lumber Yard C. W. MURRAY

Market St. East, Winnipeg

A Specialty of Doors, Bush  
Mouldings, Turnings, Hardwood  
Finish, Cabinet and Interior  
Finish, etc. Dry Kilns.

Telephone 715  
P. O. Box 380E. NEWELL,  
General Manager

JAS. MCCREADY & CO.  
LIMITED

WHOLESALE . . .

Boat and Shoe  
Manufacturers

MONTREAL, QUE.  
W. WILLIAMS, Agent.

T & B  
PLUG  
AND  
CUT  
TOBACCO

Try the new fours. They are giving you  
the satisfaction. Pays the retailer a hand  
some profit.

THE GEO. E. TUCKETT & SON CO., LTD.  
HAMILTON

Sole &amp; Perms. Agents, Winnipeg.