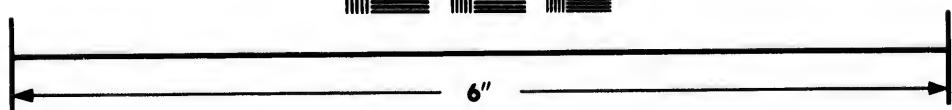
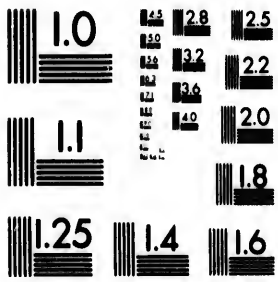


**IMAGE EVALUATION
TEST TARGET (MT-3)**



**Photographic
Sciences
Corporation**

23 WEST MAIN STREET
WEBSTER, N.Y. 14580
(716) 872-4303

1.8
2.0
2.2
2.5
2.8
3.2
3.6
4.0

**CIHM/ICMH
Microfiche
Series.**

**CIHM/ICMH
Collection de
microfiches.**



Canadian Institute for Historical Microreproductions / Institut canadien de microreproductions historiques

1.0
1.2
1.4
1.6

© 1984

phic Notes/Notes techniques et bibliographiques

est
of this
,
ange
elow.

L'Institut a microfilmé le meilleur exemplaire qu'il lui a été possible de se procurer. Les détails de cet exemplaire qui sont peut-être uniques du point de vue bibliographique, qui peuvent modifier une image reproduite, ou qui peuvent exiger une modification dans la méthode normale de filmage sont indiqués ci-dessous.

- Coloured pages/
Pages de couleur
- Pages damaged/
Pages endommagées
- Pages restored and/or laminated/
Pages restaurées et/ou pelliculées
- Pages discoloured, stained or foxed/
Pages décolorées, tachetées ou piquées
- Pages detached/
Pages détachées
- Showthrough/
Transparence
- Quality of print varies/
Qualité inégale de l'impression
- Includes supplementary material/
Comprend du matériel supplémentaire
- Only edition available/
Seule édition disponible
- Pages wholly or partially obscured by errata slips, tissues, etc., have been refilmed to ensure the best possible image/
Les pages totalement ou partiellement obscurcies par un feuillet d'errata, une pelure, etc., ont été filmées à nouveau de façon à obtenir la meilleure image possible.

black)/
(ou noire)

distortion
re ou de la
re

may
sible, these
s ajoutées
ns le texte,
pages n'ont

checked below/
n indiqué ci-dessous.

22X

26X

30X

<input type="checkbox"/>	<input checked="" type="checkbox"/>	<input type="checkbox"/>	<input type="checkbox"/>	<input type="checkbox"/>	<input type="checkbox"/>	<input type="checkbox"/>	<input type="checkbox"/>	<input type="checkbox"/>	<input type="checkbox"/>	<input type="checkbox"/>	<input type="checkbox"/>	<input type="checkbox"/>	<input type="checkbox"/>
--------------------------	-------------------------------------	--------------------------	--------------------------	--------------------------	--------------------------	--------------------------	--------------------------	--------------------------	--------------------------	--------------------------	--------------------------	--------------------------	--------------------------

20X

24X

28X

32X

The copy filmed here has been reproduced thanks to the generosity of:

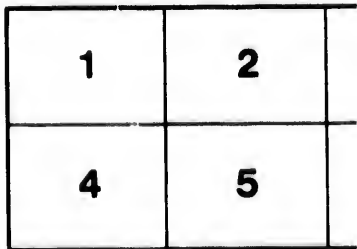
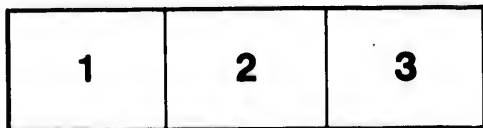
Library of the Public
Archives of Canada

The images appearing here are the best quality possible considering the condition and legibility of the original copy and in keeping with the filming contract specifications.

Original copies in printed paper covers are filmed beginning with the front cover and ending on the last page with a printed or illustrated impression, or the back cover when appropriate. All other original copies are filmed beginning on the first page with a printed or illustrated impression, and ending on the last page with a printed or illustrated impression.

The last recorded frame on each microfiche shall contain the symbol \rightarrow (meaning "CONTINUED"), or the symbol ∇ (meaning "END"), whichever applies.

Maps, plates, charts, etc., may be filmed at different reduction ratios. Those too large to be entirely included in one exposure are filmed beginning in the upper left hand corner, left to right and top to bottom, as many frames as required. The following diagrams illustrate the method:



L'exer
géné

Les in
plus g
de la
confo
filma

Les ex
papie
par le
derni
d'imp
plat,
origin
premi
d'imp
la der
empr

Un de
derni
cas: l
symb

Les c
filmé
Lorsq
repro
de l'a
et de
d'ima
illust

thanks

L'exemplaire filmé fut reproduit grâce à la
générosité de:

La bibliothèque des Archives
publiques du Canada

quality
ibility
ne

Les images suivantes ont été reproduites avec le
plus grand soin, compte tenu de la condition et
de la netteté de l'exemplaire filmé, et en
conformité avec les conditions du contrat de
filimage.

filmed
on
mpres-
All
on the
res-
rinted

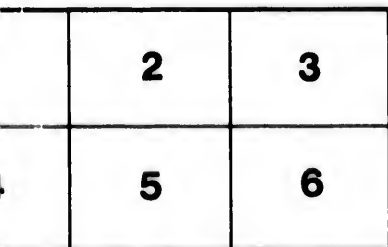
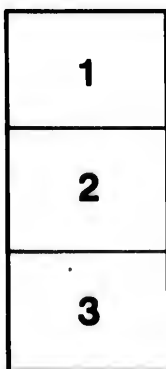
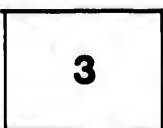
Les exemplaires originaux dont la couverture en
papier est imprimée sont filmés en commençant
par le premier plat et en terminant soit par la
dernière page qui comporte une empreinte
d'impression ou d'illustration, soit par le second
plat, selon le cas. Tous les autres exemplaires
originaux sont filmés en commençant par la
première page qui comporte une empreinte
d'impression ou d'illustration et en terminant par
la dernière page qui comporte une telle
empreinte.

ne
CON-
ID"),

Un des symboles suivants apparaîtra sur la
dernière image de chaque microfiche, selon le
cas: le symbole \rightarrow signifie "A SUIVRE", le
symbole ∇ signifie "FIN".

st
to be
ed
oft to
as
the

Les cartes, planches, tableaux, etc., peuvent être
filmés à des taux de réduction différents.
Lorsque le document est trop grand pour être
reproduit en un seul cliché, il est filmé à partir
de l'angle supérieur gauche, de gauche à droite,
et de haut en bas, en prenant le nombre
d'images nécessaire. Les diagrammes suivants
illustrent la méthode.



KEEP THIS FOR FUTURE REFERENCE, YOUR FRIENDS MAY WANT IT.

CANADA TRUSS FACTORY.

ESTABLISHED 1856.

F. GROSS,

SURGICAL INSTRUMENT MAKER,

712 CRAIG STREET, MONTREAL.

Surgical and Veterinary Instruments on hand and made to order.

TEETH SYPHONS FOR MILKING.

Elastic Stockings, Knee Caps and Abdominal Belts

Anti-Rheumatic Knee Caps, Stockings, &c.

On hand or made to order, for the support of Varicose Veins. Sprains, Weak Joints, &c.

AIR PILLOWS, CUSHIONS, &c.

DIRECTIONS FOR MEASURING.

Take the measure in the morning immediately after rising; I allow for compression.

Indicate the measure around the limb in inches opposite the lines of the cut as high as required; also length above and below the knee.

If only one Stocking is required, and wanted to lace, state for which leg.

For Abdominal Belts, give circumference of waist, also circumference of body two inches below highest projection of hip bone.



THE
EMPIRE
BANDAGE
65c. 75c. \$1.00.
AND
ABDOMINAL
SUPPORTER
\$2.50 each.

TO CLEAN ELASTIC HOSIERY AND BELTS.

Soak for a couple of minutes in lukewarm suds, made of Castile Soap, squeezing the article in the hands (do not twist it); rinse thoroughly in two or more waters (moderately warm) until soap suds and dirt are removed; place between two dry towels, and pat with the hands until nearly dry, then hang in a moderately warm room (do not expose to direct heat), and press cold iron.

Specials made to order at the risk of the purchaser, and always sent, unless otherwise specified.

PRICE LIST

SILK.	PER PAIR.	THREAD	PER PAIR.
From T to H	\$10 00	From T to H	\$7 50
" Made to Lace.	14 00	" Made to Lace,	10 50
From T to C	\$4.00 and 5 00	From T to C	\$2.50 and 3 00
" Made to Lace,	6 50	" Made to Lace,	4 50
From T to A	7 50	From T to A	5 00
" Made to Lace,	11 00	" Made to Lace,	7 50
From C to A	3 00	From C to A	2 00
" Made to Lace,	4 75	" Made to Lace,	3 25
From P to C	3 50		
" Made to Lace,	4 75		
From T to P	3 50		
" Made to Lace,	5 00		

Silk Abdominal Belts to draw on, \$6.00; Thread Abdominal Belts, to draw on, \$4.00. If made to Lace in the back, 50c. extra.

Loops (for drawing on Stockings) put on if desired.

LADIES' ROOM AND LADY ATTENDANTS.

The Medicated Body Band for Colic, Cramps, Cholera, Diarrhoea and all Bowel Complaints, only \$1 25.

Send for Circulars and Price List of Trusses, "The Deaf Made to Hear," &c.

F. GROSS, 712 RUE CRAIG.

Fabrique Canadienne de Bandages, Etablie en 1856. F. GROSS, 712 Rue Craig, fabricant et inventeur de Bandages a Ressorts Elastiques,

Manufacturier d'Instruments de tout genre pour les Difformites Physiques, F. GROSS, 712 Rue Craig, Montreal.

TELEPHONE No. 2342.

CANADA TRUSS FACTORY.

ESTABLISHED 1856.



Before Using



After Using.

F. GROSS

GROSS' CHEST EXPANDING STEEL SHOULDER BRACE.

712 CRAIG STREET, Near Victoria Square, MONTREAL,

MANUFACTURER OF ALL KINDS OF

Instruments for Physical Deformities, Artificial Limbs,
Gross' Improved Chest Expanders and Shoulder Brace,
Parlor Gymnasiums, Indian Clubs and Dumb Bells.

THE DEAF MADE TO HEAR! THE LAME MADE TO WALK!
SYRINGES and all kinds of RUBBER GOODS of every description.

GROSS' PATENT COMPOSITE RADICAL CURE TRUSS.

ALSO EVERY OTHER KIND OF TRUSS ON HAND OR MADE TO ORDER.

Suspensories and all other kinds of Bandages in great variety and at all prices.
Electric Pulvermacher Chains, Electro-Curative Belts, Bands and Insoles,
For Rheumatism, Neuralgia, and all Diseases of the Nerves.

Parlor Gymnasium for Gymnastic Exercises - - Price \$4.00.

Galvanic and Faradic Batteries, Magneto-Electric Machines
for Nervous and other Diseases, \$5.00, \$7.50 and \$9.00.

F. GROSS'

CHEST EXPANDING STEEL SHOULDER BRACES,
712 CRAIG STREET, Near Victoria Square, MONTREAL.

This is an entirely new and superior article for Ladies and Gentlemen who have acquired a habit of stooping. This Brace is certain to answer the purpose of keeping the chest expanded and the body upright. The two Steels on the back running over the shoulder blades, giving a gentle and even pressure, will prove conducive to health and gracefulness; and, being strong and well made, will last a long time, and always feel comfortable. For Gentlemen, this Chest Expander will enable them to do away with the common Suspenders (which are injurious to health).

CAUTION TO PARENTS.

Parents, look to your children! Gross' newly-invented Steel Shoulder Braces are almost indispensable for children, as they are liable to contract the habit of stooping and shrugging their shoulders at school, causing them to grow narrow-chested, and laying the foundation for consumption and lung diseases. Parents should bear this in mind, as wearing my Brace will counteract this bad habit.

The price of my "CHEST EXPANDING STEEL SHOULDER BRACE" is:—

For Ladies.....	\$2.00, or best \$3.00.
For Gents.....	2.50, or best 3.50, with Brace Ends.
For Misses.....	\$1.50, 2.00, or best 2.50.
For Boys.....	\$2.00, 2.50, or best 3.00, with Brace Ends.
Plain Shoulder Braces for Ladies or Gents, \$1.50; Children, \$1.25 and \$1.00.	

Take circumference of waist, and length from under the armpit to top of hip-bone.
By remitting amount, as also 15 cents postage stamps, I will forward them by parcel post, free of charge.

TRUSSES

Treatment of Hernia with Mechanical Appliances.

The newly-invented Steel Spring Truss covered with soft rubber, is one of the best and easiest Trusses to wear. It can be washed, and used while bathing. It is admirably adapted for Adults and Infants.

DIRECTIONS FOR MEASURING AND ORDERING TRUSSES.—Send circumference, one inch below highest projection of hip bone. State if for right, left or double, also age and sex. If for both sides, if one is worse than the other. Also state if you have hard work to do.

PRICE.—Adults, Single \$3.00 or \$4.00; Double \$5.00 or \$6.00. Postage 25 cents.
Children " \$2.00 or \$2.50; " \$3.00 or \$4.00. " 15 "

Remit amount and I will forward it by Parcel Post.

MY PATENT LIMBS ARE LIGHT AND DURABLE. SEND FOR CIRCULARS.

BABY will not become bow-legged if GROSS' BABY CARRIER is used in teaching it to walk. The Baby Carrier costs only \$1.00, and no baby should be taught to walk without one.

Send for Circulars and Price List of Trusses, "The Deaf Made to Hear," &c.

F. GROSS, 712 RUE CRAIG.

Manufacturier d'Instruments de tout genre pour les Différentes Physiques, F. GROSS, 712 Rue Craig, Montreal.

Fabrique Canadienne de Bandages. Etablie en 1856. F. GROSS, 712 Rue Craig, fabricant et inventeur de Bandages a Ressorts Elastiques,

