

**CIHM
Microfiche
Series
(Monographs)**

**ICMH
Collection de
microfiches
(monographies)**



Canadian Institute for Historical Microreproductions / Institut canadien de microreproductions historiques

© 1998

Technical and Bibliographic Notes / Notes techniques et bibliographiques

The Institute has attempted to obtain the best original copy available for filming. Features of this copy which may be bibliographically unique, which may alter any of the images in the reproduction, or which may significantly change the usual method of filming are checked below.

- Coloured covers / Couverture de couleur
- Covers damaged / Couverture endommagée
- Covers restored and/or laminated / Couverture restaurée et/ou pelliculée
- Cover title missing / Le titre de couverture manque
- Coloured maps / Cartes géographiques en couleur
- Coloured ink (i.e. other than blue or black) / Encre de couleur (i.e. autre que bleue ou noire)
- Coloured plates and/or illustrations / Planches et/ou illustrations en couleur
- Bound with other material / Relié avec d'autres documents
- Only edition available / Seule édition disponible
- Tight binding may cause shadows or distortion along interior margin / La reliure serrée peut causer de l'ombre ou de la distorsion le long de la marge intérieure.
- Blank leaves added during restorations may appear within the text. Whenever possible, these have been omitted from filming / Il se peut que certaines pages blanches ajoutées lors d'une restauration apparaissent dans le texte, mais, lorsque cela était possible, ces pages n'ont pas été filmées.
- Additional comments / Commentaires supplémentaires:

L'Institut a microfilmé le meilleur exemplaire qu'il lui a été possible de se procurer. Les détails de cet exemplaire qui sont peut-être uniques du point de vue bibliographique, qui peuvent modifier une image reproduite, ou qui peuvent exiger une modification dans la méthode normale de filmage sont indiqués ci-dessous.

- Coloured pages / Pages de couleur
- Pages damaged / Pages endommagées
- Pages restored and/or laminated / Pages restaurées et/ou pelliculées
- Pages discoloured, stained or foxed / Pages décolorées, tachetées ou piquées
- Pages detached / Pages détachées
- Showthrough / Transparence
- Quality of print varies / Qualité inégale de l'impression
- Includes supplementary material / Comprend du matériel supplémentaire
- Pages wholly or partially obscured by errata slips, tissues, etc., have been refilmed to ensure the best possible image / Les pages totalement ou partiellement obscurcies par un feuillet d'errata, une pelure, etc., ont été filmées à nouveau de façon à obtenir la meilleure image possible.
- Opposing pages with varying colouration or discolourations are filmed twice to ensure the best possible image / Les pages s'opposant ayant des colorations variables ou des décolorations sont filmées deux fois afin d'obtenir la meilleure image possible.

This item is filmed at the reduction ratio checked below / Ce document est filmé au taux de réduction indiqué ci-dessous.

	10x		14x		18x				22x		26x			30x	
	12x		16x		20x				24x		28x			32x	

The copy filmed here has been reproduced thanks to the generosity of:

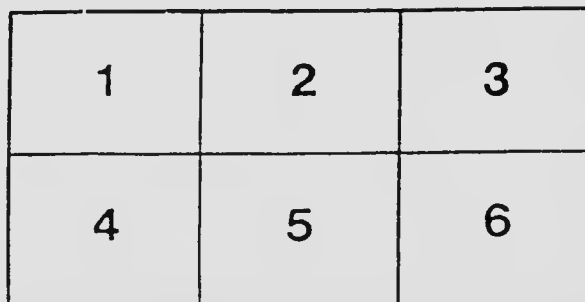
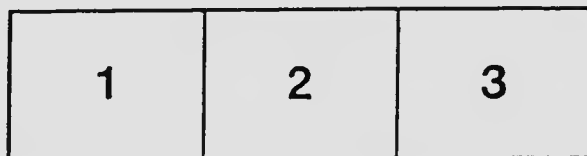
Legislative Library
Victoria

The images appearing here are the best quality possible considering the condition and legibility of the original copy and in keeping with the filming contract specifications.

Original copies in printed paper covers are filmed beginning with the front cover and ending on the last page with a printed or illustrated impression, or the back cover when appropriate. All other original copies are filmed beginning on the first page with a printed or illustrated impression, and ending on the last page with a printed or illustrated impression.

The last recorded frame on each microfiche shall contain the symbol \rightarrow (meaning "CONTINUED"), or the symbol ∇ (meaning "END"), whichever applies.

Maps, plates, charts, etc., may be filmed at different reduction ratios. Those too large to be entirely included in one exposure are filmed beginning in the upper left hand corner, left to right and top to bottom, as many frames as required. The following diagrams illustrate the method:



L'exemplaire filmé fut reproduit grâce à la générosité de:

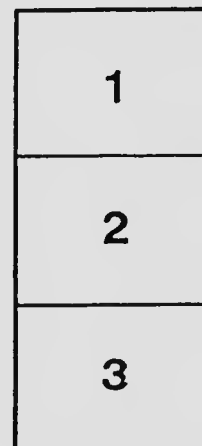
Legislative Library
Victoria

Les images suivantes ont été reproduites avec le plus grand soin, compte tenu de la condition et de la netteté de l'exemplaire filmé, et en conformité avec les conditions du contrat de filmage.

Les exemplaires originaux dont la couverture en papier est imprimée sont filmés en commençant par le premier plat et en terminant soit par la dernière page qui comporte une empreinte d'impression ou d'illustration, soit par le second plat, selon le cas. Tous les autres exemplaires originaux sont filmés en commençant par la première page qui comporte une empreinte d'impression ou d'illustration et en terminant par la dernière page qui comporte une telle empreinte.

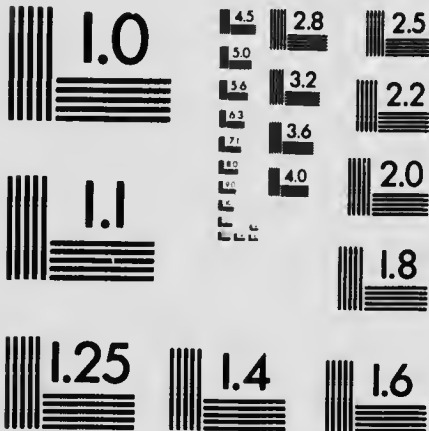
Un des symboles suivants apparaîtra sur la dernière image de chaque microfiche, selon le cas: le symbole \rightarrow signifie "A SUIVRE", le symbole ∇ signifie "FIN".

Les cartes, planches, tableaux, etc., peuvent être filmés à des taux de réduction différents. Lorsque le document est trop grand pour être reproduit en un seul cliché, il est filmé à partir de l'angle supérieur gauche, de gauche à droite, et de haut en bas, en prenant le nombre d'images nécessaire. Les diagrammes suivants illustrent la méthode.



MICROCOPY RESOLUTION TEST CHART

(ANSI and ISO TEST CHART No. 2)



APPLIED IMAGE Inc

1653 East Main Street
Rochester, New York 14609 USA
(716) 482 - 0300 - Phone
(716) 288 - 5989 - Fax

SOUVENIR BOOK

and HANDY GUIDE to CITY and DISTRICT

VICTORIA, B.C.



View from the Parliament Buildings

Published by
The Victoria and Island Development Association
Free Information Bureau Belmont House Publicity Commissioner's Office

P
917.113
V64-550

REFERENCE

INDEX

Facts About Victoria	- - - - -	1
City Street Cars	- - - - -	2
Saanich Interurban Line	- - - - -	4
Astrophysical Observatory	- - - - -	6
Favorite Drives and Motor Tours	- - - - -	8
Bathing Beaches	- - - - -	10
Victoria Theatres	- - - - -	10
Sports and Recreations	- - - - -	11
Map	- - - - -	12
Other Points of Interest	- - - - -	14
Short Excursion by Rail and Sea	- - - - -	17
Historical	- - - - -	18
Industrial	- - - - -	18
Steamship Schedules	- - - - -	20
City Street Car Time Table	- - - - -	22
Saanich Interurban Time Table	- - - - -	23
Canadian National and E. and N. R. R. Time Tables	- - - - -	24

GENERAL DIRECTIONS

The Carnegie Public Library is situated on the corner of Yates and Blanshard Streets.

The principal streets are Government and Douglas streets, running North and South; Fort, Yates, View, Johnson and Pandora Street, running East and West.

The Street Railway System of Victoria centres in the district bounded and intersected by the thoroughfares described above and cars may be boarded at the intersection of any of these streets.

The depot of the B.C.E.R. Saanich Interurban Line is at 1505 Douglas street, opposite City Hall.

The Esquimalt & Nanaimo (C.P.R.) Railway Station is on Store street, at the foot of Cormorant street.

The C.N.R. Depot is on Alpha street. Take No. 2 car North.



A Few Facts About Victoria

The Beautiful City of Victoria—Canada's Finest Summer and Winter Resort has numerous natural advantages to offer Tourists and Settlers alike.

Unrivalled climate, matchless scenery and ideal sur-



The Parliament Buildings

roundings. It has been described as "A Bit of England on the Shores of the Pacific."

Situate on Vancouver Island, Canada's first and last port of call on the Pacific.

Average Winter Temperature, 40° Above Zero.

Average Summer Temperature, 60°.

T
914 =
100

Low Rainfall—average for 27 years only 27.01 inches annually, while on the lower Mainland it is about 58 inches.

VICTORIA is a healthy and modern city and possesses splendid educational facilities. In the city proper there are thirty public schools, employing 173 teachers. Every boy is required to learn manual training, and the girls are taught sewing and domestic science.

In the past few years Victoria has provided 132 miles concrete sidewalks, 65 miles boulevards, 71 miles paved streets, 8 miles cluster electric light standards and 134 miles water mains.

VICTORIA is the favorite holiday resort of Anglo-Orientals from China and Japan, who find a change of climate an imperative necessity. A number of these visitors have decided to reside permanently on Vancouver Island. Hundreds of families from the Prairie Provinces of Canada have made Victoria their home, the mild climate being a welcome change from the extremes experienced in the Middle West.

WHERE TO GO AND HOW TO GET THERE

VICTORIA contains within its boundaries, or is of easy access to, many beautiful resorts, parks and drives. The following outline will, in addition to briefly describing their attractions, tell you how to reach them:

CITY CARS

Beacon Hill Park (Car Sign No. 3.)—Seven minutes by car from the city. Magnificent view of sea and snow-capped mountains. Various interesting monuments and relics. Picturesque lake, bridge and flower beds. Take car on Government at Fort Street.

Gorge Park (Car Sign No. 5.)—Fifteen minutes by car from the city. Victoria's premier pleasure resort. Boating, bathing, picnic grounds, open-air entertainments, Japanese Tea Gardens, scenic railway, etc., illuminated every evening. See the reversible waterfall. Take car on Yates, at Government Street.



Boating on The Gorge

Uplands and Cadboro Bay (Car Sign No. 10)—The Uplands is one of the beauty spots of Victoria. **Beach, Royal Victoria Yacht Club**

Laid out as a national park for residential purposes, it contains many fine residences. The outlying regions facing along the beach, now ideal picnic grounds. Cadboro Bay Beach, a few minutes from

Page 100

164881

the car terminus, with its two-miles of clean, firm sands, is one of the most picturesque local beaches. Boating, bathing, etc., in sheltered waters. Take car on Fort, at Government Street.

Esquimalt and Esquimalt Harbor (Car Sign No. 4).—Twenty minutes by car from the city. An interesting ride through the manufacturing portion of Victoria.—Shipyards, lumber mills, machine shops, etc. The township of Esquimalt is at the terminus of the line, and is thoroughly well worth a visit. Take car on Yates, at Government Street.

Oak Bay (Car Sign No. 1).—The residential district of Victoria. Facilities for boating. Excellent hotel. Visitors can enjoy some of the most beautiful local scenery by walking from the car terminus past the boat-house, and following the road along the sea-front. Take car on Fort, at Government Street.

Sight Seeing Motor Tour Cars leave the Information Bureau twice daily, at 10.00 a.m. and 2.30 p.m., for a tour through the Business Section, Chinatown, Residential District, Oak Bay, Marine Drive, and Beacon Hill Park. A drive of 20 miles, taking about two hours. Fare, \$1.00.

SAANICH INTERURBAN LINE

Brentwood A charming resort reached by the B. C. Electric Interurban Railway, or by motor car. It is about twelve miles from the city, situated on an arm of the sea known as Saanich Inlet and about three-quarters of an hour should be allowed for the run if a direct route is taken, although most motorists include it in the tour of the Saanich Peninsula. There is one of the finest country

hotels on the Pacific Coast at Brentwood, modern in every respect, beautifully furnished in the old English style. There are facilities for boating, bathing, tennis, croquet, badmington, billiards, fishing, shooting and a 9-hole golf course is under construction.



Butchart's Gardens

Butchart's Gardens Situated at Brentwood. Through the courtesy of Mr. R. P. Butchart, visitors are granted the privilege of viewing these wonderful sunken gardens (with the exceptions of Thursdays and Sundays), which are unsurpassed on the Pacific Coast.

Bazan Bay Dominion Government Experimental Farm (Bazan Station, 17 miles from Victoria.)—

Situated in the heart of the agricultural district of the Peninsula. Visitors are welcome at the Experimental Farm, and there is much of interest to be seen—one of the beauty spots of the Island.

Deep Bay or (Deep Bay Station, 23 miles from Victoria.)
Deep Cove —The terminus of the line. Here you can indulge in boating, bathing, fishing and loafing to your heart's content. The necessities of life, and most of the luxuries, can be obtained at the small hotel. The waters are particularly sheltered, rendering boating safe and enjoyable. Good launches can be chartered, and a variety of delightful trips can be made from this point among the surrounding islands or to points of interest on the adjacent mainland.

For above points take B. C. Interurban, at 1505 Douglas Street, opposite the City Hall.

DOMINION GOVERNMENT OBSERVATORY

**Don't Fail to See One of the Two Great Telescopes
of the World. Make a Special Trip to Observatory
Hill While in Victoria**

With the installation of the final mirror (which was cast in Belgium and shipped out of that country just three days before war was declared), the great Dominion Astrophysical Observatory on Observatory Hill (formerly Little Saanich Mountain) was in 1918 completed. Visitors should not fail to see this great seat of scientific research. Dr. J. S. Plaskett is the director.

The site for this Observatory was selected by the Government because of Victoria's unequalled climate and the low range of temperature. It commands one of the finest views on the Pacific Coast.

The Astrophysical Observatory may be reached by automobile, also by Interurban Electric Railway, starting from 1505 Douglas Street, opposite City Hall, alighting at Observatory Station. It is seven miles from Victoria, but plainly visible from the suburbs.



The Astrophysical Observatory

The Observatory is open every day, but visitors are only permitted to look through the telescope on Saturday nights, from 8 until 10 o'clock, when Dr. Plaskett lectures. Sight-seeing cars leave Yates and Blanshard Streets every Saturday at 7.30. Round trip, \$1.00.

FAVORITE DRIVES AND AUTOMOBILE TOURS

**Ocean Beach, Gordon Head
Douglas Mountain and
Cordova Bay Drive** By way of Belleville Street,
Dallas Road past the Ocean
Docks, through Beacon Hill
Park, Shoal Bay, Oak Bay,
Bowker's Road, through Uplands, Cadboro Bay, Arbutus
Road to Gordon Head, Gordon Head Road to Mt. Douglas
Park, around Mt. Douglas, past Cordova Bay, Elk Lake,
returning to the city via Royal Oak and Quadra Street.

Saanich Peninsula Drive 45 miles. Quadra Street to
Royal Oak, along east road to
Saanichton, thence to Sidney. Sidney to Mt. Newton,
along west road to Brentwood, returning to city. A trip
well worth while through semi-rural and rural districts
of great charm on the lovely Saanich Peninsula.

Goldstream This is a beautiful little drive and greatly
used as a means of spending the afternoon
on a nice picnic at the charming grove. Proceed to
Colwood, same route as last, thence to Goldstream, return-
ing same way.

**Colwood, Metchosin and
Sooke Drive** Via Gorge Road: Turn left
over Craigflower bridge, and
thence past Colwood Hotel,
keeping to left. Albert Head to Metchosin and thence
right along the Happy Valley Road to East Sooke, return-
ing via Colwood to the City.

**The Malahat Drive and
Shawnigan Lake** Proceed to the Colwood Hotel
(same route as last), turn to
right to Malahat Drive, keeping
to the right to Mill Bay, thence to the left to Shawnigan.

Victoria, Duncan, Nanaimo, This magnificent tour is un-
Alberni, Campbell River: surpassed on the continent.
The Grand Island It includes many of the
Highway Tour towns and resorts already
dealt with, Shawnigan and
Duncan drives, and all places south of the Campbell River.



View of the Farming District, Saanich

Before making this tour call at Information Bureau for cards of introduction.

Automobiles leave the Information Bureau daily, at 9.00 a.m., for Nanaimo and intermediate points, returning to Victoria at 6.30 p.m.

A special tour to Malahat Mountain and return (46 miles), can be arranged on application. Return fare, \$2.50.

Reservations for the above tours can be made at the Information Bureau.

The splendid roads traversed in touring Vancouver Island, and the varied character of the magnificent scenery have made it famous amongst all automobilists who have taken this trip. On no part of the North American Continent is there such an ever-changing panorama of wonderful scenery, pastoral scenes, fruit orchards, snowcapped mountains, huge forests, rippling streams, silvery lakes—everything that is beautiful out of doors.

Bathing Beaches The principal bathing resorts are Foul Bay (street car), Cadboro Bay (street car and half mile walk), Cordova Bay (auto and C.N.R.), Brentwood Beach (interurban and auto), Gorge City Park, B. C. Electric Park (street car), Willows (street car), and Shoal Bay (about a mile from street car).

Victoria Theatres For its size, VICTORIA is as well off as any city in Canada for the entertainment it offers residents and visitors who are in the habit of attending theatrical, vaudeville and moving picture entertainments. The Royal Victoria Theatre is one of the finest theatres in existence. It seats 1,650 people. It cost over \$400,000 and has every latest improvement.

The Pantages Theatre is another new building only opened a few years ago. It seats about 1,100 people, cost \$125,000, and is one of the most cheerful and well-appointed houses on the Coast. The Dominion Theatre exclusively a "movie" house, with a specially fine pipe organ, is also a very popular entertainment house. In addition to the above, we have the Princess Theatre, the Variety Theatre, Columbia Theatre and Romano Theatre.

SPORTS AND RECREATION

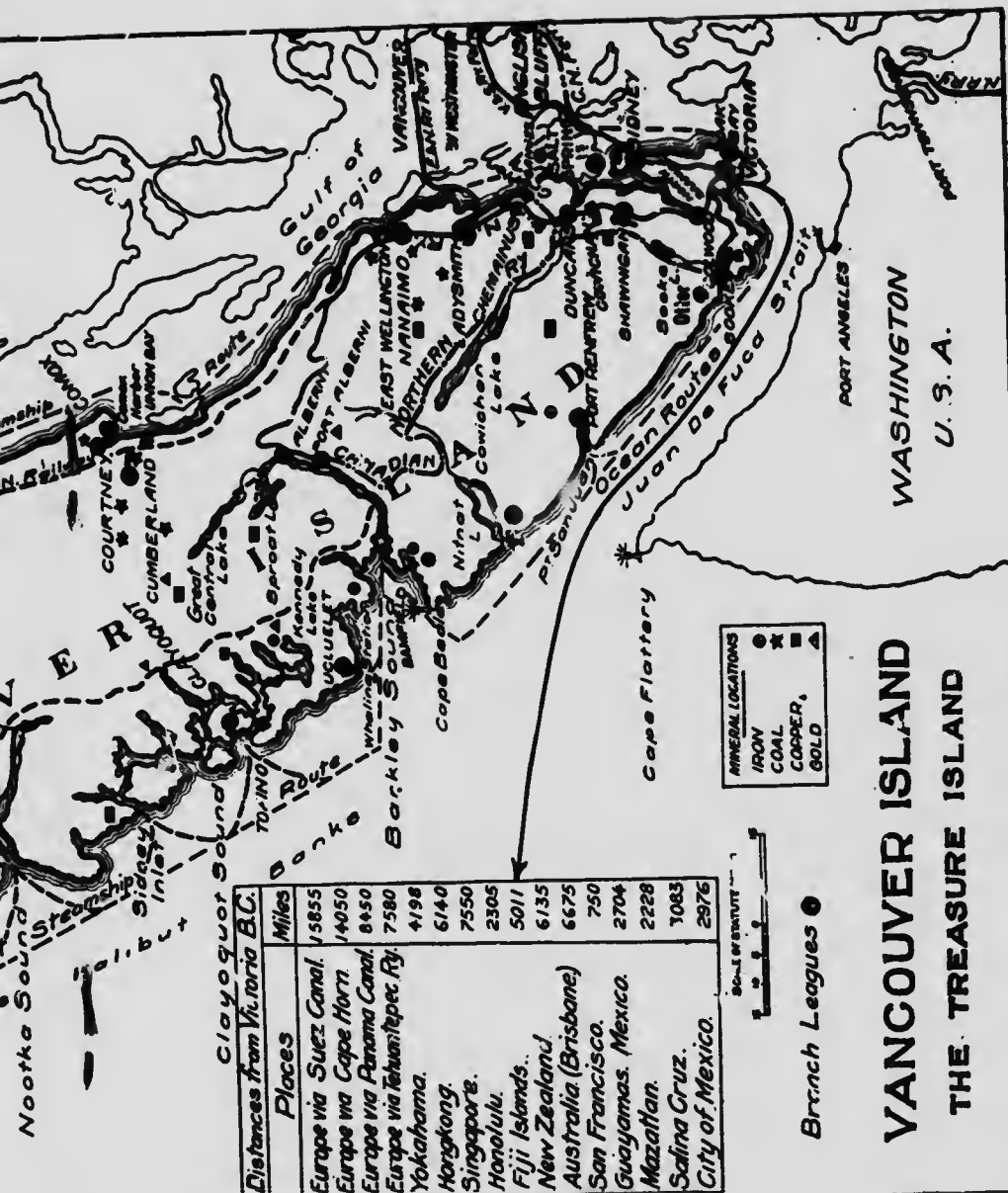
You cannot name a city in the world which begins to compare with Victoria for its out-of-door variety and appeal to lovers of the open. Men and women travel thousands of miles to secure one or another form of outdoor recreation. Here, in Victoria, it is possible to combine



View on the Beautiful Malahat Drive

nearly every known form of outdoor exercise and recreation and under climatic conditions which are incomparable.

The golf player will find in Victoria, links verging on the sea, which rival those in any part of the world. He can indulge in his favorite sport twelve months out of the year without any discomfort, and at least ten months out of the twelve under ideal conditions.



Distances from Victoria B.C.	
Places	Miles
Europe via Suez Canal.	15855
Europe via Cape Horn	14050
Europe via Panama Canal.	8450
Europe via Tehuantepec Ry.	7580
Yokohama.	4198
Hongkong.	6140
Singapore.	7550
Honolulu.	2305
Fiji Islands.	5011
New Zealand.	6135
Australia (Brisbane)	6675
San Francisco.	750
Guayamas, Mexico.	2704
Mazatlan.	2228
Safina Cruz.	1083
City of Mexico.	2976

MINERAL LOCATIONS

- IRON
- COAL
- COPPER
- ▲ GOLD



Branch Leagues ●

VANCOUVER ISLAND

THE TREASURE ISLAND

WASHINGTON
U. S. A.

Cricket, tennis, football, Government rifle range shooting, hockey, lacrosse, baseball, bowling on the green, motor-boating, yatching, canoeing, trap-shooting, riding, driving, bicycling, sea-bathing and sailing are among the sports and pastimes followed during the year; there is not a month in which sport of various kinds is not available.

The recent palatial ice rink for artificial ice skating has added the last touch, and visitors and citizens can now enjoy this fascinating exercise, or attend the ice hockey matches, while the fall roses or the spring daffodils are blooming.

The opportunities for fishing and shooting near Victoria are not only unsurpassed, but for general and varied outdoor recreation the Capital City has absolutely no equal on either continent. This doubtless seems exaggerated, but it is literally true.

OTHER POINTS OF INTEREST

Victoria's Fine Meteorological Observatory Visitors interested in weather observation or seismological research should certainly give themselves a treat by visiting the splendid Meteorological Observatory on Gonzales Hill (Foul Bay street car, No. 6, to end of line). The snow-white observatory building was built in 1914 and is modern in every respect. It is meteorological headquarters for the Province of British Columbia, the director, Mr. F. Napier Denison, a seismologist of well-known ability, presiding over the work of 140 meteorological stations as well as noting and studying earthquakes. The view of the city from the Meteorological Observatory is, alone, worth the trip.

The Provincial Museum The Provincial Museum is located in the eastern block of the Parliament Buildings, and is established for a three-fold object, as defined by its incorporating act—for natural history, for anthropology, and the natural sciences, giving information elucidating those two phases of the life of the Province.

The collection of the big game animals of British Columbia has been admired by naturalists of international



Part of the Beach at Cordova Bay

reputation, and received warm praise from the late ex-President Roosevelt on his last visit. The ethnological collection is noteworthy, leading anthropologists having united to supply specimens of the aboriginal life of the Province. Visitors are cordially invited to view same.

The Director, F. Kermode, is himself a well known big game hunter, as well as naturalist.

The Mineral Museum In the old legislative buildings, entrance on Superior Street, between Government and Menzies Streets, is located a collection of the ores and other mineral exhibits of the Province. This is in charge of officers of the Bureau of Mines, and may be seen daily during regular office hours.

Parliament Buildings open from 9 a.m. to 5 p.m.



Fishing on the Cowichan River

The Connaught Library The magnificent new home of the Provincial Library has a separate public entrance from Government Street, opposite Elliot Street. A remarkable collection of early historical documents dealing with the exploration of the Pacific Northwest is the feature of this library, which is in charge of E. O. S. Schofield, Librarian and Archivist.

Bazan Bay Farm The Dominion Experimental Station on the Saanich branch of the B. C. Electric Railway (station on property) was founded in 1912, and is one of the four in British Columbia. It is designed to test out plants, and certain classes of stock farming, suitable for Vancouver Island. Special atten-



Interior of the Provincial Museum

tion is being given to chicken farming on account of its suitability to the Island. A valuable arboretum is being assembled. Professor Lionel Stevenson is in charge.

SHORT EXCURSIONS BY RAIL AND SEA

To Goldstream, Shawnigan Lake, Duncan, Cowichan Lake, Nanaimo, Parksville, Alberni and Courtenay. Per

Esquimalt and Nanaimo Railway daily. For fares, etc., enquire at C. P. R. Ticket Office, Government and Fort Streets.

Call at Information Bureau for cards of introduction.

Beautiful One-Day Trip cruising the inland waters of the Gulf Islands. C. P. R. steamer Island Princess leaves Wednesday and Saturday at 8 a.m., returns 8 p.m. Round trip, \$2.50.

HISTORICAL

VICTORIA CITY was founded by Sir James Douglas, afterwards second Governor of Vancouver Island, and first Governor of British Columbia, in 1843 as a Hudson's Bay Company's fort.

Until the surrender of the manorial rights by the British Government in 1857, settlement of the Island was confined to the employees of the Hudson's Bay Company. The Fraser River gold excitement brought thousands to the colony in 1858, from which time general development began. The City was incorporated in 1862.

Few remains of the Hudson's Bay Company's tenure continue. Craigflower house and school, however, date from this period. The fort occupied the area bounded by Fort, Government and Bastion Streets, down to the waterfront.

INDUSTRIAL

VICTORIA is destined to be a large shipping port, being the first and last port of call for liners plying to and from the Orient, and via the Panama Canal.

Shipbuilding is one of the most active industries in Victoria, large contracts having recently been undertaken, which will keep the yards busy for several years to come. Articles manufactured in Victoria include Barrels, Cooperage Stock, Soap, Jam, Pickles, Biscuits, Beer, Mineral Waters, Cereals, Rice, Mattresses, Gloves, Rubber Roofing, Paint, Coffee, Tea, etc.



Shipbuilding on the Inner Harbor

Industries that could be advantageously established include an Iron Smelter, Woollen Mills, Furniture and Toy Factory, Seed Growing, Steel Plant, and a Moving Picture industry. For those interested in developing natural resources, Vancouver Island offers many attractions, chief among them being Timber, Fisheries, Mineral Deposits (Coal, Iron, Gold, Copper) and Agriculture.

STEAMSHIP SCHEDULES HANDY TO KNOW

Canadian Pacific Railway Steamship Service Sailings from C. P. R. Dock

To Vancouver, daily, 2.30 and 11.45 p.m.

To Seattle daily, 4.30 p.m.

To Quatsino, Port Alice and way ports, 1st, 10th and 20th of each month, at 11 p.m.



View on the Island Highway, near Courtenay

To Ganges, Monday, Wednesday and Saturday, 8 a.m.

To Prince Rupert, Juneau and Skagway on the 4th, 13th and 27th of June, and every seven days during July and August.

To Gulf Islands, every Wednesday and Saturday, 8 a.m.

Grand Trunk Pacific Steamship Service

Sailings from G. T. P. Dock

To Seattle, Sundays and Wednesdays, at 10 a.m.

To Ocean Falls, Swanson Bay, Prince Rupert and
Anyox, Sundays and Wednesdays, at 10 a.m.



The Inner Harbor

To Stewart, 10 a.m. Wednesday, May 14th, and every
second Wednesday thereafter.

To Massett, Port Clements and Buckley Bay, Sundays,
10 a.m.

To Southern Queen Charlotte Islands ports, weekly
service (sailings on application).

Steamers connect at Prince Rupert with Grand Trunk
Pacific trains for all Eastern destinations.

CITY STREET CAR ROUTES

Time of First and Last Cars to and From City. Destination Signs. Frequency of Service.

Route and Car Sign No.	First Car from City	Last Car from City	First Car from Terminus	Last Car from Terminus	Service in Minutes	By Way of
1 Oak Bay	5.52 a.m.	11.45 p.m.	6.10 a.m.	12.04 m.n.	7 ½	Fort Street and Oak Bay Ave.
2 Outer Wharf	6.10 a.m.	11.46 p.m.	6.19 a.m.	11.55 p.m.	12	Government and Superior Sts.
3 Cloverdale	6.16 a.m.	11.40 p.m.	6.25 a.m.	11.49 p.m.	12	Government Street
3 Beacon Hill	6.16 a.m.	11.40 p.m.	6.25 a.m.	11.49 p.m.	12	Menzies and Niagara Sts.
3 Fernwood	6.10 a.m.	11.46 p.m.	6.19 a.m.	11.55 p.m.	12	Pandora Street
4 Esquimalt	5.48 a.m.	11.48 p.m.	6.12 a.m.	12.12 m.n.	12	Esquimalt Rd., Victoria W.
5 Gorge	5.54 a.m.	11.42 p.m.	6.12 a.m.	12.00 m.n.	12	Craigflower Rd., Victoria W.
6 Foul Bay	5.52 a.m.	11.42 p.m.	6.12 a.m.	12.02 m.n.	10	Fort, Cook and May Sts.
7 Hillside	6.04 a.m.	11.19 p.m.	6.16 a.m.	11.52 p.m.	12	Douglas and Hillside
8 Burnside	5.55 a.m.	11.25 p.m.	6.05 a.m.	11.35 p.m.	30	Douglas and Burnside
9 Uplands	5.56 a.m.	11.41 p.m.	6.18 a.m.	12.03 m.n.	5	Fort Street (Willows)
10 Mount Tolmie	6.15 a.m.	11.15 p.m.	6.35 a.m.	11.35 p.m.	30	Fort Street, Tolmie Road
11 Willows	7.03 a.m.	11.41 p.m.	6.11 a.m.	12.11 m.n.	15	Fort Street (Direct)

SUNDAY SCHEDULE—Cars on all routes begin three hours later and finish one hour earlier.

EXTRACT FROM SAANICH INTERURBAN TIME TABLE

STATION	Week Days Only		Sundays Only		Week Days Only		Sundays Only		Week Days Only		Daily		Week Days Only		Sundays Only		Week Days Only		Daily		
	A.M.	P.M.	A.M.	P.M.	A.M.	P.M.	A.M.	P.M.	A.M.	P.M.	A.M.	P.M.	A.M.	P.M.	A.M.	P.M.	A.M.	P.M.	A.M.	P.M.	
Victoria	7.00	7.30	8.00	8.30	10.00	10.30	11.00	11.30	3.30	4.30	4.30	5.30	5.30	7.30	7.30	8.30	8.30	10.20	10.20	10.20	10.20
Observatory	7.27	7.57	8.27	8.57	10.27	10.57	11.27	11.57	3.49	4.57	4.57	5.57	5.57	7.57	7.57	8.57	8.57	10.43	10.43	10.43	10.43
Brentwood	7.39	8.09	8.39	9.09	10.39	11.09	11.39	2.09	3.58	5.09	5.09	6.09	6.09	8.09	8.09	9.09	9.09	10.52	10.52	10.52	10.52
Experimental Farm	8.26	8.55	11.26	11.55
Deep Bay	8.45	9.15	11.45	2.45
Deep Bay	A.M.	A.M.	A.M.	A.M.	A.M.	A.M.	A.M.	P.M.	P.M.	P.M.	P.M.	P.M.	P.M.	P.M.	P.M.	P.M.	P.M.	P.M.	P.M.	P.M.	P.M.
Experimental Farm	9.00	9.30	9.49	10.06	11.06	11.18	12.00	3.00	4.08	5.36	6.36	6.36	6.36	8.18	8.18	9.18	9.18	10.48	10.48	10.48	10.48
Brentwood	8.06	8.36	9.06	9.36	10.06	10.36	11.06	12.36	3.36	4.47	5.48	6.48	6.48	8.45	8.45	9.45	9.45	10.15	10.15	10.15	10.15
Observatory	8.18	8.48	9.18	9.48	10.18	10.48	11.18	12.48	3.49	4.40	5.48	6.48	6.48	8.45	8.45	9.45	9.45	10.15	10.15	10.15	10.15
Victoria	8.45	9.15	9.45	10.15	10.45	11.15	11.45	2.45	3.49	4.40	5.48	6.48	6.48	8.45	8.45	9.45	9.45	10.15	10.15	10.15	10.15

**CANADIAN NATIONAL RAILWAYS
PATRICIA BAY LINE**

No. 3 Mixed Sunday only	No. 1 Mixed Daily ex. Sun	STATIONS	No. 2 Mixed Daily ex. Sun.	No. 4 Mixed Sunday only
1.30 p.m.	5.30 p.m.	Leave	10.05 a.m.	11.05 a.m.
1.35 p.m.	5.35 p.m.	VICTORIA	9.56 a.m.	10.56 a.m.
1.39 p.m.	5.39 p.m.	JUNCTION	9.51 a.m.	10.51 a.m.
1.44 p.m.	5.44 p.m.	QUADRA	9.46 a.m.	10.46 a.m.
1.48 p.m.	5.48 p.m.	MT. DOUGLAS	9.41 a.m.	10.41 a.m.
1.52 p.m.	5.52 p.m.	CORDOVA BAY	9.38 a.m.	10.38 a.m.
1.56 p.m.	5.56 p.m.	SAYWARD	9.31 a.m.	10.31 a.m.
2.00 p.m.	6.00 p.m.	BURBIDGE	9.27 a.m.	10.27 a.m.
2.04 p.m.	6.04 p.m.	MARTINDALE	9.24 a.m.	10.24 a.m.
2.09 p.m.	6.09 p.m.	MICHELL	9.18 a.m.	10.18 a.m.
2.12 p.m.	6.12 p.m.	SCOTT	9.13 a.m.	10.13 a.m.
2.17 p.m.	6.17 p.m.	BAZAN	9.08 a.m.	10.08 a.m.
2.22 p.m.	6.22 p.m.	EAST ROAD	9.05 a.m.	10.05 a.m.
2.30 p.m.	6.30 p.m.	RANGE ROAD	9.00 a.m.	10.00 a.m.
		Arrive.....		
		PATRICIA BAY		
		Leave		

ESQUIMALT & NANAIMO RAILWAY

Trains at 9 a.m. and 3.30 p.m. week days to Parksville Junction. Sunday trains same time, but only as far as Wellington.

Train connects at Duncan for Cowichan Lake, on Wednesdays and Saturdays, returning same day.

Train continues to Alberni Monday, Wednesday and Friday, returning Tuesday, Thursday and Saturday.

Train continues to Courtenay Tuesday, Thursday and Saturday, returning Monday, Wednesday and Friday.



Boating on the arm of the sea known as "The Gorge," Victoria,
B. C. One of the most popular forms of outdoor
recreation, possible the whole year round



Colwood Golf Course

This Booklet has been compiled for the purpose of presenting, in convenient form, to visitors, information of a general character. Any further information will be gladly supplied by the Publicity Commissioner, Victoria, B. C.

