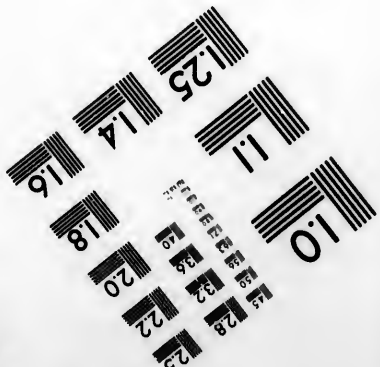
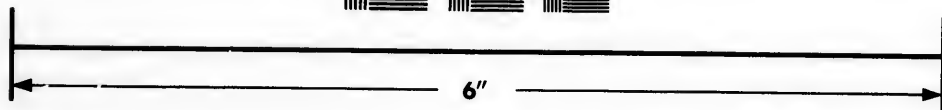
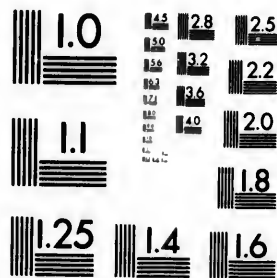


**IMAGE EVALUATION
TEST TARGET (MT-3)**



**Photographic
Sciences
Corporation**

23 WEST MAIN STREET
WEBSTER, N.Y. 14580
(716) 872-4503

**CIHM/ICMH
Microfiche
Series.**

**CIHM/ICMH
Collection de
microfiches.**



Canadian Institute for Historical Microreproductions

Institut canadien de microreproductions historiques

1980

Technical and Bibliographic Notes/Notes techniques et bibliographiques

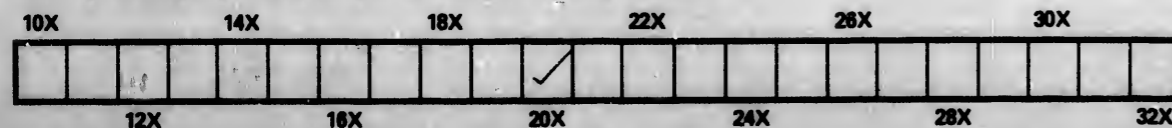
The Institute has attempted to obtain the best original copy available for filming. Features of this copy which may be bibliographically unique, which may alter any of the images in the reproduction, or which may significantly change the usual method of filming, are checked below.

L'institut a microfilmé le meilleur exemplaire qu'il lui a été possible de se procurer. Les détails de cet exemplaire qui sont peut-être uniques du point de vue bibliographique, qui peuvent modifier une image reproduite, ou qui peuvent exiger une modification dans la méthode normale de filmage sont indiqués ci-dessous.

- Coloured covers/
Couverture de couleur
- Covers damaged/
Couverture endommagée
- Covers restored and/or laminated/
Couverture restaurée et/ou pelliculée
- Cover title missing/
Le titre de couverture manque
- Coloured maps/
Cartes géographiques en couleur
- Coloured ink (i.e. other than blue or black)/
Encre de couleur (i.e. autre que bleue ou noire)
- Coloured plates and/or illustrations/
Planches et/ou illustrations en couleur
- Bound with other material/
Relié avec d'autres documents
- Tight binding may cause shadows or distortion
along interior margin/
La reliure serrée peut causer de l'ombre ou de la
distortion le long de la marge intérieure
- Blank leaves added during restoration may
appear within the text. Whenever possible, these
have been omitted from filming/
Il se peut que certaines pages blanches ajoutées
lors d'une restauration apparaissent dans le texte,
mais, lorsque cela était possible, ces pages n'ont
pas été filmées.
- Additional comments/
Commentaires supplémentaires:

- Coloured pages/
Pages de couleur
- Pages damaged/
Pages endommagées
- Pages restored and/or laminated/
Pages restaurées et/ou pelliculées
- Pages discoloured, stained or foxed/
Pages décolorées, tachetées ou piquées
- Pages detached/
Pages détachées
- Showthrough/
Transparence
- Quality of print varies/
Qualité inégale de l'impression
- Includes supplementary material/
Comprend du matériel supplémentaire
- Only edition available/
Seule édition disponible
- Pages wholly or partially obscured by errata
slips, tissues, etc., have been refilmed to
ensure the best possible image/
Les pages totalement ou partiellement
obscurcies par un feuillet d'errata, une pelure,
etc., ont été filmées à nouveau de façon à
obtenir la meilleure image possible.

This item is filmed at the reduction ratio checked below/
Ce document est filmé au taux de réduction indiqué ci-dessous.



The copy filmed here has been reproduced thanks to the generosity of:

National Library of Canada

L'exemplaire filmé fut reproduit grâce à la générosité de:

Bibliothèque nationale du Canada

The images appearing here are the best quality possible considering the condition and legibility of the original copy and in keeping with the filming contract specifications.

Les images suivantes ont été reproduites avec le plus grand soin, compte tenu de la condition et de la netteté de l'exemplaire filmé, et en conformité avec les conditions du contrat de filmage.

Original copies in printed paper covers are filmed beginning with the front cover and ending on the last page with a printed or illustrated impression, or the back cover when appropriate. All other original copies are filmed beginning on the first page with a printed or illustrated impression, and ending on the last page with a printed or illustrated impression.

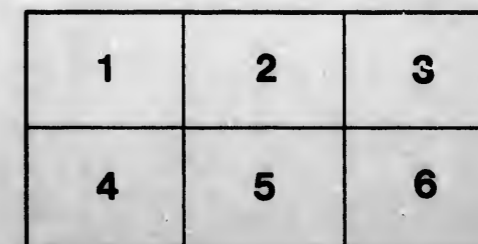
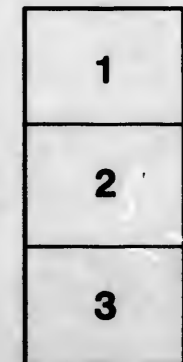
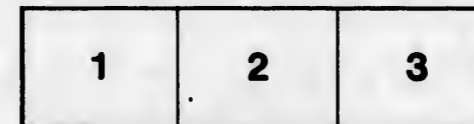
Les exemplaires originaux dont la couverture en papier est imprimée sont filmés en commençant par le premier plat et en terminant soit par la dernière page qui comporte une empreinte d'impression ou d'illustration, soit par le second plat, selon le cas. Tous les autres exemplaires originaux sont filmés en commençant par la première page qui comporte une empreinte d'impression ou d'illustration et en terminant par la dernière page qui comporte une telle empreinte.

The last recorded frame on each microfiche shall contain the symbol → (meaning "CONTINUED"), or the symbol ▼ (meaning "END"), whichever applies.

Un des symboles suivants apparaîtra sur la dernière image de chaque microfiche, selon le cas: le symbole → signifie "A SUIVRE", le symbole ▼ signifie "FIN".

Maps, plates, charts, etc., may be filmed at different reduction ratios. Those too large to be entirely included in one exposure are filmed beginning in the upper left hand corner, left to right and top to bottom, as many frames as required. The following diagrams illustrate the method:

Les cartes, planches, tableaux, etc., peuvent être filmés à des taux de réduction différents. Lorsque le document est trop grand pour être reproduit en un seul cliché, il est filmé à partir de l'angle supérieur gauche, de gauche à droite, et de haut en bas, en prenant le nombre d'images nécessaire. Les diagrammes suivants illustrent la méthode.



Can.
Pat.

*The Gravel Bay
Mining Co. of Ontario.*

THUNDER BAY DISTRICT.

THE GRAVEL BAY

MINING COMPANY OF ONTARIO

LIMITED.

Chartered, January, A. D. 1890.

THE GRAVEL BAY
Mining Company of Ontario

— LIMITED. —

Incorporated under the Laws of

✦ THE • PROVINCE • OF • ONTARIO. ✦

CAPITAL STOCK - - - - - \$100,000.

Divided into

20,000 SHARES. - - - - - PAR VALUE, \$5.00.

Officers:

HUGH WILSON, F. G. S.,	PRESIDENT.
J. J. KINGSMILL,	} DIRECTORS.
FRED'K T. SIBLEY,	
WILLIAM PERCY TORRANCE,	SECRETARY-TREAS.
MESSRS. KINGSMILL, CATTANACH & SYMONS,-	SOLICITORS.
THE UNION BANK OF CANADA,	BANKERS.

Office:

17 WELLINGTON STREET, TORONTO.

THE GRAVEL BAY
MINING COMPANY of ONTARIO.
(LIMITED).

CONTRARY to the usual habit **NO MONEY WHATEVER** will be paid by the Company for the property, as the Owners have **TAKEN STOCK IN FULL** for the Mine.

Of the money now asked for, no amount whatever will be expended except in defraying expenses actually incurred in the development and testing of the Mine, and organizing the Company.

† TITLE. †

THE TITLE IS PERFECT. The Abstracts show that the Land has been duly Patented. [All Deeds and Documents recorded] and is **NOW THE PROPERTY OF THE COMPANY.**

THE DEEDS are in the hands of the Solicitors who will furnish any information required.

LOCATION.

The property contains 79 acres, **ABSOLUTELY FREE** from incumbrances, arrears of taxes, conditions or royalties of any kind, and is located on the Gravel River, within a short distance of the waters of Neepigon Bay, and forms part of the celebrated Mineral bearing Lands of **THUNDER BAY DISTRICT**. **THE CANADIAN PACIFIC RAILWAY** runs within about six miles of the property, bringing it within easy access of Port Arthur and other business centres.

The following Extracts are taken from Reports on this Location by Prof. Chapman, Capt. John W. Plummer and Hugh Wilson, F. G. S.

E. J. CHAPMAN, Ph. D., etc., Professor of Mineralogy and Geology in University College, Toronto, and Consulting Mining Engineer, who visited this location, says :—

“In the examination of this mineral property I was accompanied by Captain John W. Plummer of Thunder Bay, (now of Montana), one of the most experienced mining captains of the region, and by the well-known Government Surveyor, Mr. Hugh Wilson, F. G. S.

SITE AND GENERAL DESCRIPTION OF THE PROPERTY.

The location lies on the west bank of White Fish River, (now Gravel River), 10 or 12 miles from the mouth of this stream, on Neepigon Bay. The distance however in a direct line from the coast is considerably less than this. The location consists altogether of about 80 acres. It rises abruptly into a bold, rocky escarpment of about 500 feet in height. The northern portion of the location extends westward to a distance of about 20 chains, or the fourth of a mile, beyond the brow of the escarpment, forming a high table-land, as yet unexplored.

MINERAL FEATURES.

The Country rock of the location consists of a Felsite belonging to the Laurentian series. On the bold escarpment facing the river the rock is well exposed. On the northern portion this escarpment is traversed by three well-defined veins, one of which throws out a broad string or feeder, forming practically a fourth vein. These veins have a nearly vertical position, with east and west course. At the summit of the escarpment they present an average thickness of 10 or 12 inches only, but widen considerably as they descend, the vein No. 2 being upward of 20 feet in width at the base of the escarpment. In their upper portions these veins are made up chiefly of a quartz gangue (slightly amethystine in places) mixed with small amounts of calcite and heavy spar, carrying galena in scattered bunches and crystals; but at their lower part, the veinstone consists almost entirely of crystalline calcite. Vein No. 4 has been much decomposed and worn away, both at the base and for some distance up the face of the cliff, and a deep gully or narrow ravine has thus resulted. **In their continued expansion to a depth of at least 500 feet from their surface outcrop, these veins give promise of lasting strength, and warrant a more complete exploration.** At present they are entirely undeveloped and the cross sections, as exposed on the face of the cliff, can scarcely be regarded as affording a true insight into the average quality of the veins.

Calculations, at present, as to their probable yield, would be simply wronging the veins, the data being altogether insufficient for the purpose. A short adit might be driven into the exposed base of vein No. 2 at comparatively little expense, and stopeing might then immediately be commenced. In this manner a fair insight into the probable yield of the veins would be rapidly arrived at.

THE REDUCED LEAD OBTAINED FROM THE ORE WAS OF VERY PURE AND GOOD QUALITY. In addition to the ore now visible, the veins contain, here and there, large vugs or cavities, from which considerable amounts of crystallized galena (as shown by the impressions on the walls) have evidently been extracted.

CAPT. PLUMMER in his report, bearing date, 10th Feb'y, 1890, says:— The facilities for examining the property are very limited. It presents however sufficiently encouraging features to warrant a test being made, the chief being

FIRST — The widening of the veins in their lower portions and the consequent increase of their ore contents.

SECOND — The probable convergence of the veins as they go Westward.

If the veins unite in length it can be reasonably expected that good results will follow, the amounts of galena will be augmented and its silver value considerably increased. The position of the veins where exposed is admirably adapted for making a test and doing it cheaply. An adit tunnel driven into the base of the hill on the centre vein of the group, and cross-cutting to the vein on either side, will readily prove their value as they stand individually and also demonstrate the point at which their divergence ceases.

There is another vein some distance northward of the above veins, which possesses the same characteristics.

The fact of these veins being in an unexplored territory, their accessibility and the comparative cheapness of the test necessary to prove their value makes it a matter of interest to Capitalists.

I enclose sketch showing the style of development I would suggest.

HUGH WILSON, F. G. S., President of the Company, who surveyed the location and has twice visited it since, says:—

I commenced blasting on vein No. 2, and worked down to where No. 3 diverges from No. 2, and exposed the Mineral portion of the vein, &c., &c. I have no hesitation in saying that crystals of native silver exist on foot wall of the location. The veins have the best prospects for silver of any mineral vein I have seen in the last 20 years on the North Shore of Lake Superior and I have seen them all except the last 2 or 3 years find.

I am confident, says Mr. Wilson, that with One Thousand pounds expended the property will prove a bonanza.

PROPOSAL.

The original Owners having received 9000 SHARES for the property, 1100 SHARES ARE LEFT IN THE TREASURY OF THE COMPANY, of which the Directors have determined by By-law, confirmed by the Shareholders, to offer a limited number, namely **3000**, for sale at TWO DOLLARS, (8/4 STERLING) PER SHARE, when that number has been sold, the sum realized, or so much thereof as may be found necessary, will be expended in defraying the expenses of testing the property and securing under the direction of able Mining Engineers a reliable report thereon, which report will be laid before the Shareholders who can then at a General Meeting decide upon the price at which the REMAINING 8000 SHARES shall be disposed of, whether the Capital Stock should be increased, and upon what terms the mine should be worked.

No Officer will receive any Salary out of the \$6000 so subscribed, and no office rent or other expenses will be paid except those actually incurred in the developement and testing of the Location and organizing the Company.

APPLICATION FOR STOCK (see next page), may be made to William Percy Torrance, Secretary-Treasurer, at the Office of the Solicitors of the Company

Messrs. KINGSMILL, CATTANACH & SYMONS,

17 WELLINGTON ST.

TORONTO, Ontario.

To the Directors of the Gravel Bay Mining Company of Ontario.

(LIMITED).

GENTLEMEN :—

*Please allot me Shares
in this Company, in full payment for which, accord-
ing to the terms of Prospectus, I herewith remit by
.....the sum of.....*

.....(SIGNATURE.)

.....(ADDRESS.)

APPPLICATION for Shares may be addressed in the following form and accompanied by Bill of Exchange, Bank Draft or Certified Cheque to the Secretary-Treasurer at the Company's Office, 17 Wellington Street, Toronto, Ontario.

*To the Directors of the Gravel Bay Mining Company of Ontario.
(LIMITED).*

GENTLEMEN :—

*Please allot me Shares
in this Company, in full payment for which, according
to the terms of Prospectus, I herewith remit by
.....the sum of.....*

.....(SIGNATURE.)

.....(ADDRESS.)

