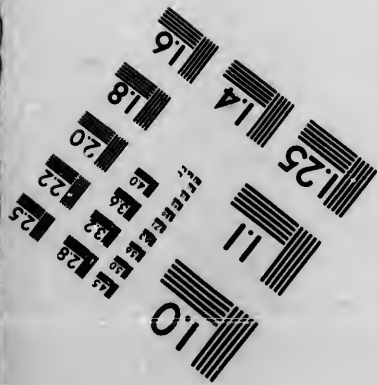
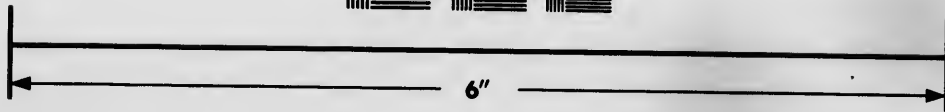
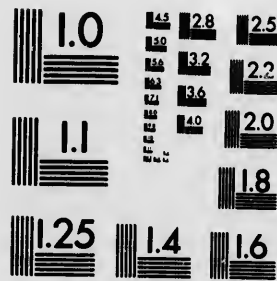


**IMAGE EVALUATION
TEST TARGET (MT-3)**



**Photographic
Sciences
Corporation**

23 WEST MAIN STREET
WEBSTER, N.Y. 14580
(716) 872-4503

**CIHM
Microfiche
Series
(Monographs)**

**ICMH
Collection de
microfiches
(monographies)**



Canadian Institute for Historical Microreproductions / Institut canadien de microreproductions historiques

© 1993

Technical and Bibliographic Notes / Notes techniques et bibliographiques

The Institute has attempted to obtain the best original copy available for filming. Features of this copy which may be bibliographically unique, which may alter any of the images in the reproduction, or which may significantly change the usual method of filming, are checked below.

L'Institut a microfilmé le meilleur exemplaire qu'il lui a été possible de se procurer. Les détails de cet exemplaire qui sont peut-être uniques du point de vue bibliographique, qui peuvent modifier une image reproduite, ou qui peuvent exiger une modification dans la méthode normale de filmage sont indiqués ci-dessous.

- Coloured covers/
Couverture de couleur
- Covers damaged/
Couverture endommagée
- Covers restored and/or laminated/
Couverture restaurée et/ou pelliculée
- Cover title missing/
Le titre de couverture manque
- Coloured maps/
Cartes géographiques en couleur
- Coloured ink (i.e. other than blue or black)/
Encre de couleur (i.e. autre que bleue ou noire)
- Coloured plates and/or illustrations/
Planches et/ou illustrations en couleur
- Bound with other material/
Relié avec d'autres documents
- Tight binding may cause shadows or distortion
along interior margin/
La reliure serrée peut causer de l'ombre ou de la
distorsion le long de la marge intérieure
- Blank leaves added during restoration may appear
within the text. Whenever possible, these have
been omitted from filming/
Il se peut que certaines pages blanches ajoutées
lors d'une restauration apparaissent dans le texte,
mais, lorsque cela était possible, ces pages n'ont
pas été filmées.

- Coloured pages/
Pages de couleur
- Pages damaged/
Pages endommagées
- Pages restored and/or laminated/
Pages restaurées et/ou pelliculées
- Pages discoloured, stained or foxed/
Pages décolorées, tachetées ou piquées
- Pages detached/
Pages détachées
- Showthrough/
Transparence
- Quality of print varies/
Qualité inégale de l'impression
- Continuous pagination/
Pagination continue
- Includes index(es)/
Comprend un (des) index

Title on header taken from: /
Le titre de l'en-tête provient:

- Title page of issue/
Page de titre de la livraison
- Caption of issue/
Titre de départ de la livraison
- Masthead/
Générique (périodiques) de la livraison

- Additional comments: /
Commentaires supplémentaires:

This item is filmed at the reduction ratio checked below /
Ce document est filmé au taux de réduction indiqué ci-dessous.

10X	12X	14X	16X	18X	20X	22X	24X	26X	28X	30X	32X
<input type="checkbox"/>	<input type="checkbox"/>	<input type="checkbox"/>	<input type="checkbox"/>	<input type="checkbox"/>	<input type="checkbox"/>	<input checked="" type="checkbox"/>	<input type="checkbox"/>	<input type="checkbox"/>	<input type="checkbox"/>	<input type="checkbox"/>	<input type="checkbox"/>

The copy filmed here has been reproduced thanks to the generosity of:

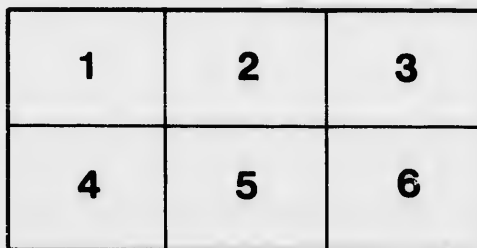
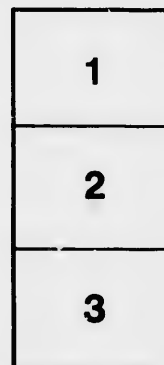
Douglas Library
Queen's University

The images appearing here are the best quality possible considering the condition and legibility of the original copy and in keeping with the filming contract specifications.

Original copies in printed paper covers are filmed beginning with the front cover and ending on the last page with a printed or illustrated impression, or the back cover when appropriate. All other original copies are filmed beginning on the first page with a printed or illustrated impression, and ending on the last page with a printed or illustrated impression.

The last recorded frame on each microfiche shall contain the symbol \rightarrow (meaning "CONTINUED"), or the symbol ∇ (meaning "END"), whichever applies.

Maps, plates, charts, etc., may be filmed at different reduction ratios. Those too large to be entirely included in one exposure are filmed beginning in the upper left hand corner, left to right and top to bottom, as many frames as required. The following diagrams illustrate the method:



L'exemplaire filmé fut reproduit grâce à la générosité de:

Douglas Library
Queen's University

Les images suivantes ont été reproduites avec le plus grand soin, compte tenu de la condition et de la netteté de l'exemplaire filmé, et en conformité avec les conditions du contrat de filmage.

Les exemplaires originaux dont la couverture en papier est imprimée sont filmés en commençant par le premier plat et en terminant soit par la dernière page qui comporte une empreinte d'impression ou d'illustration, soit par le second plat, selon le cas. Tous les autres exemplaires originaux sont filmés en commençant par la première page qui comporte une empreinte d'impression ou d'illustration et en terminant par la dernière page qui comporte une telle empreinte.

Un des symboles suivants apparaîtra sur la dernière image de chaque microfiche, selon le cas: le symbole \rightarrow signifie "A SUIVRE", le symbole ∇ signifie "FIN".

Les cartes, planches, tableaux, etc., peuvent être filmés à des taux de réduction différents. Lorsque le document est trop grand pour être reproduit en un seul cliché, il est filmé à partir de l'angle supérieur gauche, de gauche à droite, et de haut en bas, en prenant le nombre d'images nécessaire. Les diagrammes suivants illustrent la méthode.

CATALOGUE

Rowe & Erratt

HOUSEHOLD FURNITURE

AND EFFECTS

OF THE

Hon. Sir John A. Macdonald,

TO BE SOLD AT HIS RESIDENCE,

CHAPEL STREET,

MONDAY, APRIL 26th, 1875.

SALE TO COMMENCE AT 10.30 A.M.

ROWE & ERRATT

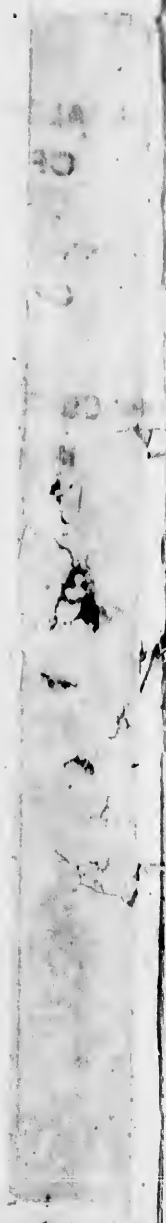
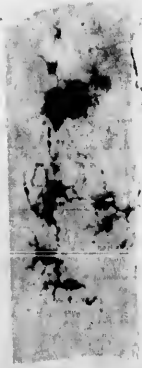
OTTAWA, April 15th. 1875.

Printed by the Citizen Printing and Publishing Company, Queen Street, Ottawa.

L
F1028 1875 M13

10

10



10

CATALOGUE.

VERANDAH.

- 1 wire Flower Stand.
- 1 large ornamental Flower Vase.

HALL.

- Hat Rack.
- 2 Cane Seat Chairs.
- Hall Lamp.
- Deers Head.
- 5 Mats.
- Brussels Carpet.
- Stair Carpet and Rods.

DRAWING ROOM.

- 1 B. W. oval Centre Table.
- 1 B. W. fancy Folding Table.
- 1 B. W. Book Case, studded with steel nails.
- 1 Couch in chintz spring cushion.
- 1 " " " "
- (These combined form an ottoman)
- 1 B. W. Card Table.
- 1 B. W. small Work Table.
- 1 B. W. Canterbury.
- 1 Piano stool.
- 6 B. W. crimson rep Drawing Room Chairs.
- 1 B. W. fancy Work Chair.
- 1 small Sofa.
- 1 Whatnot, black and gold.
- 1 Bracket, white and gold.
- 1 " " "
- 1 " " "
- 1 " " "
- 1 B. W. Whatnot, 5 shelves.
- 1 C. S. Folding Chair, satin wood.
- 1 work basket.

- 1 pair rich crimson rep window curtains, trimmed with fancy Grecian braid cords and tassels, complete.
- 1 " " " "
- 1 " " " "
- 1 pair of rich lace curtains.
- " " "
- " " "
- 3 pair poles and rings, complete.
- 3 pair white blinds and rollers.
- 1 large fancy Folding Chair.
- 1 large satin wood Folding Chair.
- Rich Brussell's Carpet, white ground.
- Carpet Linen for dancing.
- 1 Work Box.
- 1 set Drawing Room Croquet.
- 3 small B. W. Brackets.
- 1 pair Figures (Darby and Joan.)
- 2 Hand Vases.
- 2 Imperial Blue Jardineers.
- 1 Blower Stand.
- 1 embroidered crimson cloth Piano Cover.
- 1 crimson embroidered- Table Cover.
- 1 ditto, green.
- 1 Turquoise - Blue Beetle Vase, choice Minton Ware.
- 1 small stand Artificial Flowers.
- 1 Writing Table, Set, brass-bound.
- " " ornolu, in leather case, with candlesticks.
- 1 pair Java Canvass Flowered Hand Screens.

- 1 Java Canvass worked Flower Stand.
- 1 crimson wool Hearth Rug.
- 1 Aubusson, " "
- 1 sett Fire Irons.
- Coal Scuttle.
- Fender Stool.
- Fire Iron Holder.
- 1 wire Fire Grate.
- 4 bracket lamps, Flowered Porcelain Shades.
- 1 set blue and gold China tête a tête Tea Service.

DINING ROOM.

- 1 B. W. Side Board, marble top, rich carved back.
- 1 B. W. Dining Table, solid mahogany.
- 1 Butler's Tray and Stand.
- 1 Sleepy Hollow Arm Chair, with poles for invalid use.
- 1 child's Dining Chair.
- 10 Dining Room Oak Chairs, Maroon Morocco.
- 2 Dining Room Arm Chairs, Maroon Morocco.
- 1 Oil Painting Water Piece.
- 1 " Lands Scape.
- 1 " " "
- 1 " " "
- 4 pair Chintz Curtains, Lily of the Valley pattern, lined and trimmed cords and tassels, complete.
- 5 Window Blinds.
- 2 " " "
- 1 sett wooden Poles and Rings, complete.
- 1 statuette "Boy and Dog" glass shade.
- 1 ditto, "Girl with Flowers"
- 1 Brussels Carpet, yds.
- 1 Brussels Hearth Rug.
- 2 Door Mats.
- 1 red and black cloth table cover.
- 1 sett Fire Irons.
- Fire Iron Holder.
- 1 Blower Stand.
- Coal Scuttle.
- 1 large bronze Hanging Lamp, three burners, white porcelain shades.
- 13 Lamps, assorted sizes.
- 1 pair Bracket Lamps, Argand Burners.
- 1 large double Dinner Service, white and blue, containing 41 Dinner Plates.
- 23 Pudding Plates.
- 22 Soup Plates.
- 24 Cheese Plates.
- 1 oval Soup Tureen.
- 1 Salad Bowl and Stand.
- 4 oval Vegetable Dishes.
- 4 small Sauce Boats.
- 1 large Gravy Dish.
- 11 Side Dishes, assorted sizes.
- Breakfast Service, blue and white, containing 12 cups.
- 12 Saucers.
- 8 Plate.
- 7 Coffee Cups.
- 5 Egg Cups.
- Pepper Cannister.
- 5 large Saucers.
- 2 open Bread and Butter Dishes.
- Breakfast Service, white and green, containing 2 Bread and Butter Plates.
- 11 Saucers.
- Sugar Bowl.
- Butter Dish.
- 4 Saucers.
- 6 Coffee Cups.
- 9 Egg Cups.

Fancy Tea and Coffee Set, green and gold, very choice, containing 12 Tea Cups.

12 Saucers.

6 Coffee Cups.

Slop Basin.

Coffee Service (harlequin pattern).

7 Cups and Saucers.

1 large China Tea Cup and Saucer

Desert Service (harlequin).

8 Desert Plates.

1 high Fruit Dish.

2 low Fruit Dishes.

2 Centre Pieces Belique China.

2 real Belleek Bon Bon Holders (Dolphin pattern.)

2 small side ornaments (capsil.)

2 white Belleek Bon Bon Holders.

2 small " "

2 green Bon Bon Holders (Dolphin pattern.)

1 Vase (Fish pattern.)

2 Water Jugs.

3 " "

1 Syrup Jug.

1 Brass Kettle.

1 Tea Pot and Cream Jug.

1 double Egg Stand.

1 Mustard Mug.

Glassware.

13 cut Champagne Glasses, oval cut

13 Sherry Glasses "

9 Port Wine Glasses "

2 Long Sherry Glasses "

1 Claret Jug "

2 Tumblers. "

4 fancy Water Bottles "

4 cut mulled Wine Glasses "

7 Champagne Glasses "

8 Sherry Glasses, basket pattern.

12 Finger Glasses "

2 Trifle Glasses, with covers, basket pattern.

2 open cut glass Preserve Dishes, basket pattern.

2 oval cut glass Preserve Dishes, basket pattern.

2 small Preserve Dishes, basket pattern.

1 Quart Decanter.

2 Pint "

6 Flowered Glasses.

1 doz. Green Bohemian Santerne Glasses.

1 large Decanter.

MISCELLANEOUS.

16 Ice Plates.

2 Soda Water Glasses.

Glass Water Jug and Goblet.

3 Water Bottles, Star Pattern.

12 Tumblers "

12 Sherry "

14 Port Wine "

13 Claret Glasses "

13 Champagne "

2 large Decanters "

1 Claret Jug "

1 Water Jug "

10 Finger Glasses "

11 Liqueur " "

SILVERWARE.

1 solid silver Soup Tureen, elegant shape, ozs.

6 large Plated Dish Covers.

4 Plated Wine Consters.

2 Snuffers and Trays.

2 Electro Plated Champagne Coolers, with Flower Holders.

3 Entree Dishes and Covers, electro-plated.

1 Plated Sugar Basin.

1 Plated Fruit Stand, cut bottles.

1 large size Electro-Plated Tray.

1 small " " "

1 " " " "

- 1 pair Plated Bed-Room Candle Sticks.
- 1 pair Plated Candle Sticks.
- 1 " " "
- 1 " " "
- 1 pair branch Candle Sticks, 2 lights each.
- 1 pair Ladles.
- 2 Gravy Spoons
- 2 pair Nut Crackers.
- 6 large Table Spoons.
- 6 Desert Spoons.
- Fish Slice.
- 1 large Soup Ladle.
- 5 Egg Spoons.
- 1 pair Snuffers.
- 4 Dinner Forks.
- 15 Desert "
- 1 Pickle Fork.
- 1 doz. Dinner Knives, Ivory handles.
- 1 " " " "
- 2 Steels.
- 1 Child's Cup in Case.
- Child's Knife, Fork and Spoon in Case.
- 1 pair Carvers for Poultry.
- 1 " " Beef.

LIBRARY.

- Brussels Carpet.
- 1 Large Bronze Hanging Lamp & Burners with Porcelain Shade
- Large Oak Book-case in 2 parts.
- 2 Book Shelves with Cupboards.
- 1 Oval Oak Extension Table.
- 4 Cane Seat Chairs—Oak.
- 1 Office Revolving Arm Chair, e.s
- 2½ Pr. Cretonne Window Curtains, Poles and Rods, complete.
- 1 Open Writing Table.
- 1 Reclining Portable Invalid Couch.
- Stove and Stovepipes.

- 2 Hearth Rugs.
- 2 Door "
- 1 Large Picture containing Portraits of Delegates to Confederation Convention.
- 1 Large Steel Engraving—Sir Walter Scott.
- Map of Canada.
- 1 Steel Engraving,—Burrie Race Course.
- 1 Steel Engraving, Gen'l Wolf.
- Steel Engraving—Confederation Group.
- Prince Edward Island.
- 4 Small Gilt Oval Frames.

PANTRY.

- Pantry Table
- Lamp.
- C. S. Chair.
- Oil Cloth.

SERVANTS' HALL.

- 5 Wood Chairs.
- 1 Side Table.
- Servants' Dining Table.
- 2 Coal Skuttles.
- Bread Box.
- Step Ladder.

KITCHEN.

- 1 Large Cooking Stove, with Hot Water Aparatus.
- 1 Tin Boiler.
- 1 Metal Boiler.
- 1 Steamer.
- 5 Frying Pans.
- 2 Large Baking Pans.
- 2 Small " "
- 3 Large Saucepans.
- 3 Medium " "
- 5 Small "
- 1 Stew Pan.
- 1 Gridiron.
- 2 Pop-over Pan.

- 2 Scales and weights.
- 3 Coffee Pots.
- 2 Meat Slices.
- 1 Grater.
- 2 Egg Whips.
- 1 Ladle.
- 5 Ten Cannisters.
- 2 Smoothing Irons.
- Wood Box.
- 2 Wood Chairs.
- 3 Tin Dishes.
- 1 Strainer.
- 2 Large Pudding Shapes.
- 2 Round Iron Pots.
- 1 Kettle.
- 2 Saucepans.
- 1 Zinc Bucket.
- 1 Tin Pail.
- 1 Tin Dipper.
- 6 Trays.
- 1 Toast Fork.
- Meat Saw and 2 Choppers.
- Large Kitchen Table.
- 1 Washboard.
- 2 Chairs.
- 4 Milk Dishes.

CROCKERY.

- 6 Pudding Dishes.
- 2 Tin Dishes.
- 3 Dinner Plates.
- 3 Milk Basins.
- 15 Dinner Plates.
- 2 Turcens.
- 4 Shapes.
- 6½ Doz. Pattie Pans.
- 3 Wooden Dishes.
- 1 Potntoe Pounder.
- 2 Wooden Dishes.
- 3 Wire Covers.
- 5 Cups and Saucers.

YARD.

- 2 Iron Rakes.

- 2 Garden Hoes.
- Spade and Shovel.
- 1 Fork.
- 1 Watering Pot.
- 1 Lawn Mower.
- 1 Snow Shovel.
- 2 Setts Croquet.
- 1 Stone Roller.
- Rubber Hose—92 feet.
- Child's large Sleigh—well finished.
- 4 Wire Window Screens.
- Water Filter and Stand.
- 1 Refrigerator.
- 1 Large Ice Meat Safe.
- 1 Wash Tub.
- 1 Lot of Coal.
- 1 Lot of Coke.
- 1 Lot Shelving.
- 1 Dog Kennel.
- 1 Large Garden Seat.

HALL—SECOND FLOOR.

- Kidminster Carpet, pink and grey.
- 1. B. W. Card Table.
- 1 Pair Green Rep Curtains, Rods and Rings.
- 4 Pair Lace Curtains.
- 1 Large Stuffed Leather Invalid Chair, with Footstool.
- 1 Invalid Reading Desk.

BEDROOM No. 1.

- 1 Oak Bedstead.
- 1 Spring Bed.
- 1 Hair Mattrass, Pillows and Bolsters.
- 1 Superior Double B. W. Wardrobe, made to order.
- Dressing Table.
- B. W. Wash Stand, with Drawers.
- 1 Large Mirror.
- Bedroom Set Delf, blue and white.
- Sponge Bath.
- Water Can.

Waste Water Can.
 2 Cane Seat Chairs.
 Brussels Carpet.
 Hearth Rug.
 Fire Irons.
 Fire Screens.
 Coal Scuttle.
 1 Pair China Bedroom Candlesticks, blue and gold.
 3 Pair Crottonne Curtains, window poles and rings complete.
 3 Pair Lace Curtains.
 Book Case.
 2 Brackets.
 1 Rocking Chair.

BEDROOM No. 2.

1 Bedstead, oak.
 1 Spring Bed.
 1 large Hair Mattress, Pillows and Bolster.
 1 Double Wash Stand, oak.
 1 Superior oak double Wardrobe.
 Dressing Table and Large Mirror, made to order.
 1 Oval Oak Table, with drawer.
 2 Cane Seated Chairs, oak.
 1 Pair Blankets.
 1 Set Bedroom Delf.
 1 Set Chintz Window Curtains, poles and rings.
 1 Pair Lace Curtains.
 Stove and Pipes.
 1 Commode.
 1 Kidminster Carpet, pink & grey
 1 Tin Bath.
 Water Can.
 1 Kettle.

BEDROOM No. 3.

1 Iron Bedstead.
 1 Straw Mattress.
 1 Pillow.
 1 Chest of Drawers.
 1 Enclosed Wash Stand.

Carpet,
 Red Rep Window Curtains, pole and rings complete.
 1 Chair.

NURSERY.

1 Child's Cot, with rockers, mattress and pillows complete.
 1 B. W. Double Bedstead.
 1 Spring Bed.
 1 Hair Mattress.
 Pillows.
 1 Iron Crib.
 Hair Mattress.
 Feather Bed.
 1 Pair Blankets.
 1 B. W. Table.
 1 Large Mirror, oak Frame.
 1 Table.
 Child's Bath.
 Large Chest of Drawers.
 1 Cane Seated Chair.
 Rocking Chair.
 3 Small Chairs.
 1 Folding Clothes Drier.
 1 pair Chintz Curtains, pole and rings.
 Stove and Pipes, and Kettle.
 Carpet.
 1 Oil Painting, Boy and Dog.
 1 Foot Bath.
 Waste Water Can and Jug.
 2 Sets Bedroom Delf.
 1 Pair Lace Curtains.
 Clothes Basket.
 Wall Basket.

BACK HALL.

Woodbox.
 Oil Cloth.

DRESSING ROOM.

Sewing Machine.
 2 Chests of Drawers.
 1 Enclosed Wash Stand.

1 Set Doll.
 1 Hip Bath.
 1 Commode.
 1 Folding Table
 Water Can
 Stove and Pipes.
 1 Wardrobe, small.
 1 B. W. Cane Seated Chair.
 Carpet.

SERVANT'S BEDROOM.

1 Single Bedstead.
 1 Straw and Hair Mattress.
 Pillows.
 Dressing Table and Glass.
 Chest of Drawers.
 Wash Stand.
 2 Sets Bedroom Delf.
 2 Cane Seated Chairs.
 3 Rugs.
 1 Lamp.

SERVANT'S BEDROOM No. 2.

1 Single Bedstead.
 Straw Mattress.
 Bolster and Pillow.
 Chest of Drawers and Glass.
 Double Wash Stand.
 1 Set Bedroom Delf.
 Folding Towl Rack.
 1 Cane Seated Chair.

1 Lamp.
 Small Oak Side Table.

ATTIC HALL

Stove and Pipes.
 Clothes Basket.
 Linen Press.

SERVANT'S BEDROOM No. 3.

Bedstead.
 Hair and Spring Mattress.
 1 B. W. Towel Rack.
 Pillow and Bolster.
 1 Pair Blankets.
 1 Chest of Drawers.
 Wash Stand.
 Bedroom Delf.
 1 Small Table.
 Chair.

LARDER

1 Zinc Meat Safe.
 5 Large Earthen Crocks.
 6 Large Iron Crocks.
 11 Jars.
 6 Glass Preserve Bottles.
 1 Pastry Board and Rolling Pin.
 Flour Barrel.
 2 Chopping Boxes.
 1 Long Bench.
 4 Baskets.

