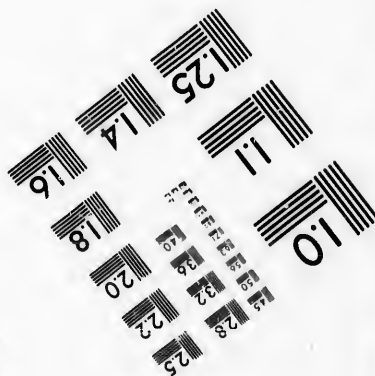
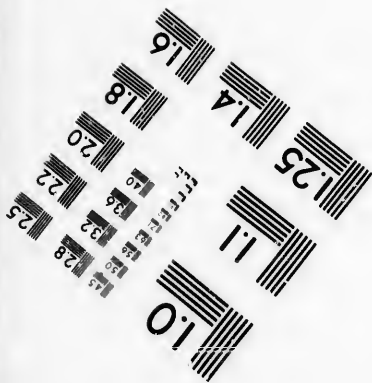
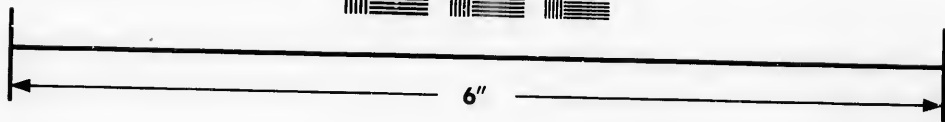
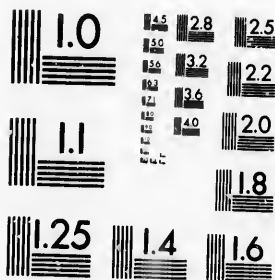


**IMAGE EVALUATION  
TEST TARGET (MT-3)**



**Photographic  
Sciences  
Corporation**

23 WEST MAIN STREET  
WEBSTER, N.Y. 14580  
(716) 872-4503

0  
1  
2  
3  
4  
5  
6  
7  
8  
9  
10  
11  
12  
13  
14  
15  
16  
17  
18  
19  
20  
21  
22  
23  
24  
25  
26  
27  
28  
29  
30  
31  
32  
33  
34  
35  
36  
37  
38  
39  
40  
41  
42  
43  
44  
45  
46  
47  
48  
49  
50  
51  
52  
53  
54  
55  
56  
57  
58  
59  
60  
61  
62  
63  
64  
65  
66  
67  
68  
69  
70  
71  
72  
73  
74  
75  
76  
77  
78  
79  
80  
81  
82  
83  
84  
85  
86  
87  
88  
89  
90  
91  
92  
93  
94  
95  
96  
97  
98  
99

**CIHM/ICMH  
Microfiche  
Series.**

**CIHM/ICMH  
Collection de  
microfiches.**



Canadian Institute for Historical Microreproductions / Institut canadien de microreproductions historiques

**© 1986**

11  
12  
13  
14  
15  
16  
17  
18  
19  
20  
21  
22  
23  
24  
25  
26  
27  
28  
29  
30  
31  
32  
33  
34  
35  
36  
37  
38  
39  
40  
41  
42  
43  
44  
45  
46  
47  
48  
49  
50  
51  
52  
53  
54  
55  
56  
57  
58  
59  
60  
61  
62  
63  
64  
65  
66  
67  
68  
69  
70  
71  
72  
73  
74  
75  
76  
77  
78  
79  
80  
81  
82  
83  
84  
85  
86  
87  
88  
89  
90  
91  
92  
93  
94  
95  
96  
97  
98  
99

Technical and Bibliographic Notes/Notes techniques et bibliographiques

The Institute has attempted to obtain the best original copy available for filming. Features of this copy which may be bibliographically unique, which may alter any of the images in the reproduction, or which may significantly change the usual method of filming, are checked below.

L'Institut a microfilmé le meilleur exemplaire qu'il lui a été possible de se procurer. Les détails de cet exemplaire qui sont peut-être uniques du point de vue bibliographique, qui peuvent modifier une image reproduite, ou qui peuvent exiger une modification dans la méthode normale de filmage sont indiqués ci-dessous.

- |  |  |
|--|--|
| <input type="checkbox"/> Coloured covers/<br>Couverture de couleur   | <input type="checkbox"/> Coloured pages/<br>Pages de couleur   |
| <input type="checkbox"/> Covers damaged/<br>Couverture endommagée  | <input type="checkbox"/> Pages damaged/<br>Pages endommagées   |
| <input type="checkbox"/> Covers restored and/or laminated/<br>Couverture restaurée et/ou pelliculée  | <input type="checkbox"/> Pages restored and/or laminated/<br>Pages restaurées et/ou pelliculées  |
| <input type="checkbox"/> Cover title missing/<br>Le titre de couverture manque   | <input checked="" type="checkbox"/> Pages discoloured, stained or foxed/<br>Pages décolorées, tachetées ou piquées   |
| <input type="checkbox"/> Coloured maps/<br>Cartes géographiques en couleur   | <input type="checkbox"/> Pages detached/<br>Pages détachées  |
| <input type="checkbox"/> Coloured ink (i.e. other than blue or black)/<br>Encre de couleur (i.e. autre que bleue ou noire)   | <input checked="" type="checkbox"/> Showthrough/<br>Transparence   |
| <input type="checkbox"/> Coloured plates and/or illustrations/<br>Planches et/ou illustrations en couleur  | <input type="checkbox"/> Quality of print varies/<br>Qualité inégale de l'impression   |
| <input type="checkbox"/> Bound with other material/<br>Relié avec d'autres documents   | <input type="checkbox"/> Includes supplementary material/<br>Comprend du matériel supplémentaire   |
| <input type="checkbox"/> Tight binding may cause shadows or distortion<br>along interior margin/<br>La reliure serrée peut causer de l'ombre ou de la<br>distorsion le long de la marge intérieure   | <input type="checkbox"/> Only edition available/<br>Seule édition disponible   |
| <input type="checkbox"/> Blank leaves added during restoration may<br>appear within the text. Whenever possible, these<br>have been omitted from filming/<br>Il se peut que certaines pages blanches ajoutées<br>lors d'une restauration apparaissent dans le texte,<br>mais, lorsque cela était possible, ces pages n'ont<br>pas été filmées. | <input type="checkbox"/> Pages wholly or partially obscured by errata<br>slips, tissues, etc., have been refilmed to<br>ensure the best possible image/<br>Les pages totalement ou partiellement<br>obscurcies par un feuillet d'errata, une pelure,<br>etc., ont été filmées à nouveau de façon à<br>obtenir la meilleure image possible. |
| <input checked="" type="checkbox"/> Additional comments:/ [Printed ephemera] [4] p.<br>Commentaires supplémentaires:   |  |

This item is filmed at the reduction ratio checked below/  
Ce document est filmé au taux de réduction indiqué ci-dessous.

10X	12X	14X	16X	18X	20X	22X	24X	26X	28X	30X	32X
							✓				

The copy filmed here has been reproduced thanks to the generosity of:

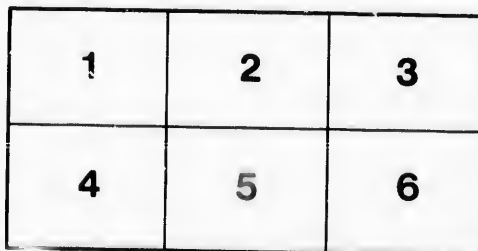
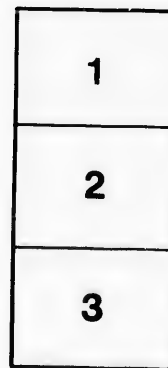
Library of the Public  
Archives of Canada

The images appearing here are the best quality possible considering the condition and legibility of the original copy and in keeping with the filming contract specifications.

Original copies in printed paper covers are filmed beginning with the front cover and ending on the last page with a printed or illustrated impression, or the back cover when appropriate. All other original copies are filmed beginning on the first page with a printed or illustrated impression, and ending on the last page with a printed or illustrated impression.

The last recorded frame on each microfiche shall contain the symbol  $\rightarrow$  (meaning "CONTINUED"), or the symbol  $\nabla$  (meaning "END"), whichever applies.

Maps, plates, charts, etc., may be filmed at different reduction ratios. Those too large to be entirely included in one exposure are filmed beginning in the upper left hand corner, left to right and top to bottom, as many frames as required. The following diagrams illustrate the method:



L'exemplaire filmé fut reproduit grâce à la générosité de:

La bibliothèque des Archives  
publiques du Canada

Les images suivantes ont été reproduites avec le plus grand soin, compte tenu de la condition et de la netteté de l'exemplaire filmé, et en conformité avec les conditions du contrat de filmage.

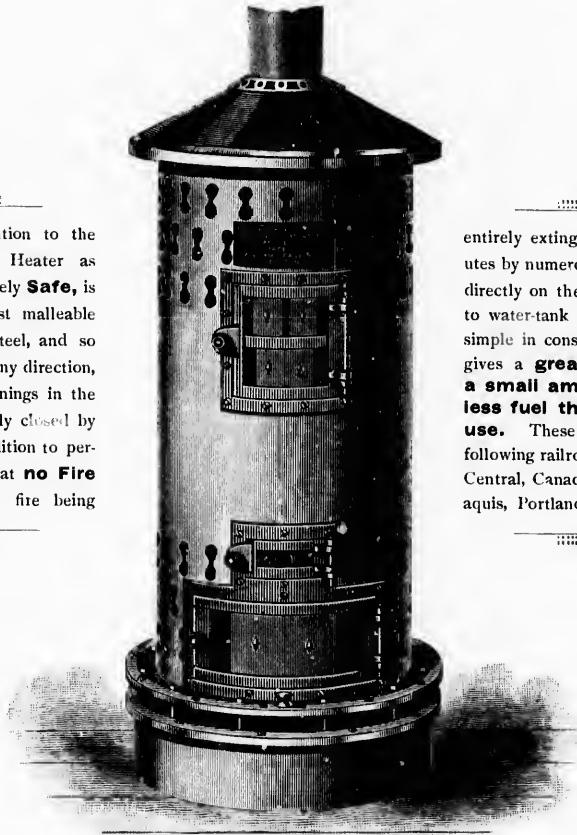
Les exemplaires originaux dont la couverture en papier est imprimée sont filmés en commençant par le premier plat et en terminant soit par la dernière page qui comporte une empreinte d'impression ou d'illustration, soit par le second plat, selon le cas. Tous les autres exemplaires originaux sont filmés en commençant par la première page qui comporte une empreinte d'impression ou d'illustration et en terminant par la dernière page qui comporte une telle empreinte.

Un des symboles suivants apparaîtra sur la dernière image de chaque microfiche, selon le cas: le symbole  $\rightarrow$  signifie "A SUIVRE", le symbole  $\nabla$  signifie "FIN".

Les cartes, planches, tableaux, etc., peuvent être filmés à des taux de réduction différents. Lorsque le document est trop grand pour être reproduit en un seul cliché, il est filmé à partir de l'angle supérieur gauche, de gauche à droite, et de haut en bas, en prenant le nombre d'images nécessaire. Les diagrammes suivants illustrent la méthode.

# THE EDWARDS PATENT \* SAFETY CAR HEATER. \*

We beg to call your attention to the Edwards Patent Safety Car Heater as shown in this cut. It is absolutely **Safe**, is constructed entirely of the best malleable Iron and finest quality blue Steel, and so arranged that if overturned in any direction, in case of accident, all the openings in the doors, funnel, etc., are completely closed by an arrangement of slides (in addition to perforated plates over same,) so that **no Fire can possibly escape**, the fire being



entirely extinguished in two or three minutes by numerous small streams of water fed directly on the coals through pipes attached to water-tank at base of heater. It is very simple in construction, easily cared for and gives a **great amount of heat with a small amount of coal, requiring less fuel than any other heater in use.** These Heaters are in use on the following railroads: Boston & Maine, Maine Central, Canadian Pacific, Bangor & Piscataquis, Portland & Rochester, and others.

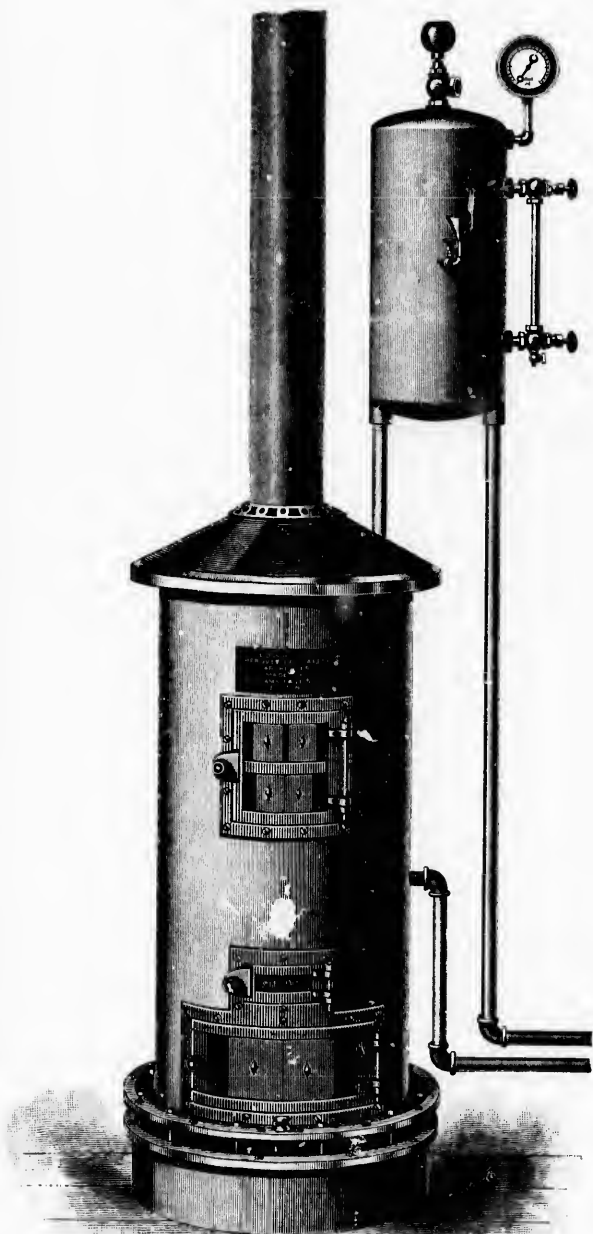
.. MANUFACTURED BY ..

## WILLIAMS, PAGE & CO.

227 to 233 Cambridge Street,

BOSTON, MASS.

# SOMETHING NEW.

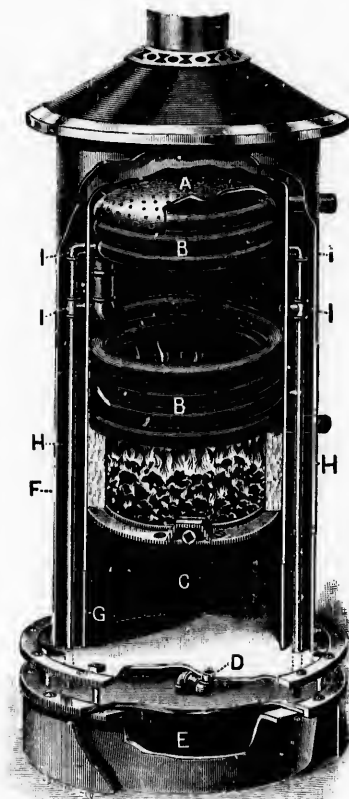


## THE EDWARDS PATENT SAFETY HOT WATER HEATER.

It is constructed the same as the Safety Car Heater, except that it is a size larger and fitted with hot water coil, etc. See sectional view.

We commenced manufacturing the Hot Water Heater this season, and those that are in use are giving perfect satisfaction, those using them being delighted with them.

See testimonials on fourth page.

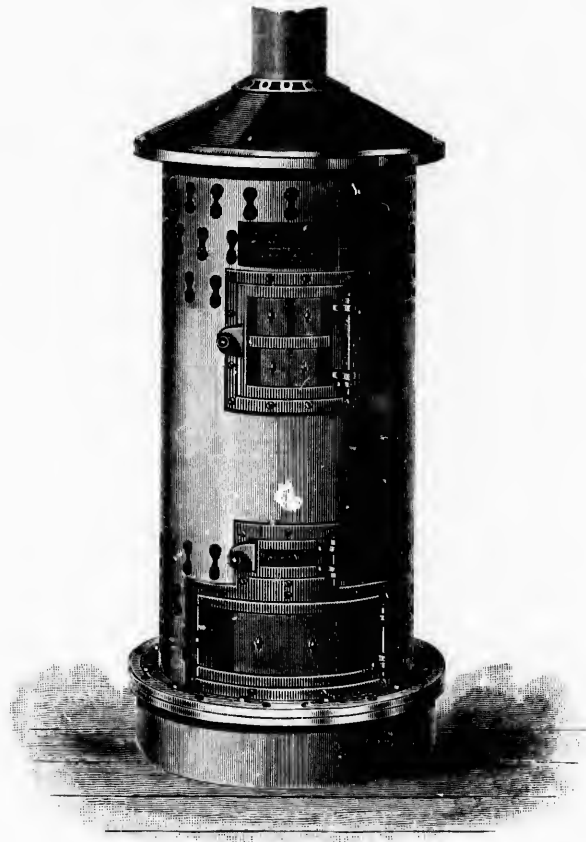


### SECTIONAL VIEW.

**A**, Perforated Steel Plate over coil, which prevents heat from escaping through funnel. **B, B**, Hot Water Coil, containing over 30 feet of  $1\frac{1}{4}$  in. pipe. **C**, Ash Pit. **D**, Filler to Safety Water Tank. **E**, Safety Water Tank. **F**, Outside Cylinder, made from No. 20 steel. **G**, Inside Cylinder, made from  $\frac{1}{8}$  in. finest quality blue steel. **H**, Water Pipes running from Tank to Fire Box. **I, I**, Water Pipes at point entering Fire Box, there are four pipes, each pipe connected with Fire Box at two points, in case of Heater being overturned, the water is fed directly on the coals in numerous small streams. Above the Perforated Steel Plate **A** there are double sliding dampers which are held back from over Funnel Hole by small lugs fastened to Funnel, diameter of Fire Box inside of coil, 15 in., extreme outside diameter of Heater over all, 24 in.

SAMPLES SENT AT OUR EXPENSE FOR TRIAL.

# THE EDWARDS PATENT AUXILIARY HEATER.



**T**HIS Heater is similar to the Safety Heater, but does not comprise *all* the Safety appliances. This is a very desirable heater to place in cars when an auxiliary heater is required in addition to steam heat, also for Baggage cars, Caboose cars, etc.

pre-  
Hot  
ipe.  
**E,**  
rom  
in.  
ing  
oint  
con-  
ater  
bals  
ated  
ich  
lugs  
coil,  
all,

PORTLAND & ROCHESTER RAILROAD.

SUPERINTENDENT'S OFFICE.

J. W. PETERS, Superintendent.

PORTLAND, Me., February 24th, 1891.

Mess. WILLIAMS, PAGE & Co.,  
Boston, Mass.

*Gentlemen:—*

I have your favor of 18th inst., enquiring in regard to the Edwards Hot Water Car Heater which we are now using in one of our passenger cars. While it has been in use but one month, it has so far given great satisfaction, and I would be pleased to have you quote price for two more of them, as we are about closing contract with the Pullman Car Co. for two new passenger cars, and I prefer using your Heater to the ones which they usually put in.

Yours truly,



Superintendent.

CONCORD & MONTREAL RAILROAD.

SUPT. M. P. & R. S. OFFICE.

J. T. GORDON, S. M. P. & R. S.

CONCORD, N. H., Feb'y 19, 1891.

Messrs. WILLIAMS, PAGE & Co.

*Gents:—*

In answer to your letter of Feb'y 18th. in regard to our experience with The Edwards Safety Hot Water Heater will say: We have one in Baggage Car No. 148 running from Boston to Montreal. The short experience we have had with it give us all the heat we need to expect. Thermometer at 12° below zero, the whole car was well warmed.

Yours truly,



Supt. M. P. & R. S.



