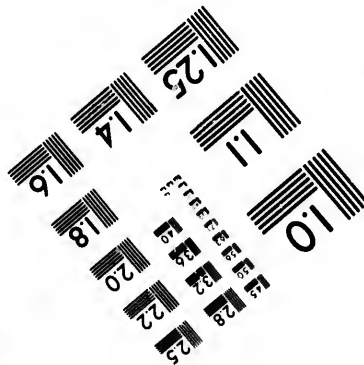
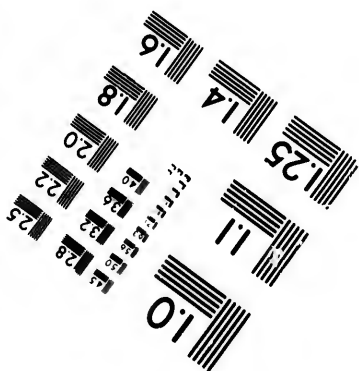
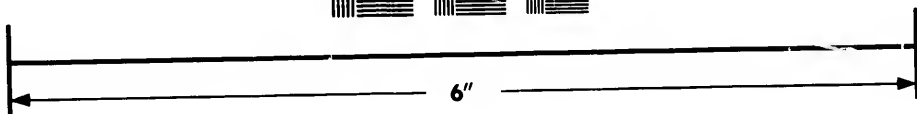
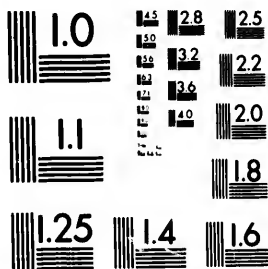


**IMAGE EVALUATION  
TEST TARGET (MT-3)**



**Photographic  
Sciences  
Corporation**

23 WEST MAIN STREET  
WEBSTER, N.Y. 14580  
(716) 872-4503

13 28  
8 32 25  
8 22  
20  
8

**CIHM/ICMH  
Microfiche  
Series.**

**CIHM/ICMH  
Collection de  
microfiches.**



Canadian Institute for Historical Microreproductions / Institut canadien de microreproductions historiques

11  
10  
71

**© 1981**

Technical and Bibliographic Notes/Notes techniques et bibliographiques

The Institute has attempted to obtain the best original copy available for filming. Features of this copy which may be bibliographically unique, which may alter any of the images in the reproduction, or which may significantly change the usual method of filming, are checked below.

L'Institut a microfilmé le meilleur exemplaire qu'il lui a été possible de se procurer. Les détails de cet exemplaire qui sont peut-être uniques du point de vue bibliographique, qui peuvent modifier une image reproduite, ou qui peuvent exiger une modification dans la méthode normale de filmage sont indiqués ci-dessous.

- Coloured covers/  
Couverture de couleur
- Covers damaged/  
Couverture endommagée
- Covers restored and/or laminated/  
Couverture restaurée et/ou pelliculée
- Cover title missing/  
Le titre de couverture manque
- Coloured maps/  
Cartes géographiques en couleur
- Coloured ink (i.e. other than blue or black)/  
Encre de couleur (i.e. autre que bleue ou noire)
- Coloured plates end/or illustrations/  
Planches et/ou illustrations en couleur
- Bound with other material/  
Relié avec d'autres documents
- Tight binding may cause shadows or distortion  
along interior margin/  
La reliure serrée peut causer de l'ombre ou de la  
distortion le long de la marge intérieure
- Blank leaves added during restoration may  
appear within the text. Whenever possible, these  
have been omitted from filming/  
Il se peut que certaines pages blanches ajoutées  
lors d'une restauration apparaissent dans le texte,  
mais, lorsque cela était possible, ces pages n'ont  
pas été filmées.
- Additional comments:/  
Commentaires supplémentaires:

- Coloured pages/  
Pages de couleur
- Pages damaged/  
Pages endommagées
- Pages restored and/or laminated/  
Pages restaurées et/ou pelliculées
- Pages discoloured, stained or foxed/  
Pages décolorées, tachetées ou piquées
- Pages detached/  
Pages détachées
- Showthrough/  
Transparence
- Quality of print varies/  
Qualité inégale de l'impression
- Includes supplementary material/  
Comprend du matériel supplémentaire
- Only edition available/  
Seule édition disponible
- Pages wholly or partially obscured by errata  
slips, tissues, etc., have been refilmed to  
ensure the best possible image/  
Les pages totalement ou partiellement  
obscurcies par un feuillet d'errata, une pelure,  
etc., ont été filmées à nouveau de façon à  
obtenir la meilleure image possible.

This item is filmed at the reduction ratio checked below/  
Ce document est filmé au taux de réduction indiqué ci-dessous.

10X	14X	18X	22X	26X	30X
<input type="checkbox"/>	<input checked="" type="checkbox"/>	<input type="checkbox"/>	<input type="checkbox"/>	<input type="checkbox"/>	<input type="checkbox"/>
12X	16X	20X	24X	28X	32X

The copy filmed here has been reproduced thanks to the generosity of:

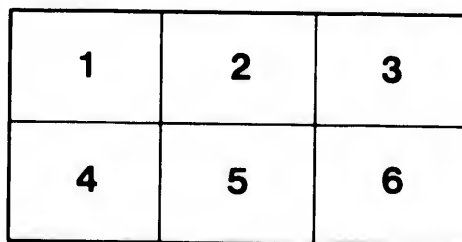
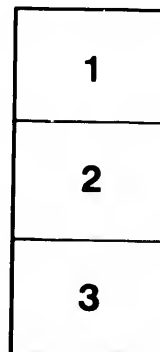
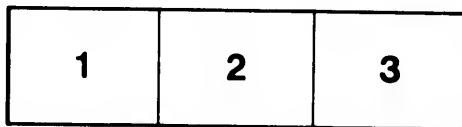
Library Division  
Provincial Archives of British Columbia

The images appearing here are the best quality possible considering the condition and legibility of the original copy and in keeping with the filming contract specifications.

Original copies in printed paper covers are filmed beginning with the front cover and ending on the last page with a printed or illustrated impression, or the back cover when appropriate. All other original copies are filmed beginning on the first page with a printed or illustrated impression, and ending on the last page with a printed or illustrated impression.

The last recorded frame on each microfiche shall contain the symbol → (meaning "CONTINUED"), or the symbol ▼ (meaning "END"), whichever applies.

Maps, plates, charts, etc., may be filmed at different reduction ratios. Those too large to be entirely included in one exposure are filmed beginning in the upper left hand corner, left to right and top to bottom, as many frames as required. The following diagrams illustrate the method:



L'exemplaire filmé fut reproduit grâce à la générosité de:

Library Division  
Provincial Archives of British Columbia

Les images suivantes ont été reproduites avec le plus grand soin, compte tenu de la condition et de la netteté de l'exemplaire filmé, et en conformité avec les conditions du contrat de filmage.

Les exemplaires originaux dont la couverture en papier est imprimée sont filmés en commençant par le premier plat et en terminant soit par la dernière page qui comporte une empreinte d'impression ou d'illustration, soit par le second plat, selon le cas. Tous les autres exemplaires originaux sont filmés en commençant par la première page qui comporte une empreinte d'impression ou d'illustration et en terminant par la dernière page qui comporte une telle empreinte.

Un des symboles suivants apparaîtra sur la dernière image de chaque microfiche, selon le cas: le symbole → signifie "A SUIVRE", le symbole ▼ signifie "FIN".

Les cartes, planches, tableaux, etc., peuvent être filmés à des taux de réduction différents. Lorsque le document est trop grand pour être reproduit en un seul cliché, il est filmé à partir de l'angle supérieur gauche, de gauche à droite, et de haut en bas, en prenant le nombre d'images nécessaire. Les diagrammes suivants illustrent la méthode.

ails  
du  
odifier  
une  
nage

rata  
elure,  
à

NWp  
9718  
C357

CATALOGUE .

OF

PHOTOGRAPHIC  
VIEWS

ON THE LINE OF THE

CANADIAN PACIFIC RAILWAY



MONTREAL, APRIL, 1899

# INDEX.

---

Nova Scotia.....	1
New Brunswick .....	1
Maine .....	3
Quebec.....	3
Quebec City .....	4
Ottawa.....	5
Lake Superior.....	5
Manitoba .....	6
Assiniboia. ....	11
Alberta .....	12
The Rockies.....	14
Crow's Nest .....	18
Kootenay .....	19
British Columbia .....	21
Vancouver.....	31
New Westminister .....	32
Victoria.....	33
Paintings .....	33
Large Views, 18 x 22.....	35
Panoramic Views .....	39

CATALOGUE

OF

PHOTOGRAPHIC  
VIEWS

ON THE LINE OF THE

CANADIAN PACIFIC RAILWAY



MONTREAL, APRIL, 1899

PROVINCIAL ARCHIVES OF B. C.

1  
1  
3  
3  
4  
5  
5  
6  
11  
12  
14  
8  
9  
1  
1  
2  
3

**Canada**

**Unm**

951

952

953

954

955

956

957

958

959

960

961

962

963

964

965

966



# Canadian Pacific Railway Views

SIZE:—8 x 10.

Unmounted, 35c.

Mounted, 45c.

---

## NOVA SCOTIA.

- 951 Digby, N. S., From West
- 952 The Gut, Digby
- 953 Entrance to Digby Basin
- 954 Over Digby Basin
- 955 Over Digby Basin
- 956 SS. Prince Rupert at Digby
- 957 SS. Prince Rupert Wharf, Digby

## NEW BRUNSWICK.

- 958 St. John, from Fort Howe
- 959 St. John, Harbor, from Fort Howe
- 960 Entrance to St. John, Harbor, from Fort  
Howe
- 961 St. John Harbor, from West
- 962 St. John Harbor, from West
- 963 Market Slip, St. John
- 964 St. John, from C. P. R. Elevator
- 965 St. John, from Fairville
- 966 Suspension Bridge and Reversible Falls, St.  
John

967	Reversible Falls from below St. John	
968	Winter Port Docks, West St. John	
969	Road to Lily Lake in Park, St. John	999
970	Looking over Lily Lake in Park, St. John	1000
971	Roadway in Park, St. John	1001
972	Lily Lake in Park, St. John	1002
973	Outlet of Lily Lake in Park, St. John	1003
974	Brook in Park, St. John	1004
975	Navy Island and West St. John, from Fort Howe	1005 1006
976	Slips at West St. John	1007
977	Courtney Bay, from West St. John	1008
978	Over West St. John, from Fairville	1009
979	Over West St. John, from Fairville	
980	Fishing Weirs at West St. John	
981	St. John River, Westfield Beach	
982	Westfield Beach	
983	St. John River, West of Westfield Beach	
984	St. John River, East of Westfield Beach	1010
985	Summer Residences, St. John River, near Lingley	1011 1012
986	Woodman's Point, near Lingley	1013
987	Beach at Woodman's Point, near Lingley	1014
988	Grand Falls	1015
989	Grand Falls and Lumber Jamb	1016
990	Grand Falls, from above	1017
991	Grand Falls, from below	1018
992	Grand Falls and Suspension Bridge	1019
993	Grand Falls and Suspension Bridge	1020
994	Grand Falls Canon	1021
995	Grand Falls Canon from Bridge	1022
996	Grand Falls Canon from above	1023
997	C. P. R. Bridge, St. John River, Aroostook	1024
998	St. John River, Aroostook	1025 1026

## MAINE.

- John  
 999 C. P. R. Bridge, Brownville River  
 1000 On Ship Lake, Onawa  
 1001 Fishing Camp, Ship Lake, Onawa  
 1002 Boarstone Mtn., and Ship Lake, Onawa  
 1003 Boarstone Mtn., Onawa  
 1004 Lake View  
 om Fort 1005 Lake View  
 1006 At Lake View  
 1007 Moosehead Lake, Greenville  
 1008 Down Moosehead Lake, Greenville  
 1009 Moosehead Lake from Track, Greenville

## QUEBEC.

- each  
 ach  
 er, near  
 1010 Down Magog River, Sherbrooke  
 1011 Magog River, Sherbrooke  
 1012 Sherbrooke Falls, from below  
 1013 Sherbrooke Falls, from below  
 gley 1014 Sherbrooke Falls  
 1015 Sherbrooke Falls and Bridge  
 1016 Sherbrooke Falls and Power House  
 1017 Horseshoe Curve, near St. Margaret  
 1018 Indian Mtn. Cut, St. Margaret  
 1019 Fork Lake, near St. Margaret  
 1020 St. Jerome River, near St. Margaret  
 1021 St. Jerome River near St. Margaret  
 1022 Sandy Lake, near St. Agathe  
 1023 Sandy Lake from West, St. Agathe  
 stook 1024 Trout Lake, near St. Agathe  
 1025 Lac Castor, near St. Agathe  
 1026 Lac Cabane, near St. Agathe

## QUEBEC CITY.

453½	Entrance to Court of Chateau Frontenac Hotel, Quebec	476
454	Lower Town Market and Citadel, Quebec	
455	Chateau Frontenac from Lower Town, Que.	477
456	Chateau Frontenac from Lower Town, Que.	478
457	Chateau Frontenac and Citadel from Lower Town, Quebec	479
458	Chateau Frontenac and Lower Town, Quebec	
459	Chateau Frontenac from Dufferin Terrace, Quebec	480
460	From Chateau Frontenac West, Quebec	481
461	Over St. Lawrence from Chateau Frontenac, Quebec	482
462	Down St. Lawrence from Chateau Frontenac, Quebec	483
750	Chateau Frontenac Hotel from Laval, Quebec	
751	From Chateau Frontenac Hotel, Quebec	
752	From Chateau Frontenac Hotel, Quebec	
463	Down St. Lawrence from Dufferin Terrace, Quebec	241
		242
464	Wolfe and Montcalm Monument, Quebec	243
465	From Ramparts, Looking East, Quebec	244
466	Ramparts, Quebec	245
467	St John's Gate, Quebec	246
468	Dufferin Gate, Quebec	247
469	St. Louis Gate, Quebec	248
470	Parliament Buildings, Quebec	248½
471	Montmorenci Falls near Quebec (horizontal)	249
472	Montmorenci Falls near Quebec (upright)	250
474	From Ramparts over Louise Basin, Quebec	251
475	Quebec from Levis	252
475½	Quebec from Levis	253
		254
		254½

## OTTAWA.

- 476 Parliament Buildings from Sapper's Bridge,  
Ottawa
- 477 In Park, Ottawa
- 478 Parliament Buildings, Library from Park,  
Ottawa
- 479 Parliament Buildings, from Tepean Point,  
Ottawa
- 480 Library, Parliament Buildings, etc., from  
West, Ottawa
- 481 Towards Chaudiere from Parliament Build-  
ings, Ottawa
- 482 Parliament Building and Western Block,  
Ottawa
- 483 Eastern Departmental Building, Ottawa

## LAKE SUPERIOR.

- 241 At Jack Fish, looking east
- 242 At Jack Fish, looking west
- 243 Fishing Village, Jack Fish
- 244 Fishing Village, Jack Fish
- 245 Drying Nets, Jack Fish
- 246 Lake Superior Trout and White Fish
- 247 Dressing Fish
- 248 Head of Jack Fish Bay
- 248½ Dressing Trout for Market
- 249 Lake St. Helen, Jack Fish
- 250 Tunnel at Jack Fish
- 251 View, South of Jack Fish Bay
- 252 View, South of Jack Fish Bay
- 253 View, South of Jack Fish Bay
- 254 Jack Fish Bay, from Red Sucker
- 254½ Shore, Lake Superior

255½	Breaking Wave	045
256	Hudson's Bay Post, Nepigon River	552
257	Hudson's Bay Post, Nepigon River	553
258	Red Rock, Nepigon	554
259	Red Rock, West of Nepigon	555
260	Red Rock, West of Nepigon	556
1	Fort William Station	557
2	Fort William Hotel	558
1027	Fort William, looking west	789
1028	C. P. R. Yards, from West Fort William	790
1029	Harbor, Fort William	791
1030	SS. Alberta entering Harbor, Fort William	792
1031	SS. Alberta, at Fort William	
1032	SS. Alberta in Dock, Fort William	793
1033	Elevators and SS. Alberta, Fort William	559
1034	C. P. R. Tank Elevator, from East Fort William	560
		561
1035	C. P. R. Tank Elevator, from across Kaministiquia River, Fort William	562
		563
1036	C. P. R. Tank Elevator, Fort William	564
855	Keewatin Flour Mill, Lake of the Woods	565
856	Fort William Elevators	566
857	Fort William Elevators	567
858	At Fort William, Cattle Grazing	568
		569
		570
		571
1037	Main Street from City Hall, Winnipeg	572
1038	Winnipeg, East from City Hall	573
1039	Main Street, looking South, Winnipeg	574
1040	Main Street, looking North	575
1041	Government Building, Winnipeg	576
1042	Winnipeg, from Court House	576
1043	Winnipeg, from Court House	577
1044	Winnipeg, from Court House	578

### MANITOBA.

- 045 Court House, Winnipeg  
 552 Pig Ranch, near Winnipeg  
 553 Pig Ranch, near Winnipeg  
 554 Pig Ranch, near Winnipeg  
 555 Pig Ranch, Young Pigs, near Winnipeg  
 556 Pig Ranch, Young Pigs, near Winnipeg  
 557 Buffalo, Silver Heights, near Winnipeg  
 558 Buffalo, Silver Heights near Winnipeg  
 789 Winnipeg, Loading Cattle at Yards  
 790 Winnipeg, Loading Cattle at Yards  
 791 Winnipeg, Looking towards C. P. Ry. Shops  
 792 Winnipeg, General View, West, 2,000 Cattle  
     in Yards  
 793 Winnipeg, Another  
 559 Corn Field, Silver Heights, near Winnipeg  
 560 Farm House, Silver Heights, near Winnipeg  
 561 Immigrants Camping, near Winnipeg  
 562 Cattle on Prairie, near Winnipeg  
 563 La Salle, S. W. Manitoba  
 564 La Salle, S. W. Manitoba  
 565 Brook at Morden, S. W. Manitoba  
 566 Jickling's Farm, Morden  
 567 Hill's Farm Buildings, Morden  
 568 Crain's Farm Buildings, Morden  
 569 Homestead Buildings, Morden  
 570 Mennonite Settlement, Gortage  
 571 Mennonite Settlement, Gortage  
 572 Mennonite Settlement, Gortage  
 573 Mennonite Farm, Settlement, Gortage  
 574 Crofter's Farm, near Killarney  
 575 Pelican Lake, near Killarney  
 576 Pelican Lake, near Killarney  
 576 Pelican Lake, near Killarney  
 577 Farm at Menteith  
 578 Souris River

579	Brick-field, Souris	9	A
3	Harvesting, Portage la Prairie	10	N
4	Tree Nursery, Brandon	01	F
6	Cattle, Brandon	02	"
7	General View, Brandon	03	F
8	Harvesting Wheat, Brandon	04	F
9	Farm, Portage la Prairie	05	A
580	Little Saskatchewan River, near Brandon	06	A
581	Farm on Little Saskatchewan River near Brandon, with Cattle	07	H
582	Farm on Little Saskatchewan River near Brandon, with Cattle	08	W
10	Seedling Avenue, Carberry	09	B
11	Farm with Trees, Carberry	10	E
12	Hope's Farm, showing Seedling Trees, Carberry	11	R
261	Hay-Making, Carberry	12	R
262	Lakes near Carberry	13	R
263	Lakes near Carberry	14	G
264	Lakes near Carberry	15	G
265	Lakes near Carberry	16	V
1046	Elevators, Virden, Man.	17	H
14	Bouverie and Routledge's Ranch, Virden	18	I
15	Bouverie and Routledge's Garden	19	S
16	Elphinston's Farm House, Virden	20	S
794	Homestead, near Winnipeg, 3 miles east	21	I
795	Milkers feeding, Winnipeg	22	T
796	Hay Meadow, near Birdhill, 6 miles West Winnipeg	23	T
797	Oatfield at Smith's Birdhill, 8 miles West Winnipeg		
798	At Smith's Farm, Birdhill, Reaping Oats		



- 9 At Smith's Farm, Horses, Wheatfields, etc.,  
Birdhill
- 10 Near Birdhill, Wheatfield, Reaping
- 11 Flouring Mill, Winnipeg
- 12 "We do the Reaping,"
- 13 Farm House, near Portage la Prairie
- 14 Farm Buildings, 12 miles North of Portage
- Brandon 15 Armstrong's Buildings, Portage Plains
- ver near 16 Armstrong's Buildings, Portage Plains
- 17 Homestead, Portage Plains, 12 miles North
- ver near 18 Wheatfields, Portage Plains
- 19 Brandon City, from Banks of Assiniboine  
River
- 20 Elevators, Brandon
- Trees, 21 Reaping, 8 miles North of Brandon, 4 Reap-  
ers (angle)
- 22 Reaping, 8 miles North of Brandon, 4 Reap-  
ers (horizontal)
- 23 Reaping, Another
- 24 Gretna, South Manitoba
- 25 Gretna Elevators
- 26 View, Harvest in Mennonite Settlement,  
near Gretna
- 27 Homestead, near Gretna
- 28 Loading Wheat in Mennonite Settlement,  
near Gretna
- 29 Stacking in Mennonite Settlement, 8 miles  
East of Gretna
- s West 30 Stackyard in Mennonite Settlement, 8 miles  
East of Gretna
- s West 31 Haystacks, 5 miles East of Gretna
- ats 32 Threshing Wheat from the Stook at Gretna,  
30 bushels per acre
- 33 Threshing, "Separator," Large

- |     |  |   |     |
|-----|--|---|-----|
| 824 | Threshing, "Separator," shewing Grain Bag                              | 9 | Do  |
| 825 | Threshing in Mennonite Settlement                                      |   | I   |
| 826 | Reaping Flax and Loading Wheat, near<br>Gretna                         | 0 | M   |
| 827 | Reaping Flax, South Manitoba   | 1 | Mo  |
| 828 | Flax Crop, South Manitoba  |   | t   |
| 829 | Flax "Stook," South Manitoba   | 2 | At  |
| 830 | Reaping, etc., Pembina Valley, S. Man.                                 | 3 | Pil |
| 831 | Between Morris and St. Jean, Pembina<br>Valley, South Manitoba         | 4 | Pil |
| 832 | St. Jean, South Manitoba   | 7 | Ha  |
| 833 | Wheatsheaf, Pembina Valley, South<br>Manitoba                          | 8 | Plo |
| 834 | Harvest Scene, in Pembina Valley, South<br>Manitoba                    |   |     |
| 835 | Oatsheaf, in Pembina Valley, South Manitoba                            |   |     |
| 836 | Near Martin's Farm, Pembina Valley, South<br>Manitoba                  | 9 | Ma  |
| 837 | Martin's Farm, Pembina Valley, South<br>Manitoba                       | 0 | Bu  |
| 838 | Martin's Farm, Pembina Valley, South<br>Manitoba                       | 1 | Ge  |
| 839 | Near Winkler, South Manitoba, 1 Reaper                                 | 2 | Ha  |
| 840 | Near Winkler, South Manitoba, 2 Reapers                                | 3 | Bu  |
| 841 | Grain, etc., Winkler in distance, South<br>Manitoba                    | 4 | Ex  |
| 842 | Elevators at Morden, from Fields, South<br>Manitoba                    | 4 | Ex  |
| 843 | Elevators at Morden and Cars Waiting                                   | 9 | Ex  |
| 844 | 2 miles East from Morden, 2 Reapers                                    | 0 | Ex  |
| 845 | Reaping near Morden  |   |     |
| 846 | Stacking near Morden (with trees)                                      | 5 | Fr  |
| 847 | Stacking near Morden   |   |     |
| 848 | Double View from Top of Pilot Mound, South<br>Manitoba, Miles of Wheat | 5 | Ca  |
|     |  | 3 | Ca  |

- Grain Bag 9 Double View from Top of Pilot Mound, South  
 nt 10 Manitoba, Miles of Wheat  
 heat, near 10 McGorrill's Farm, Pilot Mound, South  
 Manitoba  
 11 McGorrill's Farm, Pilot Mound, South Mani-  
 toba, (wider angle)  
 12 At Pilot Mound, (wide view)  
 Man. 13 Pilot Mound, Wheatfields  
 Pembina 14 Pilot Mound, Oatfield  
 17 Hanna's Farm, Griswold  
 y, South 18 Ploughing, 15 horses and 4 oxen, 17 Fur-  
 rows, Hanna's Farm, Griswold

### ASSINIBOIA.

- Manitoba 19 Maples, Experimental Farm, Indian Head  
 ley, South 20 Buildings, Experimental Farm, Indian Head  
 y, South 21 General View from South, Experimental  
 Farm, Indian Head  
 y, South 22 Harvesting, Experimental Farm, Indian  
 Head  
 Reaper 23 Bunch of Cattle, Experimental Farm, Indian  
 Reapers Head  
 ce, South 27 Experimental Farm and Indian Head  
 28 Experimental Farm, House and Barns, in-  
 ds, South dian Head  
 29 Experimental Farm, General View South,  
 ting Indian Head  
 rs 30 Experimental Farm, General View North,  
 Indian Head  
 31 From Experimental Farm, North, Indian  
 Head  
 nd, South 32 Cattle, Experimental Farm, Indian Head  
 33 Cattle, Experimental Farm, Indian Head

- 1054 Maple Hedges, Experimental Farm, India  
Head
- 1055 Maple Hedges, Experimental Farm, India  
Head
- 1956 Maple Avenue, Experimental Farm, India  
Head
- 1057 Poplar Avenue, Experimental Farm, India  
Head
- 1058 Elevators, Indian Head
- 1059 Harvesting, Brassey Estate, Indian Head  
(7 Reapers)
- 267 Harvesting, Swift Current

### ALBERTA.

- 25 Calgary, from South East
- 26 Elbow River, Calgary
- 283 Calgary, from North of Bow River
- 284 Bow River, Calgary and Rockies in Distance
- 285 Calgary, from North East
- 286 Alberta Hotel, Calgary
- 287 Molson's Bank, Calgary
- 288 Flock of Sheep, Calgary
- 289 Flock of Sheep, Calgary
- 290 On Sheep Ranch, Calgary
- 291 Herder and Sheep, Calgary
- 292 Approaching Storm, near Calgary
- 293 Blackfoot Camp, Bow River
- 294 Stoney Indian Polo Team, Calgary
- 295 Indian Travois, Calgary
- 1060 Horse Round Up, near Calgary
- 1061 Robinson's Horse Ranch, near Calgary
- 1062 Robinson's Horse Ranch, near Calgary
- 1064 Horses at Water, near Calgary
- 1035 Brood Mare Round Up, near Calgary

- arm, India  
 arm, India  
 arm, India  
 arm, India  
 lian Hea  
 n Distanc  
 gary  
 gary  
 ry
- 8 Horse Branding, near Calgary
  - 9 Cattle Roping, near Calgary
  - 0 Cattle Branding, near Calgary
  - 1 Cattle and Cowboys, near Calgary
  - 2 "Little Bear," Stoney Indian, near Calgary
  - 3 Sarcee Indian Camp, Calgary
  - 4 Saskatchewan River, Edmonton
  - 5 Hudson's Bay Fort, over Saskatchewan River, Edmonton
  - 6 Clover Bar Ferry, Saskatchewan River, near Edmonton
  - 7 Price's Wheat Field, near Edmonton
  - 8 Price's Farm and Garden, near Edmonton
  - 9 Cable Ferry across Saskatchewan River, Edmonton
  - 0 Cattle Ranching, Round-up, near Macleod
  - 1 Cattle Ranching, Round-up, near Macleod
  - 2 Cattle Ranching, Round-up, going to Water, near Macleod
  - 3 Cattle Ranching, Round-up, Willow Creek, near Macleod
  - 4 Cattle Ranching, Round-up Camp near Macleod
  - 5 Cattle Ranching, Cowboys "roping" Fresh Horses, near Macleod
  - 6 Round-up, Herd of Saddle Horses, near Macleod
  - 7 Round-up, Herd of Saddle Horses, near Macleod
  - 8 Horse Ranching, Horses Crossing Brook, near Macleod
  - 9 Horse Ranching, Horses at Water, near Macleod
  - 0 Horses and Cowboy, near Macleod
  - 1 Horses and Cowboy, near Macleod

- 281 Moving Camp and Group of Cowboys, near  
Macleod  
282 Herd of Horses, near Macleod

### THE ROCKIES.

- 583 Kananaskis Falls  
584 Kananaskis Falls  
585 Kananaskis Rapids and Head of Falls  
586 Kananaskis Rapids and Fairholme Range  
296 Wind Mountain and Bow River, from Gap  
297 Wind Mountain, from Gap  
587 Kananaskie Range, from "The Gap," east  
588 Wind Mountain, looking west from "Gap"  
590 The "Gap"  
33 Dairy Cattle, Canmore  
34 Three Sisters, Canmore  
35 Three Sisters from Bridge, Canmore  
298 White Man's Pass, Canmore  
299 Three Sisters, from Bluff, North of Canmore  
300 Canon, North of Canmore  
301 Three Sisters and Natural Pillars, Canmore  
302 Three Sisters and Natural Pillars, Canmore  
303 Natural Pillars, Canmore  
36 Natural Pillars, Banff  
37 Natural Pillars, Banff  
38 Spray Valley, Banff  
39 Hotel and Park from Hot Springs Road  
Banff  
40 Rundle Mt. from Railway Bridge, Banff  
41 Up Bow Valley, from Tunnel Mt., Banff  
42 Over Rocky Mountain Park, from Hot  
Springs, Banff  
43 Rocky Mountain Park, from Hotel, Banff  
305 C. P. R. Hotel, from Tunnel Mt., Banff

7 Ing  
8 Bo  
9 Mt  
0 Mt  
1 Do  
2 C  
3 Sur  
4 Up  
5 Do  
6 H  
7 Cas  
8 Cas  
9 Cas  
0 Pea  
1 Pea  
2 Mt  
3 Mt  
4 Cas  
5 Pe  
6 We  
7 Ru  
8 C  
9 4 n  
0 Bo  
1 Ma  
2 Ce  
3 To  
4 Tr  
5 Tw  
6 C.  
7 C.

- wboys, ne 7 Inglismaldie Mts., from near Spray Bridge,  
Banff
- 8 Bow River Falls. Banff
- 9 Mt. Edith, from C. P. R. Track, Banff
- 0 Mt. Edith, from Sun Dance Road, Banff
- 1 Down Bow River and Rundle Mt., from  
C. P. R. Bridge, Banff
- 2 Sun Dance Canon, Looking Up, Banff
- Falls 3 Sun Dance, Looking Out Banff
- ne Range 4 Up Bow River, from near Cave, Banff
- from G 5 Down Bow River, from Sun Dance Road,  
Banff
- ap," east 16 Cascade Mt., from Sun Dance Road, Banff
- m "Gap 17 Cascade Mt., from C. P. R. Banff
- 19 Cascade Mt., from below Bridge, Banff
- 20 Peak of Cascade Mt., from Tunnel Mt., Banff
- 21 Peak of Cascade Mt., Banff, (Telescopic)
- re 22 Mt. Massive and Bourgeau Range, Banff
- 91 Mt. Pechee above Anthracite
- f Canmor 92 Cascade Mt., from Anthracite
- 93 Peaks between Cascade and Squaw Mts.
- , Canmor 95 West from Banff Station
- , Canmor 96 Vermillion Mt., from Track, Banff
- 97 Rundle Mt., from Meadow, Vermillion  
Creek, Banff
- 98 4 miles West of Banff, from Track
- 99 Bourgeau Range, 4 miles west of Banff
- ngs Road 00 Main Range, 2 miles west of Banff
- 01 Central Peak, Main Range (Telescopic)
- Banff 02 Top of Frog's Head Mountain (Telescopic)
- Banff 03 Track, 1 mile west of Banff
- from He 04 Twin Peaks, from Spray Valley Road
- 05 C. P. Ry. Hotel and Spray Valley, from New  
Road
- . Banff 06 C. P. Ry. Hotel, from South-west
- anff

- 607 C. P. Ry. Hotel, from Tunnel Mt.  
 608 Rundle Mt., from Buffalo Avenue  
 609 Park Road, Tunnel Mt.  
 610 "Corkscrew Road," Tunnel Mt., Rocky  
 Mountain Park  
 611 Cascade Mt. from north of Tunnel Mt., Banff  
 612 Vermillion Mt. from north of Tunnel Mt.,  
 Banff  
 614 Gap between Tunnel and Rundle Mts.  
 615 Shoulder of Rundle and Fairholme Range  
 616 Sulphur Range from Park, South  
 617 Fairholme Range from Rocky Mountain  
 Park  
 618 At Banff Village from Bed of Bow R.  
 619 Rundle from Squaw R.  
 621 Up Vermillion Creek  
 622 On Vermillion Creek towards Squaw Mt.  
 623 At Vermillion Lake  
 624 Cave House, Banff  
 625 Pool at Hotspring Cave  
 1118 Interior of Cave, Banff  
 1119 Cascade Mtn. from East, Banff  
 1120 Cascade Mtn. and Buffalo, Banff  
 1121 C. P. R. Livery, Banff  
 627 Goat and Saddle Mts., 3 miles East of  
 Laggan  
 628 Track 3 miles East of Laggan  
 44 Mirror Lake, near Laggan  
 46 Mirror Lake and Victoria Peaks, near  
 Laggan  
 47 Lake Agnes, near Laggan  
 48 Lake Agnes, near Laggan  
 49 At Rock Fall above Lake Louise, near  
 Laggan

Ro  
 La  
 La  
 Ba  
 Ba  
 Ap  
 S  
 Ch  
 Di  
 La  
 La  
 Go  
 Mt  
 Pea  
 Up  
 On  
 Mt  
 L  
 644 Mt  
 645 Lag  
 646 Mt  
 647 Mt  
 Up  
 Bo  
 Mt  
 Mt  
 c  
 Vi  
 On  
 Fr  
 Ca  
 Ca



- Rocks and Glaciers of Mt. Lefroy, near  
Laggan
- Lake Louise from Chalêt, near Laggan
- Lake Louise, from West side, near Laggan
- Bath Glacier, near Laggan
- Bath Glacier (Telescopic)
- Approach to Chalêt, Lake Louise, after Snow  
Shower
- Chalêt at Lake Louise after Snow Shower
- Dining Room at Chalêt, Lake Louise
- Lake Louise from Chalêt
- Lake Louise and Glaciers, near Laggan
- Goat Mt. and East Side of Lake Louise
- Mt. White (Telescopic)
- Peak above Lake Agnes (Telescopic)
- Up Track from Laggan
- One Mile West from Laggan
- Mt. Temple and Saddle Mt., from West of  
Laggan
- Mt. Temple from West of Laggan
- Laggan Mt., from West
- Mt. Hector, from Laggan
- Mt. Hector, from Laggan (Telescopic)
- Up Bow River, from West of Laggan
- Bow River, from track West of Laggan
- Mts. round Lake Louise, West of Laggan
- Mt. Lefroy from West of Laggan (Teles-  
copic), highest Mt. on C.P.Ry.
- Victoria Peak and Castle Rocks (Telescopic)
- On Bath Creek, near Laggan
- From Slate Quarry West
- Cathedral, from Slate Mt., near Laggan
- Cathedral Peak (Telescopic)

- 658 West of Bath Creek, 8 miles from Laggan  
 660 Bath Glacier and Valley, near Laggan  
 661 Bath Glacier and Valley, near Laggan (Tele-  
 scopic)

### CROW'S NEST

- |      |   |      |    |
|------|---|------|----|
| 1072 | Table Mtn., Fernie                                  | 1076 | E  |
| 1073 | Table Mtn., and Elk River, Fernie                   | 1077 | E  |
| 1074 | Elk River, West of Fernie                           | 1078 | E  |
| 1075 | Elk River, Coal Creek                               | 1079 | E  |
| 1076 | Elk River, Morrisey                                 | 1080 | G  |
| 1077 | Down Kootenay River, Wardner                        | 1081 | G  |
| 1078 | Kootenay River, West of Wardner                     | 1082 | D  |
| 1079 | Kootenay River, near Wardner                        | 1083 | D  |
| 1080 | Kootenay River, at Wardner                          | 1084 | D  |
| 1081 | Up Kootenay River, West of Wardner                  | 1085 | D  |
| 1082 | Kootenay River, East of Wardner                     | 1086 | U  |
| 1083 | From track, East of Cranbrook                       | 1087 | St |
| 1084 | Prairie and Cattle, Cranbrook                       |      |    |
| 1085 | Rockies, from Cranbrook                             |      |    |
| 1086 | Wild Horse Gulch, East of Cranbrook<br>(Telescopic) | 1139 | C. |
| 1087 | Moyie Lake  | 1140 | D. |
| 1088 | Moyie Lake, from track                              | 1141 | D. |
| 1089 | Moyie Lake, looking East                            | 1142 | Co |
| 1090 | Moyie Lake, looking West                            | 1143 | C. |
| 1091 | Across Moyie Lake                                   |      |    |
| 1092 | Moyie Lake, towards Outlet                          | 1144 | D. |
| 1093 | Moyie Lake, from track East                         | 1145 | U  |
| 1094 | Moyie River, West of Moyie City                     | 1146 | St |
| 1095 | Moyie River, West of Moyie City                     | 1147 | St |
| 1096 | Moyie River, West of Moyie City                     | 1148 | H  |
| 1097 | From track, East of Elko                            | 1149 | Sl |
| 1098 | Elk River Valley, Elko                              |      |    |

- Laggan  
rgan  
gan (Tel
- 9 Sheep Mtn., Elko  
 10 Sheep Mtn., from track, Elko  
 11 Elk River Valley, from South Elko  
 12 Sheep Mtn. and Elk River Valley, Elko  
 13 Elk River, Elko  
 14 Down Elk River, Elko  
 15 Down Elk River Canon, Elko  
 16 Elk River Falls, Elko  
 17 Elk River Canon and Falls, Elko  
 18 Elk River Canon and Falls, Elko  
 199 Elk River Canon, Elko  
 110 Goat River Canon, Elko  
 111 Goat River Canon, Elko  
 112 Duck Lake, near Kootenay Landing  
 113 Duck Lake, towards Kootenay Landing  
 114 Duck Lake, looking West  
 115 Duck Lake, looking East  
 116 Up Kootenay Lake, Crow's Nest Pass  
 117 Steamer Nelson on Kootenay Lake

ner

Cranbrook

### KOOTENAY.

- 1139 C. P. R. Hotel, Revelstoke, B.C.  
 1140 Dining Room, C.P.R. Hotel, Revelstoke, B.C.  
 1141 Down Columbia River, Revelstoke, B.C.  
 1142 Columbia River at Revelstoke, B.C.  
 1143 C. P. R. Wharf and Steamer Kootenay,  
 Arrowhead, B.C.  
 1144 Down Arrow Lake, Arrowhead, B.C.  
 1145 Up Arrow Lake, from Arrowhead, B.C.  
 1146 Steamer Kootenay leaving Arrowhead, B.C.  
 1147 Steamer Kootenay in Dock, Arrowhead, B.C.  
 1148 Halcyon Springs Hotel, Arrow Lake, B.C.  
 1149 Slocan Lake at Roseberry, B.C.

1150	Up Slocan Lake, from Roseberry, B.C.		
1151	Steamer Slocan at Roseberry, B.C.		
1152	Trail, B.C., and Columbia River from Smelter Hill	123	S
1153	Trail, B.C., from West	124	S
1154	Main Street, Trail, B.C.	125	S
1155	C. P. P. Smelter, Trail, B.C.	126	S
1156	Roast Heaps, C. P. R. Smelter, Trail, B.C.	127	S
1157	Furnaces, C. P. R. Smelter, Trail, B.C.	128	S
1158	Rossland, B.C., from Le Roy Mine	129	S
1159	Le Roy Mine, Rossland, B.C.	130	H
1160	Columbia Avenue, Rossland, B.C.	131	S
1161	Over Columbia Avenue, Rossland, B.C.	132	S
1162	Over Columbia Ave. with Le Roy and War Eagle Mines, Rossland, B.C.	133	S
1163	Nelson, B.C., from C. P. R. Wharf	134	S
1164	Nelson, B.C., from Hall Mines	135	S
1165	Nelson, B.C., from Hall Mines	136	S
1166	Hall Mines Smelter, Nelson, B.C.	137	S
1167	Hall Mines Smelter, from East, Nelson, B.C.	688	S
1168	Baker Street, Nelson, B.C.	689	S
1169	Over Kootenay Lake, from Hall Mines, Nel- son, B.C.	138	C
1170	Down Kootenay Lake, Nelson, B.C.	690	C
1171	Kootenay Lake, from C. P. R. Wharf, Nelson, B.C.	65	H
1172	Steamer Kokanee at Nelson, B.C.	66	M
1173	Steamer Kokanee, Kootenay Lake, Nelson, B.C.	67	I
1174	Saloon, Steamer Kokanee	68	C
1175	Dining Room, Steamer Kokanee	69	S
1176	Kaslo, B.C.	70	S
1177	Sandon, B.C., from West.	71	H
1178	Slocan Star Concentrator, Sandon, B.C.	72	C
1179	Reco Avenue, Sandon, B.C.	73	C
		74	I
		75	I

## BRITISH COLUMBIA.

- C.  
er from
- 123 Surprise Creek  
124 Surprise Creek Bridge  
125 Surprise Creek Bridge, from above  
126 Surprise Creek Bridge, from above  
127 Surprise Creek Bridge, from below  
1, B.C.  
C.  
128 Surprise Creek Bridge, from below  
129 Surprise Creek Bridge, from below  
130 Peaks above Stoney Creek Bridge  
131 Stoney Creek Bridge and C. P. R. Express  
132 Stoney Creek Bridge and Beaver Valley  
.C.  
and War  
133 Stoney Creek Bridge, from above  
134 Stoney Creek Bridge, from above  
135 Stoney Creek Bridge, from below  
136 Stoney Creek Bridge, from below  
137 Stoney Creek Bridge, from below  
688 Stoney Creek Bridge, nearest view  
son, B.C.  
689 Stoney Creek from north, across Beaver  
Valley  
138 Cascade Bridge in Construction  
nes, Nel-  
690 Great Glacier, from near Station  
65 Hermit Range, from Glacier Hotel  
66 Mt. Sir Donald, from road to Great Selkirk,  
Glacier  
Nelson,  
67 Hermit Range and Snow Sheds  
68 Cheops, from Bridge over Illicilliwaet R.,  
Glacier  
Nelson,  
69 Sir Donald and Snow Slide  
70 Sir Donald from Glacier Road  
71 Foot of Sir Donald Snow Slide  
72 Glacier Hotel and Train  
.C.  
73 Great Selkirk Glacier, from Platform  
74 Illicilliwaet River and Great Glacier  
75 Hermit Range from Glacier Road

76	Cougar Mt., from Snow Shed 22	371
77	Glacier with Fountains, in Hotel Grounds	372
78	Snow Shed 22	373
79	McDonald Range, from Snow Shed 22	374
80	Great Glacier, from Avalanche Mt.	
81	Peak of Mt. Sir Donald (Telescopic)	375
82	Top of Cheops (Telescopic)	376
83	Cougar Mt., from Loop (Telescopic)	377
84	Moraine of Great Glacier	378
85	Hermit Range, from Glacier Platform	379
86	Face of Great Glacier	380
351	Rogers Pass Station, Mt. Cheops	382
352	Rogers Pass Station and Mt. McDonald	384
353	Mt. McDonald, from Roger's Pass	53
354	Mt. McDonald	53½
355	Mt. McDonald and Snc. "Glances"	55
356	Hermit Mt., east of Roger's Pass	56
357	Hermit Mt., from Snow Shed 7	57
358	Hermit Mt., from Snow Shed 8	58
359	Hermit Mt., from near Snow Shed 16	59
360	Cheops, from Roger's pass	60
361	Precipice on Hermit Mt. (Telescopic)	61
362	Top of Cheops from Roger's Pass	62
363	Peaks above Hermit Glacier (Telescopic)	63
364	Hermit Glacier (Telescopic)	
365	Great Selkirk Glacier, from Snow Shed 16 (Telescopic)	64 64½
366	Asulkan Glacier, from Snow Shed 16 (Telescopic)	662
367	Asulkan Glacier, from Snow Shed 16 (Telescopic)	663 664
368	The Great and Ross Peak Glaciers, from Snow Shed 16	665 666
369	Down Valley, from rear of Glacier Station	
370	Avalanche Mt. and Glacier Hotel Lawn	667

- 371 Glacier Hotel, from Lawn  
 372 Great Selkirk Glacier and Hotel  
 373 Illicilliwaet Valley from Glacier Station  
 374 Cheops and Hermit Range from Road to  
     Great Glacier  
 375 Glacier on Mt. Sir Donald (Telescopic)  
 376 Ross Peak Glacier, from Snow Shed 31  
 377 Ross Peak Glacier, from Loop  
 378 The Loops  
 379 Macdonald Ridge, from Snow Shed  
 380 Mt. Sir Donald, from near Ross Peak Station  
 382 The Asulkan Glacier  
 384 Foot of Great Glacier  
     53 Kicking Horse Flats, near Field  
     53½ Cathedral Mt., Field  
     55 Mt. Hector from Boulder Creek, Field  
     56 Kicking Horse Flats, from West of Field  
     57 Mt. Field, in Mist  
     58 Mt. Stephen House, Field  
     59 The Summit of the Rockies  
     60 Kicking Horse Canon  
     61 Neck of Kicking Horse Canon  
     62 Cathedral Mt., from Summit (Telescopic)  
     63 The Great Divide between Pacific and At-  
         lantic Oceans  
     64 Peak of Cathedral Mt. (Telescopic)  
     64½ Glacier on Shoulder of Mt. Stephen (Tele-  
         scopic)  
 662 Falls on the Wapta River, near Hector  
 663 In Kicking Horse Pass, Mt. Field in distance  
 664 Second Crossing of Kicking Horse  
 665 Kicking Horse Valley  
 666 Cathedral Mt., from Kicking Horse Pass  
     (Telescopic)  
 667 Valley of North Fork of Kicking Horse

668	Valley of North Fork of Kicking Horse from Third Switch	328
669	Mt. Stephen, from Track near Tunnel	345
670	Mt. Stephen, from East	346
671	Tunnel, Mt. Stephen	346½
672	Down Kicking Horse Grade, from Tunnel	347
329	Mt. Field and Kicking Horse Flats	348
330	Mt. Stephen Hotel, Field	
331	Field	349
673	Dining Room, Mt. Stephen Hotel	350
674	Dining Room, Mt. Stephen Hotel	350½
332	Field and Mt. Stephen, from Kicking Horse Flats	675
333	Field, from across Kicking Horse Flats	676
334	Down Kicking Horse Flats	
335	Mt. Burgess, Emerald Lake, near Field	677
336	From Camp, Emerald Lake, East, near Field	678
337	Emerald Lake, near Field	679
338	The Camp at Emerald Lake, near Field	680
339	An Hour's Fishing, Emerald Lake, near Field, 3 varieties of Trout	681
340	Head of Emerald Lake, near Field	682
341	Head of Emerald Lake from Camp, near Field	683
		684
342	Glacier and Stream at Head of Emerald Lake, near Field	685
		686
343	Emerald Peak, near Field	87
344	Van Horne Range, from Emerald Lake, near Field	91
		92
324	Van Horne Range, from Boulder Creek, West of Field	93
		94
325	Van Horne Range, from West of Field	95
326	Glacier, near Emerald Lake, near Field	88
327	Ottertail Mts., from Boulder Creek, Field	386



- ng Horse 328 Ottertail Mts., from Boulder Creek, near  
Field (Telescopic)
- nel 345 Leanchoil Mts.
- 346 Leanchoil Mts., from West
- Tunnel 346½ Leanchoil Mts. and Wapta River
- 347 The "Chancellor" at Leanchoil
- 348 Glacier on back of the "Chancellor," Lean-  
choil (Telescopic)
- 349 Beaverfoot Range, from Leanchoil
- 350 Mt. Hunter, Beaverfoot Range (Telescopic)
- 350½ Back of the "Chancellor," at Leanchoil
- ng Horse 675 Lower Kicking Horse Pass, four miles from  
Golden
- 676 Lower Kicking Horse Pass, three miles from  
Golden
- 677 Court House, Donald
- 678 Across Columbia River
- 679 Across Columbia River
- 680 Up Columbia River, Moberly Range in  
distance
- 681 Columbia River at Donald
- 682 Moberly Mts., from Track east of Donald
- mp, near 683 From Track, east of Donald
- 684 Peaks north of Donald (Telescopic)
- Emerald 685 Peak with Mist, near Donald (Telescopic)
- 686 Peak with Mist, near Donald (Telescopic)
- 87 Canon of Columbia River, near Donald
- l Lake, 91 Albert Canon
- 92 Albert Canon with Train
- Creek, 93 Albert Canon with Platform
- 94 Head of Albert Canon
- ld 95 Head of Albert Canon
- eld 98 Illicilliwaet River, near Revelstoke
- Field 386 Peaks on Columbia River, west of Revelstoke  
(Telescopic)

89	Mt. Begbie, near Revelstoke (Telescopic)	395	C
692	Clanwilliam Lake, Eagle Pass, near Revelstoke	396	C
693	Clanwilliam Lake, Eagle Pass, looking out of Snow Shed	398	C
694	Bluff and Track, at Clanwilliam Lake	401	V
695	Clanwilliam Lake and Snow Shed, west	402	P
696	Clanwilliam Lake, from Station, east	404	S
697	Lake Victor, Eagle Pass	404	P
698	Devil's Club. Eagle Pass	405	T
699	Eagle Pass, near Three-Valley Lake	406	T
700	Headwaters of Eagle River	712	M
701	Eagle River, 6 miles from Sicamous	713	L
702	Eagle River, 6 miles from Sicamous	714	V
703	Eagle River, 4 miles from Sicamous	715	S
704	Eagle River, 1 mile from Sicamous	716	I
705	Mouth of Eagle River, Shuswap Lake	717	A
706	On Shuswap Lake, Sicamous	718	W
707	Beach of Lake at Sicamous	719	W
708	Shuswap Lake, Sicamous	720	P
709	Mouth of Spallumsheen River, Sicamous	90	F
710	On Spallumsheen River, near Sicamous	721	B
711	Spallumsheen Lake, from Track, Sicamous and Okanagan Branch	722	B
97	Vernon, B. C.	723	M
387	Vernon	724	C
96	Indians at Vernon	725	T
98	Okanagan Lake	726	T
388	Lord Aberdeen's Farm, near Vernon	727	I
389	Lord Aberdeen's Farm, near Vernon	728	A
390	Hop Garden, Vernon	407	S
391	Young Orchard, Vernon	408	A
392	Road to Lord Aberdeen's House	409	I
393	Lord Aberdeen's House	410	C
394	C. P. R. Str. "Aberdeen," Okanagan Lake		

- 395 Okanagan Lake and C. P. R. Str. "Aberdeen"  
 396 Okanagan Lake at Penticton  
 398 Okanagan Lake, from Penticton  
 401 View at Penticton  
 402 Pool and Pines at Penticton  
 404 Saloon of C. P. R. Steamer "Aberdeen"  
 404 Penticton Wild Flowers  
 405 Trail to Mission, from Penticton  
 406 Trail to Fairview from Penticton  
 712 Meadows near Mara, Sicamous and Okanagan Branch  
 713 Landing Place at Old Eagle Pass  
 714 Vineyard at Old Eagle Pass  
 715 Shuswap Valley, from Government Road, Irrigated Lands  
 716 In Chase's Irrigated Garden Shuswap  
 717 Apple Tree in Chase's Irrigated Garden, Shuswap  
 718 Waterfall on Chase's Creek, Shuswap  
 719 Waterfall on Chase's Creek Shuswap  
 720 Pasture on Thompson River, Shuswap  
 90 Flooded Willows, Thompson River, Kamloops  
 721 Bay on Kamloops Lake  
 722 Bay on Kamloops Lake, with Plover  
 723 Mt. St. Paul, Kamloops  
 724 On Kamloops Lake  
 725 Track, 5 miles west of Kamloops  
 726 Tunnel and Cuttings, on Kamloops Lake  
 727 Rock Cuttings, on Kamloops Lake  
 728 At Cherry Creek, on Kamloops Lake  
 407 Savona's Ferry, Kamloops Lake  
 408 At Savona's Ferry, looking across Kamloops Lake  
 409 From Head of Kamloops Lake  
 410 On Kamloops Lake, Savona's Ferry

411	Pines in High Water, Kamloops Lake	429
412	Canon of Thompson River, near Ashcroft	430
413	Castle Rock, Thompson River, near Ashcroft	
414	At Black Canon, near Ashcroft	431
415	Black Canon, from east, near Ashcroft	432
416	Black Canon, from west, near Ashcroft	433
417	Black Canon and Thompson River, near Ashcroft	434
419	Water Fall, Spence's Bridge	113
420	Irrigation Flume, Spence's Bridge	114
421	Indian Graveyard, Spence's Bridge	115
422	Spence's Bridge, Thompson River	116
423	Water Fall at Thompson's Siding, near Lytton	117
424	Thompson Canon, 4 miles east of Lytton	118
526	Thompson River, near Lytton	119
427	Thompson Canon, 3 miles east of Lytton	120
428	Thompson Canon, near Lytton	121
99	Lytton and Upper Fraser	122
100	Fraser River at Lytton	123
103	Cantilever Bridge at Cisco, Fraser R. Canon	124
103½	Down Fraser River, from Cantilever Bridge	125
101	North Bend Hotel	125½
102	North Bend Hotel, from West	126
1180	Office C. P. R. Hotel, North Bend	128
1181	Dining Room, C. P. R. Hotel, North Bend	129
729	Salmon River Bridge, near North Bend	130
104	Carriboo Road, near Spuzzum	131
105	Carriboo Bridge, near Spuzzum	134
10	Indian Village, Spuzzum	730
108	Indian Graveyard, Spuzzum (Telescopic)	731
109	Showing Four Tunnels, near Spuzzum	732
110	Carriboo Bridge, near Spuzzum	733
111	Tunnel 14, near Spuzzum	
112	Near Spuzzum	734

- ake  
shcroft  
r Ashcroft
- 429 Retaining Wall, near Spuzzum  
430 Carriboo Road, near Spuzzum Bridge,  
Spuzzum  
431 Carriboo Road, near Spuzzum  
432 Fraser River above Carriboo Bridge, Spuzzum  
433 Fraser River, West, from Carriboo Bridge,  
Spuzzum.
- 434 Fraser River, West of Spuzzum  
113 Fraser River, below Spuzzum  
114 Fraser Canon, 5 miles above Yale  
115 Fraser Canon, 4 miles above Yale  
116 Fraser Canon, 4 miles above Yale  
117 Siwash Bluff, Fraser Canon  
118 Indian Horses, Yale  
119 Gold Washing, Yale  
120 Yale, B. C.  
121 Indian Burying Ground, Yale  
122 Entrance to Yale Pass  
123 Entrance to Yale Pass  
124 Indian Village, Yale  
125 Indian Village and Church  
125½ Mouth of Fraser Canon, Yale  
126 Hope Peaks, upright picture  
128 At Hope, horizontal  
129 Hope Peaks, horizontal
- 130 Harrison Springs Hotel, near Agassiz  
131 Harrison Springs Hotel, near Agassiz  
134 Experimental Farm, Agassiz  
730 Wheat at Experimental Farm, Agassiz  
731 Japanese Lilies, over 6 feet high, Agassiz  
732 Four Year Old Apple Tree, "Keswick Cod-  
ling," Agassiz  
733 Four Year Old Plum Tree, "Bradshaw,"  
Agassiz  
734 Branch of Plum Trees
- er Canon  
er Bridge
- Bend  
end
- opic)  
m

735	"Snyder" Blackberries, Agassiz	
736	Hop Ranch, "Washington," Agassiz	
737	Hop Ranch, "Washington," Agassiz	740
738	Hop Ranch, "Kent Golding," Agassiz	741
739	Hop Ranch, "Kent Golding," Agassiz	448
1182	Experimental Farm House, Agassiz	449
1183	Experimental Farm, General View, Agassiz	1196
1184	Experimental Farm, General View South, Agassiz	1197 1198
1185	Experimental Farm, General View, Agassiz	1199
1186	Young Apple Tree, Experimental Farm, Agassiz	1200
1187	Young Apple Tree, Experimental Farm, Agassiz	1201 1202
1188	Young Plum Tree, Experimental Farm, Agassiz	1203
1189	Young Plum Tree, Experimental Farm, Agassiz	1204 1205
1190	Young Plum Tree, Experimental Farm, Agassiz	1206 1207
1191	Young Orchard, Experimental Farm, Agassiz	1208
1192	Young Orchard, Experimental Farm, Agassiz	1209 1210
1193	Shrubs, Experimental Farm, Agassiz	1211
1194	Hedgerows, Experimental Farm, Agassiz	1215
1195	Sycamore Maple Avenue Experimental Farm, Agassiz	135 136
132	Ross' Fruit Farm, Harrison	137
133	Ross' Fruit Farm, Harrison	138
		140
		141
		142
		143

## VANCOUVER.

- z  
z  
siaz  
siaz  
z  
y, Agassiz  
w South,  
y, Agassiz  
l Farm,  
l Farm,  
l Farm,  
Farm,  
Farm,  
Farm,  
Farm,  
Farm,  
Farm,  
z  
assiz  
imental
- 740 Empress of India, SS.  
741 Bank of Montreal, Vancouver  
448 New Post Office, Vancouver  
449 C. P. R. Hotel, Vancouver  
1196 C. P. R. Hotel, Vancouver  
1197 C. P. R. Hotel, Vancouver  
1198 Corridor, C. P. R. Hotel, Vancouver  
1199 Ladies Drawing Room, C. P. R. Hotel,  
Vancouver  
1200 Dining Room, C. P. R. Hotel, Vancouver  
1201 Dining Room, C. P. R. Hotel, Vancouver  
1202 Over Vancouver Harbor, from C. P. R. Hotel  
1203 Towards Stanley Park, from C. P. R. Hotel,  
Vancouver  
1204 Granville Street, Vancouver  
1205 Inns of Court, Vancouver  
1206 SS. Empress of India in Dock, Vancouver  
1207 SS. Empress of India and Dock, Vancouver  
1208 SS. Empress of India, outward bound, Van-  
couver  
1209 SS. Athenian at Vancouver  
1210 In Stanley Park, Vancouver  
1211 Black Bear in Stanley Park, Vancouver  
1215 Big Hollow Cedar, Stanley Park, Vancouver  
135 Mossy Trees, Stanley Park, Vancouver  
136 Biggest Tree, Stanley Park, Vancouver  
137 Biggest Tree, Stanley Park, Vancouver  
138 Pathway and Big Trees, Stanley Park,  
Vancouver  
140 Big Trees, Stanley Park, Vancouver  
141 Beach, English Bay, Vancouver  
142 Big Trees, Stanley Park, Vancouver  
143 Indian Houses near Narrows, Vancouver

144	Looking over Stanley Park, Vancouver	748	G
145	Looking over Stanley Park, Vancouver		
146	SS. Empress of Japan, at Vancouver	749	C
147	SS. Empress of Japan, at Vancouver	450	V
148	H. M. S. Champion, Vancouver		
150	Shacks at Hastings	451	N
151	Saw Mills at Hastings	1214	N
435	Looking West, from Stanley Park Vancouver	452	M
436	At Narrows, Stanley Park, Vancouver	453	M
437	Big Hollow Cedar, Stanley Park, Vancouver		
438	Big Cedar, Stanley Park, Vancouver		
439	Vancouver, from Stanley Park		
441	Across False Creek, from Mt. Pleasant, Vancouver	152	E
442	Harbor towards Hastings	153	I
443	Harbor towards Hastings	154	I
444	School Houses, Vancouver	155	S
445	Y. M. C. A. Building, Vancouver	156	S
446	On Cordova Street, Vancouver	157	S
447	Bank of British North America, Vancouver	159	H
		160	H

### NEW WESTMINSTER.

1212	Salmon Fishing Fleet, near New Westminster		
1213	Salmon Fleet Casting Nets, near New West- minster	859	H
742	New Westminster, from West	860	S
743	Down Fraser River, from New Westminster	861	J
744	Salmon Cannery, below New Westminster	862	R
745	Camp of Siwashes and Chinese Workers in Canneries	863	H
		864	C
746	Salmon Catch at a Fraser River Cannery	865	C
747	Unloading Salmon, from Collecting Scows 25,000 in Sight	866	S
			3



- 748 60,000 Cans of Salmon, about Three Days  
Work  
749 Canneries at Steveston, mouth of Fraser R.  
450 Vancouver and New Westminster Electric  
Car  
451 New Westminster, from across Fraser River  
1214 New Westminster, from across Fraser River  
452 Main Street, New Westminster  
453 Main Street, New Westminster

### VICTORIA

- 152 Entrance to outer Harbor, Victoria, Van-  
couver Island  
153 In Park, Victoria  
154 In Park, Victoria  
155 Swans in Park, Victoria  
156 Swans in Park, Victoria  
157 Sealing Schooners in Harbor, Victoria  
159 H. M. S. Warspite in Esquimalt Dock  
160 H. M. S. Warspite in Esquimalt Dock

### FROM PAINTINGS.

#### 10 x 8 Size.

- 859 Hermit Mountain, Roger's  
Pass, B.C. W. Brymner, R.C.A.  
860 Sheep Ranch, Alberta J. Hammond, R.C.A.  
861 Jack Fish, Lake Superior "  
862 Routledge's Ranch, Virden, Alberta "  
863 Horses at Water, Willow Creek "  
864 Cattle Ranch, Alberta "  
865 Cattle Coming Down to Water,  
Willow Creek "  
866 Stoney Creek Bridge, B.C. "  
3

867	Horses, Early Morning, Alberta.	J. Hammond, R.C.A.	896
868	Great Glacier, B.C.	"	897
869	Three Sisters, Canmore, Alta	"	898
870	Begbie Mountain, Revelstoke, B.C.	"	899
871	Chateau Frontenac Hotel, Quebec	"	900
872	Farm near Brandon, Manitoba	"	901
873	Lake Louise, at Sunrise	W. Brymner, R.C.A.	902
874	Banff with Boats, Alta	J. Hammond, R.C.A.	903
875	Black Canon, Thompson River, B.C.	"	904
876	Yale Pass, Fraser River, B.C.	"	905
877	Hermit Pange, B.C.	"	906
878	Mt. Sir Donald and Great Glacier	W. Brymner, R.C.A.	907
879	Banff Hotel, from Springs Road	"	908
880	Banff Hotel, from Springs Road	"	909
881	The Loops, Selkirk Mountains	"	1216
882	The Illicilliwaet Valley	"	1217
883	Lake Louise, at Mid-day	"	1218
884	Lake Louise, at Sunrise	J. Hammond, R.C.A.	1219
885	Hellgate Canon of Fraser River, B.C.	W. Brymner, R.C.A.	1220
886	Lake Agnes, Rocky Mountains	"	1221
887	Castle Rock, Black Canon, Thomp- son River, B. C.	"	
888	Ross Peak, Selkirks, B.C.	"	
889	Mt. Stephen and Field, B.C.	"	
890	Bow Valley	J. Hammond, R.C.A.	
891	Ottertail Range	W. Brymner, R.C.A.	514
892	Black Canon	M. Seymour.	515
893	Mt. Baker, from Stave River, B.C.	W. Brymner, R.C.A.	516
894	Emerald Lake, B.C.	"	
895	Mount Stephen, B.C.	J. Hammond, R.C.A.	517

**Size,**  
"

R.C.A.	896	Castle Mountain	W. Brymner, R.C.A.
"	897	Banff	J. Hammond, R.C.A.
"	898	Van Horne Range	W. Brymner, R.C.A.
"	899	Hazel Peak and Victoria Glacier	J. Hammond, R.C.A.
"	900	Hazel Peak and Victoria Glacier	"
"	901	Paradise Valley	"
, R.C.A.	902	Roger's Pass	
, R.C.A.	903	Lakes in the Clouds	
"	904	Hermit Range	
"	905	Early Morning at Victoria Glacier	
"	906	Glacier House and Station	
"	907	Mt. Cheops	
, R.C.A.	908	Lakes above the Clouds,	J. Hammond, R.C.A.
"	909	Mt. Sir Donald	
"	1216	Vancouver	J. Hammond, R.C.A.
"	1217	Banff from across Bow River	
"	1218	Cathedral Peak	
"	1219	Mt. Sir Donald	W. Palmer, N.A.
, R.C.A.	1220	Hermit Range	W. Brymner, R.C.A.
, R.C.A.	1221	Mt. Massive	J. Hammond, R.C.A.

### LARGE VIEWS.

Size, 18 x 22 inches, Unmounted \$2.00 each.

" " " Mounted \$2.50 "

, R.C.A.	514	Quebec, from Louise Basin	
, R.C.A.	515	Chateau Frontenac Hotel, from Dufferin Terrace, looking North	
, R.C.A.	516	Chateau Frontenac Hotel and Citadel, Quebec	
, R.C.A.	517	Chateau Frontenac Hotel and Lower Town, Quebec	

518	Montmorenci Falls, near Quebec	768
519	Parliament Buildings, Ottawa	765
520	Parliament Buildings, from Neapean Point, Ottawa	757 758
521	Parliament Buildings, from Park, Ottawa	772
200	C. P. R. Elevators, from East, Fort William	774
201	C. P. R. Elevators, from West, Fort William	775
202	C. P. R. Elevators, Fort William	773
1216	Winnipeg, Man., from Court House	776
1217	Winnipeg, Man., looking East	771
490	Prairie Lake, near Carberry, Man.	777
491	Cattle Ranching, Round-up, Man.	770
492	Prairie and Rockies in distance, fine clouds	778
755	Fairholm Range and Kananaskis Rapids, Alberta	779
756	Kananaskis Falls, upper part Alberta	
205	C. P. R. Hotel, from Tunnel Mt., Banff	781
759	C. P. R. Hotel and Sulphur Range, Banff	780
760	C. P. R. Hotel, from Tunnel Mt., Banff	206
761	C. P. R. Hotel, from North-West, Banff	207
203	Rocky Mt. Park, from Hot Springs, Banff	208
204	Banff and Bow River Valley, from Tunnel Mt.	209 212
762	Fairholm Sub-range, from Tunnel Mt.	
763	Inglisma'die Mts., from Tunnel Mt.	213
764	Bow River, Rocky Mt. Park, Banff	
494	C. P. R. Hotel, from North-West, Banff	782
495	Down Bow River, from below C. P. R. Hotel, Banff	783
496	Down Bow River, from Rocky Mt. Park, Banff	214 210
497	Rocky Mt. Park, from Hot Springs, Banff	211
493	Mt. Massive and Bourgeau Range, Banff	502
766	Main Range, 8 miles west of Banff	503
767	Bourgeau Range, Banff	

- n Point,  
 tawa  
 William  
 William  
 e clouds  
 Rapids,  
 a  
 nff  
 anff  
 nff  
 nff  
 Banff  
 Tunnel  
 t.  
 nff  
 . Hotel,  
 . Park,  
 Banff  
 anff
- 768 Mt. Edith, from track, Banff  
 765 Mt. Rundle, from Vermillion Creek, Banff  
 757 Across Valley at Anthracite, near Banff  
 758 Cascade Mt., from Anthracite, Banff  
 772 Near Vermillion Pass, 4 miles east of Laggan  
 774 Mt. Temple, 3 miles east of Laggan  
 775 Saddle Mt., 3 miles east of Laggan  
 773 Goat and Saddle Mountains, Laggan  
 776 From Pipestone Creek, Laggan  
 771 Mt. Temple, from west of Laggan  
 777 From track at Bath Creek, Laggan  
 770 8 miles west of Laggan, south  
 778 Chal t at Lake Louise, Laggan, in early snow  
 779 Lake Louise, from Chal t, Laggan, in early snow  
 781 Lake Louise, early snow  
 780 Goat Mountain, Lake Louise, in early snow  
 206 Lake Louise, from Chal t  
 207 Lake Louise, from west side  
 208 Glacier, above Lake Louise  
 209 Rocks and Glacier, above Lake Louise  
 212 Mt. Stephen, from North-East, near North Fork of Kicking Horse  
 213 Mt. Stephen, from Mining Camp, Kicking Horse flats  
 782 Mt. Stephen and new rock slide of Cathedral Mountain  
 783 Kicking Horse Pass  
 214 Cathedral Mountain, from Kicking Horse flats  
 210 A misty day at Field  
 211 Mount Stephen House, Field  
 502 Emerald Peak and Glacier, near Field  
 503 From Camp, east end of Emerald Lake, Field

504	Mt. Burgess, from Camp, Emerald Lake,	229
505	Head of Emerald Lake, Field [Field	
499	Leanchoil Mountains	230
498	The Chancellor, Leanchoil	1218
500	Leanchoil Mountains, from west	1219
501	Leanchoil Mountains and Wapta River	1220
215	Canon Columbia River, west of Donald	1221
506	Hermit Range, from Roger's Pass, Selkirk Mountains	1222 1223
507	Hermit Peaks, from west of Rogers Pass	
508	Asulkan Glacier, from Snow Shed 18, near Glacier	1224 1225
216	Glacier, from Platform	1226
217	Hermit Range, from Glacier	1227
218	Albert Canon	1228
219	Head of Albert Canon	
784	Salmon River Bridge, near North Bend	1229
509	Fraser Canon at Spuzzum	
510	Fraser Canon at Spuzzum	1230
221	Siwash Bluff, 3 miles above Yale, Fraser Canon	1231
222	Yale Pass, Fraser Canon	
223	Yale Pass, Fraser Canon	
220	Hope Peaks, on Fraser River	
511	Big Cedar, Stanley Park, Vancouver	
512	Great Hollow Cedar, Stanley Park, Van- couver	
513	Cedar and Pine Trees, Stanley Park, Van- couver	231 232
224	Promenade Deck, SS. Empress of Japan	234
225	Promenade Deck, SS. Empress of Japan	235
226	Saloon, SS. Empress of Japan	236
227	Library, SS. Empress of Japan	237
228	Big Trees, Stanley Park, Vancouver, (Up- right)	238 1232

Size

- ld Lake, [Field] 229 Big Trees, Moss and Ferns, Stanley Park, Vancouver
- 230 Big Cedar, Stanley Park, Vancouver
- 1218 Elko Falls, Elko, Crow's Nest Pass
- 1219 From East Elko Crow's Nest Pass
- ver 1220 Sheep Mt'n., from Elko, Crow's Nest Pass
- ald 1221 Elk River Valley, Elko, Crow's Nest Pass
- , Selkirk 1222 Rockies, from Cranbrook, Crow's Nest Pass
- 1223 From Track, East of Cranbrook, Crow's Nest Pass
- Pass 1224 Moyie Lake, Crow's Nest Pass
- 18, near 1225 Moyie Lake, from Track, Crow's Nest Pass
- 1226 Moyie Lake Outlet, Crow's Nest Pass
- 1227 West of Moyie City, Crow's Nest Pass
- 1228 Duck Lake, near Kootenay Landing Crow's Nest Pass
- end 1229 Duck Lake, towards Kootenay Landing Crow's Nest Pass
- , Fraser 1230 Duck Lake, from East, Crow's Nest Pass
- 1231 At Duck Lake, Crow's Nest Pass

### PANORAMIC VIEWS.

Size 15¼ x 14 inches, Unmounted. \$4.50

“ “ “ Mounted. \$5.50

- k, Van- 231 Brandon and Assinboine Valley
- rk, Van- 232 Brandon, from Experimental Farm
- pan 234 Bow Valley and Cascade Mt., from Cave
- pan 235 Banff Hotel, Valley of Spray, etc.
- 236 Field, B.C.
- 237 Vancouver, B.C.
- er, (Up- 238 Victoria, B.C.
- 1232 Winnipeg, from Court House

- 1233 Winnipeg East, from Court House  
 1234 Rossland, B.C.  
 1235 Trail, B.C.  
 1236 Telson, B.C.  
 1237 Moyie Lake, Crow's Nest Pass  
 1238 Duck Lake, Crow's Nest Pass  
 1239 St. John, N.B.

**Size, 20 x 48 inches.**

- 548 Quebec, from Lower Town  
 547 Quebec, from Levis  
 784½ Montreal, from Mount Royal  
 549 Parliament Buildings, Ottawa  
 550 Ottawa, from Nepean Point  
 551 Towards the Chaudiere, west from Parlia-  
 ment Buildings  
 522 Winnipeg, from City Hall, east  
 523 Winnipeg and City Hall  
 524 Calgary from South, Alberta  
 525 Calgary from North, Alberta  
 526 Calgary and Bow River, Alberta  
 527 Canmore, Three Sisters, White Man's Pass,  
 etc., Alberta  
 530 Rundle Mountain and Bow Valley, Rocky  
 Mountain Park  
 785 Back of Rundle, Bow Valley and Fairholm  
 Range, from Park Road  
 786 Cascade, Squaw Mountains, Main Range,  
 etc., from Tunnel Mountain  
 529 Bow Valley, West from Tunnel Mountain  
 787 From Pavilion, C.P.R. Hotel, Banff down  
 Bow Valley, etc.  
 528 Mount Edith, Rocky Mountain Park, Banff

788  
531

532

533

534

535

536

537

538

539

540

541

542

543

544

545

546



- 788 Vermillion Pass, four miles east of Laggan  
 531 Mount Stephen and Field Peak, Kicking Horse Pass  
 532 Mount Stephen and Field Peak, Kicking Horse Pass  
 533 Leancoil Mountains, from West, B.C.  
 534 Leancoil Mountains, B.C.  
 535 Roger's Pass and Hermit Glacier  
 536 Great Glacier of the Selkirks, B.C.  
 537 Glacier Hotel and Great Glacier, from Station  
 538 The Loops, near Glacier, Selkirk Mountains  
 539 Illicilliwaet Valley. from near great Glacier, B.C.  
 540 Vernon, B.C.  
 541 Lytton, B.C.  
 542 Vancouver, B.C.  
 543 Vancouver, from Stanley Park  
 544 Vancouver, B.C., from roof of C.P.R. Building  
 545 Vancouver, B.C., from roof of C.P.R. Building  
 546 Vancouver, from Mt. Pleasant

Parlia-

's Pass,

, Rocky

airholm

Range,

tain  
down

, Banff

