

Wissler  
Family  
Record





# The Wissler Family Record

BEING A BRIEF ACCOUNT OF  
ANDREW WISSLER'S<sup>2</sup>  
BRANCH OF

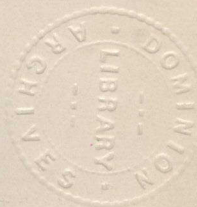
## The Wissler Family

IN THE  
UNITED STATES OF AMERICA AND CANADA

BY  
HENRY WISSLER  
ELORA, ONTARIO, CANADA



The Old Wissler Homestead, built about 1750.  
Residence of Levi H. Wissler.<sup>5</sup>



TORONTO  
THE BRYANT PRESS, LIMITED  
1904

Elora, Ontario, Canada, Nov. 2na, 1903.

To the descendants of Andrew Wissler<sup>2</sup> and his wife  
Anna Magdalena Groff.

My dear Relatives :

In presenting to you our Family Record there are a few observations and explanations which should be made. This is not a complete Record of the Wissler family in the United States and Canada. Tradition says that Jacob Wissler, who came from Switzerland about 1720, had several children, but I have been unable to discover any of his descendants except those included in this record. In the official list of immigrants, published by the government of Pennsylvania, the following Wisslers are mentioned: "Ulrich Wissler (Wislaer) in 1735, Heinrich Wissler in 1737, Hans Wissler in 1738, George Wissler in 1742, Nicholas Wissler, Johann Mücke' Wissler and Johann Casper Wissler in 1752, Ulrich Wissler in 1765." I have not had either the time or means to search out the history of the Wissler Family beyond what is contained in this Record, but leave that to some other person. I shall be pleased to hear from any member of the Wissler Family, whether named in this book or not, and to assist in any way in my power in prosecuting such research. I cordially invite any and every member of the family to send me a record of any births, marriages and deaths or other items of interest which may occur in the family and I

*shall keep a record of all such. It may be that at some future time I may have time and means to publish a complete history of the Wissler Family in the United States and Canada. I have tried to make this Record, as far as it goes, correct, but there are probably some errors. I hope that anyone detecting any errors will report them to me. I desire to thank all those who have assisted me in any way by sending me the information and pictures contained in this book, but especially I wish to thank cousin John B. Wissler who gave me the first start, cousin Aaron B. Wissler, who had collected a considerable amount of information and allowed me to copy from his note book, cousin Benjamin Wissler and cousin Levi Hess Wissler, for the great assistance they so willingly gave me.*

*Yours sincerely,*

*HENRY WISSLER.*





## The Wissler Family Record



At the time of the Reformation in the sixteenth century a large proportion of the people of Central Europe and particularly of the Valley of the Rhine became Protestants. About the year 1537 the Mennonite Church, a sect similar in many respects to the English Quakers and which might be known as the German Quakers, was founded in Southern Germany by Menno Simon. After the Reformation there was a strong reaction towards Roman Catholicism, and for over one hundred years, during the seventeenth and early part of the eighteenth centuries, Central Europe and the Rhine Valley were the scene of almost continuous warfare and bloodshed. The rival armies marched hither and thither over the land leaving a trail of blood and utter desolation wherever they went, so that the inhabitants were reduced to the most extreme poverty. The Mennonites were persecuted on all hands and deprived of their civil and religious liberty. At length, in the latter part of the seventeenth and early part of the eighteenth centuries, by the great wars of William of Orange and the famous victories of the Duke of Marlborough, England became known to these people as a land of light and liberty. In the seventeenth century the Crown of England had granted to William Penn, the great leader of the English Quakers, a large tract of land in North America now known as the State of Pennsylvania, where he and his co-religionists were permitted to settle and worship God according to the dictates of their own consciences. In the early part of the eighteenth century advertisements were scattered broadcast throughout the Rhine Valley, by the agents of William

Penn, inviting the down-trodden and persecuted Mennonites and other Protestants to emigrate and settle in Pennsylvania, where they could have abundance of good land and were guaranteed full civil and religious liberty. In the year 1708 the stream of emigration began to flow from the Valley of the Rhine towards Pennsylvania, and continued in great volume throughout the rest of the eighteenth century.

Amongst these emigrants, about the year 1720, Jacob Wissler,<sup>1</sup> a German Mennonite and his wife, Magdalena, immediately after their marriage, set out from Switzerland, travelled down the Rhine to the port of Rotterdam, and there took ship for Philadelphia. Shortly after sailing their vessel was overtaken by a man-of-war. Jacob Wissler, with the other able-bodied men on board, was impressed into the navy, and the rest of those on the boat were sent on to Philadelphia. When Magdalena reached Philadelphia she took service with a farmer in the neighboring village of Germantown to await the coming of her husband. As soon as his term of service in the navy had expired, Jacob set out in search of his wife, and came to Philadelphia. He had a presentiment that he would meet his wife and set out at once from the landing, along the road for Germantown. Wonderful to relate he met her on the road carrying two pails of milk to Philadelphia for her employer. He took service for a time with a farmer in that locality, but subsequently they moved farther inland and settled on the Brandywine, in Chester county, Pa., where they passed the rest of their lives. They had several children, but the writer has heard the name of only one, namely, Andrew Wissler.<sup>2</sup> Tradition says that in 1783 or 1784 Andrew took his little son Jacob down to the Brandywine to see his aged mother, who had come from Germany about sixty-four years earlier. She was then stricken with infirmity, blindness and old age and was bed-ridden. Being anxious to know what her little grandson was like, when he was brought to her bedside, she ran her hand over his face and form, and exclaimed, "This is a pretty boy." "This incident so impressed Jacob" that he remembered it ever afterwards.

Andrew Wissler,<sup>2</sup> son of of Jacob Wissler<sup>1</sup> and his wife, Magdalena, was born about the year 1735, and led by that peculiar fate which so often directs the aims and purposes of man, removed to Lancaster County, Pa., where he entered the service of John Groff, an extensive farmer on the west bank of Middle Creek, near what is now known as Wissler's Mill, in Clay Township. Here he was made the more welcome as Mrs. John Groff's (née Anna Mary Shenk), mother's maiden name was Wissler,

John Jacob Groff had taken up the farm which he called "Graafsburg," containing 202 acres, more or less, about the year 1724 and settled there with his wife Hannah, chiefly because of a splendid boiling spring of fresh water which here bubbles out of the ground and flows into Middle Creek. Close to the spring on rising ground he built a log house having one end of the stone foundation in the waters of Middle Creek. It is said that every morning throughout the year, he went down the steps from the house to the spring and bathed his face and his head, with its long flowing locks, in the clear cold water of the spring. He died on the 20th day of October, 1749, leaving him surviving, Hannah his widow and three children, John, Jacob and Mary who were all born there, and leaving an estate which with the farm, was appraised at £331.1.6. By deed dated the 7th day of December, 1750, Hannah Groff, Jacob Groff, Mary Schonauer and her husband Abraham Schonauer, having received their respective shares, conveyed all their interest in the farm and estate of John Jacob Groff to John Groff the eldest son. This deed is registered in the Registry Office at Philadelphia in Book 12L., page 124, on the 31st day of July, 1765, and the original, written on parchment, is now in the possession of Levi Hess Wissler,<sup>3</sup> the present owner and occupant of the lands.

On the first page of a New Testament which belonged to John Groff and which is now in the possession of Aaron B. Wissler, at Brunnerville, Pa., the following is written in German text in the handwriting of John Groff :



"Allein auf Gott setz dein Vertrauen  
 Auf Mensch Hilfe solst du nicht bauen  
 Allein der glauben sonst kein Glaube mehr  
 Guter Weg: Wer sich verläst auf Jesum Christ  
 Dem wird der Himmel werden  
 Gott allein die Ehr und keinem Menschen mehr  
 Dieses Büchlein gehoret mir, "Hans Groff."  
 Wohnhaft und geburdig an Middel Grieg  
 Geschrieben in diesem Jahr 1751, den 17 Hornung."

John Groff built a large two story stone dwelling house a few feet farther up the hill from the west corner of the old log house. The stone house still remains and is now occupied by Levi Hess Wissler,<sup>5</sup> but the old log house has been gone for some years, the stone foundation however being yet visible. On the 9th day of January, 1767, Andrew Wissler<sup>2</sup> was married to Anna Magdalena Groff, the only child of John Groff, and the following is a translation of an entry in an old German Bible now in the possession of John Hess Wissler<sup>3</sup>:

"Dated January 9th, 1767.

Andrew Wissler and Anna Magdalena Groff were united in the bonds of holy matrimony, Michael Kaufmann, Preacher. Her parents were John Groff and his wedded wife Anna Mary Groff, and his parents were Jacob Wissler and Magdalena Wissler."

By deed or Patent, dated the 16th day of September, 1767, and registered in the Registry Office at Philadelphia on the 21st day of September, 1767, in Patent Book A, Vol. 10., after reciting the agreement to sell said lands to John Jacob Groff (therein Graaf) dated the eleventh day of January, A.D. 1733, Thomas Penn and Richard Penn granted, conveyed and confirmed said lands called Graafsburg to John Groff therein called Graaf. Which patent on parchment is now in the possession of Levi Hess Wissler.<sup>5</sup> John Groff died about 1798, first having made his last will bearing date the 19th day of August, A.D. 1798 and admitted to probate on the 24th day of April, 1800, by which he devised all his property to Andrew Wissler and his wife Magdalena Wissler, as joint tenants. Andrew Wissler<sup>2</sup> and his wife Magdalena had three children, John Wissler<sup>3</sup>, born on the fifteenth day of July, 1771,

Jacob, born in 1775, died in infancy, and Jacob Wissler,<sup>3</sup> born on the 12th day of November, 1776, so called at the urgent request of his elder brother John<sup>2</sup> to take the place of the baby Jacob who had died.

By deed dated the fifteenth day of January 1802, after reciting the will of John Groff, Andrew Wissler<sup>2</sup> and his wife Magdalena conveyed said lands to John Eby, and the following day by deed John Eby conveyed the same lands to Andrew Wissler, which deeds are registered in the Registry Office at Lancaster, and in the former deed Andrew Wissler, signs his name in German "Andreas Wiessler."

We have been unable to find out the exact date of the death of Andrew Wissler, his wife or son John. Andrew Wissler died, first having made his will dated the 19th day of March, 1802, and admitted to probate on the 6th day of June, 1804 by which will be devised all his property including Graafsburg to his sons John<sup>3</sup> and Jacob,<sup>3</sup> and to his wife a dower in the lands and £10 to Andrew.<sup>4</sup>

On the 15th day of April, 1806, John and Jacob Wissler bought from one Haack a farm at the South-East of the homestead, containing about 105 acres which was intended for John, but as he died unmarried shortly after, all the property came to his brother Jacob Wissler.<sup>5</sup>

John Groff and his wife, Andrew Wissler<sup>2</sup> and his wife, and John Wissler,<sup>3</sup> are buried in Erb's Graveyard about 2½ miles east of Brunnerville, Pa. They were strict Mennonites, and being strongly opposed to the vanities of this world, they expressly forbade the erection of tombstones over their graves, so there is no mark to show the spot where they are buried. The place of their burial was pointed out to Aaron B. Wissler, over fifty years ago by two old men who were present at the burial. The spot indicated was on an elevated knoll about midway between the northern and southern limits of the graveyard and about one-third from the eastern limit.

Jacob Wissler<sup>3</sup> the youngest of son Andrew Wissler<sup>2</sup> and his wife Anna Magdalena Groff was born on the 12th day of November, 1776 on the old Groff homestead on the west bank of Middle Creek in Clay then part of Warwick Township, Lancaster County, Pennsylvania, and grew to

manhood on the same farm. On the 25th day of March, A.D. 1800, he married Anna Eby,<sup>1</sup> daughter of Christian Eby<sup>3</sup> and his wife Catherine Bricker. They had a family of ten children, namely, Andrew,<sup>4</sup> born March 11th, 1801; Jacob,<sup>4</sup> born April 10th, 1803; Christian,<sup>4</sup> born January 14th, 1805; Magdalena,<sup>4</sup> born February 23rd, 1807; Ezra,<sup>4</sup> born May 6th, 1809; John,<sup>4</sup> born October 31st, 1810; Catherine,<sup>4</sup> born November 10th, 1812; Mary,<sup>4</sup> born February 21st, 1815; Levi,<sup>4</sup> born January 3rd, 1817; Sem, born March 21st, 1819. He resided all his life on the same farm.

At the time of the revolution which ended in the formation of the United States of America, the Six Nation Indians espoused the cause of the mother country and at the close of the war were removed to Upper Canada where they were granted by the Crown in return for their loyalty a strip of land six miles in width on each side of the Grand River and extending from its source to its mouth, a distance of upwards of one hundred miles. This land, except the portion reserved for the personal use of the Indians, has been, from time to time, sold to private parties as required for settlement and the purchase money kept in trust for the benefit of the Indians. Of this land the Crown on February 5th, 1798, sold and granted Block No. 2., containing 94,012 acres, now forming the Township of Waterloo in the County of Waterloo and Province of Ontario to Messrs. Beasley, Wilson and Rosseau, they giving back a mortgage for a large part of the purchase money to trustees for the benefit of the Indians. Beasley at once bought the interest of his partners in the land and proceeded to sell the land to settlers then coming in large numbers from Pennsylvania and elsewhere, without mentioning the Indian claim. After these settlers had paid their money they discovered the prior mortgage and were threatened with foreclosure and ruin as they were unable to pay the mortgage.

As a last resort they sent a deputation to their relatives and co-religionists in Pennsylvania to seek for aid. At a meeting held in Lancaster County, Pa., to hear the delegates, Jacob Wissler<sup>3</sup> was present and, with others, urged the granting of assistance. As a result of the meeting, what is known as the German Company was formed. The



unsold portion of the Township of Waterloo, containing sixty-thousand acres of land, was bought from Beasley, the conveyance of the land taken in the names of Daniel Erb and Jacob Erb by deed dated the 29th day of June, 1802, and the Indian mortgage was paid off. Jacob Wissler<sup>3</sup> advanced £1,175, 6s. 8d. currency. and received therefor as his share of the land, deeds of 7,052 acres of land in the Township of Waterloo, being composed of lots numbers 86, 101, 103, 106, 107, 9, 19, 61, 62, 65, 111, 123, 49, 53, 96, 134, 139, 140 and 157, according to the Registered Plan of the said Township of Waterloo, his deeds bearing date the 20th day of July, A.D. 1805. He gradually sold all the land in smaller parcels, except lots 61 and 62, and realized therefrom a handsome profit. At the time this investment was made he and his brother John had the money on hand with the intention of buying an adjoining farm for John. In 1806 the farm, adjoining the old homestead, containing about 105 acres belonging to one Haack, came into the market for sale and was bought by John and Jacob in their joint names. Shortly after this John Wissler<sup>3</sup> died a bachelor and intestate, and all his property was inherited by Jacob Wissler,<sup>3</sup> his only brother and heir at law. Jacob afterwards added to his homestead by purchasing more land to the east, west and north. He was a very methodical and just man and brought up his family to habits of industry and economy. He gave each of his children the best education to be had in the schools of the neighborhood, and then obliged each to work and earn his own living. As each of his children attained his or her majority he advanced to each a portion which on the average was worth about \$2,650.00. The following is a summary of the portion advanced to each in money or money's worth, the figures being taken from a book in his own handwriting, now in the possession of John B. Wissler,<sup>3</sup> at Brunnerville Pa.:

Andrew Wissler, <sup>4</sup> from 1823 to 1845	\$4,310 78
Jacob Wissler, <sup>4</sup> " 1826 " 1831	2,595 02
Magdalena Wissler, <sup>4</sup> " 1827 " 1846	2,669 71
Christian Wissler, <sup>4</sup> " 1832 " 1834	2,668 85
Ezra Wissler, <sup>4</sup> " 1832 " 1841	2,707 25
John Wissler, <sup>4</sup> " 1832 " 1835	2,666 00
Mary Wissler, <sup>4</sup> " 1837 " 1844	2,645 83
Levi Wissler, <sup>4</sup> " 1838 " 1842	2,650 00
Sem Wissler, <sup>4</sup> May 4th, 1841	2,650 00
	<hr/>
Total of advancements	\$25,563 44
Debts, funeral and testamentary expenses	772 58
Balance distributed at his death	24,219 83
	<hr/>
	\$50,555 85

In 1822 when his eldest son, Andrew,<sup>4</sup> was about to be married, he settled him on the Haack farm. In 1825, when his second son, Jacob,<sup>4</sup> was about to marry, they were on the lookout for a farm for him. Andrew then said there was a farm in Schoeneck Township which suited him better, and that Jacob could have his farm. He then bought the farm in Schoeneck to which Andrew removed, and settled Jacob<sup>4</sup> on the Haack farm. By deed dated the 13th day of March, 1831, he conveyed the Haack farm to his son Jacob.<sup>4</sup> In 1827 his eldest daughter, Magdalena, was married to Jacob Landis, and went to reside on a farm in Ephrata Township. On the 25th day of April, A.D., 1829 his wife, Anna, died. In 1831 he settled his son, Christian<sup>4</sup> on a farm of about 64 acres, across the creek from the old homestead, and by deed dated the 23rd day of April, 1834, conveyed the land to Christian. When his son, Ezra, was married in November, 1831, he retired from active farming and rented the balance of the homestead, containing about 247 acres of land, to Ezra. He, however, continued to reside in the large stone house, while Ezra lived in the old log house for a few years. After two or three years he built a small brick cottage across the road, at a distance of about one hundred yards from his old house. He then moved to his new house, and resided there during the rest of his life. In 1834 his son, John, who had served

his apprenticeship as a tanner in Schoeneck, emigrated to Canada.

He gave John lots 61 and 62 in the Township of Waterloo. His daughter Catherine remained unmarried and kept house for him till he died. In 1837 his daughter Mary married Levi Erb and went to reside on a farm between Lexington and Lititz, which he bought for them, and where they resided until 1845 when they sold out and moved to Canada. In 1837 his son Levi<sup>1</sup> joined John in Canada where they carried on business in partnership. In 1839 his youngest son Sem, attracted by the success of John and Levi, followed them to Canada. In 1839 he gave his son Ezra a deed of the westerly portion of his farm containing about 105 acres, but Ezra continued to work the whole farm as tenant until 1841. About 1840 he made a trip to Canada to settle his affairs there and induce either Levi or Sem to come home and take the old homestead, which he wished to remain in the family. At his urgent request Levi agreed to return home, and in 1841 he conveyed the old homestead containing about 142 acres to Levi, reserving only his little house and the garden around it. He was a firm, energetic man of considerable ability. He is known to have made three separate journeys on horseback to Canada. Although a Mennonite he did not wholly ignore the law of self-defence, and the cane with which he defended himself against the attack of an Indian upon one of his trips is now in the possession of Benjamin Wissler<sup>5</sup>. He was very successful in his business ventures and added largely to his original capital. In his old age he was greatly afflicted with asthma, and for some years prior to his death was on account of it unable to lie on a bed. He died on the 27th day of April, 1853, and is buried beside his wife in the cemetery across the road from the Hammer Creek Mennonite Meeting-house, where a plain marble slab stands at the head of each grave. His sons Christian and Ezra, and his son-in-law, Jacob Landis, were the executors of his will, which was duly proved and registered in the Probate Court for Lancaster County, Pa., on the 19th day of May, 1853, and is entered in Book V, at page 417.



Anna Eby<sup>4</sup>. The Ebys belong to the Celtic race, and during the early part of the Christian Era lived in the northern part of Italy, where they were early converted to Christianity through the labors of the Vaudois and became strict adherents to the Vaudois or Waldensian Church. Being bitterly persecuted by the Church of Rome, about 1560 they fled to Switzerland and finally settled in the Cantons of Berne, Zurich and Lucerne.

During the Protestant Reformation the Mennonite Church was founded in 1537 by Menno Simon, a native of Holland, and amongst those who joined the Mennonites were the Graafs, Ebys, Shanks, Wisslers and others. In 1683 one Jacob Eby was ordained a Bishop of the Mennonite Church in Canton Zurich, and by persecution he was driven down the Rhine to the Palatinate.

Theodorus Eby,<sup>1</sup> son of Bishop Jacob Eby, was born in Canton Zurich, Switzerland, on the 25th day of April, 1663. On account of religious persecutions he left Switzerland and settled in the Palatinate in 1704 where he resided until 1715, when, being still persecuted and induced by the agents of William Penn, he in company with other co-religionists left for Philadelphia and settled in August 1715 at a place now called Rolland's Mill, near the line between Earl and Leacock Townships in Lancaster County, Pennsylvania, where he resided until his death in September, 1737. He had six children, Peter,<sup>2</sup> Hannes,<sup>2</sup> Jacob,<sup>2</sup> Christian,<sup>2</sup> David<sup>2</sup> and Elizabeth.<sup>2</sup>

Christian Eby,<sup>2</sup> son of Theodorus, was born in Switzerland February 12th, 1698. He married Elizabeth Mayer, a member of one of the families that emigrated with Theodorus.<sup>1</sup> Christian<sup>2</sup> and his wife settled on Hammer Creek in Elizabeth Township, Lancaster Co., Pa., about three miles north of Lititz. Here he died September, 1756, and his wife died December 12th 1787. They had a family of ten children, Christian,<sup>3</sup> John,<sup>3</sup> Barbara,<sup>3</sup> Peter,<sup>3</sup> Anna,<sup>3</sup> Andrew,<sup>3</sup> George,<sup>3</sup> Elizabeth,<sup>3</sup> Samuel,<sup>3</sup> Michael.<sup>3</sup>

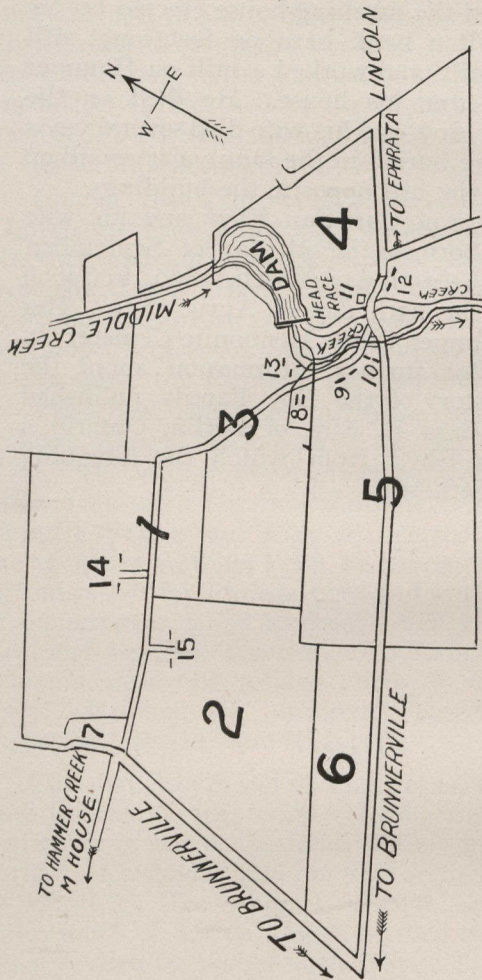
Christian Eby,<sup>3</sup> the eldest son of Christian Eby,<sup>2</sup> was born February 22nd, 1734, retained the homestead on Hammer Creek and married Catherine Bricker by whom he had twelve children, Elizabeth,<sup>4</sup> Christian,<sup>4</sup> Peter,<sup>4</sup> John,<sup>4</sup>

Andrew,<sup>4</sup> Catherine,<sup>4</sup> Barbara,<sup>4</sup> Anna,<sup>4</sup> George,<sup>4</sup> Maria,<sup>4</sup> Benjamin,<sup>4</sup> and Maria.<sup>4</sup>

He greatly improved the dwelling-house erected by his father in 1754 and built a bank barn 99 feet long, still standing. He also built and worked a mill on Hammer Creek a short distance from his house. He died on the 14th day of September, 1807, and his wife died several years later. Both of them are buried in the family graveyard on the farm on the top of the hill opposite the buildings.

Anna Eby,<sup>4</sup> daughter of Christian Eby<sup>3</sup> and his wife Catherine Bicker, was born on the 9th day of September, 1777, was married on the 25th day March, 1800, to Jacob Wissler<sup>3</sup> and died on the 25th day of April, 1829. Her body lies buried in Hammer Creek Mennonite Cemetery.

The writer refers for further information about the Eby Family to the History of the Eby Family published in 1889 by the late Ezra E. Eby, of Berlin, Ontario, a grandson of Benjamin Eby,<sup>4</sup> from which the foregoing information has been gathered.



1. Jacob Brubacher Wissler's<sup>6</sup> farm, 65 acres 50 perches, part of Levi Wissler's<sup>4</sup> farm.
2. Part of Ezra Wissler's<sup>4</sup> farm now owned by Jacob Bomberger Wissler, 85 acres.
3. Old Homestead part of Levi Wissler's<sup>4</sup> farm, now owned by Levi H. Wissler's<sup>5</sup>.
4. Christian Wissler's<sup>4</sup> farm 64 acres 2 perches, now owned by Benjamin Wissler's<sup>5</sup>.
5. The Haack farm, Jacob Wissler's<sup>4</sup> farm, now owned by Joseph B. Wissler's<sup>6</sup>.
6. Part of Ezra Wissler's<sup>4</sup> farm, 20 acres, now owned by Brubacher.
7. 1 acre 17 perches, sold from Levi Wissler's<sup>4</sup> farm, owned by B. H. Erb.
8. House built by Jacob Wissler's<sup>3</sup>, where he died, then owned by Catherine,<sup>4</sup> now owned by Levi H. Wissler's<sup>5</sup>.
9. House built by Jacob Wissler's<sup>4</sup> to retire to, now used as tenant house.
10. House and barn for Haack farm now occupied by Joseph B. Wissler's<sup>6</sup>.
11. Christian Wissler's<sup>4</sup> mill now owned by Benjamin Wissler's<sup>5</sup>.
12. Christian Wissler's<sup>4</sup> residence now occupied by Benjamin Wissler's<sup>5</sup>.
13. The old homestead a two story stone residence built by John Groff about 1750 now owned and occupied by Levi H. Wissler's<sup>5</sup>.
14. House and barn on Jacob B. Wissler's<sup>6</sup> farm.
15. House and barn on Ezra Wissler's<sup>4</sup> farm built in 1839 and 1840.



Jacob Wissler<sup>1</sup> and wife Magdalena  
emigrated from Switzerland 1720

- Shenk<sup>1</sup>  
m  
-Wissler

Andrew Wissler,<sup>2</sup> 1735-1802  
m. 1767  
Anna Magdalena Groff,<sup>3</sup> 1751-1806

Anna Mary<sup>2</sup>  
m  
John Groff

John,<sup>3</sup> 1771-1806  
died a bachelor

Jacob,<sup>3</sup> 1775  
died in infancy

Jacob,<sup>3</sup> 1776-1853  
m 1800  
Anna Eby,<sup>4</sup> 1777-1829

Andrew,<sup>4</sup> 1801-76  
m  
Sarah Shirk, 1801-77

Jacob,<sup>4</sup> 1803-55  
m  
Barbara Bomberger  
1803-72

Christian,<sup>4</sup> 1803-78  
m  
Anna He<sup>4</sup>stetter  
1807-95

Magdalena,<sup>4</sup> 1807-53  
m  
Jacob Landis, 1803-76

Andrew S.<sup>5</sup>  
Anna<sup>5</sup>  
Jacob S.<sup>5</sup>  
Maria<sup>5</sup>  
Sarah<sup>5</sup>  
Elias S.<sup>5</sup>  
Elizabeth<sup>5</sup>  
Lucy<sup>5</sup>

Anna B.<sup>5</sup>  
Jacob B.<sup>5</sup>  
Martha B.<sup>5</sup>  
Mary B.<sup>5</sup>  
Levi B.<sup>5</sup>

Elizabeth H.<sup>5</sup>  
Benjamin<sup>5</sup>  
Jacob H.<sup>5</sup>  
Mary Anna

Elizabeth<sup>5</sup>  
Jacob W.<sup>5</sup>  
Ezra<sup>5</sup>  
Mary Ann<sup>5</sup>

Ezra,<sup>4</sup> 1809-91  
m  
Mary Bauman  
1808-86

John,<sup>4</sup> 1810-70  
m  
Hannah Heiser  
1818-88

Catherine,<sup>4</sup>  
1812-65

Mary,<sup>4</sup> 1815-72  
m  
Levi Erb  
1811-93

Levi,<sup>4</sup> 1817-81  
m  
Fanny Hess  
1827-95

Sem<sup>4</sup> 1819-65  
m  
Jane Robertson  
b 1826

Aaron B.<sup>5</sup>  
John B.<sup>5</sup>

Franklin H.<sup>5</sup>  
Jacob<sup>5</sup>  
Levi<sup>5</sup>  
Aaron<sup>5</sup>  
Hannah<sup>5</sup>  
Angeline<sup>5</sup>

Mary Anna<sup>5</sup>  
Elizabeth<sup>5</sup>

Anna Hess<sup>5</sup>  
Barbara H.<sup>5</sup>  
John H.<sup>5</sup>  
Levi H.<sup>5</sup>  
Jacob H.<sup>5</sup>  
Christian H.<sup>5</sup>  
Fanny H.<sup>5</sup>  
Catherine H.  
Mary H.<sup>5</sup>  
Samuel H.<sup>5</sup>  
Henry H.<sup>5</sup>  
Hannah H.<sup>5</sup>

John R.<sup>5</sup>  
Ezra<sup>5</sup>  
Mary Anna<sup>5</sup>  
Elizabeth<sup>5</sup>  
Levi Erb<sup>5</sup>  
Henry<sup>5</sup>  
Sem<sup>5</sup>

John Jacob Groff<sup>1</sup> and wife Hannah  
d 1749  
settled on old homestead about 1721

John,<sup>2</sup> 1724-1798  
m

Jacob<sup>2</sup>

Mary<sup>2</sup>  
m

Anna Mary Shenk

A. Schonauer

Anna Magdalena,<sup>2</sup> 1751-1806  
m 1767

Andrew Wissler<sup>2</sup>

Bishop Jacob Eby

Theodorus<sup>1</sup>

Peter    Hannes    Jacob    Christian<sup>2</sup>    David

Christian  
1731-1807

John    Barbara    Peter    Anna    Andrew    George    Elizabeth    Samuel

Catherine Bricker

Michael

Elizabeth    Christian    Peter    John    Andrew    Catherine    Barbara    Anna<sup>4</sup>    George    Maria  
Benjamin    Maria

1777-1829

m  
Jacob Wissler<sup>5</sup>



- |   |  |
|---|--|
| 1. Andrew Wissler, <sup>4</sup>                 | 2. Mrs. Andrew Wissler, <sup>4</sup>                                 |
| 3. Andrew S. Wissler, <sup>5</sup>              | 4. Mrs. Andrew Whisler (Anna Wissler <sup>5</sup> ).                 |
| 5. Mrs. Cornwell (Maria Wissler <sup>5</sup> ). | 6. Mrs. Billhart (Sarah Wissler <sup>5</sup> ).                      |
| 7. Elias Wissler, <sup>5</sup>                  | 8. Mrs. Schauten (Elizabeth Wissler <sup>5</sup> ).                  |
| 9. Ezra K. Wissler, <sup>6</sup>                | 10. William B. Wissler, <sup>6</sup>                                 |
| 11. Jacob S. Wissler, <sup>6</sup>              | 12. Mrs. Jacob S. Wissler <sup>6</sup> (Orie Whisler <sup>6</sup> ). |
| 13. Charles Fremont Wissler, <sup>6</sup>       | 14. Jacob S. Wissler, <sup>6</sup>                                   |

## ANDREW WISSLER<sup>4</sup> AND FAMILY.

Andrew Wissler,<sup>4</sup> son of Jacob Wissler<sup>3</sup> and his wife Anna Eby, was born on the 11th day of March, 1801, on the old Groff homestead, on the west bank of Middle Creek, in what is now Clay Township, Lancaster County, Pennsylvania. He grew to manhood on the same farm and received his education at the common schools in the neighborhood. He was married on the 12th day of September, 1822, to Sarah Shirk, born November 26th, 1801, by whom he had the following children, Andrew S.,<sup>5</sup> born September 22nd, 1823; Anna,<sup>5</sup> born February 24th, 1825; Jacob S.,<sup>5</sup> born June 30th, 1827; Maria,<sup>5</sup> born May 7th, 1830; Sarah,<sup>5</sup> born April 19th, 1833; Elias S.,<sup>5</sup> born September 14th, 1835; Elizabeth,<sup>5</sup> born December 16th, 1840; and Lucy,<sup>5</sup> born July 26th, 1842. In 1822 he rented from his father, the farm adjoining the old homestead which had been bought from one Haack in 1806 and continued to occupy and work it for three seasons. In 1825 he purchased a farm in Shoeneck to which he removed and where he resided for the next twenty years. He also carried on a general store in Shoeneck in addition to his farm. In 1845 he sold out his property and moved with his family to Medina County, Ohio, where he settled for a few years. About 1853 he moved to Kalamazoo, Michigan, where he lived until 1856 when he moved to Greenville, Michigan, where he was postmaster for five years. He then settled on a farm near Greenville, in Montcalm County, where he spent the remainder of his life. He was afflicted with paralysis for a number of years and was cared for by his son Elias. He died in December, 1876, and was buried in Sterns Cemetery about four miles north of Greenville, Michigan. His wife died in July, 1877 and was buried by his side.

Andrew Shirk Wissler,<sup>5</sup> son of Andrew Wissler<sup>4</sup> and his wife Sarah Shirk, was born on the 22nd day of September, 1823, on the Haack farm on the west bank of Middle Creek, Lancaster County, Pa. He went with his

parents to Shoeneck where he grew up and in 1845 he accompanied them to Ohio, and has since resided there. He settled on a farm in Medina County near Sterling, Ohio. He was married to Barbara Baker, by whom he had the following children: Mary,<sup>6</sup> born October 30th, 1850. Sarah,<sup>6</sup> born November 22nd, 1851, died August 15th, 1869. Elizabeth,<sup>6</sup> born March 15th, 1854. Fremont,<sup>6</sup> born October 24th, 1856. Jacob,<sup>6</sup> born December 21st, 1861. Minnie,<sup>6</sup> born May 20th, 1864. William,<sup>6</sup> born January 1st, 1867. He prospered and now resides with his son Jacob on the farm, his address being Seville, Medina Co., Ohio. R.F.D.2.

(1) Mary Wissler,<sup>6</sup> daughter of Andrew S. Wissler<sup>5</sup> and his wife Barbara Baker, was born on the 30th day of October, 1850. She was married to Thomas Longsdorf, a neighboring farmer, to whom she has three children. Minnie,<sup>7</sup> married to Frank Whitmore, and Thomas<sup>7</sup> and Charles<sup>7</sup> who are unmarried at home.

(2) Elizabeth Wissler,<sup>6</sup> daughter of Andrew S. Wissler<sup>5</sup> and his wife Barbara Baker, was born on the 15th day of March, 1854. She was married to Samuel Longsdorf, a merchant now residing in Sterling, Ohio. She had no children.

(3) Charles Fremont Wissler,<sup>6</sup> son of Andrew S. Wissler<sup>5</sup> and his wife Barbara Baker, was born on the 24th day of October, 1856, near Smithville, Wayne Co., Ohio. He was married to Bertha Fisher of Orrville, Wayne Co., Ohio, but has no children. He is a grocer and postmaster at Sterling, Ohio.

(4) Jacob Wissler,<sup>6</sup> son of Andrew S. Wissler<sup>5</sup> and his wife Barbara Baker, was born on the 21st day of December, 1861. He was married to Emma Galloway, but has no children. He resides on the farm at Seville, Medina Co., Ohio, and his father lives with him.

(5) Minnie Wissler,<sup>6</sup> daughter of Andrew S. Wissler and his wife Barbara Baker, born May 20th, 1864, was married to Ernest Earl, a farmer residing at Sterling, Ohio, to whom she has one child, Howard,<sup>7</sup> born May 22nd, 1896.

(6) William Wissler,<sup>6</sup> son of Andrew S. Wissler<sup>5</sup> and his wife Barbara, was born on the 1st day of January, 1867, near Smithville, Wayne Co., Ohio. He was married to Isa Fortney, by whom he has one child, Merle C.,<sup>7</sup> born

April 8th, 1888. He resides in Sterling, Ohio, where he has a livery.

Anna Wissler,<sup>5</sup> daughter of Andrew Wissler<sup>4</sup> and his wife Sarah Shirk, was born on the 25th day of February, 1826, in Shoeneck, Lancaster Co., Pa., where she grew up. In 1845 she went with her parents to Ohio, where on the 27th day of November, 1845, she was married to Andrew Whisler, a farmer in Massillon, Ohio, who was born in Canton, Ohio, on the 31st day of October, 1820. About 1855 they moved to Michigan, where they settled on a farm near Greenville. She died in August, 1891, at Entrica, Michigan, and was buried there. Her husband resides at Lowell, Michigan. She had ten children, as follows: The eldest two died in infancy. (3) Parmelia,<sup>6</sup> born June 2nd, 1852, at Canton, Ohio, resides with and is housekeeper for her father. (4) Samantha,<sup>6</sup> born March 29th, 1854. (5) Orie,<sup>6</sup> born July 29th, 1856. (6) Loretta,<sup>6</sup> born March 9th, 1858. (7) Viola,<sup>6</sup> born January 13th, 1860. (8) Horace,<sup>6</sup> born September 13th, 1862, at Allegan, Mich., died February 1896, left no children. (9) Manelia,<sup>6</sup> born August 27th, 1865, at Allegan, Mich., died February 1898, at Lowell, Mich., and is buried there. She left no children. (10) The youngest died in infancy.

Samantia Whisler,<sup>6</sup> daughter of Andrew Whisler and his wife Anna Wissler,<sup>5</sup> was born on the 29th day of March, 1854, at Canton, Ohio, and died May, 1876, at Greenville. She was married to E. T. Kent, a farmer in Greenville, to whom she had two children. (1) Edith,<sup>7</sup> born in May, 1873, married in March, 1898, to Maurice Shaw, a farmer residing at Greenville, Montcalm Co., Mich., to whom she has one child, Harold Shaw,<sup>8</sup> born 1899. (2) Anna Kent,<sup>7</sup> born 1874, died in 1889 at Greenville.

Orie Whisler,<sup>6</sup> daughter of Andrew Whisler and his wife Anna Wissler,<sup>5</sup> was born at Allegan, Mich., on the 29th day of July, 1856. She was married on the 17th day of July, 1872, to Charles A. Simpson, of Belleville, Ont., scaler, who died on the 18th day of April, 1887, and to whom she had three children. (1) Charles Herbert Simpson,<sup>7</sup> born September 13th, 1876, in Hart, Mich., is a mail carrier, served two enlistments in Spanish-American war and now resides in Goshen, Indiana. (2) Claudia L.,<sup>7</sup> born

August 9th, 1878, in Thurlew, Ontario, was married on the fifth day of July, 1898, to Landon Houle, a farmer residing at Greenville, Mich., to whom she has one child, Leita,<sup>8</sup> born January 26th, 1899. (3) Grace M.,<sup>7</sup> born January 28th, 1886, is a telephone operator, and resides at Goshen, Indiana. On the 26th day of July, 1898, Orie Whisler Simpson,<sup>6</sup> was married to her cousin, Jacob S. Wissler,<sup>4</sup> a photographer of Canton, Ohio. They now reside at 319 North 2nd St., Goshen, Indiana.

Loretta Whisler,<sup>6</sup> daughter of Andrew Whisler and his wife, Anna Wissler,<sup>5</sup> was born on the 9th day of March, 1858, at Allegan, Mich, and died in February, 1882, at Hart, Mich. She was married in June, 1877, to James Cargill, a farmer at Hart, Mich., (from Guelph, Ont.), to whom she had four children, all born in Hart, Mich., and are teachers there. Oscar,<sup>7</sup> born June, 1878; Laura,<sup>7</sup> born 1880; Ludema,<sup>7</sup> born 1882; Perry,<sup>7</sup> born 1884.

Viola Whisler,<sup>6</sup> daughter of Andrew Whisler and his wife, Anna Wissler,<sup>5</sup> was born on the 13th day of January, 1860, at Allegan, Mich. She was married April 8th, 1878, at Greenville, to Owen Evans, now residing at Lowell, Mich., to whom she has had the following children: Anna,<sup>7</sup> born 1879, is a teacher; Dora,<sup>7</sup> born 1881, died, February, 1897; Grace,<sup>7</sup> born in 1885, is a student.

Jacob S. Wissler,<sup>5</sup> son of Andrew Wissler<sup>4</sup> and his wife, Sarah Shirk, was born on the 30th day of June, 1827, at Schoeneck, in Lancaster County, Pa. He was married in December, 1844, to Leah Keller, a daughter of George Keller, born at Ephrata, Pa., in 1827. He moved with his parents to Ohio in 1845, and worked at his trade as a miller in Canton, Ohio. He had three children, namely: Ezra Keller,<sup>6</sup> born in 1847; Jacob S.,<sup>6</sup> born August 28th, 1851, and twin daughter died in infancy. He died at Canton, Ohio, on the 4th day of December, 1851. His widow afterwards married again and died several years ago.

Ezra Keller Wissler,<sup>6</sup> son of Jacob S. Wissler,<sup>5</sup> and his wife, Leah Keller, was born in 1847 in Canton, Ohio, where he still resides, and is a moulder. He was married to Minnie Sell, of Sturgis, Michigan, by whom he has one child, Elizabeth Wissler.<sup>7</sup>



Jacob S. Wissler,<sup>6</sup> son of Jacob S. Wissler,<sup>5</sup> and his wife, Leah Keller, was born on the 28th day of August, 1851, at Canton, Ohio, where he grew up and became a photographer. He was married first to Philopena Ballinger, by whom he had one child, Catherine Wissler,<sup>7</sup> born July 4th, 1888. On the 26th day of July, 1898 he was married to his cousin, Orie Whisler Simpson.<sup>6</sup>

Maria Wissler,<sup>5</sup> daughter of Andrew Wissler,<sup>5</sup> and his wife, Sarah Shirk, was born on the 17th day of May, 1831, in Shoeneck, Lancaster Co., Pa. She moved with her parents to Ohio where she was married on the 17th day of October, 1851, to Jacob Cornwell, who was born in Lancaster Co., Pa., removed in infancy with his parents to Stark County, where in time he became a miller. In the summer of 1855 they moved to Kalamazoo, Mich., where they resided until 1872 and Mr. Cornwell worked at his trade. In January, 1872 they moved to Cadillac, Michigan, where they still reside. Mr. Cornwell began dealing in groceries, flour, feed and camp supplies. In the fall of 1872 he built a grist mill which was destroyed by fire in July, 1876. In 1876 he built an up-to-date roller mill with a capacity of two hundred barrels a day. He prospered greatly, and the business so increased that to-day, in addition to his mill, he has a wholesale and three retail stores dealing in groceries, flour, feed and supplies. He is assisted in the business by his three sons, the firm name being J. Cornwell & Sons. They have had seven children, as follows: (1) Monroe J.,<sup>6</sup> born January 23rd, 1853, married July, 1901, to Eva Massington. (2) John A.,<sup>6</sup> born August 3rd, 1855, died in March, 1880. (3) Frances M.,<sup>6</sup> born October 12th, 1856, married, January, 1875, William Kilgore, a farmer residing near Kalamazoo, Mich., to whom she has three children--Jane,<sup>7</sup> born May, 1877; Mabel,<sup>7</sup> born October, 1879, and Monroe,<sup>7</sup> born January, 1885. (4) Lizzie M.,<sup>6</sup> born June 10th, 1858, married December, 1877 to J. E. Lalone, and resides in Grand Rapids, Mich. (5) Sarah A.,<sup>6</sup> born Jan. 11th, 1860, married January, 1880, to Henry Ballow, to whom she has had the following children: Maude,<sup>7</sup> born March, 1882; Delos,<sup>7</sup> born January, 1884, died September, 1884; Kate,<sup>7</sup> born May, 1885; Dora,<sup>7</sup> born March, 1889; Henry,<sup>7</sup> born November, 1892;

(6) Willis J.,<sup>6</sup> born January, 23rd, 1862, was married in February, 1891 to Anna Fridle, by whom he has three children — Willis,<sup>7</sup> born July, 1892; Mildred,<sup>7</sup> born August, 1895; Helen,<sup>7</sup> born October, 1896. (7) Franklin E.,<sup>6</sup> born February 5, 1864, was married June 30th, 1882, to Ella Clapperton, by whom he has two children— John,<sup>7</sup> born October, 1889; Jane,<sup>7</sup> born February, 1893.

Sarah Wissler,<sup>5</sup> daughter of Andrew Wissler,<sup>4</sup> and his wife, Sarah Shirk, was born on the 19th day of April, 1833, at Schoeneck, Lancaster Co., Pa. She was married on the 27th day of December, 1846, to Jacob S. Brillhart, of Canton, Ohio, to whom she had four children. John H.,<sup>6</sup> born August 27th, 1850; Andrew J.,<sup>6</sup> born June 28th, 1852; Willis C.,<sup>6</sup> born March 28th, 1858, died November 11th, 1860, and Ella,<sup>6</sup> born July 24th, 1862. They moved to Michigan about 1855, and subsequently to Arkansas where she died on the 15th day of November, 1874, at Augusta. Her husband lives now with his daughter Ella at New Berlin, Stark Co., Ohio.

John H. Brillhart,<sup>6</sup> son of Jacob S. Brillhart and his wife, Sarah Wissler,<sup>5</sup> was born on the 27th day of August, 1850, and is a farmer residing at Tecumseh, Nebraska. He was married at Kendallville, Indiana, on the 3rd day of July, 1870, to Jennie Hiest, by whom he has four children: (1) Arthur L.,<sup>7</sup> born May 17th, 1873, is a teacher and unmarried. (2) Guy L.,<sup>7</sup> born March 4th, 1875, is a dentist, was married April 15th, 1900, and has one child, Irma,<sup>8</sup> born May 29th, 1903. (3) Lee F.,<sup>7</sup> born May 15th, 1877, married March 6th, 1902, is a telegrapher and has one child born July 10th, 1903. (4) Bertha B.,<sup>7</sup> born November 9th, 1882, is a teacher.

Andrew J. Brillhart,<sup>6</sup> son of Jacob S. Brillhart and his wife, Sarah Wissler,<sup>5</sup> was born on the 28th day of June, 1852, and was married on February, 16th, 1887, at Fort Wayne, Indiana, where he is a farmer, to Ida F. Lyle, by whom he has had the following children: Stella E.,<sup>7</sup> born and died January 25th, 1888; Samuel Lyle,<sup>7</sup> born September 5th, 1889; Gertrude Ethel,<sup>7</sup> born July 8th, 1894, died March 11th, 1895.

Ella Brillhart,<sup>6</sup> daughter of Jacob S. Brillhart and his wife, Sarah Wissler,<sup>5</sup> was born at Pent Water, Michigan,

on the 24th day of July, 1862. She was married on the 5th day of April, 1885, to Clayton Carpenter, to whom she has the following children: Nellie E.,<sup>7</sup> born September 21st, 1887; Rhoda A.,<sup>7</sup> born December, 27th, 1890; Clara M.,<sup>7</sup> born August 12th, 1893. They reside at New Berlin, Stark Co., Ohio.

Elias Shirk Wissler,<sup>5</sup> son of Andrew Wissler,<sup>4</sup> and his wife, Sarah Shirk, was born on the 14th day of September, 1835, in Shoeneck, Lancaster Co., Pa. He went with his parents to Ohio and Michigan. He was at Salem, Ontario, for a few years about 1865. He was married, but his wife died some years ago. He and his wife lived on a farm near Greenville, Mich., with his parents and took care of them for many years before their death. He has no children. He resides at Minneapolis with an adopted son, Owen L. Wissler, who is in business there.

Elizabeth Wissler,<sup>5</sup> daughter of Andrew Wissler,<sup>4</sup> and his wife, Sarah Shirk, was born on the 16th day of December, 1840, at Shoeneck, Lancaster Co., Pa. She was married on the 22nd day of March, 1863, to John J. Schouten, a farmer, and resides on a farm near Greenville, Montcalm Co., Michigan. They have had the following children: (1) Nora,<sup>6</sup> born April 7th, 1864, died October, 1866. (2) Maria,<sup>6</sup> born February 25th, 1866, married November 22nd, 1899, to James Barclay and resides in Greenville. (3) Perry,<sup>6</sup> born August 15th, 1867. (4) Orie,<sup>6</sup> born August 31st, 1871, married December 26th, 1894, to John Carlsen, to whom she has one child, Henry,<sup>7</sup> born November 18th, 1897, and resides in Fenwick, Mich. (5) Mary,<sup>6</sup> born September 11th, 1873. (6) Jane,<sup>6</sup> born August 21st, 1877, married March 18th, 1900, to George T. Barclay, resides in Greenville. (7) Jay,<sup>6</sup> born December 7th, 1879.

Lucy Wissler,<sup>5</sup> daughter of Andrew Wissler<sup>4</sup> and his wife, Sarah Shirk, was born on the 26th day of July, 1842, at Schoeneck, Lancaster Co., Pa. She was married in 1867 to Christian Schutt, a native of Mecklenburg-Schwerin, Germany, born on the 2nd day of June, 1842, to whom she has had ten children, all born in Cora, Montcalm Co., Michigan. She resides on a farm at Lakeview, Mich. (1) Herman W. Schutt,<sup>6</sup> born Nov. 19th, 1867, married August 30th, 1896 to Mabel E. Adams, by whom

he has the following children: Christian A. O.,<sup>7</sup> Alma Loraine<sup>7</sup> and Dorlisca Augusta.<sup>7</sup> (2) Elias W. Schutt,<sup>o</sup> born December, 23rd, 1868, married July 1st, 1892, to Ella Mollet, by whom he has two children, Lester C.<sup>7</sup> and Ella May.<sup>7</sup> (3) William C. Schutt,<sup>o</sup> born July 18th, 1870, married July 3rd, 1896 to Anna Martha Katherine Homburg, by whom he has two children, Ruth Elizabeth<sup>7</sup> and Ludwig William Christian.<sup>7</sup> (4) Sarah A. Schutt,<sup>o</sup> born February 27th, 1872, married March 20th, 1889, George L. Clark, to whom she has three children: Elmer L.,<sup>7</sup> LeRoy C.<sup>7</sup> and Leo J.<sup>7</sup> (5) Mary Schutt,<sup>o</sup> born Sept. 3rd, 1873, died February 21st, 1882. (6) Maria Schutt,<sup>o</sup> born January 13th, 1875, died February 12th, 1882. (7) Derana Schutt,<sup>o</sup> born November 23rd, 1876, died July 5th, 1877. (8) Elizabeth Schutt,<sup>o</sup> born May 16th, 1878, died February 6th, 1882. (9) Dewitt Clinton Schutt,<sup>o</sup> born April 1st, 1880, married March 8th, 1899 to Susan Schwartz, by whom he has one child, Marion A.<sup>7</sup>; two children died in infancy. (10) May L. Schutt,<sup>o</sup> born May 15th, 1882.



Andrew Wissler,<sup>1</sup> 1801-1876

m 1822

Sarah Shirk, 1801-1877

Andrew S.<sup>5</sup>  
b 22 Sept., 1821  
m  
Barbara Baker

Anna,<sup>5</sup> 1826-91  
m 1845  
Andrew Whisler  
31 Oct., 1830

Jacob S.<sup>5</sup>  
1827-51  
m 1844  
Leah Keller

Maria<sup>5</sup>  
17 May, 1831  
m 1851  
Jacob Cornwell  
30 Aug., 1830

Sarah<sup>5</sup>  
1833-71  
m 1849  
Jacob S. Brillhart

Elias<sup>5</sup>  
14 Sept., 1825

Elizabeth<sup>5</sup>  
16 Dec., 1840  
m

Lucy<sup>5</sup>  
26 July, 1842  
m

John J. Schouten Christian Schutt

Andrew S.<sup>5</sup>  
b 22 Sept., 1824  
m

Barbara Baker

Mary<sup>6</sup>  
30 Oct., 1830  
m  
Thos. Longsdorf

Elizabeth C.<sup>6</sup>  
15 March, 1834  
m  
S. Longsdorf

Frederic<sup>6</sup>  
24 Oct., 1836  
m  
Bertha Fisher

Jacob S.<sup>6</sup>  
21 Dec., 1861  
m  
Emma Galloway

Minnie<sup>6</sup>  
20 May, 1861  
m  
Ernest Earl

William B.<sup>6</sup>  
1 Jan., 1867  
m  
Isa Fortney

Minnie<sup>7</sup>  
m  
F. Whitmore  
Thomas<sup>7</sup>  
Charles<sup>7</sup>

Howard<sup>7</sup>  
22 May, 1896  
Merle C.<sup>7</sup>  
8 April, 1888

Anna,<sup>5</sup> 1826-91

m 1845

Andrew Whisler

31 Oct., 1830

Permelia<sup>6</sup>  
2 June, 1852

Samantha<sup>6</sup>  
29 March, 1854  
m  
E. T. Kent

Orie<sup>6</sup>  
24 July,  
1856

Loretta<sup>6</sup>  
1858-82  
m 1877

Viola<sup>6</sup>  
13 Jan., 1860  
m 1878

Horace<sup>6</sup>  
1892-96

Mandelia<sup>6</sup>  
1865-98

Edith<sup>7</sup>  
May, 1873  
m  
Anna<sup>7</sup>  
1874-89

Maurice Shaw

Harold<sup>7</sup>  
1899

James Cargill

Oscar<sup>7</sup>  
1878

Laura<sup>7</sup>  
1880

Ludema<sup>7</sup>  
1882

Perry<sup>7</sup>  
1884

Owen Evans

Anna<sup>7</sup>  
1879

Dora<sup>7</sup>  
1881-97

Grace<sup>7</sup>  
1885

Charles A. Simpson  
d 1887

Jacob S. Wissler<sup>6</sup>

Charles H.<sup>7</sup>  
13 Sept., 1876

Claudia J.<sup>7</sup>  
9 Aug., 1878  
m 1898  
Landon Houle

Grace M.<sup>7</sup>  
29 Jan., 1886

Leita<sup>7</sup>  
29 Jan., 1899

Ezra K.<sup>6</sup>  
1847  
m  
Minnie Sell

Elizabeth<sup>7</sup>

Jacob S.<sup>5</sup>  
1847-51  
m 1844  
Leah Keller

Jacob S.<sup>6</sup>  
1851

P. Ballinger  
Catherine<sup>7</sup>  
4 July, 1888

Oric Whisler<sup>6</sup>

Maria<sup>5</sup>  
 17 May, 1831  
 m 1851  
 Jacob Cornwell  
 30 Aug., 1830

Monroe J. <sup>6</sup> 23 Jan., 1856 m 1901 Eva Massinger	John A. <sup>6</sup> 1855-86	Frances M. <sup>6</sup> 12 Oct., 1856 m 1875 Wm. Kilgore	Lizzie M. <sup>6</sup> 10 June, 1858 m 1877 J. E. Lalone	Sarah A. <sup>6</sup> 11 Jan., 1860 m 1880 H. Ballow	Willis J. <sup>6</sup> 2 Feb., 1862 m 1891 Anna Fridle	Franklin E. <sup>6</sup> 5 Feb., 1864 m 1882 Ella Clapperton
		Jane? May, 1877 Mabel? Oct., 1879 Monroe? Jan., 1885		Maude? March, 1882 Delos? Jan Sep. 1884 Kate? May, 1885 Dora? March, 1889 Henry? Nov., 1892	Willis? July, 1892 Mildred? Aug., 1895 Helen? Oct., 1896	John? Oct., 1889 Jean? Feb., 1893

Sarah,<sup>5</sup> 1833-74  
 m 1849  
 Jacob S. Brillhart

John H.<sup>6</sup>  
 27 Aug., 1850  
 m 1870  
 Jennie Hiest

Andrew J.<sup>6</sup>  
 28 June, 1852  
 m 1887  
 Ida F. Lyle

Ella<sup>6</sup>  
 24 July, 1862  
 m 1885  
 Clayton Carpenter

Nellie E.<sup>7</sup>  
 21 Sept., 1887  
 Rhoda A.<sup>7</sup>  
 27 Dec., 1890  
 Clara M.<sup>7</sup>  
 12 Aug., 1893

Arthur L.<sup>7</sup>  
 17 May, 1873

Guy I.<sup>7</sup>  
 4 March, 1875  
 m 1900  
 Irma

Lee F.<sup>7</sup>  
 15 May, 1877  
 m 1902  
 10 July, 1903

Bertha B.<sup>7</sup>  
 9 Nov., 1882

Elizabeth<sup>5</sup>  
 16 Dec., 1840  
 m 1863  
 John J. Schonten

Nora<sup>6</sup>  
 1864-66

Maria<sup>6</sup>  
 25 Feb., 1866  
 m 1899  
 J. Barclay

Perry<sup>6</sup>  
 15 Aug., 1867

Orie<sup>6</sup>  
 31 Aug., 1871  
 m 1894  
 John Carlsen  
 Henry?  
 18 Nov., 1897

Mary<sup>6</sup>  
 11 Sept., 1873

Jane<sup>6</sup>  
 21 Aug., 1877  
 m 1900  
 G. T. Barclay

Jay<sup>6</sup>  
 7 Dec., 1879

Lucy<sup>5</sup>  
 26 July, 1842  
 m 1867  
 Christian Schutt

Herman<sup>6</sup>  
 19 Nov., 1867  
 Mabel E. Adams  
 Christian A. O.<sup>7</sup>  
 Alma Loraine?<sup>7</sup>  
 Dorlesca Augusta?

Eli W.<sup>6</sup>  
 23 Dec., 1868  
 m 1892  
 Ella Mollet  
 Lester C.<sup>7</sup>  
 Ella May?

William<sup>6</sup>  
 18 July, 1870  
 Anna M. C. Homburg  
 Ruth E.<sup>7</sup>  
 Ludwig W. C.<sup>7</sup>

Sarah A.<sup>6</sup>  
 27 Feb., 1872  
 m 1889  
 George L. Clark  
 Elmer L.<sup>7</sup>  
 LeRoy C.<sup>7</sup>  
 Leo. J.<sup>7</sup>

Mary<sup>6</sup>  
 1873-82  
 Maria<sup>6</sup> Derana<sup>6</sup>  
 1875-82  
 1876-77  
 Elizabeth<sup>6</sup>  
 1878-82  
 Dewitt C.<sup>6</sup>  
 1 April, 1880  
 m 1899  
 Susan Swartz  
 Miriam A.  
 May L.<sup>6</sup> 15 May, 1882



Joseph B. Wissler<sup>6</sup> and Family

Jacob Bomberger Wissler<sup>5</sup> and Family



Christian Risser and Family

Residence of Joseph B. Wissler<sup>6</sup>

## JACOB WISSLER<sup>4</sup> AND FAMILY.

Jacob Wissler,<sup>4</sup> son of Jacob Wissler<sup>3</sup> and his wife, Anna Eby, was born on the 10th day of April, A.D. 1803, on the old Groff homestead, on the west bank of Middle Creek, in what is now Clay Township, Lancaster County, Pennsylvania, and grew to manhood on the same farm. In 1825 he was married to Barbara Bomberger, who was born on the 31st day of July, 1805, and had the following children: Anna B., born 23rd August, 1826; Jacob B., born 4th September, 1828; Martha B., born 28th June, 1832; Mary B., born 30th September, 1835, and Levi B., born 3rd June, 1840, died 12th December, 1849. He settled on the farm adjoining the homestead on the southeast, containing about 105 acres, which had been bought by his father and uncle John, from Haack, in 1806. He received a conveyance of the farm from his father on the 13th day of March, 1831. He resided on and worked the farm until his death, which occurred on the 3rd day of October, 1855. His wife died on the 24th day of June, 1872. He and his wife are buried in the Hammer Creek Mennonite cemetery. He was very successful and provided well for his family. He gave the farm to his son Jacob Bomberger Wissler.



Laura R. Hess,<sup>6</sup>  
Mrs. C. Hess.  
(Anna B. Wissler,<sup>5</sup>)

Jacob F. Hess,<sup>5</sup>  
Mrs. J. F. Hess.

Clara R. Hess,<sup>6</sup>

Anna Bomberger Wissler,<sup>5</sup> daughter of Jacob Wissler<sup>4</sup> and his wife Barbara, was born on the 23rd day of August,



1826, on her father's farm where she grew up and married Christian Hess, Jr., who was born 23rd February, 1822, and had a farm at Neffsville, between Lititz and Lancaster City, and died 31st December, 1894. They had a number of children of whom only two grew up and survive. Jacob F.,<sup>6</sup> born 31st July, 1852; Emanuel W.,<sup>6</sup> born 7th August, 1855, died 18th January, 1856; Levi W.,<sup>6</sup> born 27th December, 1856, died 27th August, 1863; Mary W.,<sup>6</sup> born 8th April, 1857, died 15th May, 1861; John W.,<sup>6</sup> born 7th July, 1861, died 30th April, 1862; Anna W.,<sup>6</sup> born 26th December, 1865.

Jacob F. Hess,<sup>6</sup> son of Christian Hess and his wife Anna B. Wissler,<sup>5</sup> was born on the 31st day of July, 1852, and grew up on his father's farm at Neffsville, where he still lives, his mother living with him. He was married on the 19th November, 1877, to Laura E. Reist, by whom he has had the following children: Clara R.,<sup>7</sup> born 28th March, 1879; Anna R.,<sup>7</sup> born 26th August, 1881, died 3rd June, 1882; Galen R.,<sup>7</sup> born 19th January, 1883, died 3rd April, 1883; Laura R.,<sup>7</sup> born 21st April, 1884.

Jacob Bomberger Wissler,<sup>5</sup> son of Jacob Wissler<sup>4</sup> and his wife Barbara was born on the 4th day of September, 1828 on his father's farm where he grew to manhood and received the farm on his father's death. In 1854 he married Anna Brubaker, who was born on the 16th January, 1837, by whom he has had the following children: Joseph B.,<sup>6</sup> born 12th May, 1856; Elizabeth Ida,<sup>6</sup> born 15th November, 1858; Samuel B.,<sup>6</sup> born 21st April, 1855, died 15th July, 1856; Christian B., born 9th February, 1861, died 7th August 1861; Susan B.,<sup>6</sup> born 6th September, 1881, died 30 October, 1891. He has been very successful in his business operations. He was one of the first to go largely into the growing and curing of tobacco in that part of the country. After the marriage of his son he gave him the farm and retired to a small farm on the outskirts of Lititz, Pa., where he has a comfortable home. He also owns about 87 acres of Ezra Wissler's<sup>4</sup> old farm which he purchased from Mr. Brubaker to whom Ezra Wissler sold it in 1876.

Joseph Brubaker Wissler,<sup>6</sup> son of Jacob Bomberger Wissler<sup>5</sup> and his wife Anna Brubaker, was born on his

father's farm on the 12th day of May, 1856. He grew up on the farm and in 1876 married Elizabeth Buch by whom he has had the following children: Minnie Buch Wissler,<sup>7</sup> born 11th May, 1877, died 3rd January, 1892; Jacob Buch Wissler,<sup>7</sup> born 16th September, 1879; Henry Buch Wissler,<sup>7</sup> born 6th June, 1889; Joseph Buch Wissler,<sup>7</sup> born 6th August, 1892; Roy Buch Wissler,<sup>7</sup> born 6th April, 1898. After his marriage his father gave him the farm (Haack farm) on which he and his family still reside.

Elizabeth Ida Wissler,<sup>9</sup> daughter of Jacob B. Wissler<sup>2</sup> and his wife Anna Brubaker, was born on the 15th day of November, 1858, on her father's farm where she grew up. She was married in 1880 to Christian Risser to whom she has had the following children: Jacob Wissler Risser,<sup>7</sup> born 10th November, 1884; Anna B. Risser,<sup>7</sup> born 17th December, 1891; Christian W. Risser,<sup>7</sup> born 12th June, 1899, died 6th January, 1900. After her marriage they settled on a farm belonging to her mother adjoining her father's home near Lititz where they have resided ever since.

Martha Bomberger Wissler,<sup>5</sup> daughter of Jacob Wissler<sup>4</sup> and his wife Barbara Bomberger, was born on her father's farm on the 28th June, 1832, and was married in 1850 to Samuel R. Hess a farmer and nurseryman of Ephrata Township, Lancaster County, Pa., to whom she had twelve children, namely: Anna E.,<sup>6</sup> born 28th September, 1851; Israel W.,<sup>6</sup> born 10th February, 1853; Susan B.,<sup>6</sup> born 25th January, 1855, died 7th November, 1880; Samuel A.,<sup>6</sup> born 5th March, 1857; Mary A.,<sup>6</sup> born 2nd April, 1859; Jacob W.,<sup>6</sup> born 22nd September, 1860, died 30th August, 1879; Elias P.,<sup>6</sup> born 13th September, 1862, died December, 1862; Lizzie J.,<sup>6</sup> born 14th December, 1863; died 17th December, 1865; Emma W.,<sup>6</sup> born 23rd December, 1865; Sarah A.,<sup>6</sup> born 15th February, 1868, died 15th October, 1872; Barbara E.,<sup>6</sup> born 4th June, 1870; Menno W.,<sup>6</sup> born 13th March, 1874.

Anna E. Hess,<sup>6</sup> daughter of Samuel R. Hess and his wife Martha B. Wissler,<sup>5</sup> was born 28th September, 1851, and was married in 1873 to Benjamin D. Heller a farmer of East Lampeter Township, Lancaster County, Pa., near Binkley's Bridge, to whom she has the following children: Samuel H.,<sup>7</sup> born 4th November, 1873; Henry Ellsworth,<sup>7</sup>

born 27th June, 1876; Benjamin H.,<sup>7</sup> born 13th June, 1878; Jacob H.,<sup>7</sup> born 11th February, 1880; John H.,<sup>7</sup> born 25th May, 1882; Laura H.,<sup>7</sup> born 1st December, 1886; Parke H.,<sup>7</sup> born 24th July, 1894.

Israel Wissler Hess,<sup>6</sup> son of Samuel R. Hess and his wife Martha B. Wissler,<sup>5</sup> was born 10th February, 1853, died 23rd July, 1877. He was married in 1874 to Anna Doster by whom he had the following children: Alvin D.,<sup>7</sup> born 1st July, 1875, married Alice Furloo by whom he has one child born in 1899; Joseph Walter,<sup>7</sup> born 22nd August, 1876; Martha D.,<sup>7</sup> born 21st October, 1877. Mrs. Israel W. Hess lives near the German Brethren Church on Middle Creek.

Samuel A. Hess,<sup>6</sup> son of Samuel R. Hess and his wife, Martha B. Wissler,<sup>5</sup> was born on the 5th day of March, 1857, and lives on a farm about one mile east of Wissler's Mill in Lancaster Co. He was married in 1880 to Mary F. Longmecker by whom he has the following children: Margaret L.,<sup>7</sup> born 11th May, 1881, died 5th June, 1881; Abraham L.,<sup>7</sup> born 29th July, 1882; Ella Mary,<sup>7</sup> born 12th October, 1885; Jacob L.,<sup>7</sup> born 13th June, 1887; Henry L.,<sup>7</sup> born 18th December, 1888; David James,<sup>7</sup> born 14th November, 1890; Christian L.,<sup>7</sup> born 22nd October, 1892; William L.,<sup>7</sup> born 29th September, 1894; Amanda L.,<sup>7</sup> born 23rd April, 1897; Anna L.,<sup>7</sup> born 25th April, 1899.

Emma W. Hess,<sup>6</sup> daughter of Samuel R. Hess and his wife, Martha B. Wissler,<sup>5</sup> was born 23rd December, 1865, and married 23rd October, 1890, to David L. Burkholder, to whom she has the following children: Harriet H.,<sup>7</sup> born 31st October, 1891; Samuel H.,<sup>7</sup> born 29th November, 1893. Warren H.,<sup>7</sup> born 29th October, 1895; David H.,<sup>7</sup> born 4th April, 1898.

Barbara E. Hess,<sup>6</sup> daughter of Samuel R. Hess and his wife, Martha B. Wissler,<sup>5</sup> was born 4th June, 1870, and married to William O. Sprecher of Ephrata to whom she has one child, Clarence H. Sprecher,<sup>7</sup> born 28th September, 1899.

Menno Wissler Hess,<sup>6</sup> son of Samuel R. Hess and his wife, Martha B. Wissler,<sup>5</sup> was born on the 13th March, 1874, and married Magdalena Sengenig, by whom he has

the following children: Lloyd S.,<sup>7</sup> born 24th September, 1895; Samuel Ralph,<sup>7</sup> born 12th October, 1897.

Mary Bomberger Wissler,<sup>3</sup> daughter of Jacob Wissler,<sup>4</sup> and his wife, Barbara Bomberger, was born on her father's farm on the 30th day of September, 1835, and married Peter B. Rohrer, a farmer residing in East Petersburg, Lancaster Co., Pa., to whom she has the following children: (1) Anna Wissler Rohrer,<sup>6</sup> born 31st January, 1861, married Abraham L. Lehman, formerly of East Lampeter, now a paint manufacturer and dealer, residing in Lancaster City, Pa., to whom she has the following children: Mary R.,<sup>7</sup> born 17th December, 1882; Frank,<sup>7</sup> born 20th December, 1884; Ada R.,<sup>7</sup> born 5th February, 1887; Anattee R.,<sup>7</sup> born 5th September, 1892; B. Naomi,<sup>7</sup> born 1st November, 1896. (2) Barbara Ella Rohrer,<sup>6</sup> born 22nd February, 1863, married Edward Hauser, manufacturer, of York, Pa., who was born 4th December, 1863, to whom she has one child. (3) Jacob Wissler,<sup>6</sup> born 3rd July, 1866, is single and lives at home. (4) Mary Wissler,<sup>6</sup> born 16th October, 1870, died 22nd February, 1871. (5) Peter Bachman,<sup>6</sup> born 25th July, 1875, married 26th November, 1902, to Elizabeth Hershey of East Petersburg, Pa., with whose parents they reside.

Levi Bomberger Wissler,<sup>7</sup> son of Jacob Wissler<sup>4</sup> and his wife, Barbara Bomberger, was born on the 3rd day of June, 1840, and died on the 12th day of December, 1849.

Jacob Wissler † 10 April 1803—3 Oct., 1855.  
 m Barbara Bomberger 31 July, 1805—24 June, 1872.

Anna Bomberger Wissler: <sup>5</sup> b 23 Aug. 1826 m Christian Hess b 23 Feb., 1822, d. 31 Dec., 1891	Jacob Bomberger Wissler: <sup>5</sup> b 4 Sep., 1828, m 1851 Anna Brubaker b 16 Jan. 1837	Martha Bomberger Wissler: <sup>5</sup> b 28 June, 1832, m 1850 Samuel R. Hess
---	--	---

Mary Bomberger Wissler: <sup>5</sup> b 30 Sept., 1835 m Peter B. Rohrer	Levi Bomberger Wissler 1840—49
---	-----------------------------------

Anna Bomberger Wissler:<sup>5</sup>  
 b 23 Aug., 1826  
 m Christian Hess  
 b 23 Feb., 1822—d Dec., 1894

Jacob F. <sup>6</sup> b 31 July 1852 m 19 Nov., 1877 Laura E. Reist	Emanuel W. <sup>6</sup> 1855-6	Levi W. <sup>6</sup> 1856-63	Mary W. <sup>6</sup> 1859-61	John W. <sup>6</sup> 1861-62	Anna W. <sup>6</sup> 1865 m 6 Oct., 1886 Rudolph Herr
--	-----------------------------------	---------------------------------	---------------------------------	---------------------------------	--

Clara R. <sup>7</sup> b 27 March, 1879— Annie R. <sup>7</sup> 1881-82	Galen R. <sup>7</sup> 1883-3 Laura R. <sup>7</sup> b 21 April 1884
--	---

Laura H. <sup>7</sup> b 28 Sept. 1887 Howard H. <sup>7</sup> b 26 July, 1889
---

Jacob Bomberger Wissler:<sup>5</sup>  
 b 4 Sept., 1828, m 1851  
 Anna Brubaker  
 b 16 Jan. 1837

Samuel B. <sup>6</sup> 1855-56	Joseph B. <sup>6</sup> b 12 May, 1856 m 1876 Elizabeth Buch Minnie B. <sup>7</sup> 1877-82 Jacob B. <sup>7</sup> 16 Sept., 1879 Henry B. <sup>7</sup> 6 June, 1889 Joseph B. <sup>7</sup> 6 Aug., 1892 Roy B. <sup>7</sup> 6 April, 1898	Elizabeth Ida <sup>6</sup> 15 Nov. 1858 m 1880 Christian Risser Jacob W. <sup>7</sup> 10 Nov. 1884 Anna B. <sup>7</sup> 17 Dec., 1891 Christian W. <sup>7</sup> 1899-1901	Christian B. <sup>6</sup> 1861-61	Susan B. <sup>6</sup> 1881-91
-----------------------------------	---	--	--------------------------------------	----------------------------------

Martha Bomberger Wissler:<sup>5</sup>  
 b 28 June, 1832, m 1850  
 Samuel R. Hess

Anna E. <sup>6</sup> b 28 Sept., 1851 m 1873 Benjamin D. Heller	Israel W. <sup>6</sup> 1853-77 m 1874 Anna Doster	Susan B. <sup>6</sup> 1855-1880	Samuel A. <sup>6</sup> 5 March, 1857 m 1880 M. F. Longenecker	Mary A. <sup>6</sup> 2 April, 1859	Jacob W. <sup>6</sup> 1860-78
--	--	------------------------------------	--	---------------------------------------	----------------------------------

Samuel H. <sup>7</sup> 1 Nov., 1873 Henry E. <sup>7</sup> 27 June, 1876 Benjamin H. <sup>7</sup> 13 June, 1878 Jacob H. <sup>7</sup> 11 Feb., 1880 John H. <sup>7</sup> 25 May, 1882 Laura H. <sup>7</sup> 1 Dec., 1886 Parke H. <sup>7</sup> 21 July, 1894	Alvin D. <sup>7</sup> 11 July, 1875 m Alice Furlow Joseph W. <sup>7</sup> 22 Aug., 1876 Martha D. <sup>7</sup> b 21 Oct., 1877
--	--

Margaret L. <sup>7</sup> 1881-81 Abraham L. <sup>7</sup> 29 July, 1882 Ella Mary <sup>7</sup> 12 Oct., 1885 Jacob L. <sup>7</sup> 13 June, 1887 Henry L. <sup>7</sup> 18 Dec., 1888 David James <sup>7</sup> 11 Nov., 1890 Christian L. <sup>7</sup> 22 Oct., 1892 William L. <sup>7</sup> 29 Sep., 1894 Amand L. <sup>7</sup> 23 April, 1897 Annie L. <sup>7</sup> 25 April, 1899
---



Elias P. <sup>6</sup> 1862-62	Elizabeth J. <sup>7</sup> 1863-75	Emma W. <sup>6</sup> 23 Dec., 1865 m 23 Oct., 1890 David L. Burkholder	Sarah A. <sup>6</sup> 1868-72	Barbara E. <sup>6</sup> b June, 1870 m W. O Sprecher Clarence H. <sup>7</sup> 28 Sep., 1899	Menno W. <sup>6</sup> 13 March, 1874 m 1894 Magdalena Sensenig Lloyd S. <sup>7</sup> 24 Sep. 1896 Samuel Ralph <sup>7</sup> 12 Oct., 1897
		Harriet H. <sup>7</sup> 31 Oct., 1891 Samuel H. <sup>7</sup> 29 Nov., 1893 Warren H. <sup>7</sup> 29 Oct., 1895 David A. <sup>7</sup> 4 April, 1898 Mary Bomberger Wissler <sup>5</sup> b 30 Sept., 1885 m Peter B. Rohrer			
Anna W. <sup>6</sup> 31 Jan., 1861 m A. L. Lehman	Barbara Ella <sup>6</sup> 22nd Feb., 1863 m Edward H. Hauser b 4 Dec, 1863 Anna Mary R. <sup>7</sup> 13 Jan., 1896	Jacob W. <sup>6</sup> 5 July, 1866	Mary W. <sup>6</sup> 16 Oct., 1870 d 22nd Feb., 1871	Peter Bachman <sup>6</sup> 25 July, 1875 m 26 Nov., 1902 Elizabeth Hervey	
Mary R. <sup>7</sup> 17 Dec., 1882 Frank <sup>7</sup> 29 Dec., 1881 Ada R. <sup>7</sup> 5 Feb., 1887 Anattee R. <sup>7</sup> 5 Sept., 1892 B. Naomi <sup>7</sup> Nov., 1896					



- |  |   |
|--|---|
| 1. Christian Wissler. <sup>4</sup>         | 2. Benjamin Wissler. <sup>5</sup>                   |
| 3. Christian F. Wissler. <sup>6</sup>      | 4. Samuel Wissler. <sup>6</sup>                     |
| 5. Jacob H. Wissler. <sup>5</sup>          | 6. Mrs. Ben. Wissler. <sup>5</sup>                  |
| 7. Christian Wissler. <sup>6</sup>         | 8. Mrs. Lantz (Elizabeth H. Wissler <sup>5</sup> ). |
| 9. Residence of Ben. Wissler. <sup>5</sup> | 10. Mrs. Hershey (M. A. Wissler <sup>5</sup> ).     |

## CHRISTIAN WISSLER<sup>4</sup>.

Christian Wissler,<sup>4</sup> son of Jacob Wissler<sup>3</sup> and his wife, Anna Eby, was born on the old Groff homestead on the west bank of Middle Creek, in Clay Township, Lancaster County, Pa., on the 14th day of January, A.D. 1805, and grew up on the farm to be a tall man. In 1831 he married Anna Hostetter, daughter of Bishop Jacob Hostetter, who was born on the 25th day of August, 1807. They had the following children: Elizabeth Henrietta,<sup>5</sup> born July 28th, 1832; Benjamin,<sup>5</sup> born October 5th, 1838; Jacob Hostetter,<sup>5</sup> born July 3rd, 1842, and Mary Anna,<sup>5</sup> born May 7th, 1845. He settled on a farm of about 64 acres, across Middle Creek on the east of the old homestead, which he received from his father, the deed bearing date the 23rd day of April, 1834. Here he spent the rest of his life and here all his family were born. He built a comfortable stone residence on his farm and in 1843 built a stone grist mill on his farm on the east bank of Middle Creek. He worked the farm and mill throughout his life, and prospered, leaving his children well provided for. He died on the 11th day of November, 1878, and was buried in the Hammer Creek Mennonite Cemetery. His wife died on the 19th day of September, 1895, and is buried beside her husband. They were Mennonites.

Elizabeth Henrietta Wissler,<sup>5</sup> daughter of Christian Wissler<sup>4</sup> and his wife Anna, was born on her father's farm on the 28th day of July, 1832. She was married in 1850 to Samuel B. Myers, to whom she had the following children: Christian Wissler,<sup>6</sup> born October 27th, 1851; Benjamin Franklin,<sup>6</sup> born 19th August, 1855; Abraham Lincoln,<sup>6</sup> born June 4th, 1857; John Milton,<sup>6</sup> born March 11th, 1859; William Miller,<sup>6</sup> born April 14th, 1861, died February 13th, 1863, and Anna Jeanetta,<sup>6</sup> born August 14th, 1863, at Union Forge, Va., died September 4th, 1868, at Lantz's Mills, Va. For several years Samuel B. Myers resided at and kept a general store at Rothsville Lancaster Co., Pa. In 1854 he purchased Columbia Fur-

nace, Virginia, and removed there with his family. In 1857 he sold Columbia Furnace, Va., to John Wissler.<sup>4</sup> In the Civil War he joined the Confederates and fought on that side throughout the war. He died at Union Forge, Va., on the 15th day of January, 1865. On October 15th, 1867, Elizabeth Henrietta Myers<sup>5</sup> was married to Jacob Lantz, of Lantz's Mills, Virginia, who was born Jan. 6th, 1814, and died October 17th, 1883, and to whom she had the following children: Jacob Wissler Lantz,<sup>6</sup> born October 21st, 1868, and Cora Rebecca,<sup>6</sup> born October 4th, 1875. A few years ago she removed to Harrisburg, Pa., where she now resides.

Christian Wissler Myers,<sup>6</sup> son of Samuel B. Myers and his wife Elizabeth H. Wissler,<sup>5</sup> was born at Rothsville, Pa., on the 27th day of October, 1851, and went with his parents to Virginia. On the 7th day of May, 1872, he married Rebecca E. Martin, of Lincoln, Pa., born 28th March, 1848, died January 2nd, 1899, and by whom he had one child, Samuel Martin Myers,<sup>7</sup> born June 16th, 1873. He resides now in Harrisburg, Pa.

Samuel Martin Myers,<sup>7</sup> son of Christian W. Myers<sup>6</sup> and his wife Rebecca E. Martin, was born on the 16th day of June, 1873, and married on the 25th day of July, 1896, to Gertrude E. Mellinger, of Iowa, by whom he has one child, Christian Mellinger Myers,<sup>8</sup> born July 1st, 1897. He is a lawyer and resides at Wilmerding, a suburb of Pittsburg, Pa.

Benjamin Franklin Myers,<sup>6</sup> son of Samuel B. Myers and his wife Elizabeth H. Wissler,<sup>5</sup> was born on the 19th day of August, 1855, at Columbia Furnace, Va., and married Virginia B. Archer, of Kentucky, on the 26th day of December, 1878, by whom he has one child, Samuel Archer Myers,<sup>7</sup> born 25th July, 1885. He resides at Lantz's Mills, Va.

Abraham Lincoln Myers,<sup>6</sup> son of Samuel B. Myers and his wife Elizabeth H. Wissler,<sup>5</sup> was born on the 4th day of June, 1857, at Columbia Furnace, and died February 15th, 1892. He was married June 4th, 1878, to Ida V. Veach, who died February 12th, 1894. They had the following children: Joseph Luther,<sup>7</sup> born April 13th, 1879, at Lantz's Mills; John Franklin,<sup>7</sup> born September

21st, 1881, at Columbia Furnace; Charles Albert,<sup>7</sup> born January 5th, 1884, at Liberty Furnace; Abraham Gay,<sup>7</sup> born March 17th, 1886, at Edinburg, Va.; Mary Ida Stella,<sup>7</sup> born November 28th, 1888, died April 29th, 1891; Anna,<sup>7</sup> born November 13th, 1891, died November 20th, 1892.

John Milton Myers,<sup>6</sup> son of Samuel B. Myers and his wife, Elizabeth H. Wissler,<sup>5</sup> was born March 11th, 1859, at Henrietta Furnace, Va., and died at Washington, D.C., September, 18th, 1891. On December, 27th, 1881, he married Alice A. Erb of Lincoln, Pa., by whom he had the following children: Milton E.,<sup>7</sup> born January 21st, 1883, at Wernersville, Pa.; Alma May,<sup>7</sup> born December, 6th, 1884, at Wernersville, Pa.; Elizabeth Celicia Maud,<sup>7</sup> born May 6th, 1888, in Montgomery Co., Va.; Cora Virginia,<sup>7</sup> born November 11th, 1891, at Lantz's Mills, Va.

Jacob Wissler Lantz,<sup>6</sup> son of Jacob Lantz and his wife, Elizabeth H. Wissler,<sup>5</sup> was born October 21st, 1868, at Lantz's Mills, Va., and was married on the 8th day of April, 1896, to Clara Keesling, and resides at Rural Retreat, Va.

Cora Rebecca Lantz,<sup>6</sup> daughter of Jacob Lantz and his wife, Elizabeth H. Wissler,<sup>5</sup> was born at Lantz's Mills, Va., on the 4th day of October, 1875, and was married on the 23rd day of March, 1899, to George W. Giede of Harrisburg, Pa., where she resides.

Benjamin Wissler,<sup>5</sup> son of Christian Wissler<sup>4</sup> and his wife, Anna, was born on his father's farm at Wissler's Mills, Pa., on the 5th day of Oct., 1838. Here he grew to manhood and assisted his father in the mill and on the farm, both of which he received at his father's death. He married Susan Fry, by whom he has had the following children: Ella,<sup>6</sup> born September 30th, 1864, died February 1889; Christian Fry,<sup>6</sup> born in 1866, and Samuel Lincoln,<sup>6</sup> born in 1868. He has successfully carried on the farm and mill since his father's death, and in addition carries on a cigar factory at Lincoln, Pa., being ably assisted in his business operations by his two sons, both of whom are still unmarried and reside at home. In 1902 he was elected Registrar of Wills for Lancaster Co., Pa., being the Republican candidate. The office is one of the best in the gift of the people, having a salary of \$4,000 per annum attached

to it. His election to this office bespeaks his popularity, worth and ability much more convincingly than any words of the writer.

Jacob Hostetter Wissler,<sup>5</sup> son of Christian Wissler<sup>4</sup> and his wife, Anna, was born on his father's farm at Wissler's Mills, Pa., on the 3rd day of July, 1842. When a young man he went to Virginia where he learned the iron business with his brother-in-law, Samuel B. Myers, and his uncle, John Wissler,<sup>4</sup> becoming an expert in the business. He was for some years manager of a large iron furnace in North Carolina, where on Jan. 7th, 1879, he married Mildred Houze Jones by whom he has had one son, Christian Wissler,<sup>6</sup> born Oct. 4th, 1879, and one daughter, Sarah Mildred, born June 24th, 1903, died June 26th, 1903. He is now manager of a large iron furnace at Rural Retreat, Wythe Co., Va., owned by The Lobdill Car Wheel Co. of Wilmington, Delaware. He also manages his own and the company's real estate in Virginia and North Carolina. Although a staunch Republican, he is very popular, and is termed Captain Wissler. At Columbia furnace he was called "Little Jake" to distinguish him from John Wissler's son, Jacob, who is a very tall man.

Mary Anna Wissler,<sup>5</sup> daughter of Christian Wissler<sup>4</sup> and his wife, Anna, was born on her father's farm at Wissler's Mills, Pa., on the 7th day of May, 1845. She married Harry Hershey, the proprietor of "The Hershey House," in Harrisburg, Pa., to whom she has had the following children: Anna,<sup>6</sup> born March 17th, 1871; Christian Wissler,<sup>6</sup> born September 2nd, 1872, married July 12th, 1897, Anna Marion, by whom he has one child, Mary Anna,<sup>7</sup> born October 20th, 1899; David W.,<sup>6</sup> born May 15th, 1874, married about 1900; Elizabeth,<sup>6</sup> born July 29th, 1875; George Smith,<sup>6</sup> born March 9th, 1879, died June, 1902; Malinda,<sup>6</sup> born July 25th, 1881; Frank,<sup>6</sup> born May 29th, 1883; Mabel,<sup>6</sup> born May 18th, 1884, died July 13th, 1884; Helen,<sup>6</sup> born June 7th, 1888.

Christian Wissler<sup>1</sup>  
1805-78

m  
Anna Hostetter  
1807-95

Elizabeth Henrietta Wissler<sup>5</sup>      Benjamin<sup>5</sup>      Jacob Hostetter<sup>5</sup>      Mary Anna<sup>5</sup>  
b 28 July, 1832      5 Oct., 1838      3 July, 1842      7 May, 1845  
m 1850      m 1867      m      m  
Samuel B. Myers.      Jacob Lantz,      Susan Fry      Mildred H. Jones      Harry Hershey  
d 1865      1814-53

Christian W.<sup>6</sup>      Benjamin F.<sup>6</sup>      Abraham L.<sup>6</sup>      John M.<sup>6</sup>      William M.<sup>6</sup>      Anna J.<sup>6</sup>  
b Oct. 27, 1851      b 19 Aug., 1855      1857-92      1859-91      1861-63      1863-68  
m      m      m      m  
Rebecca E. Martin      V. B. Archer      I. V. Veach      A. E. Erb  
m  
Samuel M.<sup>7</sup>      Samuel Archer<sup>7</sup>      Joseph I.<sup>7</sup>      Milton E.<sup>7</sup>  
b June 16, 1873      b 25 July, 1875      13 April, 1879      21 Jan., 1883  
m      m      m      m  
G. E. Mellinger      John F.<sup>7</sup>      Alma M.<sup>7</sup>  
m      21 Sept., 1881      6 Dec., 1881  
Christian M.<sup>7</sup>      Charles A.<sup>7</sup>      Elizabeth C.M.<sup>7</sup>  
b July 1, 1897      5 Jan., 1884      6 May, 1888  
m      Abraham G.<sup>7</sup>      Cora V.<sup>7</sup>  
m      17 March, 1886      11 Nov., 1891  
m      Mary I. S.<sup>7</sup>  
m      188-91  
m      Anna<sup>7</sup>  
m      1891-92

Elizabeth Henrietta Wissler Myers<sup>5</sup>  
b 28 July, 1832  
m 1867  
Jacob Lantz  
1814-53

Jacob Wissler<sup>6</sup>      Cora Rebecca<sup>6</sup>  
21 Oct. 1869      4 Oct., 1875  
m      m  
Clara Keesling      Geo. W. Giede  
Benjamin Wissler<sup>5</sup>      Jacob Hostetter Wissler<sup>6</sup>  
5 Oct., 1838      3 July, 1842  
m      m  
Susan Fry      Mildred H. Jones  
m      m  
Ella<sup>6</sup>      Christian<sup>6</sup>  
1864-80      4 Oct., 1873  
Christian F.<sup>6</sup>      Sarah Mildred<sup>1</sup>  
1866      June 24 26 1903  
Samuel L.<sup>6</sup>  
1868

Mary Anna Wissler<sup>5</sup>  
7 May, 1845  
m  
Harry Hershey

Anna<sup>6</sup>      Christian W.<sup>6</sup>      David W.<sup>6</sup>      Elizabeth<sup>6</sup>      George S.<sup>6</sup>      Malinda<sup>6</sup>  
17 Mar., 1871      2 Sep., 1872      15 May, 1874      29 July, 1876      1879-1902      25 July, 1881  
m  
Anna Marion  
m  
Mary Anna  
20 Oct., 1899

Frank<sup>6</sup>      Mabel<sup>6</sup>      Helen<sup>6</sup>  
29 May, 1883      1884-4      7 June, 1888



Magdalena Wissler,<sup>4</sup> daughter of Jacob Wissler,<sup>3</sup> and his wife, Anna Eby,<sup>4</sup> was born on the 23rd day of February, 1807, on the old Groff homestead, on the west bank of Middle Creek, in Elizabeth Township, Lancaster County, Pennsylvania, and grew up on the farm. She was married in 1827 to Jacob Landis, who was born on the 2nd day of January, 1803. They settled on a farm near the town of Ephrata, Lancaster Co., Pa., where they resided all their lives. She had the following children: Elizabeth,<sup>5</sup> born February 11th, 1828; Jacob Wissler,<sup>5</sup> born November 2nd, 1834; Ezra,<sup>5</sup> died in infancy; Mary Ann,<sup>5</sup> born January 27th, 1839. She died on the 3rd day of November, 1853, and was buried in Mohler's Cemetery, near Ephrata. Her husband died on the 29th day of August, 1876, and was buried in the same cemetery.

Elizabeth Landis,<sup>5</sup> daughter of Jacob Landis and his wife, Magdalena Wissler,<sup>4</sup> was born on the 11th day of February, 1828, on her father's farm where she grew up. She was married on the 28th day of December, 1847, to Levi Landis, a neighboring farmer. She and her husband have lived on the same farm ever since. She has had the following children: Ezra L., Israel, Levi L., Jacob L., Samuel L. and Mary Ann.

I. Ezra L. Landis,<sup>6</sup> born November 6, 1848, married November 7th, 1871, Harriet B. Hess, and died July 16th, 1881, leaving a widow and six children, as follows: (1) Levi H. Landis,<sup>7</sup> still unmarried; (2) Elizabeth H.,<sup>7</sup> married T. M. Andes, to whom she has two children—Mary Andes,<sup>8</sup> and Catherine Andes;<sup>8</sup> (3) Anna H. Landis,<sup>7</sup> married Clayton Stelman, to whom she has three children—John Stelman,<sup>8</sup> Ellen Stelman,<sup>8</sup> Landis Stelman;<sup>8</sup> (4) Sarah H. Landis,<sup>7</sup> married Oscar Von Neida, to whom she has two children—Stanley L. Von Neida,<sup>8</sup> Helen Von Neida;<sup>8</sup> (5) Susan H. Landis,<sup>7</sup> died unmarried; (6) Harriet H. Landis,<sup>7</sup> single.

II. Israel Landis,<sup>6</sup> born July 15th, 1851, died September 21st, 1874. Unmarried.

III. Levi L. Landis,<sup>6</sup> born January 1st, 1853, married April 3rd, 1882, Salinda R. Hagy, by whom he has four children as follows: Cora H. Landis,<sup>7</sup> Ira H. Landis,<sup>7</sup> Mabel H. Landis,<sup>7</sup> Charlotte H. Landis.<sup>7</sup>

IV. Jacob L. Landis,<sup>6</sup> born November 7th, 1854, married Fraima A. Sweigart, by whom she has two children—(1) Susan Landis,<sup>7</sup> married Amos F. Longenecker, to whom she has one child, Nettie Longenecker;<sup>8</sup> (2) Mary Landis,<sup>7</sup> married Samuel M. Rettew, to whom she has two children—Irene Rettew,<sup>8</sup> Edith Rettew.<sup>8</sup>

V. Samuel L. Landis, born November 14th, 1858, married Emma Mohler, who is dead. He has one child, Laura M. Landis.<sup>7</sup>

VI. Mary Ann Landis,<sup>6</sup> born August 9th, 1860, married A. E. Srego November, 1883. Her husband died shortly afterwards leaving no children. She resides with her parents.



Jacob Wissler Landis,<sup>5</sup>

Jacob Wissler Landis,<sup>5</sup> son of Jacob Landis and his wife, Magdalena Wissler,<sup>4</sup> was born on the 2nd day of November, 1834, on his parents' farm, where he grew up and spent his life. He received the farm from his father. He was married on the 4th day of November, 1862, to Sarah Ann Fry, who was born on the 12th day of April, 1837, by whom he had the following children: Alma,<sup>6</sup> born April 26th, 1864; Jacob Harlan,<sup>6</sup> born September 1st, 1865; Anna C.,<sup>6</sup> born October 28th, 1866; Jacob C.,<sup>6</sup> born January 9th, 1868; Emma,<sup>6</sup> born September 25th, 1869; Charles S.,<sup>6</sup> born October 19th, 1870. He did a large business in horses. He died on the 14th day of April, 1897, and his wife died

on the 12th day of March, A.D. 1903. They are both buried in Mohler's Cemetery, near Ephrata, Pa.

Alma Landis,<sup>6</sup> daughter of Jacob Wissler Landis<sup>5</sup> and his wife, Sarah Ann Fry, was born on the 26th day of April, 1864, on her father's farm in Ephrata Township, Lancaster County, Pa., where she still resides. She was married to Milton H. Shreiner, to whom she has one child, Martin L. Shreiner.<sup>7</sup>

Jacob Harlan Landis,<sup>6</sup> son of Jacob Wissler Landis,<sup>5</sup> and his wife, Sarah Ann Fry, was born on the 1st day of September, 1865, on his father's farm where he grew up. He was married to Emma Eberly, but has no children. He resides in Lancaster City, Pa.

Anna C. Landis,<sup>6</sup> daughter of Jacob Wissler Landis<sup>5</sup> and his wife Sarah Ann Fry, was born on the 28th day of October, 1866, on her father's farm where she grew up. She was married to H. Shirk of Glendale, Virginia, to whom she has four children—Evelyn,<sup>7</sup> Valeria,<sup>7</sup> Ernestine,<sup>7</sup> Kenelin.<sup>7</sup>

Jacob C. Landis,<sup>6</sup> son of Jacob Wissler Landis<sup>5</sup> and his wife, Sarah Ann Fry, was born on the 9th day of January, 1868, on his father's farm. He was married to Jane Fassnacht by whom he has four children—Ellen,<sup>7</sup> Alma,<sup>7</sup> Susan,<sup>7</sup> Harlan.<sup>7</sup>

Emma Landis,<sup>6</sup> daughter of Jacob Wissler Landis<sup>5</sup> and his wife, Sarah Ann Fry, was born on the 25th day of September, 1869, on her father's farm. She was married to Dr. J. D. Hartman to whom she has three children—Jacob,<sup>7</sup> Nelson,<sup>7</sup> Mary Ann.<sup>7</sup>

Charles S. Landis,<sup>6</sup> son of Jacob Wissler Landis<sup>5</sup> and his wife, Sarah Ann Fry, was born on the 19th day of October, 1870, on his father's farm. He was married to Mabel Baker, but has no children.

Mary Ann Landis,<sup>6</sup> daughter of Jacob Landis and his wife, Magdalena Wissler,<sup>4</sup> was born on the 27th day of January, 1839, on her parents' farm. On the 16th day of November, 1858, she was married to S. P. A. Weidman a dealer in general merchandise at Weidmansville, Pa., who died on the 13th day of April, 1875, and to whom she had one child, Martin Landis Weidman, who is unmarried and resides in the town of Ephrata, Pa., where he has been in the banking business for 23 years. He is now President of the Ephrata National Bank. She died at Ephrata, on January 18th, 1904.

Margdalen Wissel r. 1807-1853

m 1827

Jacob Landis 1803-1876

Elizabeth<sup>s</sup>  
b 11 Feb., 1828  
m 1847

Levi Landis

Isaac I.<sup>6</sup>  
1818-81

Harrriet B. Hess

41

Jacob Wissler<sup>s</sup>  
1831-1897  
m 1862  
Sarah Ann Fry

Mary Ann<sup>s</sup>  
1830 1904  
m 1855

S. P. A. Weidman  
d 13 Apr., 1875

Martin I.<sup>6</sup>

Samuel I.<sup>6</sup>  
m Emma Mohler

Mary Ann<sup>s</sup>  
A. E. Strego

Laura M.<sup>s</sup>

Jacob J.<sup>6</sup>  
b 7 Nov., 1831

m  
Praina A. Schweigart

Mary<sup>s</sup>

Susan<sup>s</sup>  
m A. F. Longenecker

Irrehs

Edith<sup>s</sup>

Levi I.<sup>6</sup>  
b 1 Jan., 1863

m  
Salina K. Higy

Cora H.<sup>s</sup>

Ira H.<sup>s</sup>

Mabel H.<sup>s</sup>

Charlotte H.<sup>s</sup>

Susan H.<sup>s</sup>

Harrriet H.<sup>s</sup>

Nettie<sup>s</sup>

Isaac I.<sup>6</sup>  
1831-1874

Sarah H.<sup>s</sup>

m  
O. von Neidha

Stauley J.<sup>s</sup>

Helen<sup>s</sup>

Anna H.<sup>s</sup>

m  
C. Stehman

John<sup>s</sup>

Helen<sup>s</sup>

Landis<sup>s</sup>

Elizabeth H.<sup>s</sup>

m  
J. M. Anden

Mary<sup>s</sup>

Catherine<sup>s</sup>

John<sup>s</sup>

Helen<sup>s</sup>

Landis<sup>s</sup>

Alma<sup>s</sup>  
26 April, 1861

m  
Milton H. Shreiner

Emma Eberly

Martin I.<sup>7</sup>

J. Harring<sup>s</sup>

1 Sept., 1805

m  
Anna C<sup>6</sup>

28 Oct., 1866

m H. Shirk

Evelyn<sup>s</sup>

Valeria<sup>s</sup>

Ernestine<sup>s</sup>

Ketellu<sup>s</sup>

Jacob C.<sup>6</sup>

9 Jan., 1863

m  
Jane Fassnacht

Ellen<sup>s</sup>

Alma<sup>s</sup>

Susan<sup>s</sup>

Harlan<sup>s</sup>

Emma<sup>s</sup>

25 Sept., 1869

m  
Dr. J. D. Hartman

Jacob<sup>s</sup>

Nelson<sup>s</sup>

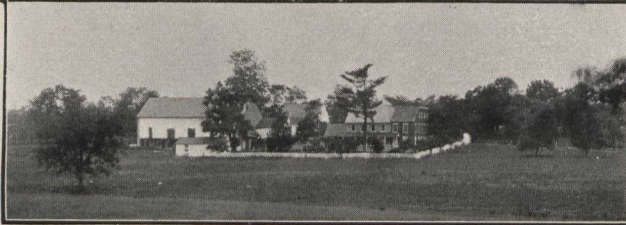
Mary Ann<sup>s</sup>

Charles S.<sup>6</sup>

19 Oct., 1870

m  
Mabel Baker





1. Mrs. Ezra Wissler.<sup>4</sup>                      2. Ezra Wissler.<sup>4</sup>  
 3. Aaron B. Wissler.<sup>5</sup>                      4. John K. Wissler.<sup>6</sup>                      5. William I. Wissler.<sup>7</sup>  
 6. John B. Wissler.<sup>5</sup>                      7. Mrs. Lane (Alice O. Wissler)<sup>6</sup>.                      8. Sabina I. Wissler.<sup>6</sup>  
 Farm Buildings of Ezra Wissler.<sup>4</sup>

## EZRA WISSLER<sup>4</sup> AND FAMILY.

Ezra Wissler,<sup>4</sup> son of Jacob Wissler<sup>3</sup> and his wife, Anna Eby, was born on the old Groff homestead on the west bank of Middle Creek, in Elizabeth, now Clay, Township, Lancaster County, Pa., on the sixth day of May, A.D. 1809. He grew up on the same farm to be a tall, stout, strongly built man. He received his education in the common schools of the neighborhood, but attended chiefly the school in the woods between Clay and Durlach. He was a born mathematician. After leaving school he worked for his father on the farm which was then mostly forest except about one hundred acres near the house which were cleared and under cultivation. On the 24th day of November, 1831, he was married to Mary Bauman, daughter of John and Margaret Fahnestock Bauman and they began housekeeping in a small log house then at the easterly corner of the old house with one end in the water of Middle Creek. After their marriage Ezra rented the farm for some years and worked it on shares, his father living in the large house for a few years until he built a small red brick cottage across the road to which he removed. His elder son, Aaron Bauman, was born in the little house on the 24th day of August, A.D. 1832, and his younger son, John Bauman, was born in the large house on the 30th day of May, A.D. 1836. About 1839 his father conveyed to him the westerly part of the old homestead, containing about one hundred and four acres then mostly forest and the same year he built a large stone barn. The following year, 1840, he built a large stone house, the cash outlay for both, in addition to the materials which he had, was \$994.95. On the 4th day of March, 1841, he moved into this house from his father's old house. He had much difficulty in obtaining a sufficient supply of water as he dug sixty feet through solid limestone rock and bored sixty-two feet farther. He also made a large cistern to hold the rain water from the barn roof.

After taking possession of his farm, Ezra proceeded to cut down and market the timber, on his land, which consisted chiefly of white oak, black oak, hickory and chestnut. He hauled the cord-wood to Lititz, Ephrata, and Lancaster where he had a good market. The logs he hauled to the saw mills on Middle and Hammer Creeks and sold them. There was a good demand for his heavy timber, which he sold all over the neighborhood for building purposes, and on several occasions he delivered very heavy timber at Lancaster, whence it was shipped by rail to Philadelphia for ship building. After his own farm was cleared and brought under cultivation, he bought tracts of woodland from his neighbors and cut and marketed the timber. He was an intelligent and progressive farmer. He procured the first thrashing machine used in that locality, with which he did the thrashing for his neighbors, his brother Levi being his assistant. Before they had this machine they used to tramp the grain out with horses on the barn floor, and to separate the chaff from the grain, they threw the chaff and grain with a shovel towards the wind on the barn floor.

In 1846 he and his wife went for a trip to Canada to visit his brothers John and Sem and his sister Mary.

Having prospered greatly in his business, when his son Aaron married in 1856 he retired from active farming, rented the farm to Aaron and built a brick addition to his stone farm house to which he removed. His other son, John, was away from home working as bookkeeper and assistant in the store of S. B. Myers at Rothsville. In 1858, after the marriage of his son John, he bought a property in Brunnerville and started John up in a general store there. In 1868, Aaron having decided to go into the manufacture of agricultural implements at Brunnerville, gave up the farm, and Ezra then continued to rent it to different parties until 1876, when he sold it to Henry S. Brubaker for \$20,000.00, and removed to Brunnerville, where he erected for himself a comfortable two-story brick residence, between the residences of his two sons. Here he and his wife continued to reside in comfort and ease during the remainder of their lives.

His wife, Mary Bauman, commonly called Polly or Aunt Polly, was one of a large family, and was born July 25th, 1808. Her parents were Seventh Day Baptists. She was left an orphan when quite young and was brought up by her elder brothers, spending a large part of the time amongst the old Cloister buildings at Ephrata. Although never at school after becoming ten years of age, she could read and write well, was an excellent cook and baker and knew family remedies among herbs for almost every sickness, having gathered herbs when a girl for her brother Doctor Jacob Bauman. She was very fond of flowers, always had a great variety of them and knew the name of nearly every plant growing in that locality. In youth she was very short and slim, but as she grew old she became very stout. She died on the 22nd day of August, A.D. 1886, and was laid to rest in the cemetery adjoining the Hammer Creek Meeting-house, thus leaving her husband alone. After the death of his wife, Ezra continued to keep house until his death, which took place after an illness of six months, on the 3rd day of November, 1891, and was placed at rest beside his wife in the Hammer Creek Mennonite cemetery. He had only two children, Aaron Bauman and John Bauman. In business he was a shrewd, careful man, not given to speculating or having wild ideas for "quick-getting-rich," but by patient and persevering industry and saving he became well off and provided well for his two sons. In politics he was first an anti-Macon, then a Whig and the rest of his life a staunch Republican. In religion he was always an adherent of the Mennonite church, but did not actually join until his old age, when he and his wife were baptized in the Hammer Creek Meeting-house.

Aaron Bauman Wissler, elder son of Ezra Wissler<sup>1</sup> and his wife Mary Bauman, was born in the little log house on the old Groff homestead on the west bank of Middle Creek, Clay Township, Lancaster County, Pa., on the 24th day of August, A.D. 1832. He lived at home on his father's farm until he became twenty-five years of age and during his boyhood received a good practical education in the common schools. He grew to be a tall, stout, strongly built man and was of great assistance to his father in



clearing the land and marketing the timber. In 1856 he was married to Leah, the eldest daughter of John (Hersherberger) Keller and Cassia (Royer) Keller, who was born on the 6th day of September, A.D., 1835. This union has been blessed by two children, John Keller Wissler<sup>6</sup> and Anna Mary Wissler.<sup>6</sup> After his marriage his father rented the farm to him and Aaron continued as tenant to work his father's farm until 1868 during which time both of his children were born. In 1868, having made some inventions in the manufacture of mowers, he gave up the farm and removed to Brunnerville, where he and his father-in-law, John H. Keller, bought the foundry and machine shop there from Peter Brunner, and he erected a large and comfortable residence for himself on fifteen acres of land which he purchased there. He and Mr. Keller carried on the business for some years, when Mr. Keller retired, and he has continued to carry on the business ever since. On July 31st, 1898, the shops were burned to the ground, but with great energy Aaron had them at once rebuilt and was able to resume business within ninety days. He and his wife are members of the German Baptist Church. He is a large man, six feet one inch high, and at one time weighed nearly three hundred pounds.

John Keller Wissler,<sup>6</sup> son of Aaron B. Wissler<sup>5</sup> and his wife Leah Keller, was born on his grandfather's farm, February 11th, 1857, and on November 2nd, 1882, was married to Lizzie F. Longenecker, second daughter of Abraham B. and Elizabeth (Forney) Longenecker, west of Lititz. She was born April 16th, 1861. They have two children, William Longenecker Wissler<sup>7</sup>, who was born July 22nd, 1883, and is an expert moulder; Edwin Longenecker Wissler<sup>7</sup>, born April 18th, 1895. John K. Wissler<sup>6</sup> has always worked for and assisted his father in the foundry.

Anna Mary Wissler,<sup>6</sup> daughter of Aaron B. Wissler<sup>5</sup> and his wife Leah Keller, was born on the 16th day of January, 1859. She was educated at the public schools and at Linden Hall Seminary, Lititz, Pa., of which she is a graduate. She has artistic ability far above the average and has shown considerable skill as a painter and wood carver. On the 27th day of September, 1883, she was

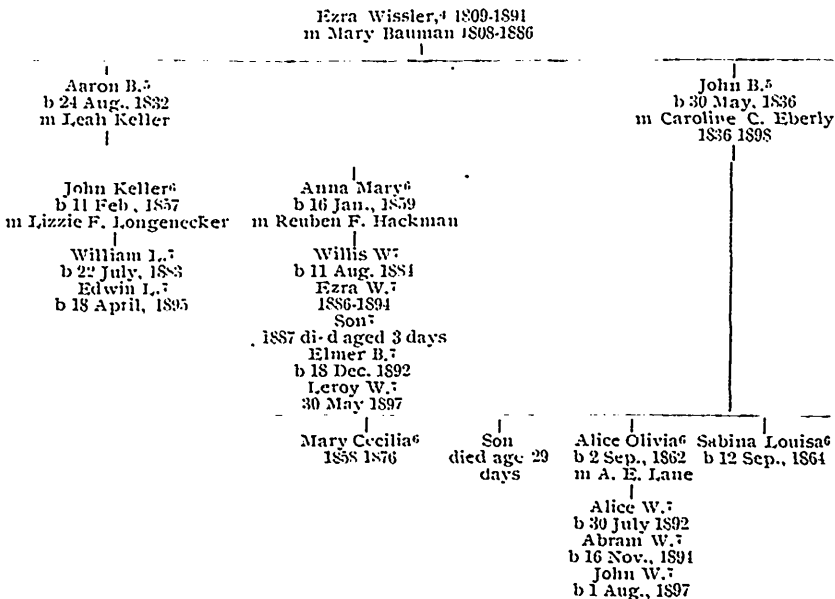
married to Reuben F. Hackman, second son of Peter (Wise) and Elizabeth (Cooper) Hackman of Disston. He assists his father-in-law in the management of the foundry. They have had the following children: Willis Wissler,<sup>7</sup> born 11th August, 1884, became a moulder and this summer graduated with honors from Millersville Normal College; Ezra Wissler,<sup>7</sup> born January 8th, 1886, died March 9th, 1894; infant son, born October 3rd, 1887, died aged three hours; Elmer B.,<sup>7</sup> born December 18th, 1892; Leroy Wissler,<sup>7</sup> born May 30th, 1897.

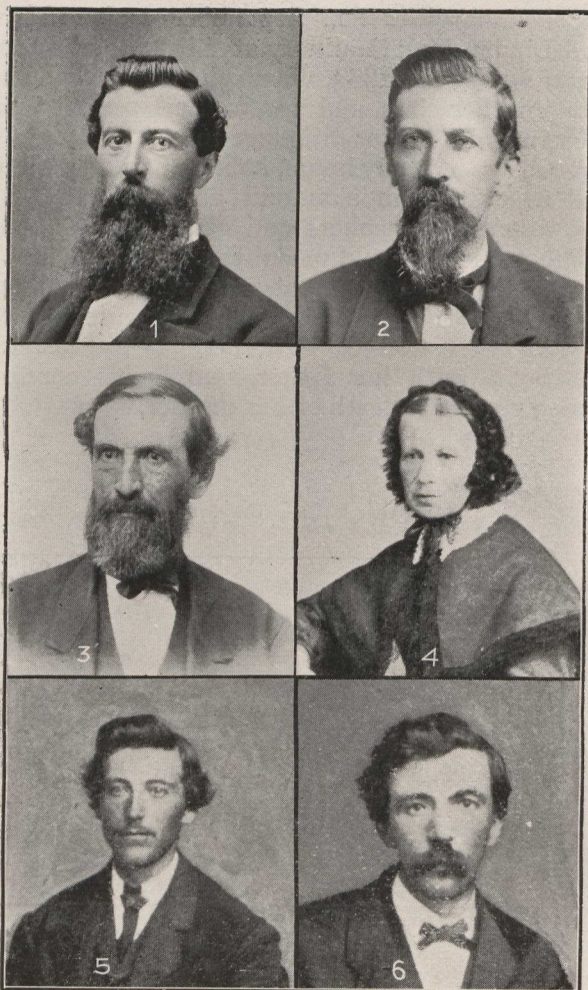
John Bauman Wissler,<sup>5</sup> younger son of Ezra Wissler,<sup>4</sup> and his wife, Mary Bauman, was born May 30th, 1836, on the old homestead. He grew up on the farm and became a tall man. He received his education at the public school, and was a pupil of John Beck at Lititz Academy, after which he was for some time clerk and book-keeper for Samuel B. Myers then of Rothessville, Pa. He also taught school for several sessions. On December 24th, 1857, he was married to Caroline C. Eberly, eldest daughter of Henry and Sabina Markel Eberly, by whom he had four children: Mary Cecilia, who died in her eighteenth year of diphtheria; a son who died an infant of 29 days; Alice Olivia, and Sabina Louisa. In 1858 his father bought a property in Brunnerville and erected a store where John began keeping a general store which he carried on with success until he sold it to his son-in-law, Abram Erb Lane, in 1892. He had Brunnerville post office established in 1861, and held the office of postmaster continuously from that time until 1892. He has been successful in his business and financial dealings. His account books are models of neatness, accuracy and care. After retiring from store keeping in 1892 he continued to reside in his large and comfortable residence adjoining the store, and occupied his time looking after his little farm of five acres and his investments until the spring of 1903, when being unable to obtain a suitable tenant for his store, he has again begun store keeping. He attributes his success to having followed his father's advice, which is here repeated with the hope that it may prove beneficial to the rest of the family. When he commenced business the nearest shipping point was Lancaster City, and in hauling away the produce and

bringing home his store goods he passed through Neffsville. His father asked him whether he usually stopped at the hotel at Neffsville to water his horse and whether he drank anything. He said he did, as he thought it did not look well not to spend anything when stopping at a hotel, that he, however, never took anything stronger than soda water or sarsaparilla. Then his father said: "When a man sets up in business as a hotelkeeper he takes his chances to make a living, and you are not responsible to him for his living." It was really not necessary to water the horse at that place, because there was a public watering trough at Kissel Hill, and horses at work in the fields were deprived of water much longer. His wife Caroline Catherine Eberly was born July 29th, 1836 in Clay Township, Lancaster Co., Pa. She attended the common school and Linden Hall Seminary at Lititz, Pa. She was very industrious, not being idle a moment, and was a careful housekeeper, providing abundantly for the wants of the family. She died May 10th, 1898, after an illness of over four months of gastritis and heart failure, and was buried in Hammer Creek Mennonite Cemetery.

Alice Olivia Wissler,<sup>6</sup> third child of John Bauman Wissler,<sup>5</sup> and his wife, Caroline C. Eberly, was born at Brunnerville, Pa., September 2nd., 1862. She attended Linden Hall Seminary at Lititz from September, 1878 to 1880, and won a gold medal for standing highest in her class. She took a course in Taylor's System of dress-cutting, and cut the patterns for a Philadelphia dressmaker for some time from measures sent to her. She was married to Abram Erb Lane, who bought her father's store, and has the following children: Alice Wissler Lane,<sup>7</sup> born July 30th, 1892; Abram Wissler Lane,<sup>7</sup> born November 16th, 1894; John Wissler Lane,<sup>7</sup> born August 1st. 1897. Mr. Lane carried on the store at Brunnerville until 1900, when he removed to Clay, about 3½ miles farther north, where he bought at a great bargain almost the whole place consisting of two farms, two stores, hotel, blacksmith shop, cigar factory, a lovely residence and several dwelling houses. He runs the store and farm himself and rents the rest of the property.

Sabina Louisa Wissler,<sup>6</sup> the youngest child of John Bauman Wissler,<sup>5</sup> and his wife, Caroline C. Eberly, was born at Brunnerville, Pa., September 12th, 1864. She attended Linden Hall Seminary at Lititz, Pa., from September, 1881 to June 1883, where she attained the highest percentage in her class, and received all perfect marks in room teacher's report for diligence in study hours, habits of diligence out of study hours, habits of order, punctuality, personal neatness, kindness and courtesy towards companions, respect to teachers and observance of rules, for which she received a gold medal from the principal. She won books and a gold medal as first prizes at spelling matches, and in the fall of 1900 won first prize in penmanship at Lancaster County Fair, held at Lancaster. She lives at home with her father, and is his comfort and companion since the death of her mother.





1 Franklin H. Wissler<sup>5</sup>  
3 John Wissler<sup>4</sup>  
5 Levi Wissler<sup>5</sup>

2 Jacob Wissler<sup>5</sup>  
4 Mrs. John Wissler<sup>4</sup>  
6 Aaron Wissler<sup>5</sup>

## JOHN WISSLER<sup>1</sup> AND FAMILY.

John Wissler,<sup>1</sup> son of Jacob Wissler<sup>3</sup> and his wife, Anna Eby,<sup>4</sup> was born on the 31st day of October, 1810, on the old-Groff homestead on the west bank of Middle Creek in Elizabeth, now Clay, Township, Lancaster County, Pennsylvania, and grew up on the farm, becoming a tall, fine-looking man. He received his education at the common schools in the locality, and when a young man became a tanner, serving his apprenticeship in Schoeneck, Lancaster Co., Pa. In 1834 he emigrated to Waterloo Township and County, in what was then called Upper Canada, where he settled on Lot 62, in the German Company's Tract, which he received from his father. At the east corner of the lot, on the west bank of the Grand river, about two miles north of the village of Bridgeport, in the same year, he built a tannery, long known as Eagle Tannery, and subsequently built a large and comfortable brick residence for himself, and a number of workmen's dwellings. Here he resided and carried on a large and profitable business, having Eagle Tannery, a general store, saddler shop, shoe shop and farm until 1857, and speculated largely in lands. On the 22nd day of December, 1835, he married Hannah Heiser, a native of Montgomery Co., Pa., born in 1818. Her parents died when she was a few months old, and she was brought up by her uncle Mr. Tyson at Bridgeport, Ont. They had the following children, all born at Eagle Tannery: Sarah Ann,<sup>5</sup> born April 5th, 1837, died April 7th, 1837; Franklin Heiser,<sup>5</sup> born May 7th, 1838; Jacob,<sup>5</sup> born May 22nd, 1841; Levi,<sup>5</sup> born September 21st, 1843; Aaron,<sup>5</sup> born August 22nd, 1847; Hannah,<sup>5</sup> born April 23rd, 1852; Anna,<sup>5</sup> born March 11th, 1855, died April 14th, 1856, and Angeline,<sup>5</sup> born September 24th, 1856. In 1837 his brother Levi came to Eagle Tannery from Pennsylvania and entered into partnership with him, remaining four years. In 1839 his youngest brother, Sem, also came to Eagle Tannery and worked for him and Levi until 1841,

when, at the request of their father, Levi sold out his interest in the business to Sem and returned to Pennsylvania to take the homestead. In 1845 his sister Mary and her husband, Levi Erb, came to Eagle Tannery, and Mr. Erb, being a currier by trade, was at once taken into the firm. In 1845, as tanbark was getting scarce and dear in that locality, Sem Wissler moved to the Township of Nichol, about sixteen miles farther up the river, where he founded the village of Salem and started a branch of the firm's business, building a tannery, store, saw mill, etc. In 1853 Levi Erb also moved to Salem where he built a stone grist mill. The partnership was carried on at Eagle Tannery under the name of "John Wissler & Co.," and at Salem under the name of "Wissler & Erb" until 1857, the profits being divided in proportion to the amount of capital of each in the business. They did a very large business, employed a great many men and were very successful. They all became British subjects, and John Wissler was for many years a Justice of the Peace. As the country became more settled and cleared, tanbark became scarce and dear, and accordingly, in 1856, John Wissler went up into the Bruce peninsula with the intention of starting another large tannery when he was taken dangerously ill at Durham, and then concluded to sell out and move to a warmer climate. About 1854 Samuel B. Myers, the husband of his niece, Elizabeth H. Wissler,<sup>7</sup> had bought Columbia Furnace, an iron furnace in Shenandoah County, Virginia, to which was attached about 11,000 acres of land and a large number of workmen's dwellings. In the beginning of 1857 John Wissler dissolved the partnership with Sem Wissler and Levi Erb, sold out all his property in Canada and bought Columbia Furnace, Va., to which he at once removed with his family. Bringing his great ability, energy and perseverance to bear on it, he soon made a success of the iron business, and things were going on well when the American Civil War broke out. The greatest fury of the war raged in Shenandoah Valley, and he and his family were obliged in 1862 to abandon all their property and flee at midnight for Canada. Being a comparative stranger, and the only northerner in that locality, and being a strong Republican in politics he had no sympathy or friends there

except his nephew, Samuel B. Myers, who having espoused the cause of the South and being an officer in the Confederate army, gave him timely warning to flee. He left with his wife and younger children about midnight and drove to Winchester, where they took the train and went direct to Salem, Canada. After staying a while at Salem, he went with his family to his old home in Lancaster County, Pa., where they lived with his sister Catherine until the close of the war. After the war they returned to Columbia Furnace, where he at once proceeded to repair the damage caused by the war and to push the business, being ably assisted by his sons. As there was a period of great commercial prosperity after the war, he made money fast and soon made up for his war losses and much more. His health, which had been poor during the latter part of his residence in Canada, was good for a time after moving to Columbia Furnace, but after the war it broke down finally and he died at Columbia Furnace on the 20th day of March, 1870. His remains are buried in a small cemetery which he laid out in a beautiful spot on the top of the hill on the east bank of Stony Creek, overlooking the Furnace. He was a man of good judgment and great ability, energy and shrewdness. He knew the full value of money, was quiet, careful and economical, yet able and ready to embark in great business enterprises at any moment. He was highly respected by all who knew him and greatly loved by his family, his word being law to every member of it. In religion he was a Universalist and in politics a Republican. He left his wife Hannah and six children to mourn his loss. His wife continued to reside in the same house at Columbia Furnace, her youngest daughter, Angelina, always living with her, until the winter of 1888, when it was destroyed by fire. In the sudden change of residence she took a cold which brought on other complications from which she died on the 15th day of February, 1888, and was laid to rest beside her husband. She was a woman of small stature and of quiet, retiring disposition, but a power in her own house and greatly loved and respected by her family and all who knew her. She was one of the kindest of women. After the death of John Wissler the business was continued, as theretofore, under



the name of "John Wissler & Sons," by his family, his eldest son being the general manager. They subsequently bought Liberty Furnace, farther up Stoney Creek and adjoining Columbia. They carried on the business successfully until 1883, when they sold out the whole property, including the furnaces, for \$260,000.

Franklin Heiser Wissler,<sup>3</sup> son of John Wissler<sup>1</sup> and his wife Hannah Heiser, was born at Eagle Tannery, in the Township and County of Waterloo, in what was then called Upper Canada, on the 7th day of May, A.D. 1838. He received his education at the common school, Hamilton Grammar School, and Clinton Institute, Clinton, N.Y. In 1857 he accompanied his parents to Columbia Furnace, Va., where he at once took an active part in the working and management of the furnace, becoming an expert in the business. In 1860 he married his cousin Mary Anna Erb, the elder daughter of Levi Erb and his wife Mary Wissler,<sup>4</sup> by whom he had the following children: John Levi,<sup>6</sup> born June 26th, 1861; Mary Hannah,<sup>7</sup> born June 29th, 1863, died April 11th, 1865, at Salem, Ontario; Franklin Erb,<sup>8</sup> born July 5th, 1865; Ida,<sup>9</sup> born February 13th, 1872, died December 20th, 1872. During his father's life he was his father's principal assistant in running the furnace. After the war broke out he went to Salem, Ontario, where he resided with his wife's parents until the close of the war and while there assisted Mr. Erb in the mill. At the close of the war he returned with his family to Columbia Furnace, Va. After his father's death in 1870 he became head of the firm and general manager of the business, which position he held with great success until 1883, when Columbia and Liberty Furnaces were sold. After the sale of the furnaces he and his brother-in-law, Dr. R. W. Stone, bought out a paper mill in Winchester, Virginia, and removed there. About 1888 they sold out the paper mill, and in 1892 he and his sons bought a large farm of about 1200 acres, called Strathmore, two miles from Mount Jackson, in Shenandoah County, Va., to which he and his wife and sons removed. He has resided there ever since. On April 17th, 1901, he suffered a severe bereavement in the death of his wife.

John Levi Wissler,<sup>6</sup> son of Franklin H. Wissler,<sup>5</sup> and his wife, Mary Anna Erb,<sup>5</sup> was born at Columbia Furnace, Va., on the 26th day of June, A.D. 1861. He received his education at Winchester, Va., and the University of Virginia. He married Ada Partlow, of Rappahannock Co., Va., by whom he has the following children: Mary Ada,<sup>7</sup> born June 1st, 1885; Maud,<sup>7</sup> born September 22nd, 1887; and John Levi,<sup>7</sup> born June 16, 1889. He assisted in the paper mill at Winchester, and now resides at Strathmore, Mount Jackson, Va., where he assists in the management of the farm.

Franklin Erb Wissler,<sup>6</sup> son of Franklin H. Wissler,<sup>5</sup> and his wife, Mary A. Erb,<sup>5</sup> was born at Salem, Ontario, on the 5th day of July, 1865. He attended school at Winchester, Va., and after his father bought Strathmore he married Caroline Hickman, daughter of Dr. J. T. Hickman, of Shenandoah Co., Va., by whom he has the following children: Franklin Hickman,<sup>7</sup> born July 8th, 1896; Harold Erb,<sup>7</sup> born October 1st, 1898. He resides at Strathmore, his father and he occupying the same house.

Jacob Wissler,<sup>5</sup> son of John Wissler,<sup>4</sup> and his wife, Hannah Heiser, was born at Eagle Tannery, in Waterloo Township and County, Canada, on the 22nd day of May, 1841. He received his education at the common schools and at the Elora Grammar School, then taught by Rev. John G. McGregor. He went with his parents to Virginia in 1857. During the early part of the war he acted as a scout for the Northern army, and his activity in the war had considerable to do with rousing the Southerners to drive them from Columbia. On the 28th day of September, 1865, he married Mary Devitt, a daughter of Barnabas Devitt, of Waterloo Township, Ontario, born on the 1st day of February, 1844. They have the following children: William Franklin,<sup>6</sup> born August 19th, 1866; Arthur Jacob,<sup>6</sup> born October 8th, 1871; Edwin Devitt,<sup>6</sup> born September 22nd, 1873; Gertrude Angeline,<sup>6</sup> born August 16th, 1875; Bertha Estella,<sup>6</sup> born January 9th, 1878.

He learned the iron business thoroughly, and usually managed Mount Torry and Liberty Furnaces. He is a born speculator and deserves the most credit for the successful sale of the furnaces. After the sale of the furn-

aces he worked a foundry at Edinburg, Va., for some years. He now resides near Lyndhurst, Augusta, Va., where he and two of his sons own and operate a flour mill and farm. His three youngest children are unmarried and reside at home.

William Franklin Wissler<sup>5</sup> son of Jacob Wissler,<sup>5</sup> and his wife, Mary Devitt, was born on the 19th day of August, 1866, and became a physician. He was married on the 7th day of May, 1890, to Elizabeth Mayer, of Lancaster City, Pa., born February 6th, 1867, by whom he has the following children: Mary Isabella,<sup>7</sup> born February 2nd, 1891; Edna Virginia, born December 15th, 1892; Jacob Mayer,<sup>7</sup> born November 4th, 1894; Elizabeth Mayer,<sup>7</sup> born October 26th, 1897. He resides at Lancaster City, Pa., where he practises his profession.

Arthur Jacob Wissler,<sup>6</sup> son of Jacob Wissler<sup>5</sup> and his wife, Mary Devitt, was born on the 8th day of October, 1871, and became a druggist and for a time carried on business at Philadelphia, Pa. On the 6th day of January, 1898, he married Susan Mellin, by whom he has one child, Jessie Mellin,<sup>7</sup> born February, 1900. He now resides near Lyndhurst, Virginia, where he, his father and brother, Edwin D., operate a mill and farm.

Levi Wissler<sup>5</sup>, son of John Wissler<sup>4</sup>, and his wife, Hannah Heiser, was born at Eagle Tannery on the 21st day of September, 1843, and received his education at the common school and Elora Grammar School. During the war he lived mostly at Salem, Ontario clerking in the store of his uncle, Sem Wissler<sup>4</sup>. After the war he married Sarah Hele, daughter of Henry Hele, of Elora, Ontario, by whom he has the following children, all born at Columbia Furnace, Va.: William Grant,<sup>6</sup> born July 7th, 1869; Harriet,<sup>6</sup> born June 23rd, 1871; Robert,<sup>6</sup> born July 26th, 1873; Olive,<sup>6</sup> born November 13th, 1876, and Clarence H.,<sup>6</sup> born February 8th, 1887. After leaving Columbia Furnace, Va., in 1883, he and his brother Aaron removed to Bellefontaine, Ohio, where they have ever since resided, carrying on a large store. Two of his children, William G. and Clarence H. are unmarried and assist in the store.

Harriet Wissler,<sup>6</sup> daughter of Levi Wissler<sup>5</sup> and his wife, Sarah, was born at Columbia Furnace, Va., on the 23rd day of June, 1871. She was married to George W. Guy to whom she has one child, Walter Wissler Guy,<sup>7</sup> born March 27th, 1900. They live in Sidney, Ohio, where Mr. Guy works in a hardware store.

Robert Wissler,<sup>6</sup> son of Levi Wissler<sup>5</sup> and his wife, Sarah, was born on the 26th day of July, 1873, at Columbia Furnace, and married Gertrude Roach. He lives at Bellefontaine, O., and works in his father's store.

Olive Wissler,<sup>6</sup> daughter of Levi Wissler<sup>5</sup> and his wife, Sarah, was born on the 13th day of November, 1876, at Columbia Furnace, Va., and is married to Lee J. Roebuck, one of the editors of "The Daily and Weekly Index" of Bellefontaine, Ohio.

Aaron Wissler,<sup>5</sup> son of John Wissler<sup>4</sup> and his wife, Hannah Heiser, was born at Eagle Tannery on the 22nd day of August, 1847. He was married on the 25th day of May, 1869, at Columbia Furnace, Va., to Emily Hele, daughter of Henry Hele of Elora, Ont. He worked in the store at Columbia Furnace. After the sale of the furnace in 1883, he and his brother Levi moved to Bellefontaine, Ohio, where they have carried on a large store ever since. They have three children: Nellie,<sup>6</sup> born April 21st, 1872; Lillie,<sup>6</sup> born July 6th, 1874, and Henry,<sup>6</sup> born March 15th, 1880. Henry is unmarried and at home.

Nellie Wissler,<sup>6</sup> daughter of Aaron Wissler<sup>5</sup> and his wife, Emily, was born on the 21st day of April, 1872, at Columbia Furnace, Va., and is married to Morgan Nichols, of Bellefontaine, O., to whom she has one child, Francis,<sup>7</sup> born January 4th, 1896.

Lillie Wissler,<sup>6</sup> daughter of Aaron Wissler<sup>5</sup> and his wife, Emily, was born on the 6th day of July, 1874, and is married to Loran A. Irwin. They live in Kansas City, Mo., where he works in a railroad office.

Hannah Wissler,<sup>5</sup> daughter of John Wissler<sup>4</sup> and his wife Hannah Heiser, was born on the 23rd day of April, 1852, at Eagle Tannery, and was married on the 8th day of October, 1872, at Columbia Furnace, Va., to Dr. T. H. Armstrong, a Canadian, then practising medicine at Columbia Furnace. They had the following children:

Walter,<sup>4</sup> born August 15th, 1873, and Howard,<sup>4</sup> born May 17th, 1877. Dr. Armstrong died on the 6th day of March, 1883. After her husband's death Hannah and her two boys, went to reside with her mother and sister Angeline. After her mother's death in 1888, she bought a farm adjoining her sister's farm near Lantz's Mill, Va., and has worked it ever since. She did not keep a separate house, but lived with her sister Angeline, her brother-in-law, Milton Campbell, having erected a residence sufficiently large for both families.

Walter Armstrong,<sup>5</sup> son of Dr. T. H. Armstrong and his wife, Hannah Wissler,<sup>5</sup> was born on the 15th day of August, 1873, at Columbia Furnace, Va. He studied Pharmacy and became a graduate of the Philadelphia College of Pharmacy in 1896. He resides and carries on business at 700 H. Street, N.E., Washington, D.C. He is a bachelor.

Howard Armstrong,<sup>5</sup> son of Dr. T. H. Armstrong and his wife, Hannah Wissler,<sup>5</sup> was born May 17th, 1877, at Columbia Furnace, Va. He studied medicine and graduated at the University of Maryland in 1900. He practises his profession at Edom, Va. On the 9th day of September, 1902, he was married to Miss A. V. Masters.

Angeline Wissler,<sup>5</sup> daughter of John Wissler<sup>4</sup> and his wife, Hannah Heiser, was born at Eagle Tannery, Canada West, on the 24th day of September, 1856. She was married on the first day of October, 1874, to Milton M. Campbell then a clerk in the store at Columbia Furnace, Va. As her mother did not wish to be left alone, she and her husband continued to reside with her mother until her mother's death in 1888. They have two children, Horace,<sup>6</sup> born July 18th, 1875, and Margaret,<sup>6</sup> born October 8th, 1876. After her mother's death Mr. Campbell bought a farm near Lantz's Mill, on which he built a large and comfortable dwelling house, to which they removed and where they still reside.

Horace Campbell,<sup>6</sup> son of Milton M. Campbell and his wife, Angeline Wissler,<sup>5</sup> was born on the 18th day of July, 1875, at Columbia Furnace, Va. He graduated A.M. of Randolph Macon College, Ashland, Virginia, in 1897, after

which he took a three years' post graduate course at Johns Hopkins University, Md. He is Principal of Danville Military Institute of Danville, Va. He is unmarried.

Margaret Campbell,<sup>6</sup> daughter of Milton M. Campbell and his wife, Angeline Wissler,<sup>5</sup> was born on the 8th day of October, 1876, at Columbia Furnace, Va. She was married on the 15th day of August 1901, to E. M. Hickman, son of J. T. Hickman, of Shenandoah County, Va. They reside on the farm with her parents.

John Wissler<sup>1</sup> Oct. 31, 1810 - March 20, 1870  
 m Hannah Heiser 1818 - Feb. 15, 1888

Sarah Ann <sup>2</sup> 7 April, 1837- 5 April, 1837	Franklin Heiser <sup>2</sup> b 7 May, 1838 m 1859	Jacob <sup>2</sup> b 22 May, 1811 m 1865	Levi <sup>2</sup> b 21 Sept., 1813 m Sarah Hele	Aaron <sup>2</sup> b 22 Aug., 1817 m 25 May, 1869	Hannah <sup>2</sup> b 23 April, 1852 m 8 Oct., 1872 Dr. T. Arm- strong d 6 March, 1883
---	---	--	---	---	---

Anna <sup>3</sup> b 11 March, 1855 d 14 April, 1856	Angeline <sup>3</sup> b 24 Sept., 1856 m 1 Oct., 1874 Milton M. Campbell	Walter <sup>3</sup> b 15 Aug., 1873	Howard <sup>3</sup> b 17 May, 1877 m 9 Sept., 1902 A. V. Masters
---	--	--	---

Horace <sup>3</sup> b 18 July, 1875	Margaret <sup>3</sup> b 8 Oct., 1876 m 15 Aug., 1901 Edward M. Hickman
--	---

John Levi<sup>4</sup>  
b 26 June, 1861  
m Ada Partlow

Mary H.<sup>4</sup>  
b 29 June, 1863  
d 11 April, 1865

Franklin Erb<sup>4</sup>  
b 5 July, 1865  
m  
Carolne Hickman

Ida<sup>4</sup>  
13 Feb. - 20 Dec.  
1872

Mary Ada<sup>5</sup>  
1 June, 1885  
Maude<sup>5</sup>  
22 Sept., 1887  
John Levi<sup>5</sup>  
16 June, 1889

Franklin Hickman<sup>5</sup>  
8 July, 1896  
Harold Erb<sup>5</sup>  
1 Oct., 1898

Jacob<sup>5</sup>  
b 22 May, 1841  
m 1865  
Mary Devitt

William F.<sup>6</sup>  
b 19 Aug., 1866  
m 7 May, 1890  
Elizabeth Meyer  
b 19 Aug., 1866

Arthur J.<sup>6</sup>  
8 Oct., 1871  
m 6 Jan., 1898  
Susan Mellin

Edwin D.<sup>6</sup>  
22 Sept., 1873

Gertrude A.<sup>6</sup>  
16 Aug., 1875

Bertha E.<sup>6</sup>  
9 Jan., 1878

Mary Isabella<sup>7</sup>  
2 Feb., 1891  
Edna V.<sup>7</sup>  
15 Dec., 1892  
Jacob M.<sup>7</sup>  
4 Nov., 1891  
Elizabeth M.<sup>7</sup>  
26 Oct., 1897

Jessie Mellin<sup>7</sup>  
Feb., 1900

Levi<sup>6</sup>  
b 21 Sept., 1843  
m Sarah Hele

William G.<sup>6</sup>  
7 July, 1869

Harriet<sup>6</sup>  
23 June, 1871  
m G. W. Guy

Robert<sup>6</sup>  
26 July, 1873  
m  
Gertrude de Roach

Olives<sup>6</sup>  
13 Nov., 1876  
m L. J. Roebuck

Clarence H.<sup>6</sup>  
8 Feb., 1887

Walter Wissler<sup>7</sup>  
27 March, 1900

Aaron<sup>6</sup>  
b 22 Aug., 1847  
m 25 May, 1869  
Emily Hele

Nellie<sup>6</sup>  
b 21 April, 1872  
m Morgan Nichols

Lillie<sup>6</sup>  
b 6 July, 1874  
m Lorán A. Irwin

Henry<sup>6</sup>  
15 March, 1880

Francis<sup>7</sup>  
b 4 Jan., 1896





## CATHERINE WISSLER.<sup>2</sup>

Catherine Wissler,<sup>1</sup> daughter of Jacob Wissler,<sup>3</sup> and his wife, Anna Eby, was born on the 10th day of November, 1812, on the old Groff homestead, on the west bank of Middle Creek, Lancaster County, Pa. She grew up on the farm to be an unusually tall woman. Being the eldest daughter unmarried at the time of her mother's death, in 1829, on her devolved the duty and responsibility of keeping house for her father and taking care of her younger brothers and sister. She had a good offer of marriage, but at her father's urgent request she remained unmarried and took care of her father till his death, in 1853. After her father's death, being in poor health, probably occasioned by her long and trying care of him, she went to Canada, spending the winter of 1854-5 at Salem, with her sister Mary and brother Sem. She received, from her father, the little brick house across the road from the old house, and there resided for the rest of her life. She was kindly cared for by her brother Levi, and his family, but always persisted in sleeping in her own house at night. She died on the 29th day of October, 1865, and was buried near her parents in the Hammer Creek Mennonite cemetery, where a simple stone marks her grave. Her house and plot of ground now belongs to Levi Hess Wissler.<sup>5</sup>

Mary Wissler,<sup>4</sup> daughter of Jacob Wissler<sup>3</sup> and his wife, Anna Eby, was born on the old homestead on the west bank of Middle Creek, in Elizabeth, now Clay, Township, in Lancaster County, Pa., on the 21st day of February 1815, and grew up on the farm to be a tall, fine-looking woman. In 1836 she was married to Levi Erb, a native of Lancaster County, and settled on a farm between Lexington and Lititz, Pa., which they received from her father. Here her two children were born, namely: Mary Anna, on the 17th day of October, 1837; and Elizabeth, on the 24th day of May, 1842. In 1845 they sold out, owing to Mr. Erb's being obliged to pay a large amount of money for



1 Levi Erb                      2 Mrs. Levi Erb (Mary Wissler<sup>4</sup>)  
 3 Mrs. F. H. Wissler<sup>5</sup>      4 Mrs. Stone (Elizabeth Erb<sup>5</sup>)  
    Residence of John R. Wissler.<sup>5</sup> Built by Levi Erb.

which he had gone his father's security. This seemed a great misfortune at the time, but was really a blessing, as it was the means of inducing them to emigrate to Canada. They arrived at Eagle Tannery, in Waterloo Township and County, Canada, in 1845, and Mr. Erb, being a practical currier, was at once taken into the business then carried on by his brothers-in-law, John and Sem Wissler, under the name of "John Wissler & Co." They continued to reside at Eagle Tannery until 1853, when they moved to Salem, in the Township of Nichol, in the County of Wellington, where Sem Wissler had begun to build a stone grist mill for him, on the north-east side of the Irvine River, on the southeast side of what is now Woolwich St., Salem. He purchased the south-westerly 37 acres of Lot 16, concession 11, Nichol, from Sem Wissler and finished the building of the mill. Mr. Erb devoted all his energies to the working of this mill from 1853 until 1866. The partnership was carried on by John and Sem Wissler and Levi Erb at Eagle Tannery under the name of "John Wissler & Co.," and at Salem under the name of "Wissler & Erb," until the year 1857, John Wissler managing the business at Eagle Tannery, Sem Wissler the tannery, shoe shop, saw mill, store and farm at Salem, and Levi Erb his mill at Salem. In 1856 Levi Erb built his large stone residence on the side of a steep hill overlooking his mill, on a triangular piece of ground bounded by Woolwich, Union and Washington streets. They were very successful, did a large business and made a lot of money. After the dissolution of partnership in 1857, Mr. Erb continued to work his mill alone with great success until 1866, when he sold his mill to Jacob B. Eby,<sup>5</sup> son of Benjamin Eby,<sup>4</sup> and his residence to John R. Wissler,<sup>5</sup> and moved to Columbia Furnace, Virginia, whither John Wissler had preceded him in 1857. After the Russian war there was a period of great financial depression, and to make it worse the frost destroyed the wheat. Mr. Erb imported wheat, ground it in his mill and sold the flour to the people on credit, for which he was long remembered in the Township of Peel as the "good Samaritan." He was one of the kindest of men but liked a quiet joke. There was on his mill a glass cupola on which was a weather

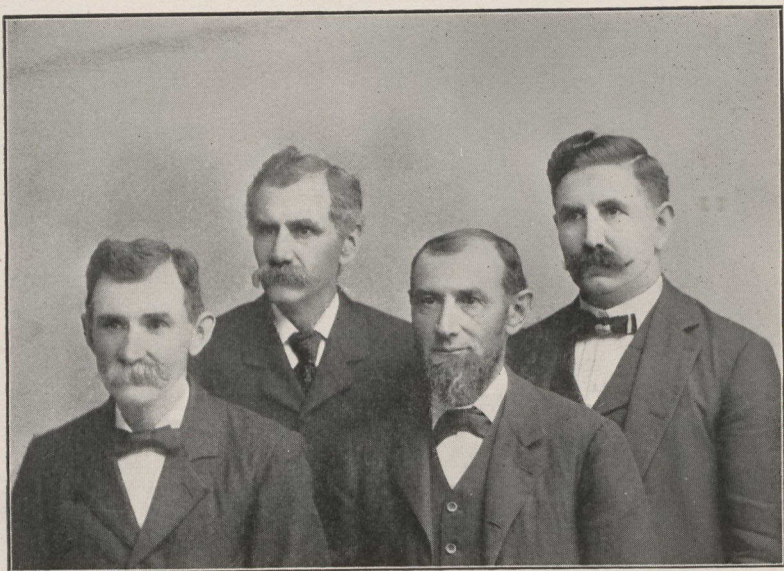
vane with the letters indicating the points of the compass. One day a man pointed up at the letters and asked Mr. Erb what they meant. He replied, "W" is for Wissler, "E" for Erb, "S" for Salem, "N" for Nichol—"Wissler & Erb, Salem, Nichol,"—and then quietly chuckled and added "Yes, yes," which, being long drawn out, was a favorite expression of his at all times. They had a beautiful home and thought they were settled for life, but it was not to be. On the 18th of September, 1860, their elder daughter, Mary Anna, was married to her cousin, Franklin Heiser Wissler,<sup>3</sup> and went to Columbia Furnace, Virginia, to reside, and in 1866 their younger daughter, Elizabeth, was married to Dr. Robert Wynn Stone, a young physician who had lately begun the practice of his profession in Salem. There being a good opening for a physician at Columbia Furnace, Dr. Stone was induced to go, and Mr. and Mrs. Erb, with much regret, sold out their mill and beautiful home and went along with them. Mr. Erb never afterwards went into business, but occupied his attention looking after his investments. They visited Salem two or three times after leaving. Owing to the delicate state of Mrs. Erb's health they never had a separate residence at Columbia Furnace, Va., but lived with their elder daughter until the death of Mrs. Erb on the 30th day of October, 1872. She was buried in a small cemetery which had been set apart by John Wissler<sup>4</sup> on the top of the hill on the east bank of Stoney Creek and overlooking Columbia Furnace. She was a quiet, calm woman of great strength of character and business ability. Her house was a model of neatness and order. She was a helpmeet for her husband in her home and in all his business transactions. After the death of his wife Mr. Erb continued to reside during the rest of his life with his daughters, but mostly with his elder daughter. He moved with them to Winchester in 1883, and then to Strathmore, near Mount Jackson, Va., where he died at the home of his elder daughter on the 25th day of July, 1893, in his 83rd year, and was buried beside his wife at Columbia Furnace, Va. He was a good man, of the kindest disposition, very cautious, no speculator, with a knowledge of the value of money and the ability to save it.

Mary Anna Erb,<sup>5</sup> daughter of Levi Erb and his wife, Mary Wissler,<sup>4</sup> was born on the 7th day of October, 1837, on her parents' farm near Lexington, Lancaster Co., Pa. In 1860 she was married at Salem to her cousin, Franklin Heiser Wissler,<sup>5</sup> to whom she had several children, but only two, John Levi Wissler<sup>6</sup> and Franklin Erb Wissler,<sup>6</sup> survive. She died at Strathmore on the 17th day of April, 1901, and was buried near her sister Elizabeth at Winchester, Va. She was much like her mother in disposition, and a model daughter, wife and mother.

Elizabeth Erb<sup>5</sup> daughter of Levi Erb and his wife, Mary Wissler,<sup>4</sup> was born on the 24th day of May, 1842, on her parents' farm near Lexington, Lancaster Co., Pa. She was married at Salem, Ont., on the 23rd day of September, 1866, to Robert Wynn Stone, M.D., a physician born in Canada, who had shortly before begun the practice of his profession at Salem. They removed after their marriage to Columbia Furnace, Va., where for a time Dr. Stone practised his profession. He then entered the firm of John Wissler & Sons, and kept the firm's books until the furnace was sold in 1883, when he removed to Winchester, Va., where he joined with his brother-in-law, Franklin H. Wissler, in the purchase and conduct of a paper mill. They had three children, all born at Columbia Furnace, Mary Erb Stone,<sup>6</sup> born July 30th, 1867; Edgar Erb Stone,<sup>6</sup> born September 25th, 1869, and Edith Erb Stone,<sup>6</sup> who died an infant. Mrs. Stone died at Winchester, Va., on the 3rd day of April, 1895, after a long illness, and was buried at Winchester. Dr. Stone and his two children, neither of whom is married, still reside at Winchester, Va.







Levi H. Wissler,<sup>5</sup> Jacob H. Wissler,<sup>5</sup> John H. Wissler,<sup>5</sup> Samuel H. Wissler,<sup>5</sup>



The Old Wissler Homestead, built about 1750.  
Residence of Levi H. Wissler.<sup>5</sup>

## LEVI WISSLER.<sup>4</sup>

Levi Wissler,<sup>4</sup> son of Jacob Wissler<sup>3</sup> and his wife, Anna Eby, was born on the 3rd day of January, A.D. 1817, on the old Groff homestead on the west bank of Middle Creek in Elizabeth, now Clay, Township, Lancaster County, Penn., and grew to manhood on the farm, becoming a tall, thin man. In 1837 he went to Canada where his brother John Wissler<sup>4</sup> had already built Eagle Tannery on the west bank of the Grand River, about two miles north of the village of Bridgeport in the Township and County of Waterloo in Upper Canada. He entered into partnership with his brother John at Eagle Tannery and was very successful. In 1839 his youngest brother Sem also came to Canada, attracted by their success and probably not relishing the work on the farm at home. In 1840 his father came to Canada for the purpose of inducing either him or Sem to return home and take the homestead which Ezra Wissler<sup>4</sup> was giving up in the end of that year. As Sem positively refused to return, he at his father's urgent request, went back to Pennsylvania and received the old homestead with about 142 acres of land. For a short time he leased the farm and worked for other people, and then for a couple of years he boarded in the old house with his hired man. On the 30th day of December, 1845, he married Fanny, daughter of Christian and Barbara (Huber) Hess of Warwick Township, Lancaster County, Penn., who was born on the 7th day of September, 1827, and by her had the following children: Anna Hess,<sup>5</sup> born December 20th, 1846; Barbara Hess,<sup>5</sup> born June 26th, 1848; John Hess,<sup>5</sup> born April 6th, 1850; Levi Hess,<sup>5</sup> born February 7th, 1852; Jacob Hess,<sup>5</sup> born October 2nd, 1853; Christian Hess,<sup>5</sup> born August 29th, 1855, died September 2nd, 1855; Fanny Hess,<sup>5</sup> born September 18th, 1856; Catherine Hess,<sup>5</sup> born September 7th, 1859; Mary Hess,<sup>5</sup> born March 27th, 1862; Samuel Hess,<sup>5</sup> born April 17th, 1864; Henry Hess,<sup>5</sup> born October 31st, 1866, died September 15th, 1868, and Hannah Hess, born March 30th, 1869, died



July 20th, 1886. He was very successful in his farming operations and land speculations, buying, improving and selling farms so that he was able to give each of his nine children who grew up a good start in life. He divided his home farm between his two eldest sons, John Hess<sup>5</sup> and Levi Hess.<sup>5</sup> To John he gave the northerly part on which he built a good house and barn, and to Levi Hess<sup>5</sup> he gave the southerly half on which is the old stone house erected by John Groff, probably about 1750. He died on the 14th day of July, 1881, and was buried near his parents in Hammer Creek Mennonite Cemetery, where a plain marble slab marks his grave. He was a strict Mennonite, and a just, shrewd, careful, business man of sound judgment and great strength of character. After his death his widow moved to Brunnerville, about three miles away, on the road to Lititz, and resided there until her death, which occurred on the 23rd day of February, 1895. She was buried beside her husband in the Hammer Creek Mennonite Cemetery.

Anna Hess Wissler,<sup>5</sup> daughter of Levi Wissler<sup>4</sup> and his wife, Fanny Hess, was born on the 20th day of December, 1846, on the old homestead where she grew up and was married on the 13th day of November, 1870, to Samuel P. Zimmerman, son of Samuel and Susanna (Blench) Zimmerman, of Cumberland County, Pa., who was born on the 31st day of October, 1842. They live on a farm near Shiremanstown, Cumberland County, Pa., and have the following children: Minnie Wissler Zimmerman,<sup>6</sup> born January 23rd, 1875; Elam H. Zimmerman,<sup>6</sup> born April 18th, 1882; Owen J. Zimmerman,<sup>6</sup> born June 30th, 1884; Christian W. Zimmerman,<sup>6</sup> born December 16th, 1887.

Minnie Wissler Zimmerman,<sup>6</sup> daughter of Samuel P. Zimmerman and his wife, Anna H. Wissler,<sup>5</sup> was born on the 23rd day of January, 1875, and was married on the 22nd day of December, 1898, to Charles S. Strong, of Cumberland County, Pa., to whom she has one child, William M. Strong,<sup>7</sup> born October 12th, 1900.

Barbara Hess Wissler,<sup>5</sup> daughter of Levi Wissler<sup>4</sup> and his wife Fanny Hess, was born on the 26th day of June, 1848, and was married on the 19th day of November,

1868, to Joseph R. Bucher, son of Joseph and Catherine (Risser) Bucher, born May 26th, 1848, to whom she has had the following children: Anna Wissler,<sup>6</sup> born July 17th, 1870; Levi Wissler,<sup>6</sup> born November 23rd, 1872; Joseph Wissler,<sup>6</sup> born December 2nd, 1875, and Henry Wissler,<sup>6</sup> born October 3rd, 1883. They reside about a mile north of Brunnerville, Pa., on a farm which they received from Levi Wissler.<sup>4</sup> Their two younger sons are unmarried and reside at home.

Anna Wissler Bucher,<sup>6</sup> daughter of Joseph R. Bucher and his wife, Barbara H. Wissler,<sup>5</sup> was born on the 17th day of July, 1870, and was married on the 20th day of September, 1891, to Monroe Widder, son of Reuben and Matilda H. Widder, who was born September 15th, 1869. They reside on a farm north of Millway, Pa., and have the following children: Reuben B.,<sup>7</sup> born July 29th, 1892; Catherine B.,<sup>7</sup> born January 29th, 1894; Joseph B.,<sup>7</sup> born July 15th, 1895; Fanny B.,<sup>7</sup> born January 1st, 1897; John B.,<sup>7</sup> born August 17th, 1898, died March 25th, 1901; Barbara B.,<sup>7</sup> born January 14th, 1902.

Levi Wissler Bucher,<sup>6</sup> son of Joseph R. Bucher and his wife, Barbara H. Wissler,<sup>5</sup> was born on the 23rd day of November, 1872, and on the 4th day of December, 1900, was married to Ellen (Eby) Hostetter, born November 28th, 1879, by whom he has one child, Norman Hostetter,<sup>7</sup> born November 12th, 1901. They reside on a farm east of Mannheim, Pa.

John Hess Wissler,<sup>5</sup> son of Levi Wissler,<sup>4</sup> and his wife, Fanny Hess, was born on the 6th day of April, 1850, on the old homestead, and was married on the 7th day of November, 1872, to Maria H., daughter of Jacob E. and Eliza (Hershey) Brubaker, from near Brickerville, who was born on the 8th day of May, 1850, by whom he had one child, Jacob Brubaker Wissler,<sup>6</sup> born September 10th, 1873. He received the northerly part of his father's farm, containing about sixty-five acres, and erected thereon a comfortable house and bank barn. His wife, Maria H., died on the 22nd day of November, 1880, and was buried in Hammer Creek Cemetery. He subsequently married Emma Miller, daughter of Jonas Z. and Mary Ann (Miller) Nolt, of Mannheim Township, near Oregon, Pa., who was

born on the 10th day of June, 1847. By his second wife he has one child, John Nolt Wissler,<sup>6</sup> born February 1st, 1888. After his son, Jacob Brubaker Wissler,<sup>6</sup> grew up he sold the farm to him and retired to Weidmansville, near Lincoln, Pa., where he has a very comfortable and nicely situated home.

Jacob Brubaker Wissler,<sup>6</sup> son of John Hess Wissler<sup>5</sup> and his wife, Maria H. Brubaker, was born on the 10th day of September, 1873, on his father's farm, part of the old homestead, and was married on the 12th day of October, 1897, to Agnes L. Snyder, by whom he has one child, Erla,<sup>7</sup> born March 14th, 1899. He bought his father's farm and now resides there.

Levi Hess Wissler,<sup>5</sup> son of Levi Wissler<sup>4</sup> and his wife, Fanny Hess, was born on the old homestead on the 7th day of February, 1852. He grew up on the farm and was married on the 17th day of November, 1881, to Martha M., daughter of Solomon and Maria (Grossman) Kreider, from near Lititz, Pa., who was born on the 18th day of May, 1860. They have had the following children: Elva M.,<sup>6</sup> born January 1st, 1883; Hannah K.,<sup>6</sup> born July 26th, 1884; James K.,<sup>6</sup> born October 20th, 1886, died November 27th, 1889; Levi K.,<sup>6</sup> born May 10th, 1892; David K.,<sup>6</sup> born March 26th, 1895. He received the portion of the old Groff homestead on which the old house is situated from his father and has lived in the same house all his life. He has in his possession the original title deeds of the property from Penn down through the Groffs and Wisslers to the present time.

Jacob Hess Wissler,<sup>5</sup> son of Levi Wissler<sup>4</sup> and his wife, Fanny Hess, was born on the 2nd day of October, 1853, on the old homestead, where he grew to manhood. On the 31st day of October, 1876, he was married to Ella R., daughter of Samuel and Elizabeth (Reist) Royer, near Akron, Pa., who was born November 20th, 1857. They have the following children: Alvin R.,<sup>6</sup> born October 31st, 1877; Clarence R.,<sup>6</sup> born March 13th, 1879; Samuel Y.,<sup>6</sup> born April 18th, 1882; Elizabeth R.,<sup>6</sup> born April 11th, 1884; Fanny Irene,<sup>6</sup> born August 27th, 1890. They reside on and work a farm north of Ephrata, Pa., adjoining the farm of Jacob W. Landis.<sup>5</sup>

Fanny Hess Wissler,<sup>3</sup> daughter of Levi Wissler<sup>4</sup> and his wife, Fanny Hess, was born on the old homestead on the 18th day of December, 1856, and was married on the 22nd day of December, 1892, to Levi R., son of Levi and Mary (Rupp) Forney, of Lime Rock, Pa., who was born on the 14th day of July, 1849. They have had the following children: a son born December 25th, 1894 and died the same day. Mary Forney,<sup>6</sup> born January 5th, 1897.

Catherine Hess Wissler,<sup>3</sup> daughter of Levi Wissler<sup>4</sup> and his wife, Fanny Hess, was born on the old homestead on the 7th day of September, 1859, and was married on the 21st day of April, 1878, to Dr. Jacob H. Seiling, son of Henry and Elizabeth (Small) Seiling, near Shrewsbury, York County, Pa., who was born January 15th, 1851. They reside at York, Pa., where Dr. Seiling practises his profession and have had the following children: Fanny Wissler,<sup>6</sup> born February 17th, 1879; Mary Cecilia,<sup>6</sup> born December 8th, 1881; Elizabeth Mary,<sup>6</sup> born May 10th, 1884, died October 18th, 1887.

Mary Hess Wissler,<sup>3</sup> daughter of Levi Wissler<sup>4</sup> and his wife Fanny Hess, was born March 27th, 1862, on the old homestead, and was married on the 14th day of September, 1899, to Robert Jones Strong, of Cumberland County, Pa., who was born on the 4th day of March, 1854. They reside on a farm at Cedar Run, about a mile southeast of Shiremanstown, Pa., and have one child, Mary Elizabeth Wissler Strong,<sup>6</sup> born August 16, 1901.

Samuel Hess Wissler,<sup>3</sup> son of Levi Wissler<sup>4</sup> and his wife, Fanny Hess, was born on the 17th day of April, 1864, on the old homestead. He worked for a time for John B. Wissler<sup>3</sup> and is now cashier of Lincoln National Bank, at Lincoln, Pa. He was married on the 27th day of August, 1889, to Sarah A., daughter of Henry B. and Mary G. (Swarr) Stauffer, from near Petersburg, Pa. She was born January 27th, 1863.

Levi Wissler, 13 Jan., 1817—14 July, 1881  
 m 30 Dec., 1845  
 Fanny Hess, 7 Sept., 1827—23 Feb., 1895

Anna Hess Wissler<sup>5</sup>  
 b 20 Dec., 1816  
 m 13 Nov., 1870  
 Samuel P. Zimmerman  
 b 31 Oct., 1842

Barbara Hess W<sup>5</sup>  
 b 20 June, 1848  
 m 19 Nov., 1868  
 Joseph R. Bucher  
 b 26 May, 1818

John Hess W<sup>5</sup>  
 b 6 April, 1850  
 m 7 Nov., 1872  
 Maria H. Brubaker  
 s May, 1850—22 Nov. 1880  
 m 11 Dec., 1883  
 Emma M. Nolt  
 b 10 June, 1847

Jacob Brubaker<sup>6</sup>  
 b 10 Sept., 1873  
 m 2 Oct., 1897  
 Agnes L. Snyder  
 b 1 Feb., 1869

John Nolt<sup>6</sup>  
 b 1 Feb., 1858

Erla<sup>7</sup>  
 b 14 March, 1899

Christian H.<sup>5</sup>  
 b 29 Aug., 1855  
 d 2 Sept., 1855

Fanny H.<sup>5</sup>  
 b 18 Sept., 1856  
 m 22 Dec., 1892  
 Levi R. Forney

Mary<sup>6</sup>  
 b 5 Jan., 1897

Levi Hess<sup>5</sup>  
 b 7 Feb., 1852  
 m 17 Nov., 1881  
 Martha Kreider  
 b 18 May, 1870

Jacob Hess<sup>5</sup>  
 b 2 Oct., 1853  
 m 31 Oct., 1876  
 Ella R. Royer  
 b 20 Nov., 1857

Elva M.<sup>6</sup>  
 b 1 Jan., 1883  
 Hannah K.<sup>6</sup>  
 b 26 July, 1884  
 James K.<sup>6</sup>  
 20 Oct., 1886 - 27 Nov., 1889  
 Levi K.<sup>6</sup>  
 b 10 May, 1892  
 David K.<sup>6</sup>  
 b 26 March, 1895

Alvin K.<sup>6</sup>  
 b 31 Oct., 1877  
 Clarence R.<sup>6</sup>  
 b 13 March, 1879  
 Samuel Y.<sup>6</sup>  
 b 18 April, 1882  
 Elizabeth R.<sup>6</sup>  
 b 11 April, 1884  
 Fanny Irene<sup>6</sup>  
 b 27 August, 1890

Catherine H.<sup>5</sup>  
 b 7 Sept., 1859  
 m 21 April, 1878  
 Dr. Jacob H. Seiling  
 b 15 Jan., 1851

Mary H.<sup>5</sup>  
 b 27 March, 1862  
 m 22 Dec., 1898  
 Robert J. Strong  
 Mary E. W.<sup>6</sup>  
 b 16 Aug., 1901

Samuel H.<sup>5</sup>  
 b 17 April, 1861  
 m 27 Aug., 1889  
 Sarah A. Stauffer  
 b 27 Jan., 1863

Henry H.<sup>5</sup>  
 b 31 Oct., 1866  
 d 15 Sept., 1868

Hannah H.<sup>5</sup>  
 b 30 March, 1869  
 d 20 July, 1886

Fanny W.<sup>6</sup>  
 b 17 Feb., 1879  
 Mary Cecilia<sup>6</sup>  
 b 8 Dec., 1881  
 Elizabeth M.<sup>6</sup>  
 b 10 May, 1884  
 d 18 Oct., 1887

Anna Hess Wissler<sup>5</sup>  
 b 20 Dec., 1816  
 m 13 Nov., 1870  
 Samuel P. Zimmerman  
 b 31 Oct., 1842

Barbara Hess W.<sup>5</sup>  
 b 20 June, 1848  
 m 19 Nov., 1868  
 Joseph R. Bucher  
 b 26 May, 1818

Minnie W.<sup>6</sup>  
 b 13 Jan., 1875  
 m 22 Dec., 1898  
 Charles S. Strong

Elam H.<sup>6</sup>  
 18 Ap., 1882

Owen J.<sup>6</sup>  
 30 June, 1884

Christian W.<sup>6</sup>  
 16 Dec., 1887

William M.<sup>7</sup>  
 b Oct. 12, 1909

Anna W.<sup>6</sup>  
 b 17 July, 1870  
 m 20 Sept., 1891  
 Monroe Widder  
 b 15 Sept., 1869

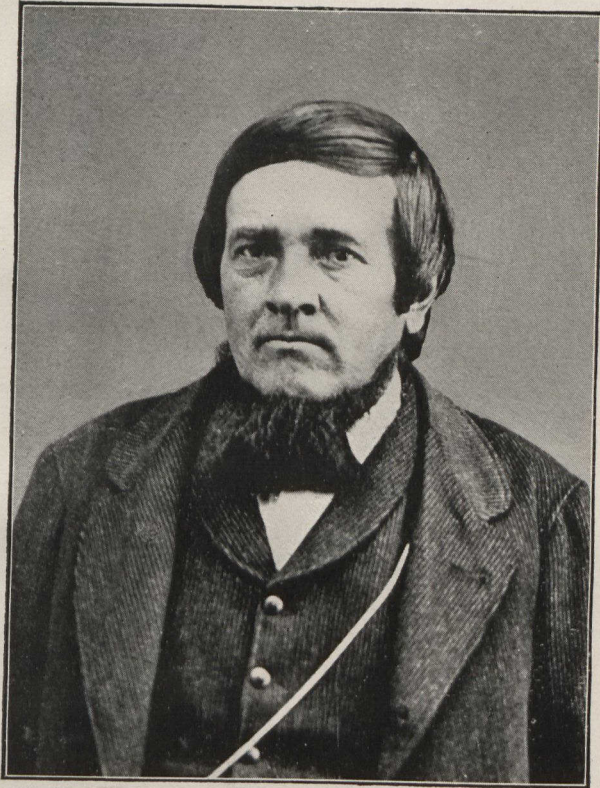
Levi W.<sup>6</sup>  
 b 23 Nov., 1872  
 m 1 Dec., 1900  
 Ellen E. Hostetter  
 b 28 Nov., 1879

Joseph W.<sup>6</sup>  
 b 2 Dec., 1875

Henry W.<sup>6</sup>  
 b 13 Oct., 1883

Reuben B.<sup>7</sup>  
 29 June, 1892  
 Catherine B.<sup>7</sup>  
 29 Jan., 1894  
 Joseph B.<sup>7</sup>  
 15 July, 1895  
 Fanny B.<sup>7</sup>  
 1 Jan., 1897  
 John B.<sup>7</sup>  
 17 Aug., 1898  
 d 25 March, 1904  
 Barbara B.<sup>7</sup>  
 14 Jan., 1904

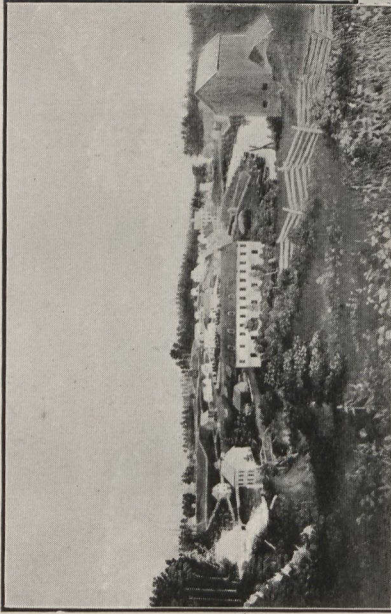
Norman H.<sup>7</sup>  
 12 Nov., 1901



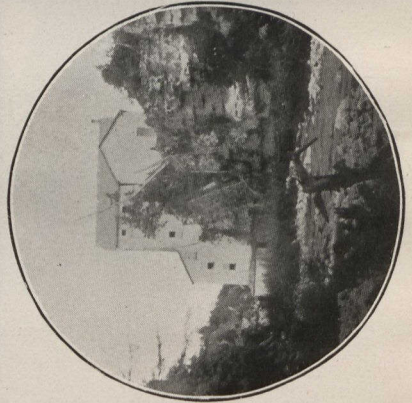
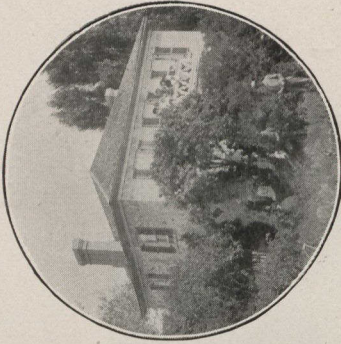
Sem Wissler.4



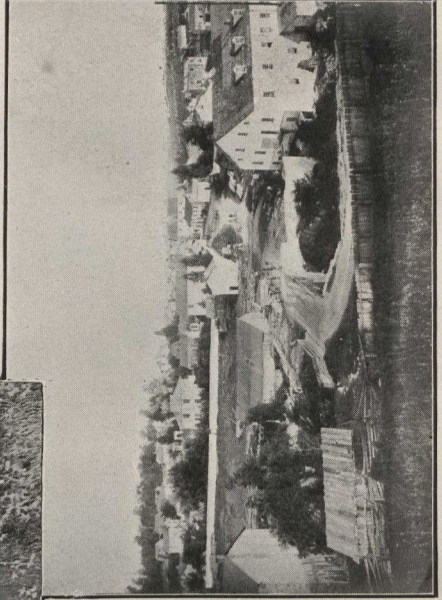
Salem in November 1856.  
From an Oil Painting by late Thomas Common of Elora, Ont.



Residence of Sem Wissler.<sup>4</sup>



Wissler's Mill at Salem.



Salem in 1870.





1. Arthur P. Bigger.<sup>6</sup>  
 4. Levi E. Wissler.<sup>5</sup>  
 7. F. Mary Wissler.<sup>6</sup>  
 10. Mrs. C. H. Bigger (Mary A. Wissler).<sup>5</sup>  
 13. Mrs. Sem Wissler.<sup>4</sup>  
 16. Sem W. Field.<sup>6</sup>  
 19. William S. Wissler.<sup>6</sup>  
 22. K. S. Wissler.<sup>6</sup>  
 2. George S. Wissler.<sup>6</sup>  
 5. John R. Wissler.<sup>5</sup>  
 8. F. Maude M. Wissler.<sup>6</sup>  
 11. Mrs. Ezra Wissler.<sup>5</sup>  
 14. Mrs. L. E. Wissler.<sup>5</sup>  
 17. Mrs. J. R. Wissler.<sup>5</sup>  
 20. V. May Wissler.<sup>6</sup>  
 23. Sem John Wissler.<sup>6</sup>  
 3. Ezra Wissler.<sup>5</sup>  
 6. Sem Wissler.<sup>5</sup>  
 9. Leila W. Bigger.<sup>6</sup>  
 12. Henry Wissler.<sup>5</sup>  
 15. Mrs. G. W. Field (Elizabeth Wissler).<sup>5</sup>  
 18. M. A. Wissler.<sup>6</sup>  
 21. Florence F. M. Bigger.<sup>6</sup>  
 24. Jane Wissler.<sup>6</sup>





1. Mrs. Ezra Wissler.<sup>5</sup>  
 4. Lella W. Bigger.<sup>6</sup>  
 7. Ezra Wissler.<sup>5</sup>  
 10. Mrs. G. W. Field (Elizabeth Wissler.<sup>5</sup>)  
 13. F. Maude M. Wissler.<sup>6</sup>  
 16. Mrs. Henry Wissler.<sup>5</sup>  
 19. Wilfrid Field.<sup>6</sup>

2. Sem W. Field.<sup>6</sup>  
 5. Mrs. C. H. Bigger (M. A. Wissler.<sup>5</sup>)  
 8. Mrs. Levi E. Wissler.<sup>5</sup>  
 11. V. May Wissler.<sup>6</sup>  
 14. Jane Erb Wissler.<sup>6</sup>  
 17. Henry Wissler.<sup>5</sup>  
 20. Sem Wissler.<sup>5</sup>

3. John R. Wissler.<sup>5</sup>  
 6. John B. Wissler.<sup>5</sup>  
 9. Mrs. Sem Wissler.<sup>4</sup>  
 12. Sabina L. Wissler.<sup>6</sup>  
 15. Levi Erb Wissler.<sup>5</sup>  
 18. S. John Wissler.<sup>5</sup>





Sem Wissler.<sup>4</sup>

Mrs. Sem Wissler.<sup>4</sup>

### SEM WISSLER.<sup>4</sup>

Sem Wissler,<sup>4</sup> son of Jacob Wissler<sup>3</sup> and his wife, Anna Eby,<sup>4</sup> was born on the 21st day of March, A.D., 1819, in the old homestead on the west bank of Middle Creek in Clay Township, then part of Elizabeth Township, in Lancaster County, Pa. He grew up on the farm, was educated at the common schools in the locality, and passed his youth as an ordinary farmer's son until he became twenty years of age. His father having retired from active farming in the beginning of 1832, and having rented the farm to his brother Ezra, he worked for his brothers, but chiefly for his brother Ezra. Attracted by the success of his brothers John and Levi in Canada, he set out from home to seek his fortune, and arrived at Eagle Tannery in the Township and County of Waterloo, in Upper Canada, on the 24th day of August, A.D., 1839. He entered the service of his brothers and worked for them until the spring of 1841. His father was anxious for him to return home and take the homestead, but he preferred to stay in Canada. On the 4th day of May, 1841, he received

\$2,650 from his father and bought out the interest of his brother Levi in the business carried on by John and Levi at Eagle Tannery on lot 62 in the German Company's Tract in the Township of Waterloo. The business consisted of a tannery, shoe shop, saddler shop, general store and farm. Levi returned to Pennsylvania and received the old homestead from his father. In 1841 Jane Robertson, a Scotch lassie of fourteen years of age came to Eagle Tannery to nurse John Wissler's children, and being clever and pretty with fair hair and rosy cheeks she at once became a great favorite with John Wissler and his wife. Jane Robertson, daughter of John Robertson and his wife, Janet Harvey, was born on the 15th day of October, 1826, at Largie, in the parish of Insch, in Aberdeenshire, Scotland, where her parents were farmers. About 1830 her father died of smallpox leaving her mother and three children, namely: Alexander, born 1824, died recently in Howick Township, Ontario; Jane; and John, born 1828, now a farmer residing at Kelvin, near Brantford, Ontario. After her father's death her mother sold the personal property and gave up the farm, retaining only a croft. In the spring of 1837 her mother married James Sims and they all sailed from Aberdeen on the ship Hercules for Quebec, where they arrived after a voyage of eight weeks. They proceeded by boat at once up the St. Lawrence, through the canals and across Lake Ontario to Toronto, where they remained for a time while her mother went up the country to see her sister in the Township of Nichol. On her mother's return they sailed to Hamilton, and thence in waggons and on foot they travelled through the bush to lot 12 in the 16th concession of the Township of Nichol in the County of Wellington, Upper Canada, where her aunt, Mrs. Arthur Walker, resided, and there spent their first winter in Canada. In the spring of 1838 they moved to Galt, where they resided that summer, and in the fall they moved to Wellesley Township in Waterloo County, near Hawkesville, where Mr. Sims took up a farm, the east half of lot 2, concession 13. Jane lived partly at home, partly in Nichol with Mrs. Walker and partly at Fergus with Rev. Mr. Gardiner, minister of St. Andrew's Church, who had been appointed her guardian by the court in

Scotland, until 1841, when she went to Eagle Tannery to nurse John Wissler's children. On the 6th day of August, 1843, she was married to Sem Wissler<sup>4</sup> by the Rev. F. W. Benderman, a Lutheran minister. After their marriage they continued to reside with his brother John at Eagle Tannery until June 1845, and during this time their eldest son, John Robertson Wissler,<sup>5</sup> was born on the 9th day of September, 1844. As tan bark was becoming scarce in the neighborhood of Eagle Tannery the firm began to look for a suitable place in which to start a new tannery, and finally on the 28th day of October, 1844, Sem Wissler<sup>4</sup> purchased from Jasper Tough Gilkison lot 16 and the south-westerly part of lot 17 in the 11th concession of the Township of Nichol, containing 159 acres, on the Irvine River, about 26 miles up the river from Eagle Tannery, and about three-quarters of a mile from the junction of the Irvine with the Grand River. Immediately afterwards he exchanged the northeast half of said lot 16 with John Keith for the southwest half of lot 15 in the same concession, there being good water privileges on that portion of lot 15. He hired James Longman and Robert Barkwell, whose descendants still reside in the adjoining Township of Peel, to clear part of the land, then a dense and unbroken forest, and to erect a log shanty with a bark roof for himself and his family to live in. In 1845 his sister Mary and her husband Levi Erb, with their children, arrived at Eagle Tannery from Pennsylvania, and Levi Erb was at once taken into the firm. Sem Wissler<sup>4</sup> with his wife and child moved to the Township of Nichol on the 9th day of June, A.D. 1845, and took up his residence in the shanty prepared for them and called his place Salem. It was bush nearly all the way up. When they got nearly there his wife and maid servant ran ahead of the waggons to see their future home, and when they saw it they sat down on a log and cried. There was only a small clearing in the swamp with three little log shanties in the centre of it. During the first season he built the dam, sawmill, flume and part of the tannery. They lived the first sixteen months in the shanty which was made of logs with a hemlock bark roof. In the main house there were three rooms on the ground floor and a loft above where the men slept. One addition

was the shoe shop and another the cow stable. The shanty was situated on the same site as he afterwards built his stone residence. Their cellar was a cave in the rocks forming the banks of the Irvine. This was a period of great activity, clearing the forest and building. He employed a large number of men, of whom about twenty-four boarded and lodged in the shanty, his wife and one maid servant doing all the baking, cooking and housework. In 1846 the tannery, which was a building about 40 feet by 120 feet, with basement of stone and upper story and attic of frame, was completed. Part was finished for a dwelling house, part as a store, part a shoe shop and the rest the tannery and currying shop proper. During the summer of this year he received a visit at Salem from his brother Ezra and his wife. In the autumn of 1846 they left the log shanty and took up their residence in the portion of the tannery building which had been fitted up as a dwelling house and here they resided until the spring of 1857. On the 31st day of December, 1846, he took the oath of allegiance to Her Majesty, Queen Victoria, and became a British subject. In September, 1847, he took his wife and child for a visit to his old home in Lancaster County, Pa., so that his wife and relatives might become acquainted. At that time there were few railroads. They drove from Salem to Hamilton, thence by boat to Lewiston, thence to Lockport, thence via Erie Canal and Hudson River to New York, thence by boat to Philadelphia, thence by rail to Lancaster City and thence drove to the old homestead. She still often speaks of the great pleasure she had on this trip. Their son Ezra was born on the 15th day of May, 1848; their daughter Mary Anna on the 27th day of April, 1851, and their daughter Elizabeth on the 25th day of October, 1853, during the period of their residence in the tannery. There was a great trade done at Salem. There being no railways, all the trade of the upper country passed through Salem. The tannery and the sawmill were carried on at their utmost capacity. He did a large business in a general store and employed about fifteen or twenty shoemakers constantly. Everything was booming. Such, however, was his power of dividing the labor and managing the business that the whole was run like one

great, smooth, oiled machine, while he coolly and quietly and with little apparent effort managed it all. In 1848 and 1849, although not a resident, he was elected a member of the District Council of the adjoining Township of Peel. In 1853 the firm decided to build a grist mill at Salem and that it should belong to Levi Erb. He had the foundation built when Mr. Erb came to Salem and took further charge of it. In August, 1853, he conveyed to Levi Erb the south westerly thirty-seven acres of lot 16 in the 11th concession of Nichol, on part of which the mill was built. In 1853 he built his bank barn, now owned by his son Levi Erb Wissler.<sup>3</sup> The business having so increased in 1854 he built the stone store now owned by his son Ezra Wissler.<sup>3</sup> He, Levi Erb and John Keith laid out part of their lands in village lots and in 1856 had a plan prepared and registered of the village of Salem. About 1848 he added to his farm by purchasing lot 15 in the 1st concession of the Township of Pilkington, west of the Grand River, containing one hundred acres more or less, and had it cleared and brought under cultivation. In the beginning of 1856, when John Wissler, Sem Wissler and Levi Erb had finished their annual stock taking at Eagle Tannery and found they had done so well, John Wissler told the others to go home and build a comfortable residence for each of them. In the summer of 1856 they each accordingly built a large and comfortable stone residence. Sem Wissler built his house on the northwest side of George Street. On account of some of his children being ill he did not move into the new house until the spring of 1857. In 1857, the period mentioned in their last partnership agreement having expired, the partnership existing between John Wissler, Sem Wissler and Levi Erb at Eagle Tannery under the name of "John Wissler & Co.," and at Salem under the name of "Wissler & Erb," was dissolved and thenceforth each pursued his own course. John Wissler sold Eagle Tannery and moved to Columbia Furnace, Virginia. Levi Erb retained his mill at Salem and Sem Wissler retained his sawmill, tannery, store and farm at Salem. During the partnership there existed an agreement for purchasing store goods at Eagle Tannery and Salem on very favorable terms and in order to retain

the advantages of this agreement for the Salem store a nominal partnership was continued for a time between Sem and John Wissler under the name of "S. & J. Wissler." In 1856 Sem Wissler built a mill for the manufacture of flour, oatmeal and pot barley a little further down the Irvine River from Erb's mill. This mill is now owned by his son John Robertson Wissler.<sup>5</sup> Subsequent to the building of his stone residence the rest of his children were born, namely: Levi Erb Wissler<sup>5</sup> on the 26th day of March, 1858; Henry Wissler,<sup>5</sup> on the 1st day of August, 1860, and Sem Wissler<sup>5</sup> on the 13th day of December, 1865. After the dissolution of the partnership he continued to prosper greatly and money seemed to roll in. He was elected a Councillor of the Township of Nichol in 1852, and from that time until his death was almost continuously in the Council as Councillor, Deputy-Reeve or Reeve. He was a Justice of the Peace for a number of years prior to his death. On the 18th day of May, 1865, at about five o'clock in the morning he was just getting up when he fell back on the bed and died immediately. He had been in apparently good health prior to his death. He was buried in a vault erected in the Elora Cemetery, a parcel of land part of lot 17, concession 11, Nichol, sold by him to the corporation of the village of Elora in 1864 for a public cemetery. He left surviving his wife and seven children. His death was a great calamity to Salem from which it has never recovered. He died intestate, leaving all his children minors, so that his estate could not be wound up or sold, except at great expense, until the youngest child should attain his majority. He was moderately tall, about five feet eleven inches high, weighed about 220 pounds, and had black hair. He was quiet, good natured, easy going, generous and had a hearty ringing laugh. Since his death his widow has continued to occupy the same house. The business was carried on by his eldest son, John R., for a few years until his second son, Ezra, became of age, after which it was carried on by them both under the name of "J. & E. Wissler" until the 1st day of January, 1887, when the estate was wound up and divided amongst the different members of the family.

John Robertson Wissler,<sup>5</sup> son of Sem Wissler<sup>4</sup> and his wife, Jane Robertson, was born at Eagle Tannery on the

9th day of September, 1844. He attended the public schools, the Elora grammar school and then worked in his father's office. After his father's death he managed the business alone until his brother Ezra attained his majority, after which they carried on the business together until the division of the estate in 1887. In 1866, on the removal of Levi Erb to Virginia, he purchased Mr. Erb's residence at Salem, which he still owns and occupies. In January, 1867, he was elected a Councillor of the Township of Nichol and continued to hold that office until 1879 when he became Deputy Reeve. He was Deputy Reeve until 1889 and then Reeve until 1893. In 1892 he was Warden of the County of Wellington. He has been a Justice of the Peace for a great many years. At the end of 1892 he retired from the Council and was then appointed Clerk of the Township of Nichol which position he still holds. On the 26th day of September, 1867, he was married to Harriet Biggar, of Elora, a daughter of George Biggar, a native of the south of Scotland, and his wife, Fanny Quest, a native of Yorkshire, England, who was born at Galt, Ontario, on the 4th day of August, 1847, and died at Salem on the 19th day of January, 1901. They had the following children: Franklin Robert, born July 14th, 1868; Fanny Mary, born February 25th, 1870, and George Sem, born December 27th, 1874, died unmarried April 11th, 1907. He owns the mill built by his father in 1857 and is Postmaster at Salem. He is also a director of The Nichol Mutual Fire Insurance Company, The Wellington Fire Insurance Company and The Millers' Insurance Company, and is an auditor of the County of Wellington.

Franklin Robert Wissler,<sup>6</sup> son of John R. Wissler<sup>5</sup> and his wife, Harriet Biggar, was born at Salem on the 14th day of July, 1868 and was married in 1892 to Mary Isabella Irvine, daughter of William Irvine, by whom he has the following children: William Robert,<sup>7</sup> born February 12th, 1893; Franklin Gordon,<sup>7</sup> born October 3rd, 1897, and Mary Isabella,<sup>7</sup> born May 6th, 1903. He works in the mill at Salem.

Fanny Mary Wissler,<sup>6</sup> daughter of John R. Wissler<sup>5</sup> and his wife, Harriet Biggar, was born at Salem on the 25th day of February, 1870. She was married on the 18th



day of September, 1895, to Rev. Hedley Vickers Thompson, a clergyman of the Church of England in Canada, now stationed at Shanty Bay, Simcoe County, Ontario. They have the following children: Hedley Ken,<sup>7</sup> born August 9th, 1896; John Waldo,<sup>7</sup> born March 2nd, 1898; Robert Ellerton,<sup>7</sup> born November 21st, 1899, and George Noel,<sup>7</sup> born December 27th, 1901.

Ezra Wissler,<sup>5</sup> son of Sem Wissler and his wife, Jane Robertson, was born at Salem, Ontario, on the 15th day of May, 1848. He attended the public schools, Elora grammar school and a commercial college at Poughkeepsie, New York, where he was at the time of his father's death. He ran the business with his brother John and always kept the books and the store. On the 7th day of July, 1870, he was married to Fanny Winfield, daughter of John and Mary Winfield, of the Township of Pilkington, natives of Yorkshire England, by whom he had one child, Fanny Maud Mary,<sup>6</sup> born December 31st, 1872. His wife Fanny died on the 28th day of February, 1874. In April, 1881, he was married to Jemima Agnes Bigger, a daughter of Andrew Bigger and his wife, Jessie Thomson, of Trafalgar Township, Halton County, Ontario, by whom he has one child, Jane,<sup>6</sup> born March 14th, 1883. He keeps the store and Post Office at Salem. He has been a member of the Nichol Council for the last six years, and is now Reeve of Nichol. His elder daughter, Fanny Maude Mary Wissler,<sup>6</sup> was married on the 1st day of January, 1902, to Stariey Richard Jecks, a native of England, who is an express messenger on the Canadian Pacific Railway and now resides at Ottawa, Canada. They have one child, Jean Helen,<sup>7</sup> born January 16th, 1903.

Mary Anna Wissler,<sup>5</sup> daughter of Sem Wissler and his wife, Jane Robertson, was born at Salem on the 27th day of April, 1851, and was married in 1872 to Charles Henry Bigger, son of Andrew Bigger and his wife, Jessie Thomson, of Trafalgar, Halton County, Ontario, and now resides at 113 Rose Avenue, Toronto, Ontario, to which place they removed from Salem in 1885. They have the following children: Leila Wissler Bigger,<sup>6</sup> born January 25th, 1873, married December 12th, 1901, to Walter Clifford Armstrong, manager of a branch of the Dominion Bank at

Winnipeg, Manitoba ; Arthur Pettit Bigger,<sup>6</sup> born January 25th, 1876, and Florence Ethel May Bigger,<sup>6</sup> born November 10th, 1878, married December 18th, 1902, to William Morgan Floyd, mechanical dentist, Toronto, Ontario. C. H. Bigger is a dealer in pianos.

Elizabeth Wissler,<sup>5</sup> daughter of Sem Wissler<sup>4</sup> and his wife, Jane Robertson, was born at Salem on the 25th day of October, 1853, and was married on the 4th day of March, A.D. 1886, to George Washington Field, son of Jeremiah Field, a farmer in Pickering, Ontario. Mr. Field graduated as B.A. at the Toronto University with honors in modern languages. He wrote for a short time for the Toronto Globe and was head master of the Elora High School. He studied law, becoming a barrister and solicitor. He practised law in Elora for about a year in 1885 and then took up his residence in Guelph, Ontario, where he practised his profession with marked success until 1898 when failing health obliged him to give up work. In August, 1898 they moved to Salem, where, after a lingering illness, Mr. Field died on the 10th day of January, 1900, in the 46th year of his age. Mrs. Field resides in Salem with her two children, Sem Wissler Field,<sup>6</sup> born December 21st, 1886, and Wilfrid Field,<sup>6</sup> born September 19th, 1893.

Levi Erb Wissler,<sup>5</sup> son of Sem Wissler<sup>4</sup> and his wife, Jane Robertson, was born at Salem on the 26th day of March, 1858. After attending the public school, Elora high school and a business college at Hamilton, Ontario, he worked in the mill until the division of the estate in 1887, when he received the home farm which he has worked ever since. He is married to Henrietta Shaw, of Elora, daughter of John M. Shaw, publisher of the Elora Express, by whom he has had the following children: Robert Stone Wissler,<sup>6</sup> born April 4th, 1879, married December 17th, 1902, to Martha M. Moore, of Elora, resides at Warren, Ontario; Violetta May,<sup>6</sup> born September 3rd, 1880; William Shaw,<sup>6</sup> born August 24th, 1882; Mary Ann,<sup>6</sup> born April 11th, 1884, died September 13th, 1900; Levi Erb,<sup>6</sup> born September 1st, 1885, died March 17th, 1886; Sem John,<sup>6</sup> born January 11th, 1887; Jane Erb,<sup>6</sup> born June 13th, 1890; Fanny Flavelle,<sup>6</sup> born September 9th, 1891, died November 3rd, 1891.



Henry Wissler.<sup>5</sup>

Mrs. Henry Wissler.<sup>5</sup>

### HENRY WISSLER.<sup>5</sup>

Henry Wissler,<sup>5</sup> son of Sem Wissler<sup>4</sup> and his wife, Jane Robertson, was born at Salem on the 1st day of August, 1860. He received his education at the Salem public school, Elora high school, 1873-78, and University College, Toronto, where he graduated B.A. in 1882. He studied law and was called to the Bar and received his Certificate of Fitness in February, 1886. On the 1st day of March, 1886, he began the practice of his profession at Elora, Ontario, and has continued there ever since. On the 4th day of June, 1890, he was married to Barbara Macdonald Foote, daughter of David Foote, of Elora, a native of the parish of Kettins, Forfarshire, Scotland, and first Reeve of Elora, and his wife, Barbara Smart, a Canadian of Scotch descent. They have no children.

Sem Wissler,<sup>5</sup> son of Sem Wissler<sup>4</sup> and his wife, Jane Robertson, was born at Salem on the 13th day of December, 1865. After leaving school he was for a number of years a clerk in the Merchants' Bank of Canada, and the Bank of British North America, and subsequently in a lithographing business in Toronto. At present he resides with his mother at Salem and is unmarried. He is a Fire and Life Insurance Agent.

Sem Wissler<sup>1</sup> 1819-65  
 m Jane Robertson  
 b 15 Oct., 1826.

