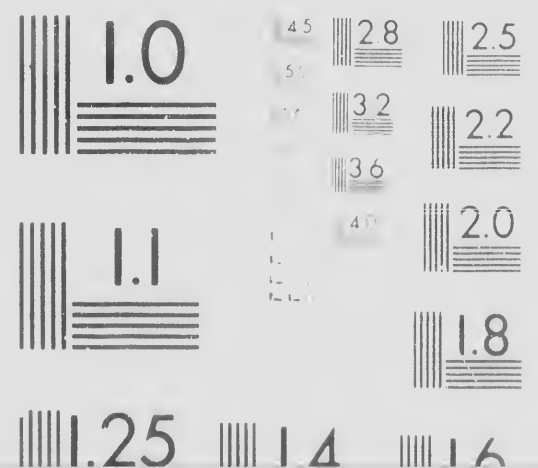
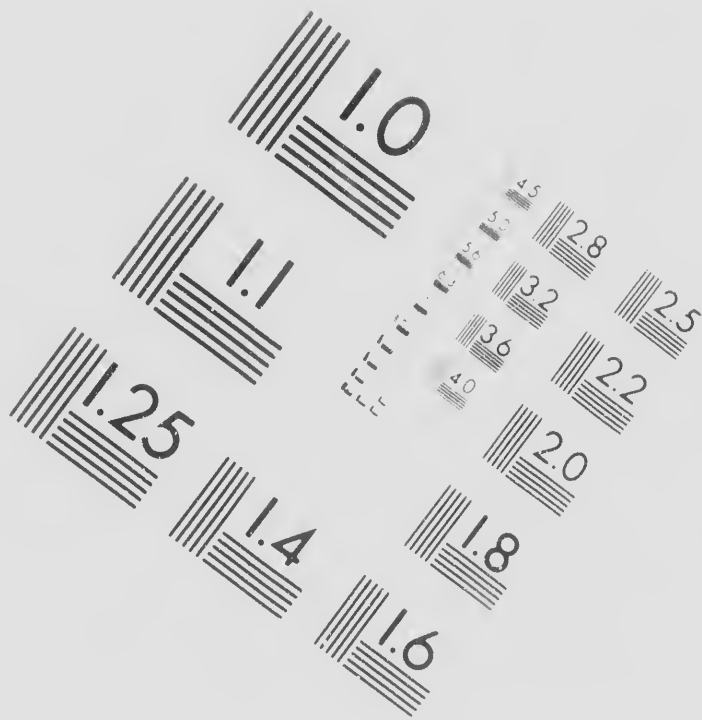


## IMAGE EVALUATION TEST TARGET (MT-3)





**CIHM/  
Microf  
Series.**

**ICMH  
che**

**CIHM/ICMH  
Collection de  
microfiches.**



-  
c  
c  
v  
r  
t

[

[

[

[

[

[

[

[

Technical and Bibliographic Notes/Notes techniques et bibliographiques

The Institute has attempted to obtain the best original copy available for filming. Features of this copy which may be bibliographically unique, which may alter any of the images in the reproduction, or which may significantly change the usual method of filming, are checked below.

- Coloured covers/  
Couverture de couleur
- Covers damaged/  
Couverture endommagée
- Covers restored and/or laminated/  
Couverture restaurée et/ou pelliculée
- Cover title missing/  
Le titre de couverture manque
- Coloured maps/  
Cartes géographiques en couleur
- Coloured ink (i.e. other than blue or black)/  
Encre de couleur (i.e. autre que bleue ou noire)
- Coloured plates and/or illustrations/  
Planches et/ou illustrations en couleur
- Bound with other material/  
Relié avec d'autres documents

L'Institut a microfilmé le meilleur qu'il lui a été possible de se procurer de cet exemplaire qui sont peut-être de ce point de vue bibliographique, qui peuvent être une image reproduite, ou qui peuvent nécessiter une modification dans la méthode normale de filmage, sont indiqués ci-dessous.

- Coloured pages/  
Pages de couleur
- Pages damaged/  
Pages endommagées
- Pages restored and/or laminated/  
Pages restaurées et/ou pelliculées
- Pages discoloured, stained or foxed/  
Pages décolorées, tachetées ou jaunies
- Pages detached/  
Pages détachées
- Showthrough/  
Transparence
- Quality of print varies/  
Qualité inégale de l'impression
- Includes supplementary material/  
Comprend du matériel supplémentaire

xemplaire  
er. Les détails  
e uniques du  
euvent modifier  
ent exiger une  
nale de filmage

**The copy filmed here has been reproduced thanks to the generosity of:**

**Library of Congress  
Photoduplication Service**

**The images appearing here are the best quality possible considering the condition and legibility of the original copy and in keeping with the filming contract specifications.**

ted/  
lées

**Original copies in printed paper covers are filmed beginning with the front cover and ending on the last page with a printed or illustrated impression, or the back cover when appropriate. All other original copies are filmed beginning on the first page with a printed or illustrated impression, and ending on the last page with a printed or illustrated impression.**

foxed/  
u piquées

ial/  
mentaire

**Maps, plates, charts, etc., may be filmed at different reduction ratios. Those too large to be entirely included in one exposure are filmed beginning in the upper left hand corner, left to right and top to bottom, as many frames as**

L'exemplaire filmé fut reproduit grâce à la générosité de:

Library of Congress  
Photoduplication Service

Les images suivantes ont été reproduites avec le plus grand soin, compte tenu de la condition et de la netteté de l'exemplaire filmé, et en conformité avec les conditions du contrat de filmage.

Les exemplaires originaux dont la couverture en papier est imprimée sont filmés en commençant par le premier plat et en terminant soit par la dernière page qui comporte une empreinte d'impression ou d'illustration, soit par le second plat, selon le cas. Tous les autres exemplaires originaux sont filmés en commençant par la première page qui comporte une empreinte d'impression ou d'illustration et en terminant par la dernière page qui comporte une telle empreinte.

Les cartes, planches, tableaux, etc., peuvent être filmés à des taux de réduction différents.

Lorsque le document est trop grand pour être reproduit en un seul cliché, il est filmé à partir de l'angle supérieur gauche, de gauche à droite,





Sir,

I informed you in my letter of the  
of shipments," particularly of flour and  
sufficient cause for detention of the vessel  
been added to the list. But he has given  
forcibly to that object. As it was the gr  
power of detention, he considers it his du  
the Embargo Laws. He recommends,  
for a place where they cannot be wanted  
no necessity at present, for the transport  
the Chesapeake and its waters, to another  
port whatever to ports in the Chesapeake  
port such articles. And in order to prev

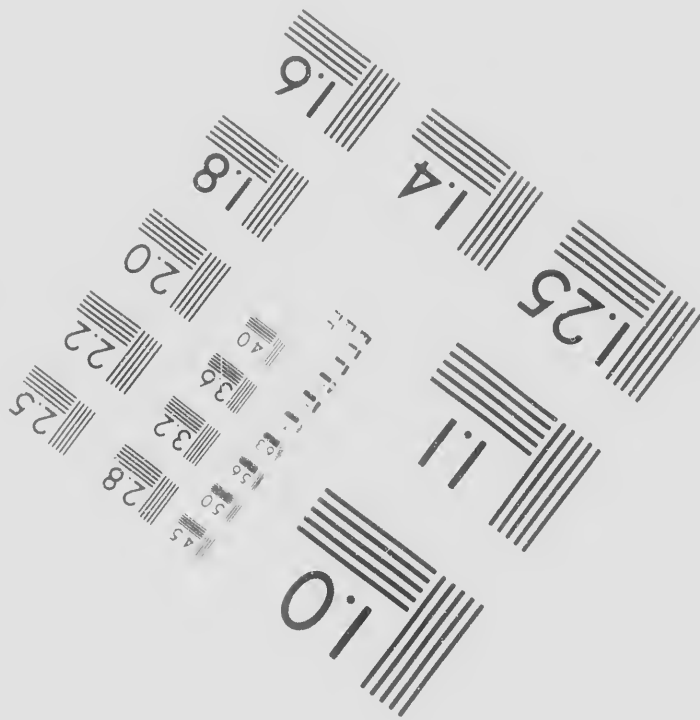
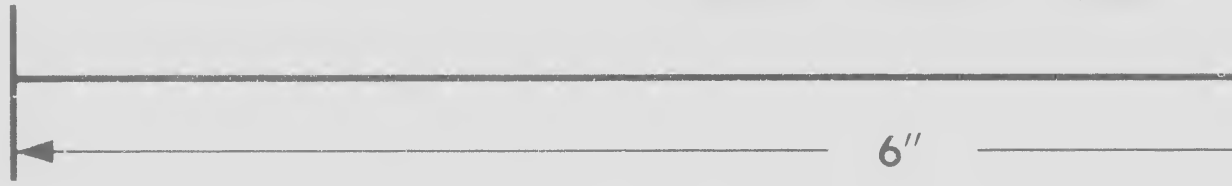
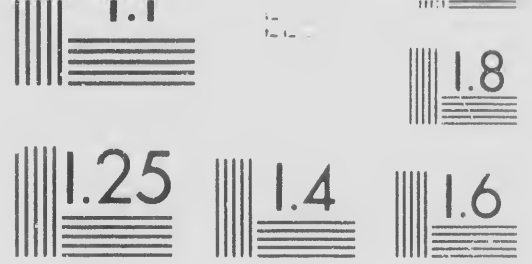
RCULAR.)

TREASURY DEPARTMENT,

MAY 6TH, 1808.

28th ultimo, that the President considered "unusu-  
other provisions, of lumber, and of naval stores, as  
; pot and pearl ashes and flax seed ought to have  
it in charge to me to call your attention still more  
at leading object of the legislature in giving the  
y in the execution of it to give complete effect to  
herefore, that every shipment of the above articles  
for consumption should be detained. He perceives  
ation of flour and similar articles, from one port of  
port on the waters of the same bay; or from any  
Delaware or Hudson, or to other places which ex-  
nt the inconveniencies which the want of a sufficient



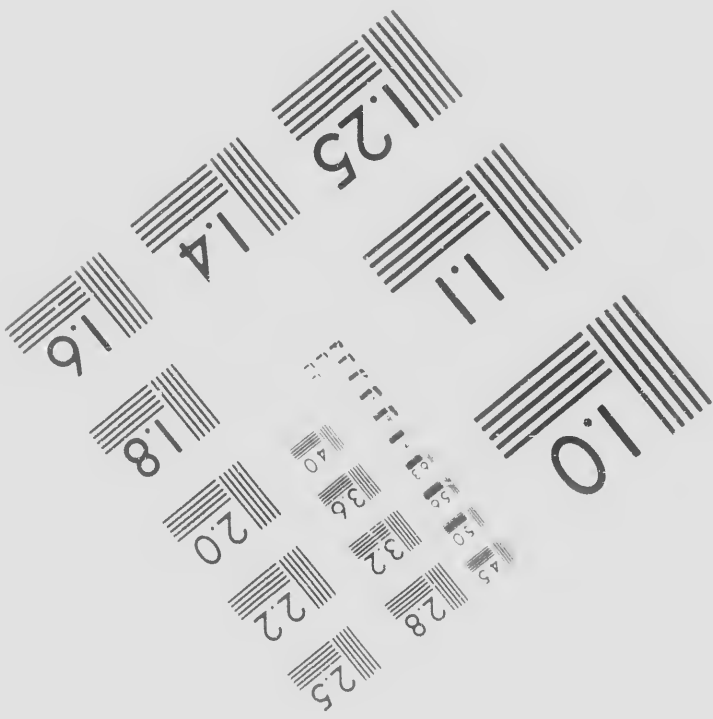


Photographic  
Sciences  
Corporation

23 WEST MA  
WEBSTER, N  
(716) 87



Canadian Institute for Historical



N STREET  
Y. 14580  
2-4503





Microreproductions / Institut canadien de microreproductions historiques

**1986**



TI  
C







al/  
netaire

maps, plates, charts, etc., may be filmed at different reduction ratios. Those too large to be entirely included in one exposure are filmed beginning in the upper left hand corner, left to right and top to bottom, as many frames as required. The following diagrams illustrate the method:

ured by errata  
efilmed to  
/  
llement  
ata, une pelure,  
de facon à  
sible.



30X

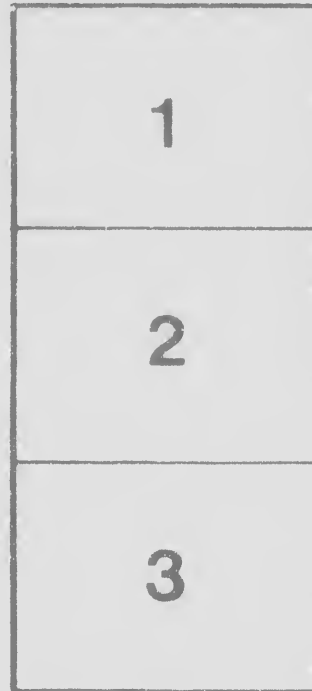


32X



Les cartes, planches, tableaux, etc., peuvent être filmés à des taux de réduction différents.

Lorsque le document est trop grand pour être reproduit en un seul cliché, il est filmé à partir de l'angle supérieur gauche, de gauche à droite, et de haut en bas, en prenant le nombre d'images nécessaire. Les diagrammes suivants illustrent la méthode.





the Chesapeake and its waters, to another port whatever to ports in the Chesapeake port such articles. And in order to prevent supply might occasion in some states, he shire, Massachusetts, South-Carolina, G enclosed for your information.

In order that he may also be enabled instructions are carried into effect, you w a statement of the vessels laden with artic from the district during the week, shewi of destination. Vessels not masted or de bonds, and those employed in carrying f not be inserted in the statement.

The Collector of

or consumption should be detained. He perceives  
tion of flour and similar articles, from one port of  
port on the waters of the same bay; or from any  
Delaware or Hudson, or to other places which ex-  
ent the inconveniencies which the want of a sufficient  
has written a letter to the Governors of New-Hamp-  
orgia and Orleans, copy of which is, by his order,

d to judge of the manner in which the law and his  
ll be pleased to transmit weekly to this department,  
es of domestic produce, which shall have departed  
g the species and quantity of articles, and the port  
ked, packets and ferry-boats, vessels which give no  
ce wood, manure, stones and similar articles, need

I am, very respectfully,

Sir,

Your obedient servant,

