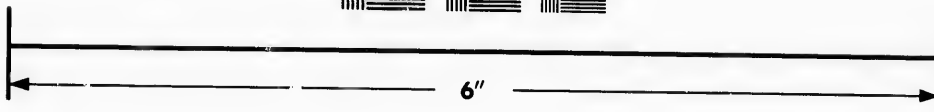
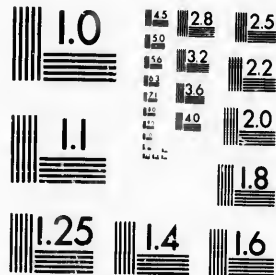
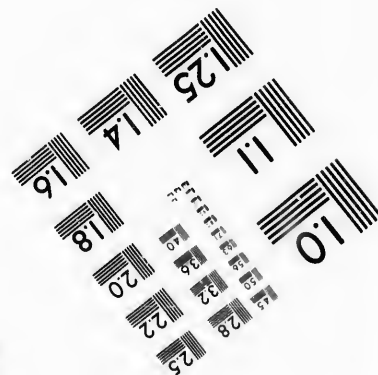


**IMAGE EVALUATION  
TEST TARGET (MT-3)**



Canadian Ins



**Photographic  
Sciences  
Corporation**

23 WEST MAIN STREET  
WEBSTER, N.Y. 14580  
(716) 872-4503



225  
H

**CIHM/ICMH  
Microfiche  
Series.**

**CIHM/ICMH  
Collection de  
microfiches.**



Canadian Institute for Historical Microreproductions / Institut canadien de microreproductions historiques

**© 1986**

Technical and Bibliographic Notes/Notes techniques et bibliographiques

The Institute has attempted to obtain the best original copy available for filming. Features of this copy which may be bibliographically unique, which may alter any of the images in the reproduction, or which may significantly change the usual method of filming, are checked below.

L'Institut a microfilmé le meilleur exemplaire qu'il lui a été possible de se procurer. Les détails de cet exemplaire qui sont peut-être uniques du point de vue bibliographique, qui peuvent modifier une image reproduite, ou qui peuvent exiger une modification dans la méthode normale de filmage sont indiqués ci-dessous.

- Coloured covers/  
Couverture de couleur
- Covers damaged/  
Couverture endommagée
- Covers restored and/or laminated/  
Couverture restaurée et/ou pelliculée
- Cover title missing/  
Le titre de couverture manque
- Coloured maps/  
Cartes géographiques en couleur
- Coloured ink (i.e. other than blue or black)/  
Encre de couleur (i.e. autre que bleue ou noire)
- Coloured plates and/or illustrations/  
Planches et/ou illustrations en couleur
- Bound with other material/  
Relié avec d'autres documents
- Tight binding may cause shadows or distortion along interior margin/  
La reliure serrée peut causer de l'ombre ou de la distorsion le long de la marge intérieure
- Blank leaves added during restoration may appear within the text. Whenever possible, these have been omitted from filming/  
Il se peut que certaines pages blanches ajoutées lors d'une restauration apparaissent dans le texte, mais, lorsque cela était possible, ces pages n'ont pas été filmées.

- Coloured pages/  
Pages de couleur
- Pages damaged/  
Pages endommagées
- Pages restored and/or laminated/  
Pages restaurées et/ou pelliculées
- Pages discoloured, stained or foxed/  
Pages décolorées, tachetées ou piquées
- Pages detached/  
Pages détachées
- Showthrough/  
Transparence
- Quality of print varies/  
Qualité inégale de l'impression
- Includes supplementary material/  
Comprend du matériel supplémentaire
- Only edition available/  
Seule édition disponible
- Pages wholly or partially obscured by errata slips, tissues, etc., have been refilmed to ensure the best possible image/  
Les pages totalement ou partiellement obscurcies par un feuillet d'errata, une pelure, etc., ont été filmées à nouveau de façon à obtenir la meilleure image possible.

- Additional comments:/ This copy is a photoreproduction. [Printed ephemera] 1 sheet (verso blank)  
Commentaires supplémentaires:

This item is filmed at the reduction ratio checked below/  
Ce document est filmé au taux de réduction indiqué ci-dessous.

10X	12X	14X	16X	18X	20X	22X	24X	26X	28X	30X	32X
								✓			

The copy filmed here has been reproduced thanks to the generosity of:

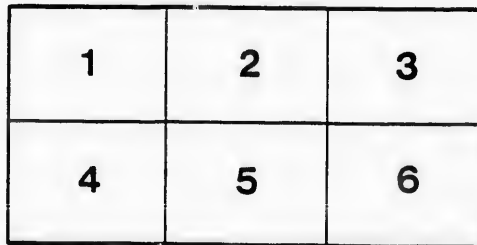
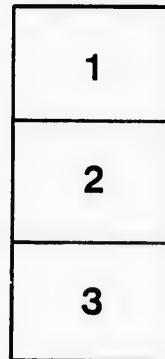
D. B. Weldon Library  
University of Western Ontario  
(Regional History Room)

The images appearing here are the best quality possible considering the condition and legibility of the original copy and in keeping with the filming contract specifications.

Original copies in printed paper covers are filmed beginning with the front cover and ending on the last page with a printed or illustrated impression, or the back cover when appropriate. All other original copies are filmed beginning on the first page with a printed or illustrated impression, and ending on the last page with a printed or illustrated impression.

The last recorded frame on each microfiche shall contain the symbol  $\rightarrow$  (meaning "CONTINUED"), or the symbol  $\nabla$  (meaning "END"), whichever applies.

Maps, plates, charts, etc., may be filmed at different reduction ratios. Those too large to be entirely included in one exposure are filmed beginning in the upper left hand corner, left to right and top to bottom, as many frames as required. The following diagrams illustrate the method:



L'exemplaire filmé fut reproduit grâce à la générosité de:

D. B. Weldon Library  
University of Western Ontario  
(Regional History Room)

Les images suivantes ont été reproduites avec le plus grand soin, compte tenu de la condition et de la netteté de l'exemplaire filmé, et en conformité avec les conditions du contrat de filmage.

Les exemplaires originaux dont la couverture en papier est imprimée sont filmés en commençant par le premier plat et en terminant soit par la dernière page qui comporte une empreinte d'impression ou d'illustration, soit par le second plat, selon le cas. Tous les autres exemplaires originaux sont filmés en commençant par la première page qui comporte une empreinte d'impression ou d'illustration et en terminant par la dernière page qui comporte une telle empreinte.

Un des symboles suivants apparaîtra sur la dernière image de chaque microfiche, selon le cas: le symbole  $\rightarrow$  signifie "A SUIVRE", le symbole  $\nabla$  signifie "FIN".

Les cartes, planches, tableaux, etc., peuvent être filmés à des taux de réduction différents. Lorsque le document est trop grand pour être reproduit en un seul cliché, il est filmé à partir de l'angle supérieur gauche, de gauche à droite, et de haut en bas, en prenant le nombre d'images nécessaire. Les diagrammes suivants illustrent la méthode.

# Chance

Pursuant to the decree of the Court  
cause of HARRIS vs. GREER, and with the approval of the Court

Sold by P

BY Mr. A.

At his Auction Room, on D

is unpatented. amount due the Crown has been paid  
duties. The Lot is five miles West of Bothwell and uncleared.

The above Properties will be  
subject to a reserved bidding on each lot.

The parties to the Suit, with t  
be at liberty to bid.

A deposit of \$10 for every \$  
be paid by the purchaser to the Vendor or his Solicitor, at the time of Sale  
within one month from the time of Sale.

CONDITION

WEDNESDAY 11th



# Chancery Sale

of the Court of Chancery made in a certain  
R, and with the approbation of the Master of this Court at London, will be

by Public Auction,

## A. S. EMERY,

Room, on Dundas Street, in the City of London,

own has been paid, and the purchaser will be entitled to the patent on performing the settlement  
uncleared.

s will be sold in four Lots, as above, and

t, with the exception of the Vendor, are to

every \$100 of the purchase money shall

, at the time of Sale, and the residue of the purchase money shall be paid into Court, with interest,

### CONDITIONS OF SALE

### THE 11th DAY OF APRIL

# CONDITIONS SATURDAY, the 9th

At Two o'clock in the Afternoon, the under

## 1. One hundred Acres, more or less.

of the "Greer Farm" [which farm is composed of that part of the West Half of the West Half of Lot No 8, in the 4th concession of the Township of Delaware, in

## 2. The Easterly one-third of the

Acres, more or less.

The "Greer Farm" is a well improved Farm, and is situate on the Gravel Road from the village of Delaware, and eight and a-half miles from London.

## 3. Eighty Acres, more or less, being

in the 1st concession of the Township of Westminster, in said County, and the East of the Bill of Complaint, which will be produced at the time of Sale.

This farm is situate on the Commissioners' Road, and adjoins the Village of Byfleet. There are a Stone Building and two Frame Barns and a Shed on this property.

## 4. One hundred Acres, more or less

No. 11 in the 4th concession of the Township of Zone, in the County of Kent.

**And further particulars may be obtained**

said Master; at the Offices of Messrs. Harris & Magee; Messrs. Scatcherd & Meredith "Greer Farm."

Dated the 17th day of March, A.D. 1870.

**W. R. MEREDITH,**

Vendor's Solicitor.

(Advertiser Print)

# NOTICE OF SALE ON THE 9th DAY OF APRIL

on, the undermentioned Lands, that is to say:

**more or less, being the Westerly two-thirds**  
the West Half of Lot No. 7, which lies south of the Gravel Road, and the North Half of  
the East Half of Lot No. 7, which lies north of the Gravel Road, in the County of Middlesex.]

**part of the said Farm, containing Fifty**

acres, situated on the Gravel Road leading from Delaware to London, and is three and a-half miles distant  
from London.

**more or less, being the East part of Lot No. 45,**  
situated in the County of Middlesex, and the East part of the broken front of said lot, more particularly described in

the Village of Byron, distant about six miles from London. The land is chiefly cleared.  
The title to this property is good.

**more or less, being the West half of Lot**  
No. 45, situated in the County of Middlesex, and the West part of the broken front of said lot, more particularly described in

the Village of Byron, distant about six miles from London. The land is chiefly cleared.  
The title to this property is good.  
**may be obtained at the Chambers of the**  
Messrs. Scatcherd & Meredith, and S. H. Graydon, Esq., London, and from Mrs. Greer, on the

**J. SHANLY,**

(Advertiser Print, London)

Master at London.



