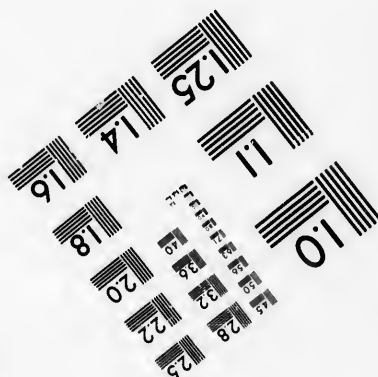
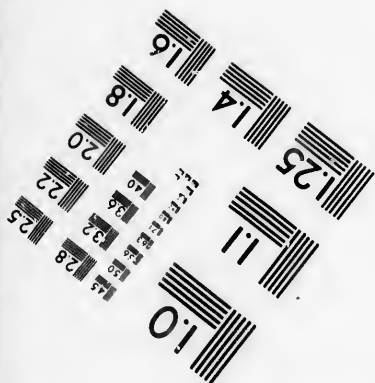
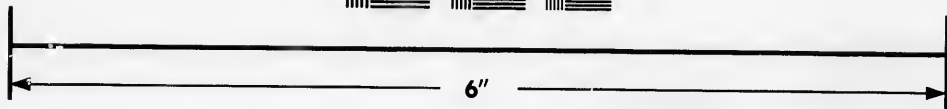
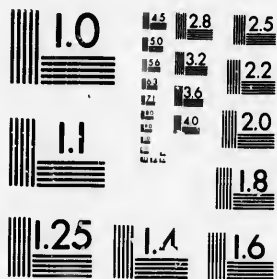


**IMAGE EVALUATION
TEST TARGET (MT-3)**



**Photographic
Sciences
Corporation**

23 WEST MAIN STREET
WEBSTER, N.Y. 14580
(716) 872-4503

**CIHM/ICMH
Microfiche
Series.**

**CIHM/ICMH
Collection de
microfiches.**



Canadian Institute for Historical Microreproductions / Institut canadien de microreproductions historiques

© 1986

Technical and Bibliographic Notes/Notes techniques et bibliographiques

The Institute has attempted to obtain the best original copy available for filming. Features of this copy which may be bibliographically unique, which may alter any of the images in the reproduction, or which may significantly change the usual method of filming, are checked below.

L'Institut a microfilmé le meilleur exemplaire qu'il lui a été possible de se procurer. Les détails de cet exemplaire qui sont peut-être uniques du point de vue bibliographique, qui peuvent modifier une image reproduite, ou qui peuvent exiger une modification dans la méthode normale de filmage sont indiqués ci-dessous.

- Coloured covers/
Couverture de couleur
- Covers damaged/
Couverture endommagée
- Covers restored and/or laminated/
Couverture restaurée et/ou pelliculée
- Cover title missing/
Le titre de couverture manque
- Coloured maps/
Cartes géographiques en couleur
- Coloured ink (i.e. other than blue or black)/
Encre de couleur (i.e. autre que bleue ou noire)
- Coloured plates and/or illustrations/
Planches et/ou illustrations en couleur
- Bound with other material/
Relié avec d'autres documents
- Tight binding may cause shadows or distortion
along interior margin/
La reliure serrée peut causer de l'ombre ou de la
distorsion le long de la marge intérieure
- Blank leaves added during restoration may
appear within the text. Whenever possible, these
have been omitted from filming/
Il se peut que certaines pages blanches ajoutées
lors d'une restauration apparaissent dans le texte,
mais, lorsque cela était possible, ces pages n'ont
pas été filmées.

- Coloured pages/
Pages de couleur
- Pages damaged/
Pages endommagées
- Pages restored and/or laminated/
Pages restaurées et/ou pelliculées
- Pages discoloured, stained or foxed/
Pages décolorées, tachetées ou piquées
- Pages detached/
Pages détachées
- Showthrough/
Transparence
- Quality of print varies/
Qualité inégale de l'impression
- Includes supplementary material/
Comprend du matériel supplémentaire
- Only edition available/
Seule édition disponible
- Pages wholly or partially obscured by errata
slips, tissues, etc., have been refilmed to
ensure the best possible image/
Les pages totalement ou partiellement
obscurcies par un feuillet d'errata, une pelure,
etc., ont été filmées à nouveau de façon à
obtenir la meilleure image possible.

Additional comments:
Commentaires supplémentaires:

[Printed ephemera] 1 sheet (verso blank)

This item is filmed at the reduction ratio checked below/
Ce document est filmé au taux de réduction indiqué ci-dessous.

10X	12X	14X	16X	18X	20X	22X	24X	26X	28X	30X	32X
					✓						

The copy filmed here has been reproduced thanks to the generosity of:

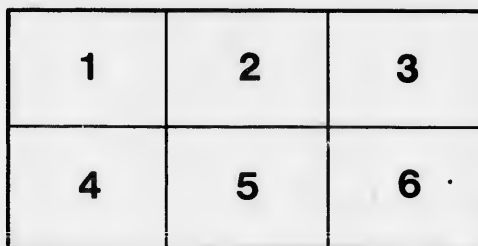
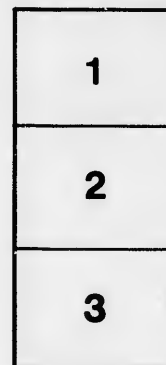
Library of the Public
Archives of Canada

The images appearing here are the best quality possible considering the condition and legibility of the original copy and in keeping with the filming contract specifications.

Original copies in printed paper covers are filmed beginning with the front cover and ending on the last page with a printed or illustrated impression, or the back cover when appropriate. All other original copies are filmed beginning on the first page with a printed or illustrated impression, and ending on the last page with a printed or illustrated impression.

The last recorded frame on each microfiche shall contain the symbol \rightarrow (meaning "CONTINUED"), or the symbol ∇ (meaning "END"), whichever applies.

Maps, plates, charts, etc., may be filmed at different reduction ratios. Those too large to be entirely included in one exposure are filmed beginning in the upper left hand corner, left to right and top to bottom, as many frames as required. The following diagrams illustrate the method:



L'exemplaire filmé fut reproduit grâce à la générosité de:

La bibliothèque des Archives
publiques du Canada

Les images suivantes ont été reproduites avec le plus grand soin, compte tenu de la condition et de la netteté de l'exemplaire filmé, et en conformité avec les conditions du contrat de filmage.

Les exemplaires originaux dont la couverture en papier est imprimée sont filmés en commençant par le premier plat et en terminant soit par la dernière page qui comporte une empreinte d'impression ou d'illustration, soit par le second plat, selon le cas. Tous les autres exemplaires originaux sont filmés en commençant par la première page qui comporte une empreinte d'impression ou d'illustration et en terminant par la dernière page qui comporte une telle empreinte.

Un des symboles suivants apparaîtra sur la dernière image de chaque microfiche, selon le cas: le symbole \rightarrow signifie "A SUIVRE", le symbole ∇ signifie "FIN".

Les cartes, planches, tableaux, etc., peuvent être filmés à des taux de réduction différents. Lorsque le document est trop grand pour être reproduit en un seul cliché, il est filmé à partir de l'angle supérieur gauche, de gauche à droite, et de haut en bas, en prenant le nombre d'images nécessaire. Les diagrammes suivants illustrent la méthode.

STATEMENT

OF THE

BANK OF MONTREAL

SOLD FROM THE 1ST MAY, 1821, TO

EXHIBITING MONTHLY THE AMOUNT

DATE	RATE OF EXCHANGE.	MONTHLY AMOUNT SOLD.		DATE.	RATE OF EXCHANGE.	MONTHLY AMOUNT SOLD.	
1821.				1823.			
May.	6 per cent.	£11650		March.	12½ pr.cent.	£2353	
	6½ do.	19450			13 do.	164	
	7 do.	2170				£4321	
	8 do.	2240		April.	6 do.	2652	
		£35510			10 do.	317	
June.	6 do.	5000				2969	
	7½ do.	4000		May.	4½ do.	2000	
	8 do.	5613			5 do.	9878	
		14613			5½ do.	4000	
July.	8 do.	1123			6 do.	2516	
	8¼ do.	6000				18394	
		7123		June.	5 do.	9959	
August.	7½ do.	26000				9959	
	7 do.	1972		July.	do. do.	546	
		27972			6 do.	4665	
September.	7½ do.	14000			6¾ do.	5000	
	8 do.	7238			7¼ do.	24000	
		21238		August.	7 do.	425	
October.	7½ do.	6000				425	
	8 dc.	10994		September.	do. do.	6140	
	8½ do.	16674			7½ do.	1000	
	9 do.	3561				7140	
		37229		October.	7 do.	19000	
November.	8 do.	3474			8 do.	1989	
	8½ do.	6345			7½ do.	7758	
	9 do.	13823				28747	
	9½ do.	8000		November.	7 do.	13628	
		31642			8 do.	1058	
December.	8 do.	500				14686	
	9 do.	1072		December.	do. do.	902	
	10 do.	13397				902	
	11 do.	2385		1824.			
		17354		January.	do. do.	1638	
1822.					9 do.	5318	
January.	11 do.	15971				6956	
		15971		February.	8½ do.	20569	
February.	do. do.	6289			9 do.	3278	
	12½ do.	20000				23847	
		26289		March.	8 do.		
March.	11 do.	9904					

31642

November.

7 do.

13628

STATEMENT

OF THE

ALBION BANK'S BILLS OF EXCHANGE,

FROM THE 1st MAY, 1821, TO THE 1st MARCH, 1830.

SHOWING THE AMOUNT SOLD AND AT WHAT RATE.

MONTHLY AMOUNT SOLD.	DATE.	RATE OF EXCHANGE.	MONTHLY AMOUNT SOLD.	DATE.	RATE OF EXCHANGE.	MONTHLY AMOUNT SOLD.
	1825.					
	April.	9½ per cent.	£3090	1827.		
		10 do.	205	October.	9½ per cent.	£33
£4321			£3295	November.	do. do.	36
	May.	5 do.	6000		12½ do.	2563
		6 do.	6000	December.	12½ do.	7798
2969		8½ do.	492			7798
		9½ do.	1376			
	June.	5 do.	21000	1828.		
		5½ do.	3000	January.	13 do.	963
18394		6 do.	2000	February.	do. do.	654
		7 do.	3401			654
9959		8½ do.	341	March.	do. do.	230
	July.	5 do.	5300			230
		7 do.	4512	April.	do. do.	13
			9812	May.	10½ do.	3473
34211	August.	do. do.	5665			3473
425		7½ do.	4000	June.	do. do.	2852
	September.	8 do.	3774			2852
		8¼ do.	25000	July.	9 do.	7500
7140			28774		9¼ do.	7500
	October.	9 do.	9240	September.	10¾ do.	5250
		10 do.	1737			5250
25747		7¾ do.	17000	October.	do. do.	19500
		9½ do.	6040		11 do.	3000
	November.	8½ do.	5000			22500
14686		10 do.	2697	November.	12 do.	158
	December.	8 do.	7000			158
902		10 do.	19576	December.	do. do.	171
			26576			171
	1826.			1829.		
6956	January.	do. do.	2103	January.	10½ do.	1070
			2103		11 do.	22
	February.	7 do.	7500		11½ do.	795
23847		10 do.	935	February.	11 do.	381
			8435			381

December.	8	do.	500	31642	November.	7	do.	13628		November
	9	do.	1072			8	do.	1058	14686	
	10	do.	13397		December.	do.	do.	902		December
	11	do.	2385						902	
				17354	1824.					
1822.										
January.	11	do.	15971	15971	January.	do.	do.	1638		1826
						9	do.	5318	6956	January.
February.	do.	do.	6289		February.	8½	do.	20569		February.
	12½	do.	20000	26289		9	do.	3278	23847	
March.	11	do.	9904		March.	8½	do.	6217		March.
	12	do.	1538	11442		9	do.	16473	22690	April.
April.	do.	do.	11291	11291	April.	do.	do.	7203	7203	
May.	11½	do.	1529		May.	8	do.	225		May.
	12	do.	14659	16184		9	do.	8815		
June.	10	do.	5000			10	do.	569	9609	September
	11	do.	24308	29507	June.	8¾	do.	2000		October.
	12	do.	199			9	do.	13000	46793	November
July.	11	do.	7139	14209		10	do.	31793	17848	December
	12	do.	7070		July.	do.	do.	17848	8533	1827
August.	do.	do.	4085	20956	August.	do.	do.	8533	5565	January.
	12½	do.	16871		September.	do.	do.	5565	5565	February.
September.	do.	do.	5126	8344	October.	do.	do.	561		March.
	13	do.	2988			12	do.	4433	6085	
	15	do.	230	15019	November.	12	do.	1072	17506	April.
October.	13	do.	6719			12½	do.	16434	5663	May.
	13½	do.	3800	25339	December.	do.	do.	5663		
	14	do.	4500		1825.					
November.	13	do.	15430	14482	January.	9½	do.	25000	32822	June.
	13½	do.	9909			12½	do.	7822		
December.	12½	do.	6750		February.	8	do.	3850	26961	July.
	13	do.	5586			9	do.	18000		
	13½	do.	2146		March.	10	do.	5111		August.
1823.						9	do.	5333		September
January.	13	do.	465	465		8½	do.	2058	7391	
February.	do.	do.	339	339						
March.	10	do.	1600							
	12	do.	204							

Bank of Montreal, March 13, 1830.

					34017
14686	November.	8½	do.	5000	
		10	do.	2697	
					7697
902	December.	8	do.	7000	
		10	do.	19576	
					26576
	1826.				
6956	January.	do.	do.	2103	2103
	February.	7	do.	7500	
23847		10	do.	935	
					8435
	March.	8	do.	20	20
22690	April.	do.	do.	150	
7203		9	do.	1050	
					1200
	May.	8	do.	3000	
		10	do.	117	
					3117
9609	September.	do.	do.	12000	12000
	October.	do.	do.	652	652
46793	November.	10½	do.	18	18
17848	December.	do.	do.	20	20
8533	1827.				
5565	January.	do.	do.	250	250
	February.	9½	do.	517	517
6085	March.	10	do.	100	
		10½	do.	5000	5100
17506	April.	10	do.	5000	5000
5663	May.	8	do.	108	
		10	do.	200	
		10½	do.	6000	6308
32822	June.	8½	do.	2947	
		9	do.	6084	
		9½	do.	1574	10605
	July.	do.	do.	2715	2715
26961	August.				
7391	September.	9½	do.	36	36

					11	do.	3000	
	November.	12	do.	158				22500
	December.	do.	do.	171				158
								171
	1829.							
	1829.							
	January.	10½	do.	1070				
		11	do.	22				
		11½	do.	795				1887
	February.	11	do.	381				381
	March.	10½	do.	10050				
		11	do.	718				10768
	April.	10	do.	1138				
		10½	do.	1014				2152
	May.	10	do.	1250				
		10½	do.	1560				
		11	do.	57				2867
	June.	8	do.	5000				
		9½	do.	10000				
		9¾	do.	4500				
		10	do.	3040				
		10½	do.	39				22579
	July.	9¼	do.	2850				
		9½	do.	10550				
		9¾	do.	4500				
		10	do.	1272				
		9	do.	3500				22672
	August.	10	do.	745				745
	September.	do.	do.	1084				1084
	October.	9	do.	2500				
		9½	do.	15513				
		10	do.	1041				19054
	November.	9½	do.	12020				12020
	December.	10	do.	1782				1782
	1830.							
	January.	do.	do.	262				262
	February.	do.	do.	834				834

(Signed)

BENJ. HOLMES, *Cashier.*

