

**CIHM
Microfiche
Series
(Monographs)**

**ICMH
Collection de
microfiches
(monographies)**



Canadian Institute for Historical Microreproductions / institut canadien de microreproductions historiques

© 1995

Technical and Bibliographic Notes / Notes technique et bibliographiques

The Institute has attempted to obtain the best original copy available for filming. Features of this copy which may be bibliographically unique, which may alter any of the images in the reproduction, or which may significantly change the usual method of filming are checked below.

- ☒ Coloured covers / Couverture de couleur
- ☐ Covers damaged / Couverture endommagée
- ☐ Covers restored and/or laminated / Couverture restaurée et/ou pelliculée
- ☐ Cover title missing / Le titre de couverture manque
- ☐ Coloured maps / Cartes géographiques en couleur
- ☒ Coloured ink (i.e. other than blue or black) / Encre de couleur (i.e. autre que bleue ou noire)
- ☒ Coloured plates and/or illustrations / Planches et/ou illustrations en couleur
- ☐ Bound with other material / Relié avec d'autres documents
- ☐ Only edition available / Seule édition disponible
- ☐ Tight binding may cause shadows or distortion along interior margin / La reliure serrée peut causer de l'ombre ou de la distorsion le long de la marge intérieure.
- ☐ Blank leaves added during restorations may appear within the text. Whenever possible, these have been omitted from filming / Il se peut que certaines pages blanches ajoutées lors d'une restauration apparaissent dans le texte, mais, lorsque cela était possible, ces pages n'ont pas été filmées.
- ☐ Additional comments / Commentaires supplémentaires:

L'Institut a microfilmé le meilleur exemplaire qu'il lui a été possible de se procurer. Les détails de cet exemplaire qui sont peut-être uniques du point de vue bibliographique, qui peuvent modifier une image reproduite, ou qui peuvent exiger une modifications dans la méthode normale de filmage sont indiqués ci-dessous.

- ☐ Coloured pages / Pages de couleur
- ☐ Pages damaged / Pages endommagées
- ☐ Pages restored and/or laminated / Pages restaurées et/ou pelliculées
- ☒ Pages discoloured, stained or foxed / Pages décolorées, tachetées ou piquées
- ☐ Pages detached / Pages détachées
- ☒ Showthrough / Transparence
- ☐ Quality of print varies / Qualité inégale de l'impression
- ☐ Includes supplementary material / Comprend du matériel supplémentaire
- ☐ Pages wholly or partially obscured by errata slips, tissues, etc., have been refilmed to ensure the best possible image / Les pages totalement ou partiellement obscurcies par un feuillet d'errata, une pelure, etc., ont été filmées à nouveau de façon à obtenir la meilleure image possible.
- ☐ Opposing pages with varying colouration or discolourations are filmed twice to ensure the best possible image / Les pages s'opposant ayant des colorations variables ou des décolorations sont filmées deux fois afin d'obtenir la meilleure image possible.

This item is filmed at the reduction ratio checked below/
Ce document est filmé au taux de réduction indiqué ci-dessous.

A horizontal number line with 21 boxes. Above the boxes are labels: 10x, 14x, 18x, 22x, 26x, 30x. Below the boxes are labels: 12x, 16x, 20x, 24x, 28x, 32x. A checkmark is in the box labeled 14x.

The copy filmed here has been reproduced thanks to the generosity of:

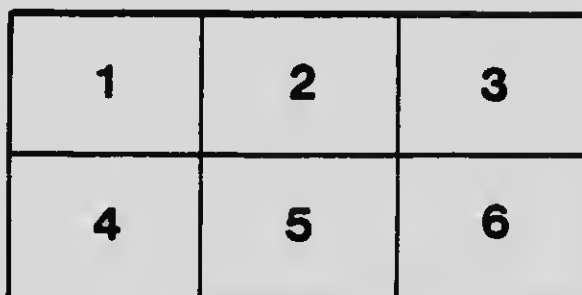
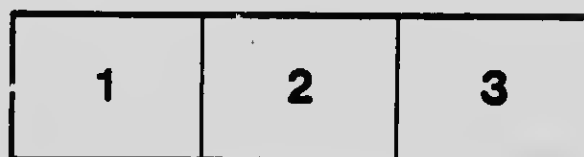
National Library of Canada

The images appearing here are the best quality possible considering the condition and legibility of the original copy and in keeping with the filming contract specifications.

Original copies in printed paper covers are filmed beginning with the front cover and ending on the last page with a printed or illustrated impression, or the back cover when appropriate. All other original copies are filmed beginning on the first page with a printed or illustrated impression, and ending on the last page with a printed or illustrated impression.

The last recorded frame on each microfiche shall contain the symbol \rightarrow (meaning "CONTINUED"), or the symbol ∇ (meaning "END"), whichever applies.

Maps, plates, charts, etc., may be filmed at different reduction ratios. Those too large to be entirely included in one exposure are filmed beginning in the upper left hand corner, left to right and top to bottom, as many frames as required. The following diagrams illustrate the method:



L'exemplaire filmé fut reproduit grâce à la générosité de:

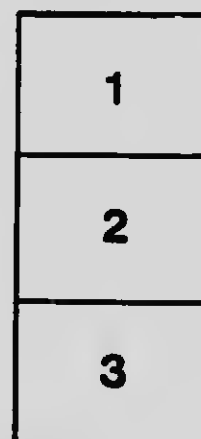
Bibliothèque nationale du Canada

Les images suivantes ont été reproduites avec la plus grande soin, compte tenu de la condition et de la netteté de l'exemplaire filmé, et en conformité avec les conditions du contrat de filmage.

Les exemplaires originaux dont la couverture en papier est imprimée sont filmés en commençant par le premier plat et en terminant soit par la dernière page qui comporte une empreinte d'impression ou d'illustration, soit par le second plat, selon le cas. Tous les autres exemplaires originaux sont filmés en commençant par la première page qui comporte une empreinte d'impression ou d'illustration et en terminant par la dernière page qui comporte une telle empreinte.

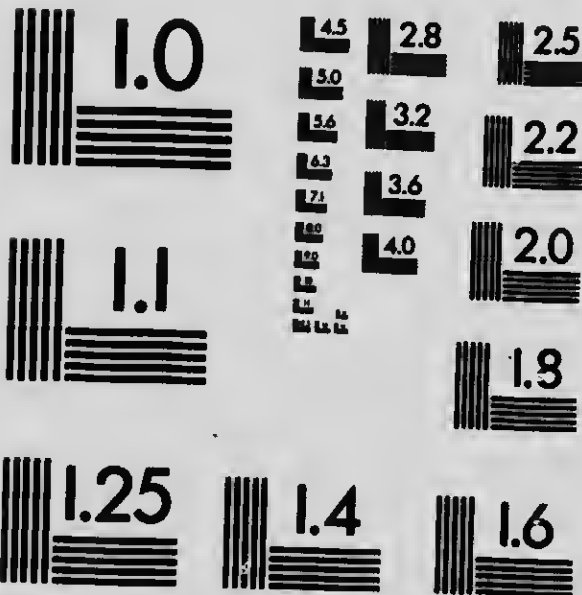
Un des symboles suivants apparaîtra sur la dernière image de chaque microfiche, selon le cas: le symbole \rightarrow signifie "A SUIVRE", le symbole ∇ signifie "FIN".

Les cartes, planches, tableaux, etc., peuvent être filmés à des taux de réduction différents. Lorsque le document est trop grand pour être reproduit en un seul cliché, il est filmé à partir de l'angle supérieur gauche, de gauche à droite, et de haut en bas, en prenant le nombre d'images nécessaire. Les diagrammes suivants illustrent la méthode.



MICROCOPY RESOLUTION TEST CHART

(ANSI and ISO TEST CHART No. 2)



APPLIED IMAGE

1653 East Main Street
Rochester, New York 14609 USA
(716) 482 - 0300 - Phone
(716) 288 - 5989 - Fax

779 886

Opportunities in British Columbia

(With Local References)

1911



**Extracts from
Heaton's Annual**

Heaton's Agency, Toronto

**Copyright by Ernest Heaton
Toronto, 1910**

2-3765

C. 2.

**EXTRACTS FROM HEATON'S
ANNUAL**

which contains similar information covering every Province in the Dominion, with Customs Tariff, etc., etc. Price, cloth bound, 5/-. Copies can be obtained from Heaton's Agency, Toronto, and all leading booksellers in Canada, Great Britain and the United States. London Agents, Simpkin, Marshall, Hamilton, Kent & Co., Ltd.

OPPORTUNITIES IN CANADA

Abbreviated Edition of Heaton's Annual with illustrations, can be purchased at The Times Book Club, London, and the bookstalls of W. H. Smith & Sons. Price 1/-.

To secure Special Attention mention Heaton's Annual when
writing to Local References

Opportunities in British Columbia

Agriculture

APPLES. In 1909, British Columbia won 7 gold medals, 7 silver gilt medals, 7 silver medals, and 1 award of merit, at London, Edinburgh, Birmingham, Leeds, Bristol, Bath, Harwich, Manchester, Aberdeen and Liverpool, and other exhibitions in Great Britain, and thirteen first prizes out of fourteen entries at Spokane, Washington, in competition with the principal apple-growing districts in the United States. Markets—local, Alberta, Saskatchewan, Manitoba, Great Britain, New Zealand, Australia. Write to Department of Agriculture, Victoria, for Bulletin No. 20, giving varieties of trees suitable for different localities.

APPLE ORCHARD, COST OF. In the case of unirrigated land the cost would be approximately: 20 acres at \$200 per acre, \$4,000; fencing, \$250; preparing land (ploughing and harrowing), \$150; trees (yearlings), 80 per acre at 15c. each, \$120; setting out trees, 1,600 at 8c. each, \$128. Total, \$4,768. Cost of maintenance for 5 years: Cultivating, pruning, spraying, etc., \$30 per acre, per year, \$3,000; making the total cost of the orchard at the end of the 5th year, when it should be beginning to give commercial returns, \$7,768.

BEEKEEPING. Conditions are favourable, especially in the fruit-growing districts. Honey sells for 25 cents per pound. 70,000 pounds imported in 1909.

CATTLE. The Fraser River Valley and the interior plateaus are peculiarly adapted to cattle raising. Practically all the beef raised is grown under the range conditions. The local demand from June to December is supplied within the province. For the rest of the year

● **OPPORTUNITIES IN BRITISH COLUMBIA**



Entrance to Vancouver Harbour. See page 31.

the supply is obtained from Alberta. Very little winter fattening is done in the province. Ranch cattle, chiefly Shorthorn and Hereford grades, sell from 3½ to 5 cents per lb., alive at shipping points.

DAIRYING. Good water and luxuriant grasses are in plenty. A favourable climate on coast. Local demand is constantly increasing. Twenty co-operative and private creameries are established. The Provincial Government aids establishment of co-operative creameries. Output of creameries in 1909, 2,062,500 pounds; dairies, 562,500 pounds, all sold locally. Average price, 34½ cents. Total value, \$823,750. This represents about 33 per cent. of the butter consumed in B.C. and Yukon. Increased demand for milk has materially affected the manufacture of butter.

FLAX. Cultivated successfully. There is an oil mill at Mission, B.C. Flax is only used as fodder; no attempt has been made to manufacture linen.

FLOWERING BULBS. The soil and climate of Vancouver Island, near Victoria, is peculiarly adapted to the production of flowering bulbs. Nearly all the bulbs used in North America are imported from Europe. Estimated profits over \$2,000 per acre.

FODDER CROPS. Besides the nutritious bunch grass, which affords good grazing to cattle, horses and sheep on the benches and hillsides, all the cultivated grasses grow in profusion wherever sown. Red clover, alfalfa, sainfoin, alsike, timothy and brome grass, yield large returns—three crops in the season in some districts and under favourable circumstances. Hay averages about 1½ tons to the acre and the average price \$18 to \$27.

FRUIT GROWING. It is estimated one million acres south of 52nd degree will produce all fruits of the temperate zone. Apples of excellent quality will grow as far north as Hazelton, on the Skeena River, between 55 and 56 degrees north. Nectarines, apricots, fruits, almonds and nuts have been tried with success. In 1891, total acreage in fruit was 6,437; in 1901, 7,430; in 1905, 22,000; in 1909, 100,000. In 1902, the first shipments were 1,956 tons; in 1907, 4,743 tons. Large profits are made in the business. For districts see under "Agricultural Lands."

GRAPES. Tokay, Concord, Campbell's Early and Moore's Diamond are the varieties chiefly cultivated. Grape-

6 *OPPORTUNITIES IN BRITISH COLUMBIA*



The Basque Fruit Farms—Irrigated Orchard and Vegetable Tracts near Ashcroft, B.C. See paragraph on page 19 under heading, "Ashcroft District—Basque Fruit Farms."

growing has not been established in a commercial sense, though conditions are favourable in all southern districts.

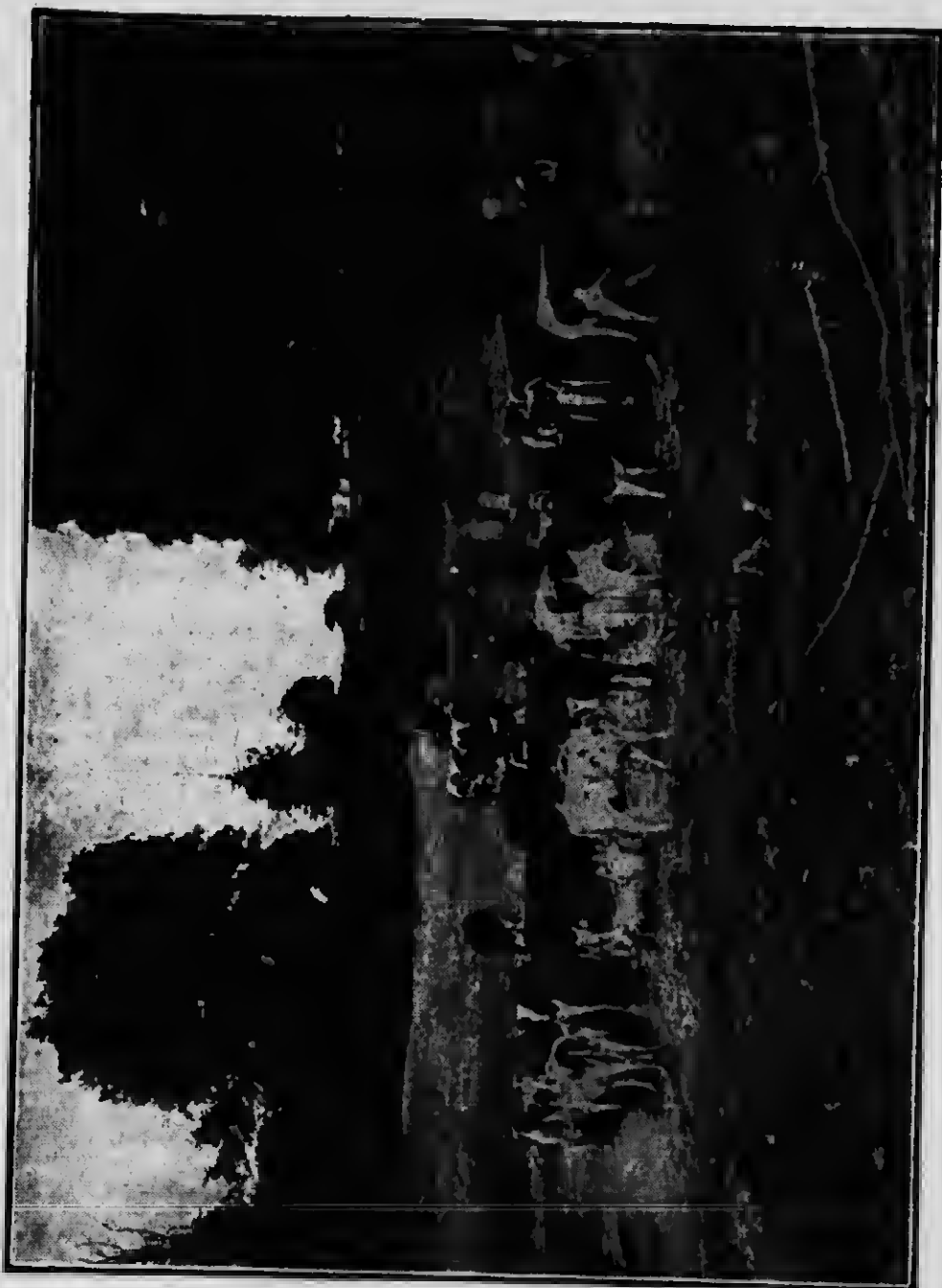
HOP CULTURE. The Okanagan, Agassiz and Chilliwack Districts are well suited to hop-growing and produce large quantities, unexcelled in quality. British Columbia hops demand good prices in the British market and most of the crop is sent there, though recently Eastern Canada and Australia are buying increasing quantities. The yield of hops averages 1,500 pounds to the acre, and the average price is 25 cents per pound. An exhibit of British Columbia hops, sent to the New Zealand International Exhibition in 1906, was greatly admired and was the means of opening a new market for this product.

HORSES. There is a good general demand for heavy-draught horses; good horses bring \$500 to \$800 a pair. The demand for carriage horses, chiefly confined to coast cities, is increasing. The medium animals bring from \$200 up; better animals from \$350 to \$1,500 each.

POULTRY. Importations of eggs and poultry average \$2,447,500 annually. All parts of the province suitable to poultry raising. Eggs average 40 cents per dozen. Poultry, 22 to 30 cents per pound. Fifty-five carloads of poultry were imported in 1909.

ROOTS AND VEGETABLES. All kinds of roots and vegetables grow to perfection and sell at high prices. Potatoes, turnips, beets, mangolds, and all the other roots grow in profusion wherever their cultivation has been attempted. Sixty-eight tons of roots to a measured acre is recorded at Chilliwack, and near Kelowna, on Okanagan Lake, 20 acres produced 403 tons of potatoes, which sold at \$14 per ton. The Dominion census places the average yield of potatoes at 162.78 bushels to the acre. The average price of potatoes is \$1.60 per sack, while carrots, turnips, parsnips and beets sell at an average of about 60 cents per bushel.

SHEEP. On Vancouver Island, and in the Gulf of Georgia, flocks of from 25 to 400 have always proved profitable. The foundation of the flocks are Down grades, on which are used Shropshires, Southdown, Oxford, Leicester, and Cotswold; on the lower mainland, particularly at Chilliwack and Ladner, sheep are profitably reared. In the interior, sheep are kept on the farms in small lots. The timber wolf and panther have to be guarded against. The demand far exceeds the supply; 60,000 head of live sheep are annually imported from the State of Washing-



Country Scene on Vancouver Island.

ton, a number from Alberta, and many thousand frozen carcasses from Australia.

SWINE. Hogs are profitably grown in all farming districts. The demand for pork far exceeds the supply. Live hogs bring an average of 7 cents per lb. the year round. A large packing plant in Vancouver has to depend largely upon outside points for hogs. There are several small curing houses. In 1909 there was imported: Bacon and ham, 2,359,222 lbs.; salt pork, 97,517 lbs.; lard, 1,888,096 lbs. Value of above, \$546,210. These figures do not include imports from other provinces, and represent only about 26% of total importation.

TOBACCO. Tobacco has been notably successful in Okanagan. Cuban seed is imported and changed every three or four years, because as the leaf increases in size the flavour diminishes. A factory at Kelowna produces cigars equal to good Havanas, with filler made of local tobacco and a Sumatra wrapper. Ontario or Quebec tobacco has been used for binders. Actual results from 20 acres show the following returns: Proceeds of 24,000 lbs. at 10 cents, \$2,400. Total expenses, including rent, \$1,294; net profit, \$1,016.

Agricultural Lands

AREA CULTIVABLE. Professor Macoun, after personal investigation, says: The whole of British Columbia south of 52 degrees and east of the Coast Range is a grazing country up to 3,500 feet, where irrigation is possible. Roughly estimated, these fertile lands may be set down at one million acres. North of 52 there are 10 million acres of agricultural land.

C.P.R. LANDS. The Canadian Pacific Ry. Co. control large areas of farming, fruit and ranching lands in the Kootenay, and Boundary and Okanagan districts. Price, first-class land, \$5.00 per acre up. Second class, \$2.50 to \$5.00. Third class, \$1.00 to \$2.50. Payments made with 6% interest in equal annual instalments. In addition, \$2.00 per M. ft. B.M. for all timber land contains at time of purchase. Minimum area sold 160 acres. The Canadian Pacific Ry. Co. also hold for sale large tracts of timber lands. Price, \$1.00 per acre and all timber upon it \$2.00 per thousand. Terms $\frac{1}{2}$ cash, balance with 6% interest in four and nine equal annual instalments. Minimum area 640 acres. Purchaser must pay also Government



A blossoming orchard at Kaleden in the Okanagan Valley. These lands are for sale by Jas. Ritchie, W. Summerland, B.C. Read the paragraph on page 24, headed "Okanagan Valley, Kaleden — Jas. Ritchie."

royalties and taxes. Apply for information to J. S. Dennis, Assistant to Vice-President C.P.R., Calgary, Alberta.

CARIBOO AND CASSIAR. 196,000,000 acres, of which 10,000,000 acres will produce wheat. These great northern districts, practically unexplored and undeveloped, are suitable for cattle raising and farming. The country is lightly timbered. There are many fertile valleys which are attracting settlers. In South Cariboo are several flourishing ranches. Grain, vegetables and cattle find a market in the Mining Camps. Settlers are flocking into the districts traversed by the G.T.P. Ry., including Bulkeley and Nechaco Valleys, Ft. George, Fraser, Ootsa Francois and Babine Lake districts.

COMOX DISTRICT. 4,000,000 acres. Includes N. part of Vancouver Island and part of opposite mainland; as yet sparsely populated. There is good farming land on many of the islands and near Comox. North from Seymour Narrows large areas with drainage would make valuable cattle ranges.

COMPANY LANDS. In the Boundary district wild land is held at from \$1.00 to \$5.00 and up per acre. Improved land is held at from \$50.00 to \$150 per acre. Similkameen, \$50 to \$200, the latter irrigated. Okanagan Lake, irrigated and improved, \$150 to \$300; and non-irrigated, \$20 to \$100. Okanagan bush land, \$5 to \$20; partly cleared and improved, \$125 and up to \$1,000. In the lower mainland, i.e., the sea coast west of the Coast Range, unimproved land, \$5 to \$20. Dyked land, \$40 to \$150. In Vancouver and adjoining islands, wild land mostly heavily timbered, \$10 to \$50; improved land, \$50 to \$250.

DOMINION LANDS. All land within 20 miles on each side of C.P.R. main line belongs to the Dominion, and is administered by the Department of the Interior practically according to same regulations as the public lands in Manitoba, Saskatchewan and Alberta. The Dominion also own 3,500,000 acres in B.C. on the Peace River, subject to the same regulations. See "Dominion Lands Homestead Regulations" in Heaton's Annual.

FRUIT GROWING DISTRICTS. It is estimated one million acres south of 52nd degree will produce all fruits of the temperate zone. The recognized fruit districts include the southern part of Vancouver Island and the Gulf Islands, Lower Fraser River Valley. Thompson



Part of the largest Orchard in Canada—435 acres—on the Coldstream Estate, near Vernon. For further information read the paragraph headed "Okanagan Valley—Vernon District—Coldstream Estate Co., Limited," on pages 26 and 27.

River Valley, Shuswap Lake, Okanagan, Spallumcheen, Osoyoos, Similkameen, Kootenay Lake, Arrow Lakes, Lower Columbia River Valley and Grand Forks, which are all suited to the best grades of fruit, and which contain extensive areas of fruit lands. Other good fruit districts are: West Coast of Vancouver Island, West Coast of Mainland, (where patches of fruit lands are found at the heads of the numerous inlets), Lower Fraser Valley, Nicola, Grand Prairie and many other localities. It is now an established fact that apples of excellent quality will grow as far north as Hazelton, on the Skeena River, between 55 and 56 degrees north. The acreage of orchards is increasing rapidly; large profits are made in the business. See also under Okanagan Valley and under Agricultural and Fruit Lands Announcements.

FRUIT LANDS—AGENTS. The following is a partial list of companies and individuals holding fruit lands for sale, from whom more complete information can be obtained respecting the fruit industry in British Columbia: Cranbrook, B.C., Beale & Elwell, R. B. Benedict; Kamloops, B.C., Pragnell & Cosier; Kelowna, B.C., The Central Okanagan Lands, Ltd.; Lethbridge, Alta., Freeman, Macleod Co.; Merritt, B.C., The Southern B.C. Lands & Mines; Nakusp, B.C., Thomas Abriel; Nanaimo, B.C., A. E. Planta, Ltd.; Nelson, B.C., Brydges, Blakemore & Cameron, Ltd.; P. J. Gleazer & Co.; Kootenay Orchard Association, Ltd.; New Westminster, B.C., White, Shiles & Co.; Okanagan Centre, B.C., The Okanagan Valley Land Co., Ltd.; Penticton, B.C., The Southern Okanagan Land Co., Ltd.; Port Alberni, B.C., Carmichael & Moorhead, Ltd.; Salmon Arm, B.C., The Salmon Arm Realty Co., Ltd.; Summerland, B.C., Chas. H. Cordy; G. A. McWilliams; James Ritchie; Vancouver, B.C., Noel Humphreys; Macaulay & Nicholls; McLeod, Mark & Co.; Natural Resources Security Co., Ltd.; Ross & Shaw; The John McLeod Co.; The Kamloops-Vancouver Trust Co., Ltd.; Ward, Burmester & von Graevenitz; Vernon, B.C., R. Fitzmaurice; Orchard Johnston & Co.; The Coldstream Estate Co., Ltd.; Victoria, B.C., Alvo von Alvensleben, Ltd.; Carmichael & Moorhead, Ltd.; R. S. Day & Beaumont Boggs; Pemberton & Son; The B.C. Land and Investment Agency, Ltd.; Tracksell, Anderson & Co.

KOOTENAY DISTRICT. 15,000,000 acres. Forms S.E. portion of British Columbia west of summit of Rocky Mountains; drained by the Columbia and Kootenay

14 OPPORTUNITIES IN BRITISH COLUMBIA



A 10-acre Apple Orchard can be planted and brought to a paying basis in 4 years for about \$3,500. Read the paragraph under heading, "Nelson District—Brydges, Elakemore & Cameron," on page 22.

Rivers. In East Kootenay are tracts of land suitable for fruit, grain and vegetables. Irrigation is generally required. In West Kootenay are several areas of fertile land partly utilized in fruit culture. Mining and lumber camps afford home market.

LILLOOET DISTRICT. 10,000,000 acres. Largely a pastoral country, well adapted to dairying, cattle raising and fruit growing. Railway communication is lacking.

OKANAGAN VALLEY. Lies near the 50th parallel, at from 1,300 to 1,650 feet above sea-level, extending 150 miles from the C.P. Ry. to U.S. boundary. Width, 2 to 6 miles. Winter climate averages 12 degrees of frost. Soil consists, generally, of light clay loam with decomposed rock on higher levels, alternating on bottom lands in places with rich black loam. All kinds of sub-tropical fruit do well. Apples have been shipped to England, Australia and the Yukon. The prairie provinces furnish an inexhaustible market for all fruit grown. Lakes and small streams abound. Okanagan Lake, extending from near Vernon to Penticton, is 70 miles long, 1 to 3 miles wide. In the valley are Sicamous, Enderby, Armstrong, Vernon, Kelowna, Summerland, Peachland, Naramata and Penticton. See Descriptions of Towns, British Columbia.

PROVINCIAL LANDS. There are no free homesteads. Agricultural land (not exceeding 160 acres) may be pre-empted. No person can hold more than one claim at a time. Claims cannot be staked by agent. Settler must occupy within 60 days from recording claim, have land surveyed within 5 years from date of record, make improvements, \$2.50 per acre and occupy continuously for 2 years. More than two months' continuous absence is deemed cessation of occupation. No crown grant can be issued to aliens not naturalized. Price \$1.00 per acre in 4 equal instalments; first in two years from date of record. Crown lands may be purchased—1st class, \$5 per acre; 2nd class, \$2.50 per acre. Payable 50c. on application, balance on allotment. The Commissioners may raise prices. Leases of Crown lands surveyed in lots of 20 acres may be obtained subject to improvements. Crown grants are issued. Leases of 1,000 acres may be granted—for cutting hay 10 years, for other purposes, 21 years. Agent may stake leased lands.

WESTMINSTER DISTRICT. 4,900,000 acres. Includes all fertile valley of Lower Fraser. A rich agricultural



Early Crawford Peaches grown in an Alberni Orchard. Unplanted tracts of 10 and 40 acres cost \$20 (\$4) per acre. Write for free pamphlets and all information to Carmichael & Moorhead, Limited, Port Alberni, or Victoria, B. C., and read carefully the paragraph on page 30, under heading "Vancouver Island, Alberni and E. Coast District."

district. Climate mild, with much rain. Heavy crops of hay, grain and roots are the rule. Fruit grows to perfection in profusion.

VANCOUVER ISLAND. 10,496,000 acres. There are many settlements along line of Esquimalt and Nanaimo Ry. which have land grant of 1,500,000 acres most of which is covered with heavy timber. The Company is selling cleared land to settlers at moderate prices. All grains, grasses, roots and vegetables grow to perfection, also strawberries, small fruits, pears, plums, prunes and cherries, and in southern districts peaches, apricots, nectarines and grapes.

YALE DISTRICT. 15,500,000 acres. "The Garden of British Columbia" Includes the rich valleys of the Okanagan, Nicola, Similkameen, Nicola River, N. and S. Thompson, and the Boundary. The main line of the C.P.R. passes east and west through centre. Branch lines and lake steamers give access to southern portions. New branch lines in construction will open up large areas. Cattle ranches are being rapidly divided into small holdings for fruit culture and small farms. Hops are grown in Okanagan, Agassiz and Chilliwack districts.

Agricultural and Fruit Lands

ANNOUNCEMENTS

The information under this heading is not officially revised. Announcements concerning lands will be accepted only when certified correct by an officer of a Board of Trade or by a responsible firm of recognized standing, personally known to the Editors. The Editors reserve the right to edit matter received.

ARROW LAKES—NAKUSP DISTRICT. Comprises 75,000 acres of fine fruit lands along the shores of the beautiful Arrow Lakes. Apples, pears, plums, cherries and small fruits mature to perfection. Clear mountain streams and springs provide ample water supply; no irrigation necessary. Climatic conditions and atmospheric moisture give a peculiarly delicious flavour to the fruit. Close to great markets of Prairie Provinces. Soil varied and adapted to all kinds of agriculture. Good transportation by rail and water. Abundant fuel supply. Price of improved lands, \$25 to \$150 per acre. Hunting, fishing, boating and bathing. Nakusp is the commercial, educational and banking centre. The district has developed greatly in the last few years. Alt.

Unimproved tracts of 10 and 40 acres cost \$20 (44) per acre. Write for free pamphlets and all information to Carmichael & Moorhead, Limited, Port Alberni, or Victoria, B.C., and read carefully the paragraph on page 30, under heading "Vancouver Island, Alberni and E. Coast District."



Young Orchard under irrigation at Kelowna, B. C.; where The Central Okanagan Lands, Limited, has its holdings. Read the paragraph headed "Okanagan Valley, Kelowna District, The Central

1,413 ft. Write Sec. Bd. Trade, Nakusp, B.C. See description of Nakusp, p. 53, and illustration, p. 54.

ASHCROFT DISTRICT—BASQUE FRUIT FARMS.

These irrigated farms (see photograph on page 6) are 200 miles from Vancouver, on C.P.R. and C.N.R. main lines, near Ashcroft. Fruit grown is of finest flavour, with perfect colouring, and keeps well. The sun shines 340 days in the year. Apples from neighbouring orchards have won prizes in London, Eng., and other National shows. While orchard matures potatoes can be grown between trees to net \$200 per acre. Good hunting and fishing. Fine climate, lovely scenery. Price of land \$375 per acre, with water rights. Write Natural Resources Security Co., Ltd., 606-615 Bower Bldg., Vancouver, B.C.

BRITISH COLUMBIA FARM LANDS—THE JOHN MCLEOD CO.

We have for sale tracts of land varying in size from 500 to 50,000 acres at \$7 to \$50 per acre, according to location. Certain portions require irrigation, other portions ready for immediate settlement. Write for full details to The John McLeod Co., 516 Pender St. W., Vancouver, B.C.

CRANBROOK DISTRICT.

An area of 500,000 acres suitable for fruit culture, mixed farming and stock raising lies around Cranbrook (see p. 41), in the E. Kootenay Valley, between Rocky Mountains and the Selkirks. It extends from U.S. boundary, 175 miles, to C.P.R. main line; width varies from 5 to 15 miles. The land lies in a series of level benches. Soil is rich clay loam, light in colour, but rich in plant nutrition. All kinds of hay, grain, vegetables and fruits raised in abundance. Stock raising is lucrative, winter feeding not always necessary. A permanent home market provided by coal and other mining industries, lumbering and railroad operations, which give this district a monthly payroll of over one million dollars. At present 90% of food supply is imported. Transportation east and west by C.P.R.; north and south by G.N.R. and Kootenay Central. Prices, raw land from \$5 to \$15 per acre; improved farms, \$15 to \$50; fruit lands, \$15 to \$150. Write Sec. Bd. Trade, Cranbrook, B.C. See illustration, p. 44.

CRANBROOK DISTRICT—BEALE & ELWELL.

Comprises 300,000 acres of bench, bottom, prairie and swamp lands, clay subsoil. Winter wheat, oats, hay, roots of all kinds, potatoes, etc., do well. Crow's Nest Pass Coal fields, Northwest Territories, and big local market

creates the demand. Raw lands \$15 an acre and up, advancing rapidly. Improved farms \$25 per acre and up. The Crow's Nest Pass Branch of the C.P.R. traverses the valley east and west and north and south. The centre is Cranbrook, 3,000 ft. above sea level, with a population of 4,000. Write for all further information to Beale & Elwell, established 1897, Cranbrook, B.C.

CRANBROOK DISTRICT—R. B. BENEDICT. Tracts of from 5 to 50,000 acres improved or unimproved, with or without irrigation, may be obtained suitable for subdivision with good transportation facilities. Present prices, \$5 to \$300 per acre; will be increased by railway construction. The nearby mining and lumbering industries afford good market for hay, grain, vegetables, fruit and stock. They use 90% more produce than this district grows. Write R. B. Benedict, Box 264, Cranbrook, B.C.

FERNIE DISTRICT. City is situated in a valley famous for its beauty. Mountain scenery is unrivalled. Monthly payroll of city alone averages \$200,000. This insures big cash returns for fruit and garden truck. Price of farm lands \$25 to \$100 per acre. Good railway facilities. See description of Fernie, p. 45. Write Sec. Bd. Trade, Fernie, B.C. See illustration, page 48.

FRASER RIVER VALLEY—MCLEOD, MARK & CO. An ideal agricultural centre. Soil varies from rich alluvial, best adapted for dairying, to the lighter soils, some of which are capable of producing the finest fruit. No irrigation. Transportation well provided for by steam and electric railroads, and by the Fraser River. We have farms for dairying and mixed farming. Also 10-acre lots easily cleared, good fruit land at from \$100 to \$125 per acre. 10-acre lots for market gardening, all clear, at \$300 per acre. Apply to McLeod, Mark & Co., 403 Pender St., Vancouver, or at New Westminster.

FRASER VALLEY—VANCOUVER TRUST CO., LTD. We have for sale improved and unimproved fruit lands throughout the Lower Fraser Valley, with excellent shipping facilities to the coast cities and N.W. Territories; prices, \$50 up, according to improvements. Also stock and general farms, 100 to several thousand acres, with and without stock, and ample water rights for irrigation. Much of this is being taken up for fruit growing. See also our paragraph under heading "Vancouver District." Vancouver Trust Co., Ltd., 614 Pender St., Vancouver.

FRASER RIVER VALLEY—WHITE, SHILES & CO.

Extends 80 miles from Gulf of Georgia to Chilliwack, traversed by 3 steam railways and 1 electric car line from end to end. Soil varies from deep alluvial loam, producing enormous crops of hay, oats, and roots, to lighter upland, suited to fruit growing and dairying. Water plentiful. Sure market at good prices for everything that can be produced. Lands can be bought outright in lots, 1 acre to 1,000 acres, at \$40 (£8) to \$300 (£60) per acre, according to location and degree of development. Write us stating what amount you have to invest, how much land you want, what kind of farming you want to take up; we will gladly furnish all information. White, Shiles & Co., New Westminster, B.C.

INTERIOR—ALVO VON ALVENSLEBEN, LTD. Tracts from 2,000 to 100,000 acres can be obtained for colonization purposes, or to hold for future rise; price from \$6 to \$10 per acre. This is our specialty. See also our two paragraphs under headings "Vancouver District" and "Vancouver Island." Write Alvo von Alvensleben, Ltd., Vancouver, B.C.

KAMLOOPS DISTRICT. Centre of the famous dry belt. Air is pure, light and bracing. Excellent transportation facilities to all commercial centres in the west, also east, north and south. Government Lands for pre-emption may be had along the line of the C.N.R. route leading out of Kamloops. Price of improved lands \$5 to \$40 per acre. Improved lands for orchards and other purposes, \$100 to \$250 per acre. The soil throughout is highly fertile and productive. Both large and small fruits are produced in abundance. Roots of every description grown successfully. Wheat, oats, barley, rye and the several grain cereals. Poultry, stock raising and mixed farming are successful industries. See description Kamloops, page 49, and write John F. Smith, Sec. B.C. Inland Bd. Trade, Kamloops, B.C. See illustration, page 50.

NELSON DISTRICT. In the immediate vicinity of Nelson, as well as throughout the greater part of the District of West Kootenay, of which Nelson is the commercial centre, are found lands suitable for the cultivation of apples, pears, plums, strawberries, and all small fruits. These lands, generally speaking, lie along the banks of rivers and lakes, which afford ready means of travel and communication. Mountain streams give a plentiful supply of water. Irrigation, however, is not always

needed. Owing to the peculiar soil, climate and situation, the fruit of Nelson District ranks for size and flavour among the best to be found on the continent. A ready and assured market exists in the adjacent provinces of Manitoba, Saskatchewan and Alberta, where fruit is not grown. For description of Nelson, see p. 55, and illustration, page 58. Write E. K. Beeston, Sec. Bd. Trade, Nelson, B.C.

NELSON DISTRICT—BRYDGES, BLAKEMORE & CAMERON, LTD. The fruit lands comprise some thousands of acres along the W. arm of Kootenay Lake, the Slocan Lake and Lower Arrow Lakes. Soil is peculiarly adapted to fruit growing. Vegetables, pears, apples, peaches, grapes, plums and all smaller varieties of fruits, strawberries, raspberries, etc., are grown successfully. Delicate fruits reach the markets of E. Kootenay coal mines and the prairie provinces on same day as picked. A 10-acre orchard can be planted and brought to a paying basis in 4 years for about \$3,500. We own large tracts of Kootenay Fruitlands for sale, most of which are near the C.P.R. Tourists' Hotel at Proctor. Write for illustrated pamphlet, Brydges, Blakemore & Cameron, Ltd., Nelson, B.C. See photograph, page 14.

NELSON DISTRICT—WARD, BURMESTER AND VON GRAEVENITZ. Fruit farms in W. Kootenay, 10 miles from Nelson. C.P.R. runs through these farms, some of which are owned by clients from England of public school and ex-army officer class. Soil deep, rich and warm. Land all of bench formation. Sun exposure long. See also our paragraph under "Vancouver (New Westminster) District." Write Ward, Burmester & von Graevenitz, 411 Pender St. W., Vancouver, B.C.

NEW WESTMINSTER DISTRICT. Comprises 4,900,000 acres, with less than 100,000 inhabitants. Fully two-thirds of this district is rich soil, producing enormous crops of roots, with prolific orchards, and fields yielding 30 and 40 bushels of wheat and double or treble this amount of oats. The pasture is equal to that of Kent or Devonshire. The B.C. Elec. Ry. traverses a rich dairy district for 70 miles east, and the C.N. Ry. (transcontinental) will soon open up a new fruit district. With men and capital to develop industries, plant orchards, raise cattle and extend fisheries, this will become the greatest food producing area in Canada. City is well lighted, clean and sanitary, and has the only weekly market in the prov-

ince. Write Chas. H. Stuart Wade, Sec. Bd. Trade, New Westminster, B.C. See description New Westminster, p. 57. and illustration, page 60.

NICOLA VALLEY. Land is being subdivided for fruit culture, prices \$25 to \$50 per acre and higher in choicest localities. Water supply is ample, climate genial with prevailing sunshine. Good opportunities for mixed farming, fruit culture, stock raising, hog raising, dairying and bees. Crop failures are unknown. Valley now reached by branch line from Spence's Bridge. Will soon be traversed by 2 transcontinental lines, C.P.R. and G.N.R. Good market for all products, demand in many lines exceeding supply. Write Sec. Nicola Valley Bd. Trade, Nicola, B.C. See description of Merritt and Nicola, pp. 53 and 57, and illustration, page 62.

NICOLA VALLEY—MACAULAY & NICOLLS. We have for sale several hundred acres of level land in Nicola Valley, traversed by small rivers, flanked by hills affording grazing for stock. Soil varies from warm sandy loam to heavy clay loam, producing rich crops of clover, timothy, alfalfa, grain, roots and fruit. Railway station on boundary of property, good market at large coal mines in valley or at Vancouver. Write Macaulay & Nicolls, 414 Seymour Street, Vancouver, B.C.

NICOLA VALLEY—THE SOUTHERN B.C. LANDS AND MINES. Three additional railway are now under construction in southern B.C., viz., the Canadian Northern, Great Northern and Kettle Valley Ry. This network of railways, with the existing C.P.R., will give access and transportation facilities to an agricultural and mineral belt of enormous possibilities, with the Nicola Valley as the centre. Write J. B. Radcliffe, Mgr. The Southern B.C. Lands and Mines, Merritt, Nicola Valley, B.C.

NORTH VANCOUVER SUBURBS—J. J. WOODS & CO. Upon good roads, close to N. Vancouver, (see description, p. 59,) we have, at \$250 per acre up, most desirable pieces of acreage, 5 to 100 acres, suitable for raising small fruits and poultry, which commands good prices at all seasons. N. Vancouver has grown from 2,000 in 1907 to over 5,000, and has already a large boiler works and a marine ry. accommodating vessels of 1,700 tons. A phenomenal growth is assured. The plans have been passed for the entry of the railroads into N. Vancouver, and the subsidies granted for the bridge over the Second Narrows. A floating dry-dock Co., subsidized by the Dominion

Government, will begin construction at once. It is expected large grain elevators will be erected here to handle grain output of N.W. Provinces. Write us for any information about opportunities in business or farming. J. J. Woods & Co., North Vancouver, B.C.

OKANAGAN VALLEY—ENDERBY DISTRICT. This district comprises low meadow lands along the Shuswap River, with bench lands and rolling valley, ideal for fruit and vegetables, plenty of grass and water for stock, sheep and swine. Poultry win prizes in all big shows. Ample timber for all purposes. Good roads. 10 acres here in apples, pears, prunes and plums, are an independent living. See description of Enderby, p. 43. Write Sec. Bd. Trade, Enderby. See illustration, page 46.

OKANAGAN VALLEY—KALEDEN—JAS. RITCHIE. Comprises 3,000 acres, sub-divided into 5 and 1-acre lots, situate in a semi-circle on Lower Okanagan Lake. Reached by motor-boats from Penticton (10 miles north) terminal landing of C.P.R. steamers, and by motor or stage from G.N.R. station at Keremeos, 22 miles s. New G.N.R. line from United States surveyed through the townsite. Soil mostly lake silt, of great depth, uniform throughout, is pronounced admirably adapted for fruit culture. A modern pressure pipe system installed by the Kaleden Power and Irrigation Co. supplies water for irrigation and domestic use to every lot on the tract. Apples, apricots, peaches, pears, plums, cherries, grapes, canteloupes, the finest varieties, grow in abundance. Spitzenberg and Yellow Newton apples grow to perfection. They fetch, wholesale, \$2.50 to \$3.00 a box. 3-year-old trees have averaged \$5 a tree. 135 trees can be planted in 1 acre. Young trees make annual limb growth of 2 to 3 ft., heavily laden trees, 2 to 3 ft. Townsite surrounded by lovely scenery, has post office, general store, orchard, boarding house, telephone and charming beach, with sheltered coves for bathing and boat-houses. Sunshine is constant, with light rain showers in the spring and sometimes in October and November. No storms; no severe cold. Write James Ritchie, W. Summerland, B.C. See illustration, page 10.

OKANAGAN VALLEY—KELOWNA DISTRICT. Kelowna is beautifully situated on Okanagan Lake, with 65,000 acres of rich soil in one area, and plenty of irrigation water, 3,000 acres already planted in orchard. Chief products, all fruits of temperate zone; tomatoes, onions

and other vegetables; cigar leaf tobacco made up locally into cigars. Summers dry and sunny, winters short and mild. Ready markets for fruits and vegetables in the prairie provinces, for apples in Great Britain and Australia. Level gravel roads, rural telephones. Transportation by daily C.P.R. steamer; several freight boats and car-barge. Kelowna has won Gold Medal N.W. Fruit Growers' Assn., 1907. \$4,400 in prizes, together with cups and medals National Apple Show, Spokane, 1908. Gold Medal Provincial Exhibition, New Westminster, 1910. Medals Royal British Horticultural Society, 1905 to 1909. See description of Kelowna, page 31. Write Sec. Bd. Trade, Kelowna. See illus., page 52.

OKANAGAN VALLEY—KELOWNA DISTRICT—THE CENTRAL OKANAGAN LANDS, LTD. We own 6,000 acres of choice irrigated fruit lands, level and clear of timber, from $\frac{1}{2}$ mile to 6 miles from Kelowna, with beautiful view of the town and Okanagan Lake. A good portion is cultivated. An irrigation system is installed with concrete-lined ditches, main arteries of steel pipe and steel flumes. An expert orchardist is engaged to tend young orchards. Purchasers can have their lots planted and cared for until bearing. 10 and 20-acre lots offered at \$200 per acre upwards, easy terms. Write for illustrated booklet to The Central Okanagan Lands, Ltd., Kelowna, B.C. See illustration, page 18.

OKANAGAN VALLEY—PEACHLAND DISTRICT. All the land is under irrigation, controlled by the Peachland Townsite Co. Unimproved land under irrigation sells for \$100 per acre; bearing orchards, \$500 to \$1,000 per acre. Soil mostly sandy loam. Charge for irrigation water lowest on the lake. Good roads, electric light, telephone, bank. See description of Peachland, p. 59. Write W. A. Lane, Reeve, Peachland, B.C. See illus., page 64.

OKANAGAN VALLEY—PENTICTON DISTRICT. Comprises 7,000 acres of sandy loam soil, producing peaches, apricots, nectarines, cherries, apples, vegetables, small fruits. Prices from \$125 per acre for unimproved land to \$850 for bearing orchards. Town owns and operates excellent irrigation system. Domestic water supply and electric plant being installed. 2 railroads under construction will bring Penticton within 9 hours of Vancouver and make it a divisional point. Situated between two large lakes, climate equable, good fishing and hunting. Write Sec. Bd. Trade, Penticton, B.C. See illus., page 66.

**OKANAGAN VALLEY—PENTICTON DISTRICT.—
THE SOUTHERN OKANAGAN LAND CO., LTD.**

We have irrigated at Penticton about 4,000 acres of choice fruit land. About 75% of this has been disposed of in 10-acre tracts. We also own the magnificent valley of the Southern Okanagan, extending to the International Boundary. Some 12,000 acres of this will shortly be irrigated and offered for sale at from \$150 to \$300 per acre. Soil is light to medium clay loam covered with sage brush and bunch grass. All this land borders the Okanagan River and the charming lake of Osoyoos, and constitutes the finest tract of fruit-growing land in British Columbia. See description of Penticton, p. 61. Write The Southern Okanagan Land Co., Ltd., Penticton, B.C.

OKANAGAN VALLEY—SUMMERLAND DISTRICT.

On Lake Okanagan. Daily Canadian Pac. Ry. steamers throughout the year. Scenery has been compared with Northern Italy. Delightful climate. Soil wonderfully fertile. Under irrigation peaches, apples, pears, plums, apricots, cherries, grapes, and all small fruits grow to perfection. Irrigated area, 6,000 acres, will be largely increased. Unlimited permanent water supply. Apples have won highest awards in Great Britain, against all colonies for 4 successive years. Eminent fruit experts assert confidently that geological conditions assure permanence of fruit industry. See description of Summerland, p. 67. Write Secretary Bd. Trade, Summerland, B.C. See illustration, page 72.

OKANAGAN VALLEY—SUMMERLAND DISTRICT—

CHAS. H. CORDY. Summerland, the centre of the Peach Belt in the Okanagan Valley, has now proved, by its success at the First Canadian Apple Show, that it cannot be surpassed for the production of the highest grade of apples. I have lived in Summerland since its earliest beginnings as a fruit district and have seen 99% of the orchards planted. I am, therefore, in a good position to advise intending settlers as to the most suitable investment. See description of Summerland, p. 67, and write Chas. H. Cordy, Summerland, B.C.

**OKANAGAN VALLEY—VERNON DISTRICT—COLD-
STREAM ESTATE CO., LTD.**

The Coldstream Estate Co., Ltd., near Vernon, B.C., in the Okanagan Valley, owned principally by the Earl of Aberdeen and Mr. James Buchanan, will sell fruit lands from 10 acres upwards, all under the White Valley Irrigation and Power Company's

up-to-date irrigation system, which is controlled by the Coldstream Estate Company's shareholders. Water rates are approved by the Government, and the purchaser pays only for what he uses. A first-class and plentiful domestic water supply is assured. The purchaser can have lands cultivated by the company, who have 435 acres of orchard, for which they employ only first-class fruit experts; thus the interest of the purchaser is identical with the company's. Good roads, telephone, and facilities that appeal to the fruit-grower who wishes to have the social advantages of a good neighbour. See description of Vernon, p. 69. For further information and particulars and pamphlets apply to the Local Agent, P. Dickson, Vernon, Okanagan Valley, B.C., or the Secretary, at Clarence House, Martins Lane, Cannon St., London, England. See illustration, page 12.

OKANAGAN VALLEY—VERNON DISTRICT—R. FITZMAURICE.

This valley (Vernon is the centre) combines the fertility of the best counties of England and Ireland with the charms of their famous lake regions. A common return from fruit growing is 40% net, often it is higher. Hay, horses and cattle give large returns. Winters short and mild, with little snow. First mortgages on improved productive properties yield 8% per annum. I have had 10 years' agency experience in the Okanagan Valley, and formerly in Carlow and Queens Cos., Ireland. I will gladly answer enquiries about mortgages, houses and fruit lands. R. Fitzmaurice, Estate and Financial Agent, Notary Public, Vernon, B.C.

OKANAGAN VALLEY—VERNON DISTRICT—ORCHARD, JOHNSTON & CO.

In its opportunities for agriculture and fruit growing, this great district differs little from other parts of the Okanagan. But its central position gives Vernon special advantages. Land costs from \$15 per acre up, according to classification. Young orchards from \$250 per acre up, farming lands from \$20 to \$100 per acre and upwards. "Orchard's Guide and Directory to the Okanagan" (illustrated), a book endorsed by the Board of Trade, gives full details regarding climate, soil, prices, conditions, outlay and returns, etc. Both the book and the business of this firm are based upon many years of practical experience. For description of Vernon see p. 69. If you seek any information about lands in this district write us for free particulars and price lists. Orchard, Johnston & Co., Vernon Okanagan Valley, B.C.

REVELSTOKE DISTRICT. Situate on the railway belt. Lands for 20 miles each side of C.P.R. are administered by Department of Interior, with resident agent at Revelstoke, see p. 65. New homestead laws are in preparation. Along the Columbia valley much land is suitable for fruit-growing. Apples, pears, plums, cherries and all small fruits are grown successfully without irrigation. Revelstoke strawberries won highest honours at Dominion Fair, Calgary, 1908. An unlimited market for small fruits on the prairies is reached in 12 to 18 hours by C.P.R. express, 3 times daily. Cleared land can be bought in 5 and 10-acre lots. Government is rapidly extending roads through district. Write for literature to Sec. Bd. Trade, Revelstoke, B.C. See illustration, page 68.

SALMON ARM DISTRICT, on Shuswap Lake, comprises 20,000 acres of bench and valley lands. Alt., 1,200 ft., 316 miles e. of Vancouver, 328 miles w. of Calgary, on C.P.R. main line, boat service on lake to northern waters. Soil ranges from sandy loam to heavy clay and black muck. Prices, raw land \$60 per acre up; improved land, \$350 up. Apples, plums, pears, cherries, grapes, strawberries, and all kinds of vegetables, also timothy, clover, wheat, oats and barley, grow to perfection under an annual rainfall of from 20 to 24 inches, without irrigation. Markets, Prairie Provinces and inland B. Columbia. Mild winter. Good fishing and shooting. For illustrated descriptive literature, write Sec. Bd. Trade, Salmon Arm, B.C. See description, p. 65, and illustration, page 70.

SALMON ARM DISTRICT.—THE SALMON ARM REALTY CO., LTD. We offer, at reasonable prices, young and bearing orchards, also dairy and hay farms from 10 acres up. This is a well-known non-irrigated fruit district on the main line of the C.P.R. Convenient transportation to good markets. Fine climate. Lake Shuswap provides good fishing, hunting and boating. Write for price lists and free illustrated book, "Fruits and Farms for Rich Returns." Questions gladly answered. F. B. Howarth, Man. Dir. The Salmon Arm Realty Co., Ltd., Salmon Arm, B.C.

SALMON RIVER VALLEY—P. J. GLEAZER & CO. We have fruit farms for sale in 5, 10 and 20-acre tracts, in the beautiful Salmon River valley, in the Kootenay District of B.C., on the future automobile road from the Coast to Alberta. Payments on easy terms extending over 4 years; work guaranteed to capable and efficient settlers, at 10 shillings per day, to be applied on deferred

payments. The land is low and easily cleared, the soil is that which made Kootenay fruit farms famous. Splendid climate. Abundant water for all purposes; irrigation unnecessary. Fine hunting and fishing close at hand. We have plenty of good range land for grazing cattle, also revenue-producing orchards on the Kootenay and Arrow Lakes. Write for descriptive pamphlet. P. J. Gleazer & Co., Box 316, Nelson, B.C.

SOUTH THOMPSON VALLEY DISTRICT. Sunnyside, in the heart of British Columbia's famous dry belt, has excellent shipping facilities on the main line of the C.P.R. and on the S. Thompson River. Has perfect fruit soil of great depth, cleared and ready for planting, and a mild, healthful climate. Apples from this district have repeatedly won first prizes over all competitors. Water plentiful for irrigation and domestic use. An ideal place to live in. Five and ten-acre blocks are now offered at \$300 per acre (which includes water), and on easiest terms. Write for illustrated folder to Ross & Shaw, 318 Hastings St. W., Vancouver, B.C.

VANCOUVER (NEW WESTMINSTER DIST.)—WARD, BURMESTER AND VON GRAEVENITZ. 3-acre strawberry farms for sale on instalment plan. See also our paragraph under Nelson District. Ward, Burmester & von Graevenitz, 411 Pender St. W., Vancouver, B.C.

VANCOUVER DISTRICT—ALVO VON ALVENSLEBEN, LTD. In Lulu Island delta, Coquitlam and Pitt River meadows, good bottom lands are a safe investment. Good soil. Near Vancouver. See also our two paragraphs under headings "Interior" and "Victoria District." Write Alvo von Alvensleben, Ltd., Vancouver, B.C.

VANCOUVER DISTRICT—EDMUND FRANCIS. Any questions relating to unimproved and improved farms and fruit lands, also city properties, will be gladly answered. We have for sale tracts of land which will furnish a handsome profit on sub-division, also improved farms on easy terms. Our free list will be furnished at once on application. Edmund Francis, Bower Building, Vancouver, B.C.

VANCOUVER DISTRICT—LOEWEN & HARVEY, LTD. The Apple Show held at Vancouver in October, 1910, has been described as the greatest apple show in the world. The fruit exhibited was singularly free from any blight or pests, the result of careful pruning, spray-

ing and cultivating, but chiefly of suitable environment. Among the districts represented were the Okanagan, Kamloops, Salmon Arm, and others within easy access of Vancouver. The apple industry of this country is permanently established with assured foreign markets in the Western Provinces and Great Britain, and a large home market at Vancouver and other B.C. cities. Fruit as a commercial commodity can only be grown on suitable lands. Write for our list of fruit lands and dairy farms in this district. Loewen & Harvey, Ltd., 420 Cambie St., Vancouver, B.C.

VANCOUVER DISTRICT—VANCOUVER TRUST CO., LTD. We have for sale a large list of farms used for general agriculture, combined with dairying, fruit growing, hogs, etc., from 20 to 75 miles from Vancouver, with good train and boat connection with coast markets, also market garden lands in plots of 5 acres and over, close to Vancouver and New Westminster. First-class service by train, electric cars and boat, 'phone service, electric light, etc. Price per acre, ready for plow, \$225 to \$300. See also our paragraph under heading "Fraser Valley." Vancouver Trust Co., Ltd., 614 Pender St., Vancouver, B.C.

VANCOUVER ISLAND—ALBERNI AND E. COAST DISTRICT—CARMICHAEL & MOORHEAD. The Esquimalt and Nanaimo Ry. have disposed of the last large blocks of agricultural lands in the Alberni and E. Coast district, between Englishman's River and Comox, to Carmichael and Moorhead, Ltd., of Port Alberni and Victoria, who are having the lands surveyed and classified. Tracts 20 to 40 acres may be bought at \$20 per acre for unimproved, and \$150 to \$200 per acre for improved lands, on long terms of payment. In these districts all large and small fruits grow to perfection, including peaches, plums, apples, pears, strawberries, raspberries, gooseberries and hardy varieties of grapes, also all garden and field produce known in the temperate zone. Climate mild and equable, with quantities of sunshine. For agricultural products on the island, prices will always be high, assuring the settler an abundant return. The quantity is limited. The lumbering and mining industries and the growing cities afford a permanent strong home market. Write Carmichael & Moorhead, Ltd., Port Alberni, B.C. See illustration, page 39.

VANCOUVER ISLAND—B.C. LAND AND INVESTMENT AGENCY, LTD. We have for sale wild and improved lands in small or large parcels. The following are samples: (1) Esquimalt District, 400 acres, 100 cultivated, uncleared land, nearly all first-class, will grow anything. 8-roomed house, barns and outhouses, running stream of water; price \$50 per acre. (2) Cordova Bay, 20 acres, 7 acres in orchard, 6-roomed house, good frontage on the bay, 8 miles from Victoria, price \$8,000. (3) Gordon Head, 10 acres, 4 acres cleared, 600 fruit trees, 2 acres strawberries, good spring, beautiful view of the Straits, 6 miles from Victoria, price \$5,250. (4) Colwood, 11 acres, 8 miles from Victoria, 6-roomed cottage, outhouses, etc., would make first-class poultry farm, price \$2,650. (5) North Saanich, 90 acres first-class land, practically all cleared, fronting on Union Bay, good farm buildings, 17 miles from Victoria, price \$220 per acre. Write for our complete list of suburban and farming lands. B.C. Land and Investment Agency, Ltd., 922 Government St., Victoria, B.C.

VANCOUVER ISLAND—COWICHAN DISTRICT. Contains 35,700 acres of cultivable land, varying from mountain to sea coast, 14 miles long by 10 miles wide. Abundant water supply. Soil black, red or sandy loam. Good transportation facilities, rail and water; good roads. Some lumbering and mining. Dairying, chicken raising, fruit farming successfully carried on. Cowichan butter and eggs find ready market at good prices. Unimproved land, \$25 to \$150 an acre; improved land, \$200 to \$300. A superior class of settlers coming in. District rapidly developing. Write to Clerk of Municipal Council, Duncan, B.C. See description of Duncan, p. 43, and illustration, page 42.

VANCOUVER ISLAND FARMS—DAY & BOGGS. A list of farms for sale on the Island can be obtained from us. We have 20 years' local experience and have correspondents and agents in the south and more settled sections. A mild, equable climate, moderate rainfall. Soil varies from rich bottom lands to light loams. All kinds of fruit grown; high prices secured in early market. Good profits in dairying, poultry, mixed farming, hog raising. Creameries established at many points. Free education, good roads, no irrigation needed. Permanent home market afforded by development of mining, lumbering, fishing. Growth of towns assured by railway construction. Good sport, fishing and shooting.

Write for our home list, sent free, and any information about this district. Day & Boggs, Victoria, B.C.

VANCOUVER ISLAND FARMS—PEMBERTON & SON. Railroads are opening up a new territory 26 miles from Victoria. Lands here cost \$60 per acre. \$500 per acre have been harvested. We have also improved and wild lands in every district at \$25 to \$500 per acre. Write for illustrated booklet and list of properties for sale. Pemberton & Son, Victoria, B.C.

VANCOUVER ISLAND—ESQUIMALT & NANAIMO EY. COO. The company has large areas suitable for fruit growing and poultry, dairying and mixed farming. At Qualicum Beach considerable areas of cleared and partly cleared lands are on the market in 40-acre tracts. A beautiful, healthy climate, fine soil, and a great and rapidly increasing demand for poultry, eggs and dairy produce. Mixed farming can be most profitably undertaken. Write L. H. Solly, Land Agent, Victoria, B.C.

VANCOUVER ISLAND—NANAIMO DISTRICT. Offers great opportunities for fruit farming, dairying, poultry raising, truck farming and bee culture. The soil is a very fine loam with clay subsoil, suitable for all kinds of fruit. Price, according to location, \$40 to \$100 an acre for rough land, \$100 to \$300 for cultivated land. A record for the average yield of oats on 5 acres is 142 bus. per acre; record on 32 acres, 102 bus. per acre. Nanaimo, Victoria and Vancouver offer a ready and assured market. First-class schools. See description of Nanaimo, p. 53. Write H. R. Hickling, Sec. Citizens' League, Nanaimo, B.C. See illustration, page 56.

VANCOUVER ISLAND—VICTORIA DISTRICT—ALVO VON ALVENSLEBEN, LTD. The southern part of Vancouver Island is eminently adapted to mixed farming. Poultry, eggs, butter, milk, pigs, fruit, vegetables, command high prices in Victoria and neighbouring towns. Good roads, 2 railways, another railway to be built. Rural telephone communication with Victoria. Price of farm lands, \$150 to \$200 per acre. Grouse, pheasants, quail, deer and game of all kinds abound. See also our two paragraphs under headings "Interior" and "Vancouver District." Write Alvo von Alvensleben, Ltd., P.O. Drawer 618, Victoria, B.C.

WEST KOOTENAY DISTRICT—KOOTENAY ORCHARD ASSOC., LTD. We own and have for sale on easy terms choice blocks of fruit land, 200 to 5,000 acres.

selected several years ago when we had the whole country to choose from. For quality of soil, location and transportation they cannot be beaten. Prices will show handsome profits on sub-division. Also on easy terms 5 and 10-acre tracts in established orchard sub-divisions. Prices moderate. No isolation. School, stores, church, post office, daily trains or steamers. Write Kootenay Orchard Association, Ltd., Box 1103, Nelson.

Fishing

ANCHOVIES AND SARDINES. Both fish are plentiful and said to be of excellent quality. Some experiments have been made in canning.

COD. The cultus cod, the skill, or black cod, the red rock cod, and many other varieties abound. In deep sea fishing hand lines and dorles are used. The fish require a special drying to harden the glutinous substance under the skin. The Whitman dryer, a mechanical process, is used successfully.

CRABS. Large crabs are found in some localities, and take the place of lobsters, which are not found. Canning crabs has been tried.

BRITISH COLUMBIA FISHERIES. The shore line extends nearly 7,000 miles, with a protected territory of nearly 30,000 square miles abounding with commercial fish. These include salmon, herring, sturgeon, bass, oolachans, smelts, flatfish, black cod, perch, trout, skill, sardines, anchovies, shad, oysters, crabs, shrimps, prawns. The production of the B.C. fisheries for 1908 was \$6,465,038. Total value of equipment, including sealing fleet, was \$4,767,863; men employed, 13,251, including 417 seal hunters. The industry is capable of enormous expansion. A large number of fishing interests have combined in the British Columbia Packers' Association with a capital of \$2,750,000. Write to Bureau of Provincial Information, Victoria, B.C., for Bulletin No. 20, "The Fisheries of British Columbia."

FLOUNDERS. The catch is limited to local demand. There are several varieties, some of which are marketed as turbot and sole.

GAME FISH. The lakes and rivers on the Island and mainland are well stocked with salmon and trout. White-

34 OPPORTUNITIES IN BRITISH COLUMBIA

fish abound in northern waters. Salmon are caught with a trolling line. The steel head trout, averaging 12 lbs., are very gamey and take a fly. Smaller specimens of Kamloops trout take a fly

HALIBUT. The British Columbia halibut fisheries are valued at \$700,000 a year. They are largely in the hands of U.S. firms, who make large catches. The fish weigh up to 100 lbs. or more, but generally do not run so large as formerly. A Canadian company has been formed to work the halibut fisheries of Queen Charlotte Islands, said to be the richest in the world. Halibut is being shipped as far as Nova Scotia.

HERRING. The B.C. herring fisheries, already important, can be greatly developed. Herring are caught all along the coast, and in the north equal the large Labrador herring. If the movements of the school are ascertained by a scientific survey, herring can be caught all the year round. The catch at Nanaimo in 1908 was 20,000 tons, the bulk of which went to Japan. The total catch in 1908 was 45,146,800 lbs., an increase of over 40 million lbs. in 5 years.

OIL FISH. Dog fish, a small shark, abundant in the North Pacific, are rich in lubricating oil, the refuse being used as a fertilizer. The oil from coast factories in 1908 was worth \$59,000. Other oil fish are the ratfish and basking shark, which is tame and quite harmless. Rat fish oil is used in the finest works in watches, gun locks, etc. The production of fish oil and glue in 1908 was 142,480 lbs., value \$56,600; guano, 84 lbs., \$2,350. The industry can be greatly expanded.

OOLACHAN OR CANDLE FISH. Run in enormous quantities up the rivers and inlets. A delicious pan fish, about 9 inches long, too tender for carriage to distant markets. Oolachan oil, properly refined, might have a commercial value.

OYSTERS. The small, native oyster is found in many places. The production in 1908 was valued at \$12,750. With the growth of population there is a good opening for a profitable business.

SALMON. The B.C. salmon industry is threatened with serious injury by the lack of concurrent regulations on the coast of the State of Washington, which is traversed by the main schools of salmon passing from the sea to the Fraser River. To offset the destruction of salmon in the Puget Sound the Dominion Government have estab-

lished several fish hatcheries. There are several varieties: Sock-eye (or blue black), spring (or quinnat), coho (or silver), dog and hump-back (or chum). The sock-eye salmon in the Fraser River appear in greater numbers every fourth year. In 1905, 1,657,822 cases were put up. In 1906, an average year, 629,460 cases. In 1907, 547,459; in 1908, 543,689; in 1909, 958,500.

SEALING. In 1907 the sealing fleet and equipment was valued at \$367,650. The industry employed 197 white men and 220 Indians. 16 vessels secured 5,240 seals. Indians along the coast captured 157 seals, making the total Canadian catch 5,397 seals. Victoria is the headquarters of the fleet. In 1908 the catch of fur seals amounted to 4,954 skins.

SHELL FISH. The shell industry is unexploited. There are many fresh and sea water shells that could be turned to account. The abalone is common in British Columbia, and esteemed a delicacy. The shell can be developed, as in California, into a profitable business. There the shells are polished whole, or shaped into brooches, cuff pins and novelties, and the market is ever widening. Clams, cockles and mussels are found everywhere along the Coast. Output of canned clams in 1908 was 1,700 cans.

SHRIMPS. Shrimps and prawns abound on the Pacific Coast. A limited fishery is pursued. The development of a canning industry is capable of great expansion.

SMELTS. Two varieties are sold in local markets.

WHALING. The sulphur bottom is most common species, averaging 60 tons, value over \$500; hump-back, averaging 27 tons, value \$140; fin-backs, averaging 50 tons, value \$338. The right whale, which is rare, is valued at \$10,000. The Pacific Whale Co., employing fast steamers and machine guns, has 3 stations on Vancouver Island with modern plants. Average season's catch of the Co. over 600 whales. Japan imports whale meat and pickled whales' tails. Protection is needed to preserve the industry.

Forests and Lumbering

BRITISH COLUMBIA FORESTS. The forest area is estimated at 182,750,000 acres, including lands covered with small trees. The stand of merchantable timber is estimated by Dr. Judson F. Clark at 130 billion feet. The coast is heavily timbered to Alaska. The forest line

follows the shore and river valleys fringing the mountain sides. Along the coast, in close proximity to the forests, are many deep water harbours. The most valuable trees are douglas fir, cypress, red cedar, white spruce, western hemlock. Other trees include white pine, tamarack, balsam, yew, maple and cottonwood. On the coast trees attain much larger dimensions than inland. It is claimed that the B.C. coast climate can produce as much timber in 40 years as can be grown elsewhere on the American continent in a century.

Timber Lands Announcements

BRITISH COLUMBIA TIMBER LANDS—B.C. TIMBER & LAND CO., LTD. We have for sale large tracts of standing timber close to transportation in all parts of B. Columbia, on main line Canadian Pacific Railway. Fortunes are being made by investing now in timber lands. The lumber industry is flourishing owing to large demand in prairie provinces. Reliable reports and estimates made by our experts will be furnished intending investors. Our company also reports upon and deals in saw mills, mill sites, fruit farms and other lands. B.C. Timber & Land Co., Ltd., Head Office, Revelstoke.

DOMINION GOVERNMENT LANDS. All lands within twenty miles on each side of the Canadian Pacific Railway, known as the "Railway Belt," are the property of Canada. The total area is about 17,150 square miles. In addition there is the "Peace River Block," amounting to three and a half million acres, lying between longitude 120 and 122 degrees west, and between latitude 55 degrees, 30 minutes and 57 degrees north.

Mining

BRICK. Suitable clay deposits are found in all districts. The manufacture is increasing rapidly. A very good deposit of fire clay exists at Clayburn, near Vancouver, from which pressed brick and fire brick are being made. The Silica Brick and Lime Co. manufactures a light grey lime silica brick at Victoria.

BUILDING STONE. Some very good quarries of sandstone, granite and andesite have been opened up on tide water. Except on the coast there is little building in stone. See B C. Marble.

CEMENT. The Vancouver Portland Cement Co., manufacturing at Tod Inlet, 13 miles from Victoria, have a capacity of 300,000 barrels in a year.

COAL. Beds occur in Vancouver Island, the Crow's Nest Pass, at Princeton, Nicola and the Bulkeley Valley and the Queen Charlotte Islands. In 1909 actual production was practically confined to Crow's Nest Pass Collieries in East Kootenay, and the Wellington Colliery Co. and the Western Fuel Co., on Vancouver Island. The gross output was 2,400,600 long tons. The Crow's Nest Pass mines are 250,000 acres in extent. Total thickness, 300 ft.; 80 seams.

COKE. The output of coke in 1909 was 258,703 long tons. There are 424 ovens at Fernie, 464 at Michel, 240 at Carbonado. The porosity of the coke is 43.46, enabling a very rapid consumption.

COPPER. The output for 1909 was ⁴⁴597,245 lbs., having a gross value of \$5,918,522. The chief producers are the Granby Co., British Columbia Copper Co., and the Dominion Copper Co., which own their own smelters, and the Tyee, operating a smelter at Ladysmith on Vancouver Island. The Rossland production comes from the gold ores. Copper also occurs in the Yale, Kamloops, Nelson and Similkameen districts, and Queen Charlotte Island. The average assays of copper ores in the various camps, based upon the copper recovered, was: Boundary, 1.41%; Coast, 1.05%; Rossland, 0.75%.

GOLD, LODE. Value of gold produced in 1909, from lode mining, was \$4,924,090. About 95% of the gold produced is recovered from smelting copper-bearing ores. The only stamp mill of any importance is at Hedley, in the Osoyoos Mining Division.

GOLD, PLACER. The production in 1909 was about \$477,000. The Caribou District contributed half of this output. Individual miners produce 30%, chiefly from "drifting" operations, which can be carried on in the winter.

LEAD. In 1909 the production of lead amounted to 44,396,346 lbs., valued at \$1,709,259. The ore is generally treated at local smelters.

MARBLE. There are excellent marble quarries at Kootenay Lake, east of Kaslo, Lardo, and at Nootka, Vancouver Island.

38 OPPORTUNITIES IN BRITISH COLUMBIA

MINERAL PRODUCTION. The annual Mineral Production of British Columbia for the past ten years, as published by the Bureau of Mines, British Columbia, is as follows:

| | | | |
|-----------|--------------|-----------|--------------|
| 1900..... | \$16,344,751 | 1905..... | \$22,461,325 |
| 1901..... | 20,086,780 | 1906..... | 24,980,546 |
| 1902..... | 17,486,550 | 1907..... | 25,882,560 |
| 1903..... | 17,495,954 | 1908..... | 23,851,277 |
| 1904..... | 18,977,359 | 1909..... | 24,443,025 |

The decrease in 1908 is accounted for by the fall in the prices of silver, copper and lead.

PETROLEUM. Boring operations are under way in the Cariboo District. Indications of oil occur in Flathead Valley and Tooke.

PLATINUM. Is known to exist in various parts associated with placer gold in alluvial workings, but has not been mined hitherto except as a by-product.

SILVER. Total production in 1909 was 2,532,742 ozs., valued at \$1,239,270. About 72% of the silver is found associated with lead in argentiferous galena, the remainder with copper-bearing ores. The Slocan District, including Ainsworth Mining Division, produced 50% of the total output, and Fort Steele Division 24%, all from argentiferous galena.

ZINC. Total production in 1909 was about 10,000 tons of zinc ore and concentrates. Certain mines in the Slocan District produced small quantities of zinc blend as concentrates separated from argentiferous galena as a by-product. A concentrator is erected to treat zinc ore developed in the Blue Bell mine opposite Ainsworth. A zinc smelter has been erected at Frank, Alta., to treat B.C. ores. The Canada Zinc Co. have erected a small plant at Nelson to treat Slocan ores by electric process.

Professions

For requirements of all professions in British Columbia and other Provinces—fees, examinations, terms of service, etc., see Heaton's Annual.



Vancouver Island Fire, Near Port Alberni.

Descriptions of Towns

This gazetteer is revised every year, and includes certified official returns from local Boards of Trade and the municipal authorities of towns where no Board of Trade is established. Information is given generally as received. The Editors reserve the right to use information obtained from other reliable resources, and to edit the returns made, but they cannot, for obvious reasons, from their own knowledge, vouch for the absolute accuracy of every detail in each case. As a general rule entries in this Register are confined to towns over 400 population. Where possible, a reliable local reference is given, who will supply further information upon request. When writing to local reference, special attention may be secured by mentioning Heaton's Annual.

ABBREVIATIONS—Tel., Telegraph; Ex., Express; Pop., Population; Alt., Altitude—feet above the sea level. Altitudes are given as furnished by the Dominion Meteorological Office at Toronto.

ALBERNI. See Port Alberni.

ARMSTRONG, in Okanagan Valley, 32 miles from Sicom Junction on C.P.R. Dom. Ex. Tel. C.P.R. Hotels, Okanagan, Armstrong. 3 churches, high and public school, elevator (18 000 bushels), flour mill, creamery, brick plant, 5 saw mills, electric light plant, bank, 2 livery stables, sash and door factory, waterworks. Alt. 1,187. Pop. 800.

SPECIAL OPPORTUNITIES.—Paper manufacturing, steam laundry. Write Sec. Bd. Trade.

ARROWHEAD, on Columbia River and Arrow Lakes, 28 miles from Revelstoke on C.P.R. Dom. Ex. Tel. C.P.R. Hotels, Lakeview, Union, City \$1.50, \$2.00. 3 saw mills, livery stable, telephone, bank, hospital and various stores. Port of landing for C.P.R. boats, daily service. Alt. 1,413. Pop. 600.

SPECIAL OPPORTUNITIES.—Saw mill, tannery, fruit and grazing lands. Write Agent C.P.R.

ASHCROFT, on Thompson River, on C.P.R. main line. Dom. Ex. Tel. C.P.R. Stage line to Barkerville, 287 miles. Hotels, Grand Central \$2, Ashcroft \$2. 3 churches, 2 banks, newspaper, 2 livery stables, electric light plant, saw mill. Outfitting point for the Highland

Valley, a promising copper district. The gateway to the Cariboo country and Thompson Valley, where large areas are being irrigated for fruit raising. A fruit and vegetable district with mixed farming and cattle ranching. Alt. 1,004. Pop. 500.

SPECIAL OPPORTUNITIES.—Laundry, baker, confectioner, dentist. Write Sec. Ashcroft Business League.

ATLIN, on Atlin Lake, 45 miles from Kamloops. Steamers to Cairncross in Yukon territory, connecting with White Pass and Yukon Ry. Government building, hospital, skating and curling rinks, 3 saw mills, brick yard. This neighbourhood produces $\frac{1}{2}$ of placer gold of the province. Alt. 2,200. Pop. 850.

CAMBOURNE, on Fish River, on C.P.R. branch line. Dom. Ex. Tel. C.P.R. Steamer to Beaton, 12 miles. Public school, waterworks, electric light. Mining gold, galena, copper ores. Pop. 350.

CHILLIWACK, on Fraser River, 70 miles from Vancouver. Daily steamers to New Westminster. Ferry to Harrison Mills on C.P.R. B.C. Electric Ry. to Vancouver. G.N.R., Spokane to Vancouver, mountain portion building; C.N.R. transcontinental line building. Ex. and Tel. C.P.R. and C.N.R. Long dist. phone to Vancouver, Victoria, Seattle, etc. Hotels, Empress \$2 and up, Royal \$2. Harrison \$2. 2 banks, newspaper, *Chilliwack Progress*. High school and public schools. Agricultural Society Fair grounds and $\frac{1}{2}$ -mile race track. Electric light and power, waterworks system (gravity). Saw, planing, shingle mills, sash and door factory, machine shops, fruit canning factory, 2 creameries. Alt. 2,052. Pop. about 2,000.

COMOX (Vancouver Island) on Courtney River, 60 miles n.w. Nanaimo station. Ex. at Cumberland on U.C.C. Ry. C.P.R. steamer weekly to Victoria. Public school, 4 churches (Ang., R.C., Pres., Meth.). Tel. Government line. Pop. 750.

CRANBROOK, in fertile valley between Selkirk and Rocky Mountains on C.P.R. Crow's Nest br. Dom. Ex. Tel. C.P.R. Hotels, Cranbrook, Cosmopolitan, Royal \$2, Canadian, Imperial \$1, \$2 and 4 others. 6 churches, high and public schools, 3 newspapers, 3 banks, 2 sash and door factories, 15 saw and planing mills within 20 miles (dally cap. 500,000 ft.), brick and terra cotta works, aerated water works, foundry. A fruit and agricultural

:: The Gem of ::
Vancouver Island

COWICHAN DISTRICT



Cowichan River Valley

The District of good homes, pleasant neighbours and profit in agriculture. Cowichan butter and eggs have a wide reputation. The paragraph headed "Vancouver Island - Cowichan District" on page 31, and description of Duncans on page 43, are worth reading - after that,

Write the CLERK, MUNICIPAL COUNCIL, DUNCANS, B.C.

district. delightful climate, good hunting and fishing.
Alt. 3,014. Pop. 3,500.

SPECIAL OPPORTUNITIES.--Men with capital for farming and fruit farming, creamery, first-class hotel. See under Agricultural and Fruit Lands Announcements, page 19, and illus. Advt. Write Sec. Bd. Teade

CRESTON, on Crow's Nest Pass Div. of C.P.R., half-way between Nelson and Cranbrook, 68 m. On G.N.R. branch, joining C.O.R. at Wyndel. Dom. Ex. Tel. C.P.R. Hotels, Creston, Munro, 4 churches, school, bank, telephone, waterworks, saw mill, sash and door factory. 50,000 acres of rich fruit lands in vicinity. Creston strawberries are famous. Pop. 800.

CUMBERLAND (Vancouver Island), on foothills of Buford Mts., 60 miles n. of Nanaimo. Ry. to Union Wharf, 13 m. on Bayne Sound. Tri-weekly s.s. from Nanaimo, s.s. from Vancouver and Victoria. Hotels, Cumberland, Waverly, Vendome \$1 to \$2. Waterworks, electric light, saw mills. Wellington Colliery Co. ship 10,000 to 15,000 tons of coal daily. Lumbering. Pop. about 2,000.

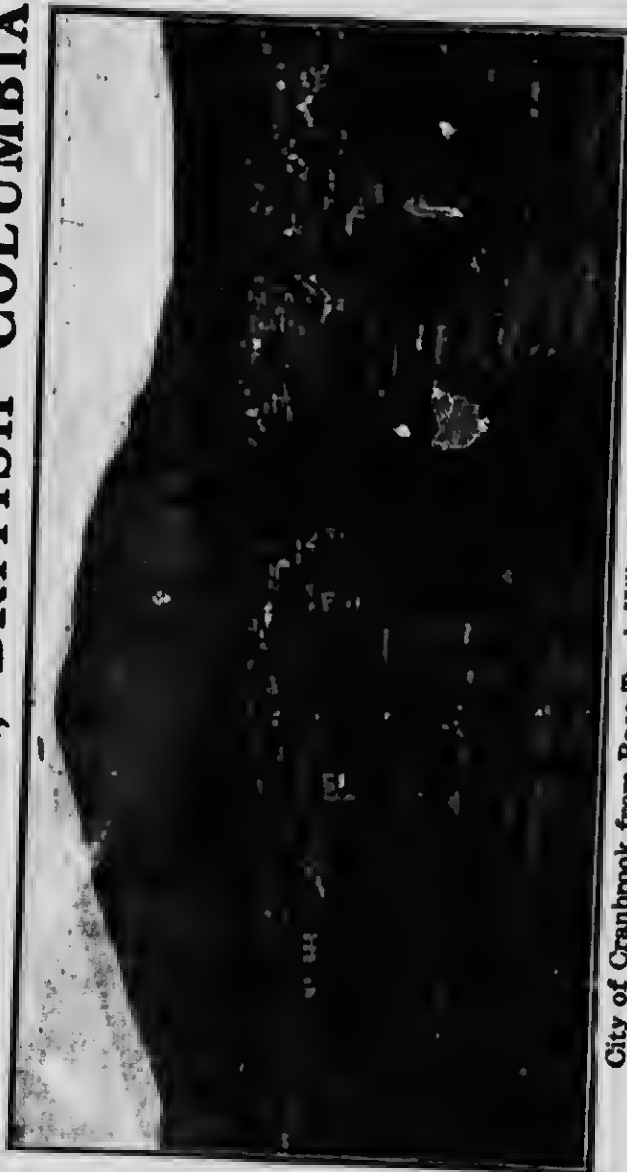
DUNCANS (Vancouver Island), on E. & N. Ry. Tel. C.P.R. 38 miles from Victoria. Hotels, Tzouhalem and Quamichan. 4 churches (Ang., Pres., R.C., Meth.), private school for girls and young boys (The Cliffs), private school for boys, high school, canning factory, egg collecting station, creamery, saw mills. An attractive residential district with fine bays within a few miles, and numerous lakes. Pop. 600.

SPECIAL OPPORTUNITIES.--Dairying, fruit farming, lumbering, mining. See under Agricultural and Fruit Lands Announcements, page 31, and illus. Advt. Write Clerk of Municipal Council, Duncans.

EBURNE, on B.C. Elec. Ry., 8 miles s. of Vancouver, on n. arm of Fraser River. Hourly car to Vancouver and Steveston. Telephone, temperance hotel, 2 churches (Pres., Meth.), school, bank, salmon canneries, 4 shingle mills, 2 saw mills, flour mill, abattoir.

ENDERBY, on Spallumcheen River in Okanagan Valley, 23 miles from Sicamous Junction on C.P.R. Hotels, King Edward, Enderby \$2. 4 churches, public school, high school, hospital, public library, flour mill, brick and tile factory, saw mill, cement brick and block works. Mixed farming, dairying, fruit growing. Tourist resort. Good fishing, small and big game. Alt. 1,165. Pop. 700.

CRANBROOK, BRITISH COLUMBIA



City of Cranbrook from Pace-Track Hill. Baker Mountain in the Distance
See Description of Town, page 41.

Our chief industries are fruit growing, mixed farming, stock raising, lumbering and mining. The district payroll is over \$1,000,000 a month. Land values are reasonable. The district is described on page 19. All further information willingly furnished by

THE SECRETARY, BOARD OF TRADE

CRANBROOK, B.C.

SPECIAL OPPORTUNITIES.—Lumbering, manufactures, dentist. See under Agricultural and Fruit Lands Announcements, page 24, and illus. Advt. Write Sec. Bd. Trade.

ESQUIMALT (Vancouver Island), on E. & N. Ry., 3 miles from Victoria. Dom. Ex. Tel. C.P.R. Harbour formerly reserved for Royal Navy, now thrown open to commerce. Fish canning. Pop. 950.

FERNIE, near Elk River, on C.P.R., G.N.R., Morissey, Fernie and Michel Ry. Dom. Ex. G.N. Ex. Tel. C.P.R., G.N. and W.U. Long Distance Telephone. Hotels, Fernie \$2.50 up, and 9 others. 5 churches, \$25,000 hospital, \$100,000 post office, Customs house, public and high schools, \$20,000 City Hall, \$15,000 fire hall, \$50,000 power station, \$10,000 rink, 4 banks, 15 saw mills (annual output 180 million ft.), brick plant, large brewery, railway car shops, foundry and machine shops, opera house, Philharmonic Society, baseball and football clubs, commercial and working men's clubs, isolation hospital, macaroni factory, American Consulate, 3 livery stables, automobile garage, 7 wholesale houses. Crow's Nest Pass Coal Co. emp'oy 2,000 men, (coal reserves, 8 billion tons; annual output 1,500,000 tons), 1,200 beehive coke ovens. Customs port of entry, judicial centre and Provincial Police Headquarters for East Kootenay. Outfitting point for hunters in East Kootenay game reserve. Big game abundant, good trout fishing. Power, 15,000 h.p. can be developed on Elk River Falls. City supplies electric light and power, owns 200 acre natural park. Sewage treated by septic process. Alt. 3,303. Pop. about 5,000.

SPECIAL OPPORTUNITIES.—Factories for cheap furniture, sashes and doors, shipping boxes for fruit, etc.; mattresses, overalls, heavy boots and shoes, wholesale houses. Trust and Loan Co., smelter and blast furnace, iron rolling mills, vegetable and fruit growing. Development of power on Elk River, 10 miles distant. See under Agricultural and Fruit Lands Announcements, page 20, and illus. Advt. Write Sec. Bd. Trade. □

FORT STEELE, a mining town on Kootenay River, at mouth of Wild Horse Creek, 12 miles from Cranbrook. Tel. C.P.R. Electric Light and Power Co., ranching and fruit growing in neighbourhood. Pop 500 in 1909.

GOLDEN, on Columbia River, on C.P.R., 168 miles w. of Calgary. Dom. Ex. Tel. C.P.R. Hotels, Columbia \$2, Queen's \$2, Kootenay \$2. Sash and door factory, 4 churches,

ENDERBY, BRITISH COLUMBIA

IN THE APPLE BELT . . . Gateway of the Famous Okanagan Valley



A Rancher's Home, showing character of bottom lands about Enderby.

The pivotal point for a fast developing district. See paragraph "Okanagan Valley—Enderby District" on page 24. A Home City with everything to interest the Manufacturer.

Read description of Enderby on page 43. All further information gladly furnished by the

SECRETARY, BOARD OF TRADE - ENDERBY, B. C.

public and high schools, 1 bank, Court House. In summer tri-weekly boat, in winter weekly stage to Windermere, 82 miles, and other points. Good fishing and big game within a few miles. The land in the Columbia valley is well adapted to raising fruits, grains, vegetables, etc. Lumber mills employ about 250 men. Alt. 2,580. Pop. 600.

SPECIAL OPPORTUNITIES.—Small steam laundry, iron foundry, box factory. Write Sec. Bd. Trade or Mgr. Imperial Bk.

GRAND FORKS, on Kettle River, 25 miles from Rossland on C.P.R., G.N.R. and Kettle Valley Ry. Dom. Ex. Tel. C.P.R. Long distance telephone. Hotels, Yale \$2.50, \$3.00, Winnipeg \$1.50, Alberta \$2.50. 4 churches, electric light plant, telephone, Granby Smelter producing blister copper and large values in gold and silver. Boundary Iron Works, B.C. Steel Works, Riverside Nurseries, 2 banks, 2 newspapers, livery stable, foundry and machine shop, cement block works, saw mill, 2 breweries, opera house, waterworks and electric light. A customs port and Ry. divisional point. Surrounding country well adapted to fruit farming. Alt. 1,746. Pop. 2,850.

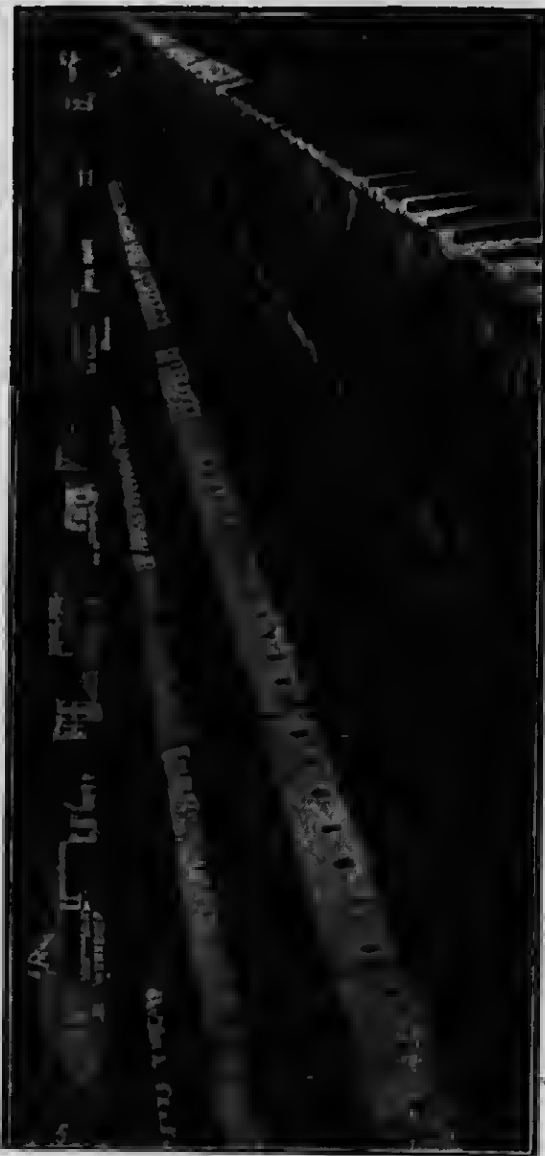
SPECIAL OPPORTUNITIES.—Manufacturers needing cheap electric power to supply local market provided by smelting, mining, lumbering and fruit industries. 1st mortgage loans on building, real estate and tracts of land for orchard planting. Building good, medium-sized dwellings. Men with \$500 to \$2,000 will do well in small tracts for agriculture, gardening or orchard purposes. Labour—good men for smelting and lumbering; saw mill, creamery, laundry. Write Sec. Bd. Trade.

GREENWOOD, on C.P.R. Dom. Ex. Tel. C.P.R. Hotels, Windsor, Pacific, National, Norden. 5 churches (Ang., R.C., Bap., Pres., Meth.), city waterworks, 2 weekly papers, private hospital, electric light plant, telephone, 3 banks, 2 newspapers, 2 livery stables, B.C. Copper Co. smelter. Alt. 2,464. Pop. 1,500.

SPECIAL OPPORTUNITIES.—Machine men, smelter men, miners, labourers, servant girls, fruit farmers, laundry. Write Sec. Bd. Trade.

HAMMOND, on n. side Fraser River, 24 miles e. of Vancouver, on C.P.R., in Maple Ridge district, famous for fruit growing. Daily steamer to New Westminster, 16 miles. 2 churches (Ang. and Meth.), hotel, bank, 2 lumber mills livery stable and store. Pop. 400.

FERNIE, B. C. The Future Pittsburg of Canada



Coal Ovens at Fernie

1,500,000 tons of Coal are mined here annually. Annual output of Coke 300,000 tons. Monthly payroll \$280,000.00. 180,000,000 feet of Lumber cut every year. HEART OF THE BEST COAL MINING DISTRICT IN CANADA.

Read carefully description of Fernie on page 45, and of Fernie District on page 20, and WRITE FOR FURTHER INFORMATION TO

The Secretary, Board of Trade - - Fernie, B. C.

SPECIAL OPPORTUNITIES.—Brick yard, box factory; saw mills, creamery, canning factory, commission house, cobbler, bakery, drug store, tinsmith, grain elevators. Write Agent C.P.R.

HOSMER, on Crow's Nest Pass Division of C.P.R., 8 miles e. of Fernie. Dom. Ex. Tel. C.P.R. Hotel, 3 churches (Ang., Pres., Meth.), public school, bank, telephone, lumber yard, 2 lumber mills, livery stable, stores. The Hosmer Mines, Ltd., employ 600 men and operate 240 coke ovens, monthly payroll \$50,000. This Co. supplies water and electric light. Pop. 1,200.

KAMLOOPS, on C.P.R. Tel. C.P.R. Dom. Ex. 250 miles from Vancouver, at junction of the N. and S. branches of the Thompson River, both navigable for some distance. Hotels, Leland, Dominion, Grand Pacific, Queen's, Colonial and Kamloops House. Brewery, cigars, saw mills, sash and door factory, gun repairing establishment, machine shop, fruit cannery, laundry, 3 banks, high school, public school, and 2 private academies, good water and light system, up-to-date sewerage system and volunteer fire brigade. Customs port, Dominion land office. County seat of judicial district. Divisional station of C.P.R., centre of supply for large mining and grazing district, situate in the famous dry belt. Kamloops will be the divisional station on the main line of the C.N.R., also divisional station for the branch line of G.T.P. Ry. Both of these railways are now surveying through the N. Thompson Valley for their south outlet from the Yellow Head Pass. Delightful climate makes this an ideal place for residence. Alt. 1,160. Pop., rapidly increasing, now about 4,500.

SPECIAL OPPORTUNITIES.—Implement factories, flour mill, malt house, foundry, smelter, abattoir and packing house. Tourist hotel on a large scale. Good opening for investment in real estate, farm land, stock raising and mining, and mixed farming. See under Agricultural and Fruit Lands Announcements, page 21, and illus. Advt. For further information and illustrated pamphlet, write Sec. B.C. Inland Bd. of Trade, Kamloops, B.C.

KASLO, at mouth of Kaslo River, on west shore of Kootenay Lake, 45 miles from Nelson, on C.P.R. Terminus of Kaslo and Slocan Ry. to Sandon, 28 miles, and Cody, 30 miles. Daily steamer to Nelson 45 miles, connecting with G.N.R. at Troop Junction. Dom. Ex. Tel. C.P.R. Electric light, telephone, lumber yard, newspaper, livery stable, zinc plant, a large water power. Neighbourhood

KAMLOOPS, B.C.

WILL BE A DIVISIONAL POINT
OF THREE RAILWAYS



A General View of Kamloops.

An important railway and commercial centre in the dry belt, renowned for its fertility. A perfect climate. A description of Kamloops is on page 49, and information about the district on page 21. Write for free illustrated booklet to

JOHN F. SMITH, Sec. B.C. Inland Board of Trade, Kamloops, B.C.

supplies zinc, lead, copper, cedar. Fruit from this district obtained highest award at Royal Horticultural Society Exhibition in London, 1905. Alt. 1,752. Pop. about 1,000.

SPECIAL OPPORTUNITIES.—Saw mill, shoemaker, lawyer, fruit growing. Write the Mayor.

KELOWNA, in the famous Okanagan Valley, on Lake Okanagan, 80 miles s. of Sicamous Junction, on the main line of C.P.R. Daily C.P.R. steamer from Ry. at Okanagan Landing, 28 miles. Dom. Ex. Tel. C.P.R. Government long distance telephone to all parts of Okanagan. Hotels, Lakeview \$1.50 to \$2.50, Palace Royal \$1.00 to \$2.00. High, public and private schools. Clubs: Kelowna, Ladies' Country, Aquatic, Polo and organized athletic associations of all descriptions. Municipal electric light and water service, telephone, cement block plant, brick yard, 2 saw mills, 4 fruit packing houses, 2 jam and fruit canning factories, aerated water factory, 2 livery stables, cigar factory supplied by locally-grown leaf, 2 banks, 5 churches, 2 motor garages, general hospital, exhibition building and race track, municipal park with mile of lake frontage, surrounded by orchards, vegetable gardens and tobacco plantations. Very mild climate. For particulars of tobacco industry, see under "Agriculture." Pop. 1,800. Pop. of district, including town, 5,000.

SPECIAL OPPORTUNITIES.—Fruit evaporating, industries allied to fruit culture, fruit growing, tobacco planting, poultry farming, box factory, steam laundry, first-class tourist hotel. See under Agricultural and Fruit Lands Announcements, page 24, and illus. Advt. For free illustrated pamphlet and all further information, write Sec. Bd. Trade.

LADNER, on G.N.R., steamers from New Westminster, 12 miles, and Steveston 8 miles, connecting with B.C. Elec. Ry. to Vancouver. Hotels, Delta, Ladner, \$2.50. 1 bank, 6 schools, 4 churches, saw mill, creamery, fish canneries. A fine farming district. Pop. 1,000. Write Mgr. Royal Bk.

LADYSMITH (Vancouver Island), on Oyster Harbour, east coast of Island on Esquimalt and Nanaimo Ry., 18 miles from Nanaimo. C.P.R. ferries freight trains here from Vancouver, where they are transferred to the E. & N.R. Dom. Ex. Tel. C.P.R. 4 churches (Ang., R.C., Pres. and Meth.), 2 public and 1 R.C. schools, 2 banks, smelter of Tyee Copper Co., stove works, brewery, shingle

KELOWNA, B.C. THE HEART OF THE OKANAGAN



Kelowna, on Lake Okanagan

The Premier Fruit-Growing District of British Columbia
 Read the paragraph headed "Okanagan Valley—Kelowna District," page 24, and description of Kelowna, page 51, and write for free illustrated literature to the
Secretary, BOARD OF TRADE - KELOWNA, BRITISH COLUMBIA

mill, boat building, the Extension Coal Mines near-by. Pop. 3,600.

SPECIAL OPPORTUNITIES.—Saw mill, pottery, fruit growing, coal shipping, and timber. Write Sec. Bd. Trade.

LILLOOET, a mining camp on s. side Fraser River railway station at Lytton, 47 miles, and Ashcroft, 62 miles. Tel. C.P.R. Public school, 3 churches (R.C., Ang. and Meth.), weekly paper, semi weekly mail. Hunting centre for big game. Gold mining in vicinity. Pop. of dist. 500.

MICHEL. See New Michel.

MERRITT, in Nicola Valley, at confluence of Nicola and Coldwater Rivers. On Nicola branch of C.P.R., 7 miles from Nicola. Long distance telephone daily mails. Nicola Valley Coal and Coke Co. employs 350 men; Pacific Coast Collieries employ a number of men. 3 important railways converge here. 2 hotels, public school, bank, 2 churches (Pres. and Meth.), brewery, livery stables, headquarters for construction w. end Kettle Valley Ry. See Nicola Valley, under Agricultural Lands Announcements.

SPECIAL OPPORTUNITIES.—Cement and brick yards, lumber mills, creamery, boarding house, hotel, dentist. Write Sec. Bd. Trade.

MOYIE, on Moyie Lake (9 miles long), and Crow's Nest & B.C. Southern Ry., 20 miles west of Cranbrook. Hotels, Kootenay \$2, and 4 others. 3 churches, 13 stores. The St. Eugene Mining Co., the largest silver lead mine in Canada; Aurora Mining Co., Society Mining Co., Cambrian Mining Co., monthly payroll about \$50,000. Good trout fishing. Alt. 3,040. Pop. about 1,200.

NAKUSP, on the Upper Arrow Lakes, between Nelson and Revelstoke, 75 miles. 4 churches, bank, Dom. Ex. Tel. C.P.R. Hotels, Leland, Grand. Telephone. 2 general stores, saw mill, waterworks, C.P.R. ship yards, telegraph pole yards. Extensive zinc ledge, natural hot springs within 9 miles. Commercial centre of very large fruit-growing district. Pop. of locality 700.

SPECIAL OPPORTUNITIES.—Saw mills (unlimited timber), box factory, sash and door factory, brick plant, newspaper, shoemaker, druggist, livery. See under Agricultural and Fruit Lands Announcements, page 17, and illus. Advt. Write Sec. Bd. Trade.

NANAIMO, on e. coast of Vancouver Island, on E. & N.R., daily steamers from Victoria, 73 miles, and Vancouver 33 miles; B.C. Ex. Hotels Wilson, Windsor \$2.50 up.

NAKUSP, B.C. ON THE BEAUTIFUL ARROW LAKES



Nakusp

The Commercial Centre of the Largest Area of Fruit Lands in British Columbia
Wonderful Scenery - Mild Climate - Fishing, Hunting, Boating, Bathing.
See description of Town and District on pages 53 and 17, and write the
Secretary, BOARD OF TRADE - - NAKUSP, BRITISH COLUMBIA

3 banks, 6 churches (Ang., R.C., Pres., Bapt., Meth. and Finnish), high school, 5 public schools, R.C. convent, 2 saw mills, shingle mills, sash and door factory, fishing and curing establishments, brewery, aerated water works, foundry and machine shop, telephone, electric light, power and heating co., gas plant, waterworks, fire dept., sewerage system, court house, customs house, 2 newspapers, several coal mines. The Western Fuel Co. have monthly payroll over \$110,000. The Pacific Coast Coal Mines, Ltd., Vancouver and Nanaimo Coal Co., 2 lumber cos., Hamilton Powder Co. A fine harbour. Chief town of extensive farming and fruit district. In 1909 52,000,000 lbs. of salted herring were packed for export to the Orient. Output of 3 coal mines in 1909 nearly 600,000 gross tons. Copper and brick clay in neighbourhood. Pop. 9,000.

SPECIAL OPPORTUNITIES.—Herring and whale fishing, coal mining, jam factory, ship building, steel works, implement factory, wholesale warehouses, tannery, woollen mills, automobile factory. See under Agricultural and Fruit Lands Announcements, page 32, and illus. Advt. Write Sec. Citizens' League.

NARAMATA, in the Okanagan Valley, on Okanagan Lake, ferry to Summerland, directly opposite, 3 miles. Tourist hotel, opera house, school, church, saw mill, boat factory, good fishing. A fruit colony founded by J. M. Robinson, late of Brandon.

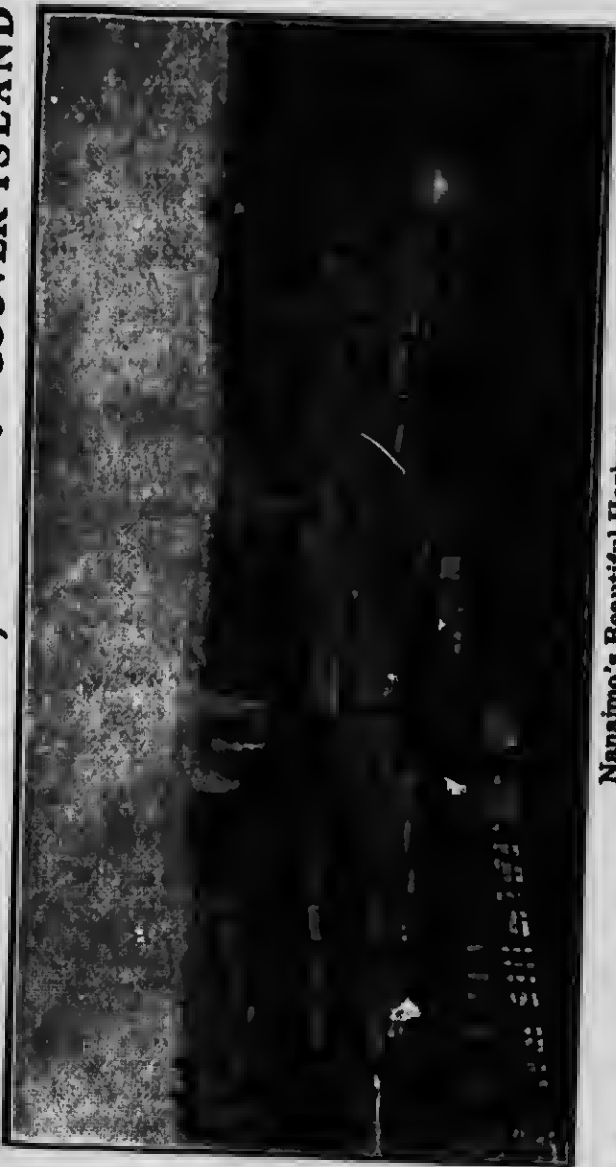
SPECIAL OPPORTUNITIES.—Fruit growing. Write J. M. Robinson, Summerland.

NELSON, on west arm of Kootenay Lake, on C.P.R.; Spokane Northern Ry. Dom. Ex. and G. Nor. Ex. Tel. C.P.R. Steamers to Kaslo and other points up stream and to Kootenay Landing. Hotels, Strathcona \$3, Hume House, Queen's \$2. Electric cars, electric light, high and public schools, 4 banks, daily and weekly paper, sash and door factory, brick plant, cement block plant, box factory, 4 livery stables, large smelter, foundry, machine shop, flour mill, 2 saw mills, tannery, cigar factory, fruit packing house. Judicial city of Kootenay, centre of fruit-growing industry, and an important wholesale business point. Climate equable and salubrious. Good shooting and fishing in neighbourhood, which supplies timber, iron, marble, silver, gold, lead and other minerals. Output of minerals in 1910 about \$7,000,000. Alt. 1,769. Pop. 7,000.

SPECIAL OPPORTUNITIES.—Wholesale distributing houses, mining, lumbering, saw mills, fruit farming.

NANAIMO, B.C.

THE HUB OF VAN-
COUVER ISLAND



Nanaimo's Beautiful Harbour.

Surrounded by rich fruit and farming land. Read the paragraph "Vancouver Island—Nanaimo District," on page 32. A growing manufacturing centre. See description on page 62. Illustrated pamphlet free from

H. R. Hickling, Secretary Citizens' League, Nanaimo, B.C.

mixed farming, and another box factory, broom factory. Hydro-electric power plant, with capacity 6,500 h.p., has 1,250 h.p. developed; cost in small lots about \$35 per h.p. per annum, special reduced rates over 50 h.p. See under Agricultural and Fruit Lands Announcements, page 21, and illus. Advt. Write Sec. Bd. Trade.

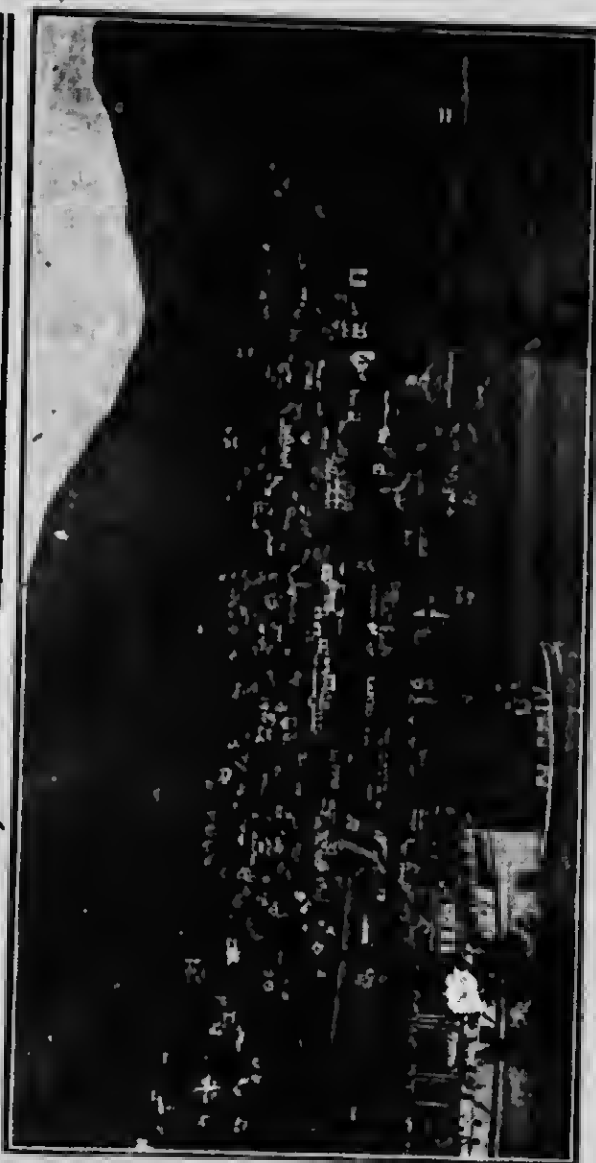
NEW MICHEL, Immediately adjoining town of Michel, on Crow's Nest Div. C.P.R. and G.N.R. branch from Fernie, 22 miles. Good gravity water system. Dom. Ex. Tel. C.P.R. Hotels, Northern, Kootenay, 1 bank, brewery, aerated water factory, newspaper. Pop. of both towns about 4,000.

NEW WESTMINSTER, on Fraser River, 13 miles from Pacific Ocean, on G.N.R., C.P.R., C.N.R. (transcontinental line), B.C. Electric Ry., running 75 miles inland to Chilliwack. Steamers to Mexico, and to all parts of the world. Dom. Ex. Tel. C.P.R. A splendid harbour, being only fresh water port of Western Canada, 10 miles from salt water, with good wharfage sites with from 30 to 40 ft. of water on both sides of the river to the Gulf of Georgia. All railway lines parallel the harbour front. Hotels, Russell, Windsor, and several others. Electric light, water system, free library, exhibition bldg., pub. schools, 2 cathedrals, 20 churches, 2 daily papers, hospital, armoury, 2 theatres, several parks, Government bldg., Columbian College, St. Louis College, high school, R.C. seminary, orphanage, etc. Industries include fisheries, lumbering, fruit growing, dairying, salmon canneries, mining, Fraser lumber mills (largest in the world), condensed milk factory, gasoline engine works, oatmeal mill, wire factory, paper mills, boiler works, sash and door factory, shingle mills, ship yards, 4 large saw mills, 39 fish canneries, 4 iron works, machine shops, railway car bldg. works, cold storage plant, can factory, cigar factory, tannery, creamery, brewery, distillery, wood pipe factory. Pop. 15,000.

SPECIAL OPPORTUNITIES.—Good openings in many lines. New industries are locating rapidly. Pop. of tributary district 60,000 to 75,000. Electric and water power opening. See under Agricultural and Fruit Lands Announcements, page 22, and illus. Advt. Write Chas. H. Stuart Wade, Publicity Commissioner.

NICOLA, in Nicola Valley, on Nicola Lake. Terminus of Nicola-Spence's Bridge Railway. 50 miles from Kam-

NELSON, B.C. The Capital of the Kootenays



Nelson, B.C.

Centre of the fruit growing, mining and lumbering interests of Southern British Columbia. At the Royal Horticultural Society's Exhibition in London, Eng., Kootenay fruit has obtained **FIRST PRIZES** in competition with the world. Read the descriptions of Nelson and Nelson District on pages 55 and 21, and write to

THE SECRETARY, BOARD OF TRADE - NELSON, B.C.

loops. Stage to Aspen Grove, Tulameen, Granite and Princeton, 72 miles. Water power. 3 churches (Ang., Pres. and Meth.), pub. school, bank, long distance telephone, daily mails. Hotel, livery stables, Prov. Gov. Offices and Court House. A lovely climate and attractive scenery should make this a popular summer and health resort. Good trout fishing.

SPECIAL OPPORTUNITIES.—Boarding house, dairy farming, poultry, stock raising. See under Agricultural and Fruit Lands Announcements, page 23, and illus. Adv't. Write for illus. pamphlet to Sec. Nicola Valley Board of Trade, Nicola.

NORTH VANCOUVER, on n. shore of Burrard Inlet, opposite Vancouver, 2½ miles, connected by half-hourly ferry. On B.C. Elec. Ry. Dom. Ex. Tel. C.P.R. B.C. Telephone Co. Hotels, Palace \$2, and North Vancouver. 4 churches (Ang., Pres., Bapt., Meth.). High and public schools, 2 hospitals, waterworks, Electric Light and Tramway Co., shipbuilding co., 2 sash and door factories, iron works, 4 lumber cos., powder works, granite quarries, 2 canneries. Delightful residential suburb of Vancouver. Capilano Canyon 6 miles distant. Lynn Canyon and Seymour Canyon afford scenic attractions. There are 20 miles of water front available for shipping and industrial purposes. The single-tax principle has been adopted. Pop. about 5,500, rapidly increasing.

SPECIAL OPPORTUNITIES.—Industries of all kinds, wharves and warehouses on harbour front. No taxes on improvements. There are several streams of pure water suitable for industries. Inter-municipal bridge and tunnel soon to be built will give Ry. connection with s. shore. Write Sec. Bd. Trade.

PEACHLAND, in Okanagan Valley, on Okanagan Lake, daily C.P.R. steamer from Okanagan Landing, 40 miles. Dom. Ex. Tel. C.P.R. Temperance Hotel. Telephone, electric light, domestic water, 4 churches, high and public schools, free library, aquatic club, fruit cannery, box factory, saw mill, cement pipe factory, 4 stores. An irrigated fruit-growing district, peach culture predominating. Pop. of dist. 700.

SPECIAL OPPORTUNITIES.—Fruit growing, 1st class tourist hotel, practically unlimited h.p. for mercantile purposes, of which 150 h.p. developed, cost in small lots \$35 per h.p. per annum. Poultry farming. See under Agricultural and Fruit Lands Announcements, page 25, and illus. Adv't. Write Sec. Bd. Trade.

NEW WESTMINSTER, B.C. THE LIVERPOOL OF THE PACIFIC COAST



The Exporter, has Deep Water at his Wharf

The shipowner has here the only fresh water Pacific port. 3 Transcontinental Railway Systems. New Westminster is the commercial centre of 4,900,000 acres of rich dairying and agricultural land. See pages 22 and 57. Free illustrated literature from

C. H. Stuart Wade, Publicity Commissioner, New Westminster, B.C.

PENTICTON, at southern extremity of Okanagan Lake. Steamer connection with C.P.R. at Okanagan Landing. 76 miles. Dom. Ex. Tel. C.P.R. Long distance and local telephone. 2 hotels, 3 banks, 2 lumber yards, saw mill, newspaper, 3 livery stables, 4 churches, good schools. Alt. 1,100 ft. Pop. 1,000.

SPECIAL OPPORTUNITIES.—Brickmaking, lumbering, fruit growing, cannery, wood pipe factory, 1st class tourist hotel. See under Agricultural and Fruit Lands Announcements, page 26, and illus. Advt. Write Sec. Bd. Trade.

PHOENIX, a mining camp in Boundary Dist., 30 miles w. of Rossland, on C.P.R. br. from Eholt Jct., 9 miles, and G.N.R. br. from Grand Forks, 20 miles. Stage to Greenwood, 5 miles. Dom. Ex. Tel. C.P.R. Granby C.M.S. and P. Co., Snowshoe Mining Co., and New Dominion Copper Co., all mining low grade copper, 1 bank. Town destroyed by forest fire 15 Aug., 1910; rebuilding rapidly.

FORT ALBERNI (including town of Alberni) at head of Alberni Canal from w. coast of Vancouver Island. A natural, deep, land-locked harbour. Terminus of E. & N. Ry. Co., owned and operated by the C.P.R., to be completed with the through transcontinental trains by Aug., 1911. Weekly steamboat service to Victoria. Automobile and stage to Nanaimo, 58 m. Tel. C.P.R. 4 churches, 4 schools, 5 hotels, 3 saw mills, 4 large mills to be erected shortly. Outlet and base of supplies for a big district rich in timber, coal, mineral, agricultural and fruit lands and deep sea fisheries. Pop. 600. Will rise rapidly on completion of railway. N.B.—The C.N. Ry. have announced their intention of building at once to Port Alberni.

SPECIAL OPPORTUNITIES.—Logging, saw mills, mixed farming, fruit raising, timber lands, mining, poultry, beekeeping, flour mills, saw mills, woollen mills, rope and fibre plant, pulp mills. See under Agricultural and Fruit Lands Announcements, page 30, and illus. Advt. Write Carmichael & Moorhead, Ltd.

PORT MOODY, at head of Burrard Inlet, on C.P.R. main line, 12 miles from Vancouver. Dom. Ex. Tel. C.P.R. Telephone. Hotels, Tourist, Strand, \$2. 2 churches (Ang., Pres.), \$6,000 school, 1 bank, 3 saw mills, shingle mill, B.C. Oil Refining Co., brick plant. Pop. 1,200.

SPECIAL OPPORTUNITIES.—Sash and door factory, tinsmith, baker, druggist, 5 miles of water front on Bur-

Nicola Valley, British Columbia



Far-famed Nicola Valley Beef loading at Nicola Station for the Coast Markets.
No District in British Columbia offers better opportunities for the farmer or the investor at the present time than the Nicola Valley. Read the description of Nicola on page 57 and the paragraph headed "Nicola Valley" on page 28. Write for free illustrated pamphlet to
SECRETARY, NICOLA VALLEY BOARD OF TRADE, NICOLA, B.C.

rard Inlet with C.P.R. tracks. Prices from \$100 to \$200 per foot front. Write Mgr. Royal Bk.

PORT SIMPSON, situated 700 miles n.w. of Vancouver, 25 miles n.w. of Prince Rupert and 12 miles s.e. of Alaska. Extensive safe harbour with direct approach from ocean and nearest shipping point between B.C. and Orient. Telegraph station. Semi-weekly steamers, including ten regular mails monthly. Climatic conditions good, temperature ranging from 12 minimum occasionally during mid-winter to 68 maximum in summer. Local and neighbouring industries, salmon canning and curing, halibut and herring fishing, mining, lumbering and shipping. Principal buildings—Hudson's Bay Company's premises, including commodious wharf accommodation, Methodist church and parsonage and missionary institutions, comprising separate home-schools for Indian boys and girls, Episcopal church and rectory, public school, general hospital. Provincial Government premises, and a number of private dwellings. Population, 100 whites, 900 Indians.

PRINCETON, on forks of Similkameen and Tulameen Rivers. Direct route to Spokane, Wash., 300 miles, and Boundary Dist., 150 miles. Present terminus of the G.N.R. at present building west to Vancouver, 150 miles. With completion of through line expected in 1911, direct route to Coast cities will be established. Ex. and Tel. G.N. Hotels, Great Northern, Tulameen, Similkameen \$2.50 per day. Dom. Govt. telephone and Prov. Govt. bldgs. 2 banks, 1 newspaper, postoffice, pub. school, 2 churches (Ang. and Pres.), 2 coal mines, cement factory, brick yard, gold, silver and copper mines in vicinity. Alt. 1,885. Pop. about 400.

SPECIAL OPPORTUNITIES.—Capital to develop mineral resources, coking coal, cheap fuel, development of power, river fall of 35 ft. to mile. Smelter, good sites obtainable. Distributing point. Write Sec. Bd. of Trade.

PRINCE RUPERT, terminus of the G.T.P. on Pacific Coast, 550 miles n.w. of Vancouver. G.T.P. Ry. operated 100 miles east. The G.T.P. S.S. Co., C.P.N. Co., Union S.S. Co., Boskowitz S.S. Co., from Seattle and American ports. Dom. Ex. Dom. Govt. Tel. Hotels, Prince Rupert Inn, Am. plan, \$2.50 to \$4 per day, Annex, Eur. plan, \$1.00 to \$2, Premier, Am. plan, \$2.50, Talbot, Eur. plan, \$1, Knox, Am. plan, \$2, Royal, Eur. plan, and several others. Prov. Govt. bldgs. for Skeena Dist. 5 banks, 6 churches, school, cold storage plant, saw mills,

PEACHLAND, B.C. IN THE OKANAGAN VALLEY PEACH BELT



The Prettiest Town on Lake Okanagan

Profitable fruit growing, cheap orchards, temperate climate, good fishing and hunting, irrigation and domestic water, electric light, telephone, school, bank, churches, etc.
ELECTRIC POWER FOR MANUFACTURING

See description of Town and District on pages 25 and 59. Write to

Sec.-Treasurer Municipality - PEACHLAND, BRITISH COLUMBIA

sash and door factory, wholesale and retail establishments, etc. Over 3,000 ft. wharfage. City Council elected May 19, 1910; first town lot sold May, 1909. Climate mild all year round. An excellent harbour. Pop. in 1910, 6,500.

SPECIAL OPPORTUNITIES.—Mining, quarrying, building, deep sea and salmon fishing, coal, timber, marble, clay, etc. Fruit lands just inside coast range. Richest halibut banks in the world within 5 hours. Write Sec. Bd. Trade.

REVELSTOKE, on Columbia River, 379 m. from Vancouver, on C.P.R., divisional point. Dom. Ex. Tel. C.P.R. Hotels, Revelstoke, Victoria, Union, Central, Climax, King Edward, Oriental City. 6 churches, railway repair shops, 2 sash and door factories, saw mills, 2 cigar factories, 2 livery stables, 2 breweries, 2 newspapers, steam laundry, sewerage, boulevards, sidewalks, hospital, Y.M.C.A., parks (mountain and city). Seat of County Court for W. Kootenay. Considerable supply trade done with mining districts of Columbia and Kootenay. Tourist centre for fishing and big game. Neighbourhood supplies minerals, lumber, pulpwood, brick clay, power (water and electricity, 900 h.p. developed). Alt. 1,503. Pop. 4,000.

SPECIAL OPPORTUNITIES.—Machine shop, fruit growing, mining, lumber mills, tannery, commercial college, electric power, 1,400 h.p. developed; low rates to factories. See under Agricultural and Fruit Lands Announcements, page 28, and illus. Advt. Write Sec. Bd. Trade.

ROSSLAND, on C.P.R. Columbia and Western branch, G.N.R. Red Mt. branch. Dom. and G.N. Ex. and Tel. Hotels, Allan \$2.50, and 6 others. 5 churches, 2 schools, 3 banks, newspaper, 2 livery stables, saw mills, flour mill, bottling works, power and electric light company. Centre of mining district of W. Kootenay. Among chief gold mines are War Eagle, Le Roi, Le Roi No. 2. Silver, lead and free gold are also found. Alt. 3,461. Pop. 4,000.

SPECIAL OPPORTUNITIES.—Gold, silver and copper mining, small fruits, lumbering. Write Sec. Bd. Trade.

SALMON ARM, on southern arm of Shuswap Lake, on C.P.R. main line, 316 miles e. of Vancouver. Steamboat connection to Kamloops and other lake points. Dom. Ex. Tel. C.P.R. Hotels, Montebello \$2.50. Coronation \$1.50 up, Alexandra \$1.50 up. 1 bank, public and high schools, 5 churches, 3 lumber mills, sash and door factory, creamery, Government salmon and trout hatchery. Centre of fruit growing, dairying and mixed farming dis-

PENTICTON, B. C. In the famous Okanagan Valley



Three-Year-Old Peach and Apple Orchard.

THE CENTRE OF THE PEACH BELT. A description of Penticton, with special opportunities offering, is given on page 61. The district surrounding Penticton, one of the finest areas in Canada, is described on page 26, under heading "Okanagan Valley—Penticton District."

Before you decide on a home, write the

Secretary, Board of Trade, Penticton, British Columbia, Canada

trict. No irrigation required. Second prize and silver medal for fruit and district exhibit at New Westminster, 1910. Assessment about \$800,000. Pop. of district 2,500.

SPECIAL OPPORTUNITIES.—Fruit and vegetable canneries, dairying and mixed farming, contracts for new land clearing. Good steam laundry, bakery, electric light, waterworks, lawyer, dressmaker, tailor, brick yard. See under Agricultural and Fruit Lands Announcements, page 28, and illus. Advt. For illustrated pamphlet and all further information, write Sec. Bd. Trade.

SLOCAN, mining town on Slocan Lake, in W. Kootenay Dist., on C.P.R., 44 miles n.w. of Nelson. Hotels, Arlington \$2.50, Royal \$2.00, and 2 others. Electric light plant, telephone, livery stable, waterworks. Principal mining town of zinc and silver lead district. Alt. 1,777. Pop. about 500.

STEVESTON, on Lulu Island, at mouth of Fraser River, B.C. Elec. Ry. n. to Vancouver, 15 m., and New Westminster, 16 m. Steamer to Victoria. Hotels, Sockeye, London, Commercial, Richmond, Star. 3 churches (Ang., R.C., Meth.). 1 school, 1 bank, 15 salmon canneries. Pop. about 500.

SPECIAL OPPORTUNITIES.—Small farms, saw mill, factories, etc. Deep fresh water frontage. Write Mgr. Northern Crown Bk.

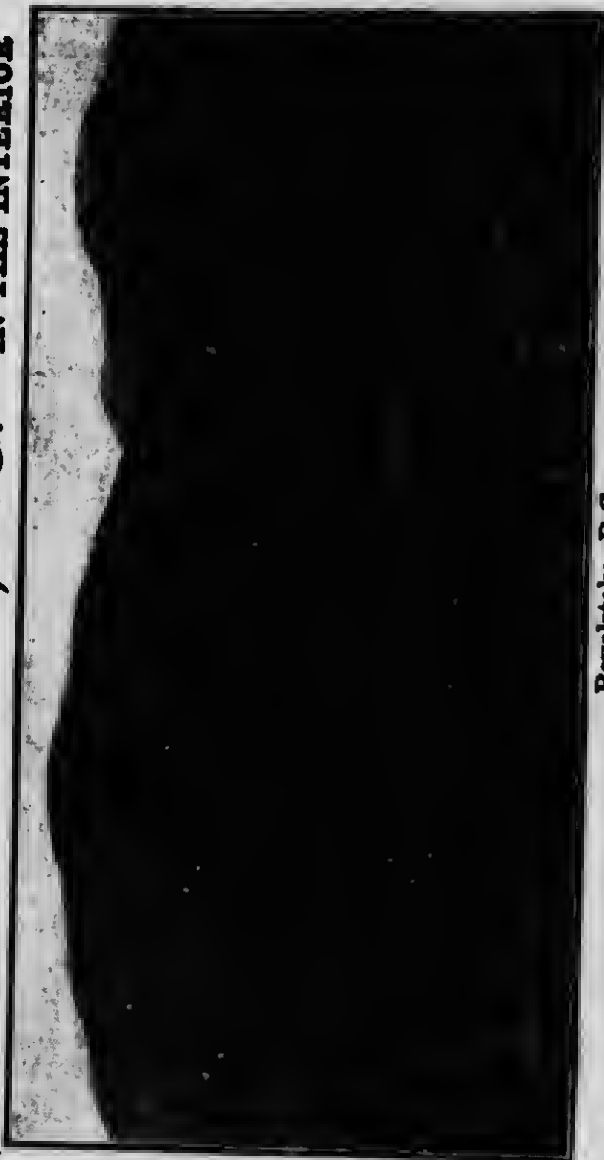
STEWART, a gold mining and distributing camp at head of Portland Canal. Steamers s. to Prince Rupert, 120 miles, and Pt. Simpson. Principal mining cos.: Portland Canal Mining and Devel. Co., Red Cliff Mining Co., Stewart Mining and Devel. Co.

SPECIAL OPPORTUNITIES.—Gold mining. Write Sec. Bureau Provincial Information, Victoria, B.C.

SUMMERLAND, on C.P.R., on Okanagan Lake, daily boat from Okanagan Landing, 55 miles. Hotel, bank, telephone, electric light, newspaper, livery stable, fruit exchange, canning factory. Centre of peach belt. A large fruit producing centre. Mixed farming and cattle raising can be carried on to advantage a few miles back. Front land too valuable for these pursuits. Okanagan college. See under Agricultural and Fruit Lands Announcements, page 26, and illus. Advt. Pop. 1,800.

SPECIAL OPPORTUNITIES.—Cement plant to meet demand for irrigation piping and fence posts. Fruit growing. Proved returns show 10 acres under fruit surpasses 160 acres under grain on the prairies. Poultry farming. Write for pamphlet to Sec. Bd. of Trade.

REVELSTOKE, B.C. THE LARGEST TOWN IN THE INTERIOR



Revelstoke, B.C.

On main line C.P.R. Unique advantages as a manufacturing and wholesale centre. Municipally owned hydro-electric plant, developing 1,400 h.p. Low rates to manufacturers. See description of town, page 66. Fruit growing advancing rapidly. See description Revelstoke District, page 28.

WRITE SECRETARY, BOARD OF TRADE - - REVELSTOKE, B.C.

TRAIL, on Columbia River, on Can. Pac. Ry., 7 miles from Rossland. Hotels, Crown Point \$3, Arlington \$2, and 6 others. Dom. Ex. Tel. C.P.R. Bank, telephone, lumber yard, livery stable, saw mill, newspaper. Consolidated Mining & Smelting Co., Ltd., employ over 600 men, treats silver, lead, copper ores, manufactures sheet lead, lead pipe and refines silver direct from ore. Supply trade done with surrounding mining companies. Alt. 1,364. Pop. 1,700. Write Sec. Bd. Trade.

VANCOUVER, on Burrard Inlet, incorporated 1886. Terminus of C.P.R. and G.N. Ry., B.C. Electric Co. runs to Steveston, New Westminster, extending to Chilliwack. Mail steamers to Japan, China, Australia and New Zealand. Steamers 3 times daily to and from Victoria and twice to Seattle. Regular communication bi-weekly with Prince Rupert. Daily steamers to Nanaimo and coast points and to San Francisco every 5 days. 2 S.S. lines to Mexico. Monthly steamers to and from England via Suez Canal, and communication with Atlantic steamers via Tehuantepec route. Industries include lumber and shingles, salmon and halibut, flour milling, foundries and structural steel work, sugar refinery, shipbuilding, etc. Clearing house returns 1909-10, \$327,835,557, being fourth place in Canada. Assessment value of property, 1910, \$76,927,720; of improvements, \$29,644,755. Customs revenue, 1909-10, \$3,908,233; shipping, 1909-10, 16,169 vessels of 6,456,838 tons register. Pop. 120,000.

SPECIAL OPPORTUNITIES.—Truck farming, poultry raising (three-quarters of these products now being imported), deep sea fishing, fruit farming, iron industries, flour mills. Vancouver expects a large portion of export grain trade from Alberta and Saskatchewan. See illustration, page 4. Write Sec. Bd. Trade.

VERNON, centre of famous Okanagan Valley, near Okanagan Lake, on C.P.R. (S. & O. branch), 46 miles from Sicamous Junction. Daily steamboats to southern points. Dom. Ex. Tel. C.P.R. Hotels, Royal, Kallamalka \$2.50, Coldstream \$1 to \$2, Vernon, Victoria. 2 newspapers, 4 livery stables, flour mill, creamery, 2 banks, court house, library, electric light, 2 saw mills, sewerage and water systems. Centre and supply depot for Okanagan district. An Assize town. Lord Aberdeen owns farm of 13,000 acres here. The Provincial Government have established a demonstration fruit farm here. Alt. 1,255. Pop. 3,000.

SALMON ARM, B. C.

MAIN LINE CANADIAN PACIFIC RAILWAY



4-year-old Wagener Apple Tree

Lands that grow Red Apples, Pears, Peaches, Grapes, Timothy,
Clover, Wheat, Oats and Barley

See pages 45 and 28 for concise description of town and district.
Illustrated descriptive literature will be sent free upon request by

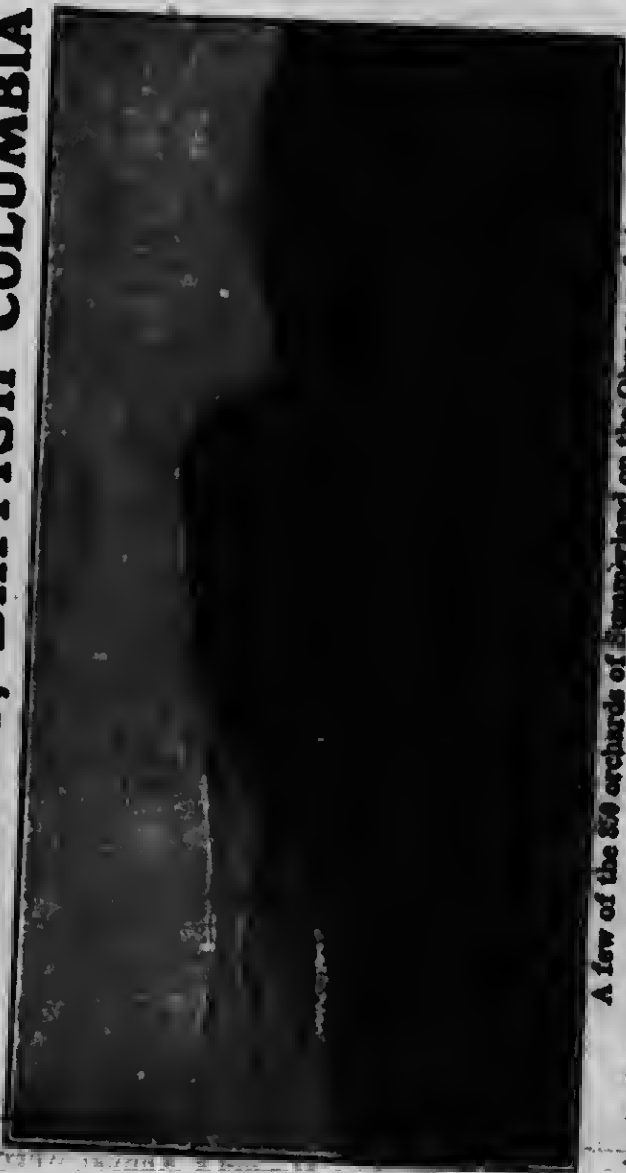
The Secretary, Board of Trade, Salmon Arm, B.C.

VICTORIA (Vancouver Island), capital of British Columbia, founded 1846. Terminus of Esquimalt and Nanaimo Ry. and Victoria and Sidney Ry. Steamers tri-weekly to San Francisco, 870 miles; daily to points on Puget Sound and Vancouver. Steamers to Alaska, Mexico and intermediate points, Australasia and the Orient. Wharves, 30 feet of water at low tide. B.C. Ex., N.P. Ex., Dom. Ex., Wells-Fargo Ex. Hotels, Empress (C.P.R.), Dallas \$3 to \$5, Driard \$2 to \$5, Victoria \$2 to \$4, Dominion \$1.50 to \$2. Neighbourhood supplies sea fishing food, timber, coal, iron, copper. Industries, over 50 factories, including biscuits, boats, brass, beer, carriages, furniture, machinery, lumber, soaps, shipbuilding, fish canning, tents, paints, cement. A favourite residential city, famous for its natural beauty. Climate rarely over 75° or below freezing. Value of imports, \$5,416,777, and exports \$1,514,275, 12 months ending 30th June, 1910. Vessels entered in 12 months, 1908-9, 4,169; cleared, 3,621. Esquimalt harbour, formerly reserved for the North Pacific fleet of H.M. Royal Navy, is now open to merchant vessels. Pop. 47,500.

SPECIAL OPPORTUNITIES.—Tannery, woollen mills, iron and steel industries, fruit canning and preserving, deep sea fisheries, fruit growing, cooperage, cigar box factory, mining, lumbering, and wood-working machinery factory, brush, broom, nail, glass, match and can factories. Building of modern apartment houses in city and suburbs. Establishment of car shops. Dairying, sheep and horse raising, and mixed farming, automobile manufactory. Write Sec. Bd. Trade or Vancouver Island Development League.

To secure special attention mention Heaton's Annual when writing to local references.

SUMMERLAND, BRITISH COLUMBIA



A few of the 80 orchards of Summerland on the Okanagan Lake.

At the first Canadian Apple Show, held at Vancouver in November, 1910, Summerland took the FIRST PRIZE for the best mixed carload of apples in competition with the other famous fruit-growing districts in Canada and the United States. See paragraph "Okanagan Valley—Summerland District," page 24, and description of Summerland, page 67. If this interests you write for full information to the

Secretary, Board of Trade, Summerland, B.C., Canada

British Columbia Government Bulletins

COPIES of these bulletins can be obtained free from Hon. John H. Turner, Agent-General for British Columbia, Salisbury House, Finsbury Circus, London, England, or from Frank J. Clarke, Sec. Bureau of Provincial Information, Victoria, B.C.

Land and Agriculture, Bulletin 10.

Game, Bulletin 17.

Fisheries, Bulletin 20.

New British Columbia, Bulletin 22.

Handbook of British Columbia, Bulletin 23.

Game Fishes, Bulletin 25.

Columbia, Kootenay Valley, Bulletin 26.

British Columbia, the Mineral Province.

Bulletins issued by the Department of Agriculture on fruit growing, poultry raising, live stock, etc.

ADDRESS

779886

This book can be
mailed as print-
ed matter — use
1c. (1c.) stamp.
To keep closed
for mailing, use
rubber band or
clip.



