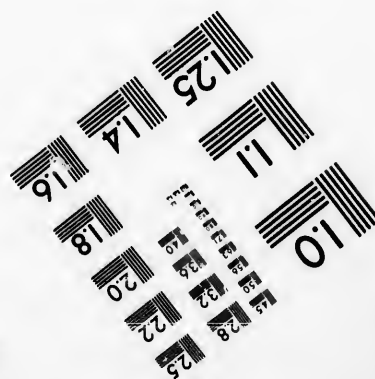
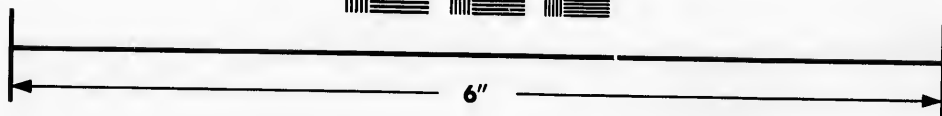
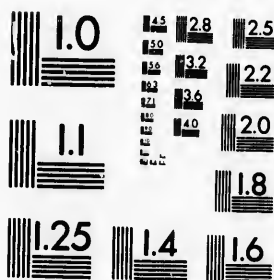


**IMAGE EVALUATION
TEST TARGET (MT-3)**



**Photographic
Sciences
Corporation**

23 WEST MAIN STREET
WEBSTER, N.Y. 14580
(716) 872-4503



**CIHM
Microfiche
Series
(Monographs)**

**ICMH
Collection de
microfiches
(monographies)**



Canadian Institute for Historical Microreproductions / Institut canadien de microreproductions historiques



© 1993

Technical and Bibliographic Notes / Notes techniques et bibliographiques

The Institute has attempted to obtain the best original copy available for filming. Features of this copy which may be bibliographically unique, which may alter any of the images in the reproduction, or which may significantly change the usual method of filming, are checked below.

L'Institut a microfilmé le meilleur exemplaire qu'il lui a été possible de se procurer. Les détails de cet exemplaire qui sont peut-être uniques du point de vue bibliographique, qui peuvent modifier une image reproduite, ou qui peuvent exiger une modification dans la méthode normale de filmage sont indiqués ci-dessous.

- Coloured covers/
Couverture de couleur
- Covers damaged/
Couverture endommagée
- Covers restored and/or laminated/
Couverture restaurée et/ou pelliculée
- Cover title missing/
Le titre de couverture manque
- Coloured maps/
Cartes géographiques en couleur
- Coloured ink (i.e. other than blue or black)/
Encre de couleur (i.e. autre que bleue ou noire)
- Coloured plates and/or illustrations/
Planches et/ou illustrations en couleur
- Bound with other material/
Relié avec d'autres documents
- Tight binding may cause shadows or distortion
along interior margin/
La reliure serrée peut causer de l'ombre ou de la
distorsion le long de la marge intérieure
- Blank leaves added during restoration may appear
within the text. Whenever possible, these have
been omitted from filming/
Il se peut que certaines pages blanches ajoutées
lors d'une restauration apparaissent dans le texte,
mais, lorsque cela était possible, ces pages n'ont
pas été filmées.

- Coloured pages/
Pages de couleur
 - Pages damaged/
Pages endommagées
 - Pages restored and/or laminated/
Pages restaurées et/ou pelliculées
 - Pages discoloured, stained or foxed/
Pages décolorées, tachetées ou piquées
 - Pages detached/
Pages détachées
 - Showthrough/
Transparence
 - Quality of print varies/
Qualité inégale de l'impression
 - Continuous pagination/
Pagination continue
 - Includes index(es)/
Comprend un (des) index
- Title on header taken from: /
Le titre de l'en-tête provient:
- Title page of issue/
Page de titre de la livraison
 - Caption of issue/
Titre de départ de la livraison
 - Masthead/
Générique (périodiques) de la livraison

- Additional comments: /
Commentaires supplémentaires:

This item is filmed at the reduction ratio checked below /
Ce document est filmé au taux de réduction indiqué ci-dessous.

| | | | | | |
|--------------------------|--------------------------|-------------------------------------|--------------------------|--------------------------|--------------------------|
| 10X | 14X | 18X | 22X | 26X | 30X |
| <input type="checkbox"/> | <input type="checkbox"/> | <input checked="" type="checkbox"/> | <input type="checkbox"/> | <input type="checkbox"/> | <input type="checkbox"/> |
| 12X | 16X | 20X | 24X | 28X | 32X |

The copy filmed here has been reproduced thanks to the generosity of:

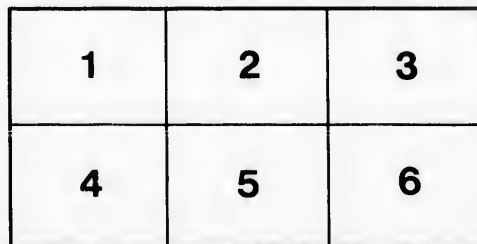
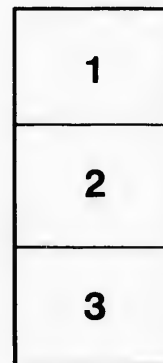
National Library of Canada

The images appearing here are the best quality possible considering the condition and legibility of the original copy and in keeping with the filming contract specifications.

Original copies in printed paper covers are filmed beginning with the front cover and ending on the last page with a printed or illustrated impression, or the back cover when appropriate. All other original copies are filmed beginning on the first page with a printed or illustrated impression, and ending on the last page with a printed or illustrated impression.

The last recorded frame on each microfiche shall contain the symbol \rightarrow (meaning "CONTINUED"), or the symbol ∇ (meaning "END"), whichever applies.

Maps, plates, charts, etc., may be filmed at different reduction ratios. Those too large to be entirely included in one exposure are filmed beginning in the upper left hand corner, left to right and top to bottom, as many frames as required. The following diagrams illustrate the method:



L'exemplaire filmé fut reproduit grâce à la générosité de:

Bibliothèque nationale du Canada

Les images suivantes ont été reproduites avec le plus grand soin, compte tenu de la condition et de la netteté de l'exemplaire filmé, et en conformité avec les conditions du contrat de filmage.

Les exemplaires originaux dont la couverture en papier est imprimée sont filmés en commençant par le premier plat et en terminant soit par la dernière page qui comporte une empreinte d'impression ou d'illustration, soit par le second plat, selon le cas. Tous les autres exemplaires originaux sont filmés en commençant par la première page qui comporte une empreinte d'impression ou d'illustration et en terminant par la dernière page qui comporte une telle empreinte.

Un des symboles suivants apparaîtra sur la dernière image de chaque microfiche, selon le cas: le symbole \rightarrow signifie "A SUIVRE", le symbole ∇ signifie "FIN".

Les cartes, planches, tableaux, etc., peuvent être filmés à des taux de réduction différents. Lorsque le document est trop grand pour être reproduit en un seul cliché, il est filmé à partir de l'angle supérieur gauche, de gauche à droite, et de haut en bas, en prenant le nombre d'images nécessaire. Les diagrammes suivants illustrent la méthode.

qu'il
cet
de vue
e
tion
és



The Central Canada Chamber of Mines

PATRONS.

HIS EXCELLENCY

THE RIGHT HON. THE EARL OF MINTO, G. C. M. G.,
H. M. Privy Council, Governor-General of Canada.

THE RIGHT HON. SIR WILFRID LAURIER, G.C.M.G.,
Premier of Canada.

LORD STRATHCONA AND MOUNT ROYAL, G.C.M.G.,
Governor of the Hudson's Bay Company; Director of Canadian Pacific Railway; President of the Bank of Montreal; High Commissioner in England for the Dominion of Canada.

THE HON. J. C. PATTERSON, P. C.,
Lieutenant-Governor of Manitoba, Canada.

SENATOR THE HON. GEO. A. COX,
President of the Canadian Bank of Commerce, etc.

SOLICITORS

Messrs. Ewart, Fisher & Wilson, Barristers, Solicitors and Notaries, Winnipeg.

BANKERS.

The Bank of Ottawa.
The Imperial Bank of Canada.

HONORARY PRESIDENTS.

The Hon. Hugh John Macdonald, P. C.,
Premier of the Province of Manitoba.

The Hon. H. Aylmer, B. C. L., Quebec.

PRESIDENT.

F. W. Stobart, Esq., Stobart, Sons & Company, Ltd.
Ex-President Board of Trade.

VICE-PRESIDENTS.

D. W. Bole, Esq., Ex-President Winnipeg Board of Trade;
President of the Bole Drug Company, Limited.

C. W. Chadwick, Esq., Board of Trade.

Lt.-Gen. Sir Henry Wilkinson.

EXECUTIVE COMMITTEE.

H. H. Beck, Esq., D. K. Elliott, Esq., H. T. Champion, Esq., F. W. Heubach, Esq., R. A. Mather, Esq., Robt. Rogers, Esq., R. H. Agur, Esq., W. A. Weir, Esq.

SECRETARY.

Mr. F. H. Malcolm.
Offices: Manitoba Trusts Building, Winnipeg,
Central Canada.

HD9536

c22

c45

1898

GENERAL COMMITTEE.

Senator the Hon. George A. Cox, President Canadian Bank of Commerce, etc.

D. K. Elliott, Esq., President Board of Trade.

J. B. Monk, Esq., Manager Bank of Ottawa.

R. A. Mather, Esq., Manager Keewatin Lumber Company, Limited.

Robert Rogers, Esq., M. P., Manitoba.

C. W. Chadwick, Esq., late President Board of Trade.

Lt.-Gen. Sir Henry C. Wilkinson.

D. C. Cameron, Esq., President Lumber Co., Ltd.

D. L. Mather, Esq., Merchant, Keewatin Electric Power Company, Limited.

The Hon. H. Aylmer, B. C. L., Barrister, Quebec.

The Hon. Hugh J. Macdonald, Premier of Manitoba.

Col. S. W. Ray, Banker, Port Arthur.

W. A. Weir, Esq., Manager Imperial Bank of Canada.

F. R. Goodwin, Esq., Manager Bank of Ottawa, Rat Portage.

F. W. Stobart, Esq., (Stobart, Sons & Company,) late President Board of Trade.

R. H. Agur, Esq., Manager Massey-Harris Company, Ltd.

A. M. Nanton, Esq., Manager North of Scotland and Canadian Mortgage Company, Ltd. (Messrs. Osler, Hammond & Nanton.)

H. H. Beck, Esq., V.-President and Managing Director Manitoba Assurance Company, Ltd.

J. S. Aikins, Esq., Agent for Landed Estates.

H. C. Hammond, Esq., (Messrs. Osler & Hammond), Toronto.

Col. J. D. Crawford, Montreal.

John Love, Esq., Grain Merchant.

D. W. Bole, Esq., Ex-President Board of Trade, President Bole Drug Company, Ltd.

F. W. Drewry, Esq., Brewer.

H. S. Crotty, Esq., Agent for Landed Estates.

George D. Wood, Esq., Wholesale Hardware Merchant.

C. S. Hoare, Esq., Manager Imperial Bank of Canada.

C. A. Kennedy, Esq., Manager Bank of Nova Scotia.

F. W. Heubach, Esq., Manager Winnipeg Industrial Exhibition Association.

H. T. Champion, Esq., Banker.

R. H. Agur

Hon. H. Aylmer

J. S. Aikins

W. F. Aylmer

Montague

Hudon

Dr. R. J. Mather

Surg

F. H. Beck

ance

D. W. Bole

pany

H. H. Beck

ance

W. S. Beck

.....

Senator the Hon. H. Aylmer

dian

C. W. Chadwick

Col. J. D. Crawford

John H. Love

E. C. Cameron

.....

D. C. Cameron

Port Arthur

Cameron

.....

Crotty &

H. T. Champion

ion)

S. S. Hoare

F. W. Heubach

John Dear

pany

Geo. Drewry

Jas. Derry

Dr. Edmiston

D. K. Elliott

Ewart, Phil

.....

J. P. Elliott

T. R. Ferguson

J. Findlay

W. M. Gardner

Gardiner,

porte

T. H. Gilchrist

F. R. Godwin

F. W. Heubach

Exhibition

L. Hillier

.....

H. C. Hoare

.....

Frank W. Heubach

C. S. Hoare

.....

R. H. Hay

.....

FOUNDATION MEMBERS.

- R. H. Agur, Esq., Mgr. Massey-Harris Co., Ltd... Winnipeg
 Hon. H. Aylmer, Esq., B.C.L., Barrister Quebec
 J. S. Aikins, Esq., Agent for Landed Estates... Winnipeg
 W. F. Alloway, Esq., Banker Winnipeg
 Montague Aldous, Esq., Chief, Land Department,
 Hudson's Bay Company Winnipeg
 Dr. R. J. Blanchard, M. R. C. S., Physician and
 Surgeon Winnipeg
 F. H. Brydges, Esq., National and Imperial Insur-
 ance Company Winnipeg
 D. W. Bole, Esq., President The Bole Drug Com-
 pany, Ltd. Winnipeg
 H. H. Beck, Esq., Vice-President Manitoba Insur-
 ance Company Winnipeg
 W. S. Beck, Esq., Mining Engineer and Surveyor,
 Rat Portage
 Senator the Hon. George A. Cox, President Cana-
 dian Bank of Commerce, etc., etc. Toronto
 C. W. Chadwick, Esq., Board of Trade Rat Portage
 Col. J. D. Crawford, Stock Exchange Montreal
 John H. Chaloner, Esq., Gentleman Rat Portage
 E. C. Chapman, Esq., Editor "News" (Newspaper)
 Rat Portage
 D. C. Cameron, Esq., Manager and President Rat
 Portage Lumber Company Rat Portage
 Cameron & Heap, Produce and Export Merchants,
 Rat Portage
 Crotty & Cross, Agents for Estates Winnipeg
 H. T. Champion, Esq., Banker (Alloway & Champ-
 ion) Winnipeg
 S. S. Cummins, Esq., Commission Merchant... Rat Portage
 F. W. Drewry, Esq., Brewer Winnipeg
 John Dean, Esq., Manager Hamilton Powder Com-
 pany Rat Portage
 Geo. Drewry, Esq., Brewer Rat Portage
 Jas. Derry, Esq., Gentleman Rat Portage
 Dr. Edmison, M. R. C. C. S., Physician Rat Portage
 D. K. Elliott, Esq., President Board of Trade... Winnipeg
 Ewart, Fisher & Wilson, Barristers and Solicitors,
 Winnipeg
 J. P. Earngey, Editor "Miner" (Newspaper) Rat Portage
 T. R. Ferguson, Esq., Barrister and Solicitor... Rat Portage
 J. Findlay, Esq., Massey-Harris Company, Ltd... Toronto
 W. M. Gibson, Esq., Importer and Merchant Winnipeg
 Gardiner, Rice, Macleod & Co., Merchants and Im-
 porters Rat Portage
 T. H. Gilmour, Esq., Q. C., Barrister Rat Portage
 F. R. Godwin, Esq., Manager Bank of Ottawa... Rat Portage
 F. W. Heubach, Esq., General Manager Industrial
 Exhibition Association Winnipeg
 L. Hilliard, Esq., Hotel and Theatre Proprietor...
 Rat Portage
 H. C. Hammond, Esq., Messrs. Osler & Hammond,
 Toronto
 Frank W. Hockley, Esq., Gentleman Rat Portage
 C. S. Hoare, Esq., Manager Imperial Bank of Canada,
 Winnipeg
 R. H. Hayward, Esq., Sec'y Board of Underwriters
 Winnipeg

FOUNDATION MEMBERS

- C. A. Kennedy, Esq., Manager Bank of Nova Scotia, Winnipeg
- H. W. Kennedy, Esq., Rat Portage Lumber Co., Rat Portage
- John Love, Esq., Grain Merchant, Ex-President Board of Trade Winnipeg
- F. H. Malcolm, Esq., late Managing Director Transvaal Diamond Boring and Developing Co., Ltd. Winnipeg
- J. B. Monk, Esq., Manager Bank of Ottawa Winnipeg
- R. A. Mather, Esq., Manager Keswatin Lumber Co., Ltd. Keewatin
- J. A. McRae, Esq., President Niagara Falls Metal Works Co., Ltd. Niagara
- Hon. Hugh John Macdonald, M. P. P., Prime Minister of Manitoba Winnipeg
- D. L. Mather, Esq., Electric Power Co., Ltd., Rat Portage
- W. G. Nicholls, Esq., Hudson's Bay Co. Winnipeg
- C. E. Neads, Esq., Manager of the Rat Portage Hardware Co Rat Portage
- A. M. Nanton, Esq., Manager North of Scotland and Canadian Mortgage Co., Ltd. (Messrs. Osler, Hammond & Nanton) Winnipeg
- L. A. Nares, Esq., Canadian and American Mortgage Trust Company, Ltd. Winnipeg
- L. W. Partridge, Esq., Gentleman Detroit
- Wm. Pearson, Esq., Estate Agent Winnipeg
- J. A. Partington, Esq., Merchant and Importer, Rat Portage
- W. D. Pettigrew, Esq., Commission Merchant, Winnipeg
- Robert Rogers, Esq., M. P., Manitoba Winnipeg
- Col. W. S. Ray, Banker Port Arthur
- Dr. S. S. Scovill, M. R. C. C. S., Physician and Surgeon Rat Portage
- G. W. Sadler, Esq., M.I.C.E., Civil Engineer, London
- The Stovel Company, Printers, Publishers and Lithographers Winnipeg
- F. W. Stobart, Esq., (Stobart, Sons & Co., Ltd.) Merchants and Importers Winnipeg
- W. P. Sweatman, Esq., Manager Mutual Life Insurance Company of New York Winnipeg
- G. F. Stephens, Esq., Wholesale Color Merchant, Winnipeg
- J. A. Thomson, Esq., Grain Merchant Winnipeg
- C. J. Verran, Esq., Gentleman Rat Portage
- John Werner, Esq., Druggist and Chemist, Rat Portage
- W. A. Weir, Esq., Manager Imperial Bank of Canada Rat Portage
- Lt.-Gen. Sir Henry Wilkinson Rat Portage
- R. J. Whitla & Co., Merchants and Importers, Winnipeg
- Geo. D. Wood, Esq., Importer and Wholesale Hardware Merchant Winnipeg

APPLICATIONS FOR MEMBERSHIP.

Gentlemen or Corporations desiring to become members of the Institution, can obtain forms of application by applying to the Secretary, Central Canadian Chamber of Mines, Winnipeg, Central Canada.

CENT

1. The of assoc bers of tative a plication

2. To ests of sion of thereto, and info service t which m

3. To sults to and for Gold Min

4. To perties, statistics tails and detailed companie tion, fro elsewhere and other ers and ence in t and equip

5. To reliable incidents people in world.

6. To benefit an transactio from othe proper an venue sha of the in dian min receive re

...cotia,
 ...Winnipeg
 Co...
 Rat Portage
 ident
 ...Winnipeg
 rans-
 Co.,
 ...Winnipeg
 ...Winnipeg
 Co.,
 ...Keewatin
 Metal
 ...Niagara
 Min-
 ...Winnipeg
 Rat Portage
 ...Winnipeg
 rriage
 Rat Portage
 land
 sssrs.
 ...Winnipeg
 Mort-
 ...Winnipeg
 Detroit
 ...Winnipeg
 r....
 Rat Portage
 ...Winnipeg
 ...Winnipeg
 Port Arthur
 Sur-
 Rat Portage
London
 Lith-
 ...Winnipeg
 (td.)
 ...Winnipeg
 In-
 ...Winnipeg
 mant,
 ...Winnipeg
 ...Winnipeg
 Rat Portage
 Rat Portage
 Can-
 Rat Portage
 Rat Portage
 ...Winnipeg
 ard-
 ...Winnipeg

 e members
 by applying
 , Winnipeg,

CENTRAL CANADA CHAMBER OF MINES.

MEMORANDUM OF ASSOCIATION.

1. The Constitution in full, containing also the articles of association and a complete list to date, of all members of the institution, embracing Foundation, Representative and Associate members, will be supplied upon application to the secretary.

OBJECTS OF THE INSTITUTION.

2. To advance, promote and protect the mining interests of Central Canada, by the consideration and discussion of all questions connected therewith or incidental thereto, and by the collection and circulation of statistics and information relative thereto or calculated to be of service to such interests, as well as by all other means which may from time to time be considered desirable.

3. To publish tabulated monthly statistics of actual results together with monthly outputs, on the same lines and for the same objects as obtains in other important Gold Mining Centres.

4. To admit, register and keep records of mining properties, operations and results, to tabulate and verify statistics of operations and yields, recording periodical details and statistics of same, so as to enable a reliable and detailed history to be kept of mining propositions, areas, companies and syndicates who are members of the institution, from an independent source, so that in Europe and elsewhere reliable and disinterested data can be obtained, and otherwise furnish information for the benefit of strangers and others calculated to inspire the necessary confidence in the industry conducive to the efficient development and equipment of mining generally.

5. To disseminate through the world's newspaper press reliable information connected with Canadian mining or incidental thereto, and keep in touch by this means with people interested in mining investments throughout the world.

6. To conduct and carry on the institution for public benefit and not for profit, charging only such fees upon transactions and registrations, and receiving such revenues from other sources as shall be deemed necessary for the proper and efficient conduct of the institution, which revenue shall be applied solely for the benefit and expansion of the institution and for promoting the interest of Canadian mining in Central Canada (Manitoba and Ontario). To receive revenue for the support of the institution from sub-

scriptions of members, associates, and subscribers, fees from the owners of mining propositions, various syndicates and companies for registration and preservation of histories and records, assays, audits, engineers' and experts' reports, verification of statistical information and returns, rents, Government subsidies and other gifts, subscriptions for use of reading rooms and from any other source the committee of the institution may from time to time accept or determine.

7. To issue, as deemed desirable, a monthly report of all matters of mining interest, including a detailed record of the gold output; also full particulars of the quantity of ores crushed, number and weight of stamps working, tons of ore mined, percentage of waste sorted out, tons of ore milled, days milling, tons of ore crushed per day, yield of gold per ton extracted by cyanide process, and total value of ore, with percentages of returns, cost of mining and milling ore, both collectively, averaged and from each individual mine, together with the gross output from the entire goldfield or goldfields, and forwarding printed analysis and statistics of same to the principal stock exchanges, both in America and Europe, also, to the newspapers for publication throughout the world.

8. To combine, organize and work generally for the benefit of Canadian mining upon all matters connected therewith or incidental thereto.

9. To verify and require such proof as the committee may determine under affidavit or otherwise, of all statistics required and furnished to the institution for insertion in its records and periodical reports, and, if necessary, to confirm the same by certificates from mine and bank managers, auditors or other responsible means of verification.

10. To establish and maintain, when deemed desirable, for the use of members, a Library and Museum, embracing a collection of all articles likely to prove of interest in connection with the objects of the Chamber. To print and publish, as may be determined upon, weekly or monthly Journals, Stock Exchange lists, reports and other matters conducive to the interests, requirements and protection of the Mining Industries in Central Canada and the general public investing in same, also to procure and file in the Reading Rooms of the Institution newspapers devoted to Mining Interests in other parts of the world; also Scientific, Mining and Machinery Journals; Stock Exchange Lists; reports and other useful matter incidental to mining interests and requirements.

11. To fix and settle through the committee, from time to time, all fees payable by any company or individual for the benefit and efficient working of the institution.

12. To register and keep records of such properties, syndicates or companies as the committee of the institution may deem desirable, and if so decided upon, to examine, and to grant certificates of competency to, mine officials such as may be required for mining operations, and keep records of the same in the books of the institution.

13. To act as arbitrators for the settlement of disputes arising out of mining, connected therewith or incidental thereto.

14. T
petitions
any of t
sembly o
fecting t
pilation
calculate
such oth
desirable

15. T
Reading,
and asso
bers and

To be
stitutions
may dete

To ac
claims,
lands an
etc., or f
ing matt
the comm

The M
of Winn
majority
Branch o
and in su
ing of th

NOTES
cles of th
of the in

CENT

At a p
Winnipeg,
of the mo
lished in

The C
been foun
bership (b
representa
the Domin

It has
Johannesb
for South
world the
tively thro

scribers, fees
is syndicates
on of histor-
experts' re-
and returns,
subscriptions
r source the
time accept

report of all
ed record of
quantity of
orking, tons
ons of ore
lay, yield of
total value
mining and
n each indi-
m the entire
analysis and
ges, both in
for publica-

lly for the
s connected

e committee
all statistics
ertion in its
, to confirm
k managers,
tion.

d desirable,
m, embrac-
of interest
To print
r month-
other mat-
and protec-
da and the
e and file in
ers devoted
also Scien-
Exchange
to mining

from time
ividual for
on.

erties, syn-
institution
o examine,
ne officials
and keep
n.

of disputes
incidental

14. To promote any legislative measures, petition or petitions to The Government of the Dominion of Canada or any of the Provincial Governments or any Legislative Assembly or administrative body on any matter directly affecting the aforesaid interests and by the collection, compilation and circulation of actual statistics and information calculated to be of service to such interests, as well as by such other means as from time to time may be considered desirable.

15. To supply and maintain, when deemed desirable, Reading, Meeting and Club Rooms for the use of members and associates, also rooms for the accommodation of members and for meetings of public companies.

To become affiliated and keep in touch with kindred institutions throughout the world wherever the committee may determine and deem advisable.

To act as agent for verification of all classes of mining claims, rights, shares and titles, including also titles to lands and water rights for payment of Government fees, etc., or for any other purpose whatever connected with mining matters or incidental thereto, as may in the opinion of the committee be deemed expedient or desirable.

The head offices of the institution shall be in the City of Winnipeg, or elsewhere, as may be decided upon by a majority of the members in general meeting assembled. Branch offices or agencies may be established at such times and in such places as may be determined upon by a meeting of the General Committee.

NOTE.—The Constitution in full, containing the articles of the Association, also a complete list of all members of the institution, can be obtained upon application.

CENTRAL CANADA CHAMBER OF MINES— INAUGURATION YESTERDAY.

Reprinted from the Free Press.

At a public meeting held yesterday in the City Hall, Winnipeg, was inaugurated what promises to become one of the most important public institutions hitherto established in the Dominion of Canada.

The CENTRAL CANADA CHAMBER OF MINES has been founded under most favorable auspices and its membership (below) includes some of the most prominent and representative commercial men and institutions throughout the Dominion.

It has been organized upon the same basis as the Johannesburg Chamber of Mines, which has done so much for South Africa by introducing and keeping before the world the mining resources of that continent, and it is entirely through the confidence reposed in that institution

that capital has hitherto flowed so freely from Europe for the development of African mines. In the short period of six years no less than twelve hundred and fifty million dollars (\$250,000,000) of European capital having been profitably invested at dividends averaging 67 per cent. per annum, consequently abundance of capital has always been forthcoming for fresh enterprises whenever the imprimitur of that institution justified it.

Johannesburg a few years ago was quite unknown to the rest of the world, and even the Transvaal itself was merely a geographical expression. With the establishment of its Chamber of Mines all this was changed as if by magic, in the first place by a systematic propaganda of absolutely reliable, general and statistical information. This was achieved by supplying the newspaper press of Europe daily with short paragraphs of interesting information upon mining matters, never allowing the interest to flag for a moment, until the millions of continental Europe and throughout the world became aware of the fact that there was such a place as Johannesburg, and later to the fact that gold was there in payable quantities, soon the interest in those fields became so pronounced that (until the war) there was scarcely a newspaper throughout the world, in any language, that did not eagerly seek and publish its statistical information and progressive gold output.

It is only reasonable to expect similar results for Canada if the same lines are followed in their integrity, which cannot fail to have important results and cause a rapid flow of population and a corresponding increase in the volume of trade generally.

That the aims of the institutions as herein outlined are commercially sound will be readily admitted, and the want of such on the American continent is obvious and may probably account for the fact that our mineral resources have not hitherto received the attention in the centres of capital in Europe justified by their intrinsic merits, for it is a significant fact that not a single American or Canadian mine has yet been listed on the Stock Exchanges of Europe. Upon reference to some of the comparative statistics already issued by the Central Canada Chamber of Mines it appears that the magnificent returns from African Gold Fields are derived from low grade ores. The average for the whole Gold Field, taking the statistics for a year, being under \$6.00 per ton over the plates. The ores being obtained from levels ranging up to 4,000 feet in depth. The conditions in Canada are undoubtedly far more favorable, the ore bodies are equally large and would, without doubt, give much higher results at a lower cost of extraction.

A very interesting address, with comparative statistics, applied to the Gold Fields of the Lake of the Woods, Ontario, Lakes Manitoba and Winnipeg, Port Arthur, etc., upon this subject by Mr. F. H. Malcolm, late President of the Johannesburg Diamond Boring and Developing Company, has already been published by the institution, which can be obtained free upon application.

Should the Chamber of Mines adhere strictly to its constitution it cannot fail to achieve important results for Canada, and render it a valuable adjunct to the established semi-public institutions devoted to the commercial interests of the Dominion.

The personnel of the institution, elected at the meeting, is undoubtedly strong, embracing as it does some of

the most
cial me
weight
rank o
hoped t
which i
tal thro

THE M

Folle
F. H. M
mond B
of the C
From
Transva
the ton,
ton. T
ceeding
also sca

The
about \$5
depth 25
fore the
mine, w

The
Canada
Ontario
Woods m
some m
ing \$5.00
might be
milling
Rand) sh

Labor
white lab
month an
expensive
cannot b

Trans
than 20 p
cash as
dividends
The divid
also upon
the whol
of shares
about 37
Mines, L
stand at

m Europe for
short period of
y million dol-
y been profit-
cent. per an-
always been
the imprima-

unknown to
al itself was
establishment
ged as if by
ropaganda of
information
per press of
ing informa-
interest to
ental Europe
he fact that
later to the
soon the in-
at (until the
ut the world,
publish its
tput.

ults for Can-
grity, which
use a rapid
e in the vol-

outlined are
nd the want
s and may
al resources
centres of
erits, for it
n or Cana-
exchanges of
ative statis-
Chamber of
om African
The average
for a year,
ores being
depth. Tho
e favorable,
out doubt,
traction.

ive statis-
the Woods,
Arthur, etc.,
resident of
mping Com-
ion, which

tly to its
results for
established
l interests

the meet-
some of

the most prominent and representative public and commercial men in Canada, which should give it the necessary weight and place it both here and in Europe in the front rank of our useful public institutions. And it is to be hoped that its future operations will justify the confidence which it will unquestionably receive in the centres of capital throughout the world.

THE MINERAL RESOURCES OF CENTRAL CANADA AND SOUTH AFRICA COMPARED.

Reprinted from the Free Press.

Following is an address given at the City Hall by Mr. F. H. Malcolm (late President of the Johannesburg Diamond Boring and Development Co., Ltd.) to the members of the Central Canada Chamber of Mines:—

From published statistics it will be noted that the Transvaal ores are low grade, averaging only 6½ dwts. to the ton, over the plates, in value slightly under \$6.00 per ton. The mines are deep, averaging 2,500 feet, some exceeding 4,000 feet, before the reef is reached. Water is also scarce.

The cost of constructing these immense dams average about \$500,000, and sinking and equipping a shaft to that depth about \$250,000, or £150,000 in all has to be spent before they are on the same basis as a Canadian out-crop mine, when the first pick is put into the ground.

The Transvaal reefs average 10 feet in thickness. In Canada a fair average reef is four feet, but many run in Ontario up to 15 feet. Average returns from Lake of the Woods mines now working would give about \$14 to the ton, some much higher results. Large out-crop dykes returning \$5.00 per ton upwards are common in Ontario, which might be worked as quarries. The cost of mining and milling the latter with modern appliances (as on the Rand) should not exceed \$1.50 per ton.

Labor is considerably higher in Africa, averaging for white labor \$6.00 per day, Kaffir labor being \$17.00 per month and found. All necessaries of life are much more expensive in Africa and a workman's three-roomed cottage cannot be obtained in Johannesburg under \$35 per month.

Transvaal mines are highly capitalized, but not more than 20 per cent. of nominal capital has been provided in cash as working capital, yet, notwithstanding this, the dividends are large, as will be observed from statistics. The dividends (average 67 per cent. per annum) are paid also upon vendors shares which equal about 80 per cent. of the whole nominal capitalization. And the present price of shares in Europe, notwithstanding the war, average about 370 per cent. premium, the highest being Rand Mines, Ltd., whose £1 shares now (even in war time) stand at £38 on London Stock Exchange.

Both Transvaal and Central Canada ore are free milling and these remarks apply to over plate yields only (in both cases) for the reason that few Canadian mines are equipped with modern cyanide or other processes for extraction of residues from tailings, slimes, etc., which would probably increase yields about 35 per cent, as in the Transvaal.

The mill batteries in Canada have mostly light stamps—in Africa the average weight of stamp is 1,250 lbs. against 900 pounds in Canada—and other appliances compared with the Transvaal are of most primitive description—the advantage of heavy stamps being that they double the capacity at only 10 per cent. increase of power.

The Johannesburg Chamber of Mines has been established only nine years, but has introduced during that short period about twelve hundred and fifty millions of dollars of capital, equalling £250,000,000, now invested in the mining industry in the region, and supplies of capital are always forthcoming for new enterprises. The reason of this being the absolute confidence reposed by European investors in the integrity of the Johannesburg institution, which has disseminated its monthly statistical information and is now known and recognized as the premier institution of its kind throughout the world.

The Johannesburg main reef is about fifty miles long by seven miles wide. In Western Canada the Lake of the Woods gold district alone is about 350 miles long by about 150 miles wide; then there are many other promising gold areas, such as on the shores of Lakes Manitoba and Winnipeg, Port Arthur, etc., and taking all these facts into consideration and comparing the conditions with those obtaining elsewhere, there is no reason whatever, with adequate appliances and machinery, why the Central Canadian gold mines should not soon be included amongst the most productive in the world.

As outside issues and enterprises emanating from the Johannesburg Chamber of Mines are the railways and telegraphs. No less than five lines of railway converge on Johannesburg, all built during the last six years, the cost of which is about equal to the entire Canadian Pacific railway system, and a line of telegraph is now being built right through Africa from the Cape to Cairo.

Johannesburg, at the time of establishing its chamber of mines, was much in the same condition as the mining districts of Central Canada are to-day, their very existence being unknown in Europe, and necessarily, therefore, without capital. That city was centred in the heart of the South African continent, and being without either railway or telegraphic communication, 1,400 miles by road from Cape Town, was quite unknown to the rest of the world. It has achieved its fame throughout the world entirely through the reliable information and propaganda of its chamber of mines, and now there is scarcely a newspaper in the whole world, in any language, that does not publish its telegraphed information of the progressive monthly output of gold.

Compare these results with the mines of Canada and the United States of America, which in consequence of no such institution being hitherto in existence, not a single American or Canadian mine has yet been listed or recognized on the stock exchanges of Europe.

In o
Chambe
whateve
perlor t
size of
facilities
Canada,
water p
regular
importan
surface,
now wor
where, v
aging re

The
ceeded 5
difficult
of Canad
American
and fifty
the Cent
ally thos
ments el
of the ex
which w
as a gol
vantageo
of popula

EXTRA

The G
the quart
of Ontario
of the La
nipeg.

The or
of Free M
ering som

In cer
grade ore,
surface, a
returns fr
reefs coul
in the nea

Unlimi
whole dist
that can b

At pres
the railwa
suits are s

Some c
have prov
size, grade

Statisti
be obtaine
issued by
peg, Centra

re are free
e yields only
adian mines
processes for
etc., which
cent, as in

ight stamps
lbs. against
pared with
n — the ad-
the capa-

been estab-
uring that
illions of
vested in
s of capital
The reason
European
stitution,
information
er institu-

miles long
ake of the
g by about
ising gold
and Win-
facts into
those ob-
with ade-
Canadian
the most

from the
and tele-
verage on
the cost
an Pacific
eing built

chamber
e mining
existence
ore, with-
c of the
railway
ad from
e world,
entirely
of its
newspaper
publish
monthly

ada and
ce of no
a single
r recog-

In order to rectify this anomaly the Central Canada Chamber of Mines has been organized, for there is no doubt whatever that the mines of Central Canada are greatly superior to any yet known in South Africa, both in extent, size of ore body, and grade of ore. The conditions and facilities for economical working are greatly in favor of Canada, both in respect to cost of labor, abundance of water power, cheapness of provisions, accessibility through regular railway communication in all directions, and the important fact that the reefs are payable almost from the surface, as has been abundantly proved by the few mines now working at the Lake of the Woods and other centres, where, with the most primitive appliances, highly encouraging results are even now being achieved.

The total white population of South Africa never exceeded 500,000 persons, the gold fields being distant and difficult of access. Compare this with the central position of Canada, with probably eighty millions of people on the American continent south of us, and about three hundred and fifty millions in Europe, all within ten days reach of the Central Canadian gold fields. Many of these (especially those who have made money through mining investments elsewhere) would undoubtedly invest, if they knew of the existence of these mines, a fractional percentage of which will suffice to place Canada on a satisfactory basis as a gold-producing centre, and cannot fail to prove advantageous to Canada as a whole, and the great expansion of population and commerce generally.

EXTRACT FROM THE CANADIAN GOVERNMENT GAZETTE.

GOLD FIELDS.

The Gold Fields of Central Canada are very extensive, the quartz reefs being situated principally in the Provinces of Ontario and Manitoba, in the hilly region on the shores of the Lake of the Woods, also Lakes Manitoba and Winnipeg.

The ore bodies are large, clearly defined Fissure Veins, of Free Milling high grade ores and of great extent, covering some 350 by 150 miles in area.

In certain localities there are immense bodies of low grade ore, running up to 150 feet and over in width, at the surface, and of unknown depth, 5 to 10 dwts. per ton mill returns from trial crushings are common averages; these reefs could be worked as quarries at small cost, and should in the near future yield important results.

Unlimited water power is available throughout the whole district, fuel is plentiful, and other facilities are all that can be desired for extensive mining operations.

At present development is only in its infancy, but as the railway now passes through this region, important results are anticipated in the near future.

Some of the pioneer mines with primitive appliances, have proved highly productive, and the reefs increase in size, grade and uniformity as depth is attained.

MINING.

Statistical information, relative to these gold fields, can be obtained from the monthly publications and statistics issued by the Central Canada Chamber of Mines, Winnipeg, Central Canada.



Free Grants of Land in Canada

160 Acres in MANITOBA and the NORTH-WEST
TERRITORIES;

100 to 200 in other Provinces.

IMPROVED FARMS at Reasonable Prices in Nova Scotia,
New Brunswick, Prince Edward Island, Quebec, Ontario,
Manitoba, the North-West Territories and British
Columbia.

LARGE EXPORT OF FARM AND DAIRY PRODUCE.

LIGHT TAXES. FREE SCHOOLS. GOOD MARKETS.

HEALTHY CLIMATE. SUNNY SKIES.

Openings for Capital in Trading, Manufacturing,
Mining, Etc.

Pamphlets containing full information respecting trade and commerce, the investment of capital, land regulations, demand for labor, rates of wages, cost of living, etc., can be had on application to the Office of the High Commissioner for Canada, 17 Victoria Street, S. W. (Mr. J. G. Colmer, Secretary); or to the following Agents of the Canadian Government:—Mr. A. F. Jury and Mr. G. H. Mitchell, 15 Water Street, Liverpool; Mr. H. M. Murray, 52 St. Enoch Square, Glasgow; Mr. John Grant, Parkhurst, Dumfries; Mr. Thomas Duncan, Carnoustie, Forfarshire, N.B.; Mr. C. R. Devlin, Commissioner for Emigration, and Mr. John Webster, 14 Westmoreland Street, Dublin; Mr. Edward O'Kelly, Harbour Board Buildings, Londonderry; and Mr. W. L. Griffith, 10, The Walks, Cardiff, Wales.

