

**CIHM
Microfiche
Series
(Monographs)**

**ICMH
Collection de
microfiches
(monographies)**



Cenedien Institute for Historical Microreproductions / Institut canadien de microreproductions historiques

© 1997

The copy filmed here has been reproduced thanks to the generosity of:

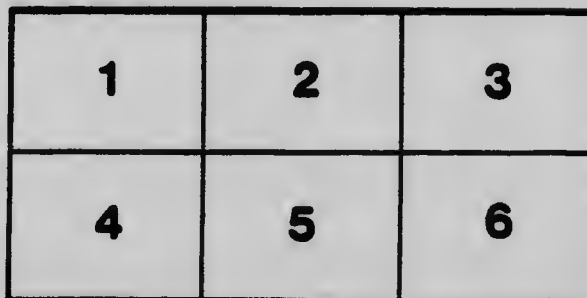
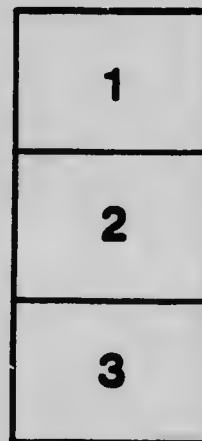
Archives of Ontario
Toronto

The images appearing here are the best quality possible considering the condition and legibility of the original copy and in keeping with the filming contract specifications.

Original copies in printed paper covers are filmed beginning with the front cover and ending on the last page with a printed or illustrated impression, or the back cover when appropriate. All other original copies are filmed beginning on the first page with a printed or illustrated impression, and ending on the last page with a printed or illustrated impression.

The last recorded frame on each microfiche shall contain the symbol \rightarrow (meaning "CONTINUED"), or the symbol ∇ (meaning "END"), whichever applies.

Maps, plates, charts, etc., may be filmed at different reduction ratios. Those too large to be entirely included in one exposure are filmed beginning in the upper left hand corner, left to right and top to bottom, as many frames as required. The following diagrams illustrate the method:



L'exemplaire filmé fut reproduit grâce à la générosité de:

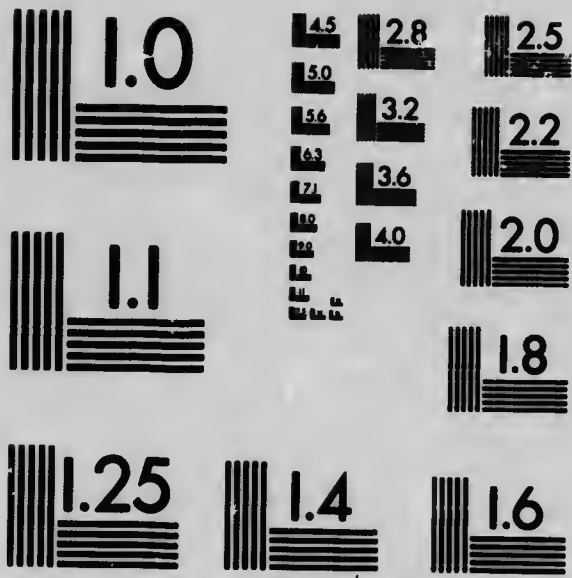
Archives publiques de l'Ontario
Toronto

Les images suivantes ont été reproduites avec le plus grand soin, compte tenu de la condition et de la netteté de l'exemplaire filmé, et en conformité avec les conditions du contrat de filmage.

Les exemplaires originaux dont la couverture en papier est imprimée sont filmés en commençant par le premier plat et en terminant soit par la dernière page qui comporte une empreinte d'impression ou d'illustration, soit par le second plat, selon le cas. Tous les autres exemplaires originaux sont filmés en commençant par la première page qui comporte une empreinte d'impression ou d'illustration et en terminant par la dernière page qui comporte une telle empreinte.

Un des symboles suivants apparaîtra sur la dernière image de chaque microfiche, selon le cas: le symbole \rightarrow signifie "A SUIVRE", le symbole ∇ signifie "FIN".

Les cartes, planches, tableaux, etc., peuvent être filmés à des taux de réduction différents. Lorsque le document est trop grand pour être reproduit en un seul cliché, il est filmé à partir de l'angle supérieur gauche, de gauche à droite, et de haut en bas, en prenant le nombre d'images nécessaire. Les diagrammes suivants illustrent la méthode.



MICROCOPY RESOLUTION TEST CHART
NATIONAL BUREAU OF STANDARDS
STANDARD REFERENCE MATERIAL 1010a
(ANSI and ISO TEST CHART No. 2)

THE RECONSTRUCTION PERIOD

VACANT FACTORIES

are listed with

HEATON'S AGENCY

The Factory Clearing House

Manufacturers can obtain reliable information as to suitable location, and complete information about vacant factories. Plans, photographs, etc., on file. Correspondence invited.

HEATON'S AGENCY - - TORONTO

Opportunities in Ontario

1919

Containing Extracts from
Heaton's Handbooks of Canadian Resources



Pamph
1919
no. 119

The Canadian Provincial Booklets
Heaton's Agency, Toronto

Copyright, Canada, by Ernest Heaton, 1919.

Printed in Canada

ONTARIO

The Land of Opportunity

Advice and Full Information may be had

In Canada from

H. A. MACDONELL

Director of Colonization

PARLIAMENT BUILDINGS - TORONTO

In Europe from

BRIG.-GEN. R. M. SIMS, C.M.G., D.S.O.

Agent-General for Ontario

163 STRAND, LONDON, W.C., ENGLAND

G. H. FERGUSON

Minister of Lands, Forests and Mines

Opportunities in Ontario

Agriculture

BEEKEEPING. The Dominion census of 1911 gives the province a total of 124,237 colonies. This census however only took account of bees owned on farms and as there are a number of persons making their living from beekeeping and residing in towns and cities the total number of colonies is much greater than the census shows, being estimated at about 300,000. The majority of bees are wintered on their summer stands with special protection, those not so wintered being placed in cellars. Small apiaries of from 20 to 50 colonies on farms, properly cared for, give good returns, and specialists keeping from 200 to 500 colonies make a good living from bees. Numbers of farmers' wives and daughters make good money from a few hives. The Ontario Beekeepers' Association has about 1,250 members. According to the latest available returns the annual output is approximately 2,200,000 lbs. from about 24,000 colonies.

GOVERNMENT ASSISTANCE. Winter and summer schools in beekeeping are held at the Agricultural College, and the subject is taught in the Agricultural Short Courses throughout the province. The Provincial apiarist lectures to the students, conducts experiments and generally gives advice to beekeepers.

DAIRYING. The annual output of cheese, butter, condensed milk and milk powder, together with the milk and cream used for city trade, amounts to about sixty-five million dollars. Increasingly large quantities of milk and cream are being shipped to large centres, and ice cream absorbs an increasing quantity of cream. There is a marked improvement in dairy cattle, and the average production per cow has considerably increased during the past few years. This is due to appeals on part of lecturers and the agricultural press, the work of cow-testing associations, special dairy meetings, etc. Jersey, Ayrshire and Holstein are the leading dairy

breeds, with the milking Shorthorns gaining in prominence in some sections of the Province.

GOVERNMENT ASSISTANCE. The province supports 2 dairy schools, one at Kingston and one at Guelph, where cheese and butter-makers receive a thorough training in the theory and practice of butter and cheese making. Thirty-one instructors are employed to visit the factories and creameries throughout the season of manufacture and instruct the makers in up-to-date methods. A high standard of quality and uniformity has thus been established in Ontario cheese, and Ontario butter has commanded high prices in the home markets.

Butter. While a considerable quantity of butter is manufactured on the farm, the number of creameries, especially in the large centres of population is rapidly increasing. Over 25,000,000 pounds of butter valued at \$10,000,000 were manufactured in Ontario by 172 creameries, during 1917.

Cheese. Ontario produces more than half the cheese manufactured in Canada, and exports in large quantities to Great Britain. The output of 980 Ontario cheese factories for 1917 was 120,000,000 lbs., valued at \$25,000,000.

Condensed Milk. There are 8 factories manufacturing condensed milk.

POWDERED MILK. This industry is advancing in Western Ontario. There are now 4 factories which have absorbed several cheese factories.

FARM VALUES.

	1901	1916
Land.....	\$585,354,294	\$794,676,866
Buildings.....	226,575,228	357,313,850
Implements.....	59,897,513	98,020,295
Live Stock.....	129,496,261	263,869,539
	<hr/>	<hr/>
	\$1,001,323,296	\$1,513,880,550

FLAX. In 1915, Ontario had 4,000 acres in flax; in 1916, 5,200; in 1917, 7,372; in 1918, 15,925 acres. Following the visit of Commissioners from the War Office in 1918 to procure flax for the British aeroplanes the Provincial Government acquired idle land near Toronto to cultivate flax for demonstration purposes.

Linseed Oil. There are large oil mills in Western Ontario, the flax seed being obtained from the Prairie Provinces. The quantity of oil produced varies from 15,000 to 20,000 barrels yearly, all marketed in the Dominion.

Linen and Fibre Manufacture. 33 flax mills are operated, and 1 linen mill at Guelph. Other mills are being equipped with linen machinery. With the development of new methods and machinery the industry promises to become permanent. Ontario water retted flax is considered equal to the best Irish.

FODDER CROPS. The area of pasture is about 3,082,671 acres. Write for pamphlet on Dairying to Department of Agriculture, Toronto. The figures quoted below are taken from the Dominion Government estimate.

Alfalfa (Lucerne) is grown more or less in practically every county, but chiefly in Haldimand, Lincoln, Welland, Brant and Lambton Counties. In some parts the production of alfalfa seed is becoming quite an industry.

Barley. Formerly grown for malting, now grown for feeding. In 1918 the crop was 10,375,500 bushels from 555,294 acres.

Clover. Red clover and alsike are grown extensively both for hay and for seed. Alfalfa or lucerne is being more extensively grown than formerly.

Hay. The area of hay is about 3,547,638 acres, yielding on an average 1.47 tons per acre, and nearly 2 tons in more favorable years. Hay forms in value about one-third of all the field crops.

Indian Corn. Most farmers grow a few acres of Indian corn which is stored in the silo. It grows from six to ten feet high. Crop averages 10 to 15 tons per acre, with occasionally much larger yields. Half of the corn produced is grown in the counties of Essex and Kent. It is used partly for distilling, partly for production of fat hogs.

Oats. Next to hay the most valuable field-crop, worth thirty-five to forty millions annually. In 1918, 456,733,900 bushels were harvested from 14,790,336 acres. Write for pamphlet on Dairying to Department of Agriculture, Toronto.

Peas. In 1918, 235,976 acres of peas were grown, yielding 4,384,700 bushels. Ontario peas are considered the best in the world.

Rye. In Europe is used extensively for bread, but in Canada principally as a feed for farm stock. In 1918 10,375,500 bushels of rye were grown on 555,294 acres. Average yield for past 35 years—16.5 bushels.

FRUIT GROWING. The total orchard acreage in 1913 was 306,787 acres; small fruits, 24,360 acres; vineyards, 11,136 acres. The bulk of the fruit is consumed by local consumption. The Western markets, for Ontario tender

fruits are of growing importance. Previous to the embargo of 1916 apples and pears to the value of several million dollars were exported to Great Britain. The industry is developing rapidly. It is estimated that \$30,000,000 is invested in the Ontario fruit industry. The Ontario Fruit Growers' Association, founded in Hamilton in 1859, has since 1904 held an annual show in Toronto.

EXPERIMENTAL FARM. An experimental fruit farm of 100 acres has been established in the Niagara District, one object being to develop varieties suitable for long shipment. The station is equipped with laboratories, greenhouses, cold storage, canning factory, packing houses, etc., and extensive commercial orchards for testing purposes.

CO-OPERATIVE ASSOCIATIONS. Over 50 Co-operative Fruit Growers' Associations do a good work in producing packing and marketing fruits.

JAM AND CANNING FACTORIES, ETC. Ontario has 33 jam and jelly factories, 117 fruit and vegetable canning factories, 53 cider mills, and 98 fruit evaporators, a total of over 300 factories utilizing the by-products of the fruit industry. The greater proportion of the canneries and jam and jelly factories are situated in the Niagara peninsula, the Essex peninsula, and in Prince Edward County. The cider mills and evaporators are fairly evenly distributed through the province.

APPLES. According to the Dominion Census of 1911, there were in Ontario 7,766,257 apple trees, with a total production of 6,305,462 bushels of fruit. These figures are low, as the year 1910 was one of comparative failure of the apple fruit. The province produces 60% of the total crop of apples in Canada. The bulk of the crop is sold within the Province. During the past 10 years Ontario has exported more apples to Great Britain than any other province or state on the continent. The Western Provinces take annually about 1,000,000 bushels. This market is growing. The principal commercial apples in order of ripening are: Duchess, Wealthy, Snow, Ribston-pippin, McIntosh, King, Greening, Baldwin, Golden Russett, Spy, Stark, Ben Davis.

Cherries. Sour (or pie) cherries are grown in all parts of Southern Ontario. Sweet cherries are grown commercially from the Niagara District to the Essex peninsula.

Grapes. The counties Lincoln, Wentworth and Welland produce 95% of grapes grown. In these counties there were, in 1916, 10,850 acres of vineyard. The vine begins to

bear at four years, and continues a lifetime. A grower in Niagara District estimates maintenance and profit per acre as follows: Cost of bringing into bearing, \$75; annual outlay when bearing (pruning and tying, cultivation, spraying three times, packing and packages), \$58.50. Average yield 3 tons, or 700 baskets, at average price, 15c. \$112.50. Net returns, \$54. Markets, Toronto, Hamilton, and other neighboring cities; Western and Eastern Provinces. Good grape land costs from \$80 to \$125 per acre. The Ontario Temperance Act was expected to hurt grape growers seriously by destroying the wine industry, which absorbed 700 cars of grapes annually, and used sour and unripe grapes. In 1918 Niagara grapes sold at \$60 a ton, a high record.

GRAPE JUICE. The bottling of unfermented grape juice has been started on a large scale. It is chiefly manufactured by E. D. Smith & Son, Winona, and Welch Grape Juice Co., St. Catharines, T. G. Bright Co., and The Marsh Grape Juice Co., Niagara Falls. Grape Juice requires a higher grade of fruit than the wine industry and it must be well matured and sweet.

WINE. It is estimated one-third of annual vintage is manufactured into wine. Approximate annual output, 275,000 gals. Chief varieties made: Dry Catawba, Sweet Catawba (a communion wine), Isabella, St. Augustine, Port, Sherry, Claret, Golden Diana, Rhine Wines, Champagne. Chief manufacturers: T. G. Bright & Co., Niagara Falls; Pelee Island Wine Co., Brantford; Hillrust Wine Mfg. Co., St. Catharines; Ontario Wine Co., St. Catharines; St. David's Wine Growers Co., Toronto; Niagara Falls Wine Co., Niagara Falls; S. Allen, Norwich; G. Girardot Wine Co., Sandwich; M. Guindon, Sandwich; La Compagnie Robinet Frères, Sandwich; A. Tournier, Sandwich; Marsh & Co., Sandwich. Market chiefly in Canada.

Peaches. Trees begin to bear in four years and should last 15 years. An expert peach grower estimates cost of maintenance and profit per acre as follows: Spraying, manuring, pruning and cultivation, \$28; picking, packing and packages, \$53; hauling to station, say \$5; total cost, \$86. Returns, 700 baskets (11 quarts), at 50c.—\$350. Net return, \$264. The average orchard will yield less than the above figures. The best varieties are the Yellow St. John, Crawford, Elberta and New Pacific. Peach trees 100 to the acre produce fruit when 4 years old and yield profitably till about the 15th year. Annual output about 2 million baskets of 11 quarts.

Melons. Large quantities of musk melons are shipped from Leamington to all parts of Canada. Other sections

grov. for local markets. A number of varieties of the Rockyford variety are cultivated.

Pears. Pears net the grower from \$65 to \$100 per acre. The Bartlett, Anjou, Duchess and other varieties are grown. Pears are exported to Great Britain. From the Burlington district about 1 million baskets are marketed in Ontario and Quebec.

Plums. The Burbank, Bradshaw, Monarch and Anjou are the leading varieties. The average net profit is \$40 to \$75 per acre. Over 300,000 baskets are grown annually.

Other Fruits. Cherries, strawberries, raspberries, blackberries, gooseberries and currants yield from \$60 or \$100 up to \$500 an acre in some cases. If the tree is well covered in winter, figs will ripen in the Niagara District. Citrons do well in Southern Ontario. Watermelons do well, but the market is chiefly supplied from the U.S.

GRAIN CROPS. In 1918 the total yield and average yield per acre by bushels, as shown by the Dominion January estimate, was as follows:

	Area	Per Acre	Total Yield
Spring Wheat.....	351,423	23.00	8,082,700
Winter Wheat.....	362,616	16.50	5,983,200
Oats.....	2,924,468	40.00	116,978,700
Barley.....	660,404	35.00	23,114,100
Rye.....	112,726	19.00	2,141,800
Peas.....	113,662	20.75	2,362,600
Buckwheat.....	223,662	20.25	4,529,200
Mixed Grains.....	619,389	38.25	23,692,000
Corn for husking.....	156,310	29.00	5,664,000

LIVE STOCK. The value of the live stock on the farms has increased by over \$80,000,000 in the past ten years. Thirteen Associations hold co-operative sales of pure bred stock.

RANCHING. In Ontario, from a line drawn from Brockville to the mouth of the Severn River on Lake Huron, running north up to the National Transcontinental Railway, there lies an immense tract of practically waste rocky land covered with second growth timber, interlaced by lakes and streams, peat bogs and beaver meadows, with here and there a pocket of arable land. Recent successful experiments have shown that this land can be used for cattle ranching. In summer the cattle browse through the scrub and second growth trees free from flies. In winter open shelters are provided for use as required. Beyond this the cattle do not require housing or care, they feed around the hay-ricks and drink from dammed streams of running springs. In selecting a ranch the requisites are a never-freezing stream, beaver meadows

from which hay can be cut and a rocky shelter for the barns in winter. The ranch may also serve as a big game and fishing preserve. Write to The Burleigh Ranching Co., Burleigh P.O., Ont.

Cattle. Dominion returns for 1918 show that in Ontario there were 1,082,119 milch cows and 86,847 other cattle. For dairy cattle the Holstein, Ayrshire and Jersey are the favorites, yielding about one-third more milk than the corresponding grades. The Shorthorn has its champion especially as a dual purpose cow. For beef cattle the Shorthorn, Hereford and Polled Angus are most popular. There is a large export trade with the North-West. Large shipments are made from Toronto to Great Britain. The remission of the duty upon cattle exported to the United States has resulted in large purchases of Canadian animals by U.S. buyers. The consequent depletion of promising young stock is regarded with apprehension. There are fewer cattle in Ontario than there were 5 years ago, but there is a marked improvement in the quantity and the quality of the dairy stock.

Goats. There are very few good breeders. A number are kept as pets. Many milch goats could be kept in the towns and pleasure resorts. Angora goats would be useful for the production of mohair in North Ontario.

Horses. Ontario is the leading province for the breeding of horses. Numbers are shipped from the province in every direction every week. The Ontario Stallion Act provides for the enrolment of grade and pure-bred stallions, and for an annual inspection. The Act effectively prohibits the service of grade stallions subject to certain diseases and malformations. Motor cars notwithstanding, the demand is good. In 1918 there were 732,977 horses in the province.

Sheep. The climate and soil conditions of Ontario are particularly adapted to sheep raising. This has been demonstrated by Ontario breeders winning a large number of the prizes at the large American Expositions, such as the World's Fair at Chicago, the Pan-American at Buffalo, the Exposition at St. Louis, and the annual International Show at Chicago. According to Dominion returns for 1918 there were 972,341 sheep and lambs in the province. Of pure-bred sheep there are about 20,000 head in the province of the following breeds: Shropshire, Leicester, Oxford, Lincoln, Cotswold, Southdown, Dorset, Hampshire and Suffolk. The home consumption of mutton and lambs has greatly increased during the last few years. The American cities afford a profitable market for the surplus stock, especially if the animals are of high quality. The abolition of the duty on wool by the new U.S. Tariff Act will give an impetus to sheep breeding.

Wool. In 1913 wool sold at 12c. to 15c. per lb.; in 1914, at 20c.; in 1915, at 27c.; in 1916, at 32c., and in 1917, for the first time wool was sold co-operatively. Over 1,600 farmers made shipments to the winter fair building at Guelph where the wool was graded by an expert. Over 200,000 lbs. were sold and the price averaged over 60c. per lb.

Swine. Ontario cannot compete with the U.S. in the fat hog, because for competitive marketing it must be fed on large quantities of cheap corn, not here obtainable and Canada has comparatively little home demand for lard. The weight limits of the bacon hog are fixed at 160 to 200 lbs. live weight. Success depends upon close adherence to type by the farmer, buying on a quality basis and regular production each month. For the production of bacon the Yorkshire hog is considered best, though the Tamworth and Berkshire are also suitable. Pork factories are established at Toronto, Hamilton, Ingersoll, Stratford, Peterboro and Ottawa. From 1½ to 2 million hogs are annually slaughtered in the province. In 1918 there were 1,656,386 swine in the province.

MAPLE SUGAR AND SYRUP. The average annual sugar output of Canada was about 19,600,000 lbs. during the decade 1901-'911; of this, Ontario contributed 5,000,000 lbs. The average selling price has been about 10 cents per lb. Canada supplies three-sevenths of the world's output. The trees are generally tapped in the latter part of March and April. Moderately warm days followed by freezing nights are ideal conditions to promote flow. Seasons vary, but the cost of fitting up a modern sugar camp is a paying investment even at low market prices. A stringent Act has been passed by the Dominion Government to prevent adulterated imitations. Maple sugar is found on the Royal Table and in most hotels and large stores in London.

BY-PRODUCTS. As by-products in the manufacture of syrup there can be obtained a very good vinegar, malic acid and bi-malate of lime, the best known acid constituent of baking powder.

POULTRY. The farmers of the province are each year realizing more and more the large profits that may be made from a flock of poultry. A large number of poultry associations have been organized throughout the province for the purpose of raising the standard of poultry breeding, and the Provincial Government is helping this object by the distribution of pure-bred eggs for hatching, to the rural schools. Ontario breeders have for many years been winning a large number of the principal prizes at the leading American Shows. At the Provincial Winter Fair

held at Guelph, Ontario, each December, there is one of the greatest annual poultry shows on the continent. Last year there were over 5,000 entries. Large quantities of poultry and eggs are shipped to the markets of Great Britain.

EGG CIRCLES have been established in some districts for the stimulation of production and efficient handling. By this means the farmer has been enabled to secure from 2c. to 6c. per dozen more for his eggs. Outside of egg circles the growing tendency of dealers is to buy eggs on a quality basis.

ROOTS AND VEGETABLES. About 350,000 acres are devoted to root crops. The production of early vegetables under glass is increasing, especially near Toronto, Hamilton and in Essex County. Large tracts of market lands near the large cities have been taken up lately for city lots and the present growers cannot fill the demand. Around Toronto there are over 1,000 vegetable gardens, averaging 7 to 8 acres each.

DESSICATED VEGETABLES. This industry has been greatly stimulated by the war. R. J. Graham Co., Belleville, have been handling contracts for the British and French War Offices, particularly in dried potatoes and Julienne (mixed dried vegetables). This is said to be the largest establishment of the kind on the continent.

Beans. Wax (butter) beans are commonly grown for local markets. Pole (French) beans do not thrive, owing to the climate. Field beans are grown in all countries, the greatest acreages are in Kent, Huron, Elgin, Welland, Middlesex and Norfolk Counties. The varieties grown are white- and red-shelled beans. Soya beans have not been extensively grown.

Celery. The demand is practically unlimited. The largest celery-growing district is at Thedford (Lambton Co.) where over 70 acres are grown every year.

Lettuce is a most popular and extensively-grown crop.

Mangolds. Of all the root crops, mangolds show the largest increase in the past 30 years. The market value of the crop is now about 2½ million dollars.

Onions. The total acreage planted is over 1,000 acres. Average yield about 450 bushels per acre, chiefly the yellow variety, although large quantities of red are grown in Eastern Ontario. Leamington district is noted for onions. Around Hensall many acres are planted in onion sets which are shipped to all parts of Canada. Importations from Egypt, Bermuda and Spain

are large. From the U.S., about 78,000 bushels are imported annually over export trade.

Potatoes. The best potato growers average over \$100 per acre. Toronto alone consumes over 3,000 90-lb. bags per day, and other cities in proportion. There are great opportunities, for the demand far outdistances the local supply. An average crop is 200 bushels per acre. Potatoes are grown in every county and many parts of New Ontario produce excellent crops. Six co-operative associations have been formed for handling potatoes: 1 in Wellington, 2 in Lambton Co., 2 in Nipissing, and 1 in Rainy River District.

Pumpkins are grown commonly as a companion crop for corn. There is an increasing demand for canning purposes.

Radishes. Grown in most vegetable gardens. The Ojibwa District in Essex County is famous for its large acreage of radishes, which are marketed in nearby cities of the State of Michigan.

Sugar Beets. The sugar beet industry started in 1901, with 4 factories, 2 lapsed while gaining experience. The Dominion Sugar Co. now owns factories at Chatham, Wallaceburg and Kitchener, the only factories in Ontario. The farmer's net profits per acre are estimated at from \$35 to \$100 in exceptional cases. Prices paid growers have increased from \$3.50 to \$5.50 per ton. The finest quality of sugar is manufactured. No crop so effectually cleans the land or so well fits it for barley, oats or wheat. The average sugar content of Ontario beets is 12%.

BY-PRODUCTS. The tops are rich in fertilizing contents, are plowed into the soil, and sometimes fed green or as silage. Beet pulp is dried and sold as stock feed: it contains about 5% of sugar and is very beneficial for milch cows. A limited amount has been fed fresh to stock near the factories. The lime used in manufacturing sugar is at present wasted. The molasses is burned to potash.

Tomatoes. Average yield is 250 bushels per acre. As high as 500 bushels has been reached. Large quantities are grown for canning factories in Prince Edward County and the Niagara district. Leamington annually ships early tomatoes as far west as Calgary and east to Halifax.

Other Vegetables and Roots. Asparagus, cabbage, cauliflower, cucumbers, peas and rhubarb find a ready market in the canning factories. Cabbage average ten tons per acre, cucumbers (small) 5 tons; mangolds, 432 bushels; carrots, 254 bushels; turnips, 394 bushels;

artichokes are grown to a limited extent; beets do well generally; brussels sprouts are easily grown in S. Ontario; sweet corn is grown very largely by all vegetable growers; egg plant succeeds where late and early frosts are not prevalent; parsnips are an important crop; peppers are grown in some counties for local markets and for pickling; rhubarb is found on nearly every farm; salsify (vegetable oyster) is hardy and used by many; spinach is grown almost entirely for greens; squash is grown with corn.

TOBACCO. Is grown in the Counties of Essex and in Pelee Island, Kent, Prince Edward, Elgin and Lincoln. The total crop in 1917 is estimated at 3,495,000 lbs. from 2,930 acres. The Burley variety, suitable for chewing, is grown in 5 counties. Seed Leaf in Essex County; Snuff in Kent County; and Conn. Havana in Lincoln County. Maryland tobacco has been introduced into Prince Edward County with some success. During the last few years the growing of bright tobacco (fine cured) has extended rapidly, invading the light sandy loams near the shores of Lake Ontario and some gravelly hills with good drainage. The annual production of this variety is nearly 1,000,000 lbs. with the demand yearly increasing. A limited amount of Seed Leaf and Fire cured leaf of the heaviest type is grown under contract. During the last few years the cultivation of White Burley has notably decreased owing to adverse climatic conditions and very keen competition from other crops, especially those connected with the canning industry. It requires a long summer and good fall. Cost of cultivation, including labor of grower, is estimated at \$50 to \$75 per acre. Average yield about 1,300 lbs. per acre. The Dominion Government have an Experimental Farm in Essex County.

Agricultural Districts

The statistics in the following descriptions are taken from the latest Provincial Government Reports.

FRUIT DISTRICTS. The commercial cultivation of peaches and grapes extends from Hamilton on Lake Ontario through the Niagara District to the Niagara River, thence westerly along Lake Erie, Lake St. Clair, the southern part of Lake Huron, a district embracing nine counties and over 300 miles in length. Pear and plum orchards are found everywhere in the counties bordering on the Great Lakes and the Georgian Bay. The belt in which apples and berries are grown for market extends 400 miles east and west and 50 to 150 miles north from the southern boundary.

IMPROVED FARMS. Fifty to a hundred acres can be purchased in the older portions of Ontario at from \$30 to \$100 per acre, the larger price including cost of buildings.

—List of Farms for sale may be had on application to the Director of Colonization, at the Parliament Buildings, Toronto.

South-Western Ontario

SOUTH-WESTERN ONTARIO is bounded on the north by Lake Huron and the Georgian Bay; on the west by the St. Clair River, Lake St. Clair and the Detroit River; on the south by Lake Erie; on the east by the East boundary of the County of York and Lake Simcoe. The climate is modified by the proximity to the Great Lakes, and is well adapted to fruit culture. It is the most southerly and most thickly populated section, and includes the following Counties:

- (a) **ON LAKE ERIE**—Elgin, Essex, Haldimand, Kent, Norfolk and Welland.
- (b) **ON LAKE HURON AND GEORGIAN BAY**—Huron, Lambton, Bruce, Grey, Simcoe.
- (c) **ON LAKE ONTARIO**—Halton, Lincoln, Peel, Wentworth and York.
- (d) **IN CENTRE**—Brant, Dufferin, Middlesex, Oxford, Perth, Waterloo and Wellington.

Govt. Hydro-Elec. Power and Light is being used at some points in practically every county in South-Western Ontario. For particulars see *Heslop's Annual*.

BRANT CO. Generally undulating to hilly. Soil in centre and west sandy to clay loam, with gravelly sub-soil; in east heavy clay. Watered by Nith, Grand and Whiteman Rivers and small creeks. Mixed farming, dairying and beef raising. Leading crops, wheat, oats, barley, corn, potatoes, onions (as a staple crop), and other roots. Over 4,000 acres of apple orchards. 6 cheese factories, 5 creameries, 2 canneries. Local markets at Brantford, Galt, Paris, St. George, Burford, etc. Farms cost \$40 to \$125 per acre. Pop. 19,250—Scotch, English, Irish and some Penn. Dutch.

BRUCE CO. Land is rolling. Soil, 6 in. mostly good clay loam, part sandy and heavy clay; subsoil of limestone in parts, clay in others. Watered by 3 rivers and many creeks. Wells 20 to 100 ft. Served by G.T.R., C.P.R. and branches. Mixed farming; some districts devoted to fruit, others to beef, cattle and grain. 5 cheese factories, 9 creameries. Water power in all sections supplying towns with electric light and power. Heavy woods and good hunting in north. Farms cost \$40 to \$110 per acre. Pop. 50,032—Irish, German, Scotch and English.

DUFFERIN CO. In east part rolling, hilly and dry; in west, flat, swampy in parts. Soil, sandy loam and clay loam; sandy subsoil. Wells 20 to 100 ft. Served by C.P.R. (2 branches) and G.T.R. Mixed farming. 2 cheese factories, 2 creameries. Local markets at Shelburne, Orangeville and Grand Valley. Farms cost \$30 to \$100 per acre. Pop. 17,740—British.

ELGIN CO. On Lake Erie. Fairly flat. Soil, sandy and clay loam; subsoil, clay. Wells 20 to 100 ft. Good roads, 6 lines of railway. Hydro-elec. power from Niagara used by many farmers for light and power. Fruit growing includes apples, peaches, cherries, plums, melons, small fruits. Dairying well developed; annual milk production over \$2,000,000; 16 cheese factories, 7 creameries. Field crops include beans, peas, corn, all grains, hay and alfalfa. Tobacco successfully cultivated. Chief centres, St. Thomas and villages of Rodney, West Lorne, Dutton and Aylmer. Summer resort at Port Stanley. Farms average \$120. Pop. 44,312—Scotch, Irish and English.

ESSEX CO. Between Lakes Erie and St. Clair. Most southerly portion of Ontario. Slightly rolling at south; elsewhere flat, with a slight ridge running n. and s. Soil, generally clay loam, with clay sub-soil: well drained and

on ridges sandy loam, with gravelly subsoil, suitable for peaches. At base of Point Pelee, near Leamington, are 2,800 acres of reclaimed marsh land, with black muck, 1 to 10 ft., and clay subsoil. Well watered with rivers, creeks and some artesian wells. Served by C.P.R. main line, M.C.R., Pere Marquette and Wabash Rys., and 3 elec. lines. Lake steamers call at Windsor, Kingsville and Leamington. Natural gas in common use. Climate is free from early and late frosts. Leading crops are corn, oats, tobacco, winter wheat, hogs, sugar beets, peaches, apples, tomatoes, cucumbers, onions, the famous Petite Cote radishes and hot-house vegetables. 4 creameries. Average price of land per acre: Good peach land, \$125 to \$150; peach land in bearing, \$500; apple land, about \$100; corn land, \$65 up; vegetable land, from \$100 to \$500; sugar beet land, \$65 up; tobacco land, \$100 up; mixed farming land, \$70 to \$125. Pop. 67,500—British and French.

GREY CO. Rolling, flat in parts. Soil chiefly clay loam, subsoil varies. Watered by springs and creeks; wells 70 ft. Mixed farming and fruit. 7 creameries. Served by C.P.R., G.T.R. and Lake S.S. Line. Famous for Northern Spy apples. Hydro-electric power from Eugenia Falls. Local markets at Owen Sound, Meaford, Hanover, Durham, etc. Farms average \$75 per acre. Pop. 66,000—English, Irish, Scotch.

HALDIMAND CO. Mostly rolling, one-third flat, 12,500 acres marshy, balance fairly dry. Soil, generally very fertile, mostly clay loam, 7 inches; about 18,000 acres black loam, 8 to 9 inches, with hard clay subsoil. Wells, 40 ft. Served by G.T.R., N.C.R., Wabash Ry. Grain and dairy farming. 2 cheese, 8 butter and 1 combination factories. Leading crops: Alfalfa, red clover, alsike and blue grass largely grown for seed; wheat, oats, barley, hogs. Live stock is marketed at Buffalo and Toronto, dairy produce at Toronto and Hamilton. Local markets at Dunnville, Caledonia and Hagersville. 2 active gypsum mines. Beautiful scenery along Grand River and lake front. Farms average \$85 per acre. Pop. 21,560—German, Irish and English.

HALTON CO. On Lake Ontario. Flat from lake for 2 miles, to an escarpment; on the e. generally rolling; on the w. hilly. Soil to north, sandy loam; in centre to escarpment, clay loam to heavy clay; between escarpment and lake, sandy to sandy loam. Running n. and s. is a range of low clay hills used for brick and terra cotta. Well watered by Grand River and numerous streams. Wells average 25 ft. Served by G.T.R. main line and branches, and C.P.R.; Electric Ry. to Hamilton. Cement road from Toronto to Hamilton.

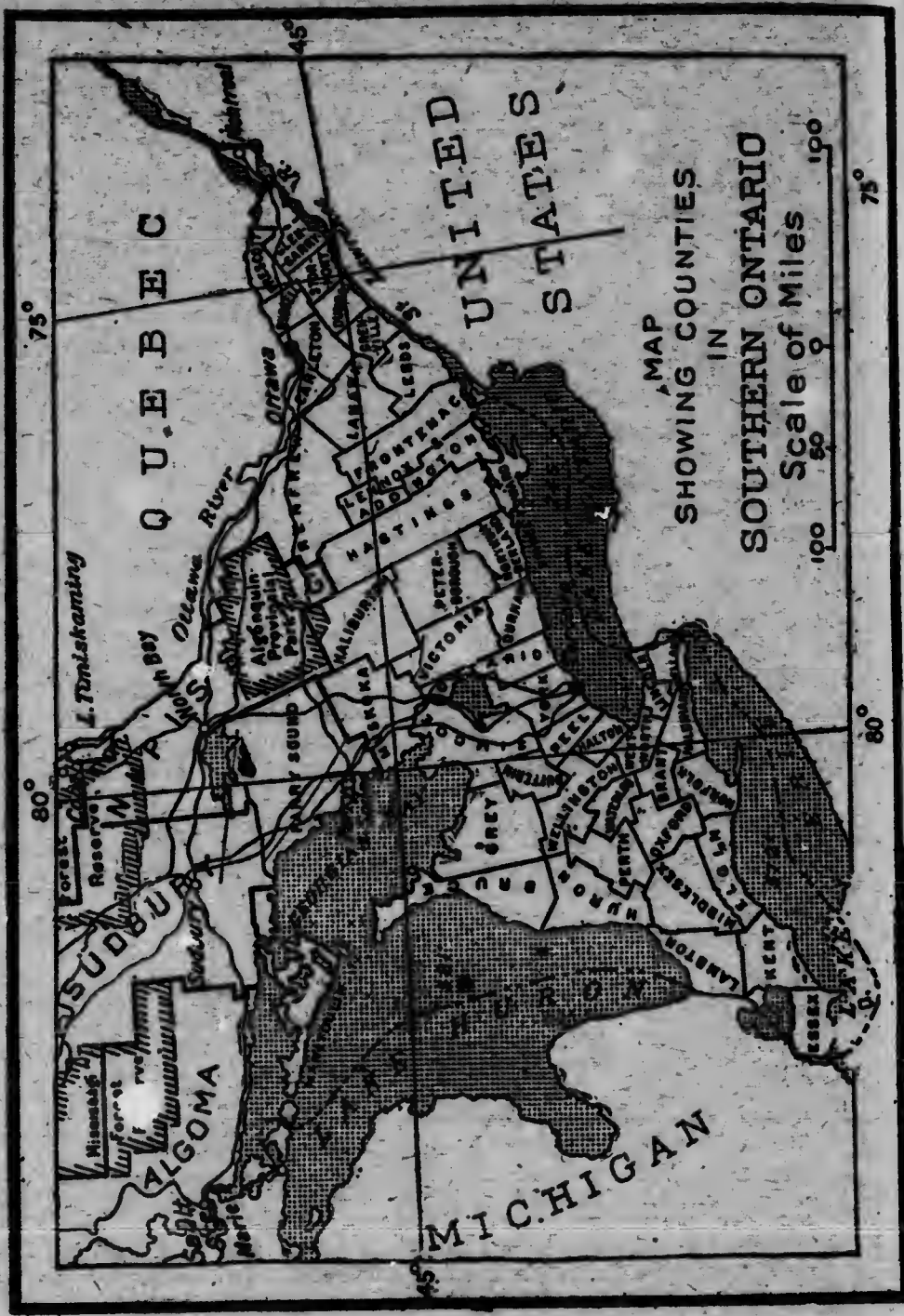
Southern part devoted to fruit farming; mixed farming to the north. 1 creamery, 2 canneries. Farms average \$100 per acre. Pop. 22,200—English, Scotch, Irish, a few Indians.

HURON CO. Undulating to comparatively level. About 85% cultivated. Soil deep rich clay loam, occasional sandy loam near lake. Subsoil deep clay mixed in places with limestone gravel. Watered by Maitland, Bayfield and Aux Sauble rivers. Served by C.P.R. (2 lines), G.T.R. (2 lines), and very good roads. Leading crops wheat, oats, barley, peas, corn, timothy, alfalfa, flax, roots, white beans (40 bus. per acre), onions (125 bus. per acre). Noted for heavy horses and beef and dairy cattle. Hog raising, and poultry industry are profitable. 5 cheese factories, 10 creameries. Apples, pears, peaches, plums, cherries, grapes and small fruit grow to perfection. Local markets at Goderich, Brussels, Blyth, Clinton, Exeter, Seaforth, Wingham, etc. Lake Huron (60 m. frontage) tempers climate nearby. Farms cost \$40 to \$100 per acre. Pop. 52,983—British stock, Germans in some townships, a few French.

NOTE—The Climate on e. shore of Lake Huron from April to November is unequalled in the world. Prevailing n.w. winds cross lakes Superior, Michigan and Huron and are wonderfully soft and invigorating. Nowhere do similar conditions exist.

KENT CO.—Mostly flat, a little marshy ground in Dover, Tilbury and Chatham Townships. An elevated ridge runs along Lake Erie, where all kinds of fruits and vegetables do well. Soil varies, sandy to black loam and clay. Sub-soil of various kinds. Good water supply from numerous springs and artesian wells, 60 to 140 ft. Natural gas is largely used. Good local markets. Served by M.C.R., P.M.R., G.T.R., C.P.R. and Elec. Ry. Corn averages 100 to 180 bush.; wheat averages 25 bush.; oats, 50 to 75 bush.; barley, 50 bush.; roots, 10 to 20 tons. Beans, tobacco, sugar beets and all kinds of fruits are grown. 7 creameries. Farms cost \$50 to \$150 per acre. Pop. 55,995—English, Scotch, Irish, French and a few Germans.

LAMBTON CO. At the s. end of Lake Huron. Generally level. Watered by a number of streams. Soil in n. varies from a loam with gravelly subsoil to straight sand and gravel; in s., a deep, heavy clay loam. Served by G.T.R., M.C.R. and P.M.R., with branches. Mild winters owing to influence of Lake Huron to the n. Apples, peaches, grapes and tender fruits are grown commercially, also corn, sugar beets and beans. 3



MAP
SHOWING COUNTIES
IN
SOUTHERN ONTARIO
Scale of Miles 100 50 0

cheese, 8 butter, 2 combination factories. Good markets at Sarnia, London and other large towns. Farms average \$60 per acre. Pop. 51,332—mostly British.

MIDDLESEX CO. Fairly level with a little marsh. Watered by Thames River and small streams. Soil uniformly good, varies from deep clay loam, producing grain, to sandy soil suitable for corn, fruit and vegetables. Served by C.P.R., G.T.R., M.C.R., P.M.R. and Wabash Ry., and 2 electric lines. Good roads, telephones and rural mail delivery. Many horses, sheep, beef and dairy cattle, also hogs and poultry are raised. 23 cheese, 8 butter and 2 combination factories. Apples and all kinds of small fruits and vegetables thrive. Bee-keeping is carried on extensively. Caradoc Tp. is a great potato growing section. Around Ailsa Craig and Parkhill is a famous beef growing section. There are several fox ranches. Good local markets at London, Strathroy, Parkhill, etc. Farms average \$75 per acre. Pop. (excluding London) 50,765—mostly British.

NIAGARA DISTRICT includes parts of the Counties of Welland, Lincoln and Wentworth. Lies along the s.w. shore of Lake Ontario, extending from Niagara to Hamilton, 44 miles. It varies in width from 1 mile at Hamilton to 14 miles from Niagara Falls to the mouth of the river. Winters mild owing to the low altitude above sea level (320 to 350 ft.), the shelter of the escarpment, which runs from end to end of the district, and the influence of Lake Ontario, open all the year round. About 12,000 acres are planted to grapes; 3,000 acres to apples and pears; 11,000 acres to peaches; 1,500 acres to plums and 3,000 acres to other fruits. About 50,000 acres of fruit land as yet unplanted. Served by the G.T.R., T.H. & B. Ry. elec. railways from Hamilton to Grimsby, and from St. Catharines to Port Dalhousie, Niagara and Niagara Falls, and a good auto road from Queenston and Niagara to Hamilton. S.S. connections with Toronto at Hamilton, Grimsby, Port Dalhousie and Niagara-on-the-Lake. The Ontario Government has an experimental farm at Vine-land. All fruits are successfully marketed in the Northwest and apples and pears in Europe. Peaches have been shipped to Great Britain. One-third of the grape crop is made into grape juice and wine. Total output of fruit in 1915 was valued at over 5½ million dollars. There are 3 co-operative fruit growers' associations. In the 3 counties there are 2 cheese and 11 butter factories, several jam, grape juice, wine and canning factories. Peach orchards in bearing cost according to age, from \$400 to \$1,000; apple orchards

\$300 to \$500; vineyards, \$150 to \$300; unplanted land, sandy loam with clay subsoil suitable for peaches, \$300 to \$400; unplanted apple land, \$100 to \$150; unplanted land suitable for grapes, \$100 to \$200 per acre. Social conditions are ideal. Pop. of 3 counties, Lincoln, 35,429; Welland, 42,163; Wentworth (excluding Hamilton, 101,344 in 1916) 34,634. Chiefly British, some Germans, a few Dutch.

NORFOLK CO. Undulating. Soil is similar to that in Niagara peach belt, sandy loam, some clay loam, generally clay or gravelly subsoil. Watered by numerous streams. Served by G.T.R. (3 lines), Wabash Ry., Michigan Central, T.H. & B. Ry. Leading products, apples, some peaches, strawberries, small fruits, clover seed, vegetables, especially cucumbers, peppers, cauliflowers, etc., for local pickle factories and canneries. 8 cheese, 6 butter factories. Markets at St. Thomas, London, Wodstock, Simcoe, Brantford, Hamilton, Toronto all within 85 miles. The Norfolk County Fruit Growers' Association has over 400 members. Chestnut, oak and pine are the prevailing commercial timber. Natural gas throughout the county. On shores of Lake Erie are 2 famous duck and snipe preserves and good bass fishing. Farms cost \$50 to \$150 per acre; bearing apple and peach orchards, \$300 to \$500. Pop. 27,100—British.

OXFORD CO. Mostly rolling, hilly in parts. Soil mostly clay loam with gravelly subsoil. S. Norwich Tp. inclined to be sandy. Hydro-Elec. power commonly used for light and power on farms. Served by G.T.R., C.P.R. and several elec. lines. Leading products, milk, butter, cheese, milk powder, clover, hay, corn, oats, wheat, barley, apples, hogs, beef and heavy horses. Produces more milk to the acre than any other county. 23 cheese factories, several co-operative farmers' clubs. 4 creameries, 12 combination factories. Farms average \$40 per acre. Pop. 47,371—all of British or German descent.

PEEL CO. On Lake Huron. Land hilly in North, comparatively flat in south. Soil, sandy along lake shore, fairly heavy clay in one township; clay loam and sandy loam in north. Watered by Credit, Etobicoke and Humber Rivers. Wells from a few ft. to 200 ft. Served by G.T.R., C.P.R., 2 elec. railways and good roads. Fruit-growing in south, dairying in Tor. and Ching Tps. Potato growing in north. Markets at Toronto, Bolton and Brampton. Farms cost \$70 to \$100 per acre. Pop. 22,102—Scotch and English.

PERTH CO. Rolling in south, level towards north. Soil, sandy loam, black loam and clay loam. Subsoil clay with small areas of gravel. Watered by springs and creeks; wells 25 to 170 ft. Served by G.T.R., C.P.R. Good gravel roads. Leading crops, fall wheat, oats, barley, hay, silo corn. Apples, pears and plums are grown. Dairying, beef raising, sheep and swine. 17 cheese, 8 butter, 6 combination factories. Farmers' clubs for buying and selling. Northeasthope is a well known sheep section. Local markets at Stratford, St. Mary's, Listowel, Mitchell, Milverton, Tavistock. Pop. 49,182—English, Irish, Scotch and German.

SIMCOE CO. Between Lake Simcoe and Georgian Bay. Mostly rolling; western section hilly, Floss Tp. flat. Soil mostly clay loam, sandy in centre. Subsoil mostly gravelly, stiff clay in parts. Well watered by streams; wells 10 to over 100 ft. Mixed farming with potato growing prominent in some parts, and fruit growing on Georgian Bay. Leading products: fall wheat, barley, oats, potatoes, apples, live stock, poultry. 3 creameries. Served by G.T.R. and C.P.R. Good lake transportation. Nottawasaga apples have won highest prizes at many exhibitions. Local markets at Collingwood, Barrie, Orillia, Midland, Penetang, Alliston, Stayner. Summer resorts on Lake Simcoe and Georgian Bay. Farms cost about \$75 per acre. Pop. 85,053—all of British descent.

WATERLOO CO. Rolling. Soil, gravelly loam and clay loam, with subsoil mostly gravelly. Watered by Grand and Nith Rivers, and springs; wells, 50 to 200 ft. A great beef cattle district. Served by C.P.R., G.T.R., and 2 elec. lines. Mixed farming and dairying near larger towns. 2 cheese and 5 butter factories. Local markets at Galt, Kitchener, Waterloo, Preston, Hespeler, Elmira, New Hamburg. Farms cost \$60 to \$100 per acre. Pop., urban, 62,607—Penn. Dutch, Mennonites, Germans and Scotch.

WELLINGTON CO. Area, approx. 652,578 acres. Mostly rolling with 2 or 3 townships quite flat. Soil varies from sandy loam to heavy clay. The Grand, Speed, Connestoga and Maitland Rivers find a source here. Wells from 25 to 200 ft. From main lines C.P.R. and G.T.R. crossing south end branches run north and south. Mixed farming with leading crops oats, turnips, potatoes, hay, flax. A famous live stock district. At Guelph Winter Fair, half of fat stock prizes for Herefords, Shorthorns and Angus Cattle were won by Wellington Co. farmers. 6 creameries, 2 combined factories butter and cheese. Most of milk is marketed in cities.

Chief towns: Guelph, 18,000; Fergus, 2,000; Elora, 2,000; Mt. Forest, 2,000; Palmerston, 2,000; Harriston, 1,500. Farms average \$30 to \$100 per acre. Pop. 55,646—English, Irish, Scotch and Germans.

YORK CO. Mostly rolling, some level land in south, some marshy in north. Soil, mostly clay loam, some sand and some very heavy clay, $\frac{1}{2}$ ft. Subsoil mostly clay, some gravel. Well watered with springs; wells, some artesian, others 15 to over 200 ft. In south, dairying, market gardens, poultry and fruit, marketed in Toronto; grain growing to north. 9 creameries. Served by C.P.R., G.T.R., C.N.R. and several elec. lines. Farms average \$100 per acre. Pop. (including part of Toronto suburbs) 116,521—English, Scotch; Irish and Dutch.

South-Eastern Ontario

SOUTH-EASTERN ONTARIO. Is bounded on the north by the Ottawa River, on the south by Lake Ontario and River St. Lawrence, and includes the following Counties:

- (a) ON LAKE ONTARIO—Durham, Frontenac, Hastings, Lennox and Addington, Northumberland, Ontario and Prince Edward.
- (b) ON ST. LAWRENCE RIVER—Dundas, Glengarry, Grenville, Leeds and Stormont.
- (c) ON THE OTTAWA RIVER—Carleton, Lanark, Prescott, Renfrew and Russell.
- (d) IN CENTRE—Victoria, Peterborough and Haliburton District.

†Government hydro-elec. power is being used at some points.

†**DURHAM CO.** Mostly rolling. Soil, clay and sandy loam. A strip 1 to 7 miles wide of blow sand runs through county. Watered by several streams. Served by G.T.R., C.P.R. and C.N.R. Apple growing and dairying on lake front. Mixed farming and beef raising in other parts. 2 creameries, 2 cheese factories. Farms average \$60 to \$150 per acre. Pop. 26,411.

FRONTENAC CO. Land is rolling, about 40% rocky, 5% marshy, 55% tillable and pasture. Soil, chiefly clay loam and sandy loam, 2 to 3 feet. Well watered; wells 12 to 80 feet. Mixed farming, dairying predominates. Leading products: Ensilage, corn, oats, barley, hay, roots, cheese, bacon. 51 cheese, 15 combination factories. Rocky areas are dotted with small

lakes. Good fishing. Feldspar, mica and lead mines. Farms cost \$20 to \$70 per acre. Pop. 21,944—British, Penn. Dutch, a few Germans and Norwegians.

†**HASTINGS CO.** Mostly rolling. Soil mostly sandy loam, some clay, clay loam and sand. Well watered by springs and creeks. Wells 30 to 200 ft. Served by G.T.R., C.P.R. and C.N.R. Leading products: Cheese, hogs, dairy cattle, apples, wheat and rye. 76 cheese factories, 2 creameries, 4 canneries. Local markets at Belleville, Deseronto, Trenton and villages. Elec. power from Trent and Moira Rivers. Farms average \$50 to \$100 per acre. Pop. 40,366—all of British descent.

LENNOX & ADDINGTON COS. Gently rolling, with valleys running e. and w., some of which are farmed, others are stoney and used as pastures. Many natural springs. Good wells, 6 to 20 ft. Served by C.P.R., G.T.R. and C.N.R. Farmers chiefly engaged in dairying and hog raising. Grain is fed to stock. Good poultry section. 27 cheese, 3 combination factories, 2 canneries. Good retail markets at Belleville and Kingston; wholesale at Toronto, Montreal and Ottawa. Farms cost \$40 to \$100 per acre. Pop. 20,386—all English-speaking.

†**NORTHUMBERLAND CO.** On Lake Ontario. Level along lake, rises rapidly 3 miles back. Intervening district to Rice Lake is composed of hills and valleys. Many springs and streams; wells 10 to 20 ft. Served by G.T.R., C.P.R., C.N.R. and Trent Valley Canal. Leading products: Wheat, oats, barley, rye, corn, and, in some parts, potatoes; along lake shore, apples, vegetables and canning crops. 37 cheese factories, 1 creamery. Local markets at Cobourg, Czmpbellford and Trenton. Picturesque scenery and summer resorts. Farms cost \$50 to \$100 per acre. Pop. 32,992—chiefly Brit.

THE OTTAWA VALLEY, on south bank of Ottawa River, includes parts of the Counties of Prescott, Russell, Carleton, Lanark and Renfrew. Served by G.T.R., C.P.R., C.N.R. and N.Y.C. Rys., navigation on Ottawa River and Rideau Canal. Watered also by several smaller rivers. Fine scenery. Good dairying section. The 5 counties have 220 cheese, 7 butter, 20 combination cheese and butter factories. Apple growing extends from L'Orignal on e. to Pembroke on w.; leading varieties are yellow transparent, Duchess, Wealthy, MacIntosh. Cities of Ottawa and Montreal provide large local markets. Farms cost from \$30 to \$200 per acre near Ottawa. Pop. of 5 Counties (excluding Ot-

tawa City, 100,000), 176,512—Scotch, English, Irish, French Canadians and Poles.

CARLETON Co. Generally rolling, a few hilly sections, several flat areas. Soil generally of clay loam with sandy areas. Wells 10 to 100 ft. Pop. (excluding Ottawa, 100,000) 28,406.

LANARK Co. Includes rolling, flat, dry and marshy lands. Soil sandy, and black and clay loams. Watered by many streams. Wells up to 100 ft. Pop. 34,375.

PRESCOTT Co. Rolling, flat in parts. Soil sandy and sandy loam, clay. Subsoil heavy clay and gravelly. Watered by Nation River, Ottawa River and Rideau Canal. Pop. 26,968.

RENFREW Co. In s. generally rolling, in w. dry and hilly. Soil varies, much clay mixed with clay and sandy loam. Well watered by rivers and creeks. Abundant water power. Pop. 51,469.

RUSSELL Co. Mostly flat, rolling in some sections along Ottawa River. Much marshy land and low flat areas. Soil largely a kind of clay marl, some very sandy areas. Watered by Ottawa, Casteau and Nation Rivers. Wells 20 to 40 ft. Pop. 35,294.

†ONTARIO CO. Mostly rolling, part flat, part sandy and hilly; marshy in centre, rocky at north. Soil, mostly loam to clay loam, 12 to 18 ins. Subsoil mostly clay, some sandy and gravelly. Watered by a few small lakes and several creeks. Wells 12 to 90 ft. served by C.P.R., C.N.R., G.T.R. (Toronto Elec. Ry. building). Hydro-elec. power in north and south. County has international reputation for pure-bred short-horn cattle, Clydesdale horses and sheep. 6 creameries. The south is well adapted to fruit growing, market gardening and mixed farming, for nearby Toronto market; in centre, to mixed farming and stock raising; in north, to mixed farming, ranching and sheep raising. Farms average \$60 per acre. Pop. 41,006—mostly British.

†PETERBOROUGH CO. Generally hilly. All kinds of soil found. A quantity of well-wooded rocky land unfit for agriculture, except sheep and cattle grazing. Watered by many streams and lakes. Numerous artesian wells. Usual depth of wells about 40 ft. Served by C.P.R., G.T.R. and Trent Valley Canal. Leading crops, oats, barley, wheat, hay, corn and roots. 24 cheese factories, 3 creameries, 10 combined factories. Local markets at Peterborough, Norwood, Havelock, Lakefield. Water power on Otonabee River. Farms cost \$40 to \$80 per acre. Pop. 41,651. English, Irish and Scotch.

PRINCE EDWARD CO. Practically an island on north shore of Lake Ontario, connected by an isthmus 5 miles broad, which is served by the Murrau Canal. Low rolling hills with considerable woodland and deeply indented bays, make county very beautiful. Soil chiefly clay loam and clay gravel, considerable sandy loam and some clay loam. There is land well adapted for growing berries near Picton and Bloomfield and in the western section. Dairying is chief industry, followed closely by fruit and vegetable growing for canning factories. C.N.R. traverses the county, connecting with C.P.R., G.T.R. and main line of C.N.R. at Trenton. Chief centres: Picton, 4,200; Wellington, 1,000; Bloomfield, 900. 24 canneries, 12 cheese factories, 10 combined factories. Farms cost \$50 to \$125 per acre. Pop. 17,150.—Irish, English and Scotch.

ST. LAWRENCE VALLEY. Includes parts of Counties of Leeds, Grenville, Dundas, Stormont, Glengarry. Is famous for beautiful scenery with "the Thousand Islands." Served by G.T.R., C.P.R., C.N.R., and water transportation on St. Lawrence and Rideau Canal. Dairying district, with mixed farming. In the 5 Counties there are 272 cheese and 53 combined cheese and butter factories. Crops are practically all fed on the farm to cattle and hogs. Large acreage planted to beans. Gasoline engines are generally used for power. Good markets at Montreal and Ottawa. Farms cost \$35 to \$75 per acre. Pop. of the 5 Counties, 100,966.—English, Scotch, Irish, U.E. Loyalists, French-Canadians and some Germans.

†**DUNDAS Co.** Flat, with some swampy areas; Mountain Tp. and w. part of Matilda Tp. contain large sand areas; rest of county dark clay loam, 3 to 4 ft., with clay sub-soil. Pop. 18,165.

GLENGARRY Co. Land rolling, flat in parts. Soil varies, sandy loam, gravel, clay and heavy clay. Well watered with streams. Wells 10 to 100 ft. Leading crops, oats, barley, hay, corn. Dairy and mixed farming. Farms average \$100 per acre. Pop. 21,259.

†**GRENVILLE Co.** Generally rolling. Soil, about 10 in., mostly sandy loam, with large areas of clay loam flats. Pop. 17,545.

†**LEEDS Co.** Rolling, in parts rough and hilly, marshy near small lakes. Soil, clay, clay loam and black loam to good depth, in parts sandy, shallow loam and gravelly. Well watered by creeks and streams. Pop. 18,222.

STORMONT Co. Flat, small areas of marsh, mostly comparatively dry. Soil 2 to 3 ft. clay loam, with large

areas gravelly. Subsoil, clay. Wells, 20 to 30 ft. Pop. 24,775.

†**VICTORIA CO.** Mostly rolling, some parts hilly, large areas marshy and swampy. North half shallow, limestone and hilly granite. Soil, generally clay loam, some sand. Subsoil mostly hard clay and some gravel. Watered by streams and Kawartha chain of lakes. Served by C.P.R. and G.T.R. Mixed farming. 8 cheese factories, 6 creameries. Good market at Lindsay. Farms average \$70 per acre. Pop. 36,499—English, Scotch and Irish.

Northern Ontario

NORTHERN ONTARIO. This name has been given to that part of Ontario lying north of the French River and Lakes Huron and Superior. Area, 147,000 sq. miles, of which 60 million acres is covered with spruce, black pine and poplar. North Ontario has been made world-famous by the nickel deposits at Sudbury, the Cobalt Silver Mines and the Porcupine Gold Fields. Only the fringe of the mineral belt has been touched. Moose, caribou, bear, beaver, wild duck and partridge are plentiful.

Cities and Towns. The principal cities and towns in New Ontario are Fort William, Port Arthur, Sudbury, North Bay, Cobalt, Porcupine, Sturgeon Falls, Sault Ste. Marie, Dryden, Fort Frances, Kenora, Englehart, Haileybury, New Liskeard, Charleton, Matheson and Cochrane.

Colonization. In some districts free grants of Crown Lands (single man 100 acres, head of family 200 acres) can be obtained. In others, lots of 160 acres may be purchased at 50c. an acre—settlement duties in both cases. Provision has been made for loaning of money to settlers by the Provincial Government. (See also Settlement of Soldiers on page 96). An experimental farm with over 800 acres has been established at Monteth. 100 acres have been secured for a demonstration farm and agricultural High School at New Liskeard. A plant breeding station is run at Fort William in connection with the Jail Farm there to study plant life suitable for northern agriculture.

Education. There are Collegiate Institutes at Fort William and Port Arthur; High Schools at Haileybury, Kenora, North Bay, Sault Ste. Marie and Sudbury; Continuation Schools at Blind River, Bruce Mines, Fort Frances, Keewatin, New Liskeard, Sturgeon Falls and Webbwood, and a Normal School at North Bay. Prim-

ary Schools are numerous. The old-fashioned log-house schools are being replaced, generally, by solid and well-equipped modern buildings. Owing to the peculiar conditions in a new district, the Provincial Government makes a special provision for Northern Ontario, and liberal grants are given to aid the building of new schools.

Transportation. Easy transportation is afforded by a net-work of rivers and lakes which are full of fish. The region is traversed by the Can. Nat. Ry., T. & N.O.R., and C.P.R. There are colonization roads in the districts which are open for settlement.

CLAY BELT. From the shores of James Bay, flat, swampy land extends for about 150 miles. Thence the "Clay Belt" rises abruptly several hundred feet higher, the benches being similar to those in the Niagara Peninsula, near Hamilton. The soil is mostly a rich friable clay, with vegetable mould of varying depth. In part (e.g. at Englehart), sandy loam prevails suitable for fruit growing. Around Iroquois Falls the soil is browner towards the western end. In most places some drainage will be required, but the large number of runs affording natural outlets makes this easy. In the south, the Clay Belt begins about North Cobalt and Haileybury, and extends some 40 miles north bounded by the Quebec frontier on the east, and the Montreal River to the west. Here it is broken by 25 miles of mining country, containing the Dane and Swastika Districts. Thence the land is nearly all good to Cochrane, the most northerly railway point. Beyond this a tract of good agricultural land, of about 100 miles, reaches all the way to the benches. Mr. T. B. Speigh, President of the Association of Ontario Land Surveyors, estimates that, after making deduction for sandy and gravelly areas in certain localities, from 65% to 75% of the clay belt is good farm land, and that comprehensive draining will make a considerable addition. The whole area is estimated at over 16 million acres.

Climate. The summers are hot and the winters cold, but dry. Summer frosts are rare. The crops ripen more rapidly than in the south, owing to longer hours of sunlight. South of Cochrane, the average date of last frost is June 1st; first frost, September 11th. The mean annual temperature at Haileybury, on the Quebec Boundary, is 36.8°. Average annual precipitation, 31.77 inches. At Kenora, on the Manitoba Boundary, mean annual temperature 35.5°. Average annual precipitation, 22.14 inches.

LATITUDE. Cochrane, the present northern terminus of the T. & N.O. Railway, lies on the 49th parallel, i.e.,



A Fishing Camp in N. Ontario.

almost the same latitude as the boundary between the United States and the Western provinces of Canada. Haileybury, on the southern limit of the Clay Belt, lies between the 47th and 48th parallels, or further south than any part of Manitoba, Saskatchewan, Alberta or British Columbia, and on a level with the northern part of France, Austria and the Chinese Empire. Winnipeg, Man., is about 50 miles further north than Cochrane.

Settlers' Advantages. There is a market at the door, at high prices, for all farm produce. Fuel can be had for the cutting. The forest affords protection from the winds. In winter, money can be earned in the lumber, mining or construction camps. A settler can often sell logs off his own land to the pulp and paper mills, see page 36. Numerous lakes and rivers afford abundant water supply and facilitate travel. Fish, game and wild fruit abound.

HOME MARKETS. Lumber and mining camps provide a market close at hand for all farm produce at high prices with the constant development of mining and the proximity to the large centres in Southern Ontario a steady market is assured for years to come.

WINTER EMPLOYMENT. In winter money can be made in the lumber, mining and construction camps. The settler can pay for the labor of clearing by sale of pulpwood and lumber off the land. See Pulp Mills on page 36.

GRAIN CROPS. Barley, oats and wheat are grown, for which early sowing is necessary. At Monteith Farm fall wheat has for 3 years in succession averaged 30 bushels; of spring wheat, Marquis and Prelude have grown to maturity, the former yielding 20 bushels; of Carley, O.A.C. No. 21 has yielded 40 bushels; of oats, O.A.C. No. 3 has matured in 90 days and yielded 60 bushels per acre.

ROOTS AND VEGETABLES. Potatoes, peas, parsnips, carrots and beets thrive everywhere. Cabbage does well. Tomatoes and pumpkins ripen in some parts. At Monteith Demonstration Farm, in 1917, 6 varieties of potatoes produced 230 bushels per acre; the varieties best adapted to the district went away beyond this. North Ontario is so far free of the Colorado beetle and fairly free of potato diseases. Of turnips, over 1,000 bushels per acre were harvested, turnips 8 and 10 lbs. being common.

FODDER CROPS. Fodder grasses, white and red clover do exceedingly well; alfalfa is cultivated.

FRUITS. Wild strawberries, raspberries, plums, currants. Of cultivated fruits, gooseberries, cranberries and blueberries grow profusely. Melons ripen, but occasionally need to be covered at night. Rhubarb does as well here as anywhere. Herbert raspberries promise well, Victoria have proved hardy; promising experiments are being made in plums, cherries and crab apples.

DAIRYING. There are great possibilities. In 1918 22 cheese factories and 8 creameries made 750 lbs. of cheese and nearly 250,000 lbs. of butter. The Clay Belt is pre-eminently a stock raising country.

CROWN LANDS, REGULATIONS. Agricultural lands open for disposal in Northern Ontario may be obtained by:

- (1) **PURCHASE.** 160 acres may be sold to each applicant, who must be a male or sole female head of a family, or a single man of 18 years. The price is 50c. an acre, payable $\frac{1}{4}$ cash, balance in three annual instalments with interest at 6%. Purchaser must go into actual residence within 6 months of date of purchase; erect a habitable house at least 16 x 20 feet; clear and cultivate 10 per cent. of the area, and reside on the land for three years before patent issues. After the issue of patent another 160 acres may be purchased on like conditions. Proxy regulations permit a purchaser to place a representative on the land to perform settlement duties, but require double the amount of clearance and cultivation.
- (2) **FREE GRANT.** Except in the Temiskaming District, certain lands considered suitable for cultivation and not valuable chiefly for pine timber or minerals may be located as Free Grants. A single man over 18, or head of a family, may locate 160 acres, and the latter may purchase an additional 80 acres at 50c. per acre cash. In St. Joseph's Island and the Townships of Bonfield, Calvin, Cameron, Ferris, Mattawan and Papineau in Nipissing District, and Paipoonge in Thunder Bay, a single man may secure 100 acres free, a head of a family may locate 200 acres and buy an additional 100 acres; a single man may locate 100 acres and may swear off for rock and swamp up to 100 acres.

The conditions entitling a Locatee to patent are: (a) Clearing and cultivating 15 acres, of which at least 2 acres must be done each year; (b) erection of a habitable house at least 16 x 20 ft.; (c) continuous residence and cultivation for 3 years after location and thence to the issue of patent. Absence for not more than 6 months altogether in any one year may be allowed if sufficient reason is shown. For full information, forms,

etc., write the Agents in the various districts, or Director of Colonization, Parliament Buildings, Toronto.

ALIENS. To enemy aliens no lands will be sold or located. To neutral and friendly aliens lands may be sold or located but a promise in affidavit form must be given that steps will be taken as early as possible to secure naturalization papers; a sale or location is then allowed; but under no circumstances will patent issue for farming purposes until absolute proof is filed that the applicant is a British subject.

RETURNED SOLDIERS. Returned Soldiers may secure in any township opened for sale a Free Grant location, subject in every respect to the performance of settlement duties. Where Returned Soldiers already hold unpatented land against which arrears are due to the Crown, these arrears are remitted.

ALGOMA DISTRICT. Area, about 36,500 sq. miles. Character of land and kinds of soil are varied. The southeastern portion contains the Mississaga Forest Reserve. The district is bounded on the south by the north channel of Lake Huron, on the southwest by Lake Superior, and on the west by the Thunder Bay District. Good roads in the neighborhood of the towns. The proposed Georgian Bay Canal route from Lake Nipissing to the Ottawa River passes through the middle of the district. (See under Georgian Bay Ship Canal.) Some grain is grown, but the district, generally is better suited to mixed farming, dairying and grazing. Hay, oats, peas and roots thrive well. There are several popular summer resorts on Lake Temagami, and the Highland Inn, Algonquin Park, is open all the year round. Write Dept. of Lands, Forests and Mines, Toronto.

RAINY RIVER DISTRICT. Extends 200 miles westwards from Thunder Bay District to Manitoba boundary, and 80 miles south from Kenora District to Rainy River, the boundary of State of Minnesota. The Lake of the Woods, Rainy River and Rainy Lake form an international waterway to the south and west. The district is traversed by Can. Nat. Ry., C.P.R. The Government is building a macadamized trunk road from Fort Frances to Rainy River; 22 roads north and south will be added afterwards. The northern part is hilly with rocky ridges, lakes and rivers. The arable land at present being developed extends north 15 to 20 miles from the C.N.R. track and is about 70 miles from east to west. In some parts there are 5 to 6 miles of country south of the C.N.R. The area is estimated at about 1,000,000 acres and is covered

generally with spruce, jack pine, poplar, and white birch. Cost of clearing land averages \$20 per acre. In the Rainy River valley the land is level. The soil varies from clay to sandy loam, with clay subsoil. There are occasional swamps, timbered with cedar, spruce and tamarack. Muskeg swamps covered with moss, shrub balsams, spruce and tea weed are easily cleared and are ideal for celery, cranberries, etc. Running wells can be obtained at 50 ft. The principal crop is oats. Fall wheat yields 40 to 50 bushels. Spring wheat, peas, beans and buckwheat are grown. The early varieties of corn do well. The Rainy River Potato Growers' Association, with over 150 members, specialize in seed potatoes. All kinds of wild berries, plums and crabapples thrive. Abundant clover affords the finest pasture for cattle. There are some fine flocks of sheep. The Quetico Forest Reserve contains 1,560 sq. miles. There are many choice tracts of timber with adjacent water powers. The lumber industry gives employment to over 3,000 men. Gold is found near Lake Manitou, Sturgeon Lake, Seine River and the Lake of the Woods. Iron is mined around Atikokan; hæmatite and bog iron are found near Fort Frances. There are many deposits of copper. See under "Mining." An important supply of caviar comes from sturgeon caught in the Lake of the Woods. The principal markets for farm produce are Fort William and Port Arthur to the east, Winnipeg and Brandon to the west, Kenora and Keewatin to the north, St. Paul, Minneapolis, Duluth and Chicago to the south. Local markets are afforded by the lumbering and mining camps, and at Fort Frances, Emo and Rainy River. Free Crown Lands are obtainable, with additional land at 50c. per acre. Improved farms at \$25 to \$50 per acre. Partly improved, \$10 to \$50. Population of district includes English, Irish, Scotch, Canadians, Americans, Swedes, Norwegians and Danes. Write Sec. Fort Frances Bd. of Trade for pamphlet "Rainy River District."

SADBURY DISTRICT. A large part of the district is rocky, and in the nickel mineral belt the arable land is scattered. Land varies from rolling to flat, with sandy and clay loam, about 25 in. deep. Is marshy in parts. The timber consists of white and red pine, jack pine, spruce, balsam and poplar. Abundance of water supplied by creeks, springs, rivers and lakes. Good wells at 20 ft. The Can. Nat. Ry. and C.P.R. traverse all townships open for settlement. Oats average 35 bushels. A little wheat is grown. Hay, grain and all kinds of roots and vegetables find a ready market at

high prices in the lumber camps. There are over 20 lumber companies operating in the district. The principal towns are Sudbury, Copper Cliff and Chapleau. Part of Timagami Forest Reserve lies in the eastern section. 74 per cent. of the world's nickel output comes from this district. See under "Mining." Crown lands can be obtained at 50c. per acre. Improved farms up to \$20. Write Dept. of Lands, Forests and Mines, Toronto, and Sec. Bd. of Trade, Sudbury, Ont

TEMISKAMING DISTRICT. Extends along the western boundary of the Province of Quebec on James Bay, to Sudbury and Nipissing Districts at the south. The height of land between North Bay and New Liskeard is rock, with lakes and pine and spruce forests. The Clay Belt begins at Haileybury and New Liskeard. Land suitable for settlement is generally rolling and is mostly covered with spruce and jack pine, and, in some localities, with cedar. The soil is invariably a clay loam, with clay subsoil. In some parts, best results are obtained with under draining; cost of clearing averages \$20 per acre. Oats have produced 60 to 75 bushels, running 37 to 40 lbs. per bushel; barley, 50 bushels. Timothy and clover grow in profusion. A little wheat is grown. For peas, potatoes, turnips, onions, cabbages, cucumbers and other garden stuff the country is ideal. Dairying is carried on and is capable of great development. Part of the Timagami Forest Reserve, 5,900 sq. miles lies in the southern portion. The principal towns are Cobalt, Haileybury, Englehart, Cochrane, Porcupine, New Liskeard, and Latchford. The district has been made world-famous by the silver mines at Cobalt, and the Porcupine gold mines. The mining camps afford a sure local market at high prices. Population of district includes English, Scotch, French, Canadians and Irish. Crown lands obtainable at 50c. per acre. Improved farms at \$10 per acre. Write Dept. of Lands, Forests and Mines, Toronto.

THUNDER BAY DISTRICT. The soil of various kinds, including gravelly soil, sandy loam, loam, clay loam and heavy clay. Clay and clay loam predominate and produce good crops without artificial aid. The sandy and gravelly portions are not so rich, but give good results with a small amount of fertilizer. Certain crops must be sown as early as possible, owing to the shortness of the summer. In Slate River Valley (i.e., the part south of the Kaministiquia River), and in the Dorion neighborhood (about 40 miles e. of Port Arthur), barley often yields from 60 to 70 bushels per acre, oats from 70 to 75 bushels, wheat sometimes as much as



**The Annual output of Dairy Products amounts to about Sixty-five Million Dollars.
Ontario produces more than half the Cheese manufactured in Canada.**

40 bushels. Peas, and other leguminous crops, are grown successfully. The district in general is especially suitable for potatoes, often producing 350 to 400 bushels per acre, and seldom less than 225. Turnips, carrots, beets, mangolds, parsnips, cabbages, cauliflowers, rhubarb and asparagus are profitable crops. Dairy farming and stock raising are easily carried on, owing to abundance of good water and grass crops in all parts. All kinds of clover and timothy thrive naturally as soon as land is cleared and yield from 3 to 4 tons per acre. Milk will fetch \$2 per 100 lbs. and cream \$1.25 per gallon in the Fort William and Port Arthur markets. Beekeeping and poultry raising can be developed. Large fruits can hardly be grown on a commercial scale, but small fruits, especially strawberries, give good returns. The district is principally timbered with jack pine, spruce, cedar, tamarack, birch and aspen. Cost of clearing ranges from \$5 to \$20 per acre. Vast iron deposits occur at Atikokan, between Port Arthur and Fort Frances. There are innumerable lakes and streams, many of which are navigable. The largest body of water is Lake Nipigon, in the Nipigon Forest Reserve, about the centre of the district. It drains into Lake Superior by the Nipigon River, which is famous for its speckled trout fishing. Transportation is afforded by the Can. Nat. Ry. and C.P.R. at the south. In addition, the Canadian Nat. Ry. has a branch line from Superior to Port Arthur. The South-western Section is well served by the Can. Nat. Ry. and C.G.R., which converge at Fort William, and by the Can. Nat. Ry. at the north. Write G. R. Duncan, Fort William.

DISTRICT OF PATRICIA. This district was added to the province in 1912. Its area is about 157,400 sq. miles; bounded on the west and northwest by the Province of Manitoba; south and southeast by the English and Albany Rivers; east and northeast by Hudson Bay and James Bay, with a coast line of 400 miles. The greater part of the district is still unexplored and uninhabited.

FORESTS. Total area of forest land in Ontario is estimated at 102,000 sq. miles. North of the C.P. Ry. are about 60 million acres covered by spruce, jack pine, and poplar. Red and white pine are found in large quantities in the Timagami Forest Reserve around the shores of Lakes Timagami and Lady Evelyn; along the Montreal, Sturgeon and Wahnepitae Rivers and their tributaries; in the Mississaga Reserve, on the river bearing the same name and along its numerous tributaries; in the district of Rainy River, along the Min-

nesota Boundary, extending from Rainy River to Hunter's Island, and in small groves throughout the Sudbury District as far north as Fort Mattagami. The stand of white and red pine still vested in the Crown, on unlicensed lands, is estimated at over 12 billion feet b.m. Pulpwood standing on Crown Lands undisposed of is estimated at 350 million cords.

PULP AND PAPER MILLS. The Spanish River Pulp and Paper Co. operate mills at Espanoia, on the Spanish River, and at Sturgeon Falls; The Mattagami Pulp & Paper Co., Ltd. (H.O., Royal Bk. Bldg., Toronto), operate a mill at Smooth Rock Falls, 30 mil. w. of Cochrane, on Can. Govt. Ry. Other paper mills are the Sault Ste. Marie Pulp and Paper Co. at Sault Ste. Marie; the Dryden Timber and Power Co. at Dryden, and the Abitibi Pulp and Paper Co. at Iroquois Falls.

Mining

MINERAL PRODUCTION. The annual Mineral Production of the Province of Ontario, for the past ten years as published by the Bureau of Mines, Ontario, is as follows:

1908.....	\$25,637,617	1913.....	\$53,331,647
1909.....	32,981,375	1914.....	46,295,959
1910.....	39,313,895	1915.....	61,800,178
1911.....	41,976,797	1916.....	65,303,822
1912.....	47,607,063	1917.....	72,093,832

Write for Bulletin, giving latest statistics of production, to Deputy Minister of Mines, Toronto.

PROSPECTING. There are tempting opportunities for acquiring wealth in the mineral lands situated in the eastern, northern and northwestern districts of Ontario. Discoveries are constantly being made of iron, nickel, cobalt, copper, silver, gold, and many other valuable substances, both metallic and non-metallic.

MINING REGULATIONS. The Provincial Regulations require a prospector to take out a license costing \$5. This is good anywhere except in Forest Reserve, where an extra permit, costing \$10, is required. Three claims of 40 acres each may be staked out in each mining district. The prospector must: (1) Record these at the nearest recorder's office; (2) pay \$10 for each claim; (3) do 30 days' development work of at least 8 hours per day on each claim during the first 3 months after registration, 60 days' work in each of the ensuing two years, and 90 days' work in the third year; all of which must be recorded. He is then given a patent on payment of \$3 per acre in surveyed areas, and \$2.50 in unsurveyed.

COST OF OUTFIT. Usually two or more prospectors travel together. A cedar canoe costs from \$40 to \$60; a tent, \$6 to \$8; cooking utensils, \$5; and blankets, \$4 to \$5 a pair. Provisions, such as flour, pork, tea, rice, etc., would cost about 35c. a day for each person.

FURTHER INFORMATION. For mining laws, maps, reports, etc., apply to the Minister of Mines, Ontario.

ARSENIC. Refined arsenic is produced at the works of the Deloro Mining and Reduction Co., Deloro, and the Coniagas Reduction Co., Thorold and The Metals Chemical, Ltd., Welland, from the silver-cobalt ores of the Cobalt district. Arsenical ore is also found in the County of Hastings and the Timagami, Nipissing and Rainy River Districts.

BUILDING AND ORNAMENTAL STONE. **GRANITE** is quarried in the Counties of Hastings, Leeds and Ontario, and the Districts of Muskoka and Parry Sound.

TRAP-ROCK, in the County of Peterborough and near Bruce Mines and Port Arthur.

LIME STONE quarries are widely distributed between the Gt. Lakes and the Ottawa River. (See "Marble").

SODALITE, the Princess Quarries Co., near Bancroft, Hastings Co., quarry a beautiful blue sodalite stone.

MARBLE. Near Bancroft white crystalline limestones and variegated marbles are worked by the Ontario Marbles Quarries Co., Ltd. Marble for the Parliament Buildings, Ottawa, was obtained from near Arnprior. Marble deposits are being worked in Lanark Co.

CEMENT. There are 14 active plants with a total daily capacity of 17,750 barrels. The plants at Marlbank, Durham, Shallow Lake, Owen Sound, Lakefield, Hanover, Blue Lake, Raven Lake, Orangeville and Ottawa, use marl. Plants at Belleville, Port Colborne and Owen Sound, use limestone.

POTASH. For potash as a by-product of cement factories see under Feldspar.

CLAY. All the decorative brick, terra cotta, roofing, tile and sewer pipe made in the province, is from the Hudson River, Medina and other Devonian shales, which occur about Toronto, Hamilton, Beamsville, Milton, Brampton and Thedford. The Erie Clay, which is widespread, yields a good class of white brick. An upper weathered band of this clay makes good red brick. Brickmaking clays are abundant throughout the province, and many millions of brick are made every year.

PEMBROKE

AN IMPORTANT
INDUSTRIAL CENTRE



Pembroke is 100 miles west of Ottawa on Can. Nat. Ry., C.P.R. and G.T.R.
Cheap Hydro Elec. Power | Attractive Residential Conditions
Abundance of Labour | Exceptional Attractions for Sportsmen

Read description of Pembroke on page 77, then write for further information to

THE MAYOR . . . PEMBROKE, ONTARIO

FIRECLAY occurs at the Helen Mine in Michipicoten on the Missinable River near the Can. Nat. Ry., and on the Mattagami River near Long Rapid. There is no fireclay in the more settled districts.

COBALT. The mineral occurs abundantly in the silver ores of Coleman Township (see under Silver). The Deloro Mining and Reduction Co., Deloro, and the Coniagas Reduction Co., Thorold, and Metals Chemical, Ltd., of Welland manufacture cobalt oxide. In addition the first two produce metallie cobalt and the last cobalt sulphate and other compounds. The mines of the Cobalt district are now the chief source of the world's supply of cobalt.

COPPER. The principal source is the nickel copper mines (see under Nickel). The ore is smelted at Copper Cliff and Coniston. The sulphide deposits on the north shore of Lake Huron, which do not carry nickel are of great importance. Recent high prices have stimulated production. In 1917 shipments were made from Tip Top Mine west of Port Arthur, from Mine Centre in Rainy River District and from the Massey Mine on the north shore of Lake Huron.

CORUNDUM. Large deposits of corundum in Renfrew and Hastings Counties are worked by The Manufacturers' Corundum Company at Craigmont.

FELDSPAR. Quarries in Frontenac County are operated by Messrs. J. Richardson & Sons, Kingston, the Canada Feldspar Corp. and I. M. Stoness & Son. The product is shipped to New Jersey and Ohio factories, for making enamelled ware. Total output in 1917 was 17,614 tons, valued at \$78,562.

POTASH. A slag has been produced by Prof. Drury of Queen's University which promises a supply of potash for fertilizing purposes.

GOLD. Ontario is now the largest gold-producing province in Canada. In 1917 the output was 420,893 fine ounces, worth \$8,698,735. The Hollinger Mine is world-famous. Rich ore has been found at Kirkland Lake, where the Tough-Oakes, Teck-Hughes and Lake Shore mines have been opened with mills. Larder Lake, Swastika, Munro, Kowkash, Boston Creek, Goodfish Lake, and other camps in Northeastern Ontario are being prospected with fair promise of reward. Cairo and Powell Townships may prove very important gold producers. There is also gold on Lake-of-the-Woods, Seine River, Manitou Lake, Sturgeon Lake, Wabigoon Lake, and at many other points in the northwestern parts of the province. The output of the chief producing mines in 1917 was:

	Ounces	Value
Hollinger Consolidated.....	204,810	\$4,233,777
McIntyre Porcupine.....	81,827	1,696,126
Dome Mines.....	71,193	1,471,705
Porcupine Crown.....	18,180	375,766
Tough Oakes.....	16,384	338,593
Porcupine N.T.....	10,416	208,350
Schumacker.....	9,551	197,413

GRAPHITE. Refined graphite is produced in Renfrew and Haliburton Counties. Other important deposits occur in Haliburton, Hastings, Addington, Frontenac, Leeds and Lanark Counties, some of which have been worked. A lead pencil factory has been established at Newmarket by Wm. Cane, Sons & Co., Ltd. 3,173 tons of refined graphite were marketed in 1917, value \$296,587.

GYPSUM. The principal deposits are along the Grand River. The Ontario Gypsum Co., of Paris, manufactures wall plasters, alabastine, and a variety of commodities. There are extensive beds on the James Bay slope, but as yet these are inaccessible.

FLUORSPAR is mined at Madoc, in Hastings Co. It occurs often in large well formed crystals of a beautiful green color. The 1917 production was 4,327 tons, valued at \$66,474, shows a big advance in price.

IRON. The output of iron ore in 1917 was 176,833 tons shipped, 136,343 tons of which was exported to the United States. The ore comes from the Helen and Magpie Mines near Michipicoten, and Moose Mountain. Iron ore is found in Wisner Township, north of Sudbury; at Burwash Lake, in Timagami Reserve, east of Lake Nipigon and other localities in Northern and Eastern Ontario.

IRON PYRITES. Sulphur occurs abundantly in the form of iron pyrites, which are roasted to manufacture sulphuric acid. The Nichols Chemical Co. of Canada, at Sulphide, and the Grasselli Co. at Hamilton, manufacture sulphuric, nitric and mixed acids. Large deposits of pyrite are being worked by the Nichols Chemical Co., near Superior Junction, on the Can. Nat. Ry., and at Gondreau on the Algoma Central Ry. In 1917 the output was 286,049 tons, worth \$1,112,264.

LEAD. In Ontario the chief production comes from Galetta, Renfrew County. The Frontenac Mine in the county of the same name is operated by the Indian Lake Lead Mining Co. The Hollaudia, at Bannockburn, is also an intermittent shipper. There are smelters both at Galetta and Kingston, the former operated by the

James Robertson Estate and the latter by the Kingston Smelting Co. In 1916 the total production was 796,833 lbs., valued at \$70,863.

MICA. The production is principally in the hands of large operators, of which the General Electric Co., controlling the Loughborough Mining Co., is chief. They produce large quantities from the Lacey Mine, near Sydenham, and from near Perth. The output, 1917, chiefly of amber variety, was 435 tons rough cobbled mica, worth \$85,353. Canadian mica has a good reputation for flexibility, freedom from stains, etc. Export trade chiefly with U.S. and Great Britain. In Europe, Indian mica is a strong competitor.

MINERAL PIGMENTS. Ochre is produced in small quantities in Halton Co. Other important deposits occur in Algoma District and Norfolk and Leeds Counties.

NATURAL GAS. In Haldimand Co., gas is piped from a large number of wells to Hamilton, Dundas, Brantford, Galt, Paris, and a number of other places. Welland County continues to produce much gas, supplying Welland, Hamilton, St. Catharines, Niagara Falls and other towns and villages. In Kent County, gas is supplied to Leamington, Chatham and other places, from the Tilbury and Romney fields. The exportation of natural gas is prohibited. In 1917 the production was 20,025,699 M. cub. ft., worth \$3,220,123.

***NICKEL.** Seventy per cent. of the world's output comes from the Sudbury district. Here ore is mined and treated by the Canadian Copper Co. and the Mond Nickel Co. It is first roasted in open air heaps to expel sulphur, then smelted into matte of nickel and copper, which is shipped, for final separation of the metals, by the Canadian Copper Co. to Constable Hook, N.J., and by the Mond Nickel Co. to Clydach, Wales. The Alexo Mine is being worked in Dundonald Township, on the T. & N.O. Ry. The ore is a pyrrhotite similar to that of the Sudbury region and is being treated by the Mond Nickel Company at Victoria Mines. Returns of ore smelted in 1916 show: Ore, nickel contents, 41,299 tons; value, \$20,649,279. Copper contents, 22,430 tons; value, \$8,299,051.

***NOTE.**—Smelters are being constructed by the British America Nickel Co. at Murray Mine near Sudbury, and by the International Nickel Co. at Port Colborne.

PETROLEUM. The oil fields of Petrolia, Oil Springs and Tilbury East, continue to produce at a stationary rate. New fields have been opened in Mosa Township,

Middlesex Co., at Thamesville and in Dover Township, Kent Co. The demand for oil and oil products requires the importation of much more crude than is produced in the province. Returns for 1917 show crude oil produced, 7,104,700 imp. gals.; value, \$475,000. There are 5 companies refining crude Canadian oil: 1 at Sarnia, 2 at Petrolia, 1 at Toronto, 1 at Wallaceburg.

PLATINUM AND PALLADIUM. These metals are found associated with chalcopyrite in the nickel-copper ores of the Sudbury district. A clean-up is made every few years at the Jersey refinery of the International Nickel Co.

SALT. The evaporating process is responsible for the total output of salt. The bulk comes from the wells of the Canadian Salt Company, at Windsor. Other companies operate at Exeter, Goderich, Clinton, Wingham, Kincardine, Courtright, Mooretown and Warwick. The salt area extends through the Counties of Middlesex, Huron, Bruce and Lambton. In 1917, output was 138,909 tons, worth \$1,047,707. At present no rock salt is mined. A boring was made at the mouth of the Maitland River, at Goderich, by the late H. Y. Attrill, of 1,517 feet. This is said to be the purest salt in the world.

CHEMICAL SALTS. The Chemical plant of the Canadian Salt Co. at Sandwich is one of the largest in the British Empire. Limestone necessary for chemical salt production lies close to the salt deposit convenient for water transportation at Goderich.

SILVER. The discovery of high-grade silver ores in the Cobalt District was made in 1903. Ores carry up to 3,000 and 4,000 ozs. of silver to the ton of 2,000 lbs. Some of the consignments have gone much higher. Carload lots of 30 tons have brought \$60,000, \$90,000 and \$110,000. A typical analysis gives silver 11%, cobalt 11%, nickel 4%, arsenic 44%. In 1917 shipments of ore from the Cobalt camp were 19,479,692 ounces, worth \$16,183,208. Valuable discoveries have been made at Gowganda and south of Lorraine Township, where mines have been opened. The dump and low grade cobalt ores are treated by the flotation process. Similar ores were formerly worked at Silver Mountain, west of Port Arthur, and at Silver Islet, Lake Superior. The intervening district offers many possibilities to prospectors.

TALC. The highest grade talc on the continent is mined near Madoc, where it is ground and exported in considerable quantities to the United States and Europe,

for paper-making, cosmetics, etc. There were shipped in 1917, 16,076 tons, mostly ground talc, value \$179,554.

ZINC. Formerly the Olden Mine, in Hastings County, raised a small quantity of ore and shipments were made from near Thunder Bay and from Frontenac County. There are unworked deposits on the main line of the Canadian Pacific Railway and elsewhere. No shipments have been made since 1910.

Water Powers

NOTE.—Ontario has to depend entirely on the U.S. for coal, upon which an embargo might at any time be placed. Electricity serves as a commodity with which to bargain for coal as well as a source of light, heat and power.

WATER POWERS. In a report on the Water Powers of Ontario issued by the Dominion Water Powers Branch at Ottawa in 1915, the total potentiality of the water powers is given as 4,929,000 h.p., and the total developed power as 702,000 h.p. The following summary is given of the available water powers according to districts:

Ottawa River and Tributaries.....	688,000 h.p.
Great Lakes Tributaries.....	446,000 h.p.
Hudson Bay Slope.....	250,000 h.p.
James Bay Slope.....	1,500,000 h.p.
International Boundary Rivers.....	2,045,000 h.p.

Developments of Hydro-Electric Power Commission.

By an Act passed in the Provincial Legislature, 1898, any water power or privilege on the Crown Lands may be reserved from sale, except water privileges, which in their natural condition at the average low state of water have not a greater capacity than 150 horse power. Since the passing of this Act a Hydro-Electric Commission has been appointed with authority to deal with the whole question of the development and supply of electric power. The Commission has constructed and is operating 10 separate and distinct transmission station systems, and is delivering power to 194 municipalities.

FURTHER INFORMATION.—For details of water power developments in Ontario, and the municipalities served, see *Heaton's Annual*.

Boards of Trade Register

Extracts from the
Official Boards of Trade Register
Published in Heaton's Annual and
Heaton's Handbooks of Canadian Resources

NOTE—The Provincial Government assumes no responsibility in connection with this chapter. The information is compiled from returns made by the local Boards of Trade.

Chief Town of County Judicial District marked ¶

Population according to Dominion Census, 1911 *

ACTON (Halton Co.), 35 miles w. of Toronto, on G.T.R. Hotels, Dominion, Station. 5 churches, public and high schools, park, 2 banks. Industries, 2 large tanneries, belting, gloves. Govt. Hydro-electric power. Alt. 1,198. Pop. 1,720.

NOTE.—Toronto Suburban Ry. in operation.

SPECIAL OPPORTUNITIES.—Cheap elec. power. Good sites with railway trackage. Liberal inducements on application. Write Sec. Bd. Trade.

¶**ALEXANDRIA.** (Glengarry Co.); on G.T.R., 52 miles e. of Ottawa; (C.P.R. at Green Valley Sta., 3 miles). Hotels, Ottawa, Grand Union \$2. County Registry Office, 2 banks, 3 churches (2 R.C. and Pres.). Waterworks and electric light and sewer systems (owned by town). Carriage factory, office furniture factory, coupling factory. Neighborhood supplies hardwood. Centre of fine dairy district. Alt. 256. Pop. 2,318.

SPECIAL OPPORTUNITIES.—Manufactures requiring hardwoods; foundry, first-class hotel. Exemption from taxes and other privileges to new industries according to payroll. Write the Mayor.

ALLISTON (Simcoe Co.), on G.T.R., C.P.R., 49 miles n.w. of Toronto. Hotels, Windsor, Dominion. 4 churches (Ang., Meth., Pres., R.C.), public and high school, park, 2 chartered banks, 1 private. Industries, "silent salesman" factory, silverplate, woollen mill. 2 flour mills, 2 machine shops, lumber yard, brick yard, electric light and waterworks. Alt. 723. Pop. 1,500.

SPECIAL OPPORTUNITIES.—Nursery garden. To manufacturers town offers free sites, free water, and fixed assessments. Write Pres. Bd. Trade.

TALMONTE (Lanark Co.), on Mississippi River, 30 miles w. of Ottawa, on C.P.R. Hotels, Davis, Belmont. 5 churches, town hall, 3 banks, park. Town owns elec. light system. Water power, 3,500 h.p. available. Industries include woollen, shoddy and knitting mills, soap works, iron works. Alt. 399. Pop. 2,700.

SPECIAL OPPORTUNITIES.—Textile factory, stove and furnace foundry. Inducements on application. Write Chairman Publicity Committee.

AMHERSTBURG (Essex Co.), on M.C.R., at head of Lake Erie, on Detroit River. D.B.I. ferries to Detroit, 18 miles. Hotels, Amherst, Lakeview, Union. Two banks, auto factory, knitting factory. Limestone quarries and soda ash plant in neighborhood. Alt. 593. Pop. *2,560.

SPECIAL OPPORTUNITIES.—Lumber and planing mill, manufactures of all kinds. Reasonable encouragement offered to new industries. Write Town Clerk.

ARNPRIOR (Renfrew Co.), on C.P.R., G.T.R., 32 miles w. of Ottawa, at confluence of the Madawaska and Ottawa Rivers. Hotels, Campbell, McPhee. 2 banks, 2 cheese factories, bricks and tiles, woollen mill, 2 lumber mills, builders' factory, 2 planing mills, mineral water factory, felt mill, cabinet factory. Electric power. Lead mines at Galetta, 5 m. Good bass fishing on river known as Lac des Chats. Alt. 301. Pop. 4,450.

AURORA (York Co.), 25 miles n. of Toronto, on G.T.R. and Toronto and York Radial Ry., connecting with Can. Nat. Ry. Hotels, Queen's \$2, Royal, Wellington. 5 churches, public and high schools, 2 banks. Town owns elec. light and water systems. Power from Niagara. Industries, planing mill, flour mill, tannery, boots and shoes (2), pulleys and clutches, agricultural implements, office furniture. Alt. 886. Pop. 2,500.

SPECIAL OPPORTUNITIES.—Cheap power. Good labor conditions. Write Sec. Bd. Trade.

AYLMER (Elgin Co.), 25 miles from London, on G.T.R., Wabash, M.C.R. Hotels, Brown, Mansion, Central. 6 churches, public school, collegiate institute, 2 banks. Industries include canning factory, foundry, saw mills, bricks and tiles, butter and cheese, 3 builders' factories, condensed milk, shoes, pumps, and scales, machine shops, electric light, domestic water and fire plant owned by town. Surrounded by rich farming, dairying and fruit country. Alt. 2,300. Pop. 2,350.

SPECIAL OPPORTUNITIES.—Shoe factories, pork factories, cheese factories, creameries, woodenware, canning and evaporating plants. Liberal inducements offered in taxation, water, light, etc. Natural gas, 15c. to factories, 30c. to consumers. Write Sec. Bd. Trade.

BARRIE (Simcoe Co.), on n. side of Kempenfeldt Bay, Lake Simcoe, county town on G.T.R. (Camp Borden 10 miles.) Steamboats to Orillia, Jackson's Point, Peninsular Park, etc. Hotels, Barrie, Simcoe and 9 others. 11 churches, 4 pub., 1 sep. school, collegiate institute, Carnegie library, 3 parks, armoury, hospital, 1 loan and savings co., 4 chartered banks, 1 private bank. Industries, 2 builders' factories, tannery, 3 machine shops and boiler works, bricks, carriages, flour mill, gas producers and gas engines, wicker works, shingle mill, boots and shoes, excelsior, creamery. Govt. hydro power. Surrounded by rich mixed farming and dairying district. Splendid summer resort. Sailing, boating, canoeing, bathing, etc. Alt. 726. Pop. 7,200.

SPECIAL OPPORTUNITIES.—First-class summer hotel, clothing, whitewear, furniture, woodenware, woollen mill. To bona-fide industries town offers free sites, free water and fixed assessments. Other liberal inducements on application. Write Sec. Bd. Trade.

BELLEVILLE (Hastings Co.), on Moira River, on n. shore of Bay of Quinte, Lake Ontario, on G.T.R., Can. Nat.R. and C.P.R., on line of R.& O., Lake Ontario Nav. Co. and other lake S.S. Hotels, Quinte \$2.50 up and others. 10 churches, high school and 6 others, Albert College, Ontario Business College, St. Agnes' School. Public library, armoury, 2 parks, 7 banks. City owns gas and waterworks. Govt. Hydro-elec. light and power. Industries, 40, include cement works, locks and hardware specialties (2), nuts, bolts and horseshoes, canning, mining and hoisting machinery, foundry and boiler works (2), flour mills, stoneware, pottery, corsets, distilleries, shingle machines, soda water, shirts, furniture, paper, vinegar, and jams, creameries, evaporator, fruit machinery, cold storage (2), limestone quarries, ferro-molybdenum, talc and fluorspar mines nearby. Alt. 251. Pop. 11,893.

SPECIAL OPPORTUNITIES.—Smelter, concentrated milk products, rubber tires for commercial trucks, bricks, road materials. City offers to manufacturers free site and fixed assessment for ten years. Cheap power. Good labor conditions, cheap living. Write Sec. Bd. Trade.

BLENHEIM (Kent). Junction pt. of Pere Marquette Ry. Coal distributing pt. for Rondeau Harbor on Lake Erie

5 m. Hotel Sheldon \$2. 2 banks, elevators, bricks and tile. Nat. gas 25c. per M. Hydro-Elec. power. Good boating, fishing and bathing at Rondeau Provincial Park, 10 m. Surrounded by fine agricultural country, producing tobacco, beans, seed corn, peaches, etc. Alt. 651. Pop. 1,600.

BOBCAYGEON (on 2 islands between Pigeon Lake and Sturgeon Lake, in Victoria Co.), on C.P.R. Hotel, Rockland. 5 churches, 2 public schools, bank. Town owns elec. light system. 2 trains daily and week-end special to and from Toronto, 85 miles. Industries, large flour mill, lumber mill. Centre of summer tourist district. Alt. 854 (250 ft. higher than Georgian Bay). Pop. 953.

BOWMANVILLE (Durham Co.), on Lake Ontario, 42 miles e. of Toronto, on main lines of G.T.R., C.P.R., Can. Nat. Ry. Terminus of proposed Toronto & Eastern Elec. Ry. Hotels, Bowman, Balmoral, \$2. 5 churches, 2 public schools, 1 high school. 3 banks. Gravity system supplies pure spring water. Sewerage plant. Govt. Hydro-elec. power. Industries include Goodyear Tire and Rubber Co. (750 hands), Dominion Piano and Organ Co. (200 hands), Bowmanville Foundry Co. (100 hands), glove factory, canning works, barley mill, flour mill, 2 cooperages. Fine natural harbor capable of accommodating largest lake vessels. The centre of a very rich apple-growing, mixed farming and dairying district. Popular summer resort. Good boating of all kinds on lake and in harbor and lagoon, extending $\frac{1}{4}$ mile inland. Good bathing, safe, sandy beach. Many fishing streams in vicinity. Alt. 150. Pop. 4,000.

SPECIAL OPPORTUNITIES.—Automobile factory, brick yard, saw mill, canning factory. Abundant elec. power available at \$12 to \$25 per h.p. Labor conditions excellent, low cost of living, cheap rents. Town offers liberal concessions to new industries. Write Sec. Industrial Commission.

BRACEBRIDGE (Muskoka District), on Muskoka River, 120 miles n. of Toronto, on G.T.R., daily boats from lake points in summer. Hotels, Queen's, Albion, British Lion. Court house, library, 2 parks, 2 banks. Town owns light and water systems. Industries include tanneries (2), woollen mills, launches, sashes and doors (2), foundry, lumber mills (3). District supplies tanbark and all kinds of wood. Alt. 817. Pop. 3,500.

SPECIAL OPPORTUNITIES.—Boot factory, cloth factory, furniture, woodenware, automobiles, office sup-

LONDON.



COMMERCE—All civic records show progress, materially increased in past 2 years. Population 58,000. Home market 1,000,000 people. Dominion centre for economic distribution. Educational and ecclesiastical centre. Presents to-day unlimited opportunities for money and enterprise.



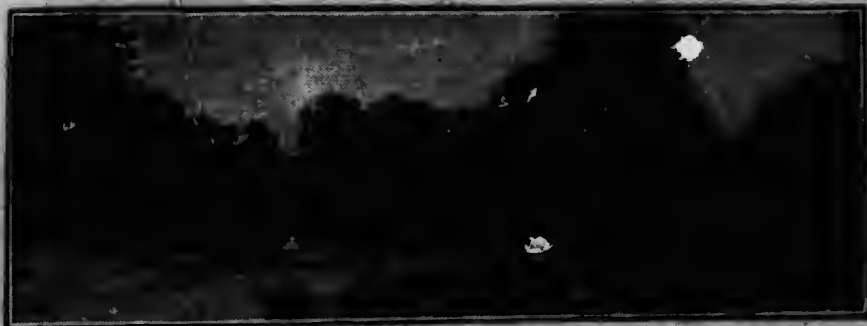
RESIDENTIAL—A City of Homes, where life is worth living. Has all the conveniences of a modern city, and attractions peculiarly its own. Picturesque surroundings. Farmers' market three times a week. 80 per cent. of industrial workers own their homes.

Read description of London on page 68

For free reports on any

GORDON PHILIP - INDUSTRIAL

CANADA'S ECONOMIC MANUFACTURING AND DISTRIBUTING CENTRE



RECREATION—"The Forest City," famed for the beauty of its parks, avenues and boulevards, and for its hospitality. A convenient convention centre, with 4 trunk and 7 branch lines, including city-owned road to London's harbour on Lake Erie—Port Stanley.



MANUFACTURES—241 factories on full time and annually increasing plants. Unusual combined advantages, cheap power (Hydro), cheap sites, plentiful labor, unsurpassed transportation, competitive water route, fixed assessment, nominal taxes and other inducements.

Read description of London on page 68

any line of industry, write

COMMISSIONER, LONDON, ONTARIO

plies, chairs. Govt. Hydro-elec. power. Town offers tax exemptions, and in some cases free sites. Write Town Clerk.

BRAMPTON (Peel Co.), 21 miles w. of Toronto, on G.T.R. and C.P.R. Hotels, Victoria, Queen's. 6 churches, high and public schools, public library, park, 3 banks. Town owns electric light, waterworks and sewerage. Niagara Hydro elec. power. All main streets paved with asphalt block. Industries include 4 cut-flower growing concerns—one covering 24 acres and employing 250 hands, boot and shoes (3), paper boxes, hosiery, loose leaf factory (largest in Canada), knitted goods, Pease Foundry Co. (furnaces), 2 planing mills, 2 flour mills, gummed paper, pressed brick, jam factory, dextrine products. Neighborhood supplies brick clay and sand. The centre of a rich dairying and apple-growing district. Large horse, cattle and hog centre. Alt. 712. Pop. 4,000.

NOTE.—\$70,000 high school being erected. Factory being erected by Hercules Rubber Co., Ltd.

SPECIAL OPPORTUNITIES.—Steel store-front foundry, automobiles, automobile tops and tires, bricks and tiles, boots and shoes, chairs, carriages, leather and wood-working industries, textiles, cigars. To manufacturers excellent shipping facilities. Town offers cheap water and power, tax exemption and other liberal inducements on application. Write Sec. Bd. Trade.

BRANTFORD (Brant Co.), on Grand River, 60 miles s.w. of Toronto, 80 miles w. of Buffalo, N.Y. On G.T.R. main line and 3 branches; T.H. & B.R., connecting with C.P.R. and Mich. Cent. Ry.; L. Erie & N.R., operating with C.P.R. at Galt; Lakeport at Pt. Dover, on Lake Erie, 25 miles s. Elec. rys. to Hamilton (20 miles), Paris and Galt. Hotels, Kerby, Bodega, Belmont and 4 others. 26 churches, 7 public schools, 2 separate, collegiate institute, school for blind, Indian Institute, \$160,000 Y.M.C.A. and Y.W.C.A. bldg., Soldiers' home, public library, large parks (115 acres), 11 banks. City owns water and sewerage works, hydro-electric system. Niagara Hydro-elec. power available at \$15 to \$28 per h.p. Nat. gas by private co. Industries, over 80 factories, including large agric. implement factories, iron and wooden industries, clothing, clay and cement products, automobiles, electrical fittings, silk mills, steel plant, automatic scales, motor trucks; 22 wholesale houses. Centre of a mixed farming district. Neighborhood supplies shale, brick clay and sand. Social, golf and country clubs. Alt. 691. Pop., including immediate suburbs, 32,000.

SPECIAL OPPORTUNITIES.—Industries making goods to sell direct to consumer. Silk mills. Steady demand for mechanics, expert machinists, builders, domestic servants and laborers. Cheap elec. power. Special industrial water rate. Fixed tax rate for 10 years. Some free sites available. No labor troubles. Write Sec. Greater Brantford Bd.

BRIDGEBURG (Welland Co.), on Niagara River, opposite Buffalo, N.Y., on C.P.R., G.T.R., Mich. Central Ry., N.Y. Central Rys., Wabash, T.H. & B. and Pere Marquette. On route of S.S. lines on Niagara River. International car service to Buffalo every 40 min. Hotels, Spain's, Barnea, Royal and 2 others. 5 churches (Epis., Meth., Pres., R.C.), park, library. Town owns water and sewerage systems. Niagara Elec. power., Gas Co. Nat. gas at 40c. per M. cub. ft., bank. Industries include foundry, steel works, telephone construction co., display fixtures, skirt supporters, account registers, stoves, varnish, shaving powder, hot-air registers, patent medicines, typewriters, caskets. A fruit growing district. Good scenery and fishing. Alt. 587. Pop. 2,000.

BRIGHTON (Northumberland Co.), on Presque Isle Bay, on Lake Ontario, 24 miles e. of Cobourg, 20 miles w. of Belleville; on Can. Nat. Ry., G.T.R., C.P.R. Steamers of R. & O. Nav. Co. and Lake Ontario and Bay of Quinte S.S. Co. to Toronto, Montreal, Rochester and principal U.S. and Canadian ports. Fine natural harbor, with 18 ft. of water. Hotels. Clarendon, \$2, Presque Isle (summer only), \$1.50, 5 churches, high and public schools, town hall, elec. light. Town owns gravity waterworks system. Govt. Hydro-elec. power. Bank. Industries include boats, canneries (3), sprays, foundry, machinery, evaporators (2), flour and feed mills (2), cooperage. Centre of an agricultural and fruit district. Neighborhood supplies pine, hemlock and spruce. Popular summer resort at Presque Isle Point, 3 miles across the bay, with good fishing, boating and bathing. Duck shooting in season. Alt. 303. Pop. 1,500.

BROCKVILLE (Leeds Co.), on Lake Ontario, at outlet to St. Lawrence River, on Can. Nat. Ry., G.T.R., C.P.R., 73 miles from Ottawa, 126 miles from Montreal. Hotels, Revere, Central and others. All S.S. lines going east and west call. 2 public wharves, 20 feet of water; 14 churches, court house, general hospital, St. Vincent de Paul hospital, insane asylum, opera house, public library; schools—5 public, 1 manual training, 1 domestic science, 1 collegiate institute, St. Albans' Boys' School; St. Lawrence Park, Victoria

Park, Fulford Athletic Grounds. Headquarters Eastern Ontario Dairymen's Assn. 6 banks. Industries include stoves and hardware, carriages, paper boxes, automobiles, suspenders, agricultural implements, hats, biscuits and confectionery, engines, motor boats, 2 lumber companies, mineral waters, cold storage produce co., condensed milk. Local steamer plies several times daily to summer resorts on St. Lawrence River, where fishing, maskinonge, bass, pike, etc., is good. Bass and salmon trout fishing at Lakes Rideau, Charleston, Beverley, 2 hours by Can. Nat. Ry. Pop. *9,372.

SPECIAL OPPORTUNITIES.—To new industries town offers tax exemptions and free sites, with Govt. hydro-electric power, 1,000 h.p. Write Sec. Bd. Trade.

BURLINGTON (Halton Co.), at head of Lake Ontario, 30 miles w. of Toronto, on G.T.R., C.P.R. (freight only), electric ry. to Hamilton, 10 miles w.; Oakville, 12 miles e.; connection with Hamilton and Toronto Steamboat Co. at canal piers. Hotels, Brant, Queen's, Raymond. 5 churches, high and public schools, park. Electric light and power. Town owns water-works and sewerage system. 2 banks. Industries include cannery, 2 basket factories, chemical works, 2 planing mills, evaporator. A rich fruit-growing district. Alt. 281. Pop. 2,400.

SPECIAL OPPORTUNITIES.—Industries of all kinds. Abundant elec. power. Inducements on application. Write Clerk of the Municipality.

CAMPBELLFORD (Northumberland Co.), 30 miles w. of Belleville, on G.T.R. and Trench River. Hotels, Windsor \$2.50; Gibson; British America \$1.50; St. Lawrence. 5 churches, public and high schools, library, 2 banks. Town owns elec. light and power, water and sewerage systems. Industries include bridge and shell works, woollen mills, shoes, pulp and paper mills, flour mills, elec. power co. Surrounded by rich fruit and mixed farming district. Good boating and fishing nearby. Alt. 596. Pop. 3,000.

CARLETON PLACE (Lanark Co.), on C.P.R., 27 miles from Ottawa. Hotel, Mississippi, \$2.50. Industries include stoves, knitted goods, flour mills, lumber co., C.P.R. shops, employing 150 men. Good fishing and hunting. Alt. 447. Pop. 4,000.

SPECIAL OPPORTUNITIES.—Furniture factory, foundry and machine shop, cigar factory, farm implements, woollen mill. Exemption from taxes and free sites offered to new industries. Write Sec. Bd. Trade.

CHATHAM (Kent Co.), on Thames River, 45 miles e. of Detroit, Mich., on G.T.R., C.P.R., Wabash, Pere

Marquette and Mich. Central Rys. Elec. ry. to Wallaceburg, 18 miles, and Lake Erie, 14 miles. Deep water navigation gives communication with Great Lakes. Hotels, Garner, Sanita (mineral baths), Rankin, and others. Churches of all denominations. 4 large public schools, collegiate institute, Ursuline College boarding school, business college. City and county buildings, market hall, armouries, 2 large parks. Govt. Hydro-elec. light and power, unlimited quantity. Water and sewerage systems. Nat. gas, 12c. per 1,000 ft. for power; \$3.00 per h.p. per year of 300 days for 10-hour service; 25c. for domestic use. 2 daily papers, 3 theatres, 5 banks. Industries, about 40 factories, including International Harvester Co., automobiles, pumping and well machinery, pad and textile works, bricks and tiles, wheels, malleable steel, machine shops, carriages, flour mills, woollen mills, lumber mills, reinforced concrete, springs and axles, etc. Centre of a very rich mixed farming and fruit district (peaches, grapes, apples, etc.). Numerous summer resorts with fine shooting, fishing, etc., easily reached by boat or electric ry. Moderate climate. Pop. 13,000.

SPECIAL OPPORTUNITIES.—Cheap power. To new industries city offers free sites with railway siding connections. Good labor conditions. No unions or strikes. Other inducements on application. Write Chairman Industrial Committee, or Pres. Bd. Trade.

CHESLEY (Bruce Co.), on north branch of Saugeen River, 122 miles n.w. from Toronto, on G.T.R. Hotel, McDonald. 8 churches, public and high school, 2 banks. Govt. Hydro-elec. power and light. Industries include saw mill, 2 flour mills, woollen mill, knitting factory, shell factory, 2 furniture factories, iron and brass bedsteads, bricks and tiles, chairs, mattresses, church furniture, machine shop, butter factory. Alt. 980. Pop. 1,975.

SPECIAL OPPORTUNITIES.—Special lines of furniture, starch factory, shirt factory. Town offers tax exemptions, free sites. Write Town Clerk.

CLINTON (Huron Co.), 130 miles w. of Toronto, 50 miles n. of London, on G.T.R. Hotels, Rattenbury, Normandie. 8 churches, public and model schools, collegiate institute, town hall, library, park, 2 chartered banks. Town owns light and water systems. Govt. Hydro-elec. power, 600 h.p. available, rate \$40. Industries, planing, flour and knitting mills, automobiles, pianos and organs, boys' clothing, salt. Good fishing and scenery. Alt. 582. Pop. 2,500.

SPECIAL OPPORTUNITIES. — Woodworking plant, creamery or cheese factory. Special inducements on application. Good labor conditions. Write Town Clerk or Sec. Bd. Trade.

COBOURG (Northumberland Co.), on Lake Ontario, 70 miles e. of Toronto, on G.T.R., Can. Nat. Ry. and C.P.R. Fine deep-water harbor. Steamship connections with Rochester, 55 miles; Toronto, 60 miles; Montreal and principal U.S. and Canadian ports. Daily all-year ferry service to Rochester, carrying 28 loaded cars. Hotels, Dunham, British, Arlington, Columbian and Cedarmere (summer only), and others; 6 churches, public and separate schools, magnificent town hall containing opera house, jail, house of refuge, Provincial Asylum, 2 large parks, horse show grounds, 4 banks. Govt. Hydro-elec. power. Electric light, water and sewerage systems. Industries include Crossen Car Works, John Dick Co., Woollen Mills, Cobourg Matting Factories (2), woodworking, wire fences, canning and smaller industries. Neighborhood supplies various kinds of lumber. Surrounded by very rich mixed farming, dairying and apple-growing district. Popular summer resort, frequented by families from U.S.A. and Canadian cities. Good fishing and shooting at Rice Lake, 12 miles north. Good boating and golf links. Alt. 295. Pop. 5,300.

SPECIAL OPPORTUNITIES.—Excellent shipping facilities, cheap electric power and cheap fuel (insured by ferry service to Rochester). Good factory sites on Can. Nat. Ry., C.P.R., G.T.R. and lake front. Labor is cheap. Town offers liberal inducements on application. Write Sec. Bd. Trade.

COLLINGWOOD (Simcoe Co.), port on Georgian Bay, on G.T.R. Direct S.S. communication with all Canadian and U.S. ports. 20 feet of water in harbor, one of the best protected on chain of lakes. Hotels, Globe, Arlington and 3 others. Town owns waterworks, electric light, sewerage, and Hydro-elec. power. 4 public schools and 1 separate school, collegiate institute, public library, Historical Soc. and Museum, Y.M.C.A., 2 parks, armoury, 2 skating and curling rinks, Govt. rifle range, Govt. Fish Hatchery, 5 banks, fine post office. Largest steel shipbuilding yards and dry docks in Canada—largest freight vessels in British Empire have been built here; wire nail and fencing works, 1 planing mill, ships' large steel billet plant, foundry and machine shops, biscuits, brooms, fruit and vegetable cannery, tannery, bricks, small wooden and metal boats, flour mill, grain elevator, cold storage and

grocery warehouse, and the largest fruit and vegetable farm in Canada. Alt. 587. Pop. 7,700.

SPECIAL OPPORTUNITIES.—There is a very large local trade in rivets, rods, plates, angle iron, etc. Any industry, particularly those working in steel and wood. Grain elevator for distribution of grain to milling centres. To bona-fide industries town offers free site, fixed assessments and other liberal inducements. Cheap hydro power. Good openings for mechanics and their families. Write Sec. Bd. Trade.

CORNWALL (Stormont Co.), on St. Lawrence River, 67 miles w. of Montreal, 55 miles e. of Ottawa. On C.P.R., G.T.R. and Ottawa and N.Y. Ry. (operated by N.Y.C. Ry.). Terminus of Cornwall Canal. S.S. connection with principal ports. Hotels, King George \$2.50, New Windsor and 2 others. 9 churches, public, separate and high schools, commercial college. Town hall, 3 parks. Elec. light and power and gas. Town owns water and sewerage systems. Water power, about 200 h.p. 4 banks. Industries, furniture, cotton, bedsteads, lacrosse, chairs, paper, pulp, and paper mill. A mixed farming and dairying district. Good supply of lumber. Fishing and hunting. Summer resort at Stanley Islands, 8 miles distant. Pop. with suburbs, 9,000.

DESERONTO (Hastings Co.), on Bay of Quinte (Lake Ontario), 130 miles e. of Toronto, 200 miles w. of Montreal. On Can. Nat. Ry., connecting with G.T.R. and C.P.R. Steamship connection with all Canadian and U.S. ports on St. Lawrence River and Great Lakes. Hotels, Arlington, Deseronto, Stewart \$1.50 to \$2.00. 4 churches, high and public schools. Public library, recreation park. Town owns gas, sewerage and water systems. Fire department. Govt. hydro-electric light. Abundant electric power, cheap rates on sliding scale. 2 banks. Industries, include blast furnace (making charcoal pig iron), cannery, broom and other handles, domestic glass cutting and engraving. Extensive water front. Centre of a rich fruit-growing district. Neighborhood supplies abundant lumber. An attractive summer resort. Good bathing, boating and fishing. Alt. 252. Pop. 2,300.

SPECIAL OPPORTUNITIES.—All industries, especially those requiring large supplies of raw materials in bulk. Machine shop, foundry, shipbuilding, cement works, textiles, smallwares of all kinds. Cheap coal and elec. power. No labor troubles. Cheap labor, male and female. Cheap sites and other liberal inducements on application. Write Pres. Bd. Trade.

DRESDEN (Kent Co.), on Sydenham River, navigable, and Pere Marquette Ry. Hotels, Westcott, Queen's. Public and high schools, library, 2 banks, grist mill, foundry, builders' factory, bentwood, 2 flour mills, cannery, flax mill, bricks, and tiles, planing mill, 2 elevators. Niagara Elec. Power, natural gas. Good farming country, producing corn, tomatoes, potatoes, sugar beets, tobacco. Alt. 604. Pop. *1,561.

DUNDAS (Wentworth Co.), on G.T.R., T., H. & B. Ry. Electric Ry. from Hamilton, 5 miles, hourly service. Desjardines Canal connecting with Lake Ontario. Hotels, Collins, Melbourne, Osborne and others. 5 churches, public, separate and high schools, armoury, public library, 25-acre park. Cataract Power Co., Govt. hydro-elec. power, nat. gas at 35c. per M ft., water system, 3 banks. Industries include quarry, tanneries, small tools, baskets, gloves, malt, clothing, hosiery, doors, yarns, machine tools, builders' factory, knitting factory, flour mill, cement brick, barber supplies, church and school furniture, willow furniture, gasoline engines. Alt. 316. Pop. *5,020.

SPECIAL OPPORTUNITIES.—Cheap manufacturing sites, with assessment fixed at cost of land. Write Chairman Industrial Committee.

DUNNVILLE (Haldimand Co.), on Grand River, 40 miles w. of Buffalo, N.Y.; 34 miles s.w. of Hamilton. On G.T.R. and T., H. & B. branch railway, 15 miles, on main line connected with Lake Erie (5 miles) by Grand River, navigable to Dunnville. Hotels, Victoria, Savoy, Price's. 5 churches, park, town hall. Town owns sewerage system. Elec. light by private co. Elec. power at \$25. Nat. gas, 20c. to manufacturers; 35c. domestic. 3,000 h.p. water power available. 3 banks. Industries, knitting mills (2), hammocks, engines, foundry, bricks, woollen mills, ice, sewing machines, cannery, evaporator, planing mill, flour mills (2), machine shops (2), cement blocks and bricks, boats. Neighborhood supplies lumber and stone. Good scenery, fishing and shooting. Gun club, tennis, etc. Pop. 3,500.

NOTE.—T., H. & B. run car ferry from Dunnville to Ashtabula, O. Dom. Govt. have dredged Grand River to Dunnville to permit large boats to enter here. Hydro-Elec. Ry. system will include Dunnville in circuit.

SPECIAL OPPORTUNITIES.—Good sites available for shipbuilding, steel works, etc. Manufacturers can develop power from nat. gas for \$7 per h.p. Liberal inducements to new industries. Write Sec. Bd. Trade.

DURHAM (Grey Co.), on Saugeen River, C.P.R. and G.T.R., 28 miles south of Owen Sound. Hotels, Hahn,

Middaugh, Central. 5 churches, public school. Carnegie library, 2 banks. Industries include grist mill, planing mill, oatmeal mill, furniture factory, Portland cement works, saw mills. Hydro-Elec. power from Eugenia Falls (25 miles). Pop. *1,579.

SPECIAL OPPORTUNITIES.—Sash and door, iron bedstead, mattress and bed spring factories, wagon builder and woodworker. Tax exemptions, free sites, loans without interest and other inducements offered. Developed and undeveloped water power available. Low tax rate, cheap living. Write Mayor.

ELMIRA (Waterloo Co.), on C.P.R. and G.T.R., 12 miles n. of Kitchener. Hotels, Ziliax House and 1 other. 7 churches, high and public schools, 1 free public library. Municipality owns electric light and waterworks. Niagara hydro-elec. power. 2 banks. Industries include furniture factory, foundry and machine shops, creamery, talking machines, rubber shoes, felt and leather boot and shoe factories, transmission supplies (wood split pulleys, hangers, etc.), saw and planing mills, brick yard, 2 grain elevators (cap. 125,000 bushels). Surrounded by very rich general mixed farming district. Alt. 1,142. Pop. 2,250.

SPECIAL OPPORTUNITIES.—Factory for skirts, white-wear, cuffs and collars. Any industry using dairy products, woodworking machinery factories, carriage works, any leather industry, saw mill, grist and flour mill. Factory sites on C.P.R. and G.T.R. Town offers free sites, tax exemptions, free water and other inducements. Write Chairman Transportation Committee.

ELORA (Wellington Co.), at confluence of Grand and Irvine Rivers, on C.P.R. and G.T.R., 13 miles n.w. of Guelph. Hotels, Commercial, Iroquois. 4 churches, high and public schools, Carnegie library, armoury, 2 banks, Niagara elec. power and light. Industries include cabinet, carriage, sash and door, and agricultural implements factories, saw mill, 2 furniture factories, tannery, hydrate lime, white lime factory. Beautiful surrounding scenery. High quality limestone nearby. Alt. 1,270. Pop. 1,197.

SPECIAL OPPORTUNITIES.—Novelties, whitewear, overalls, knitting mill, machine shops, furniture factories. Write Pres. Bd. Trade.

ESSEX (Essex Co.), on M.C.R., Electric Ry. to Kingsville, 12 miles; Windsor, 16 miles, and Leamington, 17 miles. Hotels, Grand Central, Aberdeen. 5 churches, public and high schools, 2 banks, 2 garages, library. Industries canning and preserving co., bricks and tiles,

DESCRIPTIONS OF TOWNS

grist and flour mill, lumber co., soft drinks, foundry, 2 elevators, farm tractor, baskets. Natural gas 30c. per M ft. Alt. 643. Pop. 1,398.

SPECIAL OPPORTUNITIES.—Boring for oil, gas or petroleum, farm implements, tiles, automobile top factory. Town offers tax exemptions to new industries. Write Sec. Bd. Trade.

EXETER (Huron Co.), on G.T.R. Hotels, Central, Metropolitan. 4 churches, 2 parks, 2 banks, Carnegie pub. library. Town owns waterworks. Hydro-elec. power. Industries, flour mill, creamery, flax mill, gasoline engines, wood-working factories, builder's supplies, salt wells, canning, clothing, wholesale stationery. Alt. 872. Pop. 1,608.

FENELON FALLS (Victoria Co.), on G.T.R. Steam-boats to Lindsay, Coboconk and Rosedale. Hotels, Mansion, Brooks, McArthur. Churches of all denominations, public and high schools. Town owns elec. light and power plants. Water power close to timber supplies. 2 banks. Industries, 2 flour mills, saw and shingle mills, boats, 2 planing mills. Summer resort. Alt. 845. Pop. 1,000.

SPECIAL OPPORTUNITIES.—Tannery, knitting and woollen mills, woodenware, shoe factory. Cheap power. Free sites. Write Pres. Bd. Trade.

FERGUS (Wellington Co.), on Grand River, 13 miles n.w. of Guelph, on G.T.R. and C.P.R. Hotels, Commercial and 2 others. 5 churches, high and public Schools, opera house, library. Town owns water systems and Niagara elec. power. 2 banks. Industries, farm accessories (3), cereal mill, lime and building stone, marble works. Pop. 2,000.

FOREST (Lambton Co.), on G.T.R. 3 banks, 2 hotels, library, public and high schools. Industries include saw mill, flax mill, builders' factory, canning factory, stave mill, basket factory, flour mill, foundry, machine shop. Alt. 711. Pop. *1,500. Write Pres. Bd. Trade.

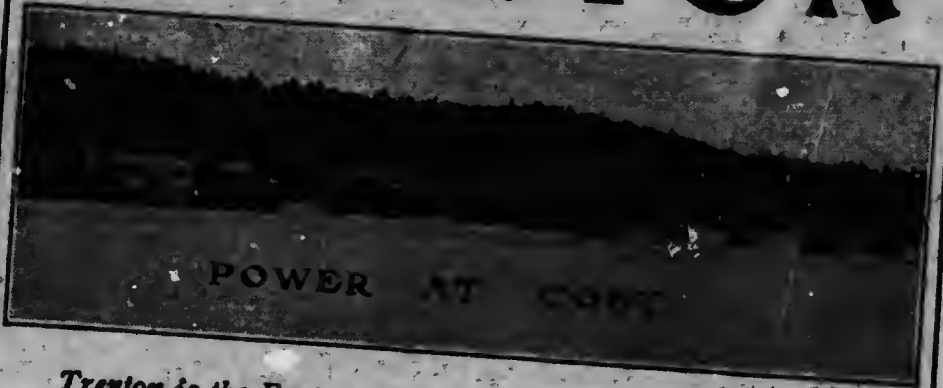
FORT ERIE (Welland Co.), on Niagara River, $\frac{1}{2}$ mile from Buffalo, N.Y., 100 m. s. of Toronto (by rail). On G.T.R. and Mich. Central Ry. Hotels, King Edward \$2, Anglo-American, Queen's. 5 churches, public school, city hall, public library. Town owns elec. light and water systems. Abundant elec. power. Nat gas at 40c. per M cub. ft. Bank, 5 stores. An agricultural and fruit-growing district. Summer resorts nearby with fishing, bathing, etc. Pop. 1,500.

SPECIAL OPPORTUNITIES.—Building houses to new industries town offers exemptions in tax water rates. Write Town Clerk.

FORT WILLIAM (Thunder Bay District), at head of lake navigation on Lake Superior, on Kaministiquia River, bulk-breaking point for all incoming and outgoing freight of Western Canada, lake terminus of Can. Nat. Ry. and C.P.Ry. and Mt. McKay and Kakabeka Falls Ry. Inter-city elec. rg. to Port Arthur (3 m.). All lines of passenger and freight boats on upper lakes converge here. Hotels, Avenue \$3.50 up, St. Louis \$3 up, Empire \$2.50 up and several others. 15 churches, 10 schools, collegiate institute, Y.M.C.A., 3 fire halls, court house, registry office, public library, 2 hospitals, grain exchange, city hall, 13 parks. Municipality owns 31 miles of street railway, telephone, light, water and sewerage systems. Total value of utilities over \$4,000,000. Hydro-elec. power 45,000 developed, 100,000 h.p. still available, rate for 24 hours' service \$25 per h.p. per ann. Loch Lomond, area 10 sq. miles, 358 ft. above city level, (960 feet above sea level) gives gravity water supply. 10 chartered banks, total elevators (including Port Arthur) 25, combined storage capacity 52,370,000 bush. Industries include Ogilvie Flour Milling Co., Canadian Car and Foundry Co., stove works, sashes and doors, plants, sashes and doors, hardwood flooring and interior finish, brooms, machine shops, stock feed manufacturing, starch and syrup making, Canada Iron Foundries, pipe and wheel work, shipbuilding, Seaman-Kent Co., wooden utensils and novelties; National Tube Co., tube mills, Canada Starch Co., Steel Company of Canada, nails, etc.; Great Lakes Dredging Co., wooden ships. Headquarters of Kaministiquia Power Co., headquarters of Board of Grain Commissioners. Site of the Canadian Grain Sample Market. Greatest coal handling centre in Canada. Fort William collects the greatest in-turn of freight of any city in Canada (C.P. Ry. official statement). Minerals in district include iron, copper, silver, gold, pyrites. Pulpwood is abundant, also pine, tamarack, poplar, birch and jack-pine. Fine moose and deer hunting, some caribou and beaver. Brook and Lake trout plentiful. District has great agricultural possibilities, particularly adapted for growing roots and small fruit. Beautiful summer resorts on Lake shore, atmosphere always cool. Pop. 25,000. Write Secy. Bd. Trade, or City Clerk.

SPECIAL OPPORTUNITIES.—Heavy iron and steel industries, stove and barrel making, vitrified brick, box factory, radiators and furnaces, chemical works, elevator machinery plant, brass foundry, tile works, agricultural implements and machinery, sashes and doors, interior finish plant. Write Secretary Bd. Trade.

TRENTON



Trenton is the Eastern Centre of the Hydro-Electric Power Development. It was chosen as the site of the largest chemical plant in America

We Offer to Manufacturers

1. **LOCATION**—Strategic situation at mouth of Trent Canal on Lake Ontario, 100 miles east of Toronto, and 230 miles west of Montreal.
2. **SHIPPING FACILITIES**—Three Transcontinental Railways with compulsory interswitching; Direct S.S. communication with all U.S. and Canadian Ports.
3. **POWER**—Unlimited cheap Electric Power developed at your door.
4. **LABOUR**—Plentiful supply, both male and female. Strikes unknown.
5. **LIVING CONDITIONS**—Low cost of living, low rents, no shortage of workmen's houses. Good market.
6. **FACTORY SITES**—Between rail and deep water. Two new transcontinental lines have opened up an area of factory sites unsurpassed anywhere in Canada.

LIBERAL INDUCEMENTS TO BONA-FIDE INDUSTRIES

Read the description of Trenton on page 92

Then write for full information and specific reports on the openings for any line of industry to

**THE MAYOR; OR SECRETARY BOARD OF TRADE
TRENTON, ONTARIO**

GALT (Waterloo Co.), on C.P.R.; G.T.R., 25 miles from Hamilton, 60 miles from Toronto. Electric Ry. to Preston, 3 miles, Hespeler, 5 miles; Paris, 12 miles; Kitchener, 13 miles; Waterloo, 14 miles; Brantford, 21 miles, and to Port Dover on Lake Erie, 51 miles. Hotels, Iroquois, Royal. 9 churches, public library, Y.M.C.A., 4 large parks, 6 banks. 50 factories, including aerated waters, beds, boilers, boots, boxes, brass goods, builders' supplies, edge-tools, engines, farm implements, hats, leather, lime, lumber, malt, pumps, safes, soap and oils, stoves, nails, taps, under wear, wheels, silk and cotton labels, cement machinery, metal goods. Rich agricultural district. Neighborhood supplies lumber, limestone and sand. Alt. 927. Pop. 12,000.

SPECIAL OPPORTUNITIES.—Manufactures of all kinds. Sites with railway interswitching sidings obtainable. Tax exemption, loans and free sites. Natural gas 50c. per M ft. Niagara elec. power at 4c. per k.w. Write Sec. Bd. Trade.

GANANOQUE (Leeds Co.), at junction of Gananoque and St. Lawrence Rivers, on G.T.P. Direct S.S. communication with Toronto, Montreal, Rochester and principal Canadian and U.S. ports. Hotels, Gananoque Inn, Provincial, International. 7 churches, 1 high and 3 public schools, yacht and canoe clubs, park, 2 banks. Town owns water, sewerage and fire systems. Public library. Industries, 20, include elec. light and power plant, cheese factory, nails, hammers, gasoline engines, carriage mountings, hardware, steel and wood hames, springs and axles, shovels, grist mill, carriage wheels, rivets, corset steels, bolt and carriage forgings, builders' factory, electric meters, 2 boat builders, 2 paving block granite quarries, iron and brass foundries, harness factories. A popular summer resort. Alt. 300. Pop. *3,764.

NOTE.—Elec. power from Kingston Mills will be installed shortly, providing 1,000 h.p. at low rates.

SPECIAL OPPORTUNITIES.—Cheese box factory, malleable iron works, a good \$1 a day boarding house, planing mill, brick yard. Water power from Gananoque River; elec. power from Kingston Mills. Inducements offered on application. Write Sec. Bd. Trade.

GEORGETOWN (Halton Co.), on G.T.R. and Toronto Suburban Ry. Hotels, Bennett House, Clark House. 5 churches, 2 banks. Govt. hydro-elec. power and light. Industries include 3 paper mills, 2 knitting machine factories, boots and shoes, saw mill, gloves, acetylene gas machines, foundry and machine shop, carriages. Alt. 846. Pop. 1,720.

GODERICH (Huron Co.), county town at mouth of Maitland River, on Lake Huron, 133 miles n.w. of Toronto, on C.P.R., G.T.R.; S.S. connection with Detroit, Sarnia and South and Upper Lake ports. Hotels, Bedford, British and 4 others; Sunset Hotel (summer only). Fine schools and churches. Canoe and Social Club. Niagara elec. power, 4 banks. Industries, flour mill, foundry and machine shop, 2 modern concrete elevators (cap. 2 million bushels), knitting factory, lumber mill, organ and bath fixtures, furniture, builders' factory, salt works, clothing, apple evaporator, road machines, steam boilers, National Shipbuilding Co. The neighborhood supplies limestone, salt, lumber, sand suitable for glass or cement brick, clay suitable for tile and red or white brick, gravel and flax. A favorite summer resort, with a wonderful climate. Alt. 729. Pop. 5,000. Write Sec. Bd. Trade.

GRAVENHURST (Muskoka Dist.), at foot of Muskoka Lake, on G.T.R. Hotels, Albion, Station; for summer boarders and tourists only, Fern Glen, Sunset Pt., Gull Lake, Pine Dale, besides many others boarding houses and summer resorts. 4 sanitariums for consumptives 2 miles away on shore of Muskoka Bay. Waterworks and Govt. hydro-elec. power and light. Industries include soda water, carriages, 2 boatbuilders' factories, 2 lumber and saw mills, Nat. Potash Co. Alt. 850. Pop. 1,600.

SPECIAL OPPORTUNITIES.—Manufactures using pine, hemlock and birch. Factory sites available near G.T.R. Water power, 750 h.p. available, 4,000 to 5,000 h.p. developed. Electric power from South Falls. Town offers to new industries tax exemptions or fixed rate, site. Opportunities for summer cottages on Gull Lake, 300 yards from centre of town. Write Sec. Bd. Trade.

GRIMSBY (Lincoln Co.), on Lake Ontario, 18 miles e. of Hamilton, 18 miles w. of St. Catharines, on G.T.R. Elec. Ry. to Hamilton. 1¼ miles from Grimsby Beach summer resort. Hotels, The Village Inn and Grimsby. 5 churches, public and high school, park. Electric light. Govt. pre-cooling plant. Village owns water system. 3 banks. Industries, 2 canneries, electric fittings, 2 planing mills, large printing works, 2 basket factories, hospital aseptic furniture. A fruit-growing district, famous for peaches, grapes and apples. Alt. 287. Pop. 1,800.

GUELPH (Wellington Co.), on River Speed, 48 miles w. of Toronto, 28 miles n. of Hamilton, on C.P.R., G.T.R. and Toronto Suburban Ry. Hotels, Wellington, King Edward, Royal, Commercial. 14 churches, 10 schools,

collegiate institute. Seat of Ontario Agricultural College and Macdonald Institute (Domestic Science). This institution is visited annually by 50,000 farmers. Annual Fat Stock show held in December, visited by from 10,000 to 20,000 farmers and stock breeders. City owns 8 parks, city hall, light, water and sewerage systems, street ry., and Guelph Junction Ry. (15 miles). Niagara electric power at \$20 per h.p. per ann. Gas for manufacturing purposes, \$1.00 per 1,000 cub. ft. 7 banks, 2 loan and savings cos., 4 wholesale houses. Industries, about 80, including pianos, machinery, carpets, meat packing, clothing, carriages, woodworking, steel and wire goods, food products, clean food counters, steel tubing, metal store fronts, caskets, ironware, brewing, etc., etc. Centre of a rich agricultural district. Trout fishing, shooting, tennis, golf, cricket, etc. Pop. about 18,000.

SPECIAL OPPORTUNITIES.—Any industry except the very heavy lines using coal and iron as raw materials. Radial railway. City offers free sites, low taxes, cash bonus and loans at low rate of interest. Labour conditions ideal. Cheap power, water, gas and elec. light. Write Industrial Commissioner.

HAMILTON (Wentworth Co.), on Burlington Bay, western extremity of Lake Ontario, founded about 1810, on G.T.R., T.H. & B.R., C.P.R. Electric ry. to Grimsby, 18 miles; Brantford, 25 miles; Oakville, 20 miles. S.S. lines to Montreal, Ft. William, Toronto. Hotels, Royal, Connaught, Wentworth Arms, and 30 others. 75 churches, 40 schools, 31 banks, general hospital. City owns water and sewerage systems. Power and light by Niagara Falls System, Cataract Power Co. and Nat. Gas Co. About 500 factories, including steel, iron, cotton and woollen goods, agricultural machinery, tobacco, electrical wires and cables, clothing, store fixtures, stoves, ploughs, elevators, boots, furniture and many other articles. 40 wholesale houses. Centre of fruit district. Beautiful scenery. Aquatic sports, golf, tennis, etc. Alt. 323. Pop. 107,832.

SPECIAL OPPORTUNITIES.—Manufactures of iron and steel. Cheap power. Good labor conditions. Harbor Bd. has reclaimed large section on water front behind revetment wall, with launching depth 18 ft. of water, adjacent to all railway lines. Will lease on reasonable terms to manufacturers. For free pamphlet, write C. V. Kirkpatrick, Commissioner of Industries.

HANOVER (Grey Co.), on Saugeen River, G.T.R. and C.P.R. Hotels, Reid, Queen's, Union. 9 churches, 3 schools, public library, 2 banks. Industries, 8 furniture

DESCRIPTIONS OF TOWNS

factories, bricks, cement, flour mill, shirt factory. Light water and sewerage systems, 600 h.p. water power available. Pop. 3,300.

SPECIAL OPPORTUNITIES.—Bedstead, spring and mattresses, whitewear and iron-working factories, stove works, knitted goods, boot and shoe factories, woollen mill. Write the Pres. Bd. Trade.

HARRISTON (Wellington Co.), on Maitland River, on G.T.R., C.P.R. Hotels, Collison, Queen's and Royal. 4 churches, high and public schools, library, park. 2 banks. Town owns light and water systems. Niagara power available. Industries include stoves, planing mill, furniture, wood novelties, grist mill, casket co., cold storage plant, canning factory. Alt. 1,256. Pop. 1,500.

SPECIAL OPPORTUNITIES.—Town offers exemption from taxes to bona-fide manufacturers. Write Mgr. Royal Bank.

HAWKESBURY (Prescott Co.), on Ottawa River, half-way between Montreal and Ottawa, on Can. Nat. Ry., and G.T.R. Hotels, King Edward and 1 other. 3 churches, public, separate and high schools, R.C. academy. Electric light and power plant. Town owns water and sewerage systems. 2 banks. Industries include lumber mill, pulp and paper mills (largest sulphite paper mill in Brit. Empire), sashes and doors. Neighborhood supplies lumber and stone. Alt. 141. Pop. 4,057.

SPECIAL OPPORTUNITIES.—Marble works, foundry, pianos, boot and shoe, carpet and furniture factory. Water power awaiting development. To new industries town offers exemption from taxes, free sites and other inducements. Labor conditions good. Write Sec. Bd. Trade.

HESPELER (Waterloo Co.), on River Speed, 9 miles s. of Guelph, 6 miles n.e. of Galt, 3 miles n. of Preston. On G.T.R., connection with C.P.R. at Galt by Galt, Preston and Hespeler Elec. Ry. Hotels, Queen's, Commercial. 8 churches, public schools, 4 parks. Niagara elec. power 400 h.p. available. Rates according to amount used. Water system, Municipal buildings, 2 banks. Industries, blacksmiths' tools, woodworking machinery, furniture (2), stoves and furnaces, woollen mill machinery, textiles, sashes and doors, enamelled iron, lightning rods. Good farming district. Alt. 943. Pop. 3,000.

SPECIAL OPPORTUNITIES.—Foundries, furniture factories, free sites, tax exemptions and loans to new industries. Good labor conditions. Write Sec. Bd. Trade.

HUNTSVILLE (Muskoka Dist.), 145 miles n. of Toronto, on G.T.R. Local steamboat service. Hotels, Kent, Dominion, Vernon and C.T.R. summer hotel, "Wa-Wa." 6 churches, public and continuation schools, bank. Town owns light and water systems. Industries, tannery, planing mill, leather co., machine shop, 3 lumber mills. Timber, tan bark and minerals in neighborhood. A beautiful summer tourist country. Alt. 957. Pop. *2,358.

SPECIAL OPPORTUNITIES.—All wood-working industries, summer cottages and hotels. Liberal inducements offered. Write Sec. Bd. Trade.

INGERSOLL (Oxford Co.), on Thames River, 20 miles e. of London, on G.T.R., C.P.R., T.L.E., and P. Electric Ry. to Woodstock. Hotels, Ingersoll Inn, Atlantic and 3 others. Industries, 35 factories, including tools, furniture, hay forks, pianos, nuts, machine screws, cheese, pork packing, mowers, hearses, reapers, 2 builders' factories, woollen mill, 2 grist mills, fruit machinery, condensed milk, agricultural implements, flour mill, saw mill, planing mill, knitted underwear, fertilizer plant. Natural gas and Niagara elec. power. Alt. 879. Pop. 5,500.

SPECIAL OPPORTUNITIES.—Manufacturers using agricultural products and wood. Factory sites on 2 railways. Inducements offered on application. Write Pres. Bd. Trade.

KEMPTVILLE (Grenville Co.), on s. branch Rideau River, on C.P.R., S.S. connection with Ottawa River ports. Hotels, McPherson, Kerr. 5 churches, public and high schools, library, park, 2 banks. Industries include planing mills, electric power plant concrete pipe works, foundry. A farming district. The Ontario Government has a Demonstration Farm and Agricultural School here. Alt. 297. Pop. 1,250.

SPECIAL OPPORTUNITIES.—Knitting mill, brick making. Elec. power at \$20 per h.p. Write the Reeve.

KINCARDINE (Bruce Co.), on e. shore of Lake Huron, directly opposite Alpena, Mich. (97 miles), 100 miles n. of London, 160 miles w. of Toronto. On G.T.R. Steamship connections with Cleveland and Sault Ste. Marie. Hotels, Royal, Queen's, and 2 others. 4 churches, high and public schools, Carnegie library, city hall, 2 parks. Town owns elec. light and water systems. Elec. power at 10c. per k.w. hour. 2 banks. Industries include bridge and boiler works, pork packing, sashes and doors (2), salt, chairs, furniture, knitting mill. Neighborhood supplies sand, clay, marl, lime-

DESCRIPTIONS OF TOWNS

stone, and salt. Rich mixed farming and fruit-growing district. Popular summer resort, with bathing, boating and fishing. Good summer cottages to rent. Alt. 587. Pop. 2,500.

SPECIAL OPPORTUNITIES.—Iron industry, table factory. Steady supply of male and female labor. Town offers free sites and water, tax exemption and loan to new industries. Write Sec. Bd. Trade.

KINGSTON (Frontenac Co.) at mouth of Cataraqui River, where St. Lawrence leaves Lake Ontario. Outlet of Rideau Canal. On G.T.R., C.P.R., Can. Nat. Ry. On line of all river and lake S.S. Cos. Local elec. ry. Hotels, Frontenac, British American, Randolph. Seat of Queen's University and Royal Military College, 3 military hospitals, Anglican Cathedral. Numerous churches, good schools, 4 parks, 8 banks. City owns light, power, water and sewerage systems. Hydro-elec. power available. Industries include smelter, locomotives, textiles, hosiery, tiles (2), paper boxes, mouldings, pianos, boats, planing mill, brewery, broom factories (2), 4 elevators. Large feldspar mines nearby. Alt. 261. Pop. 22,000.

NOTE.—The Belvidere in residential part of city, (5 min. from boat and trains) was opened Nov., 1916. Private bath to every room. Exclusive arrangements.

SPECIAL OPPORTUNITIES.—Manufacturing clay and feldspar products. Free sites and tax exemptions to new industries. Cheap coal. Write Chairman Industrial Committee.

KINGSVILLE (Essex Co.), on Lake Erie, on Pere Marquette Ry. Elec. Ry. to Windsor, 28 miles. S.S. to Pelee Island. Hotels, Kings, Grovedale (summer), Mettewas Inn (summer). 3 churches, schoc^l, library, 2 parks, 2 banks. Town owns waterworks. Elec. light and power by private co. Nat. gas. Industries, woollen mill, cabinet shop, builders' factory, flour mill, 3 tobacco factories, cigars, stoves, metal weather strips. Govt. fish hatchery. Alt. 608. Pop. 2,000.

SPECIAL OPPORTUNITIES.—Natural gas for manufacturers, free sites, loans and tax exemptions. Write Sec. Bd. Trade.

KITCHENER (Waterloo Co.) on G.T.R. 60 miles w. of Toronto, 35 miles from Hamilton. Elec. Ry. (freight and passenger) connects with C.P.R. at Galt (12 miles). Hotels, Walper, American, Bowman and 4 others. 17 churches, 5 public schools, collegiate institute, R.C. college, Y.W.C.A., library, hospital, court house, golf and country club, large park and ball grounds, 9 banks.

City Towns and operates street ry., water, sewerage, elec. light and gas. Industries, over 135 factories, with annual output of \$10 000,000, including furniture, rubber goods, shirts, collars and whitewear, boots and shoes, wood working machinery, felt goods, buttons, trunks, furnaces, clocks, gasoline engines, baby carriages, bicycles, leather tanneries, 6 wholesale houses. An excellent agricultural district. Alt. 1,100. Pop. 19,266.

SPECIAL OPPORTUNITIES.—All industries employing male labour. Steady demand for all kinds of skilled mechanics. No labor troubles. Inducements offered new industries—free sites, exemptions, fixed assessments, etc., Niagara hydro-electric power, etc. Write Sec. Bd. Trade.

LAKEFIELD (Peterboro Co.), on the Otonabee River and Trent Valley Canal, 10 miles from Peterborough; on G.T.R. Terminus of Stoney Lake Nav. Co. Hotels, Lakefield, Commercial. 5 churches, public and continuation school, Lakefield Boys' School, 50 students. Town hall, park, elec. light co., bank, library, newspaper. Industries, Portland cement, 2 canoe factories, planing mill, saw mill, cheese factory, butter factory, elevator. Alt. 770. Pop. 1,033.

SPECIAL OPPORTUNITIES.—Woodworking factories, industries using Portland cement, flour and feed and general supply mills. 1,400 h.p. water power available. Write Pres. Bd. Trade.

LEAMINGTON (Essex Co.), on Lake Erie, on M.C.R. Pere Marquette Ry., and on W.E. & L.S.R. Ry. (elec.) to Windsor, 35 miles. Steamer to Pelee Island. Hotels, Auto-Stop, Ryall, Deming. 5 churches, public and high schools, Carnegie library, 4 banks. Natural gas for domestic use. Elec. light and power. Town owns water system. Industries, grist mill, tobacco (3), baskets, veneer and handles, foundry, fruit canning, catsup, cigars, sashes and doors, Heinz pickle factory, and largest early vegetable hothouse in Ontario. Neighborhood supplies tobacco*, early fruit and vegetables. Alt. 626. Pop. 3,604.

SPECIAL OPPORTUNITIES.—Manufactures using agricultural produce. Town offers tax exemptions and free water. Write Town Clerk.

LINDSAY (Victoria Co.), on Scugog River, 69 miles n.e. of Toronto, on C.P.R., G.T.R. S.S. connection with Trent Valley Canal. Hotels, Benson, Simpson, Elsmure. 5 churches, 4 public schools, 1 separate, col-

*See tobacco under agriculture, page 13.

legiate institute, convent, business college, armouries. Hydro-elec. power available from 2 sources. 5 banks loan and savings co., flour mill, woollen mill, 2 lumber mills, Govt. arsenal, machinery manufacturer, hydraulic machinery, chemical works, milk foods. One wholesale store. Good scenery, fishing and hunting. Alt. 854. Pop. 8,000.

SPECIAL OPPORTUNITIES.—For new industries tax exemptions and free sites, cheap power, freedom from labor troubles. Write Sec. Industrial Commission.

LISTOWEL (Perth Co.), on G.T.R., C.P.R. Hotels, Arlington, Grand Central, Queen's and 2 others. 7 churches, 2 schools. Town owns waterworks and elec. light. 2 chartered banks, 1 private. Industries, 2 builders' factories, chairs, pianos, furniture, vinegar factory, flour and oatmeal mill, creamery, knitting mill, cigar factory, phonographs, spinning plant, welding plant, cement tiles, large dye works. Govt. Hydro-elec. power. Alt. 1,262. Pop. *2,289. Write Sec. Bd. Trade.

LONDON (Middlesex Co.), on River Thames, on C.P.R., G.T.R., and on London and Port Stanley Ry. (owned and operated by city), connecting with P.M.R., M.C.R., Wabash Ry. and Lake Steamers at Port Stanley (23 miles), London's harbor on Lake Erie. Electric ry. to St. Thomas (18 miles) and Port Stanley (23 miles) connect with steamers to Buffalo, Cleveland, Detroit, etc. Hotels, Tecumseh, Grigg House, Belvidere and others. Seat of Western University (arts, medicine, divinity). Seat of Anglican and Roman Catholic bishops. Govt. hydro-elec. power and light. Industries over 250 factories, including iron, wood, leather, brass, cigars, cigar boxes, furniture, engines, agricultural implements, tinware, biscuits and candies, stoves, boilers, paper boxes, chemicals, breweries, boots and shoes, clothing, hosiery, gloves. Alt. 809. Pop. about 60,000.

NOTE.—New schools under construction. New city hall, new post office, new customs building, and extensive improvements to London's harbor on Lake Erie form part of London's building programme.

SPECIAL OPPORTUNITIES.—Manufacturers of all kinds, especially iron and steel, boot and shoes, and textiles, garments etc. Niagara power. Living is cheap. Loans and partial exemption from taxes and special plan to reduce initial cost of establishment of desirable branch industries offered. Write Industrial Commissioner.

§See illustrated advertisement on pages 48 and 49.

L'ORIGINAL (Prescott Co.), county town, on C.N.R., half-way between Montreal and Ottawa, 50 miles; Caledonia Springs 6 miles. Ottawa River boats. Hotels, Ontario, Grand Central. 4 churches, school, convent. Saw mills. Electric light. Lumber of all kinds obtainable. Pop. 1,500.

SPECIAL OPPORTUNITIES.—Any kind of woodworking. Inducements on application. Write the Reeve.

LUCKNOW (Bruce Co.), on G.T.R., 133 N.W. of Toronto, Daily stage from Goderich. Hotel, Cain. 4 churches, public and high school, library, parks. Elec. light co., 2 banks, apple evaporator, woollen mills, 3 saw mills, furniture, artificial limbs, flour mill. Alt. 908. Pop. 1,200. Write Town Clerk or Mgr. Molson's Bank.

MATTAWA (Nipissing Dist.), at east end of Lake Temiskaming, at junction of Mattawa and Ottawa Rivers, 45 miles e. of North Bay, on C.P.R. main line and Kippawa br. Hotels, Victoria, Mattawa. 4 churches (Ang., Pres., Meth., R.C.), public and separate schools, court house, gaol, town and fire halls, electric light, bank, saw mill. Large deposits of mica nearby. Good fishing and hunting. Alt. 564. Pop. 1,523.

SPECIAL OPPORTUNITIES.—Lumbering, several good water powers awaiting development. Write the Mayor.

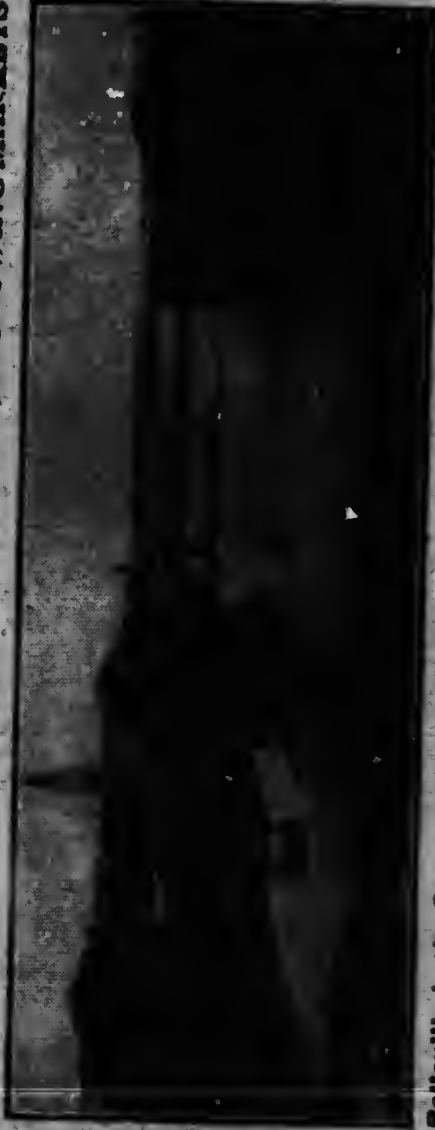
MEAFORD (Grey Co.), port on Georgian Bay, on G.T.R. Between Owen Sound and Collingwood (20 miles each). Fine harbor, 20 ft. of water. 2 boats weekly to West. Hotels, Paul's, Queen's. 5 churches, high and public schools, town hall, fire hall, armoury. Electric power. Two banks. Industries include bricks, hardwood floors, mantel, foundry and machine shop, flour mill, boxes, canning factory, furniture, wheelbarrows, blankets and yarns, flooring, 3 fruit evaporators, 2 builders' factories, tannery, 2 coopers' shops, 2 garages. Apple-growing district. Alt. 672. Pop. 3,300.

SPECIAL OPPORTUNITIES.—Chair, iron bed and woodworking factories, boat builder, elevator. Town offers free water, tax exemptions and possibly free loan. Write Pres. Bd. Trade.

MERRITTON (Lincoln Co.), on G.T.R., Can. Nat. Ry., and Welland Canal. Electric line from St. Catharines. Hotels, Mansion House, Union, Railway. Town owns elec. light and power plant, and gravity fire protection systems. Industries, bentwood, rubber, Presto-lite, 3 paper mills, carbide factory, foundry and wire rope works, planing mill. Alt. 389. Pop. 2,200.

BELLEVILLE

A NATURAL MANUFACTURING
CENTRE FOR GROWING MARKETS



Belleville is the Commercial and Educational Centre of Two Prosperous Counties
Famous for Dairying and the Cultivation and Canning of Fruits and Vegetables

Advantages We Offer

Unrivalled shipping facilities by rail and water.
Raw materials nearby for wood, feldspar, talc,
cement, canning and dairy industries.
Hydro-Electric power and water at cost.
Liberal inducements to new industries.

See description of Belleville on page 46, then write for full information to

CHAIRMAN OF INDUSTRIES

BELLEVILLE, ONTARIO

SPECIAL OPPORTUNITIES.—To new industries town offers inducements, abundant water power and good railway facilities. Write Municipal Clerk.

MIDLAND (Simcoe Co.), on the Georgian Bay, 120 miles from Toronto, G.T.R. Northern Nav. Co. to Parry Sound. Hotels, Gladstone, Queen's, Hewis, American, 5 churches, 1 high, 4 public schools, 3 banks, 3 garages, 3 elevators, 3 lumber mills, 3 planing mills, 2 sash and door factories, foundry and machine shop, box shoo factory, woollen mill, 1 blast furnace, 1 flour mill, whitewear factory, 2 engine works, 3 elevators, 2 coal docks, 2 ship-building yards, 2 shell works. Government wireless station. Hydro-elec. power from Severn River. Alt. 593. Pop. 6,258.

SPECIAL OPPORTUNITIES.—Stove factory, electrical works, dry dock, building mechanics' houses. Write Town Clerk.

MILTON (Halton Co.), on C.P.R., G.T.R., 32 miles w. of Toronto. Hotels, McGibbon, New Royal, Commercial. 3 churches, 1 school, county buildings, water-works, 2 parks. Niagara hydro-elec. power and light. 3 banks. Industries, carpets, saw mill, creamery, wire nails, flour mill, 4 pressed brick works, planing mill, boots and shoes, crushed stone and lime, wood screws and rivets, nickel and silver plating, electric motors, foundry. Alt. 660. Pop. *1,825.

SPECIAL OPPORTUNITIES.—Basket factory. For manufacturers there are good shipping facilities. Factory sites adjacent to competitive railway lines, with tax exemption and free water. Write Sec. Rd. Trade.

MITCHELL (Perth Co.), on Thames River, on G.T.R., 12 miles w. of Stratford. Hotels, Hicks, Royal. 4 churches, public and high schools, 2 banks. Town owns light and water systems. Niagara hydro-elec. power. Industries, knitting mill, flax mill, foundry, bricks and tiles, woollen mill, flour mill, planing mill, bridge works, evaporator, cold storage. Alt. 1,211. Pop. 1,775. Write the Mayor.

MORRISBURG (Dundas Co.), on St. Lawrence River, 90 miles w. of Montreal, on G.T.R. Connection with Can. S.S. Lines at Prescott. Ferry to Waddington, N.Y. Hotels, St. Lawrence, \$2; Southern, \$1.50; Windsor. 5 churches, 2 banks. Town owns electric light and water system. 1,100 h.p. water power available. Industries, stove works, tack factory, cheese box factory, poultry fattening plant, cold storage. Good scenery, fishing and boating. Pop. 1,800.

SPECIAL OPPORTUNITIES.—Cheap elec. power, water light and low taxes offered to new industries.

MOUNT FOREST (Wellington Co.), on C.P.R., G.T.R. Hotels, Central, Coyne, and 2 others. 5 churches, high, pub. and sep. schools, 2 bank. Govt. hydro-elec. power. Industries include foundry, caskets, carriages, grist mill, woollen mill, creamery, brick yard. Alt. 1,348. Pop. 1,837.

SPECIAL OPPORTUNITIES.—Furniture or woodenware factory, knitting factory, organ and piano case factory. Write Bd. Trade.

NAPANEE (Lennox and Addington Co.), on Napanee River, navigable to Bay of Quinte; 135 miles e. of Toronto, on G.T.R. and Can. Nat. Ry., connecting with C.P.R. at Tweed. Hotels, Campbell, Paisley and 2 others. 5 churches, public school, collegiate institute, armoury, county municipal bldgs., park, race track: Govt. hydro-elec. light, gas, water and sewerage systems. 3 banks. Industries include flour mills (2), foundry and machine shop, cannery, bricks and tiles (2), saw mill, furniture, planing mills and motor boat works, carriages, creamery. Water power available. Neighborhood supplies brick clay and cement clays. Centre of good farming district. Hydro-elec. power. Alt. 313. Pop. about 4,000.

SPECIAL OPPORTUNITIES. — Furniture, cannery. Power at \$12 per h.p. up. Free sites and fixed assessments offered. Write Town Clerk.

NEW HAMBURG (Waterloo Co.), on River Nith, 73 miles w. of Toronto, 14 miles from Kitchener and Stratford, on G.T.R. Hotels, Commercial, Imperial and 2 others. 7 churches, public and high schools. Niagara hydro-elect. light and power. 2 banks. Industries include silverware, felt boots, brass work, electric meters, furniture, bricks, flour mill, foundry, farm implements, trucks and bags. Pop. 1,800.

NEW LISKEARD, at head of Lake Temiskaming, on T. & N.O. Ry. Steamers to Temiskaming, connecting by short line with C.P.R. at Mattawa. Electric Ry. to Ealeybury, 5 miles; Cobalt, 10 miles. Hotels, Grand Union, Canada, Windsor. 5 churches, separate, public and high schools, fire hall, public library, theatre, hospital. Municipal electric light and waterworks, 2 banks. Industries, 5 saw mills, bricks, foundry, grist mill. Cheap electric power. Neighborhood supplies pulpwood and clay. A good and largely settled agricultural district. Pop. 4,000.

SPECIAL OPPORTUNITIES.—Furniture factory, brick yards, pulp mill, wooden-ware, confectionery and biscuit factories, creamery. Write T. & N. O. Ry. Agent.

NEWMARKET (York Co.), on Holland River, on G.T.R. and Toronto & York Radial Ry., 27 miles n. of Toronto. Can. Ex. Dom. Ex. Tel. G.N.W. Hotel, King George, \$2.50. 7 churches, Pickering College, public, separate and high schools, 3 banks, market, waterworks, fire hall, municipal offices, fair grounds. Elec. light and water systems owned by town. Industries include office furniture, woodenware, pencils, tannery, cheese and butter. Pop. 4,000.

SPECIAL OPPORTUNITIES.—Boots and shoes. Write H. S. Canc.

NEW TORONTO—See under "Toronto."

NIAGARA FALLS (Welland Co.), on Can. Nat. Ry., C.P.R., G.T.R., Erie Ry., N.Y.C. and H.R.R., Lehigh Valley, Lake Shore, W. & O., Wabash, Pere Marquette, International Traction (electric). Hotels, Clifton, Savoy, Windsor, New Rosli, Lafayette, Hospice. Power is supplied by natural gas and Hydro-Elec. Commission at cost. 4 banks. Industries include cereal foods, carborundum, graphite, cyanamid, suspenders, neckwear, wire and steel chain, silverware, hats, hosiery, foot supports, carpet sweepers, automobile accessories; paper boxes, aluminum novelties, corsets, cannery, creamery, planing mill, 2 brick yards, 2 builders' factories, foundry and machine shop, electrochemical industries, sanitary cans. In neighborhood is found Queenston limestone, brick clay, building sand, and gravel. Alt. 573. Pop. 11,850. See Niagara District under "Agricultural Districts."

SPECIAL OPPORTUNITIES.—Iron and steel industries, textile and other manufacturing industries, contractors, builders, real estate, building houses and business blocks for sale or rental. Power rates—electric, \$11.50 per h.p. Natural gas, 40c. per M. ft. Town offers manufacturers fixed assessment or exemption from taxation for a term of years, dependent on nature of applicants' industry. Write Sec. Bd. Trade.

NORWICH (Oxford Co.), on Otter Creek and G.T.R., 16 miles s.e. of Woodstock. Hotel, Dake House. 6 churches, public and high schools, 2 banks. Industries include brooms, cider and vinegar works, saw and planing mills, condenser, evaporator, flour mill. Alt. 846. Pop. 1,200.

DESCRIPTIONS OF TOWNS

SPECIAL OPPORTUNITIES.—Good factory sites available, with railway sidings. Govt. Hydro-elec. power. Free sites and fixed rate of taxation offered manufacturers. Write Sec. B. Trade.

OAKVILLE (Halton Co.), on Lake Ontario, 21 miles w. of Toronto, on G.T.R. Electric Ry. to Hamilton, 21 miles. Fair harbor. Hotels, Village Inn, Gibson, Oakville, Murray. 5 churches, public, separate and high schools, Appleby School, a first-class boys' school, J. H. Guest, Proprietor, is 1 mile out of town. Municipality owns waterworks and electric light. 3 banks. Industries include 2 planing mills, tanning, baskets, boat building, evaporator, aluminum ware, tire and rubber. Alt. 329. Pop. 2,972, in summer 3,500.

NOTE.—Government cement road from Toronto to Hamilton runs through Oakville.

ORANGEVILLE (Dufferin Co.), county seat. On C.P.R., 49 miles from Toronto. Hotels, Queen's, Grand Central and 2 others. 5 churches, public and high schools. Electric light and waterworks. Govt. hydro-elec. power. 3 banks. Industries include foundry and machine shop, woollen mills, cement, builder's factory, chop mill, flour mill. Alt. 1,395. Pop. 2,468.

SPECIAL OPPORTUNITIES.—Boot and shoe factory, carriage factory, stove works, knitting mill. Write Sec. Bd. Trade.

ORILLIA (Simcoe Co.), on Lake Couchiching, 86 miles n. of Toronto, on G.T.R., C.P.R. and Can. Nat. Ry. On route of projected Trent Valley Canal. Hotels, Orillia, Daly, Gladstone, and summer hotel. 7 churches, 5 schools, collegiate institute. Municipal buildings—opera house, Y.M.C.A. Provincial Asylum for Feeble-minded, Carnegie library. 2 parks. Town owns light, water and sewerage systems and water filtration plants. Elec. power; 5,000 h.p. available; rate, \$13.50 per h.p. for 10-hour service, \$18 for 24-hour service. 4 banks. Industries include clothing (2), electro-smelting, wood specialties, woollen factory, electric foundry, saw mill machinery, knitting factory, planing mills (2), boats and canoes (2), hoops, shoes, hardware, furniture, pumps, farm implements, automobiles, carriages, wagons, cement, bricks, 4 wholesale houses. A farming and fruit-growing country. Abundant timber. Popular summer resort. Good bathing and fishing. Golf links. Alt. 732. Pop. 8,000.

SPECIAL OPPORTUNITIES.—Auto tire and rubber factory, white wear, automobiles, furniture and shoe factory. To bona fide industries town offers fixed assessments

and free sites, cheap power, good labor conditions. Write Sec. Bd. Trade.

OSHAWA (Ontario Co.), 2 miles from Lake Ontario, 31 miles e. of Toronto, on C.P.R., Can. Nat. Ry., G.T.R. Toronto and Eastern Elec. Ry. (proposed). Local elec. ry. connects all factories with steam railways. Hotels, Commercial, Queen's, Oshawa, Central. 7 churches, high school, 5 public schools, Y.M.C.A., Carnegie library, armory, hospital, 2 parks. Elec. light and power from Trent River. Town owns water and sewerage systems. Gas plant. 4 banks. Industries: foundry, steam and gas fittings, carriages, automobiles, malleable iron, canning, textiles, metal work, leather, woollens, pianos, rubber goods, builders and contractors, 1 wholesale grocery. A good agricultural district. Golf course. Alt. 331. Pop. 8,240.

SPECIAL OPPORTUNITIES.—Manufactures of all kinds. Good shipping facilities and labor conditions. Abundant electric power. Free sites and other liberal inducements offered. Write Sec. Publicity Committee.

OTTAWA, Capital of the Dominion of Canada, on the Ottawa River, Can. Nat. Ry., C.P.R., G.T.R. Ottawa and N.Y. (N.Y.C.). Suburban Electric Ry. to Hull, Aylmer, Britannia. Steamers to St. Lawrence River and the Great Lakes, through Rideau Canal. Hotels, Chateau Laurier \$3.00 up (Eur. plan), New Russell \$2.00 to \$3.50 (Eur. plan), Alexandra \$2.50, Carlton, Windsor \$2.00 to \$2.50. Official seat of Governor-General, seat of Federal Government. National Victoria Museum, Parliamentary Library, National Art Gallery, Royal Observatory, Royal Mint, Central Canadian Experimental Farm, 400 acres. Govt. Fisheries Exhibit, Govt. Archives, Agricultural and Industrial Exhibition and Fat Stock Show of Central Canada. Anglican and Roman Catholic cathedrals, Ottawa University (500 students), Ashbury College for boys, Ottawa Ladies' College, La Salle Academy for boys, Provincial Normal School, collegiate and an excellent public school system. 30 miles of driveway, well laid out, and 2,000 acres beautiful park lands. Many attractive resorts in the district, with all kinds of winter and summer sports. Industries, about 140 factories, including wood products, paper mills, match factories, foundries, cement, carbide, marine gas buoys (only factory in the world), iron works and foundries, mica, clothing, etc., etc. Capital invested, over \$50,000,000, about 17,000 hands employed. Alt. 247. Pop. including suburbs, 100,500 approx.

NOTE.—Parliament buildings destroyed by fire Feb. 3, 1916, is being reconstructed with additional storey. Estimated total cost \$5,000,000.

DESCRIPTIONS OF TOWNS

SPECIAL OPPORTUNITIES.—Automobiles, boxes, hags, biscuits, barrels, bottles, clothing, cigars, confectionery, cereals, elevator and mill building machinery furniture, flour, gloves, paper and kindred products, pottery, roller mill products, rubber and felt goods, shirts, shoes, steel castings, tiles, textiles, woodenware, etc. Water power available within a radius of 56 miles is estimated at 2,000,000 h.p., of which about 75,000 h.p. is at present utilized. Inducements on application. Write Sec. Bd. Trade.

TOWEN SOUND (Grey Co.) port on Georgian Bay, at mouth of Sydenham River. 122 miles n.w. of Toronto, on C.P.R. and G.T.R. S.S. lines to lake ports, Northern Navigation Co., C.P.R., Dominion Transportation Co., Owen Sound and Georgian Bay Co., Chicago, Duluth and Georgian Bay Transit Co. Fine, well-protected harbor. Sound is 12 miles long navigable for largest vessels. Hotels, Seldon, Patterson and Queen's. Summer resort on the beach near town. Churches of all denominations. High and public schools. 2 theatres, public library, 5 banks. Industries, chairs, bolts and screws, tables, 2 tanneries, woodenware, baskets, 3 mill machinery, turbine water wheels, wire fences wire nails, 3 agricultural implements, 2 bricks, 2 lime, stoves, 2 furniture, 5 saw mills, confectionery and biscuits, vinegar and pickles, 2 cold storage plants, 5 foundries (3 iron, 1 steel, 1 malleable iron), 2 sash and door factories, 2 flour mills, oatmeal mill, linseed oil mill, woollen mill. Alt 585. Pop. 12 612.

NOTE.—Govt. hydro-elec. power from Eugenia Falls.

SPECIAL OPPORTUNITIES.—Agricultural implements, organ and piano, carriage and furniture factories, ship-building, iron and woodworking industries of all kinds. Liberal inducements offered. Write Chairman Industrial Committee

PALMERSTON (Wellington Co.), 78 miles from Toronto a divisional point on G.T.R. Hotels, Queen's, Imperial, Hess. 5 churches, 1 school, Carnegie library, 2 banks. Govt. hydro elec. power. Industries include builders' factory, grist mill, woodenware. Alt. 1,313. Pop. 2,000. Write the Mayor.

PARIS (Brant Co.) on Grand River, on G.T.R., L. Erie & Northern Ry., and Grand Valley Elec. Ry. from Brantford, 7 miles, to Galt, 14 miles. Hotels, Arlington, New Royal. 7 churches, high and 3 public schools, library, 3 banks. Town owns light, water and sewerage systems. Hydro-elec. power. Nat. gas at 50c., with 10% discount. Industries include alabastine works, flour mill, woollen cloth mill, 2 knitting factories, refriger-

erators, screen doors and window screens, International Harvester Co., needles. Neighborhood supplies gypsum and brick clay. Tennis, golf, etc. Alt. 843. Pop. 4,300.

PEMBROKE (Renfrew Co.), on Ottawa River, on Can. Nat. Ry. main line, on C.P.R. main line, G.T.R. Ottawa Div. Hourly ferry to Alouette Island, steamer to Des Jochims 50 miles. Hotels, Copeland, Pembroke, Leland and 5 others. 7 churches, 6 schools, convent school, 2 hospitals. Chief place in Upper Ottawa Valley. Good water supply. Electric power supplied by Pembroke Power Co. 2 banks. Industries include 3 lumber mills, 2 builders' factories, 4 machine shops, 3 foundries, lumbering tools, woollen mill, steel furniture, electric specialties, large shock mill, 2 flour mills, bricks, mocassins, gloves, leather tannery. The Dominion Military Camp is situated at Petawawa, 10 miles. Algonquin National Park is 12 miles off. Good hunting and trout fishing. Alt. 381. Pop. 8,500.

SPECIAL OPPORTUNITIES.—Manufacturers requiring girl labor. Write the Mayor.

PENETANGUISHENE (Simcoe Co.), on inlet of Georgian Bay, on G.T.R. Hotels, Georgian Bay, Canada and 2 others. A summer resort. 6 churches, public separate, high schools, Carnegie library, hospital for insane, 2 parks, water system. Elec. power from Severn River. 2 banks. Industries include 1 tannery, 5 saw mills, gasoline engines, 2 box works, carriages, foundry, stoves, launches factory, fibre boards, shoe packs, 3 planing mills, palls, tubs, 2 machine shops, flour mills, 2 brick yards. Good harbor and docks. Gateway to 30,000 islands of Georgian Bay. Bathing, boating, fishing and hunting. Alt. 589. Pop. 3,963.

SPECIAL OPPORTUNITIES.—Knitting mills, furniture, pulp mills, boots, iron and steel works, elevators ship yards. Town offers free sites, tax exemption, cheap power, shipment by rail and water. Write Sec. Bd. Trade.

PERTH (Lanark Co.), on Tay River, 40 miles from Ottawa, on C.P.R. Hotels, Revere, Hicks, and others. 6 churches, public and separate schools, collegiate institute, library, athletic park, light and waterworks. 3 banks. Industries include 2 foundries, sashes and doors, medicines, aerated waters, felt factory, carpets, knitting mills, boots and shoes. Rideau Ferry Summer Resort, 8 miles reached by stage and boat. Good farming district. 9-hole golf course. Alt. 433. Pop. 4,000. Write Sec. Bd. Trade.

PETERBOROUGH (Peterborough Co.), 75 miles n. e. of Toronto, on Otonabee River, on C.P.R., G.T.R. and branches. Trent Waterway. Hotels, Oriental, National and others. Govt. hydro-elec. power. (30,000 h.p. developed). Seat of R.C. cathedral. 17 churches, 9 schools, normal training schools for teachers, collegiate institute, public library, 4 parks, 8 banks. City owns elec. light and power plant, water and sewerage systems. Industries, over 70 factories, including harness, cereal foods, electric machinery and supplies, mining and mill machinery, lumber mills, canoe factories, pork packing, locks, flour mills, show cases, agricultural implements, clothing, carpets, tents and sails, dairy machinery, yarn, steel sashes, marble products, bricks and tiles, butter, aerated waters, furniture, silk labels, condensed and evaporated milk, textiles, gum, confectionery. (For details of lift lock here, the largest in the world, see Heaton's Annual). Headquarters for Canadian General Electric and Quaker Oats Co. for Canada. The neighborhood supplies iron, gold, silver, lead, mica and various kinds of lumber. Centre of a rich mixed farming and dairying district. Alt. 949. Pop. 24,000.

SPECIAL OPPORTUNITIES.—Metal, wood pulpwood and woollen products, ship and barge building. Trent Valley Canal affords 8-ft. waterway to Great Lakes. Cheap power and water. Write City Clerk.

PETROLIA (Lambton Co.), on G.T.R., Mich. Central Ry., with inter-switching facilities. Hotels, Iroquois, Tecumseh, Normandy and others. 4 churches, and Salvation Army, high and public schools, business college, hospital, 2 parks, banks (2 chartered, 1 private). Town owns water and sewerage systems. Govt. hydro-elec. light. Nat. gas by private co. Industries include 2 oil refineries, oil well supplies, 2 elevators, fruit and vegetable cannery, 2 boiler works and machine shops, wagons, flax mill, bridge co., fire extinguishers, large brick and tile works, large butter factory. Centre of oil district. A fine farming country. Alt. 667. Pop. 4,500.

SPECIAL OPPORTUNITIES.—Oil investments, oil prospecting, any kind of industry. Town offers free sites and exemptions from taxes. Write Sec. Bd. Trade.

PICTON (Prince Edward Co.), on Bay of Quinte, 103 miles e. of Toronto. On Can. Nat. Ry. Hotels, Royal, Globe, Queen's, Quinte. Daily steamers to Bay of Quinte ports, weekly to Toronto and Montreal. Public library, 2 parks, 7 churches, public and separate schools, collegiate institute, opera house, 4 banks. Centre of canning industry. Other industries include foundry

box factory, 2-barrel factories, butter factory, saw and planing mill, boat building and bricks. Golf links. Alt. 322. Pop. *3,788. Write Sec. Bd. Trade.

PORT ARTHUR (Thunder Bay Dist.), on w. shore of Lake Superior, 1,700 miles from Atlantic, 1,900 miles from Pacific; head of lake navigation. Judicial centre of district. Customs port of entry. On Can. Nat. Ry., C.P.R., P.A.D. & W. Ry. Inter-city electric railway to Fort William (3 miles). All lines of steamers on upper lakes call. Terminals of Inter-lake S.S. Line. Govt. wireless station. Hotels, Prince Arthur (Can. Nat. Ry.), Eur. plan; Mariaggi, Algoma and 13 others. Churches, all denominations; 7 divisional schools, 2 separate schools, collegiate institute, Y.M.C.A., armoury, sailors' institute, 4 theatres, public library. Streets all paved and well lighted. Municipally owned street ry., electric plant. Govt. hydro power, water-works and telephone, 7 banks. Industries include Dominion Govt., Can. Nat. Ry. and 9 private elevators; total capacity 28,000,000 bushels. Atikokan blast furnaces, large shipbuilding co., C.N. coal and ore docks, 5 large lumber cos., wagon works, 3 cold storage plants, tents and awnings, 2 aerated water, brewery, hardwood finishing factory, pulp mill, sand, lime, bricks. The centre of a rich mixed farming district, which is being opened up by the Government roads. Health resort for asthma, etc. Alt. 608. Pop. 14,000.

SPECIAL OPPORTUNITIES.—City offers free factory sites and 75% concession on taxation. Steam coal costs about \$2.50 per ton. Atikokan Blast Furnace supplies pig iron. 3,000,000,000 tons of iron ore in vicinity. Write to Chairman Industrial Committee.

PORT COLBORNE (Welland Co.), on Lake Erie, at mouth of Welland Canal, on G.T.R. and C.N.R. (electric). Hotels, Commercial, McNeal's. Niagara power and nat. gas. Good harbor, depth 22 ft., large docking facilities, 3 banks. Industries include \$5,000,000 nickel refinery of International Nickel Co., planing mill, brewery and malting house, large flour mills, Govt. elevator, cork works, cement works, grist mill, pig iron factory, grain and feed mill. Humberstone Summer Resort Club nearby. Alt. 580. Pop. 2,500.

SPECIAL OPPORTUNITIES.—Steel and iron industries. Write the Mayor.

PORT DALHOUSIE (Lincoln Co.), on s. side of Lake Ontario, at entrance to Welland Canal, 3½ miles from St. Catharines. On Can. Nat. Ry. and G.T.R., Elec. Ry. to St. Catharines, Niagara Falls and Buffalo, N.Y. S.S. service every 3 hours in summer to Toronto. Ho-

NAPANEE

THE CENTRE OF A RICH
AGRICULTURAL DISTRICT



A Public School in Napanee

NAPANEE is on the banks of the Napanee River, navigable to the Bay of Quinte; on Can. Nat. Ry. and G.T.R., connecting with C.P.R. at Tweed. NAPANEE is surrounded by rich farms and prosperous farmers; a good market ensures cheap foodstuffs and low cost of living. NAPANEE offers to manufacturers factory sites on competing railways, power and water at cost, excellent labour conditions, and liberal inducements.

Read the description of Napanee on pg. 72, then write for detailed information to

THE TOWN CLERK

NAPANEE, ONTARIO

tels, Austin, Wellington, Lincoln. 3 churches, public and separate schools. Govt. hydro-elec. power and light. 1 bank. Industries, rubber factory, 2 canneries, shipyard and dry dock, coal dock elevator, Government canal gate yard. Centre of Niagara peach belt. Pleasure resort, with beach park, bathing, boating on "Henley" course, tennis courts. Pop. 1,500; in summer 2,800.

PORT ELGIN (Bruce Co.), on Lake Huron, on G.T.R. Hotels, Queen's, Arlington, 2 banks. Industries, planing mill, bricks, grist mill, brush and broom factory, saw mill. A summer resort. Alt. 673. Pop. 1,235.

PORT HOPE (Durham Co.), on Lake Ontario, 60 miles e. of Toronto. On Can. Nat. Ry., G.T.R., C.P.R. Steamer bi-weekly to Toronto and Montreal; fine harbor. Hotel Queen's. Seat of Trinity College School for boys; 125 pupils; central and 2 primary schools, 6 churches, library, 2 parks, opera house. Town owns waterworks intake system and sewerage systems. Govt. hydro-elec. for street lighting and power. 3 banks, 1 loan co. Industries include preserving and canning, enamelware, lacquer and varnish, iron sewer pipe and connecting iron works, plumbers' supplies, tanneries, foundry, 2 file factories, flour mills, pottery and red brick plant, planing mill, machine shops, large greenhouses, carriage and implement factories, trousers, wooden and steel mats, copperine, babbitt metal and phenyle. Good fruit-growing district. Alt. 265. Pop. *5,089.

SPECIAL OPPORTUNITIES.—Manufacture of brass goods, automobiles, malleable iron. Abundant elec. power at \$12 to \$25 per h.p. Erection of mechanics' houses. Town offers free sites with interswitchings between C.P.R. and G.T.R., and tax exemptions. Write Sec. Bd. Trade.

PRESCOTT (Grenville Co.), on St. Lawrence River and C.P.R. and G.T.R.; 12 miles e. of Brockville. Hotels, Daniels, Alexander, Revere. Foot of lake navigation on St. Lawrence River, and port of call of all boats, car ferry to N.Y. Cen. Ry., summer and winter, at Ogdensburg. 4 churches, public, high and separate schools, opera house and public library, 2 banks. Industries include emery wheels, caskets, creamery, distillery, grain elevator (cap. 1,000,000 bushels), planing mill, candy factory, brass goods, fire extinguishers, cream separators, veneer paper, etc. Government marine works are situated here. Hydro-elec. power. Alt. 247. Pop. *2,801.

SPECIAL OPPORTUNITIES.—Manufacturers are offered low taxation, good shipping facilities and Niagara Elec. power, 150 acres of factory sites between C.P.R. and G.T.R., tax exemptions and loans. Write Commissioner of Industries.

PRESTON (Waterloo Co.), on G.T.R. and C.P.R. Visited for its mineral springs. Electric lines to Kitchener, Waterloo, Hespeler, Paris, Brantford, Port Dover. Hotels, Kress, and 3 others. 5 churches, good schools, 3 parks, library, 3 banks. Town owns elec. light and power, water and sewerage systems. Industries, wood-working machinery, office, school and household furniture, stoves and furnaces, electric and steam cars, hay machinery, planing mill, metal shingles, electric fittings, rolling mill, woollens, brushes, agricultural implements, hockey sticks, wagons and sleighs, woollen mill, piano players, shoes. 20 factories in all. Alt. 925. Pop. 5,200.

SPECIAL OPPORTUNITIES.—Manufacturers are offered low taxation, good shipping facilities and Govt. hydro-elec. power. 150 acres of factory sites between C.P.R. and G.T.R. Tax exemptions, loans offered to new industries. Write Commissioner of Industries.

RENFREW (Renfrew Co.), on Bonnechere River, 8 miles from confluence with Ottawa River. On G.T.R. and C.P.R. main lines. C.P.R. branches to Kingston and Eganville. Hotels, Renfrew, Dominion, Ottawa. 5 churches, public and separate schools, collegiate institute, drill hall, exhib. bldgs. Large creamery, hospital, library, opera, 2 picture shows, curling and skating rinks, 3 banks. Municipal power house, water and sewerage systems. 2 private elec. light plants. Industries, refrigerators, flour mills, hosiery, machinery, sashes and doors (2), truck scales, bricks and tiles, lime, woollen mill, blankets, foundry, electric supplies, cream separators, gas engines, large creamery. Alt. 416. Pop. 6,611.

SPECIAL OPPORTUNITIES.—Wool and factories, foundry, woodenware factory, knitting mills. 600 h.p. elec. power available at \$20 per h.p., 24-hour service. Abundant water power nearby. Town offers special inducements. Write Sec. Bd. Trade.

RIDGETOWN (Kent Co.), on M.C.R. and Pere Marquette Ry. Hotel Arlington. 8 churches, public school, collegiate institute, library, 2 banks. Industries include planing mill, basket factory, cannery, bean packing plant, machinery works. Govt. hydro-elec. power. Natural gas at 25c. per M feet, 12½c. to

manufacturers. Fishing and shooting at Rondeau 11 mi. Alt. 657. Pop. *1,905.

SPECIAL OPPORTUNITIES.—Woodworking industries, shoe factory, pickle factory. Inducements on application. Write Mgr. Royal Bank.

ROCKLAND (Russell Co.), on Ottawa River, 22 miles e. of Ottawa. On Can. Nat. Ry., G.T.R.. Steamboats on Ottawa River. Hotels, Rockland, Atlantic, and 2 others. 3 churches, public, high and 2 separate schools, 2 banks. Light and water by private co. Industries; lumber mills (2), mica, sashes and doors, machine shop, planing mill. Popular tourist resort. Pop. 3,277.

SPECIAL OPPORTUNITIES.—Industries using hard or soft woods, canning tomatoes and corn, brick, cement and lime industries. Town offers tax exemptions. Write Town Clerk.

ST. CATHARINES (Lincoln Co.), on Can. Nat. Ry., G.T.R. and Welland Canal. Steamers to Toronto. Elec. ry. to Niagara Falls, Welland; Port Colborne, Niagara-on-the-Lake, Dalhousie, Merritton and Thorold. Hotels, The Welland (combination hotel and sanitarium), Saline springs, \$2.50 up; New Murray, \$2, etc. 15 churches, 10 schools, collegiate institute, business college. Seat of Bishop Ridley College (Church of England), 150 boys. County bldgs., city hall, armouries, library. City owns gas, water and sewerage systems, and Niagara elec. light and power. Elec. light and power and nat. gas by private cos. 12 banks. Industries, about 80 in district, including 5 paper mills, flour mills, planing mills, hair cloth, wine, metal works, motors and other electrical machinery, biscuits, 4 canning factories, incandescent lamps, baskets, jaws, agricultural hand tools, knitting, brewery, mincemeat machines, jam, knives, tannery, rubber factories, flax and silk mills, greenhouse manufacturers. Canadian Henley Regatta held annually. Centre of Niagara fruit belt. The mineral springs here are a specific for rheumatism. Alt. 347. Pop. 17,641 (within 5 miles radius 30,000).

SPECIAL OPPORTUNITIES.—Building workmen's houses. Any manufacturing industry. Cheap power. Liberal inducements offered. Write Industrial Commissioner or Sec. Bd. Trade.

ST. MARY'S (Perth Co.), on Thames River, 100 miles w. of Toronto, on G.T.R. and C.P.R. Hotels, Windsor, Royal Edward, Ontario and others. 7 churches, 3 public schools, separate school, collegiate institute and public library, opera house, municipal buildings and

large parks, 3 banks. Town owns waterworks and elec. light. Niagara elec. power. 2 newspapers. 25 miles of granolithic walks. Industries include 2 builders, factories, agricultural implements, fruit evaporator, creamery vats, wood specialties, \$750,000 cement works, cement products, 2 planing mills, 2 limestone quarries, lime kiln, cold storage, hooks and eyes, flour mill, cheese factory, creamery, flax mill, creamery machinery, crushed stone for roads, flour mill, handle factory. Neighborhood supplies sand and stone, cement clay, limestone and lumber. The centre of a very rich general mixed farming, fruit-growing and dairying district. Good boating on Thames River, boat house, boating association and grounds. Beautiful scenery. Alt. 1,082. Pop. 4,000.

SPECIAL OPPORTUNITIES.—Town offers cheap power, good shipping facilities, large area for factories, cheap living, good labor conditions, low fixed assessments. Write Sec. Industrial Commission.

SPECIAL OPPORTUNITIES.—Town offers cheap power, good shipping facilities, large area for factories, cheap living, good labor conditions, low fixed assessments. Write Sec. Industrial Commission.

ST. THOMAS (Elgin Co.), on C.P.R., G.T.R., P.M.R., M.C.R., Wabash Ry.; 87 passenger trains daily. 2 Elec. rys. to Pt. Stanley, 8 miles; London, 18 miles. S.S. connection by Pt. Stanley with Cleveland, Detroit, etc.; and Upper Lakes. Hotels, Grand Central, Talbot \$2.50, Columbia, Dake \$2.00 and 2 others. 10 churches, collegiate, 1 high and 5 public schools, 2 daily papers, public park (150 acres), 1 country, 2 social clubs, county buildings, hospital, Old People's Home, 9 banks. Industries include brushes and brooms, shoes (3), confectionery, knitting, handles (2), woodenware (3), 1 steel, 1 brass and 3 iron foundries, 3 large railway shops, planing mills, (3), saw mill, flour mills (2). City owns all public utilities. Govt. hydro-elec. power and light. Surrounded by rich agricultural and fruit belt. Alt. 754. Pop. 16,000.

SPECIAL OPPORTUNITIES.—Automobile factory, steel foundry. 20,000 h.p. electric power at cost. City offers loans, free sites and tax exemptions. Write to Sec. Bd. Trade.

SANDWICH (Essex Co.), adjoining city of Windsor, on Detroit River, opposite Detroit, Mich. On Essex Terminal Ry. (freight), connecting with C.P.R., G.T.R., Wabash, Pere Marquette, Michigan Central Rys. Elec. rys. to Windsor, Tecumseh (12 miles); Essex, Belle

River, Kingsville and Leamington (40 miles). Direct S.S. connection with all lake ports. Hotels, Vendome, Royal, Oak, Dominion. 3 churches, public and separate schools, Assumption College for boys (R.C.), bank. Dominion fish hatchery. Hydro-electric power, \$30 per h.p. up. Natural gas. Town owns water and sewerage systems. Industries, salt and heavy chemicals, canning, wine, bricks, lumber, 2 coaling docks for steamers. Neighborhood supplies salt. The centre of a rich mixed farming and tobacco-growing district. Many peach orchards and vineyards. A good golf and country club. Pop. about 8,000.

NOTE.—U.S. Steel Corporation commenced work on \$20,000,000 plant. Buildings will cover over 1,000 acres, making Sandwich the second largest steel centre in America.

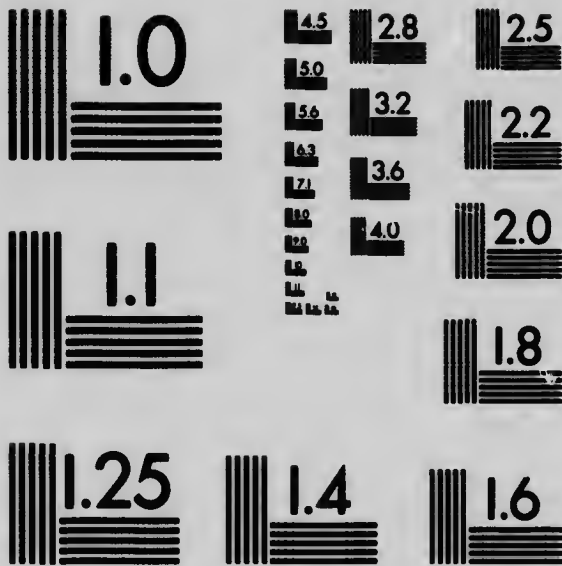
SPECIAL OPPORTUNITIES.—Any industry using steel and iron, automobiles, farm implements, etc., passenger ferry across river, building mechanics' houses. To new industries excellent shipping facilities by rail and water, 2 miles of river front available for factory sites, tax exemptions and other liberal inducements. Cheap power, natural gas. Good labor conditions. Write Sec. Border Chamber of Commerce.

SARNIA (Lambton Co.), at mouth of St. Clair River, on Lake Huron, on G.T.R., Pere Marquette Ry. Steamers to points on Lakes Huron and Superior. Hotels, Vendome, Northern and 4 others. 12 churches, public and high schools. City owns water and sewerage systems. Govt. hydro-elec. power. Nat. gas. 5 banks and 2 loan cos. Industries include lumber mills, wood-working, stoves, bridge works, threshers, oil refinery, salt works, saw mill, cannery, jams, brass goods, overalls, cigars, lubricants, wire fencing, dish washing machinery, automobile castings and plants, etc. The city has two miles of water front, at any point of which boats can make dock safely. Neighborhood supplies petroleum and salt. Alt. 587. Pop. 12,000.

SPECIAL OPPORTUNITIES.—Iron or steel industries, shipbuilding, evaporator, flax mills, elevators. Cheap freight rates to Northwest, and cheap coal. Write Sec. Bd. Trade.

SAULT STE. MARIE, on St. Mary's River, connecting Lakes Superior and Huron. 440 miles n.w. of Toronto; 350 miles n. of Detroit, Mich., on C.P.R. and Algoma Central and H.B. Ry. S.S. connection with all Great





MICROCOPY RESOLUTION TEST CHART
NATIONAL BUREAU OF STANDARDS
STANDARD REFERENCE MATERIAL 1010a
(ANSI and ISO TEST CHART No. 2)

Lake ports. Hotels, Windsor, Algonquin, St. Charles and others. 7 churches; schools—1 high, 1 technical, 6 public, 3 separate. Federal building, library, park. City owns sewerage, light and water systems. Elec. power. 8 banks. Industries include Algoma Steel Corporation, bricks and tiles, Alg. Cent. Ry. car shops, Lake Superior Paper Co., Spanish River Pulp and Paper Co.'s head office, wholesale produce, fish, tar and chemicals, paper, elec. power, foundry and machine shop, trap rock, brewery, stump pullers, iron works, dry dock and shipbuilding plant, several wholesale houses. Neighborhood supplies iron, copper, silver, gold and lumber. Good fishing and shooting. Golf and country club. Pop. 19,500.

NOTE.—Dry dock and shipbuilding plant under construction.

SPECIAL OPPORTUNITIES.—Grain elevators, flour mills, tanneries, industries using iron ore, pig iron or steel, woodworking, boots and shoes, furniture, farm implements, saw mills, boxes, sashes and doors, cars, car wheels, machinery and tools, laundry, hotel. Good labor conditions. Inducements on application. Write Sec. Bd. Trade.

SEAFORTH (Huron Co.), 113 miles n.w. of Toronto, on G.T.R. Hotels, Commercial, Queen's. 5 churches, separate and public schools, collegiate institute, public library, 3 parks, 2 banks. Industries include furniture, engines and threshers, leggings and gloves, staves and bolts, sashes and doors, saw mill, grist, flour, oatmeal and flax mills, cooperage, tannery, aerated waters, apple evaporator, creamery, pottery, brick and tile yards. Niagara elec. power. Neighborhood supplies salt, hardwood, sand and clay for brick and tile works. The centre of a very rich mixed farming and fruit-growing district. Pop. (including suburbs) 3,500.

SPECIAL OPPORTUNITIES.—Industries using farm and dairy products. To bona fide industries town offers free sites, tax exemptions and other inducements on application. Write Sec. Bd. Trade.

SIMCOE (Norfolk Co.), on G.T.R. and Wabash Rys., connecting with C.P.R., also on L.E. & N. Elec. Ry. Hotels, Battersby, Melbourne, Queen's. 6 churches, high and public schools, Carnegie library, park, country club, 2 newspapers. Nat. gas, Govt. hydro-elec. power. Town owns water and sewerage systems and electric light plant. Industries include the largest canning factory in Canada, tin can plant, shoe factory, greenhouses, evaporator, 2 pickle factories, tannery, steam warping

tugs, saw mills, seeds, creamery, woollen mill, flour mill, shoddy mill, fruit preserving. The centre of a very rich fruit and dairy district. Good duck shooting. Pop. 4,000.

SPECIAL OPPORTUNITIES.—Industries using farm and dairy produce as raw material, excellent shipping facilities and cheap power from Niagara electric and natural gas. Immunity from labor troubles. Liberal inducements. Write Sec. Bd. Trade.

SMITH'S FALLS (Lanark Co.), on Rideau River and Canal, 45 miles s. of Ottawa, 60 miles n.e. of Kingston, on Can. Nat. Ry., C.P.R. Hotels, Rideau, Russell and 3 others. 7 churches, public and separate schools, collegiate institute, 2 hospitals, 2 theatres, town hall, free library, market, park, elec. light. Town owns water and sewerage systems. 800 h.p. elec. power, 1,000 h.p. water power available, 4 banks. Industries, farm implements, malleable castings, stoves, ploughs, bricks, sashes and doors, grist mill, 3 wholesale houses. Summer resort at Rideau Lake (7 miles), tennis, golf, etc. Alt. 423. Pop. 7,000.

SPECIAL OPPORTUNITIES.—Cigar factory, hardware store, any industry employing female labor. Liberal inducements on application. Write Sec. Bd. Trade.

STRATFORD (Perth Co.), 88 miles w. of Toronto, a div. point on G.T.R., 6 lines enter. Hotels, Windsor, Queen's, Mansion and 3 others. 14 churches, 6 public schools, collegiate institute, Prov. Normal School, business college, 2 parks, 6 banks. City owns light, water and sewerage systems. Industries, 60, including G.T.R., locomotive repair shops, wire fences, furniture, threshing machines, flour, Kindei Bed Co., Ltd., bricks and tiles, chairs, music cabinets, woollens, agricultural implements, pork packing, ladders, hay forks, dairy supplies, brewery, rattan furniture, corrugated drain pipe, flour mill machinery, desks, bridge and iron works, clothing, office specialties, upholstered furniture, steel bed springs, harness specialties, grain picklers, knitted goods, traction engines, cigars, hoops and staves, furniture frames, brassware, brass beds, davenport. Pop. 17,000.

SPECIAL OPPORTUNITIES.—Furniture and all wood-working industries. Bonds of bona fide industries guaranteed by city. Free sites and low fixed assessments. Niagara elec. power. Labor conditions good. Steady supply of skilled iron and wood workers. Write Sec. Bd. Trade.

STRATHROY (Middlesex Co.), on Sydenham River and G.T.R., C.P.R. 6 miles south. Hotels, Queen's, Ameri-

can. 2 schools, collegiate institute, armoury, park, 5 banks, 2 builders' factories, 2 flour and grist mills, can- nery, cheese and butter factory, 2 furniture factories, woollen mill, stoves, 2 egg-packing establishments, bas- ket factory, 1 cold storage, 2 saw mills, pianos, handles. Niagara elec. power. A first-class agricultural and dairy country. Neighborhood supplies hard and soft woods. Alt. 744. Pop. 2,998.

SPECIAL OPPORTUNITIES.—Town offers reduced taxes and loans to factories. Write the Mayor or Town Clerk.

STURGEON FALLS (Nipissing Dist.), on Lake Nipissing, on C.P.R. Hotels, Kirkup, Windsor, St. Louis. 4 churches, public, separate and model schools, 2 banks. Water and sewerage systems owned by town. Indus- tries, large pulp and paper mills, soda water, saw mill, planing mill, electric light and power company, flour and grist mill. Big game and fish plentiful. Starting point for French River and west arm of Lake Nipissing tourist routes. Daily steamers. Alt. 685. Pop. 3,200.

SPECIAL OPPORTUNITIES.—Woodworking machinery. Write Mgr. Royal Bank.

TSUBURY (Sudbury Dist.), county town on C.P.R. main line (div. point) and 5 converging branches, on Can. Nat. Ry. (2 branches), and Algoma Eastern Ry., 3 passenger trains daily. Hotels, Nickel Range \$4.00, Balmoral \$3.00, and 4 others. 5 churches, 2 separate schools, 3 public (1 new \$40,000), high school (Govt. School of Mines in connection), Jesuit College. Local and suburban elec. line to Copper Cliff. Town owns waterworks, electric light and power. Court house, gaol, registry office, 2 hospitals, 3 newspapers, opera house, skating and curling rinks, 6 banks. Industries, planing mills (5), bricks (2), sashes and doors (4), cement blocks, brewery, soda water (2), flour mill, pickles, wholesale cold storage (2), candy, compressed feed, foundry and machine shops. Executive offices of 6 wholesale firms, 4 railways construction cos., and 25 lumber cos., 2 large smelters recently constructed. Centre of nickel district. See under Mining—"Nickel" and "Iron." Wages from nickel industry paid in Sudbury District \$2,000,000 an- nually. Alt. 850. Pop. 6,700.

NOTE.—British America Nickel Co. expects to make large power developments on Wahnapiatae River in next few years.

SPECIAL OPPORTUNITIES.—Industries and wholesalers of all kinds. Workmen's houses. Shipping facilities on 7 lines of railways. Cheap power, 20,000 h.p. developed.

Abundant iron ore and nickel ready for smelter. Town offers fixed assessments and other liberal inducements. Write Sec. Bd. Trade.

THOROLD (Welland Co.), on Welland Canal, on Can. Nat. Ry., G.T.R., Niagara Elec. Ry. to Niagara Falls (9 m.), St. Catharines (4 m.), Port Dalhousie (7 m.), Ponthill (5 m.), Welland (12 m.), Pt. Colborne (18 m.). S.S. connection with upper Lake ports. Hotels, City, Summit, Welland. 4 churches, high, separate and 2 public schools, library, fire hall, 4 banks. Town owns electric light, water and sewerage systems. Abundant electric and water power, nat. gas. Industries include pulp board, paper mills, tissue mills, 2 flour mills, 4 pulp mills, road binder material, glass, foundry and machine shops, woollen goods, smelter, knitting factory. In the neighborhood are stone quarries and natural cement stone. Alt. 526. Pop. 5,000.

SPECIAL OPPORTUNITIES.—Cheap power from Niagara. Town offers fixed assessments, cheap sites and other inducements to new industries. Write Industrial Commissioner.

TILBURY (Kent Co.), on C.P.R., M.C.R. Hotels, International, Empire, Balmoral. 4 churches, public, separate and continuation schools, bank, athletic field, public library. Town owns water and sewerage systems, firehall, Carnegie library. Niagara elec. power and light. Industries, handle factory, grist mill, planing mill, cannery, automobile tops, machine shop, foundry. Hissco Elec. plant employs 200 hands. A good farming district, which supplies timber, cruse oil, flax, tobacco, fruits and vegetables for canning. Alt. 586. Pop. 2,000.

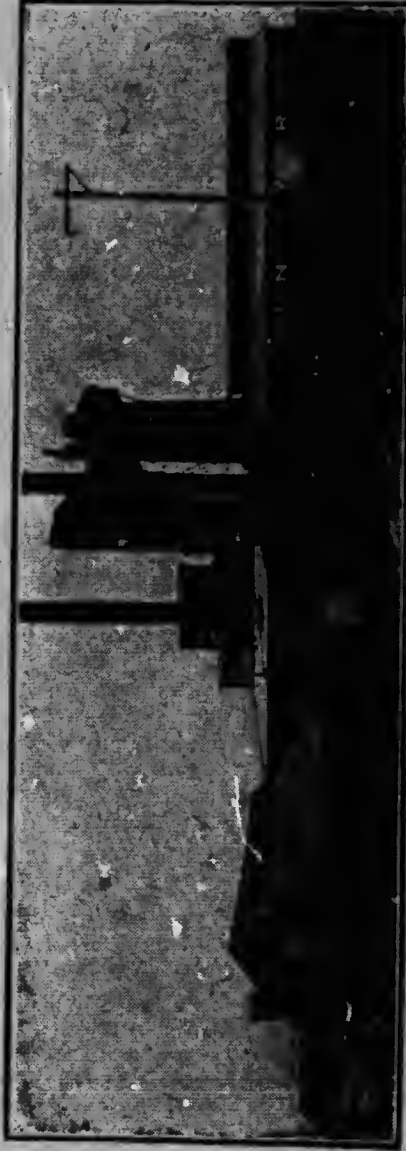
SPECIAL OPPORTUNITIES.—Nat. gas at 15c. per M cubic ft. for industrial use. Inducements to new industries on application. Write Sec. Bd. Trade.

TILLSONBURG (Oxford Co.), on G.T.R., C.P.R., N.Y.C. (M.C. Div.), Wabash Rys. Hotels, Arlington, Imperial, Royal. 5 churches, public and high schools, 3 banks. Industries include gasoline engines, machinery, grist mill, tannery, bricks, 2 foundries, hand harvest tools, flour mill, oatmeal mills, condensed milk, carriage works, show case factory, planing mills, linen goods, harvest tools, elevating and grain cleaning machinery, shoes. Niagara hydro-elec. power. Surrounded by rich dairying and fruit districts, supplying timber and brick clay. Alt. 757. Pop. 42,758.

SPECIAL OPPORTUNITIES.—New industries can obtain very cheap coal and low freight rates, free sites, tax exemptions, and possibly loan. Write Sec. Bd. Trade.

DESERONTO

A STRATEGIC POINT FOR
BIG INDUSTRIES



A Strong, Strategic Situation with Unexcelled Economic and Industrial Advantages

At head of Bay of Quinte, on Lake Ontario
Good Shipping Facilities by Rail and Water
Fine Harbor, full Welland Canal depth
S.S. Connection with all Lake Ports
The Centre of a Rich Farming District

Low Freight Rates
Raw Material at Lowest Cost
Cheap Power
Cheap Labor
Cheap Living
Cheap Rents
Cheap Homes

Liberal Inducements to Bona-fide Industries

Read description of Deseronto on page 55. For full information on openings in any line write

THE SECRETARY, BOARD OF TRADE . . . DESERONTO, ONTARIO

TORONTO (York Co.), on Lake Ontario, incorporated as a city in 1834, on Can. Nat. Ry., G.T.R. and C.P.R. Capital of Province of Ontario. Seat of Ontario Government and Parliament; Toronto University, about 4,000 students. Financial and commercial centre. Publishing centre of Canada. Hotels, King Edward, rooms \$1.50 up; Queen's, \$3.50 up, rooms \$1.50 up; Prince George, \$3.50 up, rooms \$1.50 up; Walker House, \$3.00 up, rooms \$1.50; Carls-Rite, Iroquois, Elliott House, Westminster, rooms \$1.50 up, and over 100 others. Industries, over 1,200 factories including foundry products, wood products, other, clothing, agricultural implements, automobiles, airplanes, breweries. Number of hands employed in factories, 78,500; capital invested in manufactures, \$170,000,000. Annual payroll of manufacturers, \$42,000,000. Niagara hydro-elec. power. Land area of city in 1918, 39½ sq. miles. Bank clearings, \$3,004,785,565 in 1917. Assessment for 1918, \$605,727,775. Rate of taxation, 29½ mills, exclusive of one mill war tax. Gross debt on 31st Dec., 1917, \$100,323,423. Net debt, \$75,895,976. Building permits, 1917, \$7,163,556. Alt. (at City Hall) 296. Pop. (Dom. Census 1911), 376,240. (Assessors' return for 1918) 489,681. Population has doubled since 1905.

NOTE.—1,000 acres of waste land is being reclaimed adjacent and on harbor front, centre of which is approximately 1½ miles from business centre of the city. These sites to be had at cost for commercial and industrial uses, served by 3 transcontinental railways and ship canal. Write Toronto Harbor Commission.

Suburbs of Toronto.—**Mimico.** A residential suburb, 2 miles from w. city limits on joint line G.T.R. and C.P.R., elec. ry. to city, and Toronto-Hamilton highway. Hotel, Young's. 4 churches, public library, pub. school, 2 banks, Hydro-elec. power, sewerpipe works, abrasive works, large wholesale florist. Pop. 3,800.

NEW TORONTO (adjoining Mimico), 3½ miles from w. city limits on the joint line of G.T.R. and C.P.R. and elec. ry. to Toronto. On Toronto-Hamilton highway. Hotel Lakeview. Long Branch Park (summer resort) nearby. 3 churches, 1 public school, 2 banks. Town owns waterworks, Govt. Hydro-elec. power, sewer system. Industries include Brown's Copper and Brass Rolling Mills (900 men), Reg. Boxer Wallpaper Co. (150), Ritchie & Ramsay Coated Paper (100), Goodyear Tire and Rubber Co. (1,500), Du Pont Fabrikoid Co. (200). Pop. 2,500.

SPECIAL OPPORTUNITIES.—All industries, particularly iron and steel works, automobiles, etc. Convenient

factory sites fronting on the railroad, with free inter-switching privileges. The town offers fixed assessment and other inducements. Write for further information to the Industrial Commissioner.

TRENTON (Hastings Co.), at head of Bay of Quinte, at mouth of Trent River, 100 miles e. of Toronto. Southern terminus of Trent Valley Canal. On Can. Nat. Ry. (div. pt.), C.P.R. (div. pt.), G.T.R.; on Canada S.S. Lines, Ltd., S.S. communication with all lake ports. Daily boat to Rochester, N.Y. Hotels, Gilbert, and 4 others. 6 churches, public (4), separate and high schools, Y.M.C.A., moving picture studio, eastern centre of Hydro-Elec. Commission. Carnegie library, 3 parks, 3 banks. Industries include Hydro-Elec. Power Commission's transformer stations, Weddell Dredging Co., Crosoting Co., iron concentrator, buttons, cooperage, account registers, foundry, silverware, 2 clothing, 2 sashes and doors, paper mills, wholesale lumber, cannery, sprays, evaporators, beverages, bricks. The neighborhood supplies iron, limestone and many varieties of lumber. Good fishing. Pop. approx. 8,000.

SPECIAL OPPORTUNITIES.—Cereal and glucose factory, boot and shoe factory, woodworking and specialties rubber and motor works, iron and paper industries, rolling mills, dry dock, summer hotel, industries using elec. power. Excellent transportation and power facilities. 45,000 h.p. electric power available, which is sold at cost. Good labor conditions. Free sites and fixed assessments to new industries. Write Sec. Bd. Trade.

UXBRIDGE (Ontario Co.), 40 miles n.e. of Toronto, on G.T.R., B.T. Co. Hotels, Mansion, Bascom, Arlington. 6 churches, high and public schools, 2 banks, public library, electric lighting, artesian wells. Industries include chopping mill, flour and oatmeal mills, elevator, planing mill, furniture factory, foundry. Alt. 886. Pop. 1,612.

NOTE.—Hydro-elec. power line under construction.

TWALKERTON (Bruce Co.), 120 miles w. of Toronto, on G.T.R. and C.P.R. Hotels, Hartley, Queen's and 2 others. 6 churches, public, separate and high schools, business college, Carnegie library. Elec. light and power, water and sewerage systems, 2 banks. Industries, furniture factories (2), biscuits, sashes and doors, bobbins, foundry and machine shop, roller mill, flour mill, egg and butter factory. Alt. 931. Pop. 3,000.

WALKERVILLE (Essex Co.), on Detroit River, directly opposite Detroit, Mich., on G.T.R., Wabash, terminus

of Pere Marquette, Essex Terminal Ry., connecting with C.P.R., Michigan Central and W.E. and L.S. Rys. Elec. rys. to Windsor (1½ miles), Sandwich (3 miles), Tecumseh (6 miles), and Amherstburg (15 miles). Ferry to Detroit. Direct S.S. connections with all great lake ports. Hotels, Crown, Reid's, Exchange. 4 churches, public and separate schools, public library, 4 banks. Elec. light, waterworks and sewerage. Niagara elec. power at low rate to factories. Natural gas, domestic rate 30c. per M ft. Industries include Hiram Walker's—now manufacturing chemicals and tolnol nickel products,—Parke, Davis & Co., varnish and paints (2), automobiles (5), automobile bodies, automobile trimmings, engines and valves, bridge works, drop forgings, weather strips, roofing, polishes, bones, wire fences (3), furnaces, fly paper, tobacco, clothing (2), cooperage, brewery, drugs, marine engines, asphalt works, carriage goods, crucible steel castings, concrete reinforcement, steel stamping works, overalls and shirts (2), dye and finishing works, metal stamping works, twist drills, electric welders, handles, lubricators, cement tile machines, valves and hydrants, chemicals. A rich district, supplying fruit, grain, vegetables, and tobacco. Tennis, golf, bowling and yachting. Alt. 588. Pop. 5096.

SPECIAL OPPORTUNITIES.—Iron and steel industries, automobiles and accessories, building employees' houses. Hydro-electric power. Good labor conditions. Write Sec. Board of Trade.

WALLACEBURG (Kent Co.), on Sydenham River, navigable to Wallaceburg for largest lake vessels. On Pere Marquette Ry. and Chatham, Wallaceburg & L. Erie Ry. connecting with G.T.R. and C.P.R. at Chatham and Mich. Central at Charing Cross. Passenger S.S. daily to Detroit and tri-weekly to Port Huron. Hotels, Dupont, Empire, Tecumseh, and 2 others. 7 churches, 4 schools, 3 banks. Municipal sewer and elec. light system. Waterworks, Niagara Elec. power, nat. gas. Industries, sugar refinery (400 hands), glass works (800 hands), brass goods (250 hands), cooperage, stock factory, flax mill, planing mills, machine shops, shipyards. Pop. 5,000.

SPECIAL OPPORTUNITIES.—Fruit cannery. Good shipping facilities by rail and water. Niagara elec. power, nat. gas at 12c. per M cubic ft. Inducements to new industries. Write Pres. Bd. Trade.

WATERLOO (Waterloo Co.), on C.P.R. & G.T.R. Hotels, Commercial, Alexander. 6 churches, 2 public and 1 separate schools, 3 banks, loan co. Industries

include threshing machines, furniture, brooms and brushes, boots and shoes, malt house, upholstery, office desks, distillery, buttons, mattress factory, flour mill, bricks, brick and tiles, cigars, washing machines, springs, combs, gloves, boxes, interior woodwork, shoddy, planing mill, sash and door factory, trunks and bags, barrels, cigar boxes, upholstered goods, brewery and malt factory, tannery. Head offices of 2 life 8 fire ins. cos. located here. Niagara elec. power and light. Fine farming district. Alt. 1,056. Pop. 5,090.

SPECIAL OPPORTUNITIES.—A good supply of skilled labor is available for the manufacture of furniture (frames and upholstered goods, office, school and church). General interior fittings, planing mill, sash and door factory, boots and shoes, collars and shirts, general foundry. No strikes. Tax exemptions offered, sometimes free sites and loans. Write Sec. Bd. Trade.

WELLAND (Welland Co.), on Welland Ship Canal, on Welland River, 22 miles from Buffalo, 14 miles from Niagara Falls, 8 miles from Lake Erie; on M.C.R., Pere Marquette, G.T.R., Wabash, T.H. & B., C.P.R. Can. Nat. Ry., elec. line connecting with Port Colborne, Thorold, Niagara Falls and Port Weller; Niagara, Welland & Lake Erie Elec. Ry. (loccl.). S.S. connection between tide water and Canadian Northwest, with daily freight service both ways; 2 Government docks and Turning Basin. Wireless Station. Hotels, Dexter \$3.00 up, 2 others. 11 churches, 5 public and 1 high school, business colleges, County Court House, jail, Registry Office, Hospital and Industrial Home; Agricultural Park, Merritt Park. Niagara elec. system, Ontario Power Co., Dominion Power and Transmission. Town owns water and sewerage systems; unlimited elec. power at competitive rates. Nat. gas at 30c. to 40c., with special rate to manufacturers; 6 banks. Industries, M. Beatty & Son, Canadian Billings & Spencer, Chipman-Holton Mills, Canada Forge Co., 2 foundries, Can. Automatic Transportation Co., Dair Mfg. Co., cotton mills, Elec. Steel & Metal Co., Elec. Zinc Co., Volta Mfg. Co., electro metals, cannery, furniture, Imperial Mfg. Co., carbide, overalls, chemicals, cordage, pipe mills, beds, stoves, ice cream, marble, seeds, boilers, concrete stone, tires and rubber, milling co., 4 planing mills. Situated in centre of one of the finest fruit districts in Canada. Alt. 601. Pop. 9,500; with suburbs, 10,500.

SPECIAL OPPORTUNITIES.—All kinds of factories. Electricity \$14 per h.p. per annum, 24-hour service. A fine harbor, 20 ft. of water. Write L. B. Duff, Industrial Commissioner.

WESTON (York Co.), 4 miles from Toronto city limits, on C.P.R., G.T.R. and Toronto Suburban Elec. Ry. Hotels, Eagle, Burk's. 7 churches, 3 schools (pub., sep., high), 2 banks, skating rink, public toboggan slides, golf links. Town owns water and sewerage systems. 6 miles paved sidewalks, good fire protection. Niagara elec. power and light. Industries, cycles and motors, structural steel, saw mills and lumber yards, stoves, elec. fixtures, bedsteads, mattresses, customs grain mill and, nearby, Canadian (Eastman) Kodak Co. and Nitro Products Co. Semi-annual fair. Pop. 2,250.

SPECIAL OPPORTUNITIES.—Any kind of industry requiring site near a large centre. Town offers power, light and water at cost, and low taxation. Numerous factory sites in town on both railways. Write Town Clerk, or Sec. Bd. Trade, Weston.

WINDSOR (Essex Co.), on Detroit River, immediately opposite Detroit, on C.P.R., M.C.R., G.T.R., Wabash, Pere Marquette. Elec. Ry. to Leanington (39 miles), Tecumseh (7 miles), Amherstburg (18 miles). On line of all Canadian S.S. on Great Lakes. Hotels, Crawford, British American, King George. 14 churches, 7 public and 4 separate schools, collegiate institute, 9 banks. Town owns light, water and sewerage systems. Niagara elec. power. Industries include large salt works, wire fences, tobacco, cigars, brass goods, brewery, cabinet shop, asphalt blocks, flour mill, machine shop, duplicating machines, builders' factory, paint and varnish, machine works, etc. meal, brushes, paper boxes, bentwood, cement bricks, laundry, overall factory, manufacturing chemists, pearl button works, 5 automobile factories, cereals, electrical machinery, spring beds, stoves and saw mill machinery, spark plugs, computing scales. Natural gas. Limestone and salt found in neighborhood. Alt. 580. Pop. 26,000.

SPECIAL OPPORTUNITIES.—Iron and steel industries, building houses and stores, automobile factories, foundry, salt works, hotel, glass mfg., boots and shoes, furniture, brick and tile factory. Electric power from 3c. to 5c. per k.w. Free switching service by Essex Terminal switch line connecting with all trunk lines. Free Dock. New industries offered free water, cheap sites, tax exemption. Write Sec. Bd. Trade.

WINGHAM (Huron Co.), on Maitland River, 72 miles n. of Toronto, on G.T.R., C.P.R. Hotels, Brunswick, Queen's. 6 churches, public and high schools, business college, hospital, town hall, park, library. Town owns light, water, and sewerage systems. 3 banks. Industries include planing mill, sawt works, flour mill, panel

doors, saw mill, furniture, stoves and furnaces, tannery, bricks, gloves and glove leather, carriages, electric power, creamery, fertilizers. Alt. 1,044. Pop. about 3,000.

WOODSTOCK (Oxford Co.), on G.T.R., C.P.R. Elec. ry. to Ingersoll (10 miles). Hotels, Oxford \$3 to \$3.50. New Commercial, Buckingham, New Dufferin \$2. Royal \$1.50. 12 churches, Y.W.C.A., 5 public schools, R.C. schools, 1 collegiate institute, commercial college, public library, hospital, armouries. Seat of Woodstock College (150 students). Govt. hydro-elec. power and light, 6 banks, Niagara elec. power. Industries include wagons, 8 machine shops, biscuits, furniture, woven wire fence, wheel hubs, furniture castors, farm tools, flour mill, organs and pianos, planing mill, chopping mill, soaps, stoves, oatmeal, bentwood for brooms, knitting, metal signs, wheels and sleigh runners, concrete machinery, garden tools, braid edging, gasoline pumps and tanks, silk hose and gloves, worsted goods. Good agricultural district, supplying cattle, hogs, cheese, butter, wool, hides, grain. Tennis and golf clubs, boating on Thames River. Alt. 958. Pop. 11,000.

SPECIAL OPPORTUNITIES.—Iron industries, boot and shoe factories, shirt and collar factory, electrical supplies, canning, textiles, pickling, etc. Write Sec. Bd. Trade.

NOTE

This booklet is part of The Canadian Provincial Booklet Series, the only uniform series covering each Province in Canada.

FREE COPIES of any provincial booklet can be obtained by applying to the Minister of Agriculture of that Province—Ask for Heaton's booklet.

All booklets in this series contain extracts from Heaton's **Handbooks of Canadian Resources**. Price 50c. each

Part I—Natural Resources, with guide to Government Reports

Part II—Descriptions of Towns and Industrial Opportunities

Part III—Colonization and Crown Land Regulations, Agricultural Districts, etc.

Copies may be obtained at the above price from
Heaton's Agency - - - - **Toronto**

Union Bank of Canada

Established 1865

Head Office, Winnipeg

PAID-UP CAPITAL	- - - - -	\$ 5,000,000
RESERVE	- - - - -	\$ 3,600,000
TOTAL ASSETS, OVER	- - - - -	\$153,000,000

BRANCHES IN ONTARIO

Alexandria	Fisherville	Merrickville	Portland
Barrie	Ft. William	Metcalfe	Roseneath
Belleville	Galt	Mimico	St. Catharines
Brampton	Goderich	Mt. Brydges	Shelburne
Canboro	Guelph	Newboro	Smith's Falls
Canfield	Hagersville	New Dundee	Smithville
Carleton Pl.	Haileybury	New Liskeard	Springbrook
Cookstown	Hamilton	North Gower	Stirling
Cooksville	(3 Offices)	Norwood	Stittsville
Curran	Hastings	Orillia	Sydenham
Crysler	Hepworth	Orton	Thornton
Dundalk	Hillsburg	Osgoode Sta.	Toledo
Dunnville	Islington	Ottawa	Toronto
Easton's	Kemptville	(4 offices)	(9 offices)
Corners	Kinburn	Owen Sound	Warkworth
Edwards	Kingsville	Pakenham	West Lorne
Englehart	Kitchener	Pendleton	Westport
Erin	Leamington	Peterboro'	Wheatley
Essex	Manotick	Picton	Wiarion
Fenwick	Melbourne	Plantagenet	Winchester

NEW YORK AGENCY

49 Wall Street

LONDON, ENGLAND, BRANCHES

6 Princes St., E.C.; 26 Haymarket, S.W.

Managers of the above offices will be pleased to answer enquiries regarding Canadian investments and affairs.

B. B. CARTER,

Superintendent of Eastern Branches
Toronto

