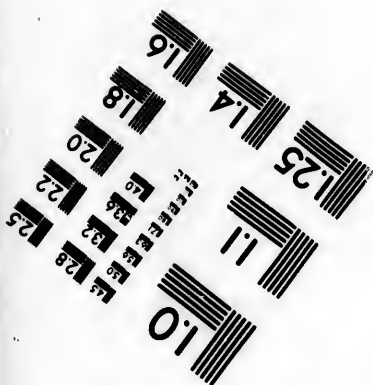
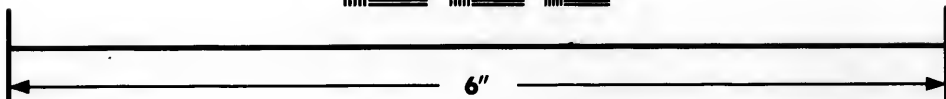
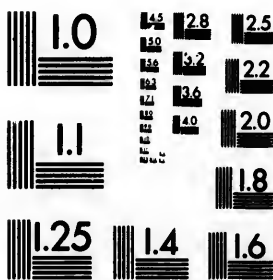


**IMAGE EVALUATION  
TEST TARGET (MT-3)**



**Photographic  
Sciences  
Corporation**

23 WEST MAIN STREET  
WEBSTER, N.Y. 14580  
(716) 872-4503

LE 28  
LE 25  
LE 22  
LE 20  
LE 18

**CIHM/ICMH  
Microfiche  
Series.**

**CIHM/ICMH  
Collection de  
microfiches.**



**Canadian Institute for Historical Microreproductions / Institut canadien de microreproductions historiques**

it  
oi

**© 1984**

Technical and Bibliographic Notes/Notes techniques et bibliographiques

The Institute has attempted to obtain the best original copy available for filming. Features of this copy which may be bibliographically unique, which may alter any of the images in the reproduction, or which may significantly change the usual method of filming, are checked below.

L'Institut a microfilmé le meilleur exemplaire qu'il lui a été possible de se procurer. Les détails de cet exemplaire qui sont peut-être uniques du point de vue bibliographique, qui peuvent modifier une image reproduite, ou qui peuvent exiger une modification dans la méthode normale de filmage sont indiqués ci-dessous.

- Coloured covers/  
Couverture de couleur
- Covers damaged/  
Couverture endommagée
- Covers restored and/or laminated/  
Couverture restaurée et/ou pelliculée
- Cover title missing/  
Le titre de couverture manque
- Coloured maps/  
Cartes géographiques en couleur
- Coloured ink (i.e. other than blue or black)/  
Encre de couleur (i.e. autre que bleue ou noire)
- Coloured plates and/or illustrations/  
Planches et/ou illustrations en couleur
- Bound with other material/  
Relié avec d'autres documents
- Tight binding may cause shadows or distortion  
along interior margin/  
La reliure serrée peut causer de l'ombre ou de la  
distortion le long de la marge intérieure
- Blank leaves added during restoration may  
appear within the text. Whenever possible, these  
have been omitted from filming/  
Il se peut que certaines pages blanches ajoutées  
lors d'une restauration apparaissent dans le texte,  
mais, lorsque cela était possible, ces pages n'ont  
pas été filmées.
- Additional comments:/  
Commentaires supplémentaires:

- Coloured pages/  
Pages de couleur
- Pages damaged/  
Pages endommagées
- Pages restored and/or laminated/  
Pages restaurées et/ou pelliculées
- Pages discoloured, stained or foxed/  
Pages décolorées, tachetées ou piquées
- Pages detached/  
Pages détachées
- Showthrough/  
Transparence
- Quality of print varies/  
Qualité inégale de l'impression
- Includes supplementary material/  
Comprend du matériel supplémentaire
- Only edition available/  
Seule édition disponible
- Pages wholly or partially obscured by errata  
slips, tissues, etc., have been refilmed to  
ensure the best possible image/  
Les pages totalement ou partiellement  
obscurcies par un feuillet d'errata, une pelure,  
etc., ont été filmées à nouveau de façon à  
obtenir la meilleure image possible.

This item is filmed at the reduction ratio checked below/  
Ce document est filmé au taux de réduction indiqué ci-dessous.

10X	14X	18X	22X	26X	30X
<input type="checkbox"/>	<input type="checkbox"/>	<input type="checkbox"/>	<input type="checkbox"/>	<input checked="" type="checkbox"/>	<input type="checkbox"/>
12X	16X	20X	24X	28X	32X

The copy filmed here has been reproduced thanks to the generosity of:

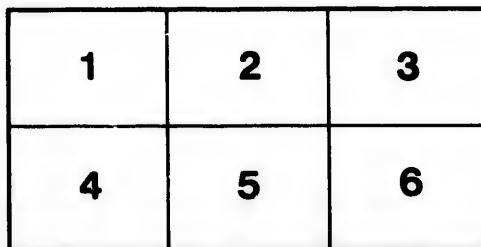
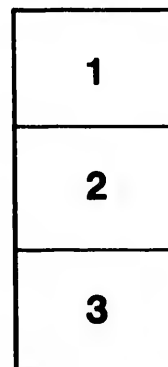
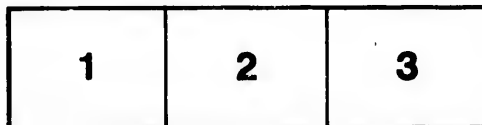
Library of the Public  
Archives of Canada

The images appearing here are the best quality possible considering the condition and legibility of the original copy and in keeping with the filming contract specifications.

Original copies in printed paper covers are filmed beginning with the front cover and ending on the last page with a printed or illustrated impression, or the back cover when appropriate. All other original copies are filmed beginning on the first page with a printed or illustrated impression, and ending on the last page with a printed or illustrated impression.

The last recorded frame on each microfiche shall contain the symbol  $\rightarrow$  (meaning "CONTINUED"), or the symbol  $\nabla$  (meaning "END"), whichever applies.

Maps, plates, charts, etc., may be filmed at different reduction ratios. Those too large to be entirely included in one exposure are filmed beginning in the upper left hand corner, left to right and top to bottom, as many frames as required. The following diagrams illustrate the method:



L'exemplaire filmé fut reproduit grâce à la générosité de:

La bibliothèque des Archives  
publiques du Canada

Les images suivantes ont été reproduites avec le plus grand soin, compte tenu de la condition et de la netteté de l'exemplaire filmé, et en conformité avec les conditions du contrat de filmage.

Les exemplaires originaux dont la couverture en papier est imprimée sont filmés en commençant par le premier plat et en terminant soit par la dernière page qui comporte une empreinte d'impression ou d'illustration, soit par le second plat, selon le cas. Tous les autres exemplaires originaux sont filmés en commençant par la première page qui comporte une empreinte d'impression ou d'illustration et en terminant par la dernière page qui comporte une telle empreinte.

Un des symboles suivants apparaît sur la dernière image de chaque microfiche, selon le cas: le symbole  $\rightarrow$  signifie "A SUIVRE", le symbole  $\nabla$  signifie "FIN".

Les cartes, planches, tableaux, etc., peuvent être filmés à des taux de réduction différents. Lorsque le document est trop grand pour être reproduit en un seul cliché, il est filmé à partir de l'angle supérieur gauche, de gauche à droite, et de haut en bas, en prenant le nombre d'images nécessaire. Les diagrammes suivants illustrent la méthode.

ails  
du  
difler  
une  
page

rrata  
o

pelure,  
à

1813

### ALLOWANCE FOR CHILDREN.

Two further Declarations to be made by you, pursuant to the Acts of the 46 Geo. III. Cap. 84. and 52 Geo. III. Cap. 147. for granting certain Allowances out of the Duties under the Management of the Commissioners for the Affairs of Taxes, to Persons in respect of the Number of their Children; being after the Rate of £4 per Cent. on the Amount of all the Assessments, for every Child above Two in Number.

The 1st, Specifying the Number and Names of your Children (if there are *above Two*) being your own Children, or the Children of your Wife, and maintained at your Expence, and not being themselves liable to any of the Assessed Taxes.

The 2d, Specifying the Rent and Number of Windows of any House or Houses to which you are assessed or assessable for Window or House Duty in any other Parish or District.

#### 1st DECLARATION.

No. of Children.	Their Names.	Place of Residence.

#### 2d DECLARATION.

Rent.	No. of Windows.	Parish of	County of
		Parish of	County of

I declare, That the above Accounts contain a true Return of all the Matters required of me by the said Act of Parliament.

Witness my Hand this                      Day of                      Signed

*Note.*—The above mentioned Allowance *not claimable* by any Person whose whole assessed Taxes amount to £45, or who does not return the whole Number of Servants, Carriages, Horses, Mules, and Dogs, and other Articles chargeable on him, in the Parish where the Claim for Allowance is made; and any Person making such Claim, without declaring the full Amount of Duties chargeable on him in this or any other Parish or District, or guilty of any Fraud in making such Claim, is subject to a Penalty of £100.—Persons having one or more Dwelling-houses out of the District where the Claim is made, must obtain a Certificate of the Amount of Duties charged on the same.

### GAME DUTIES.

If you intend to take out a Game Certificate for the present Year, *in this Parish*, whether for yourself, or for any Person deputed as Game-keeper by you, you are desired to give Notice thereof in such of the following Forms as may be applicable to your Case.

#### GENERAL CERTIFICATE,

to be obtained by Persons in their own Right.

I do hereby declare that I shall require, *in this Parish*, a General Game Certificate for my own Use for the Year 1813.—Witness my Hand,

#### GAME-KEEPER'S CERTIFICATE.

The Game-keeper being an assessed Servant of the Person granting the Deputation, or of some other Person, whose Name and Residence must be stated; also the Names of the Lands, and of the Persons granting the Deputations.

I do hereby declare that I shall require, *in this Parish*, for the Year 1813, a Game-keeper's Certificate for                      as Game-keeper  
for the Lands of                      in the County of  
the said                      being an assessed Servant to\*  
Witness my Hand,  
(\* me or to                      of the Parish of                      in the County of                      as the Case may be.)

#### GAME-KEEPER'S CERTIFICATE.

The Game-keeper *not* being an assessed Servant to any Person.

I do hereby declare that I shall require, *in this Parish*, for the Year 1813, a Game-keeper's Certificate for                      as Game-keeper  
for the Lands of                      in the County of  
the said                      *not* being an assessed Servant to  
any Person.—Witness my Hand,

