

15 128
16 132
17 136
18 140
19 144
20 148
21 152
22 156
23 160
24 164
25 168

**CIHM/ICMH
Microfiche
Series.**

**CIHM/ICMH
Collection de
microfiches.**



Canadian Institute for Historical Microproductions / Institut canadien de microreproductions historiques

10
11
12
13
14
15
16
17
18
19
20
21
22
23
24
25

© 1985

Technical and Bibliographic Notes/Notes techniques et bibliographiques

The Institute has attempted to obtain the best original copy available for filming. Features of this copy which may be bibliographically unique, which may alter any of the images in the reproduction, or which may significantly change the usual method of filming, are checked below.

L'Institut a microfilmé le meilleur exemplaire qu'il lui a été possible de se procurer. Les détails de cet exemplaire qui sont peut-être uniques du point de vue bibliographique, qui peuvent modifier une image reproduite, ou qui peuvent exiger une modification dans la méthode normale de filmage sont indiqués ci-dessous.

- Coloured covers/
Couverture de couleur
- Covers damaged/
Couverture endommagée
- Covers restored and/or laminated/
Couverture restaurée et/ou pelliculée
- Cover title missing/
Le titre de couverture manque
- Coloured maps/
Cartes géographiques en couleur
- Coloured ink (i.e. other than blue or black)/
Encre de couleur (i.e. autre que bleue ou noire)
- Coloured plates and/or illustrations/
Planches et/ou illustrations en couleur
- Bound with other material/
Relié avec d'autres documents
- Tight binding may cause shadows or distortion along interior margin/
La reliure serrée peut causer de l'ombre ou de la distorsion le long de la marge intérieure
- Blank leaves added during restoration may appear within the text. Whenever possible, these have been omitted from filming/
Il se peut que certaines pages blanches ajoutées lors d'une restauration apparaissent dans le texte, mais, lorsque cela était possible, ces pages n'ont pas été filmées.

- Coloured pages/
Pages de couleur
- Pages damaged/
Pages endommagées
- Pages restored and/or laminated/
Pages restaurées et/ou pelliculées
- Pages discoloured, stained or foxed/
Pages décolorées, tachetées ou piquées
- Pages detached/
Pages détachées
- Showthrough/
Transparence
- Quality of print varies/
Qualité inégale de l'impression
- Includes supplementary material/
Comprend du matériel supplémentaire
- Only edition available/
Seule édition disponible
- Pages wholly or partially obscured by errata slips, tissues, etc., have been refilmed to ensure the best possible image/
Les pages totalement ou partiellement obscurcies par un feuillet d'errata, une pelure, etc., ont été filmées à nouveau de façon à obtenir la meilleure image possible.

Additional comments:
Commentaires supplémentaires:

Irregular pagination : [1]-80, 83-84, 81-82, 87-88, 85-86, 91-92, 89-90, 95-96, 93-94, 97-100 p.

This item is filmed at the reduction ratio checked below/
Ce document est filmé au taux de réduction indiqué ci-dessous.

10X	14X	18X	22X	26X	30X
<input type="checkbox"/>	<input checked="" type="checkbox"/>	<input type="checkbox"/>	<input type="checkbox"/>	<input type="checkbox"/>	<input type="checkbox"/>
12X	16X	20X	24X	28X	32X

The copy filmed here has been reproduced thanks to the generosity of:

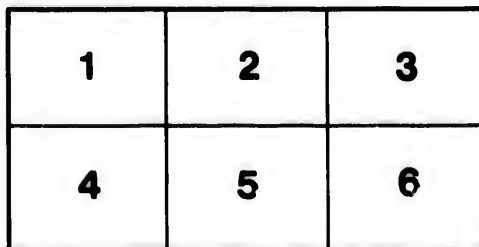
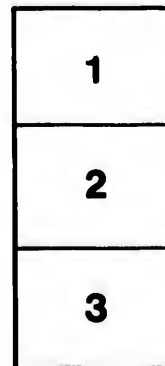
Library of the Public
Archives of Canada

The images appearing here are the best quality possible considering the condition and legibility of the original copy and in keeping with the filming contract specifications.

Original copies in printed paper covers are filmed beginning with the front cover and ending on the last page with a printed or illustrated impression, or the back cover when appropriate. All other original copies are filmed beginning on the first page with a printed or illustrated impression, and ending on the last page with a printed or illustrated impression.

The last recorded frame on each microfiche shall contain the symbol \rightarrow (meaning "CONTINUED"), or the symbol ∇ (meaning "END"), whichever applies.

Maps, plates, charts, etc., may be filmed at different reduction ratios. Those too large to be entirely included in one exposure are filmed beginning in the upper left hand corner, left to right and top to bottom, as many frames as required. The following diagrams illustrate the method:



L'exemplaire filmé fut reproduit grâce à la générosité de:

La bibliothèque des Archives
publiques du Canada

Les images suivantes ont été reproduites avec le plus grand soin, compte tenu de la condition et de la netteté de l'exemplaire filmé, et en conformité avec les conditions du contrat de filmage.

Les exemplaires originaux dont la couverture en papier est imprimée sont filmés en commençant par le premier plat et en terminant soit par la dernière page qui comporte une empreinte d'impression ou d'illustration, soit par le second plat, selon le cas. Tous les autres exemplaires originaux sont filmés en commençant par la première page qui comporte une empreinte d'impression ou d'illustration et en terminant par la dernière page qui comporte une telle empreinte.

Un des symboles suivants apparaîtra sur la dernière image de chaque microfiche, selon le cas: le symbole \rightarrow signifie "A SUIVRE", le symbole ∇ signifie "FIN".

Les cartes, planches, tableaux, etc., peuvent être filmés à des taux de réduction différents. Lorsque le document est trop grand pour être reproduit en un seul cliché, il est filmé à partir de l'angle supérieur gauche, de gauche à droite, et de haut en bas, en prenant le nombre d'images nécessaire. Les diagrammes suivants illustrent la méthode.

e
étails
s du
modifier
r une
Image

s

errata
to

pelure,
n à

6,

32X



NIHIMA

194

Ayamie-Mazinahigna.



KANACHCHATAGENG.



MONTREAL.

IMPRIMÉ PAR LUDGER DUVERNAY,
A L'IMPRIMERIE DE LA MINERVE.

.....
1830.

AMERICA

Journal of the American Society

1830

(7)



NEW YORK

Printed and Sold by G. B. RAY, at the American Book Concern, No. 21 NASSAU ST. N. Y.

1830

84116

IBWA MACHL
KIKKINOHAMAGENANIWANG
NABOWEWIN.



KIN keget Jezus ke pizindonang,
enowek ej eka nagussin, enowek chaye
ki gat inottak ke kakikkimihamintj kit-
chi ayamie tipahigeyang, kit ayamie
kakikwewin—chaye nin gat inottama-
gonan; chawenimichinam kitchi paga-
kittawangitch, wewenint kitchi papa-
ganawenindamang, gaye kakik kitchi
tipahigeyang. Katinakis ingi.

NIKAMUWIN.

Mino-manito chawenimichinam

Ni tehinang asso otittan.

Kinahamav ka chingenimihamintch,

Kitchi eka wikat pattatiyan.

Ondas ijan meno-manitowigan,

Wassakunenindahamawinam

Kitchi gweyak anichininiwiyang

Mi dach wakwing kitchi otittamang.

NIHINA AYAMIE-NABOWEWIN.

† *Ejinikazowining Wekossissitch, gaie Weossitch, gaie Wenichichitch-manito.*

NAKKUMATA KIJE-MANITO.

Mizi ka nittawiton Diu ka igon, kin ondjita-napitch katibenimiang, ki nakkuminimin, kwenatch entian ka kis ganaweniang nongum (tibikong, ongajigak:) kakik chaweniminam, kakik ki wi pamittonimini ketako pematissiwangen.

ANWENINDIZOTA.

Ka ningot inenindanken ka kich patatiang, ondjita ni chingenindananan ni matchi ainttowininan, ka minawatch ningga wi tissimin: kokki chaweniminam ka kichewatissin, ka nitta chawenimiang; kinahamawinam kitchi eka ningot totawiamintch ka chingenimiamintch.

PAKITINAMATIZOTA KIJE-MANITO.

Mi wentji pakitinamonang ej owiyawiyang gaie ej otchichagussiyang, tibeniminam, kakik tibenindan ket aintowangen gaie inigik ke gittimagissiwangen: ni kokwatissimin-na tipan ke wij

tibenindizoyang, pejikwan pegusseniminang kitchi gwayak osseyang meg-watch ij pimatissiyang, gaie ki nipuyang wakwing kitchi taguchimiyang.

TEPWETTAWATA KIJE-MANITO.

Kije-manito ka tibenimin, kakkina ka kikkinohamagoyang ij-ayamiayang, kin kit ikitonaban, mi wentji kakkina tepwettamang.

APPENIMUTA KIJE-MANITO.

Kije-manito ka nitta tepwen, songa ej-appenimuyan ka iji wanwindamawiyang, gaye songa ej appenimuyan ki gwissis Jezus ot animissiwinan, ondjita-songa ki pihin kitchi witokkawin gweyak kitchi iji pimatissiyang ondaje-akking, kakik gaye wakwing tchi minawassihin.

SAKIHATA KIJE-MANITO.

Kije-manito ka tibenimin, ondjita ki kitchitwawenindagus, ondjita gaie ki sakihigus, mi wendji sakihinan awachamenj kakkina kegun ej-ininiwagak, ni sakihak gaie kakkina anichinabek

kin ondji, mi epitch sakihitizoyan, mi
 •pitch sakihagwa.

PAGUSSENMATA Ke. No. KA
 OYOSSIMINTCH.

N'ossinan wakwing epian, kitchitwa-
 wenindagwak kit ijinkazowin, i nagus-
 siwanen keguna kis apiang, ki pamitta-
 go indibi wakwing, keguna gaie pamit-
 tagon ondaje akking; nongom ongajigak
 mijichinam ke mitjiyang, mechchagwam
 gaie kajigakin mijichinam; ka ningut
 nind-inenindansimin awiya ka nichkiha-
 mindjin, ka gaie kin ningut inenindan-
 ken ka nichkihinang, kinahamawinam
 wach-pattatyangin, atchitch ininama-
 wichinam mayanattak wetissikagoyan-
 gin. Katinakis ingi.

ANAMIKKAWATA KA. MANI.

Kit anamikun Mani ka muckineska-
 goyan ayamie-onichichiwin, ki papaga-
 nawenimik mizi ka kijittotch, awach-
 chamenj epitch sakihintwa kitchikwek
 awachchamenj ki sakihigo: misi gaie
 kitchitwawenindagussi ki gwissis Jezus
 ka inintch; napitch ka onichichin, Ma-
 ni, Diu ka o-kwisissimatch, gaganotta-

mawinam ketako pimatissiwangen, gaie
 wich-nipuyang gaganottamawinam.—
 Katinakis ingi.

NABOWATA ENENINDAGUSSING KITCHI
 TEPWETTAMANG.

Nin depwettawa pejiko Diu wekos-
 sissitch, mizi ka nettawitoch, wakwi ka
 kijittotch, akki gaie ka kijittotch; nin
 depwettawiman gaie o-kwisissan ondjita
 pejiko, Jezus-krist ni tepahiganinan,
 Wenichichinitjin-Maniton o ki anichi-
 nabewihigon; Manin Tessanawitjin mi
 wan o pinenottagon; okimawigubon
 Pons-Pinat ka inintiban apitch nenekat-
 chihintch Jezus, mi dach petakakwa-
 hontch tchipayatigong, mi dach nes-
 sintch, ningwahakkanintch; anâmakka-
 mikong pendike, ka nisso kijigatinik ap-
 itchipahitizo; mi dach wakwing ejatch,
 mi dach epitch o kitchipikining o-ossan
 Diu mizi ka nittawitonitjin, kokki wak-
 wing-ondji kata pitch'iji ondaje akking:
 mi dach ke minonènimatch kakkina
 anichiuaben pematissinitjin gaie nipu-
 nitjin, nin depwettawa gaie Wenichi-
 chitch-Manito; eniguk wakkamigak

tewek eyamiatjik, ayamie witchihitiwok
 kitchi gwayak ijiniwakiziwatch ; kata
 kassikaniwan o matchi ijiniwakiziwini-
 wan, kata y-apitchipak kakkina anichi-
 nabek ej-owiyassiwatch ; kakik gaie ta
 pimatissikmi teyepwettaman.

WINDAMAWATA KE. Mo. KAKIS IJI
 PATTATIYANG.

Ni windamawa Kije-Manito mizi ka
 nittawitotch, kitchitwa Mani kakik ka
 tessenakwewitch, kitchitwa Michen ka
 kitchitwa Anjgeniwitch, kitchitwa Jan
 Batist, kitchitwa Pien gaie Paun, Jesus-
 san ka mino-anokkittawagubanenik ;
 kakkina Wakwing endadjik, gaie kin
 n'osse ki windamon onzam iki patta-
 tian patta-inenindaman, patta-weyan,
 patta-totaman gaie, nin nind indowin,
 nin nind indowin, nin ni-kije-nind in-
 dwin ; mi wentji pagussenimagwa kit-
 chitwa Mani kakik tessenakwewitch, kit-
 chitwa Michen ka kitchitwa y-anjeni-
 witch, kitchitwa Jan Batist, kitchitwa
 Pien gaie Paun Jezussan ka mino-anok-
 kittawagubanenik, kakkina Wakwing
 endadjik kitchi gaganottamawiwat-
 ch, gaie kin n'osse gaganottamawichin.

KIJE-MANITO OT-IKITOWIN.

1°.—Mizi ka kihijittotch Diu ka inintch, ki ga pejiko-mannadjiha, enigokutehen ki ka pejiko-sakiha.

2°.—Ka anutch Diu ki ga winassiwa.

3°.—Kijik ki ga mannadjiton, eka ka anokkinaniwang.

4°.—Ki nikihigok ki ga pamittawak, kinowens wich-pimatissin ondaje akking.

5°.—Ka awiya ki ga nissassiwa.

6°.—Eka ka witapimatch, ka ki ga pamenimassiwa.

7°.—Ka ki ga kimotissi.

8°.—Ka gaie ki ga kinawichkissi.

9°.—Ka awiya ki ga missawenimassiwa.

10°.—Ka gaie kegun awiya ki ga missawenindamawassiwa.

PISSINDANDA ENENIMINANG KA KIJE AYAMIE-GANAWABAMINANG.

1°.—Ki gat ayamia enamesikkaniwangin Kije-Manito-Kijigak gaie tassin mennadjittaganiwangin.

2°.—Wewenint ki ga kopesseu kanage ningutin tassin ka ningo-piponagakia.

3°.—Ki ga kkommuniu tassin ayapitchipatjin

4°.—Ki ga mannadjitonan mannadjitaganan ka igong kitchi mannadjitong.

5°.—Ki ga kihiguchehim ni-mittaot-tasso-kun ebwa machchi y-apitchipatch, gaie tassin egong kitchi kihiguchchi-mong.

6°.—Ka mitjikken wiyas tchipaya-tigo-kijigak, ka gaie Maui-kijigak.

7°.—Kegun nittawigitton, ki gat ayamie-pakitinike endotamowatch eyamihatjik.

ANJENIWAK PAGUSSENIMATAK.

Nind Anjeniminatuk, kit anonikowa kit okimaminan Jezus kichi papawitji-wiyang; papawitjihichinam, kakik ganaweniminam, kakik mikkominam ka kich kikkinohamagoyang, kakik kinahamawinam changenimihamintch.

KITCHITWA JOSE PAGUSSENIMATA.

Kitchitwa Jose, tipan nihina akki ka ganawenindaman, ki ki nawenj' chawenimik Jezus, songeniminimin tchi gaganottamawiyang, ki sakihik Jezus ka ganawenimatiban akking, ki ga pamittag tchi gaganottamawiyang.

KITCHITWA MICHEN PAGUSSENIMATA.

Kitchitwa Michen, kin napitch ka kitchitwa Anjeniwian, kin ka chagotchihatiban Matchi-Manito, witjihichinam kitchi gaie ninawent chagotchiangitch ka chingenimihamintch.

**PAGUSSENIMATA KA WITCH
IJINIKAZOMANG.**

Kin ka witch-ijinikazominan gaganotamawichin kat kikkinowabaminan ejayamiayan akking, kekunagaie wakwing witikeminan ki nipuyan akking.

**PAGUSSENIMATAK KAKKINA WAKWING
ENDANAKITJIK.**

Ka mino-apiyeg wakwing, sayakihi-nag mizi ka kijittotch ka wabameg, gagamottamawinan kitchi tetabiskutch mino-apiyang wakwing.—N'ossinan wakwing.....kit anamikun Mani.

O kich windamagubanin Mani ot Anjeniman mizi ka kijittotch: R. Mi dach Wenichichitch-Manito o kis mawandonan Mani o miskwi kitchi kijittotch Jezus wiyow. Kit anamikun Mani, &c.

Ni tibenimik mizi ka kijittotch: R. Ekiton, mi ke tian. Kit anamikun Mani, &c.

Ki o wiyassihitizo Kije-Manito o kwisissan: R. Kitchi wich tanakkimnang. Kit anamikun Mani, &c.

Kitchitwa Mani Diu ka okwisissimat, gaganottamawinam: R. Wakwing kitchi minawassihiamintch Jezus.

AYAMIATA.

Kije-Manito ka tibenimiyang ki pagusseniminimin kitchi onichichihyang ij-otchitchagussiyang, kit anonaban kit Anjenim kitchi awi-windang e wij anichinabewihitizotch ki kwissis Jezus ka inintch: ki ki wabama gae ki kwissis epitch animissipan apitch nessintch tchipayattigong ninawent-ondji, mi wendji pagusseniminang kitchi minoapitchipahyang. Katinakis ingi.

MEMORARE.

Kwenatch Mania, ka tessenakwe-wiyan, ka nittachaweningen, mikkawin: kawikat nondaganiwansinon kitchi ki anwettawatch ka pagussenimik kitchi

gag
wi
ni
nad
nim
kw
kav
nar
gai

we
onc
we
ma
ke
ni
da
ka
hi
Je
ni
W
na
m

gaganottamowatch. Ka tessenakwe-
 win, ka okimikwa tayessanawidjik,
 nka gaie ej-apenimoyan ki yow, ki pi
 nadjinijimin, ki pi nansikkon, ij-gachke-
 nimdaman iki pattatiyan, ki pi nipak-
 kwitton. Jezus ka okwississimatch,
 kawin webinichikken ej-pagussenimi-
 nan, enabigis chawenindamittawichin,
 gaie pamittawichin. Katiaakis ingi.

ANWENINDIZOTA.

Kije-Manito n'osse ondjita nind an-
 wenindis ka ki nichkihinan i pattatiyan;
 ondjita ki kitchitwawenindagus, mi
 wendji chingenindaman kakkina ni
 matchi aintowin awachchamenj kakkina
 kegon ej ininiwagak. Ka win kegon
 nind iji chingenindanzin eji-chingenin-
 daman ni matchi-aintowin. Kin-ondji
 ka ondjita onichichin, ka ondjita saki-
 higussin. Kassihamawichin enabigis
 Jezus ot ijini kazowining-ondji; ni kiji-
 nindan kitchi eka minawatch pattatiyan.
 Witokkawenimin, chawenimin, ka mi-
 nawatch nin ga tissi, ket inenimiwane
 mi kakik ke wich tiyan.

J. M. J.

Kitchitwa Mani ninginan, Jose gaganottamawichinam, (Jezus chawenimichinam; 3.) Kakkina wakwing endanakkियेग, andjissigabawittawik Kije-Manito songa kitchi gaganottamawiyang.

NAKKUMATA KE. Mo.

Mizi ka kijitton, ki tepwetton, ki sakihin, ki wi papamitton, ni chingenindan ni matchi aintowin, witjihichin kitchi nibuakkayan, ichpeming-wakwing kitchi ejaian nepuyan akking. †.

Menadjittaganiwangin.—Kin mizi ka nittawiton ka nisso-pejikon, ki nakkuminimin ka kis otissabandahiyang nyamiewin Jezus ka mino-apitchipahitizoyanban keguna gaie nihawent ki mino-apitchipahiang witchihichinam kitchi papamittonang gaie kitchi tepwettonang; inenimichinam kitchi mino nipuyang: kin Jezus ka mino-apitchipahitizoyanbau witjihichinam kitchi eka wanenindamang i songeniamang, kekona meno apitchipayang, gaie kakkina

anichinabek ka kijihatjik; witjihichi-
nam gaie kitchi kakik sakihinang eni-
gokkuteheyang. Katinakis ingi.

Mayettizowini-Kijigakin.—Kin Jesus
ka kijewatissin, chawenim kakkina nak-
kawe mettizowining epitjik kitchi wi-
batch agwachchipahatwa, tipan tchana-
wemangitjik ki ga chawenimak, iji mino
enindaman i wi kijikkamawangittwa
kakkina inigik ka iji pi mino totaman:
gaie ninawent chawenimichinam, keguna
ki guttamang kitchi niskihinang; witji-
hichinam kitchi angwamenindamang
inap kitchi kijikkamatizoyang. Kati-
nøkis ingi.

Ayanjenikijigakin.—Ni kitchitwa An-
geniminati k ka nittapapaganawenimi-
yang, kin gaie tipan kichitwa Angenim
tipan ka papagana wenimiyan, kakkina
gaie Anjenituk witjihichinam kitchi
kakik tepwettamang eji kakkiki-miko-
yang: kinahamaw ka chingenimiaminteh
matchi Manito. Kakkina gaie wakwing
kitchitwa anichinabetuk ka nigan apiyeg,

ki songeniminimin kitchi gaganottama-
wiyang, keguna ki wij danakkiminang
wakwing pon-pimatissiyang. Katinakis ingi.

Jwasep-Kijigakin.—Kin kitchitwa
Jose, Jezus ka ganawenimatiban ikis
abinotchenjiwitch, kin nihina akki ka
ganawenindaman ki sangeniminimin
gaganottamawichinam kitchi gwayak
osseyang ketako pematissiwangen, gaie
wich nipuyang gaganottamawichinam,
kichi eka ponittoyang epitch song' aya-
miayang. Katinakis ingi.

Echpiniganiwangin.—Kin Jezus kit-
chitwa Hostiwining ka kazoyan mem-
wetch ki yow i wich nawapochiyang ki
nakkuminimin ni yawinang ka pindiken
tassin kwamuniwiyangin, mi wentji to-
tawiyang i wi pejikoton ki tehinan;
witjihichinam kitchi kakik tibeninda-
mang kitchi sakihinang, witjihichinam
kitchi gaie ninawent pejiko-sakihitiyang.
Mi ma inenindamanban wentji pejikot-
tawian, y-oham ni Manito mitjimimi-
nan. Katinakis ingi.

Tchapayattig-o-Kijigakin.—Kin Jezus ka kotakitoyanban tchipayattigong kichi ondji minawassiyang wakwing, witjihichinam waki kitchi inenindamang kwetakitoyangin. Kin ka nissigonyanban kitchi ondji agwachchimiayang, ondjita keget songa ki nakkumin awachchamenj ka sakihiyang epitch sakihitizon ej-owiyassin, witjihichinam kitchi eka wikat pattatotamang missawatch wi nissigoyang. Katinaxis ingi.

Mayani-Kijigakin.—Kitchitwa Mani ka tessianakwe-okwisissin, kin Diu okwisissimatch, gaganottamawinam. Katinaxis ingi.



IBWA-MACHI WISSININANIWANG.

Mizi ka kijitton onichichiton nongum ke mitjiyang kitch-mino-èjininiwakissiyang. † Ejinikazowining, &c.

KI ICHKWA WISSININANIWANG.

Mizi ka kijitton ki nakkuminimin ka kis mino-achchamiyang kitchi songitehechkawiyang kitchi eapitch papamittong. † Ejinikazowining, &c.

AYAMIE-KAKWETJINTIWIN.

D. Kit ayamiha-na ?

R. Nind ayamiha, nin gi chawenimik
Kije-Manito iki sikkahandazoyan.

D. Wekunen kekkinawatchihintwa
eyamihatjik ?

R. Tchipayatikokkewin.

D. Tchipayatikonamatizun ?

R. Ejinikazowining Wekossissitch,
gaie Weossitch, gaie Wenichichitch-
Manito.

D. Awenin ka kijihinang ?

R. Kije-Manito ki kis kijihigonan.

D. Anin inenindamogubanen Ke.
Mo. apitch kajihinang ?

R. Jnenindamoguban nin ga kikke-
nimigok, nin ga sakihigok, nin ga pa-
mittagok, mi ket ingi Wakwing kitchi
minawassiwatich.

D. Anin ej-inagussitch Kije-Manito ?

R. Ka win kikkenindagusissi epitch
onichichitch Ke. Mo, kakkina o ki
kihijitton, Wakwi gaie akki, kakkina
kegun win pejiko o tibenindan.

D. Owiawina Kije-Manito ?

R. Ka win o wiyawissi Ke. Mo.,
napitch Manitowi.

D. Andi ej-apitch Ke. Mo.?

R. Mizi mizi te Ke. Mo., wakwing
gaye akking, ka win ningutiji ichkwa-
y-apissi.

D. Kakkina-na o wabandan Kije-
Manito?

R. Kakkina o wabandan Ke. Mo.,
enowek kegun kayataganiwangin ki
mitonenindjiganinang.

D. Kakik na teban Kije-Manito?

R. Kakik teban Ke. Mo., Kakik gaie
kata te.

D. Manek-na Kije-Manituk?

R. Ka win manessik, pejiko eta Ke.
Manito.

D. Anin endachchiwatch Kije-Mani-
towiwining?

R. Nissiwok. Kije-Manitowiwining,
Wekossissitch, gaie Weossitch, gaie
Wenichichitch-Manito.

D. Kije-Manitowi- a Wekossissitch?

R. Kije-Manitowi Wekossissitch.

D. Kije-Manitowi-na Weossitch?

R. Kije-Manitowi Weossitch.

D. Kije-Manitowi-na Wenichichitch-Manito?

R. Kije-Mautowi Wenichichitch-Manito.

D. Nissiwok-na dach Kije-Manitok?

R. Ka win nississik, pejiko eta Kije-Manito, ondjita nisso-pejiko.

D. Ka-na i nissiwatch pejik awachamenj kitchitwawenindagussissi?

R. Ka win pejik awachamenj kitchitwawenindagussissi, napitch tabiskutch kitchitwawenindagussik.

D. Wekunen-ondji napitch tabiskutch kitchitwawenindagussiwatch?

R. Pejikwanini o Kije-Manitowiwi-niwa, mi wentji napitch tabiskutch kitchitwawenindagussiwatch.

D. J. nissiwatch awenin ka anichinabewihitizotch?

R. Weossitch ki anichinabewihitizo.

D. Andibi ej-anichinabewihitizogubanen Jezus?

R. O wiyawing kitchitwa ikwe Mani, kakik enowek tessianakwewiban.

D. Ania inenindamogubanen apitch

enichinabewihitizotch Kije-Manito o
kwisissan.

R. Jnenindomoguban nin gat agwach-
chimak anichinabek ichkuteng, wak-
wing dach kitchi minawassiwatich.

D. Anin ke ki tiyanguban anichina-
bewihitizosigubanen Jezus?

R. Kakkina ki ta ki mettizonanaban.

D. Awenin ka nikiatich Jesussan?

R. Kitchitwa ikwe Mani sa o ki ni-
kihan

D. O nidjanissi-na kitchitwa Mani,
kikangwi-na gaie pekich.

R. Pekich o nidjanissi kitchitwa Ma-
ni, pekich gaie kikangwi, Wenichichi-
nitjin-Maniton o ki otissigon; Kije-Ma-
nito o machkawiziwin o kis akawatech-
kagon, mi dach ka ondji onidjanissitch
kitchitwa Mani, enowek ej-eka kikke-
nimassik ininiwan, ket-na kegun o pwa-
nawitton Kije-Manito.

D. Anin ejinikazotch Kije-Manito o
kwisissan ka anichinabewihitizotch.

R. Jezus ijinikazo.

D. Anin apitch ka nikitch Jezus.

R. Neu kitchi-mitasso-mittana tasso piponetoguban ekko akkiwanogubanen apitch nakigubanen Jezus.

D. Anin endasso piponagak nongum ka akko nikitch Jezus?

R. Achaye ningotin kitchi-mitasso-mittana tasso piponagat achitch nich-wassin mitasso mittana achitch nisso-mittana-tasso—pipon ka akko nikitch Jezus otenawensing Bethlehem ka ijnikateg.

D. Anin ejinikatek ihim tibik apitch nakigubanen Jezus?

R. Mi ihim tibik *Noen* ka ijnikatek.

D. Anin tasso pipon ka pimatissigubanen Jezus ondaje akking?

R. Nisso mittana tasso pipon achitch nisso pipon pimatissiguban Jezus ondaje akking.

D. Anin endogubanen Jezus meg-watch pematissitch ondaje akking?

R. Ki kis kikkinohamagonaban ke totamang kitchi gwayak ijininiwakissiyang, gaie ki kis kijikkamawanissigonan kitchi onichichiwatich ki tchitchagussinani.

D. Anin entogubanen Jezus kitchi kijikkamawanissinang.

R. Iki nanekatchihintch, iki gaie nis-sintch.

D. Ki nipuwan-na Kije-Manito o kwisissan Jezus ka inintch.

R. Ki nipu tchipayatigong.

D. Awenin ot indowin wentji ki niputch Jezus?

R. Kakkina anichinabek ot indowin-wa wentji ki niputch Jezus; inenindamoguban nin gat agwachchimak anichinabek ichkuteng, Wakwing dach kitchi minawassiwatich.

D. Andapitch nipoguban Jezus?

R. Sakwaninik.

D. Anin ejinikateh ihim kijikapitch nipogubanen Jezus?

R. Kitchitwa tchipayatiko-kijik ijinikate.

D. Andapitch apitchipahitizoguban Jezus?

R. Ka nisso kijigatinik kach niputch.

D. Andapitch Wakwing ejaguban.

R. Ni-mittana ka tasso kijigatinik kach apitchipahitizotch.

D. Anin apitch kach anonatch Wenichichinitjin-Maniton kitchi songitehechkawanitch ka makkatewikonayenitjin?

R. I kijigak *Pentekot* ka ijinikatch, nano mittana ka tasso kijigatinik kach apitchipahitizotch.

D. Kije-Manitowi-na Jezus?

R. Kige-Manitowi Jezus.

D. Pekich-na anichinabewi gaie Jezus?

R. Pekich anichinabewi Jezus.

D. Andi ej-apitch nongum Jezus Ij-Kije-Manitowitch?

R. Jezus Ij-Kige-Manitowitch mizi mizi te, Wakwing gaie akking, ka-win ningotiji ichkwa-y-apissi.

D. Andi ej-apitch nongum Jezus ij-anichinabewitch?

R. Jezus ij-anichinabewitch Wakwing te, gaie kitchitwa okanistiwining.

D. O nagatan-na Jezus Wakwi kitchi apitch kitchitwa Okanistiwining?

R. Ka win o nagatansin, pekich Wakwing api, pekich gaie api Kitchitwa Okanistiwining.

D. Minawatch-na-kata pitch-iji Jezus ondaje akking?

R. Minawatch kata pitch-iji Jezus pon-akkiwaninik, kitchi minonenimatch kakkina anichinaben.

D. Ki ga nipumin-na?

R. Ondjita keget nipumin apitch ket inenindamokwen Ke. Mo.

D. Anin ket ingi ki yawinan ki nipong?

R. Akking ta ningwawanginikaten.

D. Kakik-na kata y-atten ki yawinan anam-anwang ej-ningwawanginikatek?

D. Ka win kakik kata y-atesinon, kokki ta y-apitchipamagaton pon-akkiwang kitchi minoneniminang Jezus.

D. Nipu-na gaie ki tchitchagussinang?

R. Ka win nitta nipussi

D. Anin ke titch ki tchitchagussinang ki nipong?

R. O ka nansikkawan kije-maniton kitchi minonenimigotch.

D. Andibi ket ijatch ki tchitchagussinang ki minonenimigotch Kije-Maniton?

R. Songa nebuakktjik Wakwing ta ijik, kije-pattattowining endappinetjik

anam-akkamikong kakik kata mokwak-kizok, pattattowinensing endappinetjik kata nakkawe kassihakizok.

D. Anin ejinagwak Wakwing?

R. Wakwing mi indibi netta eji-minawanigwak, mi indibi kakik eji minawas-sinaniwang ej-wabamintch Kije-Manito.

D. Awenin Wakwing ket ijatch?

R. Kawikat ki pattatissi eneniudagussitjik Wakwing ta ijik, gaie payattatitjik songa-anwenindizowatch ibwa machi nipuwatch.

D. Anin ejinagwak anam-akkamikong?

R. Anam-akkamikong mi indibi natch animissinaniwan, mi indibi payattatitjik ta mokkwakkizok, matchi-Maniton o ka wimbinemawan.

D. Awenin anam-akkamikong ket ijatch?

R. Kije-pattatowining endappinetjik anam-akkamikong ta ijik, kakik ke taje animissiwatich.

D. Anin ejinagwak ej-nakkawe-mettizonaniwang?

R. Mi indibi ej-nakkawe kassibakki-

zowatch ayanwenindizotjik gaie patta-
towinensing endappinetjik, kitchi teb
kijikkawawatch Kije-Maniton ibwa-ma-
chi Wakwing ijawatch.

D. Kachkihak-na anam-akkamikong
mayettizotjik kitchi agwachchimintwa?

R. Ka nitta kachkiassiwak, kakik
kata mokkwakkizok.

D. Nitta kachkihak-na kitchi agwach-
chimintwa ayanwenindizotjik nekkawe-
mettizotjik?

R. Nitta kachkihak.

D. Anin ejininiwagak pattatowin?

R. Pattatowin missa ej-anwettawintch
Kije-Manito.

D. Anin endassweyagak pattatowin?

R. Nijwayagaton pattatowin: patta-
towin ka kegichkamang apitch wechki
anichinabewiyangun, kotak itach kina-
went tibinawe ka wij pattatiyang.

D. Anin ejininiwagak pattatowin ka
kegichkamang apitch wechki anichina-
bewiyangun?

R. Nittam anichinabe Adam inawin-
tiban ot indowin, ka o pamittawassiwa-

banen Kije-Maniton mi wentji pattatowinang.

D. Anin ejininiwagak pattatowin ka wij-pattatiyang?

R. Mi ihi kinawent tibinawe mejihiti-zoyang ekko piziskenindamang.

D. Anin endassweyagak pattatowin kinawent tibinawe ka wij pattatiyang?

R. Nijwayagaton pattatowin kinawent tibinawe ka wij pattatiyang: kije-pattatowin gaie pattatowinens.

D. Anin ejininiwagak kije-pattatowin?

R. Kije-pattatowin missa ondjita i kitchi anwettawintch Kije-Ma.

D. Anin endotagemagak kije pattatowin?

R. Kije pattatowin ki makkamigonanan ayamie-onichichiwin, gaie kakikke ichkuteng kit appakinigonanan.

D. Anin ejininiwagak pattatowinens?

R. Pattatowinens missanond ej-anwettawintch Kije Manito. -

D. Anin dach endotagemagak pattatowinens?

R. Pattatowinens ka win anawi kit appitchi makkamigossinanan ayamie-

onichichiwin ij-onichichiwatç ki tchit-
chagussinaniç, enowek memandjich o
wannadjiton.

D. Andibi ket ijawatch kije-pattato-
wining endappinetjik.

R. Kye-pattatowining endappinetjik
anâm-akkamikong ta ijk, kakik ketdaje
animissiwatç?

D. Andibi ket ijawatch pattatowinen-
sing endappinedjik.

R. Pattatowinensing endappinedjik
nakkawe-mettizowiniug ta ijk, Kitchi-
teb kijikkawawatch Kije-Maniton ibwa-
machi Wakwing ijawatch.

D. Anin endassing kije-pattatowin?

R. Nijwassinon kije-pattatowin, Sas-
sekawin, sasakisiwin manatissiwin, mis-
sawenintiwin, nipatissiwin, nichkatissi-
win, kittimiwin.

D. Anin ejiminiwagak ayamie-manito-
kazowin *Sacremet* ka ijinikatek?

R. Ayamie-kikkinawatjihitiwin ka
nagwak, ka kijittogubanen Jezus kitchi-
onichichiwatç ki tchitchagussinaniç.

D. Anin endassing ayamie-manito-ka-
zowinan *Sacremet* ka ijinikategin?

R. Nijwassinon ayamie-manito-kazowinan Sacrement ka ijinikategiu; sikkahandatiwin, songitehechkagewin, kopessewin, okanistiwin, ayamie-nominitiwin, ka makkatewikunayewin, ayamie-wiwindiwin.

D. Ani ejininiwagak sikkahandatiwin?

R. Sikkahandatiwin ki kassihamaganan pattatowin ka wiyakichkagoyang i nikiyang; ki wangomikonan Ije-Manito, tabiskutch wenidjanissingin kit apittenimigonan.

D. Awiya sikkahandazotjin, mi nagutch netta kayassihamawintch pattatowin ka wiyakichkagotch ej-ochki anichinabewitch.

R. Ka win eta kassihikatessini; tabiskutch-sa kakkina kassihikateniwan minigik ka kis pattatagubanen ibwa machi sikkahandazotch.

D. Nijin na awiya ta sikkahandazo?

R. Ningotin sa gutch eta ta sikkahandazo awiya.

D. Awenin ka nitta ayamie-sikkahandagotch?

R. Mekkatewikunayek-sa eta win-

wa nitta sikkahandagek ; enowek itacn. tassik ka makkatewikunayek kakkina anichinabek o ta sikkahandawawan songa-y-akussinitjin.

D. Anin endotang ka ayamie-sikkahandagetçh ?

R. Nipi o siginamowan o skatikonning ka y-akussinitjin, pekich ikito : ki sikkahandon ot ijinikazowining wekossitch, gaie Weossitch, gaie Wenichitch Manito.

D. Anin ejininiwagak songitehechkagewin.

R. Songitehechkagewin ki minigonan-wenichichinitjin-maniton kitcki songitehechkonang.

D. Wekunen wentji memandjich passanoëonang ka ayamie ganawabaminang apitch ayamie-nominimang ?

R. Kitchi eka nichkenimangwa nechkeniminanguk, kitchi gaie pekatch kottakenindamang ningut entiyangun.

D. Wekunen-wentji tchipayatikkonang ?

R. Kitchi eka agatchittamang ayamiewin.

D. Anin ejininiwagak kopessewin sa-
orement ka ijinikatek.

R. Kopessewin ki kassihamagonan ki
matchi ahintowininan eko sikkahanda-
gong.

D. Kakik-na kassihikateniwan kwa-
pessewitjik o matchi ahintowiniwan?

R. Ka win kakik kassihikatessinini-
wan kwapessewitjik, mi eta songa ayan-
wenindizotjik, gaie dach meno-kopes-
sewitjik.

D. Anin ke totang awiyak kitchi mi-
no-kopessewitch?

R. Nan-wayak kata totam : 1°. Nit-
tam, o ka pandawenindanan kakkina o
matchi ahintowinan ; 2°. Nij-wayak,
songa o ka webinanan, o kat ichkwa-
yenindanan ; 3°. Niss-wayak, ta ine-
nindam ka minawatch nin ga tissi ; 4°.
Ne-wayak, kakkina inigik ka pattato-
gubanen o ka windamawan ka makka-
tewikanayenitjin ; 5°. Nan-wayak, o ka
kakizoman Kije-Maniton gaie anichi-
naben ka nichkihatch.

D. Anin ejininiwagak ayamie-nomi-

nitiwin ka minintwa songa ka y-akus-
sitjik?

R. Ayamie nominitiwin ka minintwa
songa ka y akussitjik ot ayamie-son-
gitehechkagonawa, gaie o notjimohigo-
nawa naningotinon.

D. Anin ejininiwagak ka makkate-
wikunayewin sacrament ka ijinikatek?

R. Ka makkatewikunayewin mi eji-
minintwa ka makkatewikunayewitjik
ayamie-onichichiwin kitchi anamensik-
kewatch, kitchi gwayak kikkinohama-
gewatch, gaie kakkina kitchi wunwenint
totamowatch mekkatewikunayek ene-
nindagussiwatich kitchi towatch.

D. Anin ejininiwagak ayamie-wiwin-
tiwin sacrament ka ijinikateg?

R. Ayamie-wiwintiwini mi ejiminint-
wa ayamie-nipawitjik ayamie onichichi-
win kitchi sakihitiwatch, kitchi mino-
nittawikihawatch o nidjanissiwani aya-
miewin-ondji, gaie kitchi mino ejiwebis-
siwatch eji mino ijiwebissiwatich meno
ayamie-wiki entitjik.

D. Anin ej ininiwagak kitchitwa okanistiwin sacrament ka ijinikatek?

R. Mi ontjita ej apitch kitchitwa okanistiwining Jezus Knistus ij anichinabewitch gaie Ij Kije-Manitowitch, wiyov, o miskwi, o tchitchagussan, o Kije-Manitowiwin, kakkina nominikazohitizo pakwejiganens gaie chominabo ot ijini-nagussiwining.

D. Awenin ka kijittotch kitchitwa okanistiwin sacrament ka ijinikatek?

R. Jezus knist o ki kijitton.

D. Anin apitch kajittogubanen?

R. Ningot o kijik ibwa machi niputch.

D. Anin inenindangiban Jezus apitch wach kijittotch kitchitwa okanistiwin?

R. Inenindamoguban: keyabatch ninga witikemak eyamiatjik, ninga songitehechkawak. Kitchi nibuakkawatch, ninga minawassihak mino komminiwi-watch.

D. Wekunen eyotch Jezus apitch wach kijittotch kitchitwa okanistiwin?

R. O kis ottapinan pakwejiganens, o kis ayamittawan, o kis matinamawan

kakkina ka makkatewikunayenitjin ka papa witjiwagubanen ej ikitotch, ottapinik, amuk gaie kakkina, mi ma ohum ni yow : mi tabiskutch o kis ottapinan minagan, chominabo ateniguban minaganning, o kis ayamitton, o kis mina gaie ka makkatewikunayenitjin ej ikitotch ; ottapinamuk minikkwattamuk gaie kakkina mi ma ohum ni miskwi : mi dach ij anonatch ka makkatewikunayenitjin kitchi kachkitonitch gaie winawa kitchitwa okanistiwin.

D. Awenan enonatjin Jezus kitchi pakitinamagutch wiyow ?

B. Ka makkatewikunayenitjin o kis anonan.

D. Anin apitch ihim endotamawatch mekkatewikunayek ?

R. Apitch enamensikkewatjin.

D. Anin endotang ka makkatewikunayetch ej anamensikketch ?

B. Mi apitch mechkut osseni Jezus wiyow pakwejiganensing gaie o miskwi chominabong ; mi dach ij pakkitinamawatch Kije-Maniton Jezus wiyow anichinaben ondji.

D. Anin engi keabatch enamessikka-
niwangin ?

R. Mi apitch gaie win Jezus tibinawe
o pakitinamatizun wiyowo ossan anichi-
nabek ondji.

D. Pattatowa-na awiyak eyamihassi-
kun enamessikkaniwangin mennadjitta-
ganiwangin ?

R. Pattatowa ochcha ej anawi kach-
kittotch kitchi awi ayamihatch ; mi ma
iji kakanzominang ka ayamie-ganawa-
baminang : ej-ikitotch, ki gat ayamia
enamessikkaniwangin Kije-Manito-Kiji-
gak, gaie tassin mennadjittaganiwangin.

D. Pattatowa-na gaie wikat pandi-
ketch enamessikkaniwangin mennadjit-
taganiwangin ?

R. Pattatowa gaie win eka minawatch
witjiwetch ej anamessikkaniwaninik.

D. Wekunen ka mannadjittong kit-
chitwa ostiwining ?

R. Jezus wiyow atteni.

D. Tagunini-na o miskwim Jezus ij-
kazotch pakwejiganens ot ijinagussiwi-
ning ?

R. Tagunini gaie o miskwi.

D
mina
guss

R
kina

D
naye

nan-

R
o pil

siwin

D
ning

ij an

R
Ij K

chin

D
zus

towi

R
dach

o pw

D
zus

R

D. Tagunini na Jezus wiyow ayamie-minaganing ka miskwagamik ot ijina-gussiwining?

R. Tagunini gaie kiki-memiji-kak-kina.

D. I nenawinatch ka makkatewiku-nayetch kitchitwa ostiwin, o nenawinan-na gaie Jezus wiyow?

R. Ka win o nenawinassiwon, mi eta o pikkwenan pakwejiganens ot ijinagussiwon,

D. Api-na Jezus kitchitwa ostiwining Ij-Kije-Manitowitch, pekich gaie ij anichinabewitch?

R. Api Jezus kitchitwa ostiwining Ij Kije-Manitowitch pekich gaie ij-anichinabewitch.

D. Wekunen-wendji tanenimang Jezus kitchitwa ostiwining Ij-Kije-Manitowitch gaie ij-anichinabewitch?

R. Win ondjita ikitoguban Jezus, ka dach nitta-kinawichkissi, ka gaie kegun o pwanawitossin.

D. Napitch-na ki mino-totagonan Jezus epinitjin kitchitwa ostiwining?

R. Wanina kis sakihigunan, o pina-

han ki tehinang ayamie-onichichiwin, ki witjihigonan kitchi mino ijininiwakissiyang, gaie ki ga mino y-apitchipahigonan-pon akkiwang.

D. Anin endowatch ka kommuniwitjik?

R. Jezussan o pindikagohan o teiwang, Ij-Kige-Manitowinitch gaie ij anichinabewinitch.

D. Wekunen wentji minawassiwatch gwayak ka iji kommuniwitjik.

R. Newin-inigik ot igi minawassihan: o mintjimeniman wiyawing. Ka mino kommuniwinitjin, anyantch o chaweniman kitchi songitehechkawatch, inap kitchi machkawizinitch kekochich wij wayejimigonitch; ot iji-kikkahamawan kitchi apitchipanitch ej-o wiyawinitch, wakwing kitchi ijanitch kiki gaie o tchitchagussan.

D. Awiyak wach mino kommuniwitin, anin dach ke totang o tchitchaguchin-inakkak?

R. Awiyak wach mino kommuniwitin, kata mitonenindizo pinama, kitchi eka kegon mayanattatinik tagussinik o

tehing, ta songa anwenindizo, ka win memendjich mayanattatinik o ka kichkanzin, kata mino kopessewi, songa o ka tepwettawan Jezussan epinitjin kitchitwa ostiwining; o ka pejikkweniman kitchi sakibatch, ka y awiyan o ka chin-genimassiwan.

D. Awiyak wach mino-kommuniwitin, anin dach ke totang wiyawing inakak?

R. Ka win appine-gutch ej-abita tibikatinik akwi o ka midjissin, ka gaie ta minik wessi: ka win gutch anutch kata pimi inapissi wich ayamihatch: ka win onichichinsinon onzan awiyak sesseka-kunayetjin; ka gaie onichichinsinon awiyak kitchi kotaki kunayetj.

D. Anin minawatch ket inenindang awiyak pechutch ehaye kitchi kommuniwitch?

R. Ta inenindam: keget api Jezus kitchitwa ostiwining; ta makatenindam epitch kichewatissinitch, epitch kitchitwawenindagussinitch, enowek nin ga wittapinak anichinabek enenindang.— Ta yangwam-enindizo, ta mitonenindam

kakkina inigik ka pattatogubanen ; minawatch ayagwitta o ka wawejitton kitchi anwenindizotch, mi dach anyantch awachchamenj kitchi songenindang.— Enigokkutehetch o ka sakihan Jezussan kitchi tepahiganatch. Mi ket inenindang awiyak chaye pechutch kitchi kommuniwitch.

D. Nabowen eji-nabowenaniwang tchi-bwa kommuninaniwang ?

1°. TEPWETTAWATA. JEZUS.—Jezus enowek eka ka wabaminan enowek songa kit indanenimin kitchitwa ostiwining, mi wentji mannadjihinan i pejikosakihinan.

2°. TABASSENINDIZOTA —Jezus ka kije-manitowiyen, kakkina ka tibenindaman, kwatissiyen wach pendikawiyen ni tehing, pingwing epittenindagussiyen.

3°. SAKIHATA.—Wanina ki sakihin Jezus, kwenatch n'osse, ki pejiko enimin, kakkina gaie anichinabek ni sakihak, keguna kis tepahigewatch ki yow, ka y-awiya ni chingenimassiwa.

4°. APENIMUTA.—Kwatissiyang wach kommuniwiyen, enowek mekkawenin-

damonan ki kichewatissiwini kit inenimin, Jezus o ka onichichiton nin de kitchi mino-kommuniwiyan.

5°. ANWENINDIZOTA.—Jezus, songa nind anwenindis ka nichkihinan; miwentji anwenindizoyan, napitchi i saki-higussin; wendji gachkenindaman mekkawenindamonan ki kichewatissiwini. ka minawatch kiga nichkihissinon, nindawatch nont nipuyan. ibwa-machi minawatch nichkihinan.

6°. MISSAWENINDANDA.—Ondas kwenatch Jezus, ondas pi-libenindan nin de; ondjita ni missawenindan kitchi y apittaman nin de, ondjita keget nin de ki nandawenimigon ejinandobitch michchewe nebakwedjin.

D. Anin dach minawatch ke totang awiyak ki passikwitch kitchi awi kommuniwitch?

R. Kata awi wewenint mino-nipakwi tehik kommunattik; pipakiweyanens o ka tessiginan: kitchi chakkamonigotch mekkatewikunayenitjin kitchitwa ostiwinan, memandjich kata tetakikkweni, mitchi kata inapi, pangi kata tawani,

pangi gaie kata sakitenaniweni: mi dach ki chakkamonintch kitchitwa ostiwin, kata sipottoneni, kata nawa-kikkweni, kata wikwatchito pakikatch kitchi kunnatch wibitch ibwa-machi ninganematch o toning. Kichpin aguk-kinitch kitchitwa ostiwin o nagaskong, ta wikwatchito pekatch kitchi pakkwattanematch, o tenan o kat ayon kawin-wikat o ka wi ayossinan o nindjin.

D. Anin minawatch ke totang awiyak chaye ki ichkwa kommuniwitch?

R. Ki ichkwa kommuniwitchi, apitch ke passikwinaniwang. mamawi gaie win ta passikwi kitchi awi nipakwitch kokki, mi dach kitchi wewenint nakkumatch Jezussan ka pendikagotjin o teing: mino-agach pinama kata ayamie. memaudjich-kinowenj ka kata sikussi.

D. Nabowen eji-nabowenaniwang ki ichkwa kommuniwinaniwang?

1°. MANNADJIHATA JESUS —Jesus ka tibenimin, ka kazoyan kitchitwa ostiwinag nin-ondji, Ij Kije-Manitowijan gaie ej-anichinabewiyan, enigokkutehe-

yan ki mannadjihin, kin ma ki ki kijitaw kakkina minigik eji-taniyan, mi wentji mannadjihinan.

2°. NAKKUMATA.—Jezus kwenatch n'osse ki nakkumin ka kis pindikawiyen ni tehing, ki sakihin enigokkuteheyan: kawikat nin ga wanenindansin ej-minototawin.

3°. PAKITINAMAWATA.—Jezus ka ti-benindaman ni pimatissiwin, ki pakitinamon ni yow gaie ni tehitchagus: ti-benindan ke towanen, gaie inigik ke kotakitowanen, kitchi wakwing minawassiyen.

4°. SAKIHATA.—Jezus tebenimin ondjita ka sakihigussin, ondjita ki sakihin enigokkuteheyan; enabigis sakahan nin de echkam echkam kitchi sakihi an.

5°. PAGUSSENIMATA.—Jezus ki pagussenimin mino-ijininiwakissiwin gaie ayamie-onichichiwini, widjihichin kitchi eka-wikat wanenindaman ej-ayamian, gaie kitchi pejiko-tepahiganinan.

6°. PAKITTENIMATA MATCHI-MANITO. Ondjita ni pakittenima Matchi-Manitowanina ni chingenindan ni matchi ahin-

towin, kawikat nin ga tepahigesinak metchi manitowitjik; kin dach ij pejikon Kije-Manito n'osse, ni tepahigen ki yow, chawenimichin.

D. Pattatowa-na awiyak kwammunissigan?

R. Pattatowa ochchia awiya teb piziskenindang eka kommuniwiteh kana-ge ningotin tassin ka ningo-piponagak-kin (koni i kittimiteh-ondji kitchi kikinohamawanteh, koni gaie kawewenint wi kopessewissituk, gaie ka o wi webinansinatuk o matchi ijiwebissiwini :) ot anwettawan-ma ka maya-ayamie-ganawabinitjin ka ininang: ki ga kommunyu tassin ayapitchipatjin.

D. Ondjita-na pattatowak ka matchi kommuniwiteh?

R. Ondjita pattatowak ka matchi kommuniwiteh, o wiyagitonawa Jezus-Wiyow, songa o nichkihawan Kije-Maniton, eka anwenindizossigwa, ta y-animissiwak eapitch eapitch kakikke ichkuteng anam-akkamikong.

SONGITEHECHKAGEWIN.

D. Anin ejininiwagak songitehechkagewin sacrament ka ijinikatek?

R. Songitehechkagewin ki minigonan Wenichichitch-Manito, gaie ki muchkineskagonan ot ayamie-onichichiwin kitchi songitehechkonang.

D. Kije-Manitowina Wenichichitch-Manito?

R. Kije-Manitowi Wenichichitch-Manito.

D. Ka-na ki pindagussinan Wenichichitch-Manito apitch ka sikkahandagong?

R. Keget anawi ki pindikagonan Wenichichitch-Manito apitch ka sikkahandagong; anich itach apitch eyamienominigong, awachamens ondjita ki muchkineskagonanan ayamie onichichiwin, gaie awachamens ki songitehechkagunan Wenichichitch-Manito kitchi songa ayangwamenindamang enenindagussing ej-ayamiyang.

D. Anin eji chawemininang Wenichichitch-Manito ej-ayamie-nominigong?

R. 1. Wenichichitch-Manito ki kikkawenindamihigunan, ki kikkinohamagunan epitch onichichitch Kije-Manito ka nisso-pejikotch, gaie epitch minawanikwenindagwak wakwing.—2. Ki witokkawenimigonan enigukkuteheng kitchi sakihang Kije-Manito.—3. Ki kikkinohamagunan ke totamang kegun ayanimak entiyangun.—4. Ki songitehechkawenimigonan kitchi eka pwanawittong eninang Kige-Manito.—5. Ki machkawenindamihigunan kitchi eka ningut-iji agatchittong kit ayamiewininan.—6. Ki pinahamagunan ki mitone-nindjiganinang kitchi guttamang pattatowin.—7. Ki totagunan kitchi eka sekihigoyang nipuwin, kitchi eka guttamang tehi nanekatchihigong gaie gutch kitchi nissigong Kige-Manito ondji, gaie ayamiewin ondji.

D. Wekunen minawatch endotonang songitehechkagewin *Sacrement* ka ijini-kateg?

R. Songitehechkagewin ki totagunan kitchi napitch songenindamang ej-anc-kittawang Jezus, gaie minissinowatis-

sing kitchi mikanang Matchi-Manito, kitchi eka chagutchihinang nananj kitchi nipong.

D. Wekunen-wendji kinahamagong nijin kitchi ayamie-nomininang ka ayamie-ganawabitch.

R. Mi-wendji kinahamonang, ka ma wikat ta kassihikassinon ki tchittchagussinang ningutin hi kich ayamie-nominigong.

D. Wekunen-wendji nanint ka ot abatchitossinawa ej anawi ayamie-nominintwa?

R. Mi ihm ondji, ej eka gweyak iji-ayangwamenindamowatch hi ki ayamie-nominintwa.

D. Anin endotang ka ayamie-ganawabitch ej-ayamie-nominatch?

R. Tessinindjini o chtikwanining ke nominadjin, o gaganottamawan, ot ayamie-nominan, o tchipayattikonamawan, gaie menandjich o passanowewan.

D. Anin ejininiwagak ij gaganottamawatch?

R. Ka ayamie-ganawabitch o pagus-

seniman Wenichichinitjin-Maniton kitchi pindikawanitch eyamie-nominatjin.

D. Anin ejininiwagak hi tessinindjinitch o chtikwanining ka ayamie-nominatjin?

R. Mi apitch pandikawatch Wenichichitch-Manito meno-ayamienomimintjin.

D. Wekunen-wentji memandjich pasanoweonang eyamie-ganawabaminang apitch ayamie-nominigang?

R. Kitchi ekassa nichkenimangwa nechkenimimanguk, kitchi gaie pekatch kotakenindamang ningut eutiyangun.

D. Wekunen-wendji tchipayattigckonang?

R. Kitchi eka agatchittamang ayamiewin.

D. Anin ke towatch chaye pechutch kitchi ayamie-nominintwa?

R. Onichichin tchi bwa machchi kegun eka mitjissigwa; ka onichichinsinon onzam sassekakunayewatch; ka gaie onichichinsinon kitchi kotaki kunayewatch; ka onichichinsinon awiyak

nawakikkwenitch apitch ke nominintch,
ka ta tetakikkweni, mitchi ta inapi.

D. Wekunen ke nabowetch awiyak
ibwa machi ayamie nominintch.

R. Mi yuhum ke nabowetch :.....
Kije-Manito N'osse ki tepweton, ni
tepwetan gaie kakkina ka iji kikkino-
hamagoyang ej-ayamiayang. Kit ana-
mikun Wenichichiyen-Manito, ki pihin
kitchi pindikawiyen ni tehitchagussing
kitchi muchkineskagoyan kit ayamie-
onichichiwin, Ki makatenimin epitch
nitta chawenimiyen ej anawi ki nichki-
hian. Ondjita songa mind anwenindis
minigik ka kich pattatiyan, keget ond-
jita songa kis sakihin enigukkuteheyan,
keguna kakik ki apittawin ni tchitcha-
gussing, keguna ki chawenindagussiyan
eji kijikkamawanichchiamintch Jezus.

Mi gaie yuhum ke nabowetch :.....
Ondas ijan Wenichichiyen-Manito, &c.....
Mi gaie yuhum pejik.....*Mino-Manito*
chawenimichinam, ni tehinang asso olittan,
&c....3. Mi yuhum keabatch pejik.....
Ondas ijan ka kijiyang, &c....88.

D. Anin ke totang awiyak ki ichkwa ayamie nominintch?

R. Ta awi antj nipakwi kitchi nak-kumatch Kije-Maniton; ka ta inenindam, napitch ni chawenindagus hi ki ayamie-nominigoyan, ka wikat nin ga wanenindansin nind ayamiewin.

D. Wekunen ke nabowetch ki ichkwa ayamie nominintch?

R. Mi yuhum ke nabowetch :
Kit anamikun Wenichichiyen-Manito; ki nakkumin hi ki chawenimin, hi kij ayamie-nominigoyan; ki mannadjihin enigukkuteheyan. Ki pagussenimin, chawenimichin kakik wakwing kitchi witchminawassiminan. Ganawenimichin tchi eka kegun chagutchihigoyan ni mitonenindjiganing mayanattak; chawenimichin kitchi mino-pimatissiyan, mi dach ki nipuyan wakwing kakikke kitchi widanakkiminan. Katinakis ingi.

NABOWEWIN

*NAYABOWENG IBWA MACHI MITONE-
NINDIZONG WA KOPESEWINGIN.*

Kwenatch Jezus ka agwachchimiyan, kin ka kakikke sakihin, kin pinawigo wentji pihian nin ka kakikke ojiminan, kin sa nongum ki ki pinahan ni dehing kitchi pikizissipattoyan. Ondjita songa nin depwettan, ki ki minak mekkatewikunayek kitchi kassihama-wawatch payattatinit in. Ondjita keget nin depwettan, kin sa ki nabichkag mekkatewikunayetch kitchi kizissipattotch kakkina minigik ka wiyakichkagoyan pattatowin. Ki wabama enassam apian ki nitjanis ka kitchi anwettok; ki nondamawa ekitomagatinik o te ka kitchi gachkenindamomagatinik; kin sa ki ki nichkihigun nim battatowin, gaie kakkina nin gi nichkihak wakwing endanakitjik; kwatissiyen anawi wenidjannisingin ket inenimin, enowek itach enabigis chawenimichin kin ka nitta chawenimatwa payattatidjik.—Nind appenimun ki kijewatissiwon, keyabatch nongum ki wi kassihamaw nin battato-

win. Kassa ki nandawenimassi kitchi niputch payattatitch, tayagwatch ki nandawenima kitchi awenindizotch gaie dach kitchi pimatissitch. Tebenimin, anwenindizohichin, nip gat anwenindis dach; ka win wikat ki nitta pakitenindanzin o te ayanwenindizomagan; nind appenimun ki yaw kitchi andjittawiyen nin de, kin etta nichike nind appenimun.—Ka napitch o nisita-winagohiguesissin pattatowin ni tehitchagus, o kawenindamihigun epitch manetnik o pattatowinan, ki nichkatisiwin eta o ki wikwatenindan; kwatisiyan kanage ke kijikkabamin. Ki ki pon sakihin, kin nichikke ka sakihigusin! Awenin ket attotch ni chtikwaning nipi kakik kitchi ondjikawik nissipingon hi ki nichkihinan! Keguna ki teb ondjikawik nissipingon kitchi apitchi kassihabawek kakkina nim battatowin! Keguna gaie nin tebenimin ki ijiyan ka inatiban *Madelene* apitch pa nipakkwittok enassam-apiyan kitchi songa anwenindizotch, keguna ki ijiyan gaie nin: “kitchi nibina pattatowinan

“ki kassihamago, ondjita songa hi kis-
 “sakihin.” Kije-Manito tebenimin kin
 kakkina mizi kegun mechchich waya-
 bandaman enowek kayataganiwangin
 ni mitonenindjiganinang, kin nichikke
 ki kikkenim eji teheyan.

Enabigis n'osse chawenimichin, was-
 seyendamadawichin ka tibikatissimagak
 nin de, kitchi kikkenindizoyan eji kik-
 kenimin. Inenimichin kitchi kakkina
 wewenint kikkenindaman nim battato-
 win ke iji kikkenindaman apitch ke pi
 mitonenimin. Kije-Manito n'osse, kin
 awachchamens wayasseyatissin kizis
 epitch wassezitch, wasseyadjitton nin
 de, wewenint kitchi kikkenindaman
 nim battatowin endassoyagak gaie
 epitch manattak, kitchi kikkeninda-
 man gaie kakkina wentji awacchamens
 manattak nim battatowin; kitchi we-
 wenint windamawak nayabichkok mek-
 katewikunayetch, ka dach win kitchi
 wij kiwanimassiwak, ka gaie nin kitchi
 wayejintizoyan. Katinakis ingi.

« Mitonenindizun dach nongum minigik ka kich pattatiyan ka nijwassweyagak kije pattatowin; mi onum: . . . Sassekawin, sasakissiwini, manatissiwini, missawenintiwin. nipatissiwini, nichkatissiwini, kittimiwin.»

« Minawatch keyabatch mitonenindizun minigik ka kich pattatiyan iki patta-inenindaman, iki patta-missawenindaman, iki patta-weyan, iki patta-totaman gaye, gaye gutch iki totanziwan minigik enenindagussin kiichi totaman.»

« Mitonenindizun gaye keyabatch minigik ka tepahigessiwan mitasswi Kije-Manito ot animitagussiwini, gaye minigik ka tipahigessiwan ka ayamieganawabaminang ka nijwatsininik ot ikitowinan . . . Mitonenindizun minigik ka pattatotawatwa pekkitjik. Akindan gaye anin endassing ki pattatowinaan kakkina endassweyagak.»



**NABOWEWIN NAYABOWENG KI ICHKWA
MITONENINDIZONG IBWA MACHI
KOPESEWING.**

Makatatch entiyani Kije-Manito Nosse! nin ka kitchi chawenimiyanban, nin ka yagwachchimidiguyanban ki kwissis o miskwi, enowek dach keyabatch ki ki kitchi nichkihini. Mi wentji animeniudaman, kije pattatowin iki wiyakichkagoyan nin gi apitchi wanitton Kije-Manito ot ayamie onichichiwin, nin gi wanitton gaye kakkina minigik ka

kachkittjikkemagakkiban ni mino inatis-
 siwiniban, nin gi wanitton wakwing daje
 minawinigussiwin achaye ka kachkitton-
 yanban ; iki kije pattatyan tanassak nin
 gi nissa ni tchitchagus, nin gi kitchi nich-
 kiha Kije-Manito ; nin gi kachkittwa-
 tisson kitchi kakikke mokkwakkizoyan
 anamakkamikong ; win ni kije pattato-
 win nin gi makkamik Kije-Manito, nin
 gi awakkanik Matchi-Manito. Missa
 ihm ka endotaguyan ni Kije-Pattato-
 win. Pattatowinins dach oki wanad-
 jihigon ej ayamieonichichippan ni tchi-
 tchagus ; pattatowinins iki wiyakichka-
 goyan, nin gi nissittamenindamiha We-
 nichichitch-Manito, ningi wanadjitta-
 mowan ottapinas nin dehing, nin gi an-
 wettawa, nin gi nissitamenindamiha
 Kije-Manito ka nisso-pejikotch, nin gi
 kachkitwatizun nakkawe mettizowining
 kitchi daje animissiyan.

Enabigis chawenimichin Kije-Manito
 tebenimin chawenimichin ki kwisis Je-
 zus ondji, pisindan eji kijwemagatinik
 ej otikkiuindjitch gaye ej otikkizitetch.

Kijikkabandamaw dach o sitan ka papa noppananapanen payattatinidjin, kijikkabandamaw gaye o nindjin nibina ka chawenimapanen gittimagissinidjin. Ki pagussenimin kijikkabandamaw gaye ki kwisis o chtikwan o minensakkanjin i zizokkwebizotch, gaye ej sagiskwagatinik o chtikwan nin ondji, kijikkabandamaw gaye o te ka kitchi sakihapanen payattatinitjin. Mi dach ke ondji chawenimin Kije-Manito ka tibenimin. Kin kwenatch Jezus ka yagwachchimiyanban, andjittawichin nin de, ejitehen kitchi iji teheyan ; songa wittokawenimichin kitchi chingenindaman pattatowin eji chinjenindaman gaye kin, kitchi sakihinan dach eji sakihigussin. Epitch songa gachkenindaman ki pi nipakwiton, pekich ej pakittenaman ka kitchi anwendizomagak nin de ki pi windamon dach nongum : oh Jezus kwenatch N'osse enigukutteheyan ni chingenindanan ni matchi aintowinan ka ondji kitchi abwezoyanbau kittikaning *des Oliviers* ka ijnikateg, ka ondji kitchi pas-

sanjeogoyanban, gaye dach ka ondji patakakehogonyanban tehipayattigong.

Gaye kin kwenatch Mani ka wabamatiban ki kwisis Jezus ka kitchi animissigubanen nin ondji, kin ka witchanimissimatibiban gaye, kin ka nittachaweningen, kin ka gaganottamawatwa payattatitjik gaganottaniawichin gaye nin nongum kitchi mino kopessewiyen, kitchi eka wanadjittoyan ihm ka kitchitwawenindagwak Sacrement-Kopessewin ka iginikateg.

Gaye kin ni kitchitwa Anjenim naningim ka wabamiyanban iki pattatichkian, witokkawenimichin wewenint kitchi pakittenindaman nim battatowin nongum wi kopessewiyen; widjihichin dach kitchi eka wikat minawatch pangichchinan pattatowining.

Kije-Manito N'osse, &c.....13.

NABOWEWIN NAYABOWENG KI ICHKWA
KOPESSEWINANIWANG.

Ki mamoyawamin Ke. Mo. N'osse ka kis iji chawenimiyen iki pisindawin minawatch nongum iki windamon nim

battatowin. Epitch kijewatissin kassa win ki kis kijikkabandanzin nim battatowin epitch manek epitch gaye manattak; mi netta ka kijikkabandaman ki kije chawenindjikewin; kakkina ni matchi ahintowinan itach tanassak anamak-kamikorg ki kis appakittonan. Ondjita ki mamoyawamin ka kis iji mino totawin, kawin wikat nin ga wanenindanzin epitch chawenimin nongum, ondjita keget nich chingenindan ni matchi ahintowin kin ondji ka ondjita onichichin, ka ondjita saki higussin, ondjita ni-gachkenindam mekka wiyen kakkina minigik ka kis nichkihinan, achaye ondjita nin gi inenindis ka minawatch nin ga tissi, witokkawenimiyan dach, minigik ke pimatissiyen kakik nin ga wi nanekatchihitis, epitchiyen kakik ki ga wi kakizomin; kwatissiyen ke ondji nipuyan kitchi wi kakizominan! Kwatissiyen nin tibinawe nimiskwing kitchi ondji kizissipattoyan kakkina ni matchi ahintowinan! Mi enenindaman nongum, Kije-Manito N'osse, epitch songa anwenindizoyan anamite: anich dach ki

ki
ep
pi
ep
wi
wi
ch
ki
we
an
pa
gu
oc
ni
ya
m
ka

M
pi
m
m
w
k
e
n

kikkenim epitch nitta pwanawitoyan, epitch chewezimagak nin de, epitch pisinatissimagak ni mitonenindjigan, epitch wibatch pangichchinan pattatowining. Enabigis dach chawenimichin witokkawenimichin kakik kitchi ochchindaman pattatowin gaye gutch kakina payawatotagemagakin, witokkawenimichin kitchi eka wikat minawatch anwettonan, kakik wewenint kitchi tipahigeyan kakkina minigik enenindagussiyan ej ayamiayan, kakik kitchi ochchindaman pattatowin; witokkawenimichin kitchi teb nanekatchichitizoyan, chawenimichin kitchi eka wikat minawatch nichkihinan, kitchi eka wikat pon-sakihinan.

Minawatch ki pagussenimin, Kije-Manito N'osse, gittimagenimichin kichpin eka ki teb mino-kopessewissiwan minawatch nongum, koni ej eka ki teb mitonenindizossiwan, koni ej eka wewenint ki windamawassiwak ka makatewikunayetch, koni gaye keyabatch ej eka ki teb anwenindizossiwan. Ketna gwetch nin ni piziskenindam, ket na

ni gachkitto kitchi gwayakwattjihitizo-
 yan, nin kakik ka nitta pachchikkwa-
 tissiyan. Enabigis dach chawenimichin,
 kawin kijikkabandanken nim bwanawit-
 towin, mi eta mikkawenindan ki kitchi
 chawenindjikewin, gaye ot animissiw-
 nan ki kwisis Jezus ninawent ondji ka
 niputch, ondjita dach chawenimichin,
 kassihamawichin minigik ka kich patta-
 tiyan. Katinakis ingi.

Chawenimichin Kije-Manito chawe-
 nimichin, &c.....84.



ANAMENSIKKE-NABOWEWIN.

Ibwa Machi Anamensikkaniwang.—
 Kije-Manito chawenimichin kitchi we-
 wenint pakittinamonan anamensikkewin

kitchi nap wewenint mannaaljibinan,
 kitchi gaye wewenint mamoyawaminan
 minigik ka mino totawim, chawenimi-
 chin kitchi anwenindizoyan kitchi ondj
 nap kassihamawiyān nim battatowin,
 ej appenimoyan ki kwissis Jezus ot ani-
 missiwin.

Ej madji anamensikaniwang.—Tebe-
 ninim ej anawi kikkenimatwa anichina-
 bek ejitēhewatch, ej anawi wayabanda-
 man gaye nin ejiteheyan, enowek itach
 ki wi windamon nongum nim battatowin.
 Ni windamawa Ke.-Mo. &c... 8.

Nogwenimichin ka kije manitowiyān,
 keget anawi nin ni kitchi pattahintint,
 anichdach awachchamenj ki kitchi cha-
 wenindjikewin kawin nitta ichkwases-
 sinon.

Kitchi guttaneninuagwat ej aping, mi
 indaje endatch Ke.-Mo; mi gaye ij ichk-
 wandemiwang wakwing: segenindan ni
 tchitchagus epitch kitchitwa mikiwami-
 wang: tibenindamoj kakkina ki mikka-
 wenindamowinan Ke.-Mo., kakkina kit
 inenindamowinan songa pakitinamaw,

mamowayam gaye ikij inenimik kitchi pindiken endatch: pagussenim kitchi otissigoyan o chawenindjikewin.—Ketchitwawenindagussitch &c.....79.

Kyrie.—Ke.-Mo. Weossiminang, chawenimichinam: Jezus ka pitch agwachimiyang, chawenimichinam: menomanitowiyang chawenimichinam, mi ket iji chawenimiang ki kije chawenindjikewining. Ki tibenindamonin ket ani ahintiyan, gaye ket ani ijimitonenindaman; kakkina nind ani ahinenindamowinan songa ki pakitinamon.

Gloria in excelsis Deo.—Anjeni nikamowin.—Ketchitwawinintj ichpeming Ke.-Mo. Wakit akkamik gaye wanakiwatch meno-tehetjik. Ki kitchitwanikamohinimin. Ki minominimin. Ki mannadjihinimin. Ki kitchitwaweniminimin. Ki nakkominimin, napitch ka kitchitwawenindagussin. Tebenimiyang Diu wakwing wekimawiyang. Diu wekossissiyang mizi ka nittawiton ka Tibenimiyang pejiko weosseyang Js. Kus. Tebenimiyang Diu ka sassakiwi-

nigon Dii ka Weossimatch. Ka kassihamawatwa payattatitjik chawenimichinam. Ka kassihamawatwa payattatitjik chawenindamittawichinam eji-pagusseniminang. O kitchiniking k'os epiyan chawenimichinam. Kin-ma nichikke ki kitchitwawenindagus. Ki pejiko tibinindan. Ki pejiko ichpenindagus Js.-Kus. Kiki winichichitch manito Dii Wekussissitch o wasseyatissiwining. Katinakisingi.

Minawatch. Kotak-Ketchitwawinintch ichpeming Ke.-Mo. wakitakkamikgayewayanakkiwatch anichinabek menoteketjik, meno inenindangik. Ayanjeniwiyeg kinawa nittam ki kis windamawawak anichinabek ikis nikigubanen Ke.-Mo. o kwisissan ikis anichinabewihitisonigubanen; ki kis mamawi papawidjiwawaban megwatch akking pimatissigubanen, kakik ki papaganawabamawaban pepa ahintogubanen, witokkawenimichinam nongum ij widjiweyang ij anamensikkaniwang, kitchi gaye ninawent eji mino-mitonenindamang eji mino mitonenindamowegubanen apitch nenekat-

chihawintibanen Jezus: gaganottama-
 wihinam kitchi songa mannadjittawang
 o kitchitwa animissiwini. Jezus Kus.
 kassihamaw kakkina o pattatominian
 anichinabek: chawenindammittawichi-
 nam eji pagusseniminang. Jezus K'os o
 kitchi-niking epiyan chawenimiehinam
 kitchi gaye ninawent kis apiyang ej apin
 apitch ke pon-pimatissiwangin.

Oremus.—Tebenimiyang, songa ki
 pagusseniminimin, gaganottamawichi-
 nam kakkina endachiyang tchi eka wi-
 kat anamakamikong animissiyang.—
 Enigukkutaheyang kit andjissigabawit-
 tonimin, mintjimenimichinam ki cha-
 wenindjikewining kitchi eka chagotchi-
 hiamintch changenimiamintch; mi iji
 chawenimichinam ka kis iji chawenimia-
 mintch Jezus Kus. ikis nipogubanen
 tchipayatikong ninawent ondji.

Oremus.—Kitchitwa Joseph, songa ot
 apenimonawa ki yow eyamiadjik kegun
 pegussenimawatjin Kije Maniton, songa
 pagussenindamawanijichchinam kitchi
 eji chawenindagussiyang eji chawenin-
 dagussiwanhanen eni-nipuwabanen;

Jezus, kaye kitchitwa Mani ki kis hi-
pukkanigok, kekuna gaye ninawent ki
iji nipukkanigoyang apitch ke ponpima-
tissiwangen.

Epitre.—Ke Mo songa nin depwetta-
mowan kakkiua enansinaikewagubanen
kitchitwa anichinabebanik ka songa
ayamiagubanenik: ka memandjich niud
anwettamowassiwananik eni inansina-
kewagubanen ayamie animittagussiwi-
ning inakkake, kin ma mega ki ma ka
wenindamonabanik eni inansinaikewa-
gubanen, mi wendji tepweyenindama-
wagwa ot animittagussiwiwan, kin ma
ki kis inanzinamawimin apittenindag-
wat, kit ani kikkinohamawimin ket ani
tiyangiban gwayak wij pi madjihitizoy-
angiban. Keguna ki iji gaehkittoyan-
ban: kekuna gaye ki iji kikkinaweni-
magwaban eji nibuakkawagubanen.

Nittam i Passikwinaniwang.—Jezus
Kus. mi ondjita kit animittagussiwi-
ka iji animittagussitch nongum ka ana-
mensikketch; ayamie—missinaigan ij

wabandang: ka ochcha win ni nissito-
 tawassiwa ij daje animittugussitch, eno-
 wek ni missawenindan kitchi pagakit-
 taman kit ikitowiniban; ki missawe-
 nindamitton eni-ikitowanbanen, echkam
 songa kitchi tepwettaman: mi wendji
 passikwiyan nongum kitchi kikkenin-
 dagussiyan songa ij tepwettaman ki kit-
 chitwa animittagussiwin gaye songa ij
 mannadjihinan. Mi wendji tchipaya-
 tikonamatizoyan nis skatikong kitchi
 eka agatchitaman ayamiewin, ni tchi-
 payatikonamatis nin doning kitchi kakik
 wewenint mino tachindaman ayamiewin,
 ni tchipayatikonamatis gaye nin deing
 kakik kitchi tepwettaman gaye tipahi-
 geyan ayamiewin. Ka memandjich
 nind anwettanzin eji kikkinohamago-
 yan. Ni missawenindamawanissak kak-
 kina anichinabek, kekuna kakkina ki
 kikkenindamowatch kit animittagussi-
 win; kekuna ki pamittokkwa: kekuna
 enigukwakkamigak ki kitchitwawini-
 gon, eji kitchitwawinigon wakwing.

Credo.—Nind depwettawa pejiko
 Div. &c.—7.

*Ka Makkatewikunayetch o Pakitinamawan Kije-
Manito Pakwejiganensan Gaie Chominabo.*

Kitchitwa nisso-pejikowin, eni inenindang ka anamensiketch, mi gaye nin eni-inenindaman; eni ikitotch mi gaye nin ket ani ikitoyanban kachkittoyanban, ki pakittinamon pakwejigan, gaye kamiskwagamik nongum ket ani ayamittaganiwang: ki pakitinamon gaye ni tchitchagus gaye ni yow; chawenimichin, apitchi kassihamawichin ni matchi ahintowin; apitchi wanenindamawichin nim battatowin: nongum ke titch pakwejigan gaye kamiskwagamik, kata appitchi anguttaganiwan; Jezus o gat owiyawinottawan pakwejigan, o gat o miskwinottan chominabo; mi gaye kakina nim battatowin apitchi iji anguttawichin; antjittawichin nin de kitchi mino-teheyan. kitchi eka kegun mayanattak akokkik nin dehing: apitchi mino tehechkawichin kitchi songa sakihinan.

Apitch Ketchi Nikamutch Ka Makkatewikunayetch.

Ki mamoyawamin, tebenimiang. ikis kijihyan; ki nakkumin ikis kassihama-

wiyan ij otchitchagoyan apitch ka-sik-
kahandagoyan; ki nakkumin ikis oni-
djanissimiyān, kaye ikis onidjanissimi-
goyan kitchitwa ningot-o-winzowin.—
Ka kegun apittenindagwassinon eji cha-
wenimin: enowek keyabatch, epitch,
gittimagissiyān, epitch pizinatissiyān,
nin gi matchi pimatchihitis, ondjita nin
gi babanatjiha ni tchitchagus iki pame-
nindaman pattatowin; chawenimichin,
ka nitta chaweningen, chawenimichin
kitchi iji anwenindizoyan eji anwenindi-
zowagubanen kitchitwa David, Ka.
Pien, Ka. Mani-Madelen gaye, keku-
na anwenindizowining ki ani pon-pi-
matissiyān; kitchi songa nanekatchi-
hitizoyan inijik ka ki nichkibinan; ni
kikkenindan, ka sesik enowek kata teb
inenindagwassinon inigik ka kich pat-
tatiyan, mi wendji achchitenindaman
nind anwenindizowin ki kwissis ot ani-
missiwining; epitch animenindamawa-
nissinoangubanen ni matchi pimatissi-
wiinan kis sagapwezonottamoguban
kinigawi miskwi kitchi nissintch, cha-
wenimichin Jezus ontji ot animissiwīn,

kitchi kisissabawatjin ij otchitcha-
goyan.

Js. Kus. ka kis pitch agwachchimi-
yang ichkuteng, ondjita nind depwet-
tan eni-ikitoyanban; ka memandjich
nind anwettanzin; nind depwettan gaye
kakkina eni iji ayamie kikkinohama-
goyan; songa nind apenimon ki chawe-
nindjikewin; chawenimichin kit ani-
missiwin ninawent ondji, wakwing kit-
chi otissabandahigoyan: kin neta ond-
jita ki niganenimin ki sakihin eniguk-
kuteheyan: ni sakihak gaye kakkina
anichinabek kin ondji, eji sakihitizo-
yan mi eji sakihagwa: ki nakkumin
inigik ka iji chawenimin, ki pakitina-
mon inigik ket ani-ahintowanen ketako
pimatissiwanen.

Ej Uchki Matowessing.—Kitchitwa-
wenindagussi***. Diu. ka tibenimi-
nang. Makkatenindagwat eji nagus-
sitch; o mannadjihigok Wakwing Anje-
niwok gaye ondaje akking anichinini-
wok.

Tebenimiyang ki kis kijittawimin kak-
kina akking endagogin: ondjita tepwe-

yenindagwat kakkina anichinabek kin
 iji pejiko mannatjihikkwa ; kin neta
 ondjita ij pejiko sakiikkwa ; kin ma
 netta ondjita ki pejiko-sakihigus ; kin
 ma kakkina kit ani ontinamawimin
 wentji ani kwayak-kwatissiyang : ki pa-
 gussenimin Jezus ontji ot ijinikazowi-
 ning, apitchi kassihan kakkina matchi
 ahintowin ka chingenindamanin ; mi
 wan gaye anamakkamik eppakinigo-
 watjin anichinabek, anawi wakwing kit-
 chi minawassiwagubanen anawi ki iji
 kijiawintwaban. Chawenim ka kije aya-
 mie ganawabaminang Jezussan ka
 mayanabichkawatch ; chawenim gaye
 ka ayamie ganawabitch genawenimia-
 mintch ; chawenim kekkinohamawia-
 mintjik kitchi ani inenindamowatch
 enenimatwa ; chawenim gaye kije ini-
 niwak genawenimiamintjik kitchi mino
 ayangwamenindizowatch, kitchi gaye
 mino ayangwamenimawatch ot uchkini-
 kimiwan : echkam kit ani pagussenimin,
 chawenim payattatitjik kitchi apitchi
 anwenindizowatch ; chawenim songa
 eyamiatjik echkam songa kitchi ayamia-

watch : chawenim gaye ondaje endana-
 kitjik kitchi wewenint debisatwawatch
 enenimatwa ; gaye dach awiyak nichke-
 nimitch kawin ningut inenimieken ;
 ningot-iji ejawatjin chawenim kitchi
 waki papamatissiwatich : songenimich-
 kaw gechkenindangik, ayakussidjik,
 gettimagissitjik gaye songenindamich-
 kaw : chawenim gaye wa pon-ipimatis-
 siwatjik Wakwing kitchi otissabanda-
 mowatch.

—
Nijin Ej-Matwessing.—Mitonenindan,
 ni tchitchagus, wewenint mitonenindan
 nongum ket ingi anamensikkaning,
 gutch ket apitch animittagussitch ena-
 mensikketch, Jezus o ga wiyawinotta-
 wan pakwejiganens ; kamiskwagamik
 Jezus o miskwi kata inini, napitch kit-
 chitwawenindagwat eji mechkuttossek ;
 epitch sakihinang mi wentji ininik ;
 ayangwamenindizun dách, ni tchitcha-
 gus.

—
*Ej-ichpiniganiwitch Kitchitwa Hosti-
 win.*—Kin Jezus nongum ka ichpinigon-
 enowek eka nagussin, enowek songa

kit indaneniminimin kitchitwa hostiwining ket ichpinigon mechchagwam i anamensikkengin : kit ikitonaban, nin gat atton ni yow kitchitwa hostiwining, gaye nin gat atton ni miskwi ayamie-minaganing, ket na ki nitta kinawichk, ket na gaye kegun ki pwanawitton, napitch inaw ka iji kijwen, mi wentji tepwettamang, minawassik ineniminam kit-ehi pejiko tepwettonang.

Ej-ichpiniganwang Kitchitwa Minagan.—Kin gaye Jezus Kitchitwa ki miskwi ka ichpiniganiwang ayamie minaganing ondjta ka wich nissigoyaban, epitch kijewatissin ka kiki chawenindizossi, awachchamenj ki ki chawenimimin, kikinawatch ki yow ki ki pakitenindan kitchi eka ichkuteng appakinigoyang, mi wentji makkatemininang kin keje-manitowiyang, ninawent dach enichinabewiyang pingwing onzam nindapittenindagussimin, ki pejiko sakihimin Jezus, minawassik eneniminam kekuna pejiko sakittoyang ej papamitto-

nang.—N'ossinan Wakwing—kit ana-
mikkun.

Ki nakkumin, kwenatch Jezus iki agwachchimiyang tchipayattigong iki nipuyanban : ki nakkumin gaye iki chawenimiyang ej anamensikkaniwang, kit inenindanaban, endasso kijigak kata uchki inenindagwat iki nissigoyanban, kakik nap kit ani agwachchimimin epitch sakihiyang : kwenatch entiyen ka kis apitchipahitizoyan, mi dach wakwing ejan, mi ma wentji songitehechkawiyang ij ayamiayang, mi ma wentji songenimoyang kitchi apitchipahiyang kipun pimatissiyang, gaye Wakwing kitchi kakikke minawassiyang.

Ktwa. Mani Ninginan, Ka. Michel, kakkina ayanjeniwieg kakkina mamawi Wakwing endanakkियeg payattatissiwiek ondjita ketchisk gwayak kwatissiyeg, nakkumawanichichinam Jezus ini-gik ka kis iji chawenimiamintch, gaye inikik keyabatch ket ani eji ani chawenimiamintch, witokkawenimichinam songa kitchi nibuakkayang, keguna ki

inenimiamintch Ke.-Mo. ka inenima-
gubanen nibina payattatinitjin songa ka
kis anwenindizowagubanen nongum
dach Wakwing menawassitjik.

Gaganottamaw Neputjik.—Jezus ka
pitch agwachchimiyang, ka nissigon,
anamakkamik ki ki pindike; ki kis awi
agwachchimak kakkina nebuakkaguba-
nenik Wakwing ij ijiwinatwa; mi gaye
iji chawenim kakkina nekkawe metti-
zotjik, awi agwachchim, Wakwing iji-
wich kakikke anwebiwining awi achchi
songa kitchi gaganottamawiamintwa.

Pater.—*N'ossinan Wakwing, &c* —
Weossiminang Wakwing ka nagussin,
kakik ki ganawenimimin, nind apitchi
gittimagissimin, ka kegun tibinawe ni
gachkitossinanan: ki pagussenimin Js.
ot ijinikazowining ondji, eji manessi-
yang ij otchitchagussiyang gaye ij owi-
yawiyang, chawenimichinam kitchi kik-
keniminang, chawenimichinam gaye
kitchi kikkenindizoyang: kikkenimi-
nang ki ga sakihinimin: kikkenindizo-
yang nin ga manenindizomin; machka-

wenindamiskawichinam kitchi songa tepwettonang ej kikkinohamagoyang, kitchi eka wikat anwettamang, kitchi eka wikat pakitenindamang ayamiewin, songa kitchi achwenindamang kitchi pamittonang. Ka-win mikawenindamawichikangen ni matchi ahintowininan, apitchi kassihamawichinam. Echkam kit ani pagussenimin, gweyak iji mitonenindjiganihichinam enenimiyang, kin néta kitchi tepahiganinang enigukkutehyang kitchi sakihinang, gaye kitchi sakihangitwa kakkina anichinabek eji sakihitizoyang kitchi iji sakihangitwa, songitehechkawichinam kakik kitchi pamittonang, kakik gaye kitchi pamitawakintwa ni kije iniminanik, kitchi eka ningut ani ijininiwakissiyang kitchi apitchi ani gwayak kwatissiyang, kitchi ani pekateuindagussiyang, kitchi gaye nittachawenindjikeyang. Chawenimichinam kakik kitchi pakitinamonang ningut eji animissiyangin. Machkawenindamihichinam kitchi eka pamenindamang anutch egoyangin, kitchi eka ningut inenindamang ningut ehi-

goyangin gaye payapinottagoyangin ;
 ayangwamenichinam kitchi eka chagot-
 chihiamintch Matchi Mo., kitchi eka
 Matchi Webihiamintwa anichinabek,
 kitchi eka gaye ninawent pattatotatizo-
 yang, kitchi eka wikat pattatiyang.—
 Achitenimichinam ki Kije Manitowiw-
 ning : ayangwamenimichinam kitchi eka
 anamakkamik apankichinang ki pon-
 pimatissiyang, Wakwing kitchi otissa-
 bandahiyang, kitchi kakike mannadji-
 hinang, kitchi gaye kitchitwawininang
 epitch kigewatissin.

Js. Kus. Ka kassihamawatwa payat-
 tatitjik chawenimichinam*.*

Js. Kus. ka kassihamawatwa pa-
 yattatitjik wanakkihichinam.

Js. Kus. ka kassihamawatwa anichi-
 nabek o matchi ahintowiniwan, ka mik-
 kawenindamawichikangen inigik ka
 nichkihingan : wanakkihichinam, ayang-
 wamenimichinam, kitchi eka awiak
 nichkihakintch : witokkawenimichinam
 kitchi eka kegun chagotchihigoyang

mi k
 Wa

A
 naye

yan
 wito

inag

Hos

ni t

kit

kite

ni

kot

yov

nar

mi

mu

aji

we

mu

kij

in

ni

jin

ki

mi ket ingi kitchi apitchi minawassiyang
Wakwing!

Apitch Kwamuniwitch Mekkatewiku-
nayetch.—Js Kus. ka kis agwachchimi-
yang, epitch mino enindaman kitchi
witeh-danakkimatwa eyamiatjik, kit
inagwayenindamawimin ki yow Ka-
Hostiwining, ki ki nawanja-venindan
ni tchitchagussinán kitchi apin, songa
kit inenimimin kitchi tipississatwayang
kitchi komuniwiyang, epitch sakihatch
ni tchitchagussinán, kawin pekininik
kotak mitjin ki kis kijittawassiwa, ki
yow eta kit achchama ni tchichagussi-
nan, songa ki mikkomimin ke ondji
minawassiwatich Wakwing menokom-
muniwitjik, ka kegun ta nondessessinon
eji chawenimiyang: nin nind indowin
wentji gittimagissiyán ke ondji eka ko-
muniwiyán; keyabatch enowek epitch
kijewatissin, nin ga chawenimik kit
inenimin; songa ki pagussenimin tebe-
ninin ningut otton ikiton, ki ga nod-
jimoha ni tchitchagus. Chawenimichin
kitchi kachkittoyan naningim kitchi wij

kommoniwiyan : mi ma apitichi nenda wenindaman epitch songa kitchi apitte-nindaman iim manito-Midjim.

Apitch Eyamittwagetch Mekkatewikunayetch.—Kitchitwa nisso-pijikowin chaye nind ani ayamittwagunan enamensikketch, eji ayamittawagubanen Js. Kus. eyamianigubanenan chaye Wakwing kitchi ijatch, keguna ki iji echowenindizoyang eji echowenindizowagubanen, kitchi iji chawenindagussiyang eji chawenindagussiwagubanen.

Kitchitwa Mani nin ginan, ka ki kikenindanzin witikentiwin, Wakwing gaye akking kit okimakwewinimigo, apitch petakkakwawanwintibanen ki kwisis Jesus tchipayattikong chaye eni niputch, nin gi chawenimigunan kitchi okiminang, mi eko chawenimatwa eyamiatjik ; mi eppahiweyang ki yow : ki pagusseniminim kin ka nitta chaweningen, pagussenindamawanissichinam kitchi iji chawenimiamintch Ke. Mo., eji pagussenimangitch.

Ke. Mo. epitch kitchitwaweninda-

gussin, tepweyenindagwat epitch gut-
tanemikwa anjeniwak: makatenindag-
wat ij eka chingenindammittawijan
nongum ka iji pagusseniminan, ij anawi
nitta pattatiyan. Ke. Mo. N'osse gitti-
magenimichin, kassihamawichin mini-
gik ka pi iji wanachkwewenindaman
nongum iki anamensikkaniwang, cha-
wenimichin kakik kitchi sakihinan, mi-
ket tingi wakwing kitchi minawassiyen.



Kaweyassam-o Ayamianiwangin.

Kije-Manito N'osse * ondjita nind anwenindis ka
kis nichkibinan i pattatiyan.

Ondjita ki kitchitwawenindagus, mi wendji chinge-
nindaman kakkina ni matchi ahintowin * awachcha-
menj kakkina ejininiwagak.

Kawin kegun nind iji chingenindansin, eji chinge-
nindaman ni matchi ahintowin * kin ondjita ka ondjita
onichichin ka ondjita sakihigussin.

Kassihamawichin enabigis * Jezus ot ijinikazowi-
ning ondjita.

Nin gi kijenindam kitchi eka minawatch pattatiyan
* witokkawenimin chawenimin ka minawatch nin gat
tissi.

Ket inenimiwanen * mi kakik ke wij tiyan.

Ketchitwawenindagussitch wekussissitch gaye we-
ossitch * gaye wenichichitch Manito.

Epitch kitchitwawenindagussigubanen gayat gaye

nongum, kakik gaye * eapitch eapitch gaye keyatatch,
 wissa kakik ket ingi.

Kije-Manito ka tibenimin * wabamichin onzam ni
 gittimagis.

Kije maneton nim battatewin * ka nitta ichkwakiat-
 jikatesinon.

Napitch ni segenint mekkawenindaman ka piteh
 ahintiyen * onzam nin gi matchi pimatis.

Awesensing nind iji pimatissinaban * Matchi Ma-
 nito weossingin nind apittenindagussinaban.

Kwatissiyen wakwing ket inabiyen * kwatissiyen
 anichinabek ke witikemagwa.

Anamakkamikong pinawigo nind da ki metus * cha-
 wenimissiwabanen.

Enowek keyabatch ki mindjimenim ki minonendji-
 ganing * ondjita ni chawenindagus.

Kije-Manito ka tibenimin * songa napitch songa
 nind anwenindis.

Gittimagenimichin kin ondjita napitch ka chawenia-
 gen * chawenimichin ki kwissis Jezus ot ijinikazowi-
 ning.

Kakkina Wakwing endanakiyeg, andjissigabawit-
 tawik Kije-Manito. * Songa kitchi gaganottama-
 wiyeg.

Tebeniminang ot ikitowin pizindamuk * animatini
 ot animittagussiwon songa pizindamuk.

Pejiko Kije-Manito ondjita ki ga mannadjihha * win
 pejiko enigukkutehen ki ga sakiha.

Ka anutch ki ga winassiwa Kije-Manito * ka kegun
 gaye anutch ki ga windansin.

Kije-Manito-Kijigak ki ga mannadjitton * mennad-
 jitaganiwangin gaye ka ningut ki gat inanokkissi.

Ki nikihigok ki ga mannadjihak * kinowenj wich
 pimatissin ondaje akking.

Nin depwettam, ondjita keget manitowi ki tchitchagussinan * ka wikat kata nipussi.

Ki nipong ki ga minonenimigonan Kije-Manito * ka pitch ahintiyang eko pimatissing.

Neputjin awiak kegichkang pattatowinens * kata nakkawe kassihakkizo mi dach Wakwing kitchi ijatch.

Eka dach kegun kegichkang * tech igutch Wakwing kata minawassi.

Chawenindagussik nakkawe mettizowining ayani-
missitjik i gaganottamawintwa * awachchamenj dach
ej anamensikkawintwa.

Pon-akkiwang ki gat apitchipamin * o kat otittan ki
tchitchagussinan ki yawinan.

Kitchi apitchi ichkwa minonenimainang Jezus Kris-
tus * Wakwing kata ijik meno-ayamiatjik.

Onzam itach kata gittimagissik ka nitta pattatitjik *
anamakkamikong kata mokwakkizok.

Kije-Manito chaweninichin * ganaweninichin apitch
ke pon pimatissian.

Ni tchitchagussan * o kitchitwawinigon Kije-Ma-
nito.

Ni mitonenindjigan gaye modjikenindamomagat *
Kije-Manitowining ka agwachchimitch.

Anawi ni nakikkawenindagus, kenowek ningi cha-
wenindam-kijikkabamik Ke.-Mo. nin enokkittawak *
mi ket ondji kakkina ket ani anichinabewitjik ningut-
tawassituk nin gat igok.

Win ma mizi ka nittawittoteh gaye ka kitchitwa-
winikazoteh * nin gi kitchi mino-totag.

Ondjita gaye nitta chaweninge, o chaweniman
gweessigutjin o nidjanissiwani * gaye ot ayanikke o
ochissiwani ket ani ayanikke o ochissiwatin.

Ki mamanda iji kachkitomagatini o nik * o ki sa-
swewebinan sessikawenindaminitjin.

Memandawizinitjin kitchi nakikkawenindagussi-

nitch o kis ineniman * mayanenindagussinitjin dach o kis kitchitwawenindagussihan.

Pekkatenedjin o kis wanatchissinihan * wayanatissinitjin dach o ki gittimagihan.

Wenitjanissingin o kis totawan Israhelan ot ayanikke ochissini * napitch songa gittimagassing o kis ineniman.

Mi ka nigan inawintwabanenak ni michchomissinaabanik * Abraham kakkina gaye o nidjanissan ochissan gaye ayanikkatch.

ANWENINDIZO-NIKAMUWIN.

Chawenimichin Kije-manito * chawenimichin kin napitch ka chaweningen.

Kin ondjita napitch ka chaweningen * kassihamawichin ni matchi ahindowin.

Ni matchi ahindowin anyantek kizissibattawichin * kassihamawichin gaye nim battatowin.

Nap-ima nim battatowin ni kikkenindan * ni matchi ahintowin gaye kakik ni wabandan,

Kin nichike ki ki nichikihin, ki kis wabam gaye iki pattatyan, * manutch enowek chawenimichin.

Kit ikitonaban, ket ayanwenindizodjik nin ga chawenimak * songa nind anwenindis mi ke ondji cheweninin.

Chawenimichin kitchi tepwettaqoyan, * ki ga chagotebihak ayanwettokgik.

Gittimagenimichin onzam ma pattatowin ni wiha-kiehkagon eko anichinabewiyan nin ga o skatang.

Enowek nin gi pattahintint, ki windamon ni matchi ahindowin * oadjita ma tepwewin ki sakiton.

Keget ondjita nin gi pattahintint * anawi ma weweniat ki kikkinohamawinaban.

Sasswebikahandawichin Tebenimin nin ga wabis * ki ga kizissibach, kwatissitch kon awachamins nin ga wabis.

Ka awia ki ga nissassiwa * ka gaye awia ki ga ehingenimassiwa.

Ka memandjich mannatissikken * manatenindamowin gaye atchitch ininan.

Ka awia kimotimiekken * ka kegun awia gaye mindjimenindamawiekken.

Kakik tepwen ningut ekitoyan * ka wikat awia ki ga kinawichkimassiwa.

Ka missawenindanken matchi witikentiwin * mi eta ayamie nipawiwin.

Ka missawenindamawiekken awia kegun endanitjin * kitchi kimotimatch.

Mi ekitogubanen tebeniminang, pamittawatch, kakik ki ga minawanigus * anwettawatch dach, kakik ki ga mokkwakis.

Pizindanda eneniminang * ka kije ayamie ganawabaminang.

Ki gat ayamiha enamensikkaniwangin Kije-Manito-Kijigak * gaye tassin mennadjitaganiwangin.

Wewenint ki ga kopessew kanage ningutin * tassin ka ningut-o-ponagakin.

Ki ga kommuniw * tassin apitchipatjin.

Ki ga mannadjittonan mannadjittaganan * ka igong kitchi mannadjitton.

Ki ga kihiguchchim ni mittana tasso kun ebwa machi apitchipatch * gaye tassin egong kitchi kihiguchchimong.

Ka mitjiken wtyas * tchipayatiko-kijigak ka gaye Mani kijigak.

Kegun nittawigiton * ki gat ayamie pakitiniken endotamowatch eyamiatjik.

Kit anamikkun Mania mwachkineskagoyan onichichiwin * ki papaganawenimik mizi ka kijittotch.

Awachchamenj epitch sakihintwa kitchikwek *
awachchamenj ki sakihigo.

Mizi gaye kitchitwawenindagussi * ki kwissis Je-
zus ka initch.

Napitch ka onichichin Mania * Diu ka okwisissi-
match.

Gaganottamawinam ketako pematissiwangen *
gaye wich nipuyang gaganottamawinam. Katinakis
ingi.

Kakkina enichiniwiyeg, kitchitwawinik Kije-Ma-
nito * kitchitwawinik, endassowinzoyeg.

Win ima pejiko, ondjita kitchitwawenindagussi *
win pejiko ondjita ki tibenimigonan.

Tebenimiyang kije gittimagissiwining ki ondji ga-
nonin * chawenindammittan eji pagusseniminan.

Kit awakang ondji chawenindam iji pizindan * ni
pagussenindjikewini animittagussiwini.

Nagatawenindamawatwaban anichinabek o matchi
pimatissiwiniwa * awenin ke kis miko inabaminagus-
sigubanen.

Tebenimiyang kit owiyawinottan chawenindjikewin
* ki tepwewini-animittagussiwini ni song apenimos-
kagon.

Ni tehitchagus ot aj enimon Ke.-Mon. ot animitta-
gussiwini * ni tehitchagus ot apenimon o gittimage-
nindjikewinini.

Wibatch patabangin nananj kitchi tibikak * apeni-
mowata Kije-Maniton o kije chawenindjikewinini.

Napitch chawenindjikewinitch Kije-Manito * ki kis
kitchinatjinehogonan ij awakaninanguban Matchi-
Manito

Eckkam songa pagussenimata Kije-Manito * kitchi
apitchi anguttamonang ki . . . echi inatissiwininan.



9. Ketchitwawisitch kakik weossimintj
 Ketchitwawisitch ka okwisissimintj
 Ketchitwawisitch gaye tetabiskutch
 Mino-Manito.

1. Kin mizi ka nittawitton
 Kin mizi ka kihijitton
 Mizi ganawenindaman
 Mizi ka tibenindaman.

2. Kin ka ontinawawiyang
 Mizi eji manessiyang
 Kin ka ganawenimiyang
 Kin netta chawenimiyang.

3. Kijik ka kijittoyanban
 Gaye tetabiskutch tibik
 Wakwi, akki dach sipiwan
 Ninawent ka y-ojittoyanban.

4. Wich kakik minotawiyang
 Mechhagwam ke ganominang
 Mizi i manessiwangin
 Wich pakitinamawiyang.

5. Tayagwatch dach mayanattak
 Ka wij chagotchihigoyang
 Songa kinahamawinam
 Kitchi atchittenindamang.

6. Mi keget ke totawiyang
 Diu ka nisso pejikon
 Wekusissin, kin weossin
 Gaye kin Meno-Man-to.



1. Ondas ijan ka kijibiyang
Kin Meno-Manitowiyang
Nansikkaw ka kijihatjik
Muchkinataw o tehiwan.

2. Ka chaweningen nanjissen
Otittan dachi ni tehinan
Kitchi minawanigoton
Ka nissitanhitotamang.

3. Kakik pintjina tibikat
Endatch ni tehitchaguchinan
Kakik wassenamawinan
Kitchi gweyak-osseyang

4. Ni sekisimin entiyang
Kinipin tehi witchihiyang
Ni wi chagotehigongan
Manito changenimiyang.

5. Kikkenindamojichehinam
Kin inakkak wekosissitch
Tetabiskutch okwissisan
Kakik kitchi tepwettonang.

6. Wekosissitch minomata
Tabiskutch inata weossitch
Gaye ka witch-manitoinatch
Pojiko manadjihata.

1. Mani Diu o kin
Kakik gaye pekich
Ka kikangowiyang
Ki minominimin.

Windaŋawiyān ki ga chawenim napitch ta minot-
tamomagaton, nittawakan * nikkānān gaye ta modji-
kenindamomagaton.

Kuchchabandan ni matchi ahindowin * kakkina ni
pattatowinan gaye kassihamawichin.

Andjittawichin nin de kitchi minoteheyan * chawe-
nimichin gaye kitchi nibuakkayan.

Ka win kwangunichiken, * eapitch eapitch ganawa-
bamichin.

Gittimāgenimichin, ni matchi ahintowin kizissibat-
tawichin, * songitehechkawichin gweyak kitchi tiyan.

Matchi anichinabek nin ga kikkinohamawak aya-
miewin, * matchi anichinabek ta anwenindizowak.

Kije-Manito ka tibenimin, ni matchi ahintowin kas-
sihamawichin, * nin denan ta modjikenindamomagat ej
ayamihayan.

Kije-Manito ka tibenimin, * tawanonichin, nin don
dach ki ga kitchitwawinigon.

Sasakiwitjigan mino-enindamanban ki ta ki sassa-
kiwinininaban, * sassakiwitjigan dach ka ki mino-
enindansin.

Mechkut ki pakitinamon nin de, * ka win manenin-
danken nin de, onzam anwenindizomagat.

Cawenim ondaje epitjik, chawenim, * nibuakkam,
Kije-Manito chawenim.

Mi apitch napitch songa nin gat ayamihamin, * mi
apitch mizi-kegun ki ga pakitinamonimin.

NIKAMUWINAN.

1. Wakwing ondjita tebissinaniwan
Ka wikat kegun ta nondessesinon
Kakikke waki dajkenaniwan
Tebissiwining.

2. Wakwing endatjik-mikkawenimatak
Ayapitch songa pagussenimatak
Echkam echkam gutch kitchi otissangwa
Wikotchitota.
-
3. Wakwing endatjik asso inawatak
Entiyang nongum mi intwagubanen
Endowatch nongum mi gweyak ke tiyang
Wieh inawangwa.
-
4. Kawin awia chawenimossiwitch
Missawatch napitch metchitwagubanen
Ondjita keget nitta chaweninge
Kije-Manito.
-
5. 'Ebeniminang ki witokkagonan
Mi wentji wentak inenindagussing
Ondjita gweyak animat kinawe
Kiwaniisiwin.
-
6. Nokwenindagwat ni ninjobizowin
Ni wiwajiwin ka kussikwansinon
Mi ma ekitotch kaginik ka tepwetch
Kossinan Jezus.
-
7. Wakwing tchi ijang kakik nagassita
Kakkina asso songa nibwakkata
Kawikat onzam pamenindansita
Akking endaguk.
-
8. Qndaje akking kit animissimin
Matchi Manito ki mikamigonan
Wakwing dach kakik ki ga nodjimomia
Wanakkiwining.

6. Jezus ka kijewatissin
Minawanigohichchinam
Ki skinjuk wabandahinan
Ke ondji minawassiyang.

7. Wakwing ke witikeminang
Nongum akking ka mawiyang
Kassipingweochchinam
Minawanigohichechinam.

1. Mania kwenatch ninginan
Gaganottamawichinam
Megwatch ij pimatissiyang
Gaye wich aninipuyang.

2. Jezus kakik sakihata
Jezus kakik nakkumata
Kakik tepahiganata
Kakik papamittawata.

Pagussanimata Jezus Kwetakitotch.

Kije-Manito,.....Chawenimichinam.
Jezus-Knist,.....Chawenimichinam.
Kije-Manito,.....Chawenimichinam.
Jezus-Knist,.....Pizindawichinam ;
Jezus-Knist,.....Chawenindamittawichinam ;
Kije-Manito Wekussissiyang Wakwing epian ;...Cha-
wenimichinam.
Kije-Manito Weossiyang Ka yagwachchimatwa anichi-
nabek ;.....Chawenimichinam.
Kije-Manito Ka Mino-manitowiyang ;
Kije-Manito Ka Nisso-pejikon ;
Jezus-Knist, Wakwing ka pi-onjiban hi wi ya-
gwachchimiayang ;
Jezus-Knist, ka inenindaman, manutch nin ga
nikihik kitchitwa Mani ka tessenakwewitch ;..

Chawenimi-
chinam.

- Jezus-Knist, awakkaning ka inabaminaaguliti-
 zonyanban epitch sakibiyang ;
 Jezus-Knist, ka chingiehchimigoyanban awezen-
 si-wissiniwaganing ;
 Jezus-Knist, ka yanawenindamawassiwatiban
 ayanwenindizogubanen *Maderen* o sipingon ; ..
 Jezus-Knist, ka nanekatehitonyanban ki yow, iki
 pakkaten, gaie iki nibakwen ;
 Jezus-Knist, ka wich kagwe-kikkenimikwapan,
 gaie ka chabbo-nanekatchiligwa Judawinini-
 wak ;
 Jezus-Knist, ka gaganottamawiyang nananj iguteh
 hi sak' abwezoyan miskwi ;
 Jezus-Knist, ka kis inenimatiban Juda, manuteh
 nin ga wayejinik, manuteh ningat odjinik ; ..
 Jezus-Knist, ka takgunigonyanban, gaie mitchi
 ka yappakinikgwapan matchi Judawininiwak ;
 Jezus-Knist, manuteh ka inenindamanban ki pik-
 kwanang kitchi takkopitek ki nintjin ;
 Jezus-Knist, ka ijiwinigonyanban, gaie ka pinieh-
 chimigonyanban enassam' apiwatch kitchitepak-
 kanike-wininiwak ;
 Jezus-Knist, ka chachikkwingweogonyanban hi
 pittikgwakunitjitagonyanban, gaie hi passano-
 webogonyanban ;
 Jezus-Knist, Mizi-mizi ka iji animissiyan ;
 Jezus-Knist, *Pinat* ka pakitinanawintiban ki yow ;
 Jezus-Knist, ka mintchiguppinigonyanban nananj
 iguteh hi sakiskwakissin ;
 Jezus-Knist, ka agwanahogonyanban chimaga-
 niehchak-okima okkwanans epitch papinot-
 tokgwa ;
 Jezus-Knist, o mininsakkanjik ka sizokkwebini-
 gonyanban ;
 Jezus-Knist, ka nondamanban ij-igon, nissik nis-
 sik, telipayattigong achchittagwauk ;

Chawenimichinam.

Chawenimichinam.

Chawenimichinam.

2. Kwenatch Mani, Wakwi
Ka nitta chenaman
Iuenimichinam
Wakwing tehi ijayang

3. Ka nodjimohiyang
Ka mijhiamintch
Nittam ikwe Eva
Chawenimichinam.

4. Nin ginan abis
Netta pattatitjik,
Wassenamaw gaye
Tebikatisitjik.

5. Miwittawichinam
Anutch ka yanimak
Pittawichinam dach
Mizi wenichiching.

6. Wabandalichinam
Ej okimik Jezus
Ki ki nikihaban
Kitchi agwachchingetch.

7. Ki sakihik Jezus
Gaye ki pamittag
Netta chawenigen
Ayamittawinam.

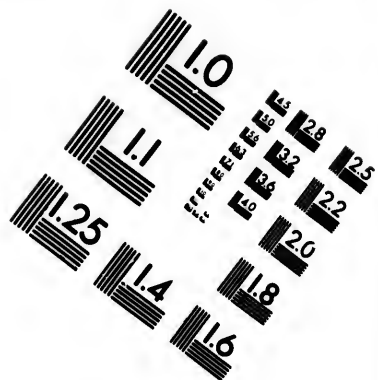
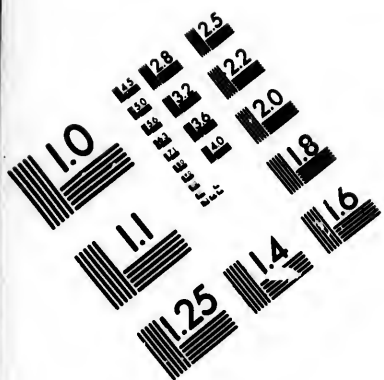
8. Ka kikangowiyan
Ka pakinawatwa
Kakkina kikangwak
I kijewatissin.

Chawenimichinam.

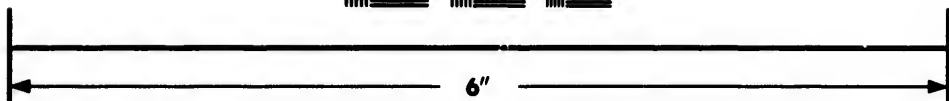
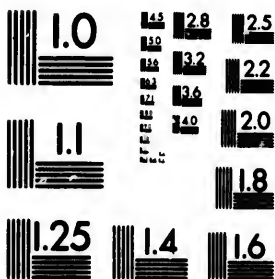
Chawenimichinam.

Chawenimichinam.





**IMAGE EVALUATION
TEST TARGET (MT-3)**



**Photographic
Sciences
Corporation**

23 WEST MAIN STREET
WEBSTER, N.Y. 14580
(716) 872-4503

1.5
1.8
2.0
2.2
2.5
2.8
3.2
3.6
4.0
4.5

10
15
20
25
30
35
40
45
50
55
60
65
70
75
80
85
90
95
100

9. Inenimichinam
Tchi pinatissiyang
Kitchi kakik wakwing
Wabamangitch Jezus.

10. Nakkumata Dir
Mizi ka kijittotch
I nisso-pejikotch
Kakik sakihata.

1. Jezus ka yagwachchimiyang
Songa ka sakihigussin
Akki hi wij minawiton
Ki kich owiyawihitis.

2. Epitch songa sakihiyang,
Mittigong ki wij nissigon
Kin gutch ki chagotchihitis
He wij kijikkamawiyang.

3. Anamakkamikong ejan
Ki tabiskunak neputjik
Ki chagotchihak manituk
Ichkuteng endanakitjik.

4. Nayagussin ki segihak
Tech ki miwihak manituk
Ki mamakatenindagus
Wakwing ej ombinitizun.

5. Kakkir ki tibenimak
Anjenik anichinabek
Kos songa ki sakihitim
O kitchi-niking epiyan.

Kitchitwa Mani ninginan,
 Ontjita kwenatch ninginan,
 Ninginan ka kitchitwawenindagussin,
 Ninginan ka makatenimigon,
 Ninginan kakina ka nittawiton,
 Ninginan napitch ka chaweningen,
 Ninginan ka minawassihyang,
 Mani napitch ka minawinagussin,
 Mani ka sakihigon,
 Mani ka kakittawenindaman,
 Mani ontjita ka nibwakkan,
 Mani kweyak ka iji mitonenindaman,
 Mani songa ka sakihatch Kije-Manito,
 Mani wakwi ka chenamawiyang,
 Mani ka wassenamawiyang,
 Mani ka chawenimatwa ayanimissitjik,
 Mani ka gaganottamawatwa payattatitjik,
 Mani ka songitehechkawatwa eyamihatjik,
 Mani ka tibenimatwa Anjeniwak,
 Mani ka tibenimatwa ki michchomissinabanik ka
 ayamiegubanenik,
 Mani ka tibenimatwa ka nigan kikkenindamogu-
 banenik,
 Mani ka tibenimatwa ka papakikkinohamagegu-
 banenik,
 Mani ka tibenimatwa ayamiewin ka ontji nanintjik,
 Mani ka tibenimatwa gweyak-entitjik,
 Mani ka tibenimatwa tissanawitjik,
 Mani ka tibenimatwa kakkina wakwing endatjik,
 Mani nind okimakweminan ondaje endanakiyang.
 Jezus ka kassihamawatwa payattatitjik,
ka ningut inenindanken ka kis pattatiyang,
 Jezus ka kassihamawatwa payattatitjik, Cha-
 wenindamittawichinam.
 Jezus ka kassihamawatwa payattatitjik, Cha-
 weninichinam.

Gag inoktamawinam.

Gaganottamawinam.

Gaganottamawinam.

Jezus, Pizindawichinam.

Jezus, Chawenindamittawichinam.

Kije-Manito, }
 Jezus-Knist, } Chawenimichinam.
 Kije-Manito, }

W.—Kitchitwa Mani Diu ka okwississimatch gaganottamawinam :

Px.—Wakwing kitchi minawas ihiyang Jezus.

Ki songeniminimin kitchitwa Mani Diu Wekussissian, ka win anwenimichikangen peguchihinang kwetakitoyang, anutch kegun wich mintjihigoyang, notjimuhichinam kin ka kichewatissin, ka onichichin.

Mania Wakwing ka okimakwewiyan minawassin ; Annenuya.

Chaye apitchipahitizo Jezus ki gwizis, Annenuya.

Mi ekitogubanen he machi nissintch, Annenuya.

Gaganottamawinam, Annenuya, Annenuya, Annenuya, Annenuya.

Ondjita songa sakihata ki ginan Mania,

Ningut entiangun mikkawenimata,

Ketako nesseng kitchitwawinata,

Kitchi sakihinang pon pattatita,

Kitchi mino-eniminang wamihata,

Ningut manesiangun pissenimata,

Ka wikat chagwenimassiwata,

Enigukkuteheng kakik ikitota,

O Mania O Mania O Mania.

Eapitch eapitch tibenimichinam.

- Jezus-Knist, apitch apitchi pwayanawitton ka kis wiwajiwihigon tchipayattik apitchi ketchi-kus-sikwanitch ;
- Jezus-Knist, ka ombakunikonyanban tchipayattigong, nissaw ej-apiwatch netta-kimotigubanenik ;
- Jezus-Knist, ka achit-taguhigatek ki nintjin gaie kis sitan tchipayattigong, gaie ka matchi-winnikkwa indaje pemussegubanenik ;
- Jezus-Knist, kis skinjkong ka win napitch ki nissitawinagussissinaban, kakkina kis pakach-kahigateban kis skinjik, tanassak wemikingin kit ijinagussinaban ;
- Jezus-Knist, ka gaganottamawatwa ka nissikgik tchipayattigong, gaie ka chawenimatch iki pagussenimik netta-kimottippan ;
- Jezus-Knist, ka ganawenindamonatch kitchitwa Jan kik gan ;
- Jezus-Knist, ka pajipahogonyanban chimagan, ka yagwachchimatwa anichinabek ki miskwiming ;
- Jezus-Knist, anamabik ka yassigonyanban ;
- Jezus-Knist, ka nissokunagak ka yapitchipahitizoyanban ;
- Jezus-Knist, ka ombiwinitizon neu-mittana ka tasso-kijigak kach apitchipahitizon ;
- Jezus-Knist, o kitchinking kos epian ;
- Jezus-Knist, ke pi minonenimatwa pematissitjik gaie neputjik ;
- Jezus-Knist, ka kassihamawatwa payattatitjik ;
Kassihamawichinam.
- Jezus-Knist, ka kassihamawatwa payattatitjik,
Chawenindamittawichinam.
- Jezus-Knist, ka kassihamawatwa payattatitjik ;
Chawenimichinam.
- Jezus-Knist, . . . Pizindawichinam.
- Jezus-Knist, . . . Chawenindamittawichinam.

Chawenimichinam.

Chawenimichinam.

Kije-Manito, }
 Jezus-Knist, } Chawenimichinam.
 Kije-Manito, }

Nossinan Wakwing Epiyan, &c.

Ayamihata.—Jezus-Knist Tebeningen, ka kis inendamanban naning kitchi pajipahogon kitchi ontji agwachchimatwa anichinabek, enabigis, inenimichinam ihim, kitchi ontji kassihamagoyang ni pattatowininanin : chawenimichinam kitchi gweyak tiyan nananj tehi nipuyang, mi dach ki nipuyang kitchi kakik wabaminang ki Manitowinagussiwining.—Ondju teliengetch Jezus-Knist pematissitch gaie epitch kakikkakanik. Katinakis ingi.

Pagussenimata Kitchitwa Mani.

- Kije-Manito, Chawenimichinam.
- Jezus, Chawenimichinam.
- Kije-Manito, Chawenimichinam.
- Jezus, Pizindawichinam.
- Jezus, Chawenindamittawichinam.
- Kije-Manito Wekussissiyen Wakwing Epiyan,
- Kije-Manito Weossiyen ka yagwachchimatwa anichininiwok,
- Kije-Manito ka Mino-manitowiyen,
- Kije-Manito ka Nisso-pejikon,
- Kitchitwa Mani. Gaganottamawinam.
- Kin Kije-Manito ka okwississimatch,
- Kin ka pakinawatwa tessanawitjik,
- Kin ij pejikon ka onitjanissin hi tessanakwewiyen,
- Kin knistus ka okwississimatch,
- Kin ka okwississimatch ka kijihatch anichininiwa,
- Kin ka okwississimatch ka agwachchimatwa anichininiwa,
- Kin ka okwississimatch pimatissiwini ka tibeningang,

Chawenimichinam. Gaganottamawinam.

	A	E	I	O	U
	A	E	I	O	U
ba,	ba	be	bi	bo	bu
pa,	pa	pe	pi	po	pu
da,	da	de	di	do	du
ta,	ta	te	ti	to	tu
ga,	ga	ge	gi	go	gu
ka,	ka	ke	ki	ko	ku
ja,	ja	je	ji	jo	ju
cha,	cha	che	chi	cho	chu
sa,	sa	se	si	so	su
za,	za	ze	zi	zo	zu
ma,	ma	me	mi	mo	mu
na,	na	ne	ni	no	nu
wa,	wa	we	wi	wo	wu
ya,	ya	ye	yi	yo	yu
ha,	ha	he	hi	ho	hu

bwa,	bwa	bwe	bwi	bwo	bwu
pwa,	pwa	pwe	pwi	pwo	pwu
dwa,	dwa	dwe	dwi	dwo	dwu
twa,	twa	twe	twi	two	twu
gwa,	gwa	gwe	gwi	gwo	gwu
kwa,	kwa	kwe	kwi	kwo	kwu
jwa,	jwa	jwe	jwi	jwo	jwu

kis in-
ni ontji
imichi-
tatowi-
nananj
ik wa-
lienin-
kikka-

inam.
Chawehimi-
chinam.

Gaganohemawinam.

<i>chwa,</i>	chwa	chwe	chwi	chwo	chwu
<i>swa,</i>	swa	swe	swi	swo	swu
<i>zwa,</i>	zwa	zwe	zwi	zwo	zwu
<i>mwa,</i>	mwa	mwe	mwi	mwo	mwu
<i>nwa,</i>	nwa	nwe	nwi	nwo	nwu
<i>tja,</i>	tja	tje	tji	tjo	tju
<i>tcha,</i>	tcha	tche	tchi	tcho	tchu

	A	E	I	O	U
<i>ab,</i>	ab	eb	ib	ob	ub
<i>ap,</i>	ap	ep	ip	op	up
<i>ad,</i>	ad	ed	id	od	ud
<i>at,</i>	at	et	it	ot	ut
<i>ag,</i>	ag	eg	ig	og	ug
<i>ak,</i>	ak	ek	ik	ok	uk
<i>aj,</i>	aj	ej	ij	oj	uj
<i>ach,</i>	ach	ech	ich	och	uch
<i>as,</i>	as	es	is	os	us
<i>az,</i>	az	ez	iz	oz	uz
<i>am,</i>	am	em	im	om	um
<i>an,</i>	an	en	in	on	un
<i>aw,</i>	aw	ew	iw	ow	uw
<i>ay,</i>	ay	ey	iy	oy	uy

atch, atch etch itch otch utch

atj, atj etj itj otj utj

antch, antch entch intch ontch untch

antj antj entj intj ontj untj

anj, anj enj inj onj unj

ang, ang eng ing ong ung

ans, ans ens ins ons uns

achk, achk echk ichk ochk uchk

- 1.—Pejik,
- 2.—Nij,
- 3.—Nissowi,
- 4.—Neu,
- 5.—Nanan,
- 6.—Ningutoasso,
- 7.—Nijoasso,
- 8.—Nichwasso,
- 9.—Changasso,
- 10.—Mitasso,
- 11.—Mitasso achitch pejik,
- 12.—Mitasso achitch nij,
- 13.—Mitasso achitch nissowi,
- 20.—Nichtana,
- 30.—Nissomittana,
- 40.—Neu-mittana,
- 50.—Nano-mittana,
- 60.—Ningutoasso-mittana,
- 70.—Nijoasso-mittana,
- 80.—Nichwasso-mittana,
- 90.—Changasso-mittana,
- 100.—Mitasso-mittana.

ACHAYE.

i,

