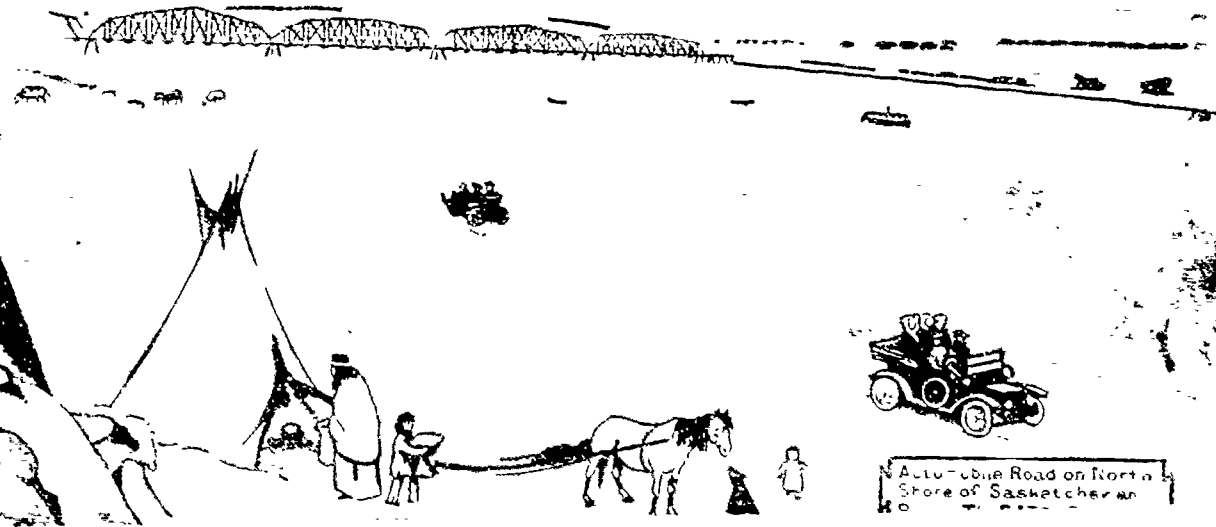


# BATTLEFORD



Auto-bus Road on North  
Shore of Saskatchewan



TWO HOURS SPENT BEFORE BREAKFAST, 7 MILES FROM BATTLEFORD

*From Miller's  
File*

*10 AA.*

A PLAINLY TOLD STORY OF THE TOWN OF

# BATTLEFORD

SASKATCHEWAN

A Fast Coming Industrial City With a Great Future that Opens Wide the  
Gate of Opportunity

NWp  
972.14  
B336P

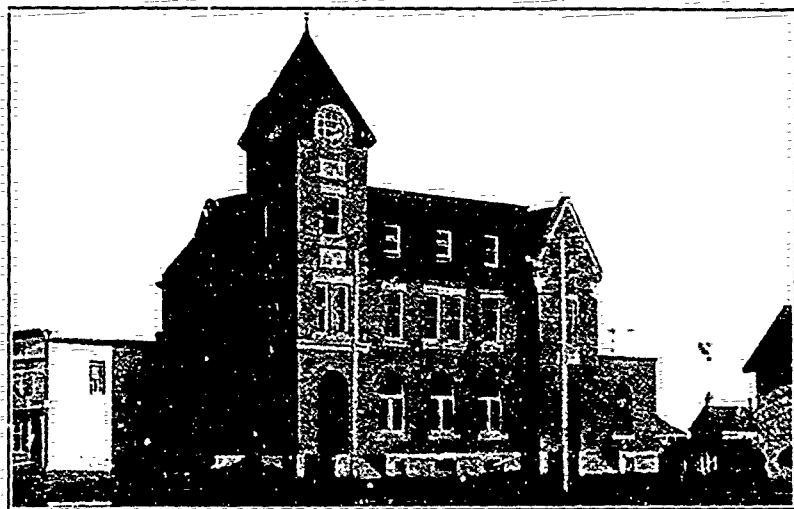
On the junction and between those two lordly rivers  
the Saskatchewan and Battle Rivers, there  
is a Great City, a Most Beautiful  
City growing

# BATTLEFORD

has enjoyed progress and prosperity during the past year not equaled by any other corner of the Canadian West. It is impossible in a brief brochure of this nature to cover all questions that may be asked, but it is hoped that the limited contents of this booklet will be of service to visitors and persons interested in Battleford. Its history, geographical position and many other features and natural advantages, the unbounded wealth of the adjacent agricultural sections, the increasing prosperity constitute so many advantages that they would be very difficult to enumerate.

That such favorable conditions and circumstances exist is proven by the visible progress in every department of our commercial and agricultural interests.

EHRlich  
\$ 50.00  
NOV 2 '67



BATTLEFORD'S HANDSOME NEW POST OFFICE

No Town in the Prairie Provinces of Canada has  
brighter prospects than

## BATTLEFORD

The conditions governing Battleford's prosperity are daily increasing in number and influence. The keystone of Battleford's present commercial activity and solid foundation was laid when Canada's great transcontinental line The Grand Trunk Pacific decided to tap this beautiful centre with three most important lines, namely Biggar-Battleford line, Battleford-Saskatoon line and the Battleford-Tosfield-Edmonton line, some of which lines will be in operation by the first of September next (see Transportation Facilities on page 9). The Canadian Pacific Railway are not slow to grasp the situation as to Battleford immediately becoming a great railway centre and are therefore building from Asquith into this centre. The Canadian Northern Railway are further recognizing Battleford's importance and wonderful resources and desiring to be able to increase this company's business and retain a fair share of the developing traffic, will construct a line in the very near future now known as the Battleford-Kindersley-Medicine Hat-Calgary line, and for which line Charters are granted and much right of way is already approved. These various lines with those radiating to the north are the making of the Town of Battleford as one of the most important railway centres in Western Canada, enjoying as this Town will in the immediate future, transportation facilities by rail and water that will surely make her a mighty active rival of the largest Cities in the Canadian West.

Battleford's greatness is assured, and the Citizens—British and American—have firm confidence in its future prosperity and in its industrial and social progress.



COURT HOUSE

Battleford a Judicial Centre with a Resident Judge

500328

NWp  
972.14  
B336P

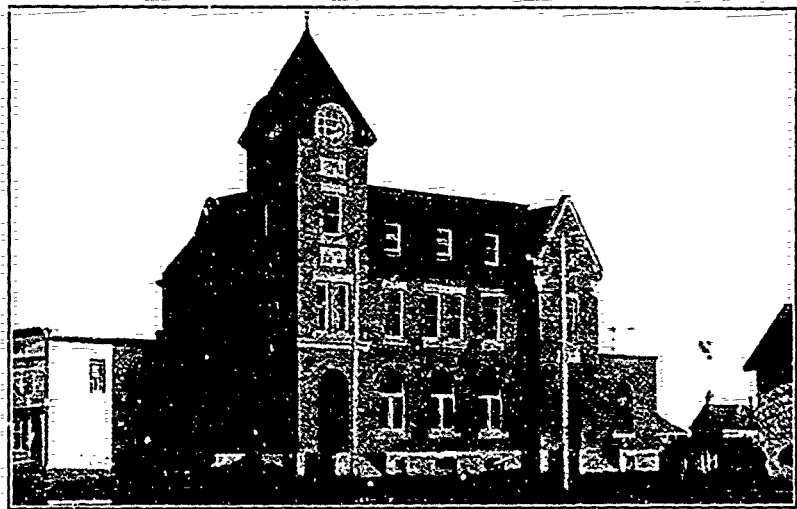
On the junction and between those two lordly rivers  
the Saskatchewan and Battle Rivers, there  
is a Great City, a Most Beautiful  
City growing

# BATTLEFORD

has enjoyed progress and prosperity during the past year not equalled by any other coming City of the Canadian West. It is impossible in a brief brochure of this nature to cover all questions that may be asked, but it is hoped that the limited contents of this booklet will be of service to visitors and persons interested in Battleford. Its history, geographical position and many other features and natural advantages, the unbounded wealth of the adjacent agricultural sections, the increasing prosperity constitute so many advantages that they would be very difficult to enumerate.

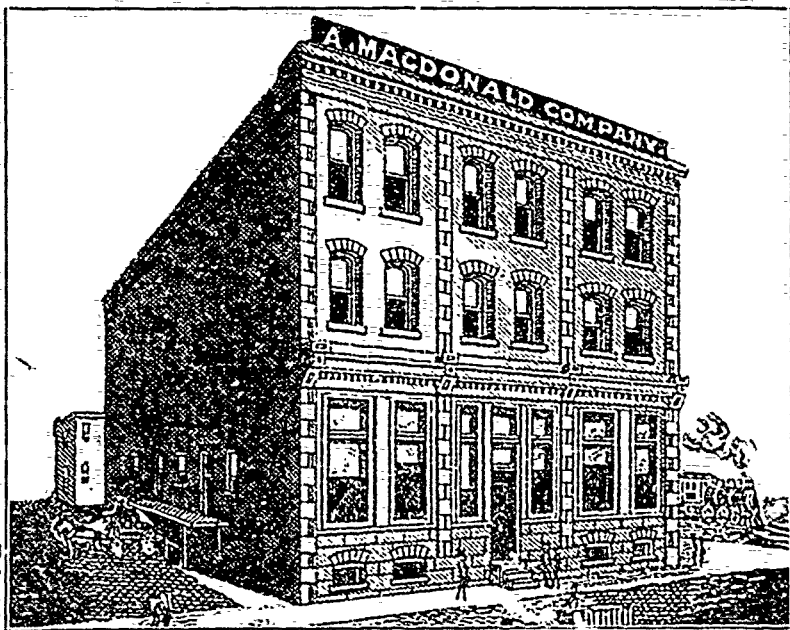
That such favorable conditions and circumstances exist is proven by the visible progress in every department of our commercial and agricultural interests.

EHRlich  
# 50.00  
NOV 2 '67



BATTLEFORD'S HANDSOME NEW POST OFFICE

A most unique, genuine financial municipal situation. For investment in stock; or loans at a low rate of interest, and the general promotion and securing of industries for the Town of Battleford not near equalled by any city or town in the whole Dominion of Canada. Not a private subscription fund, not a citizen's incorporated company fund, but a strong substantial municipal trust fund, carrying with it other important and valuable municipal concessions such as valuable free sites, exemption from taxes, electric current for power and light at actual cost of producing by the municipality. Water on same basis.



The A. Macdonald Co. Limited Wholesale House now under construction.



1. SEWERAGE CONSTRUCTION - BATTLEFORD  
2. SCENE ON 22ND STREET - BATTLEFORD

# BATTLEFORD

THE TOWN WITH THE JUDICIAL CENTRE LANDS  
HOTEL CENTRE HEADQUARTERS R. N. W. M. P.  
HEAD OFFICE DOMINION LANDS INDIAN  
OFFICES METEOROLOGICAL  
OBSERVATORY

Battleford - the most beautiful City Site in Western Canada  
stands out with undisputed prominence as possessing all and every  
feature essential to the success of

THE WHOLESALER  
THE MANUFACTURER  
THE GENERAL DISTRIBUTOR  
THE INVESTOR

Investigation will bring out all the above facts. Your opportunity is within your grasp now, as Battleford today presents a most rare chance, and a highly promising field.

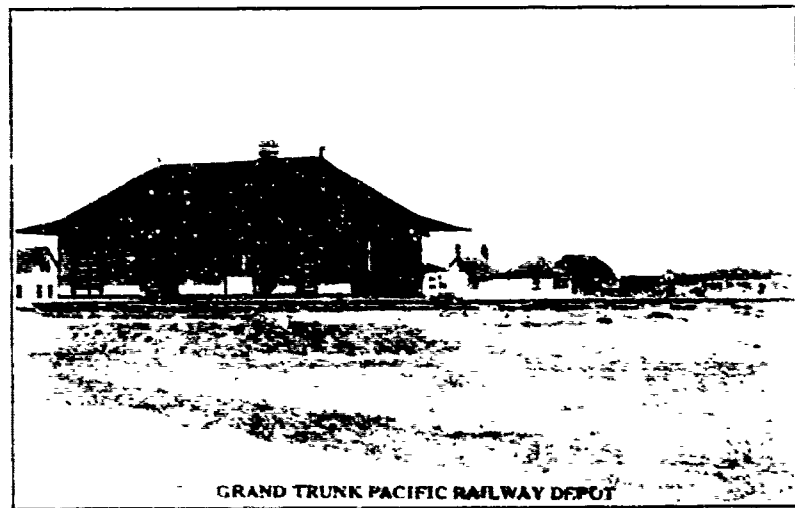




SCENES IN AND AROUND BATTLEFORD



CANADIAN NORTHERN RAILWAY DEPOT



GRAND TRUNK PACIFIC RAILWAY DEPOT

## BATTLEFORD—ITS TRANSPORTATION FACILITIES AND RAILWAY FACTS

Battleford is just at present served by the Canadian Northern Railway and in addition to this connection with the main line of the Canadian Northern communication is afforded with the great north country by means of a Canadian Northern line to Peace River country partly completed and a line of the same system to Prince Albert now under construction and ready for steel. The Grand Trunk Pacific Battleford-Biggar line is about completed and will be open for traffic by September first. The Grand Trunk Pacific Battleford Tokefield and Edmonton line is being constructed with all possible speed, upwards of 70 miles west from Battleford will be operated in time to take care of this season's crop. The Grand Trunk Pacific Battleford-Saskatoon line is being rapidly advanced. Charters for this line are granted and bonds guaranteed and it is officially announced that upwards of 60 miles of this important line will be in operation before the close of the present year.

The Canadian Pacific Railway has secured charters to build from Asquith into Battleford, and a portion of this line is already constructed. Charters have also been granted for the extension of this system from Outlook to Asquith, thus serving Battleford with a direct line from Moose Jaw, placing Battleford with good connections at Asquith east to Saskatoon, and all the important Towns and centres south and south-east and also that southern country west to Edmonton. Early completion of this line into Battleford is promised.

Another most important line is the Canadian Northern Battleford-Kinderhook Medicine Hat-Calgary line. Charters are granted for this line, bonds guaranteed and much right of way already approved. This being a very important addition to the Canadian Northern

system is undoubtedly assured of early completion as possible, thus giving the Canadian Northern a direct line from Calgary and points named to Battleford, Prince Albert and the great Hudson's Bay route.

Thus it is clearly noted that Battleford's true railway situation to-day shows this progressive Town as now served by three lines of the Canadian Northern Railway. The Grand Trunk Pacific Battleford-Biggar line just ready for operation and the four other lines as set forth above gives Battleford eight lines of railway operated by all three of the Great Transcontinental lines, thus giving Battleford transportation facilities all that can be desired.

### OF VAST IMPORTANCE TO BATTLEFORD IS HER COMING WATER TRANSPORTATION

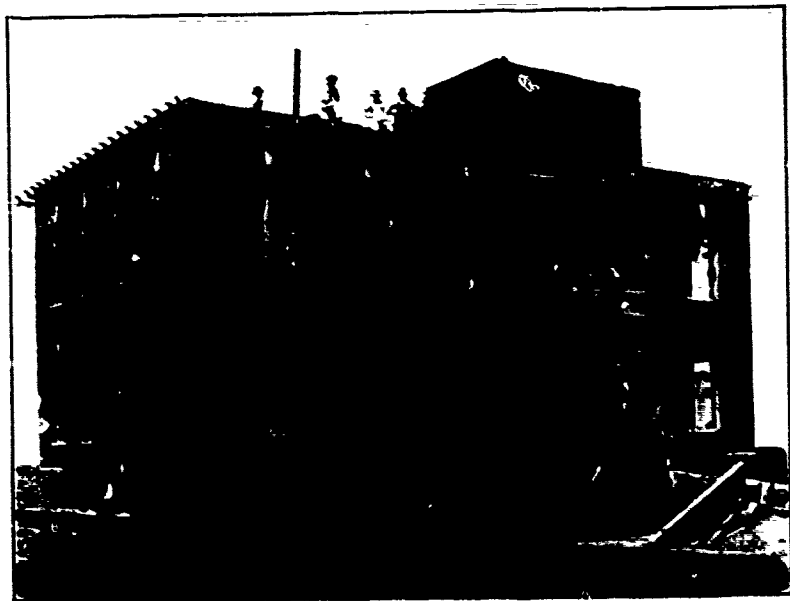
All recent Engineers reports prove conclusively that the matter of making the Saskatchewan River navigable from Edmonton to Prince Albert is assured. You will note that Battleford is the only town situated on the water front on this great artery of commerce and taking into consideration that Battleford is the only point between Edmonton and Prince Albert where railways will touch this wonderful water front it must certainly convince the reader of the important commercial position Battleford is placed in respect to this great highway of commerce.

It now only remains to speak of this natural artery of transportation on which it is now possible to navigate far-sized steamers as being made perfectly navigable from Edmonton to Winnipeg.



ST VITAL SCHOOL

It is a fact that we are growing and prospering in all directions. The people are anxious to give their children to a first class education. The people of this section are anxious to see the High School completed. The Catholics of Pateford are anxious to see their school completed. The Protestants of Pateford are anxious to see their school completed. The St. Vital School is a fine example of what can be done and are trying to do a successful school in Pateford, the most favored educational centre in the area. We are anxious to see it completed and are trying to do a successful school in Pateford, the most favored educational centre in the area. We are anxious to see it completed and are trying to do a successful school in Pateford, the most favored educational centre in the area.

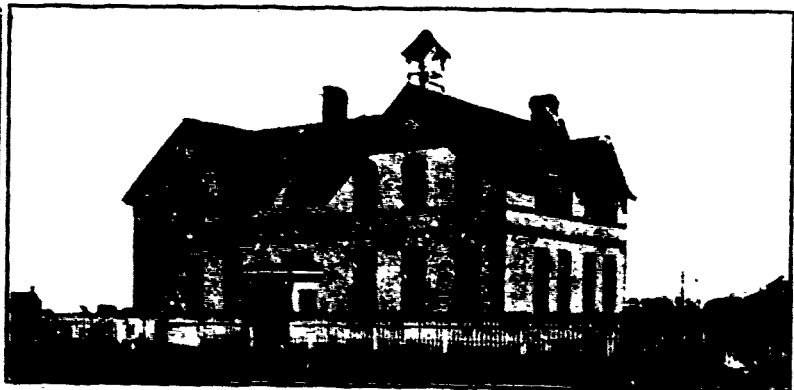


NEW HIGH SCHOOL Under Construction



**INDIAN INDUSTRIAL SCHOOL**

Few towns in America are so ideally situated from an hygienic standpoint, and certainly none between the Great Lakes and the Rocky Mountains can compare with Battleford in point of beauty. The Indian Industrial School, under the able management of Rev. E. K. Matheson, is proving a mighty educational factor, and can justly claim a place among the best in the Province. There is at present an energetic move towards securing



**PROTESTANT PUBLIC SCHOOL**

the location in Battleford of a Catholic boarding college and the assurance is now given that an institution of this nature and of no small proportions will be located here in the near future.

The above description of our school system will undoubtedly impress upon the mind of every one viewing Battleford possessing the greatest possible educational opportunities.

## Some of Battleford's



METHODIST CHURCH

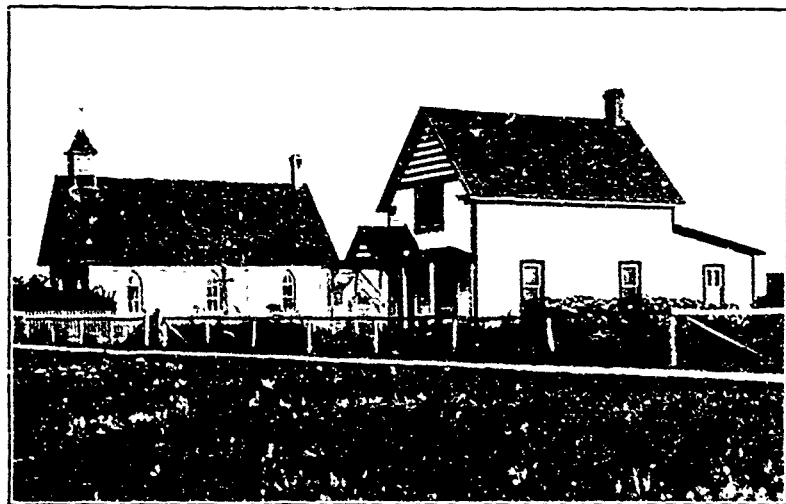


ROMAN CATHOLIC CHURCH

## Religious Institutions



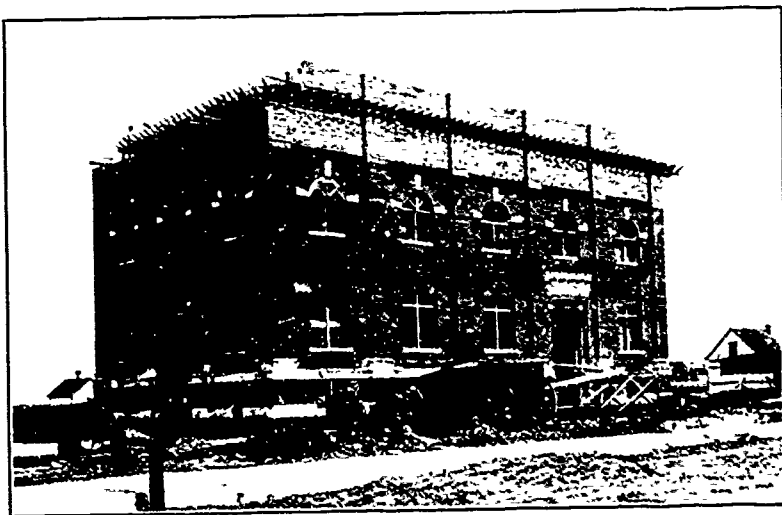
ST. GEORGE'S Church of England



PRESBYTERIAN CHURCH



1 MILE'S GRANOLITHIC WALKS Under Construction



CITY HALL AND OPERA HOUSE Under Construction



# Battleford's Civic Improvements

Battleford's development during the past year has placed the fact of this Town becoming a City and a great industrial and distributing centre beyond the boundary of experiment, and Civic improvements of a heavy nature are the order of the day. Those under construction at the present time creating an expenditure in excess of \$275,000.00 being

**WATERWORKS AND SEWERAGE  
NEW CITY HALL AND OPERA HOUSE  
GRANOLITHIC WALKS  
NEW HIGH SCHOOL**

And in addition to these mentioned and for which contracts for construction are closed and let are

**NEW POWER HOUSE  
RESERVOIR  
SEWAGE DISPOSAL WORKS  
NEW FIRE HALL**

All of which show conclusively that

**BATTLEFORD IS NOT EXPLOITING, BUT DEVELOPING.**



**CONSTRUCTING WATER WORKS AND SEWERAGE**



**BANK OF BRITISH NORTH AMERICA**



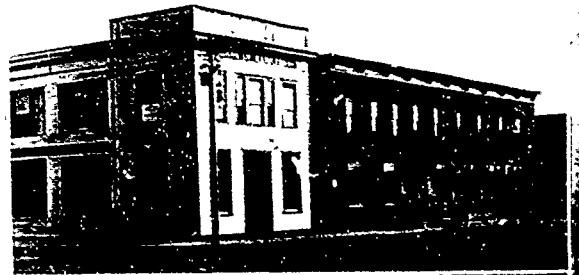
**MERCHANTS BANK OF CANADA**

**THREE CHARTERED BANKS**

are at present handling the rapidly growing commercial business of Battleford.

The Bank of British North America  
The Bank of Hamilton  
The Merchants Bank of Canada

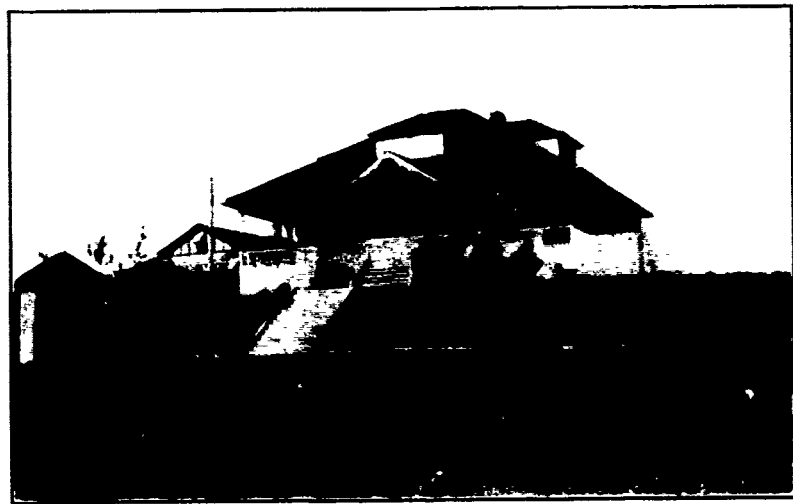
and others are seeking entrance to share and assist in the wonderful development that is **MAKING BATTLEFORD FAMOUS.**



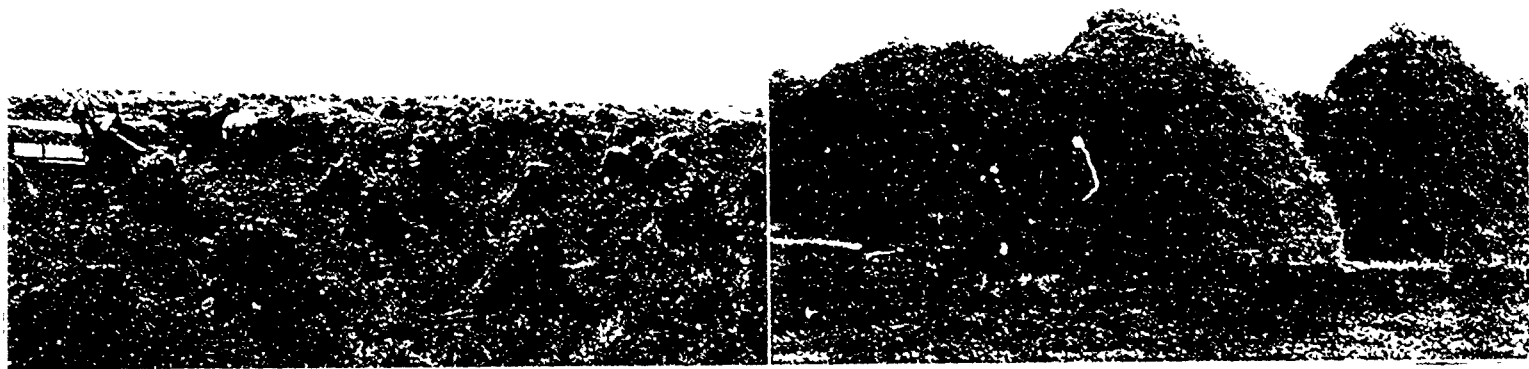
**BANK OF HAMILTON**

# REAL ESTATE

Battleford real estate has this advantage as compared with values elsewhere in the West, it has not been inflated to a point infinitely beyond its value by the arts of the professional "boomer". Property well within the city limits, suitable either for commercial or residential purposes, may be obtained at moderate prices, and much business in this class of realty has been done during the present year. The town is not only growing to the west, but also to the south and east, and there are excellent opportunities for investments promising substantial returns in the immediate future. On the main business thoroughfares the prices asked for business sites are quite in harmony with present actual values, but beyond doubt there will be a judicious increase in the immediate future. Facilities for warehouse and manufacturing sites excellent, and are close in, and in many instances within three blocks from the Post Office. No point in the West to-day affords more substantial opportunities for an outlay so moderate as that of the Town of Battleford. With a keen eye to the certainty of future development, capital from East and West may well pause before it passes Battleford.



A TYPICAL RESIDENCE



2 Miles from Battlford BATTLEFORD FARMING DISTRICT 3,500 Bushels of Wheat Waiting for the Thresher

# BATTLEFORD'S FARMING DISTRICT

Where Every Prospect Pleases; Where Good Soil and Favorable Weather Conditions Combine to Produce an Uninterrupted Succession of Good Crops

Much has been written and much has been said concerning the advantages of many farming districts in Western Canada, but the Battleford district stands out in undisputed prominence as an ideal district with its thousands of acres of fine farming land, offers wonderful opportunities to the farmer who is seeking a new home. A grand park-like country, beautifully dotted with groves and luxuriant meadows, and which is pre-eminently suited for both wheat raising and mixed farming. The land in the Battleford district is like the land of the Middle Western States: it is fertile, not merely because for uncounted centuries it has lain untilled, but because when Nature deposited the surface soil on a foundation of clay, she collected just the ingredients that insure rapid growth to farm crops, and the best defense against their natural enemies.

The winters in the Battleford district are milder than in most parts of the West: snow seldom if ever exceeds seven inches, good sleighing usually prevails during the entire winter. The summers are perfectly delightful and not excessively hot, whilst the temperature may reach 90 and 95 degrees during a short period of the day, the atmosphere is dry and the nights are invariably cool.

The snow blizzards of winter and the dust storms of summer, not infrequent in many parts of the Canadian West, are never experienced here, owing to the protection of the

Eagle range of hills. The beautiful park country and the two lordly rivers, the Saskatchewan and Battle, no doubt largely accounts for the absence of bad storms either in the winter or summer, as such are practically unknown in the Battleford district.

In mixed farming, poultry raising, market gardening and the growing of all kinds of vegetables it is our proud boast that Battleford stands absolutely unapproached in the Province of Saskatchewan.

Come and bring your cows with you, is the hospitable invitation from Battleford as no other district in Western Canada has more natural adaptability for dairying. With the local consumption exceeding the output at a ratio of five to one and with natural conditions perfect there is every encouragement here for the dairy farmer, the expert butter maker and the small farmer who keeps six or eight good milk cows.

Pure drinking water in abundance and easily obtained in every part of our district is one of the important features where we outclass practically all other districts in the whole Canadian Middle West. This is a matter of the greatest importance. Pure domestic water from wells 9 to 15 feet, inexhaustible for all purposes is the chief characteristic of the Battleford farming district.



THRESHING NEAR BATTLEFORD

## No such panorama of Beauty and

---

---

Good farming land can be purchased on reasonable terms within the radius of 4 to 16 miles from the Town of Battleford from \$12.00 to \$16.00 per acre close to inexhaustible markets for produce of all kinds, in a complete network of railways where land values will undoubtedly double within the next two years, therefore we appeal to the farmer in all sincere earnestness why why in the world go to any far part of the interior seeking and purchasing farm lands, when the above conditions to-day exist right in the very heart of civilization, right in the heart of markets, transportation, schools, churches and where modern conveniences already prevail. In no district in the whole three Prairie Provinces do similar conditions exist to-day, where you can purchase magnificent farming land right up against railways, markets and a beautiful Town at the cheap price stated and on such excellent terms.

---

---

## No such panorama of Beauty and

## Magnificence can be found elsewhere

---

---

Under the present price of farm lands, the liberal terms, the farming lands immediately surrounding the progressive Town of Battleford will be settled up in a very short time. This means an early advance in land values. **MAKE YOUR START NOW**, and soon you will rank among the independently wealthy people of the beautiful Town of Battleford and its magnificent farming district. Battleford has the conditions, the land, the easy price, the transportation facilities, the markets, that makes success certain. This great advantage coupled with ample rains in the spring or growing season, followed by long periods of delightful sunshine, with cool nights, with frosts unknown during growing season and absolute absence of the dreaded hail storms, are the chief and important features we present to the prospective farmer and investor. On the whole it might be said without the slightest exaggeration that the Battleford farming district is the most delightful, richest and absolutely the most safe in the whole West.

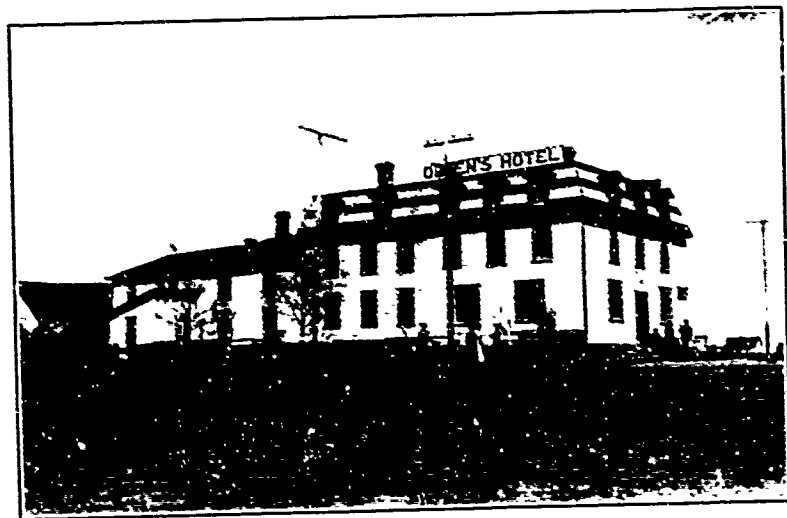
---

---

## Magnificence can be found elsewhere



WAITING FOR LAND AT ENTRANCE TO DOMINION LAND OFFICE.



QUEEN'S HOTEL



KING GEORGE HOTEL



# BATTLEFORD

is pleased to call your attention to the excellent hotel  
accommodation

THAT AWAITS YOUR COMING

The illustrations shown give but a faint idea of these splendid Hotels, all of which  
are centrally located, most comfortable, elegantly furnished, most modern rates and  
enjoying the noted prominence as being the best Hotels between Saskatoon and Ed-  
monton

BATTLEFORD'S HOTELS ARE HIGHLY ENDORSED  
BY TRAVELLERS THROUGHOUT ALL  
THREE OF THE PRAIRIE  
PROVINCES



WINDSOR HOTEL

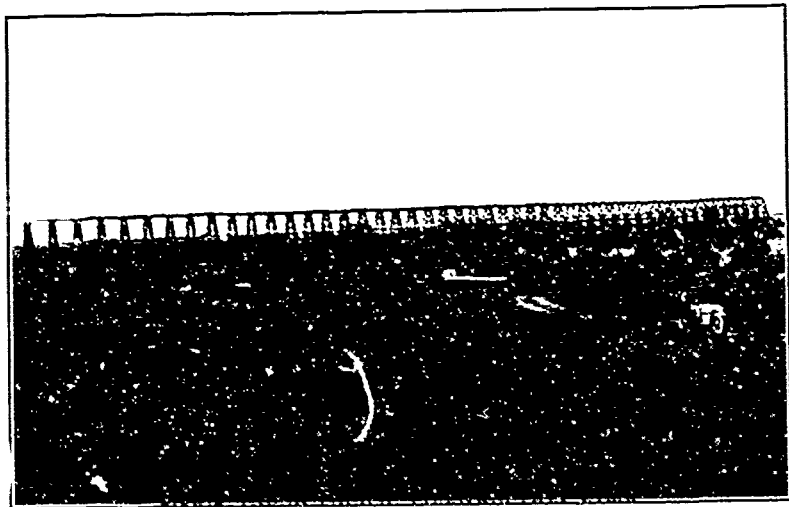
BATTLEFORD IS PROUD OF HER BEAUTIFUL SUMMER RESORTS



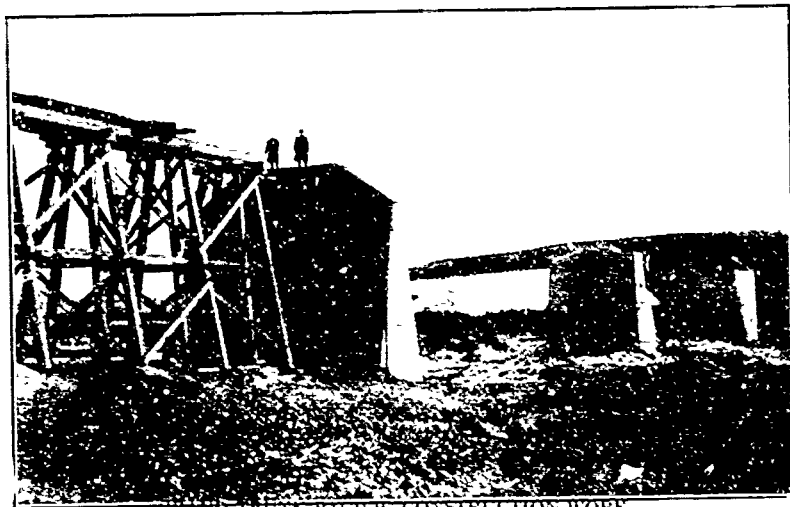
The natural beauty and easy accessibility of the above lakes have made them most popular resorts for the large colony of summer residents who have erected tents and a number of picturesque cottages. These lakes with their sand beaches which gently lead their way into the soft clear water that the children may bathe in safely and happily afford with equal safety convenience and beauty of every description.



THE EIGHT MILE LAKE AND THE THIRTEEN MILE LAKE ARE EASILY THE CHIEF CHARM

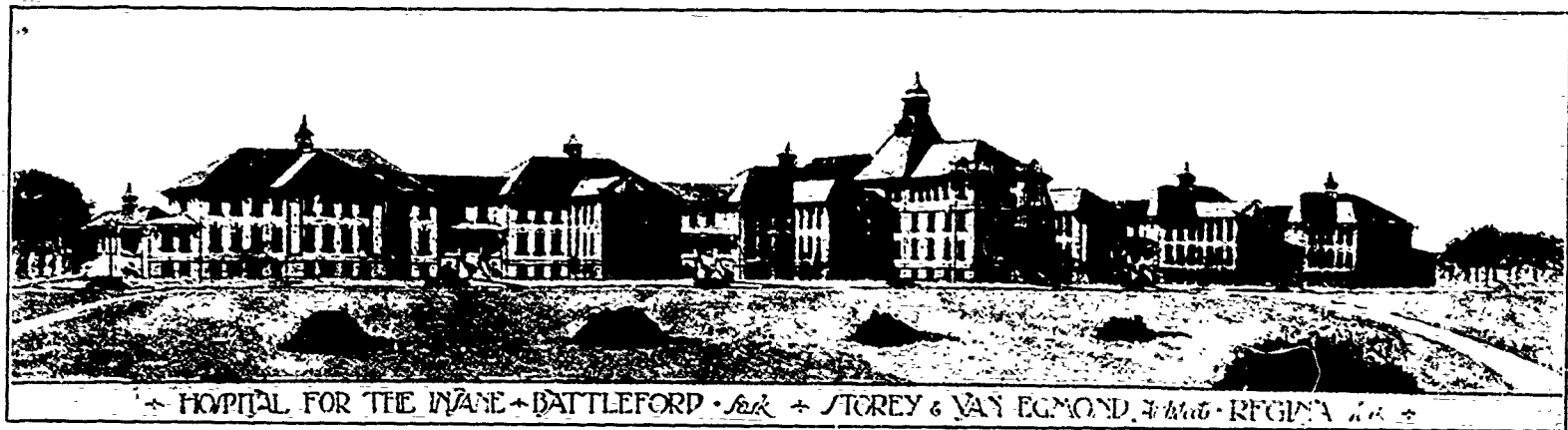


BATTLEFORD-BIGGAR LINE

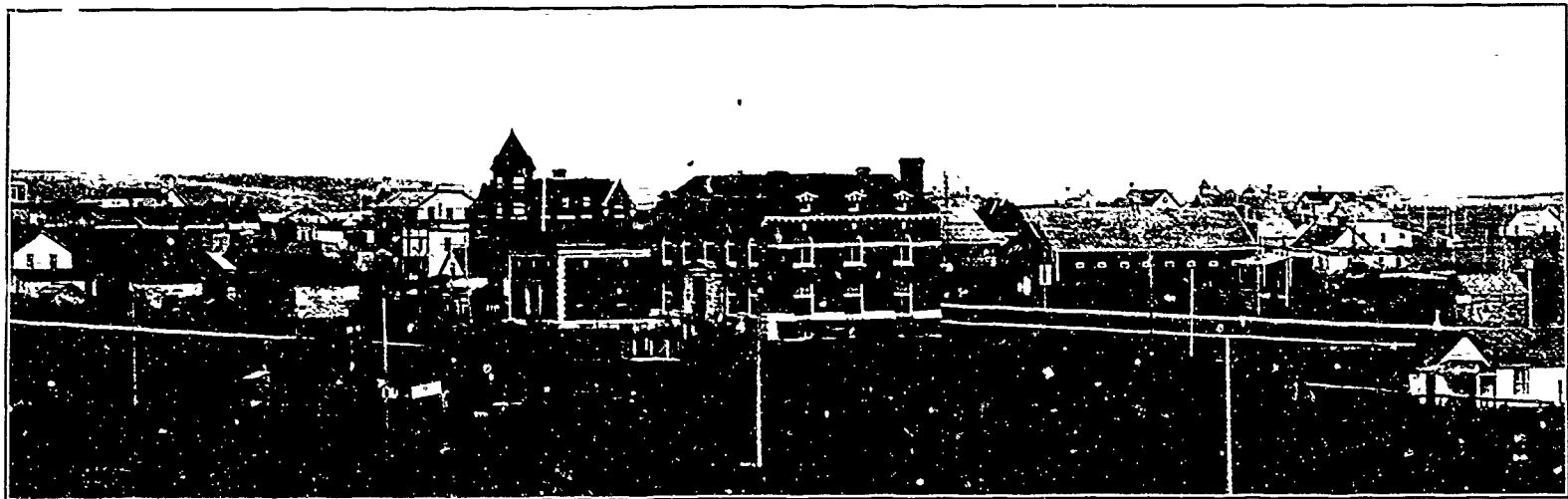


GRAND TRUNK PACIFIC CONSTRUCTION WORK  
BATTLEFORD-EDMONTION LINE

5003.8



THE PROVINCIAL ASYLUM BATTLEFORD



WEST 2ND AVENUE SHOWING COURT HOUSE, LAND TITLES OFFICE AND POST OFFICE

## Battleford's Wholesale and Industrial Activity

THE A. MACDONALD COMPANY LIMITED, Wholesale Grocers, have under construction a most modern wholesale house (see page 5) and many other prominent firms are seeking entrance into this Town in order to become established slightly in advance of Battleford's excellent transportation facilities just at hand.

THE EBY FOUNDRY COMPANY have selected Battleford for their plant and have now under construction a most up-to-date foundry and moulding plant.

THE BATTLEFORD IRON WORKS COMPANY'S Plant is now completed and has started operation with one of the best machine shops in the Province.

THE BATTLEFORD STEAM LAUNDRY has developed a large business and is now employing a large number of hands.

THE BATTLEFORD MUNICIPAL FLOUR MILLS are running to full capacity giving employment to a number of hands.

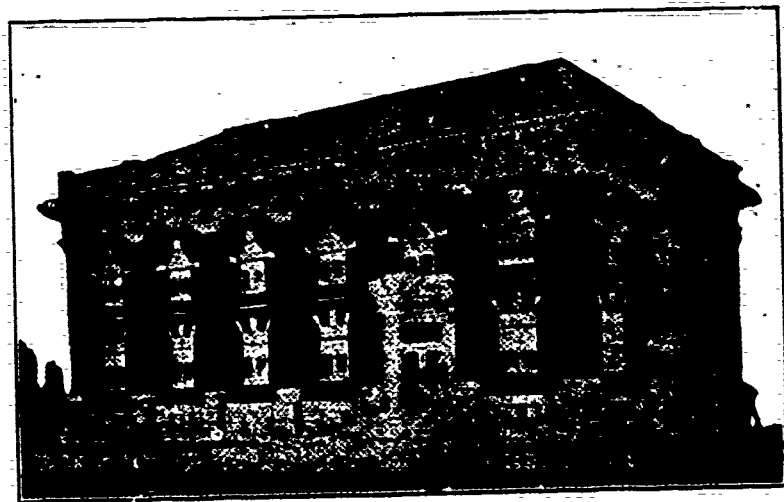
THE BATTLEFORD PLANING MILL COMPANY are constructing a large plant with a full line of machinery for the manufacture of sash, doors and all kinds of interior wood-work.

THE LOBB & CLARK BRICK AND TILE MANUFACTURING COMPANY are putting in a large plant for the manufacture of cement sand brick, tile and cement block.

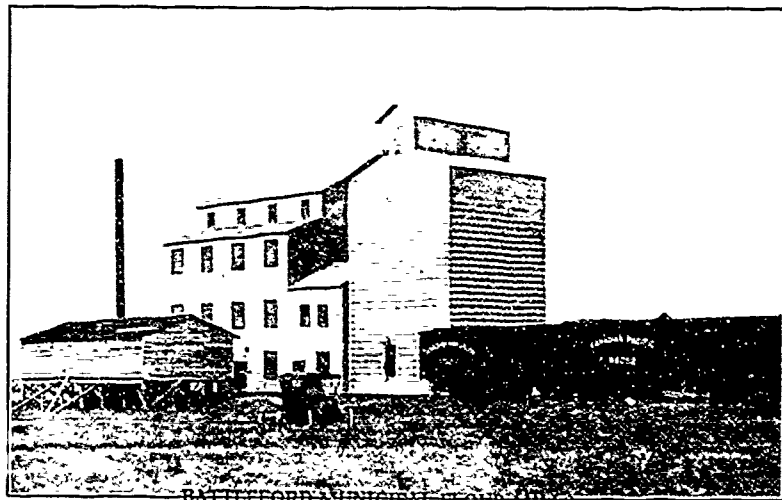
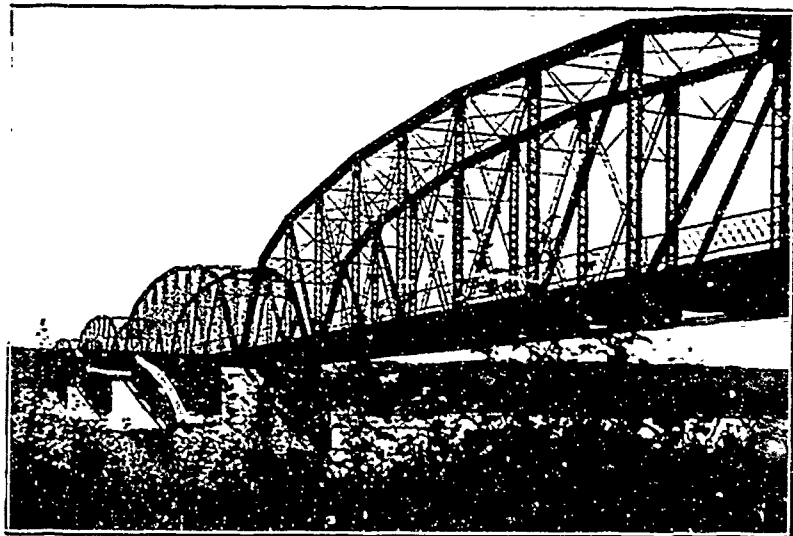
The above prominent firms together with a number of important companies under consideration, proclaim the faith of the people in the commercial importance of Battleford.

Battleford's steady stride in all directions is a movement of permanent progress. Industrial development though only in its infancy has indeed been rapid during the past three months, and everything points to a much greater development before the close of the season, as each succeeding month is making a new record of achievement.

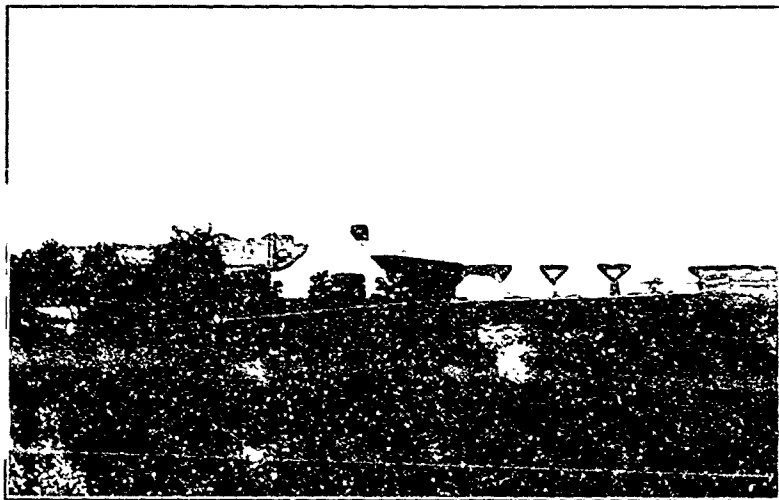
BATTLEFORD exhibits a steady irresistible movement which affords the best possible proof of this Town's permanence and stability.



CITY HALL AND OPERA HOUSE



BATTLEFORD MUNICIPAL FLOUR MILLS

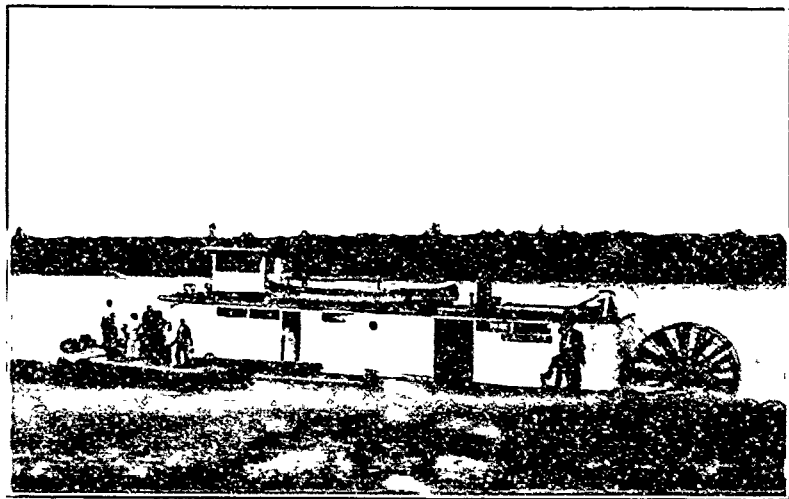
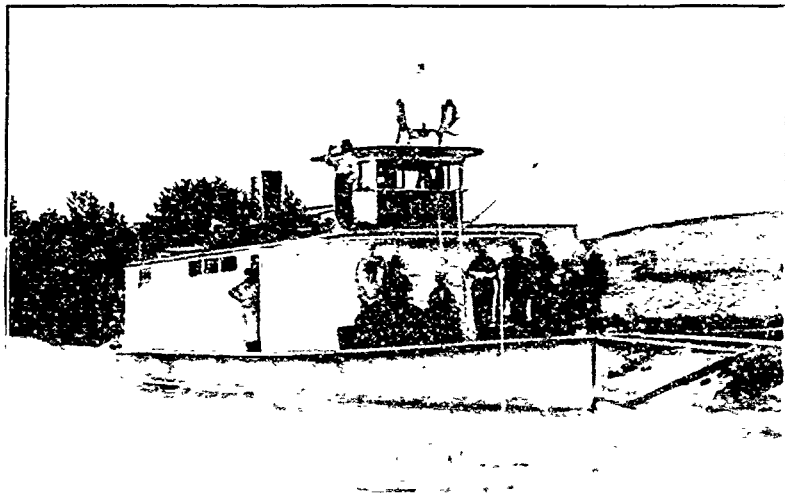


CAMPING ON THE SASKATCHEWAN RIVER



BOATING ON THE SASKATCHEWAN





HOUSE BOAT ON THE SASKATCHEWAN

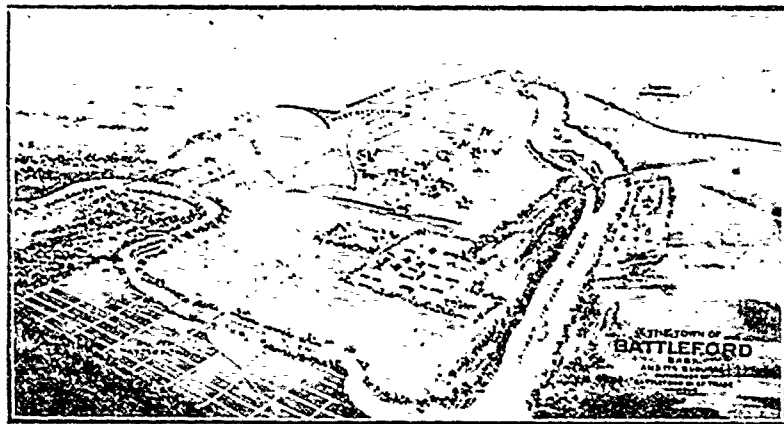
## BATTLEFORD'S

Assessment just completed show this Town's Assessment for the year 1912 to be \$2,953,081, as compared with \$1,026,477 Assessment of the year 1911. This almost trebling of the Assessment in one year is phenomenal, even in this country of record developments, and is a striking proof of the vastly altered prospects of the Town of Battleford within the past year.

## BATTLEFORD'S BUILDING PERMITS

for the past three months exceed the \$150,000.00 mark and these figures will be largely augmented by many buildings remaining to be erected before the close of this year.

**NOTHING NOW CAN DIVERT OR STOP BATTLEFORD'S EXPANSION.**



General View of Battleford's Beautiful City Site, Showing only a few of the Government and Civic Buildings.

All particulars cheerfully furnished by addressing

A. A. LESLIE, Commissioner,

BATTLEFORD, Saskatchewan, Canada

## BATTLEFORD WILL HAVE LOW TAX RATE FOR MANY YEARS.

The rate of Taxation for the year 1912 will be lower than that of any Town or City in the whole three Prairie Provinces. This rate will be fixed in August and by careful survey of figures now before us this year's rate cannot exceed

## ELEVEN 11 MILLS

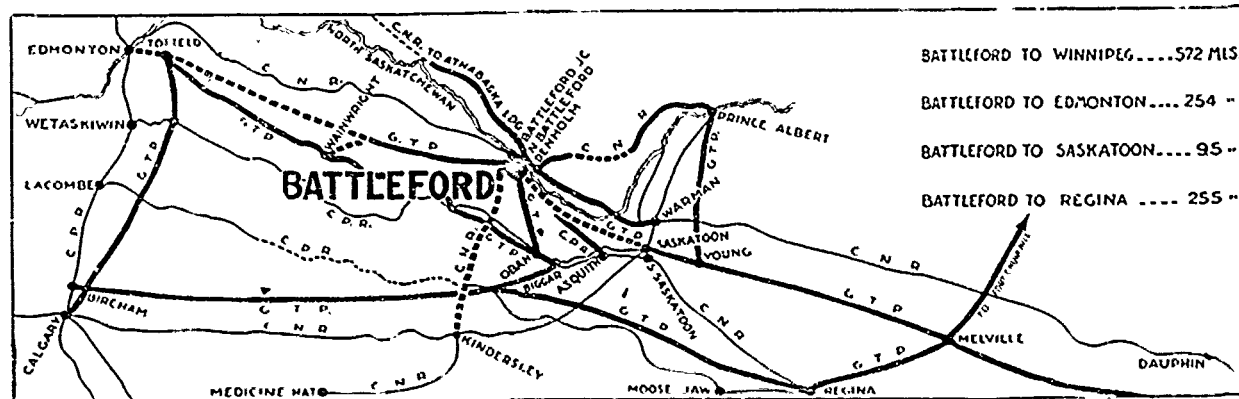
It is generally expected that the one cent (10 mills) will be quite sufficient to cover all requirements.

## CONCLUSION

In this brief survey of the resources advantages and prospects of the Town of Battleford the effect has been made to convey nothing but the truth.

What the Town of Battleford will become will inevitably result from present actual achievements and already existing advantages.

## BATTLEFORD'S RAILWAY FACTS



OFFICIAL MAP, SHOWING THE RAILWAY SITUATION AT BATTLEFORD AS ON SEPTEMBER 1st, 1912

In which is clearly shown that Battleford is at present served by four lines of railway, and has in addition two under construction, also two other lines which have Charters, much right of way approved and Engineers now on the routes pushing matters with all possible speed, thus giving Battleford **EIGHT (8) LINES OF RAILWAY** Operated by all three of the great Transcontinental lines

