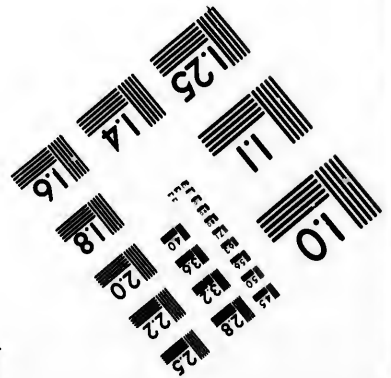
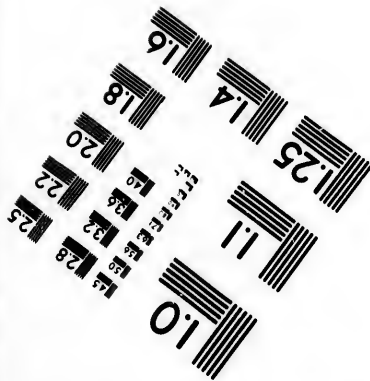
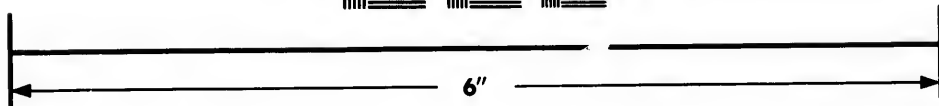
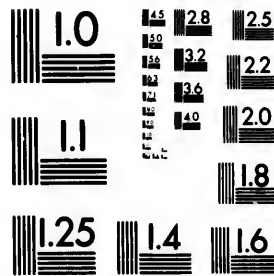


**IMAGE EVALUATION
TEST TARGET (MT-3)**



**Photographic
Sciences
Corporation**

23 WEST MAIN STREET
WEBSTER, N.Y. 14580
(716) 872-4503

1.5
1.6
1.8
2.0
2.2
2.5
2.8
3.2
3.6

**CIHM/ICMH
Microfiche
Series.**

**CIHM/ICMH
Collection de
microfiches.**



Canadian Institute for Historical Microreproductions / Institut canadien de microreproductions historiques

1.0
1.1
1.2
1.5
1.8
2.0
2.2
2.5
2.8
3.2
3.6

© 1984

Technical and Bibliographic Notes/Notes techniques et bibliographiques

The Institute has attempted to obtain the best original copy available for filming. Features of this copy which may be bibliographically unique, which may alter any of the images in the reproduction, or which may significantly change the usual method of filming, are checked below.

L'Institut a microfilmé le meilleur exemplaire qu'il lui a été possible de se procurer. Les détails de cet exemplaire qui sont peut-être uniques du point de vue bibliographique, qui peuvent modifier une image reproduite, ou qui peuvent exiger une modification dans la méthode normale de filmage sont indiqués ci-dessous.

Coloured covers/
Couverture de couleur

Coloured pages/
Pages de couleur

Covers damaged/
Couverture endommagée

Pages damaged/
Pages endommagées

Covers restored and/or laminated/
Couverture restaurée et/ou pelliculée

Pages restored and/or laminated/
Pages restaurées et/ou pelliculées

Cover title missing/
Le titre de couverture manque

Pages discoloured, stained or foxed/
Pages décolorées, tachetées ou piquées

Coloured maps/
Cartes géographiques en couleur

Pages detached/
Pages détachées

Coloured ink (i.e. other than blue or black)/
Encre de couleur (i.e. autre que bleue ou noire)

Showthrough/
Transparence

Coloured plates and/or illustrations/
Planches et/ou illustrations en couleur

Quality of print varies/
Qualité inégale de l'impression

Bound with other material/
Relié avec d'autres documents

Includes supplementary material/
Comprend du matériel supplémentaire

Tight binding may cause shadows or distortion along interior margin/
La reliure serrée peut causer de l'ombre ou de la distorsion le long de la marge intérieure

Only edition available/
Seule édition disponible

Blank leaves added during restoration may appear within the text. Whenever possible, these have been omitted from filming/
Il se peut que certaines pages blanches ajoutées lors d'une restauration apparaissent dans le texte, mais, lorsque cela est possible, ces pages n'ont pas été filmées.

Pages wholly or partially obscured by errata slips, tissues, etc., have been refilmed to ensure the best possible image/
Les pages totalement ou partiellement obscurcies par un feuillet d'errata, une pelure, etc., ont été filmées à nouveau de façon à obtenir la meilleure image possible.

Additional comments:
Commentaires supplémentaires:

This item is filmed at the reduction ratio checked below/
Ce document est filmé au taux de réduction indiqué ci-dessous.

10X	12X	14X	16X	18X	20X	22X	24X	26X	28X	30X	32X
								✓			

The copy filmed here has been reproduced thanks to the generosity of:

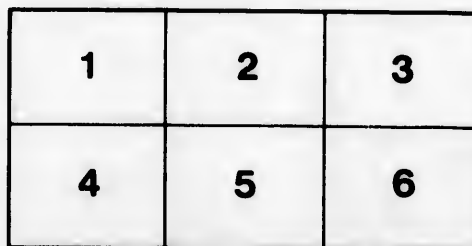
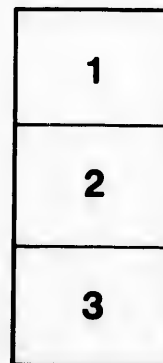
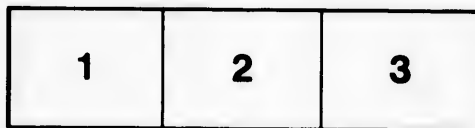
Library Division
Provincial Archives of British Columbia

The images appearing here are the best quality possible considering the condition and legibility of the original copy and in keeping with the filming contract specifications.

Original copies in printed paper covers are filmed beginning with the front cover and ending on the last page with a printed or illustrated impression, or the back cover when appropriate. All other original copies are filmed beginning on the first page with a printed or illustrated impression, and ending on the last page with a printed or illustrated impression.

The last recorded frame on each microfiche shall contain the symbol \rightarrow (meaning "CONTINUED"), or the symbol ∇ (meaning "END"), whichever applies.

Maps, plates, charts, etc., may be filmed at different reduction ratios. Those too large to be entirely included in one exposure are filmed beginning in the upper left hand corner, left to right and top to bottom, as many frames as required. The following diagrams illustrate the method:



L'exemplaire filmé fut reproduit grâce à la générosité de:

Library Division
Provincial Archives of British Columbia

Les images suivantes ont été reproduites avec le plus grand soin, compte tenu de la condition et de la netteté de l'exemplaire filmé, et en conformité avec les conditions du contrat de filmage.

Les exemplaires originaux dont la couverture en papier est imprimée sont filmés en commençant par le premier plat et en terminant soit par la dernière page qui comporte une empreinte d'impression ou d'illustration, soit par le second plat, selon le cas. Tous les autres exemplaires originaux sont filmés en commençant par la première page qui comporte une empreinte d'impression ou d'illustration et en terminant par la dernière page qui comporte une telle empreinte.

Un des symboles suivants apparaîtra sur la dernière image de chaque microfiche, selon le cas: le symbole \rightarrow signifie "A SUIVRE", le symbole ∇ signifie "FIN".

Les cartes, planches, tableaux, etc., peuvent être filmés à des taux de réduction différents. Lorsque le document est trop grand pour être reproduit en un seul cliché, il est filmé à partir de l'angle supérieur gauche, de gauche à droite, et de haut en bas, en prenant le nombre d'images nécessaire. Les diagrammes suivants illustrent la méthode.

ails
du
diffier
une
mage

rata
elure,
à



A YUKON SOUVENIR





THE PICTURESQUE

LAND OF GOLD

CLITS MAGNIFICENT MOUNTAIN AND WATER
SCENES. CLITS PEAKS, PASSES AND CANYONS.
CLTHE HOME OF THE MIDNIGHT SUN.
CLA LAND WITH A SUMMER CHARM.

PUBLISHED BY
THE BENNETT NEWS CO. and HAMACHER & DOODY
The Trade supplied. WHITE HORSE, YUKON TERRITORY, CANADA

THE NEW NORTH LAND

FOR countless ages all peoples have looked upon the North as a cold and barren land, the home of the iceberg and the storm. In the past few years it has been given to a favored few to learn that it is a land of beauty, of sunny days and clear skies, of foaming waters and green, dome-shaped hills, of high cliffs and rugged granite peaks, snow-crowned for all time to come. Old, yet seeming to ever change and to be always new, it is a land that charms and holds those who come; sometimes they go, but only to return again, for those who have looked upon the land love it for evermore.

This vast inland empire is known to the people of the North as the Yukon, and it is the watershed of the river of that name. The Indians call it Yu-kou-ah—meaning mighty water—and it is that and more. Its length is more than 2,000 miles and it drains an area of more than half a million square miles, and discharges more water into the sea than the Mississippi or the Amazon. It is seventy-five miles wide at its mouth, and at its source—at the summit of the White Pass—a child can step across. Large steamers navigate this river for eighteen hundred miles, and if you stand on the bank, one hundred miles from the mouth, you cannot see the other bank.

European countries having same latitude as the Yukon, with soil less rich and climate more rigorous, produce annually for export, cattle, sheep and horses by the thousand, and of grain and vegetables millions of bushels.

In the not far distant future this Empire of the North will do all this and more, her dome-shaped hills will with gold enrich nations and her fertile valleys feed them. In the five years

just passed the Yukon has added to the wealth of the world one hundred and fifty millions of dollars in gold. In the quantity, quality and value of furs produced annually the Yukon leads the world, and has no equal. The valley is rich in wood, coal, petroleum and copper; thousands of acres of wild grasses grow shoulder high; in the marshes are cranberries and huckleberries, and on the slopes are wild currants, gooseberries, strawberries and raspberries; in the waters fish; in the forests game; in the ground gold; of all countries we are the newest of the new and the richest of the rich. Of those who occupied the land in days gone by—the Red Lords of the North—but few remain; the ways of their white brothers are not theirs and to them meant extermination. Of those that are left the strongest are of the Pelly, Tananaw and Thlunget tribes; they have a semi-historical legendary history of their Asiatic origin that is very fascinating to the folk-lore lovers, and their dogs, half wolf half bear, are not to be seen elsewhere in the world.

The enchanting beauty of the wide-spreading Yukon Valley—its glorious sunshine and its wealth of vegetation and fruits and flowers—comes as a great surprise to one who beholds it for the first time, and often causes the exclamation, "This cannot be the North." And it is not the North Land of which you have read and thought perhaps to see, but away off in the distant blue are still the mountain peaks capped with eternal snows. No more glorious summers are to be found anywhere else on the earth's surface, nor for the sportsman, the Northern autumn. Here, in the late fall, you can hear the moose and caribou calling that it is time to get into their favorite meadows, where they winter; and hear in the white, soft evenings, the goats and sheep tramping in droves, and seeming to conter as to the best location for their exodus; the grouse call softly in the thickets; the squirrels are busy adding to their already overflowing storehouses; and there also are the bears—black, grizzly, brown and cinnamon—fat and sleepy, and in the sedges can be heard the ducks and geese, discussing their annual excursion to the south—truly a hunter's paradise.

THE PUBLISHERS BEG TO ANNOUNCE
THAT IT IS THEIR INTENTION—AT AN
EARLY DATE—TO FOLLOW THIS PUBLI-
CATION WITH A SOUVENIR OF DAWSON, AND
ONE ENTITLED "A SOUVENIR *of the* TANANA."



SKAGWAY, ALASKA



VALLEY OF THE SKAGWAY RIVER



TUNNEL MOUNTAIN WHITE PASS & YUKON RAILWAY



CIVILIZATION IN ALASKA, W. P. & Y. R.



STEEL BRIDGE, SUMMIT OF WHITE PASS, ALASKA



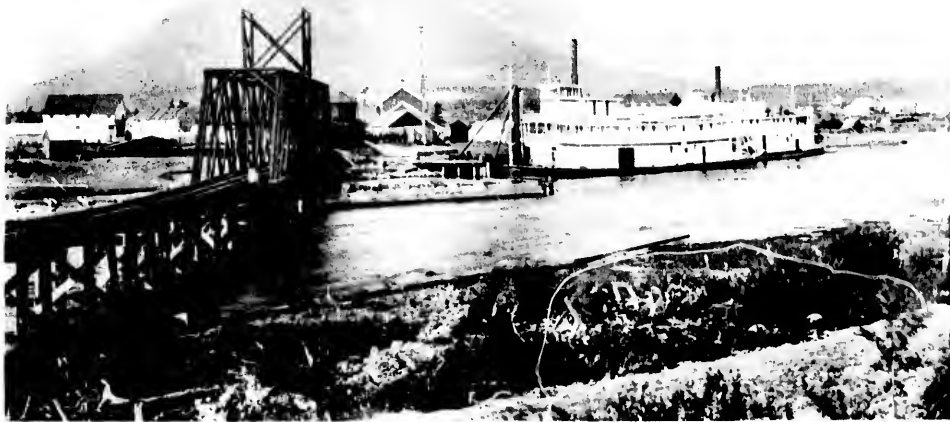
HANGING ROCKS, NEAR CLIFTON, W. P. & V. R.

HANGING ROCKS, NEAR CLEFTON, W. P. & Y. R.



A RAILROAD IN THE YUKON, WHITE PASS & YUKON RAILROAD

139212



A BRIDGE CROSSING W. WAY E.

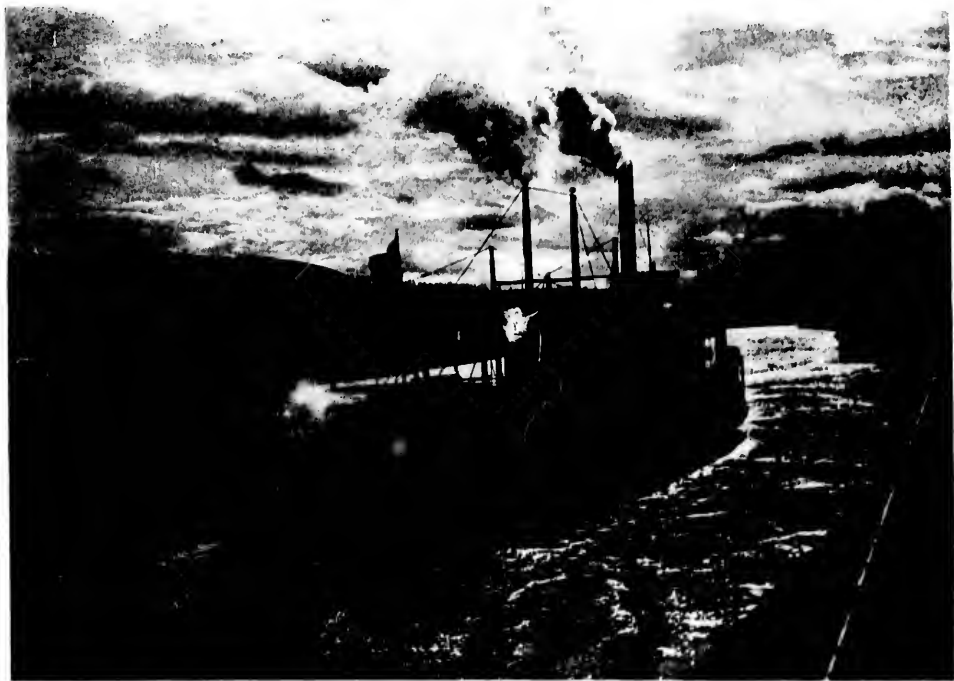


SHOOT — WILTHORPE RIVER — PLUMBOCAVOT.

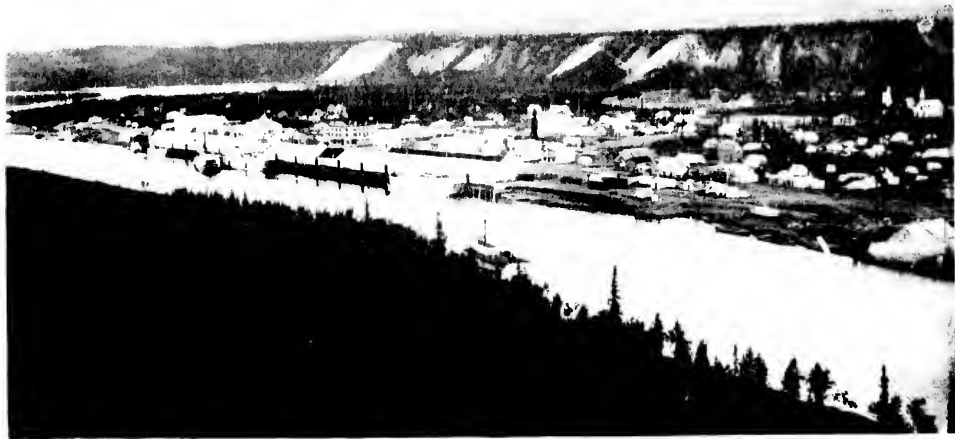




Mit - 000000



Passing the locks at Warm Springs, Missouri



WHITE HORSE, PHOTOGRAPHED AT MIDNIGHT



View of town of Monticello, N. M., from town of Williams, Ariz.



EVY Abost

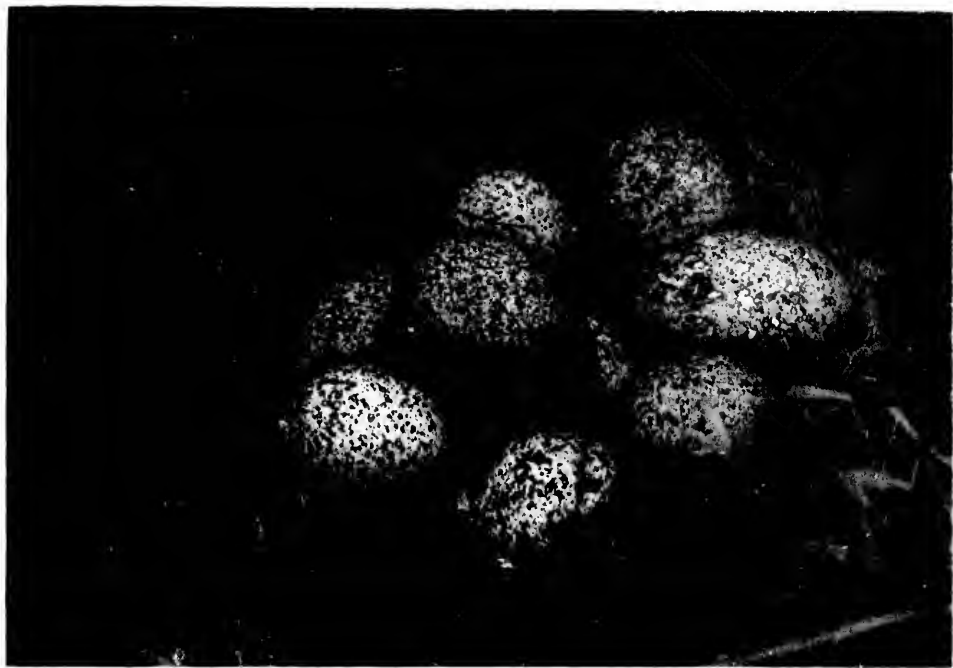


Logging Camp



УКЛОТЪ АУТОМОБИЛЪ













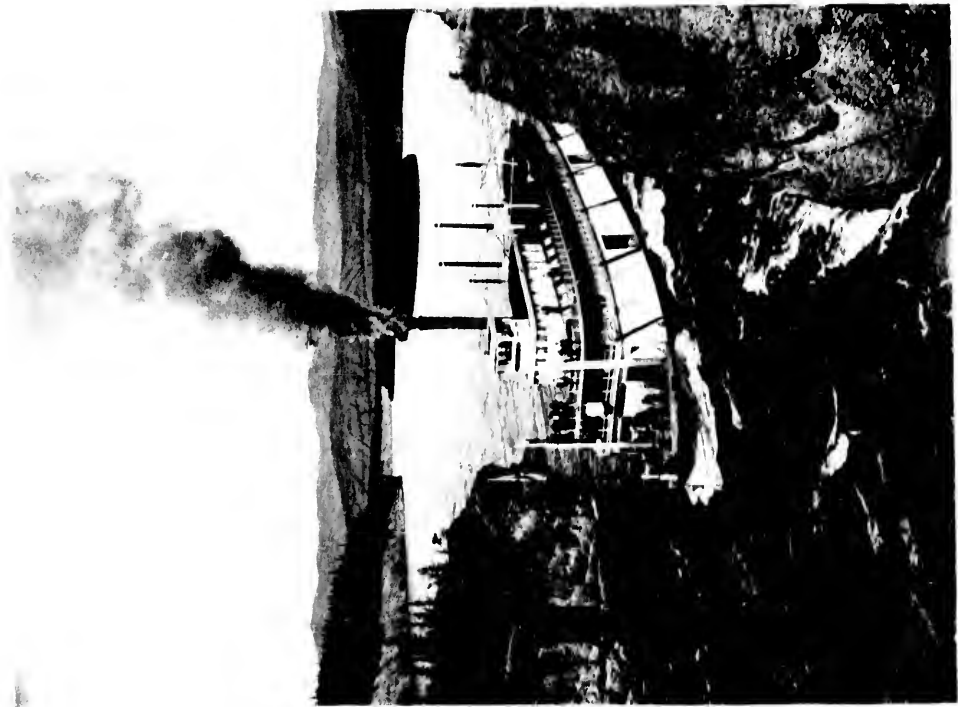
1911. P. 111



WYOMING DOGS



Figure 1. A pack train in the mountains.



SHIP AT WHARF, HULL, ENGLAND, 1906



Box of Men Pulling a Load of Supplies





Steamship on the Columbia River



SNAKE RIVER, IDAHO, MOUNTAIN VIEW.





111



Photograph



LOG CABIN ON THE SLOPE OF MOUNTAIN









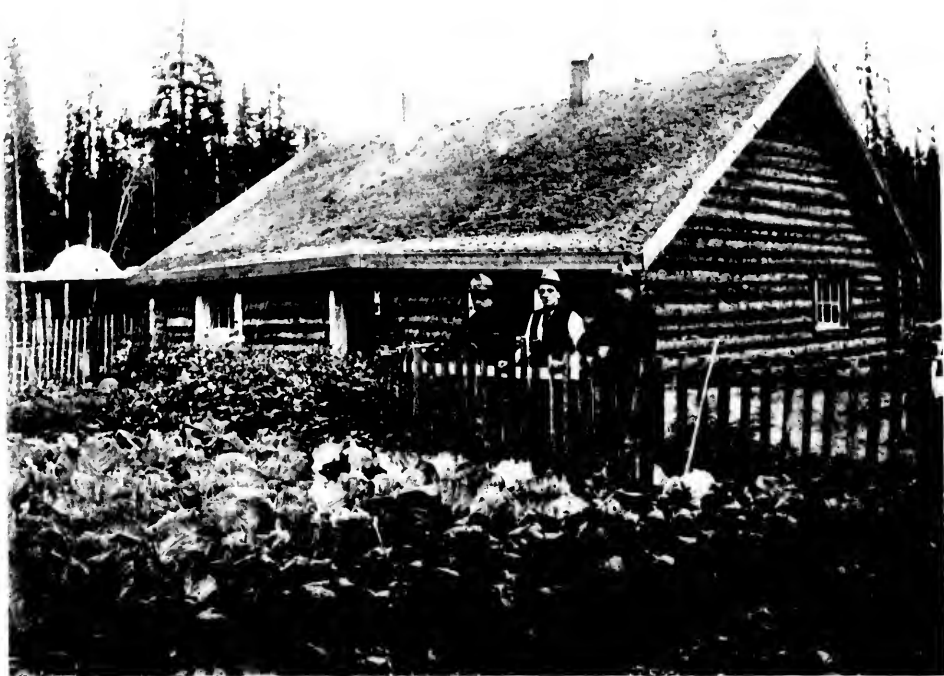
EXHIBITION OF THE UNITED STATES
DEPARTMENT OF THE INTERIOR



STEAMSHIP ON THE RIVER



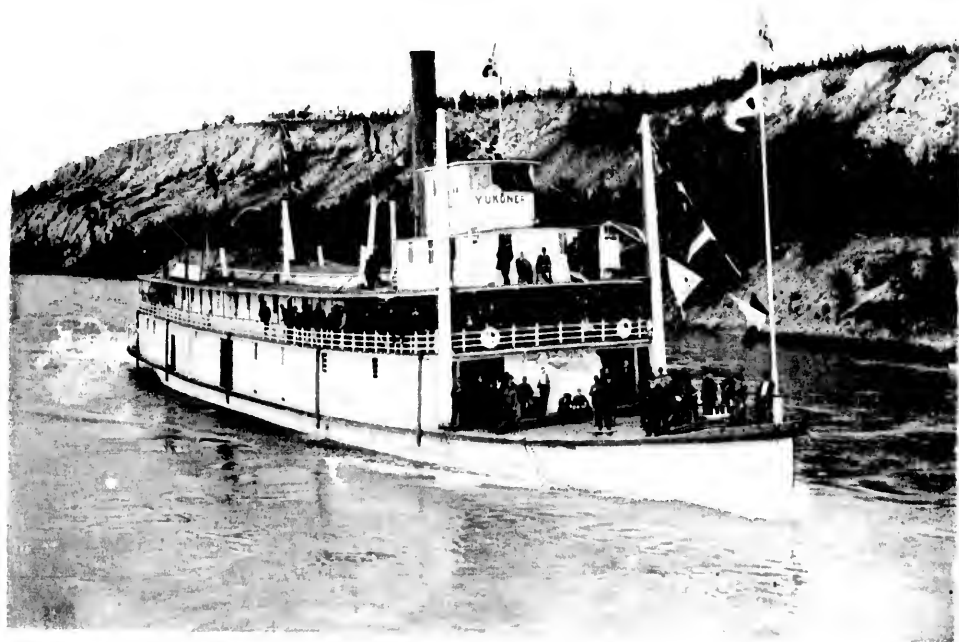
SIKAME, CALIF., 1900. WOODS AND MILL. (SEE PAGE 110.)



THE YACHT CLUB SHED



LAUNCHING STEAMER COLUMBIA





STEAMSHIP PASSING THROUGH THE GORGE AT NEW YORK





A KENTUCKY MINING SCENE



VIEW FROM DAM CONSTRUCTION



A MOUNTAIN HUNTER



Husky Team - Koyuk - 1950 - Half Fox of Eriqon



PACK TRAIN



FLORAL DISPLAY, DAWSON



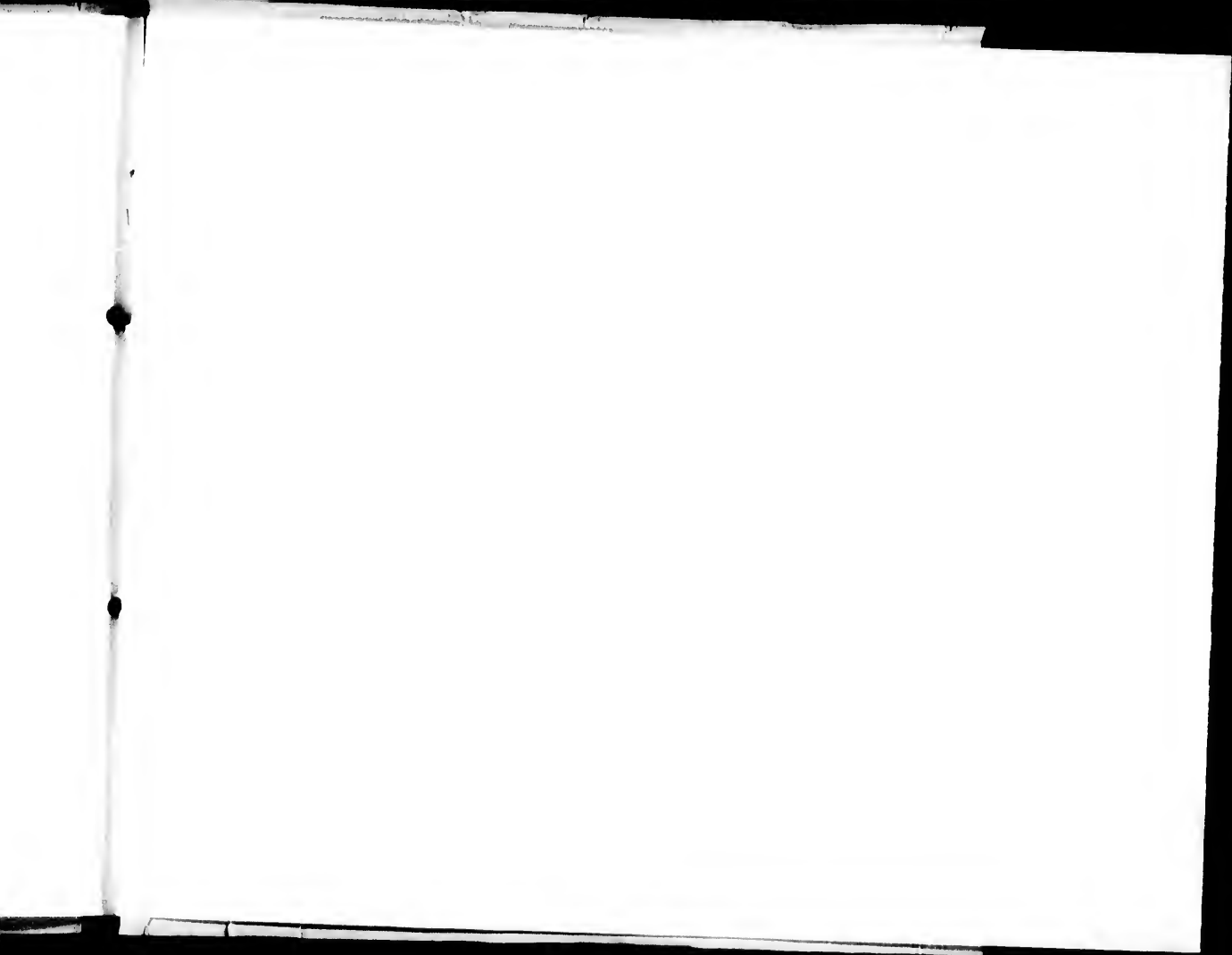
Fig. 1. The mine.



BRIDGE UNDER CONSTRUCTION



LAST SUPPERS OF THE SEASON ON THE YUKON RIVER







Fairview, Alaska

