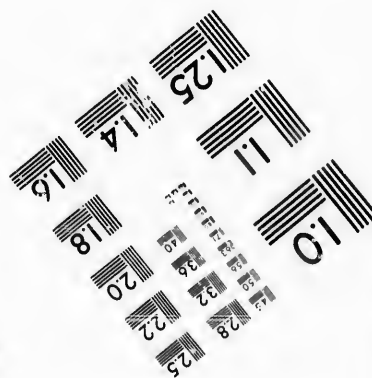
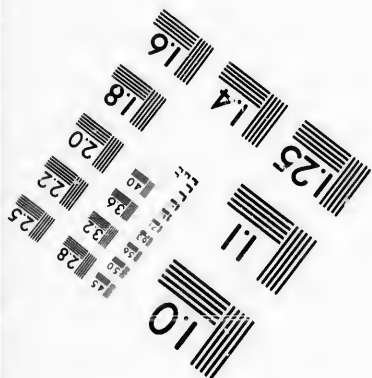
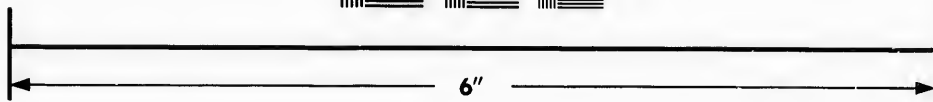
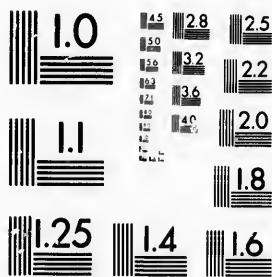


**IMAGE EVALUATION  
TEST TARGET (MT-3)**



**Photographic  
Sciences  
Corporation**

23 WEST MAIN STREET  
WEBSTER, N.Y. 14580  
(716) 872-4503

Can

1.5  
2.0  
2.2  
2.5  
2.8  
3.2  
3.6  
4.0  
4.5

**CIHM/ICMH  
Microfiche  
Series.**

**CIHM/ICMH  
Collection de  
microfiches.**



Canadian Institute for Historical Microreproductions / Institut canadien de microreproductions historiques

10  
11  
12  
13  
14  
15  
16  
17  
18  
19  
20

**© 1987**

Technical and Bibliographic Notes/Notes techniques et bibliographiques

The Institute has attempted to obtain the best original copy available for filming. Features of this copy which may be bibliographically unique, which may alter any of the images in the reproduction, or which may significantly change the usual method of filming, are checked below.

L'Institut a microfilmé le meilleur exemplaire qu'il lui a été possible de se procurer. Les détails de cet exemplaire qui sont peut-être uniques du point de vue bibliographique, qui peuvent modifier une image reproduite, ou qui peuvent exiger une modification dans la méthode normale de filmage sont indiqués ci-dessous.

- |  |  |
|--|--|
| <input checked="" type="checkbox"/> Coloured covers/<br>Couverture de couleur  | <input type="checkbox"/> Coloured pages/<br>Pages de couleur   |
| <input type="checkbox"/> Covers damaged/<br>Couverture endommagée  | <input type="checkbox"/> Pages damaged/<br>Pages endommagées   |
| <input type="checkbox"/> Covers restored and/or laminated/<br>Couverture restaurée et/ou pelliculée  | <input type="checkbox"/> Pages restored and/or laminated/<br>Pages restaurées et/ou pelliculées  |
| <input type="checkbox"/> Cover title missing/<br>Le titre de couverture manque   | <input checked="" type="checkbox"/> Pages discoloured, stained or foxed/<br>Pages décolorées, tachetées ou piquées   |
| <input type="checkbox"/> Coloured maps/<br>Cartes géographiques en couleur   | <input type="checkbox"/> Pages detached/<br>Pages détachées  |
| <input type="checkbox"/> Coloured ink (i.e. other than blue or black)/<br>Encre de couleur (i.e. autre que bleue ou noire)   | <input checked="" type="checkbox"/> Showthrough/<br>Transparence   |
| <input type="checkbox"/> Coloured plates and/or illustrations/<br>Planches et/ou illustrations en couleur  | <input type="checkbox"/> Quality of print varies/<br>Qualité inégale de l'impression   |
| <input type="checkbox"/> Bound with other material/<br>Relié avec d'autres documents   | <input type="checkbox"/> Includes supplementary material/<br>Comprend du matériel supplémentaire   |
| <input type="checkbox"/> Tight binding may cause shadows or distortion<br>along interior margin/<br>La reliure serrée peut causer de l'ombre ou de la<br>distorsion le long de la marge intérieure   | <input type="checkbox"/> Only edition available/<br>Seule édition disponible   |
| <input type="checkbox"/> Blank leaves added during restoration may<br>appear within the text. Whenever possible, these<br>have been omitted from filming/<br>Il se peut que certaines pages blanches ajoutées<br>lors d'une restauration apparaissent dans le texte,<br>mais, lorsque cela était possible, ces pages n'ont<br>pas été filmées. | <input type="checkbox"/> Pages wholly or partially obscured by errata<br>slips, tissues, etc., have been refilmed to<br>ensure the best possible image/<br>Les pages totalement ou partiellement<br>obscurcies par un feuillet d'errata, une pelure,<br>etc., ont été filmées à nouveau de façon à<br>obtenir la meilleure image possible. |
| <input type="checkbox"/> Additional comments:/<br>Commentaires supplémentaires:  |  |

This item is filmed at the reduction ratio checked below/  
Ce document est filmé au taux de réduction indiqué ci-dessous.

10X	14X	18X	22X	26X	30X
<input type="checkbox"/>	<input type="checkbox"/>	<input type="checkbox"/>	<input checked="" type="checkbox"/>	<input type="checkbox"/>	<input type="checkbox"/>
12X	16X	20X	24X	28X	32X

The copy filmed here has been reproduced thanks to the generosity of:

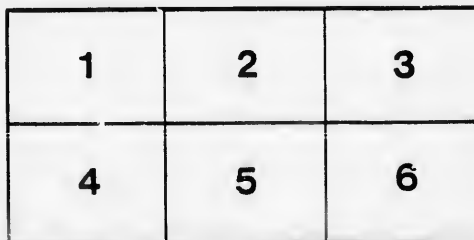
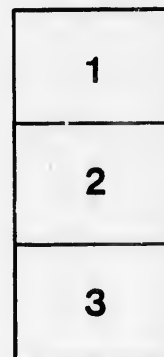
D. B. Weldon Library  
University of Western Ontario  
(Regional History Room)

The images appearing here are the best quality possible considering the condition and legibility of the original copy and in keeping with the filming contract specifications.

Original copies in printed paper covers are filmed beginning with the front cover and ending on the last page with a printed or illustrated impression, or the back cover when appropriate. All other original copies are filmed beginning on the first page with a printed or illustrated impression, and ending on the last page with a printed or illustrated impression.

The last recorded frame on each microfiche shell contain the symbol  $\rightarrow$  (meaning "CONTINUED"), or the symbol  $\nabla$  (meaning "END"), whichever applies.

Maps, plates, charts, etc., may be filmed at different reduction ratios. Those too large to be entirely included in one exposure are filmed beginning in the upper left hand corner, left to right and top to bottom, as many frames as required. The following diagrams illustrate the method:



L'exemplaire filmé fut reproduit grâce à la générosité de:

D. B. Weldon Library  
University of Western Ontario  
(Regional History Room)

Les images suivantes ont été reproduites avec le plus grand soin, compte tenu de la condition et de la netteté de l'exemplaire filmé, et en conformité avec les conditions du contrat de filmage.

Les exemplaires originaux dont le couverture en papier est imprimée sont filmés en commençant par le premier plat et en terminant soit par la dernière page qui comporte une empreinte d'impression ou d'illustration, soit par le second plat, selon le cas. Tous les autres exemplaires originaux sont filmés en commençant par la première page qui comporte une empreinte d'impression ou d'illustration et en terminant par la dernière page qui comporte une telle empreinte.

Un des symboles suivants apparaîtra sur la dernière image de chaque microfiche, selon le cas: le symbole  $\rightarrow$  signifie "A SUIVRE", le symbole  $\nabla$  signifie "FIN".

Les cartes, planches, tableaux, etc., peuvent être filmés à des taux de réduction différents. Lorsque le document est trop grand pour être reproduit en un seul cliché, il est filmé à partir de l'angle supérieur gauche, de gauche à droite, et de haut en bas, en prenant le nombre d'images nécessaire. Les diagrammes suivants illustrent la méthode.

LIST OF VOTERS

OF THE

TOWN OF STRATHROY

FOR THE

YEAR 1885.

Received at Sherriff Office, London  
September 8<sup>th</sup> 1885

STRATHROY, ONT.:

THE AGE & BOOK AND JOB PRINTING HOUSE, FRONT STREET

1885.

*Wm Glass*  
*Sherriff by atty*  
*per J. J.*

SCHEDULE OF POST OFFICES

1. STANTON	13. ANNON
2. ARLAND	14. BILNOR
3. EASTON	15. TORO
4. PEBBOLIA	16. SANDY
5. WATFORD	17. WATFORD
6. NEWBURY	18. OLD SPRINGS
7. LORO	19. CHATFIELD
	20. HAMILTON

Comp  
S

PAK

Roll  
No.

8  
J 14  
J 20  
J 29  
152

J 55  
J 57  
101  
580  
621

52  
111  
J 133  
J 134  
J 135  
J 137  
138  
139  
J 152  
958  
J 139  
J 158  
159  
160  
217

215  
216

# VOTERS' LIST FOR 1885, TOWN OF STRATHROY.

## Polling Sub-Division No. 1,

Comprising all that part of the Town lying West of McKellar and Richmond Streets, and South of the road allowance between 4th and 5th Concessions of Adelaide. Polling place, Maitland Street School House.

*PART I.—Persons entitled to Vote at BOTH Municipal Elections and Elections to the Legislative Assembly.*

Roll No.	NAME.	Concession or Street.	No. of Lot or Part Lot.	Other Description.	○
	8.. Akroyd, Joseph	E Milner	25	F	1
J 14	..Armstrong, W H	5	pt 21, &c	F	1
J 20	..Ashwell, George	J and W sy	29, 30	F	1
J 29	..Alison, Peter J	W & E Oak Avenue	3, 4, &c	F	1
152	..Auld, Adam	S Albert	23	F	1
J 55	..Beer, Jacob	S and K sy	10 in 10, 13	F	1
J 57	..Bell, Archibald	con 5	part 21	H	1
101	..Black, James	E Oxford	19	T	1
580	..Bruton, William	E Milner	2	F	1
621	..Buttery, William	S Albert	3	F	1
52	..Campbell, W A	McK and McR sy	parts 10, 11	F	1
111	..Carruthers, Andrew	E Oxford	part 19	H	1
J 133	..Clark, Gilbert	W McKellar	3, 4	F	1
J 134	..Clark, John G	W McKellar	9, 10	F	1
J 135	..Campbell, D M	W McKellar	9	F	1
J 137	..Currie, Daniel	E Milner	21 to 24	F	1
138	..Cain, Wm	W McKellar	4	T	1
139	..Calcut, John	Armstrong sy	22	H	1
J 152	..Campbell, W C	S Albert	23	H	1
958	..Campbell, Edward	Armstrong sy	25, 26	F	1
J 139	..Calcut, J W	Armstrong sy	22	F	1
J 158	..Carson, J S	con 5	part 20	F	1
159	..Copeland, James	con 5	part 20	F	1
160	..Cleverdon, Lawrence	J and W sy	45 to 48	F	1
217	..Cook, James	S Metcalfe	6	F	4
215	..Degroat, Harvey	W Milner	48	F	1
216	..Dalton, Dukes	W Milner	41, 42	F	1

Roll No.	NAME.	Concession or Street.	No. of Lot or Part Lot.	Other Description.	○	Roll No.
217	Dunsmore, Thos	S Metcalfe	6	H	1	
222	Dell, Hiram	J and W sy	33	H	1	
222	Dell, Howard	J and W sy	33	F	1	
223	Degroat, Charles	S Albert	25	T	1	
J 227	Davis, David	Young survey	6, 7, 8, 9	F	1	345
241	Dickenson, Richard	E Oxford	16	F	1	
J 242	Diprose, Robert	Corneil survey	7	H	1	J 454
J 242	Drynay, William	E Oxford	18	F	1	
256	Easterbrook, Rich	N Burns	5, 6, 7	F	18	
J 257	Ewer, Wm H	T and L sy	4	F	1	
J 258	Evans, John H	con 5	part 21	H	1	J 482
259	Evans, Frank	con 5	part 21	H	1	J 483
260	Elliott, William	J and W sy	8, 9	T	1	484
260	Elliott, John	J and W sy	8, 9	F	1	J 485
262	Ellico, Charles	con 10	part 11	F	1	488
275	Evans, David	S Albert	4	H	1	J 490 333
J 287	Fletcher, Benjamin	W McKellar	7	F	1	
J 288	Fletcher, Wm B	W McKellar	pt 2	F	1	J 602
J 289	Ferris, W Y jr	Armstrong sy	5, 6	H	1	503
293	Frank, Solomon	J and W sy	64 to 68	F	1	J 504
294	Frank, Zacharias	S Albert	25	H	1	J 507
302	Fullerton, James	S Albert	1	F	1	J 508
307	Folinsbee, John	Corneil's sy	7	H	1	
311	Frank, John	J and W sy	69 to 73, 81 to 93	F	1	
J 316	Ferguson, Wm	W Oxford	8	H	1	
J 682	Ferguson, James	Corneil's sy	3, 4	F	1	579
66	Frank, Hiram G	J and W sy	34, 50, 51	F	1	580
581	Fisher, John	W McKellar	4, 5	F	1	J 581 582 583 584
J 332	Gordon, George	W McKellar	1, 2	H	1	606
J 333	Gilzean, J T A	} con 10	pt 10	F	1	614
J 334	Gilzean, G D			F	1	J 621
336	Gilley, John	W McKellar	8, 9	H	1	643
337	Gregory, Benjamin	W McKellar	4, 5	H	1	645
J 338	Guille, Nicholas	S and K sy	10 in 10	H	1	646
J 345	Geoghegan, Charles	Sydenham place	15	H	1	J 648
355	Goodwin, Abraham	W Oxford	6, pt 7	F	1	J 656
360	Geddes, J R	E Oxford	19	H	1	J 682
959	Humphries, Samuel	T and L sy	6	F	1	J 668
387	Harnett, Isaac	W Oak avenue	24	F	1	702
390	Hagarty, Edward	E McKellar	2	F	1	J 703
J 404	Hoag, Wm	S Albert	25	H	1	713
407	Henderson, Greg	Corneil sy	1	F	1	715
413	Hutchcroft, Wm	Hyman sy	3 to 5, 15 to 18	F	5	
437	Hanley, J H	N North	13	F	1	
J 436	Harrison, T F	W Oxford	pt 7	T	1	
461	Hunt, Squire	Sydenham place	12	F	1	J 718
J 1033	Hudson, John	J and W sy	pt 57	F	1	J 719
780	Hinchclife, George	Armstrong sy	1 to 4	F	1	



POLLING SUB-DIVISION No. 1.

3

Roll No.	NAME.	Concession or Street.	No. of Lot or Part Lot.	Other Description.	○
857	Hull, W W	J and W sy	10 to 11	F	1
345	Ivison, J A Rev	Sydenham place	15	F	1
J 454	Ingrouville, Stephen	Armstrong sy	7 to 10	F	1
461	Jury, Wm	Sydenham place	12	H	1
J 482	Kettlewell, Richard	N Burns	2, 3	F	1
J 483	Keys, John	E Milner	32, 33, 34	F	1
484	Koppleberger, Abel	S Metcalfe	W pt 9	F	1
J 485	Kinder, Chas A	J and W sy	31, 32	H	1
488	Ketchum, H E	S Albert	20, 21, 22	H	1
J 490	Kerr, Robert	con 4	22	T	1
333	Kittridge, A H	con 10	pt 10	F	1
J 602	Lindsay, John	E Oak avenue	13, 14	F	1
503	Lindsley, George	E Oak avenue	20	F	1
J 504	Lightheart, George	E Milner	31	F	1
J 507	Lightheart, Lanson	J and W sy	40, 41, 42	F	1
J 508	Lenfestey, James	J and W sy	53, 54	F	1
579	Morgan, John	E Milner	29, 30	F	2
580	McKellar, Dougald	E Milner	2	H	1
J 581	McDade, Wm	W McKellar	2	F	1
582	Morrow, Thos E	W McKellar	4, 5	H	1
J 583	Murphy, Robert	con 10	7, 8	F	1
J 584	Martin, Samuel	W McKellar	8, 9	F	1
606	McLarty, Robert	Hyman's sy	2	F	1
614	McKellar, John	W McKellar	13, 14	F	15
J 621	Munro, Wm	S Albert	3	H	1
643	Meek, Wm H	S Albert	2	F	1
645	Murray, Wm H	J and W sy	4 to 7	F	1
646	McIntosh, J W	J and W sy	55 to 58	F	1
J 648	Maitland, Edwin	W Oxford	9 to 11	H	1
J 656	McBride, Samuel	E Oxford	N hf 17	H	1
J 682	Mathers, Wesley	Corneil sy	3, 4	H	1
J 668	Neil, George H	W McKellar	18	F	1
702	Nicholson, James	con 5	pt 20	F	1
J 703	Nichol, Peter	con 5	pt 20	F	1
713	Noble, James	W Oxford	pt lot	F	1
715	Nugent, Edmond	J and W sy	76 to 80	F	1
J 718	Owens, Henry	N Burns	1, pt 2	F	1
J 719	O'Dwyer, Michael	T and L sy	9	F	1

Roll No.	NAME.	Concession or Street.	No. of Lot or Part Lot.	Other Description.	○
751	Pullen, George	Hyman's sy	pt 1	F	2
745	Park, Edward	W Milner	1	F	1
766	Pincombe, Richard	Hyman's sy	6 to 14	F	1
778	Porter, John	Armstrong sy	18, 19	F	9
J 778	Rutledge, W H	Armstrong sy	18, 19	H	1
J 779	Remey, Charles	T and L Co sy	7	H	1
J 780	Ross, Peter	Armstrong sy	1, 2, 3, 4	H	1
J 782	Richards, Robert	5	pt 21	F	1
785	Riddle, Andrew	J and W sy	39	F	1
J 786	Raymond, John	J and W sy	49	F	1
J 795	Roney, James	S Metcalfe	pt 5	H	1
J 798	Roach, B G	W Oak avenue	14 to 18	F	1
J 801	Ray, Samuel	W McKellar	5 and 6	F	1
J 808	Rapley, Manfred	E Oxford	19	H	1
J 806	Robertson, John	E Oxford	17	H	1
J 779	Stevenson, Robert	T and L sy	pt 7	F	1
835	Sinclair, Dougald	W McKellar	8	F	1
J 838	Smith, Henry	E Oak avenue	16, 18, 19	F	1
839	Smith, R B	E Oak avenue	17	T	1
J 843	Stevenson, Edward	T and L sy	pt 7	O	1
J 847	Steer, George	S Metcalfe	pt 4	F	1
J 857	Smith, Wm C	J and W sy	10, 11	H	1
J 858	Saxton, Francis B	J and W sy	12, 13, 14	H	1
J 859	Smith, James W	J and W sy	62, 63	F	1
J 860	Smith, L H	J and W sy	58 to 61	F	1
J 863	Shields, John	Hyman sy	1, 2	F	1
J 878	Smith, Henry C	W Oak avenue	pt 4, 5, 8, 9 &c	T	1
886	Springer, Menno	S Albert	5	F	1
289	Tomlinson, Thos	Armstrong sy	5, 6	F	1
275	Thompson, Arch	S Albert	4	F	1
14	Thompson, J H	con 5	pt 20	F	1
858	Thompson, Isaae	J and W sy	12, 13, 14	F	1
905	Trotham, Wm	W McKellar	16	F	1
J 906	Tyler, John	S Burns	E pt 24, 25	F	1
316	Thompson, James	W Oxford	8	F	1
J 956	White, E A	W Milner	51, 52, 54 to 60	F	1
957	Walker, Joseph	W Milner	pt 1	F	1
958	Wilson, Francis	Armstrong sy	25, 26	H	1
J 959	Weeks, George	T and L sy	6	T	1
J 966	Williams, Michael	J and W sy	74, 75	F	1
J 967	Weeks, John	J and W sy	52	T	1
J 968	Wilson, Wm	S Albert	25	H	1
J 969	Widdis, Robert	con 5	pt 20	F	1
J 1005	Young, George	con 5	part 21	F	1

Pa  
Roll  
No.  
52  
67

154  
155

292  
307

406

505  
509

599

752

839

648

57

806

861

842

1004

*Part II—Persons entitled to Vote at Municipal Elections ONLY.*

Roll No.	NAME.	Concession or Street.	No. of Lot or Part Lot.	Other Description.	○
52	Bickerstaff, Ann	W McKellar	10, 11	F	1
67	Bryans, Maggie	J and W sy	34, 50, 51	F	1
154	Crawford, Isabella	S Albert	pt 25	H	1
155	Corneil, Jane	Corneil sy	7	H	1
292	Fry, Sarah	J and W sy	27	F	1
307	Folinsbee, Mary	Corneil sy	pt 7	H	1
406	Humphries, Louisa	Corneil sy	5	H	1
505	Lewis, Ann	J and W sy	56, 57	H	1
509	Livingston, Mary	S Albert	25	H	1
599	Maxwell, Mary A	S Albert	25	H	1
752	Pearce, Jane	Corneil sy	1	H	1
839	Smith, Francis	E Oak avenue	17	F	1
648	Smith, Rosina	W Oxford	10, 11	F	1
57	Saul, Ann	con 5	1	F	1
806	Saunders, Elizabeth	E Oxford		F	1
861	Smythe, Harriet	Corneil sy		H	1
842	Stonehouse, Mary	T and L sy		F	1
1004	Young, Ellen	con 5		F	1

*Part III. the same as Part I.*

### Polling Sub-Division No. 2,

Comprising all that part of the Town lying West of Maria Street to its intersection at the side road, thence west thereof and north of the road allowance between the 4th and 5th Concessions of Adelaide. Polling place, at or near R. P. Smith's Coach House.

#### PART I.—Persons entitled to Vote at BOTH Municipal Elections and Elections to the Legislative Assembly.

Roll No.	NAME.	Concession or Street.	No. of Lot or Part Lot.	Other Description.	○
14	Armstrong, W H	con 4	pt 20	F	1
165	Alison, B H	S North	pts 8, 9	F	1
75	Baskerville, J W	Crealy sy	5, 6	F	1
76	Brown, Thomas	con	pt 21	F	1
77	Bishop, George	Crealy sy		F	1
78	Bishop, George jr	N Saunbury st		F	1
86	Bell, Richard	N North	2	F	1
95	Baskerville, Thos	con 4	pt 20	H	1
101	Black, James	N Albert	W hf 12	T	1
105	Bntler, James	cor 4	pt 21	F	1
99	Black, John	N Centre	48, 49	F	1
161	Cummings, John	Saunbury sy	8	F	1
162	Campbell, John	Saunbury sy	pt 26	F	1
163	Challoner, Thos	Saunbury sy	25	F	1
164	Croucher, George	Saunbury sy	11	H	1
165	Corpron, W H	S North	pt 8, 9	H	1
184	Crealy, Truman	con 4	pt 20	F	1
200	Clark, J R	S North	pts 7, 8	F	1
406	Cummings, Charles	con 4	pt 22	F	1
229	Dale, Thomas	Saunbury sy	pt 26	F	1
231	Dudley, George	con 4	S E pt 21	F	1
258	Evans, John H	S North	9	F	1
261	Eakins, S A	N Albert	36	H	1
264	Evoy, George	con 4	pt 21	H	1
265	Eakins, Joseph	Saunbury sy	pt 6	F	1
266	Edwards, H F	Saunbury sy	pt A	F	1
267	Eastman, Wesley	con 4	pt 21	T	1
267	Eastman, Chester	con 4	pt 21	F	1
410	Elliott, Charles	Rapley sy	1	F	4
410	Elliott, John	Rapley sy	1	F	4
344	Gott, David	con 4	pt 20	F	1
352	German, G G	Rapley sy	15	H	1
352	German, C E	Rapley sy	15	T	1

Roll No.  
 356...G  
 J 362...G  
 J 365...G  
 369...G  
 382...G  
  
 J 483...H  
 J 408...H  
 J 409...H  
 J 410...H  
 412...H  
 J 416...H  
 J 417...H  
 432...H  
  
 471...  
  
 J 458...J  
 460...J  
 J 462...  
  
 101...  
  
 513...  
 J 514...  
 518...  
 J 519...  
  
 607...  
 J 610...  
 607...  
 J 612...  
 J 616...  
 619...  
 622...  
 623...  
 J 636...  
 649...  
 668...  
 J 978...  
 679...  
 468...  
 J 879...  
  
 701...  
 J 702...

POLLING SUB-DIVISION No. 2.

7

Roll No.	NAME.	Concession or Street.	No. of Lot or Part Lot.	Other Description.	C
356.	Grant, W H	Saulsbury sy	pt A	F	1
J 362.	Gott, William	N North	pt 2	F	1
J 368.	Greenaway, Chas	Rapley sy	5	F	1
369	Grist, Charles	Saulsbury sy	1	F	1
382.	Gooden, Charles	Rapley sy	15	F	1
J 483	Hilton, Friend	N Albert	37	F	1
J 408	Hull, Jacob	con 4	pt 20	F	1
J 409.	Hutton, G Y	Saulsbury sy	pt A	F	1
J 410.	Holmes, John	Rapley sy	1	H	1
412	Hilton, Alex	S North	pt 5, 6	F	1
J 416	Hendershot, Alouzo	con 4	W Maria	H	1
J 417	Hunter, George	S Front	12	H	1
432	Hoskin, F T	Saulsbury sy	4	F	1
471	Ivor, John	pt 22	W Maria	H	1
J 458	Jury, O B	Rapley sy	7, 8	H	1
460.	James, Thomas	Rapley sy	7	F	1
J 462.	Jay, Wm	S Front	N hf 8	H	1
101.	Koppelberger, H	N Albert	W hf 12	F	1
513	Lee, Andrew	Rapley sy	pt 3	F	1
J 514	Leitch, D L	Rapley sy	9	F	1
518	Lenfestey, John	S Front	9, 10	F	1
J 519	Leonard, Michael	N Centre	39	F	1
607	Martyn, Wm	Crealy sy	31	H	1
J 610.	McIntyre, Peter	Saulsbury sy	15, 16	F	1
607	Marshall, George	Crealy sy	31	F	1
J 612	Maxwell, W E	Rapley sy	14	H	1
J 616	Mitchell, Hugh	N North	14	H	1
619	McBride, Wm	S North	13, 14	F	1
622	Moore, W H	N Centre	N hf 39	H	1
623	McIntosh, J H	S Front	S hf 8	H	1
J 636	Macrault, John S	N Front	pt 16	H	1
649	Moore, Isaac	Rapley sy	1 to 4, 13	F	1
668.	McCull, Hugh	Saulsbury sy	21, 22	F	1
J 978	Mackintosh, F P	N Front	pt 17	H	1
679	Manson, James	Rapley sy	3	F	1
468.	McLarty, Robert	Rapley sy	7, 8	F	1
J 879	McCrov, Thos	N North	con 4, pt 22	F	1
701	Nicholson, Robert	con 4	E hf of W hf 20	F	1
J 702	Nicholson, James	con 4			1

## POLLING SUB-DIVISION No. 2.

Roll No.	NAME.	Concession or Street.	No. of Lot or Part Lot.	Other Description.	Other	0
J 714.	Nicholson, Henry	Rapley sy	5, 6		F	1
715.	N 1gent, Edmund	N Front	13		F	1
J 725.	Orchard George	Saulsbury sy	2		F	1
J 728.	O'Dwyer, Patrick	S Front	13		H	1
748.	Parker, James	Crealy sy	1 to 4		F	1
J 754.	Petch, Francis	Saulsbury sy	17		F	1
J 789	Robertson, D S	Rapley sy	pt 14		T	1
J 790.	Rason, Andrew	N North	15		O	1
793.	Rowland, Edward	Reid sy	N North, 2		F	1
794.	Richardson, Thos	S Front	11		F	1
804.	Rapley, L F	S Front	pt 12		T	1
809.	Rapley, Wm	Rapley sy	2		F	1
862.	Shepherd, Wm	con 4	S W 1/4 21		F	1
J 864.	Seed, Hugh	Saulsbury sy	12		F	1
870.	Sanderson, Rev Dr	N Front	13, 14		O	1
J 879.	Sutherland, Robert	N North	con 4, pt 22		F	1
885.	Snell, W F	N Albert	10, 11 &c		F	1
J 895.	Scatcherd, Allan	N Front	15		F	1
897.	Scott, Chester G	con 4	pt 21		F	1
899.	Smith, Richard P	Rapley sy	10, 11, 12		F	1
490.	Stevenson, Judge	con 4	pt 21		F	1
616.	Smith, Thos	N North	14		F	1
912.	Thompson, James	Saulsbury sy	pt 3		F	1
915.	Thompson, George	Rapley sy	8, 9		F	1
920.	Taylor, J F	N Front	16, 17		H	1
J 921.	Tucker, Titus	Rapley sy	16		H	1
923.	Thompson, Dr A	N Front	14		F	1
471.	Tisdall, Frederick	pt 22	W Maria		F	1
J 930.	Urquhart, Hector	N Albert	38		F	1
970.	Williston, J K	con 4	pt 21		F	1
J 971.	Walker, W B	Rapley sy	4, &c		F	1
972.	Weeks, George	Saulsbury sy	9		F	1
J 974.	Wilson, Francis	S North	pt 5, 6		H	1
1000.	Wetherell, E	S North	pt 5, 6		F	1
J 1001.	Woodhull, Wesley	con 4	pt 20		F	1
105.	Wray, Wm	N North	5		F	1
J 864.	Wiley, David	Saulsbury sy	12		F	1

Par

Roll No.

84..

196..

196..

196..

196..

196..

264..

364..

448.

790.

894.

921.

1007



### Polling Sub-Division No. 3,

Comprising all that part of the Town lying West of Caradoc street, north of Centre street to Frank street, thence north of James street to Maria street and its intersection with the side-road. Polling place at the Town Hall.

**PART I.—Persons entitled to Vote at BOTH Municipal Elections and Elections to the Legislative Assembly.**

Roll No.	NAME.	Concession or Street.	No. of Lot or Part Lot.	Other Description.	○
J 15	Avery, Wm	N Centre	pt 45	F	1
J 16	Avery, Richard	S Front	pt 21	T	1
J 20	Ashwell, George	N Centre	48, 49	F	1
J 23	Andrews, C M	N Centre	S of 51	T	1
J 24	Alexander, James	S Front	pt S	T	1
J 26	Adams, J S	N Front	pt U	T	1
619	Andrews, Rev A	N North	pt 12	F	1
301	Adamson, James	N Centre	S, T	F	1
J 32	Black, John	N Centre	48, 49	F	1
J 33	Barber, J W	N Front	pt 7	H	1
J 34	Bettridge, W Dr	N Front	9, 10	F	1
J 35	Banks, Thomas	S Front	W hf 15	H	1
J 36	Blatchford, Rev T	S Front	pt 17	H	1
J 85	Brodericht, Werner	N North	8	F	1
J 87	Beswick, Samuel	N Centre	pt 41	H	1
J 88	Bailey, Thos	N Centre	pt 45	T	1
J 98	Barry, John	N Centre	48, 49	T	1
J 99	Barry, James	N Front	pt 1, 2	F	1
104	Bowley, James	S Front	pt 17, 18, &c	T	1
J 107	Bixel, Mathew	N Front	pts T, U, V, W	F	1
J 108	Bixel, Cyrus	N Front	pts T, U, V, W	F	1
110	Barron, G H	N Front	pt 5	T	1
301	Bartlett, Frank	N Centre	pt S, T	F	1
J 520	Bryans, Wm	N Centre	pt 44	F	1
521	Bogue, Thos	N Centre	pt S, T, U	F	1
759	Bond, Isaac	N Centre	pt 47	F	1
170	Coglan, Richard	N Centre	E hf V	T	1
J 175	Cummings, John	S Front	9 of 24	T	1
J 182	Cox, James	S Front	12 of 24	F	1
J 184	Crealy, Truman	S Front	W pt T	T	1
J 185	Clark, W G	S Front	pt V	T	1
J 190	Campbell, T M	N Front	pt 6	T	1
J 191	Crispin, W T	S Front	E pt 21	T	1
J 191	Crispin, W T	S Front	E pt 21	F	1
191	Crispin, Thomas	S Front	pt 7, &c	F	1
193	Collins, W G	N Front	pt 16	H	1
197	Cameron, D M, M P.	Kittredge, avenue, &c		H	1
198	Clarke, J R	N Front	pt W	T	1
J 201	Cook, S P	S Front	pt 18	H	1
232	Dingman, A	N North	pt 12	H	1
233	Degroat, James	N North	W one-third 8	F	1

Roll No.  
 J 235...1  
 J 235...1  
 J 239...1  
 J 240...1  
 241...  
 J 242...  
 J 243...  
 J 245...  
 J 247...  
 J 248...  
 J 249...  
 J 251...  
  
 268...  
 J 276...  
 J 277...  
 889...  
 899...  
  
 291...  
 J 301...  
 J 303...  
 304...  
 309...  
 J 315...  
 804...  
  
 J 350...  
 J 355...  
 J 356...  
 J 357...  
 J 358...  
 351...  
 J 362...  
 J 369...  
 J 928...  
  
 J 436...  
 436...  
 925...  
 437...  
 J 438...  
 J 439...  
 J 447...  
 797...  
 251...  
  
 J 470...  
 J 475...  
 J 475...



POLLING SUB-DIVISION No. 3.

11

Roll No.	NAME.	Concession or Street.	No. of Lot or Part Lot.	Other Description.	O
J 235	Dubois, Joseph	N Centre	pt 43	H	1
J 235	Dubois, John	N Centre	pt 43	F	1
J 239	Dingman, W S	N Centre	48, 49	T	1
J 240	Dyas, W J	S Front	pt T	T	1
241	Dickenson, Richard	S Front	pt Arcade	T	1
J 242	Diprose, Robert	S Front	pt Arcade	T	1
J 243	Foreman, Wm	S Front	pt Arcade	T	1
J 245	Dawson, Wm	N Front	pt W, X	T	1
J 247	Dumbrill, Richard	N Front	pt W	T	1
J 248	Nugent, Edmond	N Front	pt W	T	1
J 249	Dewar, Wm	N Front	19	T	1
J 251	Diggins, J C	S Front	pt U	T	1
268	Edwards, Richard	N Front	W pt 3	F	10
J 276	Edwards, H F	N Front	E pt V	T	1
J 277	Cross, Wm	N Front	E pt V	T	1
889	English, John	N Front	pt X	F	1
889	English, James	N Front	pt X	F	1
291	Fawcett, Charles	con 4	pt 22	F	1
J 301	Fitzpatrick, Thos	N Centre	S, T	H	1
J 303	Fitzpatrick, P C	N Centre	pt 47, 48	F	1
304	Fullerton, James	N Centre	pt 48, 49	H	1
309	Fawcett, W F	Kittredge avenue	13, 14, 15, 17, 18	T	1
J 315	Foreman, Wm	S Front	17, 18	T	1
804	Francis, G M	S Front	pt T	F	1
J 350	Graham, Dougald	N Centre	pt 48, 49	T	1
J 355	Goodwin, Abraham	S Front	V	T	1
J 356	Grant, W H	S Front	pt Arcade	T	1
J 357	Geddes, Wm	N Front	pt U	T	1
J 358	Geddes, J R	N Front	pt U	T	1
351	Going, C E	S Front	pt 1, 2	T	1
J 362	Gott, Wm	S Front	pt 21	T	1
J 369	Grist, Charles	S Front	23	F	1
J 928	Gallivan, Timothy	con 10	pt 13	F	1
J 436	Harrison, T F	N Front	Road lot	T	1
436	Harrison, F L	N Front	Road lot	F	1
925	Harrison, John	con 4	pt 22	F	1
437	Hanley, J H	S Front	pt 22	T	1
J 438	Hamby, John	N Front	pt 7	T	1
J 439	Fletcher, W D	N Front	pt 7	T	1
J 447	Hopwood, Thos	N Front	pt U, 2nd flat	T	1
797	Harvey, Wm	S Centre	77, 78	F	9
251	Howard, George	S Front	pt U	F	18
J 470	Irwin, John	Salary			
J 472	Ivor, John	N Front	1	T	1
J 473	Ivor, David	N Front	1	T	1

Roll No.	NAME.	Concession or Street.	No. of Lot or Part Lot.	Other Description.	○
J 463	Jay, Chas C	N Centre	44	H	1
465	Jones John	N Centre	pt S, T	H	1
J 474	Johnston, Alex	Kittredge avenue	27, 23	F	1
491	Kittredge, A H	S Centre	pt 74	F	1
922	Knaggs, J	N Front	E hf 15	F	21
J 516	Large, Henry	N North	pt 12	H	1
J 517	Legallec, Thos	S North	pt 7	F	1
J 521	Levett, Alex	N Centre	pt S, T	H	1
530	Lee, James H	N Front	pt T	T	1
J 531	Letzgas, Joseph	N Front	pt U	T	1
J 532	Learoyd, A D	N Front	W pt V	T	1
J 533	Reid, J B	N Front	W pt V	T	1
533	Learoyd, Rev John	N Front	W pt V	F	1
J 534	Lenfestey, John jr	N James	pt S, T	F	1
J 535	Lauler, J E	N Front	20	F	1
536	Lindsay, W B	N Front	12	F	1
J 537	Lenfesty, T A	Income			
23	Loughead, James	N Centre	8 of 51	F	1
614	McKellar, John	N Centre	50, 51	F	15
J 617	McIntyre, Patrick	N North	9	F	1
620	McBride, Wm	N North	12	F	1
624	Miller, Robert	N Centre	pt 44	H	1
624	Meekison, Andrew	N Centre	pt 44, &c	F	1
625	Mallon, John	S Centre	74	F	1
628	Mitchell, Alex	N Centre	pt S, T	H	1
J 626	McKellar, Malcolm	S Centre	75	F	1
J 631	Morrison, Peter	N Front	pt V	T	1
J 634	Macrault, J S	S Front	pt Arcade	T	1
J 635	Parker, James	S Front	pt Arcade	T	1
J 639	McLeay, Murdo	N Front	E pt W	T	1
J 640	McLaren, Andrew	N Front	pt W	F	1
J 641	Meek, F W	N Front	pt X	T	1
J 642	Meek, W H	N Front	pt X	T	1
J 645	Murray, W H	N Front	pt 1	F	1
J 647	Matthews, Philip H	N Front	pt X, 2nd flat	T	1
649	Moore, Isaac	S Front	19	F	1
642	Moore, Wm C	N Front	pt X	F	1
652	Maldon, John S	N Centre	pt 46	H	1
J 672	McNeil, David	N Front	pt R	T	1
J 673	Moore, W H	N Front	pt 5	T	1
J 674	Campbell, T M	N Front	pt 5	T	1
675	McLarty, Robert	N Front	pt 5	F	1
J 676	McDonald, D A	S Front	pt 14	H	1
J 679	Manson, James	N Front	pt 2, &c	F	1
680	McEwen, George	S Front	pt 18	H	1
686	McCandlass, J W	N Centre	pt V	H	1
87	McPherson, John	N Centre	W pt 41	F	1
170	Manning, John	N Centre	E hf V	F	1
941	McIntyre, Hugh	N Front	E hf 3	F	1
704	Nichols, John	S North	pt 11	H	1

Roll No.  
709  
J 710  
J 711  
J 712  
940

240  
728  
J 729

J 759  
J 760  
J 765  
J 767  
35  
190  
277

792  
J 797  
797  
J 800  
801  
J 804  
J 805  
J 806  
J 807  
J 812

87  
J 874  
J 875  
88  
88  
J 88  
J 88  
89  
J 89  
J 89

J 92  
92  
6

J 9  
J 9  
J 9

POLLING SUB-DIVISION No. 3.

13

Roll No.	NAME.	Concession or Street.	No. of Lot or Part Lot.	Other Description.	O
H ... 1	709.. Noble, James.....	N Front	pt X	T	1
H ... 1	J 710.. Noble, D C.....	N Front	pt X	T	1
F ... 1	J 711.. Noble, Joseph .....	N Front	pt X	T	1
F ... 1	J 712.. Napper, Charles .....	N Front	pt 5	F	1
F ... 1	940 ..Nugent, Edmund .....	S Centre	72	F	1
F ... 1	240.. Orchard, George .....	S Front	W pt T	F	1
F ... 21	728.. O'Dwyer, Patrick.....	N Front	part X	T	1
H ... 1	J 729 O'Kcefe, Patrick .....	N Front	part 2	F	1
F ... 1	J 759 ..Paine, John .....	N Centre	part 47	H	1
F ... 1	J 760..Paine, Benjamin .....	N Centre	part 41	H	1
H ... 1	J 765. Parker, J W .....	N Centre	part 40	F	1
T ... 1	J 767. Putnam, G H .....	N Front	part 6	T	1
T ... 1	J 767. Putnam, G H .....	N Front	part 6	T	1
T ... 1	J 767. Putnam, G H .....	N Front	part 6	T	1
F ... 1	35.. Patterson, Samuel .....	S Front	part 15	F	1
F ... 1	190 ..Parker, Harvey .....	N Front	part 6	F	1
F ... 1	277...Pool, Irving .....	N Front	part V	F	1
F ... 1	792...Rothwell, Thos.....	Kittredge sy	22	F	1
F ... 15	J 797.. Roach, B G .....	S Centre	77, 78	T	1
F ... 1	797 .. Roach, G B .....	S Centre	77, 78	F	1
F ... 1	J 800 .. Rose, Hugh .....	N Centre	part 48, 49	F	1
H ... 1	801 .. Ray, Samuel .....	N Centre	50, 51	F	1
F ... 1	J 804...Rapley, L F .....	S Front	E part T	T	1
F ... 1	J 805 Rapley, Wm & Co.....	N Front	part 1	T	1
H ... 1	J 806 ..Robertson, John .....	S Front	part 22	T	1
F ... 1	J 807 ..Rowland, Edward jr .....	N Front	E part 7	T	1
T ... 1	J 812 Richardson, Wm.....	S Front	W part 16	T	1
T ... 1	871...Smith, Charles .....	con 4	E Maria	F	1
T ... 1	J 873.. Still, Jasper .....	N Centre	W half U	T	1
F ... 1	J 879 .. Sutherland, Robert .....	N Centre	48, 49	F	1
T ... 1	883 .. Scatcherd, E W .....	Kittredge sy	21, 22, 55	F	1
F ... 1	884 .. Scott, John .....	S Front	part T	H	1
T ... 1	J 885 .. Snell, W F.....	S Front	part U	F	1
F ... 1	J 886 ..Springer, Menno .....	S Front	part Arcade	T	1
F ... 1	J 888 Shibley, S W .....	N Front	X	T	1
H ... 1	891 .. Stevenson, R A .....	Income			1
T ... 1	J 893 ..Stevenson, Alex .....	N Front	part 6	F	1
T ... 1	J 897 ..Scott, C G.....	N Front	part V, 2nd flat	F	1
F ... 1	J 922...Taylor, Henry .....	S Front	E half 15	H	1
H ... 1	923 Tinkler, Wm.....	con 4	E Maria, 22	H	1
H ... 1	639 ..Thompson, A .....	N Front	E pt W	F	1
F ... 1	J 936 ..Vail, W A .....	N Front	part V, &c	T	1
F ... 1	J 937 .. Vail, J B.....	N Front	part V, &c	T	1
H ... 1	J 940 Vahey, Nathaniel.....	S Centre	72	H	1

Roll No.	NAME.	Concession or Street.	No. of Lot or Part Lot.	Other Description.	○
J 941	Vokes, J T	N Front	E half 3	T	1
J 942	Vary, D W	N Front	8	F	1
J 978	Windlow, John	N North	11	H	1
979	Waite, David	S North	12	F	1
J 980	Waite, Stephen	S North	12	F	1
981	Walters, Reuben	N Centre	44	H	1
996	Wright, James	S Front	T	F	1
999	Woodbury, Edwin	S Front	Queen's	T	1
J 676	Williams, Michael	S Front	part 14	F	1

*Part II—Persons entitled to Vote at Municipal Elections ONLY.*

28	Auld, Euphemia	N Front	part 5	F	1
193	Collins, Ellen	N Front	part 7	F	1
656	Fletcher, Clarine	con 10	part 13	F	1
354	Granville, Mary	S Front	part V	T	1
359	Geddes, Mary	N Centre	part 45	F	1
441	Herbert, Elizabeth	N Front	part 7	T	1
487	Kilty, Leafie	N Centre	part 45	H	1
520	Lloyd, Anna	N Centre	44	F	1
617	Mathews, Jane	con 4	part 22	F	1
671	Mills, Isabella	S Front	part S	T	1
677	Manners, Mary	S Front	part 14	H	1
707	Newton, Eliza	N Front	part V	T	1
772	Pearce, Jane	N Front	Albert Hall	F	1
800	Rcse, Willhelmina	N Centre	48, 49	F	1
997	Willis, Maggie	S Front	part V	H	1

*Part III. the same as Part I.*

Comprising  
tre to

**PART**

Roll No.	
6	A
J 7	A
10	A
J 17	A
J 22	A
898	A
450	A
44	F
J 45	F
49	F
J 50	F
51	F
56	F
J 61	F
81	F
89	F
J 93	F
J 94	F
J 97	F
44	F
388	F
598	F
J 120	F
121	F
J 122	F
J 123	F
J 124	F
J 125	F
J 126	F
J 127	F
J 147	F
J 131	F
J 132	F
140	F
J 149	F
151	F
J 173	F
194	F
185	F
203	F
433	F
501	F
558	F

### Polling Sub-Division No. 4,

Comprising all that part of the Town lying West of Caradoc Street, South of Centre to Frank Street, thence South of James Street and East of Richmond and McKellar Streets. Polling Place at the High School.

#### PART I.—Persons entitled to Vote at BOTH Municipal Elections and Elections to the Legislative Assembly.

Roll No.	NAME.	Concession or Street.	No. of Lot or Part Lot.	Other Description.	C
	6.. Anderson, J W	S & K sy	W hf 107	H	1
J	7.. Adair, Benjamin	S & K sy	84	F	1
	10.. Ash, John	S James	pt 200, 202	F	9
J	17.. Armstrong, T L	S James	pts U, V	F	1
J	22.. Althourse, M W	N Metcalfe	205, 206	H	1
	898.. Alison, P J	S & K sy	67, 68	F	1
	450.. Alison, B H	Reid sy	part 14	F	1
	44.. Brown, Alfred	Reid sy	S R R, 15	H	1
J	45.. Barclay, Wm	S & K sy	133	F	1
	49.. Billington, George	S & K sy	38	H	1
J	50.. Ballantyne, R A	S & K sy	W half 17, 18	F	1
	51.. Blackwell, John	S & K sy	E half 93	H	1
	56.. Brown, James	J & W sy	W half 15	H	1
J	61.. Barron, Edwin	S & K sy	69, 70	H	1
	81.. Buck, Wm	S Centre	70	F	1
	89.. Burkholder, Henry	N James	E hf V	H	1
J	93.. Black, J V	S James	part 200, 202	F	1
J	94.. Bishop, Wm	N James	pts 109, 110, 111	T	1
J	97.. Bond, John	S Centre	79, 80	F	1
	44.. Brown, John	Reid sy	S R R, 15	F	1
	388.. Bennett, Arthur	S & K sy	6, 7	F	5
	598.. Bell, Richard	S Albert	12	F	1
J	120.. Cutler, Jacob	Reid sy	S R R, pt 6	F	1
	121.. Campbell, John	E, McK & McR sy	4, 5	H	1
J	122.. Campbell, Thos	S & K sy	141	F	1
	123.. Cirmichael, Peter	S & K sy	142	F	1
J	124.. Campbell, James	S & K sy	127, 128	F	1
J	125.. Chalmers, James	S & K sy	99	T	1
	126.. Cornell, D B	S & K sy	59	T	1
J	127.. Campbell, D B	B, McK & McR sy	9, 10	T	1
J	147.. Campbell, Jas M	S & K sy	36, 37	F	1
J	131.. Carson, Samuel jr.	S & K sy	34	H	1
J	132.. Crout, Geo W	S & K sy	98	T	1
	140.. Cawthrop, Thos	N Metcalfe	part 1	F	1
J	149.. Collins, Isaac	N Metcalfe	V 204	H	1
	151.. Crone, Wm	S Albert	34, 35, &c	F	1
J	173.. Corkindale, L	10, pt 12	4, 8	F	1
	194.. Cornell, D B	Elevator	R R grounds	T	1
	185.. Mitchell	Elevator	R R grounds	T	1
	203.. Cowan, Thos	S Centre	pt 80	F	1
	433.. Colter, Charles	S Centre	69	F	1
	501.. Carruthers, Andrew	S & K sy	90, 91	F	1
	558.. Currie, Wm	Reid sy	S hf 8	F	1

Roll No.	NAME.	Concession or Street.	No. of Lot or Part Lot.	Other Description.	○
J 212...	Donley, Patrick	E McKellar	4, 5	F	1
J 213...	Donley, James	E McKellar	4, 5	F	1
J 224...	Dell, Benj F	S & K sy	113 to 117	F	1
J 236...	Davis, Frederick	S Centre	W pt T	H	1
121...	Dingman, John	E, McK and McR sy	4, 5	F	1
950...	Dudley, George	Reid sy	W part 6	F	1
61	Elliott, J B	S and K sy	69, 70	F	1
254	Ellis, John	D, McK and McR sy	6, 7	H	1
J 285	Folks, Frank	Reid sy	S R R, 5	F	1
J 286	Farrow, Robert	S and K sy	61	F	1
297	Frank, Chas G.	Beattie sy	6 to 17, 22, 25	F	1
326	Grant, Thos	S R R, Reid's sy	S hf 6	F	14
J 327	Getty, Joseph	Kittridge sy	pt 73	F	1
J 328	Gooderham, Thos	Kittridge sy	W hf 73	F	1
J 330	Gordon, Thos	S and K sy	63, 64	F	1
331	Gallivan, Timothy	S and K sy	29	H	1
J 348	Gough, James	S James	200, 202	T	1
556	Grant, Thos	Reid sy	S hf 10	F	1
J 377	Hill, Thos	Reid sy	13, 14	F	1
J 379	Harris, James	S and K sy	124, 125	F	1
382	Harrison, Thos	S and K sy	103	F	1
J 384	Hurd, N C.	B, McK and McR sy	6, 7	F	1
J 385	Hardy, Wm	S and K sy	81, 82, 83	F	1
386	Harnett, Wm	S and K sy	89	F	1
391	Humble, John	S Metcalfe	3	H	1
J 399	Hill, Benjamin	S Metcalfe	57	H	1
J 401	Hartson, Charles	N Metcalfe	pt T	H	1
J 401	Haldane, Robert	N Metcalfe	pt T	F	1
418	Hungerford, Beecher	S Centre	71	H	1
J 428	Hoskin, F T	N James	pt 109	T	1
J 429	Hoskin, T F	N James	pt 109	T	1
J 430	Hoskin, G B	N James	pt 109	T	1
J 433	Hill, David	S Centre	69	H	1
440	Hambly, John	S and K sy	32, 33	F	1
J 444	Hart, John	Reid sy	pt 6	H	1
455	Henry, Richard	J and W sy	16	F	1
919	Healy, James	S Centre	74	F	1
J 464	Irvine, Samuel	N James	pt S, T	H	1
450	Jervis, Edward	Reid sy	pt 14	H	1
451	Johnson, H D	C, McK & McR sy	8, 9, 10	F	1
J 452	Jeffrey, David	S & K sy	47, 48, 49	H	1
J 455	Jackson, Thos	J and W sy	16	H	1

Roll No.  
 J 476 ..  
 J 488 ..  
 481 ..  
 726 ..  
  
 J 498 ..  
 J 500 ..  
 J 501 ..  
 J 511 ..  
 J 511 ..  
 J 538 ..  
 J 539 ..  
 540 ..  
 420 ..  
  
 J 555 ..  
 J 556 ..  
 558 ..  
 J 559 ..  
 562 ..  
 J 563 ..  
 J 564 ..  
 J 561 ..  
 J 567 ..  
 J 569 ..  
 J 572 ..  
 J 573 ..  
 J 575 ..  
 J 576 ..  
 596 ..  
 600 ..  
 605 ..  
 J 627 ..  
 J 631 ..  
 J 638 ..  
 J 660 ..  
 J 687 ..  
 J 688 ..  
 578 ..  
 J 665 ..  
  
 69 ..  
 J 69 ..  
 J 67 ..  
 70 ..  
 J 70 ..  
 J 70 ..  
 47 ..  
 56 ..  
 84 ..  
  
 J 7 ..  
 J 7 ..  
 J 7 ..

POLLING SUB-DIVISION No. 4.

Roll No.	NAME.	Concession or Street.	No. of Lot or Part Lot.	Other Description.	O
J 476	Koppleberger, H B	S Centre	pt 70	H	1
J 488	Ketchum, H E	S Albert	36	F	1
481	Knight, Benjamin	S and K sy	77	F	1
726	Kettridge, A H	S Centre	pt S	F	1
J 498	Lethbridge, John	S and K sy	135	F	1
J 500	Large, Wm	D, McK and McR sy	3 to 5, 9, 10	F	1
J 501	Lea, Wm	S and K sy	90, 91	H	1
J 511	Lamont, David	S Albert	29	H	1
J 511	Loughead, J S	S Albert	29	F	16
J 538	Lewis, D D	S and K sy	74	H	1
J 539	Lucas, W J	S Albert	37	H	1
540	Laird, W P	N Centre	V, 81	H	1
420	Lindsay, W B	S Centre	pt S	F	1
J 555	Murray, J W	Reid's sy	pt 15	F	1
J 556	Morley, John W	Reid's sy	S hf 10	H	1
558	McPhee, Archibald	Reid's sy	S hf 8	H	1
J 559	McIntyre, Peter H	Kettridge sy	5, 6	F	1
562	McPhee, Donald	S and K sy	144	H	1
J 563	Mansfield, James	S and K sy	120, 121	H	1
J 564	McReth, George	S and K sy	62	F	1
J 561	McNeice, Thos	S and K sy	42, 107	F	1
J 567	McEwen, Robert	S and K sy	78	H	1
J 569	McKeigan, Alex	S and K sy	20	F	1
J 572	McPhail, Daniel	S and K sy	73	F	1
J 573	McIntyre, John	Reid sy	3	F	1
J 575	Main, Henry	Reid sy	4	H	1
J 576	McGowan, Robert	S and K sy	96, 98	H	1
596	Malone Brothers	N English	10	T	1
600	McAdam Thos Rev.	S Albert	26, 27	T	1
605	McGibbon, Finlay	S Albert	38, 39	T	1
J 627	Mitchell, John	S Centre	pt T	F	1
J 631	Morrison, Peter	S and K sy	153, 154	F	1
J 638	Mann, G A	Reid's sy	pt 6	F	1
J 660	McKellar, John	S Centre	pt 79	H	1
J 687	McBride, John	N Metcalfe	S	T	1
J 688	McBride, Samuel	N Metcalfe	S	T	1
575	McIntyre, Hugh	Reid's sy	S R R. 4	F	1
J 665	Morley, J W	N James	109, 110	F	1
696	Northcot, Joseph	Reid sy	pt 15	T	1
J 697	Nicholls, Edward	Kettridge sy of 11	65, 67	F	1
J 679	Nichols, Edward	Reid sy	pt 6	F	1
700	Nicholson, Robert	N Metcalfe	52	F	1
J 705	Nicholson, Edward	N James	S, T	H	1
J 706	Nicholls, Thos	N James	W hf V	F	1
476	Nugent, E W	S Centre	pt 70	F	1
567	Napper, Charles	S and K sy	78	F	1
845	Noble, John	J and W sy	23, 25	F	1
J 716	O'Dwyer, Edward	C, McK and McR sy	1 to 2	F	1
J 717	Orvis, Myron	S and K sy	71	H	1
J 720	Ogden, John	S Metcalfe	2	F	1

Roll No.	NAME.	Concession or Street.	No. of Lot or Part Lot.	Other Description.	○
J 722	O'Neil, John H	J and W sy	53, 54	F	1
J 723	Ogden, Wm	S Albert	28	F	1
726	Orr, James	S Centre	pt S	H	1
741	Perry, Nelson	Reid's sy	N hf 8	H	1
742	Petch, James	S and K sy	76	F	1
744	Pearce, Henry	E and K sy	93	H	1
J 747	Plaxton, Albert	N Metcalfe	pt 57	H	1
J 757	Parsons, Edwin	N James	109, 110	T	1
766	Pincombe, Richard	Reid sy	S R R, 2	T	1
94	Prangley, George	S James	109, 110, 111	F	1
131	Parke, Edward	S and K sy	34	F	1
J 777	Robinson, John	S and K sy	100	F	1
J 788	Richardson, Robt F	S Albert	30	O	1
791	Ross, Hon G W	S and K sy	150, 151, 152, &c	F	1
J 811	Read, Alex	N James	197, 198, 199	F	1
J1029	Rapley, Henry	N James	U	H	1
125	Robinson, Albert	S and K sy	99	F	1
127	Rothwell, Thos	B, McK and McR sy	9 to 10	F	1
418	Scott, C G	S Centre	71	F	1
J 832	Sells, John	Reid sy	pt 5	H	1
832	Sells, David	Reid sy	pt 5	F	1
834	Stoddart, Thos	D, McK and McR sy	1, 2	H	1
J 836	Stevens, B F	E McKellar	11, 12, 13	F	1
J 837	Stevens, John W	E McKellar	11, 12, 13	F	1
845	Saulsbury, John	J and W sy	23, 25	F	1
846	Sessions, Wm	J and W sy	E hf 15	F	1
854	Seymcur, Henry	S Metcalfe	56	H	1
870	Sanderson, Rev Dr	S Centre	79, 80	O	1
872	Salsbury, John	S Centre	73	F	1
J 898	Small, J S	S and K sy	67, 68	T	1
348	Seaton, John	S James	pt 200, 202	F	1
452	Shepherd, Wm	S and K sy	47, 48 49	F	1
888	Stokoe, Bartholmew	N Metcalfe	pt U	F	1
22	Thompson, Archy	N Metcalfe	205, 206	F	1
902	Tomlinson, Wm	Brattie sy	32	F	1
J 903	Thody, Elijah	S and K sy	25	H	1
904	Topp, Abraham	S and K sy	27, 28	F	1
J 907	Trelfa, Wm	S and K sy	3 to 5, 11 to 14	O	1
J 919	Tomlinson, C S	S Centre	pt 74	H	1
J 911	Todd, W E	N Metcalfe	E hf U	H	1
666	Thom and Doherty	N James	109, 110	H	18
932	Vanstaden, W G	J and W sy	17 to 21	F	1
933	Richardson, Thos	J and W sy	17 to 21	F	1
949	Waltham, John	Reid sy	14, 15	F	1
950	Wiles, Thos	Reid sy	pt 6	H	1

Roll No.	Part
J 951	W
952	W
J 953	W
J 953	W
955	W
960	W
J 982	W
J 983	W
995	W
96	W
539	W
J1010	Z
48	I
96	I
563	
128	
130	
202	
254	
378	
381	
383	
388	
393	
420	
441	
560	
561	
565	
568	
597	
598	
540	
1030	
6	
740	
776	
788	



POLLING SUB-DIVISION No. 4.

19

Roll No.	NAME.	Concession or Street.	No. of Lot or Part Lot.	Other Description.	P. O.
J 951	Wallace, Wm	Reid sy	S hf 7	H	1
952	Walker, James	10, pt 12	7 to 10, &c	F	1
J 953	Wilkinson, Wm	B, McK and McR sy	8	F	1
J 953	Webb, Joseph	S and K sy	65, 66	F	1
955	Woods, Charles	S and K sy	72	F	1
960	Wright, George	S Metcalfe	pt 3	H	1
J 982	Whitehead, J P	S James	E hf T	H	1
J 983	Woods, James	S James	V & 103	H	1
995	Worthington, A I	S and K sy	94, &c	F	1
96	Winters, Thos	N James	109, 110	F	1
539	Wilson, Joseph	S Albert	37	F	1

J1010 ..Zavitz, Thos .....S and K sy..... 101.....F .... 1

*Part II—Persons entitled to Vote at Municipal Elections ONLY.*

48 ..Buttery, Mary .....S and K sy..... 136, 140.....F .... 1  
 96 ..Bradley, Mary .....N James ..... 109, 110.....F .... 1

563 ..Connechy, Jane .. ..S and K sy ..... 120, 121 .....F .... 1  
 128 ..Collins, Mary .....S and K sy..... 39 .....F .... 1  
 130 ..Crone, Ann .....S and K sy..... 79 .....F .... 1  
 202 ..Cowan, Alice..... S Centre .....pt 80.....F .... 1

254 ..Ellis, Mary .....D, McK and McR sy.....6, 7 ..... F .... 1

378 ..Hardy, Eliza .....Kettridge sy .....pt 68.....F .... 1  
 381 ..Harris, Mary .....S and K sy..... 110, 111, 112 .....F .... 1  
 383 ..Howe, Kate .....C, McK and McR sy.....3, 4, 5 .....F .... 1  
 388 ..Hawley, Mary .....S and K sy.....6, 7.....H .... 1  
 393 ..Holden, Eliza .....J and W sy.....pt 24 .....H .... 1  
 420 ..Hodgkinson, Catherine . S Centre .....pt S .....H .... 1  
 441 ..Howard, Annie.....N Centre .....72 .....H .... 1

560 ..McAlpin, Maria ... S and K sy ..... 132.....F .... 1  
 561 ..McNeice, Jane .....S and K sy .....pt 107 .....H .... 1  
 565 ..McDougal, Nancy ...S and K sy ..... 102.....F .... 1  
 568 ..Moore, Ann .....S and K sy ..... 24 .....F .... 1  
 597 ..McTaggart, Jane.....S Metcalfe .....57 .....F .... 1  
 598 ..McNeil, Nancy.....S Albert ..... 32 .....F .... 1  
 540 ..McKellar, Adeline . N Centre .....V, 81.....F .... 1  
 1030 ..Moore, Mary .....S James .. ..pt T .....H .... 1

6 ..Orr, Mary .....S and K sy ..... pt 107 .....F .... 1

740 ..Pegley, Matilda ..... Reid sy ..... 9, 10 .....F .... 1

776 ..Rowland, Mary..... S and K sy ..... 106.....F .... 1  
 788 ..Richardson, Fanny ..S Albert ..... 39 .....F .... 1

Roll No.	NAME.	Concession or Street.	No. of Lot or Part Lot.	Other Description.	○
51	Stoops, Mary	S and K sy	93	F	1
126	Williams, Jane	S and K sy	59	F	1
975	Woodhall, Mary A	Reid sy	pt 6	F	1

*Part III. the same as Part I.*

**Polling Sub-Division No. 5,**

Comprising all that part of the Town lying East of Caradoc Street and North of Metcalfe Street Polling Place at Colborne Street School House.

*PART I.—Persons entitled to Vote at BOTH Municipal Elections and Elections to the Legislative Assembly.*

994	Alexander, James	N English	13	F	1
1032	Ayre, Joshua	con 4	pt 23	T	1
J 58	Banghart, James	A and K sy	38, 39	F	1
J 59	Best, Jacob	A and K sy	S hf 38, 39	F	1
79	Black, John	} Kettridge sy	29 to 33	F	1
80	Black, A N C		29 to 33	F	1
J 90	Barnes, John	E Caradoc	pts 4, 5	F	1
J 92	Babb, Wm	E Colborne	pt 5	T	1
J 102	Banghart, James	S Front	G	F	1
J 103	Brown, Donald	S Front	pt F	T	1
1028	Brown, John	E Caradoc	pt 1	F	1
J 109	Bixel, Cyrus	E Caradoc	2	T	1
205	Bishop, Wm	W Colborne	pt 3	F	1
145	Bailie, Hugh	A and K sy	68	F	1
650	Brown, John	E Caradoc	1	F	1
111	Carruthers, Andrew	N Front	rear G, H, I	F	1
J 142	Clark, Samuel	A and K sy	53	H	1
143	Clark, Henry	A and K sy	43	H	1
J 144	Collins, Thos	A and K sy	50	H	1
J 145	Collins, Edward	A and K sy	68	H	1
J 147	Cooper, Wm	N Metcalfe	11, pt 10	H	1
171	Coy, Richard	E Caradoc	S hf 9	F	1
J 173	Cordindale, L	E Colborne	8	H	1
177	Cornyn, Rev Thos	S Front	D, E, F, &c	O	1
J 179	Cornell James	S Front	E hf K	H	1
J 181	Campbell, F F	S Front	M	F	1
120	Cox, James	con 4	pts 24, 25	F	1
189	Cameron, John	A and K sy	64	H	1
J 183	Cummings, John	S Front	E pt R	T	1
J 205	Craik, Alex	S Front	W 3 N	T	1

Roll No.  
 J 201...  
 206...  
 394...  
 445...  
 396...  
  
 J 219...  
 J 237...  
 J 273...  
 368...  
 426...  
 892...  
  
 J 271...  
 272...  
 273...  
 274...  
 280...  
 J 961...  
  
 290...  
 J 302...  
 J 305...  
 J 306...  
 312...  
 317...  
  
 J 339...  
 J 340...  
 341...  
 J 349...  
 J 367...  
 J 368...  
  
 J 394...  
 J 396...  
 J 402...  
 411...  
 J 422...  
 423...  
 J 424...  
 J 425...  
 426...  
 43...  
 44...  
 43...  
 51...  
 84...  
 85...  
 106...



Roll No.	NAME.	Concession or Street.	No. of Lot or Part Lot.	Other Description.	F. O
J 469.	Irvine, Thos	N Front	pt S	F	1
J 467.	Johnston, John	E Colborne	4	H	1
J 468.	Johnston, P H	W Colborne	2	F	1
525.	James, Joseph	E Caradoc	10, 11	F	1
491.	Keefer, T H	W Colborne	9, 10, 11, 13, 14	F	1
J 491.	Kettridge, A H	N Front	W hf Q	F	1
J 512.	Lawson, Frederick	con 4	pt 22	H	1
522.	Laing, Rev D	E Caradoc	3	T	1
J 524.	Lamon, George	E Caradoc	pt 10, 11	F	1
J 525.	Lamon, W J	E Caradoc	pt 10, 11	F	1
J 529.	Lamotte, George	N Front	pt S	T	1
653.	Lenfestey, John	E Caradoc	N hf 8	H	1
877.	Lindsay, James	E Head	pt 2, 3	F	1
543.	Moore, E J	A and K sy	23	T	1
J 585.	McCormick, John	A and K sy	72	H	1
J 586.	Merrills, Thos	A and K sy	69	F	1
J 587.	Murdock, George	W Arthur	6	H	1
J 629.	Mallon, Thos	N Metcalfe	9	H	1
J 629.	Mallon, John	N Metcalfe	9	F	1
J 650.	Morrow, Wm	E Caradoc	1	H	1
J 349.	Manigault, Wm	E Head	pt 4, 5	F	1
654.	McGarvey, John	N Front	O, P	F	1
J 655.	McGarvey, Edward	N Front	O	T	1
J 658.	Murdock, John	E Head	3, 4	H	1
J 659.	Morrow, Frank	E Head	1, & 2	F	1
J 661.	McCallum, Daniel	S Front	W hf K	F	1
662.	McNeil, John	N Front	W hf L	F	1
J 664.	McMillan, Josiah	S Front	E hf O	T	1
667.	Martyn, Joseph T	S Front	pt R, & c	F	1
668.	McColl, Hugh	S Front	pt O	T	1
J 669.	Murdock, Wm	N Front	rear of R, S	F	1
J 690.	Murdock, Wm	E Head	S hf 5	H	1
J 681.	Merrills, Thos	S Front	H	F	1
1031.	Malone, Charles	N English	pt 6, 7	F	1
92.	Mann, Shadrach	E Colborne	5	F	16
306.	O'Callaghan, John	S Front	pt R	F	1
109.	O'Keefe, Patrick	E Caradoc	2	F	1
727.	Ogden, Henry	E Colborne	6	F	1
J 1028.	Poole, A E	E Caradoc	pt 1	H	1
755.	Perry, Robert	S Front	pt R	H	1
756.	Plaxton, Albert	E Caradoc	pt 10	H	1
J 761.	Pike, W H	S Front	R	T	1

Roll No.

J 762

764

766

J 770

J 796

J 802

J 813

814

J 816

821

J 846

J 850

582

851

J 852

J 865

J 866

J 875

J 876

J 877

J 881

J 882

883

890

144

189

1030

J 908

909

J 913

J 918

J 914

J 934

J 961

J 962

J 963

J 964

J 984

J 985

986

987

J 991

991

992

994

Roll No.	NAME.	Concession or Street.	No. of Lot or Part Lot.	Other Description.	○ p.
J 762	Pike, Charles	N Front	pt P, R	F	1
764	Peterson, A E W	A and K sy	pt 67	H	1
766	Pincombe, Richard	con 4	pts 23, 24	F	1
J 770	Pool, Irving	E Colborne	2, 3	F	1
J 796	Rundle, Wm	E Colborne	7	F	1
J 802	Richardson, Wm	S Front	A, B	F	1
J 813	Richardson, L R	con 4	N W pt 23	F	1
814	Rowles, Wm	N Front	E hf L	F	16
J 815	Spurr, L V	N Front	pt P	H	1
821	Shepherd, Geo B	con 4	pt 24	F	1
J 849	Sickles, J R	A and K sy	55, 56	H	1
J 850	Statham, Titus J	A and K sy	62	F	1
585	Sickles, John	A and K sy	72	F	1
851	Sewell, Samuel	A and K sy	W pt 64	H	1
J 852	Snider, Andrew	W Arthur	pt 4, 5	H	1
J 865	Shotwell, J B	con 4	pt 22	F	1
J 866	Statham, Silas	con 4	pt 22	F	1
J 875	Simpson, Wm	E Colborne	1	H	1
J 876	Spriggings, Henry	S Front	pt N	H	1
J 877	Sickles, Edward	E Head	pt 2, 3	H	1
J 881	Statham, Enoch	S Front	pt P	H	1
J 882	Statham, T J	S Front	pt P	H	1
883	Seacherd, E W	N Front	pt S	T	1
890	Seaton, John	S Front	W pt Q, &c	F	1
144	Saxton, John	A and K sy	50	F	1
189	Scandreth, John	S Front	E hf K	F	4
1030	Smith, Richard	N English	6, 7	F	1
J 908	Touzeau, Thos	A and K sy	47 to 49	H	1
909	Tanton, John	A and K sy	5	H	1
J 913	Thompson, J R	5	pt N E 1/2 22	F	1
J 918	Thompson, Wm	E Caradoc	pt 10, 11	F	1
J 914	Thompson, Andrew	con 4	pt 23	F	1
J 934	Vrooman, David	W Colborne	7	F	1
J 961	Wilkinson, W J	S and K sy	45, 46	H	1
J 962	Williams, Roger	S and K sy	65, 66	F	1
J 963	Wilkinson, Isaac	W Arthur	7, 8	F	1
J 964	Walton, George	N Metcalfe	10	H	1
J 984	Wilson, G H	E Colborne	pt 8	H	1
J 985	Wilton, John	E Colborne	pt 5	F	1
986	Winlow, J B	W Colborne	4	F	1
987	Welch, Patrick	E Head	4, etc	F	1
J 991	Wright, Walter	N Front	pt G	H	1
991	Wright, James	N Front	pt G	F	1
992	Woodward, Frank	N Front	pt P	H	1
994	Wiles, Thos	N English	13	H	1

Roll No.	NAME.	Concession or Street.	No. of Lot or Part Lot.	Other Description.	O. P.
J1007	Zavitz, David	A and K sy	63	H	1
J1009	Zavitz, Edward	A and K sy	21, 22	F	1
J1010	Zavitz, Thomas	con 4	pt 22	F	1

*Part II—Persons entitled to Vote at Municipal Elections ONLY.*

180	Campbell, Mary	S Front	M	F	1
312	Crosley, Elizabeth	S Front	part L	F	1
543	Campbell, Sarah	A and K sy	23	F	1
588	Moore, Drusilla	N Metcalfe	9	F	1
611	McGugan, Ann	Kettridge sy	3, 4	F	1
551	McCabe, Emma	E Caradoc	4	H	1
653	McDermitt, Juliette	E Caradoc	part S	H	1
670	McBeth, Jane	N Front	part R	H	1
207	Munn, Keziah C	E Colborne	4	F	1
670	Smith, Emily	N Front	Rear of R	F	1
840	Sifton, Jenima	con 4	part 22	F	1
990	Worsfold, Maria	S Front	W hf L	F	1

*Part III. the same as Part I.*

**Polling Sub-Division No. 6,**

Comprising all that part of the Town lying East of Caradoc Street and South of Metcalfe Street. Polling Place at Caradoc Street School House.

*PART I.—Persons entitled to Vote at BOTH Municipal Elections and Elections to the Legislative Assembly.*

J	1	Adair, John	Richardson plot	2	H	1
J	2	Althouse, A E	E Ellor	3	H	1
J	4	Arseott, George	S Henry	6	F	1
J	5	Anderson, James	E Caradoc	3	F	1
J	9	Adams, John S.	N English	E hf 8	H	1
J	38	Booker, John	Munn's sy	9, 10	T	1
J	40	Barnett, Edward	S English	12	H	1
J	41	Baker, Andrew	S English	4	F	1
J	42	Bravener, George	Blackburn sy	24	F	1
J	43	Bradt, Sylvester	Blackburn sy	13, 14	H	1
J	60	Berdan, John	Blackburn sy	6, &c.	F	1
J	62	Bond, John	Blackburn sy	5	F	1
J	63	Barron, Isaac	Blackburn sy	2	F	1

Roll No. J 6 J 6 J 9 J 10 J 112 J 113 J 114 J 115 J 116 J 118 J 119 J 146 J 176 J 176 185 208 176 726 J 209 J 210 211 J 214 221 240 549 925 252 E 253 E J 279 E J 784 E 281 F 282 F J 283 F J 284 F J 291 Fa 318 Gil J 319 Gil J 320 Gil J 321 Go J 322 Go J 323 Gib J 324 Gov 553 Gar J 370 Han J 371 Har

POLLING SUB-DIVISION No. 6.

Roll No.	NAME.	Concession or Street.	No. of Lot or Part Lot.	Other Description.	O
J 64	Brady, A J	S Concord	9	T	1
J 65	Brown, J W	S and K sy	60	F	1
90	Barnes, John	S Metcalfe	2	F	1
101	Black, James	S Canaan	19 to 22	T	1
112	Coons, Roberts	B, Gregory sy	4	H	1
J 113	Campbell, Wm	con 10	pt 13	T	1
J 114	Calcut, Chester	E Ellor	7	F	1
115	Condon, Thos	W Ellor	11, 12	F	1
J 116	Cockburn, Alex	Blackburn sy	27	T	1
118	Carr, Benjamin	Blackburn sy	16	H	1
J 119	Cooper, Charles	con 10	pt 12 to 38	H	1
J 146	Cross, Wm	W Blackburn sy	Plot	H	1
J 176	Cummings, Wm	N Bella	pts 27, 28	H	1
185	Clark, W G	Blackburn sy	1	F	1
208	Calkins, John	N English	14	T	1
176	Campbell, Malcolm	N Bella	27, 28	F	1
726	Collins, Thos	E Ellor	pt 9	F	1
J 209	Douglas, Wm	10, pt 12	lot 57	H	1
J 210	Deo, Daniel	W Ellor	N hf 20	F	1
211	Deo, James	N English	pt 7	H	1
J 214	Donley, Patrick	N English	W 3 6	F	1
221	Daniels, Wm jr	S Concord	12	H	1
240	Dyas, W J	E Caradoc	12	F	1
549	Drew, James	S English	8	F	1
325	Duncan, James	10	pt 13	F	1
252	Elwick, George	Munn's sy	15	F	1
253	Emmons, John	Munn's sy	25	F	1
J 279	English, J H	con 10	pt 12	H	1
J 784	Ellis, John	S Metcalfe	Plot	F	1
281	Frank, Lucian	B, Gregory sy	5	F	1
282	Ferguson, James	N Henry	14	F	1
J 283	Fortner, Lewis	Blackburn sy	S hf 9, 10	F	1
J 284	Fortner, George	Blackburn sy	N hf 9, 10	F	1
J 291	Fawcett, Charles	E Elm	26	F	1
318	Gill, Moses	Richardson plot	1	F	1
J 319	Gill, Michael	E Ellor	1, 2	F	1
J 320	Gill, John	W Ellor	15	F	1
J 321	Gooderham, Ezekiel	W Ellor	14	F	1
J 322	Gooderham, James	S English	5	F	1
J 323	Gibson, John W	Blackburn sy	36 to 38	F	1
J 324	Gowric, John	Blackburn sy	34, 35	F	1
553	Gardner, Robert	E Caradoc	2	F	5
J 370	Hambly, John	con 10	pt 13	F	1
J 371	Harris, Adam	Kettridge sy	10, pt 12	F	1

Roll No.	NAME.	Concession or Street.	No. of Lot or Part Lot.	Other Description.	○
J 372.	Hazlit, Jacob	N English	11	H	1
J 375.	Hamilton, John	Blackburn sy	39, 40.	F	1
375.	Hurd, Hortence	Blackburn sy	11	F	1
J 397.	Hill, Wm	N Concord	5, 6.	F	1
J 398.	Hunter, Robert	S Concord	11	F	1
J 419.	Humphrics, Samuel	S Concord	10	H	1
431.	Hoskin, T F	S Henry	4, 5	F	1
1.	Holden, Wm	Richardson Plot	2	F	16
38.	Harnett, Wm	Munn's sy	9, 10	F	1
113.	Haldane, Robert	co. 10	pt 13.	F	1
118.	Hughes, Frederick	Blackburn sy	16	F	1
459.	Iles, Wm	S Canaan	Plot	H	1
449.	James, Philip	E Ellor	pt 3.	H	1
J 456.	Johnston, W J	N Canaan	14, 15	F	1
101.	Johnston, Alex.	S Canaan	19 to 22.	F	1
320.	Jennings, Isaac P.	W Ellor	15	F	1
478.	Kion, Wm		pt 10.	F	1
J 479.	Kion, John	S English	14, 15	H	1
J 492.	ynam, John	E Ellor	10	F	1
J 495.	Loynes, James	N English	3	F	1
J 496.	Loynes, Samuel	N English	pt 1	F	1
497.	Loynes, John jr	N English	pt 1	F	1
J 498.	Loynes, John	N English	2.	F	1
2.	Lindsay, W B	E Ellor	3	F	1
117.	Leys, F B	Blackburn sy	27	F	1
515.	Lepage, Joseph	E Ellor	pt 9	F	1
540.	Laird, W P	N English	A, B	F	1
541.	Moore, George	Munn's sy	14	F	1
J 542.	Moore, James	Munn's sy	7.	F	1
544.	Miles, George	B. Gregory sy	6.	T	1
J 545.	Moore, Archibald	10	pt 13, &c	F	1
J 546.	McQuade, Henry	S Henry	11	F	1
J 547.	Mill, Wm	N English	9	H	1
J 558.	McLellan, Archie	S English	9, 10	F	1
J 749.	McCandless, John	S English	E hf 8	H	1
551.	McVicker, Alex	N Canaan	Plot	H	1
J 553.	McIntosh, Wm	E Caradoc	2	H	1
J 554.	Mihell, James	lot 12	33	F	1
590.	Mann, Wm	W, Blackburn sy	Plot	H	1
J 591.	Mansfield, George	S Metcalfe	3.	F	1
J 593.	Milner, Edward	N Concord	5, 6.	F	1
J 596.	Malonc, James	N English	10	H	1
J 596.	Mann, John	N English	10	F	1
J 644.	Moore, Wm C	Blackburn sy	3, 4.	F	1
J 681.	McWhinney, John	N Henry	12, 13	H	1

Roll No.  
 J 68  
 J 81  
 J 692  
 J 693  
 592  
 927  
 208  
 J 730  
 J 733  
 J 736  
 734  
 735  
 J 738  
 J 739  
 771  
 J 774  
 J 775  
 J 783  
 J 784  
 419  
 449  
 J 816  
 J 817  
 J 818  
 819  
 820  
 J 821  
 J 824  
 J 825  
 J 826  
 J 827  
 J 829  
 831  
 853  
 J 896  
 112  
 374  
 901  
 590  
 J 926  
 J 927  
 J 928



POLLING SUB-DIVISION No. 6.

Roll No.	NAME.	Concession or Street.	No. of Lot or Part Lot.	Other Description.	27 P. 0
J 681	McWhinney, James	N Henry	12, 13	F	1
J 9	Morrow, James	N English	E hf 8	F	1
816	McCrimmon, John	S English	7	F	1
J 693	Newton, John	E Ellor	13, 14	F	1
J 695	Norris, George	N Henry	1 to 3	F	1
592	Nicholson, Henry	S Canaan	1	F	1
927	Nell, Thomas	W Ellor	18	F	1
208	Orchard, George	14	N English	F	1
J 730	Plaxton, Wm	Munn's sy	20, 27, 28	F	1
J 733	Plank, Francis	con 10	3, 4	F	1
J 736	Parker, Charles	E Ellor	9	H	1
734	Plank, Sylvester	10	S W 1/4 13	F	1
735	Plank, Levi	10	S W 1/4 13	F	1
J 738	Plaxton, Thos	S English	pt 8	H	1
J 739	Plank, Samuel	Blackburn sy	26	F	1
771	Philips, J C	Blackburn sy	45	F	1
J 774	Robinson, John	Blackburn sy	31, 32	F	1
J 775	Robinson, Frank	Blackburn sy	pts 43, 44	F	1
J 783	Richardson, Robert	Richardson plot		F	1
J 784	Roblin, David	S Metcalfe	pt plot	H	1
419	Rowland, Edward	S Concord	10	F	1
449	Root, Daniel	E Ellor	3	F	1
J 816	Smith, G H	S English	7	H	1
J 817	Sellars, Wm	con 10	pt 13	F	1
J 818	Salsbury, Charles	con 10	pt 14	F	1
819	Scott, James	Munn's sy	13	F	1
820	Scott, Wm	Munn's sy	18, 26	F	1
J 821	Steadman, Wm	B, Gregory sy	1, 2, 3	F	1
J 824	Schram, Levi	con 10	pt 13	H	1
J 825	Sickles, George	con 10	pt 13	H	1
J 826	Simclair, D B	con 10	pt 13	H	1
J 827	Sickles, Geo W	W Ellor	pt 13	F	1
J 829	Stonehouse, Robert	Blackburn sy	18	H	1
831	Salsbury, Nelson	Blackburn sy	33	F	1
853	Smith, Richard	S Concord	15	H	1
J 896	Shepherd, Simpson	con 10	13	F	1
112	Shepherd, Geo B	B Gregory sy	N W 1/4 13	F	1
374	Sawyer, L D	S English	4	F	1
901	Thompson, A	W Ellor	16, 17	F	1
590	Thompson, Dr A	plot W	Blackburn sy	F	1
J 926	Urquhart, George	W Ellor	5	F	1
J 927	Urquhart, George jr	W Ellor	4	F	1
J 928	Upton, Frank	con 10	pt 13	T	1

Roll No.	NAME.	Concession or Street.	No. of Lot or Part Lot.	Other Description.	○
J 939..	Vail, J B.....	Laird sy .....	H .....	H .....	1
939..	Vail, G W.....	Laird sy .....	H .....	F .....	1
J 943..	Wilkinson, Reuben..	Munn's sy .....	1, 2, 5, 6 .....	F .....	1
J 944..	Winters, John .....	con 10 .....	pt 14.....	F .....	1
945..	Wray, Wm .....	Kittredge sy .....	11, 12, 13.....	F .....	1
J 947..	Winterton, John .....	con 10 .....	pt 13.....	F .....	1
J 948..	Watson, G W .....	E Ellor .....	4, 5 .....	F .....	1
J 865..	Walch, Wm .....	Head of Concord .....	.....	F .....	1
992..	Woodward, Frank .....	Munn's sy .....	12, 16 .....	F .....	1
999..	Woodbury, Edward .....	con 10 .....	pt 13.....	F .....	1
146..	Woods, Charles .....	plot .....	W Blackburn sy .....	F .....	1
1003..	Yager, Henry .....	W Ellor .....	S hf 19 .....	F .....	1

*Part II—Persons entitled to Vote at Municipal Elections ONLY.*

148..	Corkindale, Janet....	W, Blackburn sy .....	Plot .....	F .....	1
172..	Clemeneg, Mary .....	N Canaan.....	16, 17, 18.....	F .....	1
234..	Degraw, Eliza .....	N and S Canaan .....	5, 6 .....	F .....	1
278..	English, Eliza .....	E Caradoc .....	5 and 6.....	F .....	1
374..	Humphries, Louisa .....	S English .....	11 .....	H .....	1
395..	Harrison, Sarah .....	Blackburn sy .....	7 .....	F .....	1
398..	Hunter, Elizabeth .....	S Concord .....	11 .....	F .....	1
493..	Lamont, Flora .....	E Ellor.....	pt 10 .....	F .....	1
592..	Malone, Eliza .....	S Caradoc .....	1 .....	H .....	1
828..	Statia, Elizabeth .....	N English .....	W hf 8 .....	H .....	1
119..	Vennor, Elizabeth .....	con 10 .....	pt 12.....	F .....	1

*Part III. the same as Part I.*

528 of the above named voters are qualified to serve on Juries.

I, J. B. WINLOW, Clerk of the Municipality of the Town of Strathroy, in the County of Middlesex, do hereby certify that part one of the within list constitutes a correct list for the year 1885, of all persons appearing by the last revised Assessment Roll of the said Municipality to be entitled to vote at Elections for Members of the Legislative Assembly; and that parts one and two constitute a correct list for said year of all persons appearing by the said roll to be entitled to vote at Municipal Elections in said Municipality; and I hereby call upon all electors to examine the said list, and if any omissions or other errors are perceived therein, to take immediate proceedings to have the said errors corrected according to law.

Dated this seventh day of September, 1885.

JACOB B. WINLOW,

Clerk of the Town of Strathroy,  
Strathroy P. O.



