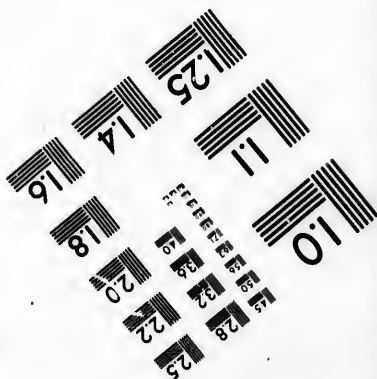
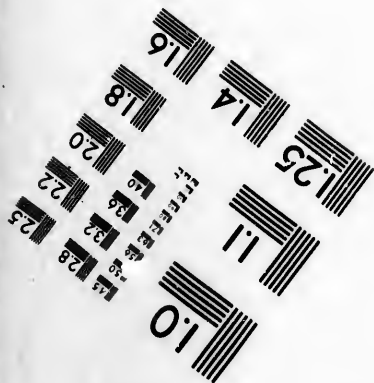
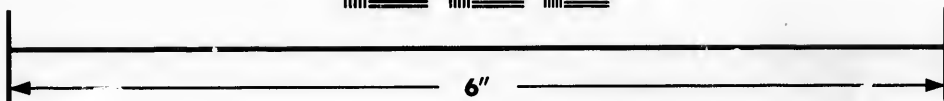
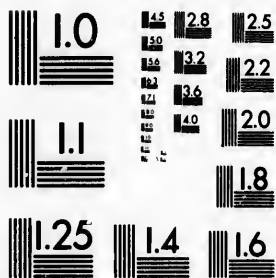


**IMAGE EVALUATION
TEST TARGET (MT-3)**



**Photographic
Sciences
Corporation**

23 WEST MAIN STREET
WEBSTER, N.Y. 14580
(716) 872-4503

**CIHM/ICMH
Microfiche
Series.**

**CIHM/ICMH
Collection de
microfiches.**



Canadian Institute for Historical Microreproductions / Institut canadien de microreproductions historiques

© 1985

Technical and Bibliographic Notes/Notes techniques et bibliographiques

The Institute has attempted to obtain the best original copy available for filming. Features of this copy which may be bibliographically unique, which may alter any of the images in the reproduction, or which may significantly change the usual method of filming, are checked below.

L'Institut a microfilmé le meilleur exemplaire qu'il lui a été possible de se procurer. Les détails de cet exemplaire qui sont peut-être uniques du point de vue bibliographique, qui peuvent modifier une image reproduite, ou qui peuvent exiger une modification dans la méthode normale de filmage sont indiqués ci-dessous.

- Coloured covers/
Couverture de couleur
- Covers damaged/
Couverture endommagée
- Covers restored and/or laminated/
Couverture restaurée et/ou pelliculée
- Cover title missing/
Le titre de couverture manque
- Coloured maps/
Cartes géographiques en couleur
- Coloured ink (i.e. other than blue or black)/
Encre de couleur (i.e. autre que bleue ou noire)
- Coloured plates and/or illustrations/
Planches et/ou illustrations en couleur
- Bound with other material/
Relié avec d'autres documents
- Tight binding may cause shadows or distortion
along interior margin/
La reliure serrée peut causer de l'ombre ou de la
distorsion le long de la marge intérieure
- Blank leaves added during restoration may
appear within the text. Whenever possible, these
have been omitted from filming/
Il se peut que certaines pages blanches ajoutées
lors d'une restauration apparaissent dans le texte,
mais, lorsque cela était possible, ces pages n'ont
pas été filmées.
- Additional comments:/ 1 sheet (verso blank)
Commentaires supplémentaires:

- Coloured pages/
Pages de couleur
- Pages damaged/
Pages endommagées
- Pages restored and/or laminated/
Pages restaurées et/ou pelliculées
- Pages discoloured, stained or foxed/
Pages décolorées, tachetées ou piquées
- Pages detached/
Pages détachées
- Showthrough/
Transparence
- Quality of print varies/
Qualité inégale de l'impression
- Includes supplementary material/
Comprend du matériel supplémentaire
- Only edition available/
Seule édition disponible
- Pages wholly or partially obscured by errata
slips, tissues, etc., have been refilmed to
ensure the best possible image/
Les pages totalement ou partiellement
obscurcies par un feuillet d'errata, une pelure,
etc., ont été filmées à nouveau de façon à
obtenir la meilleure image possible.

This item is filmed at the reduction ratio checked below/
Ce document est filmé au taux de réduction indiqué ci-dessous.

10X	12X	14X	16X	18X	20X	22X	24X	26X	28X	30X	32X
						✓					

The copy filmed here has been reproduced thanks to the generosity of:

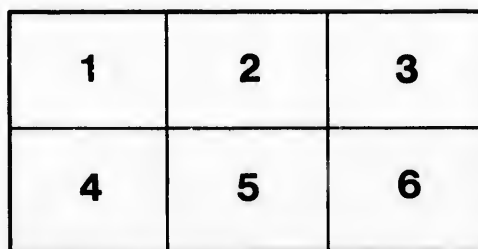
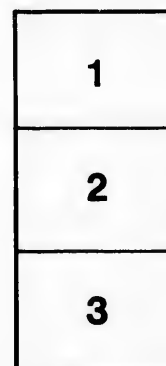
Library of the Public
Archives of Canada

The images appearing here are the best quality possible considering the condition and legibility of the original copy and in keeping with the filming contract specifications.

Original copies in printed paper covers are filmed beginning with the front cover and ending on the last page with a printed or illustrated impression, or the back cover when appropriate. All other original copies are filmed beginning on the first page with a printed or illustrated impression, and ending on the last page with a printed or illustrated impression.

The last recorded frame on each microfiche shall contain the symbol \rightarrow (meaning "CONTINUED"), or the symbol ∇ (meaning "END"), whichever applies.

Maps, plates, charts, etc., may be filmed at different reduction ratios. Those too large to be entirely included in one exposure are filmed beginning in the upper left hand corner, left to right and top to bottom, as many frames as required. The following diagrams illustrate the method:



L'exemplaire filmé fut reproduit grâce à la générosité de:

La bibliothèque des Archives
publiques du Canada

Les images suivantes ont été reproduites avec le plus grand soin, compte tenu de la condition et de la netteté de l'exemplaire filmé, et en conformité avec les conditions du contrat de filmage.

Les exemplaires originaux dont la couverture en papier est imprimée sont filmés en commençant par le premier plat et en terminant soit par la dernière page qui comporte une empreinte d'impression ou d'illustration, soit par le second plat, selon le cas. Tous les autres exemplaires originaux sont filmés en commençant par la première page qui comporte une empreinte d'impression ou d'illustration et en terminant par la dernière page qui comporte une telle empreinte.

Un des symboles suivants apparaîtra sur la dernière image de chaque microfiche, selon le cas: le symbole \rightarrow signifie "A SUIVRE", le symbole ∇ signifie "FIN".

Les cartes, planches, tableaux, etc., peuvent être filmés à des taux de réduction différents. Lorsque le document est trop grand pour être reproduit en un seul cliché, il est filmé à partir de l'angle supérieur gauche, de gauche à droite, et de haut en bas, en prenant le nombre d'images nécessaire. Les diagrammes suivants illustrent la méthode.

COMPARATIVE

UNDER MR. GALT'S PROPOSAL

THE UNITED STATES' TARIFF, AND A CANADIAN

VALUE OF IMPORTS ESTIMATED ON Being the Year which Mr. Galt

CLASS.	VALUE OF DUTIABLE IMPORTS.			MR. GALT'S RATE AND AMOUNT OF DUTY.			RATES AND AMOUNT UNDER		
1	Brandy, Spirits, &c.	£31,304	0 0	50 per cent...	£15,652	0 0	30 per cent.		
2	Refined Sugar.	46,688	0 0	40 per cent...	18,672	0 0	24 per cent.		
3	Raw Sugar and Molasses	593,720	0 0	30 per cent...	178,116	0 0	24 per cent. *		
4	Tea and Coffee.	379,240	0 0	20 per cent...	75,848	0 0	Free,		
5	Wines, Spices, Fruit, &c.	187,870	0 0	30 per cent...	56,361	0 0	Average say 20 per cent.		
6	Leather Manufactures, Soap and Starch.	167,740	0 0	25 per cent...	41,935	0 0	" " 24 per cent		
7	Printing Paper.	22,920	0 0	15 per cent...	3,303	0 0	24 per cent.		
8	Sun-icles.	794,000	0 0	10 per cent...	79,400	0 0	20 per cent.		
9	Dry Goods, &c.	4,560,006	0 0	20 per cent...	912,001	0 0	Average say 25 per cent.	1	
10	Whiskey,	34,572	0 0	18 c'ts per gal	14,110	0 0			£1
		£6,818,060	0 0		£1,395,398	0 0			

* This high duty is in consequence of the U. S.

N. B.—The Duty levied under Mr. Galt's Tariff, on Sugar, Molasses, Tea and Coffee, is £272,636, as above to the U. S. Customs Duties," viz. 138,654. The idea under this latter Tariff is to give all the encouragement

Since the above figures were in type, Mr. Galt has so far yielded in his views as to raise Spirits from 50 to which it is not worth while to alter them.

ATIVE REVENUE

ROPOSED TARIFF FOR 1859,

CANADIAN TARIFF APPROXIMATED TO THAT OF U. S.

ATED ON QUANTITIES IMPORTED IN 1857,

ich Mr. Galt takes for his calculations.

AND AMOUNT UNDER U. S. TARIFF.				A CANADIAN TARIFF, APPROXIMATED TO THAT OF U. S.				CLAUSES		
.....	£9,391	0	0	On Spirits,	£80,136	0	0	1—	Being Mr. Galt's £15,652 on Brandy, &c., and £14,110 on Whiskey, and £59,374, which is the additional duty levied on Spirits and Wines by Mr. Cayley's Tariff, on an average of four years, 1854 to 1857.	
.....	11,205	0	0	25 per cent.	11,672	0	0	2		
*	142,493	0	0	15 per cent. *	89,058	0	0	3		
.....	10 per cent.	37,924	0	0	4		
50 per cent.	56,361	0	0	Same as United States, ..	56,361	0	0	5—		[now.
24 per cent	40,257	0	0	“ “ “ “	40,257	0	0	6—		Ditto.
.....	5,496	0	0	15 per cent. *	3,303	0	0	7		
.....	158,800	0	0	10 per cent. *	79,400	0	0	8—		Except Jewellery, Watches and certain manufactures which should be in the 20 per cent. list; white Bar Iron and other raw materials should be at 6 per cent.
25 per cent.	1,140,001	0	0	Same as in U. S.	1,140,000	0	0	9		
	£1,564,004	0	0		A £1,538,111	0	0			

n consequence of the U. S. themselves growing sugar.

* There is no harm in having these less than charged in U. S., as they are not articles we will export from Canada.

A There might be £228,000 reduced from this, thus making the Dry Goods 50 per cent., as in Mr. Galt's Tariff. The difference (to make this Tariff even then produce as much as Mr. Galt's Tariff) could be easily made up by retaining the 5 per cent., which Mr. Galt takes off clothing, and putting the same on other articles, in which this would give an increase of home employment.

272,636, as above, being about a hundred per cent. over that which is levied on them under "the Tariff approximated to encourage, under Mr. Cayley's Tariff, to Canadian industry, and no more.

Spirits from 50 to 100 per cent., which, however, would only make a difference of £15,652 on these Tables, and for

