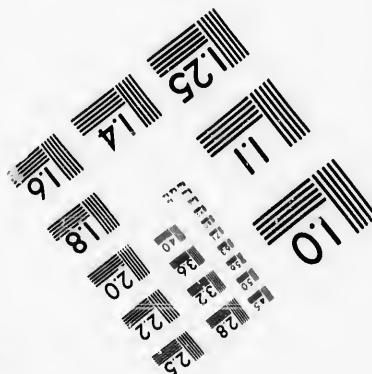
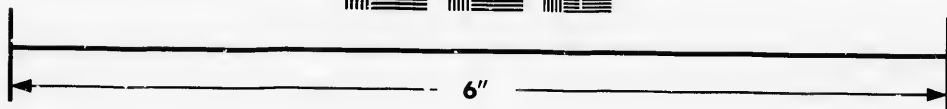
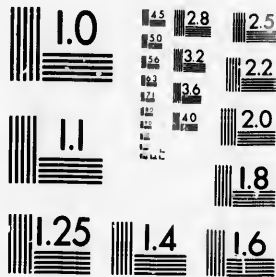
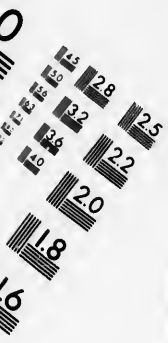


**IMAGE EVALUATION
TEST TARGET (MT-3)**



**Photographic
Sciences
Corporation**

23 WEST MAIN STREET
WEBSTER, N.Y. 14580
(716) 872-4503



**CIHM/ICMH
Microfiche
Series.**

**CIHM/ICMH
Collection de
microfiches.**



Canadian Institute for Historical Microreproductions / Institut canadien de microreproductions historiques



© 1986

Technical and Bibliographic Notes/Notes techniques et bibliographiques

The Institute has attempted to obtain the best original copy available for filming. Features of this copy which may be bibliographically unique, which may alter any of the images in the reproduction, or which may significantly change the usual method of filming, are checked below.

L'Institut a microfilmé le meilleur exemplaire qu'il lui a été possible de se procurer. Les détails de cet exemplaire qui sont peut-être uniques du point de vue bibliographique, qui peuvent modifier une image reproduite, ou qui peuvent exiger une modification dans la méthode normale de filmage sont indiqués ci-dessous.

- | | |
|--|--|
| <input type="checkbox"/> Coloured covers/
Couverture de couleur | <input type="checkbox"/> Coloured pages/
Pages de couleur |
| <input type="checkbox"/> Covers damaged/
Couverture endommagée | <input type="checkbox"/> Pages damaged/
Pages endommagées |
| <input type="checkbox"/> Covers restored and/or laminated/
Couverture restaurée et/ou pelliculée | <input type="checkbox"/> Pages restored and/or laminated/
Pages restaurées et/ou pelliculées |
| <input type="checkbox"/> Cover title missing/
Le titre de couverture manque | <input checked="" type="checkbox"/> Pages discoloured, stained or foxed/
Pages décolorées, tachetées ou piquées |
| <input type="checkbox"/> Coloured maps/
Cartes géographiques en couleur | <input type="checkbox"/> Pages detached/
Pages détachées |
| <input type="checkbox"/> Coloured ink (i.e. other than blue or black)/
Encre de couleur (i.e. autre que bleue ou noire) | <input checked="" type="checkbox"/> Showthrough/
Transparence |
| <input type="checkbox"/> Coloured plates and/or illustrations/
Planches et/ou illustrations en couleur | <input type="checkbox"/> Quality of print varies/
Qualité inégale de l'impression |
| <input type="checkbox"/> Bound with other material/
Relié avec d'autres documents | <input type="checkbox"/> Includes supplementary material/
Comprend du matériel supplémentaire |
| <input type="checkbox"/> Tight binding may cause shadows or distortion
along interior margin/
La reliure serrée peut causer de l'ombre ou de la
distorsion le long de la marge intérieure | <input type="checkbox"/> Only edition available/
Seule édition disponible |
| <input type="checkbox"/> Blank leaves added during restoration may
appear within the text. Whenever possible, these
have been omitted from filming/
Il se peut que certaines pages blanches ajoutées
lors d'une restauration apparaissent dans le texte,
mais, lorsque cela était possible, ces pages n'ont
pas été filmées. | <input type="checkbox"/> Pages wholly or partially obscured by errata
slips, tissues, etc., have been refilmed to
ensure the best possible image/
Les pages totalement ou partiellement
obscurcies par un feuillet d'errata, une pelure,
etc., ont été filmées à nouveau de façon à
obtenir la meilleure image possible. |
| <input checked="" type="checkbox"/> Additional comments: [Printed ephemera] [4] p.
Commentaires supplémentaires: | |

This item is filmed at the reduction ratio checked below/
Ce document est filmé au taux de réduction indiqué ci-dessous.

10X	12X	14X	16X	18X	20X	22X	24X	26X	28X	30X	32X
<input type="checkbox"/>	<input type="checkbox"/>	<input type="checkbox"/>	<input type="checkbox"/>	<input type="checkbox"/>	<input type="checkbox"/>	<input type="checkbox"/>	<input type="checkbox"/>	<input type="checkbox"/>	<input checked="" type="checkbox"/>	<input type="checkbox"/>	<input type="checkbox"/>

The copy filmed here has been reproduced thanks to the generosity of:

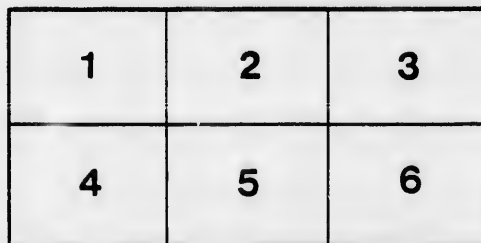
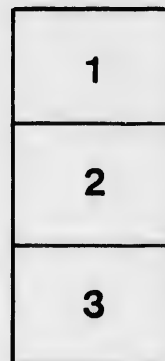
D. B. Weldon Library
University of Western Ontario
(Regional History Room)

The images appearing here are the best quality possible considering the condition and legibility of the original copy and in keeping with the filming contract specifications.

Original copies in printed paper covers are filmed beginning with the front cover and ending on the last page with a printed or illustrated impression, or the back cover when appropriate. All other original copies are filmed beginning on the first page with a printed or illustrated impression, and ending on the last page with a printed or illustrated impression.

The last recorded frame on each microfiche shall contain the symbol → (meaning "CONTINUED"), or the symbol ∇ (meaning "END"), whichever applies.

Maps, plates, charts, etc., may be filmed at different reduction ratios. Those too large to be entirely included in one exposure are filmed beginning in the upper left hand corner, left to right and top to bottom, as many frames as required. The following diagrams illustrate the method:



L'exemplaire filmé fut reproduit grâce à la générosité de:

D. B. Weldon Library
University of Western Ontario
(Regional History Room)

Les images suivantes ont été reproduites avec le plus grand soin, compte tenu de la condition et de la netteté de l'exemplaire filmé, et en conformité avec les conditions du contrat de filmage.

Les exemplaires originaux dont la couverture en papier est imprimée sont filmés en commençant par le premier plat et en terminant soit par la dernière page qui comporte une empreinte d'impression ou d'illustration, soit par le second plat, selon le cas. Tous les autres exemplaires originaux sont filmés en commençant par la première page qui comporte une empreinte d'impression ou d'illustration et en terminant par la dernière page qui comporte une telle empreinte.

Un des symboles suivants apparaîtra sur la dernière image de chaque microfiche, selon le cas: le symbole → signifie "À SUIVRE", le symbole ∇ signifie "FIN".

Les cartes, planches, tableaux, etc., peuvent être filmés à des taux de réduction différents. Lorsque le document est trop grand pour être reproduit en un seul cliché, il est filmé à partir de l'angle supérieur gauche, de gauche à droite, et de haut en bas, en prenant le nombre d'images nécessaire. Les diagrammes suivants illustrent la méthode.

GRAND OPERA HOUSE

C. J. WHITNEY
LESSEE

A. E. ROOTE
MANAGER

PROGRAMME

LONDON
ONT.

Theatrical

Headquarters

FOR

**CIGARS
'TOBACCOS**

AND EVERYTHING IN THE SMOKERS' LINE

My 5c "Special Cigars"
Cannot be Surpassed

JOE. NOLAN

Just Around the Corner to the Left

**TRY NOLAN'S UNRIVALLED
SMOKING MIXTURE**

BETWEEN THE ACTS

CALL
AT THE **RICHMOND HOTEL**

N. E. Cor. Richmond and King Sts.

FRESH LAGER, WINES, LIQUORS and CIGARS

H. L. PEINE, New Proprietor

SEASON 1898-9



WEEK COMMENCING AUG. 29

GERTRUDE KIMBERLEY

AND THE

METROPOLITAN OPERA COMPANY



Monday (Evening) - - Mikado
Tuesday (Matinee) - - Mikado
Tuesday (Evening) - - Mikado
Wednesday (Evening) - Olivette
Thursday (Matinee) - - Olivette
Thursday (Evening) - - Olivette
Friday (Evening) - - Pinafore
Saturday (Matinee) - - Pinafore
Saturday (Evening) - - Pinafore

MASON & RISCH

PIANOS

The Instruments
.... of the Cultured

SEE AND HEAR THEM AT THE
COMING EXHIBITION

—OR AT—

213 DUNDAS STREET

C. H. TESKEY

MANAGER
LONDON BRANCH

SMITH BROS.

STEAM, GAS and
HOT WATER
FITTERS

PLUMBERS

265 Dundas Street
Telephone 538

LONDON

THE LONDON FLORAL CO'Y

....DEALERS IN....

All Kinds of

“ CUT ” FLOWERS

And Decorative Plants.

Theatre Parties
a Specialty. 249 Dundas Street.

PHONE 493.

Bicyclists' Summer

Resort

Where they can be re-
freshed for their journey

SUMMER BEVERAGES drawn from the "London"
Mammoth Fountain.

WILD HONEYSUCKLE—a delicious new drink
for Bicyclists which can only be had at

SHORT BROS.

PHONE 491.

220 DUNDAS
STREET.

FRESH OYSTERS

NOTICE TO ADVERTISERS

Advertisements which reached our
office too late for publication in
this programme will appear in the
next publication. Some little space
is still to rent for this season. A
postal card to the box office will
receive prompt attention.

MONDAY AND TUESDAY EVENINGS

GILBERT & SULLIVAN'S
OPERA

The Mikado



CAST OF CHARACTERS

The Mikado of Japan Stanley Hamilton Forde

Nanki Poo, (His son disguised as a wan-
dering minstrel and in love with
Yum Yum) Robert Waring

Ko-Ko, (Lord High Executioner) Beau Brummel

Pooh Bah, (Lord High Everything Else)
W. S. Mackay or S. Kinder

E.

52

FULL

Am

Supp

ALW

IN S

RS

reached our
plication in
pear in the
little space
season. A
office will
n.

CAST OF CHARACTERS

(CONTINUED)

Pish Tush, (A Noble Lord).....Harold E. Scott

Nee Ban F. A. Bernathy

Yum Yum, (Three little Girls from } Miss Gertrude Kimberly
Petti Sing, } Irine Palmer
Peep Bo, (School.) Rosalle La Blonde

Katisha, (An elderly Lady of the Court in
love with Nanki Poo).....Dora Escott

School Girls, Nobles of Japan, Guards and
Coolies, by the Chorus.

Orchestra under the direction of Prof. John
Rubens. Costumes designed and executed by
Mrs. T. L. Winters, Buffalo, N. Y.

ACT I.

Court yard of Ko Ko's Official Residence.

ACT II.

Ko Ko's Garden.

The Famous Bell Orchestral Piano

IS USED EXCLUSIVELY IN THIS THEATRE.

E. J. PEARCE

Successor to E. J. BURKE

521 RICHMOND STREET

FULL LINE

Amateur
Supplies

ALWAYS
IN STOCK



SLATER BROS.

TAILORS

399 Richmond St. Telephone 844

FINE IMPORTED WOOLENS

A SPECIALTY

LARGEST STOCK IN THE CITY ORDERS FINISHED PROMPTLY

THE TEGUMSEH

LONDON, ONT.



FIRST-CLASS
IN ALL
APPOINTMENTS.

SPECIAL RATES
FOR COMPANIES

CHAS. W. DAVIS,
Proprietor.



"THE BUTTONS DON'T COME OFF"

"THE LININGS DON'T RIP"

"THEY HOLD THEIR SHAPE"

"THEY FIT LIKE MADE-TO-ORDER CLOTHING"

Grafton

PLAIN AND FANCY

...Worsteds

\$8.50 to \$12.00



Grafton

The above remarks
are some of the
pleasant things we
hear about our

FANCY SCOTCH

Sack Suits

\$8.50, \$10.00

\$12.00



Grafton
CLOTHING MANUFACTURERS

CLOTHING

All we ask is to
have you
look.

GRAFTON & Co.

Clothing Manufacturers

Priddis Bros. Old Stand
158 Dundas Street.

J. M. HICKEY,
MANAGER.

