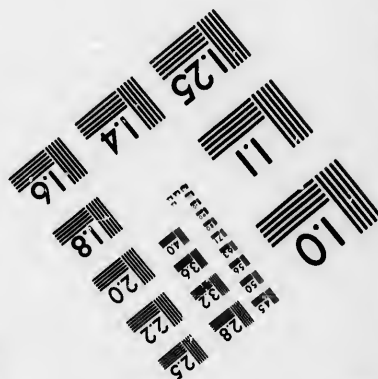
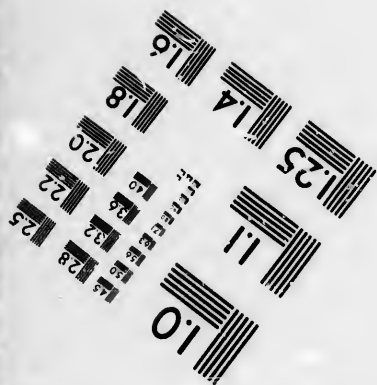
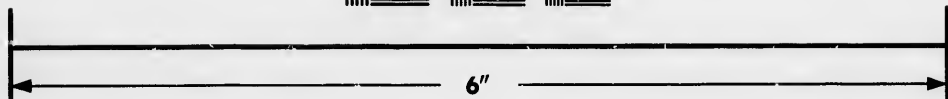
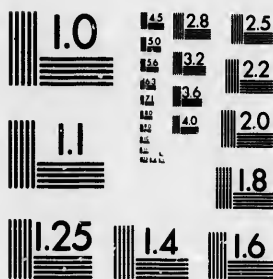


**IMAGE EVALUATION
TEST TARGET (MT-3)**



**Photographic
Sciences
Corporation**

23 WEST MAIN STREET
WEBSTER, N.Y. 14580
(716) 872-4503

1.5
1.8
2.0
2.2
2.5
2.8
3.2
3.6
4.0

**CIHM/ICMH
Microfiche
Series.**

**CIHM/ICMH
Collection de
microfiches.**



Canadian Institute for Historical Microreproductions / Institut canadien de microreproductions historiques

1.5
1.8
2.0
2.2
2.5
2.8
3.2
3.6
4.0

© 1985

Technical and Bibliographic Notes/Notes techniques et bibliographiques

The institute has attempted to obtain the best original copy available for filming. Features of this copy which may be bibliographically unique, which may alter any of the images in the reproduction, or which may significantly change the usual method of filming, are checked below.

L'Institut a microfilmé le meilleur exemplaire qu'il lui a été possible de se procurer. Les détails de cet exemplaire qui sont peut-être uniques du point de vue bibliographique, qui peuvent modifier une image reproduite, ou qui peuvent exiger une modification dans la méthode normale de filmage sont indiqués ci-dessous.

- Coloured covers/
Couverture de couleur
- Covers damaged/
Couverture endommagée
- Covers restored and/or laminated/
Couverture restaurée et/ou pelliculée
- Cover title missing/
Le titre de couverture manque
- Coloured maps/
Cartes géographiques en couleur
- Coloured ink (i.e. other than blue or black)/
Encre de couleur (i.e. autre que bleue ou noire)
- Coloured plates and/or illustrations/
Planches et/ou illustrations en couleur
- Bound with other material/
Relié avec d'autres documents
- Tight binding may cause shadows or distortion along interior margin/
La reliure serrée peut causer de l'ombre ou de la distorsion le long de la marge intérieure
- Blank leaves added during restoration may appear within the text. Whenever possible, these have been omitted from filming/
Il se peut que certaines pages blanches ajoutées lors d'une restauration apparaissent dans le texte, mais, lorsque cela était possible, ces pages n'ont pas été filmées.
- Additional comments: /
Commentaires supplémentaires:

[Printed ephemera] 1 sheet (verso blank)

- Coloured pages/
Pages de couleur
- Pages damaged/
Pages endommagées
- Pages restored and/or laminated/
Pages restaurées et/ou pelliculées
- Pages discoloured, stained or foxed/
Pages décolorées, tachetées ou piquées
- Pages detached/
Pages détachées
- Showthrough/
Transparence
- Quality of print varies/
Qualité inégale de l'impression
- Includes supplementary material/
Comprend du matériel supplémentaire
- Only edition available/
Seule édition disponible
- Pages wholly or partially obscured by errata slips, tissues, etc., have been refilmed to ensure the best possible image/
Les pages totalement ou partiellement obscurcies par un feuillet d'errata, une pelure, etc., ont été filmées à nouveau de façon à obtenir la meilleure image possible.

This item is filmed at the reduction ratio checked below/
Ce document est filmé au taux de réduction indiqué ci-dessous.

10X	12X	14X	16X	18X	20X	22X	24X	26X	28X	30X	32X
								✓			

The copy filmed here has been reproduced thanks to the generosity of:

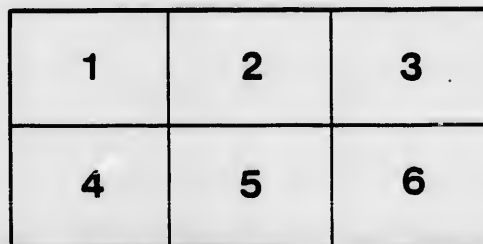
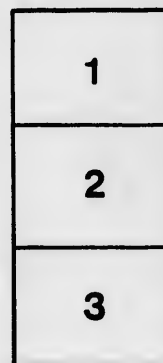
D. B. Weldon Library
University of Western Ontario
(Regional History Room)

The images appearing here are the best quality possible considering the condition and legibility of the original copy and in keeping with the filming contract specifications.

Original copies in printed paper covers are filmed beginning with the front cover and ending on the last page with a printed or illustrated impression, or the back cover when appropriate. All other original copies are filmed beginning on the first page with a printed or illustrated impression, and ending on the last page with a printed or illustrated impression.

The last recorded frame on each microfiche shall contain the symbol \rightarrow (meaning "CONTINUED"), or the symbol ∇ (meaning "END"), whichever applies.

Maps, plates, charts, etc., may be filmed at different reduction ratios. Those too large to be entirely included in one exposure are filmed beginning in the upper left hand corner, left to right and top to bottom, as many frames as required. The following diagrams illustrate the method:



L'exemplaire filmé fut reproduit grâce à la générosité de:

D. B. Weldon Library
University of Western Ontario
(Regional History Room)

Les images suivantes ont été reproduites avec le plus grand soin, compte tenu de la condition et de la netteté de l'exemplaire filmé, et en conformité avec les conditions du contrat de filmage.

Les exemplaires originaux dont la couverture en papier est imprimée sont filmés en commençant par le premier plat et en terminant soit par la dernière page qui comporte une empreinte d'impression ou d'illustration, soit par le second plat, selon le cas. Tous les autres exemplaires originaux sont filmés en commençant par la première page qui comporte une empreinte d'impression ou d'illustration et en terminant par la dernière page qui comporte une telle empreinte.

Un des symboles suivants apparaîtra sur la dernière image de chaque microfiche, selon le cas: le symbole \rightarrow signifie "A SUIVRE", le symbole ∇ signifie "FIN".

Les cartes, planches, tableaux, etc., peuvent être filmés à des taux de réduction différents. Lorsque le document est trop grand pour être reproduit en un seul cliché, il est filmé à partir de l'angle supérieur gauche, de gauche à droite, et de haut en bas, en prenant le nombre d'images nécessaire. Les diagrammes suivants illustrent la méthode.

ails
du
modifier
une
page

rata
o

elure,
à

32X

CHANGERY

IN CHAN

BETWEEN Thomas McPherson, *President*, and James Re
Society, Plaintiffs,

AND

George McKenzie Gunn, William Gordon, and Benjamin Gra
Young, James Law, David Law, William Leitch, Do
Gooderham, senior, J. G. Worts, Henry Gooderham, G
James Gordon, William McLeod, Alexander Cashm
parties in the Master's Office, *Defendants.*

PURSUANT TO THE DECREE OF THE
CANADA, made in this cause on the twenty-sixth day of
dred and fifty-nine, and of an order of the said Court ma
one thousand eight hundred and sixty-one, and with the approba
at London, the undermentioned

LANDS & P

Situate in

TOWN OF ST

IN THE

EVERY SALE!!!

CHANCERY

and James Redford, *Treasurer*, of the Stratford and Perth Building

AND

Benjamin Grant, by Bill, and the Commercial Bank of Canada, John
am Leitch, Donald McInnes, Gibson Homan, Adam Oliver, William
Gooderham, George Worts, Alfred Watts, John Youngs, D.H. Lizar's,
ander Cashman, Thomas McElrath, and William E. Burton, made

OF THE COURT OF CHANCERY FOR UPPER
y-sixth day of October, in the year of our Lord one thousand eight hun-
said Court made the eleventh day of January, in the year of our Lord
h the approbation of James Shanly, Esquire, Master of the said Court

PREMISES!

Situate in the

STRATFORD,

IN THE

TOWN OF ST

COUNTY OF

SOLD BY PUBL

Mr. Thomas

Auctioneer, duly appointed for

AT THE ALBI

SATURDAY the 22nd day 0

In the afternoon, Lot Number two hundred and twenty of the Canada Company's survey of the acre of land, be the same more or less.

The lot has been used as a garden, but at present is only partially enclosed, and is unoccupied.

The purchaser will be required, at the time of sale, to pay down a deposit in the proportion of one-fourth of the purchase money, to the solicitor, and the balance of the purchase money, on the twentieth day of July, A. D. 1861, with interest.

The other conditions of sale will be the same as those contained in the general orders of the Court.

Further particulars and conditions of sale may be had on application to the said Master of the Court.

Auctioneer, Mr. Miller, at Stratford.

Dated this 22nd day of May, A. D. 1861.

R. MACFARLANE,

Vendors' Solicitor,

IN THE
STRATFORD,

IN THE
OF PERTH,

Will be
PUBLIC AUCTION!

BY
Thomas Miller,
specially appointed for that purpose,

ELBION HOTEL,

in the town of Stratford, on
the 1st day of JUNE, at two O'clock,

the company's survey of the said town of Stratford, containing by admeasurement one quarter of an acre, more or less, as shown on the plan enclosed, and is unoccupied.

A deposit in the proportion of £10 for every £100 of his or her purchase money, to the vendors or their agents, is to be paid on the day of sale.

The sale is to be held at the Court of Chancery, or at such other place as the Masters of the Court of Chancery shall think fit, and the said Master at London, R. Macfarlane, Esq., Solicitor for the Vendors, and also to the

J. SHANLY,
Master in Chancery.

