

**CIHM
Microfiche
Series
(Monographs)**

**ICMH
Collection de
microfiches
(monographies)**



Canadian Institute for Historical Microreproductions / Institut canadien de microreproductions historiques

© 1998

Technical and Bibliographic Notes / Notes techniques et bibliographiques

The Institute has attempted to obtain the best original copy available for filming. Features of this copy which may be bibliographically unique, which may alter any of the images in the reproduction, or which may significantly change the usual method of filming are checked below.

- ☒ Coloured covers / Couverture de couleur
- ☐ Covers damaged / Couverture endommagée
- ☐ Covers restored and/or laminated / Couverture restaurée et/ou pelliculée
- ☐ Cover title missing / Le titre de couverture manque
- ☐ Coloured maps / Cartes géographiques en couleur
- ☐ Coloured ink (i.e. other than blue or black) / Encre de couleur (i.e. autre que bleue ou noire)
- ☐ Coloured plates and/or illustrations / Planches et/ou illustrations en couleur
- ☐ Bound with other material / Relié avec d'autres documents
- ☐ Only edition available / Seule édition disponible
- ☐ Tight binding may cause shadows or distortion along interior margin / La reliure serrée peut causer de l'ombre ou de la distorsion le long de la marge intérieure.
- ☐ Blank leaves added during restorations may appear within the text. Whenever possible, these have been omitted from filming / Il se peut que certaines pages blanches ajoutées lors d'une restauration apparaissent dans le texte, mais, lorsque cela était possible, ces pages n'ont pas été filmées.
- ☐ Additional comments / Commentaires supplémentaires:

L'Institut a microfilmé le meilleur exemplaire qu'il lui a été possible de se procurer. Les détails de cet exemplaire qui sont peut-être uniques du point de vue bibliographique, qui peuvent modifier une image reproduite, ou qui peuvent exiger une modification dans la méthode normale de filmage sont indiqués ci-dessous.

- ☐ Coloured pages / Pages de couleur
- ☐ Pages damaged / Pages endommagées
- ☐ Pages restored and/or laminated / Pages restaurées et/ou pelliculées
- ☒ Pages discoloured, stained or foxed / Pages décolorées, tachetées ou piquées
- ☐ Pages detached / Pages détachées
- ☒ Showthrough / Transparence
- ☒ Quality of print varies / Qualité inégale de l'impression
- ☐ Includes supplementary material / Comprend du matériel supplémentaire
- ☐ Pages wholly or partially obscured by errata slips, tissues, etc., have been refilmed to ensure the best possible image / Les pages totalement ou partiellement obscurcies par un feuillet d'errata, une pelure, etc., ont été filmées à nouveau de façon à obtenir la meilleure image possible.
- ☐ Opposing pages with varying colouration or discolourations are filmed twice to ensure the best possible image / Les pages s'opposant ayant des colorations variables ou des décolorations sont filmées deux fois afin d'obtenir la meilleure image possible.

This item is filmed at the reduction ratio checked below /
Ce document est filmé au taux de réduction indiqué ci-dessous.

A horizontal number line is shown, starting at $10x$ and ending at $32x$. The line is divided into 12 equal segments by 13 tick marks. The tick marks are labeled with the following values from left to right: $10x$, $12x$, $14x$, $16x$, $18x$, $20x$, $22x$, $24x$, $26x$, $28x$, $30x$, and $32x$. An arrow points to the tick mark labeled $16x$.

The copy filmed here has been reproduced thanks to the generosity of:

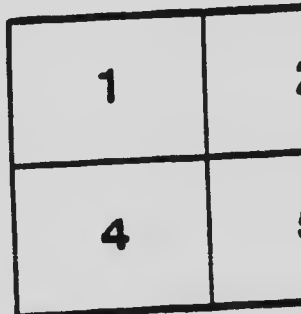
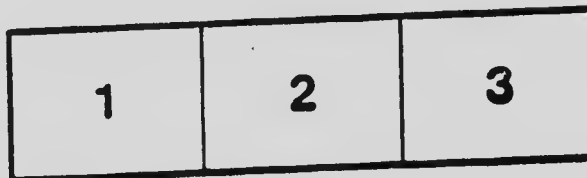
National Library of Canada

The images appearing here are the best quality possible considering the condition and legibility of the original copy and in keeping with the filming contract specifications.

Original copies in printed paper covers are filmed beginning with the front cover and ending on the last page with a printed or illustrated impression, or the back cover when appropriate. All other original copies are filmed beginning on the first page with a printed or illustrated impression, and ending on the last page with a printed or illustrated impression.

The last recorded frame on each microfiche shall contain the symbol \longrightarrow (meaning "CONTINUED"), or the symbol ∇ (meaning "END"), whichever applies.

Maps, plates, charts, etc., may be filmed at different reduction ratios. Those too large to be entirely included in one exposure are filmed beginning in the upper left hand corner, left to right and top to bottom, as many frames as required. The following diagrams illustrate the method:



L'exemplaire filmé fut reproduit grâce à la
générosité de:

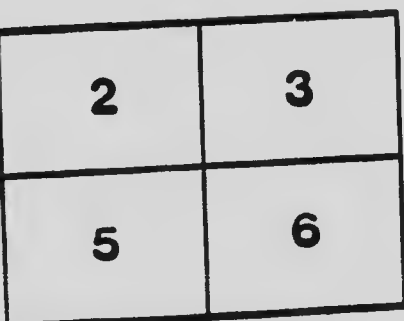
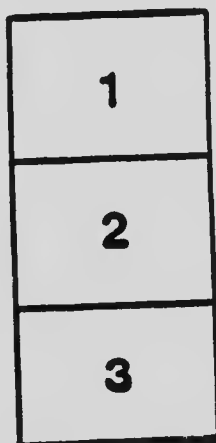
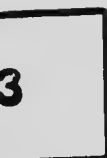
Bibliothèque nationale du Canada

Les images suivantes ont été reproduites avec le
plus grand soin, compte tenu de la condition et
de la netteté de l'exemplaire filmé, et en
conformité avec les conditions du contrat de
filmage.

Les exemplaires originaux dont la couverture en
papier est imprimée sont filmés en commençant
par le premier plat et en terminant soit par le
dernière page qui comporte une empreinte
d'impression ou d'illustration, soit par le second
plat, selon le cas. Tous les autres exemplaires
originaux sont filmés en commençant par la
première page qui comporte une empreinte
d'impression ou d'illustration et en terminant par
la dernière page qui comporte une telle
empreinte.

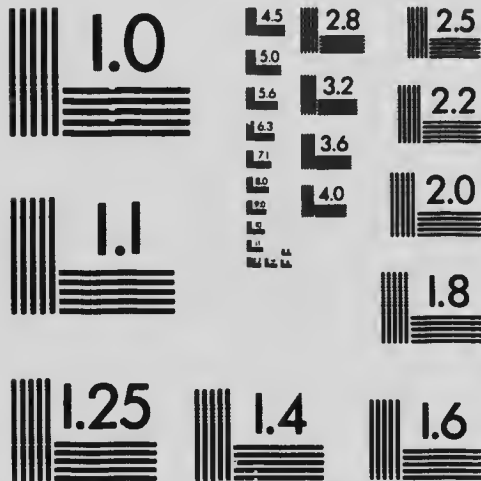
Un des symboles suivants apparaît sur le
dernière image de chaque microfiche, selon le
cas: le symbole \rightarrow signifie "A SUIVRE", le
symbole ∇ signifie "FIN".

Les cartes, planches, tableaux, etc., peuvent être
filmés à des taux de réduction différents.
Lorsque le document est trop grand pour être
reproduit en un seul cliché, il est filmé à partir
de l'angle supérieur gauche, de gauche à droite,
et de haut en bas, en prenant le nombre
d'images nécessaire. Les diagrammes suivants
illustrent la méthode.



MICROCOPY RESOLUTION TEST CHART

(ANSI and ISO TEST CHART No. 2)



APPLIED IMAGE Inc

1653 East Main Street
Rochester, New York 14609 USA
(716) 482 - 0300 - Phone
(716) 288 - 5989 - Fax

The Catholic Mutual
Benefit Association
OF CANADA



CEREMONIAL

FORM OF INITIATION OF
MEMBERS AND INSTAL-
LATION OF OFFICERS



1911

11-2-17
 11-2-17
 11-2-17

DIAGRAM SHOWING METHOD OF DEVICES



C.M.B.A. Ceremonial

Form of Initiation of Members and Installation of Officers.

The officers' positions in branch chamber will be as appears in diagram printed herein.

DESIGNS TO BE PLACED OVER THE OFFICERS' STATIONS.

Over the President's chair shall be placed a design of a plain Passion Cross, emblematic of faith. Below the Cross and under the same frame or on same substance shall be a design of clasped hands as emblematic of brotherly love, unity, and affection, and on the central pedestal a Crucifix not less than 18 inches in height.

INSTRUCTIONS.

In order to have the ceremonies of the branch conducted in an impressive and eloquent manner, all officers should commit their parts to memory. Reading the ceremonies destroys their effect, and will soon cause members to lose interest in the work.

New members are never supposed to know what is in store for them previous to the initiation, so that the more solemn the initiation is made the more lasting effect it will have and the more energy and enthusiasm it will instil into them for the upbuilding of the Association.

Where it is possible, a Catholic hymn or ode should follow the opening prayer and precede the closing prayer.

While candidates are going to and from the respective stations during the initiation ceremonies appropriate Catholic hymns, accompanied by music, should be sung.

Smoking must not be permitted in the branch chamber.

**DUTY OF MEMBERS ENTERING OR LEAVING DURING
SESSION.**

It shall be the duty of all members entering the room during session to advance to the central pedestal and salute the Chair, and there remain until they are answered by the Chair, and no member shall leave the room during session without permission from the Chair, after saluting and receiving notice from the same.

MEETINGS.

The hour of meeting having arrived, the following shall be the opening ceremonies:

PRESIDENT—The members will come to order, and the officers will occupy their respective stations. The Guard will please invite the members in to take part in the meeting. Brother Marshal, are all present members of the Association and qualified to sit with us?

The Marshal on receiving the inquiry will salute and make the circuit of the hall, and if whilst so doing he finds a person that has not the current password, he will take name and number of branch, return to the central pedestal, salute the Chair and say:

MARSHAL—Brother President, I vouch for all present except (give name, etc., of the stranger) as members of the Catholic Mutual Benefit Association of Canada.

The person challenged will be escorted by the Marshal to the pedestal and will answer such questions as may be asked of him; if the answers he gives are satisfactory and he is found to be a member in good standing, the Financial Secretary will give him the current password; if the answers are not satisfactory, the Chair shall instruct the Marshal to conduct the person or persons from the Branch hall.

PRESIDENT—Brother First Vice-President, what is the object of this Association?

FIRST VICE-PRESIDENT--To encourage by all honorable means, Christian union and mutual protection for our members, and those dependent on them; and also by means of Christian books and literature approved by our Spiritual Adviser, to educate members and their families in piety, integrity and frugality.

PRESIDENT — Brother Second Vice-President, such being the objects of the Association, what is our first duty?

SECOND VICE-PRESIDENT—To invoke the blessings of God on all our undertakings.

PRESIDENT—Such being our duty, the Spiritual Adviser (or Chancellor) will recite the opening prayer.

The President strikes four blows of the gavel, when all present will kneel during the prayer, and so remain until ordered to be seated by the President giving one blow of the gavel.

PRAYER.

"In the Name of the Father," etc.

"Our Father," and "Hail Mary," and "Glory be to the Father," etc.

"May the souls of the faithful departed members through the mercy of God, rest in peace. Amen."

"In the Name of the Father," etc.

No person shall be allowed to enter or leave the room during prayer.

PRESIDENT—We will now sing our opening hymn (or ode).

PRESIDENT—Mr. Chancellor, now that the object of our Association has been duly stated, and having opened our meeting with prayer, what is still necessary to attain the objects for which we are banded together?

CHANCELLOR—There should be due respect paid to all mandates of our Grand Council or President; all decrees from our Grand Council or President, and to the orders of our superiors; the laws of our Association should be observed and strictly enforced; no unnecessary debate should take place, proper decorum should be observed, and business should be promptly transacted.

PRESIDENT—I now declare this meeting of Branch No. —, of the Catholic Mutual Benefit Association of Canada, opened in the usual manner. The members will refrain from all private conversation and give undivided attention to the business that may come before the meeting.

The regular order of business will then be taken up.

ORDER OF BUSINESS.

Section 197.—The following is the Order of Business, which, however, may be transposed to suit the convenience of the branch, but no order must be left out or otherwise changed:

1. Marshal to make requisite examination and report to the proper officer.
2. The branch to open in due form.

3. The roll of officers called and those present and absent noted.
4. Reading of the minutes of the last regular and intervening meetings.
5. Initiation of elected candidates.
6. Report of Trustees and balloting for candidates.
7. Applicants for membership and reference for investigation.
8. Reports as to sick brothers or brothers' families in distress.
9. Reading of communications, notices and bills.
10. Report of special and standing committees.
11. Notices of unemployed brethren.
12. Unfinished business.
13. New business.
14. Payment of dues and assessments.
15. Good of the Association.
16. Financial Secretary's report of receipts.
17. Recording Secretary's report of orders drawn and Treasurer's report of disbursements and presentation of vouchers for deposits.
18. Close in due form.

METHOD OF BALLOTING.

Under this order of business, the Marshal shall first report the number of members present, which the Secretary will record; he shall then examine the ballot-box to see that it is correct, and also allow the President to examine it at his station; the President shall then cast his ballot; the Marshal shall then proceed with the ballot-box to the First Vice-President, Second Vice-President, and Chancellor, respectively, that they may vote without leaving their stations; the Marshal shall then place the box on the central pedestal with the opening toward the First

Vice-President's station, cast his vote and resume his position and retain it until the President declares the ballot closed. Balloting should proceed, commencing at the right of the Chair, and no member shall be nearer than six feet to a member balloting under penalty of a reprimand or fine; every member must vote unless excused by a majority vote. If it shall appear that the balls are all white, or that not more than two black balls for the first ten members present and entitled to vote, are cast, or no more than one black ball in addition to said two of each additional ten members or fraction thereof present and entitled to vote, the applicant shall be declared elected. If in the first ballot a candidate is blackballed, a second ballot shall be had on same candidate, before which the President may allow such time as he considers proper for explanations to obviate mistake or certify identity, but no member shall say how he voted. When the Chair raps for order, debate shall cease, the second ballot will be immediately proceeded with, and its decision shall be final; no explanations, reconsiderations, appeals or debates shall be allowed upon it. The declaration of vote shall be made as follows: When the Chair asks, "Have all voted?" and no one rises to vote, he will say, "I declare the ballot closed." The Marshal then proceeds with the ballot box to the First and Second Vice-Presidents' and Chancellor's stations respectively; they examine the ballot, the Marshal then allows the President to examine the same, who thereupon says: "Brother First Vice-President, how do you find the ballot?" The First Vice-President responds, "favorable" or "unfavorable," as the case may be. The President then asks the Second Vice-President and Chancellor the same question, and they respond in like manner. If there is any disagreement on count, all the said officers shall proceed to the central pedestal and examine the ballot box. If they all agree, and the ballot is favorable,

the President says, "Favorable here; I declare——
——— duly elected a member of Branch No. —, of
the Catholic Mutual Benefit Association of Canada,
and upon being initiated, signing the roll and the
payment of beneficiary and dues, he will become
entitled to all the rights and privileges of this As-
sociation" If rejected the Chair simply states, "I
declare —— ——— duly rejected; the Secretary
will return to him his application fee." Same de-
claration of rejection shall be made in case of an
unfavorable report of Trustees on a candidate.

INITIATION.

The lessons of initiation are based upon Faith, Hope and Charity. Cover pedestals at each station with a white cloth, two lighted candles upon same, between which place at President's station a black cross—Faith. At the First Vice-President's station an Anchor—Hope. And at the Chancellor's station a Heart—Charity.

When the time for initiation is reached, if there be a candidate or candidates, the initiation shall proceed as follows. When a priest is to be initiated, the following ceremony is to be dispensed with, except the signing of the roll-book and payment of monthly beneficiary payment and dues:

A suitable selection of simple church hymns should be provided to be sung during marches, and at other proper times during initiation ceremonies.

PRESIDENT—Brother Marshal, please ascertain whether there are candidates in waiting for initiation.

MARSHALL—Brother President, I shall ascertain.

After saluting the Chair, the Marshal proceeds to the ante-room, and on returning says:

MARSHALL — Brother President, I find Messrs. ——— are waiting to be initiated as members of Branch No. —, of the Catholic Mutual Benefit Association of Canada.

If there be no candidates in waiting, the Marshal shall so report and the business will proceed.

PRESIDENT—Brother Recording Secretary, have Messrs. ——— been duly elected members of this branch?

RECORDING SECRETARY—Brother President, they have been duly elected members (or not, as the case may be).

PRESIDENT—Brother Financial Secretary, you will accompany the Marshal to the ante-room and collect from the candidates one monthly beneficiary payment and one month's dues.

The Financial Secretary, upon returning from the ante-room, advances with the Marshal to the central pedestal, salutes and says:

FINANCIAL SECRETARY—Brother President, in obedience to your command I have collected from Messrs. ——— one monthly beneficiary payment and one month's dues.

The Financial Secretary and Marshal then return to their stations.

PRESIDENT—Brother Chancellor, I am informed by the Marshal and the Financial Secretary that Messrs. — — are waiting in the ante-room to be initiated into this branch; they have been duly elected and have paid the required payments and dues, and if there is no objection the initiation will now proceed.

The President awaits objection; if there is none he says:

PRESIDENT—Brother Chancellor, proceed to the ante-room, ask the candidates the necessary questions, call attention to the solemn obligation they are about to take and see if they are fit candidates to be enrolled as members of this Association.

Chancellor advances to central pedestal, salutes the President, and says:

CHANCELOR—Brother President, as directed by you, I will enquire as to the fitness of the candidates.

The Chancellor then goes to the ante-room and asks candidates the following questions:

CHANCELOR—Candidates, you are now about to become members of the Catholic Mutual Benefit Association of Canada. Before taking the obligations of our Association you are required to faithfully answer the following questions; if at any time in the future it is discovered you make untrue answers, you forfeit all rights to membership in our Association.

1—Are you practical Catholics as defined by our Holy Church?

2—Did you perform your last Easter duty?

3—Are the statements made by you in your application and medical certificate true?

4—Do you hold membership in the order of Free Masons, Odd Fellows, Knights of Py-

thias, or any other order or society disapproved or condemned by our Holy Church?

5—Have you ever been a member of this Association? (If so, candidates will state the branch, together with the cause of leaving, etc.)

Candidates should be required to pay strict attention and must not be permitted to converse with one another during initiation ceremonies, either in the ante-room or branch chamber.

The Chancellor will then enter the branch chamber, advance to the central pedestal, salute the Chair, and say:

CHANCELLOR—Brother President, the candidates have answered all questions satisfactorily and are fit and willing to become enrolled as members of this Association.

After the Chancellor enters the ante-room, the Guard will permit no one to enter until candidates have been taken into the branch chamber, and then only those who are members.

PRESIDENT—Brother Marshal, fortify yourself with all the necessary articles and able assistants, in preparing the candidates for admission to the branch chamber.

The Marshal then retires to the ante-room, prepares the candidates, blindfolds them, places them in single file, himself leading, and advancing to the ante-room door gives three raps.

GUARD (on the inside) says—Who comes there?

MARSHALL—It is I, with fit and willing candidates who seek admission to our ranks.

GUARD—Brother President, the Marshal is at the door with fit and willing candidates who seek admission to our ranks.

All lights will now be put out or turned low as possible, except the candles on the pedestals.

PRESIDENT—Brother Guard, allow the Marshal with the candidates to enter.

The initiatory ode will now be sung.

The Marshal leads the candidates around the chamber to a point opposite the President.

MARSHALL—Brother President, I present to you some worthy Catholic men who seek admission to our ranks; they come of their own free will and thus far they have complied with every requirement.

PRESIDENT—My friends, I bid you welcome. The Worthy Marshal will uncover your eyes while with this emblem (takes up the Cross) of our salvation, I call your attention to the first of the three divine virtues upon which as a society of Catholic men our Association rests—Faith. To lead a well-ordered life here and to attain to our true destiny hereafter, it is necessary to know God. To gain this knowledge is our first duty here below, and it is brought to us through Faith in the truths which God has revealed. Christian Faith is that firm conviction brought to our souls by the grace of

God that all that Jesus Christ taught on earth is true, as well as all that the Catholic Church teaches by the commission she has received from Him. Know then and try each day to realize more and more that our Faith is a precious gift of God that we must cherish above all gifts. It is a glorious light that we must let shine before men that they may see our works and glorify our Father who is in heaven. Let your Faith, therefore, be at all times firm, living, active, that men seeing your well-ordered lives may know that you have the faith of Jesus Christ.

Then delivering the Cross to the Marshal the President says:

PRESIDENT—Take the Cross, Brother Marshal, and conduct our friends to the First Vice-President.

Eyes of candidates covered again. On arrival at the First Vice-President's station:

MARSHAL—Brother First Vice-President, our Brother President bids me present to you these worthy Catholic men, with this Cross, emblematic of our faith.

Places cross on the pedestal beside the Anchor. Removes blindfolds.

FIRST VICE-PRESIDENT—My friends, I echo the welcome of our Brother President just expressed to you. I receive the Cross you brought me from him and placed beside the

Anchor before you which is emblematic of Hope, the second of the three divine virtues. The foundation of Christian Hope is Faith. By Faith we know that God, our Father, is infinitely true, infinitely powerful and infinitely good. Christian Hope, therefore, is the confident expectation of all those things which Christ has promised us with regard to the fulfilment of God's holy will. The fulfilment of God's will brings God's grace, temporal goods to sustain life, the forgiveness of sins, help in our necessities and answer to our prayers. Carry out God's will and you can with full confidence hope for all the blessings promised by Christ. This hope will fill you with a wholesome fear of falling into sin. For trust in God and distrust of ourselves are like the two arms of a balance, as one rises the other goes down; the more we distrust ourselves, the more we confide in God. As with Faith, so it is with Hope; we can attain to it only by the sanctifying grace of God. The nearer we come to the time of our departure the more our hope should expand, like the river becoming wider as it approaches the sea. Hope makes you patient and courageous in suffering, and above all in the face of death. Hold fast, therefore, to this true anchor of the soul.

Candidates, you are brought hither to this branch chamber blindfolded, deprived of the sight with which you have been endowed from

birth, you then could realize an infinitesimal part of the vague dread and uncertainty which prevails in the absence of sight, one of God's most priceless gifts, cherished as unto life, you stand here in numbers, yet you are as one bereft of the senses; bewilderment enfolds you; a touch, a sound, causes an agony of apprehension, you dread what the future moments hold in store. To attempt to struggle in darkness, of what avail your strength, your cunning, your courage? In this crisis, we would have you pause, and passing beyond this momentary physical loss, consider your condition as exemplifying the state of man's soul before receiving the light of divine faith. By this faith the scales are removed from the eyes of the soul and it is raised from the natural to the supernatural, and is enabled to obtain that heavenly bliss, prepared by God, for His angels and His saints.

The holy Apostles, though poor, uneducated men, were imbued with the wisdom of the Holy Ghost, confounded the wisest of the ancients, princes, philosophers and scribes, who were possessed of the highest worldly philosophy, the polished sophistry of centuries. This lesson, then, should impress upon you the grandeur of our holy religion, that religion which elevates the soul from the natural to the supernatural and makes it heir to God's Holy

Kingdom. You will now repeat with me the articles of that faith, the Apostles' Creed:

I believe in God, the Father Almighty,—Creator of heaven and earth,—and in Jesus Christ, His only Son, our Lord—Who was conceived by the Holy Ghost,—born of the Virgin Mary,—suffered under Pontius Pilate,—was crucified, dead, and buried.—He descended into hell,—the third day He arose again from the dead.—He ascended into Heaven,—and sitteth at the right hand of God, the Father Almighty,—from thence he shall come to judge the living and the dead.—I believe in the Holy Ghost,—the Holy Catholic Church,—the communion of saints,—the forgiveness of sins,—the resurrection of the body—and the life everlasting.—Amen.

The Worthy Marshal will now have the blindfolds replaced on the candidates' eyes and conduct them to the Chancellor.

The Marshal will take the Cross and Anchor and conduct the candidates to the Chancellor's station, where he will place the emblems on the pedestal—the Cross in the centre, the candles in front. The eyes of the candidates are again uncovered.

MARSHAL.—Brother Chancellor, in behalf of these worthy Catholic men who seek admission to our ranks, I offer the Cross of Faith, the Anchor of Hope, to be placed with the emblem of your station, the Flaming Heart emblematic of Charity.

CHANCELLOR — My friends, the house of God, which is the holiness that leads to salvation, is founded in Faith, built upon Hope, and finished in Love. Our Divine Master teaches us: "Thou shalt love the Lord, thy God, with thy whole heart, with thy whole soul and with thy whole mind, and with thy whole strength." This is the first commandment. And the second is like to this: "Thou shalt love thy neighbor as thyself." Know then that he who fulfils these two commandments of charity keeps all the Commandments, and he who is without the love of God and his neighbor cannot be saved. If any man says, "I love God, and hateth his brother, he is a liar," says St. John. Our love of our neighbor is therefore the best test of our love of God. Our love of God teaches us to think of Him, tells us to avoid what might separate us from Him, and urges us to labor to promote His glory, and helps to accept willingly all that comes from His hand. This same charity necessarily teaches us to love our fellowmen. We must love our neighbor because we see our Lord in his person, and from this high motive we are to be ready at all times to do good to him. Let this, therefore, be ever the quality of our charity. For know well that Charity is the one eternally abiding virtue. Our Faith will one day be turned into knowledge. Our hope will cease in the realization of Christ's promises, but our Charity will live

forever in loving God and His holy ones in heaven.

The candidates will now be conducted to the President's station, where the covers are removed from their eyes.

When the candidates are placed before the President the lights are all turned on and the candle removed from the central pedestal.

The candidates will be placed far enough back from the President's station to give room for him to deliver the charge and obligation on the floor of the chamber.

PRESIDENT — Candidates, carefully observe what is stated to you in this chamber, so that you will become acquainted with our laws, rules and objects. You will observe the sign (pointing to the Cross) above our station; it is emblematic of faith. The worthy First Vice-President has had you repeat the articles of that faith. There is but one faith and one Church; we look to that Church for advice and support; if you fail to comply with the requirements of that Church, as to your duty as a practical Catholic, you will also cease to be a member here. You will notice the clasped hands under the Cross, emblematic of brotherly love and unity. Brotherly love, not the inordinate passion, but that beautiful, amiable, unselfish heart in unison with faith, which makes those who are possessed of it shine as stars in the firmament. This was the love and unity which inspired those Christian soldiers known as the saints of the Church. These em-

blems should inspire you and be constantly a reminder of your conduct in your daily walk of life. Possess this virtue and your lives will shine brilliantly amongst your fellow-men.

I will now administer our obligation to you; you will please repeat it after me:

I sincerely promise—in the presence of these witnesses—that I will not knowingly—wrong or defraud—the Catholic Mutual Benefit Association of Canada—nor any of its branches or members;—that I will not disclose to any person—not a member of this Association—the fact of a rejection of a candidate—or the vote of any member of the Association—upon the application for membership—or upon any motion or resolution—or any remarks or debate—on any question or proceeding of the Association—or divulge the contents of any paper therein read—or action or debate thereon;—that I will faithfully obey and observe—the provisions of the constitution—by-laws—rules of order—and code of procedure of the Association—decrees of the Grand Council—or Grand President—and the orders of all officers of the Association—or this branch—or any branch of which I may hereafter become a member;—that I will use due diligence—in becoming acquainted—with all the laws of the Association—and that I will so far as my means will allow—aid and assist—all needy and distressed members of this Association—

their widows and orphans—provided such assistance—will not injure myself or my family—and that I will never reveal to any person—what may transpire or occur in the branch chamber—except to those in ecclesiastical authority;—I most solemnly bind myself—with the Divine assistance—to keep and perform this obligation.

PRESIDENT—Brother Marshal, conduct the candidates to the Chancellor that they may receive the admonition.

CHANCELLOR—Candidates, you have taken the obligation of the Catholic Mutual Benefit Association of Canada, and now you are further requested to promise that you will uphold, by all means at your command, the teachings and dogmas of our holy mother the Church, and defend with your talents and your life, if necessary, her regularly-ordained clergy, that you will not sanction or condone insults to their person or holy calling. That you will protect the honor of your fellow-members; that you will put into practice true Christian charity and brotherly love, which are the highest attributes of Catholic men; that you will be sober, industrious and contribute to the happiness of those with whom you come in contact, so that by your example the world may become better, and Catholicity the more fully exemplified. Compassionate the poor, elevate the low-

ly, lighten the burdens of those whom sorrow hath depressed, venerate the aged, guard the young against the evil contaminations of the world, banish from your heart all enmity and ill-feeling towards your fellow-men, tolerate the honest opinions of others, never sanction or approve slanders against this Association or its officers. Wrong it not; never assist or acquiesce in the admission of those who would be unworthy members, through physical or moral disabilities, and perform with all your strength and energy the corporal works of mercy, thereby living a life ennobling before God and a credit to your Church and country. Do you thus promise?

CANDIDATES—We do.

The Marshal will insist upon the candidates promising.

CHANCELLOR—Brother Marshal, conduct the candidates to the Recording Secretary's desk, where they will become enrolled, after which you will take them to the President for further instruction.

The candidates having signed the roll and being again placed opposite the President's station, the President will proceed;

PRESIDENT—I will now deliver to you a copy of our constitution; familiarize yourself with all its sections, so that you may live within our laws, and be ever ready to instruct in its

provisions others and those who are not now members. Work unceasingly to bring others into our fold, particularly those having dependents who are in need of protection.

This gavel which I hold in my hand is the symbol of authority, and the officer holding it must be recognized as the seat of authority in the branch chamber, as in him is the will of the members expressed. Never confound the personality of the individual with his right to authority in wielding it. He is the one chosen to execute our laws, conduct our ceremonies, and unless there is obedience to him, there can be no order, no decorum in our meetings, and the laws of our Association will become a mockery, a farce. One blow of it will cause a member or members to come to order, or to be seated when standing or kneeling; two blows will cause the officer or officers addressed to arise; three blows will cause all the members in the meeting to arise; four blows will cause all members to kneel.

There are two methods of balloting in our Association: one is the written ballot used in the election of officers; the other, the ball ballot used in the election of candidates to membership. The ball ballot is composed of white and black balls; the white elect, the black reject. You will find these balls in the ballot box when prepared by the Marshal.

Your monthly levies shall become due and be payable on the first day of each month in every year, and if they are not paid before the expiration of thirty days thereafter, including the first day of the month, you shall on the thirty-first day thereafter, including the said first day of the month, be and become suspended, and if you die while so suspended your beneficiary shall not be entitled to receive any part of the benefit mentioned in your certificate and shall have no claim on the Association in respect thereof. I will now impart to you the salute or courtesy sign of this Association.

The President will explain and execute the salute, causing the candidates to do the same, after which he will say :

PRESIDENT—This salute shall be given at the central pedestal by all members entering or leaving the branch chamber, and by officers passing to and from the ante-room in the ceremonies of initiation, and by members in their own position having risen to address the Chair. Now, by the power vested in me as President of Branch No. —, I declare you members of the Catholic Mutual Benefit Association of Canada and entitled to all its rights, privileges and benefits.

CLOSING OF MEETING.

PRESIDENT—The time for closing having arrived, let us all join in the closing ode.

Here the closing ode is sung.

PRESIDENT—We will now have our closing prayer by the spiritual adviser or chancellor.

"The Apostles' Creed—Glory be to the Father, etc. May the souls of the faithful departed members, through the mercy of God, rest in peace. Amen. In the Name of the Father," etc.

PRESIDENT—I now declare this meeting adjourned until next ——— evening, at ——— o'clock, in this hall (or elsewhere, as the case may be).

INSTALLATION OF OFFICERS.

The installing officer will take the President's chair, and appoint such assistants as he may deem necessary for the installation ceremonies; he will call the roll of officers-elect. Should any of them be absent, and no good reason offered for their inability to be present, he shall declare their position-elect vacant, and order and conduct an election forthwith to fill the vacancy; he shall have the officers-elect placed in a semi-circle opposite the President's station, the President-elect at the right of the circle, and will address them upon the necessity of their attending to the duties of the office to which each is elected and upon their faithfully performing such duties, at the conclusion of which he will have them take the following obligation, repeating same after him:

INSTALLING OFFICER—"I sincerely promise—that I will perform all the duties—of the office to which I have been elected,—in accordance with the laws,—rules and regulations of this Association,—honestly,—faithfully,—impartially—and without fear or favor;—that I will uphold the honor and dignity of such office,—and of the Association,—and will not absent myself—from the meetings of the branch,—unless through sickness or other unavoidable cause;—that I will make myself acquainted—with all the laws governing the officers of this branch,—assist in preserving order and decorum in the branch chamber,—and that I will carefully guard the interests of the Association,—and immediately report to the Pre-

sident of this branch,—or the Grand President, —any attempt at imposition or fraud—upon this Association,—which may come to my knowledge.”

INSTALLING OFFICER—Brother President, I tender to you this gavel, which you will always use with discretion and honor in maintaining order and decorum in the meetings of the branch; I also tender to you these Ceremonials which you will keep securely, permitting no person to read them, except the regularly-elected officers in the branch chamber or officers appointed *pro tem.*; and now I declare you duly elected and installed President of Branch No. — of the Catholic Mutual Benefit Association of Canada, for the term ending December 31st of the present year, and until your successor is installed and qualified.

Brother First and Second Vice-Presidents, in case of the absence or inability of the President to use this gavel, you will use it as I have directed him, and I now declare you and each of you duly elected and installed as First and Second Vice-Presidents of Branch No. — of the Catholic Mutual Benefit Association of Canada, for the term ending December 31st of the present year, and until your successors are installed and qualified.

Brother Recording Secretary, to you I deliver the seal and book of records of this

branch, and charge you and the assistant secretary to keep their contents, as well as all correspondence of the branch, secret, except to the proper officers of the Association, or this branch, or the members thereof. who are entitled to see them in the branch chamber. I declare you and your worthy assistant duly elected and installed Recording Secretary and Assistant Secretary of Branch No. — of the Catholic Mutual Benefit Association of Canada for the term ending December 31st of the present year, and until your successors are installed and qualified.

Brother Financial Secretary and Treasurer, I deliver to you the books of your respective offices and charge you that there is no duty more sacred than that of guarding carefully trust funds, entering them in your books and transferring and paying them out strictly in accordance with law. I now declare you and each of you duly elected and installed as Financial Secretary and Treasurer, respectively, of Branch No. — of the Catholic Mutual Benefit Association for the term ending December 31st of the present year, and until your successors are installed and qualified.

Brother Marshal and Guard, in accordance with the obligation you have just taken to perform the duties of your respective offices honestly, faithfully, impartially and without

fear or favor, I now declare you and each of you duly elected and installed as Marshal and Guard respectively of Branch No. — of the Catholic Mutual Benefit Association of Canada for the term ending December 31st of the present year, and until your successors are installed and qualified.

Brother Trustees, the duties of your office are most important, particularly those which relate to the admission of new members. The law makes it your duty to carefully investigate the character and fitness of applicants for membership. The application and medical blanks of the Association provide statements to be made and questions answered by every applicant in regard to his age, occupation, family history, habits and physical condition. Let your investigation of every applicant be such as to satisfy you that those statements and answers are true, and that you consider him a fit person for membership before you give your approval to his application, to the end that none but duly qualified, practical Catholic men may gain admission to our ranks. I now declare you and each of you duly elected and installed as Trustees of Branch No. — of the Catholic Mutual Benefit Association of Canada for the term for which you were elected, and until your successors are installed and qualified.



