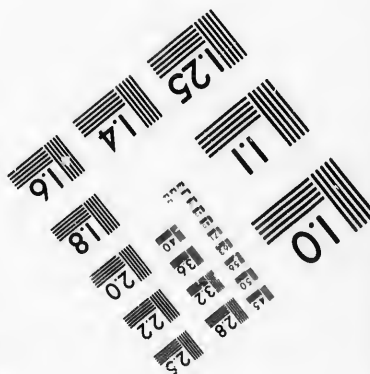
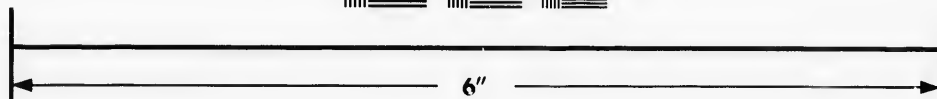
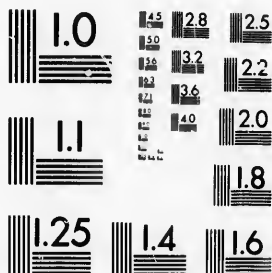


IMAGE EVALUATION TEST TARGET (MT-3)



Photographic
Sciences
Corporation

23 WEST MAIN STREET
WEBSTER, N.Y. 14580
(716) 872-4503

**CIHM/ICMH
Microfiche
Series.**

**CIHM/ICMH
Collection de
microfiches.**



Canadian Institute for Historical Microreproductions / Institut canadien de microreproductions historiques

© 1987

Technical and Bibliographic Notes/Notes techniques et bibliographiques

The Institute has attempted to obtain the best original copy available for filming. Features of this copy which may be bibliographically unique, which may alter any of the images in the reproduction, or which may significantly change the usual method of filming, are checked below.

L'Institut a microfilmé le meilleur exemplaire qu'il lui a été possible de se procurer. Les détails de cet exemplaire qui sont peut-être uniques du point de vue bibliographique, qui peuvent modifier une image reproduite, ou qui peuvent exiger une modification dans la méthode normale de filmage sont indiqués ci-dessous.

- ☐ Coloured covers/
Couverture de couleur
- ☐ Covers damaged/
Couverture endommagée
- ☐ Covers restored and/or laminated/
Couverture restaurée et/ou pelliculée
- ☐ Cover title missing/
Le titre de couverture manque
- ☐ Coloured maps/
Cartes géographiques en couleur
- ☐ Coloured ink (i.e. other than blue or black)/
Encre de couleur (i.e. autre que bleue ou noire)
- ☐ Coloured plates and/or illustrations/
Planches et/ou illustrations en couleur
- ☐ Bound with other material/
Relié avec d'autres documents
- ☐ Tight binding may cause shadows or distortion
along interior margin/
La reliure serrée peut causer de l'ombre ou de la
distorsion le long de la marge intérieure
- ☐ Blank leaves added during restoration may
appear within the text. Whenever possible, these
have been omitted from filming/
Il se peut que certaines pages blanches ajoutées
lors d'une restauration apparaissent dans le texte,
mais, lorsque cela était possible, ces pages n'ont
pas été filmées.
- ☒ Additional comments:/ [Printed ephemera] [3] p.
Commentaires supplémentaires:

- ☐ Coloured pages/
Pages de couleur
- ☒ Pages damaged/
Pages endommagées
- ☐ Pages restored and/or laminated/
Pages restaurées et/ou pelliculées
- ☒ Pages discoloured, stained or foxed/
Pages décolorées, tachetées ou piquées
- ☐ Pages detached/
Pages détachées
- ☒ Showthrough/
Transparence
- ☐ Quality of print varies/
Qualité inégale de l'impression
- ☐ Includes supplementary material/
Comprend du matériel supplémentaire
- ☐ Only edition available/
Seule édition disponible
- ☐ Pages wholly or partially obscured by errata
slips, tissues, etc., have been refilmed to
ensure the best possible image/
Les pages totalement ou partiellement
obscurcies par un feuillet d'errata, une pelure,
etc., ont été filmées à nouveau de façon à
obtenir la meilleure image possible.

This item is filmed at the reduction ratio checked below/
Ce document est filmé au taux de réduction indiqué ci-dessous.

10X	14X	18X	22X	26X	30X
<input type="checkbox"/>	<input type="checkbox"/>	<input type="checkbox"/>	<input type="checkbox"/>	<input checked="" type="checkbox"/>	<input type="checkbox"/>
12X	16X	20X	24X	28X	32X

The copy filmed here has been reproduced thanks to the generosity of:

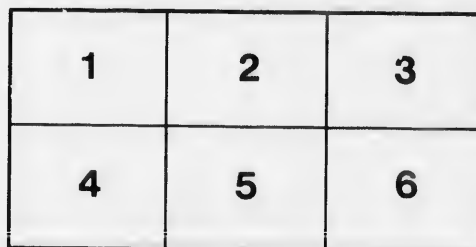
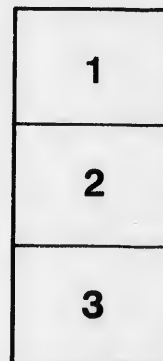
Harold Campbell Vaughan Memorial Library
Acadia University

The images appearing here are the best quality possible considering the condition and legibility of the original copy and in keeping with the filming contract specifications.

Original copies in printed paper covers are filmed beginning with the front cover and ending on the last page with a printed or illustrated impression, or the back cover when appropriate. All other original copies are filmed beginning on the first page with a printed or illustrated impression, and ending on the last page with a printed or illustrated impression.

The last recorded frame on each microfiche shall contain the symbol → (meaning "CONTINUED"), or the symbol ▼ (meaning "END"), whichever applies.

Maps, plates, charts, etc., may be filmed at different reduction ratios. Those too large to be entirely included in one exposure are filmed beginning in the upper left hand corner, left to right and top to bottom, as many frames as required. The following diagrams illustrate the method:



L'exemplaire filmé fut reproduit grâce à la générosité de:

Harold Campbell Vaughan Memorial Library
Acadia University

Les images suivantes ont été reproduites avec le plus grand soin, compte tenu de la condition et de la netteté de l'exemplaire filmé, et en conformité avec les conditions du contrat de filmage.

Les exemplaires originaux dont la couverture en papier est imprimée sont filmés en commençant par le premier plat et en terminant soit par la dernière page qui comporte une empreinte d'impression ou d'illustration, soit par le second plat, selon le cas. Tous les autres exemplaires originaux sont filmés en commençant par la première page qui comporte une empreinte d'impression ou d'illustration et en terminant par la dernière page qui comporte une telle empreinte.

Un des symboles suivants apparaîtra sur la dernière image de chaque microfiche, selon le cas: le symbole → signifie "A SUIVRE", le symbole ▼ signifie "FIN".

Les cartes, planches, tableaux, etc., peuvent être filmés à des taux de réduction différents. Lorsque le document est trop grand pour être reproduit en un seul cliché, il est filmé à partir de l'angle supérieur gauche, de gauche à droite, et de haut en bas, en prenant le nombre d'images nécessaire. Les diagrammes suivants illustrent la méthode.

Ar. Gold

1 333.41
N83-

GOLD FIELDS.

REPORT.

REPORT.

(COPY.)

*Chief Gold Commissioner's Office,
Halifax, July 28, 1863.*

SIR,—I have the honor to submit the following semi-annual report for the information of his Excellency the Lieutenant-Governor. It contains a short account of the gold mining operations in Nova Scotia for the half year ending on the 30th June last.

DISCOVERIES.

As gold mining in the Province is every day assuming a more settled and permanent form, the report of a discovery of gold in a certain district does not occasion such a wide spread excitement as formerly. The consequence is, that upon the opening of a new district, capitalists have a much better opportunity of securing a greater scope of ground for their operations than is possible when a large number of applicants for leases are attracted by the report of a recent discovery. This has plainly been the result at Montagu.

A report of the discovery of gold in this place was made here on the 21st day of April, and although 203 acres of class No. one have been leased, 150 of these, or about the three-fourths of the whole, have been taken by four companies.

In this district about one hundred men have been employed during the past month. Two crushing machines are in course of erection in it; and the parties engaged in mining generally, speak with the highest confidence of success in their undertaking. Thirty-eight and three-quarter tons of the quartz mined have been crushed at some of the mills at Waverley, and have yielded 116.85 oz. of gold, being an average of three ounces to the ton; and the New York and Nova Scotia company have procured from specimens, and by hand mortaring, one thousand dollars worth.

The richest vein in the district as yet discovered is about three inches in thickness, but there are numerous leads varying in size from that to a foot, which have proved auriferous, and the district is now undergoing a thorough prospecting.

Over half a mile of road has been made in the district at the government expense, costing \$206, and a further expenditure is required.

OTHER DISTRICTS.

Without making any particular reference to the result of mining operations in the several districts which were proclaimed last year, I beg to refer for information in respect to them to the tables herewith enclosed.

Table No. 1 shows the quantity of quartz crushed, and the yield of gold therefrom, in the several districts therein named. The average yield per ton being a trifle over an ounce, which is below the average of last year; but it must be borne in mind, that in quartz reported as crushed at Sherbrooke and Wine Harbour, a large quantity of gravel or rubbish is included, the exact amount of which I am not able at present to ascertain. There is, therefore, no reason to conclude that the average yield of gold per ton of quartz is much, if any, below that of 1862.

By table No. 2, it appears that the yield of gold per man employed in the mines, is 8.38 oz. for the six months, which shews a higher average of 2.78 oz. for a year than the calculation was for 1862. (See page 29, Gold Commissioner's Report, 1862.)

No. 3 refers to Waverley, by which it appears that the barrel quartz crushed in that district has not yielded equal to that in 1862. The yield from the West division is also a trifle below that of last year.

Table No. 4 shews the total yield of gold in all the districts as reported, to be 5,193 ounces.

When it is taken into consideration that a large proportion of the labor expended during the past six months is preparatory to the operations of the latter half of the year, it may be said that the results of the half year's operations have been successful. And I may safely add, the prospects at present indicate a much larger return of gold for that part of the year to come than has been obtained in that just terminated.

I have, Sir, the honor to be,

Your most obedient servant,

SAMUEL CREELMAN.

The Hon. Provincial Secretary.

[For tables referred to above, see Appendix A (1, 2, 3, 4,) to Commissioner's Annual Report for 1863.]

