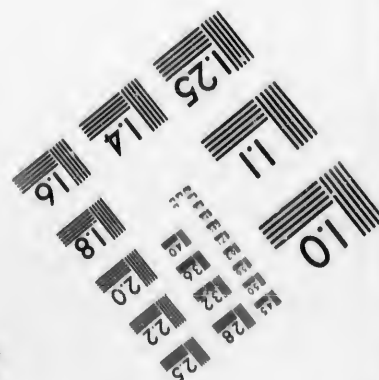
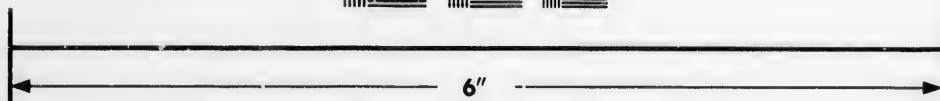
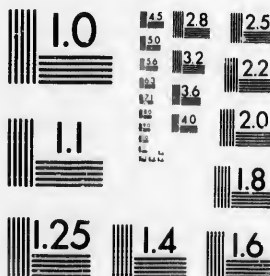


**IMAGE EVALUATION
TEST TARGET (MT-3)**



**Photographic
Sciences
Corporation**

23 WEST MAIN STREET
WEBSTER, N.Y. 14580
(716) 872-4503

25
28
32
36
40
22
20
18

**CIHM/ICMH
Microfiche
Series.**

**CIHM/ICMH
Collection de
microfiches.**



Canadian Institute for Historical Microreproductions / Institut canadien de microreproductions historiques

10

© 1987

Technical and Bibliographic Notes/Notes techniques et bibliographiques

The Institute has attempted to obtain the best original copy available for filming. Features of this copy which may be bibliographically unique, which may alter any of the images in the reproduction, or which may significantly change the usual method of filming, are checked below.

L'Institut a microfilmé le meilleur exemplaire qu'il lui a été possible de se procurer. Les détails de cet exemplaire qui sont peut-être uniques du point de vue bibliographique, qui peuvent modifier une image reproduite, ou qui peuvent exiger une modification dans la méthode normale de filmage sont indiqués ci-dessous.

- Coloured covers/
Couverture de couleur
- Covers damaged/
Couverture endommagée
- Covers restored and/or laminated/
Couverture restaurée et/ou pelliculée
- Cover title missing/
Le titre de couverture manque
- Coloured maps/
Cartes géographiques en couleur
- Coloured ink (i.e. other than blue or black)/
Encre de couleur (i.e. autre que bleue ou noire)
- Coloured plates and/or illustrations/
Planches et/ou illustrations en couleur
- Bound with other material/
Relié avec d'autres documents
- Tight binding may cause shadows or distortion along interior margin/
La reliure serrée peut causer de l'ombre ou de la distorsion le long de la marge intérieure
- Blank leaves added during restoration may appear within the text. Whenever possible, these have been omitted from filming/
Il se peut que certaines pages blanches ajoutées lors d'une restauration apparaissent dans le texte, mais, lorsque cela était possible, ces pages n'ont pas été filmées.
- Additional comments:/
Commentaires supplémentaires:

- Coloured pages/
Pages de couleur
- Pages damaged/
Pages endommagées
- Pages restored and/or laminated/
Pages restaurées et/ou pelliculées
- Pages discoloured, stained or foxed/
Pages décolorées, tachetées ou piquées
- Pages detached/
Pages détachées
- Showthrough/
Transparence
- Quality of print varies/
Qualité inégale de l'impression
- Includes supplementary material/
Comprend du matériel supplémentaire
- Only edition available/
Seule édition disponible
- Pages wholly or partially obscured by errata slips, tissues, etc., have been refilmed to ensure the best possible image/
Les pages totalement ou partiellement obscurcies par un feuillet d'errata, une pelure, etc., ont été filmées à nouveau de façon à obtenir la meilleure image possible.

This item is filmed at the reduction ratio checked below/
Ce document est filmé au taux de réduction indiqué ci-dessous.

10X	12X	14X	16X	18X	20X	22X	24X	26X	28X	30X	32X
				✓							

The copy filmed here has been reproduced thanks to the generosity of:

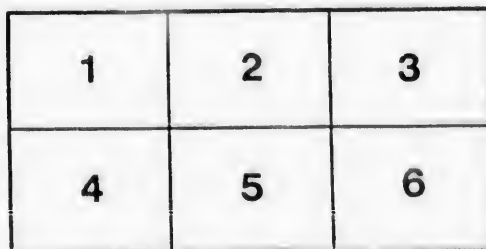
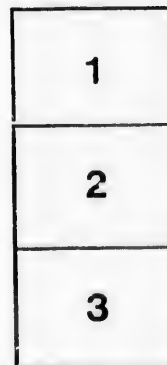
Metropolitan Toronto Library
Canadian History Department

The images appearing here are the best quality possible considering the condition and legibility of the original copy and in keeping with the filming contract specifications.

Original copies in printed paper covers are filmed beginning with the front cover and ending on the last page with a printed or illustrated impression, or the back cover when appropriate. All other original copies are filmed beginning on the first page with a printed or illustrated impression, and ending on the last page with a printed or illustrated impression.

The last recorded frame on each microfiche shall contain the symbol \rightarrow (meaning "CONTINUED"), or the symbol ∇ (meaning "END"), whichever applies.

Maps, plates, charts, etc., may be filmed at different reduction ratios. Those too large to be entirely included in one exposure are filmed beginning in the upper left hand corner, left to right and top to bottom, as many frames as required. The following diagrams illustrate the method:



L'exemplaire filmé fut reproduit grâce à la générosité de:

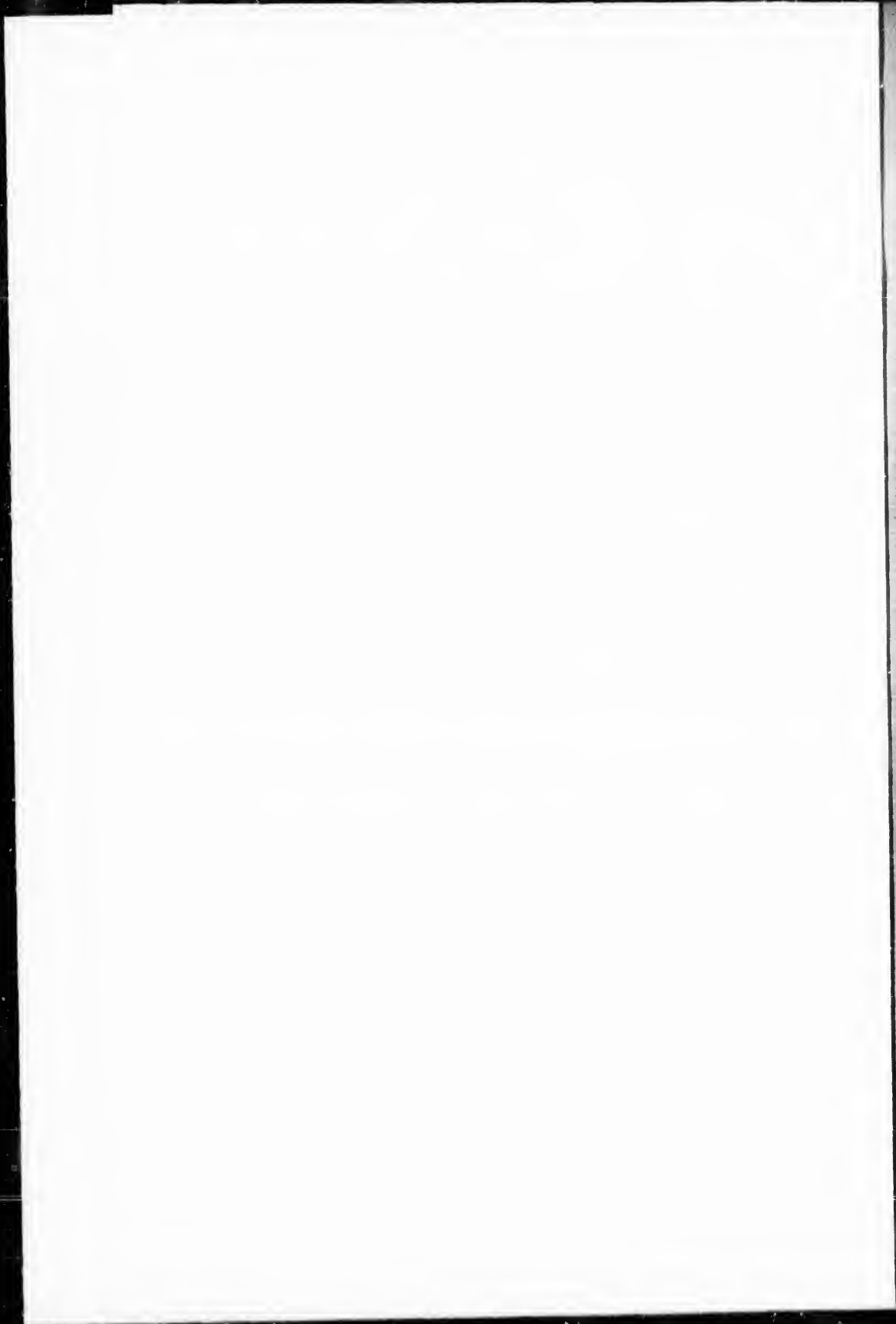
Metropolitan Toronto Library
Canadian History Department

Les images suivantes ont été reproduites avec le plus grand soin, compte tenu de la condition et de la netteté de l'exemplaire filmé, et en conformité avec les conditions du contrat de filmage.

Les exemplaires originaux dont la couverture en papier est imprimée sont filmés en commençant par le premier plat et en terminant soit par la dernière page qui comporte une empreinte d'impression ou d'illustration, soit par le second plat, selon le cas. Tous les autres exemplaires originaux sont filmés en commençant par la première page qui comporte une empreinte d'impression ou d'illustration et en terminant par la dernière page qui comporte une telle empreinte.

Un des symboles suivants apparaîtra sur la dernière image de chaque microfiche, selon le cas: le symbole \rightarrow signifie "A SUIVRE", le symbole ∇ signifie "FIN".

Les cartes, planches, tableaux, etc., peuvent être filmés à des taux de réduction différents. Lorsque le document est trop grand pour être reproduit en un seul cliché, il est filmé à partir de l'angle supérieur gauche, de gauche à droite, et de haut en bas, en prenant le nombre d'images nécessaire. Les diagrammes suivants illustrent la méthode.



T.R.

1868
MAY 15
MILLS

CATALOGUE

P. 716
OF
.G. 67

GREEN HOUSE PLANTS,

CARNATIONS,

PICOTEES, DOUBLE DAHLIAS, &c.

CULTIVATED AND FOR SALE

BY JOHN GRAY, AT THE GRANGE CONSERVATORIES,

TORONTO, C.W.

Toronto:

PRINTED AT THE HERALD OFFICE, 36 $\frac{1}{2}$, YONGE-STREET.

1846.

CATALOGUE

CATALOGUE

GREEN HOUSE PLANTS
GREEN HOUSE PLANTS

CATALOGUE

CATALOGUE

ROBERT DOBBS DANIELS & CO.

ROBERT DOBBS DANIELS & CO.

CULTIVATED AND FOR SALE

CULTIVATED AND FOR SALE

BY JOHN GRAY AT THE GRAND CONSERVATORIES

ROBERT DOBBS DANIELS & CO.
TORONTO CAN.

ROBERT DOBBS DANIELS & CO.

PRINTED AT THE PRESS OF THE UNIVERSITY OF TORONTO

CATALOGUE
OF
GREEN HOUSE PLANTS,
CARNATIONS,
PICOTEES, DOUBLE DAHLIAS, &c.

CULTIVATED AND FOR SALE

BY JOHN GRAY, AT THE GRANGE CONSERVATORIES,

TORONTO, C.W.

Toronto:

PRINTED AT THE HERALD OFFICE, 36½, YONGE-STREET.

1846.

993566



JUN 13 1935

CATALOGUE
 OF
GREEN HOUSE PLANTS,
CARNATIONS,
PICOTEES, DOUBLE DAHLIAS, &c.,

CULTIVATED AND FOR SALE BY
JOHN GRAY, AT THE GRANGE CONSERVATORIES,
TORONTO, C. W.

Botanic Names.	Common Names.	Price.	
		<i>s.</i>	<i>d.</i>
Agapanthus umbellatus	Umbelled blue African lilly.....	2	6 a 5 0
—Striata	Striped leaved do...	0	0 5 0
Agave Americana	American aloe,....	2	6 10 0
Aloe arborescens	Tree aloe	2	6 0 0
—variegata	Partridge breast, do.	1	3 0 0
—succotrina	Bitter aloe,.....	1	3 0 0
—verucosa	Warted do.	2	0 0 0
Aloisa Citriodora	Lemon scented verbena,.....	1	3 2 6
Alonsoa urticifolia	Nettle leaved do ..	1	3 2 5
Amaryllis belladonna	Belladonna lilly,....	0	0 5 0
—Johnsonia	Splendid striped do.	2	6 5 0
—formosissima	Jacobeia lilly.....	0	0 5 0
—sarniensis	Guernsey do.	2	6 5 0
—longifolia	Long leaved do. ...	2	6 0 0
Aucuba Japonica	Japan gold dust tree	2	6 5 0
Abutilon striata	Spotted flowered do.	2	6 7 6

Botanic names.	Common Names.	Price
Azalea Indica	
—alba	White Indian azalea	7 6 a 12 6
—Phœnicia	Bluish purple do ..	0 0 10 0
—sinensis	Chinese yellow do.	0 0 12 6
—variegata	Variegated do.	0 0 10 0
Begonia	Ear Plant	
—evansiana	Two col'd do.	2 6 0 0
—Argyrostigma	Crook leaved do.	2 6 0 0
Bletia tankervillea	Hyacinth bletia,	5 0 0 0
Bignonia capensis	Cape trumpet flower	1 3 7 6
Buonapartea juncea	Rush leaved do ...	0 0 7 6
Calla Æthiopica	Egyptian lilly,	1 3 0 0
Calceolaria	Slipper wort,	0 0 0 0
—meteor	Superb bronze,	2 6 5 0
—bicolor	Straw and white do.	1 3 2 6
—grandiflora	Large flowering do.	3 9 0 0
—aurea	Golden yellow,	2 6 5 0

Camellia Japonica, Japan Rose.

Several fine varieties	at.....	7 6	20 0
Caecalia articulata	Jointed Cacalia, ...	1 3	0 0
Cactus Macnabalis	0 0	2 6
—Cespitosa	Close headed	1 3	5 0
—densa	Many crowned	1 3	0 0
—multiplex	Starry do.	1 3	0 0
—stellaris	White spined do..	1 3	0 0
—S. albispinus	Splendid white do..	5 0	10 0
—eyriesii	White close spined	2 6	0 0
—scoba	Ottos splendid	2 6	0 0
—ettonis	Many headed do..	2 6	5 0
—multiplex			
Cactus Cerus	Creeping cercus,..	1 3	0 0
—flagelliformis	Great ng't blooming	5 0	0 0
—grandiflora	Six angled do.....	5 0	0 0
—hexagonis	Obtuse night bloom-		
—obtusus	ing	2 6	0 0
	Bluish	2 6	0 0
—offinus	Five angled.....	2 6	5 0
—pentagonis	Repend	2 6	0 0
—repandus	Leigans do.....	2 6	0 0
—lemanii	Black,	2 6	0 0
—nigricans	Great triangular...	1 3	10 0
—triangularis	Serpentine	5 0	0 0
C. C. Serpentinus	Splendid crimson..	2 6	20 0
—speciosissima	Monstrous.....	5 0	0 0
—Monstrosus			
Cactus Epiphyllum	Ackermans fine ...	5 0	10 0
—Ackermania	Large do.	5 0	10 0
—major	Truncated do.....	1 3	2 6
—truncata			

Price	Botanical Names.	Common Names.	Price.
6 a 12 6	Cactus Jenkinsonia	Fine crinson	2 6 a 10 0
0 10 0	—speciosa	Pinkish white	2 6 0 0
0 12 6	Cactus Opuntia	Depppi's	2 6 0 0
0 10 0	—deppii	Brazil	1 3 7 6
6 0 0	—brazilieniss	Fierce	1 3 0 0
6 0 0	—ferox	Long spined	2 6 7 6
6 0 0	—laucautha	Indian fig	1 3 0 0
6 0 0	—ficus Indica	Brittle	1 3 0 0
3 7 6	—fragilis	Brown spined	2 6 5 0
0 7 6	—microdasis	Cluster spine do.	1 3 0 0
3 0 0	—spinosissima	Prickly Pear	2 6 0 0
3 0 0	—vulgaris	Pendulous do	1 3 2 6
0 0 0	—Rhipsalis	Great flow'r'd do.	2 6 0 0
6 5 0	—pendula	Bell Flower.	
3 2 6	—grandiflora	Pyramidal blue	2 6 0 0
9 0 0	Campanula	White	5 0 0 0
6 5 0	—pyramdialis	Night Smelling	
	—alba	Cestrum	2 6 0 0
	Cestrum Nocturnum	Shrubby goldy locks	1 3 0 0
	Chryssicoma	Artemesia	
6 20 0	Coma aurea	Men yellow	1 3 0 0
3 0 0	Chrysanthemum	er white	1 3 0 0
	ge purple	1 3 0 0
0 2 6	iration	2 6 0 0
3 5 0	atum	1 3 0 0
3 0 0	Compact white	1 3 0 0
3 0 0	Cluster yellow	1 3 0 0
3 0 0	Large double white	1 3 0 0
0 10 0	Lisbon Lemon	5 0 12 6
6 0 0	China orange	7 6 20 0
6 0 0	Small fruited myrtle	
6 5 0	leaved	7 6 20 0
3 0 0	Citrus Vulgaris	Silver striped	10 0 25 0
0 0 0	—aurantia	Splendid crimson do.	2 0 7 6
0 0 0	—sinensis	Scarlet do.	2 6 0 0
3 0 0	—argentea striata	Cape Aster	
0 0 0	Crassula	Purple flowering	1 3 0 0
6 0 0	—larochea falcata	White and purple	1 6 0 0
6 0 0	—regens	Long leaved crinum	5 0 0 0
6 5 0	Cineria	Sweet scented do.	5 0 0 0
6 0 0	—cruenta	Indian daphne	5 0 10 0
6 0 0	—kingii	Silver stripe leaved	7 0 10 0
6 0 0	Crinum Longifolium	Three thorn apple	5 0 0 0
6 0 0	Daphne odora	Blue echium	2 6 0 0
3 10 0	—Indica	Air plant	1 3 0 0
0 0 0	—Striata	Coral tree	
6 20 0	Datura arborea	Cocks-comb flow'r'd	5 0 0 0
0 0 0	Echium Candicans	Herbaceous do.	3 9 0 0
0 0 0	Epidendron		
0 10 0	Erythrina		
0 10 0	—crista galli		
3 2 6	—herbacea		

Botanic Names.	Common Names.	Price.
Erica	Cape heath	
—aurea	Yellow flowering do.	5 0 a 12 6
—arbutiflora	Arbutus flowered, ..	5 0 12 6
—Transparentes	Transparentflowering	10 0 0 0
—versicolor	Various coloured, ..	10 0 0 0
—coccinea	Scarlet do.	2 6 7 6
—regerminans	Pretty whiteflowering	2 6 7 6
—mediterranea	Mediterranean	2 3 0 0
Eugenia Australis	Australian myrtle..	2 0 20 0
Eupatorium		
—elegans	Sweet smelling eu- patorium	1 3 0 0
Euonymus Japonica	Evergreen euony- mus	2 6 0 0
—variegata	Variiegated leaved..	3 9 0 0
Ferraria tigrida	Mexican tiger flower	1 3 0 0
Ficus Carica	Common Fig	2 6 0 0
—elastica	India-rubber tree..	7 6 10 0
Fuchsia	Ladies Ear Drop	
—Thompsonia	1 3 0 0
—globosa	Globular do.	2 6 0 0
—G. Major	Large Globe flower- ed do.	2 6 0 0
—gracillis	Slender do.	1 3 0 0
—fulgens	Splendid Scarlet...	5 0 0 0
—youellii	Youells superb,	2 6 0 0
—Standishii	Standish's fine ..	2 6 0 0
—venus victrix	White, with purple sepals	3 9 5 0
—Rosea alba	Rose and white fine	3 9 0 0
—magnificans	Very splendid, ...	3 9 0 0
—corymbiflora	Splendid cluster flowered, with im- mense racemes 4 inches long,	3 9 0 0

The following splendid varieties of new Fuchsias, are now under cultivation, and will be for sale in the autumn of the present year:—

- Antagonist.
- Caronet,
- Chauveri,
- Candidate
- Conductor,
- Chandlerii,
- Decora,
- Dalstonia,
- Exoniensis,
- Insignis,
- Lady Blantyre,
- Titus,
- Toddiana,

Price.	Names.	Description.	Price.
a 12 6	Fuchsias		
12 6	—Stanleyana,		
0 0	—Elegans superba,		
0 0	—Ivory Gem,		
0 0	—Modeste,		
7 6	—Oxonia,		
7 6	Glycine frutescens	Wisteria, a climber,	5 0 a 0 0
0 0	Gardenia florida	Cape Jasmine,....	5 0 10 0
20 0	Gladiolus	Sword Lilly	
	—floribundus	Flesh colored do. . .	2 6 0 0
	—psittacinea	Parrot like do.	2 6 0 0
	—cardinalis	Splendid scarlet do.	2 6 0 0
	—tristis	1 3 0 0
	Gnida simplex	Grace of Low'd do.	2 6 0 6
	Haemanthus alba	White Haemanthus,	3 9 0 0
	Heliotropium peruvianum	Peruvian turnsole, .	1 3 2 6
	—grandiflora	Large flowering do.	0 0 2 6
	Hemorocallis Japonica	White flowered fan, lilly,	2 6 5 0
	Hoya Carnosa	Chinese wax flower	2 6 0 0
	Hydrangea hortensis	Changeable flow'r'd	1 3 0 0
	Hyacinth, 50 varieties in Pots,	1 3 2 0
	Jasminum revolutum	Yellow Nepal Jas- mine.....	2 6 0 0
	Justicia nervosa	Nerve leaved Justi- cia,	2 6 0 0
	—speciosa	Splendid do.	1 3 5 0
	Magnolia fuscata	Olive col'd magnolia	10 0 0 0
	—conspicua	White flowered do.	10 0 0 0
	—grandiflora	Great Laurel leaved do.	10 6 0 0
	—soulangiana	Soulanges splendid,	15 0 0 0
	Maurandya Barclayina, a Climber	2 6 0 0
	Metrosideros Lophanta	Bottle brush plant, .	5 0 0 0
	Mesembryanthemum	Fig marigold.	1 3 0 0
	—cynbiforme	Boat shaped do.	1 3 0 0
	—pugioneforme	Dagger leaved do. .	1 3 0 0
	Myrtus Communis	Roman myrtle.	1 3 2 6
	—belgica	Bread leaved do. . .	1 3 2 6
	—fl. plena	Double flowering do.	1 3 2 6
	Mimosa Sensitiva	Sensitive plant.	2 6 0 0
	Mespilus Japonica	7 6 0 0
	Nerium Oleander	Common Rose bay. .	2 6 0 0
	—splendens	Double flowering do	2 6 7 6
	—rubra	Single Red do.	5 0 0 0
	—alba	Single white.	5 0 0 0
	Oxalis Boweii	Flesh cold oxalis. .	2 6 0 0
	—sulphurea	Yellow do.	1 3 0 0
	Passiflora Cerulea	Blue passion flower	2 0 0 0
	—palmata	Fruit bearing do. . .	2 6 0 0
	—alata	Wing stalk'd lo. . .	10 0 0 0
	Paeonia moutan, and several herbaceous var. do. . .		3 9 15 6

, are now
the present

Names.	Description.	Price.
Phlomis fruticosa	Jerusalem sage....	2 0 a 0 0
Pittosporum Tobira	Fragrant Pittosporum	7 6 0 0
—fol variegata	Silver striped do..	10 0 0 0
Plumbago Rosea	Rose colored lead- wort.....	2 6 0 0
Polyanthus Tuberosa	Double Tuberosa..	2 0 0 0
Primula Sinensis	Chinese primrose..	1 3 0 0
Punica rubra plena	Scarlet Pomegranate	2 6 0 0
Rhododendron		
—ponticum	Common do.....	5 0 0 0
—arborea	Tree	20 0 0 0
Rosemarinus		
—officialis	Rosemary	1 3 0 0
Salvia Splendens	Scarlet sage.....	2 6 0 0
—patens	Splendid purple...	3 9 0 0
Sempervivum		
—arborea	Treehouse leek....	2 0 0 0
Stapelia pulla	Dark flowered do..	1 3 0 0
—grandiflora	Large flowered do..	1 6 0 0
Tecoma Capensis	Cape trumpet flower	1 3 2 6
Verbena melindris	Scarlet verbena ...	1 3 0 0
—speciosa	Lilac do.....	1 3 0 0
—superba	Lilac	1 3 0 0
—pepperii	Maroon do.....	1 3 0 0
—fulgens	Scarlet do.	1 3 0 0
—eclipse	Scarlet do.....	1 3 0 0
—Bostonia	Blue do.	1 3 0 0
—clusterpink	1 3 0 0
—splendissima	Fine pink	2 0 0 0
—wilderii	Fine purple.....	2 0 0 0
—Boultonia	Pink (seedling)...	2 6 0 0
—Gray's purple	Splendid seedling..	2 6 0 0
—Bridesmaid	White	2 0 0 0

PELARGONIUM OR GERANIUMS,

All choice sorts (selected by the Subscriber) from the best collections in New York and Boston, and other sources.

☐ The prices vary from 1s. 0d. to 3s. 9d., according to the size and quality of the plant.

Names.	Description.
Æriel	Delicate pink, fine crimson spot,
*Alexandrina	Fine white with dark spot,
Alba multiflora	White, with purple spot,
*Alicia superba	White, with fine black spot
*Alarm	Very large dark red
Amelia	Fine bright lilac
*Arabella	Upper petals beautiful crimson, with very dark spot.

* Those were awarded the first prize (by the Toronto Horticultural Society,) at the May exhibition, 1845.

Price.	
0	0 0
6	0 0
0	0 0
6	0 0
0	0 0
3	0 0
6	0 0
0	0 0
0	0 0
3	0 0
6	0 0
9	0 0
0	0 0
3	0 0
6	0 0
3	2 0
3	0 0
3	0 0
3	0 0
3	0 0
3	0 0
3	0 0
0	0 0
0	0 0
6	0 0
6	0 0
0	0 0

Names.	Description.
*Beauty of ware	Large splendid flower dark red,
*Belladonna	Fine white, with black stripes on the upper petals,
Boultonianum	Dark rose, large showy flower (a seedling);
*Bridegroom	Upper petals dark crimson, lower do. pale rose,
*Britannia	Blush white with black spot on the upper petals,
*Conservative	Upper petals very dark, lower do. dark rose; extra fine and splendid flower;
Charles the 12th	Fine white;
Clouded perfection	Dark and white mottled,
Comptonianum	Delicate pink, very pretty and small clusters,
Climax	Rose, with dark spot,
Conqueror	Large dark Rose,
Champion of Devon	Dark mottled,
Diadematum	Pale Rose,
Discount	Fine dark showy flower,
Dauricanum	Bright crimson striped,
Daveyanum	Fine dark red;
Enchantress (Gray's)	Splendid rose with dark spot, seedling.
Erectum	Beautiful scarlet crimson, with black spot;
*Fanny Garth	Orange scarlet with black eye,
Gem	Deep Rose,
Grand Turk	Showy flower very dark;
Hills Hector	Bright rose splendid truss,
*Jewess	Orange scarlet with fine black spot,
Julia	Fine dark flower with very dark spot,
Joan of Arc	Upper petals dark crimson, lower do. bright pink,
*King of Hanover	Fine large dark flower,
King John	White, with purple spot,
King (Gaines')	Scarlet crimson fine,
Lady Douro	Beautiful rose with dark crimson spot,
Lifeguardsman	Lower petals rose, upper light pink, edged with crimson,
Lady Denbigh	Fine carmine,
Mary Queen of Scots	Dark rose,
*Matilda	Pale rose, with large dark crimson feather,
Miller's Nelson	Lilac striped large showy flower,
Maseppa	Lilac with fine dark spot,
Mrs. Sweet	Large dark rose,
Masterpiece (Gaines')	Fine bright rose strong growing plant,
*Nymph (Foster's)	Splendid rose pink, with fine dark spot,
Orange Boven	Salmon pink with fine spot,
Obscurum multiflorum	White, with dark spot,
Pink perfection	Delicate pink.
*Priory Queen	Very large pink fine spot and superb flower,
Premier	Dark rose, large showy flower, and fine spot,
*Perfection (Garth's)	Pale rose extra fine spot,
Portia	Very large rose, splendid flower,

UMS,

the best collec-

ording to the

ot,

on, with very

o Horticultural

Names.	Description.
Prima Donna	Salmon pink fine,
Prycum	Large rose, dark rosy stripe,
Queen of trumps	Fine white with dark spot, (seedling)
Regulator	Light purple,
*Roseum elegans	Upper petals rosy purple, with black spot and deeply lined, lower petals rose,
*Rosetto	Splendid rose,
Royena	Purple,
*Siddonia	Carmine finely pencilled beautiful,
Sappho	Superb white with crimson stripe,
*Speculum mundi	Very showy rose and dark lines,
*Susannah	Fine dark free bloomer,
Superior	Fine bright ruby,
Sylph	Splendid blush with dark velvet spot,
*Tam O'Shanter	Fine bright lilac with fine spot,
Wm. and Adelaide	Dark red with crimson stripe,
Una	White, with crimson scarlet feather,
*Victory (Garth's)	Upper petals rich dark crimson, lower petals blush white, superb and distinct flower,
Price per dozen, for the best sorts.....	s. d. 30 0
do. 2nd best	24 0
do. 3rd best	16 0

ROSES.

CHINESE MONTHLY, OR BENGAL ROSES, ROSA INDICA.

Name.	Form.	Colour and Character.	Price.
			s. d.
Agrippina	cupped	Brilliant crimson double ..	2 6
Beau carmine	cupped	Purple maroon shaded fine	2 6
Cramoisie superiure	cupped	Crimson fine.....	2 6
Camellia	globular	Pure white	2 6
Cels. multiflora	cupped	Large incarnate very fine.	5 0
Caroline de Berri	cupped	Blush shaded with fawn color fine,.....	3 0
Clara Sylvain	glob'r.	Pure white distinct and superb,.....	5 0
Duc d'Aumule	cupped	Large bright purple	5 0
Duchess of Kent	cupped	Incarnate rose colour	2 6
Eugene Beauharnois	cupped	Bright amaranth superb..	2 6
Fabvier	cupped	Reddish purple.....	2 6
Fanny Jarvis	cupped	White with pink tinge very double and splendid (seedling)	5 0
Grandval	compact	Fine purplish crimson....	2 6
Indica	cupped	Old blush vigorous and free blooming.....	1 3
—alba	expanded	White free blooming	1 3

Name.	Form	Colour and Character.	Price. s. d.
Madam Desprez	cupped	Pure white beautiful.....	2 6
—Fresmorel	compact	Creamy white very fine...	2 6
Marjoline	globular	Very deep crimson.....	3 9
Mrs. Bosanquet	cupped	Large blush very fine.....	3 9
Napoleon	cupped	Large blush very fine.....	3 9
Princess Marie	cupped	Shaded blush very large and fine	5 0
Prince Charles of Luxemburg	cupped	Brilliant carmine superb..	2 6
Reine Blanche	expanded	Pure white fine.....	2 6
Roi des Cramoises	cupped	Brilliant red distinct.....	2 6
Romeo	cupped	Deep red very double....	2 6
Sanguinea	cupped	Bright crimson anemone flowered	1 3
—striata	cupped	Striped crimson.....	1 3
Stevens' new china	cupped	Purplish crimson very fine	2 6
Taglioni	cupped	Large white yellowish centre.....	5 0
Theresa Stravius	cupped	Purplish crimson	2 6
Triumphant	cupped	Very large deep purplish crimson	5 0

TEA-SCENTED CHINA ROSES, ROSA INDICA VAR ODORATA.

Aurora	cupped	Straw and white changing to rose	5 0
Bougere	cupped	Large glossy bronze superb	5 0
Bourbon	cupped	Fine white.....	5 0
Caroline	cupped	Fine rosy blush	2 6
Devoniensis	cupped	Straw, buff centre superb.	2 6
Duchess of Mecklen- burg	cupped	Large pale yellow.....	3 9
Golconda	cupped	Creamy blush.....	5 6
Hortensia	cupped	Flesh colored	2 0
Odoratissima	expanded	Blush with deeper centre	2 6
Triumph de Luxemburg	globular	Large salmon pink	5 0
Philadelphia	globular	Large salmon pink	2 6
White or odorata alba	expanded	Pure white.....	2 6
Yellow or Lutescens	expanded	Fine large sulphur yellow	3 9
Zebrina	cupped	White, shaded with yellow	2 6

BOURBON ROSES, ROSA BOURBONIANUM.

Abbe Plantier	cupped	Deep rose colour.....	2 6
Bosanquet	cupped	White tinged incarnate...	2 6
Crimson globe	globular	Vermillion shaded.....	2 6
Hermosa	cupped	Pale rosy beautiful.....	2 6
Ninon de l'Enclos	cupped	Violet purple.....	5 0

NOISETTE ROSES, ROSA CHAMPNEYANA.

Aimee vibert	cluster	Pure white, very fine.....	3 9
Blush cluster	compact	Blush in immense clusters	2 6

Name.	Form.	Colour and Character.	Price. s. d.
Eugene Pirole	cupped	Carmine rose	2 6
Felleberg	cupped	Bright crimson	2 6
Jaune Desprez	expanded	Large bright rosy fawn colour.....	2 6 to 10 0
Lamarque	expanded	Lemon colour, large and superb	5 0
Lutea	globular	Large splendid yellow....	3 0
Triumph de Arcole	expanded	Splendid incarnate tinged	10 0

RUBIFOLA, OR PRAIRIE ROSES.

Queen of the Prairies	d'ble cluster	Large beautiful deep pink, grows 30 feet high...	5 0
Baltimore Belle	d'le cluster	Pale rose, blush centre and climber	2 6

These varieties are perfectly hardy, and are well adapted for planting in fronts of houses, or to train up a verandah.

HARDY ROSES.

Perpetual white moss	cluster	White, often striped with crimson.....	5 0
Common red moss	globular	Rosy red.....	3 0
Princess of Nassau	cluster	Yellowish white, profuse flowering	2 6
Harrisonia	expanded	Pure yellow.....	5 0
Several other good varieties at			2 6

CARNATIONS, DIANTHUS CARYOPHYLLIS.

This interesting class of flowers, which command universal admiration, has received our particular attention; the collection comprises some of the very best varieties. We have 300 plants in pots now ready for delivery, and can, with confidence, recommend them to Amateurs and the Public.

Name.	Description.	Price. s. d.
*Bijou	Very dark pink striped with crimson	3 9
*Lady Jersey	Pale blush striped with crimson....	2 6
*Lady Baird's favourite	White, with dark stripe.....	3 0
*Lady Flora Hastings	Blush, crimson stripe.....	2 6
*Lady Peel	Magnificent purple flake on a white ground	5 0
*Lord Douglas	Very fine rose, with dark stripe....	3 3
*—Eglinton	Fine large purple self col'd.....	2 6
*Marquis of Bute	Very splendid scarlet flake.....	2 6
*Pale yellow	Straw colour expanded.....	2 6
*Princess	Flame colour with crimson stripes .	2 6
*Beauty of Renfrew	Large purple.....	2 6

* The 1st Carnations were awarded the 1st and 2nd prize at the July exhibition of the Toronto Horticultural Society, 1845.

Name.	Description.	Price. s. d.
*Red Rover	Red, black and cream stripes.....	2 0
Rosalinda	Fine rose colour.....	2 6
Sparkler	Large rose colour.....	2 6
Penelope	Brown, with crimson stripes.....	2 6
	Several other fine varieties not named.....	2 6

PICOTEES.

These are beautifully margined with some colour distinct from the body of the flower, such as pink, scarlet, cherry, crimson, purple, &c., according to the variety.

Conqueror	Large white, margined with purple,	3 9
Climax	White, edged with cherry.....	2 6
Garland	White, with crimson margin.....	2 6
Hovey's crimson	Crimson, lined with deep red.....	2 0
Eclipse	White, with crimson margin.....	2 0
Sultana	Primrose, edged with crimson.....	5 0
	Twenty other varieties without name.....	2 0

The six varieties of Picotees, also obtained the first prize.

DOUBLE DAHLIAS.

These are all splendid double flowers, and are decidedly the best in the Province. The Subscriber was awarded the first and second prizes for the last two years, at the Dahlia shows in Toronto, and several fine varieties have since been added to his collection.

Name.	Colour of the Flower.	Price. s. d.
Andrew Hofer	Maroon large splendid flower....	2 6
Ansell's Unique	Yellow, tipped with crimson.....	2 6
Alba purpurea	White, striped lilac.....	3 9
Bianca	Pure white, very large and splendid	5 0
Berkshire champion	Dark globe maroon.....	2 6
Beauty of the West	Very dark rose, tree bloomer....	1 3
Beauty of the plain	White, shaded with lavender....	2 6
Charles XII.	Plum colour.....	2 6
Conservative	Light purple free flowering.....	1 3
Danecroft rival	Bright Scarlet showy flower.....	1 3
Fireball	Vivid scarlet.....	1 3
Gem or Royal Adelaide	White, shaded with lavender....	1 3
Grandis	Plum colour, very large.....	1 3
Grand Tournament	Blush superb flower.....	2 5
Le Grand Baudain	Rosy lilac, large showy flower...	2 6
Marshal Soult	Lilac and red.....	2 6
Miss Scroope	Fine rose cupped.....	1 6
Premier	Canary yellow.....	2 6
Lord Lyndhurst	Very large shaded scarlet.....	1 3
Striata formosissima	Blush white distinctly striped, and spotted with crimson.....	5 0
Miss Penfold	Splendid white, shaded lilac.....	5 0
Tournament (Catleugh's)	Ruby scarlet very fine.....	2 6

Name.	Colour of the Flower.	Price. <i>s. d.</i>
Yellow victory	Splendid yellow.....	2 6
A great many other varieties without name.....		1 0
Price by the dozen, for the very best one of each left to the Proprietor.....		20 0
do.	do. do. do.	18 0
do.	do. third do.....	12 6

Dry roots can be had at any time before the 1st of June, and will be packed, and sent according to directions to any part of the Province.

A Discount of 25 per cent. on the catalogue prices, will be allowed to all purchasers of plants, &c. &c., for all sums above 50 dollars, and all orders from a distance containing cash, or reference in Toronto, will be punctually attended to.

The Subscriber would also intimate, that he has a choice collection of Fruit Trees on hand, consisting of Apple, Plum, Pear, Peach and Cherry, selected by himself from some of the best nurseries in Rochester last fall, and which he will sell cheap for cash; and having made arrangements for a supply of Fruit Trees, Flowering Shrubs, Herbaceous Plants, &c., &c., orders entrusted to him will be faithfully executed.

Toronto, Feb. 2nd, 1846.

JOHN GRAY,

BRIEF DIRECTIONS FOR THE

MANAGEMENT OF PLANTS IN ROOMS.

THE management of Plants in dark or close rooms is a very difficult matter, as they lose their vegetation for want of light and air; and also suffer frequently for want of being watered when dry, but more frequently, by getting too much water, which soddens the mould and rots the roots.

If in a light airy room, the plants will thrive nearly as well as in a Green House, with proper management to keep them near the light as possible, and only to give them water, when the mould in which they are grown is dry; they must then have a good soaking; and if the leaves get covered with dust, it must be washed off, as it stops the pores and makes them turn yellow and sickly.

The oftener the plants are changed the better; and it is a good plan to admit air whenever the state of the weather will permit it, and the best time is between ten and two o'clock in the day.

More plants suffer from too much moisture, than from too little: the persons who generally have the care of such plants, from want of experience, thinking the more water they give the better, and suppose they want water every day, and pretend they cannot tell whether the plant wants water or not, when it is the easiest thing in the world to see whether the mould in the pots is moist or dry; if there is the least degree of moisture, of course the plants require no water, but as soon as it is dry they require a good soaking; if the plants are kept in small pots and full of roots, they will require much more water, and more frequently than those that have more room and fewer roots; in winter, and in a light room, and where the plants can be set near the window, they will frequently succeed as well, or even better, with good care, than in a Green-house, as being not so many in number, they frequently are attended with more care, and we have frequently seen healthier plants of Geraniums, Myrtles, Camellias, and different sorts of China roses grown in rooms than in the Green-house, the reason for which may be attributed to the greater care in attending a few plants, by turning the different sides occasionally to the light, in gathering off decayed leaves as they appear, and only supplying them with water when needed. To have them surfaced with leaf mould and sand, or sandy loam at least once every two months, taking care not to press the earth too hard, as this prevents the free circulation of air so necessary to the growth of plants in rooms, and leaving at least half an inch between the surface and the rim of the pot. Placing moss on the surface of the earth in pots is a bad practice, as a dampness arises from it, which frequently damps off the stem of the plant, and it also prevents the circulation of air to the roots.

The splendid new varieties of Geraniums, China and Tea Roses, Fuchsias, Verbenas and Camellias, &c., may all be grown to the greatest perfection, and by attending to the above observations, the difficulties attending the growing of plants in rooms, may be entirely overcome.

Toronto, Feb. 2nd 1846.

JOHN GRAY.

Price.

s. d.

2 6

1 0

left to

20 0

18 0

12 6

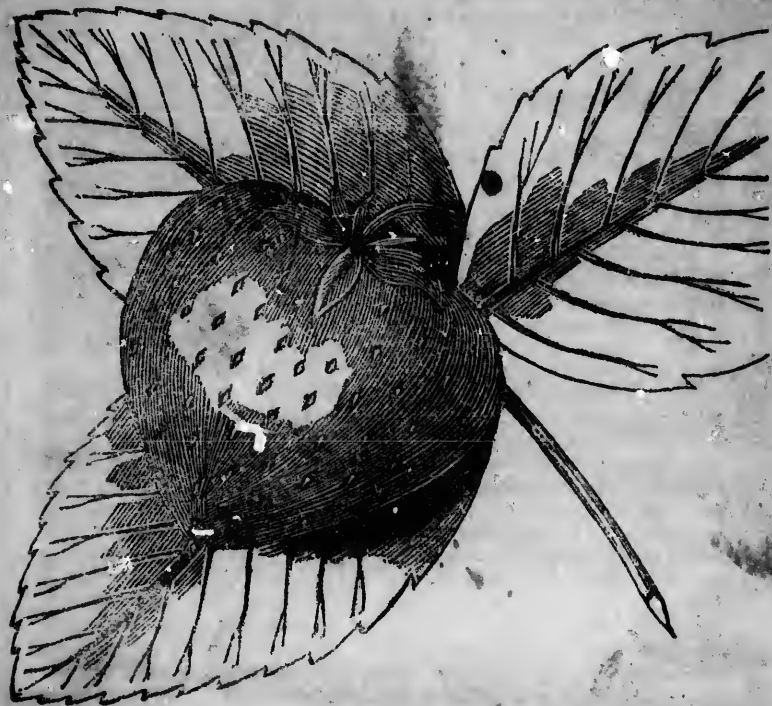
June, and will
part of the

will be allowed
over 50 dollars,
reference in

choice collec-
Plum, Pear,
the best nur-
cheap for cash;
Trees, Flow-
entrusted to

GRAY,

NEW STRAWBERRY.



HOVEY'S SEEDLING.

THIS STRAWBERRY was raised by Messrs. Hovey, of Boston, and has been exhibited for the last eight years, at the Rooms of the Massachusetts Horticultural Society, and each season obtained the Society's Premium, although in competition with the Hovey's Seedling, Downton, &c. Gentlemen, well acquainted with the above varieties, have seen the Bed in full bearing, and they unhesitatingly pronounced it to be the largest, most handsome, best flavoured, most productive, and hardy variety they have ever seen.—*Boston Horticultural Magazine.*

The Subscriber received Plants of the above Strawberry from Messrs. Hovey three years ago, and they have stood the last three winters without the loss of a single Plant. The Price then was 12s. 6d. per dozen. They are now offered at the reduced Price of 5s. per dozen, or, by the hundred, 25s.

Toronto, 1846.

JOHN GRAY.

European Grape Vines, for Vinerles, &c.

THE Subscriber can furnish the following superior kinds of Grape Vines, raised from the eye, at 2s. 6d. per Plant:—Black Hamburg, Black Zinfindal, Black Sylvana, Black Prince, White Sweet Water, White Frontenac, White Muscat of Alexandria, White Assyrian, Golden Chasselas, and Red Frontenac.

The Subscriber has had the opportunity of testing most of these varieties, in the Vinerles at Rosedale (the seat of W. B. Jarvis, Esq.), and he can warrant them true to their name.

Toronto, 1846.

JOHN GRAY.

R R Y.



N G.

vey, of Boston,
he Rooms of the
ned the Society's
Keen's Seedling,
varieties, have
nounced it to be
ctive, and hardy
azine.

rry from Messrs.
winters without
er dozen. They
by the hundred,

JOHN GRAY.

s, &c.

kinds of Grape
Black Hamburg,
e Sweet Water,
Assyrian, Golden

of these varieties,
sq.), and he can

JOHN GRAY.

ONTO.



