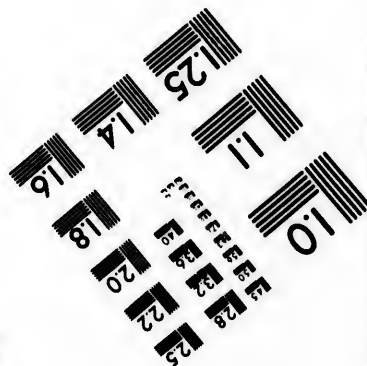
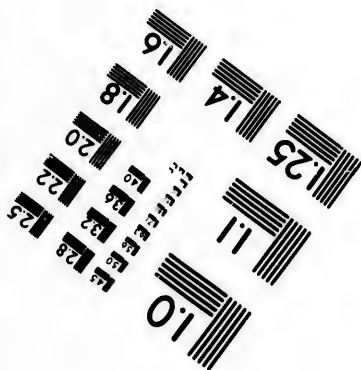
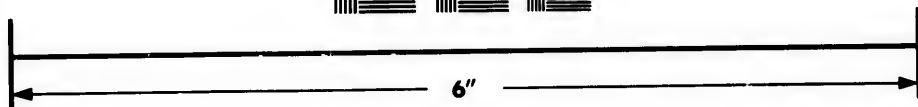
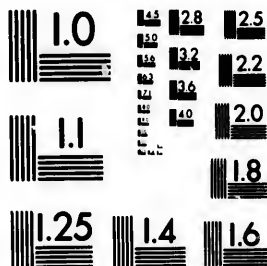


**IMAGE EVALUATION
TEST TARGET (MT-3)**



**Photographic
Sciences
Corporation**

23 WEST MAIN STREET
WEBSTER, N.Y. 14580
(716) 872-4503

**CIHM/ICMH
Microfiche
Series.**

**CIHM/ICMH
Collection de
microfiches.**



Canadian Institute for Historical Microreproductions / Institut canadien de microreproductions historiques

© 1981

Technical and Bibliographic Notes/Notes techniques et bibliographiques

The Institute has attempted to obtain the best original copy available for filming. Features of this copy which may be bibliographically unique, which may alter any of the images in the reproduction, or which may significantly change the usual method of filming, are checked below.

L'Institut a microfilmé le meilleur exemplaire qu'il lui a été possible de se procurer. Les détails de cet exemplaire qui sont peut-être uniques du point de vue bibliographique, qui peuvent modifier une image reproduite, ou qui peuvent exiger une modification dans la méthode normale de filmage sont indiqués ci-dessous.

- | | |
|--|--|
| <input type="checkbox"/> Coloured covers/
Couverture de couleur | <input type="checkbox"/> Coloured pages/
Pages de couleur |
| <input type="checkbox"/> Covers damaged/
Couverture endommagée | <input type="checkbox"/> Pages damaged/
Pages endommagées |
| <input type="checkbox"/> Covers restored and/or laminated/
Couverture restaurée et/ou pelliculée | <input type="checkbox"/> Pages restored and/or laminated/
Pages restaurées et/ou pelliculées |
| <input type="checkbox"/> Cover title missing/
Le titre de couverture manque | <input type="checkbox"/> Pages discoloured, stained or foxed/
Pages décolorées, tachetées ou piquées |
| <input checked="" type="checkbox"/> Coloured maps/
Cartes géographiques en couleur | <input type="checkbox"/> Pages detached/
Pages détachées |
| <input type="checkbox"/> Coloured ink (i.e. other than blue or black)/
Encre de couleur (i.e. autre que bleue ou noire) | <input type="checkbox"/> Showthrough/
Transparence |
| <input type="checkbox"/> Coloured plates and/or illustrations/
Planches et/ou illustrations en couleur | <input type="checkbox"/> Quality of print varies/
Qualité inégale de l'impression |
| <input type="checkbox"/> Bound with other material/
Relié avec d'autres documents | <input type="checkbox"/> Includes supplementary material/
Comprend du matériel supplémentaire |
| <input type="checkbox"/> Tight binding may cause shadows or distortion
along interior margin/
La reliure serrée peut causer de l'ombre ou de la
distortion le long de la marge intérieure | <input type="checkbox"/> Only edition available/
Seule édition disponible |
| <input type="checkbox"/> Blank leaves added during restoration may
appear within the text. Whenever possible, these
have been omitted from filming/
Il se peut que certaines pages blanches ajoutées
lors d'une restauration apparaissent dans le texte,
mais, lorsque cela était possible, ces pages n'ont
pas été filmées. | <input type="checkbox"/> Pages wholly or partially obscured by errata
slips, tissues, etc., have been refilmed to
ensure the best possible image/
Les pages totalement ou partiellement
obscurcies par un feuillet d'errata, une pelure,
etc., ont été filmées à nouveau de façon à
obtenir la meilleure image possible. |
| <input type="checkbox"/> Additional comments:/
Commentaires supplémentaires: | |

This item is filmed at the reduction ratio checked below/
Ce document est filmé au taux de réduction indiqué ci-dessous.

10X	14X	18X	22X	26X	30X
<input type="checkbox"/>	<input type="checkbox"/>	<input type="checkbox"/>	<input type="checkbox"/>	<input checked="" type="checkbox"/>	<input type="checkbox"/>
12X	16X	20X	24X	28X	32X

The copy filmed here has been reproduced thanks to the generosity of:

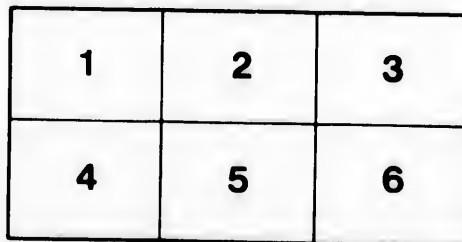
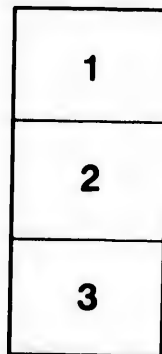
Library Division
Provincial Archives of British Columbia

The images appearing here are the best quality possible considering the condition and legibility of the original copy and in keeping with the filming contract specifications.

Original copies in printed paper covers are filmed beginning with the front cover and ending on the last page with a printed or illustrated impression, or the back cover when appropriate. All other original copies are filmed beginning on the first page with a printed or illustrated impression, and ending on the last page with a printed or illustrated impression.

The last recorded frame on each microfiche shall contain the symbol \rightarrow (meaning "CONTINUED"), or the symbol ∇ (meaning "END"), whichever applies.

Maps, plates, charts, etc., may be filmed at different reduction ratios. Those too large to be entirely included in one exposure are filmed beginning in the upper left hand corner, left to right and top to bottom, as many frames as required. The following diagrams illustrate the method:



L'exemplaire filmé fut reproduit grâce à la générosité de:

Library Division
Provincial Archives of British Columbia

Les images suivantes ont été reproduites avec le plus grand soin, compte tenu de la condition et de la netteté de l'exemplaire filmé, et en conformité avec les conditions du contrat de filmage.

Les exemplaires originaux dont la couverture en papier est imprimée sont filmés en commençant par le premier plat et en terminant soit par la dernière page qui comporte une empreinte d'impression ou d'illustration, soit par le second plat, selon le cas. Tous les autres exemplaires originaux sont filmés en commençant par la première page qui comporte une empreinte d'impression ou d'illustration et en terminant par la dernière page qui comporte une telle empreinte.

Un des symboles suivants apparaîtra sur la dernière image de chaque microfiche, selon le cas: le symbole \rightarrow signifie "A SUIVRE", le symbole ∇ signifie "FIN".

Les cartes, planches, tableaux, etc., peuvent être filmés à des taux de réduction différents. Lorsque le document est trop grand pour être reproduit en un seul cliché, il est filmé à partir de l'angle supérieur gauche, de gauche à droite, et de haut en bas, en prenant le nombre d'images nécessaire. Les diagrammes suivants illustrent la méthode.

A CHART of NORTH and

197° 35'

187° 35'

177° 35'

167° 35'

80

N O R T H

Thadæus Cape or
Elbow of Suetoy
Most Eastern Po
Elbow of Treob

Most East Coast

Most West Coast

75

The N. E. end of Asia being part of
Siberia is Drawn from Cape Behring (or
Beering) own Map of his Discoveries, improved
from the Map of the New Northern Archipelago.
Published at Petersburg in 1774 by M. V. Nov. St. Petersburg

one of the islands of the
Szalaginski Nos
or Holy Cape
Tchuktzkotskoi Nos

NORTH and SOUTH AMERICA, including the

167° 35'

157° 35' Longitude W. from London 147° 35'

137° 35'

127° 35'

N O R T H A M E R I C A

Latitudes observed by Capt^d BEHRING on the Coast of SIBERIA.

Thaddeus Cape and River.....	64 . 20 .	East Point of Sukhotki or Chickotakago.....	64 . 25 .
Elbow of Swetoy Krest, or Holy Cross Bay.....	65 . 40 .	Ile S ^t Laurence.....	64 . 00 .
Most Eastern Point or Cape Chukchense.....	66 . 35 .	Ile S ^t Demetrius.....	66 . 00 .
Elbow of Treobruzenski Bay.....	65 . 1 .	The place from whence he return'd.....	67 . 18 .

Comparative Table.

	W. of London	Long.	this Chart	Difference	Lat.	this Chart	Difference
Most East Coast of Siberia	by Moll.....	130 . 00 .	190 . 00 .	60 . 00 .	72 . 00 .	72 . 00 .	00 . 00 .
	by Senex.....	67 . 00 .	120 . 00 .	53 . 00 .	72 . 00 .	72 . 00 .	00 . 00 .
Most West Coast of America	by Moll.....	140 . 00 .	180 . 00 .	40 . 00 .	50 . 00 .	70 . 00 .	20 . 00 .
	by Senex.....	140 . 00 .	180 . 00 .	40 . 00 .	50 . 00 .	70 . 00 .	20 . 00 .

From the above Table it appears, that the Coast of Asia extends 60 Degrees more East than the Maps & Charts of Moll and 53 more than those of Senex place it, so that they omit a vast extent of Country: in like manner they curtail the North West Coast of America 20 Degrees in Long. and so in Lat. In making the distance between the two Continents in 1700 Leagues when it is less than 100.

S^t Hans Sluice

Charting the ATLANTIC and PACIFIC OCEANS

127° 35' 117° 35' 107° 35' 97° 35' 87° 35'

A N

		H U D S O N S T R		C O		
		This Chart	Balfour's Chart	Difference	D. Anvils Map	Differ
Cape Warwick or Resolution	Observers <i>Baffin</i> 1615	Lat* 61.26	Chart 1751			
	<i>Southpoint</i>					
Cape Chidley or Buttons Isles	} <i>Davis</i> 1585	Lat* 61.10	62.45	1.35	61.45	0.
		Long 46.25	43.15	3.10	45.25	1.
Mill Isle	} <i>Baffin</i> 1615	Lat* 61.10	63.0	1.50	60.20	0.
		Long 46.0	44.30	1.30	45.25	0.
C. Comfort	} <i>Baffin</i> 1615	Lat* 64.0				
		Long 61.10				
K. Charles	} <i>Baffin</i> 1615	Lat* 65.0	63.45	0.45	65.0	0.
		Long 63.20	63.10	1.50	64.20	1.
Cape	} <i>For</i> 1631	Lat* 64.46				
		Long 61.10				
E. Weston	} <i>For</i> 1631	Lat* 66.47				
		Long 58.5				
Port Nelson River	} <i>Ellis</i> } <i>Smith</i> } 1747	Lat* 57.30	58.45	1.15		
		Long 75.40	60.10	6.30		

A R C T I C

Alderman Jones's Sound

They land here plenty of Moroses but no signs of Inhabitants.

This Shore bends much to the South.

B

S. James Lancasters Sound 74° 20'

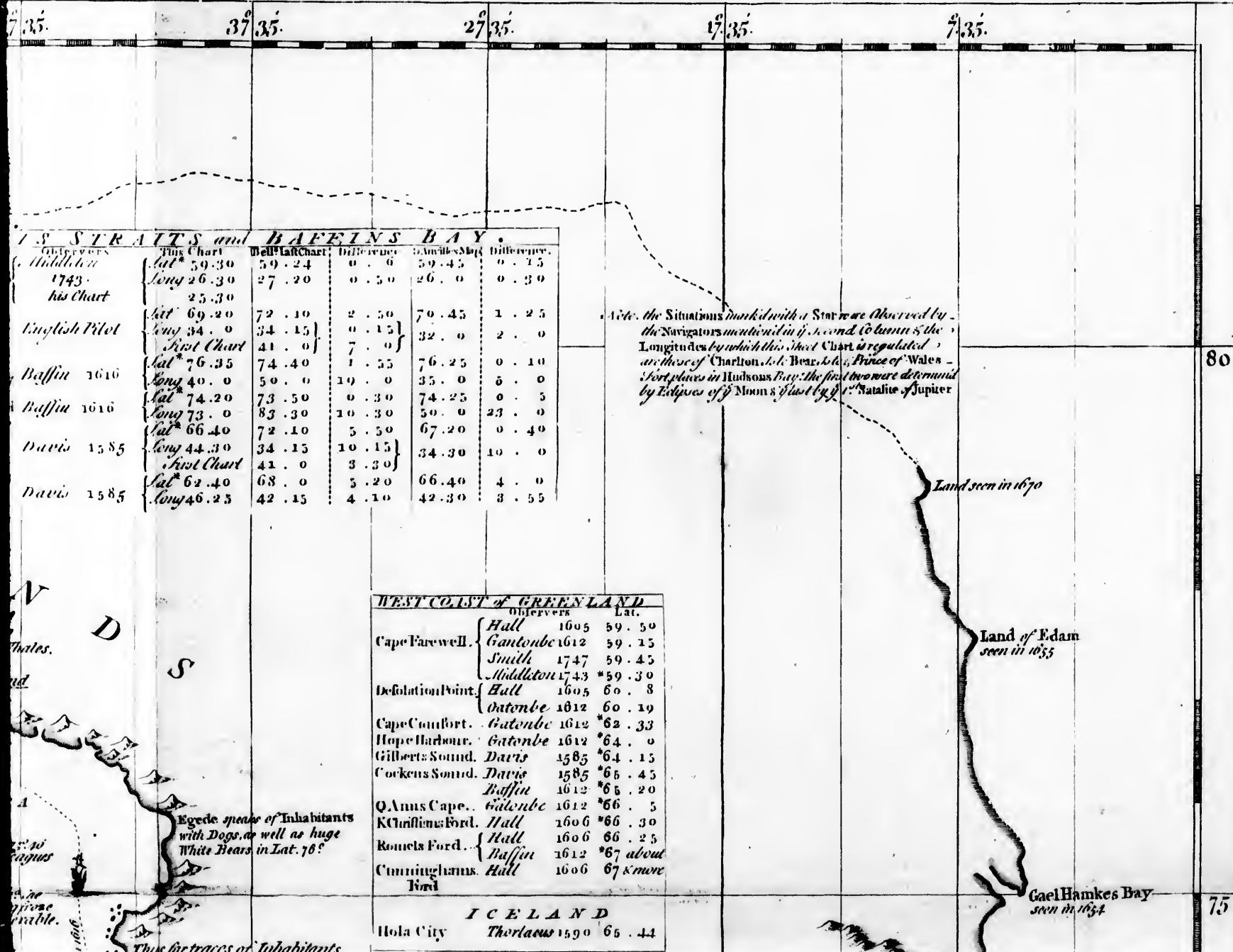
S. Hays Sound

OCEANS, with the nearest COASTS of EUROPE

77° 35'		77° 35'		67° 35' Longitude W. from London.		57° 35'		47° 35'	
C O M P A R I T I V E T A B L E									
N O R T H S T R A I T S and B A Y					D A V I S S T R A I T S				
Latitude	D. Anvilles Map	Difference	Observers	This Chart	Bellins	Difference	D. Anvilles Map	Difference	Observers
61.45		0.35	Cape Dobbs... Smith 1747	lat* 65.29 long 66.59	66.00	0.31	65.00	0.29	Cape Brewel } Huddleton 1743 his Chart
45.25		1.00	Marble Island... Smith 1747	lat* 62.50 long 74.48	70.20	3.21	68.00	1.11	C. Bedford... English Pilot
60.20		0.50	Pr. Wales Fort... Huddleton 1743	lat* 58.56 long 77.15	60.15	1.19	58.50	0.60	C. Dudley Diggs... Baffin 1616
45.25		0.35	Churchill River } Ellis 1747 Smith }	lat* 57.30 long 75.40	72.30	4.45	72.10	0.20	Launceston Sound... Baffin 1616
65.00		0.00	Port Nelson River } James 1632	lat* 55.5 long 63.30	69.10	6.30	77.00	3.40	Mount Ruel... Davis 1585
64.20		1.00	C. Henrietta... Maria	lat* 54.34 long 62.16	56.00	0.55	54.58	0.70	Lumleys Inlet... Davis 1585
			G. Bear Island... Huddleton 1737	lat* 52.3 long 62.30	53.00	0.57	51.40	0.23	
			Charlton Island... James 1632		60.00	62.30	60.50	1.40	



EUROPE, AFRICA, and ASIA.



		This Chart		Well's Last Chart		Difference		Difference	
Middleton	lat ^s 59.30	59.24	0.6	59.45	0.15				
	1743 his Chart	26.30	27.20	0.50	26.0	0.30			
English Pilot	lat ^s 69.20	72.10	2.50	70.45	1.25				
	long 34.0	34.15	0.15	32.0	2.0				
	First Chart	41.0	7.0						
Baffin 1616	lat ^s 76.35	74.40	1.55	76.25	0.10				
	long 40.0	50.0	10.0	35.0	5.0				
Baffin 1616	lat ^s 74.20	73.50	0.30	74.25	0.5				
	long 73.0	83.30	10.30	50.0	23.0				
Davis 1585	lat ^s 66.40	72.10	5.50	67.20	0.40				
	long 44.30	34.15	10.15	34.30	10.0				
	First Chart	41.0	3.30						
Davis 1585	lat ^s 62.40	68.0	5.20	66.40	4.0				
	long 46.25	42.15	4.10	42.30	3.55				

Note: the Situations marked with a Star were Observed by the Navigators mentioned in the second Column & the Longitudes by which this Chart is regulated are those of Charlton, J. de Bear, & the Prince of Wales - Fort places in Hudsons Bay: the first two were determined by Eclipses of the Moon & last by the Star of Jupiter

WEST COAST OF GREENLAND		
Observer	Lat.	Long.
Cape Farewell	Hall 1605	59.50
	Gatonbe 1612	59.15
	Smith 1747	59.45
Defolation Point	Middleton 1743	*59.30
	Hall 1605	60.8
Cape Comfort	Gatonbe 1612	60.19
	Gatonbe 1612	*62.33
Hope Harbour	Gatonbe 1612	*64.0
Gilberts Sound	Davis 1585	*64.15
Cockens Sound	Davis 1585	*65.45
	Baffin 1612	*65.20
Q. Anns Cape	Gatonbe 1612	*66.5
K. Christians Ford	Hall 1606	*66.30
Kornels Ford	Hall 1606	66.25
	Baffin 1612	*67 about
Cunninghams Ford	Hall 1606	67 & more

ICELAND	
Hola City	Thorlacus 1590 65.44

Esgede speaks of Inhabitants with Dogs, as well as huge White Bears in Lat. 78?

Thus far traces of Inhabitants

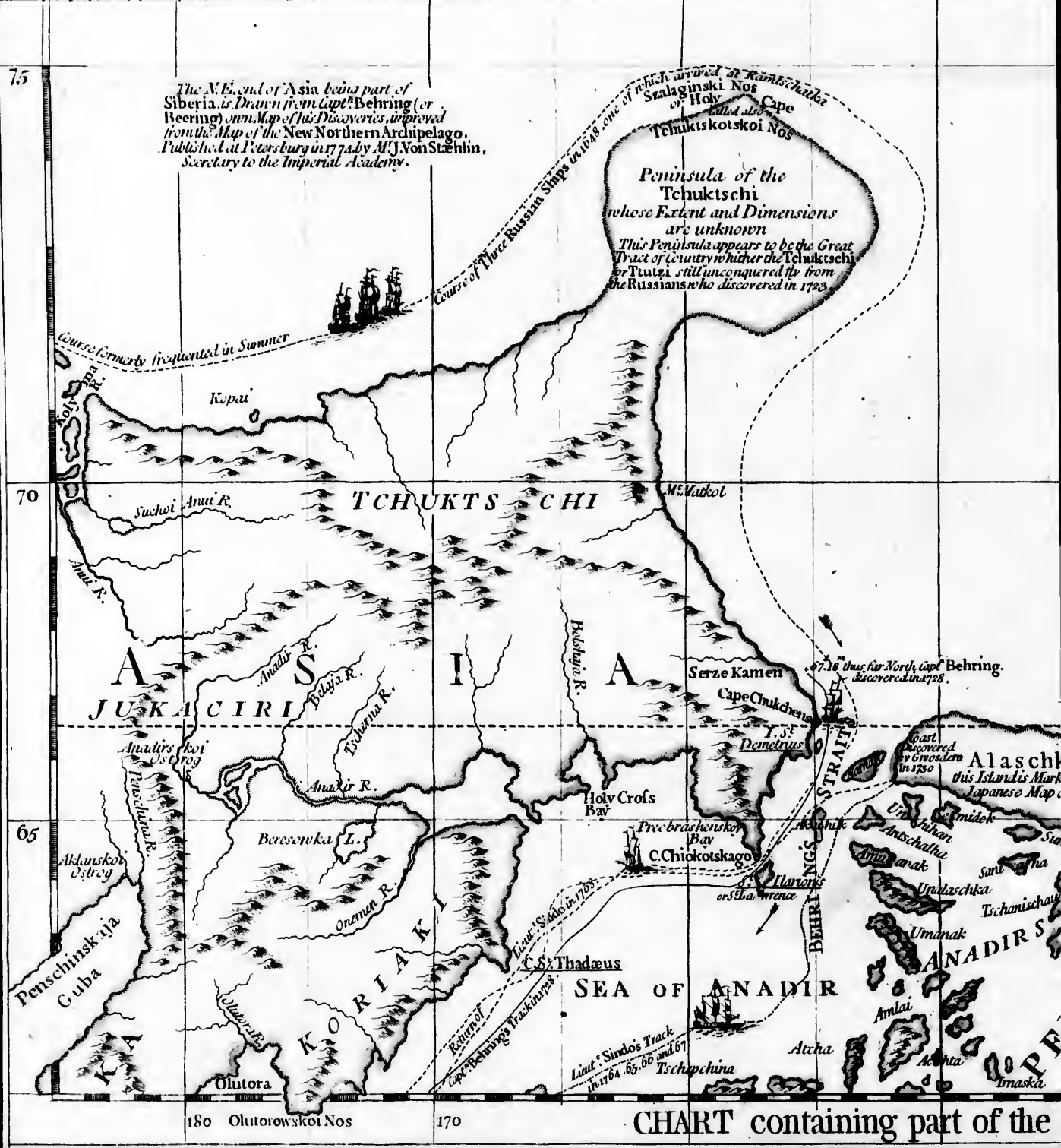
Land seen in 1670

Land of Edam seen in 1655

Gael Hamkes Bay seen in 1654

75

The N. E. end of Asia being part of Siberia is Drawn from Capt. Behring's (or Bering) own Map of his Discoveries, improved from the Map of the New Northern Archipelago. Published at Petersburg in 1774. by M. J. Von Stæhlin, Secretary to the Imperial Academy.



Course of Three Russian Ships in 1741, one of which arrived at Koniokotskoi Nos
 Szlaginski Nos
 or Holy Cross Cape
 Tschuktskotskoi Nos

Peninsula of the Tschuktschi
 whose Extent and Dimensions are unknown
 This Peninsula appears to be the Great Tract of Country whither the Tschuktschi or Tuzzi still unconquered fly from the Russians who discovered in 1723

Course formerly frequented in Summer

70

65

180 Olutorowskoi Nos

170

CHART containing part of the

160

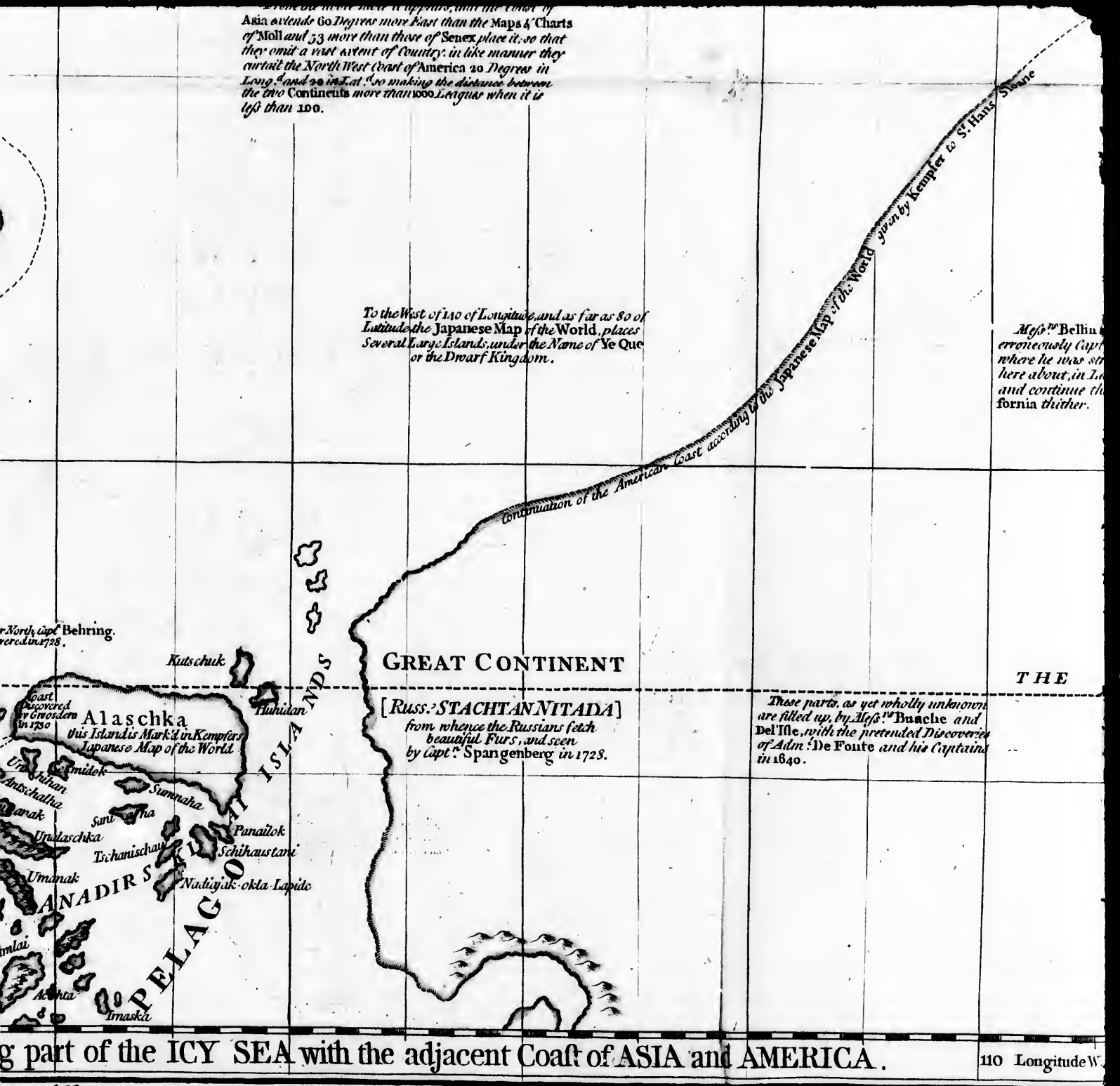
150

Published according to Act of Parliament, in June

Some say in the year 1771, that the Coast of Asia extends 60 Degrees more East than the Maps & Charts of Moll and 53 more than those of Senex, place it, so that they omit a vast extent of Country: in like manner they curtail the North West Coast of America 20 Degrees in Longitude and 20 in Latitude, so making the distance between the two Continents more than 1000 Leagues when it is less than 100.

To the West of 140 of Longitude, and as far as 80 of Latitude the Japanese Map of the World, places Several Large Islands, under the Name of Ye Que or the Dwarf Kingdom.

Majr^r Bellin erroneously Capt where he was str here about, in Lo and continue th fornia thither.



g part of the ICY SEA with the adjacent Coast of ASIA and AMERICA.

110 Longitude W

150 140 130 120
 Act of Parliament, 16 June 1775, by Robt Sayer & J. Bennett, No. 53 in Fleet Street.

B

This Shore bends much to the South.

St. James Lancasters Sound 74° 20'

Hitherto they had an open Sea and sailed close by the Shore. But hence South they had a ledge of Ice between them & the Shore.

British Return 2496

Here they saw Land.

Maj^r Belin and Bruchner place erroneously Capt^r Behrings Isle, where he was stranded and died, here about, in Lat. 72° Long. 125° and continue the Coast from California thither.

PRINCE WILLIAM

ESKIMAU

LAND

Parts discovered by Capt MIDDLETON
Repulse Bay
C. Hope
Duglas Harbor
Peer Sound
Wager Water
The Hill
C. Smith
C. Dobbs
White Point Bay
C. Tulerton
C. Pennington
C. Southwell
C. Southampton
C. Necker
C. Drake
C. Steep

THE POLAR CIRCLE

NEW NORTH WALES
Providence Inlet called also Chesterfield
Bowdens Inlet not quite discovered
ESKIMAU
Rankin Inlet or Pistol Bay
THE WELCOME of St. Thomas Roe
Marble Hill or Breck Cobham
Southwell I.
Knights I.
C. Eskimaux
Capt. SMITH 1747

Note
The North and South Tides meet below Marble Island, & are always equal on the same days, so that neither of them can come from the Pacific Ocean whose Distance likewise of above 430 leagues hath long cryed aloud that there is no Passage of Water for Ships from the Pacific Bay.

This Coast drawn by Capt. SMITH 1747

HUDSON'S

110 Longitude W. from Ferro

100

90 Longitude W. from Ferro. 17.35 W. of London.

80

CHART comprizing G

B A F F I N S

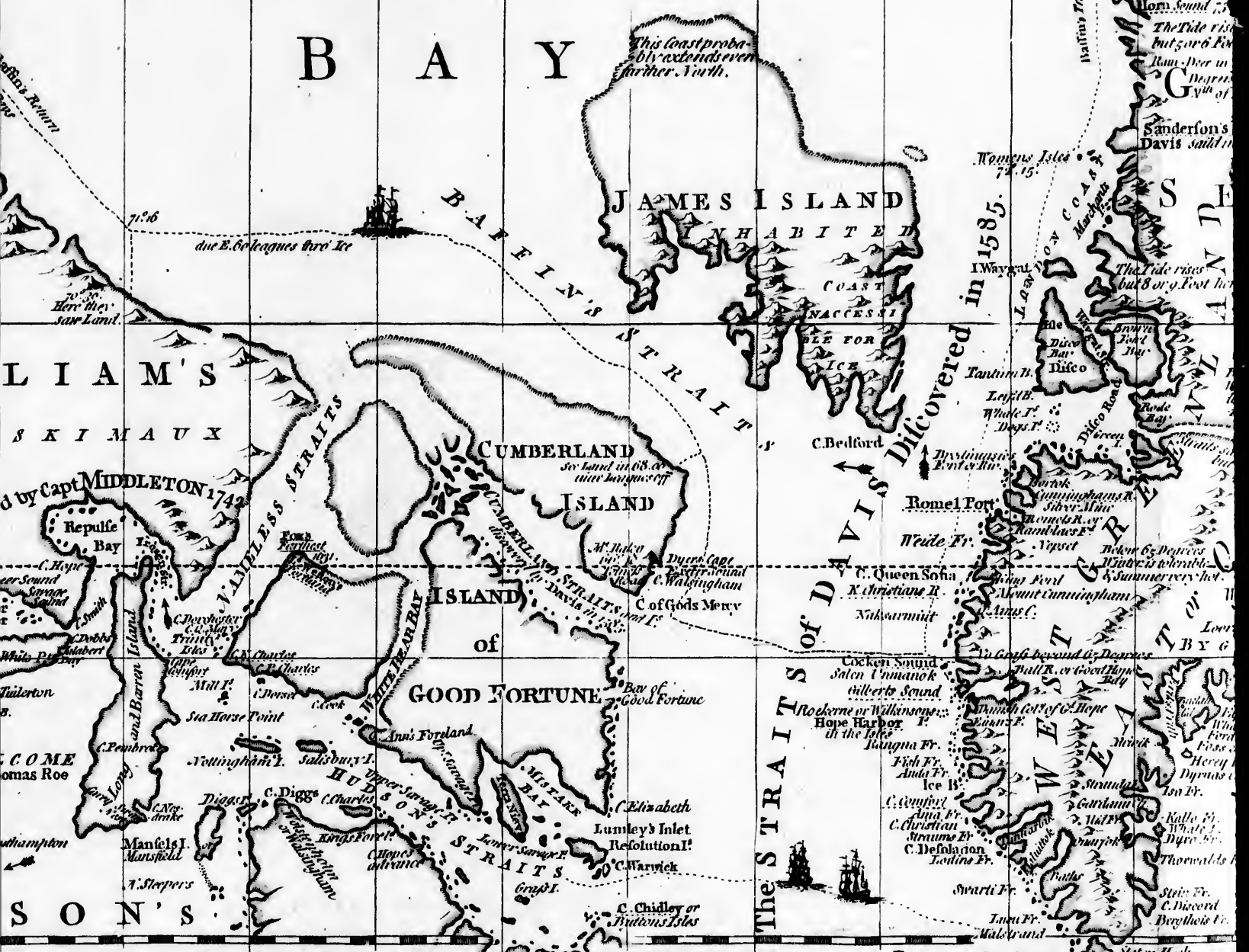
This whole Discovery was made in the Search of the N.W. Passage by Capt. Robt. Bilot conducted by Wm. Baffin, in 1616 not 12. Neither did Munck ever enter this Bay, or give it the Name of Christians Sea, as some late Charts and Maps English as well as French, would have it.

Ship in open Sea 73° 30' met the Ice 20 Leagues from Land.

23 June in this Lat. the Sails and Rigging froze yet was the cold tolerable.

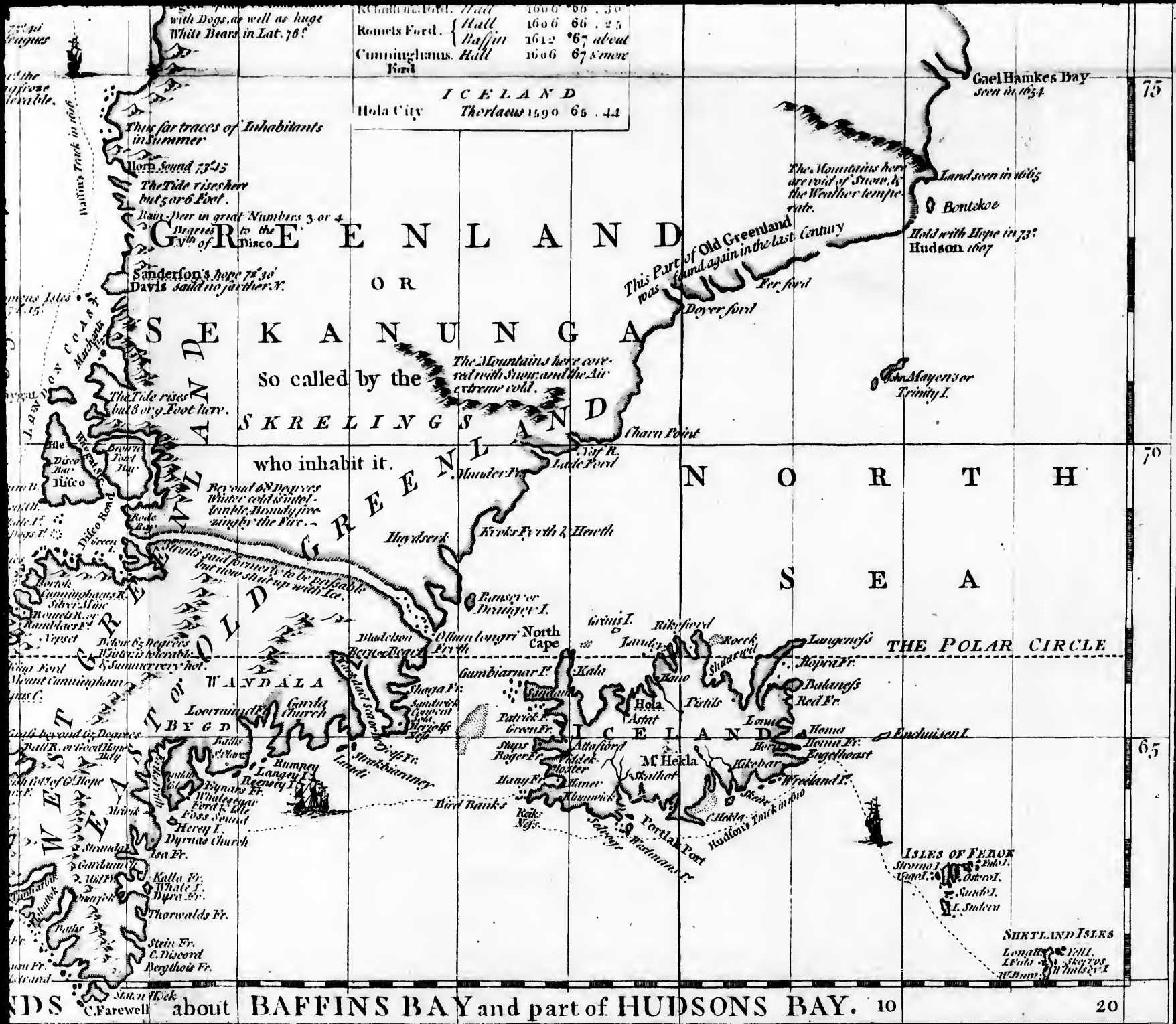
B A Y

This Coast probably extends even further North.



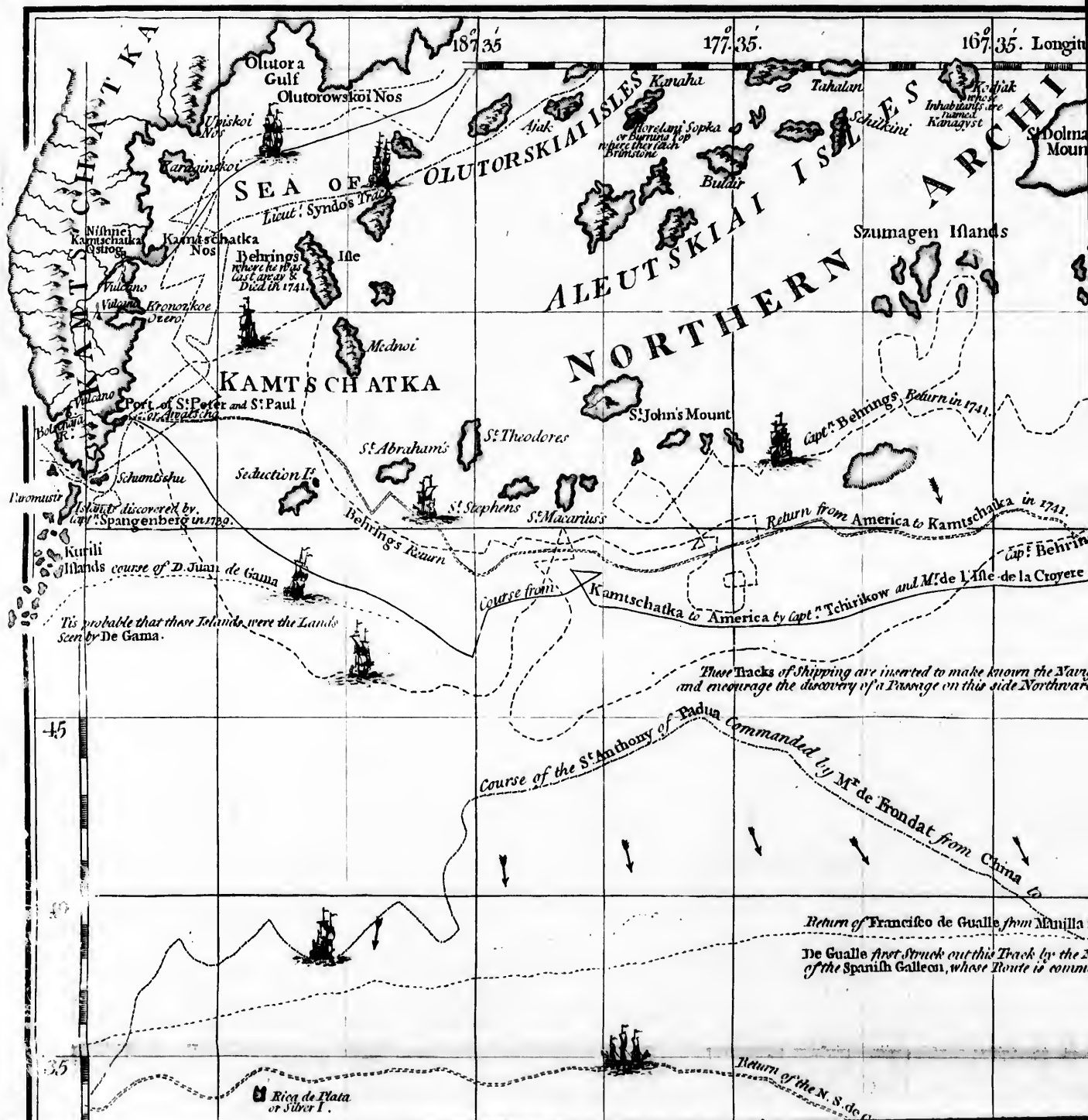
comprizing GREENLAND with the COUNTRIES and ISLANDS

60 50 40 30

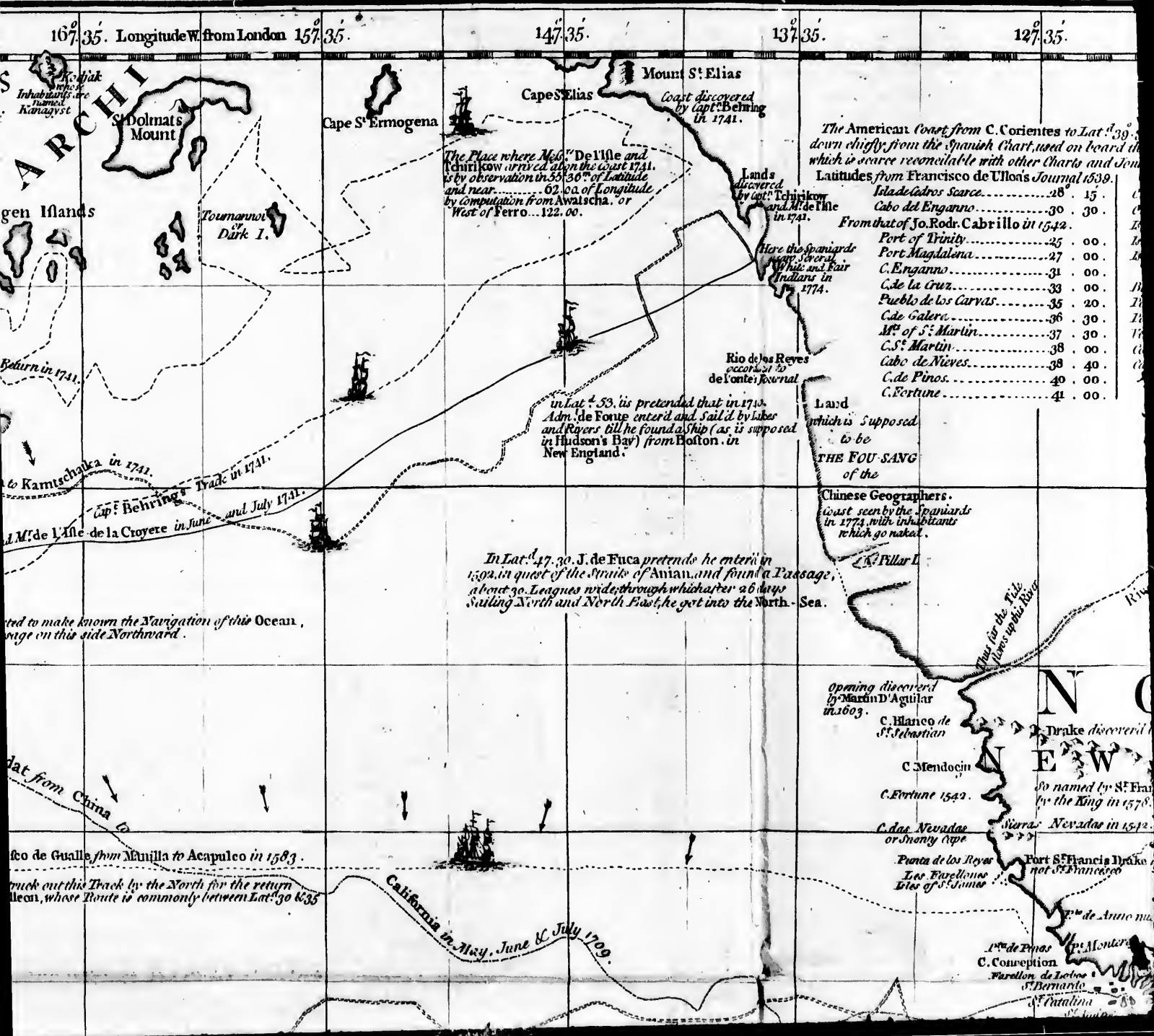


CHART, containing the Coasts of CALIFORNIA, NEW ALBION

And ISLAND S. dispers'd



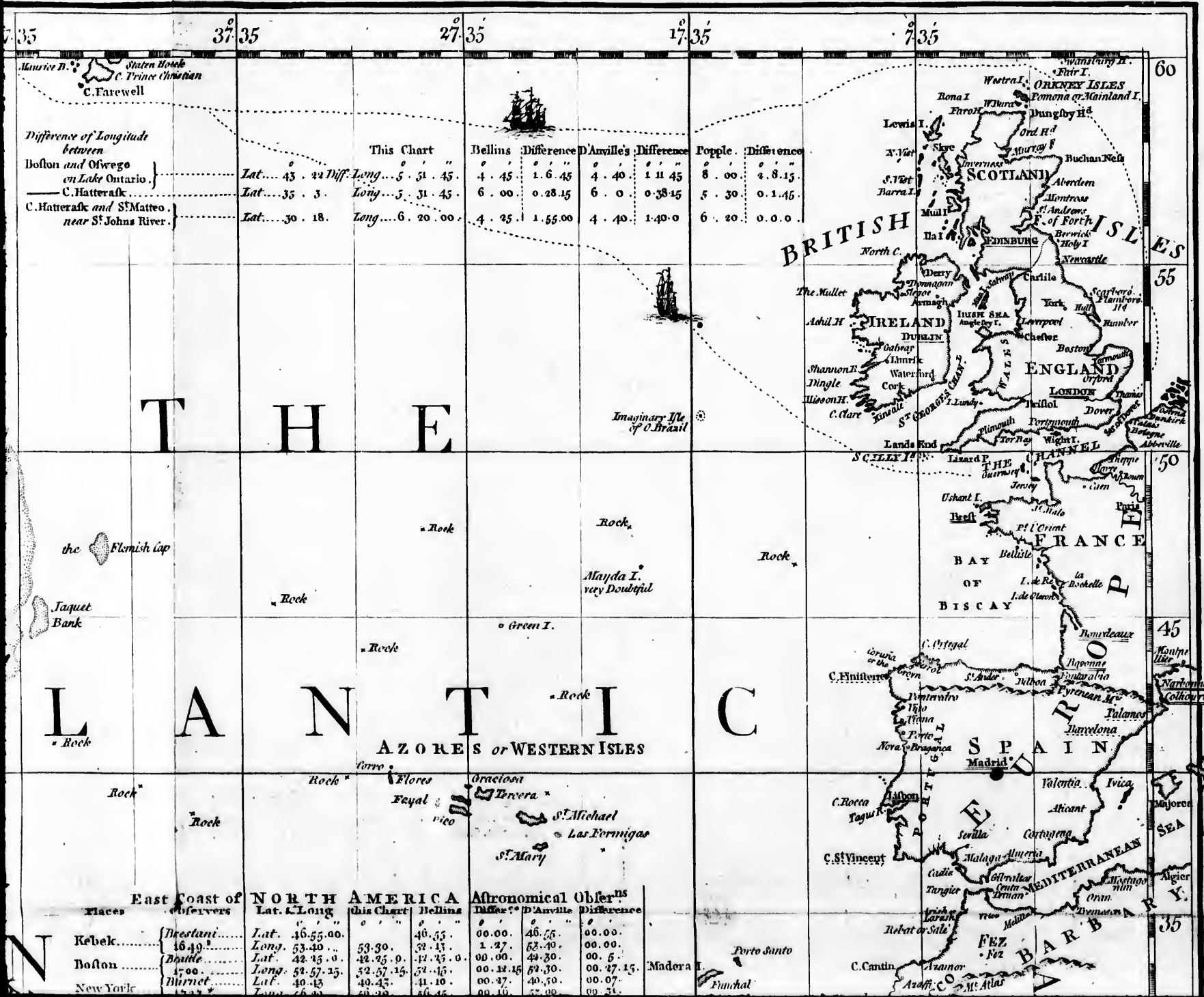
NEW ALBION, and *RUSSIAN DISCOVERIES* to the North; with the Peninsula of KAMTSCHIATKA, and the *ISLANDS*, dispersed over the *PACIFIC OCEAN*, to the North of the *LINE*.



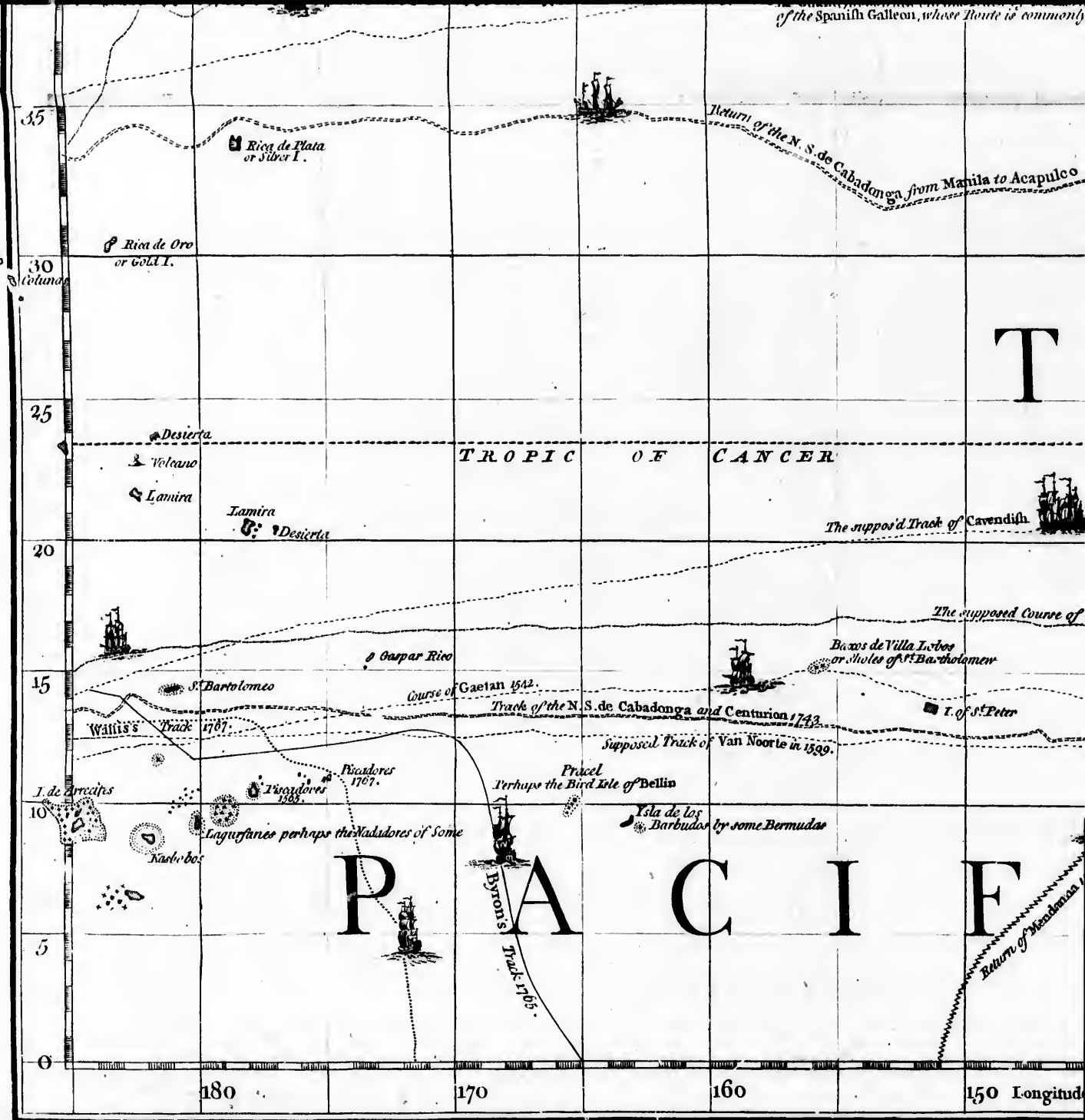
NORTH AMERICA and THE WEST IN with the opposite Coasts of EUROPE and AFR



WEST INDIES, E and AFRICA.



of the Spanish Galleon, whose Route is commonly



Published according to Act of Parli

... whose Route is commonly between Lat^o 30 & 35

from Manila to Acapulco in 1743.

... in May, June & July 1709.

P^{to} de Aneto nu...
 P^{to} de Pinos
 C. Concepcion
 Farellon de Lozino &
 S^{to} Bernarte
 S^{to} Catalina
 S^{to} Andre
 I. S^{ta} Maria
 D. S^{to} Quintin
 I. de todos Santos
 C. N...
 I. Guadalupe
 I. de Pinos
 Meric
 Far...

T H E

Return of Mendanna 1588.

Donna Maria Laxara
by De Ma^o S^{ta} Maria la Garta

I. de Pasaros
or Birds I.

Land seen by Mendanna
in 1588.

Ulut

Track of Cavendish



Los Moriges

La Disgraciada

The supposed Course of Spilbergen in 1616.

La Lobo
S^{to} Bartholomew

I. de San Francisco



La Mesa

Course of Gaetan 1571

I. of S^{ta} Peter

Course of Gaetan 1572

Roca Partida



Track of the N. S. de Cabadonga and the Centurion 1743.

Bay of Manuel
Rodriguez



Track of Van Noorte in 1599.

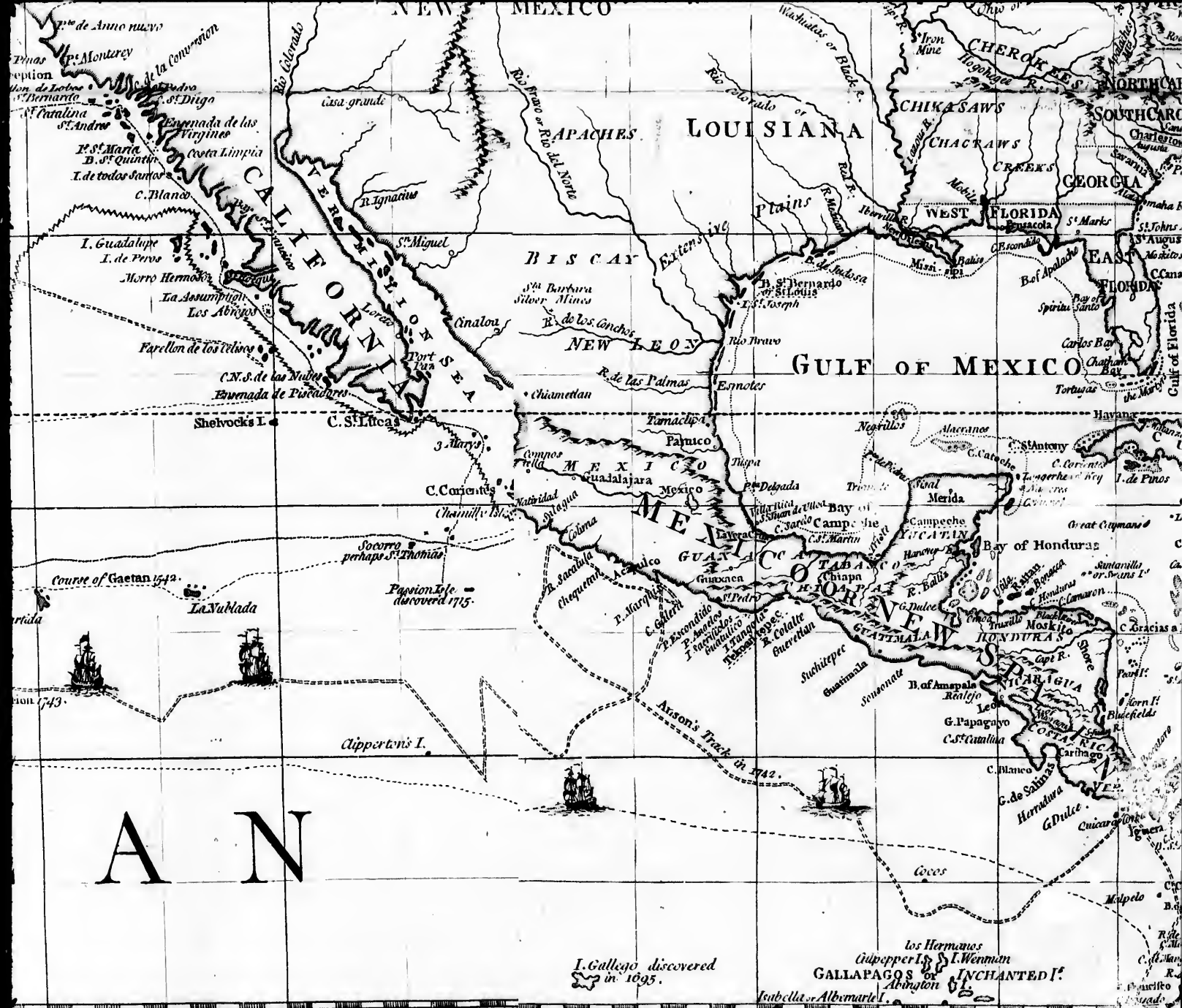
F I C O C E A

Return of Mendanna 1588.

THE EQUINOCTIAL LINE

150 Longitude W. from Ferro	140	130	120	110
-----------------------------	-----	-----	-----	-----

... according to Act of Parliament. 30 June 1775. by R. Sayer & J. Bennett. N^o 53 in Fleet Street.



AN

I. Gallego discovered
in 1695.

los Hermanos
Culpepper I. & I. Wenman
GALLAPAGOS or INCHANTED I.
Abington

110 100 90 80 70



Places	East Coast of America	Observers
Kebek	1640	Brestani
Boston	1700	Brulle
New York	1723	Burnet
New Orleans	1731	Darwin
La Vera Cruz	1742	Harris

Bermudas or Summers I? *This often taken for Bermudas*

TROPIC OF CANCER

Places.	North Coast of South America	Observers.
Puertobello, or Portobelo	1704	Feuille
Cartagena	1704	P. Feuille
St. Martha	1723	D. Herrera
Porto Cabello	1704	Feuille
Cayenne	1672	Richter
	1744	Condamin

Our Lat. of Cayenne the same

St. Mary

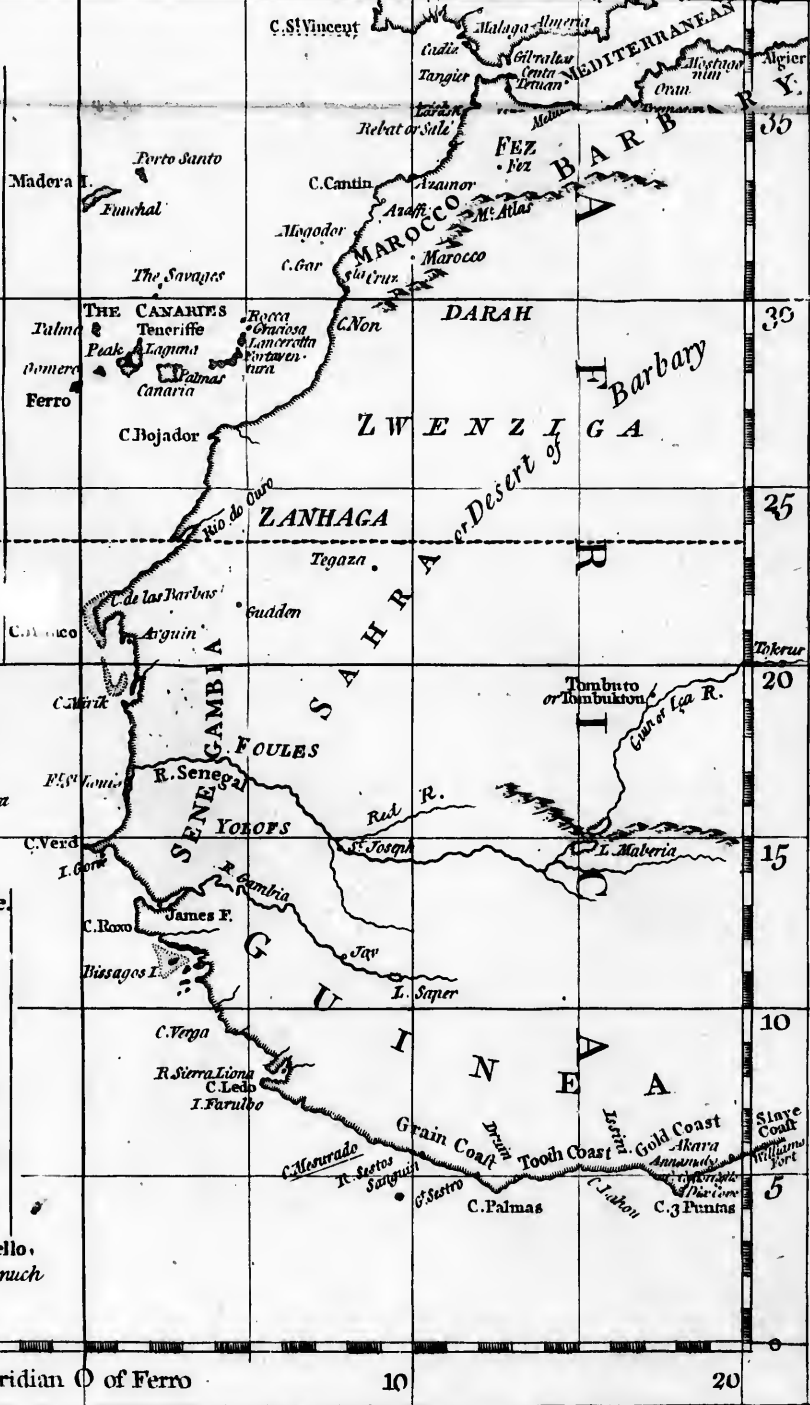
C. St. Vincent

East Coast of NORTH AMERICA
Places Observers

Lat. & Long.
this Chart Bellins

Astronomical Observations
Difference D'Anville

Kehek.....	Drestani 1649 [*]	Lat. 40.55.00. Long. 53.40.00.	40.55.00. 53.40.00.	40.55. 53.40.	00.00. 1.27.	40.55. 53.40.	00.00. 00.00.
Boston.....	Beault 1700 [*]	Lat. 42.25.00. Long. 52.57.25.	42.25.00. 52.57.25.	42.25. 52.57.	00.00. 00.12.15.	42.25. 52.57.	00.5. 00.47.15.
New York.....	Burnet 1723 [*]	Lat. 40.45. Long. 56.29.	40.45. 56.29.	40.45. 56.45.	00.47. 00.16.	40.45. 56.00.	00.07. 00.51.
New Orleans.....	Baron 1731 [*]	Lat. 29.57.47. Long. 74.16.00.	29.57.47. 74.16.00.	29.57.47. 74.16.00.	00.00. 00.00.	29.57.47. 74.16.00.	00.00. 00.00.
La Vera Cruz.....	Harris 1747 [*]	Lat. 19.12. Long. 79.50.	19.12. 79.50.	19.12. 80.13.	00.2. 00.23.	19.12. 79.40.	00.00. 10.00.



THE ISLANDS

Havana in CUBA	D. Gamboa 1720 [*]	Lat. 23.11.52. Long. 64.38.10.	23.10. 64.5.	23.10. 64.5.	00.00. 00.00.	23.10. 64.18.	00.00. 00.13.
Port Royal in JAMAICA	Candler 1742 [*]	Lat. 18.00. Long. 59.4.	18.00. 59.50.	18.00. 59.30.	00.00. 00.20.	18.00. 59.36.	00.32. 00.14.
Petit Goave in S. DOMINGO	Wagner 1735 [*]	Lat. 18.27. Long. 55.15.	18.27. 55.15.	18.23. 55.25.	00.4. 00.00.	18.30. 55.5.	00.3. 00.10.
Leogane in S. DOMINGO	Hays 1082 [*]	Lat. 18.40. Long. 1082.	18.40. 1082.	18.40. 54.58.	00.00. 00.00.	18.38. 54.47.	00.00. 00.00.
Cape Francis S. DOMINGO	Laval 1717 [*]	Lat. 19.40. Long. 53.35.	19.40. 53.35.	19.48. 54.15.	00.08. 00.00.	19.46. 53.44.	00.00. 00.00.
St. Thomas MARTINICO	Fauille 1705 [*]	Lat. 18.21. Long. 40.53.	18.21. 40.53.	18.24. 40.53.	00.6. 00.4.	18.26. 40.53.	00.4. 00.00.
Virgin Gorda Port	Candler 1717 [*]	Lat. 18.18. Long. 46.30.	18.18. 46.30.	18.27. 46.32.	00.9. 00.28.	18.27. 46.16.	00.9. 00.00.
St. Peters Fort MARTINICO	Hays 1682 [*]	Lat. 14.44. Long. 43.41.15.	14.44. 43.35.	14.44. 43.32.	00.00. 00.00.	14.44. 43.28.	00.00. 00.00.

CAPE VERD ISLANDS

- St. Anthony*
- St. Vincent*
- St. Nicholas*
- St. Jago*
- Brava*
- Fogo*
- St. Lucia*
- Sal*
- Boavieta*
- Mayo*

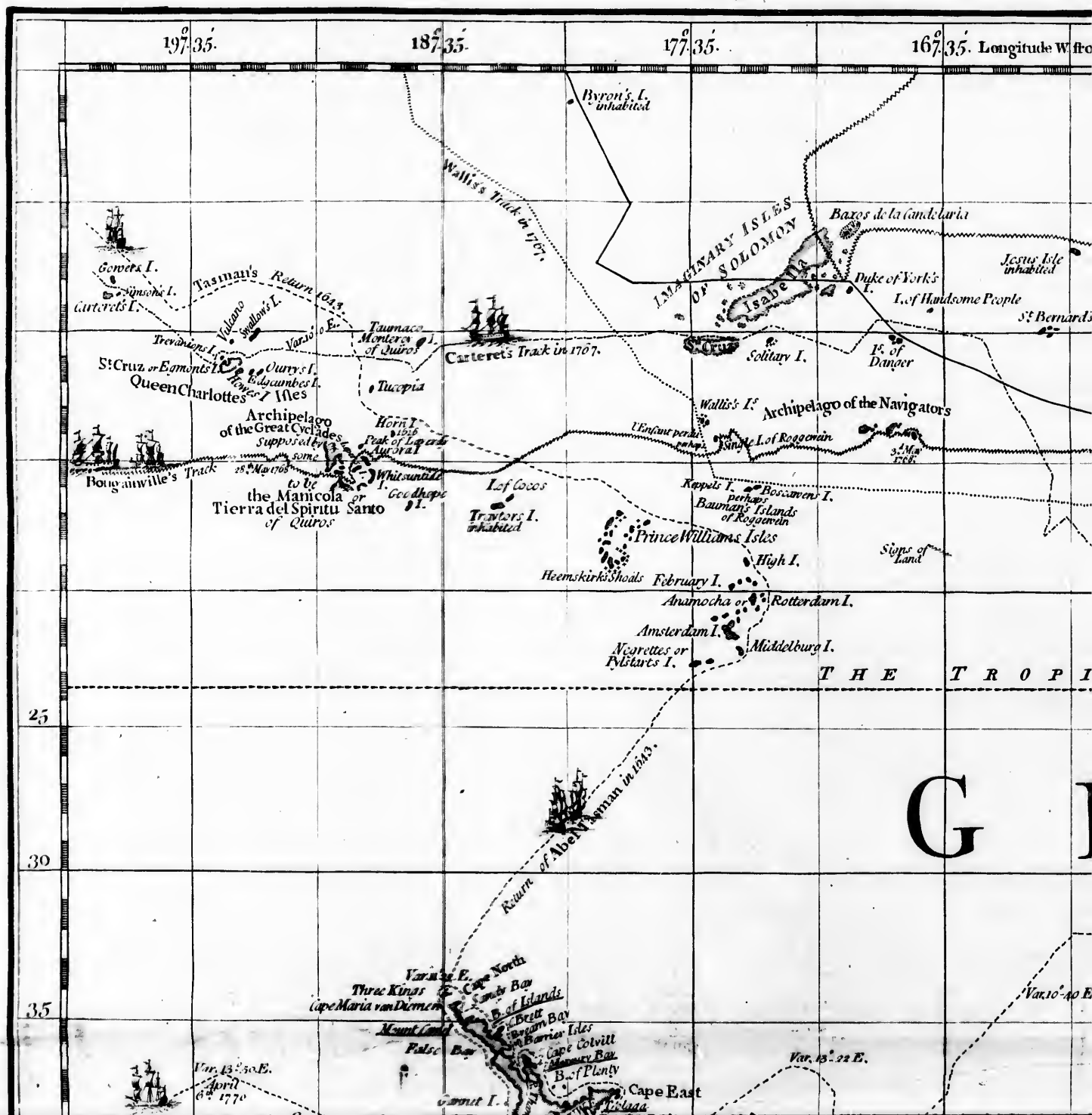
North Coast of SOUTH AMERICA
Astronomical Observations.

Places.	Observers.	Situation.	this Chart.	Bellins.	Difference.
Puertobello, or Portobelo.	Fauille, 1704 [*]	Lat. 9. 33. 5.	9. 33. 5.	9. 28. 0.	05. 5.
	P. Fauille, 1704 [*]	Long. 62. 10.	62. 10.	62. 18.	00. 8.
Cartagena.	Fauille, 1704 [*]	Lat. 10. 30. 25.	10. 30. 25.	10. 23. 0.	00. 7.
	D. Herrera, 1724 [*]	Long. 57. 50. 0.	58. 00.	57. 55.	00. 5.
St. Martha.	D. Herrera, 1723 [*]	Lat. 10. 26. 35.	10. 26. 35.	10. 23. 0.	00. 7.
	Fauille, 1704 [*]	Long. 57. 46. 15.	58. 00.	57. 55.	00. 5.
Porto Cabello.	D. Herrera, 1723 [*]	Lat. 11. 19. 53.	11. 19. 53.	11. 19. 0.	00. 00.
	Fauille, 1704 [*]	Long. 66. 24. 30.	66. 24. 30.	66. 24. 30.	00. 00.
Cayenne.	Richer, 1672 [*]	Lat. 10. 50. 50.	10. 10. 0.	10. 17. 0.	00. 7.
	Condamine, 1744 [*]	Long. 43. 52.	50.	50. 43.	00. 43.
	Richer, 1672 [*]	Lat. 4. 56. 17.	4. 56. 17.	4. 56. 17.	00. 00.
	Condamine, 1744 [*]	Long. 34. 45.	35. 30.	35. 45.	00. 15.

Our Chart differs from M^r. D'Anville's Map, in the Long^d of Puertobello, Lat^d of Cartagena, and Long^d of St. Martha, Lat^d and Long^d of P. Cabello, much the same as from M^r. Bellins' Chart.

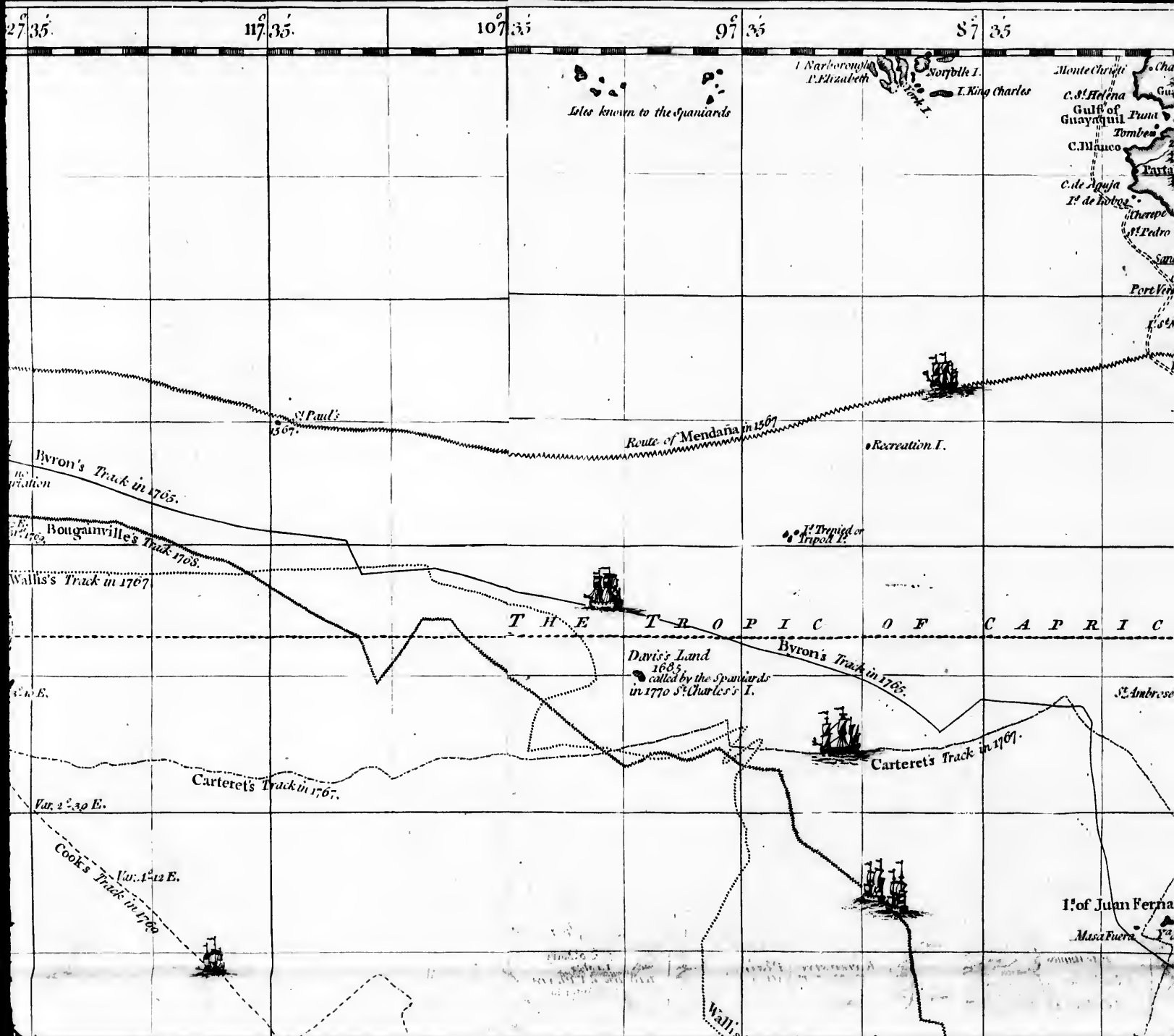
30 20 10 The Meridian 0 of Ferro 10 20

CHART containing the greater part of the SOUTH

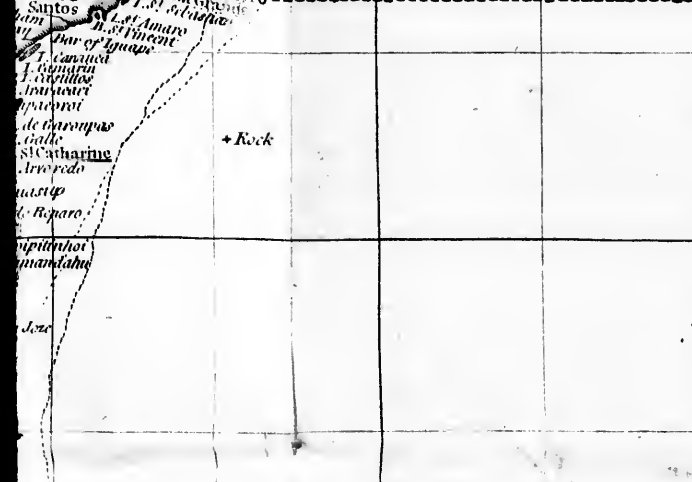
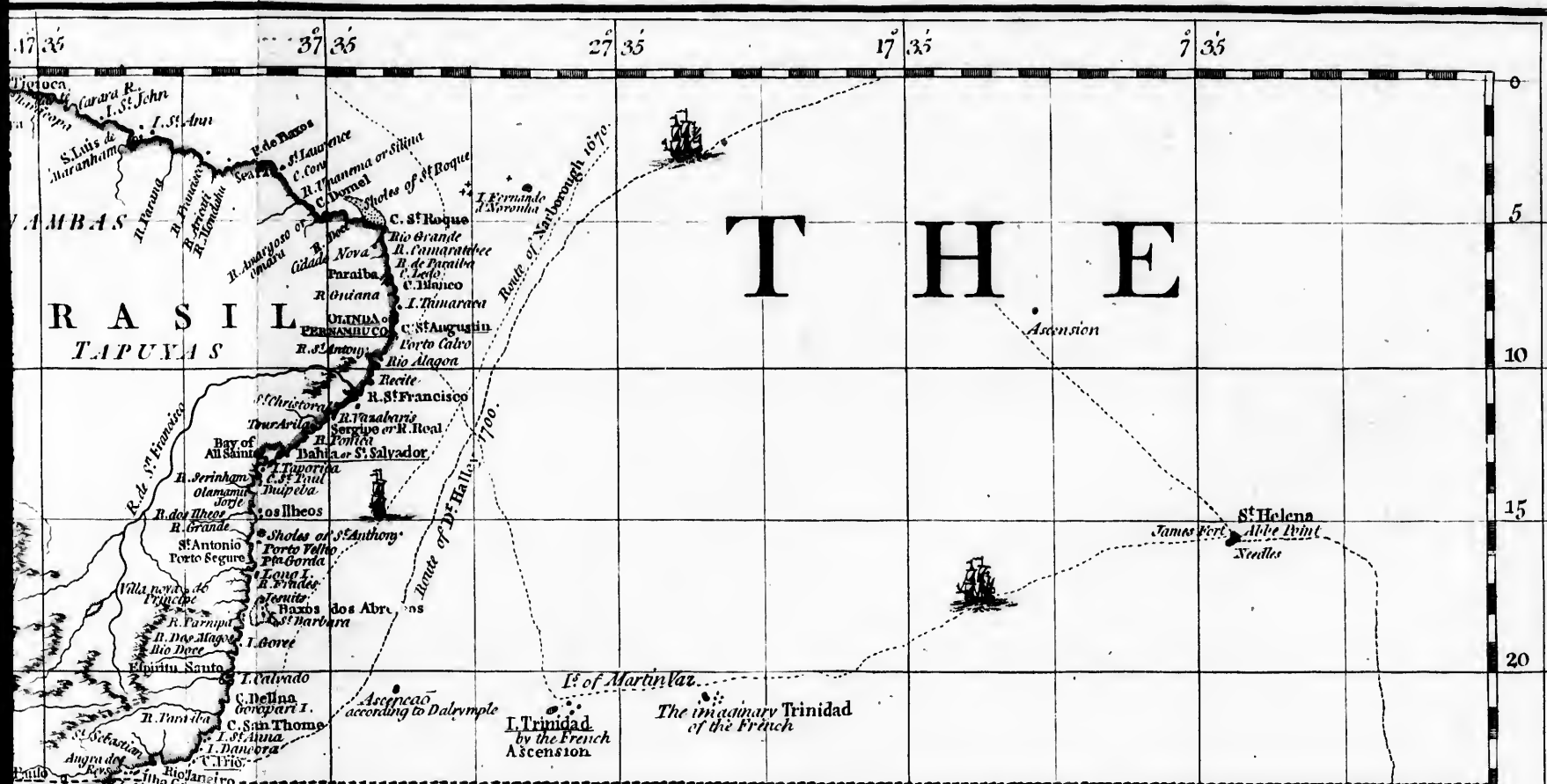


thro' the fame.

SOUTH

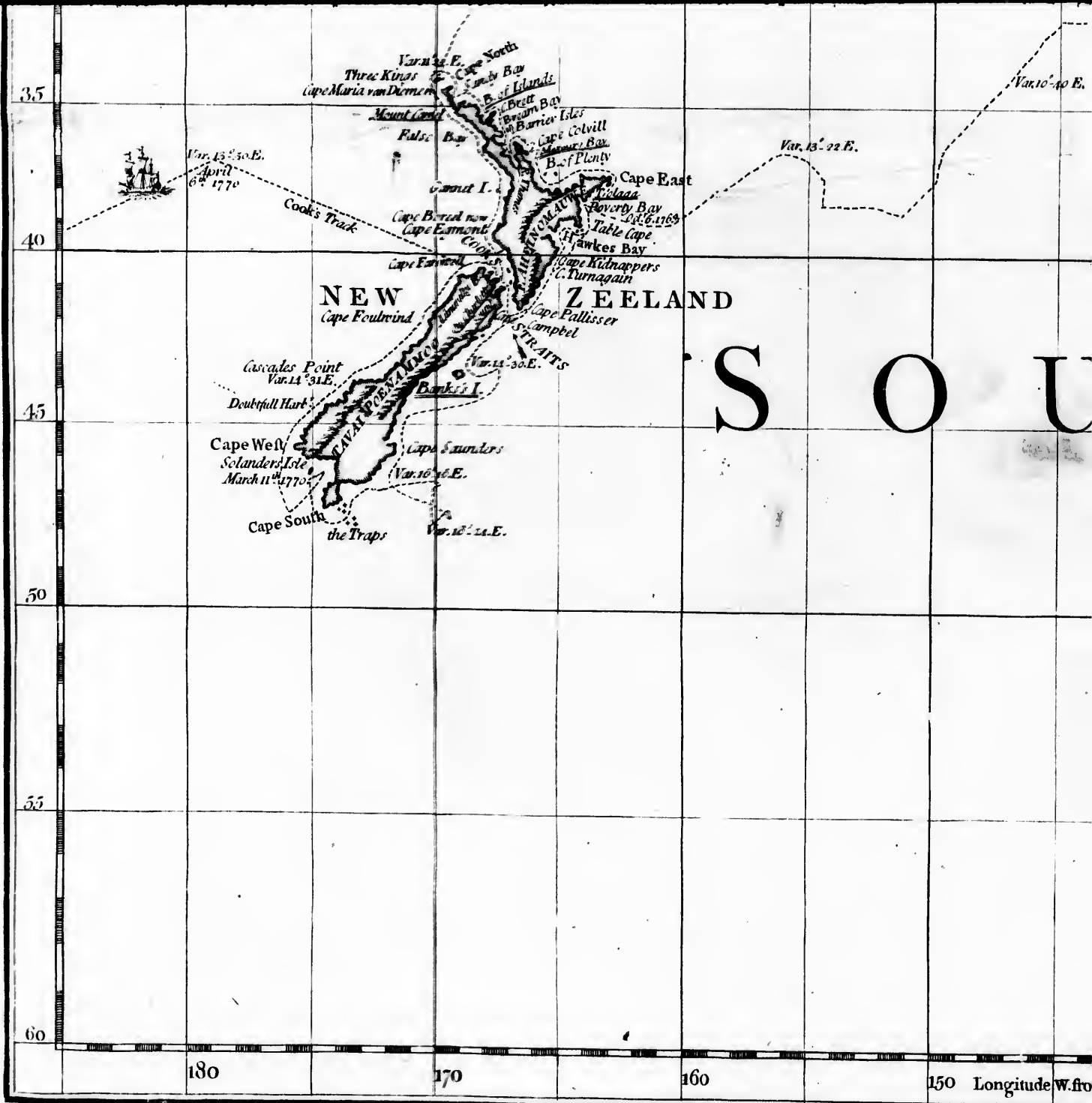


NORTHERN OCEAN and SOUTH SEA .

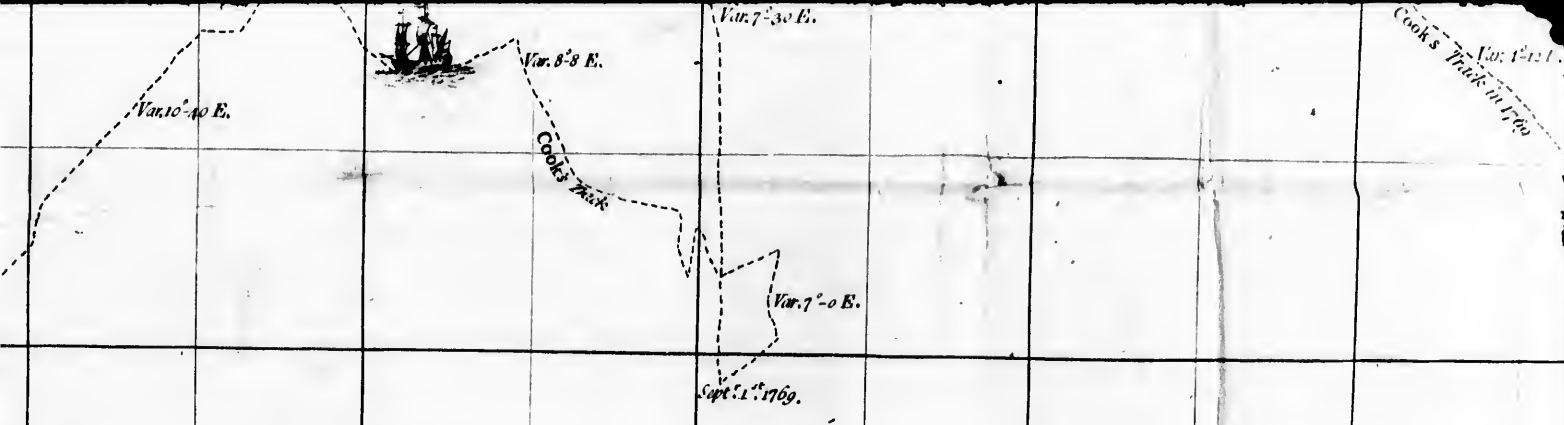


Places .	Observers .	EAST COAST.					
		Situation .	(his Chart)	Bellins .	Difference	D'Anville .	Difference
Olinda	Margraf Lat.	7 . 48 .					
	1642 Long.	16 . 20 .					
	Cannacis des Lat.	8 . 15 .	8 . 15 .	8 . 15 .	00 . 00 .	16 . 30 .	1 . 00 .
Buenos Ayres	Tens Long.	17 . 30 .	17 . 30 .	17 . 30 .	00 . 00 .		
	Féuillee Lat.	34 . 34 . 38	34 . 34 . 38	34 . 34 . 38	00 . 00 .	34 . 34 . 38	00 . 00 .
Cape Blanco	1700 Long.	32 . 25 .					
	corrected by D. Halley	40 . 25 .	42 . 5 .	40 . 25 .	1 . 40 .	42 . 5 .	00 . 00 .
Port Desire	Narborf Lat.	47 . 20 .	47 . 10 .	47 . 10 .	00 . 00 .	47 . 10 .	00 . 00 .
	1670 Long.	52 . 25 .					
Rio Gallego	49 . 59 .	49 . 59 .	46 . 30 .	3 . 29 .	50 . 00 .	00 . 1 .	
	Wood Lat.	47 . 48 .	47 . 48 .	47 . 40 .	0 . 8 .	47 . 45 .	00 . 3 .
St Catherine Island	1670 Long.	55 . 25 .	50 .	47 . 30 .	2 . 30 E.	50 . 15 .	00 . 15 W.
	P. Mascardi Lat.	52 . 00 .	52 . 00 .	51 . 37 .	0 . 23 .	52 . 00 .	00 .
St Helena	1653 Long.	48 . 00 .	53 . 25 .	48 . 00 .	5 . 10 E.	53 . 10 .	00 . 15 E.
	Legg Lat.	27 . 35 .	27 . 30 .	27 . 30 .	. 5 .	27 . 50 .	. 15 .
	1711 Long.	31 . 37 .	31 . 37 .	30 . 30 .	1 . 7 .	31 . 30 .	. 7 .

SOUTH SEA .



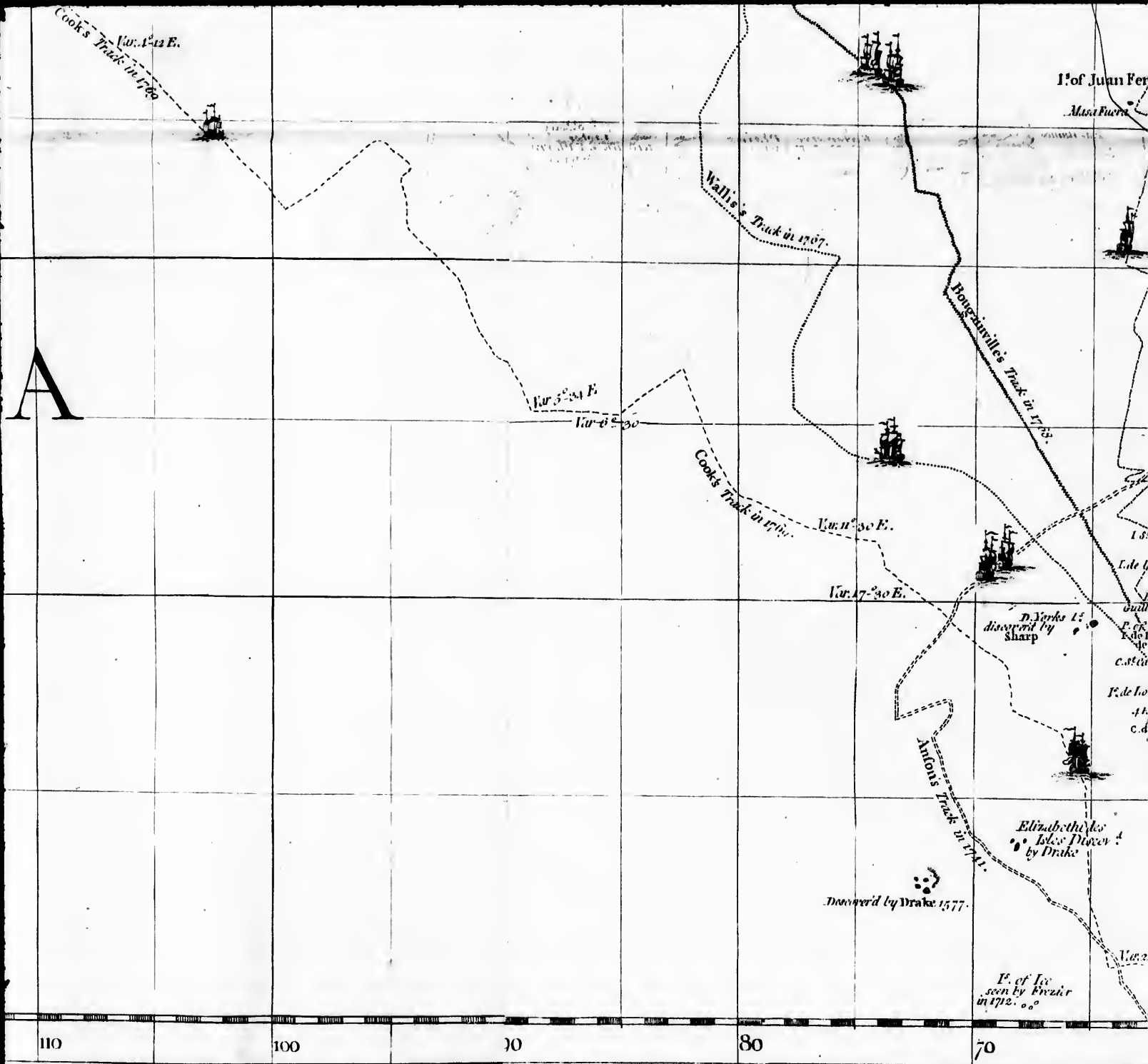
Published according to Act of Parliament. 1795



S O U T H S E A

150	Longitude W. from Ferro	140		130		120		110
-----	-------------------------	-----	--	-----	--	-----	--	-----

By Act of Parliament. 10 June 1773. by R. Sayer & J. Bennett, N^o 53 in Fleet Street.





WEST COAST OF SOUTH AMERICA

Places.	Observers.	Situation		this Chart.	Bellins.
		d. m. s.	d. m. s.		
Panama	D. Herrera	Latit.	8. 58. 50	8. 58. 50	8. 58. 0
	1729?	Long.	62. 6. 0	62. 6. 0	62. 30. 0
	Foullé	Latit.	12. 1. 15	12. 1. 15	12. 14. 10
Lima	1710	Long.	50. 9. 30	50. 45.	50. 45.
	D. Peraltá	Latit.	12. 14. 40		
	1720	Long.	50. 45.		
Ilo	Foullé	Latit.	17. 36. 45	17. 36. 15	17. 30.
	1710	Long.	53. 33. 0	53. 33. 0	54. 40.
	1710	Latit.	13. 26. 38	13. 26. 38	13. 26. 38
Arica	1710	Long.	53. 31.	53. 31.	53. 31.
	Foullé	Latit.	20. 51. 20	20. 51. 20	20. 51. 20
	1710	Long.	53. 35. 45	53. 35. 45	53. 35. 15
Coquimbo	Foullé	Latit.	33. 0. 19	33. 0. 19	33. 0. 19
	1709	Long.	54. 29. 15	54. 30. 15	54. 30. 15
	Foullé	Latit.	36. 42. 53	36. 42. 53	36. 42. 53
Valparaiso	1709	Long.	55. 32. 30	55. 32. 30	55. 32. 30
	Frazier	Latit.	39. 26.	39. 26.	39. 26.
	1712	Long.	55. 45.	55. 00.	55. 00.
Cape Pilares str. of Magellan		Latit.	53. 15.	53.	53.
		Long.	59. 50.	59. 50.	59. 50.
		Long.			

Published according to Act of Parliament, 10 June 1775, by R. Sayer & J. Bennett, N^o. 53 in Fleet St.

Cape Blanco	1670. 0	Lat. 52. 25.	47. 10.	47. 10.	00. 00.	47. 10.	00. 00.
		Long. 49. 59.	49. 59.	46. 30.	3. 29.	50. 00.	00. 1.
		by his reckoning	47. 48.	47. 40.	0. 8.	47. 45.	00. 3.
Port Desire	1670. 0	Lat. 55. 25.	50.	47. 30.	2. 30 E.	50. 15.	00. 17 W.
		Long. 52. 00.	52. 00.	51. 37.	0. 23.	52. 00.	00.
		P. Mascardi	48. 00.	53. 25.	5. 10 E.	53. 10.	00. 45 E.
Rio Gallego	1653. 0	Lat. 48. 00.	53. 25.	48. 00.	5. 10 E.	53. 10.	00. 45 E.
		Long. 27. 35.	27. 35.	27. 30.	0. 5.	27. 50.	00. 15.
S ^t Catherine Island	1741. 0	Lat. 31. 37.	31. 37.	30. 30.	1. 7.	31. 30.	00. 7.
		Long. 31. 37.	31. 37.	30. 30.	1. 7.	31. 30.	00. 7.

SOUTH SEAS

SOUTH AMERICA, EASTSIDE.

COAST OF SOUTH AMERICA,

	Situation	this Chart.	Bellin's.	Difference.	D'Anville.	Difference.
	d. m. s.	d. m. s.	d. m. s.	d. m. s.	d. m. s.	d. m. s.
Latit.	8. 38. 50	8. 38. 50	8. 38. 0	0. 00. 50	8. 38. 50	0. 00. 00
Long.	61. 6. 0	62. 6. 0	62. 30.	0. 24.	62. 6.	0. 33. 30
Latit.	12. 1. 15	12. 1. 15	12. 14. 46	0. 13. 31	12. 1. 15	0. 00. 00
Long.	50. 9. 30	59. 45.	59. 45.	0. 0.	59. 9. 30	0. 33. 30
Latit.	12. 14. 46	12. 14. 46	12. 14. 46	0. 0.	12. 14. 46	0. 0.
Long.	59. 45.	59. 45.	59. 45.	0. 0.	59. 45.	0. 0.
Latit.	17. 36. 15	17. 36. 15	17. 30.	0. 6.	17. 36. 15	0. 0.
Long.	55. 33.	55. 33. 0	54. 40.	1. 7.	55. 33.	0. 0.
Latit.	18. 26. 38	18. 26. 38	18. 26. 38	0. 0.	18. 26. 38	0. 0.
Long.	53. 31.	53. 31.	53. 31.	0. 0.	52. 33.	0. 58.
Latit.	29. 51. 20	29. 51. 20	29. 54. 26	0. 0.	29. 54. 26	0. 0.
Long.	53. 35. 45	53. 35. 45	53. 35. 45	0. 0.	53. 35. 45	0. 0.
Latit.	33. 0. 19	33. 0. 19	33. 0. 19	0. 0.	33. 0. 19	0. 0.
Long.	54. 29. 15	54. 29. 15	54. 29. 15	0. 0.	54. 29. 15	0. 0.
Latit.	36. 42. 53	36. 42. 53	36. 42. 53	0. 0.	36. 42. 53	0. 0.
Long.	55. 32. 50	55. 32. 50	55. 32. 50	0. 0.	55. 32. 50	0. 0.
Latit.	59. 26.	59. 26.	59. 26.	0. 0.	59. 10.	0. 14.
Long.	55. 45.	55. 45.	55. 00.	0. 45.	56. 5.	0. 23.
Latit.	53. 15.	53. 15.	53.	0. 15.	53. 5.	0. 10.
Long.	59. 50.	59. 50.	59. 30.	2. 20.	59. 10.	0. 10.

SOUTH AMERICA, EASTSIDE.

COMPARATIVE TABLE.

Places.	Observers.	Situation	this Chart.	Bellin's.	Difference.	D'Anville.	Difference.
Port St Julian	Narborough	Lat.	49. 10.	49. 10.	0. 20.	49. 10.	00. 00.
		Long.	51. 13.	51. 00.	3. 25.	50. 45.	00. 15 E.
Cape Virgins	Narborough	Lat.	52. 26.	52. 26.	00. 14.	52. 20.	00. 6.
		Long.	53. 45.	53. 30.	3. 45.	53. 00.	00. 30 E.
Straits le Maire		Lat.	54. 40.	54. 40.	00. 00.	54. 40.	00. 00.
		Long.	51. 00.	44. 00.	7. 00.	51. 10.	00. 00.
Cape Horn		Lat.	55. 45.	55. 40.	00. 5.	55. 45.	00. 00.
		Long.	53. 40.	48. 30.	5. 10.	53. 40.	00. 00.

30

20 Longitude W. from Ferro

10

0

10

20

