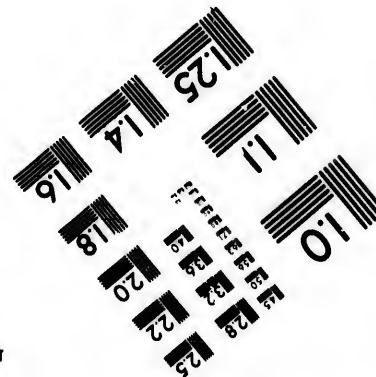
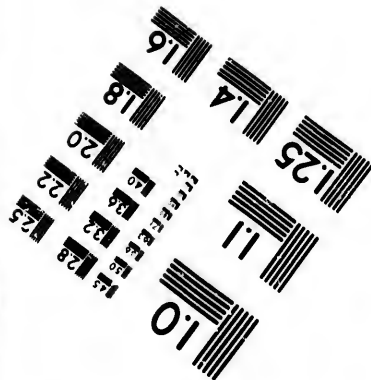
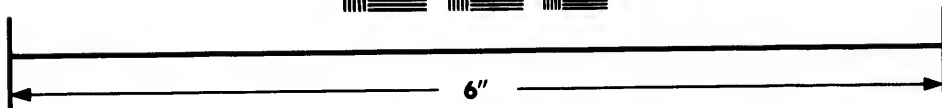
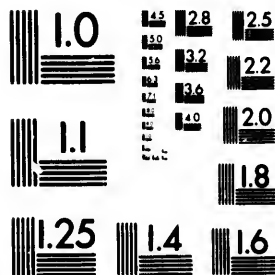


**IMAGE EVALUATION
TEST TARGET (MT-3)**



**Photographic
Sciences
Corporation**

23 WEST MAIN STREET
WEBSTER, N.Y. 14580
(716) 872-4503



**CIHM/ICMH
Microfiche
Series.**

**CIHM/ICMH
Collection de
microfiches.**



Canadian Institute for Historical Microreproductions / Institut canadien de microreproductions historiques



© 1984

Technical and Bibliographic Notes/Notes techniques et bibliographiques

The Institute has attempted to obtain the best original copy available for filming. Features of this copy which may be bibliographically unique, which may alter any of the images in the reproduction, or which may significantly change the usual method of filming, are checked below.

L'Institut a microfilmé le meilleur exemplaire qu'il lui a été possible de se procurer. Les détails de cet exemplaire qui sont peut-être uniques du point de vue bibliographique, qui peuvent modifier une image reproduite, ou qui peuvent exiger une modification dans la méthode normale de filmage sont indiqués ci-dessous.

- Coloured covers/
Couverture de couleur
- Covers damaged/
Couverture endommagée
- Covers restored and/or laminated/
Couverture restaurée et/ou pelliculée
- Cover title missing/
Le titre de couverture manque
- Coloured maps/
Cartes géographiques en couleur
- Coloured ink (i.e. other than blue or black)/
Encre de couleur (i.e. autre que bleue ou noire)
- Coloured plates and/or illustrations/
Planches et/ou illustrations en couleur
- Bound with other material/
Relié avec d'autres documents
- Tight binding may cause shadows or distortion along interior margin/
La reliure serrée peut causer de l'ombre ou de la distorsion le long de la marge intérieure
- Blank leaves added during restoration may appear within the text. Whenever possible, these have been omitted from filming/
Il se peut que certaines pages blanches ajoutées lors d'une restauration apparaissent dans le texte, mais, lorsque cela était possible, ces pages n'ont pas été filmées.
- Additional comments:
Commentaires supplémentaires:
- Coloured pages/
Pages de couleur
- Pages damaged/
Pages endommagées
- Pages restored and/or laminated/
Pages restaurées et/ou pelliculées
- Pages discoloured, stained or foxed/
Pages décolorées, tachetées ou piquées
- Pages detached/
Pages détachées
- Showthrough/
Transparence
- Quality of print varies/
Qualité inégale de l'impression
- Includes supplementary material/
Comprend du matériel supplémentaire
- Only edition available/
Seule édition disponible
- Pages wholly or partially obscured by errata slips, tissues, etc., have been refilmed to ensure the best possible image/
Les pages totalement ou partiellement obscurcies par un feuillet d'errata, une pelure, etc., ont été filmées à nouveau de façon à obtenir la meilleure image possible.

This item is filmed at the reduction ratio checked below/
Ce document est filmé au taux de réduction indiqué ci-dessous.

10X	14X	18X	22X	26X	30X
<input type="checkbox"/>	<input type="checkbox"/>	<input type="checkbox"/>	<input type="checkbox"/>	<input checked="" type="checkbox"/>	<input type="checkbox"/>
12X	16X	20X	24X	28X	32X

The copy filmed here has been reproduced thanks to the generosity of:

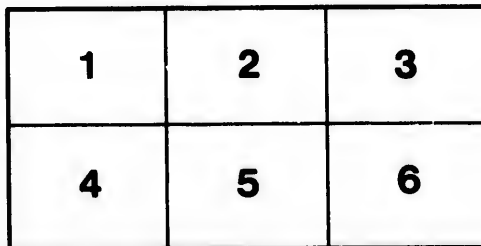
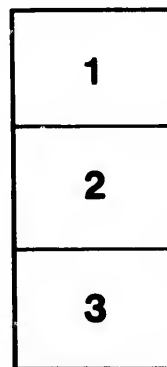
Library of the Public
Archives of Canada

The images appearing here are the best quality possible considering the condition and legibility of the original copy and in keeping with the filming contract specifications.

Original copies in printed paper covers are filmed beginning with the front cover and ending on the last page with a printed or illustrated impression, or the back cover when appropriate. All other original copies are filmed beginning on the first page with a printed or illustrated impression, and ending on the last page with a printed or illustrated impression.

The last recorded frame on each microfiche shall contain the symbol \rightarrow (meaning "CONTINUED"), or the symbol ∇ (meaning "END"), whichever applies.

Maps, plates, charts, etc., may be filmed at different reduction ratios. Those too large to be entirely included in one exposure are filmed beginning in the upper left hand corner, left to right and top to bottom, as many frames as required. The following diagrams illustrate the method:



L'exemplaire filmé fut reproduit grâce à la générosité de:

La bibliothèque des Archives
publiques du Canada

Les images suivantes ont été reproduites avec le plus grand soin, compte tenu de la condition et de la netteté de l'exemplaire filmé, et en conformité avec les conditions du contrat de filmage.

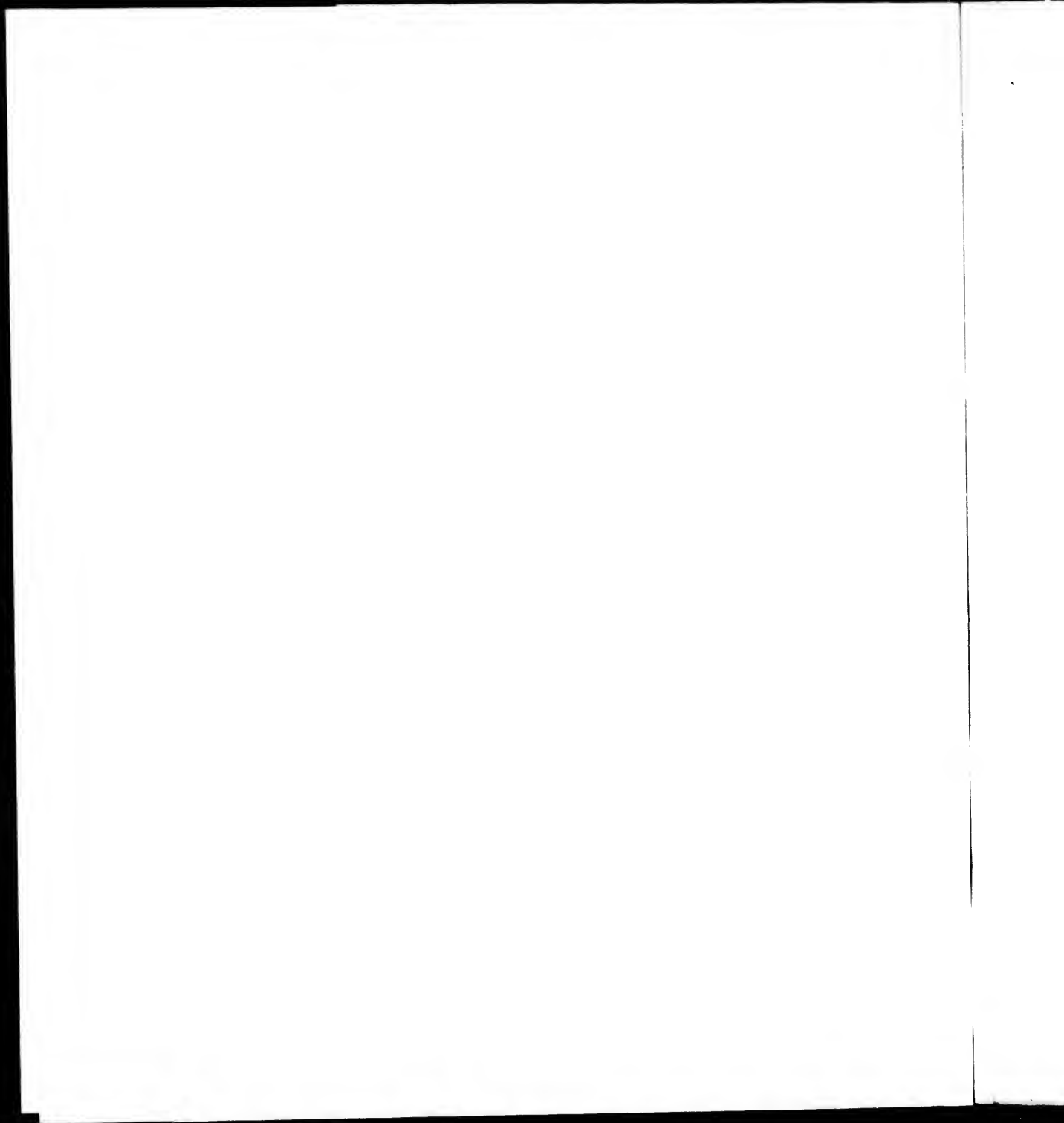
Les exemplaires originaux dont la couverture en papier est imprimée sont filmés en commençant par le premier plat et en terminant soit par la dernière page qui comporte une empreinte d'impression ou d'illustration, soit par le second plat, selon le cas. Tous les autres exemplaires originaux sont filmés en commençant par la première page qui comporte une empreinte d'impression ou d'illustration et en terminant par la dernière page qui comporte une telle empreinte.

Un des symboles suivants apparaîtra sur la dernière image de chaque microfiche, selon le cas: le symbole \rightarrow signifie "A SUIVRE", le symbole ∇ signifie "FIN".

Les cartes, planches, tableaux, etc., peuvent être filmés à des taux de réduction différents. Lorsque le document est trop grand pour être reproduit en un seul cliché, il est filmé à partir de l'angle supérieur gauche, de gauche à droite, et de haut en bas, en prenant le nombre d'images nécessaire. Les diagrammes suivants illustrent la méthode.

errate
to

pelure,
on à



ABSTRACT

OF THE

C E N S U S

OF

THE POPULATION,

AND OTHER

STATISTICAL RETURNS

OF

PRINCE EDWARD ISLAND:

TAKEN IN THE YEAR 1855, BY VIRTUE OF AN ACT OF THE GENERAL ASSEMBLY.

EDWARD WHELAN, QUEEN'S PRINTER.

HA
747
292
1855

68302

First Electoral District

NUMBER OF TOWNSHIPS.	MALES.						FEMALES.						Ages not stated.	Deaf and Dumb.	Blind.	Insane.	Married.	Single.	Total number.	INDIANS.	
	Under 5 years.	From 5 to 16.	From 16 to 21.	From 21 to 45.	From 45 to 60.	Upwards of 60.	Under 5 years.	From 5 to 16.	From 16 to 21.	From 21 to 45.	From 45 to 60.	Upwards of 60.								Males.	Females.
	No. 1.	149	248	88	240	58	37	138	255	94	224	56								22	—
No. 2.	65	111	37	90	30	11	49	100	30	81	25	6	—	—	—	—	189	445	638	—	—
No. 3.	37	108	35	87	26	16	58	106	34	80	20	6	—	—	—	—	165	469	634	—	—
No. 4.	37	73	25	73	21	15	31	65	31	55	16	6	—	—	—	—	138	313	451	—	—
No. 5.	57	100	26	74	20	15	51	84	35	78	16	9	—	—	—	—	156	445	601	—	—
No. 6.	12	33	16	40	10	5	16	32	14	32	10	7	—	—	—	—	71	154	225	—	—
No. 7.	37	70	28	58	22	29	32	61	28	44	15	2	—	—	—	—	108	315	423	—	—
No. 8.	59	74	21	52	17	14	33	52	28	45	19	10	—	—	—	—	97	307	404	—	—
No. 9.	15	26	9	21	6	3	12	23	7	21	5	2	—	—	—	—	47	103	150	—	—
No. 10.	10	17	9	23	5	1	7	18	10	18	7	—	—	—	—	—	50	82	132	—	—
No. 11.	46	71	19	63	19	9	40	68	20	66	13	—	—	—	—	—	133	307	440	—	—
No. 12.	14	31	13	55	10	6	23	43	25	28	10	4	—	—	—	—	66	199	265	—	—
No. 13. (including Lennox Island)	52	72	34	77	27	16	41	96	26	84	22	8	—	—	—	—	157	398	555	—	—
No. 14.	90	132	36	103	36	17	60	122	55	103	29	18	—	—	—	—	244	564	808	—	—
Total.	684	1176	395	1055	307	185	591	1105	437	959	263	117	44	5	2	9	2110	5211	7321	52	42

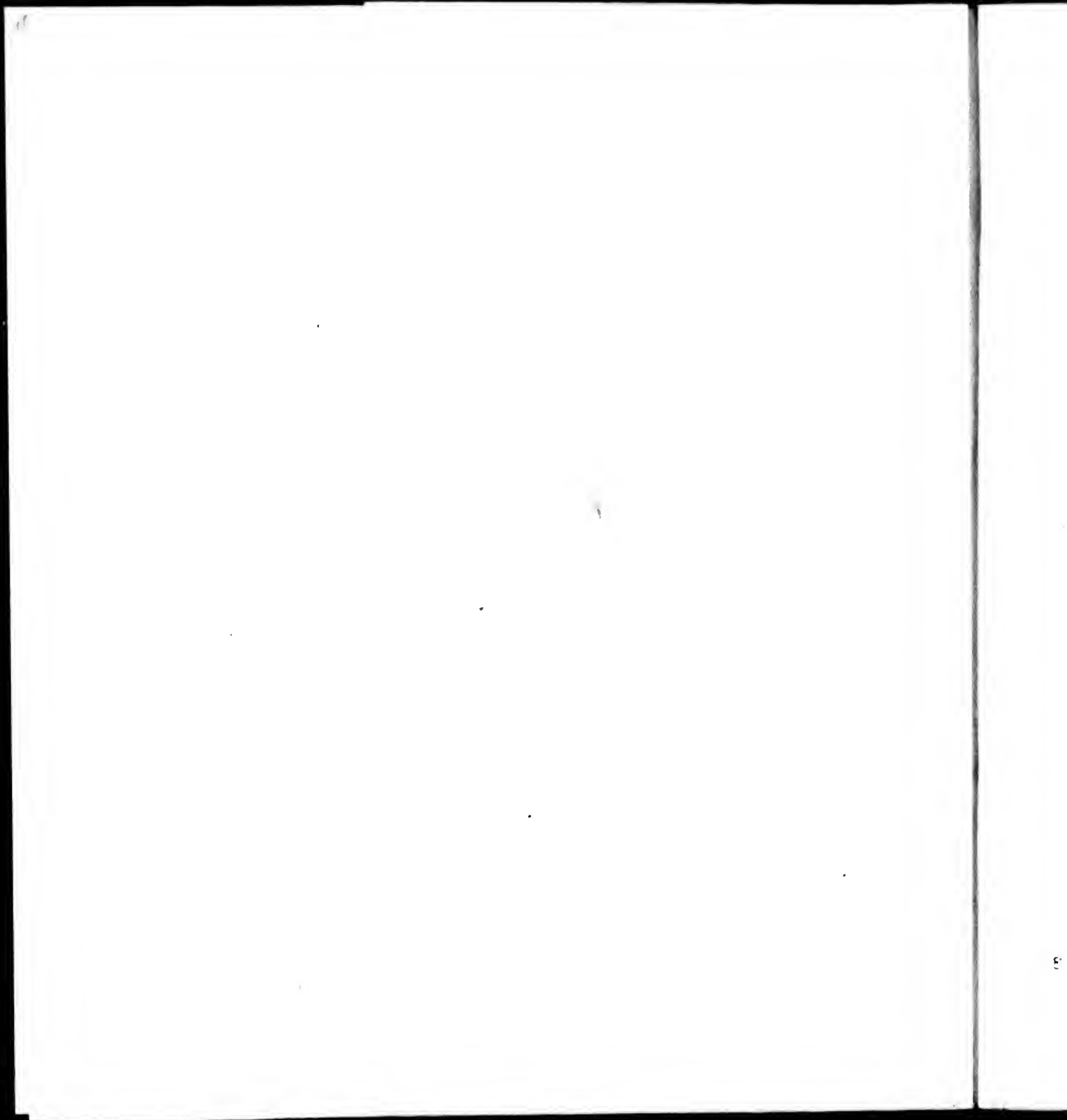
Members of Church of Eng- land.
56
34
107
50
48
22
12
16
—
12
143
140
129
20
789

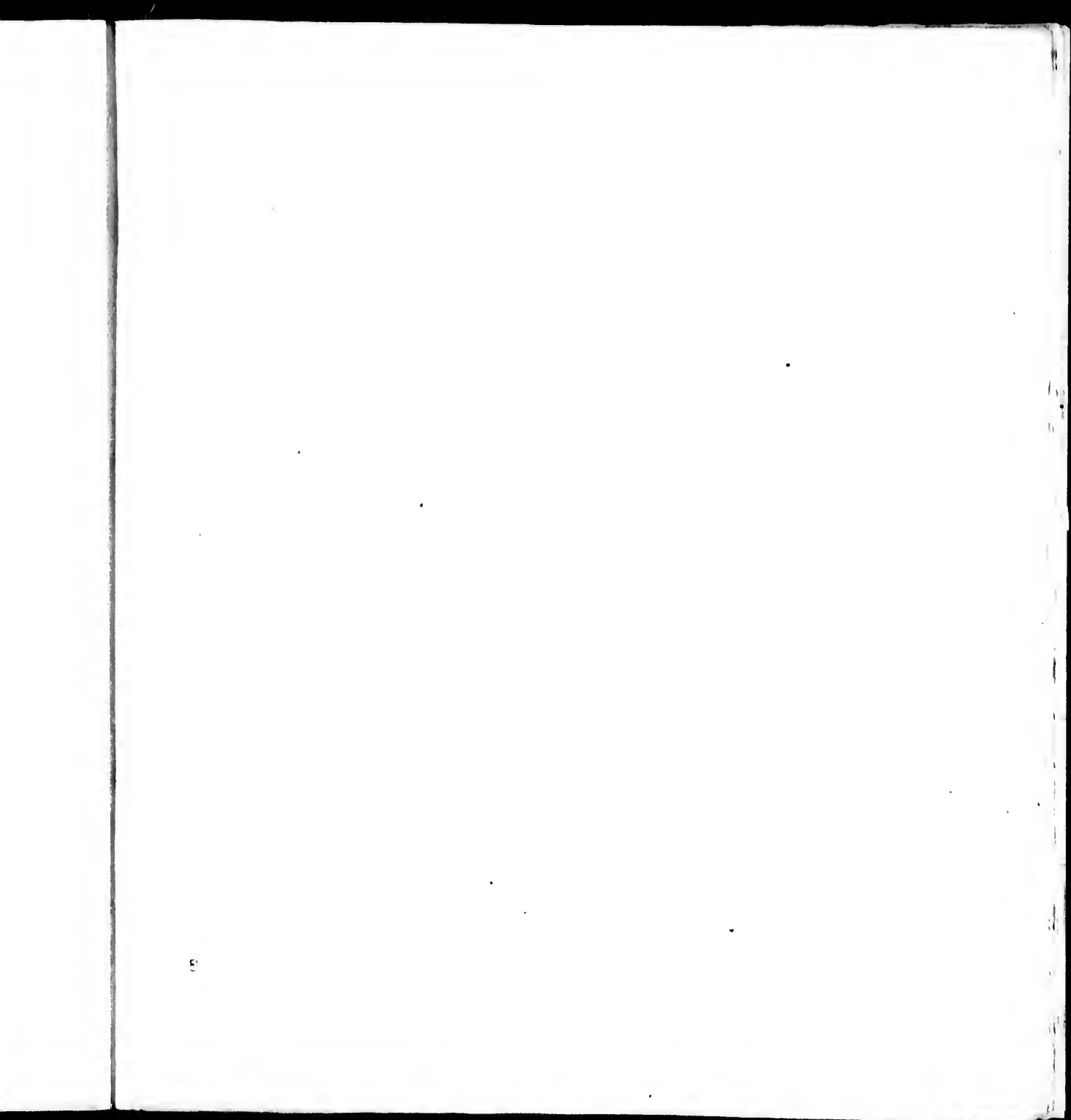
istrict

of Prince County.

Total number.	INDIANS.	
	Males.	Females.
595		
338	5	3
334		
351		
501		
325		
323		
404		
150		
132		
449		
265		
555	39	35
808		
321	52	42

Members of Church of Eng. land.	Free Church.	Kirk of Scotland.	Presbytery of P. E. I.	Roman Catholics.	Methodists.	Baptists.	Bible Christians.	Quakers.	Jews.	Universalists.	Mormons.	Unitarians.	Other denominations.	Religious profession not stated.	NATIVES OF							Country not stated.	Total number of Males.	Total number of Females.	Total number of Inhabitants.					
															England.	Scotland.	Ireland.	British Colonies.	P. E. Island.	Other countries.										
56	7	16	16	1492	6	1										5	16	103	91	1386							825	778	1603	
44	6		18	569												5	5	33	18	550							347	291	638	
107	9		179	307	16	10									16	15	14	41	49	512							330	304	634	
50	12		324	147											11	11	11	50	346								252	211	463	
42	3		109	390	1	6	33								31	4	25	23	485								310	291	601	
125	5		35	145			12								11	2	6	12	186								116	109	225	
123	3		67	173	63	3	111								22	3	32	27	332								178	235	423	
16		10	93	137	41	6	89				4				14	43	12	20	355								217	187	404	
12			31	119			44								2	7	0	4	135								80	70	150	
142			73	207	14	9									9	1	3	3	99								69	63	132	
140			84	207											15	4	65	3	340								226	214	440	
129	8		213	193	35		34								32	1	2	4	210								132	133	265	
20			131	652	1		39								74	9	19	10	413								317	312	629	
															1				711									421	387	808
789	18	50	1273	4624	185	17	373				4			21	28	256	161	355	341	6077	16	209	3830	3585	7415					





First Electoral District

NUMBER OF TOWNSHIPS.	NUMBER OF ACRES HELD					No. of acres of arable land.	CROPS RAISED IN 1854.							
	In fee simple.	Under lease.	By written demise.	By verbal agreement.	By occupants who are neither freeholders nor tenants.		Bushels of WHEAT.	Bushels of BARLEY.	Bushels of OATS.	Bush. of RICKWHEAT.	Bushels of POTATOES.	Bushels of TURNIPS.	Hrs. of CLOVERSEED.	Tons of HAY.
No. 1,	278	14586	780	113	3220	5107	14855	1072	7384	—	69,011	3348	—	505
No. 2,	260	4233	185	800	—	2316	4118	577	1594	—	14,860	1867	—	170
No. 3,	4040½	1917	170	290	4007	2295	5263	1035½	4407	162	18,664	7275	13	257½
No. 4,	—	3637	—	265	597	1455	2680	455	2678	—	9,730	6027	13	158½
No. 5,	32½	3428	634	217	—	4918	3791	427	3630	—	10,523	3274	—	88½
No. 6,	—	1561	895	340	172	1149	1225	385½	2216	9½	4,366	387½	—	48
No. 7,	3290	2206	—	93	100	1729	4503	722	5934	119	7,485	2642	—	272½
No. 8,	200	118	—	—	2297	1216½	2248	296½	4114	32	6,367	1649	5	176½
No. 9,	60	1096	223	268	215	534	632	228	721	7	1,493	292	1	60½
No. 10,	—	1180	400	—	—	314	482	107	1072	—	2,860	810	23	64
No. 11,	685	5168	683	1161	564	2297	3543	424	4205	40½	15,430	4130	70	122
No. 12,	1148	1470	—	280	250	1045	1593	105	1872	—	5,960	1519	—	101
No. 13, (includ'g Lennox Island)	10893	3954½	62	1108	50	3293	5209	424	9179	153½	23,249½	4718	31	327½
No. 14,	—	2001	344	257	306	2912	3675	773	8034	111	23,147	2017	55	321
Total,	20,887	46,555½	4376	5292	11,784	30,559½	53,877	7031½	57,040	637½	213,145½	41,245½	211	2,602½

No. of Threshing Machines.
1
2
3
4
5
6
7
8
9
10
11
12
13
14
15
16
17
18
19
20
21
22
23
24
25
26
27
28
29
30
31
32
33
34
35
36
37
38
39
40
41
42

Second Electoral District

NUMBER OF TOWNSHIPS.	MALES.						FEMALES.						INDIANS.								
	Under 5 years.	From 5 to 16.	From 16 to 21.	From 21 to 45.	From 45 to 60.	Upwards of 60.	Under 5 years.	From 5 to 16.	From 16 to 21.	From 21 to 45.	From 45 to 60.	Upwards of 60.	Ages not stated.	Deaf and Dumb.	Blind.	Insane.	Married.	Single.	Total number.	Males.	Females.
	No. 15, - - - - -	97	155	52	176	39	24	94	152	63	166	37	21	-	-	-	-	-	-	-	-
No. 16, - - - - -	72	139	62	103	46	26	45	93	76	77	45	13	-	-	-	-	-	-	-	-	-
No. 17, - - - - -	146	242	78	228	58	30	137	227	81	228	65	19	-	1	1	12	442	1067	1509	1	1
No. 18, - - - - -	77	157	46	127	38	42	81	127	69	152	43	25	-	-	-	-	282	702	984	-	-
Total, - - - - -	392	663	238	634	181	122	357	599	289	623	190	78	-	4	2	9	1269	3098	4367	1	1

Members of Church of Eng. land.	From Church.
25	-
86	-
490	-
122	-
723	-

istrict

of Prince County.

Total number.	INDIANS.	
	Males.	Females.
76	—	—
98	—	—
09	1	1
84	—	—
67	1	1

Members of Church of Eng-land.	MEMBERS OF CHURCHES.										NATIVES OF						Country not stated.	Total number of Males.	Total number of Females.	Total number of Inhabitants.				
	Free Church.	Kirk of Scotland.	Presbytery of P. E. I.	Roman Catholics.	Methodists.	Baptists.	Bible Christians.	Quakers.	Jews.	Universalists.	Mormons.	Unitarians.	Other denominations.	Religious profession not stated.	England.	Scotland.					Ireland.	British Colonies.	P. E. Island.	Other countries.
23	—	4	—	959	36	3	10	—	—	—	—	—	—	32	6	2	6	16	1014	—	32	543	533	1076
86	—	—	—	380	1	21	11	—	—	1	—	—	—	15	34	35	45	5	644	—	35	448	350	798
490	3	10	—	304	77	66	—	—	—	—	—	—	—	6	99	22	39	61	1254	—	10	753	758	1511
122	19	—	—	420	10	1	—	—	—	—	—	—	—	1	19	54	50	34	826	—	1	487	497	984
723	22	38	984	2265	124	91	21	—	—	1	—	2	38	60	158	129	140	116	3738	10	78	2231	2138	4369

Second Electoral District

NUMBER OF TOWNSHIPS.	NUMBER OF ACRES HELD					No. of acres of arable land.	CROPS RAISED IN 1854.							
	In fee simple.	Under lease.	By written demises.	By verbal agreement.	By occupants who are neither freeholders nor tenants.		Bushels of WHEAT.	Bushels of BARLEY.	Bushels of OATS.	Bush. of BUCKWHEAT.	Bushels of POTATOES.	Bushels of TURNIPS.	lbs. of CLOVERSEED.	Tons of HAY.
No. 15,	11,288	—	992	1148	—	3,551	7,294	2349	9,086	124	19,802	5,686	129	415½
No. 16,	1,706	4,383	100	320	100	3,802	4,603	1195	12,224	239	17,526	7,714	—	464
No. 17,	18,688	3,321	—	341	—	7,369½	11,349	2288	26,613	974	24,856	22,037	32	710
No. 18,	8,276	5,978	142	1375	—	7,458	8,576	1269	27,291	202	28,741	7,070	—	553
Total,	39,958	13,682	1234	1946	100	22,180½	31,822	7101	75,218	1543	90,925	42,507	161	2142½

No. of Threshing Machines.

9
19
20
16
64

istrict

of Prince County.

lbs. of Cloverseed.	Tons of Hay.
129	415
—	464
32	710
—	553
161	2142

No. of Threshing Machines.	Horses.	Neat Cattle.	Sheep.	Hogs.	Number of Churches.	School-houses.	Brewing and Distilling Establishments.	Tanneries.	Tobacco Manufactories.	Fishing Establishments.	NUMBER OF MILLS.			
											Grist Mills.	Carding Mills.	Saw Mills.	Fulling and Dressing Mills.
0	206	774	1206	415	12	4	—	—	—	—	1	—	—	—
19	171	686	1233	490	5	4	—	—	—	—	—	—	—	—
20	327	1012	1625	617	5	4	—	—	—	1	—	—	—	—
16	254	943	1725	583	1	5	—	—	—	—	—	—	—	—
04	958	3415	5789	2105	11	20	2	3	—	1	10	2	6	—

Third Electoral District

NUMBER OF TOWNSHIPS.	MALES.						FEMALES.						INDIANS.									
	Under 5 years.	From 5 to 16.	From 16 to 21.	From 21 to 45.	From 45 to 60.	Upwards of 60.	Under 5 years.	From 5 to 16.	From 16 to 21.	From 21 to 45.	From 45 to 60.	Upwards of 60.	Ages not stated.	Deaf and Dumb.	Blind.	Insane.	Married.	Single.	Total number.	Males.	Females.	
No. 19,	98	221	77	193	53	43	107	178	82	186	67	30	—	—	—	—	—	—	—	—	—	—
No. 25,	108	36	111	26	19	73	94	45	122	31	15	—	—	—	—	—	—	—	—	—	—	—
No. 26,	138	46	113	37	21	84	128	52	120	39	21	—	—	—	—	—	—	—	—	—	—	—
No. 27,	179	58	118	62	39	99	175	75	131	51	15	—	—	—	—	—	—	—	—	—	—	—
No. 28,	113	220	71	175	50	44	116	187	79	173	48	27	—	—	—	—	—	—	—	—	—	—
Total,	439	866	288	710	228	166	479	762	333	732	236	108	—	1	1	3	1483	3864	5347	9	7	

Members of Church of Eng- land.
207
42
6
24
58
337

istrict

of Prince County.

Total number.	INDIANS.	
	Males.	Females.
335	5	12
77	4	5
086	—	—
303	—	—
317	9	7

Members of Church of Eng-land.	NATIVES OF										Country not stated.	Total number of Males.	Total number of Females.	Total number of Inhabitants.											
	Free Church.	Kirk of Scotland.	Presbytery of P. E. I.	Roman Catholics.	Methodists.	Baptists.	Bible Christians.	Quakers.	Jews.	Universalists.					Mormons.	Unitarians.	Other denominations.	Religious profession not stated.	England.	Scotland.	Ireland.	British Colonies.	P. E. Island.	Other countries.	
207	3	79	320	532	145	3	30	—	—	—	—	—	—	11	80	84	90	32	1043	2	—	690	652	1342	
42	—	53	298	122	126	97	—	—	—	12	—	—	—	—	32	77	43	16	579	5	—	372	380	752	
6	6	32	185	340	200	111	—	—	—	—	—	—	—	—	16	12	160	28	642	13	—	437	449	886	
24	—	130	23	632	243	26	—	—	—	—	—	—	—	—	14	24	273	34	699	4	—	534	546	1080	
58	21	290	64	119	574	164	—	—	—	6	—	—	—	5	52	36	44	39	1110	3	—	673	630	1303	
317	30	581	890	1745	1288	401	45	1	—	12	1	—	—	10	13	194	233	610	149	4073	27	—	2706	2657	5363

Third Electoral District

NUMBER OF TOWNSHIPS.	NUMBER OF ACRES HELD					No. of acres of arable land.	CROPS RAISED IN 1854.							
	In fee simple.	Under lease.	By written demise.	By verbal agreement.	By occupants who are neither freeholders nor tenants.		Bushels of WHEAT	Bushels of BARLEY.	Bushels of OATS.	Bushels of BUCKWHEAT.	Bushels of POTATOES.	Bushels of TURNIPS.	lbs. of CLOVERSEED.	Tons of HAY.
No. 19,	4,525	12,282	245	201	227	8,100	10,590	1,000	35,855	652	35,320	17,690	266	512
No. 23,	10,765	7,893	1,865	695	250	6,497	6,196	414	35,587	1029	28,242	13,164	108	420
No. 26,	5,497	7,591	752	416	150	13,734	6,733	774	31,362	1111	21,195	26,269	—	974
No. 27,	5,706	8,300	300	373	1020	5,731	4,705	1,212	37,395	2129	23,760	9,760	62	443
No. 28,	9,243	10,546	—	12	100	8,147	7,130	4,402	55,410	3890	31,248	42,043	2587	1373
Total,	35,736	39,612	3162	1717	1747	12,209	35,354	7,802	195,609	8811	140,065	108,926	2963	3722

No. of Threshing Machines.

13
17
24
13
53
125

istrict

lbs. of CLOVERSEED.	Tons of HAY.
206	512
108	420
62	974
2587	1873
2963	3722

of Prince County.

No. of Threshing Machines.	Horses.	Neat Cattle.	Sheep.	Hogs.	Number of Churches.	School-houses.	Brewing and Distilling Establishments.	Tanneries.	Tobacco Manufactories.	Fishing Establishments.	NUMBER OF MILLS.			
											Grist Mills.	Carding Mills.	Saw Mills.	Fulling and Dressing Mills.
18	336	1189	2054	813	1	5	12	3	1	1	5	12	62	1
17	311	892	1474	411	12	5	1	1	1	1	4	12	4	1
24	304	1037	2316	187	12	3	1	1	1	1	4	1	4	1
13	263	1498	1702	413	12	3	1	1	1	1	4	1	4	1
53	391	1423	3004	519	12	3	1	1	1	1	1	1	3	1
125	1605	6039	10,550	2643	10	18	2	4	1	1	13	4	16	12

istrict

Total number.	INDIANS.	
	Males.	Females.
1339		
993		
369		
753		
183		
991		
502		
974		
104	16	17

of Queen's County.

	Members of Church of Eng- land.	Free Church.	Kirk of Scotland.	Presbytery of P. E. I.	Roman Catholics.	Methodists.	Baptists.	Bible Christians.	Quakers.	Jews.	Universalists.	Mormons.	Unitarians.	Other denominations.	Religious profession not stated.	NATIVES OF						Country not stated.	Total number of Males.	Total number of Females.	Total number of Inhabitants.	
																England.	Scotland.	Ireland.	British Colonies.	P. E. Island.	Other countries.					
1299	1091	1115	1111	3334	557	444	166									169	575	1336	576	173	8286	19	172	5630	5507	11137
	121	92	339	216	110	18	65									21	23	264	55	11	598		23	504	470	974
	147	50	339	216	110	18	65									21	23	264	55	11	598		23	504	470	974
	161	47	339	216	110	18	65									21	23	264	55	11	598		23	504	470	974
	164	47	339	216	110	18	65									21	23	264	55	11	598		23	504	470	974
	164	47	339	216	110	18	65									21	23	264	55	11	598		23	504	470	974
	164	47	339	216	110	18	65									21	23	264	55	11	598		23	504	470	974
	164	47	339	216	110	18	65									21	23	264	55	11	598		23	504	470	974
	164	47	339	216	110	18	65									21	23	264	55	11	598		23	504	470	974
	164	47	339	216	110	18	65									21	23	264	55	11	598		23	504	470	974
	164	47	339	216	110	18	65									21	23	264	55	11	598		23	504	470	974
	164	47	339	216	110	18	65									21	23	264	55	11	598		23	504	470	974
	164	47	339	216	110	18	65									21	23	264	55	11	598		23	504	470	974
	164	47	339	216	110	18	65									21	23	264	55	11	598		23	504	470	974
	164	47	339	216	110	18	65									21	23	264	55	11	598		23	504	470	974
	164	47	339	216	110	18	65									21	23	264	55	11	598		23	504	470	974
	164	47	339	216	110	18	65									21	23	264	55	11	598		23	504	470	974
	164	47	339	216	110	18	65									21	23	264	55	11	598		23	504	470	974
	164	47	339	216	110	18	65									21	23	264	55	11	598		23	504	470	974
	164	47	339	216	110	18	65									21	23	264	55	11	598		23	504	470	974
	164	47	339	216	110	18	65									21	23	264	55	11	598		23	504	470	974
	164	47	339	216	110	18	65									21	23	264	55	11	598		23	504	470	974
	164	47	339	216	110	18	65									21	23	264	55	11	598		23	504	470	974
	164	47	339	216	110	18	65									21	23	264	55	11	598		23	504	470	974
	164	47	339	216	110	18	65									21	23	264	55	11	598		23	504	470	974
	164	47	339	216	110	18	65									21	23	264	55	11	598		23	504	470	974
	164	47	339	216	110	18	65									21	23	264	55	11	598		23	504	470	974
	164	47	339	216	110	18	65									21	23	264	55	11	598		23	504	470	974
	164	47	339	216	110	18	65									21	23	264	55	11	598		23	504	470	974
	164	47	339	216	110	18	65									21	23	264	55	11	598		23	504	470	974
	164	47	339	216	110	18	65									21	23	264	55	11	598		23	504	470	974
	164	47	339	216	110	18	65									21	23	264	55	11	598		23	504	470	974
	164	47	339	216	110	18	65									21	23	264	55	11	598		23	504	470	974
	164	47	339	216	110	18	65									21	23	264	55	11	598		23	504	470	974
	164	47	339	216	110	18	65									21	23	264	55	11	598		23	504	470	974
	164	47	339	216	110	18	65									21	23	264	55	11	598		23	504	470	974
	164	47	339	216	110	18	65									21	23	264	55	11	598		23	504	470	974
	164	47	339	216	110	18	65									21	23	264	55	11	598		23	504	470	974
	164	47	339	216	110	18	65									21	23	264	55	11	598		23	504	470	974
	164	47	339	216	110	18	65									21	23	264	55	11	598		23	504	470	974
	164	47	339	216	110	18	65									21	23	264	55	11	598		23	504	470	974
	164	47	339	216	110	18	65									21	23	264	55	11	598		23	504	470	974
	164	47	339	216	110	18	65									21	23	264	55	11	598		23	504	470	974
	164	47	339	216	110	18	65									21	23	264	55	11	598		23	504	470	974
	164	47	339	216	110	18	65									21	23	264	55	11	598		23	504	470	974
	164	47	339	216	110	18	65									21	23	264	55	11	598		23	504	470	974
	164	47	339	216	110	18	65									21	23	264	55	11	598		23	504	470	974
	164	47	339	216	110	18	65									21	23	264	55	11	598		23	504	470	974
	164	47	339	216	110	18	65									21	23	264	55	11	598		23	504	470	974
	164	47	339	216	110	18	65									21	23	264	55	11	598		23	504	470	974
	164	47	339	216	110	18	65									21	23	264	55	11	598		23	504	470	974
	164	47	339	216	110	18	65									21	23	264	55	11	598		23	504	470	974
	164	47	339	216	110	18	65									21	23	264	55	11	598		23	504	470	974
	164	47	339	216	110	18	65									21	23	264	55	11	598		23	504	470	974
	164	47	339	216	110	18	65									21	23	264	55	11	598		23	504	470	974
	164	47	339	216	110	18	65									21	23	264	55	11	598		23	504	470	974
	164	47	339	216	110	18	65									21	23	264	55	11	598		23	504	470	974
	164	47	339	216	110	18	65									21	23	264	55	11	598		23	504	470	974
	164	47	339	216	110	18	65									21	23	264	55	11	598		23	504	470	974
	164	47	339	216	110	18	65									21	23	264	55	11	598		23	504	470	974
	164	47	339	216	110	18	65									21	23	264	55	11	598		23	504	470	974
	164	47	339	216	110	18	65									21	23	264	55	11	598		23	504	470	974
	164	47	339	216	110	18	65									21	23	264	55	11	598		23	504	470	974
	164	47	339	216	110	18	65									21	23	264	55	11	598		23	504	470	974
	164	47	339	216	110	18	65									21	23	264	55	11	598		23	504	470	974
	164	47	339	216	110	18	65									21	23	264	55	11	598		23	504	470	974
	164	47	339	216	110	18	65									21	23	264	55	11	598		23	504	470	974
	164																									

First Electoral District

NUMBER OF TOWNSHIPS.	NUMBER OF ACRES HELD					No. of acres of arable land.	CROPS RAISED IN 1854.							
	In fee simple.	Under lease.	By written demise.	By verbal agreement.	By occupants who are neither freeholders nor tenants.		Bushels of WHEAT.	Bushels of BARLEY.	Bushels of OATS.	Bush. of BECKWHEAT.	Bushels of POTATOES.	Bushels of TURNIPS.	lbs. of CLOVERSEED.	Tons of HAY.
No. 20,	2,579	11,401	590	282	154	5,358	9,016	1,217	29,027	396	31,873	9,879	213	506
No. 21,	3,722	9,207	100	744	36	4,556	7,899	1,317	23,784	194	31,374	12,629	93	442
No. 22,	1,552	14,028	305	660	—	3,812	7,965	840	25,635	86	33,505	6,670	—	540
No. 23,	3,883	12,079	1,183	386	50	7,286	17,118	1,521	33,167	114	48,994	29,788	85	789
No. 24, and Peter's Island,	5,358	8,876	2,181	2,768	—	8,246	18,851	4,727	40,342	107	55,411	35,304	227	926
No. 33,	7,013	10,408	101	15	—	9,174	7,115	3,853	39,233	508	36,020	41,412	497	1,242
No. 34,	4,529	15,584	50	—	—	14,642	6,874	4,704	67,235	440	69,950	45,163	82	948
No. 67,	9,517	4,892	650	675	150	4,126	4,061	685	24,407	581	20,737	14,320	290	356
Total,	38,153	86,475	5,160	5,536	390	57,250	78,899	18,921	282,870	2,426	327,864	195,165	1,487	5,740

No. of Threshing Machines.

19
15
11
25
29
47
41
4

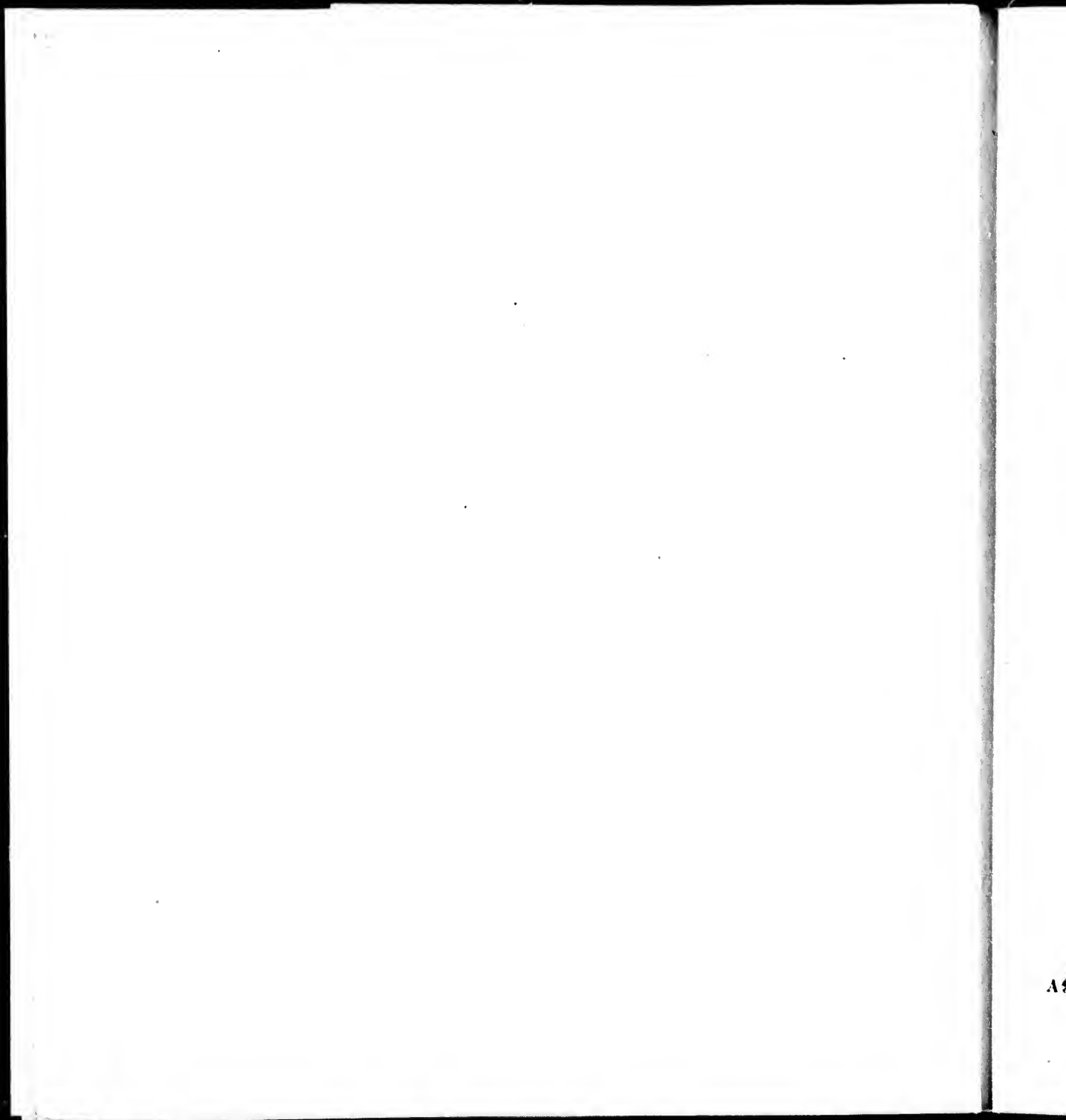
191

District

of Queen's County.

	Lbs. of CLOVERSEED.	Tons of HAY.
79	213	506
29	93	442
79		540
82	85	789
04	227	926
12	497	1,242
63	82	948
20	290	356
65	1,487	5,749

No. of Threshing Machines.	Horses.	Neat Cattle.	Sheep.	Hogs.	Number of Churches.	School-houses.	Brewing and Distilling Establishments.	Tanneries.	Tobacco Manufactories.	Fishing Establishments.	NUMBER OF MILLS.				
											Grist Mills.	Carding Mills.	Saw Mills.	Fulling and Dressing Mills.	
19	271	834	1,579	528	12	5	1	—	—	—	—	—	—	—	—
15	218	862	1,445	532	4	3	1	—	—	—	—	—	—	—	—
11	257	1,023	1,897	579	12	9	—	—	—	—	—	—	—	—	—
25	353	1,593	2,861	671	5	6	—	—	—	—	—	—	—	—	—
29	488	1,736	3,146	1,075	12	10	—	—	—	—	—	—	—	—	—
47	408	1,583	3,125	692	12	8	—	—	—	—	—	—	—	—	—
41	506	1,564	3,483	852	7	3	—	—	—	—	—	—	—	—	—
4	193	1,089	817	449	3	3	—	—	—	—	—	—	—	—	—
191	2,694	10,288	18,353	4,378	28	47	7	7	—	3	20	6	17	—	—



Second Electoral District

NUMBER OF TOWNSHIPS.	NUMBER OF ACRES HELD					CROPS RAISED IN 1854.								
	In fee simple.	Under lease.	By written demise.	By verbal agreement.	By occupants who are neither freeholders nor tenants.	No. of acres of arable land	Bushels of WHEAT	Bushels of BARLEY.	Bushels of OATS.	Bush. of RYE GRASS.	Bushels of POTATOES.	Bushels of TURNIPS.	lbs. of CLOVERSEED.	Tons of HAY.
No. 29,	150	1,452	152	1,944		7,373	5,544	3,358	43,835	3721	31,350	14,728	—	823
No. 30,	3,307	5,737	450	50	3	5,110	1,827	1,762	15,440	270	17,069	6,386	—	227
No. 31,	7,157	6,592	—	394	—	4,588	3,870	1,552	24,228	—	35,059	10,912	15	897
No. 32,	6,231	7,086	—	—	—	6,930	4,629	4,773	29,975	788	32,486	25,729	35	1,086
No. 33,	779	10,779	680	476	616	9,475	3,085	1,941	26,600	—	32,331	9,566	10	324
No. 34,	300	9,943	—	962	2,169	2,844	4,327	665	14,337	3	28,748	3,345	186	123
No. 37,	9,492	5,219	10	360	650	9,929	4,795	1,436	14,374	37	31,525	5,049	30	789
No. 48,	3,438	11,728	—	184	—	5,550	6,500	2,175	34,498	352	41,935	29,709	—	731
No. 65,	4,287	12,566	627	—	—	6,160	7,222	3,697	31,351	455	54,438	29,733	6	743
Total,	35,141	71,102	1,919	4,310	7,410	57,959	41,699	21,369	234,641	6,478	304,941	165,157	510	5,743

No. of Threshing Machines. 74

District

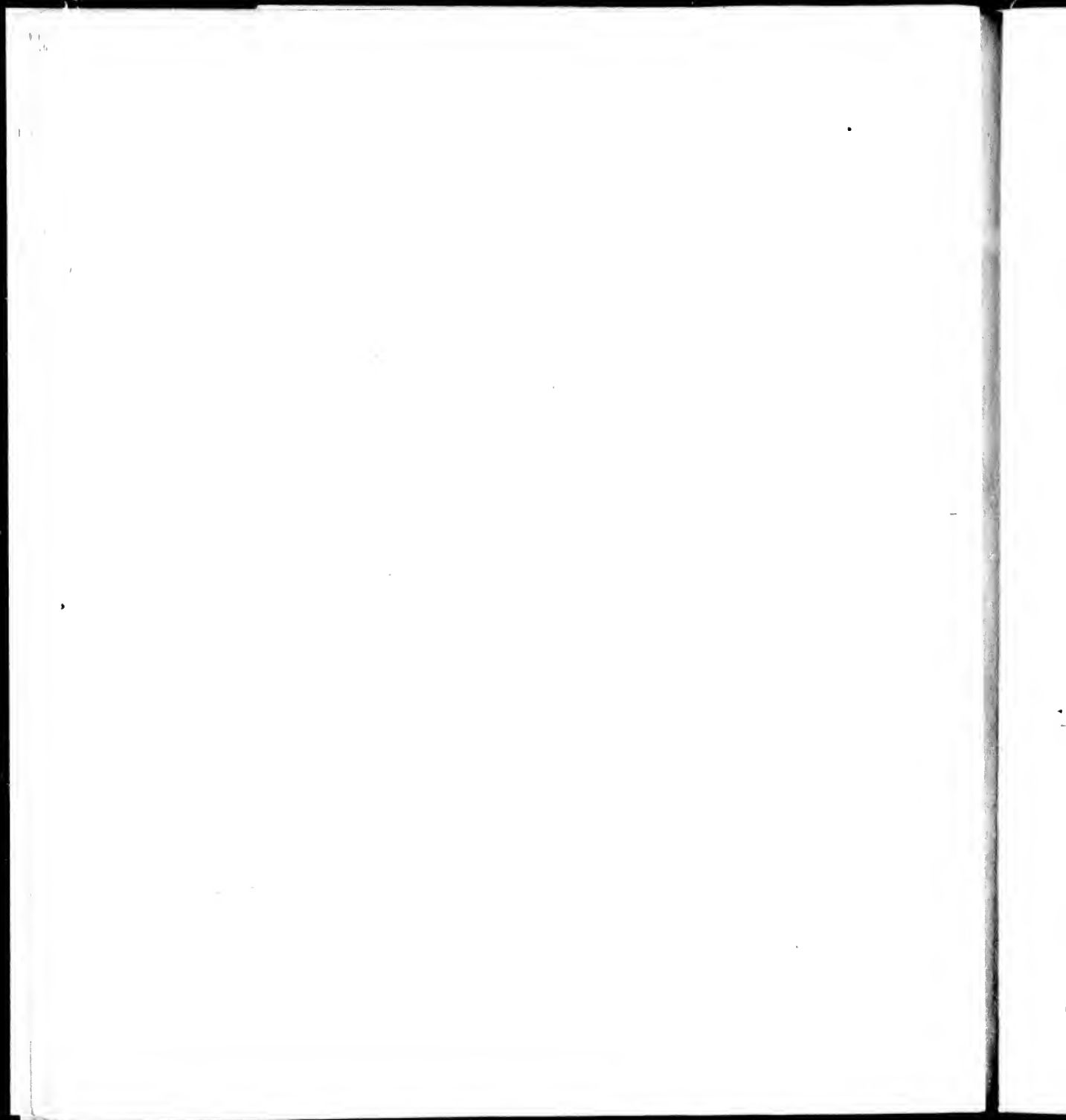
of Queen's County.

	lbs. of CLOVERSEED.	Tons of HAY.	No. of Threshing Machines.	Horses.	Neat Cattle.	Sheep.	Hogs.	Number of Churches.	School-houses.	Brewing and Distilling Establishments.	Tanneries.	Tobacco Manufactories.	Fishing Establishments.	NUMBER OF MILLS.				
														Grist Mills.	Carding Mills.	Saw Mills.	Fulling and Dressing Mills.	
57	510	5,743	26	379	1,274	2,296	723	12	6									
			113	551	551	332	504											
			288	1,122	1,122	1,951	814											
			330	1,067	1,067	2,045	474	3	6									
			257	920	920	1,527	599	1	4									
			297	786	786	1,135	600	1	3									
			215	578	578	1,185	545	1	3									
			396	1,098	1,098	2,020	583	3	4									
			32	901	901	2,513	770	3										
74	2,423	8,598	16,207	5,612	15	42								18	6	27		

Third Electoral District

NUMBER OF TOWNSHIPS.	MALES.					FEMALES.					SEXES.		INDIANS.								
	Under 5 years.	From 5 to 16.	From 16 to 21.	From 21 to 45.	From 45 to 60.	Upwards of 60.	Under 5 years.	From 5 to 16.	From 16 to 21.	From 21 to 45.	From 45 to 60.	Upwards of 60.	Ages not stated.	Deaf and Dumb.	Blind.	Insane.	Married.	Single.	Total number.	Males.	Females.
No. 49,	112	236	77	203	69	52	139	208	97	1216	67								1521		
No. 50,	123	230	70	211	55	41	125	190	122	247	50								1454		
No. 57,	179	297	115	246	108	70	159	283	132	280	85								1998		
No. 58,	37	180	65	153	57	37	99	170	89	163	49								1192		
No. 60,	53	116	45	108	33	9	29	58	50	70	19								661		
No. 62,	86	135	54	119	39	17	111	132	55	126	36								925		
Total,	643	1191	427	1043	361	217	666	1011	491	1102	314	189	—	12	1	10	2111	5577	7691	6	5

Members of Church of Eng-land.	Pres. Church.
157	122
16	
1	3
1	5
218	5



Third Electoral District

of

NUMBER OF TOWNSHIPS.	NUMBER OF ACRES HELD					No. of acres of arable land.	CROPS RAISED IN 1854.							
	In fee simple.	Under lease.	By written demises.	By verbal agreement.	By occupants who are neither freeholders nor tenants.		Bushels of WHEAT.	Bushels of BARLEY.	Bushels of OATS.	Bush. of BUCKWHEAT.	Bushels of POTATOES.	Bushels of TUPPERS.	lbs. of CLOVERED.	Tons of HAY.
No. 49,	6,309	6,989	1,360	1,023	25	14,159	7,233	1,834	63,538	59	43,075	13,083	—	1,032
No. 50,	6,660	6,046	2,258	777	12	6,300	5,455	2,759	43,313	21	36,697	7,914	33	1,017
No. 57,	9,680	7,075	435	229	—	7,144	10,232	928	36,435	—	3,533	6,316	44	815
No. 58,	6,342	4,894	815	715	175	4,310	4,141	182	20,925	—	27,301	3,152	5	329
No. 60,	4,038	3,643	—	—	—	2,460	2,918	4	10,444	—	11,489	1,301	—	150
No. 62,	2,632	4,160	—	3,428	225	3,117	4,931	327	14,917	10	21,737	1,462	20	283
Total,	35,661	33,747	4,869	6,163	437	38,240	34,940	6,034	189,002	90	143,832	33,228	102	3,626

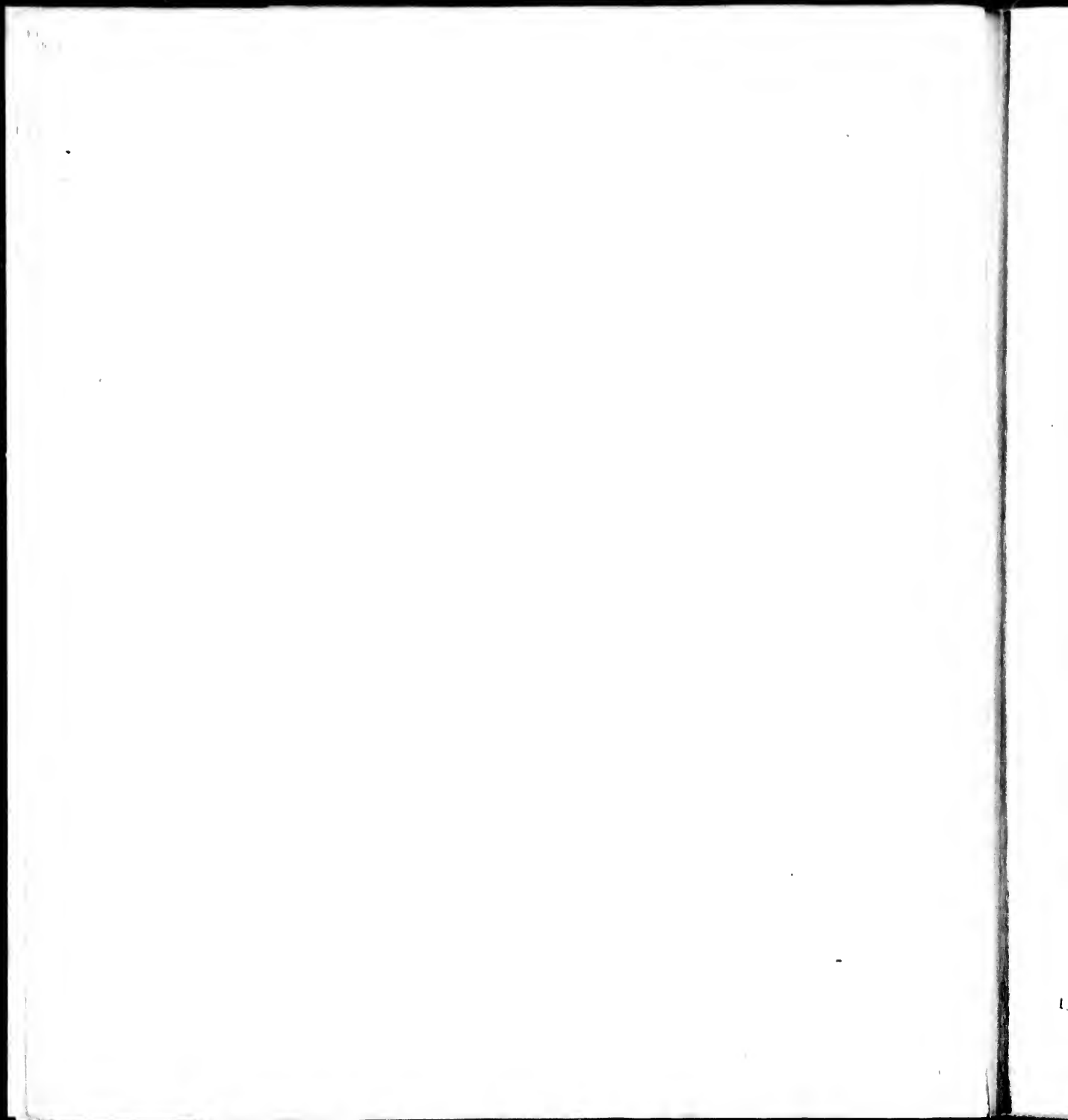
No. of Threshing Machines.
12
7
17
1
1
3
41

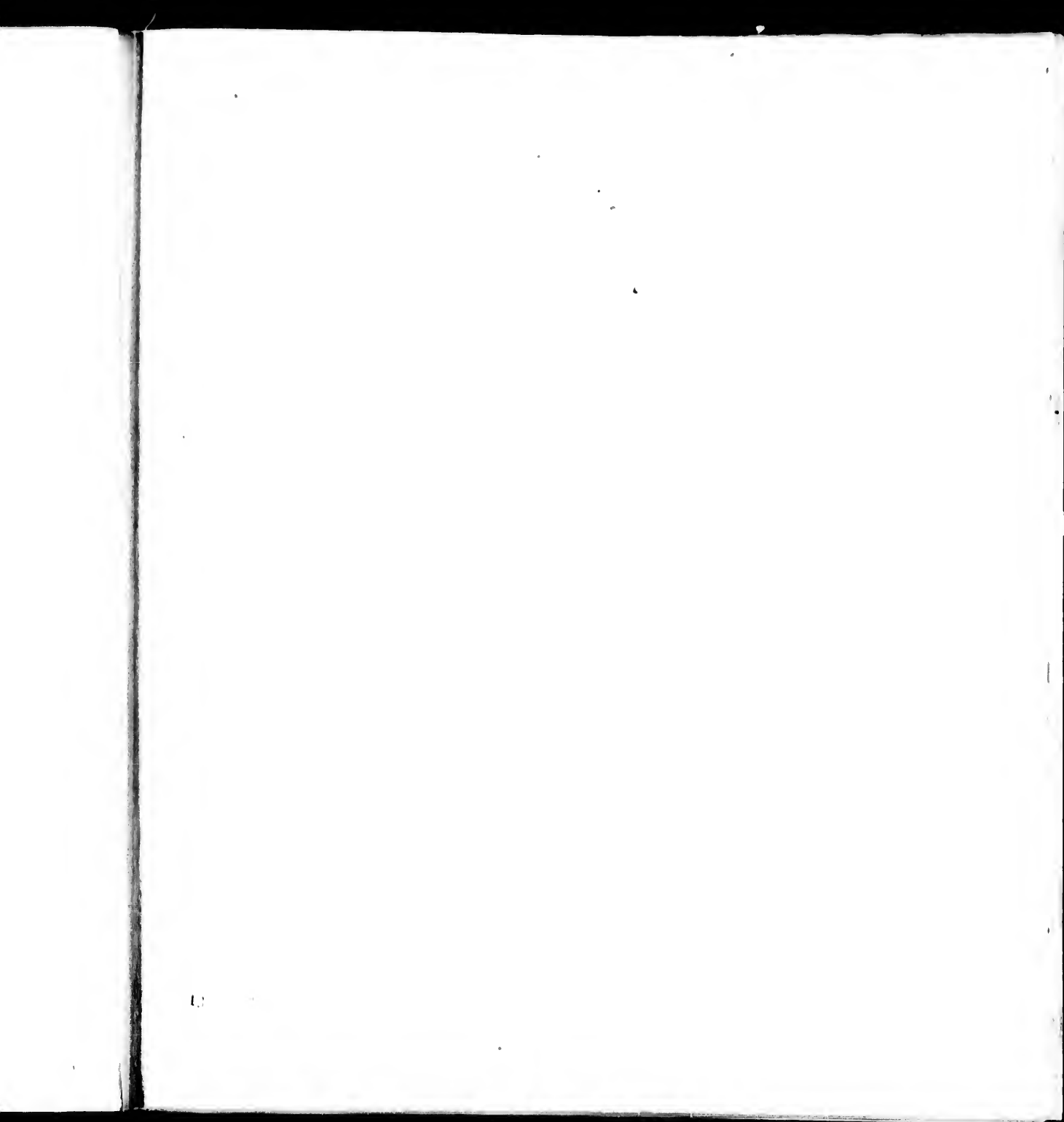
District

of Queen's County.

	lbs. of CLOVERSEED.	Tons of HAY.
083	1	1,082
914	33	1,017
316	44	815
152	5	329
301	1	150
462	20	283
228	102	3,626

No. of Threshing Machines.	Horses.	Neat Cattle.	Sheep.	Hogs.	Number of Churches.	School-houses.	Brewing and Distilling Establishments.	Tanneries.	Tobacco Manufactories.	Fishing Establishments.	NUMBER OF MILLS.			
											Grist Mills.	Carding Mills.	Saw Mills.	Fulling and Dressing Mills.
12	337	1,315	2,672	220	3	1	—	1	—	—	3	—	5	—
17	495	1,427	2,574	224	3	7	—	—	—	—	3	—	3	—
17	415	1,537	3,217	304	3	6	—	—	—	—	5	—	3	—
1	167	759	1,255	493	—	4	—	—	—	—	1	—	1	—
1	94	326	848	236	1	3	—	—	—	—	1	—	1	—
3	139	684	1,311	373	—	3	—	—	—	—	2	—	4	—
41	1,118	6,148	11,877	3,620	12	27	—	2	—	—	15	6	16	—





First Electoral District

NUMBER OF TOWNSHIPS.	MALES.						FEMALES.						INDIANS.		
	Under 5 years.	From 5 to 16.	From 16 to 21.	From 21 to 45.	From 45 to 60.	Upwards of 60.	Under 5 years.	From 5 to 16.	From 16 to 21.	From 21 to 45.	From 45 to 60.	Upwards of 60.	Total number.	Males.	Females.
	Ages not stated.	Deaf and Dumb.	Blind.	Lunatic.	Married.	Single.	Total number.	Males.	Females.						
No. 43,	47	124	58	106	17	20	46	109	52	125	36	24	—	—	
No. 44,	68	154	79	145	51	21	56	134	87	154	39	13	—	—	
No. 45,	66	184	71	213	66	25	91	160	69	187	35	17	—	—	
No. 46,	58	96	32	92	31	14	43	101	48	109	21	10	—	—	
No. 47,	64	156	48	144	62	34	70	158	79	167	54	25	—	—	
Total,	304	714	288	700	257	114	306	662	335	742	205	89	—	—	

Members of Church of Eng- land.
24
26
13
1
3
67

District

of King's County.

	Total number.	INDIANS.	
		Males.	Females.
1	795		
1	1001		
1	1204		
1	655		
1	1061		
6	4716		

Members of Church of Eng- land.	INDIANS.		NATIVES OF										Country not stated.	Total number of Males.	Total number of Females.	Total number of Inhabitants.								
	Free Church.	Kirk of Scotland.	Presbytery of P. E. I.	Roman Catholics.	Methodists.	Baptists.	Bible Christians.	Quakers.	Jews.	Universalists.	Mormons.	Unitarians.					Other denominations.	Religious profession not stated.	England.	Scotland.	Ireland.	British Colonies.	P. E. Island.	Other countries.
24	12	21	270	174	12	1								6	5	15	19	161	595	12	1	403	392	795
25	12	23	15	935		6								12	5	112	16	97	37	34	20	518	483	1001
13	1	15	10	1150		6								12	1	112	15	97	37	34	20	625	579	1204
1	1	2	591											12	1	112	15	97	37	34	20	323	332	655
3		1	713											6	1	112	15	97	37	34	20	508	553	1061
67	11	65	330	3863	7	365								21	13	112	15	97	37	34	20	2377	2339	4716

First Electoral District

NUMBER OF TOWNSHIPS.	NUMBER OF ACRES HELD					No. of acres of arable land.	CROPS RAISED IN 1854.							
	In fee simple.	Under lease.	By written demise.	By verbal agreement.	By occupants who are neither freeholders nor tenants.		Bushels of WHEAT.	Bushels of BARLEY.	Bushels of OATS.	Bush. of RICKWHEAT.	Bushels of POTATOES.	Bushels of TURNIPS.	lbs. of CLOVERSEED.	Tons of HAY.
No. 43,	3,242	3,624	818	101	700	4,400	3,107	2,202	15,021	32	20,878	3,961	626	247
No. 44,	8,899	2,427	—	115	525	3,142	4,126	2,451	19,103	—	19,519	3,973	—	351
No. 45,	8,778	1,138	—	—	2,239	4,077	3,491	3,303	23,094	—	16,431	2,514	20	405
No. 46,	2,840	1,507	—	330	3,372	2,152	2,188	2,489	18,150	—	13,599	2,588	5	232
No. 47,	11,841	550	592	952	2,115	4,697	5,144	4,072	38,088	9	28,268	6,747	9	579
Total,	35,599	9,246	1,410	1,498	8,951	18,468	17,966	14,517	113,756	41	98,695	19,783	660	1,814

No. of Threshing Machines.

1
8
3
1
17

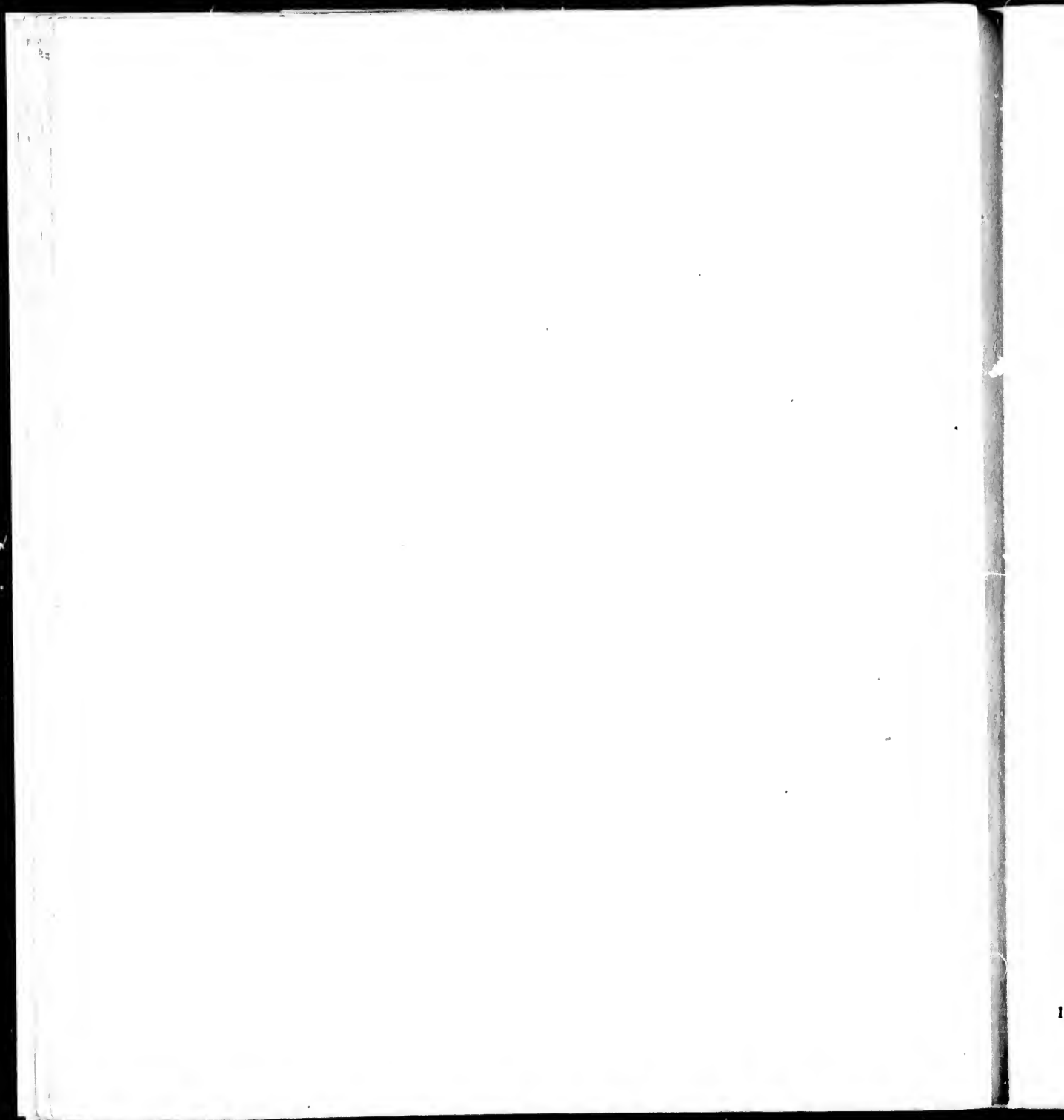
30

District

of King's County.

	lbs. of CLOVERSEED.	Tons of HAY.
61	626	247
73	—	351
14	20	405
88	5	232
47	9	579
83	660	1,814

No. of Threshing Machines.	Horses.	Neat Cattle.	Sheep.	Hogs.	Number of Churches.	School-houses.	Brewing and Distilling Estab- lishments.	Tanneries.	Tobacco Manufactories.	Fishing Establishments.	NUMBER OF MILLS.			
											Grist Mills.	Carding Mills.	Saw Mills.	Fulling and Dressing Mills.
1	169	662	844	451	2	1	—	—	—	1	1	3	1	—
8	178	677	1,041	494	2	4	—	—	—	6	2	1	3	—
3	233	321	1,621	615	1	4	—	—	—	8	1	—	1	1
1	129	549	1,055	443	—	4	—	—	—	4	—	—	—	—
17	309	1,322	2,192	878	3	5	—	—	—	4	3	—	2	—
30	1,018	4,031	6,736	2,882	8	18	—	—	—	23	9	4	7	1



Second Electoral District

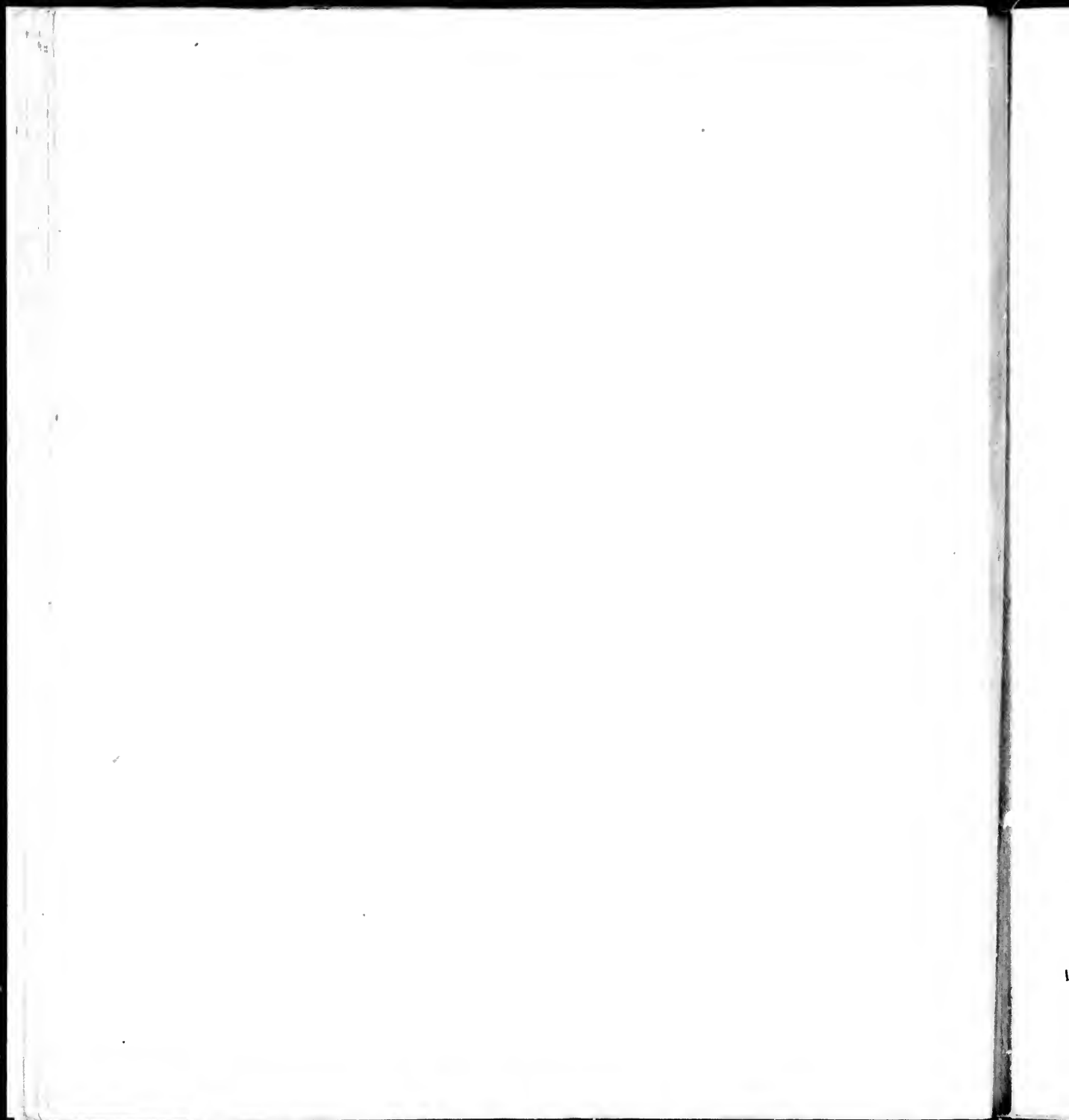
NUMBER OF TOWNSHIPS.	MALES.						FEMALES.						Ages not stated.	Deaf and Dumb.	Blind.	Insane.	Married.	Single.	Total number.	INDIANS.	
	Under 5 years.	From 5 to 16.	From 16 to 21.	From 21 to 45.	From 45 to 60.	Upwards of 60.	Under 5 years.	From 5 to 16.	From 16 to 21.	From 21 to 45.	From 45 to 60.	Upwards of 60.								Males.	Females.
No. 38,	19	60	39	66	39	12	45	23	43	77	17	10	—	—	—	—	—	376	501	—	—
No. 39,	45	91	29	35	23	12	37	44	32	43	17	7	—	—	—	—	—	406	552	—	—
No. 40,	53	117	48	99	47	39	43	119	53	75	30	21	—	—	—	—	—	515	703	—	—
No. 41,	71	142	61	140	47	31	71	133	49	51	33	21	—	—	—	—	—	537	979	—	—
No. 42,	77	91	39	83	37	13	39	91	39	97	36	13	—	—	—	—	—	452	598	—	—
No. 55, and Boughton Island,	69	161	67	153	37	20	72	147	76	112	43	21	—	—	—	—	—	571	1021	—	—
No. 56,	69	106	30	39	33	22	61	97	50	110	36	15	—	—	—	—	—	530	728	—	—
Total,	371	768	307	735	258	133	371	755	332	738	210	103	—	3	2	4	1291	3191	5085	12	12

Members of Church of Eng- land.
36
23
23
49
174

District

of King's County.

Total number.	INDIANS.	
	Males.	Females.
5085	12	12
Members of Church of England.		
Free Church.		
Kirk of Scotland.		
Presbytery of P. E. I.		
Roman Catholics.		
Methodists.		
Baptists.		
Bible Christians.		
Quakers.		
Jews.		
Universalists.		
Mormons.		
Unitarians.		
Other denominations.		
Religious profession not stated.		
NATIVES OF		
Eng. & I.		
Scotland.		
Ireland.		
British Colonies.		
P. E. Island.		
Other countries.		
Country not stated.		
Total number of Males.		
Total number of Females.		
Total number of Inhabitants.		



Second Electoral District

NUMBER OF TOWNSHIPS.	NUMBER OF ACRES HELD					No. of acres of arable land.	CROPS RAISED IN 1854.							
	In fee simple.	Under lease.	By written leases.	By verbal agreement.	By occupants who are neither freeholders nor tenants.		Bushels of WHEAT.	Bushels of BARLEY.	Bushels of OATS.	Bushels of RICKWHEAT.	Bushels of POTATOES.	Bushels of TURNIPS.	Hs. of CLOVERSEED.	Tons of HAY.
No. 38,	7,084	1,092	—	629	150	22,855	2,731	1,107	9,385	18,180	5,160	—	169	
No. 39,	7,038	59	—	129	—	2,066	3,733	1,013	12,817	14,378	2,167	—	261	
No. 40,	5,599	2,298	—	185	—	2,981	3,317	5,260	1,211	22,313	5,051	—	312	
No. 41,	1,716	626	361	5,102	190	6,842	4,762	4,306	15,879	21,111	2,378	—	163	
No. 42,	2,261	1,215	405	2,120	520	2,063	2,101	1,829	12,136	13,557	1,631	—	139	
No. 55, and Boughton Island	12,965	599	130	178	—	3,790	3,659	2,935	19,526	18,843	3,623	120	599	
No. 56,	1,203	5,320	549	722	—	2,012	3,215	1,640	16,872	14,635	7,881	—	471	
Total,	26,866	11,209	2,016	9,665	3,811	22,375	25,521	12,011	88,236	121	123,520	28,987	54	2,092

of

No. of Threshing Machines.

8
10
11
12
13
14
15

38

District

of King's County.

DUPLICATES OF RETURNS.	lbs. of CLOVERSEED.	Tons of Hay.
160		160
167		294
351		312
377		163
633	12	133
633	20	590
721		471
987	54	2,092

No. of Threshing Machines.	Horses.	Neat Cattle.	Sheep.	Hogs.	Number of Churches.	School-houses.	Brewing and Distilling Establishments.	Tanneries.	Tobacco Manufactories.	Fishing Establishments.	NUMBER OF MILLS.			
											Grist Mills.	Carding Mills.	Saw Mills.	Fulling and Dressing Mills.
8	139	523	872	317	12	2					1			
10	133	473	117	374	12	4					1			
3	193	632	1,086	661	12	2					2			
2	192	767	1,172	437	1	1					1			
3	183	501	819	337	12	3					1			
5	290	722	1,453	530	12	3					1			
7	163	708	913	401	1	1					2			
53	1,192	4,487	7,033	3,067	8	19		3		2	8	2	7	

Third Electoral District

NUMBER OF TOWNSHIPS.	MALES.						FEMALES.						Ages not stated.	Deaf and Dumb.	Blind.	Insane.	Married.	Single.	Total number.	INDIANS.		
	Under 5 years.	From 5 to 16.	From 16 to 21.	From 21 to 45.	From 45 to 60.	Upwards of 60.	Under 5 years.	From 5 to 16.	From 16 to 21.	From 21 to 45.	From 45 to 60.	Upwards of 60.								Males.	Females.	
No. 51,	92	169	59	98	52	17	72	153	75	111	40	10	—	—	—	—	—	276	672	948	—	—
No. 52,	96	98	42	104	31	27	66	104	51	120	36	12	—	—	—	—	—	204	559	763	—	—
No. 53,	63	107	40	90	30	9	62	109	47	109	25	10	—	—	—	—	—	220	471	691	—	—
No. 54,	36	51	36	71	20	8	24	64	37	53	17	3	—	—	—	—	—	124	236	360	—	—
No. 59,	105	169	54	154	45	23	94	150	40	169	34	20	—	—	—	—	—	327	729	1056	—	—
No. 61, and Pamure Island,	77	106	21	69	30	20	53	112	30	87	25	12	—	—	—	—	—	167	474	641	—	—
No. 63,	62	90	27	81	25	20	49	87	39	81	26	15	—	—	—	—	—	184	424	608	—	—
No. 64,	120	214	57	156	59	28	116	232	69	175	40	29	—	—	—	—	—	377	897	1274	—	—
No. 66,	21	36	24	59	10	11	39	51	28	44	13	2	—	—	—	—	—	112	226	338	—	—
Total,	642	1046	360	882	302	163	575	1052	422	949	256	113	—	3	3	2	2004	4757	6762	3	4	

Members of Church of Eng-land. 31 32 57 11 11 17 17 37 250

District

of King's County.

	Total number.	INDIANS.	
		Males.	Females.
7	6762	3	1
6	11	1	1
5	335	1	1
4	17	1	1
3	612	1	1
2	1057	1	1
1	571	1	1
	31	1	1

	Members of Church of Eng-land.	Free Church.	Kirk of Scotland.	Presbytery of P. E. I.	Roman Catholics.	Methodists.	Baptists.	Bible Christians.	Quakers.	Jews.	Universalists.	Mormons.	Unitarians.	Other denominations.	Religious profession not stated.	NATIVES OF					Country not stated.	Total number of Males.	Total number of Females.	Total number of Inhabitants.
																England.	Scotland.	Ireland.	British Colonies.	P. E. Island.				
250	1837	917	33	248	86	601	517	1	1	1	1	1	1	1	1	1	1	1	1	1	1	1	1	1
32	16	16	16	16	16	16	16	16	16	16	16	16	16	16	16	16	16	16	16	16	16	16	16	16
253	1044	484	294	4618	9	67	3398	3371	6769	487	368	395	763	461	348	339	362	701	420	642	1285	338	6769	

Third Electoral District

NUMBER OF TOWNSHIPS.	NUMBER OF ACRES HELD					No. of acres of arable land.	CROPS RAISED IN 1854.							
	In fee simple.	Under lease.	By written demise.	By verbal agreement.	By persons who are neither freeholders nor tenants.		Bushels of WHEAT.	Bushels of BARLEY.	Bushels of OATS.	Bushels of BUCKWHEAT.	Bushels of POTATOES.	Bushels of TURNIPS.	Lbs. of CLOVERSEED.	Tons of HAY.
No. 51.	4,423	8,061	216	100	56	2,969	4,143	502	15,165	200	28,638	3,728	—	300
No. 52.	7,241	1,212	70	20	3,764	2,914	3,984	884	11,485	51	26,707	4,544	39	310
No. 53.	17,49	2,246	265	150	435	1,196	2,656	786	10,115	2	18,731	3,460	—	218
No. 54.	2,934	614	306	—	1,820	1,305	1,106	618	4,678	3	6,914	1,053	—	137
No. 59.	4,697	9,920	70	—	700	3,095	4,421	794	17,315	25	28,055	6,770	—	349
No. 61, and Panmure Land.	614	4,961	200	—	50	1,533	2,756	1,180	7,080	26	15,567	1,418	40	160
No. 63.	2,375	3,210	726	796	80	1,545	3,137	2,070	10,704	21	17,371	3,467	10	198
No. 64.	3,854	7,005	1,130	478	270	5,770	5,334	1,624	22,553	79	31,867	9,186	—	354
No. 66.	410	—	—	100	5,337	1,285	1,860	199	7,411	—	12,410	468	—	111
Total.	28,398	37,252	2,983	1,104	12,512	24,612	29,397	8,657	106,506	413	186,260	34,094	89	2,210

No. of Threshing Machines.

1
1
1
2
2
3
3
7
11
1

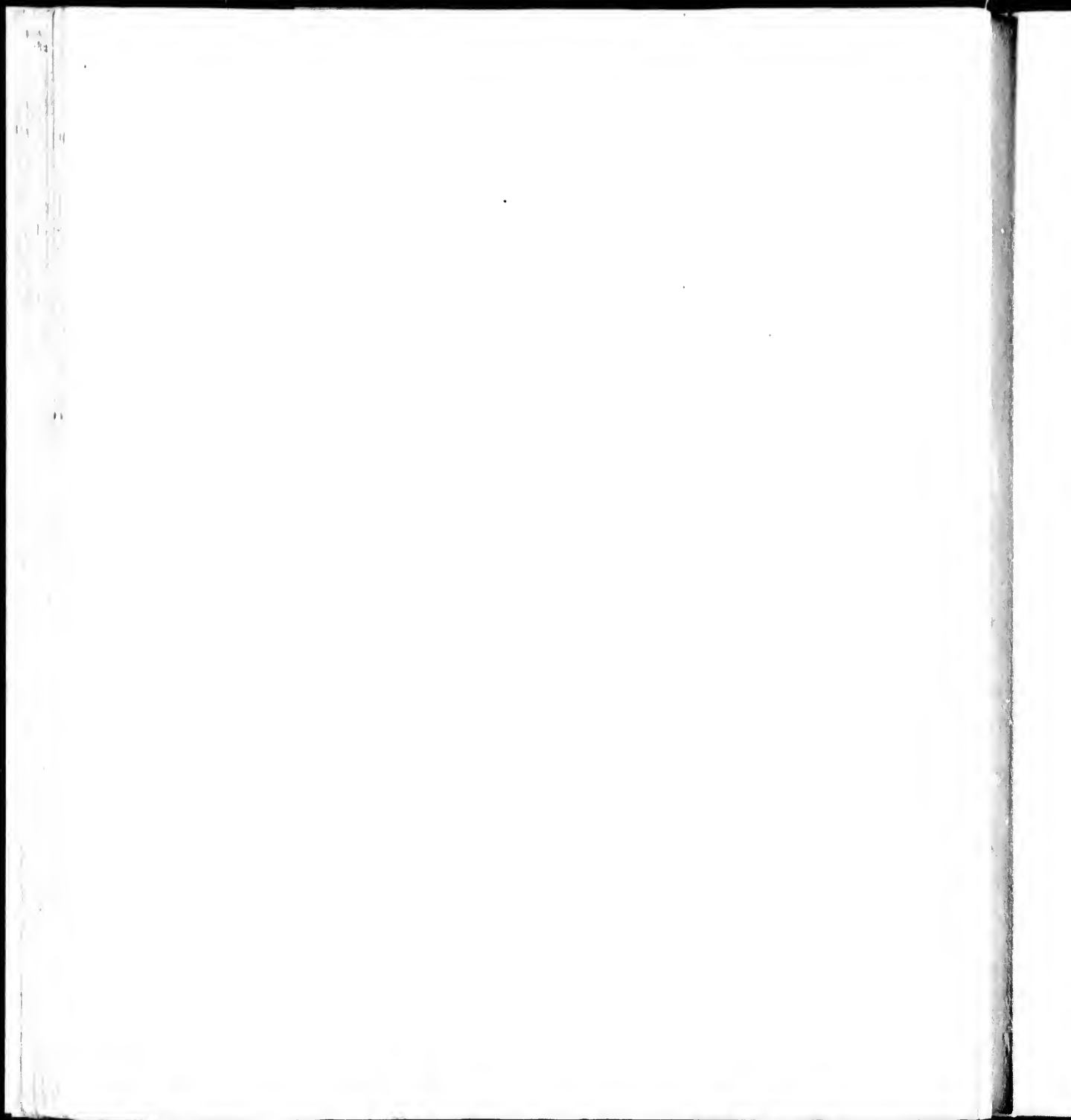
30

District

of King's County.

BUSHELS OF TURNIPS.	LBS. OF CLOVERSEED.	TONS OF HAY.
5,728	—	309
5,544	39	310
4,460	—	218
3,053	—	137
3,770	—	349
4,418	40	160
3,467	10	198
9,186	—	354
408	—	114
1,094	39	2,210

No. of Threshing Machines.	Horses.	Neat Cattle.	Sheep.	Hogs.	Number of Churches.	School-houses.	Brewing and Distilling Establishments.	Tanneries.	Tobacco Manufactories.	Fishing Establishments.	NUMBER OF MILLS.			
											Grist Mills.	Carding Mills.	Saw Mills.	Fulling and Dressing Mills.
1	168	704	1,152	196	1	1	—	—	—	—	1	1	1	1
1	139	718	1,045	504	1	3	—	—	—	—	4	6	6	1
2	107	515	739	361	1	1	—	—	—	—	1	1	1	—
2	54	285	394	170	—	—	—	—	—	—	—	—	—	—
2	179	298	1,276	504	—	5	—	—	—	—	4	4	6	—
3	109	156	640	398	—	1	—	—	—	—	1	1	3	—
7	111	523	670	347	1	2	—	—	—	—	4	1	4	—
11	205	281	1,587	459	1	6	—	—	—	—	—	—	—	—
1	66	285	404	182	—	1	—	—	—	—	—	—	—	—
39	1,138	5,203	7,917	3,364	2	23	—	2	—	—	17	5	22	2



City of Charlottetown

Under 5 years.	MALES.					FEMALES.										INDIANS.			
	From 5 to 16.	From 16 to 21.	From 21 to 45.	From 45 to 60.	Upwards of 60.	Under 5 years.	From 5 to 16.	From 16 to 21.	From 21 to 45.	From 45 to 60.	Upwards of 60.	Deaf and Dumb.	Blind.	Insane.	Married.	Single.	Total number.	Males.	Females.
552	896	841	977	244	142	509	846	429	1239	1211	123	2	4	26	1911	1599	6513	—	—

Members of Church of Eng-
land.

1539

City of Charlottetown

NUMBER OF ACRES HELD					No. of acres of arable land.	CROPS RAISED IN 1854.							
In fee simple.	Under lease.	By written demise.	By verbal agreement.	By occupants who are neither freeholders nor tenants.		Bushels of WHEAT.	Bushels of BARLEY.	Bushels of OATS.	Bushels of BUCKWHEAT.	Bushels of POTATOES.	Bushels of TURNIPS.	lbs. of CLOVERSEED.	Tons of HAY.
2,811½	1,717	36	222	211	3,955½	12,554	5,468	18,501	337	19,284	74,770	—	934

No. of Threshing Machines.

10

lottetown

and Royalty.

70	lbs. of CLOVERSEED.	
1		
931	Tons of HAY.	

No. of Threshing Machines.	Horses.	Neat Cattle.	Sheep.	Hogs.	Number of Churches.	School-houses.	Brewing and Distilling Establishments.	Tanneries.	Tobacco Manufactories.	Fishing Establishments.	NUMBER OF MILLS.			
											Grist Mills.	Carding Mills.	Saw Mills.	Fulling and Dressing Mills.
10	351	524	570	115	6	12	1	7	12	1	3	2	1	1

Princetown

MALES.						FEMALES.						INDIANS.							
Under 5 years.	From 5 to 16.	From 16 to 21.	From 21 to 45.	From 45 to 60.	Upwards of 60.	Under 5 years.	From 5 to 16.	From 16 to 21.	From 21 to 45.	From 45 to 60.	Upwards of 60.	Deaf and Dumb.	Blind.	Insane.	Married.	Single.	Total number.	Males.	Females.
22	51	19	57	12	35	22	56	25	75	10	25	—	—	—	108	297	405	—	—

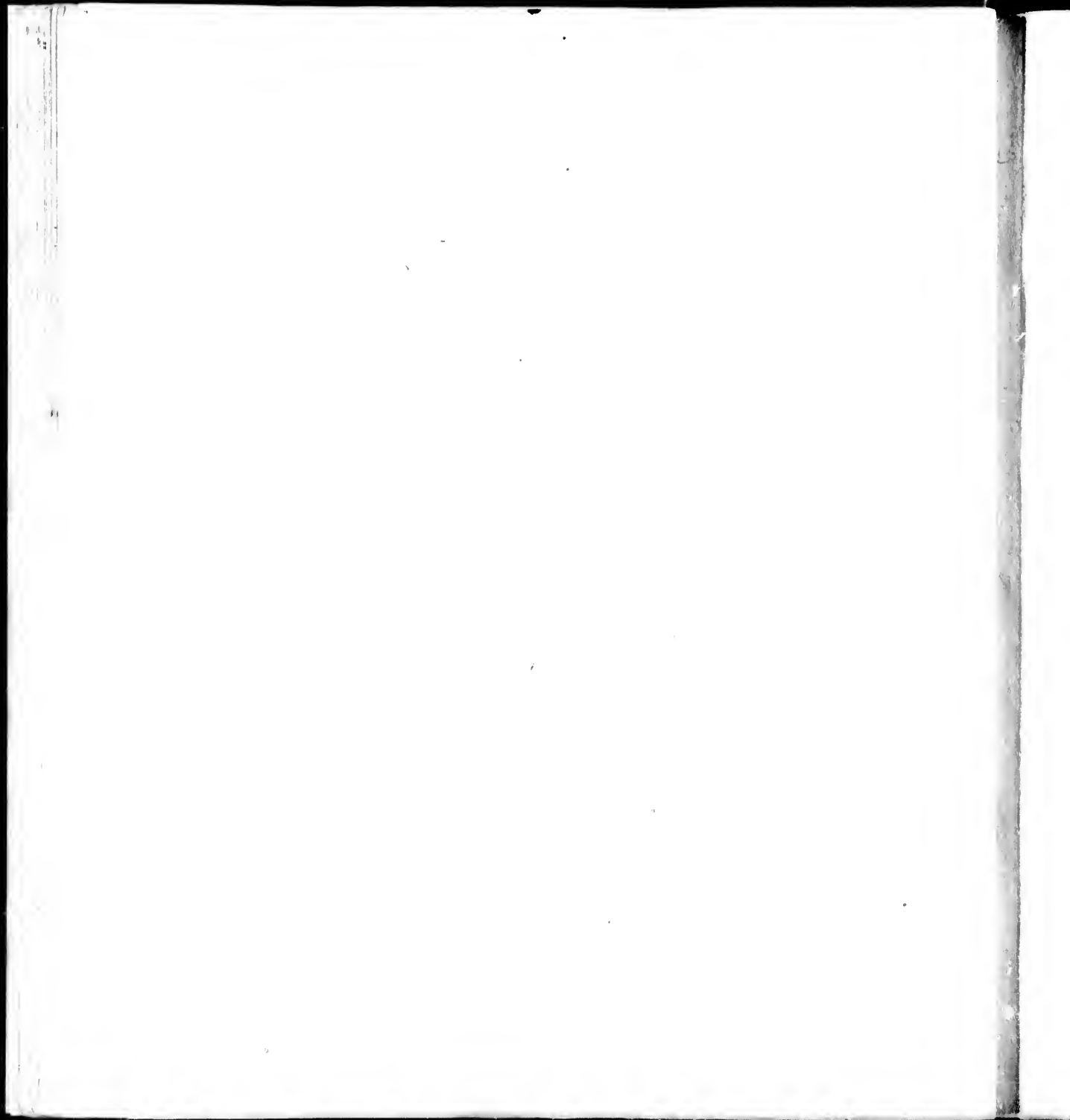
Members of Church of Eng-
land.

ncetown

and Royalty.

7		
405	Total number.	
1	Males.	
1	Females.	
	INDIANS.	

	Members of Church of England.	NATIVES OF			
		England.	Scotland.	Ireland.	British Colonies.
1	Free Church.				
2	Kirk of Scotland.				
5	Presbytery of P. E. I.				
552	Roman Catholics.				
12	Methodists.				
1	Baptists.				
1	Bible Christians.				
1	Quakers.				
1	Jews.				
1	Universalists.				
1	Mormons.				
1	Unitarians.				
1	Other denominations.				
1	Religious profession not stated.				
6	England.				
12	Scotland.				
17	Ireland.				
27	British Colonies.				
341	P. E. Island.				
2	Other countries.				
1	Country not stated.				
190	Total number of Males.				
215	Total number of Females.				
405	Total number of Inhabitants.				

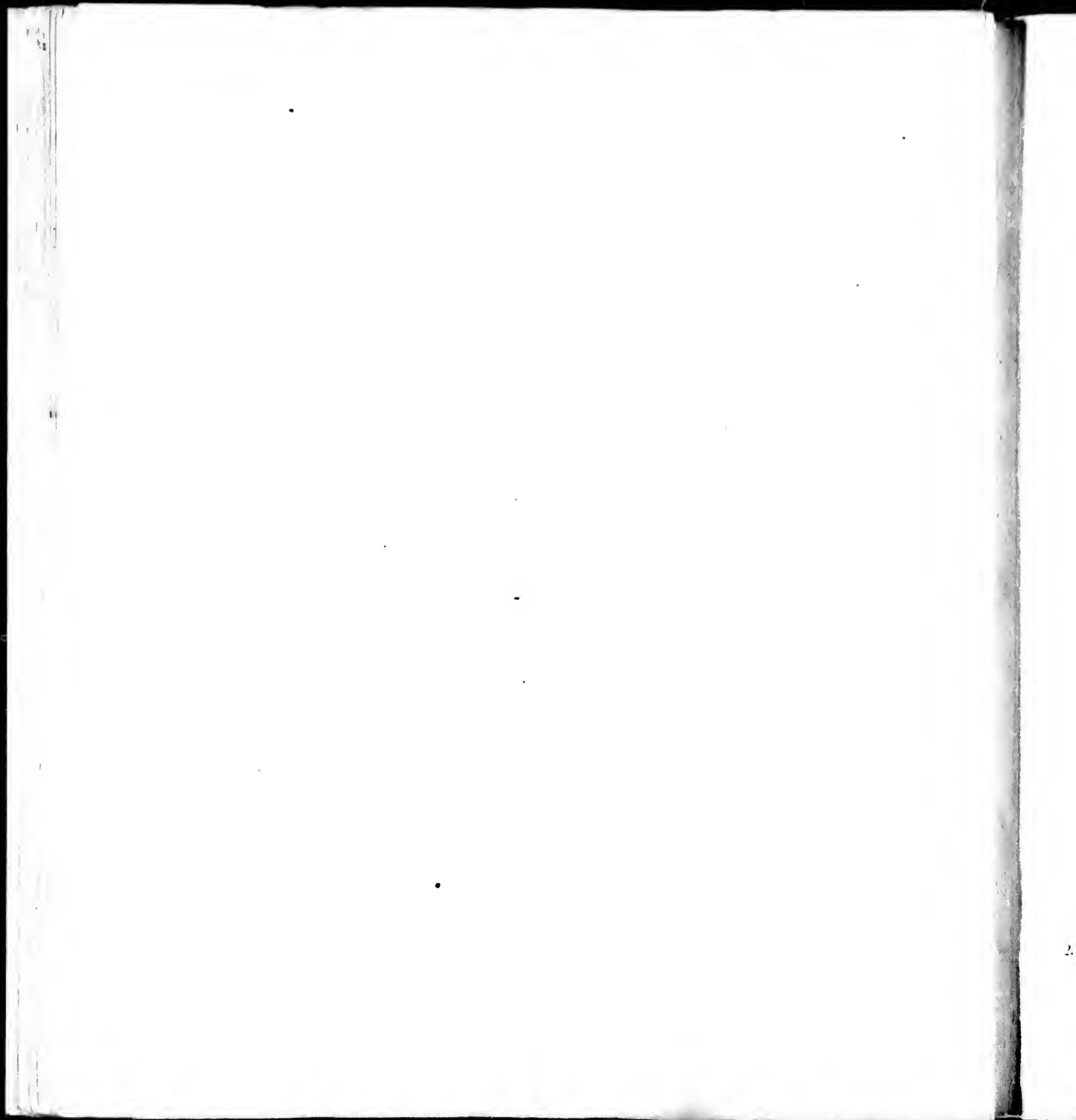


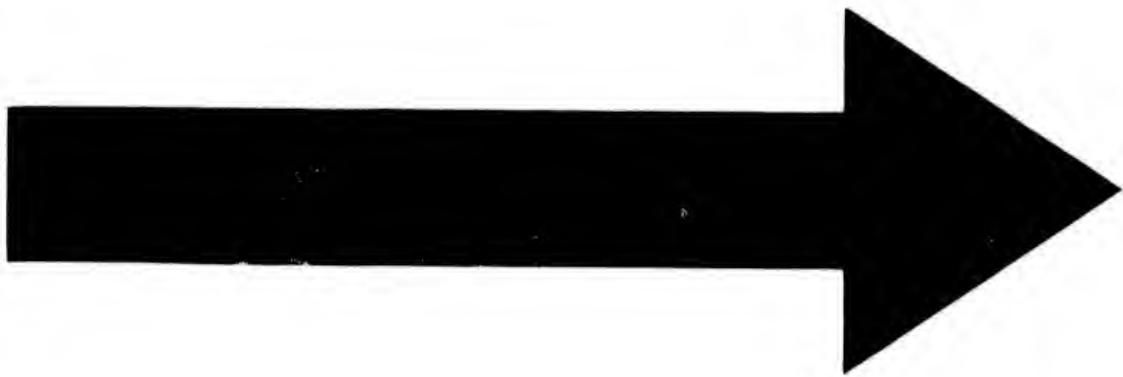
Princetown

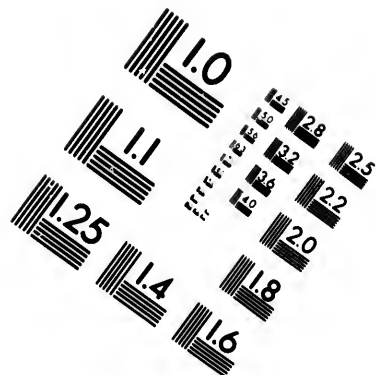
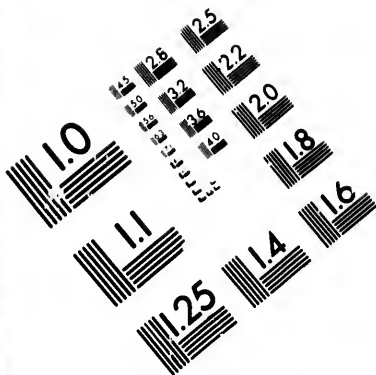
NUMBER OF ACRES HELD					No. of acres of arable land.	CROPS RAISED IN 1854.							
In fee simple.	Under lease.	By written leases.	By verbal agreement.	By occupants who are not leaseholders nor tenants.		Bushels of WHEAT	Bushels of BARLEY.	Bushels of OATS.	Bush. of BUCKWHEAT.	Bushels of POTATOES.	Bushels of TURNIPS.	lbs. of CLOVERSEED.	Tons of HAY.
5,532	749	50	54	31	3,103½	4,263	802	13,939	66	14,270	7,925	161	315

No. of Threshing Machines.

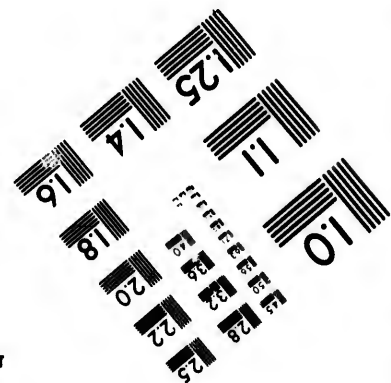
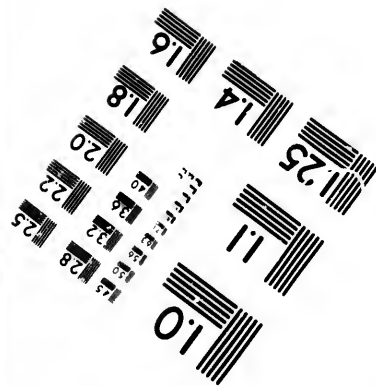
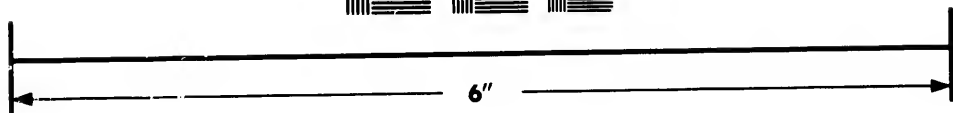
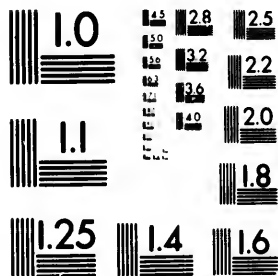
11







**IMAGE EVALUATION
TEST TARGET (MT-3)**



**Photographic
Sciences
Corporation**

23 WEST MAIN STREET
WEBSTER, N.Y. 14580
(716) 872-4503

13 128
14 128
15 128
16 128
17 128
18 128
19 128
20 128
21 128
22 128
23 128
24 128
25 128

10
11
12
13
14
15
16
17
18
19
20
21
22
23
24
25

Georgetown, Reserved

MALES.						FEMALES.						INDIANS.							
Under 5 years.	From 5 to 16.	From 16 to 21.	From 21 to 45.	From 45 to 60.	Upwards of 60.	Under 5 years.	From 5 to 16.	From 16 to 21.	From 21 to 45.	From 45 to 60.	Upwards of 60.	Deaf and Dumb.	Blind.	Insane.	Married.	Single.	Total number.	Males.	Females.
42	102	81	110	41	19	48	107	76	103	30	9	—	—	—	224	544	768	—	—

Reserved

Lands, and Royalty.

Single.	Total number.	INDIANS.	
		Males.	Females.
544	768	—	—

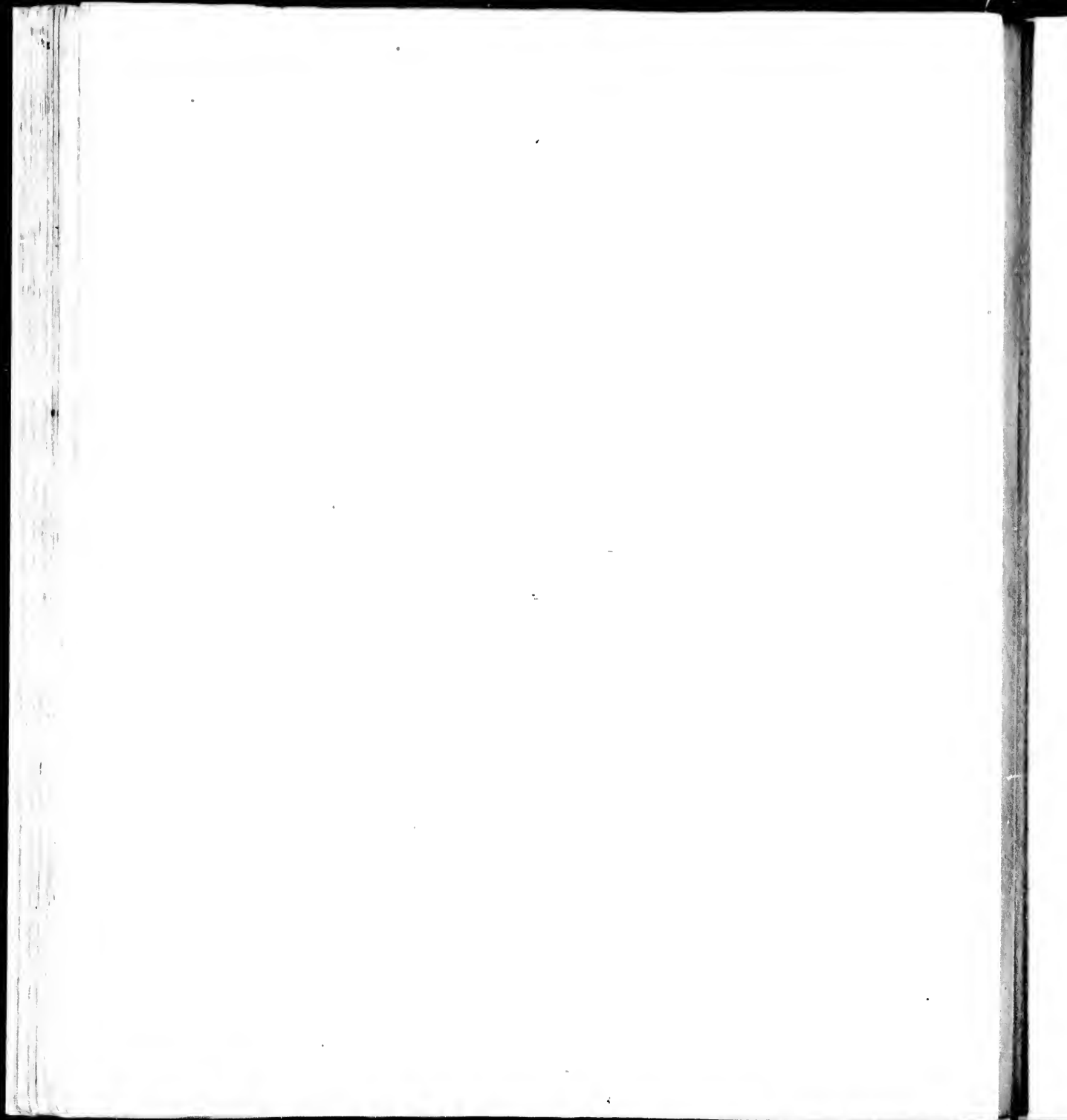
Members of Church of Eng-land.	NATIVES OF																							
	Free Church.	Kirk of Scotland.	Presbytery of P. E. I.	Roman Catholics.	Methodists.	Baptists.	Bible Christians.	Quakers.	Jews.	Universalists.	Mormons.	Unitarians.	Other denominations.	Religious profession not stated.	England.	Scotland.	Ireland.	British Colonies.	P. E. Island.	Other countries.	Country not stated.	Total number of Males.	Total number of Females.	Total number of Inhabitants.
174	17	122	—	24	—	—	5	—	—	—	—	—	2	—	64	51	54	74	522	3	—	395	373	768

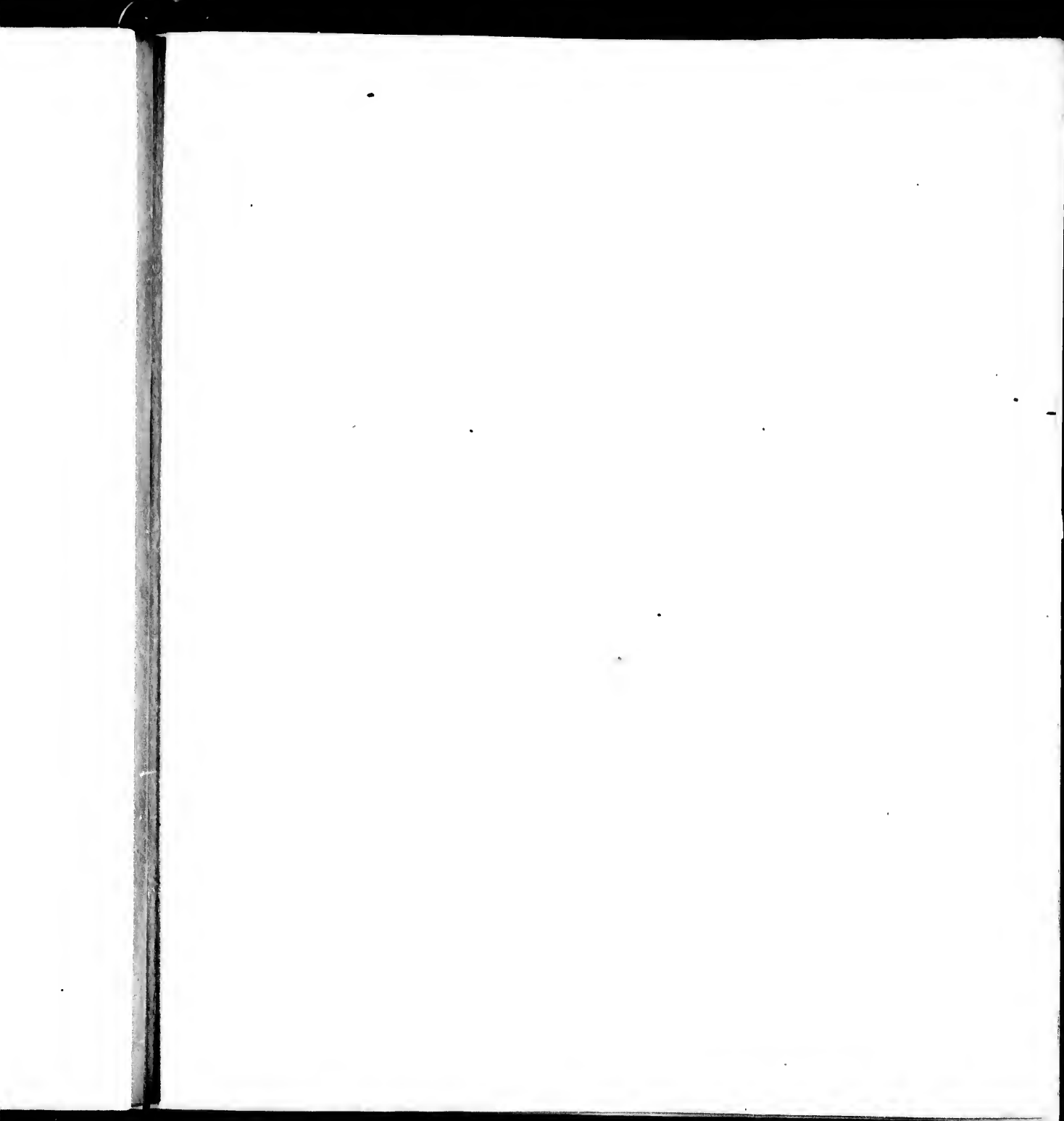
2.

91

Georgetown, Reserved

NUMBER OF ACRES HELD					No. of acres of arable land.	CROPS RAISED IN 1854.							
In fee simple.	Under lease.	By written demise.	By verbal agreement.	By occupants who are neither freeholders nor tenants.		Bushels of WHEAT	Bushels of BARLEY	Bushels of OATS.	Bush. of BUCKWHEAT.	Bushels of POTATOES.	Bushels of TURNIPS.	Lbs. of CLOVERSEED.	Tons of HAY.
3,120	256	—	—	—	1,406	2,085	70	5,632	—	10,544	4,760	—	162

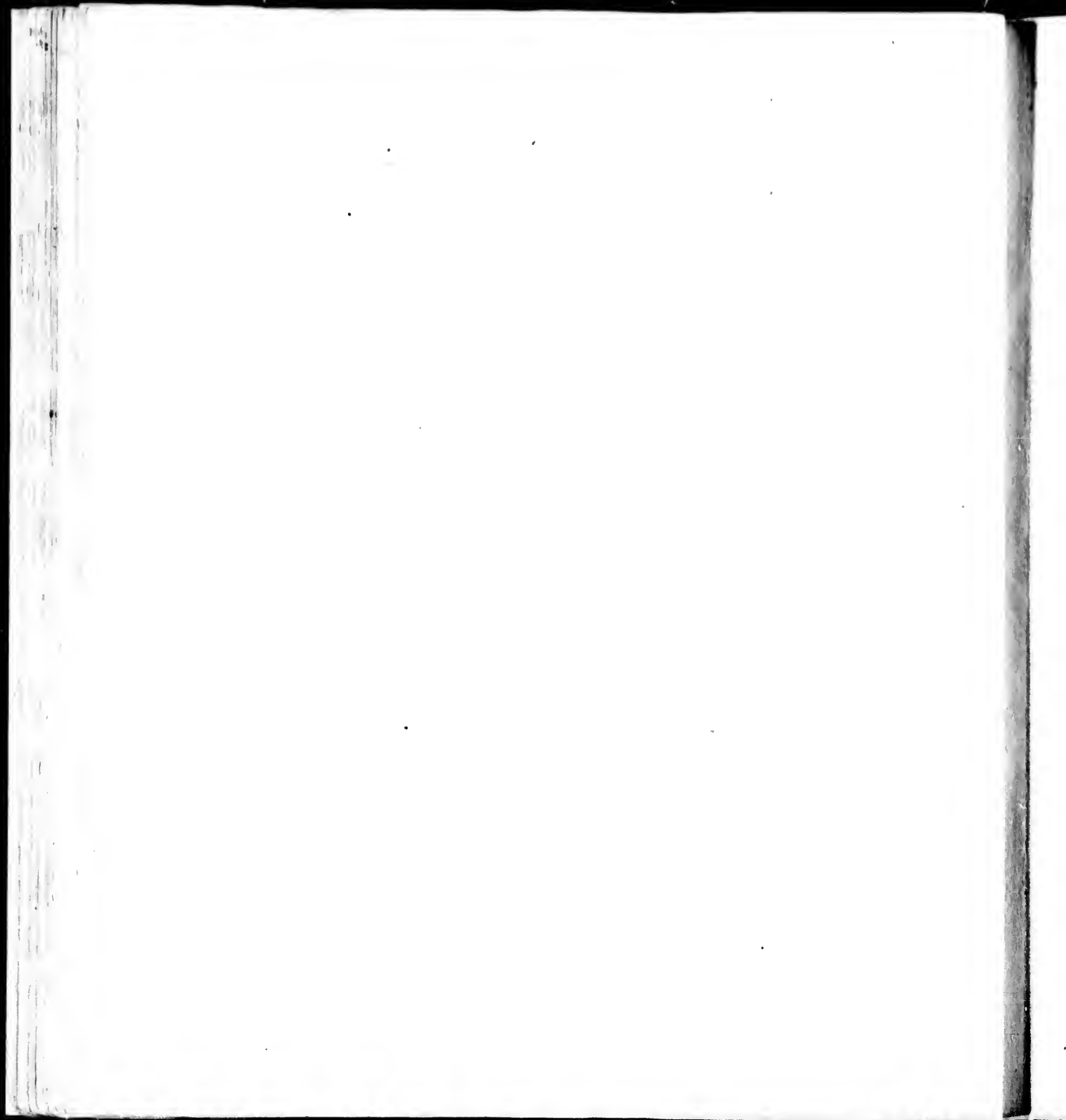


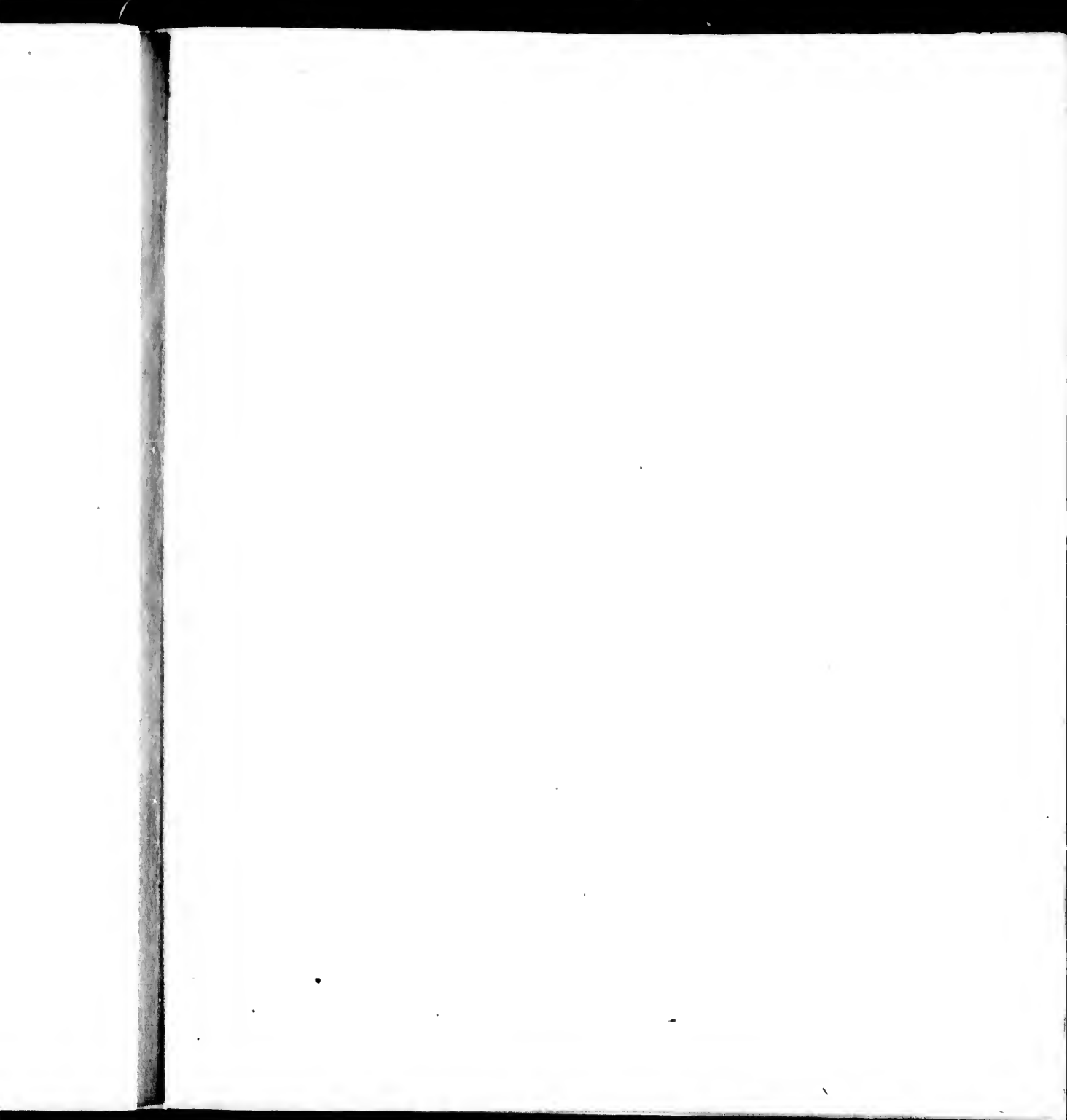


Abstract of the Returns of the

ELECTORAL DISTRICTS, &c.		MALES.						FEMALES.						INDIANS.								
		Under 5 years.	5 and under 16.	16 and under 21.	21 and under 45.	45 and under 60.	Upwards of 60.	Under 5 years.	5 and under 16.	16 and under 21.	21 and under 45.	45 and under 60.	Upwards of 60.	Ages not stated.	Deaf and Dumb.	Blind.	Insane.	No. of Married.	No. of Single.	Total.	Males.	Females.
Prince County.	First District, . . .	684	1176	395	1655	307	185	594	1165	437	959	263	117	11	1	3	9	2110	5211	7321	52	42
	Second District, . . .	392	663	238	634	181	122	357	599	289	623	196	79	1	1	3	9	1269	3048	4367	1	1
	Third District, . . .	439	866	288	710	228	166	479	792	333	752	236	108	1	1	1	3	1483	3864	5347	9	7
	P. Town & Royalty, . . .	42	51	19	58	12	25	25	56	27	75	10	25	—	—	—	—	108	297	405	—	—
	Total, . . .	1537	2759	940	2461	728	498	1462	3522	1086	2389	699	328	13	3	5	21	4970	12,170	17,140	62	50
Queen's County.	First District, . . .	931	1688	728	1457	181	323	881	1679	747	1156	1677	256	—	9	6	11	3092	8012	11,104	16	17
	Second District, . . .	992	1793	695	1411	526	332	919	1619	661	1166	125	261	—	10	8	15	3004	8101	11,105	71	71
	Third District, . . .	643	1194	127	1013	361	217	666	1041	494	1102	314	189	—	12	1	10	2114	5577	7691	6	5
	Cn. Town & Royalty, . . .	552	896	341	978	244	142	509	846	429	1239	214	123	—	2	2	126	1914	4599	6513	—	—
	Total, . . .	3121	5571	2491	4322	1616	1044	3008	5245	2334	3263	1424	832	—	33	19	65	10,124	26,292	36,416	93	93
King's County.	First District, . . .	304	714	288	700	257	114	306	662	335	742	205	89	—	1	3	7	1216	3506	4716	—	—
	Second District, . . .	371	768	307	733	253	133	374	755	342	739	216	103	—	3	3	4	1294	3791	5085	—	2
	Third District, . . .	642	1046	360	882	302	163	575	1052	422	949	256	113	—	3	3	2	2004	4758	6762	3	4
	G. Town & Royalty, . . .	42	102	81	149	41	19	48	197	76	103	30	9	—	—	—	—	224	544	768	—	—
	Total, . . .	1360	2630	1036	2425	853	429	1333	2576	1179	2530	704	314	—	7	8	13	4732	12,599	17,331	5	6
Total P. E. Island, . . .		6017	10,990	4077	8801	3196	1911	5763	10,313	4595	10,182	2821	1474	13	18	32	99	19,826	51,361	71,187	160	149

Members of Church of England. 789, 723, 337, 406, 1299, 1140, 218, 1539, 4106, 67, 174, 250, 174, 665, 6714





Statistical

Returns of P. E. Island.—1855.

1854.

Bushels of TURNIPS.	Lbs. of CLOVERSEED.	Tons of HAY.
41,215	—	2,602
42,507	161	2,142
108,926	2,963	3,722
7,925	161	315
200,603	3,285	8,782
195,165	1,187	5,719
165,157	510	5,713
33,228	102	3,626
71,770	—	931
68,320	2,009	16,052
19,783	660	1,814
28,997	54	2,092
31,094	89	2,210
4,760	—	162
87,634	803	6,278
756,557	6,187	31,112
153,933	14,900	45,128
602,624	—	—
—	8,713	14,015

No. of Threshing Machines.	Horses.	Nat Cattle.	Sheep.	Hogs.	Number of Churches.	School-houses.	Brewing and Distilling Establishments.	Tanneries.	Tobacco Manufactories.	Fishing Establishments.	NUMBER OF MILLS.			
											Grist Mills.	Carding Mills.	Saw Mills.	Fulling and Dressing Mills.
42	1476	5500	11,382	3619	16	21	12	12	—	7	18	7	24	—
64	958	3115	5789	2105	11	20	12	3	—	1	10	12	6	—
125	1605	6039	10,550	2313	10	18	—	4	—	—	13	4	16	—
11	134	400	889	280	1	12	—	—	—	—	—	—	—	—
242	4173	15,331	28,610	8617	38	61	6	9	—	2	41	13	46	2
191	2691	10,288	18,353	4378	28	47	7	7	—	3	20	6	17	12
74	2123	8598	16,297	5612	15	42	—	5	—	1	18	6	27	—
41	1148	6118	11,877	3020	12	27	—	—	—	—	15	6	16	—
10	351	821	870	418	6	12	4	7	—	—	3	2	1	1
316	6016	23,858	47,307	11,028	61	128	11	21	12	4	56	20	61	3
30	1018	4031	6736	2882	8	18	—	—	—	23	9	4	7	1
38	1192	4187	7038	3067	8	19	—	3	—	12	8	12	—	—
39	1138	5203	7917	3361	8	23	—	2	—	—	17	5	22	12
5	76	226	411	222	4	3	—	4	—	—	—	—	1	—
112	3124	13,947	22,132	9532	28	63	—	9	—	25	34	11	37	3
770	14,513	55,159	98,019	32,207	127	252	17	39	12	37	131	41	111	8
246	12,845	49,310	92,785	19,863	109	182	13	—	—	—	116	27	139	—
524	1668	5819	5261	12,314	18	70	4	—	—	—	15	17	5	—

