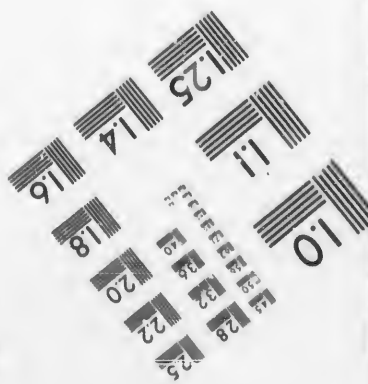
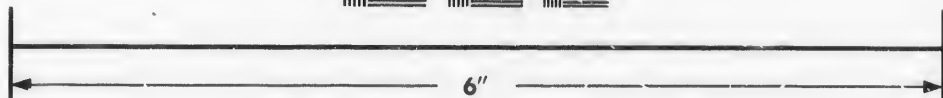
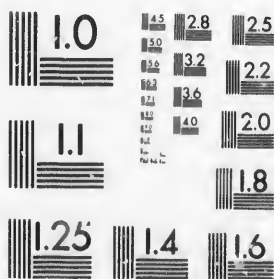


**IMAGE EVALUATION
TEST TARGET (MT-3)**



**Photographic
Sciences
Corporation**

23 WEST MAIN STREET
WEBSTER, N.Y. 14580
(716) 872-4503

**CIHM/ICMH
Microfiche
Series.**

**CIHM/ICMH
Collection de
microfiches.**



Canadian Institute for Historical Microreproductions / Institut canadien de microreproductions historiques

© 1986

Technical and Bibliographic Notes/Notes techniques et bibliographiques

The Institute has attempted to obtain the best original copy available for filming. Features of this copy which may be bibliographically unique, which may alter any of the images in the reproduction, or which may significantly change the usual method of filming, are checked below.

L'Institut a microfilmé le meilleur exemplaire qu'il lui a été possible de se procurer. Les détails de cet exemplaire qui sont peut-être uniques du point de vue bibliographique, qui peuvent modifier une image reproduite, ou qui peuvent exiger une modification dans la méthode normale de filmage sont indiqués ci-dessous.

- Coloured covers/
Couverture de couleur
- Covers damaged/
Couverture endommagée
- Covers restored and/or laminated/
Couverture restaurée et/ou pelliculée
- Cover title missing/
Le titre de couverture manque
- Coloured maps/
Cartes géographiques en couleur
- Coloured ink (i.e. other than blue or black)/
Encre de couleur (i.e. autre que bleue ou noire)
- Coloured plates and/or illustrations/
Planches et/ou illustrations en couleur
- Bound with other material/
Relié avec d'autres documents
- Tight binding may cause shadows or distortion
along interior margin/
La reliure serrée peut causer de l'ombre ou de la
distorsion le long de la marge intérieure
- Blank leaves added during restoration may
appear within the text. Whenever possible, these
have been omitted from filming/
Il se peut que certaines pages blanches ajoutées
lors d'une restauration apparaissent dans le texte,
mais, lorsque cela était possible, ces pages n'ont
pas été filmées.
- Additional comments:/
Commentaires supplémentaires

- Coloured pages/
Pages de couleur
- Pages damaged/
Pages endommagées
- Pages restored and/or laminated/
Pages restaurées et/ou pelliculées
- Pages discoloured, stained or foxed/
Pages décolorées, tachetées ou piquées
- Pages detached/
Pages détachées
- Showthrough/
Transparence
- Quality of print varies/
Qualité inégale de l'impression
- Includes supplementary material/
Comprend du matériel supplémentaire
- Only edition available/
Seule édition disponible
- Pages wholly or partially obscured by errata
slips, tissues, etc., have been refilmed to
ensure the best possible image/
Les pages totalement ou partiellement
obscurcies par un feuillet d'errata, une pelure
etc., ont été filmées à nouveau de façon à
obtenir la meilleure image possible

This item is filmed at the reduction ratio checked below/
Ce document est filmé au taux de réduction indiqué ci-dessous.

10X	14X	18X	22X	26X	30X
<input type="checkbox"/>	<input type="checkbox"/>	<input checked="" type="checkbox"/>	<input type="checkbox"/>	<input type="checkbox"/>	<input type="checkbox"/>
12X	16X	20X	24X	28X	32X

The copy filmed here has been reproduced thanks to the generosity of:

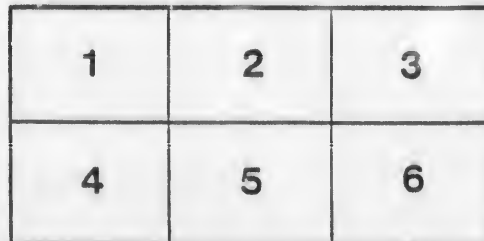
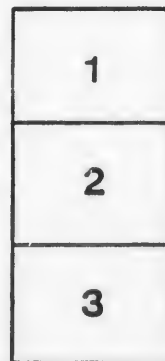
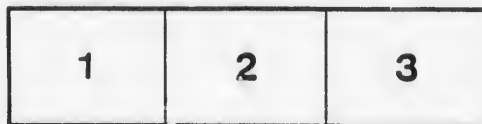
Archives of Ontario
Toronto

The images appearing here are the best quality possible considering the condition and legibility of the original copy and in keeping with the filming contract specifications.

Original copies in printed paper covers are filmed beginning with the front cover and ending on the last page with a printed or illustrated impression, or the back cover when appropriate. All other original copies are filmed beginning on the first page with a printed or illustrated impression, and ending on the last page with a printed or illustrated impression.

The last recorded frame on each microfiche shall contain the symbol \longrightarrow (meaning "CONTINUED"), or the symbol ∇ (meaning "END"), whichever applies.

Maps, plates, charts, etc., may be filmed at different reduction ratios. Those too large to be entirely included in one exposure are filmed beginning in the upper left hand corner, left to right and top to bottom, as many frames as required. The following diagrams illustrate the method:



L'exemplaire filmé fut reproduit grâce à la générosité de:

Archives of Ontario
Toronto

Les images suivantes ont été reproduites avec le plus grand soin, compte tenu de la condition et de la netteté de l'exemplaire filmé, et en conformité avec les conditions du contrat de filmage.

Les exemplaires originaux dont la couverture en papier est imprimée sont filmés en commençant par le premier plat et en terminant soit par la dernière page qui comporte une empreinte d'impression ou d'illustration, soit par le second plat, selon le cas. Tous les autres exemplaires originaux sont filmés en commençant par la première page qui comporte une empreinte d'impression ou d'illustration et en terminant par la dernière page qui comporte une telle empreinte.

Un des symboles suivants apparaîtra sur la dernière image de chaque microfiche, selon le cas: le symbole \longrightarrow signifie "A SUIVRE", le symbole ∇ signifie "FIN".

Les cartes, planches, tableaux, etc., peuvent être filmés à des taux de réduction différents. Lorsque le document est trop grand pour être reproduit en un seul cliché, il est filmé à partir de l'angle supérieur gauche, de gauche à droite, et de haut en bas, en prenant le nombre d'images nécessaires. Les diagrammes suivants illustrent la méthode.

ails
du
modifier
une
page

trata
o

pelure
n à



32X

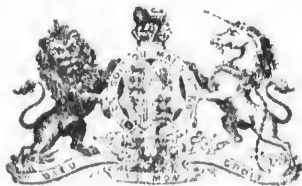
LIST OF VOTERS

FOR THE VILLAGE OF

Holland Landing

FOR THE

Year 1876.



NEWMARKET:

PRINTED AT THE NEWMARKET ERA LOOK AND JOB OFFICE, MAIN ST.

1876.

Donated to the Archives
by Wm. Perkins Bull,
K.C.,
October, 1933.



LIST OF VOTERS

FOR THE VILLAGE OF

Holland Landing

FOR THE

Year 1876.



NEWMARKET:

PRINTED AT THE NEWMARKET ERA BOOK AND JOB OFFICE, MAIN ST.

1876.

THE HISTORY OF THE

REIGN OF

CHARLES

THE SECOND

BY

J. H. BURTON

1841

LIST OF VOTERS

FOR THE

Village of Holland Landing, 1876.

Consecutive Number.	Number on Assessm't Roll	NAME.	STREET.	Freehold or Tenant.	REMARKS.
1	1	Ayerst, Francis.....	Yonge	F	Baker
2	3	Beaton, Donald	W. Yonge	F	Farmer
3	4	Beaton, Beth	W. Yonge	F	Farmer
4	6	Boyd, Uriah	Yonge	T	Tanner
5	7	Boyd, James	E. Yonge	F	Laborer
6	9	Bell, Duncan	Dalhousie	F	Laborer
7	10	Bacon, Henry.....	Yonge	F	Mason
8	11	Brown, James.....	E. Yonge	F	Tanner
9	12	Beech, Robert.....	Yonge	F	Farmer
10	14	Chapman, Joshua....	E. Yonge	F	Brick Maker
11	15	Chapman, H. J	W. Yonge	F	Labourer
12	16	Corbier, Eli	W. Yonge	F	Shoe Maker
13	17	Dalton, Michael	W. Yonge	F	Labourer
14	18	Devanna, Patrick....	W. Yonge	F	Labourer
15	19	Doud, Redolpous	E. Yonge	T	Butcher
16	20	Dennis, William	E. Yonge	F	Tanner

Consecutive Number.	Number on Assesment Roll	NAME.	STREET.	Freehold or Tenant.	REMARKS.
17	21	Davidson, John	Yonge	T	Saddler
18	22	Dickson, Alexander..	Yonge	F	Agent
19	23	Donaldson, Matthew.	W. Yonge	F	Tanner
20	25	Ellerby, David.....	W. Yonge	F	Farmer
21	26	Ellerby, D. L.....	W. Yonge	T	Farmer
22	27	Ellerby, Thomas....	W. Yonge	T	Labourer
23	28	Evans, W. B. R.....	Yonge	F	Carpenter
24	94	Evans, James B.	E. Yonge	F	Farmer
25	30	Forhan, Thomas.....	Yonge	F	Labourer
26	31	Forhan, Patrick.	Queen	T	Labourer
27	33	Guinan, Charles.....	W. Yonge	F	Farmer
28	34	Gillrie, Henry	E. Yonge	F	Carpenter
29	35	Goss, T. R.....	Queen		Carpenter
30	36	Gray, James.....	E. Yonge	F	Well Sinker
31	37	Gray, Richard	E. Yonge	F	Well Sinker
32	38	Grant, Emanuel.....	W. Yonge	F	Farmer
33	39	Graham, Henry.	W. Yonge	F	Farmer
34	40	Grey, Thomas.....	E. Yonge	T	Teamster
35	41	Hutchinson, John....	E. Yonge	T	Tanner
36	42	Harding, William ...	W. Yonge	T	Labourer
37	142	Horlock, Rev. George,	Yonge	T	C. of E. Minister
38	44	Irwin, Isaih.....	W. Yonge	F	Gentleman
39	45	Johnston, Joseph.....	Dalhousie	F	Lime Merchant
40	46	James, Hervey	W. Yonge	T	Farmer
41	80	Jakeway, Aaron ...	Stayner	F	Gentleman

Consecutive Number.	Number on Assessor's Roll	NAME.	STREET.	Freehold or Tenant.	REMARKS.
42	47	Killough, John.....	W. Yonge	F	Labourer
43	49	Kirby, Henry.....	W. Yonge	T	Labourer
44	50	Kelly, John	E. Yonge	T	Farmer
45	51	Karr, John.....	W. Yonge	T	Farmer
46	52	Kitching, Fred... ..	Yonge	F	Clerk
47	53	Kayes, Thomas	Yonge	T	Mail Carrier
48	54	Kayes, John.....	E. Yonge	T	Agent
49	55	Latch, William.....	Toronto	F	Lumber Merch'nt
50	56	Larkin, Charles.....	W. Yonge	T	Labourer
51	57	Lane, William.....	E. Yonge	F	Cooper
52	58	Lloyd, Harry	Dalhousie	F	Tanner
53	59	Low, William.....	Olive	T	Tanner
54	60	Luck, William.....	Yonge	F	Wheelwright
55	61	Lane, John.....	E. Yonge	F	Cooper
56	62	Lane, George.....	E. Yonge	T	Mason
57	63	Little, John.....	Yonge	F	Tailor
58	64	Lloyd, Owen.....	W. Yonge	T	Clerk
59	65	Morris, Samuel.....	W. Yonge	F	Section Master
60	66	Murphy, John	E. Yonge	T	Labourer
61	67	Murphy, Thomas....	E. Yonge	T	Labourer
62	68	Martineau, Martin..	E. Yonge	T	Labourer
63	69	Murphy, John.....	W. Yonge	T	Tanner
64	75	Moore, Robert, senr.	W. Yonge	T	Farmer
65	75	Moore, Andrew.....	W. Yonge		Farmer
66	142	Mills, W. H		F	Gentleman
67	77	Moore, Robert jr....	W. Yonge	T	Labourer
68	80	Morgan, Stanley....	Yonge		Merchant
69	111	Morton, G. D.....	E Yonge	F	Gentleman
70	70	McKenzie, John jr....	Yonge	T	Tanner
71	71	McHale, John.....	Bradford	F	Labourer
72	72	McKenzie, William...	E. Yonge	F	Tanner
73	73	McKenzie, John senr.	E. Yonge	F	Gentleman
74	74	McClure, James	Yonge	F	Farmer
75	76	McCombo, James	Dalhousie	T	Labourer
76	139	McGenerty, Daniel..	Christopher	T	Labourer

Consecutive Number.	Number on Assesment Roll	NAME.	STREET.	Freehold or Tenant.	REMARKS.
77	140	McGibbon, John.....	Olive	F	Labourer
78	53	McGrath, C.....	Toronto	F	Gentleman
79	81	Nesbet, James.....	W. Yonge	T	Mason
80	82	Orton, Wm. M.....	Olive	T	Farmer
81	83	O'Brian, Daniel.....	Yonge	T	Labourer
82	84	Ough, John.....	Yonge	F	Mason
83	85	Pulford, George. ...	Yonge	F	Miller
84	88	Parson, Thomas.....	Stayner	F	Merchant
	120	Playter, R. B. C.....			
85	90	Rilley, James.....	W. Yonge	F	Farmer
86	91	Ross, D. S.....	W. Yonge	F	Gentleman
87	93	Robinson, Thomas...	E. Yonge	T	Farmer
88	95	Richardson, Wm.....	E. Yonge	F	Gentleman
89	97	Rabin, William.....	E. Yonge	F	Labourer
90	99	Rood, G. W.....	Yonge	F	Labourer
91	100	Robinson, William....	Yonge	T	Inn Keeper
92	122	Robinson C.....	Toronto	F	Gentleman
93	102	Sweezie, George.....	E. Yonge	F	Farmer
94	103	Sexsmith, Samuel....	E. Yonge	F	Cooper
95	105	Sheppard, Thomas...	Yonge	F	Merchant
96	106	Sheppard, John.....	Yonge	F	Inn Keeper
97	107	Shields Alexander....	E. Yonge	F	Farmer
98	108	Stephenson, Wm....	Ramsay	F	Farmer
99	109	Sutherland, Alex. ...	Dalhousie	F	Cooper

Consecutive Number.	Number on Assessm't Roll	NAME.	STREET.	Freehold or Tenant.	REMARKS.
100	110	Switzer, George...	E Yonge	T	Farmer
101	115	Tate, William.....	Yonge	T	Blacksmith
102	116	Turner, William...	Yonge	T	Shoemaker
103	117	Taylor, Dugald...	E Yonge	T	Tanner
104	118	Tobey, Warren....	W Yonge	T	Tanner
105	120	Thompson, Thos...	Yonge	F	Merchant
106	121	Thorne, W. H.....	Yonge		Merchant
107	122	Wernham, Charles.	W Yonge	T	Farmer
108	124	Willson, Albert....	E Yonge	T	Schoolteacher
109	125	Watson, C. W.....	E Yonge	T	Tanner
110	126	Warren, R. Stephen	Yonge	T	Tanner
111	127	Worsnop, Samuel..	Olive	T	Weaver
112	128	West, G. W.....	Yonge	T	
113	129	Worsnop, Thomas.	Yonge	T	Tanner
114	130	Willson, R. T.....	Yonge	F	Gentleman
115	131	Willson, Calvin....	Yonge	F	Baker
116	132	West, J. A.....	Yonge	T	Sportsman
117	134	Wright, William...	E Yonge	T	Farmer
118	135	Wright, Silas....	E Yonge	F	Farmer
119	136	Wright, Watson...	E Yonge	T	Farmer
120	137	Walker, John.....	E Yonge	T	Tanner
121	50	Willson, Amos.....	E Yonge	F	Farmer

CERTIFICATE.

I, **THOMAS SHEPPARD**, Clerk of the Municipality of the Village of Holland Landing, in the County of York, do hereby certify that the within list is a correct list for the year 1876, of all persons appearing by the last revised Assessment Roll of the said Municipality to be entitled to vote at Elections for Members of the Legislative Assembly; and that a copy of such list was first posted up in my office, at Holland Landing, on the twenty-fourth day of June, A. D., 1876; and I hereby call upon all electors to examine the said list, and if any omissions or other errors are perceived therein, to take immediate proceedings to have the said errors corrected according to law:

THOMAS SHEPPARD,

Clerk of Holland Landing.

HOLLAND LANDING, June 24, 1876.

o
o
ar
nt
ns
of
g,
all
ns
ro-

g.

