

OFFICE FOR RENT

1700 Square Feet. 26 KING STREET EAST. Excellent light, elevator, janitor, vaults & 20 sq. ft. coat partitions by self tenant.

PROBS—A few light scattered showers, but for the most part fair and a little milder.

The Toronto World

MONDAY MORNING APRIL 24 1916—TWELVE PAGES

10,000 SQUARE FEET

YONGE AND TEMPERANCE. Top flat, excellent light, passenger and freight elevators, reasonable rent.

CANADIANS HELD GROUND AND GAINED TRENCH AT ST. ELOI

Floods and Turks Again Hold Up the British Advance in Mesopotamia BRITISH TROOPS RECAPTURE LOST TRENCH ON YPRES-LANGEMARCK ROAD

BERLIN DECIDES STAND TOWARD UNITED STATES

Kaiser's Advisers Lost No Time in Making Up Their Minds. MAY BE A SURRENDER Remarks of Lokal Anzeiger Are Believed to Be Significant.

BERLIN, April 23.—Via Copenhagen to London, April 24 1.55 a.m.—The Imperial chancery, Dr. Von Bethmann-Hollweg, returned to Berlin this afternoon, which would seem to justify the assumption that the empire's responsible leaders at great headquarters, have finished consideration of the American note and reached a decision concerning Germany's reply.

The obvious deduction, according to the view here, is that there is nothing to prevent Germany from making certain concessions if the leaders feel that they can properly do so. Whether they do feel that they can go thus far is, of course, another question.

WAR SUMMARY THE DAY'S EVENTS REVIEWED

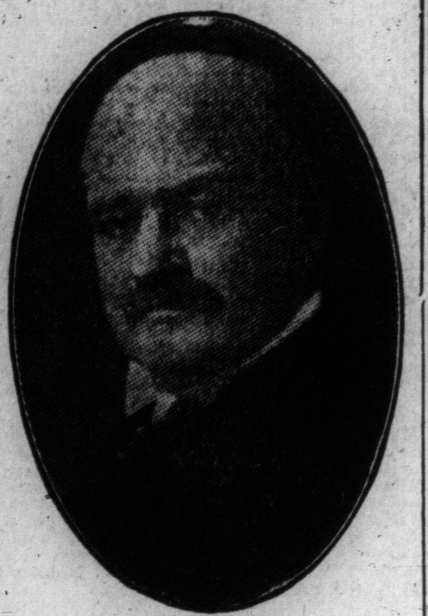
POLITICAL factors, as an outcome of the war, are still threatening disruption to the British Cabinet, for Lloyd George, it is said, has declared that he will resign his portfolio of munitions minister if old friends continue their censure.

The most familiar and recent of all is the chemical dye revelation. This industrial process was invented by an Englishman and allowed openly to be snatched away by Germany.

Besides these things many other revelations have been made and the people are rather disquieted. Of course, it has now been brought home to them that the Germans made secret war on the British Empire long before they made open war.

The trench on the Ypres-Langemarck road, which was lost by the British to the Germans on the night of April 19, has been recaptured by the King's Shropshire light infantry, and the former lines re-established.

DIED SUDDENLY



COL. A. D. DAVIDSON of the firm of Davidson & McRae, who died suddenly on Saturday night in Rochester, Minnesota.

LABORITES ARE GIVING BRITAIN FRESH ANXIETY

Opposition to Proposed Secret Session of Parliament Springs Up.

ATTACK BY GRIFFITHS

Prominent Unionist Would Oust Asquith and Give Lloyd George Reins.

LONDON, April 23.—The political truce arising out of the recent cabinet compromise is likely to be of very brief duration. David Lloyd George, minister of munitions, still remains the storm centre, while another point of difficulty appears to be the attitude of the Labor party towards the government.

(Continued on Page 2, Column 5).

SUDDEN DEATH COL. DAVIDSON C.N.R. OFFICIAL

Had Wide Business Interests in Railroads and Land Colonization.

BORN AT GLENCOE

Familiarly Known as "Man Who Made the Saskatchewan Valley."

Col. Andrew Duncan Davidson, lands commissioner of the Canadian Northern Railway for the past 12 years, died of internal troubles in the Rochester, Minn. Hospital, late Saturday night.

Railroad activities and lands colonization has been Col. Davidson's life work. During his career it is estimated he has sold over 15,000,000 acres of land, and is popularly known as "The Man Who Made the Saskatchewan Valley."

At the early age of 19 Andrew Davidson had wide business interests. Primarily he was a member of the firm of Davidson & McRae, General Agents, Canadian Northern lands, with offices in Toronto, Montreal and Winnipeg.

(Continued on Page 2, Column 4).

HUNS PLAY WILY GAME ON FRONTIER OF GREECE

Regiment of Which King Constantine is Honorary Colonel Stationed There.

PARIS, April 23, 3.10 p.m.—A despatch from Seres to the Athens newspaper Hestia says that the 88th Regiment of Prussian Infantry, of which King Constantine of Greece is an honorary colonel, is among the troops in the Petritsch sector on the Greek frontier, according to the Havas correspondent at Athens.

FRENCH AIRMAN BOMBS BULGARIAN CAPITAL

Retaliatory Visit Paid to Foe for Attacking Greek Village.

PARIS, April 23, 3.10 p.m.—A despatch from Seres to the Athens newspaper Hestia says that the 88th Regiment of Prussian Infantry, of which King Constantine of Greece is an honorary colonel, is among the troops in the Petritsch sector on the Greek frontier, according to the Havas correspondent at Athens.

BIG FOE FORCE EMPLOYED FOR VERDUN FIGHT

Thirty German Divisions Used in Two Months' Battle.

ENEMY BEATEN AGAIN

Two Successive Attacks Were Broken Up on Mort Homme Lines.

LONDON, April 23, 6 p.m.—Further reports by the British to advance on the Tigris towards Kut-el-Amara have been futile, the failure of an attack this morning on the Turkish lines at Sannaiyat, being attributed in an official statement issued this afternoon largely to flood conditions, which necessitated an advance over a contracted front.

Two violent attacks by the Germans, launched in succession against the French positions between Le Mort Homme and Bethincourt stream, west of the Meuse, were repulsed Saturday by a curtain of fire and machine gun volleys.

By a surprise attack in the Avocourt wood the French captured several posts on the road and took a few German prisoners. The Germans were repulsed last night in an attempt to capture one of the French machine gun posts near Vauquois. This gun has caused them particular inconvenience. The artillery was intermittently active to the east of the Meuse and in the Woivre. A French aeroplane squadron dropped twenty shells on German bivouacs near Vauquois and Villers-Marmennes, northwest of Verdun, early Saturday morning.

TEN GERMAN PLANES BOMBED OSEL ISLAND

Berlin Asserts Attack on Russian Air Station at Papenhelm Succeeded.

BERLIN, via London, April 23, 9.59 p.m.—The following official communication was issued today:

"Ten German aeroplanes on Saturday attacked the Russian air station at Papenhelm, on Osel Island, in the Gulf of Riga, and dropped forty-five bombs. Very good effects were observed."

"A Russian aeroplane was compelled to land. All the German aeroplanes returned undamaged, despite a violent fire against them."

A Petrograd official statement, issued last night, merely says: "Enemy aeroplanes flew over Dvinsk region."

THREE ONTARIO BATTALIONS IN ST. ELOI SALENT FIGHT

REPAIRED BROKEN WIRES UNDER FOE'S HEAVY FIRE

Military Medal Awarded Sgt. W. S. Lawson of the Eleventh Battery—Gunner Who Aided Mortally Wounded.

OTTAWA, April 23.—A cable from a Canadian official eye-witness says: "Sgt. W. S. Lawson of the 11th Battery, C.F.A., has been awarded the military medal. On March 16 when the area of our first infantry brigade was being subjected to a severe bombardment the telephone wires of our 11th Battery were frequently cut by bursting shells."

TURKS SAVED FROM DEFEAT BY HEAVY FLOODS ON TIGRIS

Owing to Condition of Ground, British Could Not Hold Gains in Attack on Sannaiyat Position.

LONDON, April 23, 6 p.m.—Further reports by the British to advance on the Tigris towards Kut-el-Amara have been futile, the failure of an attack this morning on the Turkish lines at Sannaiyat, being attributed in an official statement issued this afternoon largely to flood conditions, which necessitated an advance over a contracted front.

THOUSAND LIVES WERE LOST WHEN A CHINESE SHIP SANK

Steamer Came into Collision With Chinese Cruiser During Thick Fog—Only Twenty-nine Were Rescued.

SHANGHAI, April 23.—Over a thousand soldiers and men of the crew of the steamer Hsin Yu were lost when the steamer sank after a collision with the cruiser Hai-Yun Saturday evening south of the Chusan Islands.

By a surprise attack in the Avocourt wood the French captured several posts on the road and took a few German prisoners. The Germans were repulsed last night in an attempt to capture one of the French machine gun posts near Vauquois. This gun has caused them particular inconvenience.

STRONG TURK POSITION CARRIED BY RUSSIANS

Czar's Army Makes Progress in Ashkala Region in Hard Fighting.

ITALIANS MAKE GAINS IN UPPER CORDEVOLE

Trenches on Carso Also Taken by Austrians in Big Fight.

LAND MEN NEAR PORT MUCH BOOTY CAPTURED

Fierce Enemy Attack Repulsed in Sugana Valley.

TEN GERMAN PLANES BOMBED OSEL ISLAND

Berlin Asserts Attack on Russian Air Station at Papenhelm Succeeded.

Twenty-first, Nineteenth and Eighteenth Withstood Terrific Bombardment and Held Positions Amid Mud and Water—Many Fine Instances of Individual Heroism.

OTTAWA, April 23.—Desperate fighting on the St. Eloi salient participated in by three Ontario battalions, the 21st Eastern, 19th Central and 18th Western, occurred during the week, April 11-18. The Canadian representative at the front told in his weekly communique of battles under unprecedented circumstances, in which the Canadians held their ground and in addition occupied a portion of an enemy trench.

"Canadian General Headquarters in France, via London, April 23.—The struggle for position in front of St. Eloi was again the dominant interest on the Canadian front. The still weather of the previous week gave way to high winds, brilliant sunshine to a sky overcast with clouds. Occasional downpours of rain added to the burden of a water-logged soil. By day and night the German guns pounded the narrow confines of the St. Eloi salient, the volume of their fire swelling ever now and again into bombardments of extraordinary violence.

TRENCH LOST TO FOES RECAPTURED BY BRITISH

Successful Night Raid Carried Out Against German Lines.

SOME PRISONERS TAKEN

Foe's Dugouts Bombed and Casualties Inflicted on Enemy.

LONDON, April 23.—Despatches of Sir Douglas Haig from the front this week-end announce that the King's Shropshire Light Infantry has recaptured the trench which the Germans had taken on the Ypres-Langemarck road on the night of April 19, and had re-established British lines on their original foundation.

British artillery getting the range of a German working party in front of St. Eloi speedily dispersed it today. There was the usual mining and artillery work on the whole front. The German admission of this loss is thus made: "German forces were compelled to evacuate newly won trenches on the Langemarck-Ypres road on account of high floods, which made the consolidation of the positions impossible."

MET WITH ACCIDENT ON WAY TO TORONTO

Lieut.-Col. George W. Bruce, commanding officer of the 181st Overseas Battalion, of Brandon, Man., while travelling from Brandon to Toronto met with an accident at Chapeau, Ont., that resulted in the death of his wife.

DINEEN'S FUR STORAGE

Send your winter furs to storage early. They will be of no further service this season. Our cold-air storage system prevents any possibility of moth or deterioration. Furs will be returned to you for next winter's wear, improved in gloss. Dineen's, 140 Yonge street. Phone Main 6822 and furs will be called for.



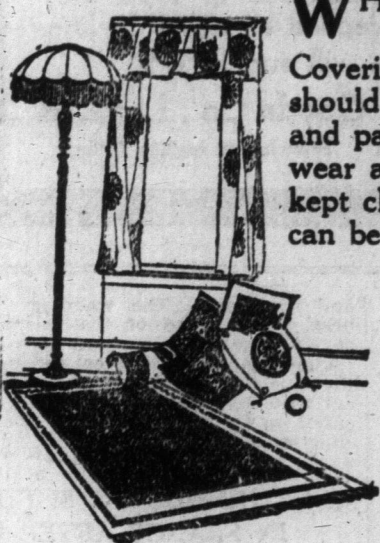
STORE OPENS AT 8.30 A. M. AND CLOSES AT 5 P. M.

# EATON'S DAILY STORE NEWS

Four "C.D.V." (half cabinet) photos, size 5 1/2 x 4 1/2 inches, for 25c—New Photo Gallery, Camera Section, Main Floor.

## Helping You Economically Furnish Your Summer Home

### Summer Cottage Floor Coverings That Are Easily Kept Clean



WHEN SUPPLYING THE SUMMER COTTAGE with Floor Coverings, the foremost considerations should be for coolness and cleanliness, and particularly suitable for summer wear are those light, reversible, easily kept clean grass and fibre rugs that can be used in any room in the cottage as well as on the verandah.

The art fibre rugs are in plain and fancy weaves. Some with plain centres and pretty end borders, others with quiet mottled centres and narrow borders all around. One side plain. Colors are blue, green and light drabs.

- Size 30 x 60, at... 1.50
- Size 36 x 72, at... 2.25
- Size 6 ft. x 9 ft., at 6.00

- Size 6 ft. x 12 ft., at 8.00
- Size 7-6 x 10-6, at... 9.00

REVERSIBLE GRASS RUGS, in fine twisted weaves in pretty stencilled designs, in browns, grey, blue or green. These rugs can be exposed to the severest weather without injury. Size 30 x 60, at .95; 6 x 9 ft., at 4.50; 4-6 x 7-6, 2.75; 8 x 10 ft., 6.50.

RAG RUGS, in cool, refreshing colorings that give daintiness to bedrooms and dressing-rooms. Blue, green, helle, brown, rose, etc., from pretty shades with plain grounds and fancy chintz borders, to the old colonial styles in beautiful mixed colors.

- Size 24-inch x 36-inch... .85
- Size 27-inch x 54-inch... 1.25
- Size 36-inch x 63-inch... 2.35
- Size 4 x 7-6... 4.50
- Size 6 x 9... 7.75

SCOTCH WOOL RUGS, in big range of colors for almost any room. Sizes vary from 6 ft. x 9 ft. to 12 ft. x 15 ft. 6 in.

- 7-6 x 9-0... 7.50
- 10-6 x 12... 14.00
- 9 x 10-6... 10.50
- 12 x 13-6... 18.00
- 9 x 12... 12.00

BRUSSELS RUGS that are easily kept clean in large selection of designs in many color combinations. Sizes 6-9 x 9 range 11.00, 11.75 and 15.50; 9 x 10-6 range 17.00, 18.50 and 24.50.

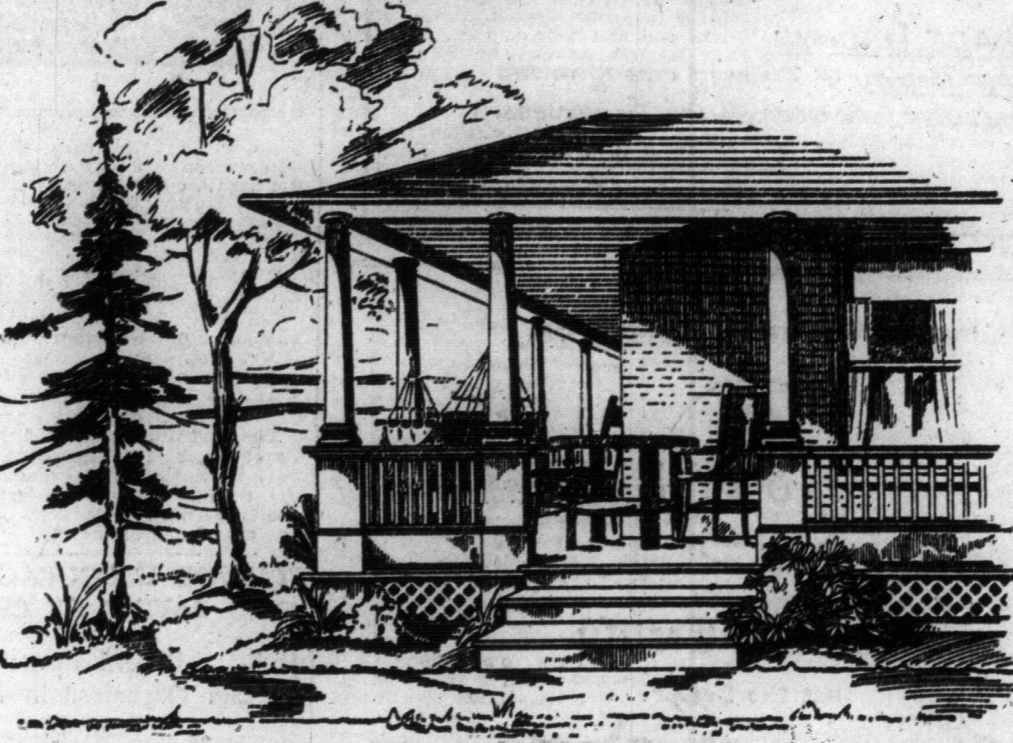
Other sizes in proportion. BRUSSELS CARPET, 27-in. wide, with borders to match, for making odd-sized rugs or for halls and stairs. Per yard... 1.15

HEAVY PRINTED LINOLEUMS, in neat designs and fresh clean colorings. For kitchen and halls; 2 and 4 yards wide. Square yard, .45 to .65

INLAID LINOLEUMS with same design and colors all through ensures pattern showing till worn out. Per square yard, 1.00, 1.25, 1.45

JAPANESE MATTING, woven from long straws that are durable and strong. An inexpensive covering for almost any room or hallway. Plain or fancy colors, at .20, .25 and .35 yard.—Fourth Floor.

The weather now is fine enough to comfortably enjoy that healthy semi-outdoor life that a summer cottage affords, and on this page you'll find suggestions for the necessary equipment of a cottage, big or small.



### Artistic Furniture for the Verandah of the Cottage or Bungalow

In our immense selection of Verandah and Summer Cottage Furniture you can economically choose pieces for the simple bungalow or for the elaborate summer home.

We control the sale of "Old Hickory" Furniture in Toronto, and you'll discover some splendid values among the selection of not only "Old Hickory," but of Verandah Furniture of every material.

- Old Hickory Arm Chair, with high spindle back, double woven splint seat, all well braced. Price 2.50
- Rocker to match... 5.25
- Old Hickory Arm Chair, in quiet old style, with woven back shaped arms, woven seat. Price... 4.25
- Arm Rocker to match... 4.75
- Willow Arm Chair, in buff finish with strong frame... 5.25
- Folding Arm Chair, with heavy frame, in natural finish, and heavy white duck back and seat. Price... 2.50
- Folding Reclining Chair, with natural finished frame, high back and striped canvas seat. Price... 1.25
- Price with Foot Rest... 1.50
- Folding Canvas Stools, with brown duck top... .80
- Arm Chair for verandah, in red, natural green, with slat back and double woven cane seat. Price... 2.10

- Verandah Chairs, in natural, green and red finish, with slat back, double woven cane seat and double stretcher. Price... 1.00
- Rocking Chair to match... 1.10
- Folding Table, in natural finish, with round top, 32 inches in diameter, shaped rim. Price... 2.75
- The camp cot illustrated below is made with a strong hardwood frame, folding head rest and legs, woven wire fabric spring. It is 2 feet 6 inches wide and 6 feet long. Priced at... 1.85
- Another Folding Camp Cot with hardwood frame and heavy canvas top, 24 inches wide and 6 feet long, is priced at... 1.55

- Army Service Folding Cot, with steel and wood frame and heavy canvas top, 30 inches wide, 6 feet 2 inches long, folds up into small space. Price each... 8.00
- Folding Steel Cot Bed, in oxidized finish, with link weave spring, folding head and foot ends, size 2 feet x 6 feet. Price... 8.75



### Light, Airy Window Curtains for Warm Weather

Nottingham Lace Curtains—2 1/2 yards long by 45 inches wide; white only; plain, floral and allover effects. Price 65c per pair.

Scrim Curtains, made of fine quality mercerized materials, trimmed with pretty lace insertion and hemstitching. Styles for any window; white or cream; 2 1/2 yards long by 36 to 40 inches wide. Prices from \$1.50 to \$4.50 per pair.



Madras Casement Cloth—36 inches wide, in colored, floral and conventional border designs. Per yard... 12 1/2

Art Cretonne—30 inches wide, in colored, floral, stripe and conventional effects. Special, per yard... 16

Nottingham Sash Nets—30 inches wide, in a variety of patterns, finished with scalloped and knitted edges. White only. Per yd. 11

White Curtain Muslins—30 inches wide. Allover patterns such as crossbars, checks and coin spots, woven on strong grounds. White only. Per yard... 12 1/2

Colored Curtain Scrim—36 inches wide. Floral borders in red, yellow or green. Per yard... 17

—Fourth Floor.

Attractive Pictures ONE OF THE ROOMS in the picture galleries on the fourth floor is devoted entirely to an interesting display of novelty pictures of all kinds—Attractively colored or sepia finished subjects, including comical pictures of all sorts, dogs, horses, fishing and camping scenes, cowboys, Indians, large mottoes with raised letters, and figures, in colors, etc. Prices 85c to 5.00

PANEL MOTTOES, 12 inches across, four inches deep, with painted mottoes. FRAMED MIRRORS, size 10 x 14, in polished wood or white frames, each... 1.25

—Fourth Floor.

### Flash Lights and Lanterns

A FLASHLIGHT is an absolute necessity around a summer cottage, especially when canoeing or tramping along a path at night.

If your preference is a pocket lamp we have them in many styles and designs, some with nickel cases at each .85, .95 and .75.

Larger Flashlights in tubular style are made of black fibre with nickel trimmings and fitted with strong battery and lamp—three sizes—at each, .75, 1.00, 1.25, 1.65 to 4.50.

A very handy and convenient light for summer cottages is the battery lantern, fitted with ordinary dry cell, and glass lamp shade. Price, each, 1.50 and 2.00.

Where the cottage is away from electric power one of our special domes for oil is an excellent substitute. Has appearance of an electric light and is in brass finish with amber glass. Each... 10.50

—Basement.

### You'll Not Forget the Hammock

It is necessary that you get a strong one, for it will be in constant use almost all the time.



We show a full sized colored hammock with pillow and valance that will give good wear. Price, each, 1.25

Other Hammocks in pretty stripes made of closely woven yarns with throw-back pillow, valance and concealed head spread, are priced at each... 2.25

The couch hammock is most comfortable and most accommodating hammock made. It has angle iron stand, canopy top, soft khaki cushions and strong easy-working springs. Price... 12.50

—Fifth Floor.

### Pennants to Make the Cottage Attractive and Cosy Looking

Brightly colored pennants with colleges and Toronto sewn to soft felt materials. Sizes 11 x 22. Each... .80

FELT CUSHION FORMS, with fancy designed tops that are new and attractive; some with fringed ends. They are strong and durable for cottage or canoe use, and priced, each... 2.00

—Fifth Floor.

### Get the Lawn in Shape for Tennis and Croquet

Flat, smooth ground is essential to fully enjoy a game of tennis or skillfully play a round of croquet. The ground should be rolled now, and you can get an easy-rolling steel roller in the Basement that will either hold sand or water for ballast, at... 9.75

TENNIS NETS are to be had on the Fifth Floor, at \$3.00 and \$4.00.

Tennis Racquets at... 1.85, 1.75, 2.50, 5.00

Tennis Balls. Regulation Practice Ball, .25; Variety, .35; Tournament, .40.

Tennis Markers, 2.25 and 3.00. Presses, .45 and .65.

LAWN CROQUET SETS, in wood box, complete with posts and hoops, four-player sets with 5" mallets... 1.15

Six-player Sets, with 5" Mallets... 1.50

Eight-player Sets, with 5" Mallets... 1.95

Four-player Sets, with 8" Mallets... 2.75

—Fifth Floor.

### A Lawn Swing or Hammock Cradle for Kiddies

LAWN SWINGS, made of hardwood and finished in red with varnished seats.

Two Passenger... 4.50 Four Passenger... 5.95

Extra heavy bolted swing for four passenger... 7.50

BABY CRADLE HAMMOCKS... .80, 1.25

THE GLIDING SETTEE, with striped awning and removable table is a splendid furnishing for any lawn. It has an easy, gliding motion. Comfortable seats and adjustable back. Price... 16.50

### Inexpensive Wall Papers for Any Room in the Cottage

WHEN FURNISHING a summer cottage, the first thing to do is to find out if any room requires Wall Paper.

If it does, take the measurements, select the paper you desire from our large assortment on the fourth floor and let our man put it on; or better still, we will send a man to take size of room and hang the paper if you desire.

Here are several lines of Wall Paper specially adapted for summer cottages, being bright, durable and exceptionally low priced.

- Canadian and American Papers, in big variety of colors and designs suitable for halls or rooms.
- Wall and ceiling, single roll, 10; 9" borders, yard, .8; 18" frieze, yard, .4
- White and cream moire ceiling to match any side wall paper. Special value at, single roll... .5
- English and American made varnish tile papers for bathrooms, kitchens, pantries and halls. Blue, green, tan, fawn and grey colorings. Price, per single roll... .20

CANADIAN PAPERS, in gilt and glimmer effects for bedrooms, halls, parlors and dining-rooms. Big choice of colorings and designs. Single roll, 7; 9" border, yard, .2; 18" frieze, yard, .8.

### Dinner, Tea and Toilet Sets Specially Adapted For Cottage Use

ALL THAT TROUBLESOME packing of dishes and danger of being broken while en route and loss of good china that is usually taken from city to summer home can be eliminated by the purchase of our specially selected cottage dinner, tea and toilet ware.



The cost of these sets is surprisingly low and each set is carefully packed for delivery to your city home, all ready for shipment to the summer resort, and if your purchase amounts to \$10.00 or more we will deliver same free of charge to any station in Ontario, Maritime Provinces or Quebec.

The Dinner Set comprises 94 pieces of hard-bodied, durable white English semi-porcelain, with green trellis and panel effect border band decoration. Included in the set are 12, each, bread and butter, tea, dinner and soup plates; 12 fruit plates; 12 tea cups and saucers, 2 platters, cravy boat and stand, salad dish, 2 covered vegetable dishes, cream jug, 94 pieces, 8.25

The Tea Set is made of English China in dainty rosebud pattern with gold line edges and handle, just the thing for verandah and lawn afternoon tea. Included are 12 teacups and saucers, 12 teaplates, 2 cake plates, stop bowl and cream jug, making 40 pieces altogether, for the exceptionally low price of... 4.50

The Toilet Set is made of English porcelain-ware in either pink or blue green decoration. It consists of a large and small jug, large basin, covered chamber, mug, tooth brush holder and 3-piece soap dish. Full set of 10 pieces... 2.95

—Basement.

### For Musical Entertainment the Grafonola is Ideal

IMAGINE HOW ODD and lonesome a summer cottage would be without music and what a splendid entertainer is the Grafonola. It plays with pleasing effect and clearness any kind of record from the light popular songs, side-splitting humorous selections to the stately and deep classics, and it is priced low enough to be within the reach of all, at 20.00, 33.00, 45.00, 50.00 and 65.00.

The Wonderphone would give many happy hours of fun, too, for it plays all the 10-inch records with surprisingly strong effect and is light and remarkably low priced at... 8.75

Our Portable Organ at .35.00, and the small parlor Organ at 45.00 supply a splendid substitute for the piano.

—Fifth Floor.

### Utensils for the Summer Kitchen

- Granite Double Boilers, 45, 60, 75.
- Mixing Bowls, 16, 23, 30.
- Water Buckets, 55, 65, 75.
- Dippers, 20.
- Covered Kettles, each, .80, .85, .40, .55, .85.
- Covered Kettles, 70, 85, 1.00, .85, .40, .65, .85.
- Preserving Kettles, each, .80.
- Teakettles, each, .50, .60, .65, .75, .85.
- Milk Pails, 25, 35, 50.
- Bread Pans, 22, 25.
- Pudding Pans, 10, 12, 14, 15, 17.
- Dish Pans, 35, 40, 50, 60, 70.
- Sauce Pans, 12, 14, 18, 21, 23, 25, 30.
- Covered Saucepans, 22, 25, 28, 32, 40, 50.
- Water Pitchers, 35, 40, 55, 75.
- Coffee Pots, each, .85, .95, 40, 45, 50.
- Teapots, 35, 35, 40, 45, 50.
- Potato Pots, 65, 75, 85.
- Basting Spoons, each, 8, 9, 10.
- Stove Pots, 55, 65.
- Steel Fry, 22, 25, 30.
- Small Fry Pans for eggs and bacon, each, 8, 10, 15, 18.
- Set of Irons, 58, 65.
- Sheet Iron Roast Pans, 10, 12, 15, 18.
- Sheet Iron Bread Pans, 7, 8.
- Brooms, 35, 45, 50.
- Dust Pans, 15, 20.
- Clothes Lines, 20, 25, 35.
- Clothes Pins, 6 dozen, 10.
- Bake Boards, 60.
- Rolling Pins, 20.
- Set of Scales, will weigh to 25 lbs., 3.00.
- Scrubbing Brushes, 5, 10, 15, 20.
- Tin Pie Plates, 5.
- Lanterns, 45, 75.
- Bread Boxes, 60, 75.

—Basement.

### First-Aid Cabinets

FIRST AID CASES, in sanitary metal boxes that can be fastened to the wall, including hand book. Prices, 1.25, 4.00 and 8.50.

WHITE ENAMEL CABINET with drawer and cupboard, containing first aid equipment of all kinds and a hand book. Price 10.00

OAK CABINET with double drawer and door. Price... 6.00

THE T. EATON DRUG CO. Main Floor—James St.

# T. EATON CO LIMITED

### HIGHLANDERS WON IN COMPETITION

Ninety-Fifth Battalion a Close Second in Saturday's Events at Riverdale.

#### OFFICIAL DECISIONS

Younger Units Also Show Up Well in Long Distance Hike.

Official decisions in connection with the marching competition held on Saturday at Riverdale Park, have just been announced as follows:

The 92nd Highlanders won marching competition with 95th Battalion a close second.

Lieut. Col. Campbell, inspector of overseas troops and Lieut. Comdr. D.L.O., 2nd division, who judged the marching competition, are loud in their praises for all the units which took part.

Judging was based on, 1st, march discipline, i.e. dressing of fours; 2nd, on physical fitness and style; 3rd, on judgment used by O. C. companies during the march regarding speed affecting time of arrival.

All units arrived at the rendezvous in excellent fettle. The older units, of course, showed the result of their longer training by their easy, graceful swing and evident freshness and fitness to go the distance without fatiguing themselves.

The 92nd Highlanders had a slight edge on the 95th Battalion, and it was evident that the lessons learned at Niagara camp last summer and on the long hike from Niagara to Toronto in November, by the former, had not been without results. There was not much to choose between these two battalions.

The younger units showed up remarkably well. The 123rd (Grey Grenadiers) Battalion and the 134th (48th Highlanders) Battalion being singled out for special commendation.

The spirit-boosters and zeal which prompted the officers and men to give a holiday for the purpose of fighting the laurels for their respective units is favorably commented upon by the headquarters staff, Exhibition camp.

#### CONVALESCENT SOLDIERS CELEBRATE ST. JULIEN

Attend Easter Services in Auditorium and Witness Return of More Invalided Heroes.

Easter Sunday was a day of special events at the Military Convalescent Home, College street, the soldiers there witnessing the arrival of another contingent of war heroes in the morning; attending Easter church service in the auditorium; celebrating the anniversary of the battle of St. Julien by decorating the building and having a special dinner; and by having a visit from Senator Loughheed, in the afternoon.

The Easter service was held at 9.30 in the morning, and the sermon preached by Rev. R. J. D. Simpson of Carlton Street Methodist Church. Owing to the rainy weather the band concert to have been given on the lawn, was postponed. A concert is being arranged for next Sunday, and will probably be given by the band of the 92nd Highland Battalion.

#### WELLAND CANAL REOPENS.

PORT COLBORNE, April 23.—The Welland Canal opened this morning. The steamers Davidson and Lambert were the only passengers down. The steamers Doris and Edmondson left here tonight for Port William.

### Rooms that induce Repose



AFTER the bustling grind of the day, and you come home to seek repose, why deprive yourself of the quiet satisfaction of rooms beautified with

#### PEDLAR'S PERFECT METAL CEILINGS AND WALLS

Start first with your own room. Transcend the dreariness of walls whose pleasant restfulness calls you to leave care and the world behind. A room you'll become even more attached to as the years go by. Pedlar's Ceilings and Walls are easily put on over plaster or wood; the joints cannot show. Can be painted any tint; always clean and sanitary. Over 2000 styles and period designs.

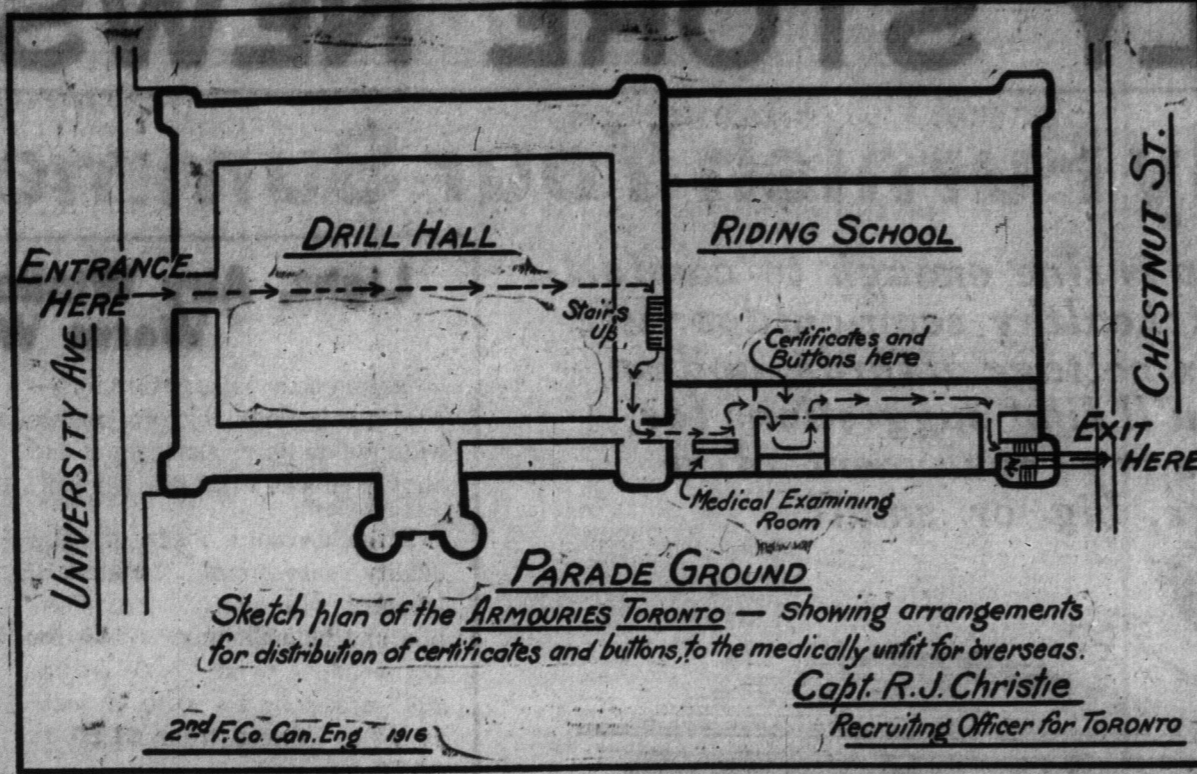
Write for the new Ceiling Catalogue T.W.

#### THE PEDLAR PEOPLE LIMITED

(Established 1861)

Cor. College and Markham Sts., Toronto Branch, Montreal, Ottawa, London, Winnipeg, Executive Offices and Factories, Oshawa, Ont.

### CERTIFICATE OF REJECTION



Sketch plan of the Armouries Toronto — showing arrangements for distribution of certificates and buttons, to the medically unfit for overseas. Capt. R.J. Christie, Recruiting Officer for Toronto.

### ISSUE BUTTONS ON SUNDAY NEXT

"Rejected" Badges Will Be Distributed to Those Physically Unfit.

#### CLOSE CHECK ON EACH

Applicants Must Apply in Person—No Duplicates Issued.



Acting on a suggestion made by Capt. H. B. Wood, paymaster of the 170th B. A. T. Co., that a rejection button be given to those who had applied for overseas service and thru physical unfitness had been rejected, Capt. R. J. Christie, O. C., Toronto Recruiting Depot, got in touch with Stone, Ltd., and several sketches were submitted, and after considerable thought the button which is being issued is the result, and to those that receive it, it should be just as honorable as being in khaki as the letters A. R. show that they had the interest of the country at heart, and applied, but were rejected. So that there will be no interference with the work of recruiting it was decided to issue the buttons on a Sunday, as there is no doubt that there will be a great number, as it is intended to cover all those who have been rejected since the depot opened August 16, 1915, and have received unfit certificates.

Sunday, April 30, will be the first day, commencing at 9 a.m., at the armouries. Applicants will enter the armouries by the University avenue entrance and will be directed by an orderly with a red sash to the stairway leading to the medical room, as per plan shown in accompanying diagram.

Get Another Chance. The plan is to give anyone who has been rejected and who since has developed so that they are now fit for overseas, the opportunity of being re-examined and enlisted, while those that are obviously unfit will be given their button and a new certificate. The buttons are numbered and the certificate number will correspond, and if either is lost a duplicate cannot be issued.

The buttons are issued with the twofold object in view, to facilitate recruiting so that the recruiting officers will not have their time taken up by stopping those who have been rejected, and the time of these men will not be taken either.

Both the buttons and the certificates are registered and any attempt to procure one dishonestly or wear it, if it will be closely investigated and the matter followed to the end. The applicants must show their certificates which they have at present, and no buttons will be issued on the first day except to those who have these certificates, as the medical officers will have all they can do to handle the number of those who will apply on the first day. The hours will be 9 to 12 a.m. and 2 to 6 p.m. Further dates will be announced in the papers as to the issuance of these buttons.

Capt. Christie is anxious to see that all who apply on this date get their buttons and certificates, and this can be facilitated by getting into line and maintaining order throughout. Have your certificates ready, while some men may have more than one rejection certificate, owing to the close check that is being kept, only one button can be secured by each man. Applicants must apply in person.

General Logie, G. O. C., has authorized the button and certificate, and it must be produced on the request of an officer or police constable if in their opinion it is being worn by other than the proper owner.

#### CHEESE MARKETS.

COWANSVILLE, Que., April 23.—At the meeting of the Eastern Townships Dairyman's Exchange here today, 12 factories offered 788 packages of butter; 11 factories sold at 85%; one factory unsold.

ST. HYACINTHE, Que., April 23.—At the inaugural meeting of the St. Hyacinthe Dairy Board today, 100 packages of butter were boarded, and sold at 80c; 100 boxes of cheese were boarded and sold at 17c.

#### CHARGED WITH DEFRAUDING.

HAMILTON, April 24.—Gertrude Bar of Stratford was brought back here on Saturday by Detective Bleakley to answer to a charge of false pretences preferred by the Hamilton Patriotic Association. It is alleged that she obtained \$12 from the association with the intent to defraud.

Issued by The Toronto Recruiting Depot



This is to Certify that the Bearer

James Smith

has applied, been examined and rejected

Special Service

TALL—SHORT—DARK FAIR. Blue Eyes

EXAMINED April 17th

W. J. Allison, M.D.

### News in The Sunday World

British forces operating against German East Africa have won further successes, capturing Umbwege and Salanga.

Germany has resumed their offensive against Verdun, but failed to gain additional ground.

Berlin official statement admits British made gain near the Ypres-Langemarck road.

Russians are continuing the pursuit of the retreating Turkish forces near Trebizond.

An aeroplane of the entente allies dropped two bombs on Sofia with effect.

London. An order in council has been passed prescribing very strict regulations to prevent publication of proceedings of secret sessions of the parliament.

The Milan correspondent of The Daily Telegraph says the Hungarian papers are making a cry for peace.

United States. Von Bernstorff will be asked to explain the papers seized by the state department from Von Igel, former secretary to Von Papen.

Harry Newton, a former munitions worker of St. Catharines, Ont., has been arrested in New York for an alleged agreement to blow up a plant and kill J. P. Morgan.

A Berlin cable says that the answer to American's latest note will likely be delayed by more parleys and requests for further information on certain points.

Ottawa. Dr. W. F. King, Canada's chief astronomer, is seriously ill and confined to his bed.

Col. Allison, who figures prominently in the Kite charges, will arrive in Ottawa today, ready to appear before the royal commission.

Local. While crossing the street at Elm Grove avenue and Queen street, Saturday afternoon, Mortimer Mills was knocked down by a motor car and seriously hurt.

The colors were presented to the 81st Battalion on Saturday morning by the City of St. Catharines.

The first anniversary of the battle of Prores was celebrated at Riverdale Park on Saturday afternoon, when 15,000 people gathered to witness the sporting events pulled off by the various battalions in the city.

ITALIANS ENCOURAGE SAVING BY CHILDREN. Mutual Benefit Insurance System Organized in Public Schools.

ROME, April 23.—A mutual benefit insurance is being organized in the public schools of Italy for the purpose of encouraging saving and foresight among the children. The government has voted a \$10,000 a year subvention to the fund, to which the children each contribute two cents a week. The immediate usefulness of the system, aside from its purely educative value, lies in that payments are made in case of accident, sickness or death. So far the system applies to children between the ages of six and twelve years, but after they leave school they may continue to enjoy its benefits by becoming members, if they belong to the laboring class, of the National Provident Fund for Sickness and Old Age, or, if they are not workmen, of the National Popular Pension Insurance. The results of the system are reported thus far as being most satisfactory.

A GREAT RECEPTION. Private Harold Swain, soloist of the 48th Highlanders, was given a great reception at the Massey Band Concert in the armouries on Saturday night. He sang the popular march song "We're From Canada," accompanied by the full band of the Highlanders, under the direction of Bandmaster Slater. The large audience applauded enthusiastically.

MAUDE EBURNE. Feature Comedienne with "A Pair of Queens," Alexandria.

### BRITISH STEEL HELMET BEST HEADPIECE YET

Fifty Thousand a Month Manufactured for the Soldiers.

PRESENTS SMALL MARK. Improvements Made on French Iron Cap by Designer.

LONDON, April 23.—The steel helmet which is being manufactured for the British soldiers at the rate of 50,000 a month, is believed by the British authorities to be the best designed and most serviceable headpiece that can be found.

The British helmet is a round cap of the hardest steel, with a narrow "lip" back and front, and designed with a much lower pitch than the French type. It is, moreover, perfectly smooth, having no flutings or projections for bolts or fragments of shrapnel to strike against, while its low pitch presents the smallest possible target for a direct hit from any direction. One of the drawbacks to the French helmet, owing to its higher dome, is that the collection of air in the top of the helmet produced an uncomfortable coolness, while at the same time the helmet was such a tight fit that the metal pressed unpleasantly on the head.

These drawbacks have been avoided in the scientifically designed headpiece produced under the supervision of Lloyd George. Ingenious devices have been employed to secure both a good fit and a comfortable one, and to avoid any distress to the wearer. Inside the dome of the helmet are fixed a number of rubber studs, so placed as to take the shock of a blow struck from any direction. They come between the helmet and its double lining of felt.

ON THE BRITISH FRONT, France, April 23.—The contact which the Indian troops have with western life, religion and customs during their stay with the British expeditionary force in France may have a far reaching effect on the religion and habits of the people of India.

A correspondent of the Associated Press was informed by British officers that the Indian troops were so impressed with the superiority of the customs observed in France that many were preparing to return and settle here after the war. It will be comparatively few of the Indian soldiers, of course, who will come back and it is from those who remain in India that the influence on their own people is expected to emanate. How great a change the persuasion of those soldiers with advanced ideas will work on the people as a whole remains to be seen.

DEATH OF JAMES BRAUND. Well-Known in Toronto Newspaper Circles—Wife Survives Him.

James E. Braund, who died yesterday morning at his residence, 126 Brunswick avenue, after a lingering illness, was well known in Toronto newspaper circles, being employed on the staff of The Mail and Empire as foreman of the mailing department.

The late Mr. Braund was appointed foreman at the time of the amalgamation of The Empire and Mail newspapers, in 1913, and held that position until he became ill. He was a member of the Masonic Order and of the Toronto Mailers' Union. His wife survives him.

The funeral will take place tomorrow afternoon, from his residence.

WOMEN FOR I. Time Com Will Hav From PUBLIC M Sir Edmund Godfrey Two opin tion of emplo before the we men, each of and because, ordinary posi ditions, to employ to employ. A few days, the women? they must no preparing for most inewita time when ex cessity, have women in cur "Be ready, the country? to keep up, thing they w must train yo women." Sir Edmund patriotic pe Alexandri, it is now per must be emp before the w have done ou who can work tain, women, ready to go on We in this co touched. Emp us women, to women here b coming forw Many i According Women's Emp number of wa ed to their w needed that i sources the su that many w allied the ne

## MEN WANTED

—BY—

### The Toronto Railway Company

FOR THE POSITIONS OF

## Motormen and Conductors

Preference will be given applicants in the following order:

- 1.—To soldiers who have returned from the front.
- 2.—To men who have applied for enlistment but have been unable to pass the military physical test.
- 3.—To men past the age for military service.

Apply in person at Employment Office, 152 Front St. East.

# NEWS OF SPECIAL INTEREST TO WOMEN

## WOMEN SHOULD PREPARE FOR INDUSTRIAL WORK

Time Coming When Employers Will Have to Ask Assistance From Emergency Corps.

### PUBLIC MEN VOICE OPINIONS

Sir Edmund Walker and J. M. Godfrey Speakers on the Subject.

Two opinions relative to the disposition of employers towards women have been made recently in Toronto, by two public men who are not impatient, but go on preparing for the time which was almost inevitable in its coming—the time when employers would, from necessity, have to seek the assistance of women in carrying on their work.

A few days ago J. M. Godfrey told the Women's Emergency Corps that they must not be impatient, but go on preparing for the time which was almost inevitable in its coming—the time when employers would, from necessity, have to seek the assistance of women in carrying on their work.

"Be ready when the employers of the country will have to come to you to keep up industries. It's the last thing they will do, of course, but you must train yourselves in case the call comes."

Sir Edmund Walker, speaking at the patriotic performance at the Royal Alexandra, gave his opinion that it is now perfectly certain that women must be employed. "Beyond a doubt, before the war is over, we shall not have done our duty until every woman who can work finds her place. In Britain, women of gentle birth stand ready to go anywhere they are needed. We in this country have not yet been touched. Employers are anxious to use women, but I am not certain that women here have reached the point of coming forward."

Many Have Volunteered. According to registration at the Women's Emergency Corps, quite a number of women have already testified to their willingness to do anything needed that they can do. From other sources the same corps is made to feel that many women have not yet realized the need for individual effort.



Mlle. Alice Verlet to Sing for Bantams.

Mlle. Alice Verlet will return to Toronto to appear Wednesday night, April 23, at Massey Hall as the leading artist in the 216th Battalion concert. Toronto music lovers will remember the musical sensation when Mlle. Verlet appeared in this city last year. She will be supported by other leading artists, including Elizabeth Spencer, the noted church and concert contralto, and Vernon Archibald, the well-known baritone.

Tickets can be had at the R. S. Williams & Sons Co., Limited, 145 Yonge street, or at Massey Hall, prices ranging from 50 cents to \$1.50.

### FOUND DEAD IN HOTEL

COBourg, April 23.—Charles E. Mutton, 27, of this town, foreman of the construction and repair gang of the Bell Telephone Company between Kingston and Toronto, was found dead in bed at his room in the Allan Hotel, Belleville. An inquest will be held.

## VOGUES IN JEWELRY NOTICED THIS SPRING

Various 'Styles' Influences Also Affect the Modes in Finger Rings and Ear-Rings.

### ONYX AND DIAMONDS

Artistically Combined and Set in Platinum for Little Finger Rings.

Different jewels have their vogues—Influenced by the styles of greater importance, but just the same, distinctive. This season sees many odd and varied designs as a result of the many paths traversed before the main highway marked "style moderne" was eventually reached. The 1830 tendencies, the empire and Louis Seize periods and the fascinating Chinese and oriental influences, are all given expression in the wearing of dull gold or the jeweled pendant suspended on a delicate chain about milady's lily white neck.

Keen is the quest for odd earrings and quaint finger rings in antique or modern Chinese design. Japanese settings of queer stones are also very fashionable, explaining the extensive use of jade, bloodstones, cat's paws and the onyx in pierced gold and silver settings, as well as other precious stones in hammered settings employing the dragon and emblematic designs. Round hoop earrings, medallion and section pendant earrings are all very much in vogue, favoring very odd effects. The drops in some models reach nearly to the shoulders and remind one of by-gone oriental splendor.

Finger rings have assumed various new and original designs. The onyx set in platinum and centred with a small exquisitely cut diamond makes a most attractive little finger ring. Jade, too, is very popular for summer wear, and oddly shaped pieces are sometimes slily mounted and placed on a slender ring for the third or first finger. Dinner rings are in vogue again with a preference for precious stones set very deeply.

## Contest Correspondence.

### A CONVERT'S TESTIMONY.

Toronto. Motion Picture Editor: A convert to the World encloses nine coupons for Grace Cunard. It is exceedingly sad to think that "Poor Little Mary" (Miss Cunard) is so much loved by her admirers, when acting, is without a little lamb, otherwise it would have been a splendid commendation for votes. Mary is not in the same class with Grace Cunard or Olga Petrov and a second place, I think, on this occasion, will be good enough. Irish Pat.

### ONE FOR HENRY B.

Toronto. Motion Picture Editor: Enclosed please find a vote for Henry B. Walthall. Any one who witnessed the "Birth of a Nation" and failed to give him a vote is very unfeeling. Here is a man who can act, and not over-act, as you often see a good actor in the act of face-pulling, etc., but this man can act and think, and is a quiet, capable man. I think you would have said: "Here is an actor." Robert W. B.

### MARGUERITE MOST WORTHY.

Parkdale. Dear Editor: The struggle for foremost position is a very keen one, and also a very surprising one to me. That Miss Cunard would ever come near the top never as much as entered my head. I do not care for her acting or for her appearance. Miss Pickford is more worthy of first. However, she who is most worthy is Marguerite Clark. Hurry up, you, who love this dark-eyed little lady, and help me give her a boost. "Just Me."

### IF ONLY!

Spencerport, N.Y. Motion Picture Editor:—I suppose you will be surprised to get a letter from here. When I received the paper and read the contest, I simply must vote for dear Grace Cunard. If only every one here had a coupon Grace surely would win. Grace is a much better actress than Mary Pickford. She has such a wonderfully expressive face, charming personality and acts excellently. She is the best. Furthermore she has a most intelligent face and has more "snap" to her than Miss Pickford. Grace Cunard Admirer.

### MORE FOR ANNA.

Cochrane, Ont. Motion Picture Editor:—Here I come with another bunch of votes for Anna Little. I believe there are twenty-two votes this time. Altogether I have collected ninety-two votes for Miss Little. Mary Pickford is called "The Darling of the Movies," but I would rather have Anna Little, who is called "The Darling of the Plains." I would much rather

have Miss Little than Miss Pickford or Miss Cunard either. I like Mary's sister Lottie very much also. I always put her next to Miss Little, but Anna always comes first with me. Reita Carter.

### SPRITLY MARGUERITE.

Toronto. Dear Editor:—Enclosed please find one coupon in favor of Marguerite Clark. I am very sorry that Miss Clark is not further up on the list, but she is coming along fairly well. I prefer Miss Clark to Mary Pickford any day because she is so sprightly and full of life. N. K.

### THE JAP IS GOOD.

Toronto. Motion Picture Editor:—I have collected seven coupons in favor of Lenore Havaskawa, the clever Jap. He is certainly a splendid actor, and after he has been seen more often, he will only have expressed the opinion of only a few. M. D.

### BOYS OF COMPANY 'B.'

Toronto. Motion Picture Editor: Please find enclosed sixty-three (63) coupons for Mary Pickford, the most popular girl in the movie, as I am sure she will win out in this contest.

These coupons are all signed by the boys of "B" Company, 53rd Overseas Battalion, and I am sure they all want her to win. Pte. J. J. Hendon, "B" Co., 53rd Batt., C.E.F.

### GERALDINE NEEDS THEM.

Toronto. Editor Motion Picture Contest: I enclose herewith twelve more votes for Geraldine Farrar. Let us hear more of her. Mary Pickford is all right when it comes to playing childish parts, and excelling in her mouth, and anything else by which she is good-looking or not, she is very much mistaken. Miss Pickford has a point that is cute. She does not disgrace her face.

But give me Geraldine Farrar, who in her own right is a much better actress than Mary Pickford. She has such a wonderfully expressive face, charming personality and acts excellently. She is the best. Furthermore she has a most intelligent face and has more "snap" to her than Miss Pickford. Grace Cunard Admirer.

### INTERPRETATION.

Port Hope. Motion Picture Editor:—I have six votes for Marguerite Clark, with more to follow. I interpret the word "favorite" to mean the actor or actress whose appearance is most likely to cause me to attend a moving picture show, and I vote for Miss Clark because I never miss seeing her if I can possibly help it. I am afraid your contest is developing into a matter of choosing between Mary Pickford and Grace Cunard, as most of our favorites, regardless of his or her name, "knock" the other out of the majority. To movie fans who have a honest preference for some actor or actress it seems to be out of the running. I should like to say: "Vote for standing. Every vote helps, and the contest isn't over, by any means." Paramount.

### A SUGGESTION.

Toronto. Motion Picture Editor: Enclosed please find 25 votes for Miss Francis Bushman, "the sovereign of the screen." I am so pleased to see Mr. Bushman lead the actors in your contest, and would like so much to see him head the list, which is supplied with slight editing for you for Miss Bushman. Wake up, Metro; you have the best actor of the silent drama; help him to win first place. Regular Movie Fan.

### LATER ON, MAYBE.

Toronto. Motion Picture Editor: Enclosed please find eight votes for Harold Lockwood. Why he does not rank up in the front with Francis X. Bushman is a puzzle to me, as he is easily as good an actor. Why not start a "question corner" in "The World for picture fans, same as is being conducted in so many American dailies?" Boston Citizen of Toronto.

### DEATH OF R. E. REVELL

DUE TO HEART FAILURE. Prominent Mason and Member of Independent Foresters—Funeral Today.

R. E. Revell, a prominent Mason in Toronto, member of the Blue and St. Patrick's Chapter, Alpha Lodge, and also a member of the Independent Order of Foresters, McCaul, died at his late apartments, 562 Bathurst street, very suddenly, on Friday. Death was due to heart failure.

The late Mr. Revell was for 17 years in charge of the manufacturing department of the MacLaughlin Drug Co. There are no relatives in Canada, three surviving sisters being residents of Hartlepool, Eng.

The funeral service will be conducted by the Masonic Order, Alpha Lodge, today at 2.30.

### FRENCH PARLIAMENT ADJOURNS

PARIS, April 23, 8.35 p.m.—The French Parliament adjourned today for the Easter holidays, until May 18.

## PAPER vs. LINEN

FOR THE HOME

We noticed recently under this heading an article by Miss Brands, recommending the use of Paper Towels in the house. We heartily endorse all this lady says about Paper Towels, and would like to add that you can buy Eddy's Tissue Paper Towels made of the softest, most absorbent crepe paper, at prices varying from 10c to 50c per roll of 150 towels, perforated. ed7f

## ASK FOR EDDY'S

## The Amateur Gardener

BY RACHEL R. TODD, M.D.

Some Easily Grown Lilies. (Continued.)

Continuing my last article, I have no hesitation in also advising our amateurs to try Lilium Henry, a July variety of Chinese origin, and one of the most beautiful. It is a very tall grower, once the bulbs have clumped themselves after several years' growth, often reaching quite six feet—and indeed is our tallest lily—and well pays for a year or two of waiting. The color is very distinct, a clear deep yellow, the flowering is very free, and when the clumps are associated with tall perennials such as the English Larkspur, the contrast is not only in coloring but in form, is very desirable. No greater acquisition could be added to your herbaceous border than a good sized clump of L. Henry.

### PATRIOTIC CONCERT

BY HIGHLAND BANDS. Proceeds of Saturday Night's Event Will Go to Aid Prisoners in Germany.

Before a crowd of spectators, numbering several thousand, a concert was held at the armories Saturday night under the auspices of the 48th and 52nd C.E.F. Highland Bands. The proceeds of the event will be used to aid prisoners in Germany.

The massed band of these battalions was led by Bandmaster Slattery of the 48th Regiment, and an interesting and varied number of patriotic and appropriate selections composed the program. In addition the pipers of the regiment rendered solos, and various other features of the concert evoked the enthusiastic applause of the audience. The proceeds derived from the admission cost were applied to the selling of candy soliciting of subscriptions and money raised by other means.

### Announcements

Notices of any character relating to the raising of money, or the purpose of which is the raising of money, are inserted in the advertising columns at fifteen cents a line. Announcements for churches, societies, clubs or other organizations of future events, where the purpose is not the raising of money, may be inserted in this column at two cents a word, with a minimum of fifty cents for each insertion.

Fill Out and Send to MOTION PICTURE EDITOR, TORONTO WORLD

## The Toronto World

### Motion Picture Popularity Contest

My Favorite in the Pictures is .....

Name .....

Address .....

This coupon will be counted if mailed to MOTION PICTURE EDITOR, The Toronto World, 46 West Richmond Street, Toronto, on or before the closing date, to be announced later.

AMES BRAUND. Toronto Newspaper Survives Him. ...

**"The Spotless Dairy Bathed in Sunshine"**

# NO INCREASE IN PRICE

The fact that our price is still maintained without any increase whatsoever is surely evidence of what we have been telling you for years—that The Farmer's Dairy always considers first the interests of its customers.

Order now---Phone or Stop our Driver

## 21 Tickets \$1

Phone Hillcrest 4400

# THE FARMERS' DAIRY

Walmer Rd. and Bridgeman St.

**Polly and Her Pals** Copyright, 1916, by Randolph Lewis.

**Certainly—Of Course**

**By Sterrett** Great Britain Rights Reserved.

HOW 'Y LIKE ME IN AUNT POLLY'S NEW HAT, GRANDPA?

MY SAKES ALIVE, BUT AIN'T YOU SCRUMPTIOUS?

PATRICIA PERKINS! YOU'RE A NAUGHTY, NAUGHTY LITTLE GIRL! SUMME THAT HAT!

AW, HAVE A HEART, POLLY! YOU WAS A KID YERSELF ONCE!

YOU WOULDN'T THINK IT WAS SO HUMOROUS IF SOMEBODY SWIPED IT IN YOUR BEST HAT!

COURSE I WOULD!

WHERE'D YOU GET THAT? YOU LIL RASCAL?

Registered in U. S. Pat. Office. Copyright, 1916, by Newspaper Feature Service, Inc. Great Britain rights reserved.

The Toronto World

FOUNDED 1880. A morning newspaper published every day in the year by The World Newspaper Company of Toronto, Limited.

The Circulation of THE TORONTO DAILY AND SUNDAY WORLD is authenticated by the ABC Audit Bureau of Circulations

In advance will pay for The Daily World for one year, delivered in the City of Toronto or Hamilton, or by mail to any address in Canada, United Kingdom, Mexico and the British possessions.

It will prevent delay if letters containing "subscriptions," "orders for papers," "complaints," etc., are addressed to the Circulation Department.

MONDAY MORNING, APRIL 24

Who Hangs Back Today?

Canadian troops received their baptism of fire a year ago and demonstrated their equality with any infantry in the world.

FEET WERE WET THRU RECEIVED SOX IN TIME

Sergt. Wooding Writes From the Trenches to Thank Earls-court Women.

Mrs. R. Wooding, 68 Nairn avenue, Earls-court, a member of the executive committee, Independent Women Workers' Association, is in receipt of the following acknowledgment of parcel containing comforts received by her husband, Sgt. R. Wooding, in the trenches in Belgium.

MANY BRITISH SOLDIERS MARRY FRENCH GIRLS

Hundreds of Weddings and Engagements Mark Stay in Flanders.

ON THE BRITISH FRONT, April 23.—Army officers along this front say that many hundreds of British soldiers have married French girls since the expeditionary force landed in France, and hundreds of others have become engaged, a fact not generally known, even in London.

WOMEN MAY VOTE AT ANGLICAN MEETINGS

Today at the Easter vestry meetings of the Anglican Church, women of the diocese of Toronto may vote, the privilege having been conferred upon them at the last meeting of the synod.

QUEST OF ROYALTY AT OTTAWA

Miss Kathleen Burke is touring Canada, telling of the great work of the women's Scottish hospitals.

SEARCH FOR PARENTS OF EARL CAMERON

Earl Cameron, 14 years of age, was arrested at Exhibition Camp yesterday afternoon by the police of No. 6 division, Cowan avenue, on a charge of vagrancy.

A Notable Session

Whatever contemporary opinion of the session of the legislature which has

"KISMET"

Just closed may be, there can be no doubt about it having a notable mark in history. Several of the measures passed make a new record in Ontario policy.

DUKE IS COMING AT END OF WEEK

Extensive Program Arranged for Soldiers During His Stay.

A COURSE IN BOMBING

Will Be Commenced at the Old Fort, Toronto, This Morning.

SIXTEEN HEROES BACK FROM FRONT

More Invalided Canadian Veterans Arrived in City on Sunday Morning.

SIX TORONTO MEN

Taken to Convalescent Hospital, Where They Were Greeted by Friends.



VETERAN OF INDIA JOINS IRISH UNIT

J. V. Conroy is Made Company Quartermaster Sergeant—Has Two Sons at Front.

HIT BY MOTOR CAR IN CROSSING STREET

Mortimer Mills Knocked Down and Seriously Injured on Saturday Afternoon.

FIREMEN CALLED TO DUCHESS ST. BLAZE

Five Thousand Dollars' Damage Done to Building Occupied by Hooton Chocolate Co.

CHARGED

Harry Hartman arrested yesterday for assaulting J. by hitting him with a candlestick.

CHARGED

Charles Shevitsky arrested by police on a charge of operating, and both of the same

DUKE IS COMING AT END OF WEEK

Extensive Program Arranged for Soldiers During His Stay.

A COURSE IN BOMBING

Will Be Commenced at the Old Fort, Toronto, This Morning.

SIXTEEN HEROES BACK FROM FRONT

More Invalided Canadian Veterans Arrived in City on Sunday Morning.

SIX TORONTO MEN

Taken to Convalescent Hospital, Where They Were Greeted by Friends.

VETERAN OF INDIA JOINS IRISH UNIT

J. V. Conroy is Made Company Quartermaster Sergeant—Has Two Sons at Front.

HIT BY MOTOR CAR IN CROSSING STREET

Mortimer Mills Knocked Down and Seriously Injured on Saturday Afternoon.

FIREMEN CALLED TO DUCHESS ST. BLAZE

Five Thousand Dollars' Damage Done to Building Occupied by Hooton Chocolate Co.

CHARGED

CHARGED

CHARGED

CHARGED

CHARGED

CHARGED

CHARGED

CHARGED

CHARGED

CHARGED

CHARGED

CHARGED

CHARGED

CHARGED

CHARGED

CHARGED

CHARGED

CHARGED

CHARGED

CHARGED

CHARGED

CHARGED

CHARGED

CHARGED

CHARGED

CHARGED

CHARGED

CHARGED

CHARGED

CHARGED

CHARGED

CHARGED

CHARGED

CHARGED

CHARGED

CHARGED

CHARGED

CHARGED

CHARGED

CHARGED

CHARGED

CHARGED

CHARGED

CHARGED

CHARGED

CHARGED

CHARGED

CHARGED

CHARGED

CHARGED

CHARGED

CHARGED

CHARGED

CHARGED

CHARGED

CHARGED

CHARGED

CHARGED

CHARGED

CHARGED

CHARGED

CHARGED

CHARGED

CHARGED

CHARGED

CHARGED

CHARGED

CHARGED

CHARGED

CHARGED

CHARGED

CHARGED

CHARGED

CHARGED

DUKE IS COMING AT END OF WEEK

Extensive Program Arranged for Soldiers During His Stay.

A COURSE IN BOMBING

Will Be Commenced at the Old Fort, Toronto, This Morning.

SIXTEEN HEROES BACK FROM FRONT

More Invalided Canadian Veterans Arrived in City on Sunday Morning.

SIX TORONTO MEN

Taken to Convalescent Hospital, Where They Were Greeted by Friends.

VETERAN OF INDIA JOINS IRISH UNIT

J. V. Conroy is Made Company Quartermaster Sergeant—Has Two Sons at Front.

HIT BY MOTOR CAR IN CROSSING STREET

Mortimer Mills Knocked Down and Seriously Injured on Saturday Afternoon.

FIREMEN CALLED TO DUCHESS ST. BLAZE

Five Thousand Dollars' Damage Done to Building Occupied by Hooton Chocolate Co.

CHARGED

CHARGED

CHARGED

CHARGED

CHARGED

CHARGED

CHARGED

CHARGED

CHARGED

CHARGED

CHARGED

CHARGED

CHARGED

CHARGED

CHARGED

CHARGED

CHARGED

CHARGED

CHARGED

CHARGED

CHARGED

CHARGED

CHARGED

CHARGED

CHARGED

CHARGED

CHARGED

CHARGED

CHARGED

CHARGED

CHARGED

CHARGED

CHARGED

CHARGED

CHARGED

CHARGED

CHARGED

CHARGED

CHARGED

CHARGED

CHARGED

CHARGED

CHARGED

CHARGED

CHARGED

CHARGED

CHARGED

CHARGED

CHARGED

CHARGED

CHARGED

CHARGED

CHARGED

CHARGED

CHARGED

CHARGED

CHARGED

CHARGED

CHARGED

CHARGED

CHARGED

CHARGED

CHARGED

CHARGED

CHARGED

CHARGED

CHARGED

CHARGED

CHARGED

CHARGED

CHARGED

CHARGED

CHARGED

CHARGED

DUKE IS COMING AT END OF WEEK

Extensive Program Arranged for Soldiers During His Stay.

A COURSE IN BOMBING

Will Be Commenced at the Old Fort, Toronto, This Morning.

SIXTEEN HEROES BACK FROM FRONT

More Invalided Canadian Veterans Arrived in City on Sunday Morning.

SIX TORONTO MEN

Taken to Convalescent Hospital, Where They Were Greeted by Friends.

VETERAN OF INDIA JOINS IRISH UNIT

J. V. Conroy is Made Company Quartermaster Sergeant—Has Two Sons at Front.

HIT BY MOTOR CAR IN CROSSING STREET

Mortimer Mills Knocked Down and Seriously Injured on Saturday Afternoon.

FIREMEN CALLED TO DUCHESS ST. BLAZE

Five Thousand Dollars' Damage Done to Building Occupied by Hooton Chocolate Co.

CHARGED

CHARGED

CHARGED

CHARGED

CHARGED

CHARGED

CHARGED

CHARGED

CHARGED

CHARGED

CHARGED

CHARGED

CHARGED

CHARGED

CHARGED

CHARGED

CHARGED

CHARGED

CHARGED

CHARGED

CHARGED

CHARGED

CHARGED

CHARGED

CHARGED

CHARGED

CHARGED

CHARGED

CHARGED

CHARGED

CHARGED

CHARGED

CHARGED

CHARGED

CHARGED

CHARGED

CHARGED

CHARGED

CHARGED

CHARGED

CHARGED

CHARGED

CHARGED

CHARGED

CHARGED

CHARGED

CHARGED

CHARGED

CHARGED

CHARGED

CHARGED

CHARGED

CHARGED

CHARGED

CHARGED

CHARGED

CHARGED

CHARGED



Rowing Great Victory for Joe Wright's Crew

JOE WRIGHT'S REMARKABLY PROPER STROKE ROWED PERFECTLY BY PENN.

Yale Soundly Beaten From Start to Finish by Better Crew in First Eight-Oared Race of the Season—Penn. Juniors Beaten by Bad Steering.

PHILADELPHIA, Pa., April 22.—Pennsylvania defeated the Yale varsity eight on the Schuylkill river this afternoon in decisive fashion.

It was a three and half-high exhausted crew that rowed the mile and a half course in 7 minutes 14 seconds.

At the mile mark the Quakers had the whip hand. Altogether Yale made a vicious sprint in a desperate effort to overtake the Quakers in the last half mile from the end, the Pennsylvania eight met with a half mile of bad steering.

It was a beautiful sight, but it availed nothing for Chickering and Rose came right back with the most energetic effort and quickly drew the Pennsylvania ever further ahead.

Baseball Toronto 9 Bridgeport 3

How the Big League Hitters Shape Up in Early Season Games

Table with columns for Club Batting and National League Batting, listing teams like Detroit, Chicago, New York, etc., with statistics.

THREE BOSTON BOXERS UNBEATEN IN TOURNAY

Montreal Took Away Welter Title and Riversides Landed Four, Two by J. Barker.

Table with columns for Club Batting and National League Batting, listing teams like Philadelphia, Brooklyn, Cincinnati, etc., with statistics.

THE TORONTO LEAFS KEEP UP THEIR WINNING GAIT

Beat Bridgeport on Sunday With Eddie Wright Holding Down Third Base Position.

BRIDGEPORT, Conn., April 22.—The downpour which prevented the Toronto Bridgeport game here Saturday cleared away time to enable the teams to play today, and the Leafs won their sixth consecutive game, by 3 to 0.

The Leafs had a little better fiery parade of their own, but on the new uniforms for the first time, the new regulars in light-gray and blue.

Baseball Records

Table with columns for American League and National League, listing player records for clubs like Philadelphia, St. Louis, etc.

Ontario Cup Soccer Series to be Played

Association Extends Time for Receiving Entries—Harry Brown President.

The Ontario Football Association held their semi-annual meeting on Saturday.

At St. Louis—Cleveland and St. Louis battled fifteen innings to a 1-1 tie on Saturday.

WASHINGTON STADIUM TO SEAT FORTY THOUSAND

House Asked for Appropriation of Million and Half—Want Next Olympic Games.

WASHINGTON, April 22.—Representative W. Murray Hurlbert of New York introduced a bill in the House today for the purpose of having erected in the East Potomac Park, this city, a stadium.

THE LONDON PAIR WON INTERNATIONAL TITLE

Whist Congress Championships Decided on Saturday—League Officers Elected.

Connor and Ashplant of London won the international pairs championship at the Canadian Whist Congress at the King Edward Hotel on Saturday night.

WASHINGTON STADIUM TO SEAT FORTY THOUSAND

House Asked for Appropriation of Million and Half—Want Next Olympic Games.

ONE GAME SATURDAY IN NATIONAL LEAGUE

At Chicago—Mike Doolan, batting for Michigan, drove in the winning run in the ninth inning of a hard-fought victory, which Chicago scored over Cincinnati on Saturday.

At St. Louis—Cleveland and St. Louis battled fifteen innings to a 1-1 tie on Saturday.

At Detroit—Detroit rallied Sunday afternoon and Chicago won a wet field, 3 to 2.

WASHINGTON STADIUM TO SEAT FORTY THOUSAND

House Asked for Appropriation of Million and Half—Want Next Olympic Games.

WASHINGTON, April 22.—Representative W. Murray Hurlbert of New York introduced a bill in the House today for the purpose of having erected in the East Potomac Park, this city, a stadium.

WASHINGTON STADIUM TO SEAT FORTY THOUSAND

House Asked for Appropriation of Million and Half—Want Next Olympic Games.

WASHINGTON, April 22.—Representative W. Murray Hurlbert of New York introduced a bill in the House today for the purpose of having erected in the East Potomac Park, this city, a stadium.

WASHINGTON STADIUM TO SEAT FORTY THOUSAND

House Asked for Appropriation of Million and Half—Want Next Olympic Games.

MAHER'S HORSE EXCHANGE

16-28 HAYDEN STREET Take Yonge Car from Depot.

MANER'S HORSE EXCHANGE ANNOUNCE THEY WANT 1,000 HORSES BEGINNING MONDAY, APRIL 24th

Inspections will begin for the purchase of three classes of remounts daily, as follows:

Class AA, Heavy Artillery, minimum weight, 1,270 lbs.

Class A, Light Artillery, minimum weight, 1,056 lbs.

Class C, Cavalry, average weights.

Minimum Heights, all Horses, 14.3 to 16.2.

Ages 5 to 9.

5 per cent. Greys will be accepted.

Purchases will be made on the basis of:

12 per cent. Heavy Artillery.

48 per cent. Light Artillery.

40 per cent. Cavalry.

Horses will be shown in the order of their arrival at our stable. Payments will be made morning following acceptance by Purchasing Officers.

T. B. C. EXCURSION BUFFALO

\$2.70 RETURN SATURDAY, APRIL 29

Canadian Pacific Railway TRAIN LEAVES UNION STATION AT 9.30 A.M.

Tickets good to return on regular trains Sunday or Monday.

MAHER'S HORSE EXCHANGE

16-28 HAYDEN STREET Take Yonge Car from Depot.

MANER'S HORSE EXCHANGE ANNOUNCE THEY WANT 1,000 HORSES BEGINNING MONDAY, APRIL 24th

Inspections will begin for the purchase of three classes of remounts daily, as follows:

Class AA, Heavy Artillery, minimum weight, 1,270 lbs.

Class A, Light Artillery, minimum weight, 1,056 lbs.

Class C, Cavalry, average weights.

Minimum Heights, all Horses, 14.3 to 16.2.

Ages 5 to 9.

5 per cent. Greys will be accepted.

Purchases will be made on the basis of:

12 per cent. Heavy Artillery.







**WANTED**  
Carpet  
Toronto  
**ONCE**  
Wilton  
weavers  
rs, male  
Knowles  
rs, male  
ners, male  
m 16 to 18  
cloth and  
ng. Big  
made in a  
energetic  
ng Men to  
t and rug  
dy work,  
67123  
nted—Must be  
a styles for men  
to none in Am-  
ne of the best  
it and will treat  
nt confidence.  
123  
NTD—Two in  
high wages.  
Gardens, Spadina  
ed 7  
ED—Fourteen to  
World Office,  
ed 11  
position, with  
for intelligent  
Mr. Somerville,  
ed 11  
ool man, good at  
Alex automatic  
wages. National  
ed 7  
ed geographer  
street 13 and  
ain 5507.  
lished packing  
e City of Toron-  
Apply Box 78,  
ed 12  
anted,  
Apply Toronto  
Company, 1179  
ed 11  
anted  
for sawdust. Ap-  
ton 315,  
ed 7  
supplies  
equip your car  
duation box,  
and tall lamps,  
or phone us.  
ed 11  
kamine it. Save  
in time. Ear-  
ed 7  
ales  
DAY AUCTION  
60 hours will be  
under our special  
force Exchange,  
car from depot.  
ed 11  
Legal  
C. O. head, of  
Toronto,  
Main, practical  
ore patent off-  
ed 11  
Collector, Canada,  
patients, etc.  
ed 11  
Private Dis-  
Consultation  
East.  
ed 11  
Disease of men  
erent east.  
ed 11  
Scientific Electri-  
Face and  
Chambers,  
Main 1877,  
ed 11  
topathic Treat-  
ira, 716 Yonge  
1212  
110. Open even-  
ed 11  
and Bath, 489  
ed 11  
DOXBE, Ryrie  
Shaw street  
Chiropractor  
Shaw street  
Ladies' 433  
at rooms,  
appointment,  
vidence, 24 Al-  
Toronto,  
ed 11  
asthma, bron-  
Tons of breath  
trial boxes, 80  
ycho. Painful  
Church, 64

**SELLING PERSISTS ON WALL STREET**

**Little Support Given to Stock Exchange in Short Session.**

**MUNITIONS HIT HARD**

**U. S. Steel Falls Back to Eighty Points Through Crisis.**

NEW YORK, April 27.—Heavy and persistent selling pressure was again highly effective during Saturday's two-hour session, the record of the preceding day merely accentuating the extent of the largest of any recent week-end, approximately 600,000 shares being traded in the last half, which represented the output of the final hour, when the support was almost without semblance of support.

The German and Mexican crises, for as such they are regarded by the financial community, were again the factors around which the feverish market centered. Special orders, more directly the munitions, equipments, minor industrial and old, were steadily liquidated, with few exceptions recording lower prices of the year. In general these issues are 20 to 30 points under last year's best quotations. Among the weakest issues were General Motors, which fell 2 to 41; Mexican Petroleum, 10 to 89; S. Industrial Alcohol, 6 to 137; Crucible Steel, 74 to 75; Baldwin Locomotive, 64 to 84; Standard Oil, 10 to 18; American Smelting, 6 to 84; Grease-Canada, 4 to 41; Texas Co., 5 to 18; American Sugar, 4 to 45; and American Lumber, 4 to 45.

U. S. Steel closed at 80, down from 82 1/2 on Friday. It was one of the few issues that showed a slight advance, but this was due to a large order for 100,000 shares, which was filled during the session.

There were signs of liquidation in bonds, some issues recording materially on the decline. Total sales (par value), \$2,800,000.

**WHEAT AGAIN FELL ON GENERAL SALES**

**Strained Foreign Relations of U.S. Adversely Affects Chicago Pit.**

**WATCHED NEW YORK**

**Buyers Governed Good Deal by Actions on Stock Exchange.**

CHICAGO, April 27.—Strained foreign relations brought about material declines in the value of wheat. Saturday prices closed unsettled, 1 1/2c to 2 1/2c net, with May at \$1.12 1/2 and July at \$1.11 1/2. Corn lost 1/4c to 1/2c, and oats 1/4c to 1/2c. In provisions, the outcome was a gain that varied from 5c to 2 1/2c.

Flour prices were generally higher than in the wheat pit, but with no active demand until just before the close. Week-end evening-up of the market, however, was not so general as last week, but in the main, the market continued bearish, despite prospects of a good decrease in the U. S. & V. supply total on Monday. The action was that of a majority of wheat traders, who were chiefly on the course of the U. S. & V. stock market, in so far as the stocks of the wheat states were concerned, especially the crisis with Germany.

To some extent, however, the Kansas state crop report, suggesting a yield of 26,000,000 bushels in 1915, became effective as a cause of lower prices.

Unfavorable weather for the seeding of wheat in the northwest was more or less ignored by dealers here, except as tending somewhat to check the force of downturns in the market. Adverse field reports from the seed wheat states were also for the moment given scant notice, although one well-known expert was out with a forecast of less than half a crop this season in Illinois and Indiana.

Corn heavily with wheat declines, however, resulted in persistent buying on the part of strong interests.

Oats received fair support, owing to the purchase of 600,000 bushels here for export. The market, nevertheless, showed a downward bias on account of the setback to the value of other grain, and because of the excellent crop outlook for 1916.

Land advanced today to the highest price of the season, it was said, in Hamilton county, where 200 acres had been disposed of for export. Other provisions rose 10c, helped by higher quotations on hops.

**RECORD OF SATURDAY'S MARKETS**

TORONTO STOCK EXCHANGE.		NEW YORK STOCKS.	
Am. Cyanamid common	Asked.	Erickson Perkins & Co., 14 West King street, report the following fluctuations on the New York Stock Exchange:	Op. High Low Cl. Sales.
Am. Cyanamid preferred	74 1/2	Atchafalaya	100 1/2 100 1/2 100 1/2 100 1/2 2,500
Ames-Whitman common	28 1/2	C. P. R.	84 1/2 84 1/2 84 1/2 84 1/2 2,000
Brazilian	11 1/2	Che. & O.	59 1/2 59 1/2 59 1/2 59 1/2 1,800
B. C. Fishing	16 1/2	Chesapeake	10 1/2 10 1/2 10 1/2 10 1/2 1,200
Can. Packers com.	11 1/2	Chesapeake	10 1/2 10 1/2 10 1/2 10 1/2 1,200
do. preferred	10 1/2	Chesapeake	10 1/2 10 1/2 10 1/2 10 1/2 1,200
Bell Telephone	147 1/2	Chesapeake	10 1/2 10 1/2 10 1/2 10 1/2 1,200
Burl. P. com.	7 1/2	Chesapeake	10 1/2 10 1/2 10 1/2 10 1/2 1,200
Canada Bread com.	30	Chesapeake	10 1/2 10 1/2 10 1/2 10 1/2 1,200
do. preferred	30	Chesapeake	10 1/2 10 1/2 10 1/2 10 1/2 1,200
C. Car. P. com.	7 1/2	Chesapeake	10 1/2 10 1/2 10 1/2 10 1/2 1,200
do. preferred	9 1/2	Chesapeake	10 1/2 10 1/2 10 1/2 10 1/2 1,200
Can. St. Lines com.	25 1/2	Chesapeake	10 1/2 10 1/2 10 1/2 10 1/2 1,200
do. preferred	25 1/2	Chesapeake	10 1/2 10 1/2 10 1/2 10 1/2 1,200
Can. Gen. Electric	112	Chesapeake	10 1/2 10 1/2 10 1/2 10 1/2 1,200
Can. Loc. com.	60	Chesapeake	10 1/2 10 1/2 10 1/2 10 1/2 1,200
Canadian Pacific Ry.	164	Chesapeake	10 1/2 10 1/2 10 1/2 10 1/2 1,200
Can. Pac. com.	110	Chesapeake	10 1/2 10 1/2 10 1/2 10 1/2 1,200
City Dairy common	100	Chesapeake	10 1/2 10 1/2 10 1/2 10 1/2 1,200
do. preferred	100	Chesapeake	10 1/2 10 1/2 10 1/2 10 1/2 1,200
Consolidated	47 1/2	Chesapeake	10 1/2 10 1/2 10 1/2 10 1/2 1,200
Cons. Smelters	152 1/2	Chesapeake	10 1/2 10 1/2 10 1/2 10 1/2 1,200
Consumers' Gas	176	Chesapeake	10 1/2 10 1/2 10 1/2 10 1/2 1,200
Crown Reserve	100	Chesapeake	10 1/2 10 1/2 10 1/2 10 1/2 1,200
Crow's Nest	77	Chesapeake	10 1/2 10 1/2 10 1/2 10 1/2 1,200
Do. preferred	77 1/2	Chesapeake	10 1/2 10 1/2 10 1/2 10 1/2 1,200
Dome	25.00	Chesapeake	10 1/2 10 1/2 10 1/2 10 1/2 1,200
Domestic	21	Chesapeake	10 1/2 10 1/2 10 1/2 10 1/2 1,200
Dom. Steel	100	Chesapeake	10 1/2 10 1/2 10 1/2 10 1/2 1,200
Dom. Steel com.	100	Chesapeake	10 1/2 10 1/2 10 1/2 10 1/2 1,200
Dom. Steel pref.	100	Chesapeake	10 1/2 10 1/2 10 1/2 10 1/2 1,200
Dom. Steel Tel.	100	Chesapeake	10 1/2 10 1/2 10 1/2 10 1/2 1,200
Dom. Steel Tel. com.	100	Chesapeake	10 1/2 10 1/2 10 1/2 10 1/2 1,200
Dom. Steel Tel. pref.	100	Chesapeake	10 1/2 10 1/2 10 1/2 10 1/2 1,200
Dom. Steel Tel. Tel.	100	Chesapeake	10 1/2 10 1/2 10 1/2 10 1/2 1,200
Dom. Steel Tel. Tel. com.	100	Chesapeake	10 1/2 10 1/2 10 1/2 10 1/2 1,200
Dom. Steel Tel. Tel. pref.	100	Chesapeake	10 1/2 10 1/2 10 1/2 10 1/2 1,200
Dom. Steel Tel. Tel. Tel.	100	Chesapeake	10 1/2 10 1/2 10 1/2 10 1/2 1,200
Dom. Steel Tel. Tel. Tel. com.	100	Chesapeake	10 1/2 10 1/2 10 1/2 10 1/2 1,200
Dom. Steel Tel. Tel. Tel. pref.	100	Chesapeake	10 1/2 10 1/2 10 1/2 10 1/2 1,200
Dom. Steel Tel. Tel. Tel. Tel.	100	Chesapeake	10 1/2 10 1/2 10 1/2 10 1/2 1,200
Dom. Steel Tel. Tel. Tel. Tel. com.	100	Chesapeake	10 1/2 10 1/2 10 1/2 10 1/2 1,200
Dom. Steel Tel. Tel. Tel. Tel. pref.	100	Chesapeake	10 1/2 10 1/2 10 1/2 10 1/2 1,200
Dom. Steel Tel. Tel. Tel. Tel. Tel.	100	Chesapeake	10 1/2 10 1/2 10 1/2 10 1/2 1,200
Dom. Steel Tel. Tel. Tel. Tel. Tel. com.	100	Chesapeake	10 1/2 10 1/2 10 1/2 10 1/2 1,200
Dom. Steel Tel. Tel. Tel. Tel. Tel. pref.	100	Chesapeake	10 1/2 10 1/2 10 1/2 10 1/2 1,200
Dom. Steel Tel. Tel. Tel. Tel. Tel. Tel.	100	Chesapeake	10 1/2 10 1/2 10 1/2 10 1/2 1,200
Dom. Steel Tel. Tel. Tel. Tel. Tel. Tel. com.	100	Chesapeake	10 1/2 10 1/2 10 1/2 10 1/2 1,200
Dom. Steel Tel. Tel. Tel. Tel. Tel. Tel. pref.	100	Chesapeake	10 1/2 10 1/2 10 1/2 10 1/2 1,200
Dom. Steel Tel. Tel. Tel. Tel. Tel. Tel. Tel.	100	Chesapeake	10 1/2 10 1/2 10 1/2 10 1/2 1,200
Dom. Steel Tel. Tel. Tel. Tel. Tel. Tel. Tel. com.	100	Chesapeake	10 1/2 10 1/2 10 1/2 10 1/2 1,200
Dom. Steel Tel. Tel. Tel. Tel. Tel. Tel. Tel. pref.	100	Chesapeake	10 1/2 10 1/2 10 1/2 10 1/2 1,200
Dom. Steel Tel. Tel. Tel. Tel. Tel. Tel. Tel. Tel.	100	Chesapeake	10 1/2 10 1/2 10 1/2 10 1/2 1,200
Dom. Steel Tel. Tel. Tel. Tel. Tel. Tel. Tel. Tel. com.	100	Chesapeake	10 1/2 10 1/2 10 1/2 10 1/2 1,200
Dom. Steel Tel. Tel. Tel. Tel. Tel. Tel. Tel. Tel. pref.	100	Chesapeake	10 1/2 10 1/2 10 1/2 10 1/2 1,200
Dom. Steel Tel. Tel. Tel. Tel. Tel. Tel. Tel. Tel. Tel.	100	Chesapeake	10 1/2 10 1/2 10 1/2 10 1/2 1,200
Dom. Steel Tel. Tel. Tel. Tel. Tel. Tel. Tel. Tel. Tel. com.	100	Chesapeake	10 1/2 10 1/2 10 1/2 10 1/2 1,200
Dom. Steel Tel. Tel. Tel. Tel. Tel. Tel. Tel. Tel. Tel. pref.	100	Chesapeake	10 1/2 10 1/2 10 1/2 10 1/2 1,200
Dom. Steel Tel. Tel. Tel. Tel. Tel. Tel. Tel. Tel. Tel. Tel.	100	Chesapeake	10 1/2 10 1/2 10 1/2 10 1/2 1,200
Dom. Steel Tel. Tel. Tel. Tel. Tel. Tel. Tel. Tel. Tel. Tel. com.	100	Chesapeake	10 1/2 10 1/2 10 1/2 10 1/2 1,200
Dom. Steel Tel. Tel. Tel. Tel. Tel. Tel. Tel. Tel. Tel. Tel. pref.	100	Chesapeake	10 1/2 10 1/2 10 1/2 10 1/2 1,200
Dom. Steel Tel. Tel. Tel. Tel. Tel. Tel. Tel. Tel. Tel. Tel. Tel.	100	Chesapeake	10 1/2 10 1/2 10 1/2 10 1/2 1,200
Dom. Steel Tel. Tel. Tel. Tel. Tel. Tel. Tel. Tel. Tel. Tel. Tel. com.	100	Chesapeake	10 1/2 10 1/2 10 1/2 10 1/2 1,200
Dom. Steel Tel. Tel. Tel. Tel. Tel. Tel. Tel. Tel. Tel. Tel. Tel. pref.	100	Chesapeake	10 1/2 10 1/2 10 1/2 10 1/2 1,200
Dom. Steel Tel. Tel. Tel. Tel. Tel. Tel. Tel. Tel. Tel. Tel. Tel. Tel.	100	Chesapeake	10 1/2 10 1/2 10 1/2 10 1/2 1,200
Dom. Steel Tel. Tel. Tel. Tel. Tel. Tel. Tel. Tel. Tel. Tel. Tel. Tel. com.	100	Chesapeake	10 1/2 10 1/2 10 1/2 10 1/2 1,200
Dom. Steel Tel. Tel. Tel. Tel. Tel. Tel. Tel. Tel. Tel. Tel. Tel. Tel. pref.	100	Chesapeake	10 1/2 10 1/2 10 1/2 10 1/2 1,200
Dom. Steel Tel. Tel. Tel. Tel. Tel. Tel. Tel. Tel. Tel. Tel. Tel. Tel. Tel.	100	Chesapeake	10 1/2 10 1/2 10 1/2 10 1/2 1,200
Dom. Steel Tel. Tel. Tel. Tel. Tel. Tel. Tel. Tel. Tel. Tel. Tel. Tel. Tel. com.	100	Chesapeake	10 1/2 10 1/2 10 1/2 10 1/2 1,200
Dom. Steel Tel. Tel. Tel. Tel. Tel. Tel. Tel. Tel. Tel. Tel. Tel. Tel. Tel. pref.	100	Chesapeake	10 1/2 10 1/2 10 1/2 10 1/2 1,200
Dom. Steel Tel. Tel. Tel. Tel. Tel. Tel. Tel. Tel. Tel. Tel. Tel. Tel. Tel. Tel.	100	Chesapeake	10 1/2 10 1/2 10 1/2 10 1/2 1,200
Dom. Steel Tel. Tel. Tel. Tel. Tel. Tel. Tel. Tel. Tel. Tel. Tel. Tel. Tel. Tel. com.	100	Chesapeake	10 1/2 10 1/2 10 1/2 10 1/2 1,200
Dom. Steel Tel. Tel. Tel. Tel. Tel. Tel. Tel. Tel. Tel. Tel. Tel. Tel. Tel. Tel. pref.	100	Chesapeake	10 1/2 10 1/2 10 1/2 10 1/2 1,200
Dom. Steel Tel. Tel. Tel. Tel. Tel. Tel. Tel. Tel. Tel. Tel. Tel. Tel. Tel. Tel. Tel.	100	Chesapeake	10 1/2 10 1/2 10 1/2 10 1/2 1,200
Dom. Steel Tel. Tel. Tel. Tel. Tel. Tel. Tel. Tel. Tel. Tel. Tel. Tel. Tel. Tel. Tel. com.	100	Chesapeake	10 1/2 10 1/2 10 1/2 10 1/2 1,200
Dom. Steel Tel. Tel. Tel. Tel. Tel. Tel. Tel. Tel. Tel. Tel. Tel. Tel. Tel. Tel. Tel. pref.	100	Chesapeake	10 1/2 10 1/2 10 1/2 10 1/2 1,200
Dom. Steel Tel. Tel. Tel. Tel. Tel. Tel. Tel. Tel. Tel. Tel. Tel. Tel. Tel. Tel. Tel. Tel.	100	Chesapeake	10 1/2 10 1/2 10 1/2 10 1/2 1,200
Dom. Steel Tel. Tel. Tel. Tel. Tel. Tel. Tel. Tel. Tel. Tel. Tel. Tel. Tel. Tel. Tel. Tel. com.	100	Chesapeake	10 1/2 10 1/2 10 1/2 10 1/2 1,200
Dom. Steel Tel. Tel. Tel. Tel. Tel. Tel. Tel. Tel. Tel. Tel. Tel. Tel. Tel. Tel. Tel. Tel. pref.	100	Chesapeake	10 1/2 10 1/2 10 1/2 10 1/2 1,200
Dom. Steel Tel. Tel. Tel. Tel. Tel. Tel. Tel. Tel. Tel. Tel. Tel. Tel. Tel. Tel. Tel. Tel. Tel.	100	Chesapeake	10 1/2 10 1/2 10 1/2 10 1/2 1,200
Dom. Steel Tel. Tel. Tel. Tel. Tel. Tel. Tel. Tel. Tel. Tel. Tel. Tel. Tel. Tel. Tel. Tel. Tel. com.	100	Chesapeake	10 1/2 10 1/2 10 1/2 10 1/2 1,200
Dom. Steel Tel. Tel. Tel. Tel. Tel. Tel. Tel. Tel. Tel. Tel. Tel. Tel. Tel. Tel. Tel. Tel. Tel. pref.	100	Chesapeake	10 1/2 10 1/2 10 1/2 10 1/2 1,200
Dom. Steel Tel. Tel. Tel. Tel. Tel. Tel. Tel. Tel. Tel. Tel. Tel. Tel. Tel. Tel. Tel. Tel. Tel. Tel.	100	Chesapeake	10 1/2 10 1/2 10 1/2 10 1/2 1,200
Dom. Steel Tel. Tel. Tel. Tel. Tel. Tel. Tel. Tel. Tel. Tel. Tel. Tel. Tel. Tel. Tel. Tel. Tel. Tel. com.	100	Chesapeake	10 1/2 10 1/2 10 1/2 10 1/2 1,200
Dom. Steel Tel. Tel. Tel. Tel. Tel. Tel. Tel. Tel. Tel. Tel. Tel. Tel. Tel. Tel. Tel. Tel. Tel. Tel. pref.	100	Chesapeake	10 1/2 10 1/2 10 1/2 10 1/2 1,200
Dom. Steel Tel. Tel. Tel. Tel. Tel. Tel. Tel. Tel. Tel. Tel. Tel. Tel. Tel. Tel. Tel. Tel. Tel. Tel. Tel.	100	Chesapeake	10 1/2 10 1/2 10 1/2 10 1/2 1,200
Dom. Steel Tel. Tel. Tel. Tel. Tel. Tel. Tel. Tel. Tel. Tel. Tel. Tel. Tel. Tel. Tel. Tel. Tel. Tel. Tel. com.	100	Chesapeake	10 1/2 10 1/2 10 1/2 10 1/2 1,200
Dom. Steel Tel. Tel. Tel. Tel. Tel. Tel. Tel. Tel. Tel. Tel. Tel. Tel. Tel. Tel. Tel. Tel. Tel. Tel. Tel. pref.	100	Chesapeake	10 1/2 10 1/2 10 1/2 10 1/2 1,200
Dom. Steel Tel.	100	Chesapeake	10 1/2 10 1/2 10 1/2 10 1/2 1,200
Dom. Steel Tel. com.	100	Chesapeake	10 1/2 10 1/2 10 1/2 10 1/2 1,200
Dom. Steel Tel. pref.	100	Chesapeake	10 1/2 10 1/2 10 1/2 10 1/2 1,200
Dom. Steel Tel.	100	Chesapeake	10 1/2 10 1/2 10 1/2 10 1/2 1,200
Dom. Steel Tel. com.	100	Chesapeake	10 1/2 10 1/2 10 1/2 10 1/2 1,200
Dom. Steel Tel. pref.	100	Chesapeake	10 1/2 10 1/2 10 1/2 10 1/2 1,200
Dom. Steel Tel.	100	Chesapeake	10 1/2 10 1/2 10 1/2 10 1/2 1,200
Dom. Steel Tel. com.	100	Chesapeake	10 1/2 10 1/2 10 1/2 10 1/2 1,200
Dom. Steel Tel. pref.	100	Chesapeake	10 1/2 10 1/2 10 1/2 10 1/2 1,200
Dom. Steel Tel.	100	Chesapeake	10 1/2 10 1/2 10 1/2 10 1/2 1,200
Dom. Steel Tel. com.	100	Chesapeake	10 1/2 10 1/2 10 1/2 10 1/2 1,200
Dom. Steel Tel. pref.	100	Chesapeake	10 1/2 10 1/2 10 1/2 10 1/2 1,200
Dom. Steel Tel.	100	Chesapeake	10 1/2 10 1/2 10 1/2 10 1/2 1,200
Dom. Steel Tel. com.	100	Chesapeake	10 1/2 10 1/2 10 1/2 10 1/2 1,200
Dom. Steel Tel. pref.	100	Chesapeake	10 1/2 10 1/2 10 1/2 10 1/2 1,200
Dom. Steel Tel.	100	Chesapeake	10 1/2 10 1/2 10 1/2 10 1/2 1,200
Dom. Steel Tel. com.	100	Chesapeake	10 1/2 10 1/2 10 1/2 10 1/2 1,200
Dom. Steel Tel. pref.	100	Chesapeake	10 1/2 10 1/2 10 1/2 10 1/2 1,200
Dom. Steel Tel.	100	Chesapeake	10 1/2 10 1/2 10 1/2 10 1/2 1,200
Dom. Steel Tel. com.	100	Chesapeake	10 1/2 10

The Easter Home Lovers' Club

TAKE OUT A MEMBERSHIP and begin the refitting of your home now while you can avail yourself of these big clearing values.

THE ROBERT SIMPSON COMPANY LIMITED

VISITORS

to the city for the holiday will receive a cordial welcome at the store today.

These Goods Are on Sale Today

Monday Basement Sale Items

8.30 Special Brooms below present cost from factory. Full clear corn, 4 strings. Reg. 29c. Monday sale .22

8.30 a.m. Special GALVANIZED IRON WASH BOILERS. Size 8 or 9, rustproof. Regular \$1.35. 100 only to sell. Monday for .98

8.30 a.m. Special 2-burner Gas Stove, below factory cost; drill burner; 12 x 18 oven; lever taps. No phone or mail orders. Regular \$7.49.5

THE NELSON GAS RANGE has four top burners and a simmering burner; large oven. Exceptional value at 10.00

8.30 A.M. SPECIAL Double Boiler, the 2-quart size. Regular 39c. No phone or mail orders. Monday, 8.30 special .29

Step Ladders, a well built, reliable ladder, with pull rest. 5-foot size, Monday, 8.30, 4.95

8.30 Specials Globe Washboard Bargain. 700 for the 8.30 customer. Regular 35c. Monday Sale .24

Self-wringing Mops, complete with mop cloths. Monday .25

Window Screens, adjustable sizes, hardwood frames. Each 1.50 to 5.00

You Can Have a Dainty Table at Small Cost

by selecting now from the clearing stocks in our spring sales. Many of the dishes and glass pieces we now offer will be difficult to get later, and every piece is made to bring quick clearing.

Odd Dinnerware

- 100 Dozen Tea, Breakfast and Soup Plates, decorated; best ware. Monday, each .6

Fine Dinner Sets

- "Regina" Complete Dinner Set, \$8.25—English semi-porcelain with pretty floral and conventional decoration, in green and blue colorings; 97 pieces. Monday .825

Clover Leaf Dinnerware

- BARGAIN PRICES. 12c Cups and Saucers, for .10

Glassware

- For 40c—7-piece Water Set, in new pressed cut designs. Monday .49

Decorated Plates

- \$1.50, \$2.00 and \$2.50 a Dozen Decorated China Tea and Breakfast Plates, rose festoon and conventional decorations, 200 dozen only. Monday, 8.30 a.m. special, each .7

8.30 a.m. Special 70 New Toilet Sets at \$1.98

Less than present laid down cost. Handsome green and blue floral decorations. Sets consist of large roll rim basin, ewer, covered chamber, soap dish and drainer, brush vase, mug and small jug. No phone or mail orders. 8.30 special Monday, complete . . . 1.98

In the Big Men's Store

Quantity as well as quality is desirable in the wardrobe of the summer man. Quality we always give, quantity you may have at very small outlay, for our prices are lowered by the huge amount of men's wear we handle in a season.



These Specials Are on Sale Today

Bring the Boys Down Monday to Be Outfitted

Clothes listed below have been specially priced for clearing, selected from our big spring stocks. 200 BOYS YOKE NORFOLK SUITS. Single-breasted; splendidly tailored from dark gray English tweeds; plain weaves. One of the new spring models, with pleats to belt, and patch pocket; bloomer pants. Sizes 34 to 44. Selling Monday . . . 4.95

Suits for Men \$7.95

A Monday shopping opportunity. Suits made from reliable English tweeds, in small brown pattern designs; nicely tailored in good-fitting, single-breasted, three-button sacque style. Sizes 36 to 44. Regular price \$10.50. Monday selling . . . 7.95

YOUTHS' FIRST LONG PANT SUITS, \$6.95. Made from durable English tweeds, in a good assortment of small gray patterns; cut in a specially good young man's sacque style, with fashionably cut vest and trousers. Sizes 33 to 36. Monday . . . 6.95

ENGLISH TWEED WATERPROOFS, \$12.00. Double purpose coats; the outside of English tweeds, in plain gray; fancy check back; made roomy and fits well; close-fitting collar, and is single-breasted; 48 inches long; sizes 36 to 44. Monday . . . 12.00

ENGLISH TWEED TROUSERS. Durable English tweeds, in a splendid assortment of patterns; strongly tailored; sizes 32 to 44. Monday selling . . . 2.00

Furnishings for Men

50c and 59c Neglige Shirts at 33c. Plain or fancy stripes of blue, black or helle; laundered cuffs; coat style. Sizes 13 1/2 to 16 1/2. Monday . . . 33

Men's Balbriggan Underwear, natural shade; shirts and drawers. Sizes 34 to 40. Monday . . . 19

Light Weight Cashmere Underwear, Manchuette's French health make; shirts and drawers; sizes 34 to 44. Monday . . . 98

Flannelette Nightrobes, various stripes; collar attached; sizes 14 to 19. Special . . . 59

Flannelette Pyjamas, in stripes, high military collar, silk frogs. Sizes 34 to 44. Special . . . 98

Kodaks

The Camera Circle is located adjoining the Book and Stationery Department. We carry the Eastman line and all supplies. Leave your films any day before 4 o'clock and we will have them developed and printed for you by 8 o'clock the following day. Enlargements made from your small snapshots. Bring your Easter pictures to us to be developed and printed.

MARKET Telephone Adelaide 6100

- MEATS. Sirloin Steak, finest Easter beef. Special, Monday, per lb. . . . 35

"Victor" Boots



Style 0471. This is one of the latest arrivals in "Victor" Boots, made of beautiful many tan calf, English lace style, blind eyelets and four hooks at top, flange heel, English last, welt soles, neat double-row stitched tips, a boot of correctness plus distinction. Price . . . 5.45

Special for Men

427 pairs standard boots, leathers are patent calf, gunmetal calf, dongola kid, and tan calf, button and blucher style, plenty of good sizes to fit every foot. Formerly priced from \$4.50 to \$6.00. Monday . . . 3.24

In Other Departments

Big values in Home Furnishings—Carpets, Draperies and Furniture.

Splendid displays of Dress Goods and Silks.

Ready-to-Wear for Women—All the new styles in Suits, Dresses, Skirts, Underwear, Corsets, Blouses, etc.—Some unusual prices today.

OFFICE... Excellent... will... PRO... CA... NI... IT... ALL... HIS... AT... Ottawa... York... INTER... Colonel... Befo... By a Staff... OTTAWA... ley Allison... guard, coo... his Ottawa... of New T... Chateau... noon, who... went direc... closed... over since... Only a... few per... the capita... lion, who... understand... upon the... Dr. Van... New York... friends of... press the... a critical... C... Lawyer... the report... client... man" he... tired from... anxious... tion with... him, and... that he... just now... Allison... town, ear... tapes and... delayed i... It is p... not app... stand bet... to clear... the gover... before th... He was r... for back... Su... Allison... vowed i... been ser... plained h... sooner... master at... subpoena... Allison's... ary 24... It is u... new to... mission... man of t... His app... only by... fying ce... necting... O... F... made a... and not... driven... In con... air, not... cover a... aeropla... way sta... troops... man st... O... impelli... Verdun... the ana... its failu... push t... confus... up add... Germa... counte... the fo... smaller... Their c... French... T... genera...