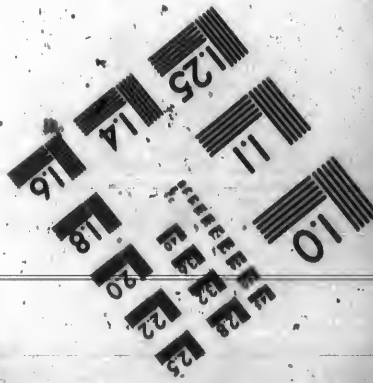
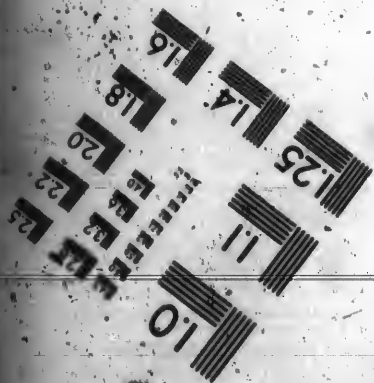
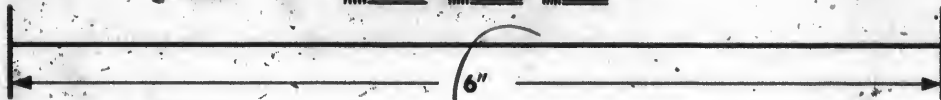
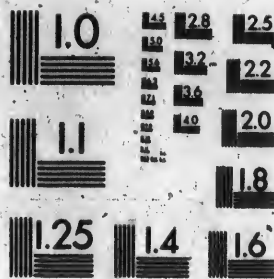


**IMAGE EVALUATION
TEST TARGET (MT-3)**

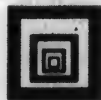


**Photographic
Sciences
Corporation**

23 WEST MAIN STREET
WEBSTER, N.Y. 14580
(716) 872-4503

**CIHM/ICMH
Microfiche
Series.**

**CIHM/ICMH
Collection de
microfiches.**



Canadian Institute for Historical Microreproductions / Institut canadien de microreproductions historiques

© 1987

The copy filmed here has been reproduced thanks to the generosity of:

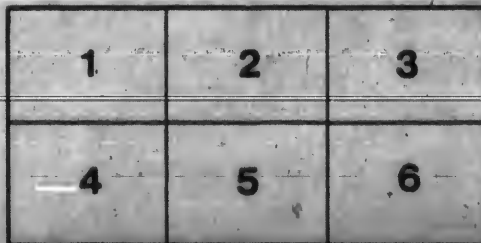
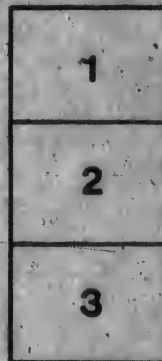
D. B. Weldon Library
University of Western Ontario
(Regional History Room)

The images appearing here are the best quality possible considering the condition and legibility of the original copy and in keeping with the filming contract specifications.

Original copies in printed paper covers are filmed beginning with the front cover and ending on the last page with a printed or illustrated impression, or the back cover when appropriate. All other original copies are filmed beginning on the first page with a printed or illustrated impression, and ending on the last page with a printed or illustrated impression.

The last recorded frame on each microfiche shall contain the symbol \rightarrow (meaning "CONTINUED"), or the symbol ∇ (meaning "END"), whichever applies.

Maps, plates, charts, etc., may be filmed at different reduction ratios. Those too large to be entirely included in one exposure are filmed beginning in the upper left hand corner, left to right and top to bottom, as many frames as required. The following diagrams illustrate the method:



L'exemplaire filmé fut reproduit grâce à la générosité de:

D. B. Weldon Library
University of Western Ontario
(Regional History Room)

Les images suivantes ont été reproduites avec le plus grand soin, compte tenu de la condition et de la netteté de l'exemplaire filmé, et en conformité avec les conditions du contrat de filmage.

Les exemplaires originaux dont la couverture en papier est imprimée sont filmés en commençant par le premier plat et en terminant soit par la dernière page qui comporte une empreinte d'impression ou d'illustration, soit par le second plat, selon le cas. Tous les autres exemplaires originaux sont filmés en commençant par la première page qui comporte une empreinte d'impression ou d'illustration et en terminant par la dernière page qui comporte une telle empreinte.

Un des symboles suivants apparaîtra sur la dernière image de chaque microfiche, selon le cas: le symbole \rightarrow signifie "A SUIVRE", le symbole ∇ signifie "FIN".

Les cartes, planches, tableaux, etc., peuvent être filmés à des taux de réduction différents. Lorsque le document est trop grand pour être reproduit en un seul cliché, il est filmé à partir de l'angle supérieur gauche, de gauche à droite, et de haut en bas, en prenant le nombre d'images nécessaire. Les diagrammes suivants illustrent la méthode.

ails
du
odifier
une
image

rrata
to

pelure.
ri à

32X

the presence of the

TREBILCOCK'S HALL, COR. WORTL

OF THE [unclear] DISTRICT OF THE
of [unclear] that in obedience to the
and bearing date the 5th day of [unclear]
the presence of the

TREBILCOCK'S HALL, COR. WORTL

In the City of London, in and the
Township of [unclear]

ON THURSDAY, THE 28th DAY OF

At Eleven o'Clock

For the purpose of electing a person to
Assembly of this Province; and that
allowed in the manner by law preser
Thursday, the 5th day of the month of
the Townships, Wards or Polling Subdi
to be opened and kept according to law
on the day of Nomination. Of all which
to take notice and to govern himself ac

Given under my hand at L
month of May, in the year 1890.

JAN

PROCLAMATION

ELECTORAL DISTRICT OF THE EAST RIDING

TO WHOM

PUBLIC NOTICE IS HEREBY

ELECTED

Of the Electoral District of the East Riding of Middlesex, that in obedience to Her Majesty's command and bearing date the Tenth day of the month of April in the first year of the said Majesty's most Excellent Majesty King Edward the Seventh, in the presence of the said

TREBILCOCK'S HALL, COR. WORTLEY

of the Electoral District of the East Riding of Middlesex, that in obedience to Her Majesty's command and bearing date the Tenth day of the month of April in the first year of the said Majesty's most Excellent Majesty King Edward the Seventh, in the presence of the said

NOTIFICATION

ORDER OF THE COUNTY OF MIDDLESEX

WIT

HEREBY GIVEN TO THE

WITNESSES

the East Riding of the County
Her Majesty's Writ to me directed,
the month of May, 1890, I require
the said Electors at

WATLEY ROAD & BRUCE STREET,

the East Riding of the County
Her Majesty's Writ to me directed

the said electors at

ORTLEY ROAD & BRUCE STREET,

the said polling of the County
of Essex, pursuant to the
order of the Board of Health,
of the 15th day of May, 1890, I require
you said electors at

ORTLEY ROAD & BRUCE STREET,

and County Council's part of the
of Westminster.

Y OF THE MONTH OF MAY, 1890

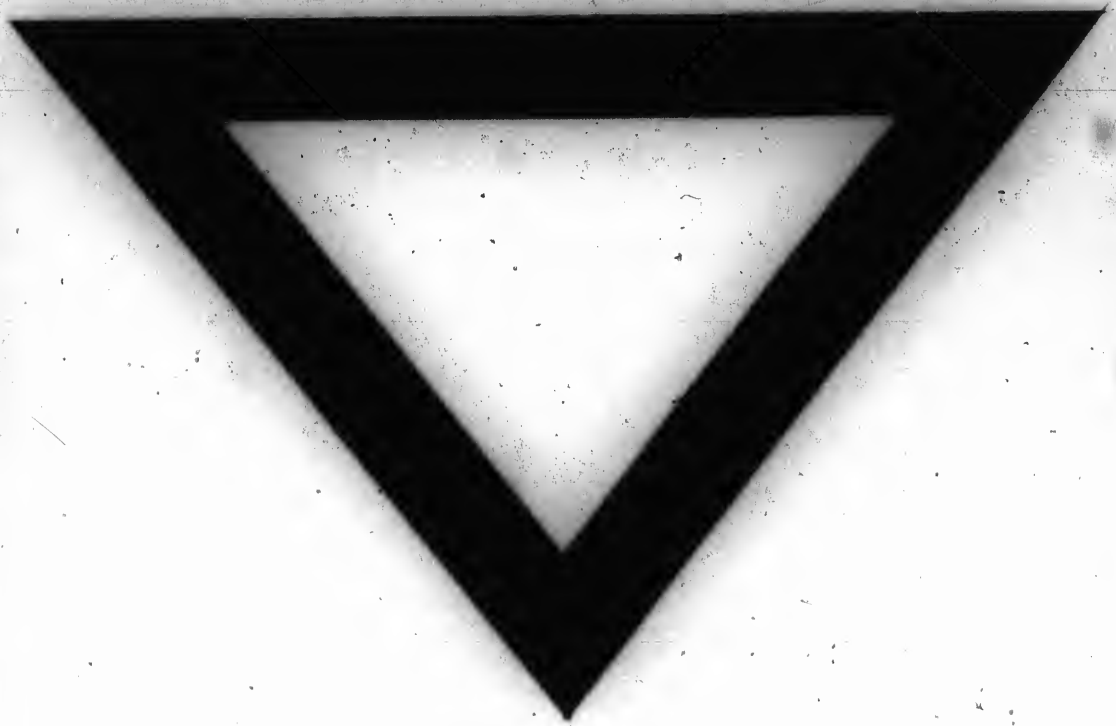
at the Forenoon,

on to represent them in the Legislative
that in case a Poll be demanded and
prescribed, such Poll will be opened on
the 1st of June, in the year 1890, in each of
the subdivisions in which a polling place is
by law, of which due notice will be given
which every person is hereby required
to attend self accordingly.

at London, this 15th day of the

JAMES B. McKILLOP,

RETURNING OFFICER.



22

