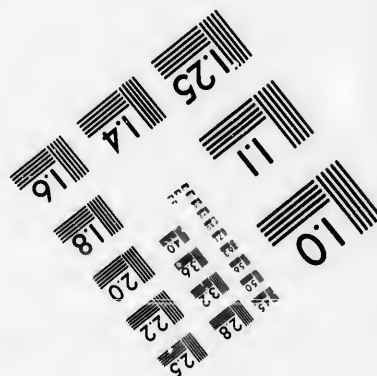
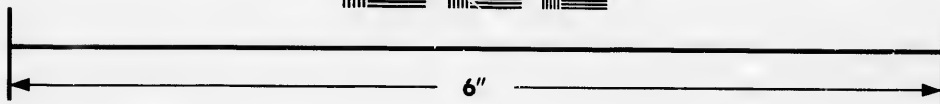
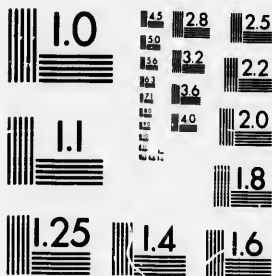


**IMAGE EVALUATION
TEST TARGET (MT-3)**



**Photographic
Sciences
Corporation**

23 WEST MAIN STREET
WEBSTER, N.Y. 14580
(716) 872-4503

**CIHM/ICMH
Microfiche
Series.**

**CIHM/ICMH
Collection de
microfiches.**



Canadian Institute for Historical Microreproductions / Institut canadien de microreproductions historiques

© 1986

Technical and Bibliographic Notes/Notes techniques et bibliographiques

The Institute has attempted to obtain the best original copy available for filming. Features of this copy which may be bibliographically unique, which may alter any of the images in the reproduction, or which may significantly change the usual method of filming, are checked below.

L'Institut a microfilmé le meilleur exemplaire qu'il lui a été possible de se procurer. Les détails de cet exemplaire qui sont peut-être uniques du point de vue bibliographique, qui peuvent modifier une image reproduite, ou qui peuvent exiger une modification dans la méthode normale de filmage sont indiqués ci-dessous.

- Coloured covers/
Couverture de couleur
- Covers damaged/
Couverture endommagée
- Covers restored and/or laminated/
Couverture restaurée et/ou pelliculée
- Cover title missing/
Le titre de couverture manque
- Coloured maps/
Cartes géographiques en couleur
- Coloured ink (i.e. other than blue or black)/
Encre de couleur (i.e. autre que bleue ou noire)
- Coloured plates and/or illustrations/
Planches et/ou illustrations en couleur
- Bound with other material/
Relié avec d'autres documents
- Tight binding may cause shadows or distortion along interior margin/
Le reliure serrée peut causer de l'ombre ou de la distorsion le long de la marge intérieure
- Blank leaves added during restoration may appear within the text. Whenever possible, these have been omitted from filming/
Il se peut que certaines pages blanches ajoutées lors d'une restauration apparaissent dans le texte, mais, lorsque cela était possible, ces pages n'ont pas été filmées.
- Coloured pages/
Pages de couleur
- Pages damaged/
Pages endommagées
- Pages restored and/or laminated/
Pages restaurées et/ou pelliculées
- Pages discoloured, stained or foxed/
Pages décolorées, tachetées ou piquées
- Pages detached/
Pages détachées
- Showthrough/
Transparence
- Quality of print varies/
Qualité inégale de l'impression
- Includes supplementary material/
Comprend du matériel supplémentaire
- Only edition available/
Seule édition disponible
- Pages wholly or partially obscured by errata slips, tissues, etc., have been refilmed to ensure the best possible image/
Les pages totalement ou partiellement obscurcies par un feuillet d'errata, une pelure, etc., ont été filmées à nouveau de façon à obtenir la meilleure image possible.

Additional comments: [Printed ephemera] [4] p. There are some creases in the middle of the pages.
Commentaires supplémentaires:

This item is filmed at the reduction ratio checked below/
Ce document est filmé au taux de réduction indiqué ci-dessous.

10X	14X	18X	22X	26X	30X
<input type="checkbox"/>	<input type="checkbox"/>	<input type="checkbox"/>	<input type="checkbox"/>	<input checked="" type="checkbox"/>	<input type="checkbox"/>
12X	16X	20X	24X	28X	32X

The copy filmed here has been reproduced thanks to the generosity of:

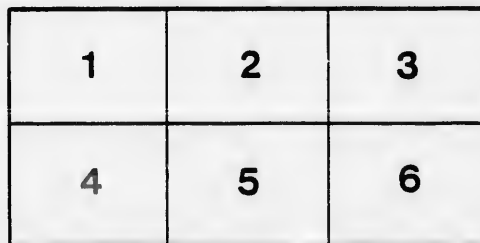
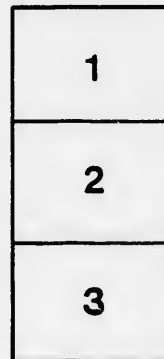
D. B. Weldon Library
University of Western Ontario
(Regional History Room)

The images appearing here are the best quality possible considering the condition and legibility of the original copy and in keeping with the filming contract specifications.

Original copies in printed paper covers are filmed beginning with the front cover and ending on the last page with a printed or illustrated impression, or the back cover when appropriate. All other original copies are filmed beginning on the first page with a printed or illustrated impression, and ending on the last page with a printed or illustrated impression.

The last recorded frame on each microfiche shall contain the symbol \rightarrow (meaning "CONTINUED"), or the symbol ∇ (meaning "END"), whichever applies.

Maps, plates, charts, etc., may be filmed at different reduction ratios. Those too large to be entirely included in one exposure are filmed beginning in the upper left hand corner, left to right and top to bottom, as many frames as required. The following diagrams illustrate the method:



L'exemplaire filmé fut reproduit grâce à la générosité de:

D. B. Weldon Library
University of Western Ontario
(Regional History Room)

Les images suivantes ont été reproduites avec le plus grand soin, compte tenu de la condition et de la netteté de l'exemplaire filmé, et en conformité avec les conditions du contrat de filmage.

Les exemplaires originaux dont la couverture en papier est imprimée sont filmés en commençant par le premier plat et en terminant soit par la dernière page qui comporte une empreinte d'impression ou d'illustration, soit par le second plat, selon le cas. Tous les autres exemplaires originaux sont filmés en commençant par la première page qui comporte une empreinte d'impression ou d'illustration et en terminant par la dernière page qui comporte une telle empreinte.

Un des symboles suivants apparaîtra sur la dernière image de chaque microfiche, selon le cas: le symbole \rightarrow signifie "A SUIVRE", le symbole ∇ signifie "FIN".

Les cartes, planches, tableaux, etc., peuvent être filmés à des taux de réduction différents. Lorsque le document est trop grand pour être reproduit en un seul cliché, il est filmé à partir de l'angle supérieur gauche, de gauche à droite, et de haut en bas, en prenant le nombre d'images nécessaire. Les diagrammes suivants illustrent la méthode.

errata
to

pelure,
n à



32X

Ladies! the only way to get help is through the "Free Press" Want Column.

READ AND REFLECT.

NOTICE TO OUR PATRONS—If the individual members of an audience would stop to think for just an instant, they would undoubtedly appreciate the fact that the habit of rising rows of seats and leaving the theatre before the curtain falls, is a most annoying one, and one that should be stopped. We therefore beg our audiences to kindly remain in their seats until the close of the performance.

Evenings—doors open at 7:30, curtain rises at 8:15 sharp. Matinees—doors open at 1:30; curtain rises at 2:30 sharp.

Plan opens for each attraction two days in advance.



LONDON, ONT.

Seats can be secured by mail, telegraph or telephone. Telephone 732.
Physicians are requested to register at the Box Office, leaving seat number, as this will enable Ushers to find them if called for, without disturbing the audience.
Carriages can be ordered at the Box Office or of the Chief Usher.

Please report to the management any inattention on the part of the employees. Overcoats, packages and umbrellas checked for a small charge.
For all lost articles apply at Box Office. Opera Glasses can be rented by applying to Ushers or at Box Office.

It is strange, but there is a class of people that seem to take an intense delight in bespattering the floor with tobacco juice and in being boisterous and using profane language. These people should know at once that the court is authorized their immediate expulsion, should the management see fit to exercise its rights.

BETWEEN the Acts, and after the Opera is over go to the

OPERA * CIGAR STORE

For Cigars, Cigarettes, Etc.
LOUIS RISK.

W. T. STRONG,

Dispensing *
* * Chemist

184 Dundas Street,
LONDON - - - ONTARIO.

HATS!

—LATEST—

American and English Shapes

In all Colors,

—JUST OPENED.—

Rivard

LONDON'S FASHIONABLE MATTER,

400 Richmond St., LONDON, ONT.

C. J. WHITNEY LESSEE AND MANAGER.
A. E. ROOTE REPRESENTATIVE.
FRED. L. EVANS DIRECTOR OF ORCHESTRA.
GUS. SCHABACKER STAGE MANAGER.
JAMES LAMB CHIEF USHER.

Friday, May 5th, 1893.

* PROGRAMME. *

—THE—

Gorman's *

* HIGH-CLASS *



Minstrels.

Proprietor and Manager, FRANK T. MERRITT.

(Programme Continued on Page 3.)

FINE FOOTWEAR
SPRING AND SUMMER STYLES

—AT THE—

Central Shoe Store

148 DUNDAS STREET.

Our special lines in Ladies' Evening Shoes of the latest New York designs and shades are certainly charming; and our Gentlemen's Selections in all Standard Styles are unsurpassed for Quality and Finish.
High grades in all departments. True merit in every article. Honest quality everywhere. The people are delighted with our goods, and very agreeably surprised at the low prices at which we sell them.

JNO. S. BROWN
TELEPHONE 881.

OUR PROGRAM.

- FOR THE PEOPLE'S PERPETUAL PIC-NIC!
- THE GENUINE—
Heintzman & Co., Pianos!
- THE WORLD-FAMED—
Emerson Pianos!
- THE UNEQUALLED—
Goderich Organs!
- THE PERFECT—
White Sewing Machines!
- AN ENDLESS DISPLAY OF—
Small Musical Instruments!
- A MODEL ASSORTMENT OF—
Strings, Fittings, Music Books, Etc.
- THE ALL-IMPORTANT—
Marriage Licenses!

These and countless other good things can be obtained at "COLWELL'S POPULAR MUSIC HOUSE," 171 Dundas Street, LONDON.

WE KEEP A FIRST-CLASS MUSIC STORE.

Our prices and Terms are the most reasonable. We deal very liberally with everybody. From distant buyers we invite orders by Mail, Telephone or Telegraph.

O. P. M. H. Leads all Competitors.
CHAS. F. COLWELL, Proprietor.

The only place in the City to get the latest

SCARFS.

Burns

* The Furnisher.

A MAN

Wants to see you Between Acts

JERRY McDONALD'S

Across the Road.

181 KING STREET.

If you want the best take the "Free Press," all the news.

Burns

* * SAYS
That the D B. Sag Suit
Will lead this Fall.

AND HE IS RIGHT.

GREAT PRIZE SALE

Every Cash Customer buying One Dollar's
worth or more of

WALL PAPER,

WINDOW SHADES,

CORNICE POLES,

ARTISTS' MATERIALS,

PICTURE FRAMES,

PICTURES,

ETC., ETC., ETC.

Stands the chance of securing a Prize worth from \$1.00
to \$20.00 according to amount of purchase.

E. N. HUNT,
190 DUNDAS ST., LONDON.

Between the Acts.

Man (rising wearily to let late comer pass to his seat in the theater): "This eternal getting up is really annoying." Late Comer: "I know it is. That is the reason I never come in myself till the curtain is up."—*Texas Siftings.*

Actors are charitable. The record of their humanitarianism is wide horizoned. Their giving does not restrict itself to their own kind, but is made conspicuous in every line of outgo for sweet charity's sake. The public should recognize that generosity and on all fitting occasions reciprocate it.

The editor sat on a hard-bottom chair, trying to think a thought, and he plunged all his fingers about through his hair, but not one topic they brought. He had written on temperance, tariff and trade, and the prospect of making a crop, and joked about making ice cream and weak lemonade, till his readers had told him to stop. And weary of thinking, sleep came to his eyes, and he pillowed his head on the desk, when the thoughts which awake had refused to arise, came in troops that were strong and grotesque. And as the ideas singly float, he selects the bright one of the tribe; and this is the gem which, while dreaming he wrote:—"Now is the time to subscribe."—*Eaton Rapids Herald.*

HELPING HIM OUT.

He was a bashful lover and had courted her long. She knew he loved her and knew that he was afraid to propose. She resolved to help him out.

"When I get married I hope to see you at my wedding," she said.

"Heavens!" he gasped, "I hoped to marry you myself."

"Well," she rejoined, as her cheeks flushed to the hue of a rosy sunset, "I meant I hoped to see you there at the groom." Then he fainted with joy.—*New York Press.*

Some careful person has estimated that there are 500,000 hairpins in daily use, not counting any of those the stable man picks up the next morning on the cushions of the sleigh.—*Boston Globe.*

Marshall's * Mammoth * Livery

IS THE LARGEST AND THE OLDEST
ESTABLISHMENT IN THE CITY.

DOES THE LEADING BUSINESS IN

Carriages, Cabs, Coupes, *
* Victorias, Busses, Etc.

Every kind of Conveyance can be had there on the
shortest notice, by Telephone No. 436.

JAS. S. MARSHALL, Proprietor.

Dundas Street. London, Ont.

LONDON Bill Posting Agency

BELTON & ROOTE, Proprietors.

BILL POSTING

Distributing General Advertising Agents

Controls all the Bill Boards and Dead Walls throughout
the City. Population of City, 40,000.

All orders for Bill Posting, Distributing, Card Tacking
and General Advertising for Western Ontario will
receive prompt attention.

OFFICE: BOX OFFICE, OPERA HOUSE.

For Fashionable WELL MADE SUITS

... CALL ON ...

Burns

The Tailor,

Dundas Street.

Artistic * Floral * Design

EITHER WEDDING, PRESENTATION, DINNER TABLE, OR FUNERAL.

GO TO DILLOWAY,

The Leading Florist.

248 Dundas Street.

Choicest Cut Flowers Always on Hand.

TELEPHONE 587.

If you see it in the "London Free Press" it is so.

◀AFTER THE PERFORMANCE▶

—STOP AT—

HARRY McKENNA'S,

—FOR—

Choice Havana Cigars &
* * Tobacco Sundries.

225 Dundas Street

Always Open After Performance.

SMITH BROS.

**Plumbers,
Steam and Gas Fitters.**

ESTIMATES FURNISHED ON APPLICATION.

All Work Warranted. Terms Moderate.

376 RICHMOND STREET.

(Opposite Masonic Temple.)

Telephone No. 538.

THE TECUMSEH,

London, Ontario.



Leading Hotel of Western Ontario.

Large Sample Rooms Free of Charge.
Baggage and Passenger Elevator.

Only one Block from the Grand Opera House.

C. W. DAVIS,
PROPRIETOR.

White · Sulphur · Springs · Baths

FAMOUS HEALTH REPORT.

The Saratoga of Canada.

IN CONNECTION WITH THE HOTEL.

Great Attraction to Visitors Seeking Health.

C. W. DAVIS, Treasurer. A. D. HOLMAN, Manager

* THE LATEST ENGLISH *
Collars, · Cuffs · and · Shirts.
ALL SIZES ALWAYS IN STOCK.

Burns

—DUNDAS STREET—

PROGRAMME CONTINUED.

New and Handsome First Part,

"CRUISE OF THE NEPTUNE."

CAPTAIN YARDARM.....Mr. FRANK FARRELL
BO'SWAIN SPLICE.....Mr. JOHN E. GORMAN
Officers, Sailors Midshipmen and Marine Band by entire company.
GRAND OPENING CHORUS.....FULL COMPANY

CAST.

New Eccentric Sugar-Cane Dance.

Messrs. John E. and George Gorman, Edward Garvie and Charles Whalen.
Remarks—Pertinent and otherwise.....Thomas Evans

"She"—comic refrain.....Mr. Edward Garvie
"He Was a Soldier".....Mr. Alex. Cameron
George Gorman's funny Irish stories, dialect imitations.....Mr. Thomas Evans
"Parodies".....Mr. Delors J. Harper
The Smuggler.....Mr. Delors J. Harper
"The Gay Marines" arranged by John E. Gorman and portrayed by Whalen,
Thompson, Nash and John E. Gorman.
Edward Garvie relates a Sailor's Experience on Land.
Billy Lyons as the Modern Belle.

A few Humorous Pointers by John E. Gorman as Bo'swain's Splice.

Velvet and Rags.....Mr. Geo. Brunton

Geo. Gorman in specialty, introducing the famous negro song, "When the Days Grow Longer," with a new character dance.

THREE MINUTES INTERMISSION.

The High-Class Specialist

EVANS

In his Elegant, Refined and Bizarre Entertainment.

Grand and Superb Marching Act,

"GATHERING OF THE CLANS."

Intricate Evolutions, Artistic Groupings, Marvellous Musket Drills.

Programme Continued on Page 4.

—RECEIVED BY—

BELTZ

ENGLISH—LINCOLN AND BENNETT HAT

" WOODRUM HAT

" COOKSEY HAT

" STANLEY HAT

AMERICAN—DUNLOP HAT

" MILLER'S HAT.

" YEONN'S HAT

Beltz's Spring Styles in Above Celebrated Makes.

THE LEADING JEWELRY HOUSE
OF LONDON,

—FOR—

**Diamonds, Watches, ·
· · and Fine Jewelry.**

OPERA GLASSES FOR RENT.

THOS. GILLEAN,

402 Richmond Street.

Issuer of Marriage Licenses.

For Fine Finished Artistic Photos

—GO TO—

Westlake's

* **Famous Studio**

201 Dundas Street.

Get the Latest Novelties.

Photo Etchings and Artistic Finish.

STUDIO ALL ON GROUND FLOOR.

City Views can be had.

Phone 571.

Wallace's Dining Hall

AND CONFECTIONERY.

354 Richmond Street.

Lunches at all hours.

Hot Tea and Coffee.

Oysters in every style.

Choice Cakes,

Candies, Etc.

GIVE US A CALL.

OFFICE RESTAURANT

Opposite the Masonic Temple, Richmond St.

CHOICE WINES,

LIQUORS, ALES,

CIGARS, ETC.

Restaurant on the European Plan.

OYSTERS IN EVERY STYLE.

D. SARE,

Proprietor.

Look out for the "London Free Press" on all early morning Trains.

VASELINE.

EVERYBODY knows the great value of this remedy in the household, but everybody does not know that the imitations of it, which some second class druggists dishonestly palm off on their customers, have little or no value. What should be understood by the public is, that it is not a mere question of comparative value between "Vaseline" and the imitations, but that the imitations do not effect the wonderful healing results of the world renowned "Vaseline," and that they are not the same thing made in the same way. Besides this, many of the imitations are harmful, irritant and not safe to use, while true Vaseline is perfectly harmless.

Perfect safety therefore lies in buying only original packages put up by and marked with our name.

CHESEBROUGH M'FG CO.

•• LADIES' TAILOR-MADE ••
COSTUMES & RIDING HABITS.

Burns

154 Dundas Street.

PROGRAMME CONTINUED.

EDWARD GARVIE,

A Comedian of Recognized Talent in Original Specialties.

The Characteristic Plantation Song and Dance,

"SUNRISE ON THE BAYOU,"

Interpreted by John E. Gorman, Frank Farrell, Messrs. Whalen and Nash, Morgan, Evans, Connor, Johnson, Thompson, Cameron, Brunton, Winthrop, McLeod, Eaton and Gist.

P. J. KENYON,

Who charms and thrills by his wonderful equilibrium upon the high pedestal

The performance concluding with a production of the famous operetta,

THE GOLDEN BALL.

Libretto by James Gorman. Composed by Louis A. Miller.
Colonel Roger Gilhooly, Ambassador from China..... Mr. George Gorman
Princess Vinegarino, Sister of the King of Siam..... Mr. John E. Gorman
Princess Ceptaloni, Sister of the King of Siam..... Mr. Billy Lyons
Samona Kakona, King of Siam..... Mr. Edward Garvie
Constantine Phaukdona, King's Adviser..... Mr. Thos. Evans
U-Tong Gugfaker, Magician..... Mr. James Gorman
Ma-go-lo-rum, King of Africa..... Mr. Frank Farrell
Sebastio, attendant on the King..... Mr. George Nash
Kem-bo-ba, { Soothsayers, { Mr. P. M. Thompson
Fam-bo-go, { Mr. Charles Whalen
Morphi-Tosti, Queen of Dance..... Mr. Frank Clark
Lung Strong, Court Crier..... Mr. John Morgan
Bigo Heads, a Komical Cuss..... Mr. Lincoln Rowe

IMPORTANT.—The performances at this Theatre commence at 8:15 sharp in the evenings, and 2:15 sharp at matinees, and the public are respectfully invited to be in their seats prior to the hour named.

Opera Glasses can be rented by applying to Ushers or at Box Office.

*** THE PIANO ***

Used in the Orchestra is from the

GERHARD HEINTZMAN Co.

69 and 75 Sherbourne St., Toronto.

LONDON WAREROOM: 226 DUNDAS STREET.

W. T. STRONG,

Dispensing *
* * Chemist

184 Dundas Street,

LONDON, . . . ONTARIO.

Parisian Steam Laundry

73 and 75 DUNDAS ST.



Laundry work transferred free of charge to and from Toronto, Hamilton, Brantford, Woodstock, Stratford, Guelph, London, St. Thomas, Chatham, Windsor and Sarnia.

J. K. SPRY, Manager.

FROM A HEN COOP TO A MANSION

Every person contemplating the erection of anything, from a hen coop to a mansion, should not fail to call and inspect our stock of

**LUMBER,
LATHS,
SHINGLES,
CEDAR POSTS,
FLOORING and
SIDING,
DRESSED, &c.**

PRICES RIGHT.

Jas. H. Belton & Son

OFFICE AND YARDS:

241 YORK STREET

PHONE 688.

FLOWERS * * *

—FOR—
OPERA OR BALL

—AT—
GAMMAGE'S

Duffield Block, 213 Dundas Street.

FRESH EVERY DAY.

TELEPHONE 807.

NEXT ATTRACTION * * *

Tuesday, May 9th.

WOODSTOCK * * *
AMATEUR

* * * **OPERA CO.**

—IN—
The Gondoliers

—OR—
THE KING OF BARATARIA,

By Permission of R. D'OYLE CARTE

Gilbert & Sullivan's Masterpiece.

CHORUS OF 40 VOICES.

Prices, 25, 50, 75 and \$1.00.

PLAN OPENS TO-MORROW.

