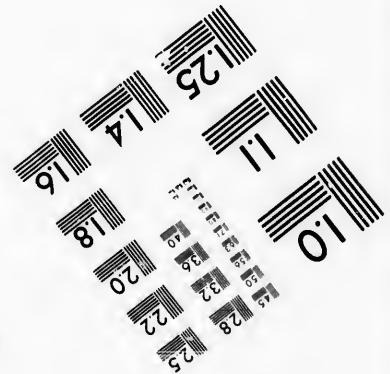
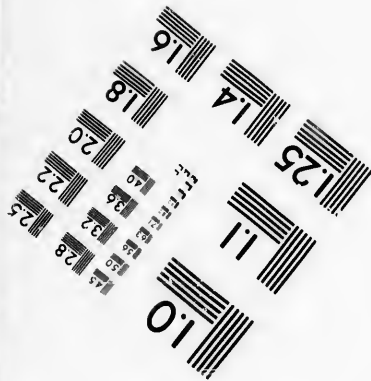
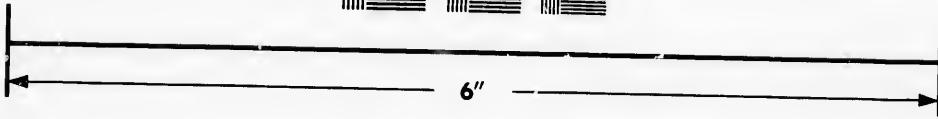
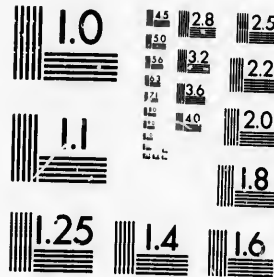


IMAGE EVALUATION
TEST TARGET (MT-3)



Photographic
Sciences
Corporation

23 WEST MAIN STREET
WEBSTER, N.Y. 14580
(716) 872-4503

**CIHM/ICMH
Microfiche
Series.**

**CIHM/ICMH
Collection de
microfiches.**



Canadian Institute for Historical Microreproductions / Institut canadien de microreproductions historiques

© 1986

Technical and Bibliographic Notes/Notes techniques et bibliographiques

The Institute has attempted to obtain the best original copy available for filming. Features of this copy which may be bibliographically unique, which may alter any of the images in the reproduction, or which may significantly change the usual method of filming, are checked below.

L'Institut a microfilmé le meilleur exemplaire qu'il lui a été possible de se procurer. Les détails de cet exemplaire qui sont peut-être uniques du point de vue bibliographique, qui peuvent modifier une image reproduite, ou qui peuvent exiger une modification dans la méthode normale de filmage sont indiqués ci-dessous.

- | | |
|--|--|
| <input type="checkbox"/> Coloured covers/
Couverture de couleur | <input type="checkbox"/> Coloured pages/
Pages de couleur |
| <input type="checkbox"/> Covers damaged/
Couverture endommagée | <input type="checkbox"/> Pages damaged/
Pages endommagées |
| <input type="checkbox"/> Covers restored and/or laminated/
Couverture restaurée et/ou pelliculée | <input type="checkbox"/> Pages restored and/or laminated/
Pages restaurées et/ou pelliculées |
| <input type="checkbox"/> Cover title missing/
Le titre de couverture manque | <input checked="" type="checkbox"/> Pages discoloured, stained or foxed/
Pages décolorées, tachetées ou piquées |
| <input type="checkbox"/> Coloured maps/
Cartes géographiques en couleur | <input type="checkbox"/> Pages detached/
Pages détachées |
| <input type="checkbox"/> Coloured ink (i.e. other than blue or black)/
Encre de couleur (i.e. autre que bleue ou noire) | <input checked="" type="checkbox"/> Showthrough/
Transparence |
| <input type="checkbox"/> Coloured plates and/or illustrations/
Planches et/ou illustrations en couleur | <input type="checkbox"/> Quality of print varies/
Qualité inégale de l'impression |
| <input type="checkbox"/> Bound with other material/
Relié avec d'autres documents | <input type="checkbox"/> Includes supplementary material/
Comprend du matériel supplémentaire |
| <input type="checkbox"/> Tight binding may cause shadows or distortion
along interior margin/
La reliure serrée peut causer de l'ombre ou de la
distorsion le long de la marge intérieure | <input type="checkbox"/> Only edition available/
Seule édition disponible |
| <input type="checkbox"/> Blank leaves added during restoration may
appear within the text. Whenever possible, these
have been omitted from filming/
Il se peut que certaines pages blanches ajoutées
lors d'une restauration apparaissent dans le texte,
mais, lorsque cela était possible, ces pages n'ont
pas été filmées. | <input type="checkbox"/> Pages wholly or partially obscured by errata
slips, tissues, etc., have been refilmed to
ensure the best possible image/
Les pages totalement ou partiellement
obscurcies par un feuillet d'errata, une pelure,
etc., ont été filmées à nouveau de façon à
obtenir la meilleure image possible. |
| <input checked="" type="checkbox"/> Additional comments:/ [Printed ephemera] [4] p.
Commentaires supplémentaires: | |

This item is filmed at the reduction ratio checked below/
Ce document est filmé au taux de réduction indiqué ci-dessous.

10X	12X	14X	15X	16X	18X	20X	22X	24X	25X	26X	28X	30X	32X
										/			

The copy filmed here has been reproduced thanks to the generosity of:

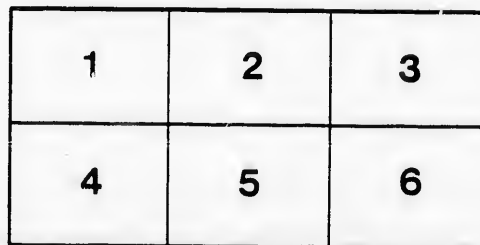
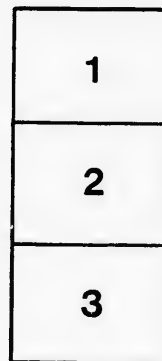
D. B. Weldon Library
University of Western Ontario
(Regional History Room)

The images appearing here are the best quality possible considering the condition and legibility of the original copy and in keeping with the filming contract specifications.

Original copies in printed paper covers are filmed beginning with the front cover and ending on the last page with a printed or illustrated impression, or the back cover when appropriate. All other original copies are filmed beginning on the first page with a printed or illustrated impression, and ending on the last page with a printed or illustrated impression.

The last recorded frame on each microfiche shall contain the symbol \rightarrow (meaning "CONTINUED"), or the symbol ∇ (meaning "END"), whichever applies.

Maps, plates, charts, etc., may be filmed at different reduction ratios. Those too large to be entirely included in one exposure are filmed beginning in the upper left hand corner, left to right and top to bottom, as many frames as required. The following diagrams illustrate the method:



L'exemplaire filmé fut reproduit grâce à la générosité de:

D. B. Weldon Library
University of Western Ontario
(Regional History Room)

Les images suivantes ont été reproduites avec le plus grand soin, compte tenu de la condition et de la netteté de l'exemplaire filmé, et en conformité avec les conditions du contrat de filmage.

Les exemplaires originaux dont la couverture en papier est imprimée sont filmés en commençant par le premier plat et en terminant soit par la dernière page qui comporte une empreinte d'impression ou d'illustration, soit par le second plat, selon le cas. Tous les autres exemplaires originaux sont filmés en commençant par la première page qui comporte une empreinte d'impression ou d'illustration et en terminant par la dernière page qui comporte une telle empreinte.

Un des symboles suivants apparaîtra sur la dernière image de chaque microfiche, selon le cas: le symbole \rightarrow signifie "A SUIVRE", le symbole ∇ signifie "FIN".

Les cartes, planches, tableaux, etc., peuvent être filmés à des taux de réduction différents. Lorsque le document est trop grand pour être reproduit en un seul cliché, il est filmé à partir de l'angle supérieur gauche, de gauche à droite, et de haut en bas, en prenant le nombre d'images nécessaire. Les diagrammes suivants illustrent la méthode.

ire
détails
es du
modifier
er une
filmage

es

errata
to

pelure,
n à

32X

LONDON: PIP & UNIC. CO.

MICHIGAN, OHIO
CANADIAN CIRCUIT
EIGHTEEN
THEATRES

CLEVELAND, CINCINNATI, BUFFALO,
DETROIT, TORONTO,
TOLEDO, LONDON, HAMILTON,
WOODSTOCK, SAGINAW,
GRAND RAPIDS, BAY CITY AND
JACKSON.



C. J. WHITNEY. A. E. ROOTE. ONTARIO.
LESSEE. MANAGER



W. SMITH.

E. HOLLAND.

W. S. PARTRIDGE.

SMITH & BROS.

THE LEADING
SANITARY
PLUMBERS
AND
HEATING
ENGINEERS
OF
WESTERN
ONTARIO.

376
RICHMOND STREET,

LONDON.

OPPOSITE GRAND OPERA HOUSE BUILDING.

A full stock of Supplies always on hand.

TELEPHONE 638.

(London Printing and Litho. Co.)

LADIES! THE ONLY WAY TO GET HELP IS THROUGH THE "FREE PRESS" WANT COLUMN.



**Parisian
Steam
Laundry**

73 & 75 DUNDAS STREET.

BRANCH OFFICES:

226 Dundas St. 752 Waterloo. 410 Hamilton Rd.
280 " " 572 Pall Mall. 251 Wellington.
310 " " 389 Richmond. 338 Ridout.
332 " " 485 " "

J. K. SPRY, Manager.

HUESTON'S

**LIVERY,
Goupe & Gab Stables**
WELLINGTON STREET.

Finest Horses and Carriages in the City.

OPEN DAY AND NIGHT. TELEPHONE 441.

ROBT. HUESTON,
Proprietor.

H. McKENNA,

-FOR-

Choice Cigars, Tobaccos

AND PIPES.

ALWAYS OPEN

..... AFTER THE OPERA.

225 DUNDAS STREET.

RIVARD

The Leading Hatter
and Furrier

HAS THE FINEST STOCK OF

FURS

IN THE CITY TO SELECT FROM.

HIS PRICES ARE RIGHT!

Rivard

London's Fashionable Hatter
and Furrier,

400 RICHMOND-ST.

WILLIAMS' Pianos CANADA'S FAVORITE

Cannot be excelled for touch, singing quality, delicacy and great power of tone, with highest excellence of workmanship.

ALL THE LATEST VOCAL AND INSTRUMENTAL MUSIC RECEIVED AS PUBLISHED.

Musical Instruments of all kinds, Strings and Fittings
AT LOWEST PRICES.

R. S. WILLIAMS & SON, 171 DUNDAS STREET,
LONDON, ONT.

J. A. CRODEN, Manager.

PROGRAMME

ONE WEEK, COMMENCING MONDAY,
FEBRUARY 5TH. 1894

MATINEE SATURDAY.

Friday, February 9th,

GRAND GALA NIGHT

Testimonial Benefit to Ida Van Cortland

CANADA'S FAVORITE ACTRESS,

Ida Van Cortland

And the Magnificent Organization of
Players known as

TAVERNIER'S STOCK COMPANY

Aided by every requisite of Scene, Costume, Music, Dancing,
Singing, Calcium Lights and Appointments.

Thursday Night, Feb. 8th.

Dion Boucicault's Irish drama, entitled

The Wicklow Wedding

Arrah Meelish, Ida Van Cortland
Shaun, the post, a Wicklow Carman, Richardson Cotton
Michael Fenny, a process server, Lew A. Warner
Col. Bogenal O'Grady—"the O'Grady", Howard Hall
Beemish McCoull—"the McCoull", John E. Miles
Major Coffin
The Irish Sec'y of State, } Geo. H. Howson
Oiney Farrell, } F. A. Millis
The Sergeant, }
Winterbottom, } M. B. Streeter
Fanny Powers, } Daisy Beverly
Katty, } Nellie Morgan
Soldiers, Peasants, etc.

Act I.—The Arrest. Act II.—The Trial. Act III.—The
Secretary's Blunder. Act IV.—The prison. The escape.
Re-united.

NOTE.—Incidental to the play specialties will be introduced in scene
5, act 1, by Mr. M. B. Streeter, Miss Lillian Smith and the entire com-
pany. LITTLE PANSY will appear between Acts 2 and 3.

COMPLIMENTARY BENEFIT TO MISS VAN CORTLAND to-morrow night, Feb. 9th.

MATINEE ON SATURDAY.

(Programme continued on next page.)

SOMETHING NEW.

Opera English & Canadian
Caramels, Chocolate Creams.

VERY FINEST Olives in Bulk.
French Crystalized .. Fresh Roquefort Cheese..
FRUITS.

FITZGERALD, SCANDRETT & CO.
169 Dundas Street.

ESTABLISHED 1831.

H. DAVIS & SON,
WATCHMAKERS
AND
JEWELLERS

DEALERS IN
Watches, Clocks, Jewellery, Spectacles,
Silver Plated Ware, &c.

170 DUNDAS ST., LONDON, ONT.

W. T. STRONG

Dispensing
Chemist,

184 Dundas Street,
LONDON, - ONTARIO.

BROWN'S

Central Shoe Store,
145 DUNDAS ST.



We inventory February 20th, and are determined
to reduce our Stock as much as possible before
that date. To do this, we have cut down prices to a
figure heretofore unheard of for such quality of
goods. This Great Reduction will place the best
selected stock of Staple and High-Grade Shoes
within the reach of all.

REMEMBER, WE KEEP NO INFERIOR OR

SHODDY GOODS.

EVERY LINE OF
BOOTS, SHOES, SLIPPERS, RUBBERS, OVERSHOES,
OVERGAITERS, LEGGINGS, MOCCASINS, ETC.,
IS THE BEST OF ITS KIND.

Our position enables us to sell cheaper than any
other shoe store in this western section; but this
Special Reduction cannot fail to further convince
the Public, that for reliable footwear in all Stan-
dard Styles, "Brown's is undoubtedly the Cheapest."

THIS CUT-DOWN-PRICE

—will also apply to our—

HANDSOME AMERICAN DESIGNS IN
LADIES' AND GENTS' DRESS SHOES,
WALKING, SKATING and HOCKEY BOOTS;
Also our Complete, and unexcelled (for Style and
Finish) assortment of YOUTH'S, MISSES', BOYS', GIRLS'
and BABY SHOES.

NO RESERVE.

John S. Brown,
TELEPHONE 881.

IF YOU WANT THE BEST, TAKE THE "FREE PRESS." ALL THE NEWS!

—GO TO—
SOUTHCOTTS
 —FOR YOUR—
Overcoating
 —OR—
FALL + SUITING
 AND GET SATISFACTION AT
 CLOSE PRICES.
361 RICHMOND STREET.

I-I-I-I-I-I-I-I-I-I

PRINTERS
 LITHOGRAPHERS
 ENGRAVERS

The
London
Printing and
Lithographing
Co'y,

SOOOFORSO TO FREE PRESS
 PRINTING AND LITHO.
 DEPARTMENTS.

OFFICE,
 "FREE PRESS"
 BUILDING.

BEST WORK
 AT MODERATE
 PRICES.

I-I-I-I-I-I-I-I-I-I

TECUMSEH HOUSE
 LONDON.



Directly opposite G.T.R depot;
 street railway past the doors;
 convenient to all the wholesale
 and retail business houses of
 city, making it the most desir-
 able hotel in the city; elevator,
 and heated throughout with
 steam.

Porter in attendance on
 arrival of all trains.

RATES, \$2.00 AND \$2.50
 PER DAY,

ACCORDING TO LOCATION.

No Extra Charge For Baggage.

C. W. DAVIS, PROP.

LATEST SHAPES.

In American and English

Spring Hats

JUST OPENED.

GRAHAM BROS.,

Leading Hatters and Furnishers.

«Programme Continued.»

Friday Night and Saturday Matinee.

THE GREAT PRODUCTION, ENTITLED

Michael Strogoff

Marfa Strogoff, Mother of Michael, - Ida Van Cortland
Nadare, a Russian Gypsy..... Daisy Beverly
Nadia Feodor, a Russian Girl..... Lillian B. Smith
Nladam Gogall, Landlady..... Nellie Morgan
Michael Strogoff, Courier to the Czar..... Howard Hall
Ivan Ogareff—the traitor..... Richardson Cotton
 The Czar, } Brothers..... John E Miles
 The Grand Duke }
 Benjamin Franklin Blunt, an American Correspondent
 M. B. Streeter
 Bonaparte Laidlaw—an English Correspondent, Lew A. Warner
 Gen. Keizoff..... Geo. H. Howson
 Post Agent..... Geo. H. Howson
 Emir Feofar—Ruler of the Tartars..... J. Miles
 Tartar Chief..... Frank Mills
 Telegraph Operator..... G. H. Howson
 Tartars, Peasants, Soldiers, Etc.

Act I.—Moscow Palace of the Czar. Act II.—Post Stations on the
 Siberian frontier. Act III.—City of Kolvvan. Act IV.—The Tartar
 Camp. Act V.—The road to Ierkuisk. Act VI.—Palace of the Grand
 Duke at Ierkuisk.

NOTE.—Incidental to this play, Specialties will be introduced in Act
 II. by Mr. Streeter, and in Act IV. by Little Pansy and Miss Beverly.

Matinee To-morrow, 2.30

SATURDAY NIGHT, FEBRUARY 10TH.

THE LAUGHABLE COMEDY, ENTITLED

PECK'S BAD BOY

CAST OF CHARACTERS.

Henry Peck—the bad boy..... M. B. Streeter
 Judge Peck—the bad boy's pa..... Howard Hall
 Lush Scubbs—the bad boy's friend..... Richardson Cotton
 Philip Manning—the bad boy's sister's beau..... John E. Miles
 Stump Hawkins, Terror }
 Jacob Strauss, Policeman }..... Lew A. Warner
 Patrick Boggs, Grocerman }
 Aaron Hobbs, Persecutor }..... Frank Mills
 Billy Harris, Bad Boy's chum..... Geo. H. Howson
 Mrs. Peck, his ma..... Nellie Howard
 Jessie Peck, his sister..... Daisy Beverly
 Becky Stubb, his girl..... Viola Hall

SYNOPSIS.

Act I.—The Grocery Store. Act II.—The Murder. Act III.—The
 Trial. Act IV.—At Home.

NOTE.—Incidental to this play, Specialties will be introduced in
 Act I. by Mr. B. Streeter. LITTLE PANSY will appear between
 Acts I. and II.

(Programme continued on last page.)

McLEAN'S HARDWARE

—FOR—

Bissell's Carpet Sweepers.

WE CAN SHOW YOU TWELVE DIFFERENT STYLES SAME
 AS ARE NOW DISPLAYED BY THE BISSELL COM-
 PANY AT THE WORLD'S FAIR.

CALL AND SEE THESE GOODS

—AT—

McLEAN'S HARDWARE,

151 Dundas Street.

Wm. Stevely & Son,

—THE LEADING DEALERS IN—

STOVES, RANGES,

..AND..

HOUSE FURNISHING GOODS.

OUR STOCK IS THE LARGEST.

OUR PRICES THE LOWEST.

362 RICHMOND STREET.

'PHONE 452.

W. T. STRONG,

Dispensing

Chemist,

184 DUNDAS ST.,

LONDON, ONT.

..FOR..

Fine Etchings....

—AND—

Engravings

—TRY—

O. B. GRAVES,

222 DUNDAS STREET.



BRENER BROS
 LONDON ONT

FOR SALE AT

JOE RANKIN'S

.... OPPOSITE MASONIC TEMPLE.

GLOVES
— IN —
SILK & KID
— IN —
18 to 30 inch,
IN ALL THE NEW SHADES.

TELEPHONE 611.

OPERA
FANS

EVENING GOODS

A. Rolfe

OPERA
HOSE

We show the largest
range of
S.I.L.K.S
IN THE CITY.
OUR NEW **Velour Cloth**
IS THE LATEST.
In all the New Tints,
With Trimming to Match.
FINE DRESSMAKING.

202 DUNDAS STREET.

EDY BROS.

The Artistic Photographers,

— RECEIVED —

Three First Prizes

— AND —

DIPLOMA

For Finest Display of Photography
AT WESTERN FAIR, 1893.

Cabinet Photos, \$3 per doz.

EDY BROS.

214 DUNDAS STREET.

The **HUB**

Restaurant,

203 & 205 DUNDAS STREET.

For a NICE LUNCH after the
Opera, go to the
Hub Restaurant.

Steaks, Chops, Chicken,
Oysters, Etc.

OPEN TILL 12.00 P.M.

J. W. MARTIN, Prop.

(Late of the Martin House)

«Programme Concluded.»

During the evening, incidental to the stage performance,
the ORCHESTRA of the Grand Opera House, under
the direction of MR. FRED. L. EVANS, will
perform the following selections

OVERTURE—"Bohemian Girl," Balfé
SELECTION—"Dorothy," Cellier
LANCERS—"Wang" (by request), Boettger
GALOP—"Comet," Weingarten

The above programme subject to transposition

N. B.—The Orchestra of the Grand Opera House may be secured
for engagements outside the theatre, by applying at or addressing the
Box Office.

The Furniture used on stage is supplied by JOHN FERGUSON & SON,
Furniture Manufacturers.

NEXT † ATTRACTION

Monday Evening, February 12th.

AN OPERA EVENT.

BARNABEE, KARL & MACDONALD'S

Robin Hood Opera Co.

SIXTY HIGH-CLASS ARTISTS.
Superb Chorus of thirty-five.
Superior Operatic Orchestra.
Stageful of Superior Scenery.

Prices:—First two rows Circle, \$1.50; Balance Lower Floor,
\$1.00; Balcony, \$1.00, 75c., 50c.; Gallery, 25c

A FINE PERFORMANCE

is a satisfactory return
for your money, but when
you can get from us a
superior quality of Coal
or Wood at the same price
you would pay for an in-
ferior quality, it is even
more satisfactory. When
in need of "warmth," try
us.

CAMERON'S

421 RICHMOND STREET,
and BURWELL STREET at G. T. R.

FIND YOUR FORTUNE IN LUCKY
SANTO DOMINGO
INVESTMENT BONDS guaranteed by the SANTO
DOMINGO GUARANTY CO.
Allotments take place monthly, and are payable in U. S. gold coin
in sums of \$100,000, \$40,000, \$20,000, etc.
5,692 Bonds paid monthly, aggregating \$574,880. Subscrip-
tion fees, \$10, \$5, \$2, \$1, 50c. and 25c.
Apply to Local Agents or address,
ANTONIO MORA, CITY OF SANTO DOMINGO,
SANTO DOMINGO, D. R.

Roses, Carnations,

Palms,

Ferns, Bulbs,

J. GAMMAGE & SONS,

218 Dundas Street.

INDIAN... CEYLON TEA IMPORTING HOUSE.

NEW BLENDS, DELICIOUS AND ECONOMICAL, AT MODERATE PRICES.

"English Breakfast," "Five o'clock Tea," & "Club House" Blends.
60c. 50c. 45c.

These Blends are standard selections of choice Teas. Highly recommended to
families for their fine quality and economical properties.

S. FUGE,

— IMPORTER OF —
CHOICE TEAS 212 Dundas St.
TELEPHONE 858. LONDON.

