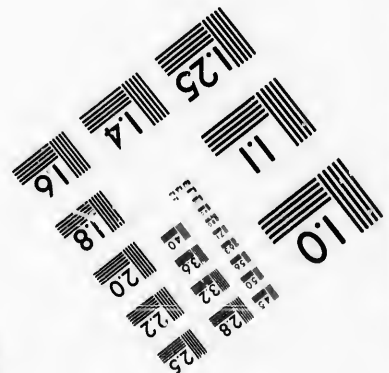
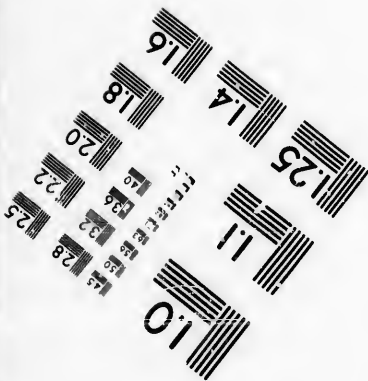
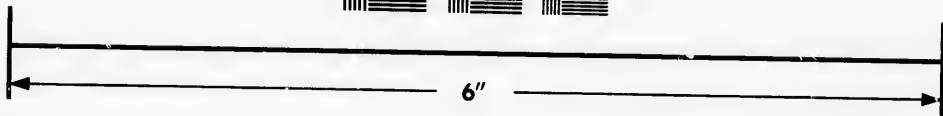
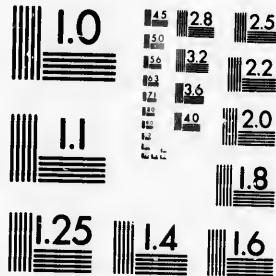


**IMAGE EVALUATION
TEST TARGET (MT-3)**



**Photographic
Sciences
Corporation**

23 WEST MAIN STREET
WEBSTER, N.Y. 14580
(716) 872-4503

**CIHM/ICMH
Microfiche
Series.**

**CIHM/ICMH
Collection de
microfiches.**



Canadian Institute for Historical Microreproductions / Institut canadien de microreproductions historiques

© 1986

Technical and Bibliographic Notes/Notes techniques et bibliographiques

The Institute has attempted to obtain the best original copy available for filming. Features of this copy which may be bibliographically unique, which may alter any of the images in the reproduction, or which may significantly change the usual method of filming, are checked below.

L'Institut a microfilmé le meilleur exemplaire qu'il lui a été possible de se procurer. Les détails de cet exemplaire qui sont peut-être uniques du point de vue bibliographique, qui peuvent modifier une image reproduite, ou qui peuvent exiger une modification dans la méthode normale de filmage sont indiqués ci-dessous.

- | | |
|--|--|
| <input type="checkbox"/> Coloured covers/
Couverture de couleur | <input type="checkbox"/> Coloured pages/
Pages de couleur |
| <input type="checkbox"/> Covers damaged/
Couverture endommagée | <input checked="" type="checkbox"/> Pages damaged/
Pages endommagées |
| <input type="checkbox"/> Covers restored and/or laminated/
Couverture restaurée et/ou pelliculée | <input type="checkbox"/> Pages restored and/or laminated/
Pages restaurées et/ou pelliculées |
| <input type="checkbox"/> Cover title missing/
Le titre de couverture manque | <input checked="" type="checkbox"/> Pages discoloured, stained or foxed/
Pages décolorées, tachetées ou piquées |
| <input type="checkbox"/> Coloured maps/
Cartes géographiques en couleur | <input type="checkbox"/> Pages detached/
Pages détachées |
| <input type="checkbox"/> Coloured ink (i.e. other than blue or black)/
Encre de couleur (i.e. autre que bleue ou noire) | <input checked="" type="checkbox"/> Showthrough/
Transparence |
| <input type="checkbox"/> Coloured plates and/or illustrations/
Planches et/ou illustrations en couleur | <input type="checkbox"/> Quality of print varies/
Qualité inégale de l'impression |
| <input type="checkbox"/> Bound with other material/
Relié avec d'autres documents | <input type="checkbox"/> Includes supplementary material/
Comprend du matériel supplémentaire |
| <input type="checkbox"/> Tight binding may cause shadows or distortion
along interior margin/
La reliure serrée peut causer de l'ombre ou de la
distorsion le long de la marge intérieure | <input type="checkbox"/> Only edition available/
Seule édition disponible |
| <input type="checkbox"/> Blank leaves added during restoration may
appear within the text. Whenever possible, these
have been omitted from filming/
Il se peut que certaines pages blanches ajoutées
lors d'une restauration apparaissent dans le texte,
mais, lorsque cela était possible, ces pages n'ont
pas été filmées. | <input type="checkbox"/> Pages wholly or partially obscured by errata
slips, tissues, etc., have been refilmed to
ensure the best possible image/
Les pages totalement ou partiellement
obscurcies par un feuillet d'errata, une pelure,
etc., ont été filmées à nouveau de façon à
obtenir la meilleure image possible. |
| <input checked="" type="checkbox"/> Additional comments:/
Commentaires supplémentaires: | [Printed ephemera] 1 sheet (vers blank) |

This item is filmed at the reduction ratio checked below/
Ce document est filmé au taux de réduction indiqué ci-dessous.

10X	12X	14X	16X	18X	20X	22X	24X	26X	28X	30X	32X
						✓					

The copy filmed here has been reproduced thanks to the generosity of:

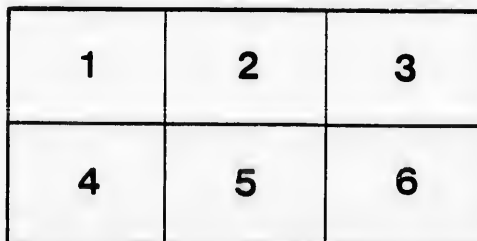
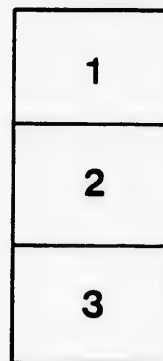
D. B. Weldon Library
University of Western Ontario
(Regional History Room)

The images appearing here are the best quality possible considering the condition and legibility of the original copy and in keeping with the filming contract specifications.

Original copies in printed paper covers are filmed beginning with the front cover and ending on the last page with a printed or illustrated impression, or the back cover when appropriate. All other original copies are filmed beginning on the first page with a printed or illustrated impression, and ending on the last page with a printed or illustrated impression.

The last recorded frame on each microfiche shall contain the symbol \rightarrow (meaning "CONTINUED"), or the symbol ∇ (meaning "END"), whichever applies.

Maps, plates, charts, etc., may be filmed at different reduction ratios. Those too large to be entirely included in one exposure are filmed beginning in the upper left hand corner, left to right and top to bottom, as many frames as required. The following diagrams illustrate the method:



L'exemplaire filmé fut reproduit grâce à la générosité de:

D. B. Weldon Library
University of Western Ontario
(Regional History Room)

Les images suivantes ont été reproduites avec le plus grand soin, compte tenu de la condition et de la netteté de l'exemplaire filmé, et en conformité avec les conditions du contrat de filmage.

Les exemplaires originaux dont la couverture en papier est imprimée sont filmés en commençant par le premier plat et en terminant soit par la dernière page qui comporte une empreinte d'impression ou d'illustration, soit par le second plat, selon le cas. Tous les autres exemplaires originaux sont filmés en commençant par la première page qui comporte une empreinte d'impression ou d'illustration et en terminant par la dernière page qui comporte une telle empreinte.

Un des symboles suivants apparaîtra sur la dernière image de chaque microfiche, selon le cas: le symbole \rightarrow signifie "A SUIVRE", le symbole ∇ signifie "FIN".

Les cartes, planches, tableaux, etc., peuvent être filmés à des taux de réduction différents. Lorsque le document est trop grand pour être reproduit en un seul cliché, il est filmé à partir de l'angle supérieur gauche, de gauche à droite, et de haut en bas, en prenant le nombre d'images nécessaire. Les diagrammes suivants illustrent la méthode.

rrata
o

elure,
à

GOLD RING CONSOLIDATED MINING CO. OFFICE,

December 23rd, 1896.



MR. JOHN A. MOODY,
Mining Broker, London, Ont.

Dear Sir,—

I am instructed by the Board of Directors of the Gold Ring Consolidated Mining Company, to notify you that offers of stock at twenty cents per share will not hold good after January 15th, 1897. That date is fixed because some orders have been given to Brokers, good until then, and it is desired to treat all alike.

As frequent enquiries are made as to the operations of the Company, I am directed to inform you that you are authorized to state that the Board have determined before erecting a large mill, to sink the main shaft of the Rachel Mine to a depth of 400 feet on the vein if necessary to obtain sufficient water for the mill, in order to save, if possible, the cost of hauling ore to the present mill site (85c. per ton).

In the meantime the Board have decided that in view of the amount of money now in the Treasury, the great increase of ore in sight since this Company was organized, and the reports of the increasing value and width of the vein in the Rachel Mine below the 180 foot level, it is not in the interests of the Company to continue to sell stock at so low a price as twenty cents per share.

Yours truly,

(Signed) W. J. WALLACE,

Secretary.



STOCKS HELD BY CLIENTS

500 Shares Smuggler, at.....	25c	1000 Shares Mug Wump, at.....	
2000 " Silverine, at.....	10c	3000 " Silver Bell, at.....	
1000 " Big Three, at.....	10c	2000 " Kohinoor, at.....	
2000 " Yale, at.....	5c	2000 " Imperial, at.....	
5000 " Snowdrop, at.....	3c	5000 " Ibex, at.....	

Par value \$1.00, fully paid and non-assessable. I sell all Standard Stocks. I w

AGENTS WANTED.

IF NO USE TO RECEIVER, KIND

THE GOLD FIELDS



**MINING AND DEVELOPMENT COMPANY
OF ONTARIO, LIMITED.**

CHARTER APPLIED FOR UNDER ONTARIO LAWS.



STOCK FULLY PAID AND NON-ASSESSABLE.

PROVISIONAL DIRECTORS:

EDWARD MORGAN, Esq., Judge of the County Court of the County of York, Toronto.
MILES VOKES, Esq., Merchant, Toronto.
JAMES S. FULLERTON, Esq., Q. C., Corporation Counsel for the City of Toronto.
WILLIAM BARKER NEWSOME, Esq., Merchant, Toronto.

EDWIN WALLACE, Esq., Mining Engineer, Toronto.
ALFRED ROBINSON, Esq., Secretary Western Ontario Commercial Travellers' Association, London, Ont.
E. R. CAMERON, Esq., Barrister-at-Law, London, Ont.
W. J. WALLACE, Esq., Barrister, Toronto.
THOMAS ELLIOTT, Esq., Mayor of Brantford, Ont.

THIS IS A DEVELOPMENT COMPANY

its object being to purchase, develop, and sell mines. Capital is necessary to make mining a success. By combining many small amounts of money, investors have all the advantages of large capitalists, with the additional advantages of skilled engineers and practical mining men employed by this company.

Buying, Developing, and Selling Mines is a quicker way of making money than waiting for mines to pay dividends. This Company will operate principally in Ontario and British Columbia.

Some valuable mining properties have already been secured. Many more mines are being offered this company. Only those that will stand the most thorough expert examination will be purchased and developed. This company has employed experienced mining engineers and practical mining men. If careful management and engineering skill can make this company a success, those who become interested should secure profitable and quick returns.

100,000 shares of Treasury Stock are now offered at Ten Cents per Share—the ground floor price.

Now is the time to buy stock at the first price in a new company and reap the benefit of an early advance.

THE GOLD FIELDS MINING AND DEVELOPMENT COMPANY, OF ONTARIO, LTD.

For further information apply to

JOHN A. MOODY, London, Ont.

BY CLIENTS FOR SALE:

Mug Wump, at.....18c
Silver Bell, at..... 9c
Kohinoor, at.....10c
Imperial, at.....10c
Mex, at.....3½c

4000 Shares Red Eagle, at.....7½c
Colorado Gold Mining and Developing Co. draws
½% dividend 15th January, 1897.....40c
Kootinay Exploration Co.....10c
Great Northern Smelting and Development Co.....25c

standard Stocks. I will buy, sell or exchange, or secure loans on Mining Stocks.

RECEIVER, KINDLY HAND TO A POSSIBLE AGENT OR INVESTOR.

