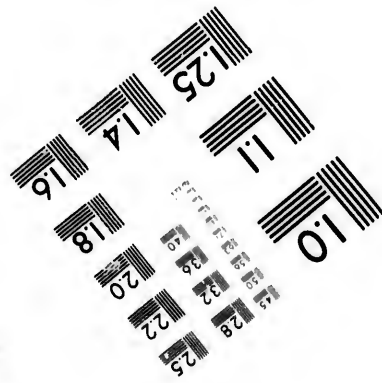
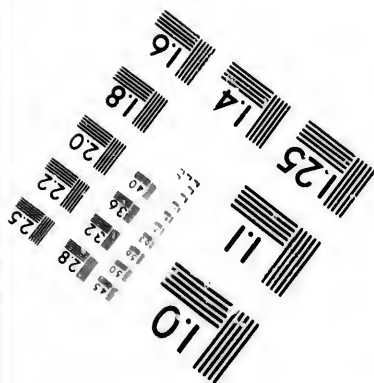
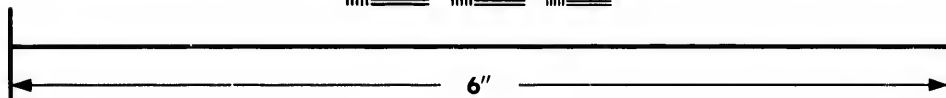
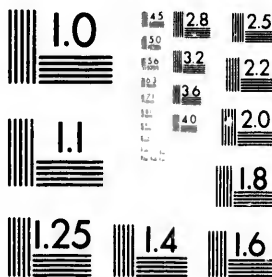


**IMAGE EVALUATION  
TEST TARGET (MT-3)**



**Photographic  
Sciences  
Corporation**

23 WEST MAIN STREET  
WEBSTER, N.Y. 14580  
(716) 872-4503



**CIHM/ICMH  
Microfiche  
Series.**

**CIHM/ICMH  
Collection de  
microfiches.**



**Canadian Institute for Historical Microreproductions / Institut canadien de microreproductions historiques**



**© 1981**

Technical and Bibliographic Notes/Notes techniques et bibliographiques

The Institute has attempted to obtain the best original copy available for filming. Features of this copy which may be bibliographically unique, which may alter any of the images in the reproduction, or which may significantly change the usual method of filming, are checked below.

L'Institut a microfilmé le meilleur exemplaire qu'il lui a été possible de se procurer. Les détails de cet exemplaire qui sont peut-être uniques du point de vue bibliographique, qui peuvent modifier une image reproduite, ou qui peuvent exiger une modification dans la méthode normale de filmage sont indiqués ci-dessous.

- |   |  |
|---|--|
| <input checked="" type="checkbox"/> Coloured covers/<br>Couverture de couleur   | <input type="checkbox"/> Coloured pages/<br>Pages de couleur   |
| <input type="checkbox"/> Covers damaged/<br>Couverture endommagée   | <input type="checkbox"/> Pages damaged/<br>Pages endommagées   |
| <input checked="" type="checkbox"/> Covers restored and/or laminated/<br>Couverture restaurée et/ou pelliculée  | <input checked="" type="checkbox"/> Pages restored and/or laminated/<br>Pages restaurées et/ou pelliculées   |
| <input type="checkbox"/> Cover title missing/<br>Le titre de couverture manque  | <input checked="" type="checkbox"/> Pages discoloured, stained or foxed/<br>Pages décolorées, tachetées ou piquées   |
| <input type="checkbox"/> Coloured maps/<br>Cartes géographiques en couleur  | <input type="checkbox"/> Pages detached/<br>Pages détachées  |
| <input type="checkbox"/> Coloured ink (i.e. other than blue or black)/<br>Encre de couleur (i.e. autre que bleue ou noire)  | <input checked="" type="checkbox"/> Showthrough/<br>Transparence   |
| <input type="checkbox"/> Coloured plates and/or illustrations/<br>Planches et/ou illustrations en couleur   | <input type="checkbox"/> Quality of print varies/<br>Qualité inégale de l'impression   |
| <input type="checkbox"/> Bound with other material/<br>Relié avec d'autres documents  | <input type="checkbox"/> Includes supplementary material/<br>Comprend du matériel supplémentaire   |
| <input type="checkbox"/> Tight binding may cause shadows or distortion<br>along interior margin/<br>La reliure serrée peut causer de l'ombre ou de la<br>distortion le long de la marge intérieure  | <input type="checkbox"/> Only edition available/<br>Seule édition disponible   |
| <input checked="" type="checkbox"/> Blank leaves added during restoration may<br>appear within the text. Whenever possible, these<br>have been omitted from filming/<br>Il se peut que certaines pages blanches ajoutées<br>lors d'une restauration apparaissent dans le texte,<br>mais, lorsque cela était possible, ces pages n'ont<br>pas été filmées. | <input type="checkbox"/> Pages wholly or partially obscured by errata<br>slips, tissues, etc., have been refilmed to<br>ensure the best possible image/<br>Les pages totalement ou partiellement<br>obscurcies par un feuillet d'errata, une pelure,<br>etc., ont été filmées à nouveau de façon à<br>obtenir la meilleure image possible. |
| <input type="checkbox"/> Additional comments:/<br>Commentaires supplémentaires:   |  |

This item is filmed at the reduction ratio checked below/  
Ce document est filmé au taux de réduction indiqué ci-dessous.

10X	14X	18X	22X	26X	30X
<input type="checkbox"/>	<input type="checkbox"/>	<input checked="" type="checkbox"/>	<input type="checkbox"/>	<input type="checkbox"/>	<input type="checkbox"/>
12X	16X	20X	24X	28X	32X

The copy filmed here has been reproduced thanks to the generosity of:

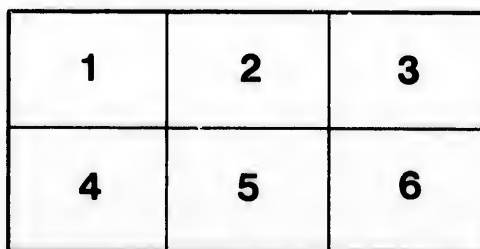
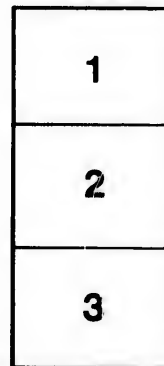
Library of the Public  
Archives of Canada

The images appearing here are the best quality possible considering the condition and legibility of the original copy and in keeping with the filming contract specifications.

Original copies in printed paper covers are filmed beginning with the front cover and ending on the last page with a printed or illustrated impression, or the back cover when appropriate. All other original copies are filmed beginning on the first page with a printed or illustrated impression, and ending on the last page with a printed or illustrated impression.

The last recorded frame on each microfiche shall contain the symbol  $\rightarrow$  (meaning "CONTINUED"), or the symbol  $\nabla$  (meaning "END"), whichever applies.

Maps, plates, charts, etc., may be filmed at different reduction ratios. Those too large to be entirely included in one exposure are filmed beginning in the upper left hand corner, left to right and top to bottom, as many frames as required. The following diagrams illustrate the method:



L'exemplaire filmé fut reproduit grâce à la générosité de:

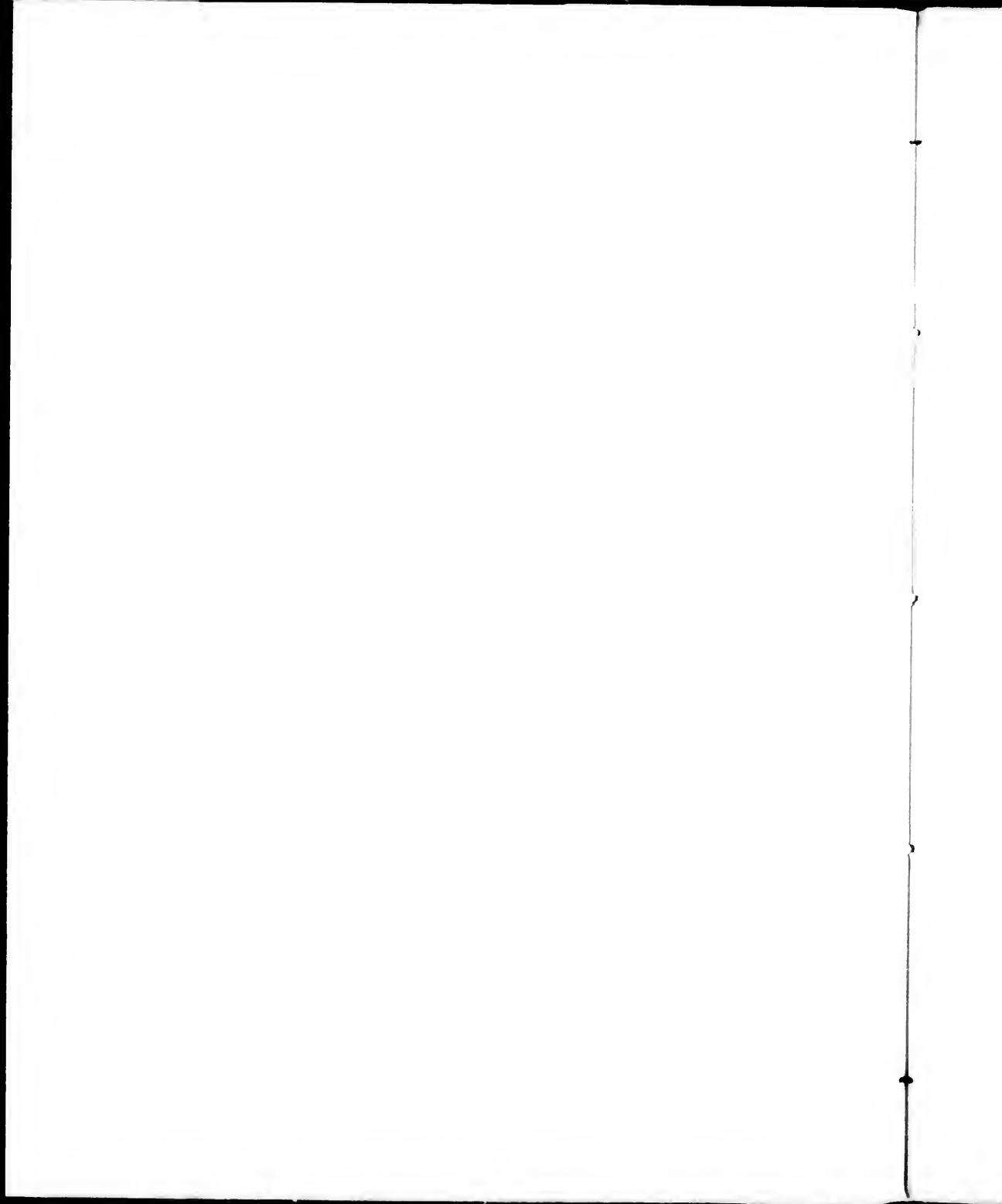
La bibliothèque des Archives  
publiques du Canada

Les images suivantes ont été reproduites avec le plus grand soin, compte tenu de la condition et de la netteté de l'exemplaire filmé, et en conformité avec les conditions du contrat de filmage.

Les exemplaires originaux dont la couverture en papier est imprimée sont filmés en commençant par le premier plat et en terminant soit par la dernière page qui comporte une empreinte d'impression ou d'illustration, soit par le second plat, selon le cas. Tous les autres exemplaires originaux sont filmés en commençant par la première page qui comporte une empreinte d'impression ou d'illustration et en terminant par la dernière page qui comporte une telle empreinte.

Un des symboles suivants apparaîtra sur la dernière image de chaque microfiche, selon le cas: le symbole  $\rightarrow$  signifie "A SUIVRE", le symbole  $\nabla$  signifie "FIN".

Les cartes, planches, tableaux, etc., peuvent être filmés à des taux de réduction différents. Lorsque le document est trop grand pour être reproduit en un seul cliché, il est filmé à partir de l'angle supérieur gauche, de gauche à droite, et de haut en bas, en prenant le nombre d'images nécessaire. Les diagrammes suivants illustrent la méthode.



QUEBEC CENTRAL RAILWAY.

**TOURISTS'**  
**GUIDE**

BETWEEN  
**QUEBEC AND NEW ENGLAND**

VIA QUEBEC CENTRAL RAILWAY AND LAKE MEMPHREMAGOG.



MONTMORENCI FALLS.

TICKET OFFICE OPPOSITE ST. LOUIS HOTEL, QUEBEC.  
SHIPMAN & STOCKING, AGENTS.

GENERAL OFFICES:  
SHERBROOKE, P. Q.

JAS. R. WOODWARD,  
GENERAL MANAGER.



APPROACH TO QUEBEC FROM BELOW POINT LEVIS.

QUEBEC CENTRAL RAILWAY

—  — (11)  
TOURISTS' GUIDE

— BETWEEN —

QUEBEC AND NEW ENGLAND,

— VIA —

QUEBEC CENTRAL RAILWAY AND  
LAKE MEMPHREMAGOG.

—:—  
ROUTES AND RATES OF FARE FROM QUEBEC TO ALL POINTS IN NEW  
ENGLAND, AND FROM SHERBROOKE TO ALL SEA-BATHING  
POINTS ON THE LOWER ST. LAWRENCE.

— ELEGANT DRAWING ROOM CARS RUN THROUGH ON ALL DAY TRAINS.

SHIPMAN & STOCKING,  
TICKET AGENTS,  
OPPOSITE ST. LOUIS HOTEL, QUEBEC.

GENERAL OFFICES :  
SHERBROOKE, QUE.

JAS. R. WOODWARD,  
GENERAL MANAGER.

1885



1885

(13)

PRINTED BY  
W. A. MOREHOUSE & CO.,  
PUBLISHERS, BOOK AND FINE JOB PRINTERS,  
SHERBROOKE, P. Q.

47193



THE

# QUEBEC CENTRAL RAILWAY

An Outline of its Scenery & Connections.

**T**HE QUEBEC CENTRAL RAILWAY may properly be termed the New Short Line and Favorite Summer Travel Route ; no other route leads the tourist and traveller to so many delightful summer resorts, and certainly none other combines such varied and picturesque scenery. The lakes and beautiful rivers of the Eastern Townships, the no less beautiful streams, lakes and mountains of Vermont, and that gem of summer resorts, Newport, are upon the direct line of travel, while in connection with the same line the pleasure and health seeker may find the most delightful routes to Boston, New York, Portland, all White Mountain Resorts, Lake Champlain, Lake George, Saratoga, &c., &c. Our list of tours will be found to embrace a great variety of desirable routes, and to include among the points to be visited all the great summer resorts of New England, New York and Canada.

## DESCRIPTION OF THE ROUTE.

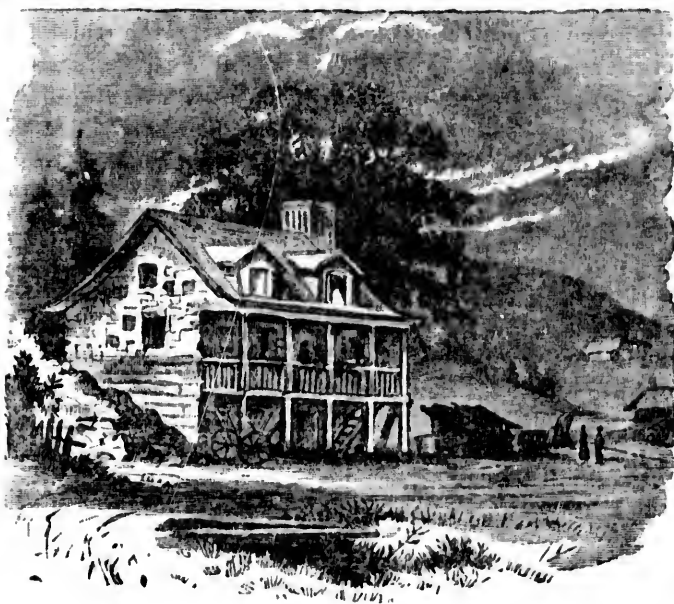
Leaving Quebec by the Quebec and Levis Ferry we cross to Point Levis, where the station of the Quebec Central Railway is situated. From Point Levis the traveller finds himself running along the shores of the beautiful St. Lawrence River. From the train a fine view is obtained of Quebec, the Dufferin Terrace and the imposing bluff on

which stands the Citadel. Here for several miles the passenger has also a magnificent view of the Beauport Slopes and of the celebrated Falls of Montmorenci. This is the only point from which a full face view of the falls is obtained, as well as of the Island of Orleans, nine miles below Quebec, and an extended view down the River St. Lawrence as far as the eye can reach; arriving at Harlaka Junction, the transfer station with the Intercolonial Ry., for passengers from the south going to River du Loup, Cacouna, all sea-bathing points along the St. Lawrence, Halifax and all points in the Maritime Provinces. Harlaka is situated on a new part of the line called the St. Charles Branch; this branch was completed during the past year, and gives the Railway a frontage on the St. Lawrence River immediately opposite Quebec. At St. Henry Junction, the line of the Intercolonial



VIEW OF QUEBEC FROM POINT LEVIS.

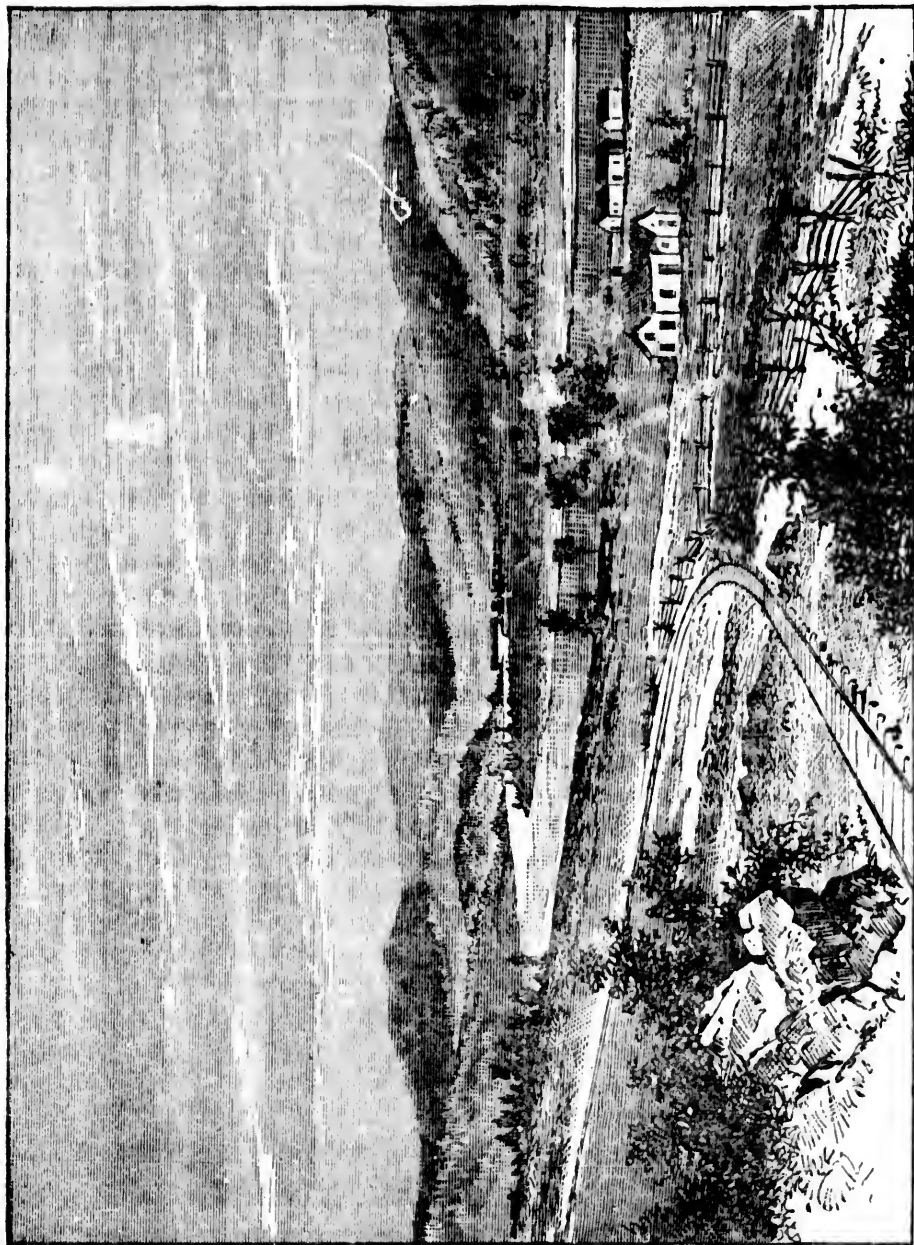
Railway is crossed and the train proceeds past St. Henry Village, St. Anselme, St. Henedine and Scotts Stations ; these are points of little interest and the line presents a sameness in its general scenery ; the villages and hamlets are decidedly French in character, and are generally made up of small buildings ; the better class are painted white, having red roofs ; and prominent in the distance appear the tin-covered



A FRENCH-CANADIAN HOME.

spires of the Catholic churches. After leaving Scotts Station the Valley of the Chaudiere River is entered ; this valley has been immortalized by Gen. Arnold's memorable winter march on Quebec in 1775, and is now noted for its celebrated gold mines. We now arrive at Ste. Mary, a delightful little town situated on the south shore of the Chaudiere River, and stretching along its bank some three miles, the meadows being annually inundated by the overflowing of the river ; the soil about here possesses superior fertility. Ste. Mary has a number of large mills and an extensive butter and cheese factory ; a spacious convent is erected

in the centre of the village, under the direction of the Sisters of the Congregation, and a flourishing college kept by the Christian Brothers. The Roman Catholic Church is a large, handsome and commodious building, the interior being handsomely fitted up. A considerable local business in lumber, flour and country produce is carried on. Leaving St. Mary we follow the course of the Chaudiere River for 12 miles, reaching Beauce Junction in time for refreshments, which are very neatly served at the Refreshment Room opposite the station. Rolling across the bridge at Beauce Junction the train winds up the side of the hill, and for a distance of five miles continues to climb; from this point a beautiful view of the Chaudiere Valley is had; the south side of the Chaudiere River presents a living panoramic view of highly cultivated fields and dense forests along its whole length, which, in summer, and especially when the golden hues of harvest time are woven into the magnificent groundwork of changing green, presents a double picture of unequalled and matchless beauty. St. Joseph, an important and promising village and the *chef-lieu* of this district, situated on a branch line from Beauce Junction running up the Chaudiere Valley, and called the "Chaudiere Valley Branch," may be seen in the distance from the hill-side. Above St. Joseph and still further up the valley, the line is constructed to St. Francis (16 miles from Beauce Junction). The Company proposes to construct this extension through to the State of Maine, there to connect with the International line of Maine, and thus form the shortest possible line between Quebec and the Lower Provinces of the Dominion, as well as to a connection with the Maine system of railways. When completed this will form an additional and attractive tourist route. Passengers can thus leave Quebec and in five hours be landed at the popular summer resort, Moosehead Lake, and from there to any point on the Maine sea coast. Nature has been most lavish with the wealth of varied scenery with which she has endowed this valley. And even before the completion of the extension through to Maine, if the tourist has time to take a run up this new line he will be amply repaid for the trouble. No more pleasant trip can be had than a drive through this charming region as far as the gold fields of St. George, which is ten miles above St. Francis.



THE CHELDIKE VALLEY, NEAR BEAR DEAL JUNCTION.

After climbing the hill from Beauce Junction we pass St. Frederic, Tring, Broughton and Robertson Stations, and arrive at Thetford; this is perhaps the most interesting region on the whole line. Thetford looks like a town of huts set upon a volcano; the charred forms of burned trees lie where they fell; earth and rock are heaped up in uncanny masses; the houses here stand at defiance of all rules of the compass, each owner evidently locating as he chooses, and yet Thetford is a necessity. Along the gray ridge of rock beside the town are the open quarries where that mysterious mineral, known in trade as asbestos, is found. It exists in seams shot through the hard serpentine rock, which is blasted out and hammered into fragments to obtain this valuable non-conductor of heat. Just how nature deposited this curious substance seems to be a mystery. Its fibrous texture renders it valuable in a hundred ways, and new uses are constantly being discovered for it. Steam-pipes are sheathed with it; roofs are covered to render them fire-proof. It is spun with other fibres into cloth that will not burn. The writer has seen a



BLACK LAKE.

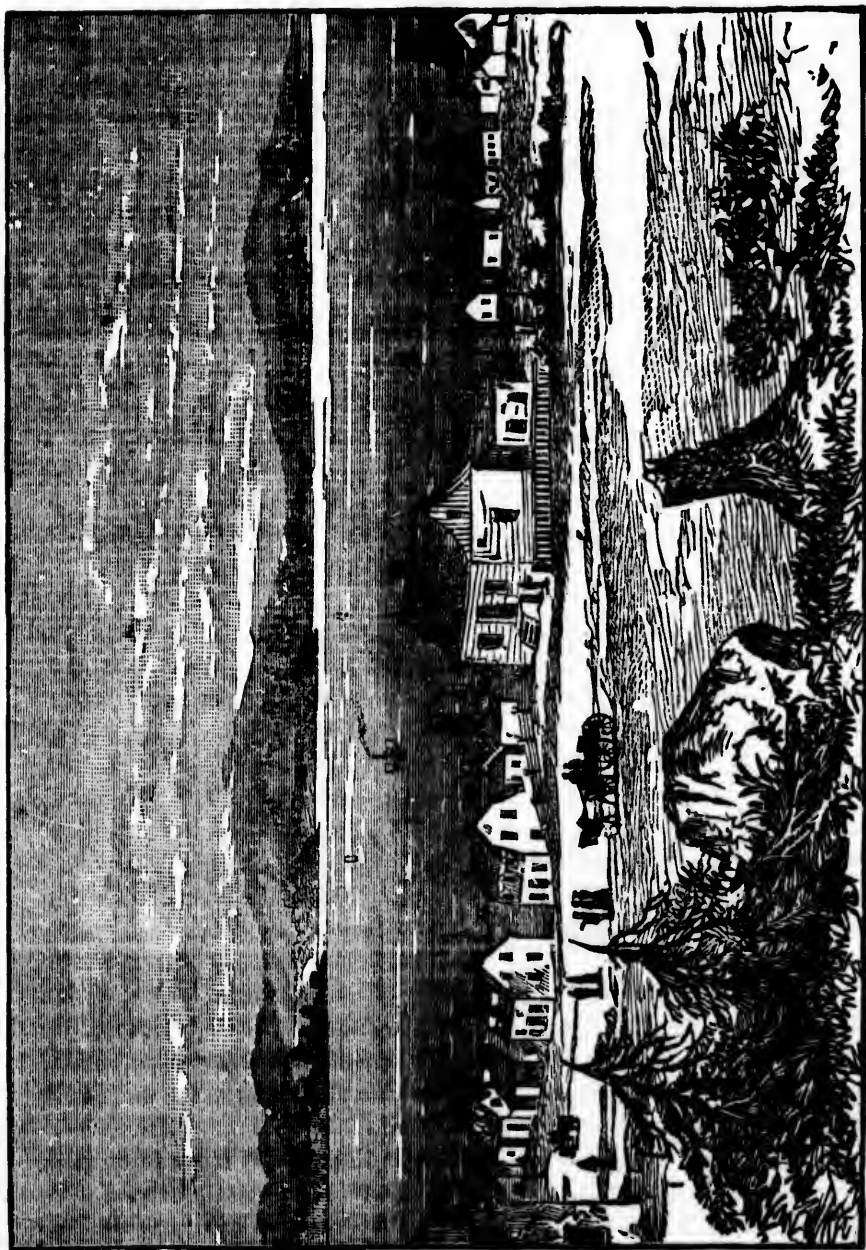
glove, soft, pliable and warm, spun from the pure asbestos, which enables its wearer to handle red-hot coals with perfect freedom, and which is washed by simply being thrown into the stove, where the dirt is burned off, leaving the glove snowy white. The idea suggests itself that such a glove would prove vastly useful in enabling some enterprising folks to safely remove their "chestnuts from the fire." Asbestos has also been found in large quantities and of the finest quality in the vicinity of the next station, Black Lake, which takes its name from the beautiful little lake lying deeply embedded among the hills several hundred feet below the level of the railway. These mines are a short distance from the railway up the mountain, but the miners' huts and the mine buildings can be seen from the train. Here from 400 to 600 miners are employed. The mines are worked by two large companies, one an American, and the other having its organization in London, England.

#### BLACK LAKE.

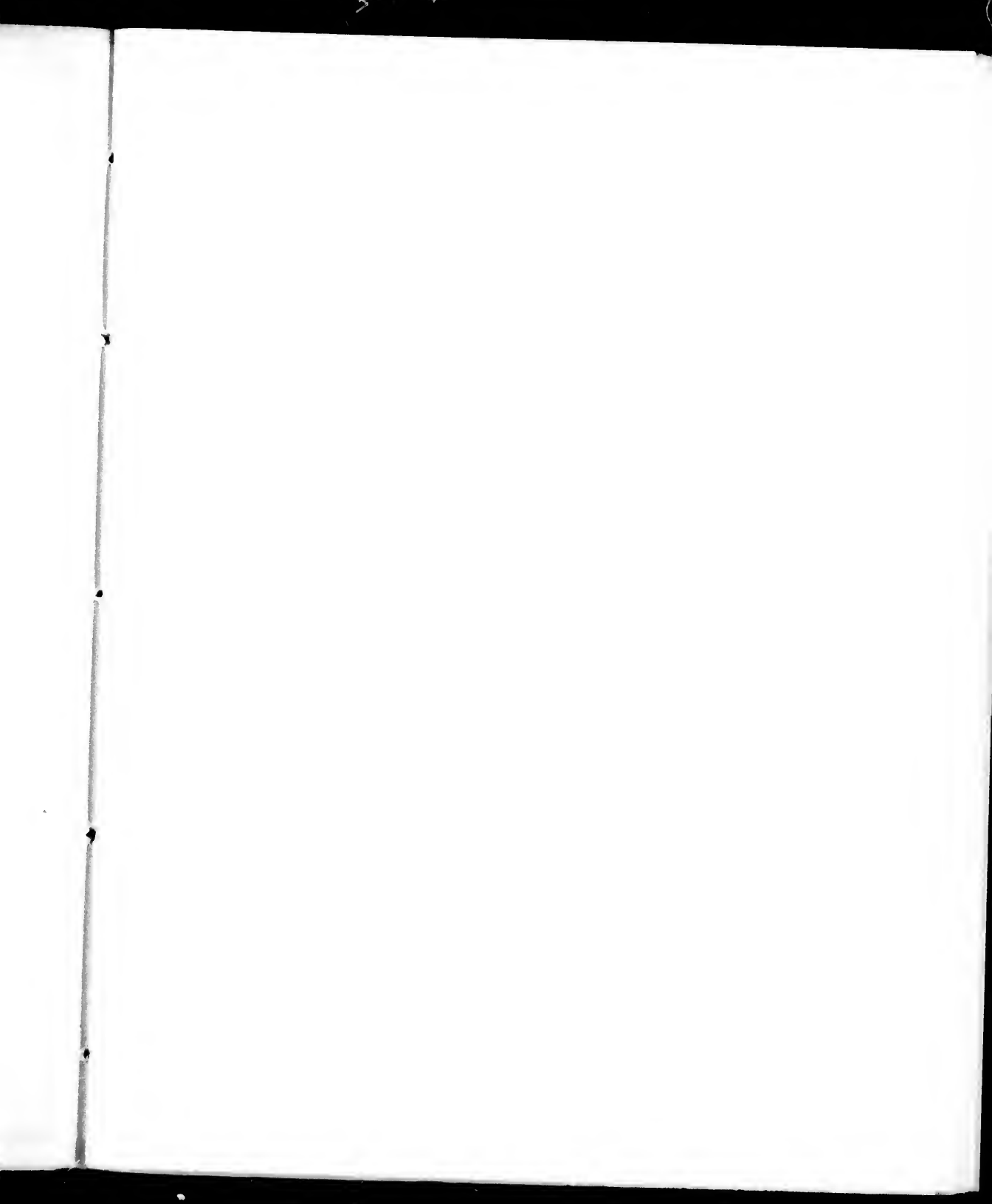
This wonderful sheet of water lies beneath a lofty mountain and is one of the most picturesque spots in Canada. During the summer months it is visited by the angler and sportsman, and it is not uncommon to catch trout here weighing from 10 to 12 pounds. This region abounds in lakes and streams, (all grand trout fishing waters,) wild and romantic scenes, boundless forests, and incalculable mineral wealth. We now proceed past Coleraine, a few miles back of which point, in Wolftown, are found rich deposits of asbestos, soap stone and chromic iron, which will yield a large traffic for the line. There has also recently been discovered in the vicinity a rich deposit of quartz gold.

Next is D'Israeli Station, back of which, half a mile or so, Bull's Head Falls are found; here there is an extensive lumber mill; Garthby, five miles further, is built on the shore of Lake Aylmer; this lake is claimed and conceded to be one of the most beautiful and interesting sheets of water in this part of Canada; it is broad and irregular, bordered by dense wood lands. The view of the lake from Garthby is one of the finest that can well be imagined. An extensive lumber business is transacted here. Lake Weedon, the next station,



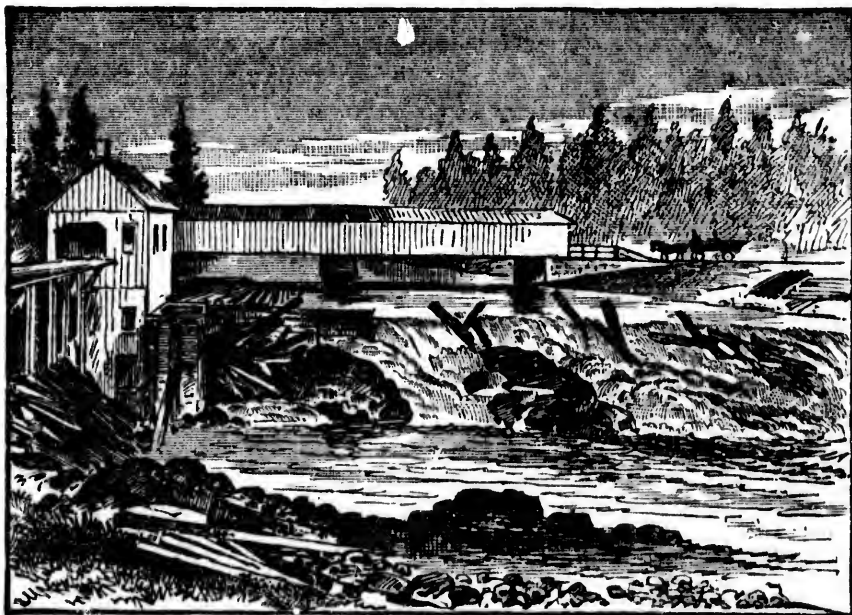


WARD'S BAY, LAKE AVLMER, FROM GARTHY.





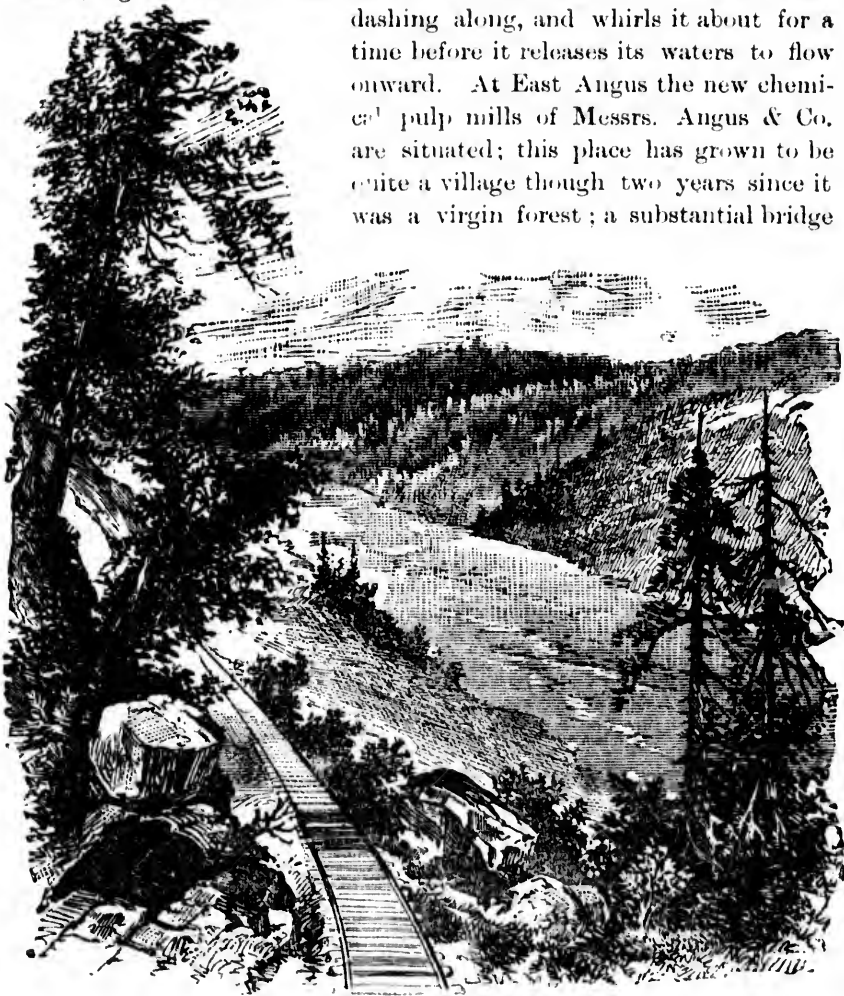
is also a very pretty place, and manufacturing of lumber to a considerable extent is carried on. Now we are in the wilderness; most of the houses are roughly hewn log huts, and nearly all so new that they seem to have been built but yesterday; there is something majestic in these vast expanses of almost unbroken forests, and something to admire in the sturdy enterprise which opens them to the settler. Passing Weedon, we arrive at Marbleton; the chief industry of this place is its lime and marble quarries; a branch line of 3 miles runs up



BULL'S HEAD FALLS NEAR D'ISRAEL.

to these quarries; they are worked by the Sherbrooke & Dudswell Lime Co., and a very extensive business is carried on. After leaving Marbleton and passing Dudswell the line follows the shore of the St. Francis River; about here the farm houses and their dependent buildings are substantial. Still further along the line the train traverses a series of deep ravines, where little creeks, perchance raging torrents in their season lead down to the St. Francis, which sparkles and eddies far below as we catch glimpses of it through the woods.

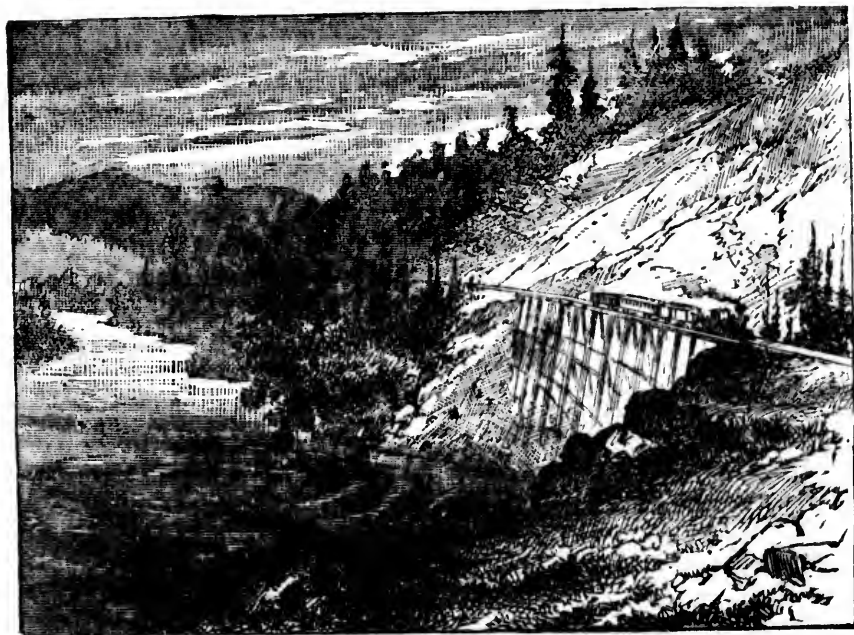
There is a wide place in the river, called in the local parlance the *Basin*, a great cauldron-like place, which catches the river as it comes dashing along, and whirls it about for a time before it releases its waters to flow onward. At East Angus the new chemical pulp mills of Messrs. Angus & Co. are situated; this place has grown to be quite a village though two years since it was a virgin forest; a substantial bridge



THE ST. FRANCIS RIVER.

has been built across the St. Francis River at this point and brings this village and the Railway line in close intercourse with Cookshire,

which is only five miles distant on the International Railway. In half an hour or less a bird's-eye view of Lennoxville is enjoyed, and foremost in the distance appears the towers of Bishop's College, the Oxford of Canada, in connection with which is Bishop's College School, of widespread and favorable note and extensively patronized, not only by the youth of Canada but by many from the United States; proceeding we reach Sherbrooke in fifteen minutes; here connection is made with



THE BASIN, ST. FRANCIS RIVER.

the Grand Trunk Railway for Portland, the Passumpsic Railway for Newport, Boston, &c., the Waterloo and Magog Railway, operated by the Central Vermont Railway Co'y, by which connection can be reached Montreal, Lake Memphremagog, New York, and all Western New England points, and the International Railway for Lake Megantic. Every tourist who has time at command, and but little extra time is required, should spend a day here before proceeding further. The Sherbrooke House, directly opposite the station, has the most central situation of any hotel in the city. Mr. Jos. Cote is a

courteous host and admirable manager ; under his progressive management the hotel has made rapid strides in the favor of the public, and every year witnesses some improvement and the inauguration of some new plan to increase the comfort of his guests and add to the popularity of the house.

The city of Sherbrooke ranks first in population, wealth and manufacturing importance in the Eastern Townships ; it is beautifully located at the confluence of the St. Francis and Magog rivers ; the site rising gradually from the former till the Upper Town attains a considerable elevation. The hill slopes of Sherbrooke are conspicuous several miles off, and glitter in the sun with their cathedral, college and church spires ; just above its confluence with the St. Francis, the River Magog descends 114 feet in little more than half a mile, comprising an almost uninterrupted succession of excellent privileges, along which several large manufacturing establishments are located. This immense power, when utilized as it must soon be, will tend to make this place one of the greatest manufacturing localities in the Dominion. There are many places of interest within and near the city that strangers should visit.

Wellington Street is the business street and chief thoroughfare ; there are some fine stores on this street, and among the principal ones we may mention that of Lucke & Mitchell, wholesale and retail hardware merchants, where the sportsman may get a complete outfit of guns, rifles, revolvers, fishing tackle, tents, etc., of the very best kind and at reasonable prices. R. D. Morkill & Co., the oldest and principal dry goods merchants, have their store located on this street ; also the large tailoring establishment of Walter Blue. Passing along Wellington Street and by the market place we enter Commercial Street, cross an iron bridge over the Magog River, and we have before us the Eastern Townships Bank and the Public Buildings, two very handsome and imposing structures ; directly opposite is the Magog Hotel, which is favorably known to travellers from all parts of Canada, kept by mine host Fred Gerekin, so long connected with the St. Lawrence Hall, Montreal, as to need no further commendation ; further up this street the Congregational and Episcopal churches, two very

neat edifices, are situated ; and at the further end the street fades into a perspective of pretty villas. Melbourne Street makes a delightful promenade with its fine residences and flower gardens and its charming river views. Turning up a side street from the market place five minutes' walk takes one past a big mill in full clatter and hum of



THE MAGOG RIVER.

work, to a slender footbridge at the head of a deep and picturesque canon, where the contracted Magog pours a fierce torrent down from leap to leap among broken masses of rock and between high walls crowned with dark pines.

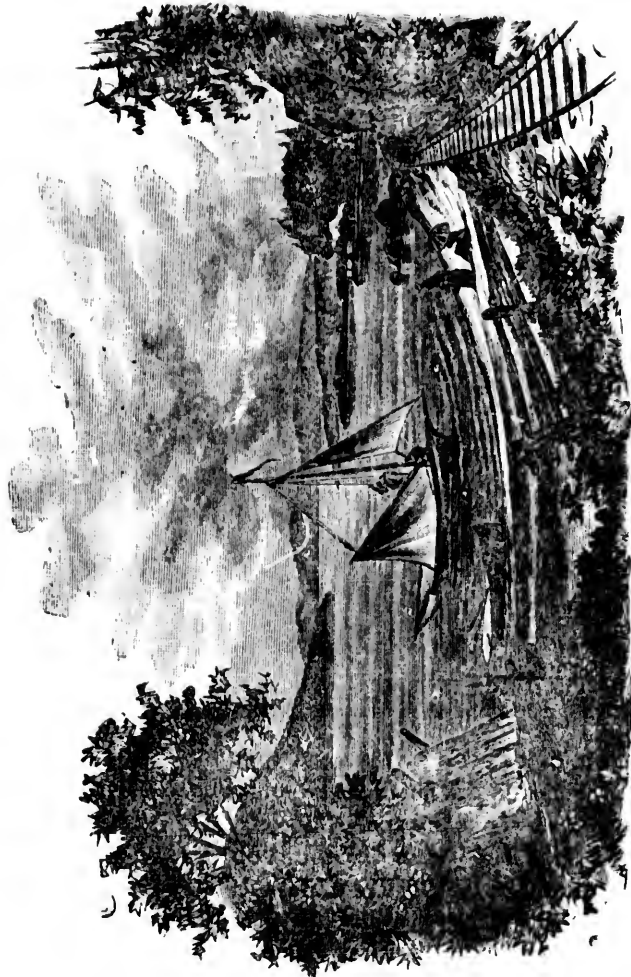


Sherbrooke claims a population of 10,000. It has a Free Reading Room. The educational institutions are very well equipped and efficient. Its largest industry is the Paton Mill, which employs some five hundred hands, turning out a make of tweed which is famous in the trade ; there are also a number of lesser factories and mills employing a great number of hands, and all are operated by water power. To Lennoxville, three miles beyond Sherbrooke, is a very pleasant drive ; here the St. Francis River is joined by the Massawippi, which brings the tribute of the Coaticook and other streams, as well as the overflow of Lake Massawippi ; overlooking this "meeting of the waters" at Lennoxville, and surrounded by a landscape of rare loveliness, is the University of Bishop's College with its pretty chapel and collegiate school. The friends of Bishop's College, undisheartened by repeated fires, have not only restored the buildings but extended them, and provided anew a good working library. Among literary donations is a sumptuous *fac simile* of the Codex Sinaiticus from the Emperor of Russia. Above and below Lennoxville the St. Francis lingers among some sweet scenery ; the stillness of the river here is in striking contrast to the rude concourse at Sherbrooke where the Magog dashes wildly down a steep incline, bringing the overflow of Lakes Magog and Memphremagog. Returning to Sherbrooke you can spend the evening agreeably in the cozy Free Reading Room, and retire early to prepare yourself for the great campaign of to-morrow.



## TO THE LAKES! TO THE LAKES!

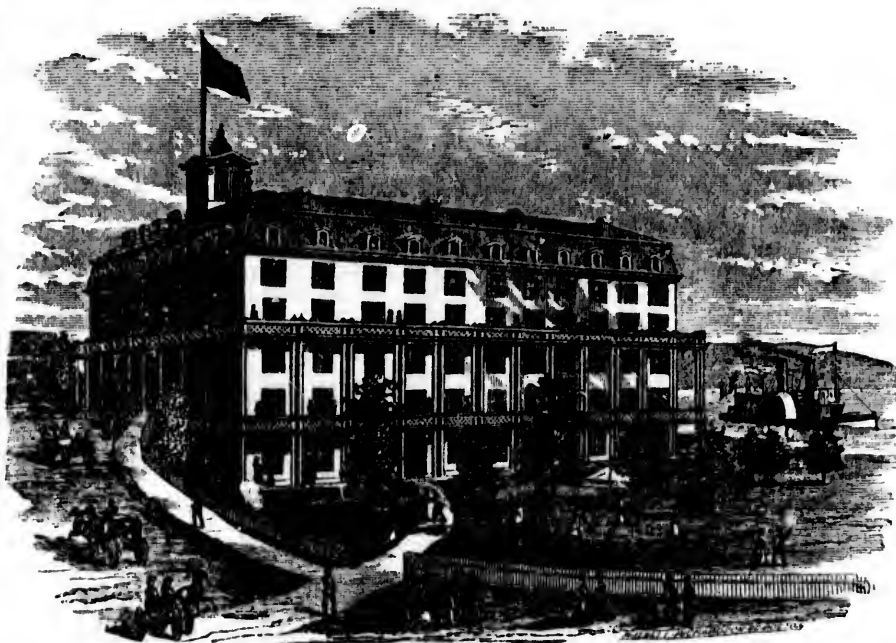
In leaving Sherbrooke to reach Memphremagog the tourist can take either the Passumpsic, which leaves the Union Depot at 4:30 a. m. and 8:35 p. m., or the Central Vermont, which leaves Belvidere Station



MASSAWIPPI LAKE.

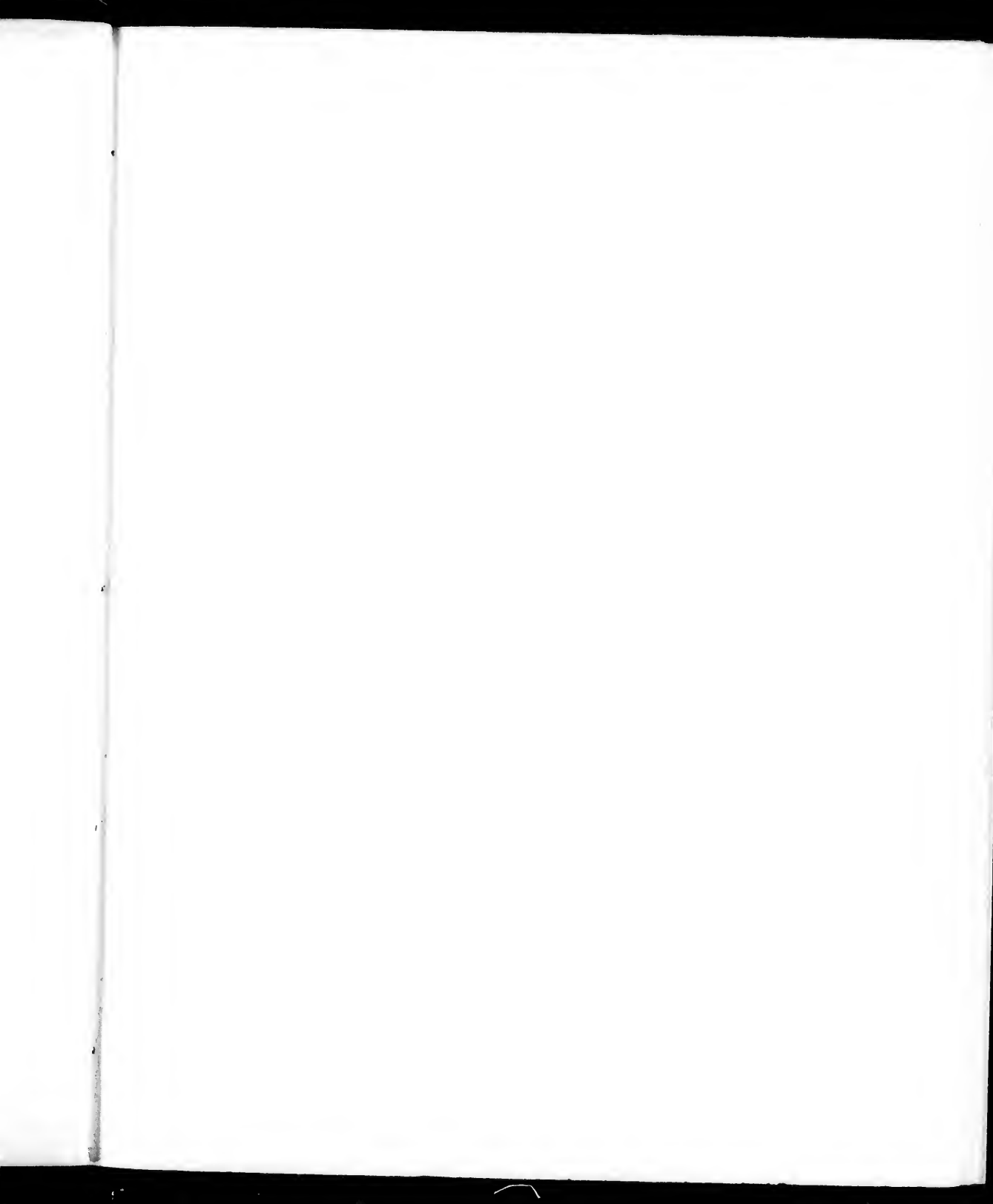
at 6 a. m. and 4:10 p. m. By the former route we have an opportunity of seeing the beautiful scenery of the Massawippi Valley. Away we go! until in due time we reach Lake Massawippi and run close by its rocky shore for six miles. Continuing our tour we now come in sight of Lake Memphremagog, and upon the shores of this romantic lake and amidst scenery of the most picturesque character is

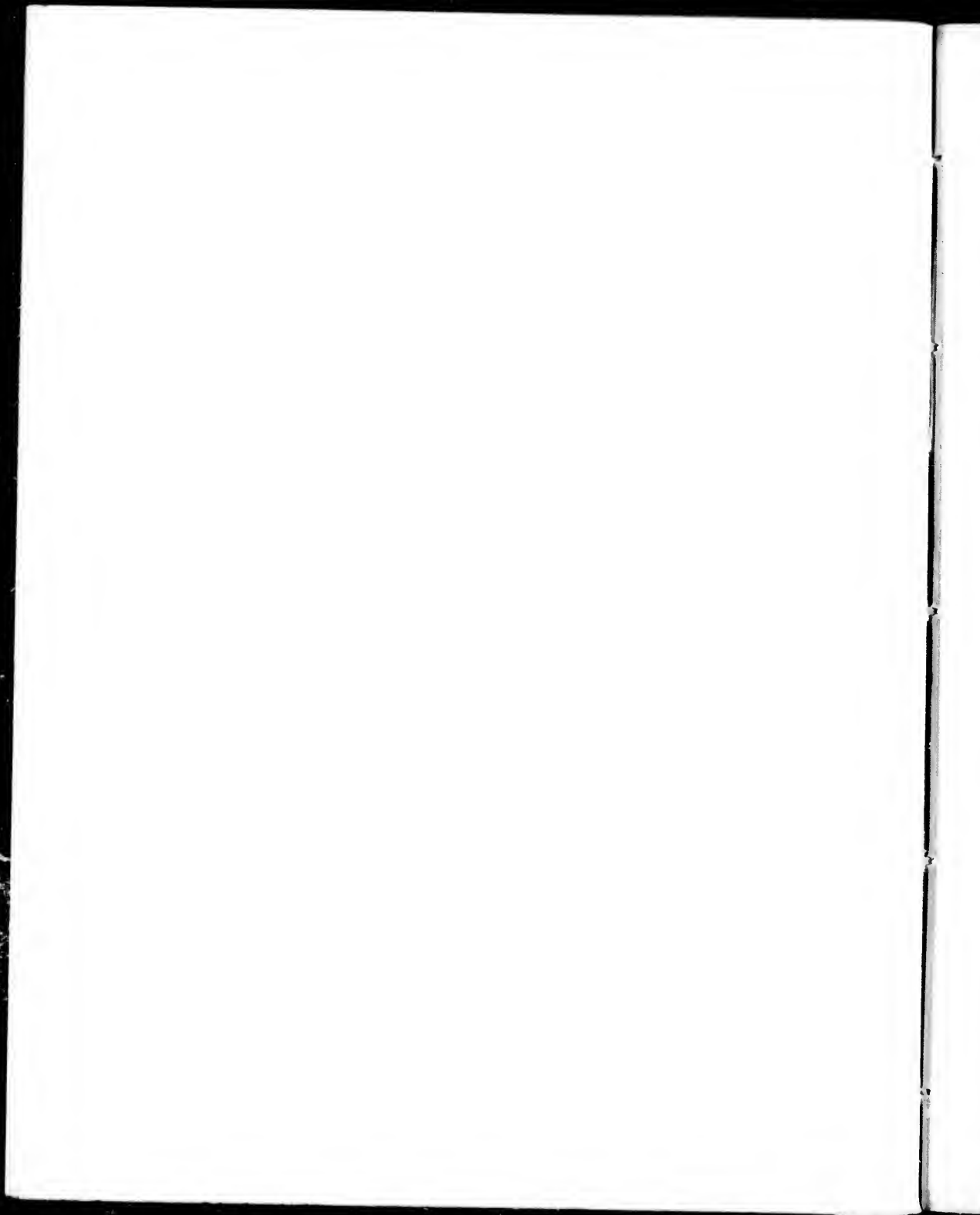
situated the village of Newport, a place long famed as one of the most attractive and beautiful of northern summer resorts ; few travellers who have the leisure at command can well withstand the temptation to halt at this pleasant spot, especially if they have formed a previous acquaintance with the elegant and substantial comforts of the well-known Memphremagog House. This house is admirably kept by W. F. Bowman,



MEMPHREMAGOG HOUSE, NEWPORT.

and will accommodate 400 guests ; the broad and spacious verandas which extend on all sides of the hotel afford glorious outlooks upon the lake and the other scenic beauties of Newport. On leaving by the Central Vermont the traveller passes the beautiful lake Little Magog to the outlet or north end of the Big Lake Memphremagog, where the thriving little Village of Magog is situated ; good fishing abounds in the vicinity, and Jamieson, the host at the Park House, will make all





comers welcome. Magog Village boasts of unrivaled water power and of the only print works in Canada, "The Magog Textile and Print Works." From this point the tourist can take the "Lady of the Lake" or "Mountain Maid" for a delightful sail through the lake to Newport, or the train for Montreal or any point reachable by the Central Vermont Railway.

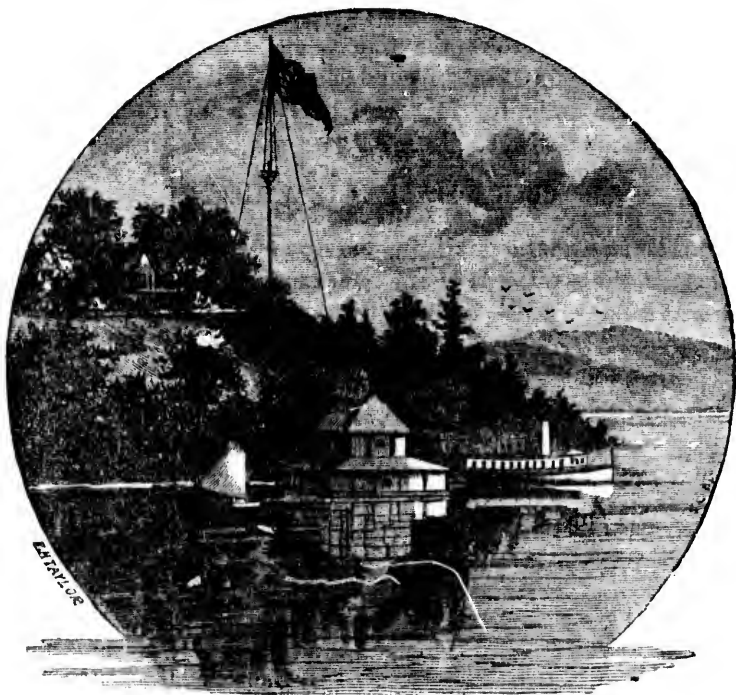
### LAKE MEMPHREMAGOG !

Lake Memphremagog is from one to two miles wide and thirty miles long, fully two-thirds of its fair expanse lying in Canada. Its outlet is at Magog, which is situated at the northern extremity ; and



MOUNT ELEPHANTIS.

Newport, which is at the southern end, is therefore at the head of the lake. An excursion down the lake in one of the fine steamers, "Mountain Maid" or "Lady of the Lake," is a most delightful experience. Along the western shore is a range of mountains, of which Owl's Head and Mount Elephantis are the most prominent elevations. The eastern shore is less wild, though very picturesque, and towards the southern end it is dotted with the pleasant summer villas of some



SIR HUGH ALLAN'S VILLA.

of Montreal's wealthy citizens. Memphremagog is an Indian name, and is said to signify "beautiful water," a most happy designation, surely. The scenery greatly resembles that upon Loch Lomond, the "Queen of the Scottish Lakes." There are upwards of twenty islands in the lake, the largest of which (one hundred acres in extent) is known as "Province Island;" Round Island is a gracefully formed and wooded isle guarding the bay which leads up to Owl's Head; Lord's Island is near the foot of the lake. On Long Island is a huge boulder known as Balance Rock, and upon Skinner's Island is a cave, of which romantic stories are told in connection with early smuggling operations.



OWL'S HEAD MOUNTAIN.

scenes of many a wild expedition, romantic or tragic : yonder is the lake gateway through which the fierce Abenakis so often carried desolation to the heart of Massachusetts. It was through these maple woods on our west flank that Roger's Rangers in 1759 swept like a whirlwind of flame to exterminate the whole brood of tigers that had so long harried the homes of New England. Many the lawless adventure of love and war in the old days of partizan and ranger, who often helped out the glamor of romance by picturesque finery or Indian costume ; now you may wander at will amid the wildest of this magnificent scenery without other adventure than the rough salute of the mountain air. The ascent of the mountain is quite



MOUNT ORFORD.

The Owl's Head Mountain House is a beautiful summer resort situated at the base of Owl's Head Mountain, on the shore of Lake Memphremagog, twelve miles from Newport, Vt., at the head of the lake, and eighteen miles from Magog, P. Q., at the outlet of the lake. The summit of the mountain is 3,000 feet above the level of the lake, and 3,500 feet above the level of the sea ; and from its rugged top a most charming panorama is spread out before the eye. From the height we look out upon



easy by a plain, smooth foot-path. From points near the house, and easy of access, charming views of the lake in either direction are obtained. The air is pure and dry, a positive cure for hay fever. The house is new and commodious, and fitted with all the modern conveniences. Every facility for rambling, boating, bowling and fishing will be afforded, which, with the great number of places of varied interest in the immediate vicinity, will make a visit here healthful and highly enjoyable. The steam

yacht "Raymond" will run between Newport and the Owl's Head Mountain House, and can also be chartered by parties who may wish to visit the several places of interest on the lake. The only village on the shore of the lake between Newport and Magog is Georgeville, on the eastern shore. This is a delightful summer resort. A magnificent hotel, the Camperdown House, is situated here, and the steamer "Mountain Maid" makes daily trips between Magog and



BALANCE ROCK.



SKINNER'S CAVE.

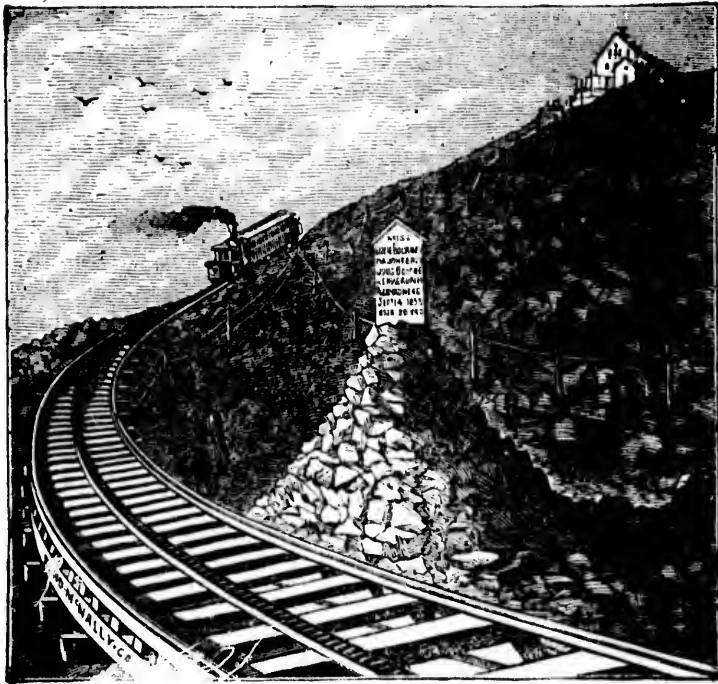
Georgeville in connection with the Central Vermont R'y trains. The steamer "Lady of the Lake" from Newport calls at Georgeville and also touches at Knowlton's Landing, opposite Georgeville, on the west side. At Magog's Point, eleven miles from Newport, the Passumpsic R. R. Company has fitted up a pic-nic grove (Bay View Park) with a pavilion for dancing, &c., and steamer excursions to this place are frequently made during the summer.

## FROM NEWPORT TO THE WHITE MOUNTAINS.

The desire of the tourist after a sojourn at Lake Memphremagog is to reach the White Mountains, and a ride South through the Connecticut and Passumpsic Valley is delightful ; there is a constant succession of beautiful river, mountain and lake views, the many farming and manufacturing villages nestling among the mountains and on the banks of swift-running streams, with their background of rugged hills, form a picture that none but the Omnipotent Artist could paint ; and each successive mile of the journey is only a new revelation of the grandeur and beauty of northern New England scenery.

West Burke, 28 miles from Newport, is the station from which passengers leave by stage line for Willoughby Lake, 6 miles distant. This wonderful sheet of water lies between two lofty mountain walls ; from the summit of these mountains you may look to the southeast upon the White and Franconia mountains, westward upon the bold peaks and extended ridges of the Green Mountains, northward into Canada, and southward along the broad valley which stretches between the great mountain ranges ; the lake is six miles long, from half a mile to two miles wide, and of very great depth. The mountains rise so abruptly from the water that on the east side there is barely room beneath the great frowning wall for a carriage road. A fine hotel is situated near the lake and is easily reached from West Burke Station by stage ; or from Barton by stage to the lake, and a delightful trip the entire length of the lake to the hotel. Continuing southward we pass Lyndonville and Lyndon, and St. Johnsbury (44 miles from Newport) is reached. This is one of the most thriving and beautiful towns of New England, and is an important business centre ; the extensive scale works of Messrs. Fairbanks is situated here, and the manufacture of scales, which find their way to all points of the globe, is the chief industry of the place. St. Johnsbury is the point of junction with the St. Johnsbury and Lake Champlain Railroad, by which Lake Champlain, Highgate Springs, Highgate Falls, Albany Springs, the Adirondack Regions, Ogdensburg and other important points west may be reached. A charming route to Lake George and

Saratoga from Quebec has also been opened over this line. This line, in connection with the Portland & Ogdensburg, forms a direct route to Portland; and with the Boston & Lowell forms the favorite tourist route to Whitefield, Bethlehem Junction, Twin Mountain, Fabyans, Crawford, Lancaster, Jefferson, Profile House, and all White Mountain points. The route from Fabyans to Base Station is over the Boston & Lowell Railway, White Mountain division. The ascent of Mount



MOUNT WASHINGTON RAILWAY.

Washington is the famous Mountain Railway; the grade, which reaches 1,980 feet to the mile or about one foot in three—its length is a trifle over three miles, and the total rise is nearly four thousand feet. This road was commenced in 1866, and the success

which has attended the enterprise has been very marked. The road is most substantially built, and besides the usual rails there is a centre rail of peculiar construction to receive the motive power; this consists of two bars of iron with cross pieces every four inches, and a centre cog-wheel in the locomotive plays into this rail. The cars are comfortable and easy, and the trip is made without danger or fatigue. The cars are provided with seats placed at an angle which brings them nearly on a level on the ascent, they all face down the mountain; there is, however, an aisle in the car, and platforms at each end, so that views may be had from all directions. The Mount Washington Hotel is situated on the summit of Mount Washington, 6,293 feet above the sea level; the view from the summit is magnificent beyond description: a horizon of nearly 600 miles bounds the prospect, and the mountain peaks stand on every side as sentinels to enjoy the mountain scenery; it is advisable to remain over night, and, if it be clear, the gratification will be complete; as the sun sinks in the west the shadows of the mountain enlarge and extend far and wide.

#### TO PORTLAND, BOSTON AND NEW ENGLAND CITIES.

From Fabyans the traveller may proceed to Boston via Crawford House, North Conway and Eastern Railway via Bethlehem Junction, Littleton, Plymouth, Concord and Nashua, or via Crawford House, North Conway and Portland, taking rail or steam to Boston. These routes are all very attractive. If, however, the traveller is not desirous of visiting Mount Washington or the White Mountain resorts, the through route from Quebec is via Wells River, which is on the Passumpsic Railway 65 miles from Newport. Wells River is situated on the Vermont side of the Connecticut River; here an important link of the route to Boston and other New England cities is reached, this is the Boston & Lowell Railway: it is the favorite tourist travel route, and by it the principal cities and manufacturing centres of New England are reached. In going to Boston we pass by Plymouth; this beautiful town is at the

confluence of Bakers and the Pemigewasset rivers, and has very appropriately been termed the "Gateway to the Mountains"; the great sentinels of the Franconia are near at hand, and the mountain and river scenery of the region is exceedingly fine. At Weirs, the steamboat landing for Lake Winnepesaukee, is located; an excursion over this lake is most delightful, and the mountain views thus obtained are unsurpassed in picturesque beauty. Passing on to Concord, and thence through Hooksett, Manchester and Nashua, we reach the busy city of Lowell, the "City of Spindles." Lowell has a population of nearly 60,000, and is the leading cotton manufacturing city in the United States; the first cotton mill was erected here in 1820; to-day there are eighty mills, in which is invested over twenty millions of dollars. Proceeding northward and through the charming suburbs of Boston we soon reach our destination, arriving at the magnificent station of the Boston & Lowell Railway, on Causeway Street, one of the largest and finest passenger stations in New England.

#### TO NEW YORK

The shortest and most direct route to New York is via the Quebec Central Railway to Sherbrooke, Passumpsic Railway to White River Junction, and the Conn. River and N. H. & H. R'y to New York; magnificent combined parlor and sleeping cars are run between Quebec and Springfield without change; this route opens up much that is beautiful and new to those who have heretofore travelled the other way; and now that all the luxuries and comforts of modern travel are provided for, the tourist taking this route can be assured of a most delightful trip.

#### QUEBEC TO MONTREAL VIA LAKE MEMPHREMAGOG.

Those having a few days to spare and desiring to visit Montreal should avail themselves of the cheap rates offered by the Quebec Central Railway for excursions via the beautiful Lake Memphremagog. Passengers can leave by Quebec Central train at 2 p. m., daily, arrive at Sherbrooke at 8:15, at Newport on Lake Memphremagog at 10:25 p. m.; the steamer "Lady of the Lake" makes trips daily through the

lake, returning in time to connect with South Eastern trains for Montreal, or passengers so desiring may go by steamer to Magog, and there take the Central Vermont trains for Montreal, returning from Montreal to Quebec by steamer. The round trip is made in three days and is one of the most delightful tours that can well be imagined; it requires but little time and a very small expense.

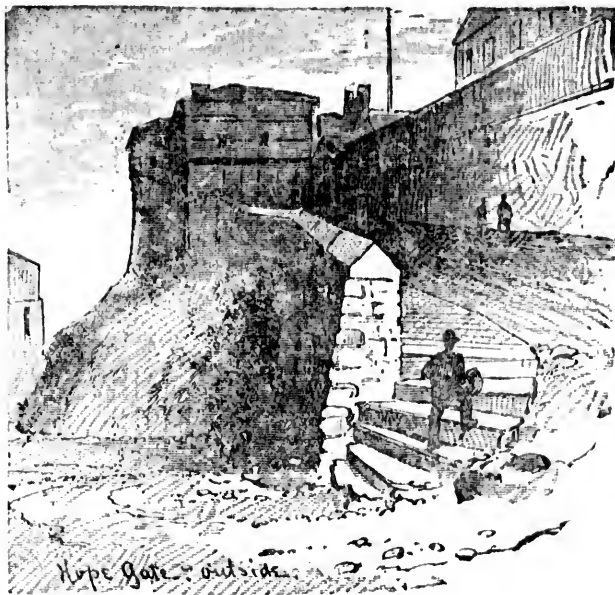
#### NEWPORT AND SHERBROOKE TO QUEBEC AND THE LOWER ST. LAWRENCE AND SAGUENAY RIVERS.

Passengers wishing to get to Quebec direct from Newport can take Passumpsic train going north at 5:40 a. m., and running along the eastern shore of Lake Memphremagog for two or three miles, and thence into the valley leading to the charming Massawippi Lake, connects at Sherbrooke with the Quebec Central Railway; this affords a through daylight ride between Newport and Quebec. The scenery along the Quebec Central Railway is wild and magnificent: the beautiful forest-environed lakes which have slept amid the rocky hills of the lower French-Canadian region, the wild and turbulent St. Francis River and the peaceful vale of the Chaudiere, are things which will linger in the memory of the appreciative traveller long after the impressions were made by the actual tour.

The *entre* into the fine old City of Quebec, the 'Gibraltar of America,' as the heavy ferry boat brings him to the dock yard in the lower town is quite in keeping with the foreign continental atmosphere about him. A lively, pertinacious bevy of caleche drivers make an onslaught upon the new-comer. If he hesitates, he is lost, but if wise he will hand his valise to the porter of the St. Louis, and climbing into the omnibus, he will be rattled along through the narrow streets and up a steep hill, under the frowning, gray, time-stained walls of the upper town, then through its gate and past the terrace to the hotel, the only house in town catering to pleasure travel.

When Quebec is to be considered, one drops into the past as naturally and gracefully as the late Mr. Silas Wegg dropped into poetry.

Quebec stands like a fragment of the old world--like a creation of the contentious feudal ages stranded upon the shores of a new continent. We have nothing else like it in the land, and the wonder is that a place so magnificent in its seat upon this rocky cliff, so invested with the history of four races, standing as it does within a day's journey of the city of New York, should not have become the Mecca of a far greater army of travelers long ago. In our busy, driving present,



THE WALLS OF QUEBEC.

intent as all are upon questions involving the almighty dollar, we find but little time to devote to research among the by-ways of the past; but coming generations will hold Quebec in higher esteem than we do, and doubtless they will find bigger and finer hotels there than now exist. Indeed, it is understood that the Russell Hotel Company will shortly begin the construction of a splendid caravansary, facing upon Dufferin Terrace. If this is done, it will give the most superb view from its portals enjoyed by any hotel upon the continent.

Quebec and its vicinity are rich in points of genuine interest. The most popular rallying-point in the city is the broad Dufferin Terrace.

Here, upon the warm summer evenings, the scene partakes of the beauty of a carnival. A wealth of color and variety of costume passes before the eye, and fine military music is rendered by the band attached to the garrison. From the railing along the verge of the cliff upon the Terrace, one may look down into the active water-front life of the town below, or let the eye range over the broad expanse of the noble river, dotted with vessels of every size and form, from the huge trans-Atlantic steamship to the slow-moving barge, with its dingy square sail spread to the breeze.

Along the St. Louis and St. Foy roads one comes upon the fine suburban homes of the leading classes. It is the fashion for travelers to drive out by one road and return by another. A fine ride takes one to the superb falls of Montmorenci. It leads through the rambling and quaint village of Beauport, whose snowy, neat homes dot the entire route. From the bank, upon the lower side of the fall, a grand view of the river and city may be enjoyed. It will richly repay the traveler,



*Breakneck Stairs.*

BREAKNECK STAIRS.

the river and city may be enjoyed.



if blessed with good lungs, to descend the long flight of stairs leading to the foot of the fall.

In the winter time a great cone of ice is frequently formed by the spray from the fall, and the Canadians, hardy in all their sports, use it for coasting or "tobogganing."

A curious feature of the city, not to be missed by the stranger, is the fine shaft in the "Governor's Garden," facing the Terrace, some sixty-five feet in height, erected to the joint memory of the commanders of opposing armies—Wolfe and Montcalm—both of whom fell in the strife. The world probably does not furnish a parallel case.



A QUEBEC VISTA.

The Plains of Abraham, where the battle was fought which gave cause for the monument spoken of, are much visited; and lastly, but not by any means the least in importance, is the citadel itself—a military city upon a mountain—where the visitor is escorted by a polite and attentive soldier through the various hospitals, store-houses, casemates and other structures filling the interior of the massive fortress.

The dress parade of the brightly-uniformed regulars is always an attractive sight.

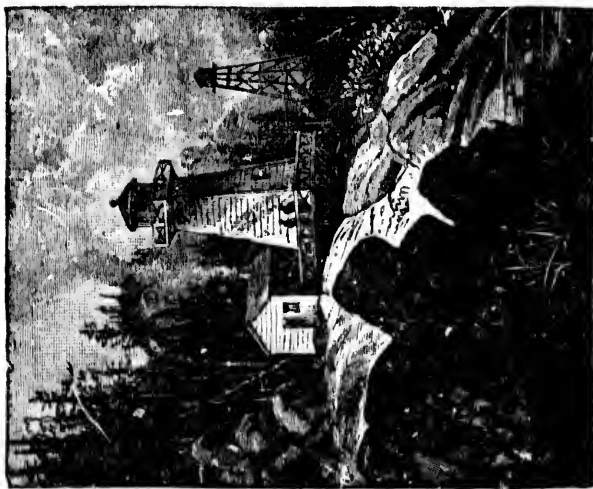
Quebec—including the city and suburbs—contains 174 streets, among the principal of which are the following : ST. JOHN STREET, which extends from Fabrique Street to St. John's Gate in the Upper Town, and is occupied chiefly by retail stores ; ST. LOUIS STREET, a handsome and well-built street extending from Place D'Armes to the old St. Louis gate, and occupied principally by private dwellings ; D'AUTEUIL STREET, facing the Esplanade, is an elegant street comprised entirely of private dwellings ; GRAND ALLEE or ST. LOUIS ROAD, outside St. Louis Gate and St. John Street without, are both fine streets ; BUADE STREET, leading from the post-office to the Roman Catholic Cathedral on Fabrique Street, is a very fine street : the fur store of Mr. G. R. Renfrew & Co. is located here ; they are the most extensive dealers in furs in Canada, and strangers are invited to inspect their stock of manufactured furs and Indian curiosities ; GARDEN STREET extends from Buade to St. Louis Street : the English Cathedral and Russell House are situated on this street, and directly opposite is the store of G. & C. Hossack, groceries, wines, etc. ; Messrs. Hossack make a specialty of supplying fishing and camping parties with necessaries ; PALACE STREET, extending from St. John Street to the Lower Town, is a fine street : the Albion Hotel, a very popular and well-known house, is situated on this street.

Among the public buildings may be mentioned the new Departmental Buildings, the Roman Catholic Cathedral, an irregular building capable of containing 4,000 persons, and covering an area of eight acres ; the English Cathedral, surmounted by a lofty spire ; and St. Johns Free Scotch Church, also adorned with a spire, occupying elevated positions in the Upper Town.

The boats of the St. Lawrence and Saguenay line of steamers leave early in the morning of each week-day in the season. Passing to the westward of the Isle of Orleans, a fine view of the Falls of Montmorenci is enjoyed, and far ahead the bold outline of Cape Tourmente



MONTCALM'S HEADQUARTERS.



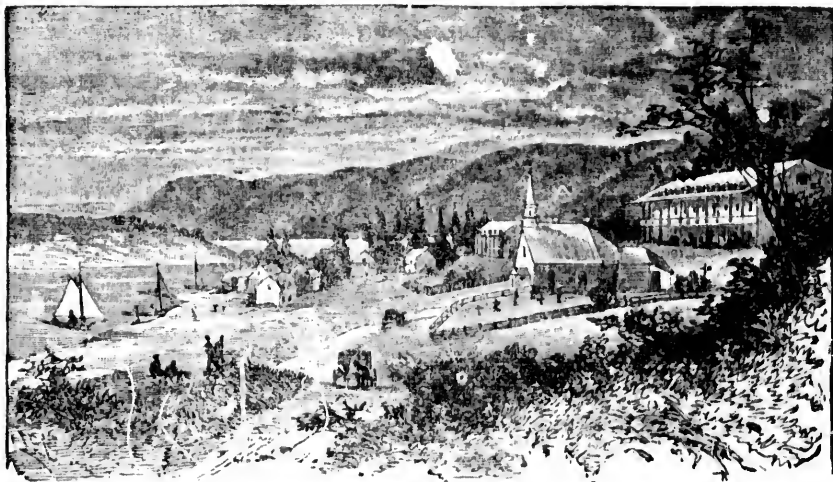
A ST. LAWRENCE LIGHT-HOUSE.

looms up. All day long the rugged Laurentian Hills are upon the left, and the river widens until its further shore is but a dim outline. Murray Bay, a Lower Canadian Long Branch, is the objective point with many of the voyagers. It sits in picturesque style upon the hill-side; and the crowd of gay folks upon the wharf, waiting for the coming of the boat, seem to be having a very enjoyable time.

Cacouna is a place of considerable importance as a summer resort. It is upon the southeastern shore, and nearly opposite the mouth of the Saguenay.

The bathing upon the lower side of the river, in the vicinity of Cacoma, is said to be much more comfortable than upon the left shore. This is due to the counter-current of cold water running in from the Arctic sea.

Tadoussac stands at the mouth of the Saguenay. The steamer-landing is located upon the latter river, about a mile from the village. A hotel of considerable proportions fronts upon a wide crescent beach, and a bevy of handsome summer-houses are seen in the groves a little removed to the right. A very little and very old c'ureh stands



TADOUSSAC

close to the hotel, and is usually open to visitors. At the landing the Dominion Government maintains a fish-hatching establishment for the propagation of Salmon, many fine specimens of which may be seen. A museum, incidental to the fishery interests, occupies the upper floor.

The wild and magnificent scenery of the Saguenay has been

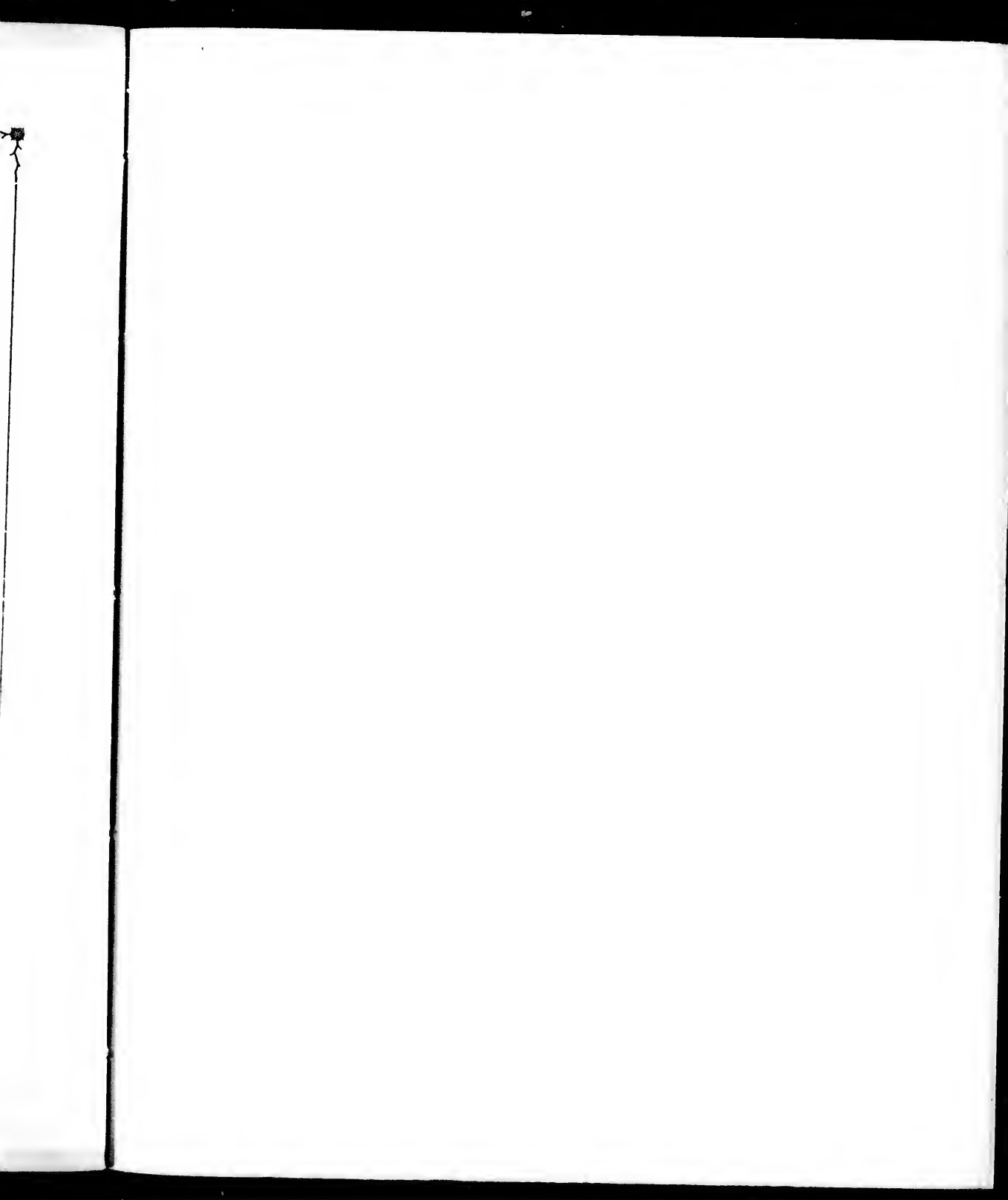
described by a hundred pens. From its mouth to the far northern village of Chicoutimi, it presents bold promontories or precipitous walls, which attain an elevation at some points of not less than one thousand six hundred feet.

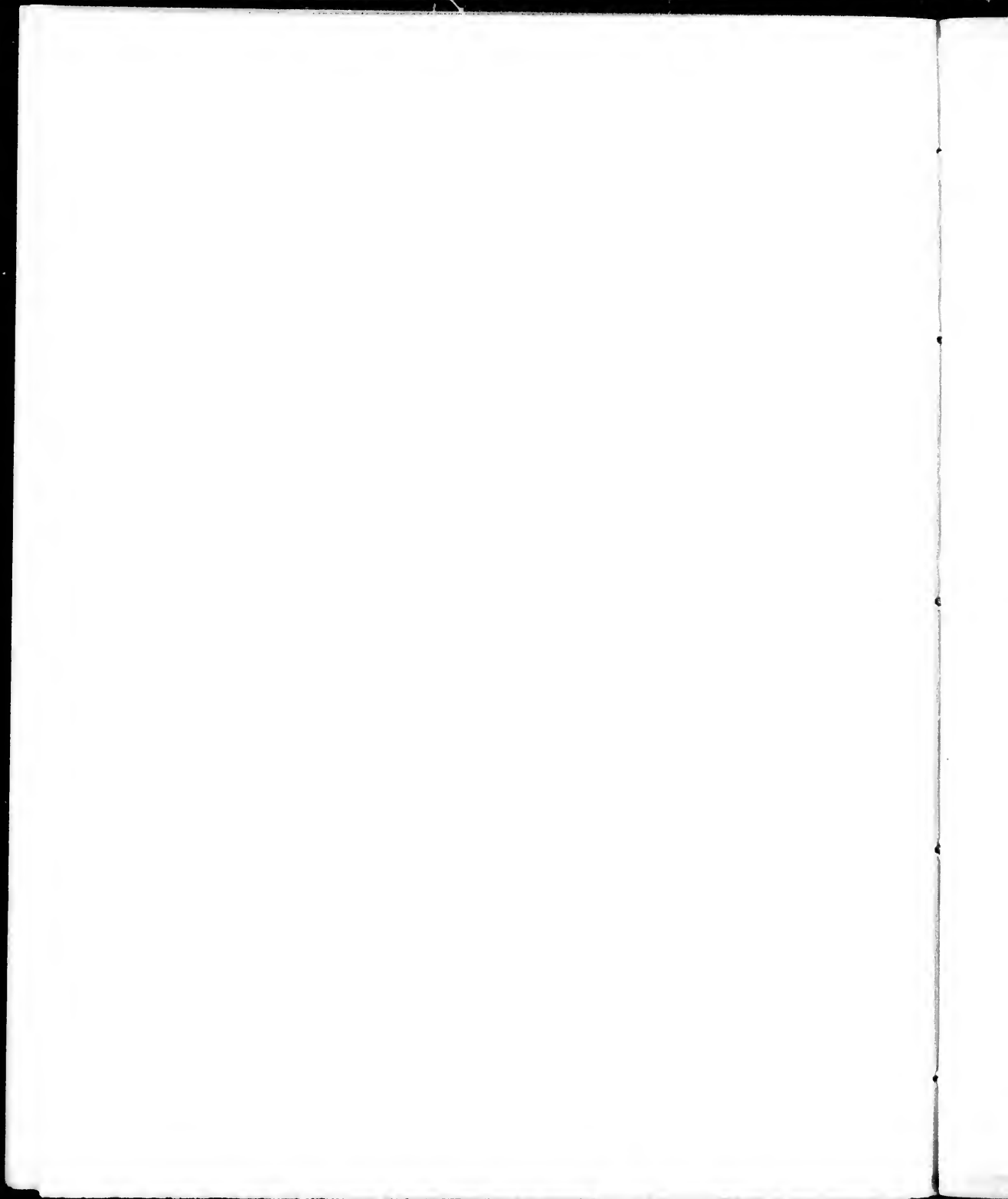
As the round tour of the Saguenay and Lower St. Lawrence rivers may be made upon a comfortable steamer in two days, starting from Quebec, the reader is strongly advised to include it in his tour when he has reached the ancient city.



CHICOUTIMI.

In conclusion, the writer cannot refrain from again expressing his conviction that the day is near at hand when the beautiful forest-environed lakes, which have slept amid the rocky hills of the lower French-Canadian region, until recently undisturbed by any human sound save the lumberman's axe or rifle-shot of the adventurous native huntsman, will speedily become a favorite resort with the sportsman





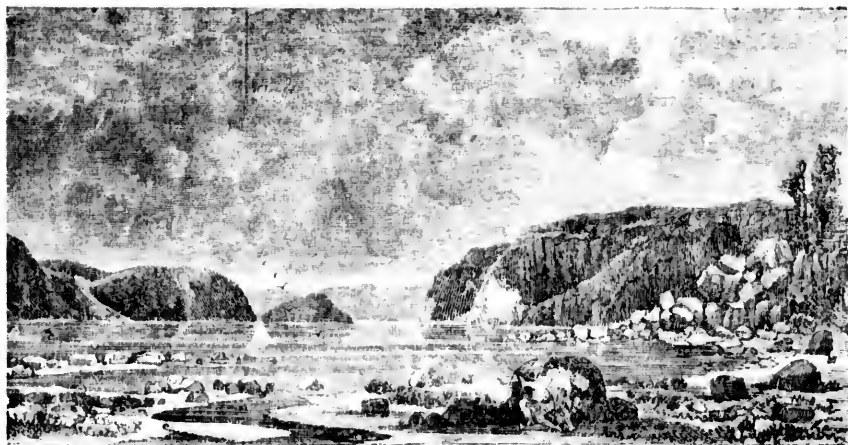
and tourist. As yet, the gamey bass and swift pickerel are hardly acquainted with the wiles of the angler, and are as keen after his seductive bait as the most ardent discipline of the gentle art could wish.



A SAGUENAY ABORIGINE.

The capitalist, keen-eyed and alert for profitable fields of investment, will gain suggestions of value by a survey of the natural riches

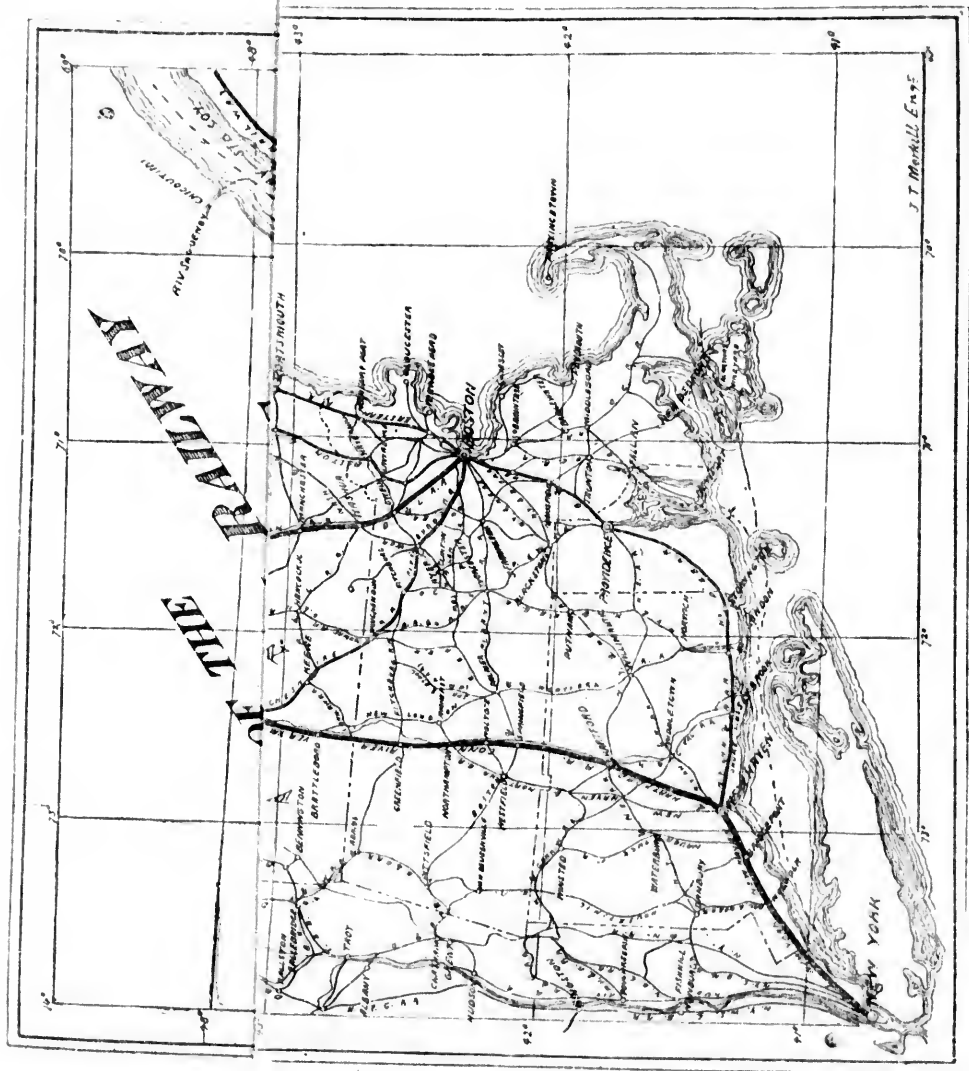




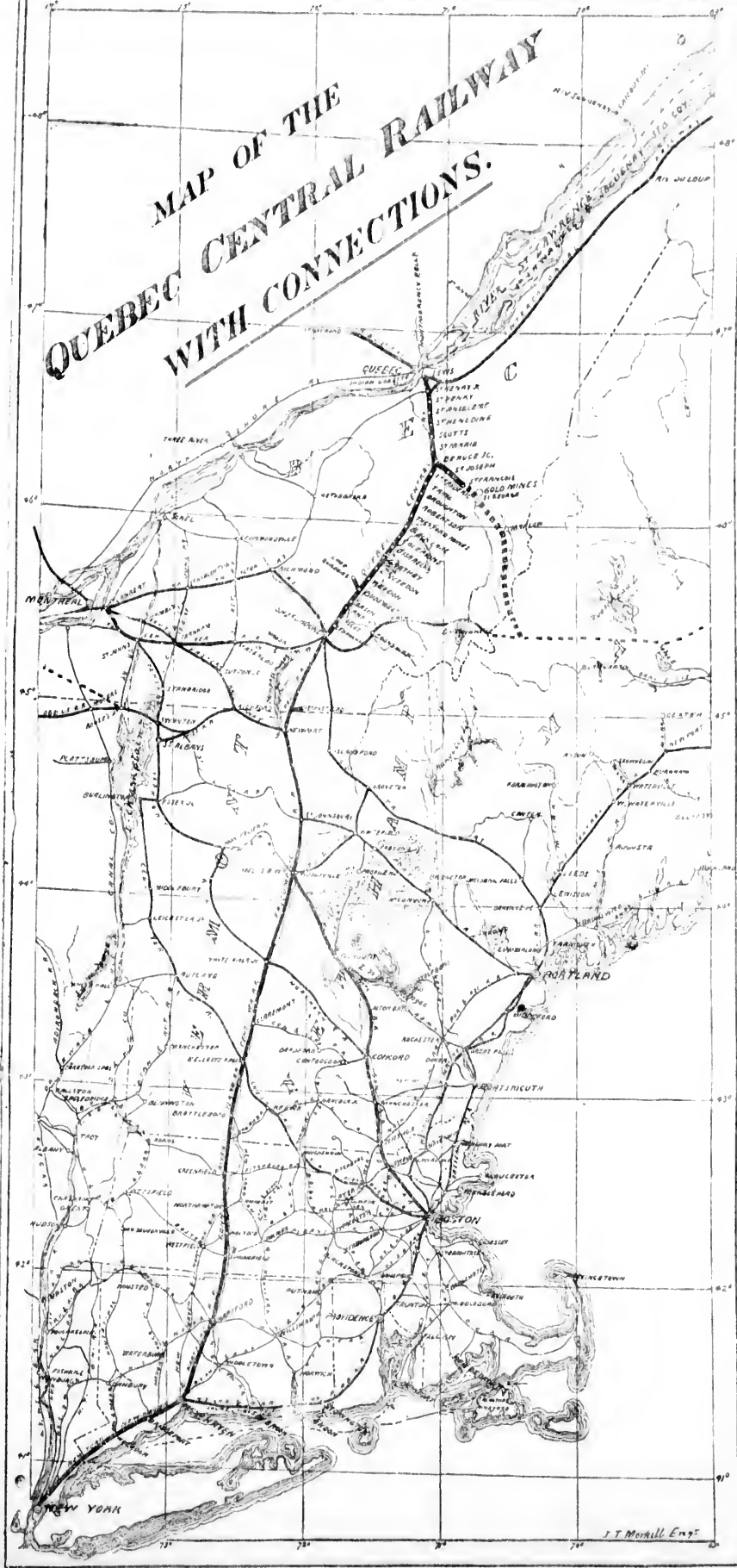
HA HA BAY.

and material possibilities of the region traversed by the Quebec Central Railway ; and the invalid, debilitated by the impure atmosphere of the city or the heavy air of the coast, will find the climate bracing, dry and health-giving.





# MAP OF THE QUEBEC CENTRAL RAILWAY WITH CONNECTIONS.





1885.

## QUEBEC CENTRAL RAILWAY EXCURSIONS

### ROUTES AND RATES OF FARE

## FROM QUEBEC

VIA NEWPORT (ON LAKE MEMPHREMACOG), TO WHITE MOUNTAIN  
POINTS, BOSTON, NEW YORK AND NEW ENGLAND CITIES,  
LAKE CHAMPLAIN, LAKE GEORGE, SARATOGA, &c.

### ✦ EXCURSIONS. ✦

Route No.		
1.	QUEBEC TO SHERBROOKE (limited), Quebec Central Railway, single,	\$3 00
	return by same route, return,	5 00
2.	QUEBEC TO LENNOXVILLE (limited), via Quebec Central Railway, single,	3 00
	return by same route, return,	5 00
3.	QUEBEC TO NEWPORT (on Lake Memphremagog) via Quebec Central Rail- way to Sherbrooke, Passumpsic Railway to Newport, single,	4 40
	return by same route, return,	7 00
4.	QUEBEC TO MONTREAL, P. Q., (via Lake Memphremagog) via Quebec Central Railway to Sherbrooke, Passumpsic Railway to Newport, South Eastern to Montreal, single,	7 00
	for return Montreal to Quebec by St. Lawrence River Steamer, return,	9 00
5.	QUEBEC TO STANSTEAD, P. Q., via Quebec Central to Sherbrooke, Pas- sumpsic to Stanstead, single,	4 35
	return by same route, return,	7 00
6.	QUEBEC TO OWL'S HEAD MOUNTAIN HOUSE, LAKE MEMPHRE- MAGOG, Quebec Central to Sherbrooke, Passumpsic to Newport, Steamer Lady of the Lake to Owl's Head, single,	4 75
	return same route, return,	7 50
7.	QUEBEC TO GEORGEVILLE (Lake Memphremagog), via Quebec Central Railway to Sherbrooke, Passumpsic to Newport, Steamer Lady of th Lake to Georgeville, single,	4 75
	return by same route, return,	7 50
8.	QUEBEC TO MAGOG (Lake Memphremagog), via Quebec Central to Sher- brooke, Passumpsic to Newport, Steamer Lady of the Lake to Magog, single,	5 00
	return by same route, return,	8 00
9.	QUEBEC TO ST. JOHNSBURY, via Quebec Central to Sherbrooke, Passump- sic to St. Johnsbury, single,	5 95
	return by same route, return,	9 00
10.	QUEBEC TO WELL'S RIVER, via Quebec Central to Sherbrooke, Passump- sic to Well's River, single,	6 70
	return by same route, return,	10 00

Special limited Excursion Tickets will be issued to any point on the Passumpsic Railway  
not included in the above at reduced rates on application to Ticket Agent.

### Quebec to Boston and Return via Lake Memphremagog.

Route No.		
11.	Via Sherbrooke, Newport, Well's River, Plymouth, Weirs (Lake Winnepesaukee) Concord, Nashua, Lowell to Boston, single, . . . . .	\$11 00
	return by same route, . . . . .	18 00
12.	Via Sherbrooke, Newport (Lake Memphremagog), Well's River, White River Jct. Concord, Nashua, Lowell to Boston, returning via Lowell, Nashua, Con- cord, Weirs, Plymouth, Well's River, Newport and Sherbrooke to Que- bec. Fare, . . . . .	18 00
13.	Via Sherbrooke, Newport (Lake Memphremagog), Well's River, White River Jct. Bellow's Falls, Fitchburg to Boston, returning same route, . . . . .	18 00
14.	Via Sherbrooke, Newport (Lake Memphremagog), Well's River, White River Jct. Bellow's Falls, Fitchburg to Boston, returning via Lowell, Nashua, Con- cord, Weirs (Lake Winnepesaukee), Plymouth, Well's River, Newport and Sherbrooke to Quebec. Fare, . . . . .	18 00

Tickets can be issued by any of above routes, returning from Newport via South Eastern to Montreal and St. Lawrence River Steamer to Quebec at same rate.

### Quebec to White Mountains and Boston and Return, via Lake Memphremagog.

15.	Via Sherbrooke, Newport (Lake Memphremagog), Well's River, Weirs (Lake Winnepesaukee), Concord, Nashua and Lowell to Boston, returning via Lowell, Nashua, Concord, Weirs, Plymouth, Littleton, Bethlehem Jct., Whitefield, St. Johnsbury, Newport (Lake Memphremagog) and Sher- brooke to Quebec, or the reverse. Fare, . . . . .	21 30
16.	Via Sherbrooke, Newport (Lake Memphremagog), St. Johnsbury, Whitefield, Bethlehem Jct., Fabyan House, Bethlehem Jct., Littleton, Plymouth, Weirs (Lake Winnepesaukee), Concord, Nashua and Lowell to Boston, returning via Lowell, Nashua, Concord, Weirs (Lake Winnepesaukee), Plymouth, Well's River, Newport (Lake Memphremagog), Sherbrooke to Quebec. Fare, . . . . .	22 00
17.	Via Sherbrooke, Newport (Lake Memphremagog), St. Johnsbury, Whitefield, Bethlehem Jct., Fabyan House, Crawford House, North Conway, and Eastern R. R. to Boston, returning via Lowell, Nashua, Concord, Weirs (L. W.), Plymouth, Well's River, Newport (L. M.), Sherbrooke to Que- bec. Fare, . . . . .	22 00
18.	Via Sherbrooke, Newport (L. M.), St. Johnsbury, Whitefield, Bethlehem Jct., Fabyan House, Crawford House, North Conway, Portland and Boston and Maine or Eastern R. R. to Boston, returning via Lowell, Nashua, Concord, Weirs (L. W.), Plymouth, Well's River, Newport (L. M.), Sherbrooke to Quebec. Fare, . . . . .	22 00
19.	Via Sherbrooke, Newport (L. M.), St. Johnsbury, Whitefield, Bethlehem Jct., Fabyan House, Crawford House, North Conway, Portland Steamers to Boston, returning via Lowell, Nashua, Concord, Weirs (Lake Winnepe- saukee), Plymouth, Well's River, Newport (Lake Memphremagog), Sher- brooke to Quebec. Fare, . . . . .	20 75

Tickets can be issued by any of the above routes, returning from Newport via South Eastern Railway to Montreal, and St. Lawrence River Boat to Quebec at same rates.

## Quebec and New York.

Route No.		
20.	Via Sherbrooke, Newport (Lake Memphremagog), Well's River, Concord, Worcester, Springfield, New Haven, to New York,	\$13 00
21.	Quebec to New York and return, same route as No. 20, return,	24 00
22.	Via Sherbrooke, Newport (L. M.), White River Jct., Windsor, Brattleboro, South Vernon, Springfield, New Haven, to New York, single,	13 00
23.	Quebec to New York and return, same route as No. 22, return,	24 00

## Quebec and White Mountains.

24.	QUEBEC TO WHITEFIELD, via Quebec Central R'y, Passumpsic R'y, St. J. and L. C. Railway, Portland & O. & B. C. & M. R'y, single,	6 35
25.	QUEBEC TO BETHLEHEM JCT., via Quebec Central R'y, Pass'c R'y, St. J. & L. C. R'y, P. & O. R'y, and B. C. & M. R'y, single,	6 60
26.	QUEBEC TO TWIN MOUNTAINS, via Quebec Central R'y, Pass'c R'y, St. J. & L. C. R'y, P. & O. R'y and B. C. & M. R'y, single,	6 80
27.	QUEBEC TO FABYAN'S, via Quebec Central R'y, Pass'c, St. J. & L. C. R'y, and P. & O. R'y, single,	7 00
28.	QUEBEC TO CRAWFORDS, via Quebec Central R'y, Pass'c R'y, St. J. & L. C. R'y, and Portland and Ogdensburgh R'y, single,	7 30
29.	QUEBEC TO LANCASTER, via Quebec Central R'y, Pass'c R'y, St. J. & L. C. R'y, P. & O. R'y, and B. C. & M. R'y, single,	6 75
30.	QUEBEC TO JEFFERSON, via Quebec Central R'y, St. J. & L. C. R'y, P. & O. R'y, and B. C. & M. R'y, single,	7 00
31.	QUEBEC TO PROFILE HOTSE, via Q. C. R'y, Pass'c R'y, St. J. & L. C. R'y, P. & O. R'y, and B. C. & M. R'y, single,	8 10
32.	QUEBEC TO PORTLAND, via Q. C. R'y, Pass'c R'y, St. J. & L. C. R'y, and P. & O. R'y, single,	8 50
	return by same route, return,	14 00
33.	QUEBEC TO PORTLAND, via Q. C. R'y to Sherbrooke, and G. T. R. to Portland, single,	8 50
	return by same route, return	14 00
34.	QUEBEC TO GROVETON JCT., via Q. C. R'y to Sherbrooke, and G. T. R. to Groveton Junction, single,	6 70

Special limited Excursion Tickets will be issued to any point on the G. T. R. R'y east of Sherbrooke, to any on the Eastern or Boston and Maine R'y via Portland, and any point on the Boston and Lowell R'y via Groveton Jct., on application to agents.

## Quebec and White Mountains, Saratoga, Lake Champlain, Lake George, &amp;c.

35.	QUEBEC TO SARATOGA, via Sherbrooke, Newport, Well's River, White River Junction, Montpelier, Burlington, Lake Champlain, Steamer to Fort Ticonderoga, and rail to Saratoga. Fare,	14 85
36.	QUEBEC TO SARATOGA, via Sherbrooke, Wells River, Montpelier, Burlington and Rutland. Fare,	14 15
37.	QUEBEC TO SARATOGA, via Sherbrooke, Wells River, Montpelier, Burlington, Lake Champlain, Lake George and Glen Falls. Fare,	15 25

### Quebec to Lake Megantic, P. Q.

Route No.		
38.	Via Quebec Central Railway to Sherbrooke, and International R'y to Lake Megantic, single,	5 00
	return by same route, return,	8 00

#### Side Trips.

39.	BETHLEHEM JUNCTION TO PROFILE HOUSE, FRANCONIA NOTCH, and return, via Profile and Franconia Notch R. R.	3 00
40.	FABYAN HOUSE TO SUMMIT OF MOUNT WASHINGTON and return (via B. C. & M. R'y) Base Station, Mount W. R'y to Summit, returning same route to Fabyans,	6 00
41.	LAKE WINNEPESAUKEE EXCURSION. Round trip from Weirs, via Steamer "Lady of the Lake,"	50
42.	WELLS RIVER TO LITTLETON and return, via Boston and Lowell R.R. White Mts. Div.,	2 00
43.	WELLS RIVER TO GROVETON JCT and return, via Boston and Lowell R. R., White Mts. Div.,	4 90
44.	BETHLEHEM JCT. TO MAPLEWOOD and return, via Profile and Franconia Notch R. R.	70
45.	BETHLEHEM JCT. TO BETHLEHEM and return, via Profile and Franconia Notch R. R.	1 00
46.	WEST BURKE TO WILLOUGHBY LAKE and return, via stage,	1 00
47.	BARTON TO WILLOUGHBY LAKE and return, via Stage and Steamer,	1 00
48.	NEWPORT TO SHERBROOKE and return, via Passumpsic R. R.,	2 00
49.	NEWPORT TO MAGOG and return, via Steamer "Lady of the Lake" or "Mountain Maid,"	1 00
50.	QUEBEC TO MAGOG (on Lake Memphremagog), limited, via Q. C. R'y to Sherbrooke and Central Vermont to Magog, single,	3 75
	return same route,	6 25
51.	QUEBEC TO NEWPORT (on Lake Memphremagog), via Quebec Central R'y to Sherbrooke, Central Vermont to Magog, Steamer "Mountain Maid" to Newport, single,	4 50
	return same route,	7 50
52.	QUEBEC TO GEORGEVILLE (on Lake Memphremagog), via Quebec Central to Sherbrooke, Central Vermont R'y to Magog, Steamer "Mountain Maid" to Georgeville, single,	4 25
	return same route,	7 00
53.	QUEBEC TO MONTREAL, via Quebec Central to Sherbrooke, Central Vermont to Montreal, single,	6 35
	return to Quebec by St. Lawrence River Steamer. Fare,	8 75

#### Excursions to Quebec, &c.

54.	NEWPORT TO QUEBEC, via Pass'c R'y to Sherbrooke and Quebec Central to Quebec, single,	4 40
	return same route,	7 00
55.	NEWPORT TO RIVER DU LOUP OR CACOUNA, via Pass'c R'y to Sherbrooke and Quebec Central R'y to Harlaka Jct. or Quebec, Intercolonial R'y to River du Loup, single,	7 00
	return same route,	11 00

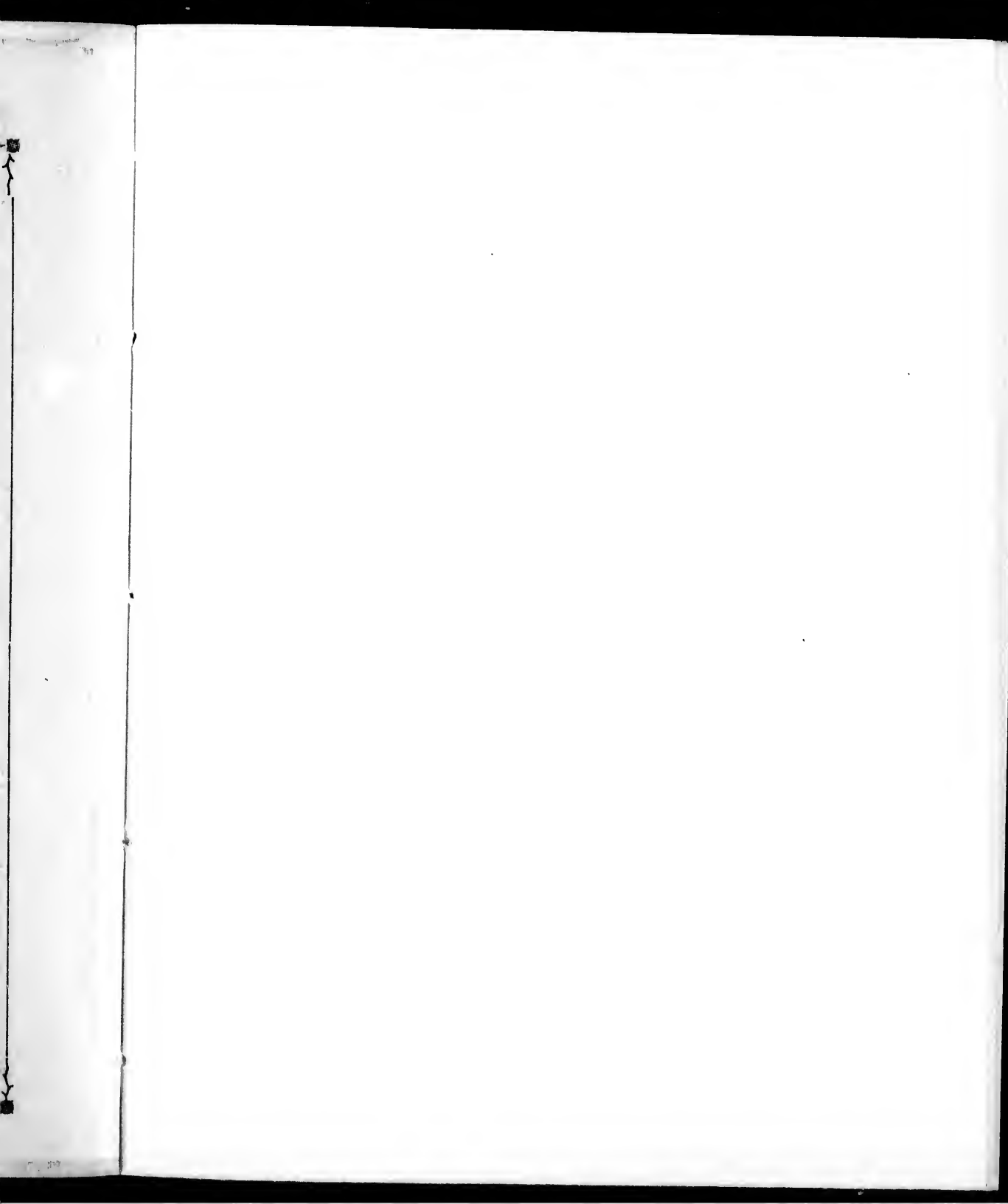


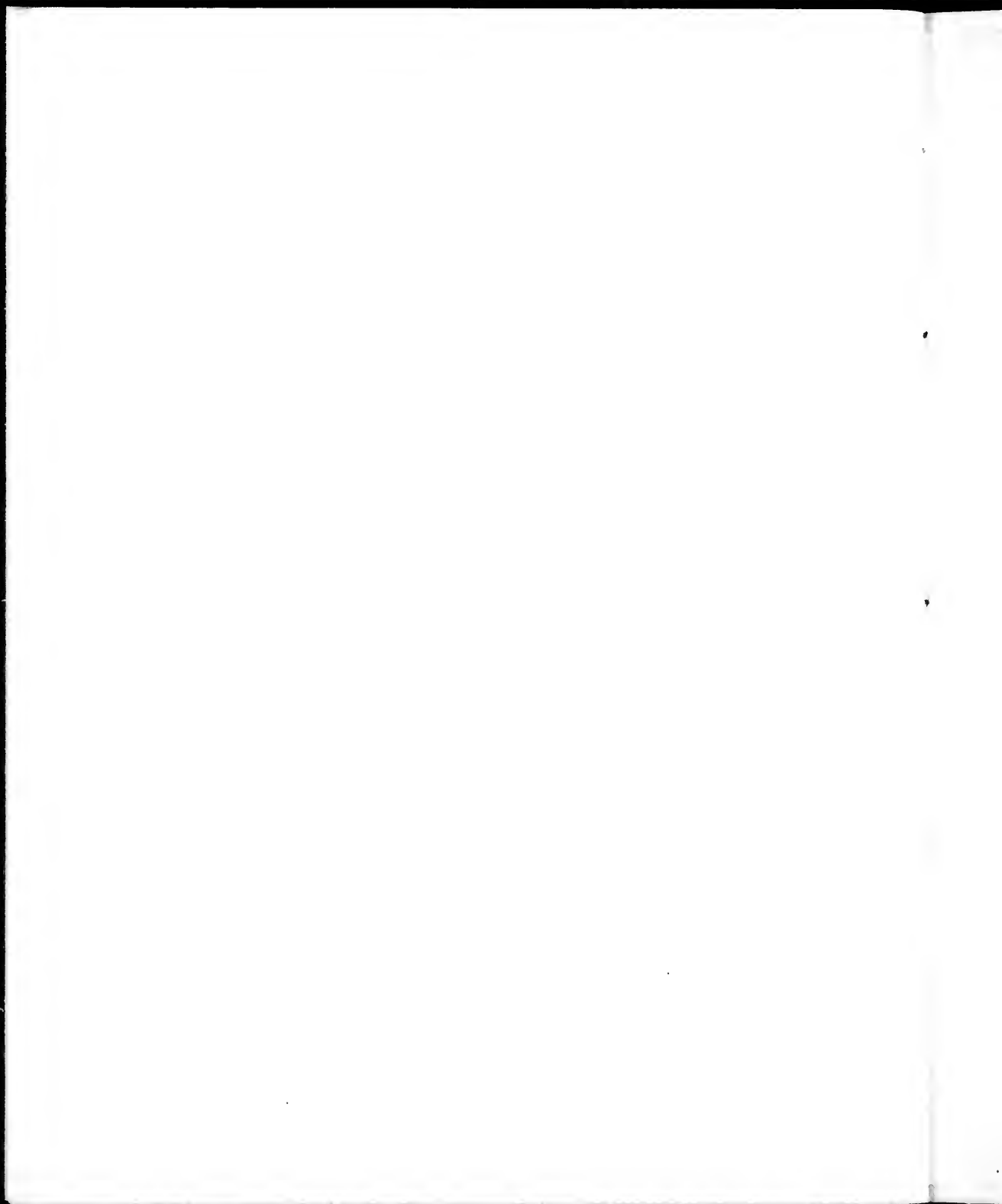
Route No.		
56.	NEWPORT TO MURRAY BAY and return, via Pass'c R'y to Sherbrooke, Quebec Central R'y to Quebec, and Saguenay Steamer to Murray Bay; return same route,	11 00
57.	NEWPORT TO HA! HA! BAY AND CHICOUTIMI and return via Pass'c R'y to Sherbrooke, Quebec Central R'y to Quebec, Saguenay Steamers to Ha! Ha! Bay and Chicoutimi, and return same route,	15 00
58.	NEWPORT TO ST. LEON SPRINGS and return, via Pass'c R'y to Sherbrooke, Quebec Central R'y to Quebec, North Shore R'y to St. Leon Springs, return same route,	8 00
59.	NEWPORT TO MONTREAL, via Pass'c R'y to Sherbrooke, Québec Central R'y to Quebec, St. Lawrence River Steamer to Montreal, single, Return Montreal to Newport by South Eastern Railway,	7 00 9 00
60.	SHERBROOKE TO QUEBEC (limited), via Quebec Central R'y, single, return same route,	3 00 5 00
61.	SHERBROOKE TO RIVER DU LOUP OR CACOUNA, via Quebec Central R'y to Harlaka Jct. or Quebec, and Intercolonial R'y to River du Loup or Cacouna, single, return same route,	5 50 8 75
62.	SHERBROOKE TO MURRAY BAY and return, via Quebec Central R'y to Quebec, Saguenay Steamer to Murray Bay, return same route,	9 00
63.	SHERBROOKE TO HA! HA! BAY AND CHICOUTIMI and return, via Quebec Central R'y to Quebec, Saguenay Steamer to Ha! Ha! Bay and Chicoutimi, return same route,	13 00
64.	SHERBROOKE TO ST. LEON SPRINGS, via Quebec Central to Quebec, and North Shore Railway to Louiseville, single, return by same route,	4 00 6 00
65.	SHERBROOKE TO MONTREAL, via Quebec Central R'y to Quebec, and St. Lawrence River Steamer to Montreal, single, return from Montreal to Sherbrooke via Central Vermont Railway, return from Montreal to Sherbrooke via South Eastern and Pass'c R'y,	5 50 8 75 9 00



## INDEX TO TOURS.

	PAGE
Barton, Vt. ....	38
Bethlehem Junction ..	37
Boston, direct, .....	36
Boston, via White Mountains, etc.,	36
Crawfords, .....	37
Cacouna, .....	38-39
Chicoutimi (Saguenay River trip),	39
Fabyans, .....	37
Fort Ticonderoga, .....	37
Franconia Notch, .....	38
Georgeville (on Lake Memphremagog),	35
"    "    (via Central Vermont and steamer),	38
Groveton Junction, .....	37
Glen Falls, .....	37
Hal Hal Bay (Saguenay River trip).....	39
Jefferson, .....	37
Lennoxville .....	35
Lancaster, .....	37
Lake Champlain, .....	37
Lake George, .....	37
Lake Winnepesaukee, .....	38
Littleton, .....	38
Lake Megantic, .....	38
Montreal (from Newport via Quebec),	39
"    (from Sherbrooke via Quebec),	39
"    (from Quebec via Lake Memphremagog),	35
"    (from Quebec via Central Vermont R'y and St. Johns),	38
Magog (via Lake Memphremagog),	35
"    (via Central Vermont, all rail),	38
Murray Bay (Saguenay River trip)	39
Newport (via Lake Memphremagog),	35
New York .....	37
Owl's Head Mountain House, .....	35
Portland (via White Mountains),	37
"    (via Grand Trunk Railway, from Sherbrooke	37
Profile House, .....	37
Quebec, .....	38-39
River du Loup, .....	38-39
Stanstead, .....	35
St. Johnsbury, .....	35
Saratoga, .....	37
Summit Mount Washington, .....	38
Sherbrooke, .....	35
St. Leon Springs, .....	39
Twin Mountains, .....	37
Wells River, .....	35
Whitefield, .....	37
West Burke, .....	38
Willoughby Lake, .....	38





# The Quebec Central Railway

## NEW ROUTE BETWEEN QUEBEC AND LAKE MEMPHREMAGOG, WHITE MOUNTAIN POINTS, BOSTON, NEW YORK, &c.

### QUEBEC TO BOSTON VIA LAKE MEMPHREMAGOG.

Quebec Express leave Quebec (Q. C. R.) 1:45 p. m., Point Levis (Q. C. R.) 2:15 p. m., Sherbrooke 8:35 p. m., Newport 11:45 p. m., St. Johnsbury 1:15 a. m. Arrives at Concord 5:25 a. m., Manchester 6:25 a. m., Nashua 7:00 a. m., Lowell 7:35 a. m., Boston 8:30 a. m.

**MONARCH BUFFET PARLOR AND SLEEPING CAR** from Point Levis to Wells River (via Quebec Central Railway).

### QUEBEC TO NEW YORK VIA LAKE MEMPHREMAGOG.

Quebec Express leaves Quebec (Q.C.R.) 1:45 p. m., Point Levis (Q.C.R.) 2:15 p. m., Sherbrooke 8:35 p. m., Newport 11:40 p. m., St. Johnsbury 1:15 a. m. Arrives Greenfield 6:03 a. m., Springfield 7:05 a. m., Hartford 8:15 a. m., New Haven 9:24 a. m., New York 11:45 a. m.

**MONARCH BUFFET PARLOR AND SLEEPING CAR** from Point Levis (via Quebec Central Railway) to Springfield.

### BOSTON TO QUEBEC VIA LAKE MEMPHREMAGOG.

Leave Boston 7:00 p. m., Lowell 7:48 p. m., Nashua 8:20 p. m., Manchester 8:54 p. m., Concord 9:30 p. m., St. Johnsbury 2:50 a. m., Newport 5:40 a. m., Sherbrooke 7:45 a. m. Arrive Point Levis (Q. C. R.) 2:10 p. m., arrive Quebec 2:20 p. m.

**MONARCH BUFFET PARLOR AND SLEEPING CAR** from Wells River to Quebec (via Quebec Central Railway).

### NEW YORK TO QUEBEC VIA LAKE MEMPHREMAGOG.

Leave New York 4:30 p. m., New Haven 6:25 p. m., Hartford 7:20 p. m., Springfield 8:15 p. m., Greenfield 9:25 p. m., Wells River 2 a. m., St. Johnsbury 2:50 a. m., Newport 5:40 a. m., Sherbrooke 7:45 a. m. Arrive Point Levis (Q.C.R.) 2:10 p. m., arrive Quebec 2:20 p. m.

**MONARCH BUFFET PARLOR AND SLEEPING CAR** from Springfield to Quebec (via Quebec Central Railway).

*General Offices Quebec Central Railway Company, Sherbrooke, P. Q.*

J. R. WOODWARD,  
General Manager.

A. STEELE,  
Superintendent.

J. H. WALSH,  
Acting General Passenger Agent.

J. T. PRINCE, JR.,  
U. S. Agent, 3 School St., Boston.

SHIPMAN & STOCKING, Ticket Agents, opposite St. Louis Hotel, Quebec.

# PASSUMPSIC RAILWAY.

—THE GREAT HIGHWAY FOR—

⇒ Tourist and Pleasure Travel ⇐

— BETWEEN —


QUEBEC AND OTHER POINTS IN CANADA—TO BOSTON AND  
ALL OTHER NEW ENGLAND CITIES—AND NEW YORK  
VIA LAKE MEMPHREMAGOG—ALSO THE MOST  
DESIRABLE ROUTE TO PORTLAND AND  
OLD ORCHARD BEACH—AND THE  
ONLY ROUTE PASSING THROUGH THE  
CELEBRATED WHITE MOUNTAIN NOTCH—DIRECT  
ALL RAIL ROUTE TO THE SUMMIT OF MOUNT WASHINGTON.



**70** MILES THE SHORTEST ROUTE BETWEEN  
QUEBEC AND NEW YORK.

Passes Lake Memphremagog, Crystal Lake, Lake Massawippi.

200 Miles of Picturesque Scenery

ALONG THE BANKS OF THE PASSUMPSIC AND CONNECTICUT RIVERS.

 ELEGANT MONARCH COY SLEEPING AND PARLOR  
CARS from Quebec to Springfield, and PULLMAN COY CARS  
to Boston via Plymouth and Lake Winnepesaukee.

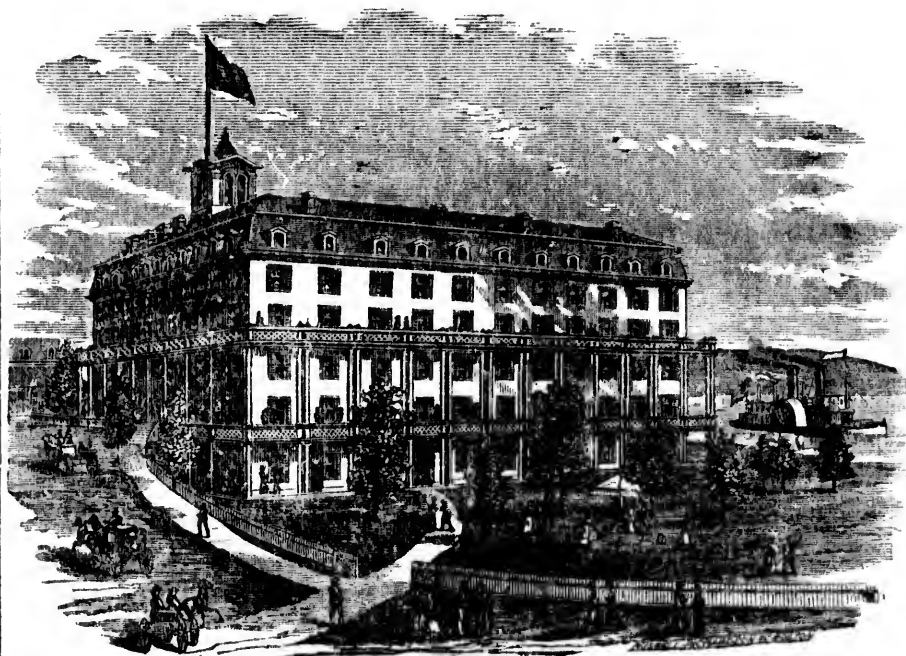
 Ask for Tickets via Lake Memphremagog.   
FOR SALE AT ALL RAILROAD OFFICES.

N. P. LOVERING, JR.,  
GENERAL TICKET AGENT.

{ GENERAL OFFICES, }  
{ LYNDONVILLE, VERMONT }

H. E. FOLSOM,  
SUPERINTENDENT

## NEWPORT, VT.



## MEMPHREMAGOG HOUSE, LAKE MEMPHREMAGOG, NEWPORT, VERMONT.

Fitted with all modern improvements, and furnished handsomely throughout. Contains rooms for four hundred guests, is surrounded by fine piazzas, and supplied with gas and steam and pure spring water; Bath and Billiard Rooms, Bowling Alleys, Croquet and Children's Play-Ground. New Boats of the latest designs. First-class Orchestra. Superior Livery Stable.

The Hotel is located on the shore of the lake, within a few rods of the steamboat landing and the railroad depot. View of the lake and surrounding mountains of surpassing magnificence. Location affords a cool and delightful breeze off the water. Atmosphere particularly favorable for the restoration to health of persons afflicted with pulmonary complaints, malarial disorders, and hay fever. Most perfect system of drainage, and modern sanitary precautions. Drives delightful and exceedingly varied. Steamer "LADY OF THE LAKE" makes two trips daily. TERMS—Per day, \$3 to \$3.50; \$10.50 to \$17.50 per week.

**W. F. BOWMAN, MANAGER.**

(Formerly proprietor from 1869 to 1877.)

# SHERBROOKE HOUSE,

COTE & MEAGHER, PROPRIETORS.

Opposite Union Depot, SHERBROOKE.

TRAVELLERS OR FAMILIES arriving at or leaving Union Depot, Sherbrooke, for Business, Pleasure, or to visit Summer Resorts, Lake Memphremagog, White Mountains, Quebec, Saguenay River, &c., will find superior accommodation at this Hotel. Guests may be assured that no pains will be spared to make a sojourn here pleasant and agreeable in all respects.

REASONABLE RATES FOR CHILDREN AND SERVANTS.

For further information apply to

**COTE & MEAGHER,**

PROPRIETORS.

⊕ **WALTER BLUE,** ⊕

Merchant Tailor & Gents' Furnishing Store,

—WELLINGTON STREET,—

⊕ SHERBROOKE, P. Q. ⊕

Tourists are invited to call and examine my stock on view during the summer, embracing all the finest classes of Goods.

**WALTER BLUE.**



# **MAGOG HOTEL,**

## **SHERBROOKE.**

**FRED GERIKEN, PROPRIETOR.**

**T**HE above is the only first-class Hotel situated in the centre of the City of Sherbrooke; it is directly opposite the Post-Office, and for beauty of situation this House is unsurpassed. To Tourists seeking a comfortable resting place it presents all the attraction that could reasonably be desired.

A FREE OMNIBUS to and from all arrivals and departures of trains.

✦ F R E D ✦ G E R I K E N . ✦

PROPRIETOR.

**LUCKE & MITCHELL,**

—WHOLESALE AND RETAIL—

**HARDWARE MERCHANTS**

WELLINGTON STREET, SHERBROOKE.

Sportsmen are invited to inspect our stock of GUNS, RIFLES, REVOLVERS  
FISHING TACKLE, TENTS, &c., before going elsewhere.

**LUCKE & MITCHELL.**

ESTABLISHED 1840.

R. D. MORKILL & CO.,  
 General & Dry Goods,

*Wellington Street,*

✦ **SHERBROOKE, P. Q.** ✦

—IMPORTERS OF—

**BRITISH AND FOREIGN DRESS FABRICS,**

Silks, Satins, Plushes and Velvets,

\* Kid Gloves, Laces, Ribbons and Hosiery,\*

**MOURNING DRESS GOODS & SPECIALTY.**

Pure Silk Crape,

Scotch and Irish Table Damasks, Napkins and Towels,

Sheetings, Pillow Case Cottons, Lace and Raw Silk

Curtains, and General House Furnishing Goods.

Brussels, Tapestry and Wool Carpets;

Cocoa Mattings, Oil Cloths, Linoleum, &c.


**G. & C. HOSSACK,**  
 Grocers, Wine & Spirit Dealers,

—CORNER OF—

St. Ann & Garden Streets, Upper Town.

OPPOSITE THE RUSSELL HOUSE,

\* \* **QUEBEC.** \* \*

 Fishing Orders attended to and made a specialty of.



**ALBION HOTEL,**

31 PALACE STREET,

\* **Q U E B E C** \*

This popular and well-known Hotel has been recently renovated and thoroughly refurnished, and is now opened to the travelling public. CHARGES MODERATE.

J. A. BERGERON, Manager,

Quebec, 15th June, 1885.

Late Clerk of St. Louis Hotel.

G. R. RENFREW & Co.,  
 35 BUADE STREET, - - UPPER TOWN,  
 ❖ Q U E B B E C. ❖

**FINE FURS.**

Extract from an article in the *London Graphic*, Aug. 16th, 1884, on the Dominion of Canada, by the Most Hon. the Marquis of Lorne, K. G., &c. :—

“There are interesting institutions and good shops to be seen in Quebec, notably the Fur Store of G. R. Renfrew & Co., where a souvenir of Canada in the shape of a “robe” or article of any kind of fur may be obtained at a reasonable price.”

Strangers are invited to inspect our stock of

❖ **MANUFACTURED FURS** ❖

comprising all the richest and most fashionable articles in our line for Ladies and Gentlemen.

# ST. LOUIS HOTEL, QUEBEC, CANADA.



— THIS HOTEL, —

WHICH IS UNRIVALLED FOR

Size, Style, & Locality in Quebec,

has just been completely transformed and modernized throughout, being refitted with new system of drainage and ventilation, passenger elevator, electric bells and lights, &c. In fact, all that modern ingenuity and practical science can devise to promote the comfort and convenience of guests has been supplied.

The ST. LOUIS is eligibly situated in the immediate vicinity of the most delightful and fashionable promenades, the Governor's Garden, the Citadel, Place d'Armes, Dufferin Terrace and the Esplanade, and contains accommodation for 500 guests.

CHATEAU ST. LOUIS HOTEL CO.,  
PROPRIETORS.

WILLIS RUSSELL, President.



