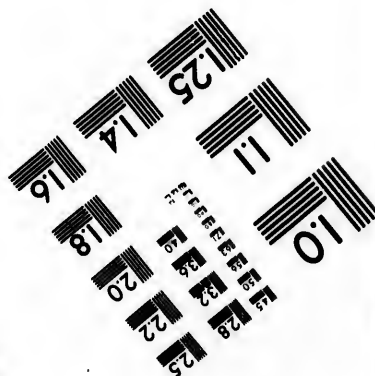
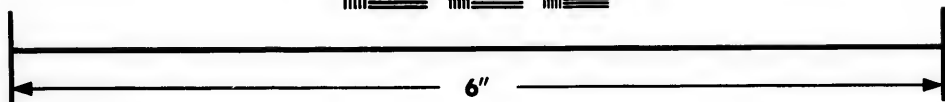
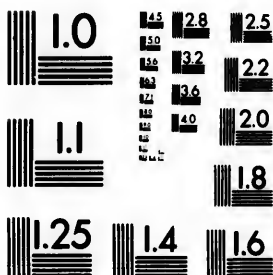


**IMAGE EVALUATION
TEST TARGET (MT-3)**



**Photographic
Sciences
Corporation**

23 WEST MAIN STREET
WEBSTER, N.Y. 14580
(716) 872-4503

**CIHM/ICMH
Microfiche
Series.**

**CIHM/ICMH
Collection de
microfiches.**



Canadian Institute for Historical Microreproductions / Institut canadien de microreproductions historiques

© 1984

Technical and Bibliographic Notes/Notes techniques et bibliographiques

The Institute has attempted to obtain the best original copy available for filming. Features of this copy which may be bibliographically unique, which may alter any of the images in the reproduction, or which may significantly change the usual method of filming, are checked below.

L'Institut a microfilmé le meilleur exemplaire qu'il lui a été possible de se procurer. Les détails de cet exemplaire qui sont peut-être uniques du point de vue bibliographique, qui peuvent modifier une image reproduite, ou qui peuvent exiger une modification dans la méthode normale de filmage sont indiqués ci-dessous.

- | | |
|--|--|
| <input type="checkbox"/> Coloured covers/
Couverture de couleur | <input type="checkbox"/> Coloured pages/
Pages de couleur |
| <input type="checkbox"/> Covers damaged/
Couverture endommagée | <input type="checkbox"/> Pages damaged/
Pages endommagées |
| <input type="checkbox"/> Covers restored and/or laminated/
Couverture restaurée et/ou pelliculée | <input type="checkbox"/> Pages restored and/or laminated/
Pages restaurées et/ou pelliculées |
| <input type="checkbox"/> Cover title missing/
Le titre de couverture manque | <input checked="" type="checkbox"/> Pages discoloured, stained or foxed/
Pages décolorées, tachetées ou piquées |
| <input type="checkbox"/> Coloured maps/
Cartes géographiques en couleur | <input type="checkbox"/> Pages detached/
Pages détachées |
| <input type="checkbox"/> Coloured ink (i.e. other than blue or black)/
Encre de couleur (i.e. autre que bleue ou noire) | <input checked="" type="checkbox"/> Showthrough/
Transparence |
| <input type="checkbox"/> Coloured plates and/or illustrations/
Planches et/ou illustrations en couleur | <input type="checkbox"/> Quality of print varies/
Qualité inégale de l'impression |
| <input checked="" type="checkbox"/> Bound with other material/
Relié avec d'autres documents | <input type="checkbox"/> Includes supplementary material/
Comprend du matériel supplémentaire |
| <input type="checkbox"/> Tight binding may cause shadows or distortion
along interior margin/
La reliure serrée peut causer de l'ombre ou de la
distortion le long de la marge intérieure | <input type="checkbox"/> Only edition available/
Seule édition disponible |
| <input type="checkbox"/> Blank leaves added during restoration may
appear within the text. Whenever possible, these
have been omitted from filming/
Il se peut que certaines pages blanches ajoutées
lors d'une restauration apparaissent dans le texte,
mais, lorsque cela était possible, ces pages n'ont
pas été filmées. | <input type="checkbox"/> Pages wholly or partially obscured by errata
slips, tissues, etc., have been refilmed to
ensure the best possible image/
Les pages totalement ou partiellement
obscurcies par un feuillet d'errata, une pelure,
etc., ont été filmées à nouveau de façon à
obtenir la meilleure image possible. |
| <input type="checkbox"/> Additional comments:/
Commentaires supplémentaires: | |

This item is filmed at the reduction ratio checked below/
Ce document est filmé au taux de réduction indiqué ci-dessous.

10X	12X	14X	16X	18X	20X	22X	24X	26X	28X	30X	32X
<input type="checkbox"/>	<input type="checkbox"/>	<input type="checkbox"/>	<input type="checkbox"/>	<input type="checkbox"/>	<input type="checkbox"/>	<input type="checkbox"/>	<input type="checkbox"/>	<input checked="" type="checkbox"/>	<input type="checkbox"/>	<input type="checkbox"/>	<input type="checkbox"/>

The copy filmed here has been reproduced thanks to the generosity of:

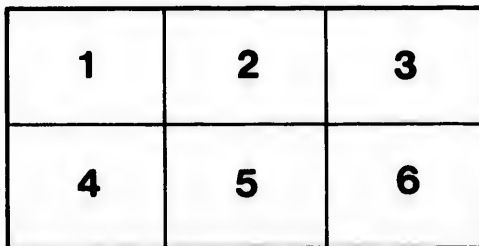
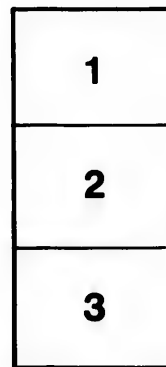
National Library of Canada

The images appearing here are the best quality possible considering the condition and legibility of the original copy and in keeping with the filming contract specifications.

Original copies in printed paper covers are filmed beginning with the front cover and ending on the last page with a printed or illustrated impression, or the back cover when appropriate. All other original copies are filmed beginning on the first page with a printed or illustrated impression, and ending on the last page with a printed or illustrated impression.

The last recorded frame on each microfiche shall contain the symbol \rightarrow (meaning "CONTINUED"), or the symbol ∇ (meaning "END"), whichever applies.

Maps, plates, charts, etc., may be filmed at different reduction ratios. Those too large to be entirely included in one exposure are filmed beginning in the upper left hand corner, left to right and top to bottom, as many frames as required. The following diagrams illustrate the method:



L'exemplaire filmé fut reproduit grâce à la générosité de:

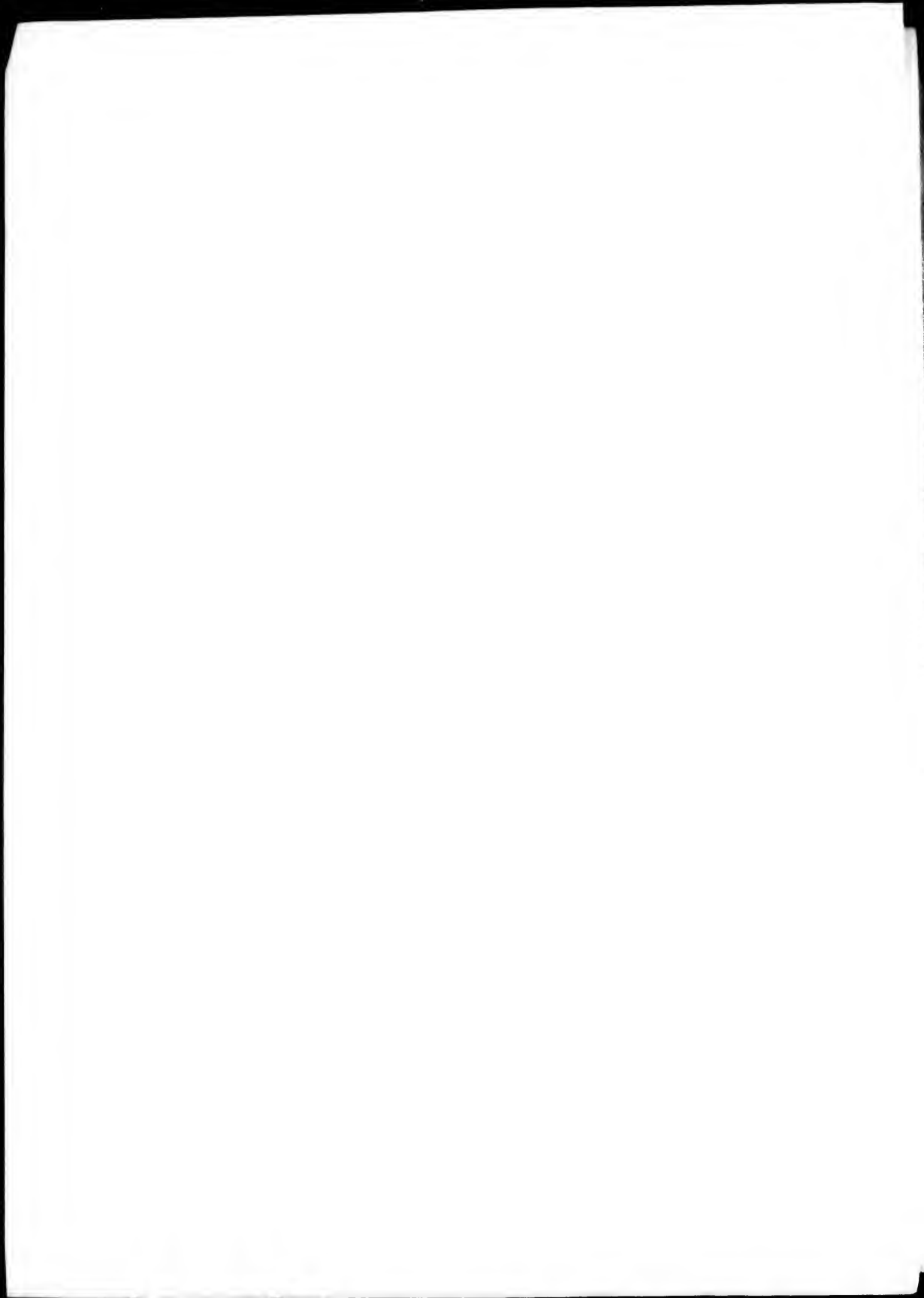
Bibliothèque nationale du Canada

Les images suivantes ont été reproduites avec le plus grand soin, compte tenu de la condition et de la netteté de l'exemplaire filmé, et en conformité avec les conditions du contrat de filmage.

Les exemplaires originaux dont la couverture en papier est imprimée sont filmés en commençant par le premier plat et en terminant soit par la dernière page qui comporte une empreinte d'impression ou d'illustration, soit par le second plat, selon le cas. Tous les autres exemplaires originaux sont filmés en commençant par la première page qui comporte une empreinte d'impression ou d'illustration et en terminant par la dernière page qui comporte une telle empreinte.

Un des symboles suivants apparaîtra sur la dernière image de chaque microfiche, selon le cas: le symbole \rightarrow signifie "A SUIVRE", le symbole ∇ signifie "FIN".

Les cartes, planches, tableaux, etc., peuvent être filmés à des taux de réduction différents. Lorsque le document est trop grand pour être reproduit en un seul cliché, il est filmé à partir de l'angle supérieur gauche, de gauche à droite, et de haut en bas, en prenant le nombre d'images nécessaire. Les diagrammes suivants illustrent la méthode.



The Humble
A D D R E S S

Of the Right Honourable the
Lords Spiritual and Temporal
In Parliament assembled,

PRESENTED TO

H I S M A J E S T Y

On *Friday* the Third Day of *December*, 1756.

W I T H

His Majesty's

MOST GRACIOUS

A N S W E R.

L O N D O N :

Printed by *Thomas Baskett*, Printer to the King's most Excellent Majesty;
and by the Assigns of *Robert Baskett*. 1756.

Die Veneris, 3^o Decembris, 1756.

Ordere*d* by the Lords Spiritual and Temporal in Parliament assembled, That the Address of this House presented to His Majesty, and His Majesty's most Gracious Answer thereunto, be forthwith printed, and published.

Ashley Cooper,
Cler' Parliamentor'

The
able
men



our stron
and effe
Honour
Your Su

Permi
Your M
causing
juncture

With
to appre
for that
Succour
Majesty
recomm
may en
Success

The Humble ADDRESS of the Right Honourable the Lords Spiritual and Temporal in Parliament assembled.

Die Jovis, 2^o Decembris, 1756.

Most Gracious Sovereign,



WE, Your Majesty's most dutiful and loyal Subjects, the Lords Spiritual and Temporal, in Parliament assembled, beg Leave to return Your Majesty our humble Thanks for Your most gracious Speech from the Throne.

The Importance of the present Crisis, and the dangerous Consequences which may result from the unnatural Union of Councils in *Europe*, are so sensibly felt by this House, that we should think ourselves wanting in Duty to Your Majesty, and our Country, if we did not beg Leave to offer, at Your Royal Feet, our strongest Assurances, that we will, to the utmost of our Power, promote and effectuate such Measures, as shall be found expedient for vindicating the Honour of Your Crown, and asserting the just Rights of Your Majesty, and Your Subjects.

Permit us to return Your Majesty our most humble and grateful Thanks for Your Majesty's gracious Condescension to the Request of Your Parliament, in causing a Body of Your Electoral Troops to come into this Country, at a Conjunction so critical to its Preservation and Defence.

With the deepest Sense of our Obligations to Your Majesty, we beg Leave to approach Your Throne, there to offer the Tribute of our warmest Gratitude, for that paternal Care and Solitude, which Your Majesty has expressed for the Succour and Preservation of *America*; nor are we less sensibly affected with Your Majesty's gracious Attention to the Safety and Honour of this Kingdom, by recommending to our Care the forming such a Plan of Defence at Home, as may enable Your Majesty to exert the Power of *Great Britain* with Vigour and Success Abroad.

The

The many Blessings we enjoy under Your Majesty's mild and gracious Government, call for the warmest and sincerest Acknowledgements of our Hearts; and demand on our Part, the most firm and loyal Assurances to Your Majesty, that, not discouraged by any unprosperous Events of War, we will, with the greater Ardour and Alacrity, employ our most zealous Efforts to extricate Your Majesty from all Difficulties, with Honour and Dignity to Your Majesty's Crown, and Prosperity to Your People.

We beg Leave to return Your Majesty the Thanks of this House, for the tender and compassionate Regard Your Majesty has shewn to the Sufferings of the poorer Sort, from the high Price of Corn; and to assure Your Majesty, that we will take that Matter into our immediate Consideration, in order to provide such speedy and adequate Relief, as the Nature and Importance of the Case require.

His MAJESTY's most Gracious ANSWER.

My LORDS,

I Return you My hearty Thanks for this very dutiful and affectionate Address. The warm Expressions, with which you repeat the Assurances of your Determination to exert yourselves in the Defence of the Rights and Possessions of My Crown, give Me the greatest Satisfaction; and you may be assured, the only Use I shall make of the Confidence you repose in Me, will be to pursue such Measures, as the present critical Conjunction renders necessary for the Welfare and Prosperity of My Kingdoms.

F I N I S.

