

**CIHM
Microfiche
Series
(Monographs)**

**ICMH
Collection de
microfiches
(monographies)**



Canadian Institute for Historical Microreproductions / Institut canadien de microreproductions historiques

© 1998

Technical and Bibliographic Notes/Notes techniques et bibliographiques

The Institute has attempted to obtain the best original copy available for filming. Features of this copy which may be bibliographically unique, which may alter any of the images in the reproduction, or which may significantly change the usual method of filming, are checked below.

L'Institut a microfilmé le meilleur exemplaire qu'il lui a été possible de se procurer. Les détails de cet exemplaire qui sont peut-être uniques du point de vue bibliographique, qui peuvent modifier une image reproduite, ou qui peuvent exiger une modification dans la méthode normale de filmage sont indiqués ci-dessous.

- Coloured covers/
Couverture de couleur
- Covers damaged/
Couverture endommagée
- Covers restored and/or laminated/
Couverture restaurée et/ou pelliculée
- Cover title missing/
Le titre de couverture manque
- Coloured maps/
Cartes géographiques en couleur
- Coloured ink (i.e. other than blue or black)/
Encre de couleur (i.e. autre que bleue ou noire)
- Coloured plates and/or illustrations/
Planches et/ou illustrations en couleur
- Bound with other material/
Relié avec d'autres documents
- Tight binding may cause shadows or distortion along interior margin/
La reliure serrée peut causer de l'ombre ou de la distorsion le long de la marge intérieure
- Blank leaves added during restoration may appear within the text. Whenever possible, these have been omitted from filming/
Il se peut que certaines pages blanches ajoutées lors d'une restauration apparaissent dans le texte, mais, lorsque cela était possible, ces pages n'ont pas été filmées.
- Additional comments:/
Commentaires supplémentaires:

- Coloured pages/
Pages de couleur
- Pages damaged/
Pages endommagées
- Pages restored and/or laminated/
Pages restaurées et/ou pelliculées
- Pages discoloured, stained or foxed/
Pages décolorées, tachetées ou piquées
- Pages detached/
Pages détachées
- Showthrough/
Transparence
- Quality of print varies/
Qualité inégale de l'impression
- Includes supplementary material/
Comprend du matériel supplémentaire
- Only edition available/
Seule édition disponible
- Pages wholly or partially obscured by errata slips, tissues, etc., have been refilmed to ensure the best possible image/
Les pages totalement ou partiellement obscurcies par un feuillet d'errata, une pelure, etc., ont été filmées à nouveau de façon à obtenir la meilleure image possible.

This item is filmed at the reduction ratio checked below/
Ce document est filmé au taux de réduction indiqué ci-dessous.

10X	14X	18X	22X	26X	30X
<input type="checkbox"/>	<input type="checkbox"/>	<input type="checkbox"/>	<input checked="" type="checkbox"/>	<input type="checkbox"/>	<input type="checkbox"/>
12X	16X	20X	24X	28X	32X

The copy filmed here has been reproduced thanks to the generosity of:

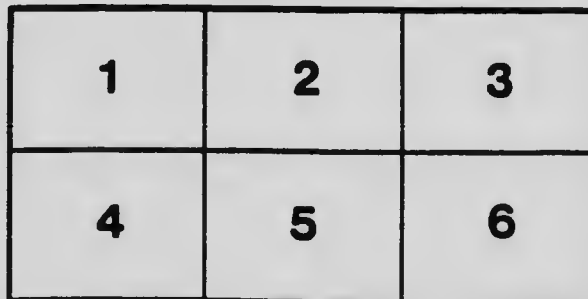
Toronto Reference Library
Special Collections

The images appearing here are the best quality possible considering the condition and legibility of the original copy and in keeping with the filming contract specifications.

Original copies in printed paper covers are filmed beginning with the front cover and ending on the last page with a printed or illustrated impression, or the back cover when appropriate. All other original copies are filmed beginning on the first page with a printed or illustrated impression, and ending on the last page with a printed or illustrated impression.

The last recorded frame on each microfiche shell contain the symbol \rightarrow (meaning "CONTINUED"), or the symbol ∇ (meaning "END"), whichever applies.

Maps, plates, charts, etc., may be filmed at different reduction ratios. Those too large to be entirely included in one exposure are filmed beginning in the upper left hand corner, left to right and top to bottom, as many frames as required. The following diagrams illustrate the method:



L'exemplaire filmé fut reproduit grâce à la générosité de:

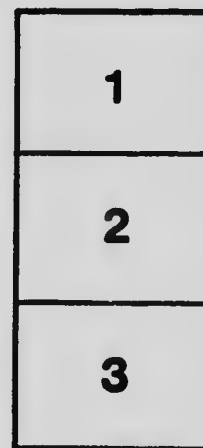
Toronto Reference Library
Special Collections

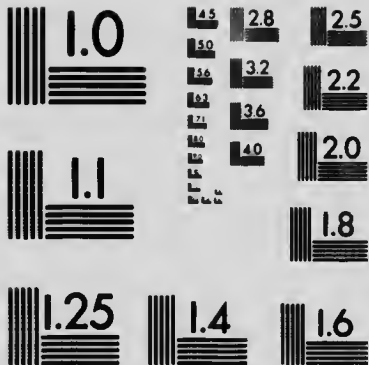
Les images suivantes ont été reproduites avec le plus grand soin, compte tenu de la condition et de la netteté de l'exemplaire filmé, et en conformité avec les conditions du contrat de filmage.

Les exemplaires originaux dont la couverture en papier est imprimée sont filmés en commençant par le premier plat et en terminant soit par la dernière page qui comporte une empreinte d'impression ou d'illustration, soit par le second plat, selon le cas. Tous les autres exemplaires originaux sont filmés en commençant par la première page qui comporte une empreinte d'impression ou d'illustration et en terminant par la dernière page qui comporte une telle empreinte.

Un des symboles suivants apparaîtra sur la dernière image de chaque microfiche, selon le cas: le symbole \rightarrow signifie "A SUIVRE", le symbole ∇ signifie "FIN".

Les cartes, planches, tableaux, etc., peuvent être filmés à des taux de réduction différents. Lorsque le document est trop grand pour être reproduit en un seul cliché, il est filmé à partir de l'angle supérieur gauche, de gauche à droite, et de haut en bas, en prenant le nombre d'images nécessaire. Les diagrammes suivants illustrant la méthode.





MICROCOPY RESOLUTION TEST CHART
NATIONAL BUREAU OF STANDARDS
STANDARD REFERENCE MATERIAL 1010a
(ANSI and ISO TEST CHART No. 2)



STRATH GOWAN

*Copyright, Canada, 1912, by Dovercourt
Land, Building and Savings Co., Limited*

STRATH GOWAN
THE SOUTHERN ANNEX
TO LAWRENCE PARK



THE DOVERCOURT LAND
BUILDING AND SAVINGS CO.
LIMITED
24 ADELAIDE ST EAST
TORONTO
W.S. DINNICK TELEPHONE
PRESIDENT MAIN - 7281.



A STRATH GOWAN ROAD RIVALING THE
FAR-FAMED LANES OF DEVONSHIRE

BR 917.13541 576

STRATH GOWAN

SOUTHERN ANNEX
TO LAWRENCE PARK



SUNLIGHT AND SHADE IN THE WOOD, STRATH GOWAN



NOTHING like it exists in all Ontario!" One who has lived here seventy years and has travelled the province over speaks thus of "Strath Gowan"—and he is right. Imagine a deep, shadowy forest—no bush or saplings and impenetrable underbrush, such as you will meet anywhere—but a forest of great trees that far up in the air mingle their branches together in a roof that all but shuts out the sky. Great tree trunks fill the view on every side, most of them too large to be encircled by a man's arms and all of them standing straight up out of the undulating, brown-leaf covered soil to rise twenty, thirty or forty feet in the air without so much as



STRATH GOWAN

SOUTHERN ANNEX
to LAWRENCE PARK



FORMAL GARDEN—LAWRENCE PARK ESTATE



a bend or a knot to spoil the wonderful symmetry of their pillared proportions.

In the midst of this you walk on and on, following the scarcely distinguishable paths, over which a horse and buggy may readily be driven. Oak, pine, beech and maple are all about you. In the distance their trunks form an unbroken, seemingly impenetrable fence of heroic height. You are in a forest such as does not elsewhere exist this side of the Metagami, and there, only in a few small sections as yet untouched by the lumberman. This is original timber—no second growth is here. When they were sturdy saplings, Toronto was not even a name in the woods. With something of a shock one remembers this forest, the beautiful glen and rolling fields that lead

STRATH GOWAN

SOUTHERN ANNEX
10 LAWRENCE ST. R.



ONE OF THE WOODLAND PATHS—STRATH GOWAN

into it are now a part of that fast-spreading city. You are swallowed up in a mighty wood to which the eye can see no end, and you try to realize you are still within the city limits.

It is thus Strath Gowan impresses one at first acquaintance. In walking through its hundred odd acres surprise follows upon surprise until there comes the realization that here within the limits of the City of Toronto is one of the most magnificent home-building sites to be found within the borders of any city in the world.

Toronto has ever been fortunate in this respect. East and west she has spread over stretches of beautiful country. To the north she has been even more fortunate. As a climax to the wide area



STRATH GOWAN

SOUTHERN ANNEX
to LAWRENCE PARK



AN OPEN SPACE IN STRATH GOWAN



of garden city that, in accordance with modern ideas, is springing up across her north end, she has the Lawrence Park Estates fast being built up into one of the most beautiful residential districts of this continent.

Strath Gowan adjoins this property on the south. It is fitting that the splendid enterprise that has directed the skill of the landscape architect and gardener to the successful planning and actual laying-out of this great property should take Strath Gowan in hand to develop its beauties and to take all possible unique advantage of them in preparing it for the beautiful homes that will be shortly erected within its borders.

There is an historic interest attaching to Strath Gowan that in a measure ex-

STRATH GOWAN

SOUTHERN ANNEX
to LAWRENCE PARK



A WILLOW-FRINGED BROOK RUNNING THROUGH THE GLEN

plains why it has stood through all the years undeseccrated by the axe of lumberman and unbroken by the levelling plow of the farmer. A generation or two ago the name Jesse Ketchum meant much in Upper Canada. The benefices of the man whom school-children of today are taught to revere extended far beyond the little town Toronto then was. Ere the surrounding forest had been levelled and the country entirely divided up into farms he had chosen Strath Gowan as his homestead, building his house on the edge of the woods, fostering and guarding with loving care the original beauties of the estate. Those to whose ownership it later passed were equally minded it should retain the glories that had endeared it to the heart of



STRATH GOWAN

SOUTHERN ANNEX
to LAWRENCE PARK



MAGNIFICENT MAPLE AND PINE-CLAD HILL TOP



Jesse Ketchum. Thus it still stands, an unequalled example of what Ontario was one hundred years ago—truly, a magnificent bit of the unreconstructible past.

Intrinsic beauty of surroundings is much to the home-builder. But no less important is the matter of convenient and suitable situation. Strath Gowan is no less favored in one than it is in the other.

The recent annexation of North Toronto has placed it well within the city limits, ensuring that, within a short time, a direct car line will connect it with the centre of the city. The entrance is on the east side of Yonge Street, within a few yards of the Glengrove stop on the Metropolitan line. Twenty-five minutes on the street car will land one at King and Yonge Streets. Being several hun-

STRATH GOWAN

SOUTHERN ANNEX
to LAWRENCE PARK



AFTERNOON SHADOWS IN STRATH GOWAN WOOD

dred feet above the level of the lake it has all the advantages of pure, dry air, such as the growth of a great manufacturing city makes impossible further south. The soil is light and sandy, affording the best possible drainage. The healthfulness of the district is thus guaranteed.

The estate is entered from Yonge Street through a long avenue of pines that lead to the old Ketchum homestead, a building which will long remain one of the landmarks of the district. Passing this on the north side the roadway leads down through the beautiful glen that has given the district its name. Here runs a little stream that finds its way through the ravine that fronts the Lawrence Park Estates, past wooded



STRATH GOWAN

SOUTHERN ANNEX
to LAWRENCE PARK



A SWEEP OF VALLEY IN BETWEEN THE PINES



knolls and well-kept lawns until, having gone through Strath Gowan's glen, it finds its way between the hills and into the Don River.

It is at this point one is struck with the remarkably English character of the scene, in which it bears a distinct resemblance to the unrivaled beauty of the grounds of the Rosedale Golf Club which lie considerably to the north. The broad ravine has for many years been divided into grazing paddocks. Their close-clipped green sward sets out the foliage of the trees of mature, sturdy growth that grace the landscape. To the south the land rises gently, running on this hand to a thick wood, splendid in variegated colorings, and on that, over the hill and out across country.

STRATH GOWAN

SOUTHERN ANNEX
to LAWRENCE PARK



A SHADOW-CHECKERED ROAD—STRATH GOWAN

The road runs through this for about a quarter of a mile and on into the shade of the great trees. In a moment the scene has completely changed. The open, hilly country that borders the glen has become a more gently undulating forest, surely destined to be far-famed as richest in natural beauty of all Toronto's beautiful residential districts.

It is true that most of the charm of Strath Gowan might easily be destroyed at the hands of those who would indiscriminately run roads through it, cut it up into building lots and erect thereon such houses as are too often to be seen marring places of great natural beauty. That such a thing would happen to Strath Gowan is inconceivable. That which has already been done in other districts by the



STRATH GOWAN

SOUTHERN ANNEX
to LAWRENCE PARK



AN OPEN PLAIN ON THE EDGE OF THE WOOD



Dovercourt Land, Building and Savings Company is guarantee that no desecration of this unique district will take place. The present condition of the Lawrence Park Estates is sure indication that, rather than spoiled and relegated to the commonplace, Strath Gowan will achieve added charm in the process of becoming a district of high-class homes.

Landscape architects of continental reputation will bring their skill and experience to the task of mapping out the roads that are to wind their way through this scene of ever-changing charm and interest. The beauties of Strath Gowan have been too many centuries in the making to allow them to be disregarded now. Together with its planning and actual laying-out, will go

STRATH GOWAN

SOUTHERN ANNEX
to LAWRENCE PARK



WINDING, UNDULATING ROADS THROUGH THE WOODLAND

forward the work of installing drains, gas and electric light, so that it will be equipped with every convenience obtainable in the heart of the city before any buildings are erected upon it.

Very generally in Europe and in some places in America the art of town-planning has a very high place in modern science. The home-builders of the present day, who are making the world of to-morrow, are seeking to make more beautiful the surroundings amongst which men live—hence the art of town-planning and garden-suburb building.

All this will find its best expression in the laying-out of Strath Gowan. The desire of every man to plant his home amidst the natural beauties of the country and thus give his wife and children the



STRATH GOWAN

SOUTHERN ANNEX
to LAWRENCE PARK



ON THE EDGE OF THE FOREST, STRATH GOWAN



pleasures and opportunities for health that are to a greater or less extent denied the city-dweller is responsible for the ever-growing popularity of country dwelling. It is only when large tracts of beautiful country such as Strath Gowan and the Lawrence Park Estates are taken in hand by responsible and enterprising organizations thoroughly alive to the progression of modern thought in relation to home-planning as the Dovercourt Land, Building and Savings Co. has proved itself to be that this garden suburb planning can be accomplished with anything like success.

In these two estates this great work is going forward as it is nowhere else in Canada. Each is the complement of the other. The unexampled beauties of

STRATH GOWAN

SOUTHERN ANNEX
to LAWRENCE PARK



ENTRANCE TO HOMESTEAD OF NICHOLAS GARLAND

Strath Gowan are such as would make famous any city in the world. When, in the course of a short while, it is judiciously filled with such houses as the overseeing architects of the estate shall have passed upon as fitting to the surroundings, it will in sheer beauty and charm far surpass anything in Canada and equal any of the world's most famous garden suburbs.

One can imagine these woods and sunny glens re-echoing the voices of healthy, happy children, while here and there through the trees appear artistic, well-designed houses (not necessarily of great cost) blending with the scene, and in winter and summer making a series of pictures to which every hour of the day and night will impart new delights.



NOTE

The photographs
and other materials
for this booklet
were gathered
in October,
1912



Entered according to Act of the Parliament of Canada in the year 1912

ROUS & MANN, LIMITED
DESIGNERS AND PRINTERS
12 YORK STREET, TORONTO

