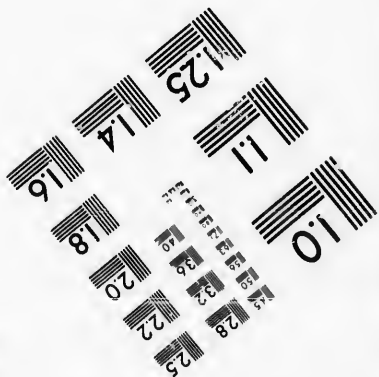
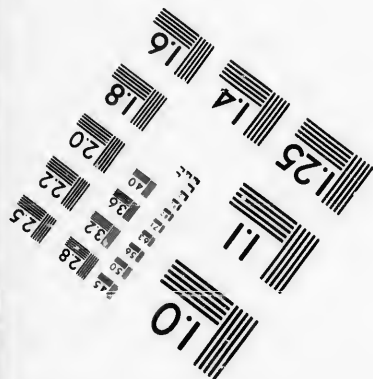
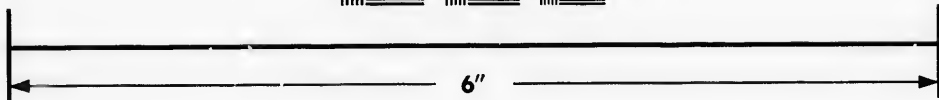
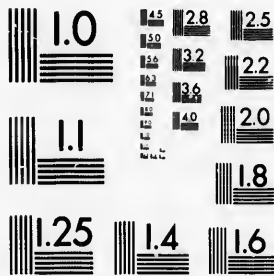


**IMAGE EVALUATION
TEST TARGET (MT-3)**



**Photographic
Sciences
Corporation**

23 WEST MAIN STREET
WEBSTER, N.Y. 14580
(716) 872-4503

Ca

1.4 2.8 2.5
3.2 2.2
3.0
1.8

**CIHM/ICMH
Microfiche
Series.**

**CIHM/ICMH
Collection de
microfiches.**



Canadian Institute for Historical Microreproductions / Institut canadien de microreproductions historiques

1.0

© 1987

Technical and Bibliographic Notes/Notes techniques et bibliographiques

The Institute has attempted to obtain the best original copy available for filming. Features of this copy which may be bibliographically unique, which may alter any of the images in the reproduction, or which may significantly change the usual method of filming, are checked below.

L'Institut a microfilmé le meilleur exemplaire qu'il lui a été possible de se procurer. Les détails de cet exemplaire qui sont peut-être uniques du point de vue bibliographique, qui peuvent modifier une image reproduite, ou qui peuvent exiger une modification dans la méthode normale de filmage sont indiqués ci-dessous.

- Coloured covers/
Couverture de couleur
- Covers damaged/
Couverture endommagée
- Covers restored and/or laminated/
Couverture restaurée et/ou pelliculée
- Cover title missing/
Le titre de couverture manque
- Coloured maps/
Cartes géographiques en couleur
- Coloured ink (i.e. other than blue or black)/
Encre de couleur (i.e. autre que bleue ou noire)
- Coloured plates and/or illustrations/
Planches et/ou illustrations en couleur
- Bound with other material/
Relié avec d'autres documents
- Tight binding may cause shadows or distortion along interior margin/
La reliure serrée peut causer de l'ombre ou de la distorsion le long de la marge intérieure
- Blank leaves added during restoration may appear within the text. Whenever possible, these have been omitted from filming/
Il se peut que certaines pages blanches ajoutées lors d'une restauration apparaissent dans le texte, mais, lorsque cela était possible, ces pages n'ont pas été filmées.
- Additional comments: / [Printed ephemera] 1 sheet (verso blank)
Commentaires supplémentaires:

- Coloured pages/
Pages de couleur
- Pages damaged/
Pages endommagées
- Pages restored and/or laminated/
Pages restaurées et/ou pelliculées
- Pages discoloured, stained or foxed/
Pages décolorées, tachetées ou piquées
- Pages detached/
Pages détachées
- Showthrough/
Transparence
- Quality of print varies/
Qualité inégale de l'impression
- Includes supplementary material/
Comprend du matériel supplémentaire
- Only edition available/
Seule édition disponible
- Pages wholly or partially obscured by errata slips, tissues, etc., have been refilmed to ensure the best possible image/
Les pages totalement ou partiellement obscurcies par un feuillet d'errata, une pelure, etc., ont été filmées à nouveau de façon à obtenir la meilleure image possible.

This item is filmed at the reduction ratio checked below/
Ce document est filmé au taux de réduction indiqué ci-dessous.

10X	14X	18X	22X	26X	30X
<input type="checkbox"/>	<input type="checkbox"/>	<input type="checkbox"/>	<input checked="" type="checkbox"/>	<input type="checkbox"/>	<input type="checkbox"/>
12X	16X	20X	24X	28X	32X

The copy filmed here has been reproduced thanks to the generosity of:

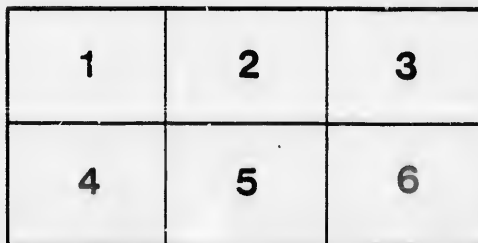
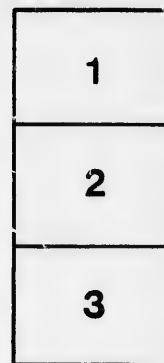
D. B. Weldon Library
University of Western Ontario
(Regional History Room)

The images appearing here are the best quality possible considering the condition and legibility of the original copy and in keeping with the filming contract specifications.

Original copies in printed paper covers are filmed beginning with the front cover and ending on the last page with a printed or illustrated impression, or the back cover when appropriate. All other original copies are filmed beginning on the first page with a printed or illustrated impression, and ending on the last page with a printed or illustrated impression.

The last recorded frame on each microfiche shall contain the symbol \rightarrow (meaning "CONTINUED"), or the symbol ∇ (meaning "END"), whichever applies.

Maps, plates, charts, etc., may be filmed at different reduction ratios. Those too large to be entirely included in one exposure are filmed beginning in the upper left hand corner, left to right and top to bottom, as many frames as required. The following diagrams illustrate the method:



L'exemplaire filmé fut reproduit grâce à la générosité de:

D. B. Weldon Library
University of Western Ontario
(Regional History Room)

Les images suivantes ont été reproduites avec le plus grand soin, compte tenu de la condition et de la netteté de l'exemplaire filmé, et en conformité avec les conditions du contrat de filmage.

Les exemplaires originaux dont la couverture en papier est imprimée sont filmés en commençant par le premier plat et en terminant soit par la dernière page qui comporte une empreinte d'impression ou d'illustration, soit par le second plat, selon le cas. Tous les autres exemplaires originaux sont filmés en commençant par la première page qui comporte une empreinte d'impression ou d'illustration et en terminant par la dernière page qui comporte une telle empreinte.

Un des symboles suivants apparaîtra sur la dernière image de chaque microfiche, selon le cas: le symbole \rightarrow signifie "A SUIVRE", le symbole ∇ signifie "FIN".

Les cartes, planches, tableaux, etc., peuvent être filmés à des taux de réduction différents. Lorsque le document est trop grand pour être reproduit en un seul cliché, il est filmé à partir de l'angle supérieur gauche, de gauche à droite, et de haut en bas, en prenant le nombre d'images nécessaire. Les diagrammes suivants illustrent la méthode.

.. OFFICE OF THE ..

John Watson Manufacturing Co.

(LIMITED.)

AYR, ONTARIO, CANADA.

We are making a very large number of Implements of superior merit and we do not intend to ruin our reputation by making cheap machines to catch the cheap market. We claim that we have the simplest and most durable machines and only ask intending purchasers to examine our machines before buying.

We have decided to discontinue the long-winded credit system on implements and in future these goods will be sold at greatly reduced prices for cash, but if credit is wanted, we will grant a reasonable time, with interest, to reliable customers.

ALL PREVIOUS LISTS ARE HEREBY CANCELLED.

Yours respectfully.

JOHN WATSON M'FG CO., LIMITED.

Good Reliable Agents Wanted.

Price List No. 53.

Free on Board Cars at Ayr Station.

	LIST PRICE.
Watson's Lion Reaper.....	\$ 80 00
“ Humming Bird Mower.....	47 00
“ Daisy Self Dump Rake.....	24 00
Excelsior Ensilage and Freed Cutter, no carriers....	44 00
“ Ensilage Cutter, largest size, cased in, with short carrier in Cutter, No. 1.....	56 00
“ Ensilage Cutter, No. 2, largest size, cased in, with short reversible carrier in Cutter.....	56 00
Universal Carrier Jack, including driving chain.....	12 00
Chain Carriers, complete, (if for use with jack,) per foot.....	1 50
“ “ “ if driven by belt (without jack,) per foot.....	1 66
Watson's Giant Cylinder Ensilage Cutter.....	78 00
Speed Gear for Excelsior, for increasing the speed.....	5 00
Extra Gear for Excelsior, for cutting bedding.....	2 00
Watson's Pneumatic Feed Elevator, no piping.....	60 00
Excelsior Jr. Feed Cutter, without pulley.....	24 00
“ “ with pulley.....	25 00
Canadian Hand Feed Cutter.....	16 00
Excelsior Double Action Gardiner Root Cutter, without pulley.....	30 00
“ “ “ with pulley.....	31 00
Watson's Root Pulper and Slicer, 6 knives.....	13 00
“ “ “ with Fly Wheel 27 in. dia.....	16 00
Triple Action Root Cutter, Pulper and Slicer.....	45 00
Turnip Seed Sower.....	14 00
Watson's Victor Grain Grinder.....	25 00
Scientific Grinding Mill, Style L, No. 1, steam power.....	70 00
Roller Grain Crusher.....	45 00
“ “ with gear attachment.....	50 00
Farmer's 2 and 4 Horse power.....	60 00
Iron Frame Bevel Jack.....	15 00
Farmer's Balanced Frame Circular Saw.....	45 00
Combination Truck, with Barrel and Box, 36 inch wheels.....	15 00
“ “ Barrel only.....	11 00
“ “ Box only.....	12 00
“ “ no Barrel or Box.....	8 00
Extra Barrel Irons, per set.....	75
Watson's Lever Hand Feed Cutter.....	3 50
“ Bag Barrow.....	2 50
“ Iron, Hand Corn Sheller.....	2 50
“ Little Hero.....	12 00
“ All Steel Diamond Harrow, 3 sections.....	12 50
“ “ “ 4 “.....	17 00
“ Field Cultivator.....	28 00

