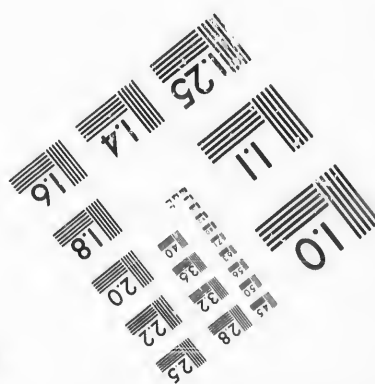
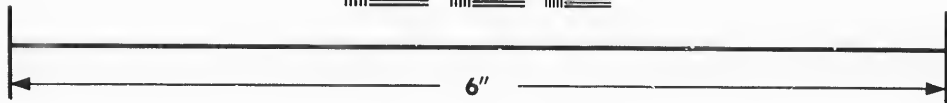
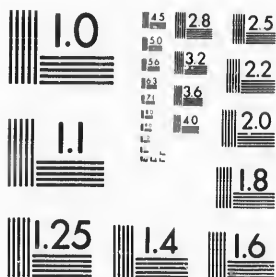


**IMAGE EVALUATION  
TEST TARGET (MT-3)**



**Photographic  
Sciences  
Corporation**

23 WEST MAIN STREET  
WEBSTER, N.Y. 14580  
(716) 872-4503

**CIHM/ICMH  
Microfiche  
Series.**

**CIHM/ICMH  
Collection de  
microfiches.**



Canadian Institute for Historical Microreproductions / Institut canadien de microreproductions historiques

**© 1987**

Technical and Bibliographic Notes/Notes techniques et bibliographiques

The Institute has attempted to obtain the best original copy available for filming. Features of this copy which may be bibliographically unique, which may alter any of the images in the reproduction, or which may significantly change the usual method of filming, are checked below.

L'Institut a microfilmé le meilleur exemplaire qu'il lui a été possible de se procurer. Les détails de cet exemplaire qui sont peut-être uniques du point de vue bibliographique, qui peuvent modifier une image reproduite, ou qui peuvent exiger une modification dans la méthode normale de filmage sont indiqués ci-dessous.

- Coloured covers/  
Couverture de couleur
- Covers damaged/  
Couverture endommagée
- Covers restored and/or laminated/  
Couverture restaurée et/ou pelliculée
- Cover title missing/  
Le titre de couverture manque
- Coloured maps/  
Cartes géographiques en couleur
- Coloured ink (i.e. other than blue or black)/  
Encre de couleur (i.e. autre que bleue ou noire)
- Coloured plates and/or illustrations/  
Planches et/ou illustrations en couleur
- Bound with other material/  
Relié avec d'autres documents
- Tight binding may cause shadows or distortion along interior margin/  
La reliure serrée peut causer de l'ombre ou de la distorsion le long de la marge intérieure
- Blank leaves added during restoration may appear within the text. Whenever possible, these have been omitted from filming/  
Il se peut que certaines pages blanches ajoutées lors d'une restauration apparaissent dans le texte, mais, lorsque cela était possible, ces pages n'ont pas été filmées.
- Additional comments:/  
Commentaires supplémentaires:

[Printed ephemera] 1 sheet (verso blank)

- Coloured pages/  
Pages de couleur
- Pages damaged/  
Pages endommagées
- Pages restored and/or laminated/  
Pages restaurées et/ou pelliculées
- Pages discoloured, stained or foxed/  
Pages décolorées, tachetées ou piquées
- Pages detached/  
Pages détachées
- Showthrough/  
Transparence
- Quality of print varies/  
Qualité inégale de l'impression
- Includes supplementary material/  
Comprend du matériel supplémentaire
- Only edition available/  
Seule édition disponible
- Pages wholly or partially obscured by errata slips, tissues etc., have been refilmed to ensure the best possible image/  
Les pages totalement ou partiellement obscurcies par un feuillet d'errata, une pelure, etc., ont été filmées à nouveau de façon à obtenir la meilleure image possible.

This item is filmed at the reduction ratio checked below/  
Ce document est filmé au taux de réduction indiqué ci-dessous.

10X	14X	18X	22X	26X	30X
<input type="checkbox"/>	<input type="checkbox"/>	<input type="checkbox"/>	<input type="checkbox"/>	<input checked="" type="checkbox"/>	<input type="checkbox"/>
12X	16X	20X	24X	28X	32X

The copy filmed here has been reproduced thanks to the generosity of:

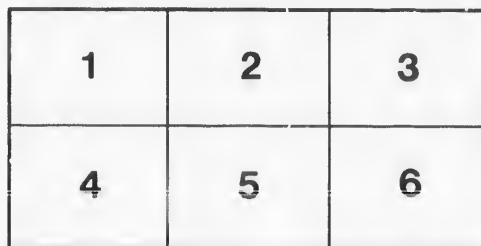
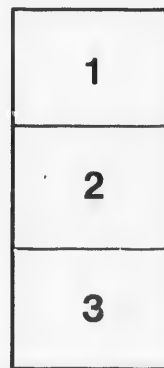
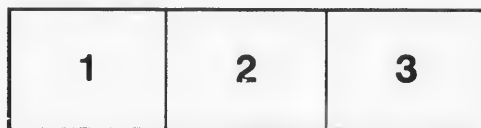
Harriet Irving Library  
University of New Brunswick

The images appearing here are the best quality possible considering the condition and legibility of the original copy and in keeping with the filming contract specifications.

Original copies in printed paper covers are filmed beginning with the front cover and ending on the last page with a printed or illustrated impression, or the back cover when appropriate. All other original copies are filmed beginning on the first page with a printed or illustrated impression, and ending on the last page with a printed or illustrated impression.

The last recorded frame on each microfiche shall contain the symbol  $\rightarrow$  (meaning "CONTINUED"), or the symbol  $\nabla$  (meaning "END"), whichever applies.

Maps, plates, charts, etc., may be filmed at different reduction ratios. Those too large to be entirely included in one exposure are filmed beginning in the upper left hand corner, left to right and top to bottom, as many frames as required. The following diagrams illustrate the method:



L'exemplaire filmé fut reproduit grâce à la générosité de:

Harriet Irving Library  
University of New Brunswick

Les images suivantes ont été reproduites avec le plus grand soin, compte tenu de la condition et de la netteté de l'exemplaire filmé, et en conformité avec les conditions du contrat de filmage.

Les exemplaires originaux dont la couverture en papier est imprimée sont filmés en commençant par le premier plat et en terminant soit par la dernière page qui comporte une empreinte d'impression ou d'illustration, soit par le second plat, selon le cas. Tous les autres exemplaires originaux sont filmés en commençant par la première page qui comporte une empreinte d'impression ou d'illustration et en terminant par la dernière page qui comporte une telle empreinte.

Un des symboles suivants apparaîtra sur la dernière image de chaque microfiche, selon le cas: le symbole  $\rightarrow$  signifie "A SUIVRE", le symbole  $\nabla$  signifie "FIN".

Les cartes, planches, tableaux, etc., peuvent être filmés à des taux de réduction différents. Lorsque le document est trop grand pour être reproduit en un seul cliché, il est filmé à partir de l'angle supérieur gauche, de gauche à droite, et de haut en bas, en prenant le nombre d'images nécessaire. Les diagrammes suivants illustrent la méthode.

# CLAIRE SCOTT & COMPANY

— TUESDAY EVENING, MAY 3. —

## BARKER HOUSE,

FREDERICTON, N. B.

F. B. COLEMAN, . . . Proprietor and Manager.  
(VICE U. S. CONSUL.)

### THE LEADING HOTEL IN THE CITY.

Amirably located, commanding a beautiful view  
of the St. John River.

SPECIAL RATES for first-class DRAMATIC CO.

— ALSO PROPRIETOR OF —

## KILLARNEY HOUSE.

SITUATED 3 MILES FROM THE CITY, ON LAKE  
KILLARNEY.

A delightful Summer Resort for Tourists. Good  
Fishing and Boating. The above House will be  
ready for guests about June 1st.

## S. M. BERRY.

(Successor to Babbitt Bros.)

### Candy Confectionery.

FRESH EVERY DAY.

COY'S BLOCK, . . . . . QUEEN STREET.

FREDERICTON, N. B.

## W. T. H. FENETY.

— DEALER IN —

### BOOKS, STATIONERY, WALL PAPER AND FANCY GOODS.

OPPOSITE OFFICERS' BARRACKS,

QUEEN STREET, . . . . . FREDERICTON, N. B.

## VERXA & VERXA.

— DEALERS IN —

### Staple & Fancy Groceries,

— ALSO —

A FINE LINE OF FRUIT ALWAYS ON STOCK.

### Confectionery & Specialty.

168 QUEEN ST., FREDERICTON, N. B.

W. T. H. FENETY, . . . . . LESSEE.

## MISS CLAIRE SCOTT

SUPPORTED BY HER OWN COMPANY.

— TUESDAY, MAY 3, 1887. —

# "LEAH" THE FORSAKEN.

## PROGRAMME:

JEWES.

LEAH, a Jewish Maiden, . . . . . MISS CLAIRE SCOTT  
NATHAN, the Schoolmaster, an Apostate, . . . . . FRANK O. IRESON  
ABRAHAM, a Blind Man, . . . . . J. C. EDSON  
SARAH, . . . . . Miss KATIE SCOTT

CHRISTIANS.

RUDOLPH, . . . . . S. K. COBURN  
FATHER LORENZA, a Magistrate, . . . . . BRUCE HAYES  
LUDWIG, a Barber, . . . . . GEO. NEVILLE  
FATHER HERMAN, a Priest, . . . . . J. C. EDSON  
JACOB, a Country Youth, . . . . . W. C. WESTON  
MADALENA, . . . . . Miss AGNES CODY  
DAME GERTRUDE GROSCHE, . . . . . Miss L. GARNET STENSON  
ROSELLE, . . . . . Miss KATIE SCOTT  
LITTLE LEAH, . . . . . Little LULU

Peasants, Villagers, etc.

## JAS. G. McNALLY.

### HOUSE FURNISHER,

— 152 & 151 QUEEN STREET. —

### SEE OUR PRICES.

Furniture of all kinds; Carpets of all kinds; Floor Oil Cloths;  
Window Curtains; Mattresses and Bedding, Towels, Table Linen,  
Crockery and Glassware, Lamps, Table Cutlery and Silverware.

## J. WALKER.

### PRACTICAL TAILOR, CUSTOM WORK A SPECIALTY.

Next door to Dougherty's Boot and Shoe Store,

FREDERICTON, N. B.

## DR. H. D. CURRIE, SURGEON DENTIST.

### Orthodontia a Specialty.

164 QUEEN STREET, FREDERICTON.

## JAS. D. FOWLER, Watchmaker, Jeweler.

— AND —

## OPTICIAN.

OPPOSITE POST OFFICE.

QUEEN STREET, . . . . . FREDERICTON, N.

## JOHN HARVEY'S Photograph Studio,

164 QUEEN STREET, - FREDERICTON, N. B.

All work done by the instantaneous process.

### Next to Peoples' Bank.

PICTURES COPIED AND ENLARGED.

## GREAT SCOTT!

I JUST arrived this morning from the woods and  
got lots of gum which I'm going to sell and gain  
ter buy a ticket to see Claire Scott play in that big  
soundin' named play of hers to night at the City  
Hall, and after that I'm just goin' over to

G. REX LEEK'S YORK ST. RESTAURANT  
and get some of 'em nice Oysters, Beans and Apple  
Pies of hisn. They tell me Rex has been makin'  
some improvements in his Saloon.

I would like to see some of the crowd go to the  
York Street Restaurant after the show is over and  
get what they like, as Rex has everything nice.

"P.S.—I want Rex to go steam drivin' with me  
this Spring, but he says he can't leave the saloon  
as he is to busy attendin' to the wants of his  
customers.

G. REX LEEK,  
18 York Street, F'ron, N. B.

