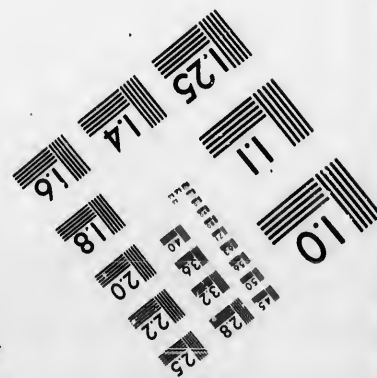
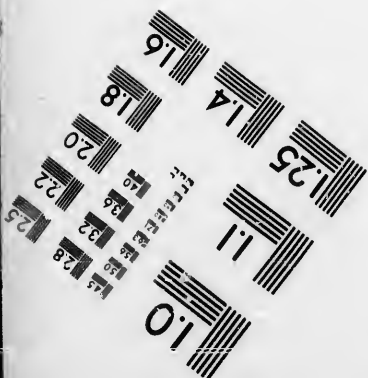
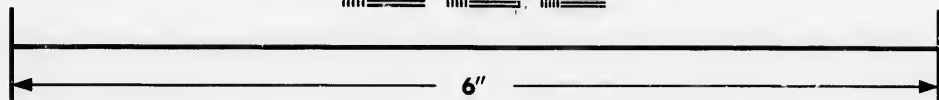
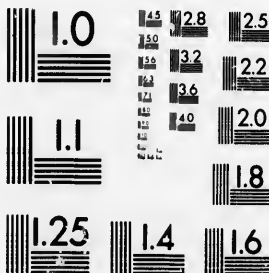


**IMAGE EVALUATION  
TEST TARGET (MT-3)**



**Photographic  
Sciences  
Corporation**

23 WEST MAIN STREET  
WEBSTER, N.Y. 14580  
(716) 873-4503

14.5 28  
16 32  
18 36  
20 40  
22 45  
25

**CIHM/ICMH  
Microfiche  
Series.**

**CIHM/ICMH  
Collection de  
microfiches.**



Canadian Institute for Historical Microreproductions / Institut canadien de microreproductions historiques

10  
51

**© 1986**

The Institute has attempted to obtain the best original copy available for filming. Features of this copy which may be bibliographically unique, which may alter any of the images in the reproduction, or which may significantly change the usual method of filming, are checked below.

L'Institut a essayé d'obtenir le meilleur exemplaire original disponible pour le filmage. Les caractéristiques de cet exemplaire qui peuvent être bibliographiquement uniques, qui peuvent modifier n'importe quel point de l'image ou qui peuvent modifier de façon importante la méthode habituelle de filmage, sont indiquées ci-dessous.

- Coloured covers/  
Couverture de couleur
- Covers damaged/  
Couverture endommagée
- Covers restored and/or laminated/  
Couverture restaurée et/ou pelliculée
- Cover title missing/  
Le titre de couverture manque
- Coloured maps/  
Cartes géographiques en couleur
- Coloured ink (i.e. other than blue or black)/  
Encre de couleur (i.e. autre que bleue ou noire)
- Coloured plates and/or illustrations/  
Planches et/ou illustrations en couleur
- Bound with other material/  
Relié avec d'autres documents
- Tight binding may cause shadows or distortion  
along interior margin/  
La reliure serrée peut causer de l'ombre ou de la  
distorsion le long de la marge intérieure
- Blank leaves added during restoration may  
appear within the text. Whenever possible, these  
have been omitted from filming/  
Il se peut que certaines pages blanches ajoutées  
lors d'une restauration apparaissent dans le texte,  
mais, lorsque cela était possible, ces pages n'ont  
pas été filmées.
- Additional comments:/  
Commentaires supplémentaires:

- C
- P
- P
- P
- P
- P
- P
- S
- T
- Q
- Q
- I
- C
- O
- S
- P
- s
- e
- L
- o
- e
- o

[Printed Ephemera] [8] p.

This item is filmed at the reduction ratio checked below/  
Ce document est filmé au taux de réduction indiqué ci-dessous.

10X	14X	18X	22X
<input type="checkbox"/>	<input type="checkbox"/>	<input checked="" type="checkbox"/>	<input type="checkbox"/>
12X	16X	20X	24X

Graphic Notes/Notes techniques et bibliographiques

best  
of this  
ue.

change  
below.

L'Institut a microfilmé le meilleur exemplaire qu'il lui a été possible de se procurer. Les détails de cet exemplaire qui sont peut-être uniques du point de vue bibliographique, qui peuvent modifier une image reproduite, ou qui peuvent exiger une modification dans la méthode normale de filmage sont indiqués ci-dessous.

Coloured pages/  
Pages de couleur

Pages damaged/  
Pages endommagées

Pages restored and/or laminated/  
Pages restaurées et/ou pelliculées

Pages discoloured, stained or foxed/  
Pages décolorées, tachetées ou piquées

Pages detached/  
Pages détachées

black)/  
ou noire)

Showthrough/  
Transparence

Quality of print varies/  
Qualité inégale de l'impression

Includes supplementary material/  
Comprend du matériel supplémentaire

distortion

Only edition available/  
Seule édition disponible

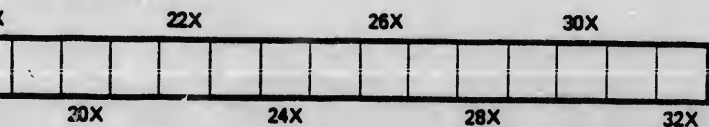
ore ou de la  
ure

Pages wholly or partially obscured by errata slips, tissues, etc., have been refilmed to ensure the best possible image/  
Les pages totalement ou partiellement obscurcies par un feuillet d'errata, une pelure, etc., ont été filmées à nouveau de façon à obtenir la meilleure image possible.

n may  
ssible, these

es ajoutées  
ans le texte,  
pages n'ont

checked below/  
n indiqué ci-dessous.



The copy filmed here has been reproduced thanks to the generosity of:

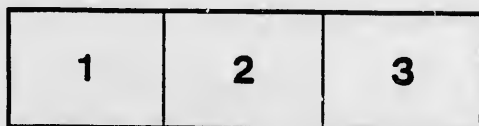
Archives of Ontario  
Toronto

The images appearing here are the best quality possible considering the condition and legibility of the original copy and in keeping with the filming contract specifications.

Original copies in printed paper covers are filmed beginning with the front cover and ending on the last page with a printed or illustrated impression, or the back cover when appropriate. All other original copies are filmed beginning on the first page with a printed or illustrated impression, and ending on the last page with a printed or illustrated impression.

The last recorded frame on each microfiche shell contains the symbol  $\rightarrow$  (meaning "CONTINUED"), or the symbol  $\nabla$  (meaning "END"), whichever applies.

Maps, plates, charts, etc., may be filmed at different reduction ratios. Those too large to be entirely included in one exposure are filmed beginning in the upper left hand corner, left to right and top to bottom, as many frames as required. The following diagrams illustrate the method:



L'ex  
géné

Les  
plus  
de l  
con  
film

Les  
pap  
par  
der  
d'in  
plat  
orig  
pre  
d'in  
la d  
emp

Un  
der  
cas  
sym

Les  
film  
Lors  
repr  
de l  
et d  
d'im  
illus

anced thanks

L'exemplaire filmé fut reproduit grâce à la générosité de:

Archives of Ontario  
Toronto

t quality  
legibility  
h the

Les images suivantes ont été reproduites avec le plus grand soin, compte tenu de la condition et de la netteté de l'exemplaire filmé, et en conformité avec les conditions du contrat de filmage.

are filmed  
ling on  
ed impres-  
sions. All  
ing on the  
mpres-  
sions printed

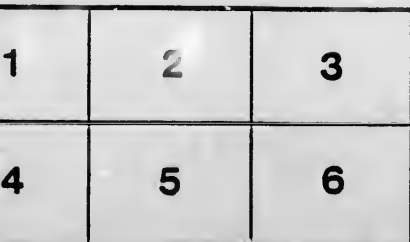
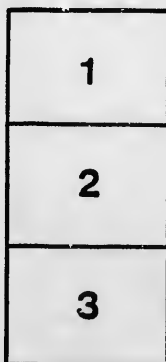
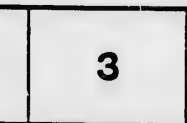
Les exemplaires originaux dont la couverture en papier est imprimée sont filmés en commençant par le premier plat et en terminant soit par la dernière page qui comporte une empreinte d'impression ou d'illustration, soit par le second plat, selon le cas. Tous les autres exemplaires originaux sont filmés en commençant par la première page qui comporte une empreinte d'impression ou d'illustration et en terminant par la dernière page qui comporte une telle empreinte.

fiche  
"CON-  
END").

Un des symboles suivants apparaîtra sur la dernière image de chaque microfiche, selon le cas: le symbole  $\rightarrow$  signifie "A SUIVRE", le symbole  $\nabla$  signifie "FIN".

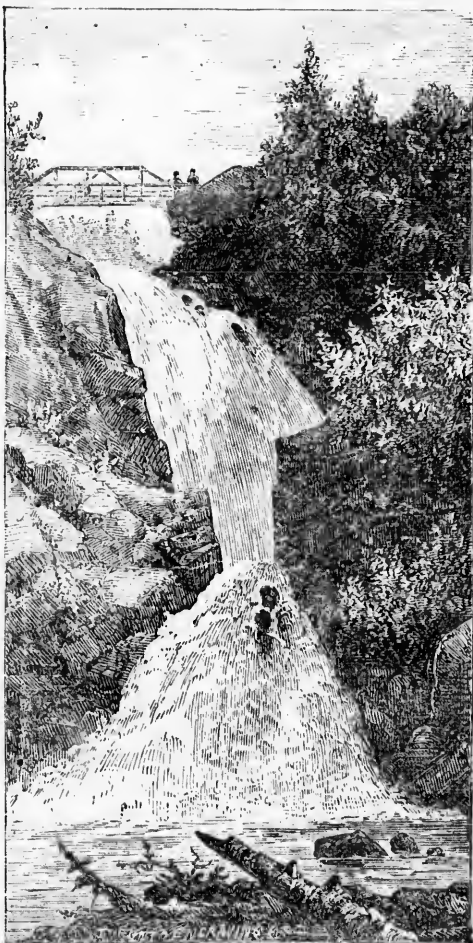
nd at  
ge to be  
med  
, left to  
es as  
ate the

Les cartes, planches, tableaux, etc., peuvent être filmés à des taux de réduction différents. Lorsque le document est trop grand pour être reproduit en un seul cliché, il est filmé à partir de l'angle supérieur gauche, de gauche à droite, et de haut en bas, en prenant le nombre d'images nécessaire. Les diagrammes suivants illustrent la méthode.



# NORTHERN RAILWAY OF CANADA

THE DIRECT ROUTE TO THE



HIGHLANDS & LAKE DISTRICT.

SOUTH FALLS—MUSKOKA RIVER.

SEE INFORMATION INSIDE.

ALFRED TELFER,  
Ticket Agent,  
Toronto.

BARLOW CUMBERLAND,  
Gen'l Fr'gt & Pass'gr Agent,  
Toronto

THE  
**GRANDEST SCENERY**  
 IS ON THE  
**NORTH SHORE OF LAKE**

**Lake Superior! The Largest**



**THUNDER CAPE.—LAKE SUP**

Tourists will find the NORTHERN RAILWAY and COLLINGWOOD LINE OF STEAMERS  
 Summer Trips on the Continent.

TORONTO—COUCHICHING—LAKES OF MUSKOKA—COLLINGWOOD—GEORGIAN BAY—  
 SAULT STE. MARIE—NORTH SHORE OF LAKE SUPERIOR—THUNDER BAY—DULUTH

**ROUND TRIP TICKETS.** Toronto to Lakes of Muskoka District  
 " to Collingwood direct and Duluth  
 " " " " and Toronto

**THE MAGNIFICENT UPPER CABIN STEAMERS CHICORA,**

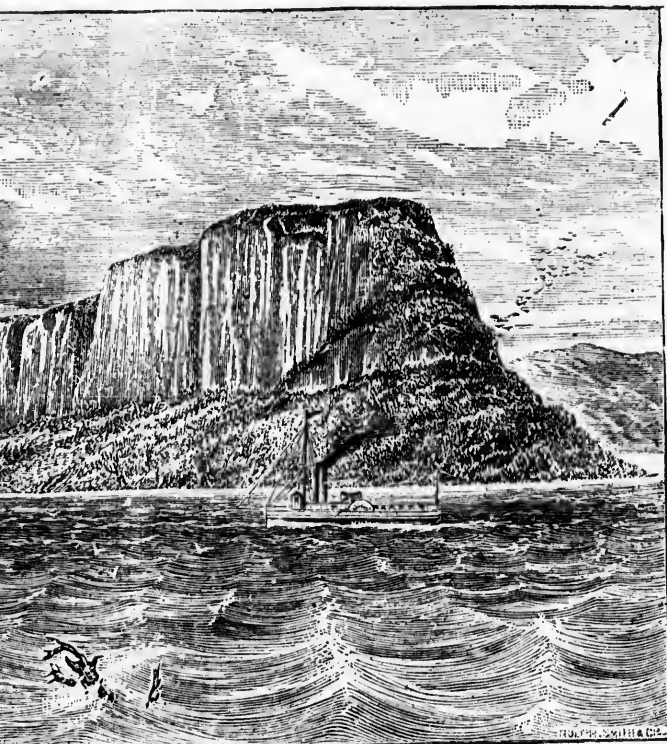
Leave Collingwood on Mondays and Thursdays on arrival of Steamboat Express  
 passing through the Inside Picturesque Route of the Georgian Bay and North  
 Lake Huron, and passing in daylight the LaCloche Mountains and through Island  
 of the St. Lawrence. The whole Round Trip returning to Toronto occupies ten  
 can lay off at any point of interest and continue their trip by other Steamers

**DRAWING ROOM CABS. STEEL TRACK. PRIVATE PARLOR**



# THE SCENERY IN AMERICA

IS ON THE  
SHORES OF LAKE SUPERIOR



Fresh-Water Sea in the World.

VIEW OF CAPE—LAKE SUPERIOR.

COLLINGWOOD LINE OF STEAMERS one of the Finest and Cheapest All-Round

—COLLINGWOOD—GEORGIAN BAY—GREAT NORTH MANITOULIN CHANNEL—  
—LAKE SUPERIOR—THUNDER BAY—DULUTH—and RETURN.

Lakes of Muskoka District and Duluth,	\$30,	and Return,	\$45.
Collingwood direct and Duluth,	\$25,	"	\$38.
" " and Thunder Bay,	\$20,	"	\$33.

STEAMERS CHICORA, CUMBERLAND and FRANCES SMITH

Arrival of Steamboat Express Trains, leaving Toronto at 12.45. The only Line  
to the Georgian Bay and North Manitoulin Channel, avoiding the open waters of  
the Mountains and through Island Scenery unsurpassed by the Thousand Islands  
which connecting to Toronto occupies ten ten days; but Tourists, holding Excursion Tickets  
for their trip by other Steamers of the line.

DECK. PRIVATE PARLORS FOR FAMILIES ON STEAMERS.

HO! FOR LAKE  
**COUCHICHING**

AN INTERESTING,  
ECONOMICAL  
**Lakeside Summer Resort**

The most charming Island Scenery of  
all the Lakes.


**3 EXPRESS TRAINS!**

DAILY FROM TORONTO

**IN FOUR HOURS.**

Toronto to Couchiching, - \$2.70  
and Return - 3.50

 Steamer "CARRIELLA," twice a day  
round Lake Couchiching.

 Steamer "LADY OF THE LAKES," once  
daily round Lake Simcoe.

 Steamer "PIONEER" once daily round  
Sparrow Lake.

**THE COOLEST**

-AND-

**Most Elevated part of Canada**

{ 800 FEET ABOVE LAKE ONTARIO.  
415 FEET ABOVE LAKE HURON.  
390 FEET ABOVE LAKE SUPERIOR. }

# NORTHERN RAILWAY

## QUICK ROUTE TO LAKE



THE MOST DELIGHTFUL SUMMER WATER

**COUCHICHING**

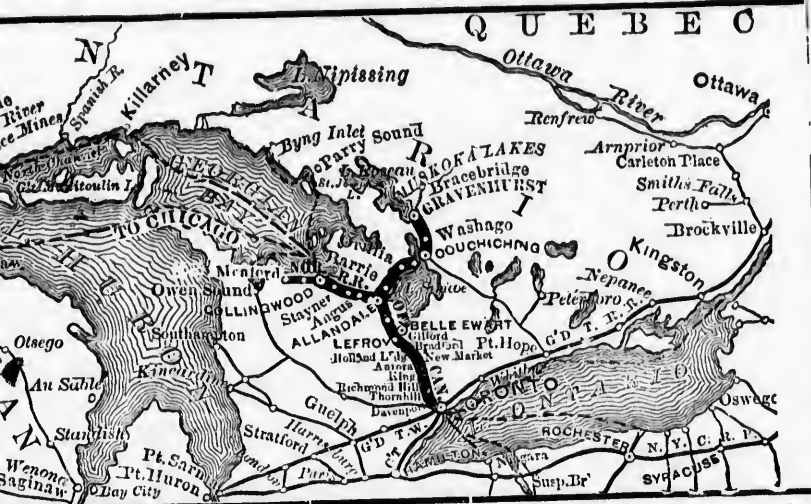


LAKE COUCHICHING HO

**TOURISTS FROM PHIL.**

New York, or other Eastern or Southern points reach Toronto and Couchiching by the New York Central, via Lewiston and Steamer "City of Toronto,"—by the Great Western or by the Canada Southern Railway, via Niagara and

# RAILWAY OF CANADA. TO LAKE SUPERIOR.



**SUMMER WATERING PLACE IN CANADA IS  
COUCHICHIING.**



**THE COUCHICHIING HOTEL.  
FROM PHILADELPHIA,**

reach Toronto and Couchiching via Buffalo or Suspension Bridge by New York and Toronto,"—by the Great Western Railway, via Hamilton, "all Rail,"—by the Erie Railway, via Niagara and Steamer "Southern Belle."

THE LAKES  
OF  
**MUSKOKA!**

TWO  
EXPRESS TRAINS DAILY.  
FROM

**TORONTO**

TO  
GRAVENHURST  
IN  
FIVE HOURS,  
Couchiching to Gravenhurst in 1 hour.

STEAMERS,  
Nipissing,  
Wenonah,  
Wabamik,  
ON LAKES

**MUSKOKA, JOSEPH, ROSSEAU,  
MARY, FAIRY, GULL, VERNON.**

A Woodland Region abounding in Lakes and Streams, affording every variety of Fishing and Game. Black Bass, Rock Bass, Pickerel, Maskinonge, Brook and Salmon Trout.

Sportsmen can obtain on the spot Guides, Boats and Canoes to all points. Visitors at Couchiching are within easy distance for making delightful excursions.

Excellent Summer Hotels at Bracebridge (Falls of Muskoka), Port Carling, Rosseau, Port Cockburn.

---

Toronto to Bracebridge and return,	\$6 00
“ Rosseau or Joseph and return	7 00
“ All Round the Lakes and return	8 00

**GOOD FOR TWO MONTHS.**

**LAKE SUPERIOR**

VIA THE

**NORTHERN RAILWAY**

OF

**CANADA,**

AND

**Collingwood Line**

**STEAMERS.**

THE

**EXPRESS**

**INSIDE**

**TOURIST**

**ROUTE.**

**Only Upper Cabin**

**SIDE-WHEEL LINE**

FOR

**THUNDER BAY, NEPIGON,**

**DULUTH.**

**SEE PARTICULARS INSIDE.**



