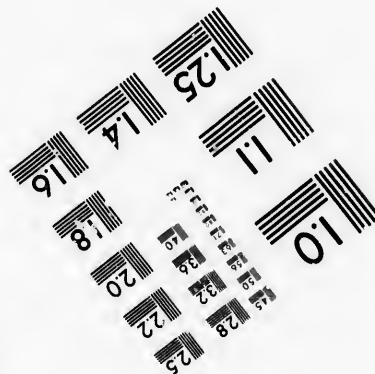
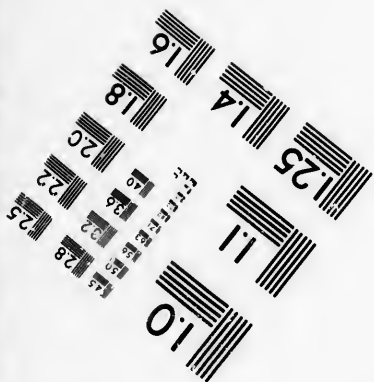
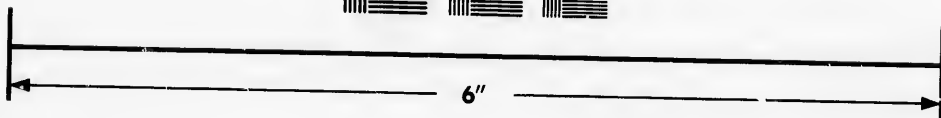
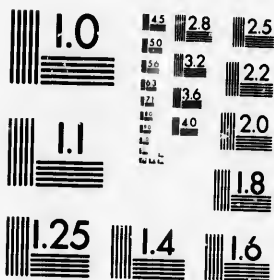


**IMAGE EVALUATION
TEST TARGET (MT-3)**



**Photographic
Sciences
Corporation**

23 WEST MAIN STREET
WEBSTER, N.Y. 14580
(716) 872-4503



**CIHM/ICMH
Microfiche
Series.**

**CIHM/ICMH
Collection de
microfiches.**



Canadian Institute for Historical Microreproductions / Institut canadien de microreproductions historiques



© 1986

Technical and Bibliographic Notes/Notes techniques et bibliographiques

The Institute has attempted to obtain the best original copy available for filming. Features of this copy which may be bibliographically unique, which may alter any of the images in the reproduction, or which may significantly change the usual method of filming, are checked below.

L'Institut a microfilmé le meilleur exemplaire qu'il lui a été possible de se procurer. Les détails de cet exemplaire qui sont peut-être uniques du point de vue bibliographique, qui peuvent modifier une image reproduite, ou qui peuvent exiger une modification dans la méthode normale de filmage sont indiqués ci-dessous.

- | | |
|--|--|
| <input type="checkbox"/> Coloured covers/
Couverture de couleur | <input type="checkbox"/> Coloured pages/
Pages de couleur |
| <input type="checkbox"/> Covers damaged/
Couverture endommagée | <input type="checkbox"/> Pages damaged/
Pages endommagées |
| <input type="checkbox"/> Covers restored and/or laminated/
Couverture restaurée et/ou pelliculée | <input type="checkbox"/> Pages restored and/or laminated/
Pages restaurées et/ou pelliculées |
| <input type="checkbox"/> Cover title missing/
Le titre de couverture manque | <input checked="" type="checkbox"/> Pages discoloured, stained or foxed/
Pages décolorées, tachetées ou piquées |
| <input type="checkbox"/> Coloured maps/
Cartes géographiques en couleur | <input type="checkbox"/> Pages detached/
Pages détachées |
| <input type="checkbox"/> Coloured ink (i.e. other than blue or black)/
Encre de couleur (i.e. autre que bleue ou noire) | <input checked="" type="checkbox"/> Showthrough/
Transparence |
| <input type="checkbox"/> Coloured plates and/or illustrations/
Planches et/ou illustrations en couleur | <input type="checkbox"/> Quality of print varies/
Qualité inégale de l'impression |
| <input type="checkbox"/> Bound with other material/
Relié avec d'autres documents | <input type="checkbox"/> Includes supplementary material/
Comprend du matériel supplémentaire |
| <input type="checkbox"/> Tight binding may cause shadows or distortion
along interior margin/
La reliure serrée peut causer de l'ombre ou de la
distorsion le long de la marge intérieure | <input type="checkbox"/> Only edition available/
Seule édition disponible |
| <input type="checkbox"/> Blank leaves added during restoration may
appear within the text. Whenever possible, these
have been omitted from filming/
Il se peut que certaines pages blanches ajoutées
lors d'une restauration apparaissent dans le texte,
mais, lorsque cela était possible, ces pages n'ont
pas été filmées. | <input type="checkbox"/> Pages wholly or partially obscured by errata
slips, tissues, etc., have been refilmed to
ensure the best possible image/
Les pages totalement ou partiellement
obscurcies par un feuillet d'errata, une pelure,
etc., ont été filmées à nouveau de façon à
obtenir la meilleure image possible. |
| <input checked="" type="checkbox"/> Additional comments: / [Printed ephemera] 1 sheet (verso blank)
Commentaires supplémentaires: | |

This item is filmed at the reduction ratio checked below/
Ce document est filmé au taux de réduction indiqué ci-dessous.

10X	12X	14X	16X	18X	20X	22X	24X	26X	28X	30X	32X
								✓			

The copy filmed here has been reproduced thanks to the generosity of:

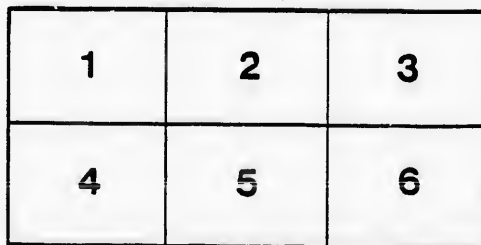
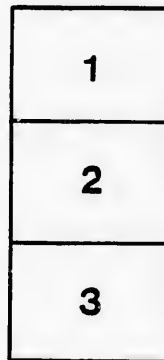
D. B. Weldon Library
University of Western Ontario
(Regional History Room)

The images appearing here are the best quality possible considering the condition and legibility of the original copy and in keeping with the filming contract specifications.

Original copies in printed paper covers are filmed beginning with the front cover and ending on the last page with a printed or illustrated impression, or the back cover when appropriate. All other original copies are filmed beginning on the first page with a printed or illustrated impression, and ending on the last page with a printed or illustrated impression.

The last recorded frame on each microfiche shall contain the symbol \rightarrow (meaning "CONTINUED"), or the symbol ∇ (meaning "END"), whichever applies.

Maps, plates, charts, etc., may be filmed at different reduction ratios. Those too large to be entirely included in one exposure are filmed beginning in the upper left hand corner, left to right and top to bottom, as many frames as required. The following diagrams illustrate the method:



L'exemplaire filmé fut reproduit grâce à la générosité de:

D. B. Weldon Library
University of Western Ontario
(Regional History Room)

Les images suivantes ont été reproduites avec le plus grand soin, compte tenu de la condition et de la netteté de l'exemplaire filmé, et en conformité avec les conditions du contrat de filmage.

Les exemplaires originaux dont la couverture en papier est imprimée sont filmés en commençant par le premier plat et en terminant soit par la dernière page qui comporte une empreinte d'impression ou d'illustration, soit par le second plat, selon le cas. Tous les autres exemplaires originaux sont filmés en commençant par la première page qui comporte une empreinte d'impression ou d'illustration et en terminant par la dernière page qui comporte une telle empreinte.

Un des symboles suivants apparaîtra sur la dernière image de chaque microfiche, selon le cas: le symbole \rightarrow signifie "A SUIVRE", le symbole ∇ signifie "FIN".

Les cartes, planches, tableaux, etc., peuvent être filmés à des taux de réduction différents. Lorsque le document est trop grand pour être reproduit en un seul cliché, il est filmé à partir de l'angle supérieur gauche, de gauche à droite, et de haut en bas, en prenant le nombre d'images nécessaire. Les diagrammes suivants illustrent la méthode.

re
détails
es du
ro modifier
r une
ilimage

es

errata
to

pelure,
n à



32X

DOMINION GRANGE.

SECRETARY'S OFFICE,
TORONTO, Nov. 25, 1881.

PATRONS.—The busy summer time is over, the harvests are gathered and safely housed; crops have been pretty generally good, and we have reason for much thankfulness. With the approach of winter we can see before us some leisure moments, some time for relaxation from the hard and patient labor of the past season. Blessed with the abundance of earth's products, the result of honest toil applied to the resources of nature, placed before us by a kind Providence, we are now in a position to turn our attention to the cultivation of our mental faculties, to the advancement of our social and educational condition, and which will also be a medium by which to add to our material interests. Many Granges, during the busy season, have not been meeting—now is the time when you should again meet regularly. There are also Granges that have ceased meeting altogether, the members becoming careless, and the good work, nobly begun, abandoned for lack of interest. In view of the necessity of co-operation of united action among farmers now so apparent, we urge the propriety of reorganization. You have probably all the requirements at hand and need only some one to say *come on*, and many Granges now dormant may be resuscitated. The past history of the order shows its capabilities if earnestly handled—the principles are right and need only the putting of machinery into effect to work out great results. With unity in purpose, and harmony of feeling, shutting out all jealousies and selfish motives, letting fraternity of feeling rule, a great future is in store yet for the Grange. We are at that stage in our history when we need earnest determination, and a oneness of purpose among our members to sustain and perpetuate our organization. In all institutions of a character like ours, having great subjects in view—the bettering of the condition of the people, and especially those immediately connected with the organization—the worst enemies are those inside the gates, men who have only selfish motives in view, and who measure the organization by what advantage they can individually get out of it. We cannot expect to be entirely free from such as these, but let them be closely watched, and if possible keep ourselves free from this class. We have a grand object, that of benefitting our class, socially and materially, and to do this let us work together as one with a mutual purpose directed towards this end. Let the Subordinate Granges be live branches, working in harmony with the head, and the members, each and all, feeling that upon them rests a duty, that of giving individual assistance, putting their shoulders to the wheel and working manfully for the accomplishment of our objects.

It will not do to let the Grange grow weak or fail, society demands its support. Our interests, as farmers, demands an organization conducted in our behalf. Each Subordinate Grange should realize the fact, and when inclined to go down let the members bear in mind that your failure is not only a loss to yourselves but exerts a depressing influence upon others. We exhort you therefore to hold fast to your Grange, sustain and keep up its meetings, as in time you will feel well rewarded for your efforts.

LECTURE BUREAU.

At last meeting of Dominion Grange a report was adopted recommending that a certain amount of funds be expended, during the coming year, towards sending lecturers through the country to speak in the interests of the Order, and the several institutions which have been the outgrowth of the Grange, were asked to assist in the work. A joint committee made up from representatives of the different Boards: Dominion Grange, Wholesale Supply Company, Canadian Mutual Aid Association, and Dominion Grange Mutual Fire Insurance Company, met on the 17th of November and prepared a scheme which is set before you by circular accompanying this, and we trust advantage will be taken of the effort made to awaken new life and interest in this way.

PROVINCIAL GRANGES.

**Ontario Provincial Grange will meet in Toronto, on Wednesday, February 8, 1882.
Nova Scotia Provincial Grange, will meet in Truro, N.S., Tuesday, Dec. 13, next.
Dominion Grange will meet in Toronto the second Tuesday in February 1882.**

We have now two Provincial Granges established, one in Ontario and one in Nova Scotia; from these representatives will be sent to make up next meeting of Dominion Grange. Representatives to these Provincial Granges are sent from Electoral Districts as provided by constitution of Provincial Grange, article 1, section 1 to 4. Where delegates are not already elected steps should be immediately taken for election that all sections be represented at next meetings of Provincial Granges, that at these meetings there should be a full representation is desired in the interests of the Order.

ELECTION REPORT.

Following will be found blank election reports which secretaries will please fill out and sign immediately after the election takes place in their Grange, tear off the blank and send to secretary of Dominion Grange. It is important that this should be attended to promptly, as we want to print a revised list of officers for circulation among Granges, and for the use of parties dealing with us. It is through this medium business men reach the Granges by circular, and we also desire a complete revised list for use by Dominion and Provincial Granges, hence it is important to attend carefully to this. Yours Fraturnally,

By order of Executive Committee.

W. PEMBERTON PAGE,
Secretary Dominion Grange.

ELECTION REPORT OF..... GRANGE NO.
TO THE SECRETARY OF DOMINION GRANGE:

DEAR BROTHER,—You are hereby notified that on the..... day of.....
188 , this Grange elected for the ensuing year, the following officers, to wit:

Bro.....Master,P.O.

Bro.....Sec.P.O.

Time of holding Regular Meetings.....

.....Late Secretary.

.....188

[SEAL]

Secretaries will please fill out this blank, WRITING NAMES PLAINLY, that no mistakes may be made and forward immediately after election to W. PEMBERTON PAGE, Sec. Dom. Grange, 63 King, St East, Toronto.

