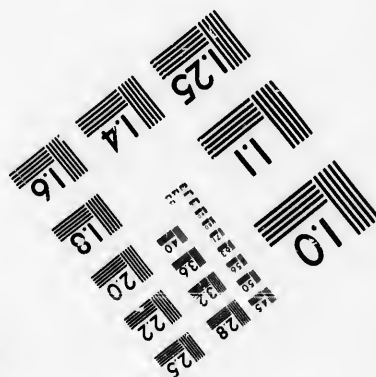
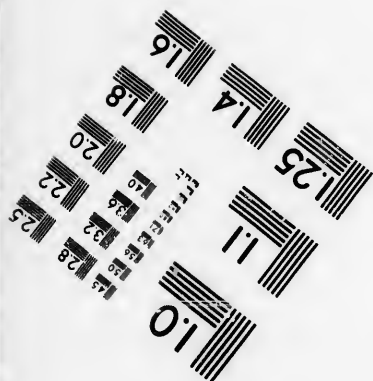
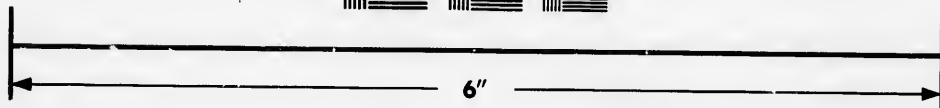
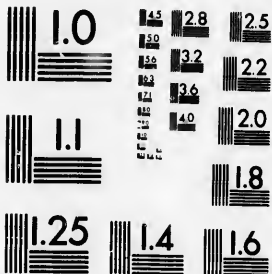


**IMAGE EVALUATION
TEST TARGET (MT-3)**



**Photographic
Sciences
Corporation**

23 WEST MAIN STREET
WEBSTER, N.Y. 14580
(716) 872-4503

1.8
2.0
2.2
2.5
2.8
3.2
3.6
4.0

**CIHM/ICMH
Microfiche
Series.**

**CIHM/ICMH
Collection de
microfiches.**



Canadian Institute for Historical Microreproductions / Institut canadien de microreproductions historiques

1.8
2.0
2.2
2.5
2.8
3.2
3.6
4.0

© 1986

Technical and Bibliographic Notes/Notes techniques et bibliographiques

The Institute has attempted to obtain the best original copy available for filming. Features of this copy which may be bibliographically unique, which may alter any of the images in the reproduction, or which may significantly change the usual method of filming, are checked below.

L'Institut a microfilmé le meilleur exemplaire qu'il lui a été possible de se procurer. Les détails de cet exemplaire qui sont peut-être uniques du point de vue bibliographique, qui peuvent modifier une image reproduite, ou qui peuvent exiger une modification dans la méthode normale de filmage sont indiqués ci-dessous.

- Coloured covers/
Couverture de couleur
- Covers damaged/
Couverture endommagée
- Covers restored and/or laminated/
Couverture restaurée et/ou pelliculée
- Cover title missing/
Le titre de couverture manque
- Coloured maps/
Cartes géographiques en couleur
- Coloured ink (i.e. other than blue or black)/
Encre de couleur (i.e. autre que bleue ou noire)
- Coloured plates and/or illustrations/
Planches et/ou illustrations en couleur
- Bound with other material/
Relié avec d'autres documents
- Tight binding may cause shadows or distortion along interior margin/
La reliure serrée peut causer de l'ombre ou de la distorsion le long de la marge intérieure
- Blank leaves added during restoration may appear within the text. Whenever possible, these have been omitted from filming/
Il se peut que certaines pages blanches ajoutées lors d'une restauration apparaissent dans le texte, mais, lorsque cela était possible, ces pages n'ont pas été filmées.

- Coloured pages/
Pages de couleur
- Pages damaged/
Pages endommagées
- Pages restored and/or laminated/
Pages restaurées et/ou pelliculées
- Pages discoloured, stained or foxed/
Pages décolorées, tachetées ou piquées
- Pages detached/
Pages détachées
- Showthrough/
Transparence
- Quality of print varies/
Qualité inégale de l'impression
- Includes supplementary material/
Comprend du matériel supplémentaire
- Only edition available/
Seule édition disponible
- Pages wholly or partially obscured by errata slips, tissues, etc., have been refilmed to ensure the best possible image/
Les pages totalement ou partiellement obscurcies par un feuillet d'errata, une pelure, etc., ont été filmées à nouveau de façon à obtenir la meilleure image possible.

Additional comments: [Printed ephemera] [4] p.
Commentaires supplémentaires:

This item is filmed at the reduction ratio checked below/
Ce document est filmé au taux de réduction indiqué ci-dessous.

10X	12X	14X	16X	18X	20X	22X	24X	26X	28X	30X	32X
			/								

The copy filmed here has been reproduced thanks to the generosity of:

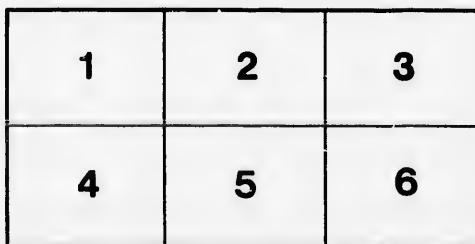
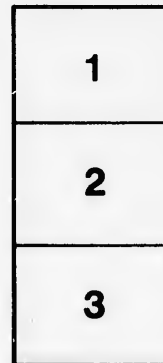
Douglas Library
Queen's University

The images appearing here are the best quality possible considering the condition and legibility of the original copy and in keeping with the filming contract specifications.

Original copies in printed paper covers are filmed beginning with the front cover and ending on the last page with a printed or illustrated impression, or the back cover when appropriate. All other original copies are filmed beginning on the first page with a printed or illustrated impression, and ending on the last page with a printed or illustrated impression.

The last recorded frame on each microfiche shall contain the symbol \rightarrow (meaning "CONTINUED"), or the symbol ∇ (meaning "END"), whichever applies.

Maps, plates, charts, etc., may be filmed at different reduction ratios. Those too large to be entirely included in one exposure are filmed beginning in the upper left hand corner, left to right and top to bottom, as many frames as required. The following diagrams illustrate the method:



L'exemplaire filmé fut reproduit grâce à la générosité de:

Douglas Library
Queen's University

Les images suivantes ont été reproduites avec le plus grand soin, compte tenu de la condition et de la netteté de l'exemplaire filmé, et en conformité avec les conditions du contrat de filmage.

Les exemplaires originaux dont la couverture en papier est imprimée sont filmés en commençant par le premier plat et en terminant soit par la dernière page qui comporte une empreinte d'impression ou d'illustration, soit par le second plat, selon le cas. Tous les autres exemplaires originaux sont filmés en commençant par la première page qui comporte une empreinte d'impression ou d'illustration et en terminant par la dernière page qui comporte une telle empreinte.

Un des symboles suivants apparaîtra sur la dernière image de chaque microfiche, selon le cas: le symbole \rightarrow signifie "A SUIVRE", le symbole ∇ signifie "FIN".

Les cartes, planches, tableaux, etc., peuvent être filmés à des taux de réduction différents. Lorsque le document est trop grand pour être reproduit en un seul cliché, il est filmé à partir de l'angle supérieur gauche, de gauche à droite, et de haut en bas, en prenant le nombre d'images nécessaire. Les diagrammes suivants illustrent la méthode.

rrata
to

pelure,
n à

52

A Great Invention !

Which Means in the Future

No More Dull Table Knives.



Patent Applied For.

MOOORE'S KNIFE SHARPENER
is the result of a lot of experiment-
ing, and a more perfect one cannot be found
and each one is **Guaranteed** to give per-
fect satisfaction in every respect.



READ INSIDE FOR INFORMATION.

Price, 25 Cents.

MANUFACTURED BY

CHARLES E. MOORE,

HAMILTON, - ONTARIO.

LP

F5012

1900?

M821

© 1900

MOORE'S TABLE KNIFE SHARPENER.

Among the many inventions got up for the benefit of the mistress of the house is the **Table Knife Sharpener**, manufactured and brought out by Chas. E. Moore. Among the many duties of the household there is nothing that will wear the edge of anyone's temper quicker than cutting the different commodities with a dull knife. This Sharpener is filling the place of a **long felt want**. It is far ahead of the old-time steel, because a child can operate it on account of its simplicity. A knife is a tool that must be **kept keen** or else it is just about useless, and to keep it keen and always ready for use you must have a **first-class tool** to do it with, and this tool is the **Moore Knife Sharpener**, which is put at a **very low price** so that it can be had in every house.

June 1973

5-

J. Mappin

HST/49

June/73

5-

J. Mcgiffin

The case is made of brass and is all in one piece, so that no part can be mislaid or lost. It is beautifully nickel-plated and contains **two files** (one for each side of the knife), both of which are of special make and specially adapted for the purpose of putting a **fine smooth edge on the knife**. The files are so arranged in grooves that when the file becomes a little dull it can be moved a little either way so as to give it a new sharpening surface. In this way the Sharpener **will last for years**. We therefore claim it to be the best Knife Sharpener on the market for the following reasons :

1. It will sharpen any size knife.
2. It is simple to operate and no danger of cutting yourself as with a steel.
3. It does not wear the knife away like a grindstone.
4. It will last for years.

And last, it costs little and is in the reach of every one.



1204918

H57/49

DIRECTIONS.

Hold the Sharpener firmly on the table under the left hand and draw the knife (**never push**) through the Sharpener, touching the files in a slanting position (as illustrated). Draw the knife first on one file, then on the other once or twice and your knife will have a **perfect edge**.

Important !

In case the files should come out of the Sharpener, be sure to put them in the same way as they came out, as files only cut one way, and will be useless put back the wrong way. When the files become worn a new sharpening surface can be had by slightly moving them along in the grooves.

FOR SALE BY

