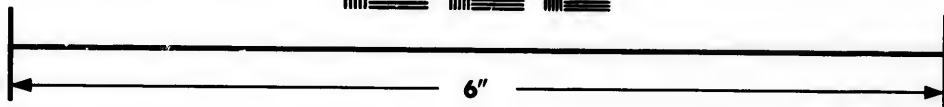
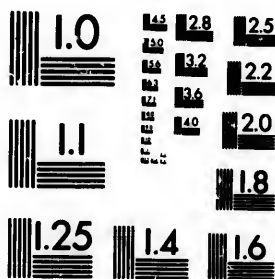


**IMAGE EVALUATION
TEST TARGET (MT-3)**



**Photographic
Sciences
Corporation**

23 WEST MAIN STREET
WEBSTER, N.Y. 14580
(716) 872-4503

LE 128
LE 125
LE 122
LE 120
LE 118

**CIHM/ICMH
Microfiche
Series.**

**CIHM/ICMH
Collection de
microfiches.**



Canadian Institute for Historical Microreproductions / Institut canadien de microreproductions historiques

TO
F

© 1983

Technical and Bibliographic Notes/Notes techniques et bibliographiques

The Institute has attempted to obtain the best original copy available for filming. Features of this copy which may be bibliographically unique, which may alter any of the images in the reproduction, or which may significantly change the usual method of filming, are checked below.

L'institut a microfilmé le meilleur exemplaire qu'il lui a été possible de se procurer. Les détails de cet exemplaire qui sont peut-être uniques du point de vue bibliographique, qui peuvent modifier une image reproduite, ou qui peuvent exiger une modification dans la méthode normale de filmage sont indiqués ci-dessous.

- Coloured covers/
Couverture de couleur
- Covers damaged/
Couverture endommagée
- Covers restored and/or laminated/
Couverture restaurée et/ou pelliculée
- Cover title missing/
Le titre de couverture manque
- Coloured maps/
Cartes géographiques en couleur
- Coloured ink (i.e. other than blue or black)/
Encre de couleur (i.e. autre que bleue ou noire)
- Coloured plates and/or illustrations/
Planches et/ou illustrations en couleur
- Bound with other material/
Relié avec d'autres documents
- Tight binding may cause shadows or distortion
along interior margin/
Le reliure serrée peut causer de l'ombre ou de la
distortion le long de la marge intérieure
- Blank leaves added during restoration may
appear within the text. Whenever possible, these
have been omitted from filming/
Il se peut que certaines pages blanches ajoutées
lors d'une restauration apparaissent dans le texte,
mais, lorsque cela était possible, ces pages n'ont
pas été filmées.
- Additional comments:
Commentaires supplémentaires:

- Coloured pages/
Pages de couleur
- Pages damaged/
Pages endommagées
- Pages restored and/or laminated/
Pages restaurées et/ou pelliculées
- Pages discoloured, stained or foxed/
Pages décolorées, tachetées ou piquées
- Pages detached/
Pages détachées
- Showthrough/
Transparence
- Quality of print varies/
Qualité inégale de l'impression
- Includes supplementary material/
Comprend du matériel supplémentaire
- Only edition available/
Seule édition disponible
- Pages wholly or partially obscured by errata
slips, tissues, etc., have been refilmed to
ensure the best possible image/
Les pages totalement ou partiellement
obscuries par un feuillet d'errata, une pelure,
etc., ont été filmées à nouveau de façon à
obtenir la meilleure image possible.

This item is filmed at the reduction ratio checked below/
Ce document est filmé au taux de réduction indiqué ci-dessous.

10X	14X	18X	22X	26X	30X
<input type="checkbox"/>	<input type="checkbox"/>	<input type="checkbox"/>	<input checked="" type="checkbox"/>	<input type="checkbox"/>	<input type="checkbox"/>
12X	16X	20X	24X	28X	32X

The copy filmed here has been reproduced thanks to the generosity of:

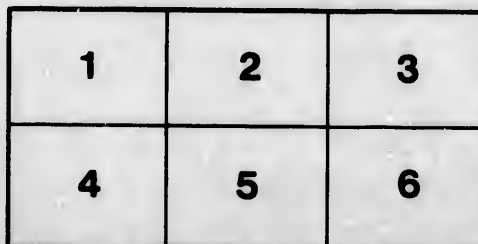
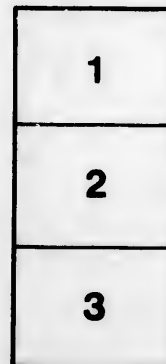
Hamilton Public Library

The images appearing here are the best quality possible considering the condition and legibility of the original copy and in keeping with the filming contract specifications.

Original copies in printed paper covers are filmed beginning with the front cover and ending on the last page with a printed or illustrated impression, or the back cover when appropriate. All other original copies are filmed beginning on the first page with a printed or illustrated impression, and ending on the last page with a printed or illustrated impression.

The last recorded frame on each microfiche shall contain the symbol \rightarrow (meaning "CONTINUED"), or the symbol ∇ (meaning "END"), whichever applies.

Maps, plates, charts, etc., may be filmed at different reduction ratios. Those too large to be entirely included in one exposure are filmed beginning in the upper left hand corner, left to right and top to bottom, as many frames as required. The following diagrams illustrate the method:



L'exemplaire filmé fut reproduit grâce à la générosité de:

Hamilton Public Library

Les images suivantes ont été reproduites avec le plus grand soin, compte tenu de la condition et de la netteté de l'exemplaire filmé, et en conformité avec les conditions du contrat de filmage.

Les exemplaires originaux dont la couverture en papier est imprimée sont filmés en commençant par le premier plat et en terminant soit par la dernière page qui comporte une empreinte d'impression, soit par le second plat, selon le cas. Tous les autres exemplaires originaux sont filmés en commençant par la première page qui comporte une empreinte d'impression ou d'illustration et en terminant par la dernière page qui comporte une telle empreinte.

Un des symboles suivants apparaîtra sur la dernière image de chaque microfiche, selon le cas: le symbole \rightarrow signifie "A SUIVRE", le symbole ∇ signifie "FIN".

Les cartes, planches, tableaux, etc., peuvent être filmés à des taux de réduction différents. Lorsque le document est trop grand pour être reproduit en un seul cliché, il est filmé à partir de l'angle supérieur gauche, de gauche à droite, et de haut en bas, en prenant le nombre d'images nécessaire. Les diagrammes suivants illustrent la méthode.

re
détails
es du
modifier
er une
filmage

es

errata
to

pelure,
on à

32X

50
11
2

561.971

1191

1192

CATALOGUE

--- OF ---

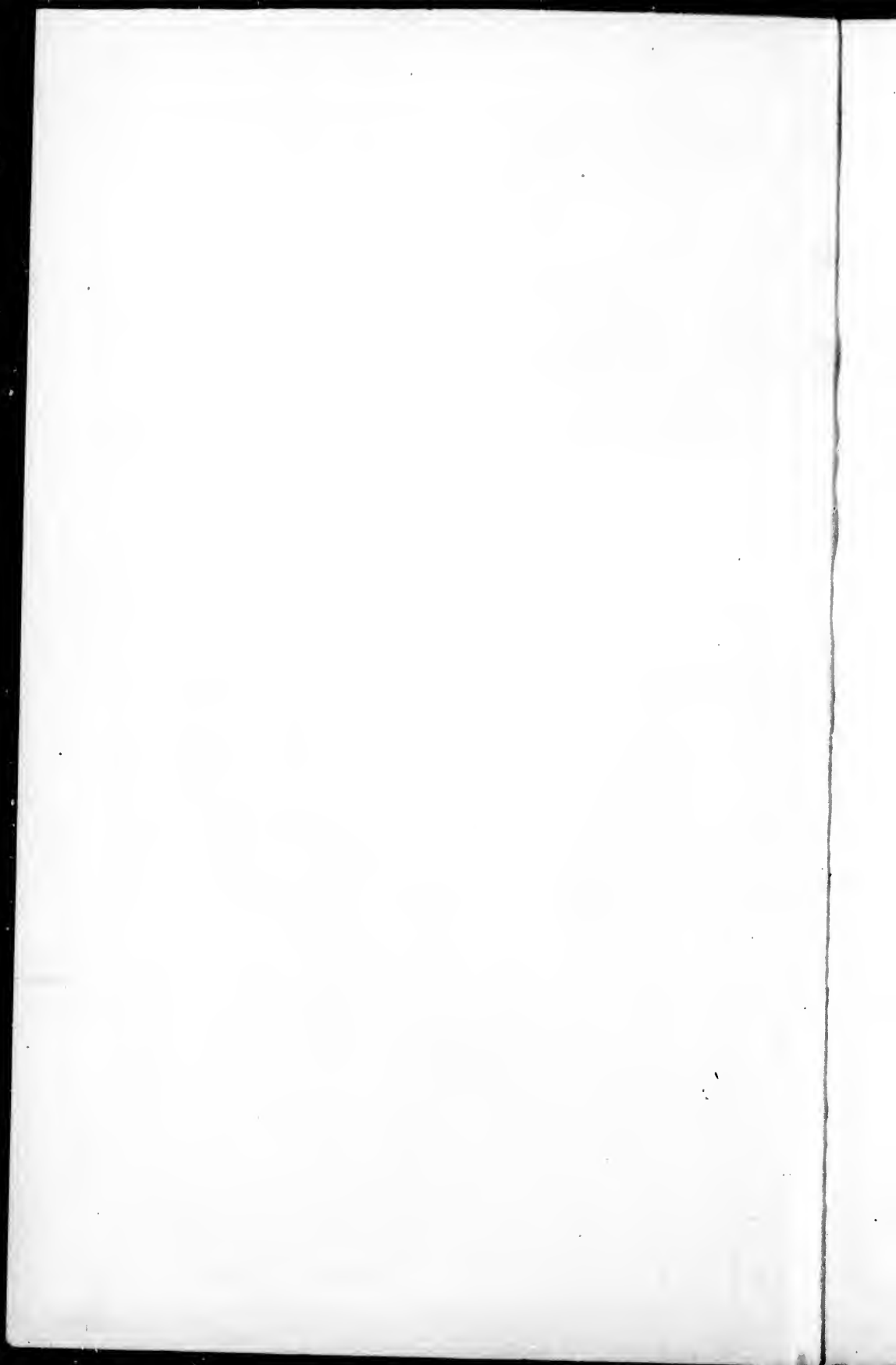
Local Botanical and Palæontological Specimens.



PREPARED BY

THE HAMILTON ASSOCIATION,

1896-97.



FLORA OF HAMILTON DISTRICT.

BY J. M. DICKSON AND A. ALEXANDER, F. S. S.

In preparing this list we have followed the classification and nomenclature of Dr. Asa Gray's Manual of the Botany of the Northern United States, sixth edition, second issue.

We have endeavored to make it as complete and as free from errors as possible; doubtful specimens having been submitted to John Macoun, M. A., F. L. S., F. R. S. C., Dominion Botanist, for positive identification.

Names of plants followed by (Craigie), (Logie) or (Buchan) are simply copied from lists previously published by these gentlemen.

Dr. Craigie, *Canadian Journal*, 1852. (We have not been able to obtain an original copy of this list.)

Judge Logie—"Flora of Hamilton." List of plants found growing in the neighborhood of Hamilton during the years 1859-61, including plants collected by Miss Kate Crooks: *Annals of the Botanical Society of Canada*.

J. M. Buchan, M. A.—"Flora Hamiltonensis." *Proceedings of the Canadian Institute*, 1883-84

RANUNCULACEAE.

- Clematis Virginiana—L.
- " verticillaris—D. C.
- Anemone cylindrica—Gray.
- " Virginiana—L.
- " Pennsylvanica—L.
- " nemorosa—L.
- " var. quinquefolia.
- Hepatica triloba—Chaix.
- " acutiloba—D. C.
- Anemonella thalictroides—Spach.
- Thalictrum dioicum—L.
- " polygamum—Muhl.
- " purpurascens—L.

- Ranunculus aquatilis—L., var. trichophyllus—Gray.
 “ multifidus—Pursh.
 “ Flammula—L., var. reptans—E. Meyer.
 “ pusillus—Poir. (Logie.)
 “ abortivus—L.
 “ sceleratus—L.
 “ recurvatus—Poir.
 “ fascicularis—Muhl.
 “ repens—L.
 “ Pennsylvanicus—L. f.
 “ bulbosus—L.
 “ acris—L.
 Caltha palustris—L.
 Coptis trifolia—Salisb.
 Aquilegia Canadensis—L.
 Delphinium *Consolida*—L.
 Cimicifuga racemosa—Nutt.
 Actæa spicata—L., var. rubra—Ait.
 “ alba—Bigelow.

MAGNOLIACEAE.

- Liriodendron Tulipifera—L.

MENISPERMACEAE.

- Menispermum Canadense—L.

BERBERIDACEAE.

- Berberis *vulgaris*—L.
 Caulophyllum thalictroides—Michx.
 Podophyllum peltatum—L.

NYMPHÆACEAE.

- Nymphaea odorata—Ait. (Logie).
 “ reniformis—D. C.
 Nuphar advena—Ait. f.

SARRACENIACEAE.

- Sarracenia purpurea—L.

PAPAVERACEAE.

- Sanguinaria Canadensis—L.

Chelidonium majus—L.
Papaver Argemone—L. (Buchan.)

FUMARIACEAE.

Adlumia cirrhosa—Raf. (Logie).
Dicentra Cucullaria—D. C.
 “ *Canadensis*—D. C.
Corydalis glauca—Pursh.
Fumaria officinalis—L. (Logie).

CRUCIFERAE.

Dentaria diphylla—L.
 “ *laciniata*—Muhl.
 “ *heterophylla*—Nutt. (Buchan.)
Cardamine rhomboidea—D. C.
 “ “ var. *purpurea*—Torr.
 “ *rotundifolia*—Michx.
 “ *pratensis*—L.
 “ *hirsuta*—L.
 “ *Pennsylvanica*—Muhl.
Arabis hirsuta—Scop.
 “ *laevigata*—Poir.
 “ *Canadensis*—L.
Draba Caroliniana—Walt.
Alyssum calycinum—L.
Camelina sativa—Crantz.
Nasturtium officinale—R. Br.
 “ *sylvestre*, R. Br. (Buchan.)
 “ *palustre*—D. C.
 “ “ var. *hispidum*.
 “ *A Armoracia*—Fries.
Barbarea vulgaris—R. Br. (Craigie.)
Erysimum cheiranthoides—L.
Sisymbrium canescens—Nutt.
 “ *officinale*—Scop.
Brassica Sinapis—Boiss.
 “ *nigra*—Koch.
Capsella Bursa-pastoris—Moench.
Thlaspi arvense—L.

- Lepidium Virginicum—L.
 “ intermedium Gray. (Logie.)
 “ *ruderaie*—L.
 “ *campestre* Br.

Cakile Americana—Nutt.

Raphanus *Raphanistrum*—L.

CAPPARIDACEAE.

Polanisia graveolens Raf.

CISTACEAE.

Helianthemum Canadense—Michx.

Lecher minor L.

VIOLACEAE.

Viola palmata, var. cucullata—Gray.

“ sagittata Ait.

“ Selkirkii Pursh.

“ palustris—L.

“ blanda—Willd.

“ “ var. renifolia—Gray.

“ lanceolata L.

“ pubescens—Ait.

“ Canadensis L.

“ striata Ait. (Logie.)

“ rostrata—Pursh.

“ canina—L., var. Muhlenbergii—Gray.

“ *tricolor* L.

“ “ var. *arvensis*.

CARYOPHYLLACEAE.

Dianthus *barbatus*—L.

Saponaria *officinalis*, L.

“ *Vaccaria*—L.

Silene *Cucubalus*—Wibel.

“ *antirrhina*—L.

“ *noctiflora* L.

Lychnis *Githago*—Lam.

Arenaria *serpyllifolia*—L.

“ *Michauxii*—Hook, f.

“ *lateriflora*—L.

- Stellaria media* Smith.
 " *longifolia* Muhl.
 " *longipes* Goldie. (Buchan).
Cerastium viscosum L.
 " *vulgatum*—L.
 " *mutans* Raf.
 " *arvense* L.
 " " var. *oblongifolium*—Hall and Britt.

PORTULACACEAE.

- Portulaca oleracea* L.
 " *grandiflora*—Hook. (Buchan).
Claytonia Virginica L.
 " *Caroliniana*—Michx. (Logie).

HYPERICACEAE.

- Hypericum Kalmianum*—L. (Logie).
 " *ellipticum*—Hook.
 " *perforatum*—L.
 " *maculatum*—Watt.
 " *mutilum*—L. (Buchan).
 " *Canadense* var. *minimum*—Chois.
Elodes campanulata—Pursh.

MALVACEAE.

- Malva rotundifolia* L.
 " *sylvestris* L.
 " *moschata*—L.
Callirhoe digitata.—Nutt.
Abutilon Avicenne Gaertn.

TILIACEAE.

- Tilia Americana*—L.

LINACEAE.

- Linum Virginianum*—L.
 " *usitatissimum*—L.

GERANIACEAE.

- Geranium maculatum*.—L.
 " *Robertianum*—L.
 " *pusillum*—L.

Erodium cicutarium—L'Her. (Logie & Buchan).

Oxalis corniculata var. *stricta*—Sav.

Impatiens pallida—Nutt.

“ *fulva*.—Nutt.

RUTACEAE.

Xanthoxylum Americanum—Mill.

ULICINEAE.

Hex verticillata—Gray.

Nemopanthes fascicularis—Raf.

CELASTRACEAE.

Celastrus scandens—L.

Euonymus atropurpureus—Jacq. (introduced).

“ *Americanus*, var. *abovatus*—Torr. & Gray.

RHAMNACEAE.

Rhamnus alnifolia—L'Her. (Logie).

Ceanothus Americanus—L.

VITACEAE.

Vitis Labrusca—L. (Buchan).

“ *cordifolia*—Michx.

“ *riparia*—Michx.

Ampelopsis quinquefolia—Michx.

SAPINDACEAE.

Aesculus Hippocastanum—L.

Acer spicatum—Lam.

“ *saccharinum*—Wang.

“ *dasy carpum*—Ehrh.

“ *rubrum*—L.

Negundo aceroides—Moench. (introduced)

Staphylea trifolia—L.

ANACARDIACEAE.

Rhus typhina—L.

“ *Toxicodendron*—L.

POLYGALACEAE.

Polygala paucifolia—Willd.

“ *polygama*—Walter.

- Polygala Senega—L.
 “ “ “ var. *latifolia*—Torr. & Gray.
 “ *sanguinea*—L. (Logie & Buchan).
 “ *fastigiata*—Nutt. (Craigie).
 “ *verticillata*—L.

LEGUMINOSAE.

- Baptisia tinctoria—R. Br. (Craigie).
 Lupinus perennis—L.
 Trifolium *arvense*—L.
 “ *pratense*—L.
 “ *repens*—L.
 “ *hybridum*—L.
 “ *procumbens*—L.
 “ *incarnatum*.
 Melilotus *officinalis*—Willd.
 “ *alba*—Lam.
 Medicago *sativa*—L.
 “ *lupulina*—L.
 Robinia *Pseudacacia*—L.
 “ *viscosa*—Vent.
 Astragalus *Canadensis*—L.
 “ *Cooperi*—Gray.
 Desmodium *nudiflorum*—D. C.
 “ *acuminatum*—D. C.
 “ *rotundifolium*—D. C.
 “ *cuspidatum*—Torr. & Gray.
 “ *Dillenii*—Darlingt. (Craigie.)
 “ *paniculatum*—D. C.
 “ *Canadense*—D. C.
 Lespedeza *procumbens*—Michx. (Logie.)
 “ *violacea*—Pers.
 “ *polystachya*—Michx. (Logie.)
 “ *capitata*—Michx.
 Vicia *sativa*—L.
 “ “ var. *angustifolia*—Seringe.
 “ *hirsuta*—Koch. (Logie).
 “ *Caroliniana*—Walt.

- Vicia Americana*—Muhl. (Craigie).
 “ *sepium*—L.
Lathyrus maritimus—Bigelow.
 “ *ochroleucus*—Hook.
 “ *palustris*—L.
 “ “ var. *myrtifolius*—Gray.
 “ *pratensis*—L. (Logie).
Apios tuberosa—Moench.
Strophostyles angulosa—Ell.
Amphicarpaea monoica—Nutt.
Gleditschia triacanthos—L.

ROSACEAE.

- Prunus Americana*—Marshall
 “ *Pennsylvanica*—L. f.
 “ *Virginiana*—L.
 “ *serotina*—Ehrh.
 “ *Cerasus*—L.
Spiraea salicifolia—L.
 “ *tomentosa*—L.
Physocarpus opulifolius—Maxim
Gillenia trifoliata—Moench.
Rubus odoratus—L.
 “ *triflorus*—Richardson.
 “ *strigosus*—Michx.
 “ *Occidentalis*—L.
 “ *villosus*—Ait.
 “ *Canadensis*—L.
 “ *hispidus*—L. Aut.
Dalibarda repens—L.
Geum album—Gmelin.
 “ *Virginianum*—L. (Craigie).
 “ *strictum*—Ait.
 “ *rivale*—L.
Waldsteinia fragarioides—Tratt.
Fragaria Virginiana—Mill.
 “ “ var. *Illinoensis*—Gray.
 “ *vesca*—L.

- Potentilla arguta—Pursh.
 “ Norvegica—L.
 “ supina—L.
 “ recta—L.
 “ argentea—L.
 “ palustris—Scop.
 “ Anserina—L.
 “ Canadensis—L.
 Agrimonia Eupatoria—L.
 Poterium *Sanguisorba*—L.
 Rosa blanda—Ait.
 “ Carolina—L.
 “ lucida—Ehrh.
 “ humilis—Marsh.
 “ *micrantha*—Smith. (Logie).
 “ *rubiginosa*—L.
 “ *cinnamomea*—L.
 Pyrus *Malus*—L.
 “ *communis*—L.
 “ coronaria—L.
 “ arbutifolia var. *melanocarpa*—Hook.
 “ *aucuparia*—Gaertn.
 Crataegus *oxyacantha*—L.
 “ coccinea—L.
 “ tomentosa—L.
 “ punctata—Jacq.
 “ Crus-galli—L.
 Amelanchier Canadensis—Torr. & Gray.
 “ “ var. *oblongifolia*—Torr. & Gray.

SAXIFRAGACEAE.

- Saxifraga Virginiensis—Michx.
 Tiarella cordifolia—L.
 Mitella diphylla—L.
 “ nuda—L.
 Chrysosplenium Americanum—Schwein.
 Parnassia Caroliniana—Michx.
 Ribes Cynosbati—L.

- Ribes rotundifolium—Michx.
 “ oxyacanthoides—L. (Logie.)
 “ lacustre—Poir.
 “ prostratum—L'Her. (Logie.)
 “ floridum—H'Her.
 “ rubrum—L., var. subglandulosum—Maxim (Logie.)

CRASSULACEAE.

- Penthorum sedoides—L.
 Sedum *ternatum*—Michx. (Buchan.)
 “ *acre*—L.
 “ *Telephium*—L.

DROSERACEAE.

- Drosera rotundifolia—L.

HAMAMELIDAE.

- Hamamelis Virginiana—L.

HALORAGACEAE.

- Myriophyllum spicatum—L. (Buchan.)
 “ verticillatum—L. (Logie.)
 “ heterophyllum—Michx. (Logie.)
 “ tenellum—Bigelow (Logie.)
 Hippuris vulgaris—L.

LYTHRACEAE.

- Decodon verticillatus—Ell.

ONAGRACEAE.

- Epilobium angustifolium—L.
 “ *hirsutum*—L.
 “ lineare—Muhl.
 “ strictum—Muhl. (Logie.)
 “ coloratum (?)—Muhl.
 “ adenocaulon—Haussk.
 “ palustre—L.
 Oenothera biennis—L.
 “ “ var. grandiflora—Lindl.
 “ pumila—L.

Circaea Lutetiana—L.

“ *alpina*—L.

CUCURBITACEAE.

Sicyos angulatus L. (Logie).

Echinocystis lobata Torr. & Gray.

FICOIDEAE.

Mollugo verticillata—L.

UMBELLIFERAE.

Daucus Carota—L.

Angelica atropurpurea—L.

Conioselinum Canadense—Torr. & Gray.

Heracleum lanatum—Michx.

Pastinaca sativa—L.

Thaspium aureum—Nutt.

Pimpinella integerrima—Benth & Hook.

Cryptotaenia Canadensis—D. C.

Sium cicutaefolium—Gmelin.

Carum Carui—L.

Cicuta maculata—L.

“ *bulbifera*—L.

Osmorrhiza brevistylis—D. C.

“ *longistylis*—D. C.

Hydrocotyle Americana—L.

Sanicula Marylandica—L.

“ “ var. *Canadensis*—Torr.

ARALIACEAE.

Aralia racemosa—L.

“ *nudicaulis*—L.

“ *quinquefolia*—Decsne. & Planch.

“ *trifolia*—Decsne. & Planch.

CORNACEAE.

Cornus Canadensis—L.

“ *florida*—L.

“ *circinata*—L'Her.

“ *stolonifera*—Michx.

Cornus paniculata—L'Her.

“ *alternifolia*—L. f.

CAPRIFOLIACEAE.

Sambucus Canadensis—L.

“ *racemosa*—L.

Viburnum Opulus—L.

“ *acerifolium*—L.

“ *pubescens*—Pursh.

“ *cassinoides*—L.

“ *Lentago*—L.

Triosteum perfoliatum—L.

Linnæa borealis—L.

Symphoricarpos occidentalis—Hook. (Logie).

“ *racemosus*—Michx.

“ “ var. *pauciflorus*—Robbins.

Lonicera ciliata—Muhl.

“ *hirsuta*—Eaton. (Buchan).

“ *Sullivantii*—Gray. (Logie).

“ *glauca*—Hill.

“ *Tartarica*—L.

Diervilla trifida—Moench.

RUBIACEAE.

Cephalanthus occidentalis—L.

Mitchella repens—L.

Galium verum—L.

“ *Aparine*—L.

“ *lanceolatum*—Torr.

“ *boreale*—L.

“ *trifidum*—L.

“ *asprellum*—Michx.

“ *triflorum*—Michx.

Asperula arvensis—L.

DIPSACEAE.

Dipsacus sylvestris—Mill.

COMPOSITAE.

Eupatorium purpureum—L.

“ *perfoliatum*—L.

- Eupatorium ageratoides*—L.
Liatris cylindracea—Michx.
Solidago squarrosa—Muhl.
 " *caesia*—L.
 " *latifolia*—L.
 " *bicolor*—L.
 " *humilis*—Pursh.
 " *stricta*—Ait. (Logie)
 " *puberula*—Nutt. (Craigie).
 " *speciosa*—Nutt.
 " *odora*—Ait. (Logie).
 " *patula*—Muhl.
 " *rugosa*—Mill.
 " *ulmifolia*—Muhl (Buchan)
 " *arguta*—Ait.
 " *juncea*—Ait.
 " " *var. scabrella*—Gray.
 " *serotina*—Ait.
 " " *var. gigantea*—Gray.
 " *Canadensis*—L.
 " " *var. scabra*.
 " *nemoralis*—Ait.
 " *rigida*—L.
 " *lanceolata*—L.
Aster corymbosus—Ait.
 " *macrophyllus*—L.
 " *Novae-Angliae*—L.
 " *patens*—Ait. (Craigie).
 " *azureus*—Lindl.
 " *undulatus*—L.
 " *cordifolius*—L.
 " *sagittifolius*—Willd.
 " *laevis*—L.
 " *multiflorus*—Ait.
 " *dumosus*—L. (Craigie).
 " *diffusus*—Ait.
 " *Tradescanti*—L.
 " *paniculatus*—Lam.

- Aster salicifolius—Ait. (Buchan).
 “ Novi-Belgii—L. (Craigie).
 “ prenanthoides—Muhl. (Craigie).
 “ puniceus—L.
 “ umbellatus—Mill.
 “ ptarmicoides—Torr. & Gray.
 “ acuminatus—Michx. (Craigie).
 “ tenuifolius—L.
- Erigeron Canadensis—L.
 “ annuus—Pers.
 “ strigosus—Muhl.
 “ hyssopifolius—Michx.
 “ bellidifolius—Muhl.
 “ Philadelphicus—L.
- Antennaria plantaginifolia—Hook.
 Anaphalis margaritacea—Benth & Hook.
 Gnaphalium polycephalum—Michx.
 “ decurrens—Ives.
 “ uliginosum—L.
- Inula *Helenium*—L.
- Polymnia Canadensis—L.
- Ambrosia artemisiaefolia—L.
- Xanthium *spinosa*—L.
 “ *strumarium*—L. (Logie).
 “ Canadense—Mill.
- Heliopsis laevis—Pers.
 “ scabra—Dunal.
- Rudbeckia laciniata—L.
 “ hirta—L.
- Helianthus giganteus—L.
 “ divaricatus—L.
 “ strumosus—L.
 “ decapetalus—L.
- Bidens frondosa—L.
 “ connata—Muhl.
 “ cernua—L.
 “ chrysanthemoides—Michx.
 “ Beckii—Torr.

- Helenium autumnale—L. (Logie).
 Anthemis *Cotula*—D. C.
 Achillea Millefolium—L.
 Chrysanthemum *Leucanthemum*—L.
 “ *Balsamitae*—L.
 Tanacetum *vulgare*—L.
 Artemisia Canadensis—Michx.
 “ Ludoviciana—Nutt. (Craigie).
 “ *Abrotinum*—L.
 “ *vulgaris*—L.
 “ biennis—Willd.
 “ *Absinthium*—L.
 Petasites palmata—Gray.
 Senecio *vulgaris*—L.
 “ lobatus—Pers. (Logie).
 “ palustris (?)—Hook. (Logie).
 “ aureus—L.
 “ *Jacobaea*—L.
 Erechites hieracifolia—Raf.
 Arctium *Lappa*—L.
 Cnicus *lanceolatus*—Hoffm.
 “ altissimus var. discolor—Gray.
 “ muticus—Pursh.
 “ *arvensis*—Hoffm.
 Onopordon *Acanthium*—L.
 Centaurea *Cyanus*—L.
 “ *nigra*—L.
 Lampsana *communis*—L. (Logie.)
 Cichorium *Intybus*—L.
 Tragopogon *porrifolius*—L.
 Leontodon *autumnalis*—L.
 Hieracium *aurantiacum*—L.
 “ *murorum*—L.
 “ Canadense—Michx.
 “ paniculatum—L.
 “ venosum—L.
 “ scabrum—Michx.
 “ Gronovii—L.

Hieracium longipilum—Torr. (Craigie & Logie.)

Prenanthes alba—L.

“ *serpentaria*—Pursh.

“ *altissima*—L.

Taraxacum officinale—Weber.

Lactuca sativa—L.

“ *Canadensis*—L.

“ *Floridana*—Gaertn. (Logie.)

“ *leucophaea*—Gray.

Sonchus oleraceus—L.

“ *asper*—Vill.

“ *arvensis*—L.

LOBELIACEAE.

Lobelia cardinalis—L.

“ *syphilitica*—L.

“ *puberula*—Michx (Craigie.)

“ *spicata*—Lam.

“ *inflata*—L.

“ *Dortmanna*—L.

CAMPANULACEAE.

Specularia perfoliata—A. DC.

Campanula rapunculoides—L.

“ *rotundifolia*—L.

“ *aparinoides*—Pursh.

“ *Americana*—L.

ERICACEAE.

Gaylussacia resinosa—Torr. & Gray.

Vaccinium stamineum—L.

“ *Pennsylvanicum*—Lam.

“ *vacillans*—Solander.

“ *corymbosum*—L.

“ *macrocarpon*—Ait.

Chiogenes serpyllifolia—Salisb.

Gaultheria procumbens—L.

Cassandra calyculata—Don.

Kalmia glauca—Ait.

Ledum latifolium—Ait.

- Chimaphila umbellata*—Nutt.
 “ *maculata*—Pursh. (Craigie).
Moneses grandiflora—Salisb.
Pyrola secunda—L.
 “ *elliptica*—Nutt.
 “ *rotundifolia*—L.
 “ “ var. *asarifolia*—Hook.
 “ “ “ *uliginosa*—Gray
 “ “ “ *incarnata*—DC.
Pterospora Andromedea—Nutt. (Logie).
Monotropa uniflora—L.
 “ *Hypopitys*—L. (Logie).

PRIMULACEAE.

- Trientalis Americana*—Pursh.
Steironema ciliatum—Raf.
Lysimachia quadrifolia—L.
 “ *stricta*—Ait.
 “ *thyrsiflora*—L.
Anagallis arvensis—L.
Samolus Valerandi—L., var. *Americanus*—Gray (Buchan.)

OLEACEAE.

- Fraxinus Americana*—L.
 “ *sambucifolia*—Lam.
Ligustrum vulgare—L.

APOCYNACEAE.

- Apocynum androsacmifolium*—L.
 “ *cannabinum*—L.

ASCLEPIADACEAE.

- Asclepias tuberosa*—L.
 “ *incarnata*—L.
 “ *Cornuti*—Decaisne
 “ *phytolaccoides*—Pursh.
 “ *variegata* (?)—L. (Logie).
 “ *quadrifolia*—L.

GENTIANACEAE.

- Gentiana crinita*—Froel

- Gentiana Amarella—L. (Logie).
 “ quinqueflora—Lam. (Craigie)
 “ Andrewsii—Griseb.
 “ alba—Muhl.

Frasera Carolinensis—Walt.

Halenia deflexa—Grisebach.

Menyanthes trifoliata—L.

POLEMONIACEAE.

Phlox divaricata—L.

HYDROPHYLLACEAE.

Hydrophyllum Virginicum—L.

“ Canadense—L.

“ appendiculatum—Michx.

BORRAGINACEAE.

Cynoglossum *officinale*—L.

Echinosperrnum Virginicum—Lchm.

“ *Lappula*—Lchm.

Myosotis *palustris*—Witnering.

“ *laxa*—Lchm.

“ *arvensis*—Hoffm.

“ *verna*—Nutt.

Lithospermum *arvense*—L.

“ *canescens*—Lchm.

“ *angustifolium*—Michx.

Oenothera Caroliniana—DC.

Symphytum *officinale*—L.

Echium *vulgare*—L.

CONVOLVULACEAE.

Convolvulus spithameus—L.

“ *sepium*—L.

“ “ *var. repens*—Gray.

“ *arvensis*—L.

Cuscuta Gronovii—Willd.

SOLANACEAE.

Solanum *Dulcamara*—L.

“ *nigrum*—L.

Physalis Virginiana—Mill.
Nicandra physaloides—Gaertn.
Lycium vulgare—Dunal.
Datura Stramonium L.
 " *Tatula*—L.
Nicotiana rustica L.

SCROPHULARIACEAE.

Verbascum Thapsus—L.
 " *Blattaria*—L.
Linaria vulgaris—Mill.
Scrophularia nodosa—L., var. *Marilandica* Gray.
Chelone glabra—L.
Pentstemon pubescens—Solander.
Mimulus ringens—L.
Gratiola Virginiana—L.
 " *aurea*—Muhl.
Hysanthes riparia—Raf (Buchan).
Veronica Anagallis—L.
 " *Americana*—Schweinitz.
 " *scutellata*—L.
 " *officinalis*—L.
 " *serpyllifolia*—L.
 " *peregrina*—L.
 " *arvensis*—L.
 " *Buxbaumii*—Tenore.
Gerardia pedicularia—L.
 " *flava*—L.
 " *quercifolia*—Pursh.
 " *laevigata*—Raf. (Logie).
 " *purpurea*—L. (Logie).
 " *tenuifolia*—Vahl., var. *asperula*—Gray.
Castilleja coccinea—Spreng.
Pedicularis Canadensis—L.
Melampyrum Americanum—Michx.

OROBANCHACEAE.

Epiphegus Virginiana—Bart.
Conopholis Americana—Wallroth (Logie).

Aphyllon uniflorum Gray.

LENTIBULARIACEAE.

Utricularia vulgaris—L.

“ *intermedia*—Hayne.

PEDALIACEAE.

Martynia proboscidea Glox.

VERBENACEAE.

Verbena arcticaefolia—L.

“ *hastata*—L.

Phryma leptostachya L.

LABIATAE.

Teucrium Canadense—L.

“ *occidentale*—Gray.

Ajuga reptans—L.

Collinsonia Canadensis—L.

Mentha viridis—L.

“ *piperita*—L.

“ *Canadensis*—L.

Lycopus Virginicus—L.

“ *sinuatus*—Ell.

Pycnanthemum muticum—Pers.

* “ *incanum* (?)—Mich. (Craigie & Logie.)

Satureia hortensis—L.

Calamintha Clinopodium—Benth.

Hedeoma pulegioides—Pers.

Salvia officinalis—L.

Monarda didyma—L.

“ *fistulosa*—L.

“ “ *var. mollis*—Benth.

“ *punctata*—L. (Logie.)

Lophanthus nepetoides—Benth.

Nepeta Cataria—L.

“ *Glechoma*—Benth.

Scutellaria lateriflora—L.

“ *parvula*—Michx.

“ *galericulata*—L.

*Doubtful; probably refers to *muticum*.

- Brunella vulgaris—L.
 Marrubium *vulgare*—L.
 Leonurus *Cardiaca*—L.
 Lamium *amplexicaule*—L. (Logie).
 “ *album*—L.
 Galeopsis *Tetralit*—L.
 Stachys palustris—L.
 “ *aspera*—Michx.

PLANTAGINACEAE.

- Plantago major—L.
 “ *Rugelii*—Decaisne.
 “ *lanceolata*—L.
 “ *media*—L.

AMARANTACEAE.

- Amaranthus *hypochondriacus*—L.
 “ *paniculatus*—L.
 “ *retroflexus*—L.
 “ *albus*—L.

CHENOPODIACEAE.

- Chenopodium *album*—L.
 “ *urbicum*—L. (Craigie).
 “ *hybridum*—L.
 “ *glaucum*—L.
 “ *Bonus-Henricus*—L.
 “ *capitatum*—Watson.
 “ *Botrys*—L.
 “ *ambrosioides*—L.

- Atriplex *patulum*—L.
 “ “ *var. hastatum*—Gray.
 “ “ *“ littorale*—Gray.

PHYTOLACCACEAE.

- Phytolacca *decandra*—L.

POLYGONACEAE.

- Rumex *Britannica*—L.
 “ *verticillatus*—L.
 “ *crispus*—L.

Rumex *obtusifolius*—L. (Buchan.)

“ *Acetosella*—L.

“ *Acetosa*—L.

Polygonum *aviculare*—L.

“ *erectum*—L.

“ *tenue*—Michx.

“ *lapathifolium*—L., var. *incarnatum*—Watson.

“ *Pennsylvanicum*—L.

“ *amphibium*—L.

“ *Muhlenbergii*—Watson (Buchan).

“ *Persicaria*—L.

“ *hydropiperoides*—Michx.

“ *Hydropiper*—L.

“ *acre*—H B K.

“ *Virginianum*—L.

“ *arifolium*—L.

“ *sagittatum*—L.

“ *Convolvulus*—L.

“ *dumetorum*—L., var. *scandens*—Gray.

Fagopyrum *esculentum*—Moench.

ARISTOLOCHIACEAE.

Asarum *Canadense*—L.

LAURACEAE.

Sassafras *officinale*—Nees.

Lindera *Benzoin*—Blume.

THYMELAEACEAE.

Dirca *palustris*—L.

ELAEAGNACEAE.

Shepherdia *Canadensis*—Nutt.

SANTALACEAE.

Comandra *umbellata*—Nutt.

EUPHORBIACEAE.

Euphorbia *polygonifolia*—L.

“ *maculata*—L.

“ *Preslii*—Guss. (L. & B.)

“ *corollata*—L. (Craigie).

- Euphorbia obtusata—Pursh. (I.ogie).
 “ *platyphylla*—L.
 “ *Helioscopia*—L.
 “ *Cyparissias*—L.
 “ *Peplus*—L.
 Acalypha Virginica—L.

URTICACEAE.

- Ulmus fulva—Michx.
 “ Americana—L.
 “ racemosa—Thomas.
 Cannabis *sativa*—L.
 Humulus Lupulus—L.
 Urtica gracilis—Ait.
 Laportea Canadensis—Gaud.
 Pilea pumila—Gray.
 Boehmeria cylindrica—Willd.

PLATANACEAE.

- Platanus occidentalis—L.

JUGLANDACEAE.

- Juglans cinerea—L.
 “ nigra—L.
 Carya alba—Nutt.
 “ porcina—Nutt.
 “ amara—Nutt.

MYRICACEAE.

- Myrica Gale—L.
 “ asplenifolia—Endl.

CUPULIFERAE.

- Betula lenta—L.
 “ lutea—Michx. f.
 “ papyrifera—Marshall.
 Alnus incana—Willd.
 Corylus rostrata—Ait.
 Ostrya Virginica—Willd.
 Carpinus Caroliniana—Walter.

- Quercus alba—L.
 “ macrocarpa—Michx.
 “ Muhlenbergii—Engelm.
 “ rubra—L.
 “ coccinea, var. tinctoria—Gray.
 Castanea sativa—Mill, var. Americana.
 Fagus ferruginea—Ait.

SALICACEAE.

- Salix nigra—Marsh.
 “ “ var. falcata—Torr.
 “ lucida—Muhl.
 “ alba—L.
 “ longifolia—Muhl.
 “ rostrata—Richardson.
 “ discolor—Muhl.
 “ humilis—Marsh.
 “ tristis—Ait. (Logie).
 “ viminalis—L.
 “ cordata—Muhl.
 Populus alba—L.
 “ tremuloides—Michx.
 “ grandidentata—Michx.
 “ balsamifera—L.
 “ monilifera—Ait.

CERATOPHYLLACEAE.

- Ceratophyllum demersum—L.

CONIFERAE.

- Pinus Strobus—L.
 Picea nigra—Link.
 “ alba—Link.
 Tsuga Canadensis—Carr.
 Abies balsamea—Miller.
 Larix Americana—Michx.
 Thuya occidentalis—L.
 Juniperus communis—L.
 “ Virginiana—L.
 Taxus Canadensis—Willd.

HYDROCHARIDACEAE.

Elodea Canadensis—Michx.
Vallisneria spiralis—L.

ORCHIDACEAE.

Calypso borealis—Salisb. (Logie).
Aplectrum hiemale—Nutt.
Corallorhiza innata—R. Br.
 “ *odontorhiza*—Nutt. (Buchan).
 “ *multiflora*—Nutt.
Spiranthes cernua—Richard.
Goodyera repens—R. Br.
 “ *pubescens*—R. Br.
 “ *Menziesii*—Lindl.
Pogonia ophioglossoides—Nutt (Logie).
Orchis spectabilis—L.
Habenaria tridentata—Hook.
 “ *virescens*—Spreng.
 “ *bracteata*—R. Br.
 “ *hyperborea*—R. Br.
 “ *dilatata*—Gray (Logie).
 “ *Hookeri*—Torr.
 “ *orbiculata*—Torr.
 “ *leucophaea*—Gray.
 “ *lacera*—R. Br.
 “ *psycodes*—Gray.
 “ *fimbriata*—R. Br. (Logie)
Cypripedium parviflorum—Salisb.
 “ *pubescens*—Willd.
 “ *spectabile*—Salisb.
 “ *acaule*—Ait.

IRIDACEAE.

Iris versicolor—L.
Sisyrinchium angustifolium—Mill.
 “ *anceps*—Cav.

AMARYLLIDACEAE.

Hypoxis erecta—L.

DIOSCOREACEAE.

Dioscorea villosa—L.

LILIACEAE.

Smilax herbacea—L.

“ *hispida*—Muhl.

Allium tricoccum—Ait.

Muscari botryoides—Mill.

Hemerocallis fulva—L.

Polygonatum biflorum—Ell.

“ *giganteum*—Dietrich.

Asparagus officinalis—L.

Smilacina racemosa—Desf.

“ *stellata*—Desf.

“ *trifolia*—Desf.

Maianthemum Canadense—Desf.

Streptopus roscus—Michx.

“ *amplexifolius*—DC.

Disporum lanuginosum—Benth. & Hook.

Clintonia borealis—Raf.

Uvularia perfoliata—L.

“ *grandiflora*—Smith.

Erythronium Americanum—Ker.

Lilium Philadelphicum—L.

“ *superbum*—L.

“ *Canadense*—L.

Medeola Virginiana—L.

Trillium erectum—L.

“ *grandiflorum*—Salisb.

“ “ var. (?) *viridescens*—Peck.

“ *cernuum*—L.

Tofieldia pubens—Ait. (Craigie.)

PONTEDERIACEAE.

Pontederia cordata—L.

Heteranthera graminea—Vahl.

JUNCACEAE.

Juncus effusus—L.

“ *Balticus*—Dethard, var. *littoralis*—Engelm.

- Juncus tenuis*—Willd.
 “ *bufonius*—L.
 “ *alpinus*—Villars, var. *insignis*—Fries.
 “ *acuminatus*—Michx.
 “ *nodosus*—L.
 “ “ var. *megacephalus*—Torr.
Luzula vernalis—DC.
 “ *campestris*—DC.

TYPHACEAE.

- Typha latifolia*—L.
Sparganium eurycarpum—Engelm.
 “ *simplex*—Huds.
 “ “ var. *angustifolium*—Engelm.

ARACEAE.

- Arisaema triphyllum*—Torr.
Calla palustris—L.
Symplocarpus foetidus—Salisb.
Acorus Calamus—L.

LEMNACEAE.

- Spirodela polyrrhiza*—Schleid.
Lemna trisulca—L.
 “ *minor*—L.
Wolffia Columbiana—Karsten.
 “ *Brasiliensis*—Weddell.

ALISMACEAE.

- Alisma Plantago*—L.
Sagittaria variabilis—Engelm.
 “ *graminea*, Michx.

NAIADACEAE.

- Potamogeton natans*—L.
 “ *amplifolius*—Tuckerm.
 “ *heterophyllus*—Schreb.
 “ *Zizii*—Mert & Koch.
 “ *lucens*—L. (Logie).
 “ *perfoliatus*—L.
 “ *zosteræfolius*—Schum.

Potamogeton pauciflorus—Pursh.
 “ pectinatus—L.

ERIOCAULEAE.

Eriocaulon septangulare—Withering.

CYPERACEAE.

Cyperus diandrus—Torr.

“ Schweinitzii—Torr.

“ filiculmis—Vahl.

“ strigosus—L.

Dulichium spathaceum—Pers.

Eleocharis ovata—R. Br.

“ palustris—R. Br.

“ tenuis—Schultes

“ acicularis—R. Br.

Scirpus pungens—Vahl.

“ lacustris—L.

“ fluviatilis—Gray.

“ atrovirens—Muhl.

Eriophorum cyperinum—L.

“ Virginicum—L.

“ polystachyon—L.

“ gracile—Koch.

Carex intumescens—Rudge.

“ lupulina—Muhl.

“ “ “ var pedunculata—Dewey.

“ Tuckermanni—Dewey.

“ retrorsa—Schwein.

“ lurida—Wahl.

“ Schweinitzii—Dewey.

“ hystericina—Muhl.

“ Pseudo-Cyperus—L. var. Americana—Hochst.

“ scabrata—Schwein.

“ riparia—W. Curtis.

“ stricta—Lam.

“ prasina—Wahl.

“ crinita—Lam.

“ gracillima—Schwein.

- Carex granularis*—Muhl.
 “ *laxiflora*—Lam.
 “ “ “ var. *striatula*—Carey (Buchan).
 “ “ “ “ *latifolia*—Boott.
 “ “ “ “ *patulifolia*—Carey (Buchan).
 “ *digitalis*—Willd.
 “ *laxiculmis*—Schwein.
 “ *platyphylla*—Carey.
 “ *plantaginea*—Lam.
 “ *Saltuensis*—Bailey.
 “ *aurea*—Nutt.
 “ *pedunculata*—Muhl.
 “ *varia*—Muhl.
 “ *Novae-Angliae*—Schwein (Buchan).
 “ *Pennsylvanica*—Lam.
 “ *polytrichoides*—Muhl.
 “ *stipata*—Muhl.
 “ *teretiusecula*—Gooden.
 “ *vulpinoidea*—Michx.
 “ *tenella*—Schk.
 “ *rosea*—Schk.
 “ *sparganioides*—Muhl.
 “ *cephalophora*—Muhl.
 “ *echinata*—Murray, var. *microstachys*—Boeckl.
 “ *trisperma*—Dewey.
 “ *bromoides*—Schk.
 “ *tribuloides*—Wahl.
 “ “ var. *cristata*—Bailey.
 “ *scoparia*—Schk.
 “ *straminea*—Willd.

GRAMINEAE.

- Panicum glabrum*—Gaudin.
 “ *sanguinale*—L.
 “ *capillare*—L.
 “ *xanthophysum*—Gray.
 “ *latifolium*—L.
 “ *depauperatum*—Muhl.

- Panicum dichotomum—L.
 " Crus-galli—L.
 " " var. hispidum.
 Setaria *verticillata*—Beauv.
 " *glauca*—Beauv.
 " *viridis*—Beauv.
 " *Italica*—Kunth.
 Cenchrus tribuloides—L.
 Leersia Virginica—Willd.
 " oryzoides—Swartz.
 Zizania aquatica—L.
 Andropogon furcatus—Muhl.
 " scoparius—Michx.
 Chrysopogon nutans—Benth.
 Phalaris *Canariensis*—L.
 " arundinacea—L.
 Anthoxanthum *odoratum*—L. (Logie.)
 Oryzopsis melanocarpa—Muhl.
 " asperifolia—Michx.
 Milium effusum—L.
 Muhlenbergia glomerata—Trin.
 " Mexicana—Trin.
 " sylvatica—Torr. and Gray.
 " diffusa—Schreber (Logie).
 Brachyelytrum aristatum—Beauv.
 Phleum *pratense*—L.
 Alopecurus *geniculatus*—L., var. aristulatus—Torr.
 Sporobolus asper—Kunth.
 " vaginaeflorus—Vasey.
 " cryptandrus—Gray.
 Agrostis *alba*—L.
 " " var. *vulgaris*—Thurb.
 " perennans—Tuckerm.
 " scabra—Willd.
 Cinna arundinacea—L.
 Calamagrostis Canadensis—Beauv.
 " confinis—Nutt.
 Holcus *lanatus*—L.

- Deschampsia flexuosa—Trin.
 Avena striata—Michx.
 " *fatua*—L.
 Danthonia spicata—Beauv.
 Cynodon *Dactylon*—Pers.
 Bouteloua oligostachya—Torr.
 Eleusine *Indica*--Gaertn (Logie).
 Phragmites communis—Trin.
 Munroa squarrosa—Torr.
 Eatonia Pennsylvanica—Gray.
 Eragrostis *minor*—Host.
 Dactylis *glomerata*—L.
 Poa *annua*—L.
 " *compressa*—L.
 " *nemoralis*—L.
 " *serotina*—Ehrhart.
 " *pratensis*—L.
 " *debilis*—Torr.
 Glyceria Canadensis—Trin.
 " *elongata*—Trin.
 " *nervata*—Trin.
 " *pallida*—Trin.
 " *grandis*—Watson.
 " *fluitans*—R. Br
 Festuca *tenella*—Willd.
 " *ovina*—L.
 " *nutans*—Willd.
 " *clatior*—L., var. *pratensis*—Gray.
 Bromus *Kalmii*—Gray.
 " *scalinus*—L.
 " *ciliatus*—L.
 Lolium *perenne*—L.
 Agropyrum *repens*—Beauv.
 " *caninum*—R. & S.
 Elymus *Virginicus*—L.
 " *Canadensis*—L.
 " " var. *glaucifolius*--Gray.
 " *striatus*—Willd.

Asprella Hystrix—Willd.

EQUISETACEAE.

Equisetum arvense—L.

“ *pratense*—Ehrh.

“ *sylvaticum*—L.

“ *palustre*—L.

“ *limosum*—L.

“ *hyemale*—L.

“ *variegatum*—Schleicher.

“ *scirpoides*—Michx.

FILICES.

Polypodium vulgare—L.

Adiantum pedatum—L.

Pteris aquilina—L.

Pellaea gracilis—Hook.

“ *atropurpurea*—Link.

Woodwardia Virginica—Smith.

Asplenium Trichomanes—L.

“ *thelypteroides*—Michx.

“ *Filix foemina*—Bernh.

Camptosorus rhizophyllus—Link

Phegopteris hexagonoptera—Fee.

“ *Dryopteris*—Fee.

Aspidium Thelypteris—Swartz

“ *Noveboracense*—Swartz.

“ *spinulosum*—Swartz.

“ “ “ var. *intermedium*—

D. C. Eaton.

“ “ “ “ *dilatatum*—Hook

(Logie).

“ *Boottii*—Tuckerm.

“ *cristatum*—Swartz.

“ “ “ var. *Clintonianum*.

“ *Goldianum*—Hook.

“ *marginale*—Swartz.

“ *acrostichoides*—Swartz.

Cystopteris bulbifera—Bernh.

“ *fragilis*—Bernh.

- Onoclea sensibilis*—L.
 “ *Struthiopteris*—Hoffman.
Dicksonia pilosiuscula—Willd.
Osmunda regalis—L.
 “ *Claytoniana*—L.
 “ *cinnamomea*—L.

OPHIOGLOSSACEAE.

- Botrychium ternatum*—Swartz, var. *lunarioides*—(Buchan).
 “ “ “ “ *obliquum*.
 “ *Virginianum*—Swartz.

LYCOPODIACEAE.

- Lycopodium lucidulum*—Michx.
 “ *annotinum*—L.
 “ *obscurum*—L.
 “ *clavatum*—L.
 “ *complanatum*—L.

SELAGINELLACEAE.

- Selaginella apus*—Spring.

SALVINIACEAE.

- Azolla Caroliniana*—Willd. (Buchan.)

MARCHANTIACEAE.

- Marchantia polymorpha*—L.

Note error in local *additions* : *Lithospermum angustifolium*—Michx. (*L. longiflorum*—Spreng.) was reported by Judge Logie.

***LIST OF LOCAL FOSSILS NOT PREVIOUSLY REPORTED
IN THE JOURNAL OF PROCEEDINGS.**

PREPARED BY COL. C. C. GRANT.

NIAGARA FOSSILS.

SPONGIDAE.

<i>Genera and Species.</i>	<i>Authority and Reference.</i>
Stromatopora concentrica	Goldfuss, 1820, Germ. Pet.
Caunopora Walkeri	Spencer, 1882, Niag. Fossils
" mirabilis	" " "
Cornostoma constellatum	Hall, 1852, Pal. N. Y.
" botryordea	Spencer, 1882, Niag. Fossils
Dictyostoma reticulata	" " "
Astylospongia præmorsa	Goldfuss, 1880, Germ. Pet.
" (species.)	
Aulocopira Granti	Billings, 1875, Can. Nat.

Large numbers undetermined yet, sent to Dr. Head and
Prof. Rauff, who named a few.

HYDROZOA.

Phyllograptus dubius	Spencer, 1882, Niag. Fossils
Dendrograptus ramosus	" "
" simplex	" "
" Dawsoni	" "
" frondosus	" "
" prægracilis	" "
" spinosus	" "
Callograptus Granti	" "
" Niagarensis	" "
" (Dendrograptus) multicaulis	" "
" minutus	" "

* The Association purpose preparing, during the coming session, a list of all paleontological specimens contained in the museum.

<i>Genus and Species.</i>	<i>Authority and Reference.</i>
Dietyonema retiforme	Hall, 1852, Pal. N. Y.
“ gracilis	“ “
“ Websteri	Dawson, 1868, Acad. Geol.
“ tenellum	Spencer, 1878, Can. Nat.
Calyptograptus cyatheiformis	“ “
“ subretiformis	“ “
“ micronematodes	Spencer, 1882, Can. Nat.
“ radiatus	“ “
Rhizograptus bulbosus	Spencer, 1878, Can. Nat.
Acanthograptus Granti	“ “
“ pulcher	1882
Inocaulis plumulosa	Hall, 1852, Pal. N. Y.
“ bella	Hall and Whitfield, 1874, Pal. Ohio
“ Walkeri	Spencer, 1882, Niag. Foss.
“ problematica	“ “ “
“ diffusa	“ “ “
“ ramulosa	“ “ “
“ Corsicornis	“ “ “
“ phyordes	“ “ “
Thamnograptus Bartonensis	
“ multiformis	
Ptilograptus foliaceus	Spencer, 1878, Can. Nat.
Cyclograptus rotadentatus	“ “ “

About 400 specimens in Washington, sent to Dr. Gurley for description, including several new species.

ACTINOZOA.

Favosites Niagarensis	Hall, 1852, Pal. N. Y., Vol. II.
“ favosa	Goldfuss, 1826, Germ. Pet.
Astrocerium constrictum	Hall, 1852, Pal. N. Y., Vol. II.
Syringolites nuronensis	Hinde, 1879, Geol. Mag.
Cladopora multipora	Hall, 1852, Pal. N. Y., Vol. II.
Striatopora flexuosa	“ “ “
Halysites Catenularia	Linn, 1767, Sys. Nat.
Syringopora verticillata	Goldfuss, 1826, Germ. Pet.
“ rugosa	“ “
Cyathophyllum radiculum	Rominger, 1876

*Genera and Species.**Authority and Reference.*

- Omphyma Stokesi* Milne Edwards, 1876
Petraea Streptelasma Calycula Hall, 1852, Pal. N. Y., Vol. II.
Asteroidea Petraster bellulus Billings, 1865

TABULATA.

- Chonophyllum Niagarensis* Hall, Pal. N. Y., Vol. II., Niag. Gp.

ECHINODERMATA.

- Crinoidea and Cystoidea
Lyriocrinus Dactylus Hall, 1852, Pal. N. Y., Vol. II.
Thysanocrinus lilliformis " " "
Eucalyptocrinus decorus Phillips, 1829, Murch. Sil. Fossils
Stephanocrinus angulatus Conrad, 1842
Caryocrinus ornatus Say, 1825
Eucalyptocrinus Crassus Hall, 1863, Vol. IV., Niag. Group.

POLYZOA.

- Ceramopora foliacea* Hall, Pal. N. Y., 1852, Vol. II.
Fenestella elegans " " "
Lichenalia concentrica " " "
Trematopora ostiolata " " "
Clathropora gracilis Spencer, 1882, Niag. Fossils
Polypora Fenestella Albionensis " 1880, "

BRYOZOA AND POLYZOA.

- Retepora asperatostriata* Hall, 1852, Pal. N. Y., Vol. II.
Lichenalia Hall (many species undescribed yet)
Cladopora " " "
Saganella elegans Hall

BRACHIOPODA.

SPIRIFERA.

- Crispa* Hisinger, 1826, Acad. Nat. Sc.
Niagarensis Conrad, 1842, Jour. Nat. Sc.
Radiata Hisinger, 1857, Pet.
Sulcata Sowerby, 1825, Min. Conch.
Plicitella, var. *radiata* Hall, 1867, 20th Report, N. Y.
Atrypa Reticularis Linn, 1767, Sys. Nat.
Athyris Meristina nitida Hall, 1852, Pal. N. Y., Vol. II.

RHYNCHONELLIDÆ.

<i>Genera and Species.</i>	<i>Authority and Reference.</i>
R. neglecta	Hall, Pal. N. Y., Vol. II.
obtusiplicata	“ “ “ “
var	“ “ “ “
rugosa	“ “ “ “
Pentamerus oblongus	Vannuxen, 1842, Pal. N. Y.
Stricklandinia Canadensis	Billings, 1859, Can. Nat.
R. pesum	Hall and Whitefield, 1875, Ohio Pal., Vol. II.
Indianensis	Hall, Vol. 4, Niag. group
Whitii	Hall (pre-occupied)
cuneata	Dolman, 1827
acinus	Hall, 1863, Niag. group, Vol. 4
Eichwoldia reticulata	Billings, 1858
Retzia (not R. evax.)	

STROPHOMENIDÆ.

Strophomena profundus	Hall, 1852, Pal. N. Y., Vol. II.
“ rhomboidalis	Wallenburg, 1821
Stropodonta semifosciata	Hall, 1863
Striptorynchus tenuis	“ 1859
Leptæna transversalis	Dolman, 1827
Orthis elegantula	“
“ flabellum	Hall, 1843
“ porcata	McCoy, 1846, Sil. Foss.
Strophomena Leda	Billings, Can. Geol., Vol. V.
Stroph. subplana	Conrad, 1842, Vol. VIII.
Strophodonta Striata	Hall, 1843

CRANIDÆ.

Crania Anna	Spencer, 1882, Niag. Foss.
Crania Siluriana	Hall
2 Crania—undescribed.	

DISCINIDÆ.

Discina tenuilamellata	Hall, 1852, Pal. N. Y., Vol. II.
“ clara	Spencer, 1882, Niag. Foss.

LINGULIDÆ.

Lingula ingens	Spencer, 1882, Niag. Foss.
--------------------------	----------------------------

<i>Genera and Species.</i>	<i>Authority and Reference.</i>
Lingula ingens oblonga.....	Conrad, 1839, Ann. Rep. N. Y.
" lamellata.....	Hall, 1852, Pal. N. Y., Vol. II.

LAMELLIBRANCHIATA.

Avicula emacerata.....	Conrad, 1849, Jour. Nat. Sc.
Pterinea brisa.....	Hall, 1867, 20th Rep., N. Y.
Posidonomya rhomboidea.....	Hall, 1852, Pal. N. Y., Vol. II.
Modiolopsis subulata.....	" " "
Avicula undata.....	
" subplana.....	

GASTEROPODA.

Platystoma Niagarensis.....	Hall, 1852
Loxonema leda.....	Hall, 1867, 20 Rep. N. Y.
Pleurotomaria clipeiformis.....	Spencer, 1882, Niag. Fossils
Platystoma plebea.....	Hall, 28th Rep. Pal. N. Y.
Pleurotomaria solarioides..	Hall, 1852, Pal. N. Y., Barton and Guelph
Murchisonia.....	3 species

PTEROPODA.

Conularia Niagarensis.....	Hall, 1852, Pal. N. Y., Vol. II.
" magnifica.....	Spencer, 1879, Can. Nat.
" rugosa.....	" 1852, Niag. Foss.

CEPHALOPODA.

Orthoceras virgatum.....	Sow., 1839, Murch. Sil. Syst.
" annulatum.....	Sow., 1839, Min. Conch.
" simulator.....	Hall, 1876, 28th Rep., Pal. N. Y.
" crebescens.....	" 1867, 20th, " "
" Bartonense.....	Spencer, 1882, Niag. Fossils
Cyrtoceras reversum.....	" " "
Lituites Niagarensis.....	" " "
Cyrtoceras.....	3 not determined yet

ANNELIDA.

Cornulitus flexuosus.....	Hall, 1852, Pal. N. Y., Vol. II.
" bellastrata.....	Hall
" species, allied to Styliola spica.....	"
" Species undetermined.....	

CRUSTACEA.

TRILOBATA.

Genera and Species.

Authority and Reference.

Illænus barriensis	Murch., 1838, Sil. Syst.
Encrinurus ornatus	Hall, 1852
Sphærexochus Vomingeri	Hall, 1867, 20th Rep., Pal. N. Y.
Calymene Blumenbachii	Brogniart, 1822, Nat. His.
Homalonotus delphinocephalus	Green, 1832
Dalmanites limulurus	" "
Lichas Boltoni	Bigsby, 1825, Jour. Nat. Sc.
Acidaspis Halli	Spencer, 1880, Niag. Foss.
Dalmania Verrucosa	Hall
Dalmania vigilans	
Acidaspis—3 species	

EURIPTERIDÆ.

Pterygotus Canadensis	Dawson, 1879, Can. Nat.
-----------------------	-------------------------

PLANTS.

Buthotrephis Granti	Dawson
Three others undescribed—two from Barton and one from Pentamerus bed, Hamilton.	

CLINTON FOSSILS, HAMILTON, ONT.

Genera and Species.

Reference.

Buthotrephis gracilis	Hall, Pal. N. Y., 1852
" var. crassa	" " " "
" var. palmata	" " " "
Roots, various Algæ	" " " "
Stromatopora Sp.	" " " "
Conophyllum Niagarensis	" " " "
Zaphrentis bilateralis	" " " "
Graptolithus Clintonensis	" " " "
Reteolites venosus	" " " "
Helopora fragilis	" " " "
Clathropora frondosa	" " " "
Polypora incepta	" " " "

<i>Genera and Species.</i>	<i>Reference.</i>
Retepora angulata.....	Hall, Pal. N. Y., 1852
Trematopora tuberculosa.....	“ “ “ “
Merista cylindrica.....	“ “ “ “
Athyris (Meristella) naviformis.....	“ “ “ “
Lingula oblata.....	“ “ “ “
Posidonia alata.....	“ “ “ “
Posidonomya rhomboidea.....	“ “ “ “
Platystoma Niagarensis.....	“ “ “ “
Orthoceras claratum.....	“ “ “ “
Oncoceras subrectum.....	“ “ “ “
Conularia Niagarensis.....	“ “ “ “
Tentaculites distans.....	“ “ “ “
Rusignites bilobatus.....	“ “ “ “
Monticulipora lycoperdon.....	Say 1847
Palæaster Granti.....	Spencer Niag. Fossils, 1847
Fenestella bicomis.....	“ “ “ “
Rhinopora vanosa.....	“ “ “ “
Eucalyptocrinus decorus.....	Phillips, 1839
Fenestella prisca.....	Lonsdale, 1839
Strophomena rhomboidalis.....	Wahlenberg, 1821
Orthis elegantula.....	Dolman, 1837
Lingula oblonga.....	Conrad, 1839
Ichnites—4 undetermined species.	
Arthropycus Harlani.	
Rusophycus (Hall) = Rusignitis (Dawson); Buthotrephis (Hall).	
Main stem absent (may be detached branches).	

STAR FISHES.

Two or three (if Prof. Elliott's proves to be a new species, as we think it is).

CYSTOIDÆA CRINOIDÆA.

A Cystid, recently sent to G. S. C., Ottawa.

A Crinoid, since obtained, not differing much from a Lower Silurian, one described by the late E. Billings (a new genus, perhaps).

It bears a close resemblance to another Crinoid (much smaller),

I sent to Prof. Billings many years since.

Glyptocrinus plumulosus.

GASTEROPODA.

Pleurotomaria—new species, probably—undescribed.
 Murchisonia—2 species—undescribed.

LAMELLIBRANCHIATA.

Tellinomya curta (Hall).
 “ elliptica (Hall).
 Pterinea brisa (Hall).

BRACHIOPODS.

Streptorynchus tenuis (Hall).
 Orthis calligramma var. Davidsoni (Hall).
 “ sp. (with finer Striæ), undescribed perhaps.
 Lingula perovata.
 “ new species (Hall); var. L. oblata (Dawson).
 Crania—undescribed, probably.
 Tentaculites neglectus (Nicholson).
 Ichnites—several described and figured by Dawson.
 Arthroclema—new species, probably.

MEDINA FOSSILS, HAMILTON, ONT.

Genera and Species.

Reference.

Arthropycus Harlani . . . Hall, 1853, Pal. N. Y., Vol. II. Locality
 Grimsby.
 Palæophycus species Hamilton and Grimsby
 Zaphrentis bilateralis . . . Hall, Pal. N. Y., Vol. II., 1852. Hamil-
 ton and Grimsby.
 Atrypa oblata Hall, 1852, Pal. N. Y., Vol. II. Hamilton
 and Grimsby.
 Modiolopsis orthonota . . Conrad, Ann. Report, N. Y., 1839. Hamilton
 “ species Dundas, Hamilton and Gri. sby
 Murchisonia subulata Conrad, 1842, Nat. Science Journal
 Hamilton.
 Murchisonia conoidea . . Hall, 1852, Pal. N. Y., Vol. II. Locality
 Hamilton and Grimsby.
 Pleurotomaria litorea . . . Hall, 1852, Pal. N. Y., Vol. II. Locality
 Hamilton and Grimsby.

*Genera and Species.**Reference.*

Pleurotomaria pervetusta	Conrad, 1838, Ann. Rep.	Locality Hamilton and Grimsby.
Ichnites (several species).		Hamilton and Grimsby.
Stromatopora species		Hamilton
Athyris "		"
Lingula cuneata	Conrad, 1839, Report N. Y.	
Modiolopsis primigena	" 1838,	"
Orthoceras species		Hamilton
Favosites Niagarensis (or closely allied)		"
Tentaculites, 2 species		"
Crinoid Stems.		
Halopea		Grimsby
Six or seven Fucuoids, (Hamilton), omitted in Spencer's list; also some undescribed Bucannella trilobata—	Conrad, 1838, Ann. Rep., N. Y.	

NOTE.—Since the catalogues of local fossils were prepared, Dr. Jas. Hall, Director-general of the New York State Survey, has figured and described "Lingulops Granti," Niagara beds, and "Lingula Lingulata," Clinton, from Hamilton, Ont., Silurian rocks. A few others, also, were lately obtained, not yet named.

Locality

Hamilton

"

Port N. Y.

"

Hamilton

"

"

. Grimsby

list; also

38, Ann.

Jas. Hall,

described

nton, from

obtained, not

