

**CIHM
Microfiche
Series
(Monographs)**

**ICMH
Collection de
microfiches
(monographies)**



Canadian Institute for Historical Microreproductions / Institut canadien de microreproductions historiques

© 1998

Technical and Bibliographic Notes / Notes techniques et bibliographiques

The Institute has attempted to obtain the best original copy available for filming. Features of this copy which may be bibliographically unique, which may alter any of the images in the reproduction, or which may significantly change the usual method of filming are checked below.

- Coloured covers / Couverture de couleur
- Covers damaged / Couverture endommagée
- Covers restored and/or laminated / Couverture restaurée et/ou pelliculée
- Cover title missing / Le titre de couverture manque
- Coloured maps / Cartes géographiques en couleur
- Coloured ink (i.e. other than blue or black) / Encre de couleur (i.e. autre que bleue ou noire)
- Coloured plates and/or illustrations / Planches et/ou illustrations en couleur
- Bound with other material / Relié avec d'autres documents
- Only edition available / Seule édition disponible
- Tight binding may cause shadows or distortion along interior margin / La reliure serrée peut causer de l'ombre ou de la distorsion le long de la marge intérieure.
- Blank leaves added during restorations may appear within the text. Whenever possible, these have been omitted from filming / Il se peut que certaines pages blanches ajoutées lors d'une restauration apparaissent dans le texte, mais, lorsque cela était possible, ces pages n'ont pas été filmées.
- Additional comments / Commentaires supplémentaires:

L'Institut a microfilmé le meilleur exemplaire qu'il lui a été possible de se procurer. Les détails de cet exemplaire qui sont peut-être uniques du point de vue bibliographique, qui peuvent modifier une image reproduite, ou qui peuvent exiger une modification dans la méthode normale de filmage sont indiqués ci-dessous.

- Coloured pages / Pages de couleur
- Pages damaged / Pages endommagées
- Pages restored and/or laminated / Pages restaurées et/ou pelliculées
- Pages discoloured, stained or foxed / Pages décolorées, tachetées ou piquées
- Pages detached / Pages détachées
- Showthrough / Transparence
- Quality of print varies / Qualité inégale de l'impression
- Includes supplementary material / Comprend du matériel supplémentaire
- Pages wholly or partially obscured by errata slip, tissues, etc., have been refilmed to ensure the best possible image / Les pages totalement ou partiellement obscurcies par un feuillet d'errata, une pelure, etc., ont été filmées à nouveau de façon à obtenir la meilleure image possible.
- Opposing pages with varying colouration or discolourations are filmed twice to ensure the best possible image / Les pages s'opposant ayant des colorations variables ou des décolorations sont filmées deux fois afin d'obtenir la meilleure image possible.

This item is filmed at the reduction ratio checked below /
Ce document est filmé au taux de réduction indiqué ci-dessous.

| | | | | | | | | | | |
|--------------------------|--------------------------|--------------------------|--------------------------|--------------------------|--------------------------|-------------------------------------|--------------------------|--------------------------|--------------------------|--------------------------|
| 10x | | 14x | | 18x | | 22x | | 26x | | 30x |
| <input type="checkbox"/> | <input type="checkbox"/> | <input type="checkbox"/> | <input type="checkbox"/> | <input type="checkbox"/> | <input type="checkbox"/> | <input checked="" type="checkbox"/> | <input type="checkbox"/> | <input type="checkbox"/> | <input type="checkbox"/> | <input type="checkbox"/> |
| | 12x | | 16x | | 20x | | 24x | | 28x | 32x |

The copy filmed here has been reproduced thanks to the generosity of:

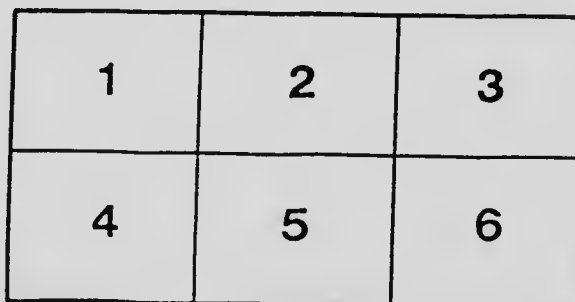
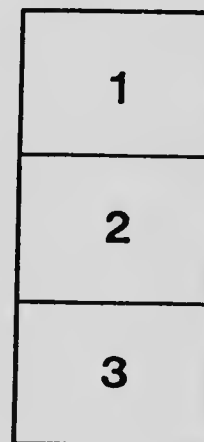
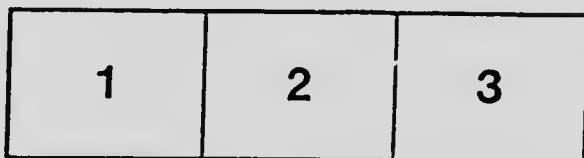
Legislative Library
Victoria

The images appearing here are the best quality possible considering the condition and legibility of the original copy and in keeping with the filming contract specifications.

Original copies in printed paper covers are filmed beginning with the front cover and ending on the last page with a printed or illustrated impression, or the back cover when appropriate. All other original copies are filmed beginning on the first page with a printed or illustrated impression, and ending on the last page with a printed or illustrated impression.

The last recorded frame on each microfiche shall contain the symbol \rightarrow (meaning "CONTINUED"), or the symbol ∇ (meaning "END"), whichever applies.

Maps, plates, charts, etc., may be filmed at different reduction ratios. Those too large to be entirely included in one exposure are filmed beginning in the upper left hand corner, left to right and top to bottom, as many frames as required. The following diagrams illustrate the method:



L'exemplaire filmé fut reproduit grâce à la générosité de:

Legislative Library
Victoria

Les images suivantes ont été reproduites avec le plus grand soin, compte tenu de la condition et de la netteté de l'exemplaire filmé, et en conformité avec les conditions du contrat de filmage.

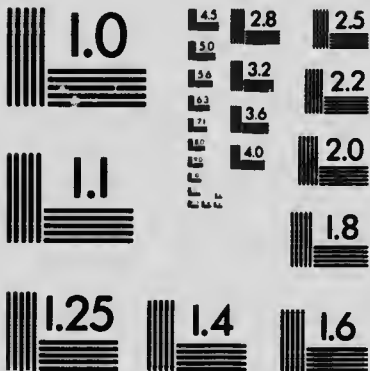
Les exemplaires originaux dont la couverture en papier est imprimée sont filmés en commençant par le premier plat et en terminant soit par la dernière page qui comporte une empreinte d'impression ou d'illustration, soit par le second plat, selon le cas. Tous les autres exemplaires originaux sont filmés en commençant par la première page qui comporte une empreinte d'impression ou d'illustration et en terminant par la dernière page qui comporte une telle empreinte.

Un des symboles suivants apparaîtra sur la dernière image de chaque microfiche, selon le cas: le symbole \rightarrow signifie "A SUIVRE", le symbole ∇ signifie "FIN".

Les cartes, planches, tableaux, etc., peuvent être filmés à des taux de réduction différents. Lorsque le document est trop grand pour être reproduit en un seul cliché, il est filmé à partir de l'angle supérieur gauche, de gauche à droite, et de haut en bas, en prenant le nombre d'images nécessaire. Les diagrammes suivants illustrent la méthode.

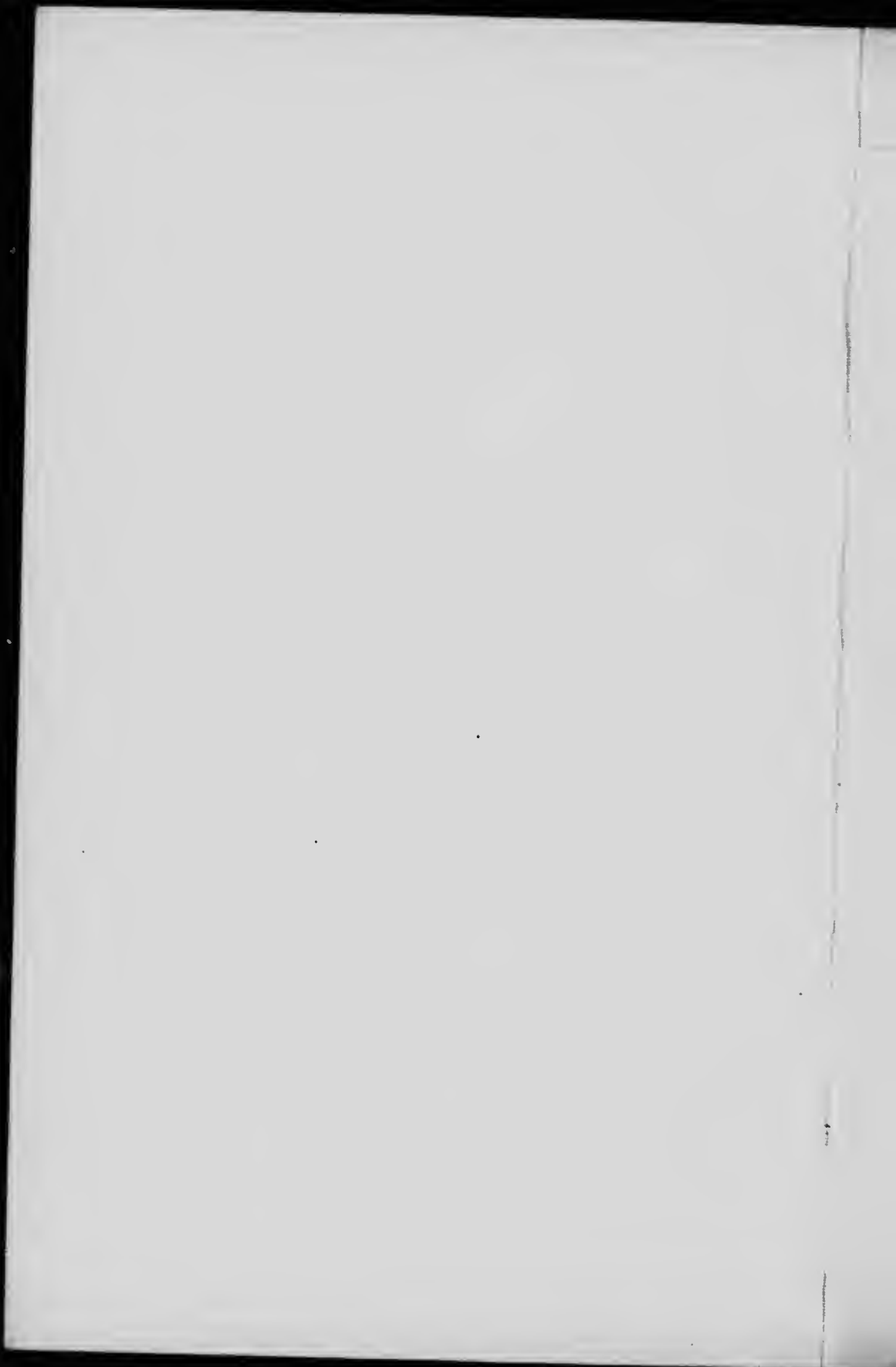
MICROCOPY RESOLUTION TEST CHART

(ANSI and ISO TEST CHART No. 2)



APPLIED IMAGE Inc

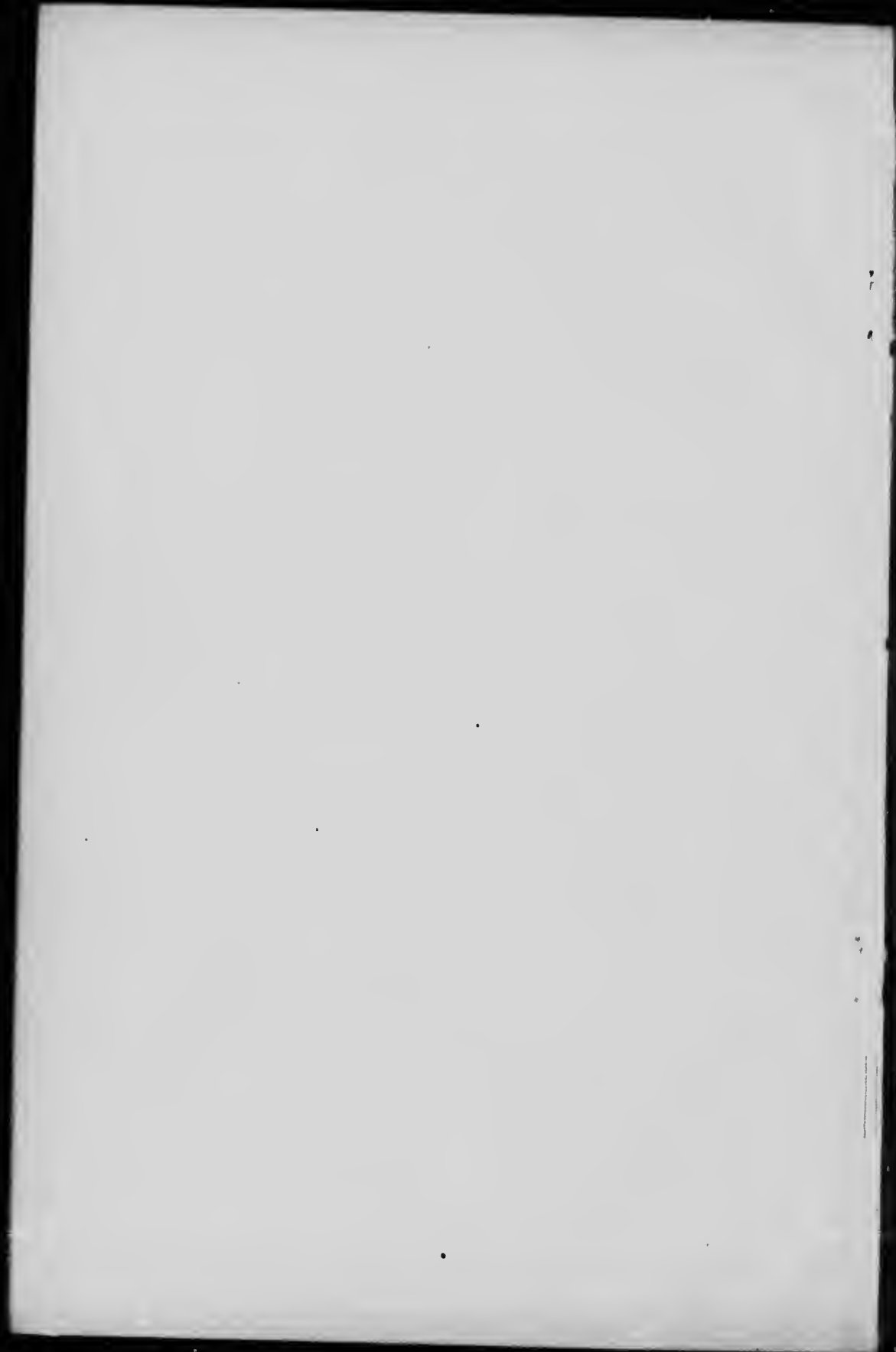
1653 East Main Street
Rochester, New York 14609 USA
(716) 482 - 0300 - Phone
(716) 288 - 5989 - Fax



82
3869
3

ERRATUM.

Special Prize No. 112, Page 64, should appear under the heading "By F. J. Fulton, Esq., M.P.P., Kamloops."





VIEW OF THE CITY OF KAMLOOPS.

**PROVINCIAL LIBRARY
VICTORIA, B.C.**

630.6
k15
1901

KAMLOOPS

IS the leading city of the interior of British Columbia. It is a divisional point on the main line of the Canadian Pacific Railway, two hundred and fifty miles east of Vancouver. The city is beautifully situated on the banks of the Thompson River. The North Fork of the Thompson comes down from the mountains two hundred miles northward, and here joins the main river. It is a lovely spot, whose dry invigorating climate makes it a health resort unequalled by any place in Canada. The broad valleys intersect at right angles. There is a background of bordering hills, and fine groves line both banks of the rivers. The triangular space between the rivers, opposite Kamloops, is an Indian reservation, overlooked by St. Paul's Mountain. Just below the city the Thompson River widens out into Kamloops Lake, a broad, beautiful hill-girt sheet of water. Both rivers are navigable for over one hundred and fifty miles, and large steamers ply thereon. Ranching is extensively carried on in the immediate district, and Kamloops is the supply point for a large region to the north and south. Thousands of cattle are shipped annually from here. The soil is very rich and will grow anything, short of tropical fruit, to perfection. As the rainfall is very light farming is carried on by means of irrigation, and this year the Kamloops Irrigation and Power Company intend spending \$150,000.00 in building dams and flues so as to transmit power and water from Jamieson and Tranquille Creeks to the city and surrounding district. Kamloops owns its own electric light and water works, and is about to have a most efficient sewerage system. It is possessed of splendid educational advantages—both public and private schools. Kamloops is the capital of Yale district, and the Provincial Government Offices, the Provincial Home for Old Men, the Jail, the Court House, the Provincial Registry Office, and the Dominion Land Office, the Customs House and Inland Revenue Office are located here. There is also a brewery, tannery, cigar factory, saw mill and many fine churches, stores, etc. It is expected that the new Hotel Cecil will be completed in time for the Exposition. Kamloops is to be the starting point of the much talked of railway to Cariboo. There is excellent fishing and hunting close to the city. The Vernon and Nelson Telephone Company has a large local exchange here, and a 60 mile long distance line has recently been built to Nicola. With its great natural advantages Kamloops is bound to be one of the largest cities in the Province. Population, 2,500.

Kamloops is the central point of a number of rapidly rising mining camps, and is the outfitting and supply point for the mining camps on the North and South Thompson River, Kamloops Lake, Shuswap Lakes, Mamette Lake, Nicola, Aspen Grove and the Similkameen. Its position at the junction of the North and South fork of the Thompson River brings within its influence an area of mineral bearing country far exceeding any other city in B. C. In the immediate vicinity of the town a number of rich mines are being developed on what is known as the Coal Hill copper-gold belt. The best known of these are the Iron Mask, Lucky Strike, Kimberley, Python, Truth, Pothook, Wheel Tamar, Copper King and Tenderfoot. Occasional shipments are being made from these and valuable bodies of ore are now known proved to a depth of 300 feet.

Do You Ever Stop To Think?

That before you go shopping you should know what you want and where to go for it. Consider what you want at a Drug Store, or any fancy goods, and then look over our list of goods.

Drugs, Patent Medicines, Etc. Tooth Brushes, Hair Brushes, Etc. All kinds of Rubber Goods. Purses. Fine Confectionery. Kodaks and Photographic Sundries. Cut Glassware. Dressing Cases. Cigars, Cigarettes, Tobacco and Pipes.

EVERYTHING KEPT IN A WELL EQUIPPED PHARMACY.

KAMLOOPS DRUG CO., W. E. Law, Manager.

Grand Pacific

Hotel,

Lansdowne St., Kamloops, B.C.

FIRST-CLASS IN EVERY RESPECT.

SAMPLE ROOM AND STABLE IN CONNECTION.

P. A. BARNHART, Prop.

The copper-gold ores of this belt are shown, by the results of shipments from the different properties, to be an exceptionally favorable character for cheap smelting, and are much sought after by the smelters. The cost of transportation, however, militates against extensive shipping, especially as Kamloops Lake affords sites for smelters as advantageous as any in British Columbia. The North and South fork of the Thompson River, each navigable for over 150 miles through a mineral bearing country, bring within water carriage almost every class of smelting ore, fuel, and fluxes needed. Two sites have already been purchased by mining companies, and the industry once started it must rapidly assume immense proportions. A large amount of magnetic iron ore has been shipped from the Glen Iron mine, on Kamloops Lake, during the past ten years, to Kootenay and Washington smelters for fluxing purposes, and the fact that the Hall Mining & Smelting Co. of Nelson, B.C., have leased the mine for three years, is an indication of the advantages this district possesses over many already established smelting centres.

The varied mineral resources of this district are sufficiently indicated by the following occurrences on all of which sufficient work has been done to prove them of permanent interest and value.

Silver-lead, copper and gold ores on the South Thompson and Shuswap Lakes.

Silver-lead, gold and copper ores, as well as deposits of good coking coal on the North Thompson River.

Copper-gold ores south of Kamloops, and copper-gold ores and large deposits of cinnibar on Kamloops Lake.

On the North Thompson River a new industry is springing up which promises to grow into large proportions, that of gold dredging. This river and many streams entering into it are known to be gold bearing over their whole course. An immense dredger, built on the New Zealand type, costing \$50,000, is now ready for operation on the river, 15 miles north of the city. A large number of New Zealand dredging experts have been attracted here, and they all agree that the amount of gold in the gravel, and the favorable character of the stream, should assure the most profitable success of this venture.

J. T. ROBINSON, Member Inland Board of Trade. KAMLOOPS, B.C.

*Commission Merchant, Financial, Real Estate,
Mining and Insurance Broker.*

MONEY TO LOAN— On long or short terms at lowest rate of interest.

Resident Agent For

Canada Life Assurance Company.
Anglo-American Fire Insurance Company.
The British Columbia Manufacturing Co. of New Westminster.
Cowan & Co., Engine and Machine Manufacturers, of Galt, Ont.
Also for several leading Manufacturers of Mining Machinery.

Farms For Sale or To Lease.

Houses To Rent or For Sale.

Twenty Vacant Lots For Sale in Kamloops.

Mining Properties and Mining Stocks Bought and Sold.

| | | | | |
|-----------------------------|----------------|--------------------------|--------------------|-------------------------|
| Rents Collected. | Estates | Notes Discounted. | Rail- | Valuations and Arbitra- |
| Managed. | Money advanced | way, Govt. and Municipal | tions Attended to. | |
| on Life Insurance Policies. | | Bonds bought and sold. | | |

Farm Produce Handled on Commission. Orders Executed on Toronto, Montreal, New York and Chicago Stock Exchanges. Agent for the Steamer "Ethel Ross."

Correspondence Solicited.

Address P.O. Box 28, Kamloops, B.C.

Hardy Canadian Grown
Nursery

Stock -

We are extensive growers of all lines of

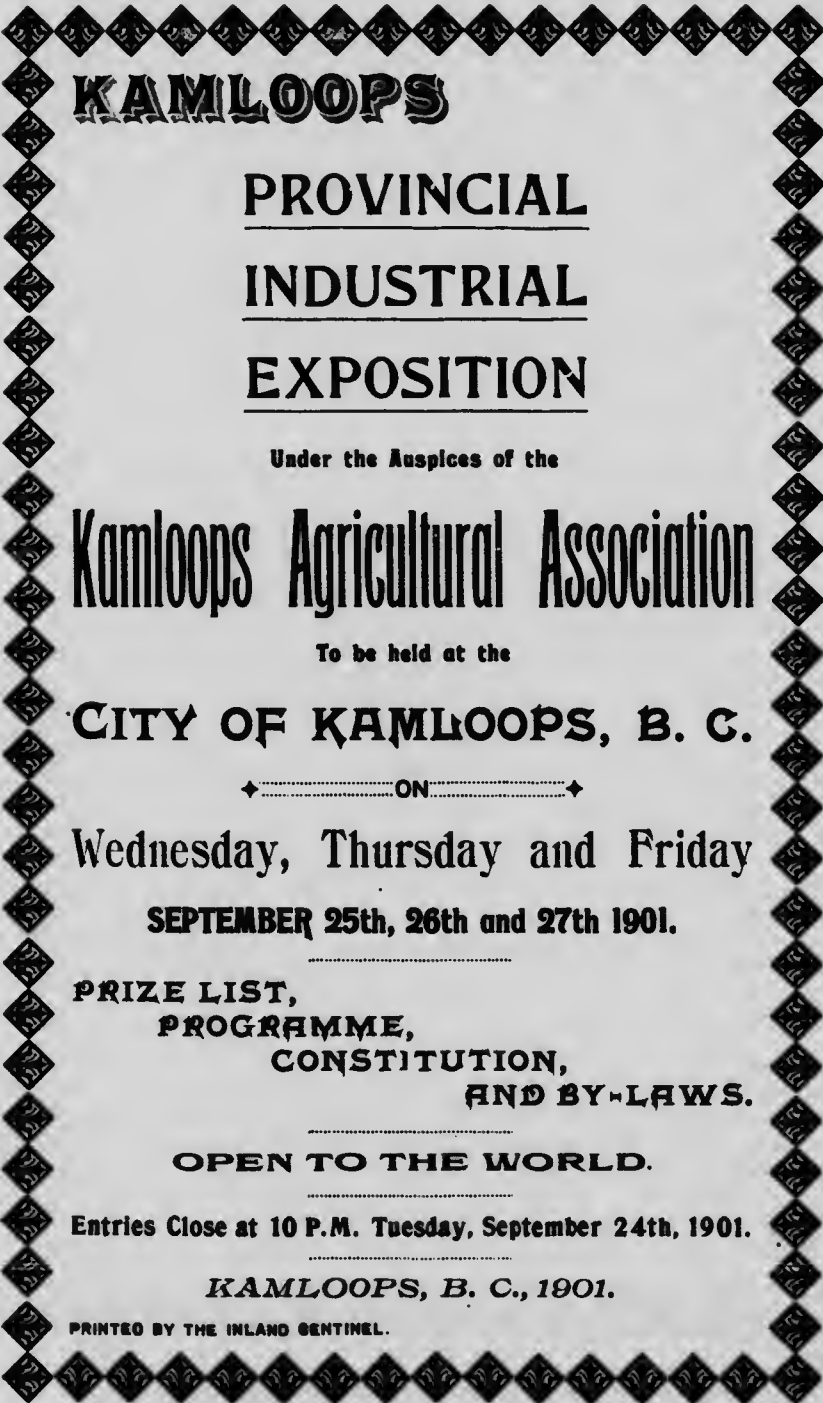
Fruit and Ornamental Trees,
Small Fruits, Hedge Plants,
Rose Bushes, Climbing Vines,
Etc., Etc.

And Guarantee All Our Stock true to name.

A Most Complete List Suitable for B. C.

☞ Our Local Representative is Mr. Jos. McGee, of Kamloops. Look over his list and get his prices before placing your order.

E. P. BLACKFORD & CO.
Nurserymen, Toronto.



KAMLOOPS

PROVINCIAL

INDUSTRIAL

EXPOSITION

Under the Auspices of the

Kamloops Agricultural Association

To be held at the

CITY OF KAMLOOPS, B. C.

◆.....ON.....◆

Wednesday, Thursday and Friday

SEPTEMBER 25th, 26th and 27th 1901.

PRIZE LIST,
PROGRAMME,
CONSTITUTION,
AND BY-LAWS.

OPEN TO THE WORLD.

Entries Close at 10 P.M. Tuesday, September 24th, 1901.

KAMLOOPS, B. C., 1901.

PRINTED BY THE INLAND SENTINEL.

KAMLOOPS

Agricultural Association.

OFFICERS AND DIRECTORS, 1901.

| | | |
|---------------------|---------------------------|----------------|
| | PRESIDENT. | |
| W. J. ROPER..... | | KAMLOOPS |
| | VICE-PRESIDENTS. | |
| J. P. SHAW.. | | SHUSWAP |
| A. NOBLE..... | | NORTH RIVER |
| | SECRETARY. | |
| J. T. ROBINSON..... | | KAMLOOPS |
| | TREASURER. | |
| J. R. HULL..... | | KAMLOOPS |
| | DIRECTORS. | |
| JAMES MELLORS..... | | KAMLOOPS |
| E. STUART WOOD..... | | KAMLOOPS |
| F. J. DEANE | | KAMLOOPS |
| P. A. BARNHART..... | | KAMLOOPS |
| J. R. MICHELL..... | | KAMLOOPS |
| J. M. HARPER..... | | KAMLOOPS |
| JAS. VAIR | | KAMLOOPS |
| JAMES AIRD..... | | ROCKFORD |
| J. B. GREAVES..... | | DOUGLAS LAKE |
| W. W. SHAW..... | | NORTH THOMPSON |
| T. W. GRAHAM..... | | SHUSWAP |
| A. DUCK..... | | DUCKS |
| W. FORTUNE..... | | TRANQUILLE |
| P. OWENS..... | | SALMON ARM |
| W. U. HOMFRAY..... | | GRAND PRAIRIE |
| | FINANCE COMMITTEE. | |
| J. M. HARPER..... | | KAMLOOPS |
| J. R. MICHELL..... | | KAMLOOPS |
| J. T. ROBINSON..... | | KAMLOOPS |

P. BURNS & CO.

Meat Merchants

AND

Dealers in Live Stock.

Abattoir and Cold Storage at Calgary, Alberta.
Cold Storage Plants at Nelson
and Vancouver, B. C.

WHOLESALE MARKETS AT

| | | |
|------------|--------------|-------------|
| Nelson, | Rossland, | Sandon, |
| Greenwood, | Vancouver, | Revelstoke, |
| | White Horse, | Dawson. |

RETAIL MARKETS AT

Nelson, Ymir, Ainsworth, Kaslo, Sandon, New
Denver, Silverton, Trail, Rossland, Greenwood,
Grand Forks, Midway, Phoenix, Eholt, Columbia,
Cascade City, Revelstoke, Ferguson, Trout Lake,
Nakusp, Vancouver, Bennett, Atlin, White Horse
and Dawson City.

Hudson's Bay Co.

Special Values in

**Dry Goods, Clothing,
Men's Furnishings, Boots and Shoes.**

Close Prices in

Groceries and Provisions.

Choice Stock in

Liquors and Cigars.

**Hudson's Bay Company,
Kamloops, B. C.**

THE - FONTHILL - NURSERIES.

CANADA'S GREATEST NURSERIES. OVER 800 ACRES.

All the choicest Fruits, Flowers, Shrubs and Ornaments may be found at our extensive Nurseries. Special stock and special packing grounds for early shipments for British Columbia. We defy competition in quality or price.

Agents Wanted. Expenses Guaranteed. Liberal Salary or Commission.

Send for handsome illustrated catalogue, free. We have made a study of the wants of our patrons on the Coast and are prepared to meet their requirements. We are not "jobbers," but grow our own stock. Good stock, worth planting, cannot be had at better rates than we quote. We pay freight. All stock guaranteed.

Stone & Wellington, Toronto, Ont.

~~~~~~CONSTITUTION~~~~~

ARTICLE I.

Constituted into an Association by virtue of the "Agricultural Societies' Incorporation Act, 1873," and amending acts, under the name of the "Kamloops Agricultural Association."

ARTICLE II.

The purpose of this Association shall be to protect and advance agricultural and industrial interests in the inland districts of British Columbia.

ARTICLE III.

The officers of this Association shall consist of a President, two Vice-Presidents, Secretary and Treasurer, who, together with fifteen members to be elected at an annual meeting; of the Association, shall constitute a Board of Managers, and shall hold office from the 1st day of January to the 31st day of December in every year. At a meeting of the Managers five members shall constitute a quorum to transact business.

ARTICLE IV.

The President shall preside at all meetings of the Association and shall, at the written request of three members of the Board of Managers, call special meetings; shall appoint sub-committees; shall vote only at the election of officers, and in case of a tie; and sign all financial and official documents or papers emanating from the Secretary, and not otherwise provided for; and have a general supervision of all matters pertaining to the interests of the Association and its Fairs. In the absence of the President and Vice-Presidents the Association may choose a chairman *viva voce*, unless voting by ballot be requested by two or more members.

ARTICLE V.

The Secretary shall conduct the correspondence of the Association, holding the same free to any member of the Association at any regular meeting of the same, and shall perform such other duties as shall from time to time be prescribed by the Board of Managers or the President.

ARTICLE VI.

The Treasurer shall give his receipts for all monies received, and shall pay all accounts against the Association when allowed by the Board of Managers or the President.

ARTICLE VII.

The Board of Managers shall have the general financial management of the affairs of the Association in the interim of annual meeting. They shall fill vacancies occurring between elections, and make the necessary arrangements and preparations for all meetings, Fairs and Exhibitions. The Board shall have power to make by-laws (not inconsistent with this constitution) and arrange time and place of holding its own meetings.

ARTICLE VIII.

The names of the members shall be registered in a book kept by the Secretary for that purpose; and the annual fee of membership shall be three dollars, which shall entitle members to compete for any prize

of the Association free of charge; also to free access to the exhibition at all times for himself and wife and members of his family under 16 years of age. Single membership tickets will be issued at \$2.00, entitling the holder to compete for the Association's prizes free of charge, and free access to the grounds at any time.

ARTICLE IX.

The admission fees to the grounds shall be as follows: Children under 12, free; 12 to 18, 25 cents; over 18, 50 cents.

ARTICLE X.

Any member of this Association shall be eligible to office, entitled to vote, and have free admission to all the exhibitions of the Association.

ARTICLE XI.

The Association shall hold an Annual Fair and Cattle Show at Kamloops.

ARTICLE XII.

The annual meeting for the election of officers and the transaction of the usual business of the Association shall be held on the second day of the Exhibition at 10 o'clock a.m.

ARTICLE XIII.

The Board of Managers shall fix a date in each year on which accounts of the Association shall be brought before them.

ARTICLE XIV.

Special meetings shall be called by the Association by giving notice in two consecutive issues of a paper published in Kamloops, upon a request signed by at least five members.

ARTICLE XV.

At any meeting of the Association 10 members shall form a quorum.

ARTICLE XVI.

All amendments to this constitution shall be presented in writing at an annual meeting, when if agreed to by two-thirds of the members present they shall be adopted.



Office Stationery and Supplies Our Specialty

Wanted—Everybody to know that we carry the largest and best assorted stock of Books, Stationery, Fancy Goods, Toys, School Supplies, Musical Instruments, Sporting Goods, Fishing Tackle and Photographic Supplies that can be found in the Interior of B. C. Our prices will be found right; give us a trial.

SMITH BROS., Booksellers and Stationers, Kamloops and
Vernon.

THE ANGLO-AMERICAN FIRE INSURANCE CO.

Is not in the Combine.

Before effecting your Fire Insurance get our rates. We can save you money. It will pay you to investigate.

J. T. ROBINSON, Agent, Kamloops.

**Seeds, Trees, Small Fruits
and General Nursery Stock.**

Bee Supplies. Fertilizers. Agricultural Implements.

Close Prices. No Agents. Catalogue Free.

**M. J. Henry's Nurseries and Greenhouses,
Vancouver, B.C.**

J. H. MacPherson, Main Street,
Kamloops.

Merchant Tailor.

A Full Line of

Foreign and Domestic Cloths

Constantly in Stock.

Cleaning, pressing and repairing promptly attended to.

Cosmopolitan Hotel,

KAMLOOPS, B.C.

Large central sample room. Comfortable rooms. Good stabling. Rates—\$1 to \$2.50 per day. Horse corral in connection.

J. T. EDWARDS, Prop'r.

Imperial Brewing Co., Ltd.

KAMLOOPS, B.C.

Manufacturers of

**Lager Beer, Soda Water, Ginger Beer,
Ginger Ale and other Aerated Waters.**

Our Beer has now made a name for itself as the best article on the market, and contains nothing but the best Malt and Hops the market affords. Just the thing for family use. All orders by mail or otherwise promptly attended to.

Give Us a Trial. We Guarantee Satisfaction.

GEORGE BRUDER, Manager.

GENERAL RULES AND REGULATIONS.

Exhibitors will please read the following rules carefully and send in their entries as early as possible, and be sure that all fees or membership subscriptions accompany the same.

On Monday and Tuesday, September 23rd and 24th, the grounds and buildings will be open to exhibitors and their assistants from 9 a.m. to 10 p.m. These are preparation days and all exhibits required to be on the grounds the full term of the Exhibition must be placed and ready for exhibition by 10 p.m. on Tuesday, September 24th.

The Exhibition will open to the public on Wednesday, September 25th, at 2 p.m., and will continue open every day from 1 p.m. to 6 p.m. until Friday, September 27th.

The Exhibition will be officially closed at 5 p.m. on Friday, September 27th, after which exhibitors may move all their property from the grounds and buildings.

No removals will, under any circumstances, be allowed before 5 p.m. on Friday, September 27th.

Necessary attendants upon stock and machinery will be furnished with special passes on applying at the Secretary's office on the ground.

These passes will bear the name of the person to whom they are issued, and if presented by any other person will be forfeited.

Any more than one attendant's ticket will not be issued to any exhibitor, except in the case of live stock or machinery which may require extra attendants. As these tickets are positively not transferable under any circumstances, exhibitors who may desire to change their attendants must have their tickets exchanged at the office, for which a charge of 50 cents will be made. The names of all attendants must be written on the tickets, and no ticket will be accepted at the gates unless the name of such attendant has been written thereon in ink. Attendants' tickets will only be good at the attendants' gate.

The entry tickets upon animals and articles will admit the person bringing them to the show ground for exhibition, when accompanying such articles or animals on their first entering, without the use of any other ticket; but afterwards such person must be provided with the regular pass as above or he will have to pay the regular admission fee.

Judges and members of the Press will be furnished with badges, this being intended only as a means of showing their official connection with the Exhibition, and not for the purpose of securing admission to the grounds.

ENTRIES.

All entries must be made on the printed forms accompanying the prize lists.

The forms are to be filled up and signed by the exhibitor and sent to the secretary of the Association at Kamloops on or before 10 p.m. on Tuesday, September 24th, and no entries will be received after this date under any consideration.

Members of the Association are entitled to free entries and admission to the grounds.

Articles of work or specimens which have been awarded prizes at

any previous Exhibition of this Association cannot be entered in competition for the prizes named in the prize list for this year.

Exhibitors will please take notice that it is absolutely required that the entries be made on or before the date mentioned, in order to afford sufficient time to examine the entry papers, to forward the entry tickets and to correspond with parties when necessary, and for the correction of errors and omissions.

In the Horse, Cattle, Sheep, Pig and Poultry Classes, the entry must, in every instance, be made in the name of the bona-fide owner, and unless this rule be observed, no premium will be awarded; or, if awarded, will be withheld. If any person shall exhibit an animal or bird of which he is not the bona-fide owner, he will forfeit any premium which may be awarded him.

In all other classes entries must be made in the name of the producers or manufacturers only, and by such producers themselves or a person or their agent, who must have special authority for doing so, and shall produce the authority in writing if so required by the Judges. Those who are not manufacturers or authorized agents may exhibit but cannot compete for the prizes offered. If any person other than the authorized agent shall enter an article for competition as produced or manufactured by himself, when it has not really been so, he shall forfeit any premium which may have been awarded the article.

A merchant who sells a line of goods which are also sold by other merchants cannot be considered as the agent for such goods.

No person will be allowed to enter for competition more than one specimen in any one class of a division, unless the additional article be of distinct named variety or pattern from the first. This rule not to apply to animals, but to all kinds of grain, vegetable produce, fruit, manufactured articles, etc., to which each additional specimen would necessarily be precisely similar to the first.

Every article must be entered under some one of the headings in the regular list when possible, but if any article is of distinct character from anything specified in the list, it may be entered in the class with which it most clearly corresponds.

On the entry of each animal or article, a card will be furnished the exhibitor, specifying the class, the division, and the number of the entry, which card must remain attached to the animal or article during the Exhibition.

In all cases the right is reserved to reject entirely or accept conditionally any entry or application, and under no circumstances will articles which are offensive by reason of their odor or appearance, or which are dangerous by reason of their explosive character, be admitted; and if any such be introduced by an exhibitor through misapprehension or otherwise, they may be removed by order of the Board of Directors.

Exhibitors shall, if required by the Directors, make a statutory declaration that the articles exhibited by them are exhibited in accordance with the rules and regulations of the Society; and in case any exhibitor refus to make such declaration on being requested so to do all premiums awarded him, her, or them shall be forfeited.

For the exhibition of all classes of manufactures, applications for space should be made to the Secretary as soon as possible, as this year it is expected that the capacity of the buildings will be taxed to their utmost.

The entrance fees shall be as follows:

| | |
|---|-------|
| For cattle, sheep, horses and pigs..... | \$ 50 |
| Agricultural implements..... | 1 00 |
| Field produce..... | 50 |
| Dairy produce..... | 50 |
| Fruits..... | 25 |
| Vegetables..... | 25 |

PUREST AND BEST.

Windsor Salt.

Always Gives Satisfaction
And Costs no More Than
Inferior Brands.

TABLE SALT.

DAIRY SALT.

CHEESE SALT.

ORDINARY FINE SALT.

For Sale by all Grocers.

THE WINDSOR SALT COMPANY, LIMITED.

Windsor, : : Ontario.

Special and other entries, 50 cents, except for ladies and children, 25 cents.

There are no extra charges for space except in special cases where extra advantages for advertising purposes have been applied for.

On and after Monday, September 23rd, exhibitors, their agents and workmen will be admitted to the grounds and buildings for the purpose of making preparatory structures, or getting the machinery or implements into position. These structures must be completed by 10 p.m. on Tuesday, September 24th.

All exhibits must be delivered on the grounds and placed in position by 10 p.m. on Tuesday, September 24th, except live stock, which must be on the ground by 9 a.m. on Wednesday, September 25th.

As it is fully intended to have the Exhibition open to the public at the time named, exhibitors are specially notified that articles or animals arriving after the above dates will not be allowed to compete. Exhibitors of machinery and other heavy articles are expected to have them on the grounds and placed in position the day preceding the opening of the Exhibition.

All boxes, wrappings, and other packing material must be cleared away, and everything in proper order before 10 p.m. on Tuesday, September 24th.

Exhibitors must see to it that their articles are properly unpacked and delivered to the superintendent of the department to which they belong, or his authorized agent. Exhibitors must provide for the delivery of their articles upon the Exhibition grounds. The Association cannot, in any case, make provision for their transportation or be subject to any expense therefor, either on their delivery at, or return from, the ground. All expenses connected therewith must be provided for by the exhibitors, and all express or cartage charges must have been prepaid.

Exhibitors, on arriving with their articles, will apply at the office of the Secretary, where they will be informed where the articles are to be placed.

Exhibitors will at all times give the necessary personal attention to whatever they have on exhibition, and at the close take entire charge of the same.

Exhibitors of animals, machinery in motion, and other exhibits, liable to occasion accidents, injury, or damage to persons coming in contact with them, shall guard their exhibits and protect the public from coming in contact therewith, and every such exhibitor shall indemnify the Association from and against all claims and demands, costs, charges, and expense, which it may incur, suffer, or be put to by reason of any accident, or of any person being injured or suffering damage through or by reason of any such exhibit not being properly guarded, or the public not being properly protected therefrom.

Articles placed on exhibition must not be removed until the dates above mentioned.

Every facility will be afforded for the transaction of business by taking orders, but no delivery of articles sold can be made on the premises during the Exhibition.

The Association will take reasonable precaution to insure the safety of articles sent to the Exhibition, but the owners themselves must take the risk of exhibiting them, and should any article be accidentally injured, lost, or stolen, the Association will give all the assistance in their power towards the recovery of the same, but will not make any payment for the value thereof.

At the close of the Exhibition exhibitors must remove their exhibits as early as possible. Any article or stand left in the buildings or grounds after this time will be at the risk of the owner.

Horses must be shown uncovered and in such a manner as judges may require or allow, and if exhibitors refuse to submit to the proper

THE KAMLOOPS PROVINCIAL INDUSTRIAL EXPOSITION

will open with a blaze of glory on

WEDNESDAY, SEPTEMBER 25th, 1901

AT 2 P. M.

Horse Races,
Pony Races,
Hurdle Races,
Steeplechase Races,
Cowboy Races,
Indian Races,
Klutchman Races,
Dog Races,
Bicycle Races,
Foot Races,

Military Events,
Football Matches,
Lacrosse Matches,
Baseball Matches,
Children's Events,
Parade of Live Stock,
Athletic Sports,
Tag-of-War,
Firemen's Contests,
Horse Jumping Contests.

The Greatest Carnival of Attractions
Ever Presented in British Columbia.

Banquets, Balls and Concerts.

Brilliant Illumination of the City and Display of Fireworks.

SEVERAL BANDS OF MUSIC. :-: ARCHES AND DECORATIONS.

Everything to Please the Eye and Make Glad the Heart.

SEE OTHER SIDE.

The Fastest and Best
Half-Mile Track on
the Pacific Coast.

The Latest and Most
Up-to-Date Exhibition
Buildings.

Everything New.

New Name,
New Grounds,
New Race Track,
New Buildings,
New Bridge,
New Attractions,
New Prizes.

Excellent Stabling on the
Grounds for Race Horses.

This Track Will be the
Training Centre for Pacific
Coast Horses.

**REDUCED PASSENGER AND FREIGHT RATES ON
ALL RAILWAYS AND STEAMBOATS.**

See posters and programmes for full list
of races and attractions. For full particulars
write to

**J. T. ROBINSON, SECRETARY,
Kamloops, B. C.**

The Brunette
Saw Mill Company,
Limited.

Sapperton, B.C.

**All kinds of Fruit Boxes and
Crates. Prompt shipment.**

The Inland Sentinel,
Kamloops, B.C.

Established over twenty years. Most widely circulated newspaper in the Interior of British Columbia.

Published Tuesday and Friday, - - \$2 per Annum.

OUR 

JOB PRINTING DEPARTMENT

Is second to none in the Province. Every description of Commercial Printing executed by skilled men at reasonable prices.

Telephone 27.

P.O. Box 74.

requirements of the judges their animals will be ruled out, but exhibitors will have the privilege of showing their animals in harness, to bridle or under saddle as they may prefer.

All animals competing for prizes must be brought for the inspection of the judges or for exhibition whenever called out by the official appointed to attend to that duty.

Exhibitors who desire to take their animals home at night will be allowed to do so on depositing \$5 with the Secretary as a guarantee for the return of the animal next morning. If the animal is not returned by 9 o'clock next morning the amount deposited will be forfeited to the Association.

Any exhibitor lodging a protest must make it in writing, and it must be delivered to the Secretary or his assistant within six hours of the cause of protest; it must state plainly the cause or complaint or appeal, and must be covered by a deposit of \$2, which sum shall be forfeited to the Association if the said protest is not sustained. The Board of Managers, however, earnestly hope that exhibitors will not enter protests without the strongest grounds for doing so, as much unpleasantness and annoyance is often occasioned by protests of a frivolous nature. The Board of Managers are to be the final judges of all protests.

No animal or article exhibited shall have about it any prize colors or cards until the awards have been made in their respective classes.

No person shall be admitted in the horse and cattle ring during the time of judging except the judges, the grooms or persons in charge of the animals, and members of the press.

All prize cards which have been affixed by the judges must be displayed during the Exhibition. Any infraction of this rule will incur the forfeiture of any premium awarded.

Any person who shall attempt to interfere with or influence the judges while in discharge of their duties, or who shall, at any time, on the premises of the Association use any contemptuous or abusive language to any judge in consequence of any award made by him, shall forfeit his right to any premiums to which he might otherwise be entitled, and shall be excluded from exhibiting for one year thereafter. Judges are particularly requested to immediately report any breach of this rule.

Upon the discovery of any fraud, deception, or dishonest practice, either in the preparation, ownership, or of any representation concerning any animal or article exhibited, which may have affected, or have been intended to affect, the decision of the judges, the Board of Managers have power to withhold the payment of any prize awarded, and may prohibit any such party or parties from exhibiting for one or more years, and may also publish the names of such parties or not, as may be deemed most expedient.

All stall doors must be left open so that visitors can inspect the live stock between the hours of 9 a.m. and 4 p.m., and at such other times as the officers may find it desirable.

All horses over the age of six months must be halter broke and led on halter.

Exhibitors of pure bred stock must hand in the certificates of registry to the Judges.

Good buildings are provided upon the grounds for live stock. Bedding and water will be furnished for horses, cattle, sheep, and pigs without charge, from the opening until the close of the Exhibition, so that the stock may be taken to the ground immediately on their arrival. Hay and grain for cattle, horses, sheep, and pigs will be for sale on the grounds at lowest prices. Exhibitors will report at once if unreasonable prices are exacted.

A grand parade of live stock will take place at 3 p.m. on each day of the Exhibition, and the following rule will be strictly enforced.

The production of any animals in the horse ring may be ordered by either of the committees on live stock, for review or other purposes, at any time during the Exhibition; and any attendant or exhibitor refusing to bring such animals into the ring when so required, shall forfeit his entrance fees and any premiums which have been awarded him.

“B. & K.”

ROLLED OATS.

The Standard of Excellence.

No Breakfast Complete Without Them.

Hay, Grain AND Mill Feed

Bought and Sold.

 Correspondence solicited.

The Brackman-Ker Milling Co.

(Limited)

Victoria. Vancouver.
Edmonton.

Stop at the

DOMINION HOTEL

The Best House in Town.

Headquarters for the Nicola, Lewis Creek and Granite Creek Stages. Every convenience for Travelers and Commercial Men. Excellent table. Well stocked bar.

C. J. Robinson & Co., - - - Proprietors.

THOS. HORNBY, Proprietor
of

THE PIONEER STABLES,

Kamloops, B.C.

Dealer in

Wood, Hard and Soft Coal, and Cumberland
Blacksmiths' Coal.

Teaming of All Kinds.

MONTREAL HOTEL, KAMLOOPS,
B.C.

Nearest hotel to Exhibition grounds and K.M. & A.A. Hall. First-class hotel for families and commercial men. Rates from \$1 to \$2 per day. About fifty yards from the C.P.R. station. - -

Napoleon Latremouille, Proprietor.

THE KAMLOOPS HOUSE,

C. J. Robinson & Co., Proprietors.

Is the place where you can
always be sure of getting the

Choicest Wines and Liquors, and the
Best Brands of Cigars. Foreign and
Domestic.

JUDGES AND JUDGING.

Judging commences promptly at 10 a.m. on Wednesday, September 25th. Judges will be appointed by the Board of Managers previous to the Exhibition, who will receive a circular informing them of the fact and when to report to the office on the grounds.

No person will be allowed to act as judge who is in any way interested in the articles to be examined.

It is particularly requested that the judges will not enter into argument with exhibitors as to the merits of their exhibits.

It is desired that all judges of each class go together to hand in their report, instead of sending it by one of their number, and to remain together until their book has been examined by the Secretary or his assistants, in order that cases of error or doubt may be more easily and promptly made right.

Judges will please sign and hand in their awards to the Secretary or his assistants as soon as possible, and make their more extended reports afterwards, making such recommendation as circumstances or their experience may suggest.

The judges are particularly requested not to leave the grounds until they have ascertained from the Secretary that there are no protests against the awards in the class they have judged.

In the absence of competition in any section, the judges will award only such premiums as they think the article deserving of. They will exercise their discretion as to whether they will award the first, second, or any premium. In no case are premiums to be awarded unless exhibit is worthy.

Ribbons will be placed upon winners in live stock class immediately after the decision of the judges. Red ribbon denotes first prize; blue, second; red, white and blue, championship.

It does not follow that because a prize is offered for any particular animal or article that it must be awarded, unless there is a proper competition, or unless the exhibit is really of sufficient merit to warrant the award being made.

The Judges are particularly requested to note this fact.

In addition to the stated premiums offered for animals or articles in the lists, the judges may also distinguish such animals or articles as they consider deserving of notice, but which have not received prizes, by tickets with the words "Commended," "Highly Commended," or "Very Highly Commended," upon them. These tickets will not entitle the holder to any money payment.

In awarding prizes for breeding cattle, sheep, or pigs, judges are especially instructed not to take into consideration their present value to the butcher, but to decide according to their relative merits for the purpose of breeding.

The ages of all live stock will be computed from the 1st January of the year in which it was born.

No animal will be allowed to enter or compete in more than one class or section except for the championship or for the best of any age in its class, and in special prizes and herds.

Each award must be written in a plain, careful manner on the blank page opposite the number of the entry.

The judges are expected, in the execution of their duties, to be careful to act with the most rigid impartiality, and to make their entries in a clear and conspicuous manner, in all cases of doubt and difficulty referring freely to the Secretary or to the Committee of the Association in charge of the department.

For further information see instructions under entries.

PAYMENT OF PRIZES.

The Treasurer will be prepared to commence paying the premiums at his office, for all classes of exhibits, on Saturday, October 12th, 1901, at 11 a.m.

Persons entitled to premiums must apply for them at the Secretary's office, where they will receive orders on the Treasurer for the amount. These orders must be endorsed, as they will be payable to order, not to bearer, and on presentation to the Treasurer properly endorsed they will be paid either in cash or by cheque on the bank.

All persons to whom a prize is awarded, and who do not receive the same as above, must apply to the Secretary of the Association for payment thereof, in writing, on or before October 31, in the year in which the prize is awarded, or such prize will be forfeited.

MISCELLANEOUS.

If any person, through ignorance of regulations, shall bring things to the Exhibition without having entered them at the proper time, the same may, in the discretion of the Superintendent in charge of the several departments, be allowed to be brought upon the grounds, and so placed that they may be examined by the public, but shall not be classified, nor shall any official examination of them be made or premiums awarded.

Where space has been awarded to any exhibitor, the Secretary reserves the right, in case any exhibitor shall fail to make or maintain a creditable display, to declare the space allotted to him, or any portion thereof, forfeited. Exhibitors must arrange their exhibits in as neat and attractive a manner as possible, and neatly fill up the space allotted to them, in default of which the Secretary will cancel their entries and require the removal of the goods.

Instructions have been given to the Board of Managers that no bills will be recognized by the Association unless incurred by order of the Secretary. Interested parties will please pay particular attention to this fact.

The Secretary reserves the right to prescribe the dimensions and regulate the position of all signs, and generally to direct the management of articles on exhibition so far as the same may be necessary to give harmony and an attractive appearance. Exhibitors will not be allowed to distribute about the grounds or buildings hand bills or other advertisements that may cause a nuisance. Neat cards for that purpose are recommended, as they are more likely to be kept by visitors and not thrown on the ground.

No exhibitor or attendant will be allowed to make unseemly noises, which may be considered a nuisance, in calling the attention of visitors to his exhibits; and any exhibitor or attendant who may be guilty of distributing any advertising cards or notices which may be considered immoral or objectionable by the Board of Managers, shall forfeit his space and all other privileges, and shall be removed from the Exhibition grounds.

The parties supplying refreshments at the restaurants must lay in their supply before 9 o'clock each day, unless under special unavoidable circumstances, when permission must be obtained from the Secretary.

If any person wilfully injures or destroys any property within the Exhibition grounds of the Association, or hinders or obstructs the officers or servants of the Association, or any policeman or constable duly appointed, in the execution of his duty, or gains admission contrary to the rules of the Association, he shall be prosecuted according to law.

No award of a prize not offered in the list will be paid unless sanctioned by the Board of Managers of the Association.

The officers of the Association have the power to enforce these rules, and to prohibit and prevent all kinds of gambling; to regulate or prevent the huckstering or trafficking in fruits, goods, wares, or merchandise on the Exhibition grounds; any person who, after due notice of such rules, violates the same, shall be liable to be removed by the officers, constables, or policemen of the said Association, and shall be subject to the penalties.

Favorable arrangements have been made with all railway and steamboat companies for the conveyance of passengers and articles to and from the Exhibition at greatly reduced rates.

Live stock and all other exhibits sent as freight will be returned free, on the freight having been paid one way, that is, to Kamloops.

Should there not be funds enough on hand to pay prizes in full they will be paid pro rata.

In case of any dispute or misunderstanding not covered by the Constitution and By-laws of this Association, the question must be referred to the Board of Managers, whose decision shall be final.

The forenoon of the first day will be set apart for judging; the grounds will be open to the public at 2 p.m. on the same day.

All monies shall be collected by the Secretary and forthwith paid to the Treasurer, taking his receipt for the same; and no money shall be paid out

Halcyon Hot Springs Sanitarium - -

Arrow Lake, B. C.

The most perfectly appointed Health and
Pleasure Resort in the West. The Cura-
tive properties of its Waters are unequalled.

They Cannot Be Surpassed

★ **FOR CURING** ~~~~~ ★

All Nervous and Muscular Diseases,

FOR HEALING ~~~~~

All Kidney, Liver and Stomach Ailments, and

They Cannot Be Excelled

FOR ELIMINATING ~~~~~

All Metallic Poisons from the System.

The Grandeur of the Scenery is Unrivalled

Mountains. Forests. Lakes. Waterfalls.

Boating. Yachting. Fishing.

Excursions. Tennis.

Resident Physician and Nurse.

except by the Treasurer on the written order of the Secretary on the regular forms of the Association, and the same shall be entered on the corresponding stub in the Secretary's order book.

All articles of field, garden and dairy produce must be the bona fide production of the exhibitor; any violation of this article will cause the exhibitor to forfeit any prize that may have been awarded him or her in the division to which said exhibit or exhibits belong.

The most careful and thorough arrangements possible have been made to guard against fire. As a watchman will be on during the whole night the danger of fire is very remote; but exhibitors desiring insurance must give it their personal attention.

An ample police force, detailed for the purpose by the city, will be on duty night and day during the continuance of the Exhibition. But exhibitors are expected to exercise constant supervision over their articles on exhibition, as the Association will not be responsible for loss or damage by fire, theft or otherwise. Small and valuable articles should be exhibited in show cases, which may be securely locked when desirable.

The Finance Committee will have a general oversight of all the financial affairs of the Association, and all accounts must be "O.K.'ed" by said committee before being paid by the Treasurer.

The Secretary must keep receipt stubs of all cash received by him.

Enquiries as to the Exhibition and its arrangements before the opening should be addressed to the Secretary, P.O. Box 38, Kamloops. During the Exhibition enquiries may be made at the Secretary's office, on the grounds.

Visitors may be assured of finding on the grounds everything necessary to the convenience of old and young during the entire day. Ample restaurants and lunch rooms will serve meals and refreshments during hours of Exhibition at reasonable rates. The city authorities will co-operate with the officers of the Association in every practicable manner to ensure the safety and contribute to the pleasure of the visitors.

The formal opening will take place at 2 p.m. on Wednesday, Sept. 25th, at which many distinguished persons have been invited to be present.

Several bands of music will be present each afternoon.

Parties competing for special prizes must make entries for the same in the regular entry forms.



J. R. Kull & Co.

Successors to
Kull Bros. & Co. Purveyors of Meats,
Main Street, Kamloops, B. C.

Wholesale and Retail Dealers in

Beef, Pork, Mutton, Lamb, Poultry, Etc.

All orders in our line promptly filled.
Highest price paid for Hides and Skins.

Horses and Cattle bought and sold.

A large number of Pack Horses kept constantly on hand; also Beef Cattle.

NEWS

Local and Provincial

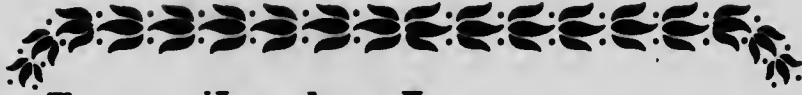
THE KAMLOOPS STANDARD

**Job Printing Good
and Cheap.**

PRIZE LIST.



| DIVISION A. | | FIRST. | SECOND. |
|------------------------------------|-----------------|---------|---------|
| CLASS | CATTLE—DURHAMS. | | |
| 1—Bull, 3 years old and upwards | | \$15 00 | \$ 7 50 |
| 2—Bull calf | | 5 00 | 3 00 |
| 3—Best bred cow, in calf or milk | | 10 00 | 7 50 |
| 4—Heifer calf | | 5 00 | 3 00 |
| HOLSTEINS. | | | |
| 5—Bull, 3 years old and upwards | | 7 50 | 5 00 |
| 6—Best bred cow, in calf or milk | | 7 50 | 5 00 |
| JERSEYS. | | | |
| 7—Bull, any age | | 7 50 | 5 00 |
| 8—Best bred cow, in calf or milk | | 7 50 | 5 00 |
| HEREFORDS. | | | |
| 9—Bull, any age | | 15 00 | 7 50 |
| 10—Bull calf | | 8 00 | 3 00 |
| 11—Cow, in calf or milk | | 10 00 | 7 50 |
| 12—Heifer calf | | 5 00 | 3 00 |
| GRADED STOCK. | | | |
| 13—Milch cow | | 7 50 | 3 50 |
| 14—Heifer, 2 years old and under 3 | | 5 00 | 2 50 |
| 15—Heifer, 1 year old and under 2 | | 3 50 | 2 00 |
| 16—Fat steer of any age | | 7 50 | 3 50 |
| POLLED ANGUS. | | | |
| 17—Bull, 3 years old and upwards | | 7 50 | 3 50 |
| 18—Bull, 1 year old | | 2 50 | 1 50 |
| 19—Cow, in calf or milk | | 5 00 | 2 50 |
| 20—One year old heifer | | 3 50 | 2 00 |



Two Heads Are Better Than One.

So don't hesitate to ask us any questions about the prevailing styles in Hats, Caps, Boots, Shoes, Clothing, Shirts, Collars and Neckwear.

Remember that our goods are new and up-to-date, and our stock is larger than any other store in our line in Kamloops,

We will save you money on Clothing, as we have a nice range to choose from, at prices from \$2.50 to \$15 per suit. "Such prices need no talk." Also, we can get you a suit made to measure—guaranteed to fit. Over a hundred samples to choose from, and at \$10 a suit cheaper than tailor made.

Like You to take a glance at our Gloves, Hose and our Silk goods. They are good goods.

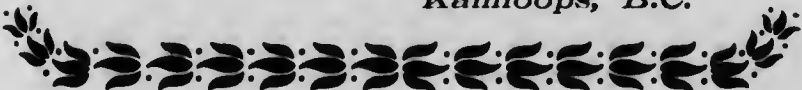
"Our regular prices are, as a rule, lower than the 'Reduced' of other stores."

No trouble to show goods.

Arthur F. Lauder,

Gents' Furnisher,

Kamloops, B.C.



SECOND.

\$ 7 50

3 00

7 50

3 00

5 00

5 00

5 00

5 00

7 50

3 00

7 50

3 00

3 50

2 50

2 00

3 50

3 50

1 50

2 50

2 00



DIVISION B.

| CLASS. | HORSES--ROADSTERS. | FIRST. | SECOND |
|---|--------------------|---------|---------|
| 1—Stallion..... | | \$15 00 | \$ 7 50 |
| 2—Mare, with foal at foot..... | | 10 00 | 5 00 |
| 3—Two year old filly or colt..... | | 5 00 | 2 50 |
| 4—Yearling colt or filly..... | | 5 00 | 2 50 |
| 5—Best general purpose team..... | | 10 00 | 5 00 |
| 6—Best single driver..... | | 7 50 | 4 00 |
| 7—Best carriage team. (See special prizes.) | | | |

Carriage and roadster horses to be driven on the track.

DRAUGHT.

| | | | |
|--|---------|---------|------|
| 8—Stallion..... | | 15 00 | 5 00 |
| 9—Mare with foal at foot..... | | 7 50 | 3 00 |
| 10—Two year old filly or colt..... | \$ 5 00 | \$ 2 00 | |
| 11—Team of mares or geldings in harness..... | 7 50 | 5 00 | |
| 12—Best yearling filly or colt..... | 5 00 | 2 50 | |

GENERAL PURPOSE.

| | | | |
|--|-------|------|--|
| 13—Stallion, for general purposes..... | 10 00 | 5 00 | |
| 14—Mare, with foal at foot..... | 7 50 | 5 00 | |
| 15—Mare or gelding, any age..... | 5 00 | 2 00 | |
| 16—Saddle horse..... | 5 00 | 2 50 | |
| 17—Walking horse under saddle..... | 7 50 | 2 50 | |

THOROUGHBREDS.

| | | | |
|-----------------------|-------|------|--|
| 18—Stallion..... | 15 00 | 5 00 | |
| 19—Mare..... | 5 00 | 2 50 | |
| 20—Colt or filly..... | 2 50 | 1 50 | |

EQUESTRIANSHIP.

| | | | |
|---|------|------|--|
| 21—Most graceful and accomplished lady rider. Five to enter. Entrance, \$1..... | 7 50 | 2 50 | |
|---|------|------|--|

RULE—No lady will be allowed to ride faster than a moderate galop. Running will forfeit all claim to premium.



DIVISION C.

| CLASS. | SHEEP. | FIRST. | SECOND |
|-----------------------------------|--------|---------|---------|
| 1—Aged ram, any breed..... | | \$ 5 00 | \$ 3 00 |
| 2—Ram, 1 year old, any breed..... | | 3 50 | 1 50 |

The Wise Purchasers

WILL COME STRAIGHT TO **W. J. KERR**



If looking for quality in low-priced articles. Watches, Rings or Jewelry are stock carrying the assurance that its value is permanent and that it will be acceptable in any family. We have

**Watches,
Rings,
Chain Bracelets,
Souvenir Goods,
Silverware,
Novelties,**

And all the latest things in Jewelry. Repairing is our special care.

SEC-ND
\$ 7 50
5 00
2 50
2 50
5 00
4 00

5 00
3 00
\$ 2 00
5 00
2 50

5 00
5 00
2 00
2 50
2 50

5 00
2 50
1 50

2 50
galop.

SECOND
3 00
1 50

Visitors to the Fair

will find it to their advantage to call on

..MARSHALL & TODD..

and inspect their goods and compare prices. We carry a full assortment of Crockery and Glassware, imported direct from the manufacturers. We lead in

**CEYLON AND INDIA TEAS,
MOCHA AND JAVA COFFEES.**

Prices as Low if Not Lower Than the Lowest.

MARSHALL & TODD, The Family Grocers.

| CLASS. | FIRST | SECOND. |
|--|---------|---------|
| 3—Ewe, aged, any breed..... | \$ 3 50 | \$ 1 50 |
| 4—Ewe, 1 year, any breed..... | 3 50 | 1 50 |
| 5—Pen consisting of 1 ram, two ewes, 1 ram lamb, 1 ewe lamb..... | 5 00 | 2 50 |
| 6—Two fat ewes or wethers..... | 5 00 | 2 50 |

=====

DIVISION D.

| CLASS. | PIGS—BERKSHIRE. | |
|--|-----------------|---------|
| | FIRST. | SECOND. |
| 1—Boar, 1 year old and upwards..... | \$ 5 00 | \$ 2 50 |
| 2—Breeding sow, in farrow at the meeting, or that has been within six months..... | 5 00 | 2 50 |
| 3—Pen of two sows of the same litter, under 12 months old..... | 3 50 | 2 00 |
| 4—Boar, under 1 year..... | 3 50 | 2 00 |
| POLAND CHINA. | | |
| 5—Boar, over 1 year..... | 5 00 | 2 50 |
| 6—Breeding sow, in farrow at the meeting, or that has been within six months..... | 5 00 | 2 50 |
| 7—Pen of two sows of the same litter, under 12 months old..... | 3 50 | 2 00 |
| 8—Boar, under 1 year old..... | 3 50 | 2 00 |
| ESSEX. | | |
| 9—Boar, over 1 year old..... | 5 00 | 2 50 |
| 10—Breeding sow, in farrow at the meeting, or that has been within six months..... | 5 00 | 2 50 |
| 11—Pen of two sows of the same litter, under 12 months old..... | 3 50 | 2 00 |
| 12—Boar, under 1 year..... | 3 50 | 2 00 |
| WHITE CHESTER. | | |
| 13—Boar, over 1 year..... | 5 00 | 2 50 |
| 14—Breeding sow, in farrow at the meeting, or that has been within six months..... | 5 00 | 2 50 |
| 15—Pen of two sows of the same litter, under 12 months old..... | 3 50 | 2 00 |
| 16—Boar, under 1 year..... | 3 50 | 2 00 |
| OTHER BREEDS. | | |
| 17—Boar, 1 year old and upwards, any breed not specified above..... | 5 00 | 2 50 |
| 18—Sow, 1 year old and upwards, any breed not specified above..... | 5 00 | 2 50 |
| 19—Fat pig, any breed..... | 3 50 | 2 00 |

=====

DIVISION E.

| CLASS. | POULTRY. | |
|--|----------|---------|
| | FIRST. | SECOND. |
| 1—Best pair Turkeys (male and female), bronze or black | \$ 3 00 | \$ 1 00 |
| 2— " " Turkeys (male and female), white..... | 3 00 | 1 00 |
| 3— " " Geese, Toulouse, (male and female)..... | 3 00 | 1 00 |
| 4— " " " Embden, (male and female)..... | 3 00 | 1 00 |
| 5— " " " China, white, (male and female).... | 3 00 | 1 00 |
| 6— " " " China, gray, (male and female).... | 3 00 | 1 00 |
| 7— " " Ducks, Aylesbury, (male and female)..... | 1 50 | 75 |
| 8— " " " Pekin, (male and female)..... | 1 50 | 75 |

SECONDO.
1 50
1 50
2 50
2 50

E. G. PRIOR & CO., Limited Liability.
 Headquarters For **Agricultural Machinery,**
Kamloops, B.C.



Massey-Harris Steel Binder.

We carry the best line of machinery manufactured.

**Hardware,
Wagons,
Buggies,
Carts,
Sleighs,
Cutters,
Stoves.**

Give us a call or write us.

SECONDO.
2 50
2 50
2 00
2 00
2 50
2 50
2 00
2 00

2 50
2 50

2 00
2 00
2 50
2 50
2 00
2 00

2 50
2 50
2 00

SECONDO.
1 00
1 00
1 00
1 00
1 00
1 00
1 00
75
75



"Tank de
L'ud for de
Barbd Wire.
de Melons
am safe."

**QUEEN'S
HOTEL,**

Main St., Kamloops,
ROBT. H. MOORE,
Proprietor.

Choicest

LIQUORS AND CIGARS

Kept in Stock.

Good Stabling in Connection.

CALL AND SEE US AND YOU WILL FIND US UP-TO-DATE.

| CLASS. | | FIRST. | SECOND. |
|--------|--|---------|---------|
| 9— | “ Rouen, (male and female)..... | \$ 1 50 | \$ 75 |
| 10— | “ Cayuga, (male and female)..... | 1 50 | 75 |
| 11— | Dark Brahmas..... | 1 50 | 75 |
| 12— | Light Brahmas..... | 1 50 | 75 |
| 13— | Buff Cochins..... | 1 50 | 75 |
| 14— | Partridge Cochins..... | 1 50 | 75 |
| 15— | White Cochins..... | 1 50 | 75 |
| 16— | Langshans..... | 1 50 | 75 |
| 17— | Barred Plymouth Rocks..... | 1 50 | 75 |
| 18— | White Plymouth Rocks..... | 1 50 | 75 |
| 19— | Silver Laced Wyandottes..... | 1 50 | 75 |
| 20— | White Wyandottes..... | 1 50 | 75 |
| 21— | Houdans..... | 1 50 | 75 |
| 22— | Black Minorcas..... | 1 50 | 75 |
| 23— | Polish, any kind..... | 1 50 | 75 |
| 24— | Brown Leghorns..... | 1 50 | 75 |
| 25— | White Leghorns..... | 1 50 | 75 |
| 26— | Black Spanish..... | 1 50 | 75 |
| 27— | Hamburgs, any kind..... | 1 50 | 75 |
| 28— | B. B. Red Game..... | 1 50 | 75 |
| 29— | Cornish Indian Game..... | 1 50 | 75 |
| 30— | Dorkings, any kind..... | 1 50 | 75 |
| 31— | American Dominiques..... | 1 50 | 75 |
| 32— | White Minorcas..... | 1 50 | 75 |
| 33— | B. S. Game..... | 1 50 | 75 |
| 34— | Duck Wing Game..... | 1 50 | 75 |
| 35— | Guineas, any kind..... | 1 50 | 75 |
| 36— | Bantams, any kind..... | 1 50 | 75 |
| 37— | Red Pyle Game..... | 1 50 | 75 |
| 38— | Rose Comb Leghorns, any kind..... | 1 50 | 75 |
| 39— | Best pen of poultry hatched in 1901, 1 male, 3 females | 5 00 | 2 00 |

=====

DIVISION F.

| CLASS. | DAIRY PRODUCE, ETC. | FIRST. | SECOND. |
|--------|---|---------|---------|
| 1— | One pound roll fresh butter..... | \$ 2 50 | \$ 1 00 |
| 2— | Tub or crock of butter (not less than 25 pounds)..... | 5 00 | 2 50 |
| 3— | Cheese, made in the Province and exhibited by the manufacturer..... | 5 00 | 2 50 |
| 4— | Ten pound crock of butter..... | 2 50 | 1 00 |
| 5— | Best exhibit of butter in pats or bricks..... | 2 50 | 1 50 |
| 6— | Hen's eggs, 12 heaviest..... | 1 00 | 50 |
| 7— | Best collection cured meats (local)..... | 5 00 | |
| 8— | Loaf of home-made bread..... | 2 00 | 1 00 |
| 9— | Best collection of sealed fruits..... | 3 00 | 2 00 |
| 10— | Best quart of strained honey..... | 2 00 | 1 00 |

=====

DIVISION G.

| CLASS. | VEGETABLES. | FIRST. | SECOND. |
|--------|-----------------------------|---------|---------|
| 1— | Beans, in pod, 1 quart..... | \$ 1 00 | \$ 50 |
| 2— | Beets, turnip, six..... | 1 00 | 50 |
| 3— | Beets, Long Red, six..... | 1 00 | 50 |
| 4— | Beets, White, six..... | 1 00 | 50 |
| 5— | Cabbage, white, two..... | 2 00 | 1 00 |
| 6— | Cabbage, red, two..... | 2 00 | 1 00 |

SECOND.

\$ 75
7
75
75
75
75
75
75
75
75
75
75
75
75
75
75
75
75
75
75
75
75
75
2 00

Similkameen - City.

The Coming Mining and Commercial
Centre of Similkameen Between
Keremeos and Princeton,
British Columbia.

SIMILKAMEEN CITY TOWNSITE CO.

Frank Bailey, Manager. H. M. Kefer, Agent.

4 Wallace-Miller Block, GREENWOOD, B. C.

A. B. C. Code, Clough's Code.

Head Office. Both 'Phones.

AGENCIES AT:

Victoria, Vancouver, Spokane, Toronto, Rossland, Nelson
and all Boundary Towns.

TO WHOM IT MAY CONCERN:

We, the several persons, whose names and addresses are hereunto subscribed, respectfully declare that we have seen Similkameen City and the surrounding country, and that the situation is as represented on page 27 of Bailey's pamphlet of the Similkameen district, and that his accompanying map shows the position of the townsite to be as there set down.

GREENWOOD—F. N. Gladden, John Gladden, D. McMillan, R. P. Williams, C. R. Townley, Phil McDonald, Robert Wood, Geo. R. Naden, W. D. Hodges, Thos. S. Miller, C. W. H. Sansom, Hugh McKee. VICTORIA—Wm. Baillie, F. A. Devereaux. FAIRVIEW—L. W. Shatford, W. Featherstonhaugh, R. H. Parkinson, P. L. S., S. Cousins. OLALLA—W. C. McDougall, Jas. Riordan, David Black. ANACONDA—C. L. Burnside. PRINCETON—A. Sirett, T. J. McAlpine. PHOENIX—K. P. Matherson. CAMP HEDLEY—R. O. Hawtrey. LONDON, ENG—Chas. E. Oliver.

These are copies of the written names of the original reference. Anyone who wishes to verify my report may do so by writing to any or all of the parties.

FRANK BAILEY, Manager.

SECOND.

\$ 1 00
2 50
2 50
1 00
1 50
50
1 00
2 00
1 00

SECOND.

\$ 50
50
50
50
1 00
1 00

IN

MEN'S FURNISHINGS

WE LEAD THE CITY.

Men's Clothing,
 Children's Clothing,
 Men's Underwear,
 Children's Underwear,
 Heavy Winter Shirts,
 Men's Overshoes and Rubbers,
 Men's Overcoats,
 Men's and Boy's Pea Jackets,
 Blankets and Comforters,
 Boots and Shoes,
 Hats and Caps,
 Winter Gloves and Mitts,
 White Shirts and Collars,
 Handkerchiefs and Ties,
 Women's Overshoes and Rubbers,
 Children's Overshoes and Rubbers,
 Felt Slippers,
 Waterproof Capes and Coats.

If You Want Novelties in Neat and Natty Goods Come to Us. New Goods Arriving Every Week.

Commencing Fair Week we will adopt a new system giving **Ten Per Cent. off to the Cash Buyer.** It is only fair to the man who pays cash for his goods that he should have the advantage over the man who buys on credit. So with our low selling prices and the cash discount it will pay you to do your trading with us when at the Fair. We have the best assortment of furnishings in the city to select from.

F. E. BURNS,

UP-TOWN HATTER AND FURNISHER, : : KAMLOOPS, B. C.

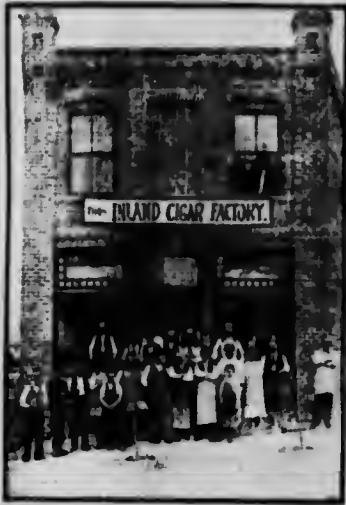
| CLASS | FIRST. | SECOND. |
|--|---------|---------|
| 7—Cabbage, heaviest, two | \$ 2 00 | \$ 1 00 |
| 8—Carrots, short, six | 1 00 | 50 |
| 9—Carrots, intermediate, six | 1 00 | 50 |
| 10—Cauliflower, two | 1 00 | 50 |
| 11—Celery, six | 1 00 | 50 |
| 12—Citron, two | 2 00 | 1 00 |
| 13—Corn, twelve | 1 00 | 50 |
| 14—Cucumber, two | 1 00 | 50 |
| 15—Kohl Rabi, two | 1 00 | 50 |
| 16—Musk Melons, two | 2 00 | 1 00 |
| 17—Onions, White, twelve | 2 00 | 1 00 |
| 18—Onions, Red, twelve | 2 00 | 1 00 |
| 19—Onions, Yellow, twelve | 2 00 | 1 00 |
| 20—Parsnips, six | 1 00 | 50 |
| 21—Pumpkins, two | 1 00 | 50 |
| 22—Potatoes, Carmon, twelve | 2 00 | 1 00 |
| 23—Potatoes, Burbank, twelve | 2 00 | 1 00 |
| 24—Potatoes, Beauty of Hebron, twelve | 2 00 | 1 00 |
| 25—Potatoes, Early Rose, twelve | 2 00 | 1 00 |
| 26—Potatoes, Early Sunrise, twelve | 2 00 | 1 00 |
| 27—Potatoes, Great Divide, twelve | 2 00 | 1 00 |
| 28—Potatoes, Green Mountain, twelve | 2 00 | 1 00 |
| 29—Potatoes, Kidney, twelve | 2 00 | 1 00 |
| 30—Potatoes, St. Patrick, twelve | 2 00 | 1 00 |
| 31—Potatoes, White Elephant, twelve | 2 00 | 1 00 |
| 32—Potatoes, Snowflake, twelve | 2 00 | 1 00 |
| 33—Potatoes, any other variety named, twelve | 2 00 | 1 50 |
| 34—Potatoes, heaviest, twelve | 2 00 | 1 00 |
| 35—Peppers, red or green, twelve | 1 00 | 50 |
| 36—Radishes, six | 1 00 | 50 |
| 37—Salsify, six | 1 00 | 50 |
| 38—Squash, two | 1 00 | 50 |
| 39—Tomatoes, six | 2 00 | 1 00 |
| 40—Turnips, table variety, six | 1 00 | 50 |
| 41—Vegetable marrow, two | 1 00 | 50 |
| 42—Collection of onions, six each | 3 50 | 2 00 |
| 43—Collection of Potatoes, six each | 5 50 | 2 00 |
| 44—Collection of Tomatoes, six each | 3 50 | 2 00 |
| 45—Watermelons, two | 2 00 | 1 00 |
| 46—Collection garden herbs | 2 00 | 1 00 |

N.B.—When two entries are made in one class the different varieties must be correctly named.

DIVISION H.

FIELD PRODUCE OF PROVINCIAL GROWTH.

| CLASS. | FIRST. | SECOND. |
|------------------------------------|---------|---------|
| 1—Barley, White, 25 pounds | \$ 2 00 | \$ 1 00 |
| 2—Barley, Hulless, 25 pounds | 2 00 | 1 00 |
| 3—Oats, White, 25 pounds | 2 00 | 1 00 |
| 4—Rye, 25 pounds | 2 00 | 1 00 |
| 5—Wheat, Autumn, 25 pounds | 2 00 | 1 00 |
| 6—Wheat, Spring, 25 pounds | 2 00 | 1 00 |
| 7—Beans, White, 25 pounds | 2 00 | 1 00 |
| 8—Beans, Brown, 25 pounds | 2 00 | 1 00 |
| 9—Peas, Grey, 25 pounds | 2 00 | 1 00 |
| 10—Peas, White, 25 pounds | 2 00 | 1 00 |



Satisfaction and Contentment

Are obtained by all smokers who
smoke the celebrated brands of

La Morena AND Interior Cigars.

Equal in flavor and aroma to any
high priced imported article, and
much preferred after a fair trial
has been given. Made only from
the finest Havana leaf
by

The Inland Cigar Mfg. Co., Ltd. KAMLOOPS,
B. C.

—UNION MADE.—

The Light Running

Plano Harvesting Machinery

Leads the World.

Call and inspect them or write for Catalogue.

SHOTTON & McCLUGHAN.

One door east of Canadian Bank of Commerce.

We also handle Stoves, Ranges, Tinware, Agateware and Hardware.

Horseshoeing a specialty. Carriage and Wagon work.

F. A. KELLY,

Main Street,
KAMLOOPS, B.C.

The Leading Blacksmith and Horseshoer. - -

Repairing and general work of all kinds done in the best style and
on the shortest notice. Get our cash prices. You will save money by
giving us a call.

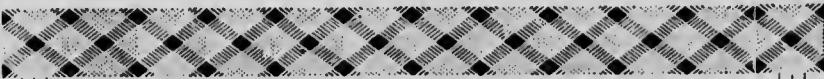
| CLASS | FIRST. | SECOND. |
|---|---------|---------|
| 11—Corn or Maize, 12 ears..... | \$ 2 00 | \$ 1 00 |
| 12—Carrots, White, six..... | 1 00 | 50 |
| 13—Carrots, Long Red or Orange, six..... | 1 00 | 50 |
| 14—Mangold Wurtzel, Long Red, six..... | 1 00 | 50 |
| 15—Mangold Wurtzel, Globe, six..... | 1 00 | 50 |
| 16—Sugar Beets, six..... | 1 00 | 50 |
| 17—Turnips, six..... | 1 00 | 50 |
| 18—Best collection of grass seeds, named..... | 5 00 | 2 50 |
| 19—Alfalfa Seed, 10 pounds..... | 2 00 | 1 00 |
| 20—Clover Seed, 10 pounds..... | 2 00 | 1 00 |
| 21—Sanfoin Seed, 10 pounds..... | 2 00 | 1 00 |
| 22—Timothy Seed, 10 pounds..... | 2 00 | 1 00 |
| 23—Bale of hay..... | 2 00 | 1 00 |
| 24—Sheaf of Autumn Wheat..... | 2 00 | 1 00 |
| 25—Sheaf of oats..... | 2 00 | 1 00 |

DIVISION I—FRUITS.

| CLASS. | FALL APPLES—FIVE OF EACH. | FIRST | SECOND. |
|---|-----------------------------|---------|---------|
| 1—Alexander..... | | \$ 1 50 | \$ 1 00 |
| 2—Bailey Sweet..... | | 1 50 | 1 00 |
| 3—Colvert..... | | 1 50 | 1 00 |
| 4—Duchess of Oldenburg..... | | 1 50 | 1 00 |
| 5—Gravenstein..... | | 1 50 | 1 00 |
| 6—Hass (Fall Queen)..... | | 1 50 | 1 00 |
| 7—Hawkeye..... | | 1 50 | 1 00 |
| 8—Maiden's Blush..... | | 1 50 | 1 00 |
| 9—Red Beitigheimer..... | | 1 50 | 1 00 |
| 10—Snow of Famuese..... | | 1 50 | 1 00 |
| 11—St. Lawrence..... | | 1 50 | 1 00 |
| 12—Twenty Ounce Pippin..... | | 1 50 | 1 00 |
| 13—Warner King..... | | 1 50 | 1 00 |
| 14—Wealthy..... | | 1 50 | 1 00 |
| | WINTER APPLES—FIVE OF EACH. | | |
| 15—Baldwin..... | | 1 50 | 1 00 |
| 16—Baxter..... | | 1 50 | 1 00 |
| 17—Bismarck..... | | 1 50 | 1 00 |
| 18—Belle de Boskoop..... | | 1 50 | 1 00 |
| 19—Belleflower..... | | 1 50 | 1 00 |
| 20—Ben Davis..... | | 1 50 | 1 00 |
| 21—Blenheim Orange..... | | 1 50 | 1 00 |
| 22—Blue Pearman..... | | 1 50 | 1 00 |
| 23—Calville Red Winter..... | | 1 50 | 1 00 |
| 24—Gideon..... | | 1 50 | 1 00 |
| 25—Gano..... | | 1 50 | 1 00 |
| 26—Gloria Munda..... | | 1 50 | 1 00 |
| 27—Golden Russet..... | | 1 50 | 1 00 |
| 28—Grime's Golden (Grime's Pippin)..... | | 1 50 | 1 00 |
| 29—Hubbardston's Non Such..... | | 1 50 | 1 00 |
| 30—Jonathan..... | | 1 50 | 1 00 |
| 31—King..... | | 1 50 | 1 00 |
| 32—Longfield..... | | 1 50 | 1 00 |
| 33—Margil..... | | 1 50 | 1 00 |
| 34—Magog Red Streak..... | | 1 50 | 1 00 |
| 35—Mann..... | | 1 50 | 1 00 |
| 36—McIntosh Red..... | | 1 50 | 1 00 |
| 37—McMahon's White..... | | 1 50 | 1 00 |

| CLASS. | FIRST. | SECOND. |
|---|---------|---------|
| 38—Milding..... | \$ 1 50 | \$ 1 00 |
| 39—Northern Spy..... | 1 50 | 1 00 |
| 40—Newton Pippin..... | 1 50 | 1 00 |
| 41—Nonpariel..... | 1 50 | 1 00 |
| 42—Ontario..... | 1 50 | 1 00 |
| 43—Pewaukee..... | 1 50 | 1 00 |
| 44—Red Canada (Steel's Red Winter)..... | 1 50 | 1 00 |
| 45—Rhode Island Greening..... | 1 50 | 1 00 |
| 46—Ribston Pippin..... | 1 50 | 1 00 |
| 47—Red Cheeked Pippin..... | 1 50 | 1 00 |
| 48—Roxborough Russet..... | 1 50 | 1 00 |
| 49—Salome..... | 1 50 | 1 00 |
| 50—Stark..... | 1 50 | 1 00 |
| 51—Spitzenburg..... | 1 50 | 1 00 |
| 52—Sutton Beauty..... | 1 50 | 1 00 |
| 53—Smith's Cider..... | 1 50 | 1 00 |
| 54—Scott's Winter..... | 1 50 | 1 00 |
| 55—Swaar..... | 1 50 | 1 00 |
| 56—Talman Sweet..... | 1 50 | 1 00 |
| 57—Utter's Red..... | 1 50 | 1 00 |
| 58—Waxen..... | 1 50 | 1 00 |
| 59—Wagener..... | 1 50 | 1 00 |
| 60—Wellington..... | 1 50 | 1 00 |
| 61—Winesap..... | 1 50 | 1 00 |
| 62—Wolf River..... | 1 50 | 1 00 |
| 63—Wallbridge..... | 1 50 | 1 00 |
| 64—Winter of St. Lawrence..... | 1 50 | 1 00 |
| 65—York Imperial..... | 1 50 | 1 00 |
| 66—Vandevere (New York)..... | 1 50 | 1 00 |
| 67—Any other variety of winter apples, correctly named. | 1 50 | 1 00 |
| 68—Best collection of fall and winter apples, 3 of each variety, correctly named..... | 3 00 | 2 00 |
| 69—Heaviest 12 apples, varieties named..... | 1 50 | 1 00 |
| 70—Best packed box of apples for shipping..... | 4 00 | 2 50 |
| CRAB APPLES—TWELVE OF EACH. | | |
| 71—General Grant..... | 1 50 | 1 00 |
| 72—Hyslop..... | 1 50 | 1 00 |
| 73—Martha..... | 1 50 | 1 00 |
| 74—Montreal Beauty..... | 1 50 | 1 00 |
| 75—Siberian (Yellow)..... | 1 50 | 1 00 |
| 76—Transcendent..... | 1 50 | 1 00 |
| 77—Van Wyck..... | 1 50 | 1 00 |
| 78—Any other variety of crab apples..... | 1 50 | 1 00 |
| GRAPES—THREE BUNCHES OF EACH. | | |
| 79—Black or Purple..... | 1 50 | 1 00 |
| 80—Red..... | 1 50 | 1 00 |
| 81—White or Green..... | 1 50 | 1 00 |
| PEACHES—SIX OF EACH. | | |
| 82—Alexander..... | 1 50 | 1 00 |
| 83—Champion..... | 1 50 | 1 00 |
| 84—Crawford..... | 1 50 | 1 00 |
| 85—Fitzgerald..... | 1 50 | 1 00 |
| 86—Any other variety of peach..... | 1 50 | 1 00 |
| SUMMER PEARS—SIX OF EACH. | | |
| 87—Bartlett..... | 1 50 | 1 00 |

SECOND.
 \$ 1 00
 1 00
 1 00
 1 00
 1 00
 1 00
 1 00
 1 00
 1 00
 1 00
 1 00
 1 00
 1 00
 1 00
 1 00
 1 00
 1 00
 1 00
 1 00
 1 00
 1 00
 1 00
 1 00
 1 00
 1 00
 1 00
 1 00
 2 00
 1 00
 2 50
 1 00
 1 00
 1 00
 1 00
 1 00
 1 00
 1 00
 1 00
 1 00
 1 00
 1 00
 1 00
 1 00
 1 00
 1 00
 1 00
 1 00
 1 00
 1 00
 1 00
 1 00
 1 00
 1 00
 1 00
 1 00
 1 00
 1 00
 1 00
 1 00



Patronize Home Industry.

SMOKE

Kelowna Cigars

Manufactured From

NATIVE - TOBACCO.



Write for Prices on

Every Variety of Fresh and Dried Fruits

Superior to California's.



Kelowna Shippers Union Co.

LIMITED.

KELOWNA, - - - B.C.



| CLASS. | FIRST. | SECOND. |
|--|--------|-----------------------|
| 88—Clapp's Favorite..... | 1 50 | 1 00 |
| 89—Any other variety summer pears..... | 1 50 | 1 00 |
| AUTUMN PEARS—SIX OF EACH. | | |
| 90—Anjou (Beurre d' Anjou)..... | 1 50 | 1 00 |
| 91—Beurre Boasock..... | 1 50 | 1 00 |
| 92—Dempsey..... | 1 50 | 1 00 |
| 93—Duchesse d' Angouleme..... | 1 50 | 1 00 |
| 94—Flemish Beauty..... | 1 50 | 1 00 |
| 95—Idaho..... | 1 50 | 1 00 |
| 96—Keefer's Hybrid..... | 1 50 | 1 00 |
| 97—Louise Bonne de Jersey..... | 1 50 | 1 00 |
| 98—Sechel..... | 1 50 | 1 00 |
| 99—Sheldon..... | 1 50 | 1 00 |
| 100—Swan Orange..... | 1 50 | 1 00 |
| 101—Any other variety Autumn pear..... | 1 50 | 1 00 |
| WINTER PEARS—SIX OF EACH. | | |
| 102—Lawrence..... | 1 50 | 1 00 |
| 103—Winter Nelis..... | 1 50 | 1 00 |
| 104—Any other variety Winter pear..... | 1 00 | 1 50 |
| PLUMS—TWELVE OF EACH. | | |
| 105—Abundance..... | 1 50 | 1 00 |
| 106—Bradshaw..... | 1 50 | 1 00 |
| 107—Coe's Golden Drop..... | 1 50 | 1 00 |
| 108—French Prune..... | 1 50 | 1 00 |
| 109—German Prune..... | 1 50 | 1 00 |
| 110—Grand Duke..... | 1 50 | 1 00 |
| 111—Gneil..... | 1 50 | 1 00 |
| 112—Imperial Gage..... | 1 50 | 1 00 |
| 113—Glass Seedling..... | 1 50 | 1 00 |
| 114—Italian Prune..... | 1 50 | 1 00 |
| 115—Jefferson..... | 1 50 | 1 00 |
| 116—Lombard..... | 1 50 | 1 00 |
| 117—Monarch..... | 1 50 | 1 00 |
| 118—McLaughlin..... | 1 50 | 1 00 |
| 119—Peach Plum..... | 1 50 | 1 00 |
| 120—Pond's Seedling..... | 1 50 | 1 00 |
| 121—Saunders..... | 1 50 | 1 00 |
| 122—Shippers Pride..... | 1 50 | 1 00 |
| 123—Silver Prune..... | 1 50 | 1 00 |
| 124—Smith's Orleans..... | 1 50 | 1 00 |
| 125—Tenant Prune..... | 1 50 | 1 00 |
| 126—Washington..... | 1 50 | 1 00 |
| 127—Yellow Gage, Peters..... | 1 50 | 1 00 |
| 128—Yellow Egg..... | 1 50 | 1 00 |
| 129—Any other variety plums..... | 1 50 | 1 00 |
| 130—Best collection of fruit, separate exhibit, varieties correctly named. | | (See Special Prizes.) |

All fruit shown must be properly classified by name, and must be grown by the exhibitor.

No fruit shall be shown unless in good sound condition.
Early fruits may be exhibited in fluid, if uncooked.

SECOND.

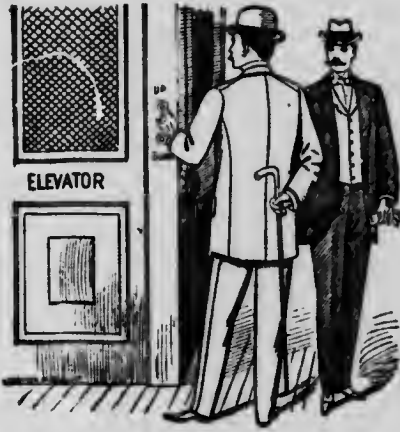
1 00
1 00

1 00
1 00
1 00
1 00
1 00
1 00
1 00
1 00
1 00
1 00
1 00

1 00
1 00
1 50

1 00
1 00
1 00
1 00
1 00
1 00
1 00
1 00
1 00
1 00
1 00
1 00
1 00
1 00
1 00
1 00
1 00
1 00
1 00
1 00
1 00
1 00
1 00
1 00
1 00

Prizes.)
grown



Furnishing News. ::

We are ready with
a large stock of

**Men's,
Youths' and
Boys'
Furnishings,
Ready-to-
Wear
Clothing.**

Boots and
Shoes,
Hats and
Caps,
Rubber
Goods.

BLAIR,
THE **Clothier,**

Main St., Kamloops.

**DIVISION J.
MANUFACTURER'S AND INDUSTRIAL DEPARTMENT.**

| CLASS. | FIRST. | SECOND. |
|--|---------|---------|
| a1—Horse shoes, best collection, Provincial make..... | \$ 4 00 | 2 00 |
| b2—Best assortment of wagons, ploughs, buggies, farm implements, etc..... | 10 00 | |
| c3—Best assortment of harness and saddles, consisting of one set of light double harness, one set of heavy double harness, one set of single buggy harness and three saddles, made in British Columbia.... | \$10 00 | |
| d4—Best assortment of tailor-made goods, made in Kamloops, not less than 3 suits and an overcoat and a lady's suit..... | | 7 00 |

SPECIAL NOTICE AS TO PRIZES.

No charge is made for space, but entry must be made of each exhibit.

Articles in this department will be received for exhibition only. They must, however, be entered with the Secretary in the same manner as articles in other classes.

In response to enquiries made of the manufacturers of the country it appears to be the desire of a very large majority that prizes should not be offered in the general line of manufactures. It will, however, be at the option of the judges to recognize by the awarding of medals or diplomas any exhibit where the extent or merit of the same would seem to call for special recognition.

ENGINES, WOOD AND IRON WORKING MACHINERY, MILL MACHINERY, FIRE AND SERVICE PUMPS, ELECTRICAL APPLIANCES, ETC.

CLASS

1. Steam engines and connections and parts thereof.
2. Wood-working machinery of all descriptions.
3. Iron working machinery of all descriptions.
4. Mill machinery and appliances of all descriptions.
5. Portable saw mill in operation, saw mill machinery and tools for same.
6. Fire engines, portable and stationery, steam, hand and chemical; fire apparatus, escapes, extinguishers, etc.
7. Pumps, wind, steam and power; well force and steam cistern pumps.
8. Boot and shoe making machinery, brick machines, hoists, and other machinery not coming under the heading of the previous sections.
9. All kinds of electrical inventions and appliances, dynamos, lamps, heating and cooking apparatus, etc.

CARRIAGES, ETC.

Exhibitors in this department must confine their entry to one vehicle in each distinct line, as space will only be granted to that extent.

10. Display of light work, embracing folding or roll over top seat and top phaetons, open and top buggies, tea carts, rumble phaetons, democrats and all kinds of single horse buggies, dog carts, sulkyies, etc.
11. One and two horse team and market wagons, express wagons, carts, lorries, sleighs, etc.
12. Bicycles and tricycles.

AGRICULTURAL IMPLEMENTS.

13. Grain and seed drills of all kinds.
14. Mowing machines.
15. Reaping machines.
16. Horse and steam power threshers and separators.
17. Fanning mills.

Buying Groceries Right!

Is the secret of being able to sell Good Goods at lower prices than others charge. It is a saving to us, and buying Groceries here will be a saving to you.

Hopkins AND McLean,
THE LEADING GROCERS.

Best Teas and Coffees in the city.

R. H. Peardon, Accountant and Insurance Agent.

— REPRESENTING —

B. C. Permanent Loan and Savings Co.,
of Vancouver.

Caledonian Fire Insurance Co.,
of Edinburgh.

Mutual Life Insurance Co., of New York.

Manchester Assurance Co.

Canadian Railway Accident Insurance Co., of Ottawa.

Office—Opposite K. M. & A. A. Hall, Kamloops.

DRAYING.

TEAMING.

JAMES BLAIR

Will do your teaming cheaper and prompter than
any other person in the city.

Furniture moved. Baggage delivered. Exhibits taken to and from
the Exhibition. Heavy teaming of all kinds. Wood for sale.

Stables: Near Grand Pacific Hotel, KAMLOOPS, B. C.

CLASS.

18. Hay working implements.
19. Portable grist mills.
20. Grain and corn crushers and grinders.
21. Horse powers of all kinds.
22. Machines for cutting and pulping roots.
23. Straw cutters.
24. Steam plows and cultivators.
25. Iron and wooden plows of all kinds.
26. Horse shoes and cultivators.
27. Iron and wooden harrows.
28. Iron and wooden land rollers.
29. Ensilage corn cutter and elevator.
30. Potato Diggers.
31. Portable engines.
32. Traction engines.
33. Manure drill, stump extractor, corn shellers, planters and harvesters, cider mills and presses, and all other machines and implements used for agricultural purposes not included in the above list.

DAIRY MACHINERY.

34. Cream separators.
35. Powers suitable for dairy purposes.
36. Milk testers.
37. Collection of dairy utensils.

MISCELLANEOUS.

BOATS AND APPLIANCES.

39. Exhibit of pleasure boats and skiffs.
40. Canoes, Wood, assortment of.
41. Sculls, oars and paddles.

HARDWARE, TOOLS, CUTLERY.

42. Fire and burglar-proof safes, vault doors and bank lock combinations.
43. Counter and platform scales.
44. Table and other cutlery, razors, etc.
45. Firearms and sporting goods.
46. Cut and pressed nails, screws, bolts, rivets and washers.
47. Machinists' and mechanical engineers' tools.
48. Edge tools, saws and chopping axes.
49. Spades, hoes, picks, shovels, etc.
50. Hay, manure, and other forks, and agricultural tools.
51. Scythes and lawn mowers.
52. Locks and keys, files, horse shoes, and other manufactured iron works, etc.

GATES AND FENCING.

53. Specimens of farm and other fencing.
54. Common and self-acting farm and other gates.

GAS AND ELECTRIC LIGHTING FIXTURES AND WIRE WORK.

55. Gas, electric and kerosene fixtures of all kinds.
56. Plumbers' and engineers' brass works.

GOLDSMITHS' AND SILVERSMITHS' WORK, JEWELRY, ETC.

57. Sterling silver flat and hollow ware, electro-plated ware, and nickel-plated ware, etc.; medals, gold and silver chains and lockets, bracelets, necklets; ladies' and gents' gold suites; watches, clocks, diamond settings, gold and silver leaf, etc.



FROST & WOOD

No. 8 Mower.

All the latest
improvements.

**Simple, Economical, Strong,
Comfortable, Durable.**

Quality guaranteed, and backed
up by our warranty.

Fully illustrated Catalogue on
application.

Northwest
Branch **WINNIPEG, MAN.**

HERE ARE
12 Good Points

And there are others.

You will get them all when you
buy a No. 8.

SERRATED STEEL LEGER PLATES.
ROLLER and BALL BEARING throughout.
HEAVY BRASS BUSHINGS for Crank Shaft.
HIGH DRIVE WHEELS and Wide Tread.
FINGER BAR smooth on top.
DIRECT UNDERDRAFT, no Side Draft.
PITMAN, Imported North Carolina hickory.
WIDE RANGE OF TILT.
FOOT and SPRING LIFT for bar.
FORGED STEEL KNIFE HEAD.
FORGED STEEL PITMAN JAWS.
NO WEIGHT ON HORSES' NECKS.

THE
Frost & Wood Company
LIMITED.

**W. B. Bailey & Co., Agents, Ashcroft,
B. C.**

SKILLED MECHANICAL WORK.

| CLASS | FIRST | SECOND |
|---|--------|--------|
| 58. Specimens of workmanship by mechanics..... | \$3 00 | \$2 00 |
| 59. Specimens of workmanship by apprentices..... | 3 00 | 2.00 |
| 60. Specimens of workmanship by non-mechanics.... | 3.00 | 2.00 |

REFRIGERATORS

61. Refrigerators for family, butchers', brewers', or grocers use.

INCUBATORS.

62. Incubators in operation.

63. Brooder in operation.

HOUSEHOLD FURNISHINGS.

64. Washing machines, mangles, clothes wringers, bird cages, lamps, sad irons, cinder sifters, cornices, and other house furnishing goods.

65. Corn brooms, brushes for painters and miscellaneous purposes.

66. Hollow wooden ware, wash tubs, pails, children's toys, children's express and pleasure wagons and sleighs; wheelbarrows and other wooden goods.

TENTS, BUNTING, ETC.

67. Tents, flags, bunting, camp bedsteads and equipages, sails for vessels, etc.

BOOTS, SHOES AND SHOEMAKERS' TOOLS, ETC.

68. Assortment of men's, women's and children's boots and shoes, machine or hand made, either for custom or wholesale trade.

69. Prepared calfskins, sheep, kids and cow hides, sheepskins, lining, glove kids, cardovan leather, leather bolting, sole leather, upper leather, upholsterer's leather, leather bolting, harness leather, leather for carriage work, and all kinds of leather used for manufacturing purposes.

HARNESS AND SADDLERY AND MATERIAL.

70. Harness for carriage, heavy draught or express horses, double and single; saddles, stirrups, whips, etc.; horse collars, horse blankets, kerseys for horse clothing, etc.

FURNITURE AND UPHOLSTERY.

71. Furniture of all kinds; drawing room, dining room and bed-room suites; office furniture; chairs, tables, mantles and over-mantles; pier and mantel mirrors; bed bottoms and mattresses, wall pockets and brackets, upholstering, etc.

GLASSWARE, EARTHENWARE, ETC.

72. Stained glass for churches or domestic purposes, embossed glass, bevelled cut glass, window and mirror glass, and all other descriptions of glassware.

73. Decorated stoneware and earthenware, white graniteware, cream-colored ware, stoneware, Rockinghamware, redware and pottery.

BOOK BINDING, PRINTING AND STATIONERY.

74. Bookbinding (blank book and letter press) in all styles of leather and cloth, pocketbooks, wallets, and fancy leather goods.

75. Letterpress printing, job printing—bill heads, letter heads, cards, legal forms; posters, plain, colored or ornamental.

76. Millboard, strawboard, writing, printing and blotting paper; paper bags, wrapping paper, wood pulp, etc.

77. Printing types, electrotyping, stereotyping, rubber and metal types, etc.

78. Lithographic work, plain and in colors, show cards, etc.

THE CANADIAN BANK OF COMMERCE.

WITH WHICH IS AMALGAMATED

THE BANK OF BRITISH COLUMBIA.

Head Office—Toronto.

| | | | | |
|--------------------------|---|---|---|---------------|
| PAID-UP CAPITAL, | : | : | : | \$8,200,000 |
| RESERVE FUND, | : | : | : | 2,000,000 |
| Aggregate Resources Over | | | | \$65,000,000. |

HON. GEO. A. COX---President.

B. E. WALKER,
General Manager.

J. H. PLUMMER,
Asst. Gen. Manager.

Branches and Agencies in all principal cities and towns of the Dominion of Canada; also in London, Eng., and throughout Scotland and Ireland, and Australasia and Honolulu.

YUKON DISTRICT: Dawson, White Horse.

IN THE UNITED STATES: New York, N. Y.; San Francisco, Cal.; Seattle, Wash.; Portland, Ore.; Skagway, Alaska.

GENERAL BANKING BUSINESS TRANSACTED.

GENERAL STATEMENT—31st May, 1901.

LIABILITIES:

| | | |
|---|-----------------|------------------------|
| Notes of the Bank in circulation—Issues of Bank of Commerce | \$5,157,773 00 | |
| Issues of Bank of B.C. | 288,990 00 | \$ 5,446,773 00 |
| Deposits not bearing interest | \$12,199,832 90 | |
| Deposits bearing interest, including interest accrued to date | 35,804,766 08 | \$48,004,599 58 |
| Balances due to other Banks in Canada | | \$ 284,438 63 |
| Balances due to other Banks in foreign countries | | 445,800 39 |
| Balances due to Agents in Great Britain | | 2,963,512 59 |
| Dividends unpaid | | 2,186 58 |
| Dividend No. 68, payable 1st June | | 268,333 33 |
| Capital paid up | \$8,000,000 00 | |
| Reserve | 2,000,000 00 | |
| Balance of profit and loss account carried forward | 117,878 03 | 10,117,876 03 |
| | | <u>\$67,553,578 13</u> |

ASSETS:

| | | |
|---|----------------|------------------------|
| Coin and bullion | \$1,798,357 07 | |
| Dominion notes | 1,408,230 50 | \$ 3,203,577 57 |
| Deposit with Dominion Government for security of note circulation | | \$ 294,000 00 |
| Notes of and cheques on other Banks | | 1,968,112 76 |
| Balances due by other Banks in Canada | | 158,925 89 |
| Balances due by Agents of the Bank and other Banks in foreign countries | | 1,063,976 22 |
| Government bonds, municipal and other securities | | 10,367,229 68 |
| Call and short loans on stocks and bonds | | 7,295,451 80 |
| | | <u>\$24,469,274 01</u> |
| Other current loans and discounts | 41,555,151 37 | |
| Overdue debts (loss fully provided for) | 300,064 17 | |
| Real estate (other than Bank premises) | 173,750 50 | |
| Mortgages | 117,472 38 | |
| Bank premises | 1,000,000 00 | |
| Other assets | 37,825 70 | |
| | | <u>\$67,553,578 13</u> |

W. H. PEGRAM, - - Manager Kamloops Branch.

CLASS.

79. Rubber stamps, seal engraving, etc.
80. Anatomical models for art schools.

PAPER HANGING, SHADE BLINDS, ETC.

81. Printed paper hangings, flock, marble and veined paper, etc.; varnished and enamelled paper, imitations of wood and leather, paper hangings in decorations, window shades and blinds, painted and printed, etc.

GROCERIES AND PROVISIONS.

82. Wheat, flour, cracked wheat, buckwheat flour, pot and pearl barley, oatmeal, cornmeal, starch, baking powder, yeast, wedding cakes and confectionery of all descriptions; biscuits, baker's bread, etc.

83. Canned, dried and preserved fruits and vegetables of all descriptions; jams and jellies.

84. Cured hog products, consisting of hams and bacon, smoked, salted and pickled, including lard.

85. Tinned and potted meats of all kinds.

86. Salted and dried fish and fish preserved in oil.

87. Coffees and spices, chicory and cocoa, chocolate and other aromatic beverages.

88. Sugar (dry, lump, granulated, ground and yellow), maple sugar and beet sugar.

89. Cordials and syrups.

90. Tobaccos and cigars.

WINES, BEER, ETC.

91. Native Wines, beer, ale and aerated waters.

BUILDING WORK AND MATERIAL.

92. Bricks, drain, tiles, roofing slates, cements, marble and granite, carved stonework, etc.

93. Machine made doors, sashes and Venetians, machine wrought mouldings, stair newels, and other woodwork for building purposes.

94. Fresco decoration, plaster center pieces, cornices and brackets, etc., mantle pieces in marble and marbleized slate, etc.

95. Sign writing and wood graining; galvanized iron work for building purposes, and other specimens of workmanship and material for building purposes.

KNITTING AND SEWING MACHINES.

96. Knitting machines, hand and power, for family and manufacturing purposes.

97. Sewing machines, hand and power, for family and manufacturing purposes.

MUSICAL INSTRUMENTS.

98. Organs—cabinet, parlor and church.

99. Pianos—grand, square and upright.

100. Band instruments—brass, reed and stringed.

101. Drums and other musical instruments of all kinds.

WOOLLEN GOODS.

102. Alpacas, blankets, rugs, druggets, flannels, shawls, Winceys, and yarns of all kinds.

103. Cashmeres, broadcloths, doeskins, etofas, naps, pelous, leavers, presidents, coatings, serges, tweeds, worsted cloths, and felt cloths.

KNITTED AND WOOLLEN GOODS.

104. Cardigan jackets, men's, ladies' and children's shirts and trousers; men's, ladies' and children's hose and hand hose; mittens, scarves, and shawls, etc.

Established 1900. Capacity 40,000 Feet Per Day.

Kamloops Sawmill =

All Kinds of

**Rough ^{AND} Dressed Lumber
Shingles, Lath, Doors,
Windows, Sash.**

**Slabs and Light Wood
FOR SALE CHEAP.**

All orders receive prompt attention.

COTTON GOODS.

CLASS.

105. Bags and beam wraps.
106. Cotton sheeting, bleached and unbleached.
107. Counterpanes, white and colored.
108. Ducks and denims.
109. Gingham, plain and fancy.
110. Shirtings, striped and fancy wove.
111. Tickings, striped and checked.
112. Prints, assortment.
113. Cotton flannels, bleached and unbleached.
114. Apron checks and permanent linings.
115. Beetle twills, black casbans, sateen jeans.
116. Twill pocketings, chester stouts.
117. Brown dressed Hollands, plain and fancy muslins.
118. Yarns, white and colored.
119. Carpet warps, knitting cotton, etc.

CARPETS, MATS, ETC.

120. Carpets—Union, Wool, Tapestry, Brussels and Wilton.
121. Cocoa matting, wool mats, dusters, etc.

WEARING APPAREL.

122. Cloth caps, felt and silk hats, etc.
123. Overcoats, Canadian cloth.
124. Gentlemen's and boy's suits, Canadian cloth.
125. Ties and scarfs, collars and cuffs.
126. Ladies' bonnets and hats, mantles and jackets, etc.
127. Ladies' and infants, underclothing, corsets, etc.
128. Gloves and mitts—kid, leather and woollen.
129. Gentleman's white and fancy flannel shirts.
130. Silk sewing and twists, silk and satin ribbons.
131. Buttons of various kinds.
132. Re-dyed goods in silks and woollen, etc.
133. Ostrich feathers, new and re-dyed.

FLAX AND HEMP GOODS.

134. Bags, cordage, twine and linens.
135. Flax, in its various stages of manufacture, from straw to bleached lint.

CHEMICALS, DRUGS, PAINTS, ETC.

136. Chemicals, assortment of; chemical crystals, etc.
137. Pharmaceutical preparations, assortment of.
138. Petroleum products, other than oil, including Aniline dyes.
139. Soaps, laundry and toilet.
140. Glue and gelatine, assortment of.
141. Mineral acids, samples of.
142. Colors in powder, ground in oil, liquid paints and white lead ground in oil, etc., in trade packages.
143. Neat's foot and other animal oils.
144. Linseed oil, raw and boiled; illuminating and lubricating oils.
145. Toilet and perfumery requisites.
146. Fruit essences and flavoring extracts, artificial; fruit flavoring from fruits, etc.
147. Druggists' glassware, etc.
148. Fruit extracts of medical herbs, assortment of.
149. Rare drugs and chemicals, assortment of.
150. Varnishes and japans.

R. MacKAY;
BUILDER AND CONTRACTOR,
Kamloops, B.C.

Plans and Specifications Furnished.
Work Guaranteed.

JOHNSTON & CO., LIMITED,
Builders and Contractors.

Owners of the North River Brick Yards.

Brick, Plaster, Lime, Cement and Hair For Sale.

Estimates furnished for buildings and repairs.



Kamloops Harness Emporium.

The largest and most complete stock of Saddle and Harness in the Interior. Prompt attention paid to mail orders. Catalogue on application.

D. C. McLAREN, Prop.

FURNITURE *Of Every Description.*

A VERY LARGE ASSORTMENT OF

Linoleums and Carpets, including Inlaid Linoleums.

Window Shades, Blankets and Comforters.

M. P. GORDON, Kamloops.

CLASS.

151. Medical and surgical bandages.
 152. Shoe blacking and other leather dressings.
 153. Medical sugar-coated and gelatine-coated pills, in usual packages.
 154. Extra entries.

MATHEMATICAL AND SURGICAL INSTRUMENTS.

155. Mathematical and engineering instruments.
 156. Optical instruments, including microscopes and accessories.
 157. Chemical apparatus and glassware, collection.
 158. Artificial limbs, trusses and orthopedic appliances.
 159. Surgical instruments, collection of.
 160. Models of invention.
 161. Electr. Therapeutic appliances.
 162. Dental instruments and appliances.
 163. Extra entries.

STOVES AND RANGES.

164. Heating and cooking stoves and ranges, all patterns and sizes.
 165. Parlor grates, portable and stationary; hot air furnaces, steam and hot water heating apparatus; coal oil stoves, gas stoves, etc.
 166. Display of kitchen utensils.

CASTINGS, ETC.

167. Iron castings of all kinds; monuments, fountains, registers and ventilators; cresting, fencing; casting for building purposes and bridge work; plain and enamelled hollow ware; cast iron stable fittings, etc.

 DIVISION K.

| CLASS. | FLORAL. | FIRST. | SECOND. |
|---|---------|---------|---------|
| 1—Best collection of Begonias, not less than five varieties, in pots..... | | \$ 2 00 | \$ 1 00 |
| 2—Best collection of Fuchsias, not less than five varieties, in pots..... | | 1 50 | 75 |
| 3—Best collection of Coleus, not less than four varieties, in pots..... | | 1 50 | 75 |
| 4—Best collection of Geraniums, not less than five varieties, in pots..... | | 2 00 | 1 00 |
| 5—Best collection of Ferns, not less than three varieties, in pots..... | | 1 00 | 50 |
| 6—Best collection of Heliotropes, not less than three varieties, in pots, in bloom..... | | 1 00 | 50 |
| 7—Best collection of Hydrangeas, not less than three varieties, in pots, in bloom..... | | 1 50 | 75 |
| 8—Best collection of Abutilons, not less than five varieties, in pots..... | | 2 00 | 1 00 |
| 9—Best collection of Roses, not less than three varieties, in pots, in bloom..... | | 1 50 | 1 00 |
| 10—Best collection of Caeti, not less than five varieties, in pots..... | | 2 00 | 1 00 |
| 11—Best two Hanging Baskets..... | | 1 00 | 50 |
| 12—Largest collection of tropical plants, not less than ten varieties, in pots..... | | 3 00 | 1 00 |
| 13—Best collection of house plants, not less than 30 plants, in pots..... | | 5 00 | 2 50 |
| 14—Best Bouquet of Cut Flowers..... | | 1 50 | 75 |
| 15—Best Bouquet of Wild Flowers..... | | 1 00 | 50 |
| 16—Best Gentlemen's Buttonhole Bouquet..... | | 75 | 50 |

J. BEATON,

Ward Block, Opposite K.M. & A.A. Hall,

Kamloops, - - B. C.

If you want bargains while in town during the Fair don't forget to call at Beaton's.

OUR GUARANTEE—The goods we sell are worth every penny we ask. There's no extravagance here; no trickery; no subterfuge. We ask you to take away the goods and get anywhere you can the best look and judgment on them. If they are not to your liking or don't agree in every respect with what has been said of them, we insist that you come back and get your money. That means you run no possible risk in buying here.

It Means Your Money Back If You Don't Want It.

We want everybody satisfied with everything they buy here at any time, and the more you know about goods and prices the more certain you will be to spend your money here.

See Our Millinery!

See Our Dress Goods!

See Our Clothing!

See Our Shoes!

J. BEATON, Kamloops.

ual packages.

ories.

d sizes.
s, steam and

registers and
bridge works,

T. SECOND.

00 \$ 1 00
50 75
50 50
00 1 00
00 50
00 50
00 1 00
50 1 00
00 1 00
00 50
00 1 00
00 2 50
50 75
00 50
75 50

| CLASS. | FIRST. | SECOND. |
|---------------------------------------|--------|---------|
| 17—Largest Variety of Cut Asters..... | 1 00 | 50 |
| 18— " " " Carnations..... | 1 00 | 50 |
| 19— " " " Dahlias..... | 2 00 | 1 00 |
| 20— " " " Pansies..... | 50 | 25 |
| 21— " " " Phlox..... | 1 00 | 50 |
| 22— " " " Petunias..... | 75 | 50 |
| 23— " " " Roses..... | 1 50 | 1 00 |
| 24— " " " Stocks..... | 75 | 50 |

=====

DIVISION L.

| CLASS. | FIRST. | SECOND. |
|---|---------|---------|
| 1—Netted d'oyleys, 6 (set of)..... | \$ 1 00 | \$ 50 |
| 2—Set of d'oyleys, 6, embroidered..... | 1 00 | 50 |
| 3—Sideboard Scarf..... | 1 00 | 50 |
| 4—Bureau Scarf..... | 1 00 | 50 |
| 5—Assortment of Lace, hand made..... | 2 00 | 1 00 |
| 6—Table Cover, embroidered..... | 1 00 | 50 |
| 7—Fancy Drape, any kind..... | 1 00 | 50 |
| 8—Skirt, flannel, embroidered..... | 1 00 | 50 |
| 9—Photo Frame, embroidered..... | 1 00 | 50 |
| 10—Kensington, embroidered..... | 1 00 | 50 |
| 11—Tatting..... | 1 00 | 50 |
| 12—Best Sofa Pillow..... | 1 00 | 50 |
| 13—Patchwork Quilt..... | 1 00 | 50 |
| 14—Bedroom Slippers..... | 1 00 | 50 |
| 15—Drawn Work..... | 1 00 | 50 |
| 16—Table Centre..... | 2 00 | 1 00 |
| 17—Best Tablecloth, embroidered..... | 2 00 | 1 00 |
| 18—Tray Cloths..... | 1 00 | 50 |
| 19—Rag Mat..... | 1 00 | 50 |
| 20—Best Drawn Work, Tablecloth..... | 2 00 | 1 00 |
| 21—Plain Sewing, any kind..... | 2 00 | 1 00 |
| 22—Buttonholes..... | 1 00 | 50 |
| 23—Darned Stocking..... | 1 00 | 50 |
| 24—Darning, on linen or cotton..... | 1 00 | 50 |
| 25—Knitted Stockings, wool..... | 2 00 | 1 00 |
| 26—Tea Cosy, any kind..... | 2 00 | 1 00 |
| 27—Pillow Shams..... | 2 00 | 1 00 |
| 28—Set of Table Mats..... | 1 00 | 50 |
| 29—Hem Stitching..... | 1 00 | 50 |
| 30—Applique Work..... | 1 00 | 50 |
| 31—Honiton Lace..... | 2 00 | 1 00 |
| 32—Battenburg Lace..... | 2 00 | 1 00 |
| 33—Point Lace..... | 2 00 | 1 00 |
| 34—Blue Delft Embroidery..... | 1 00 | 50 |
| 35—Cut Work or Roman Embroidery..... | 1 00 | 50 |
| 36—Jewel Embroidery..... | 1 00 | 50 |
| 37—Pin Cushion, any kind..... | 1 00 | 50 |
| 38—Fancy Knitting, silk or wool..... | 1 00 | 50 |
| 39—Outline Work..... | 1 00 | 50 |
| 40—Best Knitted or Crochet Counterpane..... | 2 00 | 1 00 |
| 41—Best Mountmelbek Work..... | 2 00 | 1 00 |
| 42—Fancy Apron, any kind..... | 1 00 | 50 |
| 43—Crochet Work..... | 2 00 | 1 00 |
| 44—Best Embroidery on Blotting Cloth..... | 1 00 | 50 |

SECOND.
50
50
1 00
25
50
50
1 00
50

SECOND.
50
50
50
50
1 00
50
50
50
50
50
50
50
50
50
1 00
1 00
50
50
1 00
1 00
50
50
50
1 00
1 00
1 00
50
50
50
50
50
1 00
1 00
50
50
50
50
1 00
1 00
50

Coal! Coal!

**The New Vancouver
Coal Mining and Land Co.
LIMITED.**

(Formerly the Vancouver Coal Company.)

OFFERS FOR SALE

Nanaimo Coal
Used principally for gas and other domestic purposes.

Southfield Coal
An unequalled steam fuel.

New Wellington Coal
A bright clean-burning coal and a favorite fuel for the open grate.

Protection Island Coal (Upper Seam)
Similar in appearance and quality to the New Wellington, but is superior gas coal, and for general purposes will be preferred to all other coals produced on Vancouver Island.

Mined only by the New Vancouver Coal Company.

Wharves at Departure Bay, Nanaimo and Protection Island, at each of which ships of the deepest draught can load at all times.

S. M. ROBINS, Superintendent.

| CLASS. | FIRST. | SECOND. |
|---|--------|---------|
| 45—Best Darned Stocking by child under 15 years..... | 1 00 | 50 |
| 46—Best Dressed Doll by child under 12 years..... | 1 00 | 50 |
| 47—Best Huckaback Darning by child under 15 years.... | 1 00 | 50 |
| 48—Best Plain Sewing by child under 15 years..... | 1 00 | 50 |
| 49—Best Collection of Ladies' Work..... | 5 00 | 2 50 |

All articles exhibited in this Division to be the bona fide work of the exhibitor, and to have been made by the exhibitor. Exhibit 49 to be entirely distinct from the other exhibits in the same Division.

Prizes will not be awarded to exhibits which have previously taken prizes, with the exception of No 49.

DIVISION M.

| CLASS. FINE ARTS, ETC—ORIGINAL WORK. | FIRST. | SECOND. |
|--|---------|---------|
| 1—Drawing, crayon or pencil..... | \$ 2 00 | \$ 1 00 |
| 2—Drawing, pen and ink..... | 2 00 | 1 00 |
| 3—Oil Painting, landscape or marine..... | 2 00 | 1 00 |
| 4—Oil Painting, still life..... | 2 00 | 1 00 |
| 5—Water Color, landscape or marine..... | 2 00 | 1 00 |
| 6—Water Color, still life..... | 2 00 | 1 00 |
| 7—Fruit or Flowers, from nature..... | 2 00 | 1 00 |
| 8—Wood Carving..... | 2 00 | 1 00 |
| 9—China Painting..... | 2 00 | 1 00 |

COPIES.

| | | |
|--|------|------|
| 10—Drawing, crayon or pencil..... | 1 00 | 50 |
| 11—Drawing, pen and ink..... | 1 00 | 50 |
| 12—Oil Painting, landscape, etc..... | 1 00 | 50 |
| 13—Oil Painting, still life..... | 1 00 | 50 |
| 14—Water Colors, landscape, etc..... | 1 00 | 50 |
| 15—Water Colors, still life..... | 1 00 | 50 |
| 16—Fruit or flowers..... | 1 00 | 50 |
| 17—Decorative Painting..... | 1 00 | 50 |
| 18—Penmanship, boy 13 years or under..... | 1 00 | 50 |
| 19—Penmanship, girl 13 years or under..... | 1 00 | 50 |
| 20—Best Collection of Photographs..... | 2 00 | 1 00 |
| 2 —Penmanship, boy under 9 years..... | 1 00 | 50 |
| 22—Penmanship, girl under 9 years..... | 1 00 | 50 |

The Managing Committee are instructed to reject any improper or unworthy picture.

The production of professionals and amateurs will be classed and hung separately.

Amateurs are understood to be those who do not paint or teach for a livelihood or profit, or habitually sell or offer for sale their productions, and who have not at any time heretofore done so. Articles can only be entered in one class.

Evidence of originality to be furnished by the exhibitor whenever required by the judges or the committee.

No work will be awarded a money prize in the Fine Arts Department that has once taken a prize at a previous Kamloops Agricultural Association Exhibition, but may show for a diploma.



SECOND.
50
50
50
50
2 50
k of the
9 to be
y taken

SECOND.
\$ 1 00
1 00
1 00
1 00
1 00
1 00
1 00
1 00
1 00
1 00

50
50
50
50
50
50
50
50
50
50
1 00
50
50

r or un-
d hung
sh for a
ns, and
entered
ver re-
artment
ociation

James Vair, Kamloops, B.C.

AGENT FOR

- The McClary's Famous Stoves and Ranges.
- The Sherwin-Williams Paints.
- The McCormick Harvesting Machinery.
- The Mohawk Chief Plows.
- The Hamilton Powder Co.

General Hardware, Plumbing, Heating & Iron Work.

Quality is remembered long after the price is forgotten.

CAMERON & MILTON,

Headquarters for **Wood, Coal, Hay and Grain.**

Sole Agents for G. E. Macdonald & Co.'s Wellington Soft Coal.
Dealers in Cumberland Blacksmiths' Coal.
Agents for Anthracite Hard Coal.
Agents for Brackman & Ker Rolled Oats.

Feed and Sale Stables. Light and Heavy Transfer.
Kamloops, B.C.

....Insure Your Property Against Fire....

— WITH THE —

SCOTTISH UNION AND NATIONAL INSURANCE COMPANY
ESTABLISHED 1824.

One of the Strongest Companies Financially in Existence.

CAPITAL \$30,000,000. ASSETS \$41,473,606.

Farm Property a Specialty.

T. H. LEEMING, - - Agent Kamloops, B. C.

SPECIAL PRIZE LIST.

- (BY HON. JAMES DUNSMUIR, M. P. P., PREMIER OF B. C., VICTORIA)
- 1—For best draught team in harness—Cash.....\$10 00
- 2—For best collection vegetables (varieties to be named), separate exhibit—Cash 5 00
- 3—For best collection grain (not less than 3 pounds in each sample)—Cash..... 5 00
- 4—For exhibitor taking greatest number of first prizes in Division L. (Ladies' Work)—Cash..... 5 00
- (BY W. A. GALLIHER, M. P., NELSON.)
- 5—For best bred game cock (not less than two to be shown)—Cash.. 10 00
- (BY THE WINDSOR SALT CO., LIMITED, OF WINDSOR, ONT)
- 6—For best 10 pound crock of butter—Cash..... 5 00
- 7—For best pound roll of fresh butter—Cash..... 2 50
- 8—For best exhibit of butter in pats or bricks—Cash..... 2 50
- (BY HON. SENATOR TEMPLEMAN, VICTORIA)
- 9—For best carriage team (driven in harness)—Cash..... 10 00
- (BY CANADIAN BANK OF COMMERCE, KAMLOOPS.)
- 10—For best five horses, raised by one exhibitor (any age.) Horses entered for this prize are eligible for entry in other classes—A silver medal valued at..... 25 00
- (BY THE BRACKMAN-KER MILLING Co, LIMITED, VICTORIA.)
- 11—For the purest and brightest sample of Timothy hay—Cash..... 5 00
- (BY R. MARPOLE, Esq., VANCOUVER.)
- 12—For best art collection (separate exhibit) by any one exhibitor—Cash..... 5 00
- (BY THE ANGLO-AMERICAN FIRE INSURANCE Co.)
- 13—For best display of Gent's Furnishings, Boots and Shoes, Hats and Caps, etc..... 5 00
- (BY THE COLUMBIAN, NEW WESTMINSTER)
- 14—For exhibitor taking greatest number of prizes in the Fruit Division—The Weekly Columbian one year..... 1 00
- 15—For best exhibit of butter in pats or rolls—The Weekly Columbian one year..... 1 00
- 16—For best loaf home-made bread—The Weekly Columbian one year 1 00
- (BY THE VANCOUVER WORLD PRINTING Co., VANCOUVER.)
- 17—For best pen Plymouth Rocks (3 hens and a cock)—The Daily World for one year..... 6 00
- (BY THE DAILY PROVINCE, VANCOUVER)
- 18—For best exhibit in Division H—Field Produce—(separate exhibit)—Prize the Daily Province for one year..... 5 00
- 19—For largest potato—Prize the Weekly Province for one year..... 2 00
- (BY G. C. TUNSTALL, Esq., KAMLOOPS.)
- 20—For best collection of peaches grown in North Yale—Cash..... 5 00
- (BY THE OKANAGAN FLOUR MILLS Co., ARMSTRONG, B. C.)
- 21—For the best loaf of bread made from the Company's Hungarian flour—Cash..... 7 50
- 22—For the best loaf of bread made from the Company's XXXX.

flour—Cash \$ 7 50

Each entry in this class must be accompanied by a certificate that the bread is made from the Okanagan Flour Mills Co.'s flour, same to be made by non professional baker.

(BY M. R. SMITH & Co., LIMITED, VICTORIA.)

23—For best young lady rider on horseback—Prize a box of fancy biscuits valued at..... 3 50

(BY THE COLONIST PRINTING AND PUBLISHING Co., VICTORIA.)

24—For best collection of potted plants—Prize the Daily Colonist for one year..... 10 00

(BY W. FORTUNE, Esq., TRANQUILLE.)

25—For best yearling Durham bull calf—Cash..... 5 00

(BY THE VERNON NEWS PRINTING AND PUB. Co., LTD., VERNON.)

26—For the exhibitor receiving the largest number of first prizes in fruit—Vernon News for one year..... 2 00

(BY JAMES AIRD, Esq., ROCKFORD, B. C.)

27—For best exhibit of white oats—First prize, cash..... 3 00

“ “ “ “ —Second prize, cash..... 2 00

28—For best tub or crock of butter (not less than 25 pounds)—First prize, cash..... 3 00

For best tub or crock of butter (not less than 25 pounds)—Second prize, cash..... 2 00

(BY MRS. W. J. ROPER, CHERRY CREEK.)

29—For the best drawn work (afternoon tea cloth)—Cash..... 5 00

30—For the best piece of plain sewing, by girl under 16 years of age. 2 50

31—For best dressed doll, by girl under 12 years of age..... 2 50

(BY J. T. WILKINSON, Esq., VANCOUVER)

32—For best Standard bred or roadster filly or entire horse (any age) sired by Colloquy No. 18,051—Cash..... 15 00

(BY McLENNAN, McFEELEY & Co., LTD., VANCOUVER.)

33—For largest and best collection of garden produce—A set of garden tools valued at..... 5 00

(BY REVELSTOKE HERALD PUBLISHING Co., LTD., REVELSTOKE.)

34—For the best Crochet work—One year's subscription to the Revelstoke Semi-Weekly Herald..... 2 00

(BY HUDSON'S BAY COMPANY, KAMLOOPS.)

35—For the best sample of Red Fyfe Wheat—100 pounds flour..... 3 00

(BY STONE & WELLINGTON, NURSERYMEN, TORONTO.)

36—For best collection of winter apples (properly named)—Nursery stock to the value of..... 6 00

37—For best collection of grains and Grasses on the straw (full length) Nursery stock to the value of..... 5 00

(BY THE VOGEL COMMERCIAL COLLEGE, VANCOUVER, B. C.)

38—For boy or girl taking the highest number of marks in the following commercial subjects: Arithmetic, grammar, spelling and composition (open to students in highest grades in any public or private school in North, West or East Yale or the Kootenays)—Prize, a scholarship at the Vogel Commercial College, Vancouver, valued at..... 55 00

[Students intending to compete for this prize should write to the Secretary of the exposition for full particulars as to date examination, etc.]

(BY THOS. McNAUGHT, J. P., MANAGING DIRECTOR OF THE HALCYON
HOT SPRINGS.)

- 39—For the best nosegay or bouquet of wild flowers collected and arranged by a girl attending school—Cash.....\$ 2 50
40—For the best nosegay or bouquet of wild flower collected and arranged by a boy attending school—Cash..... 2 50

(BY J. N. MOORE, ESQ., ROCKFORD, B. C.)

- 41—For the largest and best collection of house plants (not less than 30 plants)—Cash..... 5 00
42—For the best display of cut flowers—Cash..... 3 00
43—For the best table bouquet (arranged by a child under 12 years old)—Cash..... 2 00

(BY THE KELOWNA SHIPPERS' UNION CO., LTD., KELOWNA, B. C.)

- 44—For the best exhibit of tobacco grown in the Province of B. C.—Prize, 100 Kelowna Special Cigars valued at..... 6 50

(BY THE KAMLOOPS PTG. AND PUB. CO., LTD.)

- 45—For exhibitor taking greatest number of prizes for dairy cattle—The Kamloops Standard one year..... 2 00
46—For the best floral display by ladies—The Kamloops Standard one year..... 2 00
47—For the best collection of fruit—The Kamloops Standard one year..... 2 00

(BY THE INLAND SENTINEL, KAMLOOPS.)

- 48—For exhibitor taking most prizes for vegetables—Inland Sentinel one year..... 2 00
49—For exhibitor taking most prizes in grain and seeds—Inland Sentinel one year..... 2 00
50—For best box of apples, packed for shipping—Inland Sentinel one year..... 2 00

(BY IMPERIAL BREWING CO., KAMLOOPS.)

- 51—For tug-of-war, Rocky Mountain Rangers vs. All-Comers—Prize to winning side a keg of beer valued at..... 5 00

(BY HON. J. D. PRENTICE, M. P. P., VICTORIA.)

- 52—For the exhibitor taking the largest number of prizes in Division D, hogs, any breed—Cash..... 10 00
53—For the exhibitor taking the largest number of prizes for Holstein cattle—Cash..... 10 00
54—For the best specimen of penmanship by boy or girl between the ages of 10 and 12 years—Cash..... 5 00

(BY THE INLAND CIGAR MANUFACTURING CO. OF B. C.)

- 55—For the merchant making the largest and best exhibit in hardware, stoves, ranges, cutlery, etc—Prize, two boxes cigars.... 7 00

(BY THE BRITISH COLUMBIA MANUFACTURING CO., LTD., OF
NEW WESTMINSTER)

- 56—For the best box of apples exhibited (both fruit and packing considered)—Prize, 50 apple boxes, valued at..... 5 00

(BY MESSRS. WEILER BROS., VICTORIA.)

- 57—For the best collection of lace and tatting (not less than twelve pieces)—Prize, an easy chair, valued at..... 15 00

(BY J. P. SHAW, ESQ., SHUSWAP, B. C.)

- 58—For lady making greatest number of exhibits in Divisions L. and M.—Cash.....\$ 7 50

- 59—For lady taking greatest number of prizes in Division L—Cash.. \$ 5 00
Exhibitors competing must file with the secretary a certified statement giving the exact number of exhibits brought to the exhibition.
(BY MESSRS. SMITH BROS., KAMLOOPS AND VERNON.)
- 60—For boy or girl between the ages of 12 and 17 correctly filling out the following commercial forms: 1 cheque, 2 promissory note, 3 receipt, 4 draft, 5 I. O. U. 6 bank deposit slip, 7 bill head—Prize a fountain pen valued at..... 2 00
(BY F. S. REYNOLDS, ESQ., EDITOR ASHCROFT JOURNAL.)
- 61—For the largest pumpkin—Prize one year's subscription to the Ashcroft Journal..... 2 00
(BY HON. R. MCBRIDE, M. P. P., VICTORIA)
- 62—For best brood of thoroughbred chickens (any breed) hatched in 1901—Cash..... 5 00
(BY J. H. MCPHERSON, MERCHANT TAILOR, KAMLOOPS)
- 63—For best pair thoroughbred White Leghorns—Prize a fancy vest valued at. 7 00
(BY THE NEWS ADVERTISER, VANCOUVER)
- 64—For best collection of preserved fruit—Prize the Weekly News-Advertiser for one year..... 2 00
- 65—For exhibitor taking greatest number of prizes in Division H—Prize the Weekly News-Advertiser one year..... 2 00
- 66—For best yearling colt—Prize the Weekly News-Advertiser for one year 2 00
- 67—For heaviest apple, variety named—Prize the Weekly News-Advertiser for one year..... 2 00
- 68—For best packed box of apples for shipping—Prize the Weekly News-Advertiser for one year..... 2 30
- 69—For the largest squash—Prize the Weekly News-Advertiser for one year..... 2 00
(BY DR. W. J. CURRY, DENTIST, KAMLOOPS.)
- 70—For the best oil painting (original)—Cash..... 2 50
(BY A. NOBLE, ESQ., NORTH THOMPSON RIVER)
- 71—For the best display of harness and saddlery—Cash..... 5 00
(BY W. W. SHAW, ESQ., NORTH THOMPSON RIVER)
- 72—For correct and best written formal note of invitation and reply thereto—(a) accepting, (b) declining the same; also the alphabet written once in small letters and once in capital letters; also the figures written once—Cash..... 5 00
(BY E. G. PRION & CO., LIMITED, KAMLOOPS)
- 73—For the best British Columbia bred single driver on exhibition—Prize a cooking stove valued at..... 22 00
- 74—For special exhibit of dairy produce—Prize a washing machine valued at..... 6 00
(BY M. P. GORDON, ESQ., KAMLOOPS)
- 75—For best lady rider—Cash..... 5 00
(BY THE BRITISH COLUMBIA RECORD, LIMITED, THROUGH THEIR AGENT, MR. JOHN REDMAN,)
- 76—For the best collection of ores of the Kamloops Mining Division—Prize a paid-up subscription to the Mining Record for two years..... 4 00
Second prize, a paid-up subscription to the Mining Record for one year..... 2 00

(By D. C. McLAREN, Esq., Kamloops.)

- 77—For best general purpose colt,—Prize a double and stitched Rockwell Halter and Shank valued at..... 3 50
 78—For the best carriage team driven in harness—Prize a pair of blankets valued at..... 6 00
 79—For best single driver in harness—Prize a genuine whalebone plated ferril whip valued at..... 2 50

(By Messrs. Hopkins & McLean, Grocers, Kamloops.)

- 80—For the best one pound brick of dairy butter—Prize goods to the value of..... 2 50
 81—For the best packed box local grown apples—Prize goods to the value of..... 2 50
 82—For the best loaf of home-made bread, made from Ogilvie's flour—Prize one barrel of Ogilvie's Hungarian flour valued at..... 6 00

(By Messrs. Shotton & McClughan, Kamloops.)

- 83—For largest and most artistically arranged exhibit of grains and grasses on the straw—Prize a Plano sickle grinder valued at.... 7 00

(By T. W. Graham, Esq., Shuswap.)

- 84—For best sample of wheat—Cash..... 2 50
 85—For best sample of butter—Cash..... 2 50
 86—For best sample of cheese, home-cured—Cash..... 2 50
 87—For best sample of oats—Cash..... 2 50

(By Alex. McBryan, Esq., Shuswap.)

- 88—For the best and largest collection of amateur photography—Cash..... 5 00

(By W. Fortune, Esq., Tranquille.)

- 89—For the best set team harness—Cash..... 5 00

(By H. McLean, Esq., Supt. Provincial Home, Kamloops.)

- 90—For the best collection of sealed fruit (12 or more jars), cooked, sugar syrup—Prize a pair of bronze turkeys valued at..... 5 00

(By F. E. Burns, Esq., Merchant, Kamloops.)

- 91—For half-mile cowboy race—Prize a pair of cowboy boots valued at..... 6 00

(By Alex. McLean, Esq., Merchant, Kamloops.)

- 92—For exhibitor taking greatest number of first prizes in Division E—Poultry—Prize a pair of boots (lady's or gentleman's) valued at 5 00

(By W. H. Edmonds, Esq., Kamloops.)

- 93—For the best looking baby, 12 months old of under—Cash..... 5 00

(By C. Oswald Rourke, Esq., Kamloops.)

- 94—For the best pin cushion (any kind)—Prize a set of glove and handkerchief boxes valued at..... 2 00

(By Lew Blair, Esq., Merchant, Kamloops.)

- 95—For half-mile bicycle race—Prize a pair of boots valued at..... 5 00

(By The Kamloops Drug Co., Limited.)

- 96—For best collection of amateur photography—Prize an album valued at..... 5 00

(By Messrs. McArthur & Harper, Kamloops.)

- 97—For best loaf of home-made bread—Prize goods to the value of.. 2 50

- 98—For best display of home cured (smoked) hams—Prize goods to the value of..... 4 00

- 99—For best writing by girl under 10 years old—Prize goods to the value of..... 3 50

(BY JAMES MELLORS, ESQ., KAMLOOPS)

100—For the best beef animal on the grounds—Cash.....£ 5 00

101—For the best decorated and most artistically arranged exhibit (any kind) in the main building—Cash..... 5 00

(BY HIS HONOR SIR HENRI JOLY DE LOTBINIERE, LIEUTENANT GOVERNOR OF BRITISH COLUMBIA)

102—For the exhibitor contributing the largest number of exhibits towards making up the Kamloops District exhibit at the New Westminster Exhibition—Cash..... 10 00

103—For the best and most artistically decorated piece of business in Kamloops during the time of the exhibition—Cash..... 5 00

104—For the best collection of fancy work, by girl under 14 years of age—Cash..... 2 50

105—For the best written business letter (composition and writing considered), by boy or girl under 16 years of age—Cash..... 2 50

(BY JAMES VAIN, ESQ., KAMLOOPS)

106—For the best 25 pound crock of butter, made by a farmer's daughter—Prize a Daizy churn.

(BY MESSRS. W. J. ROPER AND JOHN SHIELDS, KAMLOOPS)

107—Horse jumping contest—over four flights of hurdles—open to all. Entrance free. Each competitor will be required to jump the hurdles three times to the satisfaction of the judges, and the final award will be given to the competitor making the greatest number of marks. Under the direction of the Kamloops Polo Club. First prize by W. J. Roper, Esq.—Cash..... 15 00

108—Ditto., second prize by John Shields, Esq.—Cash..... 10 00

(BY F. J. DEANE, ESQ., KAMLOOPS.)

109—For exhibitor taking greatest number of prizes in Division L—Ladies' Work—Cash..... 5 00

110—For best collection of fruit, separate exhibit, varieties correctly named—Cash..... 5 00

111—For best exhibit of sea grasses, shells and curiosities—Cash... 5 00

112—For the best milch cow on the grounds—Cash..... 5 00

(BY F. J. FULTON, ESQ., M. P. P., KAMLOOPS.)

113—For the exhibitor taking the largest number of first prizes in fruit and vegetables—Cash..... 5 00

114—For the best collection of Kamloops views, by amateurs, same to be retained for use in the Kamloops District exhibit at New Westminster—Cash..... 5 00

(BY JOHN BRATON, ESQ., KAMLOOPS.)

115—For the best piece of ladies' fancy work (worked with the Brainard & Armstrong silks)—Prize a trimmed hat, to order, value... 7 00

(BY MESSRS. MARSHALL & TODD, KAMLOOPS.)

116—For the best table centre piece—Prize a fancy vase valued at... 6 00

117—For the best pair of pillow shams—Prize a fancy vase valued at 3 50

Exhibition Committees.

RECEPTION COMMITTEE.

Messrs. W. J. Roper, J. T. Robinson, J. B. Greaves
and W. Fortune.

ENTERTAINMENT, BANQUET AND BALL COMMITTEE.

Messrs. F. J. Deane, J. T. Robinson and
P. A. Barnhart.

SPECIAL ATTRACTIONS COMMITTEE.

Messrs. J. T. Robinson, J. R. Hull, F. J. Deane, P. A.
Barnhart, J. M. Harper and James Vair.

SUBSCRIPTIONS COMMITTEE.

Messrs. J. R. Hull, W. J. Roper and J. T. Robinson.

GROUNDS COMMITTEE.

Messrs. A. Noble, J. R. Michell, A. Duck and
W. Fortune.

VEGETABLES AND FIELD PRODUCE COMMITTEE.

Messrs. W. W. Shaw and T. W. Graham.

FRUIT COMMITTEE.

Messrs. J. P. Shaw, E. Stuart Wood and P. Owens.

DAIRY PRODUCE COMMITTEE.

Mr. J. M. Harper.

FLORAL AND ARTS COMMITTEE.

Mrs. J. M. Harper and Mr. F. J. Deane.

LADIES' DEPARTMENT COMMITTEE.

Mrs. A. E. Shaw and Mr. J. Vair.

MERCHANDISE AND MINERALS COMMITTEE.

Messrs. P. A. Barnhart, James Mellors and W. U. Homfray.

reaves

TEE.

P. A.

nson.

nd

EE.

wens.

mfray.

