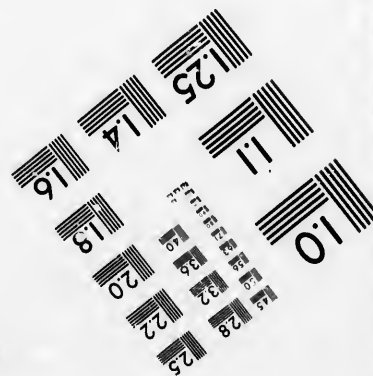
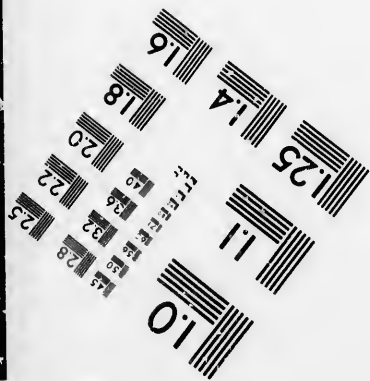
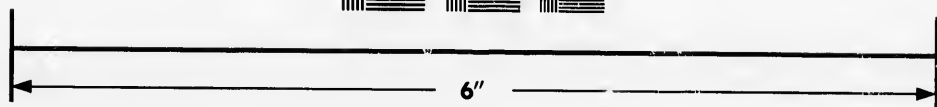
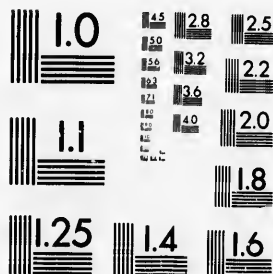


**IMAGE EVALUATION  
TEST TARGET (MT-3)**



**Photographic  
Sciences  
Corporation**

23 WEST MAIN STREET  
WEBSTER, N.Y. 14580  
(716) 872-4503

**CIHM/ICMH  
Microfiche  
Series.**

**CIHM/ICMH  
Collection de  
microfiches.**



**Canadian Institute for Historical Microreproductions / Institut canadien de microreproductions historiques**

**© 1986**

Technical and Bibliographic Notes/Notes techniques et bibliographiques

The Institute has attempted to obtain the best original copy available for filming. Features of this copy which may be bibliographically unique, which may alter any of the images in the reproduction, or which may significantly change the usual method of filming, are checked below.

L'Institut a microfilmé le meilleur exemplaire qu'il lui a été possible de se procurer. Les détails de cet exemplaire qui sont peut-être uniques du point de vue bibliographique, qui peuvent modifier une image reproduite, ou qui peuvent exiger une modification dans la méthode normale de filmage sont indiqués ci-dessous.

- Coloured covers/  
Couverture de couleur
- Covers damaged/  
Couverture endommagée
- Covers restored and/or laminated/  
Couverture restaurée et/ou pelliculée
- Cover title missing/  
Le titre de couverture manque
- Coloured maps/  
Cartes géographiques en couleur
- Coloured ink (i.e. other than blue or black)/  
Encre de couleur (i.e. autre que bleue ou noire)
- Coloured plates and/or illustrations/  
Planches et/ou illustrations en couleur
- Bound with other material/  
Relié avec d'autres documents
- Tight binding may cause shadows or distortion along interior margin/  
La reliure serrée peut causer de l'ombre ou de la distortion le long de la marge intérieure
- Blank leaves added during restoration may appear within the text. Whenever possible, these have been omitted from filming/  
Il se peut que certaines pages blanches ajoutées lors d'une restauration apparaissent dans le texte, mais, lorsque cela était possible, ces pages n'ont pas été filmées.
- Additional comments:/  
Commentaires supplémentaires:

- Coloured pages/  
Pages de couleur
- Pages damaged/  
Pages endommagées
- Pages restored and/or laminated/  
Pages restaurées et/ou pelliculées
- Pages discoloured, stained or foxed/  
Pages décolorées, tachetées ou piquées
- Pages detached/  
Pages détachées
- Showthrough/  
Transparence
- Quality of print varies/  
Qualité inégale de l'impression
- Includes supplementary material/  
Comprend du matériel supplémentaire
- Only edition available/  
Seule édition disponible
- Pages wholly or partially obscured by errata slips, tissues, etc., have been refilmed to ensure the best possible image/  
Les pages totalement ou partiellement obscurcies par un feuillet d'errata, une pelure, etc., ont été filmées à nouveau de façon à obtenir la meilleure image possible.

CREASED PAGES MAY FILM SLIGHTLY OUT OF FOCUS.

This item is filmed at the reduction ratio checked below/  
Ce document est filmé au taux de réduction indiqué ci-dessous.

10X	14X	18X	22X	26X	30X
<input type="checkbox"/>	<input type="checkbox"/>	<input type="checkbox"/>	<input checked="" type="checkbox"/>	<input type="checkbox"/>	<input type="checkbox"/>
12X	16X	20X	24X	28X	32X

The copy filmed here has been reproduced thanks to the generosity of:

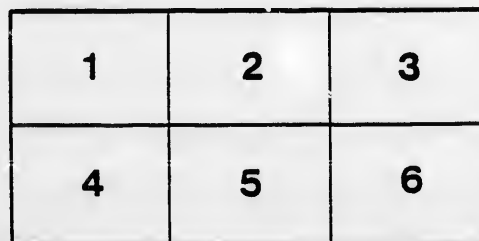
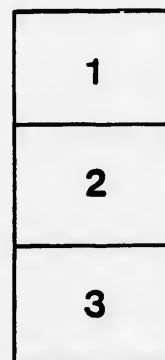
Archives of Ontario  
Toronto

The images appearing here are the best quality possible considering the condition and legibility of the original copy and in keeping with the filming contract specifications.

Original copies in printed paper covers are filmed beginning with the front cover and ending on the last page with a printed or illustrated impression, or the back cover when appropriate. All other original copies are filmed beginning on the first page with a printed or illustrated impression, and ending on the last page with a printed or illustrated impression.

The last recorded frame on each microfiche shall contain the symbol  $\rightarrow$  (meaning "CONTINUED"), or the symbol  $\nabla$  (meaning "END"), whichever applies.

Maps, plates, charts, etc., may be filmed at different reduction ratios. Those too large to be entirely included in one exposure are filmed beginning in the upper left hand corner, left to right and top to bottom, as many frames as required. The following diagrams illustrate the method:



L'exemplaire filmé fut reproduit grâce à la générosité de:

Archives of Ontario  
Toronto

Les images suivantes ont été reproduites avec le plus grand soin, compte tenu de la condition et de la netteté de l'exemplaire filmé, et en conformité avec les conditions du contrat de filmage.

Les exemplaires originaux dont la couverture en papier est imprimée sont filmés en commençant par le premier plat et en terminant soit par la dernière page qui comporte une empreinte d'impression ou d'illustration, soit par le second plat, selon le cas. Tous les autres exemplaires originaux sont filmés en commençant par la première page qui comporte une empreinte d'impression ou d'illustration et en terminant par la dernière page qui comporte une telle empreinte.

Un des symboles suivants apparaîtra sur la dernière image de chaque microfiche, selon le cas: le symbole  $\rightarrow$  signifie "A SUIVRE", le symbole  $\nabla$  signifie "FIN".

Les cartes, planches, tableaux, etc., peuvent être filmés à des taux de réduction différents. Lorsque le document est trop grand pour être reproduit en un seul cliché, il est filmé à partir de l'angle supérieur gauche, de gauche à droite, et de haut en bas, en prenant le nombre d'images nécessaire. Les diagrammes suivants illustrent la méthode.

errata  
to

pelure,  
on à



32X

VOTERS' LIST, 1881 MUNICIPALITY OF MERRICKVILLE.

PART I.—List of persons entitled to vote at both Municipal Elections and Elections to the Legislative Assembly.

Number of Poll	JUROR.	NAME.	LOT.	CONCESSION or STREET.		Post Office Address.
1		Armstrong, James.....	part of 5,	St. Lawrence,	O M F	Merrickville.
3		Atehison, Alexander ....	part of 24,	Brock,	Oc. M F	do
4	J	Abery, James .....	60, 142	<del>Drummond, &amp; Harrison O.</del>	M F	do
109		<del>Avackler, Andrew</del>	81,	Rideau,	M F	do
213	J	Avery John .....	part of Malleable	Foundry. Mill-Plot.	Oc. M F	do
288		Aitchie, Alexander .....	part of 81,	St. John,	T M F	do
11		Burehill, John .....	123 and 124,	St. Lawrence,	O M F	N'th Augusta
12		Baker, Hiram .....	90, & other premi	Lewis,	O M F	Merrickville.
14		Burehill, Abraham .....	part of 12, 14	Brock,	O M F	do
15	J	Barton, Joseph .....	part of 66 & 85,	St. Lawrence.	O M F	do
17		Bell, George .....	part of 2 & 3,	First and Second Range,	Oc. M F	do
18	J	Bell, Howard .....	part of 9,	St. Lawrence,	O M F	do
20	J	Bates, Robert .....	part of 5 & 4,	St. Lawrence,	O M F	do
21	J	Bates, Philander .....	part of 10,	Wellington,	O M F	do
22	J	Brown, Henry.....	91,	Elgin,	O M F	do
23	J	Burchill, John.....	23,	Colborne,	O M F	do
24	J	Boyd, Thomas .....	11,	First Range,	O M F	do
26		Burehill, Albert E.....	part 16, 17 & 18,	Block 41,	Oc. M F	do
27	J	Brown, Allan .....	100,	Lewis,	O M F	do
28		Brislen, John .....	11 & part of 12,	Wellington,	O M F	do
29		Brislen, Phidellas .....	11 & part of 12,	Wellington,	Oc. M F	do
30		Brislen, Edward .....	8,	Wellington,	T M F	do
31		Brown, John .....	2,	Block 50.	T M F	do
32	J	Boyd John .....	part of 8,	Broken Front B.	O M F	do
34	J	Bigford, John .....	126,	St. Lawrence,	O M F	do
35		Brennan, George .....	2,	Brock,	T M F	do
36	J	Burchill, Thomas .....	129 and 130,	Colborne,	O M F	do
37	J	Brennan, James .....	127,	Wellington,	O M F	do
38		Burges, Joseph .....	part of 1 and 2,	Block 41,	O M F	do
39	J	Buttermore, Thomas ..	109 and 121,	Lewis,	O M F	do
40	J	Buttermore, John .....	118 and 119,	St. John,	Oc. M F	do
41		Bisse'l, Orsemas .....	part o 10,	Concession B.	O M F	do
43		Boyle, William .....	15, 2.	Block, 53.	Oc. M F	do
44		Boyle, Her. y .....	140 & other premi	Colborne,	O M F	do
79	J	Balf, Patrick.....	part of 86 & 87,	St. Lawrence,	T M F	do
96		Bigham, James .....	part of 9,	Water,	T M F	do
102		Barnes, William H. W. B.	part of 6,	St. Lawrence,	Oc. M F	do
7		Crabb, James .....	part of 143,	Colborne,	T M F	do
9		Chambers, Adam .....	New Koller Mill,	Part of Mill-Plot,	T M F	do
47		Cusick, Patrick .....	part of 14,	First Range,	O M F	do
48		Cusick, William .....	part 14 & others,	First Range,	T M F	do
49		Cole, Alfred Edward .....	part of 25,	St. Lawrence,	O M F	do
50	J	Culbert, Thomas .....	part of 6,	St. Lawrence,	O M F	do
51		Crozier, Demetrius .....	80,	Lewis,	T M F	do
52	J	Carnwith, John .....	54,	Drummond,	O M F	do
54		Cranstoun, John .....	4 and 43,	Rideau,	O M F	do
55	J	Cook, Albert Isaac .....	101,	Lewis,	O M F	do
56	J	Clarkin, Bernard .....	60 and 61,	Drummond,	O M F	do
58	J	Cummings, Albert .....	part of C. & B.	Wellington,	O M F	do
59		Cummings, Elijah .....	part of C. & B.	Wellington,	T M F	do
60		Cusick, Snr., Charles.....	4,	Brock,	O M F	do
61		Cusick, Francis .....	68,	Drummond,	O M F	do
62		Church, Howard C. ....	part of 20,	St. Lawrence,	L. H. S. M F	do
63		Church, Mills K. ....	part of 7 & 8,	Concession A.	O M F	do
64		Church, John M. ....	part of 7 & 8,	Concession A.	O M F	do
65	J	Callender, Austin .....	9,	Block 46,	Oc. M F	do
258		Crossett, Andrew .....	part of Railway	Brock,	Oc. M F	do
67		Dillabough, Basil .....	20,	Brock,	T M F	do
69		Donohue, Timothy .....	10, 11 & 12,	Brock,	O M F	do
70	J	DePencier, Sidney Uriah S.	62 and 72,	St. Lawrence,	O M F	do
71	J	DePencier, Theodore John	125,	St. Lawrence,	O M F	do
72		Diver, Anthony .....	14,	Wellington,	O M F	do
73		Dixon, Francis .....	14,	Wellington,	Oc. M F	do
74		Driscoll, Michael .....	3,	Brock,	T M F	do
75		Driscoll, Richard .....	part of A.	Brock,	T M F	do
76		Doyle, James .....	52,	Drummond,	O M F	do
78		Dowdall, Patrick.....	part of 44,	St. Lawrence,	O M F	do
81	J	Boyle, Martin .....	107,	Lewis,	T M F	do
82		Drinkwater, Benjamin ...	2. Block 56,	Main,	O M F	do
85		Easman, Robert G. ....	53,	Elgin,	O M F	do
86		Easton, Roderick M. ....	Grist-Mill,	Mill-Plot,	O M F	do
87	J	Edwards, Charles .....	42,	Drummond,	T M F	do
89		Eagle, James .....	C.	Brock,	Oc. M F	do
90		Eagle, Walter .....	C.	Brock,	Oc. M F	do

92	J	Edwards, William	part of 8,	Brock,	O M F	Merrickville.
94		Edwards, Thomas	part of 67,	Drummond,	O M F	do
95		Easton, Hiram	12, 13 and 14,	Montague,	O M F	do
97		Eagley, William	33,	William,	O M F	do
98		Eagley, Robert	33,	William,	Oc. M F	do
99		Errott, Edward	Saw-Mill, plot 2,		T M F	do
100		Errott, Robert	14 and 15,	St. Patrick,	Oc. M F	do
101		Errott, Jr. Edward	14 and 15,	St. Patrick,	Oc. M F	do
103	J	Edwards, James	1,	Colborne, 13 lot. 5	O M F	do
104		Evert's Martin	part of 10,	Concession B.	T M F	do
179		Emmons Charles	9,	Block 58,	T M F	do
276		Earl, William	105,	St. Lawrence,	T M F	do
106	J	Fitzgeralds, Michael	47, part 48 & 49,	St. Lawrence,	O M F	do
107	J	Greville, Joseph	50 other premises	Ridcau,	O M F	do
111		Gleason, James	3, Block 36,	Main,	O M F	do
112		Guy, John	21,	Brock,	T M F	do
113		Gandier, Augustine	part of 27, 127	St. Lawrence,	T M F	do
114		Hanlan, Jason	pt 2, other prem	Wellington,	T M F	do
115	J	Harten, Thomas	15 and 16, 3 & 4	Block, 58.	O M F	do
116		Harrison, Robert	part of 5,	St. Lawrence,	O M F	do
117		Harrison, Howard John H.	part of 9,	Wellington,	O M F	do
119		Hall, David J.	9,	Wellington,	O M F	do
120	J	Holden, Charles A.	part of 6 and 7,	St. Lawrence,	O M F	do
122		Houston, Robert Rev.	15, Block 56,	E. C. Rectory,	T M F	do
124		Hanlan, Jason C.	part of 8 and 9	First Range,	T M F	do
212	J	Harrison, Anthony T.	pt. of Malleable	Foundry, Mill-Plot, 7	O M F	do
16	J	Hart, John	85,	Drummond,	T M F	do
283		Henderson, Frederick C.	part of 8, 11	First Range, Wellington	T M F	do
125	J	Irving, William	6 and 7,	Wellington, 13 58	T M F	do
126		Jakes, Samuel	part of 10,	Concession A.	O M F	do
127		Jaques, Henry W.	2 and 3	First and Second Range,	O M F	do
128	J	James, John	39, 37, 39	Brock,	O M F	do
130		Johnston, John	106,	St. Lawrence,	Oc. M F	do
131		Johnston, Mathew	106,	St. Lawrence,	Oc. M F	do
132		Jakes, George L.	50,	Drummond,	T M F	do
8		Kelly, John	part of 143,	Colborne,	T M F	do
133		Kerr, John	15 and 15,	Brock,	O M F	do
134	J	Kuapp, Simpson	part of 5,	St. Lawrence,	T M F	do
135		Kempffer, James M.	1, 1st & 2nd range	Main, and other premises,	T M F	do
136		Kempffer, Alexander	do. do. do.	do. do.	Oc. M F	do
137		Kempffer, Peter D.	do. do. do.	do. do.	Oc. M F	do
140		<del>Kuapp, Barbara</del>	19,	Brock,	Oc. M F	do
141	J	Keegan, John	24,	West Broadway,	F M F	do
142		Kelly, Laughern	46,	Rideau,	F M F	do
143		<del>Kelly, John C.</del>	47,	Rideau,	Oc. M F	do
144		Knapp, John	29,	West Broadway,	O M F	do
145		Kyle, Edward	26,	West Broadway,	O M F	do
146	I	Kirk, William	part of 84,	St. Lawrence,	T M F	do
147		Kyle, Patrick	46 and 65,	St. Lawrence,	O M F	do
149		Kempffer, James H.	5,	Main,	O M F	do
151	J	Kelly, Michael	8 and 9,	Wellington, B. 58	T M F	do
152		Kiltail, William H.	part of 8 and 9,	First Range,	T M F	do
153	J	Kyle, John	8 and 9, 16	Concession A. Main	T M F	do
154	J	Lang, <del>Keller Morlan K.</del>	Part of 7,	Concession A.	O M F	do
155		Long, Mathew	13,	Wellington,	O M F	do
156	J	Lang, John	part of 7,	Concession A.	O M F	do
157		Lisson, Francis D.	part of 3,	Montague, 13 loc 45	O M F	do
158		Lisson, John	52,	Ridcau,	O M F	do
161		Langford, Samuel	51,	Elgin,	O M F	do
162		Langford, Robert	51,	Elgin,	Oc. M F	do
185		Lyon, John	part of 8 and 9,	A. and B.	O M F	do
164		Magec, George B.	61 & 62 & others,	East Broadway,	O M F	do
166		Muir, Rev. John	part of 7,	Concession A.	O M F	do
197		Mahoney, John H.	part of 15 & 16,	Ellen,	O M F	do
168		Mosher, David	Part of 23,	Brock,	O M F	do
169		Montgomery, George	Part of 9,	Concession A.	O M F	do
170		Mills, John	70 and 71,	Drummond.	O M F	do
171		Mills, Thomas	Part of 6,	St. Lawrence,	T M F	do
172	J	Mills, Lincoln	29 and 28,	Brock,	O M F	do
173	J	Mills, Alexander	92 & 93,	Elgin and other premises.	O M F	do
174		Mugec, Thomas	Park Lots 8 & 9,	Block 26,	O M F	do
175		Miskelly, William	5,	St. Lawrence and others,	O M F	do
178		Meikle, John	9,	Block, 58	O M F	do
180	J	Maxwell, John	B.	Brock,	O M F	do
181		Monty, Dominick	19 & 55	Brock,	O M F	do
182	J	Merrick, <del>Nancy Stephen H.</del>	Part of	Factory Plot.	T M F	do
133		Merrick, John Augustus	10 & 11	Brock,	O M F	do
186	J	Merrick, Terrence	Part 10, 27 & 28	West Broadway, 13 45	O M F	do
196	J	Merrick, Walter	Part of 15 & 16,	William,	Oc. M F	do
219		Merrick, William R.	23,	West Broadway,	O M F	do

108  
287  
268  
270  
271  
273  
274  
275



92	J	Edwards, William	part of 8,	Brock,	O M F
94		Edwards, Thomas	part of 67,	Drummond,	O M F
95		Easton, Hiram	12, 13 and 14,	Montague,	O M F
97		Eagley, William	33,	William,	O M F
98		Eagley, Robert	33,	William,	Oc. M F
99		Eriott, Edward	Saw-Mill, plot 2,		T M F
100		Eriott, Robert	14 and 15,	St. Patrick,	Oc. M F
101		Eriott, Jr. Edward	14 and 15,	St. Patrick,	Oc. M F
103	J	Edwards, James	1,	Colborne, Block 5	O M F
104		Evert's Maria	part of 10,	Concession B.	T M F
179		Emmons Charles	10,	Block 58,	T M F
276		Earl, William	105,	St. Lawrence,	T M F
106	J	Fitzgeralds, Michael	47, part 48 & 49,	St. Lawrence,	O M F
107	J	Greville, Joseph	50 other premises	Rideau,	O M F
111		Gleason, James	3, Block 36,	Main,	O M F
112		Guy, John	21,	Brock,	T M F
113		Gandier, Augustine	part of 27, 127	St. Lawrence,	T M F
114		Hunlan, Jason	pt 2, other prem	Wellington,	T M F
115	J	Harten, Thomas	15 and 16, 3 & 4	Brock, 58,	O M F
116		Harrison, Robert	part of 5,	St. Lawrence,	O M F
117		Harrison, Howard John H.	part of 9,	Wellington,	O M F
119		Hall, David J.	9,	Wellington,	O M F
120	J	Holden, Charles A.	part of 6 and 7,	St. Lawrence,	O M F
122		Honston, Robert Rev.	15, Block 56,	E. C. Rectory,	T M F
124		Hunlan, Jason C.	part of 8 and 9	First Range,	T M F
212	J	Harrison, Anthony T.	pt. of Malleabl	Foundry, Mill-Plot, 7	O M F
16	J	Hart, John	85,	Drummond,	T M F
283		Henderson, Frederick C.	part of 8, 11	First Range, Wellington	T M F
125	J	Irving, William	6 and 7,	Wellington, B. 58	T M F
126		Jakes, Samuel	part of 10,	Concession A.	O M F
127		Jaques, Henry W.	2 and 3,	First and Second Range,	O M F
128	J	James, John	30, 31, 39	Brock,	O M F
130		Johuston, John	106,	St. Lawrence,	Oc. M F
131		Johnston, Mathew	106,	St. Lawrence,	Oc. M F
132		Jakes, George L.	50,	Drummond,	T M F
8		Kelly, John	part of 143,	Colborne,	T M F
133		Kerr, John	15 and 15,	Brock,	O M F
134	J	Knapp, Simpson	part of 5,	St. Lawrence,	T M F
135		Kempffer, James M.	1, 1st & 2nd range	Main, and other premises,	T M F
136		Kempffer, Alexander	do. do. do.	do. do.	Oc. M F
137		Kempffer, Peter D.	do. do. do.	do. do.	Oc. M F
140		Knapp, Erasmus	13,	Brock,	O M F
141	J	Keegan, John	24,	West Broadway,	F M F
142		Kelly, Laughern	46,	Rideau,	F M F
143		Kelly, John C.	46,	Rideau,	O M F
144		Knapp, John	29,	West Broadway,	O M F
145		Kyle, Edward	26,	West Broadway,	O M F
146		Kirk, William	part of 84,	St. Lawrence,	T M F
147		Kyle, Patrick	46 and 65,	St. Lawrence,	O M F
149		Kempffer, James H.	5,	Main,	O M F
151	J	Kelly, Michael	8 and 9,	Wellington, B. 58	T M F
152		Killoil, William H.	part of 8 and 9,	First Range,	T M F
153	J	Kyle, John	8 and 9, 16	Concession A. Main	T M F
154	J	Lang, Keller Morton K.	Part of 7,	Concession A.	O M F
155		Long, Mathew	13,	Wellington,	O M F
156	J	Lang, John	part of 7,	Concession A.	O M F
157		Lisson, Francis D.	part of 3,	Montague, Block 45	O M F
158		Lisson, John	52,	Rideau,	O M F
161		Langford, Samuel	51,	Elgin,	O M F
162		Langford, Robert	51,	Elgin,	Oc. M F
185		Lyon, John	part of 8 and 9,	A. and B.	J O M F
164		Magee, George B.	61 & 62 & others,	East Broadway,	O M F
166		Muir, Rev. John	part of 7,	Concession A.	O M F
167		Mahoney, John H.	part of 15 & 16,	Ellen,	O M F
168		Mosher, David	Part of 22,	Brock,	O M F
169		Montgomery, George	Part of 9,	Concession A.	O M F
170		Mills, John	70 and 71,	Drummond.	O M F
171		Mills, Thomas	Part of 6,	St. Lawrence,	T M F
172	J	Mills, Lincoln	29 and 28,	Brock,	O M F
173	J	Mills, Alexander	92 & 93,	Elgin and other premises.	O M F
174		Magee, Thomas	Park Lots 8 & 9,	Block 26,	O M F
175		Miskelly, William	5,	St. Lawrence and others,	O M F
178		Meikle, John	9,	Block, 58	O M F
180	J	Maxwell, John	B.	Brock,	O M F
181		Monty, Dominick	19 & 55	Brock,	O M F
182	J	Merrick, Harry Stephen H.	PART OF	Factory Plot.	T M F
133		Merrick, John Augustus	10 & 11	Brock,	O M F
186	J	Merrick, Terrence	Part 10, 27 & 28	West Broadway, B. 45	O M F
196	J	Merrick, Walter	Part of 15 & 16,	William,	Oc. M F
219		Merrick, William R.	23,	West Broadway,	O M F

CERTIFICATE OF JUDGE.

I. James Augustus the Junior

Judge of the County Court of the United

of the County Court of the United States Act 18...

do	27
do	108
do	297
do	268
do	270
do	271
do	273
do	274
do	275



# CERTIFICATE OF JUDGE.

I, James Reynolds the Junior, Judge of the County Court of the United Counties of Leeds and Grenville, pursuant to the ~~twelfth~~<sup>ninth</sup> Section of "THE VOTERS' LISTS ACT," 1889

do hereby certify that the annexed is a corrected copy of the List of Voters for the year 1891 received by me from the Clerk of the Municipality of the Village of Maricbath in the said United Counties, according to my revision and correction thereof pursuant to the provisions of the said Act.

Dated at the Town of Brockville, this \_\_\_\_\_ day of \_\_\_\_\_

Maricbath A.D. 1891

James Reynolds  
 JUDGE.

27		Shaver, Thomas.....	40,
108		Scott, David.....	5 & 6, 81.
267	J	Thorp, William.....	<del>107, 160,</del>
268	J	Treuham, William H. ....	25,
270		Tallman, Ferdinand A. ....	35 & 34,
271		Tallman, Ephrim.....	40,
273		Tierney, Thomas W. ....	40,
274	J	Tero, Joseph.....	107 & 108,
275		Thetford, Henry.....	105,
		Thomas Wm F.....	118

Drummond,	T	M	F
Ridenau, St John O. m?	T	M	F
St. Lawrence,	O	M	F
West Broadway,	O	M	F
William,	O	M	F
Drummond,	O	M	F
Drummond,	O	M	F
Lewis,	O	M	F
St. Lawrence,	O	M	F
Con 13	O	M	F

.....  
 .....

92 J  
 94  
 95  
 97  
 98  
 99  
 100  
 101  
 103 J  
 104  
 179  
 276  
 106 J  
 107 J  
 111  
 112  
 113  
 114  
 115 J  
 116  
 117  
 119  
 120 J  
 122  
 124  
 212 J  
 16 J  
 203 J  
 125 J  
 126 J  
 127 J  
 128 J  
 130  
 131  
 132  
 8  
 133  
 134 J  
 135  
 136  
 137  
 140  
 141 J  
 142  
 143  
 144  
 145  
 146  
 147  
 149  
 151 J  
 152  
 153 J  
 154 J  
 155  
 156 J  
 157  
 158  
 161  
 162  
 185  
 184  
 166  
 167  
 168  
 169  
 170  
 171  
 172 J  
 173 J  
 174

175  
 178  
 180 J  
 181  
 182 J  
 133  
 186 J  
 196 J  
 219

Miskelly, William ..... 5,  
 Meikle, John ..... 9,  
 Maxwell, John ..... B.  
 Monty, Donnick ..... 19 & 53  
 Merrick, ~~Henry~~ Stephen H. .... PART OF  
 Merrick, John Augustus ..... 10 & ~~11~~  
 Merrick, Terrence ..... Part 10, 27 & 28  
 Merrick, Walter ..... Part of 15 & 16,  
 Merrick, William R. .... 23,

St. Lawrence and others,  
 Block, 58  
 Brock,  
 Brock,  
 Factory Plot.  
 Brock,  
 West Broadway, 1345  
 William,  
 West Broadway,

O M F  
 O M F  
 O M F  
 O M F  
 O M F  
 O M F  
 O M F  
 O M F  
 Oc. M F  
 O M F

do  
 do  
 do  
 do  
 do  
 do  
 do  
 do  
 do  
 do

105  
 18  
 45  
 121  
 163 J  
 187 J  
 188  
 189  
 190 J  
 191 J  
 192  
 193  
 195 J  
 198  
 199 J  
 201  
 202  
 203  
 204  
 206  
 207  
 208  
 209  
 210  
 214  
 216  
 217  
 218  
 222  
 223  
 224  
 225  
 226  
 227  
 228  
 229  
 230  
 231  
 232  
 233  
 235  
 236  
 237  
 238  
 239  
 240  
 243  
 244  
 93  
 80  
 13  
 246  
 247  
 248  
 249  
 250  
 251  
 252  
 253  
 254  
 255  
 256  
 257  
 259  
 282  
 260  
 262  
 263  
 264  
 265  
 266  
 272  
 198  
 297  
 268  
 270  
 271  
 273  
 274  
 275

105	Morrison, William	Part of 10,	Concession B.	T M F	Merrickvillt.
18	Moshler, Benjamin	20,	Brock,	O M F	do
45	Mills, James	153,	St. Lawrence,	T M F	do
121	McLelland, Reuben	Part of 6 and 7,	St. Lawrence,	T M F	do
163	McDonald, Michael J.	102,	Lewis,	T M F	do
187	McCurvey, Wm. J.	Part of A,	First and Second Range,	T M F	do
188	McCurvey, William Sur.	Part of 13,	Wellington,	O M F	do
189	McCurvey, Neil	Part of 13,	Wellington,	O M F	do
190	McGill, Patrick	43, <del>44</del> 44	St. Lawrence, <del>St. Patrick</del>	O M F	do
191	McGill, Thomas	14,	St. Patrick,	T M F	do
192	McGill, John	Part of 20,	William,	T M F	do
193	McGill, James	Part of 20,	William,	T M F	do
195	McGill, Bernard	22,	William,	O M F	do
198	McDonald, Alexander	79,	St. John,	O M F	do
199	McIntyre, John	3, 4 & 5,	Brock,	O M F	do
201	McIntyre, Henry	3 & 13,	Main, Block 56	T M F	do
202	McIntyre, Henry (Wolford)	3 & 13,	Main,	O M F	do
203	McKibbon, Robert	44,	Rideau,	O M F	do
204	McKibbon, Ambross	26,	St. Lawrence, and others,	T M F	do
206	McCabe, Sr Patrick	Part of 19,	William,	O M F	do
207	McCabe, Jr. Patrick	21,	William,	O M F	do
208	McCrea, Frederick	47,	Rideau,	O M F	do
209	McCrea, Edward	48 & 49,	Rideau,	O M F	do
210	McCrea, William H.	Part of 43,	St. Lawrence,	T M F	do
211	Nicholson, William	Part of 8,	Concession B.	O M F	do
212	O'Brian, Rev. Morgau	12, 2, 3, 2	First Range, B46. O.M.F.	O M F	do
217	O'Brian, John	22,	Brock,	O M F	do
218	O'Brian, Francis	23,	West Broadway,	T M F	do
223	O'Donnell, Hugh	73, 74 and 75,	St Patrick & other premises	O M F	do
223	O'Brian Timothy	73, 74 and 75,	Brock,	O M F	do
224	<del>Wheat, James</del>	<del>78,</del>	<del>Lewis,</del>	<del>T M F</del>	Smith's Pat
225	Postlethwaite, Josiah C.	Part of 6,	St. Lawrence,	T M F	Merrickvillt.
226	Postlethwaite, William	Part of 127,	St. Lawrence,	O M F	do
227	Putnam, Charles W.	Part of 26,	St. Lawrence,	O M F	do
228	Payne, Josiah	13, 14 and 15,	Main,	O M F	do
229	Payne, William	Part of 13, 14,	First and Second Range,	T M F	do
230	Percival, Roger C.	Part of Mill Plat	Foundry,	O M F	do
231	Percival, Harvey	Part 23, 24 & 28	Brock,	O M F	do
232	Postlethwaite, Charles W.	111,	Lewis,	O M F	do
233	Postlethwaite, Joseph	38,	St. John,	O M F	do
235	Putnam, Gordon	14,	Brock,	O M F	do
236	Pearson, William	Part of 8,	Concession B.	O M F	do
237	Phillips, Richard	12,	Main,	O M F	do
238	Phillips, Charles W.	152,	St. Lawrence,	O M F	do
239	Potter, Rev. George	85,	St. Lawrence,	T M F	do
240	Peoples, Robert	31,	Brock,	O M F	do
243	Paye, Joseph	17,	William,	O M F	do
244	Paye, Edward	17,	William,	O M F	do
93	Perrin, William H.	Part of 8,	Brock,	T M F	do
80	Paye, William	Part of 86 & 87,	St. Lawrence,	T M F	do
13	Pelton, William J.	133,	Elgin,	T M F	do
246	Quinn, Joseph	Part of 8 & 9,	Concession Block 36 of 04	T M F	do
247	Quackinbush, John	Part of 58,	East Broadway,	O M F	do
248	Rose, Charles	99,	Lewis,	O M F	do
249	Rose, Henry	98,	Lewis,	O M F	do
250	Read, Robert	28,	Brock,	O M F	do
251	Radwell, James	1 & 2, Block 46,	Montague,	O M F	do
252	Read, William C.	E,	Broken Front,	O M F	do
253	Read, Edward A.	E.	Broken Front,	O M F	do
254	Read, Alfred	Part of 8 and 9,	Main,	T M F	do
255	Real, Daniel	Part of 6,	St. Lawrence,	T M F	do
256	Riddell, Harry	Part of 6,	St. Lawrence,	O M F	do
257	Rogers, Rev. George	6 & 7, 7 & 8	St. Lawrence, Drummond	O M F	do
259	Ryan, James	Part of 4 & 0	St. Lawrence, Drummond	T M F	do
262	Rose, Ashman	Part of 9,	St. John,	T M F	do
260	Smith, Richrd	32,	Brock,	T M F	do
262	Scott, William	Part of 9,	Water,	O M F	do
263	Silver, Nahim	Part of 6,	St. Lawrence,	T M F	do
264	Sheets, Oscar	Part of 20,	William,	T M F	do
265	Smith, Square	33,	Brock, & St. Patrick,	O M F	do
266	Stevart, James	54,	East Broadway,	T M F	do
272	Shailer, Thomas	40,	Drummond,	T M F	do
109	Scott, David	5 & 6, 81.	Rideau, St. John O.M.F.	T M F	do
267	Thorp, William	167.	St. Lawrence,	O M F	do
268	Trenham, William H.	25,	West Broadway,	O M F	do
270	Tallman, Ferdinand A.	35 & 34,	William,	O M F	do
271	Tallman, Ephriam	40,	Drummond,	O M F	do
273	Tierney, Thomas W.	40,	Drummond,	O M F	do
274	Tero, Joseph	107 & 108,	Lewis,	O M F	do
275	Thatford, Henry	105,	St. Lawrence,	O M F	do
	Thomas Wm R	118	Con B	O M F	do

177	Tuck, William	Part of 9,	Concession A.	T	M	F	Merrickville.
10	Towle, Joseph		Part of Mill Plot,	T	M	F	do
184	Thompson, Robert	Part of 8 and 9,	A. & B.	Oe.	M	F	do
277	Vancamp, Sterling	J Part of 6 & 7,	Wellington,	O	M	F	do
279	Vance, William	17, & Part of 16,	Block 41,	T	M	F	do
280	Vedder, Jerome	Part of 29,	Brook,	T	M	F	do
281	Whitmarsh Eliezer H.	8 & 10,	First Range,	O	M	F	do
284	Wilson, Robert	J 138, ... D.	Colbourne,	O	M	F	do
285	Walker, John	Part of 8 & 9,	First Range,	T	M	F	do
286	Wilson, John	J <del>132</del> , 132	Elgin,	O	M	F	do
289	White, William	13,	Block, 59	O	M	F	do
290	Wakley, Edwin	J Part of 1, & 2, 3,	Block, 27	O	M	F	do
291	Walker, Robert	J 9,	Brook,	T	M	F	do
292	Williams, Edward	J 60.	East Broadway, 1346.	O	M	F	do
294	Watchorn, Robert W.	J Part of 23, & 49,	Brook,	O	M	F	do
296	Watchorn, George	J Part of 29, 41,	Brook,	Oe.	M	F	do
297	Wilson, Samuel	173.	St. Lawrence,	O	M	F	do
298	White, James	J Part of 25,	St. Lawrence,	T	M	F	do
84	Whitney, George	Part of 6,	St. Lawrence,	O	M	F	do
6	Watchorn, Thomas	J Part of 112, Worren Holey	St. Lawrence,	O	M	F	do

PART II.—List of persons entitled to vote at MUNICIPAL Elections ONLY.

2	Aitchison, Catherine	Part of 24,....	Brook,	Owner	do
26	Burchill, Ellen	Part 16, 17 & 18,	Block 41,	Owner	do
33	Burchill, Elizabeth	<del>Part 11</del> Part 11 1/2	Brook,	Owner	do
42	Boyle, Abigail	2 <del>18</del> Block 53,...	Brook,	Owner	do
53	Crozier, Susanna	45,.....	St. Lawrence,	Owner	do
77	Duke, Caroline E.	Part 2 & 3,....	Wellington,	Owner	do
83	Earl, Catherine	Part of 6,.....	St. Lawrence,	Tenant	do
88	Eagley, Eliza	C,.....	Brook,	Owner	do
101	Gleason, Margaret	3, Block 36, ..	Main,	Tenant	do
118	Hamilton, Rosanna	4,.....	Brook,	Owner	do
123	Hanlan, Rebecca	82,.....	Lewis,	Owner	do
129	Johnston, Caroline	106,.....	St. Lawrence,	Owner	do
149	Kelly, Ann	12,.....	Wellington,	Tenant	do
159	Kuapp, Geno	13,.....	Brook,	Owner	do
160	Lennard, Charlotte	Foundry Plot,...	Elgin,	Tenant	do
166	Lake, Rebecca	Part of 39, & 37,	St. John,	Owner	do
165	Magee, Eelen	1, 2 & 3,.....	Montague,	Owner	do
176	Merrick, Mary P.	Part of 9,.....	Concession A.	Owner	do
197	Merrick, Caroline	Part of 15 & 16,	William,	Owner	do
194	McGill, Margaret	Part of 20,.....	William,	Owner	do
209	McIntyre, Susan	6, 7, & 8,.....	Block 60	Owner	do
215	Nicholson, Elizabeth	Part of 59,....	East Broadway,	Tenant,	do
234	Putnam, Letetia	14,.....	Brook,	Owner	do
133	Real, Mary Ann	1,.....	Main,	Tenant,	do
261	Scanlan, Susan	131,.....	Elgin,	Owner	do
269	Tackeberry, Maria	53,.....	Rideau,	Owner,	do
278	Vanixon, Mary	14,.....	First Range,	Owner,	do
287	Wickwire, Jane	81,.....	St. John,	Tenant,	do
293	Ward, Mary	Part of 9,.....	Concession A.	Owner,	Smith's Falls.
295	Watchorn, Matilda	Part of 29 & 41,	Brook,	Owner,	Merrickville.
	Wood Jane Ann	141	Brook,	Owner,	do

PART III.—Persons entitled to Vote at Elections to the Legislative Assembly only.

19	Bell, William	Part of 2 & 3, ..	First Range,	M. F.	do
56	Cook, William H.			M. F.	do
57	Clarkin, John	58 & 59,.....	Drummond,	Oe. M. F.	do
91	Eagley, John H.		Brook,	M. F.	do
150	Kelly, Michael	46,.....	Rideau,	M. F.	do
211	Montgomery, Robert H.	13,.....	Brook,	M. F.	do
205	McCabe, John	Part of 44,....	St. Lawrence,	M. F.	do
220	Oliver, Frank	13,.....	Brook,	M. F.	do
221	Olinstead Howard	13,.....	Brook,	M. F.	do
241	Payen, Francis	17,.....	William,	M. F.	do
242	Pucea, John	17,.....	William,	M. F.	do

Church Howard  
Council Francis  
Clerk of the Municipality of the village of Merrickville, in the County of Grenville,  
do hereby certify that parts one and three of the within List constitute a correct list for the year 1891, of  
all persons appearing by the last revised Assessment Roll of the said Municipality to be entitled to vote at  
Elections for Members of the Legislative Assembly; and that parts one and two constitute a correct list for  
said year of all persons appearing by the said roll to be entitled to vote at Municipal Elections in said Muni-  
cipality; and I hereby call upon all Electors to examine the said List, and if any omissions or other errors  
are perceived therein, to take immediate proceedings to have the said errors corrected according to law.

Dated this First day of August, 1891.

JOHN KERR, Clerk of said Municipality.

