

CANADIAN Contract Record

*A Weekly Journal of Public Works, Tenders,
Advance Information and Municipal Progress*

This Paper Reaches Every Week the Town and City Clerks, Town and City Engineers, County
Clerks and County Engineers, Purchasers of Municipal Debentures and Leading
Contractors in All Lines Throughout Canada

VOL. 16.

TORONTO, MONTREAL, WINNIPEG, MARCH 29, 1905

No. 711

THE CANADIAN CONTRACT RECORD

PUBLISHED EVERY WEDNESDAY

As an Intermediate Edition of the Canadian
Architect and Builder.

THE G. H. MORTIMER PUBLISHING COMPANY

of Toronto, Limited,

Subscription Price, \$6 per annum, payable
in advance.

CONFEDERATION LIFE BUILDING, TORONTO.
Telephone Main 2362.

Branch Offices:

38 Alliance Building, Montreal,
Telephone Main 2399.

750-751 Union Bank Building, Winnipeg.
22 Great St. Helen's, London, England.

Subscribers who may change their address
should give prompt notice of same. In doing so
give both old and new address. Notify the publishers
of any irregularity in delivery of papers.

THE BITULITHIC PAVEMENT

We are prepared to furnish Municipal Corporations and Responsible Contractors with the necessary plant, bitumen for the three courses, expert advice and laboratory testing on a royalty basis under our patent for laying the Bitulithic Pavement. We are also prepared to install Municipal Paving Plants.

WARREN BROTHERS COMPANY,
93 Federal St., Boston.

Cement

Sidewalks

Sealed tenders, addressed to the undersigned, will be received up to 6 p.m. of MONDAY, 3RD APRIL, 1905, for the construction of Cement Walks in the Town of Waterloo during the season of 1905.

Specifications can be seen and form of tender obtained at the office of the undersigned. No tender necessarily accepted.

A. B. McBRIDE, Town Clerk,
Waterloo, Ont.

System of Sewers REGINA, N. W. T.

Sealed tenders will be received by the Corporation of the City of Regina, N. W. T., up to 4 o'clock p.m. Monday, April 10th, 1905, for constructing a system of sewers. Plans and specifications may be seen and blank tender forms obtained at the Secretary-Treasurer's office, Regina, and at the office of the Chief Engineer, JOHN GALT, C.E., Toronto.

Each tender must contain the full name of party or parties bidding and must be accompanied by a certified bank cheque for Two Thousand Dollars (\$2,000) payable to the Treasurer of the Corporation of Regina. The City reserves the right to reject any or all tenders.

J. KELSO HUNTER,
Secretary-Treasurer.

OLD DOORS WANTED

I am open to buy a few walnut doors from old buildings being torn down. Please state sizes, prices, or telephone M. 2701. JAS. ROBERTSON, 10 Front St. E., Toronto.

TENDERS WANTED

Immediately for moving a Frame Dwelling from Fort Rouge to corner Hillee and Burnell Streets. Apply to CANADIAN WEST LAND CO., 341 Main St., Winnipeg.

TENDERS WANTED

Sealed tenders will be received by the undersigned up to FRIDAY, MARCH 31ST, 1905, for the erection of a four-room school at the Village of Bolton. Tenders received for the whole or part. Plans and specifications may be seen at the Clerk's office, Bolton, or at the office of the architect, Jas. A. Ellis, 200 Manning Chambers, Toronto, on and after March 20th, 1905. The lowest or any tender not necessarily accepted.

JNO. MACDONALD, Clerk,
Bolton, Ont.

Tenders For Sewer Tile

Sealed tenders will be received by the undersigned up till the 10TH OF APRIL, for the following sewer tile, as per specifications on file in this office:

4,500 feet 6 inch tile.
3,000 " 8 " tile.
120 Single Junctions 6 inch.
100 " 8 inch.

J. K. ROCHESTER, Town Clerk,
Renfrew, Ont.

WATER WORKS

IMPROVEMENT

Saint John, New Brunswick

Sealed bids or proposals will be received at the office of the Common Clerk until 3 p.m. of WEDNESDAY, APRIL, 12TH, 1905, for the construction of proposed Water Works Extension, which will be let in four contracts as follows:

Section 1—10,300 feet 33" woodstave pipe line and accessory structures.

Section 2—7,400 feet 39" reinforced concrete aqueduct.

Section 3—7,500 feet 48" reinforced concrete aqueduct (part in tunnel.)

Section 4—Concrete Masonry Dam on Misspec River (with headworks and gate-house.)

All bids must be made on the blank form of proposal, which with contract and specification will be furnished intending bidders.

Each proposal on each section must be accompanied by a certified cheque for \$2,000, payable to the City of Saint John. A bond of \$15,000 on each of Sections 1, 2 and 3, and a bond of \$10,000 on Section 4, will be required for the faithful performance of the contract.

Intending bidders can obtain copies of specifications, and plans may be seen either at the office of the Common Clerk, Saint John, or at the office of the Consulting Engineer, Snow & Barbour, Boston.

The Board reserves the right to reject any or all bids or to accept any bid should the Board deem it for the interest of the City so to do.

WALTER W. WHITE, Mayor,
Chairman Water and Sewerage Board.

WANTED

Competent Draughtsman; state salary wanted and give previous experience. MOORE & HENRY, Albion Block, London, Ont.

TENDERS

will be received by the undersigned up till noon, APRIL 8TH, for all the various trades required in the erection of a building for the Canadian Bank of Commerce, Queen Street, Parkdale. Plans and specifications may be seen and all other information obtained at the office of DARLING & PEARSON, Architects, 2 Leader Lane, Toronto. The lowest or any tender not necessarily accepted.

TENDERS FOR SEWER PIPE

Sealed tenders, addressed to Richard Mitchell, City Clerk, will be received up till 4 o'clock p.m. on MONDAY, APRIL 10TH, 1905, for the supply of Sewer Pipe required by the City of Guelph for this year.

Specifications and form of tender may be obtained at the City Engineer's Office.

J. HUTCHESON, City Engineer,
Guelph, March 27th, 1905.

THE TORONTO AND HAMILTON RAILWAY COMPANY

NOTICE TO CONTRACTORS

Tenders will be received by the undersigned up to the FIRST OF MAY NEXT, at noon, for the grading, culverts, masonry, bridges and other works required between Toronto and Niagara Falls, Ontario. On and after the 27th of this month, plans and profiles may be seen, and specifications obtained, at the company's engineering department, Pacific building, Scott and Front streets, Toronto. The lowest or any tender will not necessarily be accepted.

FREDERIC NICHOLLS,
President.

Toronto, 16th March, 1905.

GOVERNMENT POSTAL PNEUMATIC SERVICE.

We understand that work is now well under way and contracts already placed for this service in Toronto and Montreal, so that installation will begin the coming season. It is expected that the system in Montreal will be constructed and in operation first, although the construction of street work will go on simultaneously in both cities. There is still annoying delay occasioned in Toronto, due to the impossibility of locating the Central station building in Front street until the railway expropriation of the burnt district has been settled.

Mr. Jehn Galt, the chief engineer for the Government, informs us that the contract for the pneumatic mains was awarded to Robt. McLaren & Company, of Glasgow, Scotland, and that delivery will begin during May.

CONTRACTS OPEN.

MAPLE LEAF, ONT.—A. Glasgow purposes building a residence.

SALISBURY, N.B. — Plans have been prepared for new school building.

ALAMEDA, N.W.T. — The Council have decided to purchase road machinery.

ST. JOHN, N.B. — The Christie Woodworking Co. intend increasing their factory.

NORTH BAY, ONT. — J. Blanchet intends erecting a three-storey building on Main street.

PORTAGE LA PRAIRIE, MAN. — B. A. St. John intends building a brick block.

MEOTA, N.W.T. — Peter Robinson is this week taking tenders for the building of a school.

KAMLOOPS, D.C. — Plans are to be prepared at once for a new fire hall to be built on First ave.

DURHAM, ONT. — The town will assist the Durham Furniture Co. in rebuilding their factory.

TILBURY, ONT. — It is reported that the Michigan Central Railway intends building a new depot.

WOLSELEY, N.W.T. — The town is offering a bonus of \$3,000 for the erection of a 75-barrel flour mill.

GOLDENBURG, ONT. — Richard Ralph is in the market for second-hand engine and boiler, 25 h.p.

SHOAL LAKE, MAN. — Plans for a new school building have been prepared by a Winnipeg architect.

MOOSOMIN, N.W.T. — R. B. Clarke is asking for tenders up to April 1st for erection of a brick hotel.

ARCOLA, N.W.T. — Peter McLellan is asking for tenders up to April 3rd for erection of school building.

ACTON, ONT. — It is expected that the new Grand Trunk station will be commenced early in April.

AMHERST, N.S. — The ratepayers of the United Sections have voted \$4,000 to build a new school house.

NEW GLASGOW, N.S. — The ratepayers have voted in favor of raising \$40,000 for a water works system.

GANANOQUE, ONT. — A by-law to grant a loan of \$15,000 to the Sampson Bolt Co. was carried last week.

FORT FRANCES, ONT. — Architects have been invited to submit plans for proposed town and fire hall.

LITTLE CURRENT, ONT. — The question of providing a better system of fire protection is under consideration.

REGINA, N.W.T. — Tenders are invited by the City Clerk up to May 1st for the purchase of \$60,000 of debentures.

NIAGARA FALLS SOUTH, ONT. — It is reported that F. E. Dalton purposes building a business block on Ferry street.

SIX MILE BROOK, N.S. — Tenders for erection of a new school here will be received by A. R. Innis up to April 15th.

SHOULDICE, ONT. — Joseph Allan has just taken tenders on erection of a brick school house in S. S. No. 8, Kappel.

BUCKINGHAM, QUE. — The Electric Reduction Co., this place, are in the market for second-hand motors and generators.

LONDON, ONT. — W. G. Murray, architect, is preparing plans for a \$15,000 Sunday School building for St. Andrew's Church.

DARRELL, ONT. — J. Kennedy, Secretary School Board, will receive tenders up to April 12th for remodelling school house.

MINNEDOSA, MAN. — The School Board have decided to submit a by-law to borrow \$6,000 for increased school accommodation.

GAINSBORO, N.W.T. — H. D. Cameron and James Mawdsley will erect a flour mill here; contract for milling machinery not let.

VICTORIA, B.C. — The British-American Paint Co. have made application to the city for a site on which to establish a factory.

GALT, ONT. — The Board of Water Commissioners will ask the City Council for \$6,000 for extension of the water-works system.

NEWCASTLE, N.B. — It is the intention of the Intercolonial Railway management to erect a round-house here costing \$25,000.

NORTH TORONTO, ONT. — Dr. Bond has commenced the excavation for a residence at corner of Yonge street and Roehampton ave.

TORONTO JUNCTION, ONT. — Richard Davis has purchased property on Keele street on which he will likely build an office.

MAPLE CREEK, N.W.T. — The by-law to raise \$5,000 for a system of water-works will be submitted to a vote of the ratepayers April 1st.

ALVINSTON, ONT. — A. S. Code, C.E., has just taken tenders for the construction of three highway bridges in the Township of Brooke.

MOUNT TREMBLANT, QUE. — The Galt Petroleum & Chemical Co. announce that they will erect here a \$100,000 wood alcohol plant.

PORT ARTHUR, ONT. — A by-law to assist the Atikokan Iron Co. to establish a blast furnace here was carried by the ratepayers on the 22nd inst.

COLLINGWOOD, ONT. — P. C. Palin, architect, is this week taking tenders for erection of a residence for the manager of the Bank of Montreal.

STEWARTVILLE, ONT. — Tenders requested by D. Young up to Monday, May 1st, for erection of brick veneer school house in S. S. No. 13, McNab.

BOWESVILLE, ONT. — Tenders are being taken this week by E. A. Howes for erection of new school building. Plans by George E. Wilson, architect, Ottawa.

GRANDVIEW, MAN. — The ratepayers will vote on a by-law to grant a bonus of \$3,000 to the Grandview Milling Co., who purpose building a grist mill and elevator.

RENFREW, ONT. — Roland Czrzier is asking for tenders by April 3rd for erection of brick store, corner of Patrick and Raglan streets. Plans by J. D. McNicol, architect.

KINGSTON, ONT. — G.T.R. surveyors have examined the grade between this city and Kingston Mills with a view to having it reduced, although the work would be expensive.

RICHMOND HILL, ONT. — The ratepayers have agreed to provide a site for a new station to be built by the James Bay Railway Co. Work will be commenced at once.

OCHRE RIVER, MAN. — Thomas S. Curtis, Village Clerk, invites tenders up to April 1st for building two pile bridges over the Ochre river, both 50 ft. span and 16 ft. roadway.

ST. ANDREWS, N.B. — Bills now before Parliament authorize the town to issue debentures for \$10,000 for electric lighting plant and \$5,000 as a bonus to the St. George Granite Co.

HARROW, ONT. — John Readman purposes building a two-story residence

on Munger ave.—F. Pastorius intends building a residence. Thomas Wride will also build a residence.

QUEBEC, QUE. — J. Gallagher, waterworks engineer, will receive tenders up to Thursday, April 13th, for supply of cement, brick, drain pipes, lead pipe, pig-lead and iron and brass castings.

FREEMPORT, N.S. — The Department of Public Works, Ottawa, request tenders by April 14th for construction of a breakwater here. Cheque for \$1,800 to accompany each tender.

SANDWICH, ONT. — The Bell Telephone Co. purpose spending \$10,000 on telephone system here.—It is expected that the new post-office to be built here will be commenced about May 1st; estimated cost, \$15,000.

CHARLOTTETOWN, P.E.I. — The City Council have appointed a committee to prepare a bill asking the Provincial Legislature for power to issue \$75,000 of debentures for the installation of an electric light plant.

ORILLIA, ONT. — Croker & Hoy, architects, have prepared plans for remodelling the residence of Dr. W. C. Gilchrist on Peter street. They are also preparing plans for a brick residence for J. W. Garratt, of Coldwater.

COBDEN, ONT. — Tenders for erection of church, from plans by M. C. Edey, architect, Ottawa, will be received by Rev. F. G. Robinson up to 31st inst.—Robert Burton will erect a store building, with plate glass front.

BRANTFORD, ONT. — The County Council are considering the erection of a hospital for consumptives.—It is understood that the Bell Telephone Co. are looking for a suitable site on which to erect a new Central office.

NEWMARKET, ONT. — A new residence will be built by J. A. Collins.—M. Kennedy has purchased two lots on Gorham street on which he will likely build this summer.—A. Finlay is preparing to build two residences.

WIARTON, ONT. — A deputation from this vicinity interviewed the Dominion Government last week in reference to harbor improvements at Wiarton and Lion's Head and the locating of a fish hatchery at the former place.

LISTOWELL, ONT. — D. Hibner, of Berlin, has made a proposition to acquire the property of the Canadian Bent Chair Company here. He agrees to erect an additional building, 44 by 100 feet, 4 stories, at a cost, including plant, of \$10,000.

MILTON, ONT. — The Town Council have retained K. L. Aitken, of Toronto, as consulting engineer in connection with the rebuilding of their electric light plant. A new power house will be built and new boilers, engine and generator installed.

ALEXANDRIA, ONT. — A. G. F. Macdonald, Secretary Separate School Board, will receive tenders up to April 1st for erection of a four-room school building in this town. Plans by the Architectural & Engineering Co. of Canada, Sparks street, Ottawa.

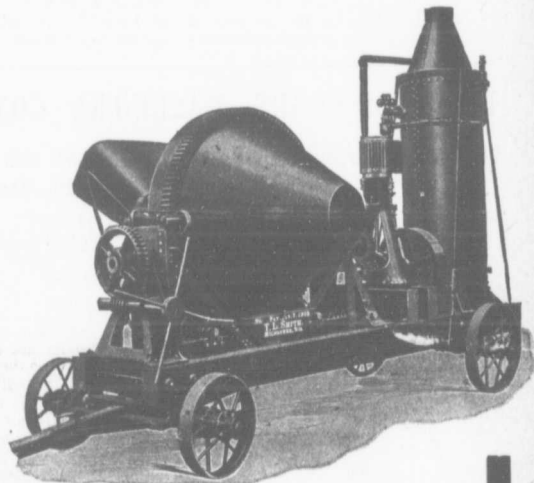
SARNIA, ONT. — New tenders invited by the City Clerk for construction of granolithic sidewalks.—R. W. Fawcett, architect, desires tenders by noon of April 1st for erection of a residence on Cromwell street for Robert McMan.

BRAMPTON, ONT. — The Merchants Bank have purchased the property on south-west corner of Queen and Main streets and intend erecting thereon a bank building.—James Goulding is about to erect a costly residence opposite the court house.

BRANDON, MAN. — The Western Electric Light & Power Co propose to

A FEW FACTS ABOUT THE
"SMITH"
CONCRETE MIXER

1. It has no peer for fast and thorough mixing.
2. It is unrivalled for simplicity and ease of operation.
3. It is the Mixer of "minimum repairs."
4. It is the Mixer with the longest life.



Smith Mixer on Truck with Engine and Boiler.

5. By its good features it has won the name "A Perfect Mixer."

~~~~~  
Supplied in many Sizes and Styles to Suit all Requirements.

**W. H. C. Mussen & Co.**

Railway, Mining and Contractors' Supplies

**MONTREAL**

undertake an extensive water power development on the Assiniboine river, five miles east of Brandon. — Tenders will shortly be invited for a new armory here. The plans are in the hands of W. N. Lailey, architect; brick and stone, cost \$20,000.

**BROCKVILLE, ONT.** — The ratepayers carried two by-laws last week, one to loan \$30,000 to the Canada Carriage Co. to assist them in rebuilding their works, the other to provide a site for a factory to be built by the D. H. Burrell Co., of Lytle Falls, N.Y., manufacturers of dairy supplies.

**MOOSOMIN, N.W.T.** — J. B. Stauffer has been instructed to proceed with the erection of a hotel, to be brick or cement blocks. — F. R. Evans, architect, Winnipeg, has prepared plans for new town hall to be built here, but the contract will not likely be let until next month.

**GLACE BAY, N.S.** — The ratepayers have appointed a committee to interview the Dominion Government and the Dominion Coal Co. for the purpose of soliciting assistance towards the con-

struction of a waterworks system, estimated to cost \$150,000.

**WINDSOR, ONT.** — The Board of Trade have taken up the subject of establishing a public bath house and have secured rough plans from an architect for a building to cost between \$8,000 and \$10,000. — The Peninsular Tool & Specialty Co. will erect a factory on Caron avenue.

**DEVIL ISLAND, N.S.** — The Department of Public Works, Ottawa, are asking for tenders up to Saturday, 15th inst., for construction of a breakwater here. Plans at office of C. E. W. Dodwell, Halifax, N.S.; E. G. Milledge, Antigonish, N.S., and on application to the Postmaster.

**WATERLOO, ONT.** — A. Weidenhammer, Chairman Light Committee, is asking for tenders by Monday, April 3rd, for supply of a quantity of gas pipe and fittings, also for excavation required for laying the pipes. — The plans for the proposed Evangelical church have been received from H. C. McBride, architect, of London. It will be of red brick, seating capacity 600.

**WALKERVILLE, ONT.** — F. H. Cooper, Secretary School Board, is asking for tenders up to Wednesday, April 5th, for erection of a fifteen room school. Plans on application to the secretary and at office of Albert Kahn, architect, 1117 Union Trust Building, Detroit. — The Globe Furniture Co. have decided to build a new factory, to cost \$40,000, for which plans have been prepared.

**PETERBORO, ONT.** — The Peterboro Shovel & Tool Co. are having plans prepared for a handle factory and store house. — The Peterboro Lock Manufacturing Co. are about to invite tenders for erection of their new building. — The Fire, Water & Light Committee have recommended the submission of a by-law to the ratepayers to provide \$25,000 for erection of a fire hall and purchase of a new steam engine and chemical engine.

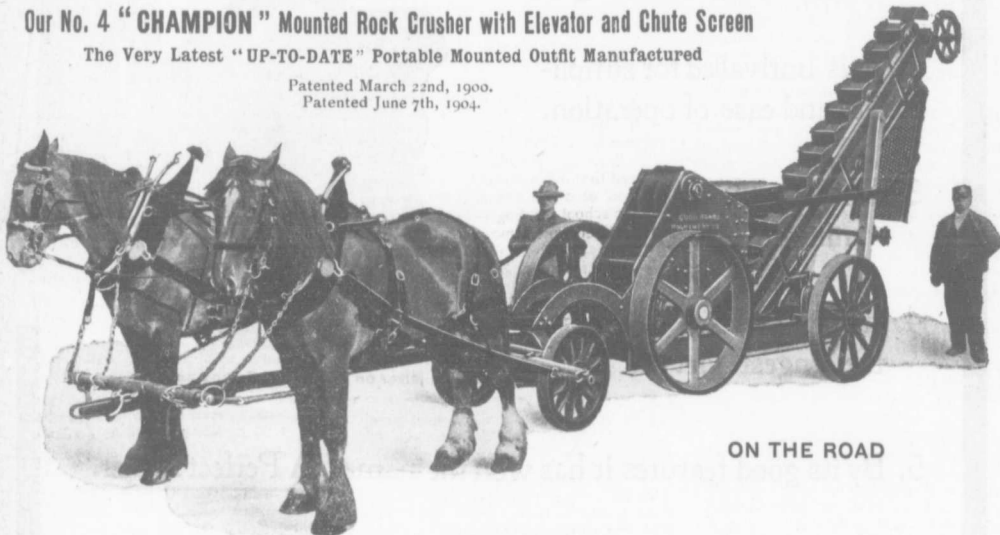
**CHATHAM, ONT.** — A. M. Piper, architect, wants tenders by Friday, 31st inst., for erection of a residence in Dover, about thirteen miles from Chatham. — John Kennedy, this city, will receive tenders up to April 10th for alterations to school house in Section No. 13, Chatham

## THE GOOD ROADS MACHINERY COMPANY, LIMITED, Hamilton, Canada

Our No. 4 "CHAMPION" Mounted Rock Crusher with Elevator and Chute Screen

The Very Latest "UP-TO-DATE" Portable Mounted Outfit Manufactured

Patented March 22nd, 1900.  
Patented June 7th, 1904.



ON THE ROAD

The Steel "CHAMPION" Rock Crusher is the result of years of practical experience in crushing Rock from the limestone Ridges to the very hardest Syenite Rock. For crushing hard Boulders they have been proved to be superior to all competitors.

All mechanics agree that the simpler the machine the more valuable it is. In complicated machines look out for trouble and expense.

Send for latest printed matter and our 1905 Calendar to

**Good Roads Machinery Company, Limited,** JOHN CHALLEN,  
President and General Manager.

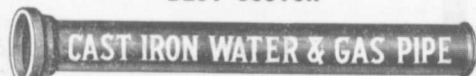
Address—Late Kiley Beckett Works, 144 York Street, HAMILTON, ONT.

## — L. H. GAUDRY & CO. —

DIRECT IMPORTERS AND AGENTS



SALT GLAZED VITRIFIED  
**SEWER PIPE**  
BEST SCOTCH MAKES



**BEST SCOTCH**  
**CAST IRON WATER & GAS PIPE**

ALL WEIGHTS AND TESTS TO SUIT REQUIREMENTS.

**Superior Quality**

**Large Stock**

**Prompt Shipments**

OFFICES: HOCHELAGA BANK BUILDINGS

**QUEBEC, CANADA**

# DERRICKS

We manufacture every class of Hoisting Derricks both for Hand or Power. Write for our price list of Standard Builders' and Contractors' Derricks, 1500 pounds to 7 tons capacity.

## MILLER BROS. & TOMS MONTREAL

Township.—The Wallaceburg & Lake Erie Railway Co. expect to commence the work of building an electric railway between Chatham and Wallaceburg within two months. The power house will probably be located here.

RAINY RIVER, ONT.—The new public school building will be commenced early next month and will be brick, cost \$25,000.—A new Roman Catholic church will be built on corner of Broadway and Fourth streets.—W. O. Chapman is arranging for the erection of a new jewelry store.—It is the intention of the Rainy River Curling & Skating Co. to erect a modern rink, to cost between \$3,000 and \$4,000.—Gordon, Ironside & Fares will erect a new office building.

OWEN SOUND, ONT.—Tenders are invited up to April 20th for purchase of \$2,000 debentures of school section No. 16, Township of Sydenham. W. H. Kemp, William White, W. J. Boyd, John Durie, trustees.—The Carney Lumber Co. are making preparations to commence the building of their saw mill here.—The Georgian Bay Power Co., of Toronto, have submitted a proposition to deliver electric energy in Owen Sound and ask for the privilege of using the streets. The power is to be generated at Eugenia Falls.

CALGARY, N.W.T.—The R. C. Mission have approved of the plans prepared by Lawson & O'Gara, architects, for a church to be erected in the new German settlement at Spring Lake, Alberta.—Lawson & O'Gara, architects, have taken tenders on additions and alterations to

### JOHN GALT, C.E. & M.E.

MEM. CAN. SOC. C.E. AND C.E.A., ETC.

#### CONSULTING ENGINEER AND EXPERT

National Trust Building Toronto  
20 King Street East  
Specialties—Water Supply and Sewerage.

### JOHN S. FIELDING

Mem. Soc. C. E. West Penn. '87.

#### CONSULTING ENGINEER

Water Powers Dams, Bridges  
Room 2, 15 Toronto Street, TORONTO, ONT

J. A. I. WADDELL, Mem. Can. Soc. C. E.  
Mem. Inst. C. E.  
Mem. Am. Soc. C. E.

IRA G. HEDRICK, Mem. Can. Soc. C. E.  
Mem. Inst. C. E.  
Mem. Am. Soc. C. E.

### Waddell & Hedrick Consulting Bridge Engineers

KANSAS CITY, MO.

Canadian Head Office:  
Manning Chambers, TORONTO, ONT.  
Montreal Office: 185 St. James Street.

stone and brick store building on Eighth ave. for S. Laurendeau, also for a three-story stone and brick convent building to be erected at McLeod.—Wilson & Hodgson, architects, have received the plans for the new block to be built at Wetaskiwin by the Merchants Bank of Canada. It will be three storeys and basement.

STRATFORD, ONT.—Orr & Russell, architects, are preparing plans for a two-story brick house for E. Borland, manager Borland Carriage Co.—S. R. Hesson will erect a building on his property on Ontario street, three stories, brick front, concrete sides, to be commenced about May 1st.—William Davidson, Secretary School Board, has requested that debentures be issued for the erection of a four-roomed addition to Romeo school building.—The City Council will likely take some steps in connection with a storm sewerage system, on which a report was recently submitted.—Building permits recently issued: James Bell, two-story brick residence, Rebecca street; R. J. Irwin, two-story brick veneer residence, one on Front street, other on Albert street.

OTTAWA, ONT.—Plans of Separate school building to be built at Alexandria, Ont., may be seen at the office of the Architectural & Engineering Co., Sparks street, this city. Tenders close April 1st. F. Gelinas, Secretary Department of Public Works, will receive tenders up to Wednesday, April 5th, for erection of an addition to the Royal Observatory, this city.—Plans of church to be built at Cobden may be seen at the office of M. C. Edey, architect, this city.—W. B. Garvock is about to prepare plans for new school buildings to be built this year. Including

repairs, the proposed expenditure is \$88,000.—Plans of breakwaters to be constructed at Freeport and Devil Island, I. S., may be seen at the Department of Public Works, this city. Tenders close April 14th and April 15th, respectively.—Stephen O'Brier, Secretary Ottawa Improvement Commission, will receive tenders up to Tuesday, April 11th, for supply of cement, hardware and timber required by the Commission during the current year. Plans at 110 Wellington Street.—The City Council will apply to the Legislature for permission to issue debentures for \$86,000 for new buildings and alterations.

VANCOUVER, B.C.—J. C. McClure proposes to establish a plant at Matsqui for the manufacture of fire brick, building bricks and vitrified sewer pipe.—The British Columbia Wire & Nail Co. have purchased 150 feet of property on the water front on which to build a nail factory.—E. W. Houghton, of Seattle, Wash., has been engaged to prepare plans for the new theatre building to be built by L. G. Wing on corner of Hastings and Abbott streets, which will be 100x120 feet, four stories, brick, cost \$50,000. Construction is to be commenced by April 15th.—George E. Bower has purchased two lots on west side of Granville street on which he will erect a substantial

## DREDGING

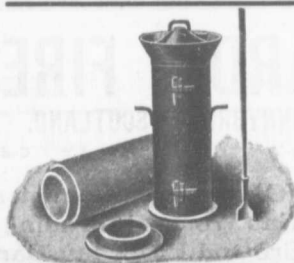
Filling water lots a specialty.  
Submarine work and wrecking.

SAND & DREDGING LIMITED,  
Tel. M. 4507. John St. Dock, Toronto.

## BITULITHIC :

One reason why the Bitulithic roadway maintains its popularity with those who demand the best of roadways is, that the "Bitulithic" standard of quality is never lowered in order to join the race for greater quantity.

The Warren Bituminous Paving Co., Limited  
164 Bay Street, TORONTO, ONT.



### GET THE BEST Combination Moulds

FOR MAKING

### Concrete Tile

with plain or Telescopic joints

Prices and Sizes on Application

### Sawyer & Massey Co.

Road Machine Dept.  
HAMILTON CANADA

building.—Plans have been completed for new public schools to be built at Cedar Cove and Grandview.—G. H. Tom, 602 Carl ave., is asking for tenders up to April 6th for excavation foundations and masonry for a memorial fountain to be erected in Stanley Park.—Plans have been prepared for a proposed addition to the city hall.—The Board of Works propose to expend \$300,000 on permanent improvements within three years, of which \$150,000 is to be spent this year.—Plans of a business block to be built on corner of Homer and Hastings streets, this city, for Stephen Jones, of Victoria, may be seen at the office of McClure & Fox, architects, Fairfield Block.—It is understood that tenders will be invited immediately for the new post-office here, which will cost upwards of \$400,000.

**HAMILTON, ONT.**—Charles Mills, architect, intends building a handsome residence for himself on corner of Macnab and Robinson streets, of red pressed brick and stone.—The Canadian Shovel & Tool Co. is being organized by Philip Dyer, of Easton, Pa., and Charles A. Holton, of this city. It is proposed to immediately build a factory in the annex, to comprise four buildings, one of which will be 288x88 feet.—It is understood that the Hamilton, Grimsby and Beamsville electric railway will not be extended to St. Catharines this year owing to the expensive bridges required.—The congregation of Zion Tabernacle have agreed to raise the necessary money for proposed improvements to the church.—A site has been secured on Earl street, near Barton street, for the new church for St. Philip's Parish.—The City Council will ask tenders for a street grader.—Stewart & Witton, architects, have been instructed by J. C. Myles to build a storage warehouse at corner of Main and Hughson streets, five stories, 66 feet square, of brick, with reinforced concrete floors.—Hon. C. S. Hyman, Acting Minister of Public Works, Ottawa, has promised that another \$30,000 will be placed in the supplementary estimates for improvements to the Bay front.—Munro & Mead, architects, are preparing plans for a warehouse to be built at corner of Sawford and Aikman avenues for Raymond L. Haskins.—Building permits have been granted as follows: Webber Bessey, brick house on Bold street, between Queen and Hess streets, cost \$2,000; Walter Buckbee, house on Erie ave., cost \$1,800; A. Martin, house on Mary street, cost \$2,100; Ald. Allen, house on Mary street, cost \$2,000; W. A. Edwards & Son, store and dwelling, corner Cheefer and Barton streets, cost \$2,900; E. J. Willard, six brick houses, corner Aikman ave. and Wentworth street, cost \$11,000 (Stuart McPhie, architect); George Scragg, two brick houses, corner Tom and Dundurn streets, cost \$1,500.

**MONTREAL, QUE.**—The Protestant Board of School Commissioners

have purchased property on Sherbrooke street, near St. Urbain, as a site for the new Senior school, and a committee has been appointed to report upon the style and equipment of the building.—Active steps are being taken to raise the funds for the Tabernacle Baptist church to be built in the east end.—The Molson's Bank will erect a branch bank this spring at the corner of Notre Dame and St. Remi streets, St. Henri.—S. Arnold Finley has returned from England, where he was interested in forming a company to purchase the block of land at the north end of Dominion square and to erect thereon a large hotel. Two plans are under consideration, involving an expenditure respectively of \$2,300,000 and \$3,000,000.—The City Council have not yet reached a decision regarding the purchase of a pumping engine.—The Canadian Northern Railway will build several additions to their system in the Province of Quebec this year. The shore line will be built from Shawinigan Junction to Quebec, a distance of 80 miles. There will be three heavy bridges on the line, crossing the St. Maurice, Ste. Anne and Jacques Cartier rivers. Another line to be built will be between St. Jerome and Morin's Flats, 13 miles. The company have asked the Montreal Harbor Commissioners to build a dock at the water front at Longue Pointe.—The following building permits have been granted: Jos. Cadieux, Garnier street, two-storey wood and brick dwelling and store, cost \$1,300; A. Charlebois, Aylwin street, three-storey wood and brick dwelling, cost \$3,000; A. Pilon, Huntley street, two-storey wood and brick dwelling, cost \$2,000; F. Labelle and Z. Lessard, Park ave., pair three-storey brick and stone dwellings, cost \$8,000; Israel Nantel, Dorion street, three-storey wood and brick dwelling, cost \$3,300; Thos. Collins, Hutchison street, eight three-storey brick and stone dwellings, cost \$16,000; J. A. Desrosiers, St. Andre street, two-storey wood and brick dwelling, cost \$1,500; S. D. Valieres, Park Lafontaine, three three-storey wood and brick dwellings, cost \$6,500; Royal Victoria Hospital, Pine ave., improvements to hospital, \$35,000; Sisters of Providence, St. Hubert and St. Demontigny streets, improvements to house, \$1,800; S. Burns, St. Lawrence street, improvements to house and store, \$1,500; Arthur Bastien, Vitre street, improvements to house and store, \$1,600; Estate L. C. Gravel, Craig street, improvements to house and store, \$6,000; City of Montreal, improvements to house, \$1,670.

**WINNIPEG, MAN.**—A. & W. Melville, architects, are asking for tenders by Monday, April 3rd, for erection of a seven-house frame terrace with stone basements on Kate Street for Mrs. Nimmons and for the erection of three frame residences

with stone basements.—J. H. Cadham, architect, wants tenders by 30th inst. for erection of addition to Robinson & Co.'s store, Albert street.—James Chisholm, architect, desires tenders by 31st inst. for erection of a stable for the Manitoba Cartage Co.—The congregation of Fort Rouge Methodist Church will hold a meeting to-night to decide upon plans for increased accommodation.—It is understood that the owner of the property at the north-west corner of Main street and Graham ave. will erect a six-storey brick block thereon this spring.—Darling, Pearson & Over, architects, are this week taking tenders for erection of a rectory for Holy Trinity church, Donald street, a brick residence on Donald street for H. A. D. Chalmers, and a building for the St. Charles Coultry Club. The latter building is estimated to cost about \$25,000.—Russell & Nicholls, architects, are taking tenders on a warehouse to be built on Bannatyne ave. and Charlotte streets.—Herbert Mathews is taking tenders on a stone and shingle residence on Stradbroke place for H. P. Dwight.—Rev. X. Portelance has taken tenders on erection of brick veneered church and rectory on corner of Bannatyne and Lydia streets.—Hooper & Walker, architects, have in hand alterations and additions to the Hoover building, James street.—John Dyke, of Liverpool, will this year add two or more stories to his block on corner of Main street and Graham ave.—L. A. Oldfield has decided to erect a store and office block on corner of Portage ave. and Smith street, the work to be commenced this month.—The National Supply Co. have purchased three acres of land near Notre Dame and McPhilip streets and will build a warehouse 95x100 ft.—Plans have been prepared by John D. Atcheson & Co., of Winnipeg and Chicago, for a five-storey business building to be erected on north side of Portage ave., near Hargrave.—Ald. Sandison, Charles W. Thorpe, R. J. Wilson, T. W. Pease and J. Bourbank have decided to build dwellings in Fort Rouge.—The Inter-West Peat Fuel Co. has been organized here, to develop the peat fuel industry in Manitoba.—Among the more important works to be undertaken by the city are the following: Sewer on Coydon ave., cost \$38,405; asphalt pavement on Canora street, from Preston ave. to Bath ave., cost \$13,035; on Ethelbert street, from Preston ave. to Bath ave., cost \$13,470; cedar block pavement on Logan ave., from McPhillips street to city limits, cost \$12,300; granolithic walk on south side of Bannerman ave., from Powers to Sinclair streets, cost \$5,014.—Herbert B. Rugh, architect, 927 Union Bank, is

### Speight & Van Nostrand LAND SURVEYORS, ETC.

Room 405 Temple Building, TORONTO, CAN  
Field Notes of the late F. F. Passmore.

## Fire Clay Products

# THE GLENYARDS FIRE CLAY CO.

BONNYBRIDGE, SCOTLAND.

Cablegrams: Glenyards, Bonnybridge.

Codes used, A.B.C. and Glenyards.

Manufacturers of all kinds of **Fire Clay Goods, Ganister and Silica Goods, for Iron and Steel Works and Gas Works, including Boiler Seating Blocks and Covers of all sizes. Ground Fire Clay, Ganister and Silica.** In all kinds of Packages

calling for tenders for brick veneer and plaster residence for C. D. Shepard. He has also prepared plans and specifications for a brick warehouse and office building, 40x72 ft., 3 stories and basement, to be built in Calgary for Tees & Perse, Ltd. Same architect is preparing plans for a brick residence for W. Carswell on Smith street, this city. Mr. Rugh will also let contracts shortly for alterations and additions to the banking room and fixtures of the Bank of Nova Scotia.

TORONTO, ONT.—The Northern Construction Co. are prepared to let grading contracts on the James Bay Railway. Particulars at their office near Don post office.—The Board of Control are asking for tenders up to Tuesday, 4th inst., for erection of a fire hall at corner of Herbert ave. and Queen street. Plans at office of the Property Committee, City Hall.—F. H. Herbert, architect, has just taken tenders on the erection of a five-storey factory on Mincing Lane for John W. Cowan, also for excavating required for a store and dwelling to be built on corner of Yonge and Dundonald streets.—Lindsay, Lawrence & Wadsworth are seeking incorporation for the French River Railway, to construct a railway from French River Harbor easterly through the Parry Sound district to Burk's Falls.—Carriere & Hastings, architects, New York, are preparing the plans for the new building to be built by the Traders Bank on corner of Yonge and Colborne streets.—H. H. Williams, 10 Victoria street, is this week taking tenders for the removal of the buildings at 243 and 245 Carlton street.—Frank Hillock, Albert street, wants tenders from all trades for erection of two brick houses.—J. Frances Brown, architect, is taking tenders for erection of a residence on Pembroke street.—Curry, Sproatt & Rolph, 90 Yonge street, want tenders by 30th inst. for taking down and removing a number of houses.—The Toronto & York/Radial Railway Co. are asking the Legislature to extend the time for the commencement of their railway and for permission to construct an extension to Bowmanville and Cobourg.—The Board of Control will apply to the Legislature for authority to issue \$20,000 of debentures for erection of a new morgue.—Bristol, Bayly & Armour, 103 Bay street, give notice of application to the Legislature to incorporate a company to construct a railway from this city to Ottawa.—The Central Canada Loan & Savings Company have completed the purchase of 80 feet on Victoria street, from No. 14 to No. 24, and have instructed Curry, Sproatt & Rolph to prepare plans for a building to be built at the corner of King and Victoria streets, to cost about \$150,000.—Tenders are wanted at 401 Brock ave. from all trades for erection of three brick fronted houses.—Building permits recently granted as follows: W. H. Lee, one-storey brick and stone drug store, south-east corner Avenue

road and Macpherson ave., cost, \$3,200; J. H. Mackenzie, two-storey brick drug store, east side Avenue road, near Roxborough ave., cost \$3,000; P. Rosenbes, pair two-storey brick dwellings, 93 and 95 William street, cost \$3,500; Dr. Thomas Butler, 2½ storey brick residence, 568 Manning ave., cost \$2,400; Mrs. Allen, four two-storey roughcast dwellings, brick fronts, concrete foundations, Defries street, near Mark, cost \$4,100; V. worthy Pinkerton, pair two-storey and attic brick and stone dwellings, west side Grace street near College, cost \$4,500; R. T. Greenless, pair two-storey roughcast dwellings, brick veneered fronts, west side Leslie street, near Gerrard, cost \$3,000; George Phillips, two pair two-storey stone and brick dwellings, 33 to 30 Major street, cost \$10,000; Brunswick, Balke, Collendar Co., four-storey brick factory, south side Pacific ave., near Atlantic, cost \$20,000; Mrs. John B. Murphy, two-storey and mansard brick addition to dwelling, 85 Bloor street east, cost \$4,000; H. M. Death, three pair 2½ storey stone and brick dwellings, Dovercourt road, near Hepbourne street, cost \$13,000; D. G. Chestnut, two-storey and attic stone and brick dwelling, north side Chestnut Park, near Cluny ave., cost \$5,000; John Drummer, two pairs two-storey dwellings, brick fronts, stucco sides and backs, west side Albany ave., near Dupont street, cost \$5,600; George H. Gooderham, four brick additional stories to building, 24 Temperance street, cost \$20,000; Joseph A. Gould, two-storey roughcast dwelling, brick foundation, Russett ave., near Bloor street, cost \$1,600; James Wythe and George Gaylor, pair two-storey and attic brick and stone dwellings, south side Bloor street, near Shaw, cost \$4,000; Henry McSherry, pair two-storey roughcast dwellings, brick veneered fronts, brick foundations, north side Dagmar ave., near Pape ave., cost \$3,000.

**CONSULTING ENGINEERS**  
**The Canadian Casualty and Boiler Insurance Co.**

22-24 Adelaide St. E. TORONTO  
Phone M. 4091  
A. M. WICKENS, Chief Engineer. A. G. C. DINNICK, Managing Director.

**THE GREY AND BRUCE PORTLAND CEMENT COMPANY**

of Shallow Lake, Limited.

Manufacturers of BRAND OF  
**"HERCULES" PORTLAND CEMENT**

Very finely ground. Unsurpassed for Sidewalks, Floors and all work requiring the Highest Grade of Portland Cement. For prices address.

A. D. CREASOR, Sec'y-Treas. Head Office, Owen Sound, Ont.

**JOSSON CEMENT** .. Manufactured at NIEL ON RUPELL

Is the Highest Grade Artificial Portland Cement and the Best for High Class Work. Has been used largely for Government and Municipal Works.  
TO BE HAD FROM ALL CANADIAN DEALERS

**C. I. de Sola, Manager in Canada. 180 St. James Street, MONTREAL**

**NO PATENTS! NO MONOPOLY! NO EXORBITANT PRICES!**

Vitrified Paving Blocks are the very best, everything considered, for paving business and residence streets. Furthermore, the original "Massillon" Blocks of which we are the sole manufacturers, are the best. Fourteen years of actual service in nearly all of the principal Canadian cities has established our reputation. Correspondence solicited.

**MASSILLON STONE & FIRE BRICK CO.,**

WM. G. HIPP, Gen. Mgr.

Massillon, Ohio, U. S. A

**DEBENTURES**

Municipalities contemplating the issue of Debentures will find it to their advantage to communicate with

**G. A. STIMSON & CO.**

Investment Dealers  
24 and 26 King St. W. TORONTO

**THE CANADIAN INSPECTION COMPANY, LIMITED**

Main Office and Laboratories:

146 St. James Street, MONTREAL

SPECIALTIES: Inspection of RAILS and all material for BRIDGES, BUILDINGS, and other structures, cast iron pipe, wood and steel railroad cars.

MANUFACTURE AND ERECTION.

Expert examination and reports, chemical analyses and physical tests of all kinds. Cement Testing.

**Notice to Contractors.**

**The Niagara Falls Machine & Foundry Co., Limited,**

Niagara Falls, Ont.,

are making a specialty of improved

**HOISTING AND BUILDING ENGINES.**

Write for Prices.

HEADQUARTERS FOR

**Pig Lead, Pig Tin, Solder, and Manganese Anti-Friction Babbitt Metal.**

**Syracuse Smelting Works**

Montreal, Que.

**M. BEATTY & SONS**  
WELLAND, ONT.

**Dredges, Ditchers, Derricks and Steam Shovels**

of various styles and sizes to suit any work.

Submarine Rock Drilling Machinery Hoisting Engines, Suspension Cableways, Horse-Power Hoisters, Gang Stone Saws, Centrifugal Pumps for Water, Sand and Gold Mining, and other Contractors' Plant.

*If Its*

**WATERWORKS PUMPING ENGINES**

**FIRE HYDRANTS**

OR

**VALVES**

for  
**Steam, Water, Gas and Radiation**

Get Catalog and Prices of

**THE KERR ENGINE CO'Y**

Limited

Walkerville - Ontario

**FIRES.**

Methodist church at Deseronto, Ont., damaged to extent of \$3,000.—Saw mill of Emilien Lupien at Wickham Station, Quebec, loss \$3,000, no insurance.—Saw mill of W. W. Shaw at Hartland, N. B., loss \$4,000, insurance \$1,600.—Residence and office of Dr. A. Hoy, South Mountain, Ont., totally destroyed.—Building of the Coulonge Hardware Co., Port Colborne, Ont., loss \$15,000.—Factory of the Durham Furniture Co., Durham, Ont., completely destroyed, loss \$50,000.—Flour mill of Alexander Dobson, Beaverton, Ont., almost totally destroyed, loss \$35,000.—Carriage show rooms of Tudhope & Co., Orillia, Ont., partially destroyed.

**CONTRACTS AWARDED.**

ESSEX, ONT.—Granolithic walks: Pettypiece Silix Stone Co., successful tenderers, 11 cents a square foot.

STRATFORD, ONT.—New R. C. church: Blonde Lumber Co. of Chatham, contractors; cost about \$20,000.

CALGARY, N. W. T.—Residence for A. C. Russell: Lawson & O'Gara, architects; J. A. Bishop, contractor.

FAIRFIELD, N. B.—Rebuilding break-water at Campbell's Cove, Kings county: Joseph McIntyre, this place, contractor.

BRIDGEBURG, ONT.—Brick veneered residence on Jarvis street for Dr. Mencke: Hanna Bros., Ridgeway, contractors.

HARRISTON, ONT.—Contracts have been let for residences for J. J. Pritchard, S. Clark, W. A. Gleuney and J. M. Mackay.

EDMONTON, N. W. T.—Power house for the Edmonton Street Railway Co.: Charles May, contractor; brick, 47x85 feet, one storey.

BRANDON, MAN.—Supply of cement: Hunter, Smith Hardware Company, successful tenderers, 76 cts. per 100 lbs. f.o.b. Brandon (Hercules brand).

SUDBURY, ONT.—Electrical apparatus and pump for waterworks system: Canadian General Electric Co., Toronto, successful tenderers, \$4,655.

HAMILTON, ONT.—W. O. Johnston & Bros., of Ohio, have been awarded the contract to grade the road bed for the Hamilton, Ancaster and Brantford electric railway.

DESERONTO, ONT.—Cement for corporation purposes: Canadian Portland Cement Co., \$2.25 per barrel in cotton bags, allowance of 40 cents for bags returned.

VICTORIA, B. C.—The contract for the superstructure of C. P. R. hotel has been let to A. E. Barratt, of Seattle, Wash., at \$500,000. F. M. Rattenbury is the architect.

FORT FRANCES, ONT.—The Atlas Portland Cement Co. have been awarded the contract to supply the Backus Brooke Syndicate with over 100,000 barrels of cement for the construction of the power dam here.

TORONTO, ONT.—Frank Simpson was the only tenderer for dredging slips; price 33, 1-3 cents and 23 1/2 cents per cubic yard.—Extension of Jarvis street sewer: Medler & Arnott, contractors, \$3.57 per lineal foot.

OTTAWA, ONT.—Four street watering carts: W. J. Campbell, successful tenderer, \$340 each.—Addition to the Western Block of the Parliament Buildings: George Goodwin, successful tenderer; cost about \$75,000.

MITCHELL, ONT.—The Mitchell Bridge Co. have secured the contract for two steel bridge superstructures in Howick Township, a steel bridge over Bayfield river between Perth and Huron counties, and a bridge in Mornington Township.

MONTREAL, QUE.—The Canadian Rubber Co. have secured the contract for

5,000 feet of fire hose for this city.—The Ontario Wind Engine & Pump Co., of Toronto, have secured a contract from the Canada Car Co. for the erection of a large tank.

FREDERICTON, N. B.—The Commissioner of Public Works has awarded the contract for rebuilding of Red Bank bridge over the Miramichi river, in parish of North Esk, to J. D. McLaughlin, of Mill Cove. Bridge will be seven spans, each 140 feet long, price about \$15,000.

NIAGARA FALLS, ONT.—Brick veneer residence for H. R. Misener; Architect, E. D. Pitt; masonry, Newman Bros., St. Catharines; carpentry, James Harriman; plumbing and heating, Clark & Co.; painting, R. A. Kelsey & Sons; electrical work, Martin Electric Supply & Construction Co.

WINNIPEG, MAN.—Waterworks supplies: Lead pipe, Jenkins & Hardy, \$4.47 1/2 for 100 lbs.; 500 valves, John Stevens Co., 80 cents each; stop cocks and lead pipe, R. Mitchell Co. and A. P. Smith Manufacturing Co.; pipe fittings, J. H. Ashdown Co., Miller-Morse Co. and Fairbanks Co.—Bungalow for the Manitoba Rifle Association: McCombe & McKay, contractors, cost about \$3,500.

COLLINGWOOD, ONT.—Store house for Captain G. Pearsall on Pine street: Architect, John Wilson; masonry and brick work, A. Court; wood-work, Mr. Peterman; roofing, J. A. Smith; tin-smithing, McFakzen & McQuade; painting, E. Ellis; brick, 110x35 feet, cost \$4,000.—Warehouse for C. Stephens Co.: Architect, John Wilson; masonry and brick-laying, R. Pattersen.

**NEW COMPANIES.**

Nanor Automobile Company, Limited, Toronto, incorporated, capital \$300,000, Directors, A. G. Ronan, mechanical engineer, William Bullock, and others.

Union Drawn Steel Company, Limited, Hamilton, incorporated, capital \$150,000, to manufacture iron and steel products. Directors, F. N. Beegle, E. C. Rebeske and J. A. McMahon, of Beaver Falls, Pa., Frederick Davidson, of Pittsburg, and George Davidson, of New Brighton, Pa.

Dominion Thread Mills, Limited, Toronto, incorporated, capital \$150,000, Directors, S. P. Biggs, E. K. Cullen, and others.

Walter Nicholls Motor Boat Company, Limited, Toronto, incorporated, capital \$25,000. Directors, Walter Nicholls, Frederic Nicholls, H. H. Macrae, and others.

Siemon Bros., Limited, Warton, Ont., incorporated, capital \$100,000, to manufacture and deal in furniture and building materials. Directors, J. L. Siemon, Andrew Siemon, Daniel Widmeyer, and others.

Mageau LeBlanc Lumber Company, Limited, Chapleau, Ont., incorporated, capital \$40,000, to manufacture lumber. Directors, Zotique Mageau, J. E. Serre, Oliver Laberge, M. A. LeBlanc and H. A. West.

Maestro Piano Company, Limited, Toronto, incorporated, capital \$40,000, to manufacture pianos, organs, etc. Directors, Ernest Garret, A. E. Ridgeway, and others.

Garson Quarries Company, Limited, Winnipeg, Man., incorporated, capital \$250,000. Directors, Peter Lyall, William Carson, and others.

Wire-Woven Wood Manufacturing Company, Limited, Woodbridge, Ont., incorporated, capital \$40,000, to man-

**Paving Granite**

Granite Sets for Street Paving —CURBING cut to any shape ordered. — Fine Rich Colors for Building and Monumental Purposes. Quarries, St. Philippe d'Argenteuil, P.Q.

Address all communications to

**JOS. BRUNET - COTE DES NEIGES, MONTREAL**

**RAILS** For Contractors, Switches, Girders, &c. New and Second Hand.

**LOCOMOTIVES AND CARS**

**John J. Gartshore**

83 Front St. West,

Opposite Queen's Hotel.) **TORONTO**

**ARTIFICIAL STONE PAVEMENTS**

**SIDEWALKS A SPECIALTY**

**CORPORATIONS** Will do well to consider our work and prices before letting contracts

**The Silica Barystic Stone Company of Ontario, Limited.**

WALTER MILLS General Manager. Head Office: INGERBOLL, ONT.

**T. A. Moppison & Co.**

**PURVEYORS TO**

Municipal Corporations  
Architects  
Engineers  
Mines  
Railway and Building

ROAD MACHINERY  
STONE CRUSHERS  
STEAM ROAD ROLLERS  
STEAM AND GASOLINE  
FIRE ENGINES  
BRICK AND STONE  
CONCRETE STONE  
ROOFING GRAVEL  
ROCK DRILLS  
BOILERS AND ENGINES  
CONTRACTOR'S PLANT

**CONTRACTORS**

204 St. James Street  
**MONTREAL**

**Fire Protection Apparatus**



**Wood and Steel Tanks, Steel Substructures, etc.**

Motive Power: —Win. Mills (Prompt Shipments) Gasoline Engines Hydraulic Engine\*

**ONTARIO WIND ENGINE AND PUMP CO. LTD TORONTO, CAN.**

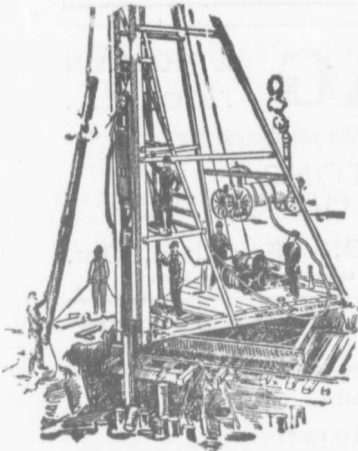


# The Canadian Bridge Co., Limited

WALKERVILLE, ONT.

## MANUFACTURERS OF RAILWAY AND HIGHWAY BRIDGES

Locomotive Turn Tables,  
Roofs, Steel Buildings and  
Structural Iron Work of all descriptions



### PILE DRIVING

on land or water by Steam Pile Drivers or Drop Hammers.

**Portable Boilers  
Hoisting Engines  
Pumping Machinery  
TO LET**

Bridge Building, Trestle Work, Wharves,  
Dams, Diving Submarine Work and  
General Contracting.

**WM. HOOD & SON**  
10 Richmond Sq. - MONTREAL

### Surveying and Drawing Instruments

*Best English Quality*

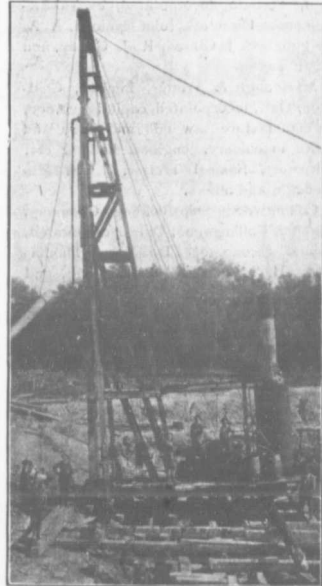
Manufactured by

**A. G. Thornton**  
Manchester, Eng.  
Surveyors' and  
Engineers' Supplies

Write Us For Catalogue  
and Prices

The

**C. H. MORTIMER  
PUBLISHING CO.**  
of Toronto, Limited  
AGENTS FOR CANADA  
Confederation Life Bldg., TORONTO  
Alliance Building, MONTREAL



### PILE DRIVING and Foundation Work.

By 5-ton Automatic Steam Pile Hammer,  
Water Jet or Drop Hammers, Dock Building,  
Submarine Work and Dredging.

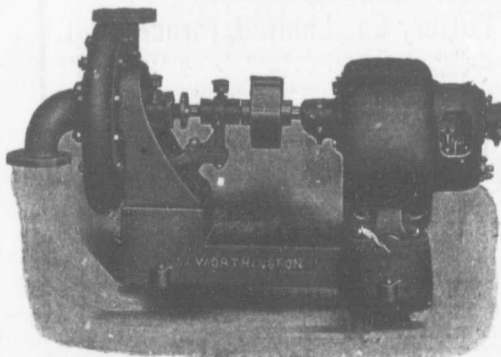
**BUILDING MOVER AND WRECKER**  
General Contracting.

**JNO. E. RUSSELL, - Toronto**  
908 Queen St E - Phone M. 3007.

If you want to reach Municipalities advertise in the  
CONTRACT RECORD.

# WORTHINGTON PUMPS

## FOR WATER WORKS SERVICES



Worthington Volute Pump and Direct Current Motor.

### "WORTHINGTON" TURBINE PUMPS

for heads up to 2,000 feet, are  
Reliable, Durable, Efficient  
and exceedingly simple

### BOILERS, TANKS, FILTERS, ETC., ETC.

If you are interested in Pumps and Receivers  
for Low Pressure Heating Systems, write for particulars and prices.

**The John McDougall Caledonian Iron Works Co.,**  
Montreal. Limited.

ufacture wire-woven wood and carry on a lumbering and saw-milling business. Directors, George Hallet, Frederick Bath, and others.

Brampton Pressed Brick Company, Limited, Brampton, Ont., incorporated, capital \$50,000, to manufacture pressed and paving brick, tiles, sewer pipes, etc. Directors, W. J. Packham, C. R. J. Packham and John MacHoover.

Dymond Gas & Engine Company, Limited, Toronto, incorporated, capital \$1,000,000. Directors, John Dymond, A. A. Wighton, C. J. Gibson, R. J. Goudy, and V. E. Taplin.

McKeough & Trotter, Limited, Chatham, Ont., incorporated, capital \$100,000, to manufacture saw mill and hoop and stave machinery, engines, boilers, etc. Directors, Samuel Trotter, J. F. McKeough, and others.

Collingwood Ship-Building Company, Limited, Collingwood, Ont., incorporated, capital \$1,000,000. Directors, Thomas Long, H. S. Osler, W. B. Raymond, and others.

Brown & Company, Limited, St. Marys, Ont., incorporated, capital \$40,000, to manufacture and deal in window sash, store and office trimmings, lumber, etc. Directors, George Brown, M. Telvin, Daniel Baird and T. J. Rundle.

St. Lawrence Wagon Company, Limited, Montreal, incorporated, capital \$75,000, to manufacture wagons, motor cars, implements, etc. Promoters, James Meldrum, R. A. Gentles, and others.

Pittsburg Gold Dredging Company, Limited, Peterboro, Ont., incorporated, capital \$300,000. Directors, William Hamilton, Matthew Smith, and others.

Battle Creek Health Food Company, Limited, Toronto, incorporated, capital \$30,000. Directors, Harrison Powell, George J. Van Nostrand, A. J. Van Nostrand and others.

Western Development Company, Limited, Toronto, incorporated, capital \$1,000,000; Promoters, J. W. Mitchell, Robert Armstrong, A. L. Malone, H. N. Asling and C. W. Fleming.

E. N. Moyer Company, Limited, Toronto, incorporated, capital \$150,000, to manufacture and deal in school and office furniture, etc. Promoters, E. N. Moyer, of Toronto, Harry R. A. Moyer, of Halifax, N. S., and others.

Toronto Woollen Machinery, Limited, incorporated, capital \$40,000, to manufacture and deal in woollen, cotton, textile and other machinery and supplies. Directors, Louis Bredanaz, Jules Bredanaz, J. M. Ewing, and others.

McPhee Automatic Signalling Company, Limited, Toronto, incorporated, capital \$100,000, to acquire and manufacture an invention for automatic signalling and stopping of railway trains. Directors, J. C. Kelley, of Toronto, Taylor McVeity, of Ottawa, and others.

Bellhouse, Dillon, & Company, Limited, Montreal, incorporated, capital \$45,000, to manufacture and deal in cements, paints, firebricks, etc. E. F. Surveyor, D. Armour, and others.

Canada Glue Company, Limited, Toronto, incorporated, capital \$100,000. Directors, Paul Kreismann, O. C. Butz, Franklin Rudolph and others, all of Chicago.

Northern Development Company, Limited, Montreal, incorporated, capital \$40,000, to carry on mining operations, construct hydraulic works, etc. Promoters, C. H. Archer, J. L. Perron, L. Beauchamp, J. E. Perrault, and N. A. Brais.



**.. SUBSTANTIAL CONTRACTORS ..**  
FURNISH BONDS OF  
**The United States Fidelity & Guaranty Co.**

A. E. KIRKPATRICK, Manager for Canada.  
6 COLBORNE STREET, - TORONTO, ONT.

**BLAST .. SLAG A MOLTEN FURNACE ROCK ...**

Cement Sidewalks, Road Foundation and Concrete Work

**STRONG AS STONE  
CHEAP AS GRAVEL**

**Doolittle & Wilcox, Hamilton, Ont.**

Toronto Agents: Sand & Dredging Limited, John Street Dock.

**PORTLAND CEMENT**

**Drain Pipes, Culvert Pipes**

**Sewer Bricks, Inverts**

**Building Bricks**

**Fire Clay Ganister**

**Road Paving Bricks and Blocks.**

**F. HYDE & CO.,**

*King, Queen and Wellington Sts. - MONTREAL*



**VULCANITE  
PORTLAND CEMENT**

The Recognized Standard  
for Sidewalks

A strictly High-Grade Portland Cement. Pronounced by prominent contractors to be the most Uniform Portland Cement on the market.

One Quality Only. Capacity 5,000 bbls. per day.

**The Toronto Pottery Co., Limited, Toronto, Ont.**

Office, 75 Cottenham Street **DISTRIBUTORS**

Yards 75-81

Long Distance Phone North 1787 and North 1152.

**Concrete Mixing Machinery**

SEND FOR CATALOGUES

**AREIAL CABLEWAYS,**

(BLONDINS)

**Hand, Steam and Electric Derrick Cranes,  
Etc., Etc., Etc.**

**E. F. Dartnell,** 180 St. James Street,  
**MONTREAL**  
DEALER IN BUILDING SUPPLIES, ETC.

MUNICIPAL ENGINEERS, CONTRACTORS AND MATERIALS

**WILLIS CHIPMAN**

Hon. Grad. McGill University.  
M. Can. Soc. C.E. M. Am. Soc. C.E.  
Mem. Am. W.W. Ass'n.  
**WATERWORKS, SEWERAGE WORKS, GAS  
WORKS, ELECTRIC LIGHT AND  
POWER PLANTS**  
Reports, Surveys, Construction, Valuations  
**103 BAY STREET - TORONTO**

**R. E. SPEAKMAN, C.E.**

A. M. Inst. C. E., 1878.  
**CONSULTING ENGINEER**

Waterworks, Sewerage and Sewage Disposal.  
Municipal Improvements.  
Granolithic Pavements.  
Electric Light Plants.  
Drainage and Irrigation of Land.  
Coal Handling Plant and Machinery.  
Plans, Specifications and Estimates.  
Construction and Valuations.

Canada Life Building - TORONTO

**E. VON DER OSTEN & CO.,**

Consulting Engineers  
Industrial Plants, Waterworks,  
Lighting and Power Plants  
Sewerage and Sewage Disposal  
Garbage Reduction Plants  
Municipal Improvements  
Roncesvalles Ave. & High Park Road,  
TORONTO, ONT.

Cable: Ackcoil

**J. J. COLLINS**

B.A.S., C.E., M.E., E.E.  
Consulting Engineer  
Ottawa, Ont., Canada

**RODERICK J. PARKE**

A.M. Can. Soc. C.E. A.M. Amer. Inst. E.E.  
**CONSULTING ELECTRICAL ENGINEER.**  
Electrical Light and Power.  
Steam Plants, Gas Power Plants, Water  
Power Plants.  
Estimates, Tests, Reports, Valuations.  
82-53 Jones Building - TORONTO, CAN.  
Long Distance Telephones-Office and Residence  
Cable Address "Rodparke" (W. U. Code.)

**John H. Jackson**

**CIVIL ENGINEER**  
WATER POWER, ELECTRIC RAIL-  
WAYS, STRUCTURAL STEEL.  
Niagara Falls, Canada  
Associated with Charles H. Mitchell,  
C. E., Hydraulic Engineer.

Please mention this paper when cor-  
responding with advertisers.

**CECIL B. SMITH, M.A.E.**

M. Can. Soc. C.E.  
**Constructing and Consulting Engineer**  
Hydraulic Power Plants, Municipal, Railway,  
and general Civil Engineering Work.  
Plans, Estimates, Specifications, Reports.  
Cement, Concrete, and Steel Concrete  
**CEMENT TESTING LABORATORY**  
Rates for testing on application.  
**36 Toronto Street, Toronto.**

**CEMENT WALKS**

Built in 40 Towns and Cities with entire satis-  
faction. Write us for information and price.

**Forest City Paving Co.,**

B. V. HOLE, Manager. LONDON, ONT.

**THE ONTARIO ASPHALT BLOCK CO., L'T'D.**

MANUFACTURERS OF

**ASPHALT BLOCK PAVING**

Information and samples furnished municipalities on application.

Main Office: WINDSOR, ONT.

Works: WALKERVILLE, ONT.

**THE CANADIAN SEWER PIPE CO.**

MANUFACTURERS OF



FOR

**Sewers, Culverts and Water Pipes**

*Inverts for Brick Sewers*

WRITE FOR DISCOUNTS

ST JOHNS, P.Q.

HAMILTON, ONT.

TORONTO, ONT.

**ALSEN'S, 45 Broadway, NEW YORK**

**THE OFFICIAL PRACTICAL  
TEST OF CONCRETE VAULT  
LIGHT CONSTRUCTION**

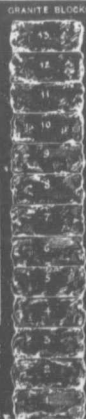
UNDER THE PERSONAL DIRECTION  
OF

WM. BARCLAY PARSONS, C.E., M. Am. Soc. C.E.  
CHIEF ENGINEER R. T. COMMISSION

AND

S. L. F. DEYO, C.E., M. Am. Soc. C.E.  
CHIEF ENG. R. T. SUBWAY CONSTRUCTION CO.

ALSEN'S HAS BEEN SELECTED IN PREFERENCE  
TO ALL OTHER BRANDS, FOR THE SUBWAY  
RAPID TRANSIT STA-  
TIONS OF THE ENTIRE  
SYSTEM, REACHING  
FROM THE BATTERY  
TO THE BRONX.



MERELY SUSPENDED BETWEEN I-BEAMS  
A SLAB OF

**ALSEN CONCRETE**

2 INCHES THICK  
6 FEET WIDE  
12 1-2 FEET LONG  
30 DAYS OLD

SUSTAINED 11 882 POUNDS OF  
CONCENTRATED WEIGHT

ON AN IRON DISC 8 1-2 IN. IN DIAMETER

THOUGH HIGHEST IN PRICE, ALSEN'S IS BEING  
USED IN THIS VERY IMPORTANT CONSTRUCTION,

NOT ONLY BECAUSE OF ITS  
GREATER STRENGTH, BUT  
CHIEFLY BECAUSE OF ITS  
**ABSOLUTE SAFETY**  
IN ACTUAL WORK.



MADE BY TUCKER & VINTON, INC., NEW YORK CITY.  
RANSOME PATENTS

Prices of Building Materials.

LUMBER

| CAR OR CARGO LOTS, F.O.B. TORONTO.     |                    | Per M. Ft. |  |
|----------------------------------------|--------------------|------------|--|
| 1 inch No. 1 Pine cuts and better      | \$48.00 to \$50.00 |            |  |
| 1½ to 2 inch No. 1 cuts and better     | 51.00              | 53.00      |  |
| 1½ to 2 inch No. 3 cuts and better     | 38.00              | 39.00      |  |
| 1 inch Pine Dressing and better shorts | 25.00              | 27.00      |  |
| 1 x 4, 5 and 8 Common                  | 18.00              | 19.00      |  |
| 1 x 10 and 12 Common                   | 19.00              | 21.00      |  |
| 1 inch mill run sidings                | 21.00              | 22.00      |  |
| 1 inch mill run                        | 20.00              | 21.00      |  |
| 2 x 10 and 12 mill culls               | 15.00              | 16.00      |  |
| 1 inch dead cull sidings               | 12.00              | 13.00      |  |
| 1½ inch Flooring                       | 26.00              | 27.00      |  |
| Hemlock, 1 x 4 to 8 inch               | 14.50              | 15.50      |  |
| 2 x 4 to 10 inch, 12 to 16 feet        | 15.00              | 16.00      |  |
| 2 x 4 to 10 inch, 18 feet              | 16.00              | 17.00      |  |
| 1½ inch No. 1 4 ft. Pine Lath          | 3.00               | 3.50       |  |
| 1½ inch No. 2 4 ft. Hemlock Lath       | 2.80               | 2.90       |  |
| XXXX Pine Shingles                     | 2.90               | 3.00       |  |
| XXX Cedar Shingles                     | 2.80               | 2.90       |  |
| B. C. Shingles:                        |                    |            |  |
| XXXX 6 butts to 2 inch                 | 2.60               |            |  |
| XXXX 6 to 2½-16 inch                   | 2.80               |            |  |
| XXXXXX 5 to 2 inch                     | 3.15               |            |  |

HARDWOODS—PER M. FEET CAR LOTS.

|                                            |                    |       |  |
|--------------------------------------------|--------------------|-------|--|
| Ash, white, 1sts and 2nds, 1 to 2 inch     | \$33.00 to \$35.00 |       |  |
| Ash, black, 1sts and 2nds, 1 to 1½ inch    | 27.00              | 20.00 |  |
| Birch, M. K. 1 inch                        | 22.00              | 24.00 |  |
| " " 1½ inch to 2                           | 23.00              | 25.00 |  |
| Basswood, Common and better, 1 to 1½ inch  | 24.00              | 25.00 |  |
| Basswood, 1½ to 2 inch                     | 25.00              | 26.00 |  |
| Hm, soft, mill run, 1 to 1½ in.            | 24.00              | 25.00 |  |
| Hm, rock, mill run, 1 to 1½ in.            | 24.00              | 25.00 |  |
| Maple, common and better, 1 to 1½ inch     | 21.00              | 22.00 |  |
| Oak, red plain, 1sts and 2nds, 2 to 4 inch | 44.00              | 46.00 |  |
| Oak, white, 1sts and 2nds, 1 to 1½ inch    | 42.00              | 44.00 |  |
| Oak, quartered, 1sts and 2nds              | 70.00              | 80.00 |  |

SLATE. Toronto. Montreal.

|                                |       |       |  |
|--------------------------------|-------|-------|--|
| Roofing (per square):          |       |       |  |
| red... - -                     | 30 00 | 31 00 |  |
| purple...                      | 9 00  | 10 00 |  |
| unfading green                 | 10 00 | 11 00 |  |
| oak...                         | 9 00  | 9 00  |  |
| Terra Cotta Til., per sq.      | 23 00 | 24 00 |  |
| Ornamental Black Slate Roofing |       | 77 00 |  |

(Continued on page 13.)

Established 1898  
**The Hanover Portland Cement Co., Ltd.**  
 Hanover, Ontario  
 Manufacturers of the Celebrated  
**"SAUGEEN" Brand PORTLAND CEMENT**  
 of  
 Prices on application

**FIREMEN'S LADDERS  
 —AND—  
 LADDER TRUCKS**

We make the lightest, quickest, strongest and cheapest. Every Town and Village needs them and can afford them. They will save 50 times their price in insurance premiums. Write for circulars and quotations.

**THE WAGGONER LADDER CO., Limited**  
 LONDON - - - - - ONT

**Giant Brand Portland Cement**

MADE BY

**THE ONTARIO PORTLAND CEMENT Co. LIMITED.**

HEAD OFFICE: BRANTFORD, ONT. LONG DISTANCE 'PHONE 1904

**THE CANADIAN PORTLAND CEMENT COMPANY, LIMITED**

Manufacture **"RATHBUN'S STAR"** Brand

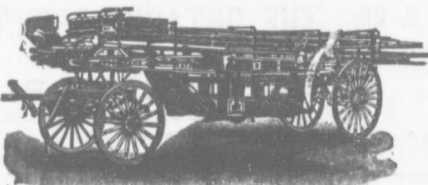
The Leading Canadian Portland Cement.

SALES OFFICES:

310-312 Front Street, West, Toronto. 202-203 Board Trade Building, Montreal.

**LIGHTNESS, STRENGTH AND ECONOMY**

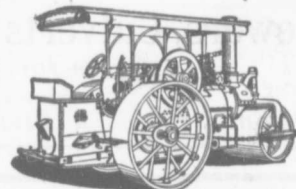
Seagrave Patent Trussed Ladders, Trussed Aerial, City Service and Village Hook and Ladder Trucks, Combination Hook and Ladder Trucks and Chemical Engines, Trussed Trucks and Hand Pumps, Combination Hose Wagons and Chemical Engines, Hose Wagons, Combination Hook and Ladder Trucks and Hose Wagons, Chemical Engines, Fire Extinguishers, Hose Reels, Patrol Wagons, Ambulances, Speciality Wagons, Patent Sleigh Runners, and other Modern Fire Fighting Tools.



Prompt attention given all inquiries. All goods built to order.

Long Distance Phones 686 and 684 **W. E. SEAGRAVE, WALKERVILLE ONT.**

**"WATEROUS"  
 ROAD MACHINERY AND  
 FIRE APPARATUS**



FIRE ENGINES in five sizes, with a full line of fire-fighting goods

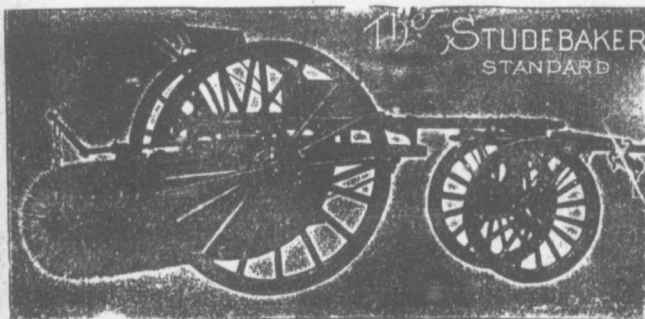
We Rebuild other makes of Fire Engines with our patent Boiler.

**BRANTFORD PITTS DOUBLE ENGINE STEAM ROAD ROLLER**

IN THREE SIZES—10, 12 and 16 ton.

CORRESPONDENCE SOLICITED.

**HUGH CAMERON & CO.,** Selling Agents, 72 Queen St. West, Manning Chambers, TORONTO



**Studebaker Sprinkler**

(PATENT IMPROVED.)

Does not clog or get out of order. Greatest width of spray Can be graded from driver's seat to any volume.

IMPROVED VERTICAL SPRAY

for Pavements.

**Patent Improved Street Sweeping Machine**

Is the Standard of Perfection

Because no sweeper so effectually does the work for which it is designed as "The Studebaker." It Sweeps Clean. No sweeper is constructed with the same degree of care and mechanical precision. It Wears Well. "The Studebaker" has the smallest number of working parts, and has less gearing than any other sweeper made. It is free from all unnecessary complications. With reasonable care it does not get out of order. Send for complete descriptive catalogue.

**Geo. Heaman, Mnfr., London, Ont.**

**Prices of Building Material**  
(Continued from page 12.)

**PRESSED BRICK, Per M.**  
DON VALLEY BRICK WORKS.  
Nos. 1, and 2, Red Pressed Bricks.....  
Nos. 1 and 2 Buff Pressed Brick.....  
No. 1 Brown Pressed Brick.....  
Pompelian Red, Buff and Brown Pressed Bricks.....  
Ornamental Bricks of all kinds for Mantel purposes.....  
Enameled Bricks of all Colors.....  
Porous Terra Cotta Fireproofing of all Descriptions.....  
Vitrified Street-Paving Bricks.....  
Semi-Vitrified Foundation Bricks.....  
Common Stock Red and Grey Bricks.....  
Sewer Bricks.....  
Stone or Macadamized Roadways.....

Please write to head office, 34 Toronto St., Toronto, for catalogue and prices.

**MILTON PRESSED BRICK AND SEWER PIPE CO.**  
F.O.B. F.O.B.  
Milton, Ont. Montreal

|                    |         |
|--------------------|---------|
| Red No. 1.....     | \$18 00 |
| " 2.....           | 16 00   |
| " 3.....           | 14 00   |
| Buff No. 1.....    | 20 00   |
| " 2.....           | 18 50   |
| Brown.....         | 25 50   |
| Roman Red.....     | 30 50   |
| " Buff.....        | 33 50   |
| " Brown.....       | 40 50   |
| Hard Building..... | 12 00   |
| " Sewer.....       | 13 00   |
| " Backing.....     | 11 50   |

Please write to head office for catalogue and prices.

**TORONTO PRESSED BRICK AND TERRA COTTA WORKS**  
F.O.B. F.O.B.  
Milton, Ont.

|                    |       |
|--------------------|-------|
| Red No. 1.....     | 13 00 |
| " 2.....           | 15 50 |
| " 3.....           | 9 00  |
| Buff No. 1.....    | 15 00 |
| " 2.....           | 13 00 |
| Brown.....         | 15 00 |
| Roman Red.....     | 30 00 |
| " Buff.....        | 35 00 |
| " Brown.....       | 41 00 |
| Hard Building..... | 8 10  |
| " Sewer.....       | 7 5 0 |
| " Backing.....     | 6 00  |

Moulded Ornamental from \$2.00 to \$5.00 per 100' Terra Cotta string Courses and Friezes, from 50c. to \$2.00 per ft. run.  
Roofing Tiles, \$20.00 per 1,000.

**BEAMSVILLE BRICK AND TERRA COTTA CO.**  
F.O.B. F.O.B.  
Beamsville, Montreal.

|                                                           |         |
|-----------------------------------------------------------|---------|
| Red Peerless Facing.....                                  | \$21 50 |
| " No. 1.....                                              | 14 00   |
| " No. 2.....                                              | 17 50   |
| " No. 3.....                                              | 10 50   |
| Brown Peerless Facing.....                                | 20 00   |
| " No. 1.....                                              | 18 00   |
| Buff Peerless.....                                        | 20 00   |
| " No. 1.....                                              | 18 00   |
| " No. 2.....                                              | 15 00   |
| Moulded and Ornamental Bricks from \$3 to \$10 per C..... | 35 50   |
| Roman Red (Size 12 x 4 x 2 1/4 in.).....                  | 30 00   |
| " Buff.....                                               | 30 50   |
| " Brown.....                                              | 34 00   |
| Vitrified Pavin, Brick No. 1.....                         | 18 00   |
| " " " No. 2.....                                          | 18 00   |
| Sewer.....                                                | 8 00    |
| Roofing Tile.....                                         | 22 00   |

**FIRE BRICK**  
**TORONTO POTTERY CO.** F. O. B. Toronto

|                   |          |
|-------------------|----------|
| Bo. d.....        | 25 00 M. |
| W. W. Co.....     | 27 50 M. |
| Savage Crown..... | 28 50 M. |
| Ramsay.....       | 30 00 M. |

**MASSEILLON STONE AND FIRE BRICK CO.**

|                                |         |
|--------------------------------|---------|
| A 1 brand, f.o.b. Toronto..... | \$36 50 |
| No. 1.....                     | 29 50   |
| " 2.....                       | 21 00   |

**PAVING BRICK**  
**MASSEILLON STONE AND FIRE BRICK CO.**

|                                                |         |
|------------------------------------------------|---------|
| Repressed Blocks, car lots f.o.b. Toronto..... | \$39 00 |
|------------------------------------------------|---------|

(Continued on page 14)

**THE PHOENIX BRIDGE & IRON WORKS, LIMITED**  
**MONTREAL**  
**GENERAL STEEL CONTRACTORS**

Large Stock I BEAMS, CHANNELS, ANGLES, TEES, ZEES and PLATES always on hand.

**Dominion Bridge Co., Ltd.**

P. O. Address, MONTREAL, P.Q.  
Works at LACHINE LOCKS, P.Q.

**STEEL BRIDGES**  
For Railways and Highways  
Piers, Trestles, Water Towers  
Tanks, Buildings, Roofs, Girders,  
Beams and Columns

Toronto Agent: GEO. E. EVANS,  
38 Canada Life Bldg., TORONTO, ONT



The Highest Grade of American  
**Portland Cement is "Iron Clad"**

It is the most finely ground (97 per cent. passing No. 100 sieve) and most uniform, having a Ten Years' Record. Used on some of the most important work in Canada and U. S. A.

Prices on application to all dealers, or to  
**The Glens Falls Portland Cement Co.,**  
224 Board of Trade, MONTREAL, P. Q.  
W. A. COOK, Agent

**PORTLAND CEMENT**

**T. M. Morgan**



Manufactures the  
**CRESCENT AND DIAMOND BRANDS**  
AS GOOD AS THE BEST FOR ANY PURPOSE

Office and Works: Longue Point, MONTREAL, QUE.  
Long Distance Phone R. 436 Ring 2.



**"Lehigh" Portland Cement**

Capacity 11,000 Barrels every Day in the Year.

For Sidewalks and all other work requiring the highest quality Portland Cement Used by the U.S. Government and the largest contractors and users of Portland Cements in the United States.

Absolutely the most popular Cement in Canada on account of its merits  
For Prices, etc., address  
**THORN CEMENT CO. - Buffalo, N. Y.**

**The Locomotive and Machine Company**  
**OF MONTREAL, LIMITED**

**Structural Steel**  
FOR ALL PURPOSES

NEW YORK OFFICE: 25 BROAD STREET N.Y.  
WORKS: LONG POINT MONTREAL

BRIDGES NEW AND SECOND HAND CONTRACTOR'S LOCOMOTIVES STEAM SHOVELS

Principal Office: Imperial Bank Building, MONTREAL

Prices of Building Material

(Continued from page 13)

| STONE.                                                                                                                                                         |          | Toronto.       | Montreal    |
|----------------------------------------------------------------------------------------------------------------------------------------------------------------|----------|----------------|-------------|
| Common Rubble, per cubic foot, delivered at building                                                                                                           | 13 50    |                | 11 00       |
| Large flat Rubble, per ton, delivered                                                                                                                          | 14 00    |                | 18 00       |
| Foundation Blocks, per c. ft.                                                                                                                                  | 43       |                | 30          |
| Granite (Stanstead) Ashlar, 6 in. to 12 in., rise 9 in., per ft.                                                                                               |          |                | 25          |
| Amherst Red Sandstone, N.S., per cubic foot, on cars at quarry 40c. . . . . at quarry                                                                          |          |                | 40          |
| Sackville, N.B., brown or red stone f.o.b. Quarries asilion                                                                                                    | 45       |                | 45          |
| Myers-Northport Red or River Philip Gray Sandstones f.o.b. per cubic foot                                                                                      | 75       |                | 65          |
| Stanstead granite paving blocks, 8 in. 10 12 in. x 6 in. x 4 1/2 in. per M. . . . . Granite curbing stone, 6x 9 in. per lineal foot                            |          | 50 00          | 70          |
| Buctouche Olive Freestone Olive Sandstone (Indian-town, N.B.)                                                                                                  | 85       |                | 65          |
| Brown Sandstone (Sackville, N.B.)                                                                                                                              | 80       |                | 70          |
| Moat red sandstone, per cu. ft.                                                                                                                                |          | 80             | 70          |
| Black Pasture buff stone per cu. ft.                                                                                                                           |          |                | 60          |
| Hagersville Crushed Stone per ton                                                                                                                              | 1 25     |                | 50          |
| Nova Scotia blue grey, per cu. ft.                                                                                                                             |          |                | 65          |
| Coursers, 6 to 8 in. f.o.b. St. Mary's, per cord                                                                                                               |          |                | 7 00        |
| Footing, 6 to 10 in. per cubic ft.                                                                                                                             |          |                | 15          |
| Dimension Stone, f.o.b. St. Mary's, per cubic foot                                                                                                             |          |                | 35          |
| Granite (Laurentian Pink) Ashlar, 6 to 12 in., rise 9 in., per cft.                                                                                            |          |                | 25          |
| Dimension Stock Granite, (Laurentian Pink) for building purposes, per c. ft., f.o.b. quarries Do., for polishing purposes, up to 2 tons weight, per cubic foot |          | 70             |             |
|                                                                                                                                                                |          | F.O.B. Halifax | 40          |
| Dimension stock granite for building purposes, per cu. ft. Do., for polishing purposes, up to 2 tons weight, per cubic ft.                                     |          |                | 1 00        |
| Paving sets, per thousand block                                                                                                                                |          |                | 60 00       |
| CREDIT VALLEY STONE, F.O.B. Quarries.                                                                                                                          |          |                |             |
| Rubble, per ton                                                                                                                                                |          |                | 60          |
| Brown Coursing, up to 10 per sup. yard                                                                                                                         |          |                | 1 75        |
| Brown dimension, per cub. ft.                                                                                                                                  |          |                | 70          |
| Grey coursing, per sup. yard                                                                                                                                   |          |                | 1 25        |
| Grey dimension, per cub. ft.                                                                                                                                   |          |                | 43          |
| ROMAN STONE, F. O. B. Factory.                                                                                                                                 |          |                |             |
| 6" x 3" Silla, tooled seated and throated 35c. per lineal foot                                                                                                 |          |                |             |
| Window Heads and Ashlar, 40c. per square foot                                                                                                                  |          |                |             |
| Window and Door Quoins tooled 40c. per superficial foot                                                                                                        |          |                |             |
| String Courses, Molded or Ornamental, 6" to 12" rise 50c to \$1.50 per lineal foot                                                                             |          |                |             |
| Hollow wall tooled finish 74" thick 40c. per square foot                                                                                                       |          |                |             |
| LIME, Toronto.                                                                                                                                                 |          |                |             |
| White Lime, per ton, Delivered                                                                                                                                 | \$8 00   |                |             |
| Grey                                                                                                                                                           | 7 00     |                |             |
| PORTLAND CEMENT (CARLOADS.)                                                                                                                                    |          |                |             |
| Canadian (Packages, 350 lbs. net.):                                                                                                                            | Toronto. | Montreal       |             |
| Rathbun's Star                                                                                                                                                 | 1 70     | 2 00           | 1 80 2 00   |
| Trowel                                                                                                                                                         |          |                | 1 85 1 95   |
| Samson                                                                                                                                                         | 1 75     | 1 85           |             |
| Magnet                                                                                                                                                         | 1 55     | 1 65           |             |
| Monarch                                                                                                                                                        | 1 60     | 1 90           | 1 90 2 00   |
| Hercules                                                                                                                                                       | 1 75     | 1 75           |             |
| Imperial                                                                                                                                                       |          |                | 1 80        |
| Crescent 375 lbs. gross                                                                                                                                        | 2 30     | 2 40           | 1 95 2 05   |
| Diamond 350                                                                                                                                                    | 2 30     | 2 30           | 1 85 1 95   |
| "Giant" Braniford                                                                                                                                              | 1 75     | 2 00           | 2 00 2 30   |
| American (in Bags)                                                                                                                                             |          |                | 1 90 2 00   |
| "Helderberg"                                                                                                                                                   |          |                | 2 25        |
| Alsen                                                                                                                                                          |          |                | 2 10 2 20   |
| Lehigh, in bbls., 375 lbs. cotton sacks, 350 net                                                                                                               | 2 35     | 2 00           | 2 00        |
| " "                                                                                                                                                            | 2 10     |                | 1 85        |
| "Iron Clad" in bags 350 lbs.                                                                                                                                   |          |                | 1 80 1 90   |
| "Invicta" " " "                                                                                                                                                |          |                | 1 65 1 70   |
| "Adirondack" " " "                                                                                                                                             |          |                | 1 50 1 65   |
| Vulcanite (The Toronto Pottery Co., Toronto) 350 lbs. per bbl. in paper bags                                                                                   |          | 1 80           |             |
| " " wooden bbls.                                                                                                                                               |          | 2 00           |             |
| " " cotton bags                                                                                                                                                |          | 2 10           |             |
| English (in Barrels):                                                                                                                                          |          |                | 2 00 2 10   |
| Brook's Shoobridge Anchor                                                                                                                                      | 2 35     | 2 40           |             |
| Belgian (in Barrels):                                                                                                                                          |          |                | 2 30 2 40   |
| "Josson                                                                                                                                                        | 2 50     | 2 70           |             |
| "North's Cond.                                                                                                                                                 | 2 05     | 2 10           | 2 25 2 30   |
| "White Cross                                                                                                                                                   | 1 90     | 2 00           | 1 75 1 80   |
| Hammer                                                                                                                                                         |          |                | 1 80 1 90   |
| White Star                                                                                                                                                     | 2 15     | 2 25           | 1 90 2 00   |
| Samson                                                                                                                                                         |          |                | 1 80 1 90   |
| German (in Barrels):                                                                                                                                           |          |                | 2 35        |
| Offenbacher                                                                                                                                                    |          |                | 2 48        |
| Alsen                                                                                                                                                          | 2 65     | 2 95           |             |
| Dyckerhoff                                                                                                                                                     | 2 65     | 2 75           | 2 40        |
| Hercules                                                                                                                                                       | 2 25     | 2 35           | 2 15        |
| Keene's Superfine "Whites"                                                                                                                                     | 10 00    | 12 00          | 8 50 9 00   |
| Keene's Coarse "Whites"                                                                                                                                        | 6 50     | 7 00           | 4 50 5 00   |
| Fire Bricks, Newcastle, per M                                                                                                                                  | 27 00    | 34 00          | 18 00 22 00 |
| " " Scotch                                                                                                                                                     | 28 00    | 35 00          | 19 00 23 00 |
| Plaster, Calcined, N.B.                                                                                                                                        | 1 70     |                | 1 60        |

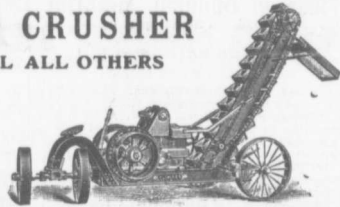
CLIMAX STEEL CRUSHER

PORTABLE - EXCEL ALL OTHERS

SIZES, 8 x 10 9 x 15 10 x 20 STATIONARY, 10 1/2 x 22 12 x 28

Send for Prices

CLIMAX ROAD MACHINE CO. Hamilton, Ont.



PORTLAND CEMENT SAMSON BRAND MAGNET BRAND

MANUFACTURED BY

THE OWEN SOUND PORTLAND CEMENT COMPANY, LIMITED

Owen Sound, Ont.

Works at SHALLOW LAKE, ONT.

Write us for prices

McGREGOR & McINTYRE, LIMITED

67 to 91 Pearl Street, Toronto, Ont.

STRUCTURAL IRON WORKS

Fire Escapes, Library Racks, Sidewalk Door, Jail Cells, Iron Stairs, Railings, Etc., Etc.

SOLE AGENTS FOR DUPLEX HANGERS

WRITE FOR ESTIMATES.

Portland Cement...

HIGH GRADE GERMAN BRANDS FOR GRANOLITHIC AND ARTIFICIAL STONE SIDEWALKS.

Sewer Pipes, Best English Cements. Best Belgian Cements Culvert Pipes, &c. W. McNALLY & CO., Montreal

PORTLAND CEMENT

CANADIAN AND AMERICAN

When in the market for Portland Cement write for our prices. Every barrel of our cement guaranteed to meet the specifications under which it is furnished. We deliver anywhere in Canada and in any quantity.

Our latest pamphlet "THE TEST OF TIME" mailed on application.

KENNEDY STINSON & COMPANY

Temple Building, Montreal, Que.

PORTLAND CEMENT

SEWER PIPES

FIRE BRICKS

FIRE CLAY

ALEX. BREMNER

50 Bleury Street, MONTREAL

W. & F. P. CURRIE & CO.

345 St. James St., Montreal

SEWER PIPES,

CULVERT PIPES, ETC.

VENT LININGS,

FLUE COVERS,

FIRE BRICKS,

FIRE CLAY,

WHITING.



Importers of PORTLAND CEMENTS,

HIGH GRADE ENGLISH

" " GERMAN

" " BELGIAN

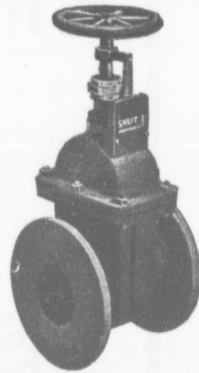
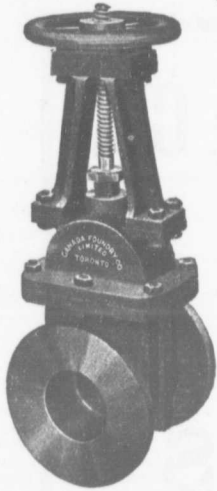
PLASTER OF PARIS

BORAX,

CHINA CLAY.

# WATERWORKS SUPPLIES

OF EVERY DESCRIPTION  
Cast Iron, Gas and Water Pipe  
Valves, Hydrants, Valve Boxes  
Special Castings



## Railway Supplies, Structural Steel, Ornamental Ironwork CANADA FOUNDRY COMPANY LIMITED

Head Office and Works: TORONTO, ONT.

District Offices: MONTREAL HALIFAX OTTAWA WINNIPEG CALGARY VANCOUVER ROSSLAND

THOS. J. DRUMMOND,  
President

JAMES J. McCALL,  
Secretary-Treasurer

C. ED. GUDEWILL,  
Vice-President

### Montreal Pipe Foundry Co., Limited

Special  
Castings  
Flange Pipe  
Branches  
Hydrants  
Valves



### CAST IRON PIPE

Valve Boxes  
and  
general  
Water  
Works  
Supplies

Works at: { LACHINE, QUE.  
THREE RIVERS, QUE  
LONDONDERRY, N. S.

Combined daily capacity:  
175 Tons Pipes and Castings.

HEAD OFFICE CANADA LIFE BUILDING.

MONTREAL

JAMES THOMSON, President. J. G. ALLAN, Vice-President. JAMES A. THOMSON, Secretary. ALEX. L. GARTSHORE, Treasurer.

### THE GARTSHORE-THOMSON PIPE & FOUNDRY CO. LIMITED.

Manufacturers of

Flexible and Flange Pipe,  
Special Castings and all kinds of  
Waterworks Supplies



### CAST IRON PIPE

3 inches to 60 inches diameter.

For Water, Gas, Culvert and Sewer

HAMILTON, ONT.

# F. H. HOPKINS & CO.

RAILWAY  
CONTRACTORS  
and  
MINING

## SUPPLIES

### RANSOME

Concrete  
Mixers

### GATES

Gyratory  
Crushers

COMPLETE CRUSHING AND CONCRETE PLANTS

CORRESPONDENCE SOLICITED

MONTREAL