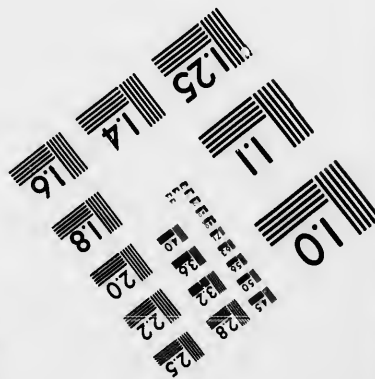
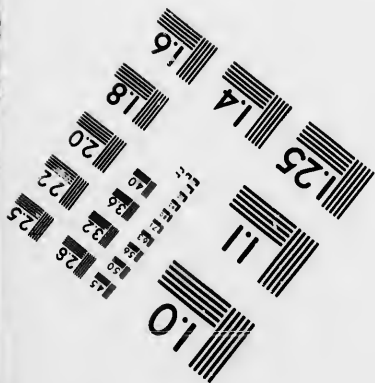
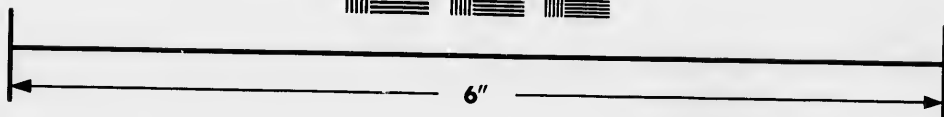
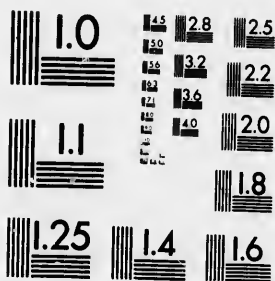


**IMAGE EVALUATION  
TEST TARGET (MT-3)**



**Photographic  
Sciences  
Corporation**

23 WEST MAIN STREET  
WEBSTER, N.Y. 14580  
(716) 872-4503

**CIHM  
Microfiche  
Series  
(Monographs)**

**ICMH  
Collection de  
microfiches  
(monographies)**



**Canadian Institute for Historical Microreproductions / Institut canadien de microreproductions historiques**

**© 1993**



The copy filmed here has been reproduced thanks to the generosity of:

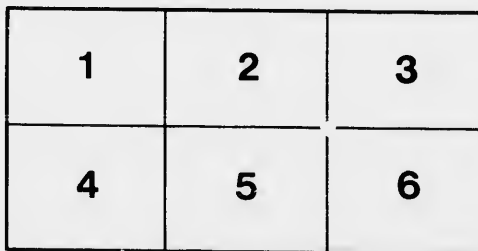
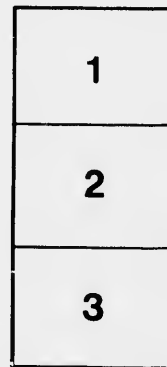
National Library of Canada

The images appearing here are the best quality possible considering the condition and legibility of the original copy and in keeping with the filming contract specifications.

Original copies in printed paper covers are filmed beginning with the front cover and ending on the last page with a printed or illustrated impression, or the back cover when appropriate. All other original copies are filmed beginning on the first page with a printed or illustrated impression, and ending on the last page with a printed or illustrated impression.

The last recorded frame on each microfiche shall contain the symbol  $\rightarrow$  (meaning "CONTINUED"), or the symbol  $\nabla$  (meaning "END"), whichever applies.

Maps, plates, charts, etc., may be filmed at different reduction ratios. Those too large to be entirely included in one exposure are filmed beginning in the upper left hand corner, left to right and top to bottom, as many frames as required. The following diagrams illustrate the method:



L'exemplaire filmé fut reproduit grâce à la générosité de:

Bibliothèque nationale du Canada

Les images suivantes ont été reproduites avec le plus grand soin, compte tenu de la condition et de la netteté de l'exemplaire filmé, et en conformité avec les conditions du contrat de filmage.

Les exemplaires originaux dont la couverture en papier est imprimée sont filmés en commençant par le premier plat et en terminant soit par la dernière page qui comporte une empreinte d'impression ou d'illustration, soit par le second plat, selon le cas. Tous les autres exemplaires originaux sont filmés en commençant par la première page qui comporte une empreinte d'impression ou d'illustration et en terminant par la dernière page qui comporte une telle empreinte.

Un des symboles suivants apparaîtra sur la dernière image de chaque microfiche, selon le cas: le symbole  $\rightarrow$  signifie "A SUIVRE", le symbole  $\nabla$  signifie "FIN".

Les cartes, planches, tableaux, etc., peuvent être filmés à des taux de réduction différents. Lorsque le document est trop grand pour être reproduit en un seul cliché, il est filmé à partir de l'angle supérieur gauche, de gauche à droite, et de haut en bas, en prenant le nombre d'images nécessaire. Les diagrammes suivants illustrent la méthode.



ST. ALBAN'S  
SCHOOL



BERTHIER



*"Esse quam videri."*

LE5

B46

S3

H

qu  
sit  
ba  
fi  
ai  
dr  
su  
co  
riv  
ier  
an  
fo  
fo  
ve  
me

Telegrams : "Boulden, Berthier," C.P.R.

Telephone Communication with Montreal,  
Ottawa, etc.

(If possible, speak from "Long Distance Office" in the city.)



# St. Alban's School

BERTHIER, Near Montreal

HEADMASTER:

THE REV. C. J. BOULDEN, M.A.

(Mathematical Honours) Trinity College,  
Cambridge, England; Prizeman of King's  
College, London; late Assistant-Master  
at Rossall School, England.

Berthier is a small and quiet town, charmingly situated on the north bank of the River St. Lawrence, fifty-two miles from Montreal. The air of Berthier is particularly clear, dry and invigorating, and during the summer months there is always a cool and refreshing breeze from the river. Official statistics place Berthier as an *exceptionally healthy town*; and the total immunity from any form of illness enjoyed by the School for seven consecutive years, affords very practical proof of this statement.

**Location of  
the School**

The C. P. R. has a convenient service of trains to Berthier; the journey from Montreal taking less than two hours. Parents wishing to visit the School, should leave Montreal at 9.00 a.m., and can reach the city again either at 3.30 p.m. or at 7.00 p.m. During the summer months, the steamer "Berthier" of the Richelieu and Ontario Company, makes two trips weekly from Montreal to Berthier.

**Means of  
Communication**

The school buildings are at a convenient and safe distance from the river, and have been constructed so as to receive a large amount of air and of sunshine. The school room and dining hall are particularly bright, airy and commodious. The majority of the bedrooms contain two or three beds each; there is one large dormitory, lofty and well ventilated; and there are also *separate bedrooms*, for which an extra charge is made.

**Situation and  
Description of  
School Premises**

The main building is of brick; and the additions have been constructed with the special view of ensuring a healthy degree of

**Heating and  
Warmth of  
the Building**



warmth. There are no "cold passages" to be found in the whole of the school buildings; the schoolroom has a specially constructed "double floor" to prevent draughts, and to guard against that fruitful source of illness—"cold feet." The premises are heated by hot water and by stoves.

The greatest attention is given to the satisfactory working of all plumbing and sanitary matters.

**Plumbing  
and  
Sanitation**

The entire system has been reconstructed since 1896, and has been laid down under the personal superintendence of the headmaster. Each floor has its bath-room with hot and cold water and complete sanitary arrangements.

Boys are prepared for matriculation at McGill and other Universities, for the Diocesan College in Montreal, for the entrance examinations at the Law and Medical Schools, the Royal Military College; also for the 'Public Schools' and Universities of England. Full attention is paid to elementary subjects in the lowest forms, and thoroughness is insisted upon in all subjects and throughout the school.

**Education**

The absolute necessity of French as a *special subject* in this Province is fully recognized, and most careful arrangements are followed out for the perfecting of French conversation. Latin is compulsory throughout the school.

A short service is held each morning and evening in the school chapel, and the headmaster gives instruction in the Bible and Prayer Book. The truest purpose of all education is taken to be the training of character; and the development of a true and manly tone is placed before the boys as the highest ideal that can be desired for St. Alban's. An important part in this development is played by the trust placed in boys by the masters, and returned in kind by the confidence and open bearing of the boys.

**Religious  
and  
Moral  
Training**

The Headmaster takes active part in the teaching of the school, and is therefore able to ensure perfect discipline during school hours. Every encouragement is given to manly games and sports; and members of the school staff join constantly with the boys in their out-of-school

**Discipline  
and  
Sports**

recreations. The supervision of the bedrooms is reserved as the special duty of the headmaster.

There is an excellent School Library, to which the boys have access at all times. Boys are not allowed to receive trashy and so-called "comic-papers"; the *least* that can be said against such literature, is that they glorify vulgarity.

**Library  
and  
Reading**

The river for some miles east and west of Berthier is narrow, safe, and free from strong currents. No boys are allowed in boats until they can swim; and no boys are allowed to bathe unless they are accompanied by the headmaster or by the senior assistant master.

**Boating  
and  
Bathing**

Physical drill, so important to growing boys, is kindly given by Lieut.-Col. Hanson.

**Physical  
Exercise**

The aim of the headmaster is to make St. Alban's a school of sound, manly, and true tone and character. The size of the school is altogether a matter of secondary consideration. Hence, great discretion is used in admitting new boys; those only being received, that it is honestly and

**Admittance**

thoroughly believed will bring credit to the school, and will maintain and not injure the prevailing tone and *morale*. The following are the rules regulating admittance :

1. New boys must not be under nine years of age, and must not have completed their fourteenth year.

2. No boy can be received who has been dismissed from any other school.

3. Every boy must be recommended to the headmaster by *one* of the following: (*a*) by the parent of some pupil at present in the school; (*b*) by a clergyman, or by the boy's former teacher ; or (*c*) by one of the gentlemen named at the end of this prospectus.

4. A form (supplied by the school authorities) must be filled in by the home medical adviser, referring to the general health and physical standing of a new boy.

The domestic arrangements are under the personal supervision of Mrs. Boulden, who will be glad to answer any questions regarding this part of the school. Mrs. Boulden and the headmaster take their meals with the boys.

**Domestic  
Arrangements  
and Meals**

The school year begins on the first Wednesday after the tenth of September, and closes on St. Alban's Day, June 17th. The vacations are from December 23rd to Jan. 10th, and from Easter Eve to the second Tuesday after Easter. Regular work in each term is begun on the day after the date named for re-assembling, and is continued up to, *and including*, the day of departure.

School  
Terms

**It is therefore most important that all boys should be sent back punctually, on the day named, and without exception; and on no account (except under most extraordinary circumstances) should application be made for any boy to return home before the date fixed for the general closing of the school.**

The Headmaster gives a most hearty invitation to parents and friends to visit the boys at the school as often as possible; such visits invariably do the boys good, help them to feel greater pride in their school, in their surroundings, and in their work. There is a good Boarding House in the town, where comfortable rooms can always be obtained; and an

Parents are asked to visit their boys at School in preference to having them home during term time.

invitation is extended to visitors to take all meals with the boys in the Dining Hall of the school. But the headmaster trusts that parents will not ask for their boys to go to their homes during the school year, except at the stated vacations, and at those times (of which due notice is sent to all parents) when arrangements are made for entertainments or for hockey and cricket matches in Montreal. Interruptions during term are a serious cause of trouble in schools; they greatly increase the danger of introducing epidemics; they invariably unsettle a boy for days and even for weeks; and produce in the school generally, an unsatisfactory and discontented feeling. Good holidays, should be followed up by good and *complete* terms of work.



Ta  
is  
fre  
qu  
po  
da  
  
an  
fit,  
a s  
ha  
a h  
of  
tro  
tin

visitors  
boys in  
But  
parents  
go to  
year,  
s, and  
notice  
ange-  
ments  
atches  
during  
ouble  
se the  
mics ;  
y for  
d pro-  
n un-  
eling.  
red up  
work.

- 7.20—First bell.
- 8.00—Breakfast. Time  
Table
- 9.00—12.10—Chapel, fol-  
lowed by school, with recess  
of ten minutes.
- 1.00—Dinner, followed by recrea-  
tion.
- 3.45—5.40—School. (Half-holi-  
days on Wednesdays and  
Saturdays).
- 6.00—Supper.
- 7.00—8.30—Chapel, followed by  
preparation work for next  
day.
- 8.40—Bed.

The special features of this Time Table are, that a full amount of time is allowed for sleep, and that the free period from twelve o'clock till a quarter to four, gives the boys opportunity of having good exercise daily in the open air.

Every boy should bring an ordinary personal out-  
fit, including a dressing gown, and a soiled linen bag. Every boy should have a black coat for best wear, and a hard felt hat; and if under the age of fourteen, an Eton suit (with grey trousers.) *All clothing should be distinctly marked.*

**Wardrobe**

It is advised that the headmaster be authorized to give a boy from ten to twenty-five cents a week according to age; and that each boy be encouraged to give a cent or two of this—(*his own money*, and not any special "collection money") to the church offertory.

**Pocket  
Money**

There are no admission or entrance fees, nor any extra charges for bedding, laundry or seat at church.

**Fees**

**Fees for boys under 12 years of age  
\$260 a year.**

**Fees for boys over 12 years of age  
\$300 a year.**

There are no extra charges whatever, except for pocket money, books and stationery (supplied at usual city prices) and tradesmen's accounts for repairs or for goods supplied.

The fees are payable quarterly in advance, and are due on September 10th, November 15th, February 15th and May 1st.



*From the Head Master of Rugby School, Eng. :*

The Rev. C. J. Boulden was the last Master whom I appointed to a place upon the staff of Rossall School during my Head-Mastership. I only remained there for about two months after he came, so that I cannot speak of his merits from long experience; but from what I saw during that time and heard, both from boys and Masters afterwards, the appointment was a most happy one for the School, and the loss great, when he removed from Rossall.

He is a good teacher; has his heart in his work, and (what is most important of all) displays a living interest in the boys who are brought in contact with him. Not a few Rossall boys I know, owed a good deal to his kindly interest and influence.

His mathematical ability is sufficiently attested by his honors at Cambridge, and his power of communicating his knowledge, by his success at Rossall.

It may not be out of place to add that his sermons are listened to with great interest by boys. They are plain, earnest and shew a true insight. I have heard much of them from many quarters.

Mr. Boulden possesses an even temper, a genial manner, and a common sense, which make him a good administrator.

(Sgd.) HERBERT A. JAMES, D.D.,

*Head Master of Rugby.*

*10th June, 1895.*

## REFERENCES



- THE REV. H. A. JAMES, D.D.,  
Head Master of Rugby School, Eng.
- THE RIGHT REVEREND THE LORD BISHOP OF DOVER,  
Canterbury, Eng.
- THE RIGHT REVEREND THE LORD BISHOP  
OF MONTREAL.
- THE RIGHT REVEREND THE LORD BISHOP  
OF TORONTO.
- THE RIGHT REVEREND THE LORD BISHOP  
OF NIAGARA.
- THE VERY REVEREND DEAN CARMICHAEL,  
of Montreal.
- THE VERY REV. DEAN NORMAN, of Quebec.
- THE VENERABLE ARCHDEACON EVANS, of Montreal.
- THE REV. H. KITSON, M.A.,  
of Montreal and Berthier.
- E. GOFF PENNY, ESQ., M.P., Montreal and Ottawa.
- DAVID DENNE, ESQ., Montreal.
- A. F. GAULT, ESQ., Montreal.

ol, Eng.

DOVER,  
ry, Eng.

NTREAL.

ORONTO.

IAGARA.

ontreal.

..

ontreal.

erthier.

Ottawa.

Printed by  
O. B. STANTON & Co.,  
Toronto, Ont.

