

**CIHM  
Microfiche  
Series  
(Monographs)**

**ICMH  
Collection de  
microfiches  
(monographies)**



**Canadian Institute for Historical Microreproductions / Institut canadien de microreproductions historiques**

**© 1995**

# Technical and Bibliographic Notes / Notes techniques et bibliographiques

The Institute has attempted to obtain the best original copy available for filming. Features of this copy which may be bibliographically unique, which may alter any of the images in the reproduction, or which may significantly change the usual method of filming, are checked below.

☒ Coloured covers/  
Couverture de couleur

☐ Covers damaged/  
Couverture endommagée

☐ Covers restored and/or laminated/  
Couverture restaurée et/ou pelliculée

☐ Cover title missing/  
Le titre de couverture manque

☐ Coloured maps/  
Cartes géographiques en couleur

☐ Coloured ink (i.e. other than blue or black)/  
Encre de couleur (i.e. autre que bleue ou noire)

☐ Coloured plates and/or illustrations/  
Planches et/ou illustrations en couleur

☐ Bound with other material/  
Relié avec d'autres documents

☐ Tight binding may cause shadows or distortion  
along interior margin/  
La reliure serrée peut causer de l'ombre ou de la  
distorsion le long de la marge intérieure

☐ Blank leaves added during restoration may appear  
within the text. Whenever possible, these have  
been omitted from filming/  
Il se peut que certaines pages blanches ajoutées  
lors d'une restauration apparaissent dans le texte,  
mais, lorsque cela était possible, ces pages n'ont  
pas été filmées.

☐ Additional comments: /  
Commentaires supplémentaires:

This item is filmed at the reduction ratio checked below/  
Ce document est filmé au taux de réduction indiqué ci-dessous.

10X	12X	14X	16X	18X	20X	22X	24X	26X	28X	30X	32X
<input type="checkbox"/>	<input type="checkbox"/>	<input type="checkbox"/>	<input type="checkbox"/>	<input type="checkbox"/>	<input type="checkbox"/>	<input checked="" type="checkbox"/>	<input type="checkbox"/>	<input type="checkbox"/>	<input type="checkbox"/>	<input type="checkbox"/>	<input type="checkbox"/>

L'Institut a microfilmé le meilleur exemplaire qu'il lui a été possible de se procurer. Les détails de cet exemplaire qui sont peut-être uniques du point de vue bibliographique, qui peuvent modifier une image reproduite, ou qui peuvent exiger une modification dans la méthode normale de filmage sont indiqués ci-dessous.

☐ Coloured pages/  
Pages de couleur

☐ Pages damaged/  
Pages endommagées

☐ Pages restored and/or laminated/  
Pages restaurées et/ou pelliculées

☒ Pages discoloured, stained or foxed/  
Pages décolorées, tachetées ou piquées

☐ Pages detached/  
Pages détachées

☒ Showthrough/  
Transparence

☒ Quality of print varies/  
Qualité inégale de l'impression

☐ Continuous pagination/  
Pagination continue

☐ Includes index(es)/  
Comprend un (des) index

Title on header taken from: /  
Le titre de l'en-tête provient:

☐ Title page of issue/  
Page de titre de la livraison

☐ Caption of issue/  
Titre de départ de la livraison

☐ Masthead/  
Générique (périodiques) de la livraison

The copy filmed here has been reproduced thanks to the generosity of:

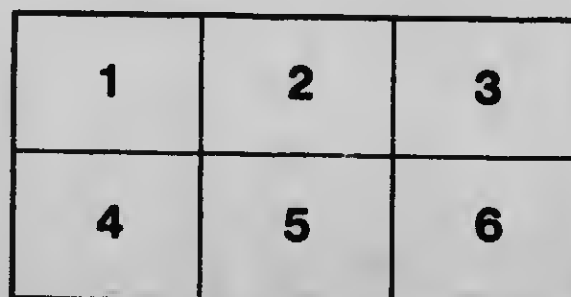
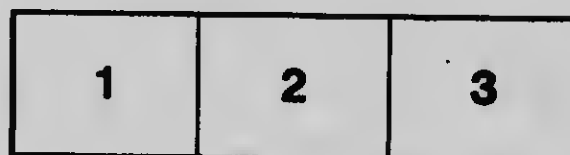
Bibliothèque nationale du Québec

The images appearing here are the best quality possible considering the condition and legibility of the original copy and in keeping with the filming contract specifications.

Original copies in printed paper covers are filmed beginning with the front cover and ending on the last page with a printed or illustrated impression, or the back cover when appropriate. All other original copies are filmed beginning on the first page with a printed or illustrated impression, and ending on the last page with a printed or illustrated impression.

The last recorded frame on each microfiche sheet contains the symbol  $\rightarrow$  (meaning "CONTINUED"), or the symbol  $\nabla$  (meaning "END"), whichever applies.

Maps, plates, charts, etc., may be filmed at different reduction ratios. Those too large to be entirely included in one exposure are filmed beginning in the upper left hand corner, left to right and top to bottom, as many frames as required. The following diagrams illustrate the method:



L'exemplaire filmé fut reproduit grâce à la générosité de:

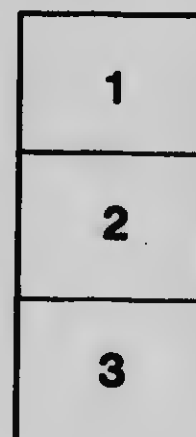
Bibliothèque nationale du Québec

Les images suivantes ont été reproduites avec le plus grand soin, compte tenu de la condition et de la netteté de l'exemplaire filmé, et en conformité avec les conditions du contrat de filmage.

Les exemplaires originaux dont la couverture en papier est imprimée sont filmés en commençant par le premier plat et en terminant soit par la dernière page qui comporte une empreinte d'impression ou d'illustration, soit par le second plat, selon le cas. Tous les autres exemplaires originaux sont filmés en commençant par la première page qui comporte une empreinte d'impression ou d'illustration et en terminant par la dernière page qui comporte une telle empreinte.

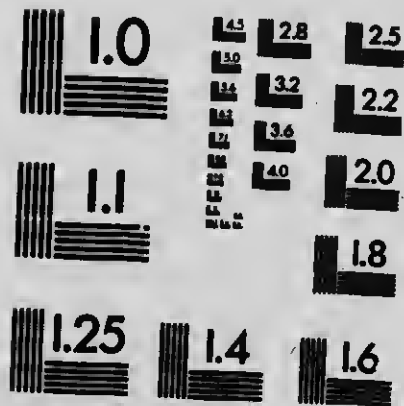
Un des symboles suivants apparaîtra sur la dernière image de chaque microfiche, selon le cas: le symbole  $\rightarrow$  signifie "A SUIVRE", le symbole  $\nabla$  signifie "FIN".

Les cartes, planches, tableaux, etc., peuvent être filmés à des taux de réduction différents. Lorsque le document est trop grand pour être reproduit en un seul cliché, il est filmé à partir de l'angle supérieur gauche, de gauche à droite, et de haut en bas, en prenant le nombre d'images nécessaire. Les diagrammes suivants illustrent la méthode.



# MICROCOPY RESOLUTION TEST CHART

(ANSI and ISO TEST CHART No. 2)



**APPLIED IMAGE Inc**

1653 East Main Street  
Rochester, New York 14609 USA  
(716) 482-0300 - Phone  
(716) 288-5989 - Fax



# NOTRE DAME LADIES' COLLEGE

AFFILIATED TO LAVAL UNIVERSITY

Department of Social Service and Study  
in co-operation with  
THE LOYOLA SCHOOL OF SOCIOLOGY.

1918



1919

Inauguration, October first,  
under the special patronage of  
The Most Reverend Paul Bruchési,  
Archbishop of Montreal.

1811  
1812

THE  
LIBRARY OF THE  
MUSEUM OF  
ART AND HISTORY  
OF THE  
CITY OF  
NEW YORK

## CALENDAR

For the Year

**1918**

Sept. 25, Wednesday .....	Registration begins
Oct. 1, Tuesday .....	Formal opening
Oct. 3, Thursday .....	First term begins
Nov. 1, Friday .....	Feast of All Saints
Dec. 21, Friday .....	Christmas Holidays begin

**1919**

Jan. 10, Friday .....	Classes resumed
Jan. 21 to 24 .....	Mid-year examinations
Jan. 27, Monday .....	Second term begins
April 17 to 23 .....	Easter Holidays
April 23, Wednesday .....	Classes resumed
May 5 to 8 .....	Examinations







MOTHER HOUSE OF THE CONGREGATION DE NOTRE-DAME  
1010, SHERBROOKE STREET, WEST.  
The College occupies one of the wings.

Notre Dame Ladies' College, the first school opened in the Province of Quebec for the Higher Education of Catholic young women, was founded in 1908, by the Sisters of the Congrégation de Notre-Dame de Montreal.

The College offers instruction in two distinct Sections: The French Section and the English Section — each having its own staff of Lecturers and Instructors. In virtue of the affiliation with Laval University, its students, when duly qualified, are awarded Baccalaureate degrees in Letters, Science, and Arts, by the Faculty of the University.

The College now offers opportunities to train Social Workers along the lines approved by Catholic Schools of Sociology. The new course of Social Service and Study supplies one of the most urgent needs of the day.

AUSPICE MARIA  
CRESCAT SCIENTIA  
REGNET FIDES

## DEPARTMENT OF SOCIAL SERVICE

### BOARD OF DIRECTORS

---

RIGHT REV. GEORGE GAUTHIER, Auxiliary Bishop of Montreal; Vice Rector, Laval University.

Rev. EMILE CHARTIER, General Secretary, Laval University.

Rev. W. H. HINGSTON, S. J., Rector, Loyola College; Dean of the School of Sociology; Moderator Catholic Social Service Guild.

The PRESIDENT of Notre Dame Ladies' College.

THE DEAN of the Faculty of Notre Dame Ladies' College.

### Teaching Staff

REV. JOHN C. BROPHY, D. D., Ethical Principles of Social Activities.

REV. L. V. BROUGHALL, C.S.C., *Professor of Latin and English, St-Laurent College*, English: Theme-Writing, Oral practice.

MISS L. E. F. BARRY, *Honorary Secretary, Catholic Social Service Guild*, Field Work: Case Work, Institutions, Agencies.

REV. FATHER ETHELBERT, O.F.M., Social and Economic History.

MADAME D'EMARESE-BOURGET, Italian.

MLLE GERMAINE GRÉTERIN, *Agrégé ès lettres de l'université de France*, French Literature.

REV. W. H. HINGSTON, S. J., *Dean of the School of Sociology, Social Economics*.

REV. HENRI JASMIN, Ph.D., S.T.D., S.S.L., Spanish.

E. J. MULLALY, M.D., Health Problems.

REV. MARTIN P. REID, *Inspector of English Schools,*  
*The Modern Novel.*

With Sisters of the Congrégation de Notre Dame in  
the Departments of Religion, Logic, English Literature,  
German, and Domestic Science.

#### Special Lecturers

WILLIAM H. ATHERTON, Ph.D.; Litt. D., LL.D., *Secretary*  
*City Improvement League.*

REV. PAUL L. BLAKELY, S.J., *Associate Editor of*  
*"America".*

REV. JOHN E. DONNELLY, P. P., *St. Anthony's, Montreal.*

RUPERT H. DEROME, M. D., *Surgeon, Children's Memorial*  
*Hospital.*

G. E. DEVLIN, M. D., *Medical superintendent, St. Jean*  
*de Dieu Hospital.*

VERY REV. J. MILWAY FILION, S.J., *Provincial Superior.*

REV. MATTHEW L. FORTIER, S.J., *Dean of the Fordham*  
*University School of Sociology.*

HON. EDMUND GUERIN, *Judge of the Superior Court.*

HON. JAS. J. GUERIN, M.D., K.C.St.G.

REV. THOMAS HEFFERNAN, P.P., *St. Thomas Aquinas'*  
*Montreal.*

DONALD A. HINGSTON, M.D., F.R.C.S., (Edin.), *Vocational*  
*Medical Officer M. D. 4 and 5 Invalided Soldiers'*  
*Commission.*

REV. JOSEPH HUSSLEIN, S.J., *Associate Editor of*  
*"America", Lecturer on Social History, Fordham*  
*University.*

REV. THOMAS KEARNEY, C. S. C., *Professor of Latin and English, St. Laurent College.*

REV. GERALD J. McSHANE, S.S., D.D.

EDOUARD MONTPETIT, *Docteur en Droit, Diplômé de l'Ecole des Sciences politiques à Paris, Professor Laval University.*

HECTOR PALARDY, M.D., P.H.D. *Public Sanitary Inspector.*

M. A. PHELAN, K.C.

REV. M. J. SCANLON, *Director Catholic Charitable Bureau, Boston.*

HENRY SOMERVILLE, M.A., *Diplômé in Economics and Political Science of Oxford University, Lecturer in Sociology, St. Francis Xavier's University.*

W. A. STYLES, M.D., *Secretary of Child-Welfare Stations.*

JAS. J. WALSH, M.D., Ph.D., Litt.D., LL.D.

---

## GENERAL INFORMATION

Sociology, as it deals with the various complex problems of social life and the laws governing all social betterment, must include the study of Economics, the History of Social Development (abuses and reforms), Civics, Hygiene, Ethics (General and Applied), other allied Sciences.

The Course will suit two distinct classes of students. Some may wish to attend one or more series of lectures for self-improvement, or the better to fit themselves for the higher form of voluntary social service. Others will work for a Certificate or Diploma which shall admit them to useful and lucrative employments.

### Study Sessions

The Academic Year is divided into two terms; the first

opens on October 3rd, the second, on January 27th.

Besides the regular classes and lectures, there will be a Course of Special Lectures on social topics, by Professors eminent in the respective branches. A considerable amount of time will be given to Field Work and Investigation.

### **Certificates and Diplomas**

A Diploma from the Faculty of Arts, Laval University, Montreal, will be awarded to students who have followed the two years' course. A Certificate will be given for one year's full work.

### **Admission of Students**

Students will be admitted who can show a High School Leaving Certificate or equivalent.

College graduates will be dispensed from certain courses.

General training and practical experience will also be recognized.

In case acceptable certificates are not presented, candidates will be examined on the following subjects:

ENGLISH: Grammar, Composition, Leading English Writers.

HISTORY, English and Canadian.

PRACTICAL ARITHMETIC.

FRENCH OR LATIN: An adequate knowledge of Grammar, translation of easy prose.

To secure a pass, a candidate must make a general average of 65% with not less than 50% in English nor less than 35% in any other subject.

Satisfactory references as to moral character and industry as students will be required.



### Advantages

Students of Sociology at Notre Dame Ladies' College may also attend the usual lectures of the Arts Course and of the Commercial and Domestic Science sections. The Department of Modern Languages offers special opportunities to social workers. French is included in the regular course; arrangements may be made for tuition in Spanish, Italian, and German.

Students may also attend the Evening Classes and Lectures held at the St. Sulpice Library, 340 St. Denis Street, under the auspices of the LOYOLA SCHOOL OF SOCIOLOGY.

### Scholarships

Grants or gifts to endow full or partial scholarships for the benefit of deserving students of limited means are respectfully solicited by the Faculty. Such endowments would be an efficient means of co-operating with this important work undertaken solely from humanitarian and charitable motives.

### Yearly Expenses

Matriculation fee	\$ 5 00
Tuition to regular students (payable half-yearly)	50 00
Attendance at the regular lectures as hearers	5 00
Tuition in any one subject	10 00
Board and residence, per month	40 00

### Registration

Students may register at the Notre Dame Ladies' College, 1010 Sherbrooke Street, W., or at the Catholic Social Service Guild, 316 Lagauchetière Street, W., from September 25th to October 15th.

The Faculty reserves the privilege of cancelling any course which has not secured the required number of students.

## OUTLINE OF STUDIES

---

### **Social Economics**

Wealth and Value. The factors in producing wealth: land, capital, labor, ability. The distribution of wealth as rent, interest, wages, and profits. Justice in distribution. Relations between employers, workers, and the community in general. Protection of the workers by labor organizations and legislation. State action for social objects: taxation, tariffs, public ownership of utilities, etc. Socialism. Voluntary co-operation among producers and consumers. The art of consumption. Lines of social advance.

### **Ethics — General and Special**

Man, his origin and destiny. Intrinsic and extrinsic principles of morality. False standards. Natural law: existence, source, conclusions. Civil law, obligations and sanction. Rights and duties. Worship. Ownership of property. Communism and Socialism: basic tenets and refutation. Strikes and Lockouts. Contracts. Homicide. Duelling. Lying. Social relations: Family; Civil Society (authority, origin, necessity, power). International Law. War. Education, respective duties of parents and State. Universal suffrage. Freedom of worship. Freedom of the Press. Social vices and virtues.

## **Social and Economic History**

Early stages of society. The Patriarchal stage. Social aspects of the Mosaic Law. The slave system of Greece and Rome. Influence of Christianity in early times. The evolution of the Feudal System, Serfdom. Social action of the Church in the Middle Ages. Provision for the various forms of distress. The monasteries and land development. The Guilds. Destruction of the mediæval system. Social effects of the Reformation in the 16th century. The Industrial Revolution. The rise of modern capitalism. Reform movement. Trade unions. Labor legislation. Socialism. Co-operation.

## **Apologetics**

Existence of God, metaphysical, physical and moral proofs. God in His essence and attributes. Concurrence of God in the free acts of man. Divine Providence in relation to physical and moral evils. Miracles. Divinity of the Christian religion. The Church, marks, prerogatives; relations between Church and State. Liberalism. Intolerance. Great Catholic laymen. Answers to common objections.

## **Hygiene**

Elementary Anatomy, Physiology. Hygiene for social workers. Hygiene of the individual: references to food and clothing, water, air, milk, etc. Diseases of youth and age. Hygiene of the Community: Sanitation of buildings, Disposal of refuse; Schools, care of children; Infectious and Contagious Diseases. Occupational Diseases. Hospitals.

Drug Habits, etc. Preventative Medicine. Municipal, Provincial, Federal Health Organization.

### **English**

This course will enable the pupil to get a thorough grasp of the principles of English composition. Frequent practice under personal supervision will meet the needs of individual students. The subject matter treated will include narrative and descriptive essays, short stories, critical analysis of selected prose and poems from modern masters, speeches, drawing up of reports.

### **French**

A thorough study of French Grammar. Reading and interpretation of selected texts. Conversation. Prose Composition.

Advanced students may follow the lectures on Authors of the Seventeenth Century, Lyric Poetry, Christian and Decorative Art.

A special course is planned for English-speaking students who wish to prepare for the Diploma in French Literature granted by Laval University.

### **Domestic Science**

This Course will consist of lectures and demonstrations on dietetics and cookery under war-conditions. Special stress will be laid on Nutritive Values.

### **Field Work and Investigation**

This is the most important part of the Course for stu-

dents who desire the Certificate for Trained Social Service. Montreal offers exceptional advantages for the study of all classes of relief work through a multiplicity of voluntary, private, public, religious, or undenominational agencies and organizations. This Course is entirely of a practical nature and includes both Office work and Investigation. It comprises office management, correspondence, classification, compiling of statistics, the preparing of records and reports, etc.

Visits to charitable and philanthropic institutions are made to study the various methods in use, under experienced guidance. A considerable time is also given to graded case-work so as to familiarize the student with the various existing organizations that may be applied to for relief, and the proper procedure in dealing with each.

This Practice work is under the immediate supervision and control of the Catholic Social Service Guild which affords unique advantages for case-work in Montreal.

**MONDAY****TUESDAY****WEDNESDAY****THURSDAY****FRIDAY****SATURDAY**

**\* SPECIAL**

Field Work days and hours to be arranged with the Supervisor.

" We have no intellectual right to be ignorant when information lies at hand, and we have no spiritual right to be weary when great moral issues are at stake."





