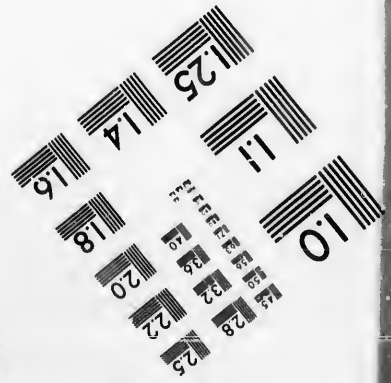
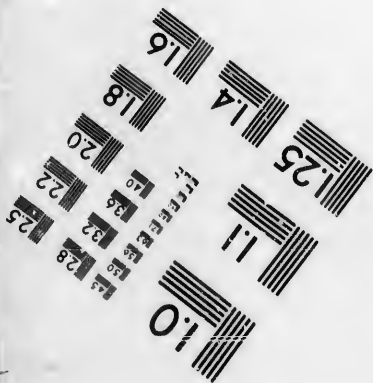
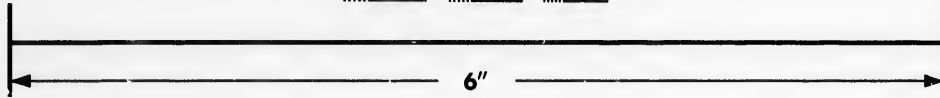
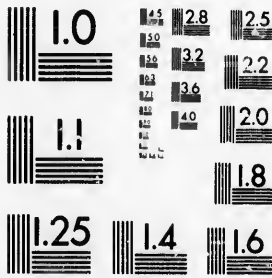


**IMAGE EVALUATION
TEST TARGET (MT-3)**



**Photographic
Sciences
Corporation**

23 WEST MAIN STREET
WERSTER, N.Y. 14580
(716) 872-4503

**CIHM/ICMH
Microfiche
Series.**

**CIHM/ICMH
Collection de
microfiches.**



Canadian Institute for Historical Microreproductions / Institut canadien de microreproductions historiques

© 1987

Technical and Bibliographic Notes/Notes techniques et bibliographiques

The Institute has attempted to obtain the best original copy available for filming. Features of this copy which may be bibliographically unique, which may alter any of the images in the reproduction, or which may significantly change the usual method of filming, are checked below.

L'Institut a microfilmé le meilleur exemplaire qu'il lui a été possible de se procurer. Les détails de cet exemplaire qui sont peut-être uniques du point de vue bibliographique, qui peuvent modifier une image reproduite, ou qui peuvent exiger une modification dans la méthode normale de filmage sont indiqués ci-dessous.

- Coloured covers/
Couverture de couleur
- Covers damaged/
Couverture endommagée
- Covers restored and/or laminated/
Couverture restaurée et/ou pelliculée
- Cover title missing/
Le titre de couverture manque
- Coloured maps/
Cartes géographiques en couleur
- Coloured ink (i.e. other than blue or black)/
Encre de couleur (i.e. autre que bleue ou noire)
- Coloured plates and/or illustrations/
Planches et/ou illustrations en couleur
- Bound with other material/
Relié avec d'autres documents
- Tight binding may cause shadows or distortion along interior margin/
La reliure serrée peut causer de l'ombre ou de la distorsion le long de la marge intérieure
- Blank leaves added during restoration may appear within the text. Whenever possible, these have been omitted from filming/
Il se peut que certaines pages blanches ajoutées lors d'une restauration apparaissent dans le texte, mais, lorsque cela était possible, ces pages n'ont pas été filmées.
- Additional comments:/
Commentaires supplémentaires:

- Coloured pages/
Pages de couleur
- Pages damaged/
Pages endommagées
- Pages restored and/or laminated/
Pages restaurées et/ou pelliculées
- Pages discoloured, stained or foxed/
Pages décolorées, tachetées ou piquées
- Pages detached/
Pages détachées
- Showthrough/
Transparence
- Quality of print varies/
Qualité inégale de l'impression
- Includes supplementary material/
Comprend du matériel supplémentaire
- Only edition available/
Seule édition disponible
- Pages wholly or partially obscured by errata slips, tissues, etc., have been refilmed to ensure the best possible image/
Les pages totalement ou partiellement obscurcies par un feuillet d'errata, une pelure, etc., ont été filmées à nouveau de façon à obtenir la meilleure image possible.

This item is filmed at the reduction ratio checked below/
Ce document est filmé au taux de réduction indiqué ci-dessous.

10X	12X	14X	16X	18X	20X	22X	24X	26X	28X	30X	32X
						✓					

The copy filmed here has been reproduced thanks to the generosity of:

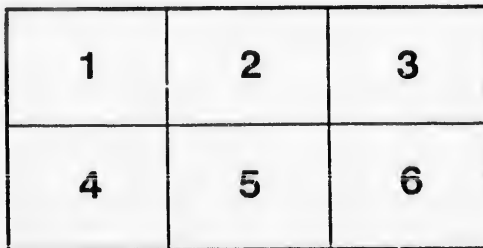
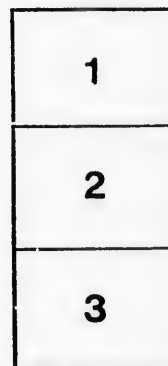
Metropolitan Toronto Library
Canadian History Department

The images appearing here are the best quality possible considering the condition and legibility of the original copy and in keeping with the filming contract specifications.

Original copies in printed paper covers are filmed beginning with the front cover and ending on the last page with a printed or illustrated impression, or the back cover when appropriate. All other original copies are filmed beginning on the first page with a printed or illustrated impression, and ending on the last page with a printed or illustrated impression.

The last recorded frame on each microfiche shall contain the symbol \rightarrow (meaning "CONTINUED"), or the symbol ∇ (meaning "END"), whichever applies.

Maps, plates, charts, etc., may be filmed at different reduction ratios. Those too large to be entirely included in one exposure are filmed beginning in the upper left hand corner, left to right and top to bottom, as many frames as required. The following diagrams illustrate the method:



L'exemplaire filmé fut reproduit grâce à la générosité de:

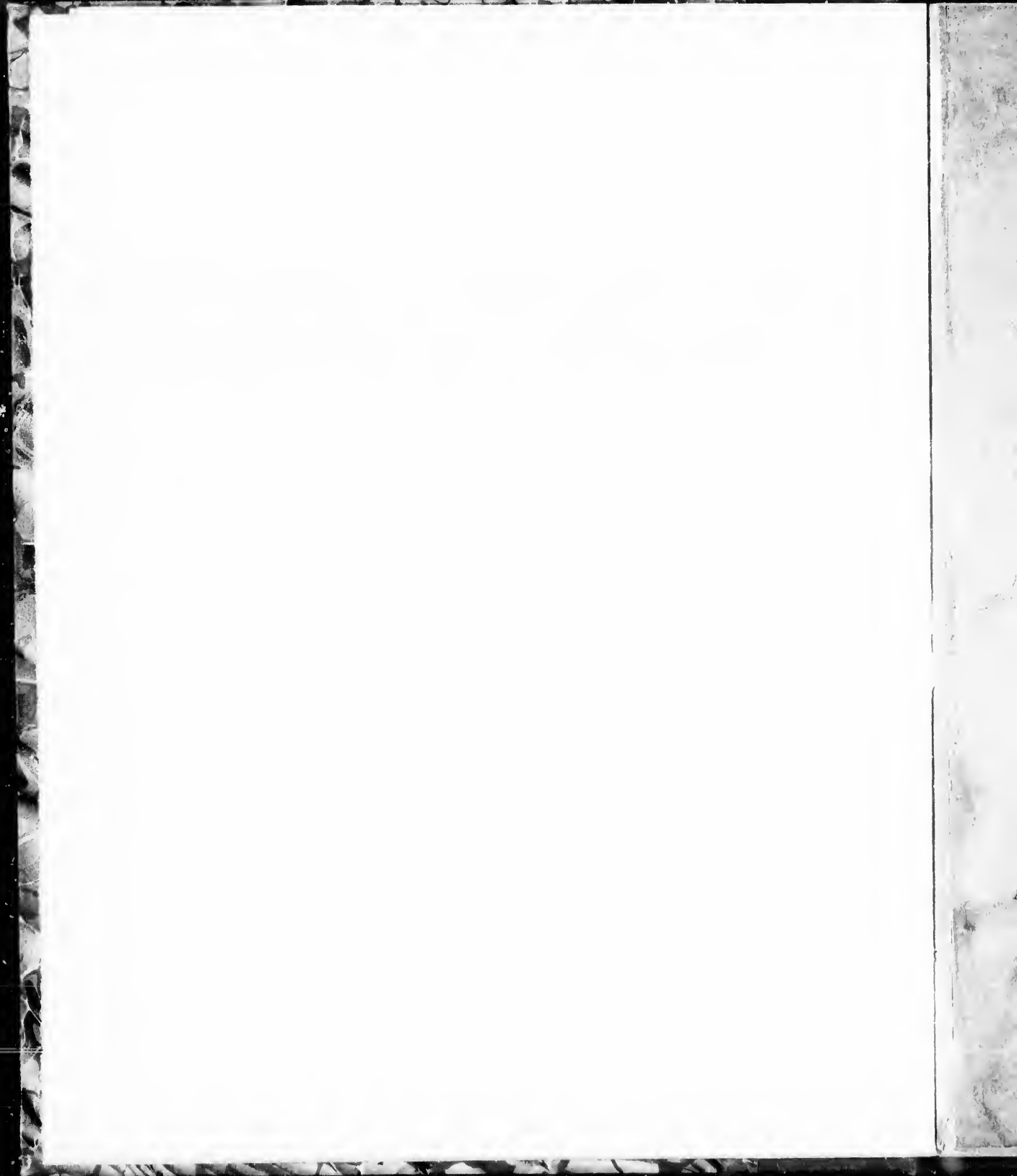
Metropolitan Toronto Library
Canadian History Department

Les images suivantes ont été reproduites avec le plus grand soin, compte tenu de la condition et de la netteté de l'exemplaire filmé, et en conformité avec les conditions du contrat de filmage.

Les exemplaires originaux dont la couverture en papier est imprimée sont filmés en commençant par le premier plat et en terminant soit par la dernière page qui comporte une empreinte d'impression ou d'illustration, soit par le second plat, selon le cas. Tous les autres exemplaires originaux sont filmés en commençant par la première page qui comporte une empreinte d'impression ou d'illustration et en terminant par la dernière page qui comporte une telle empreinte.

Un des symboles suivants apparaîtra sur la dernière image de chaque microfiche, selon le cas: le symbole \rightarrow signifie "A SUIVRE", le symbole ∇ signifie "FIN".

Les cartes, planches, tableaux, etc., peuvent être filmés à des taux de réduction différents. Lorsque le document est trop grand pour être reproduit en un seul cliché, il est filmé à partir de l'angle supérieur gauche, de gauche à droite, et de haut en bas, en prenant le nombre d'images nécessaire. Les diagrammes suivants illustrent la méthode.



Pushed
C. 20
K 1
3763

TORONTO
SOCIETY OF ARTS:

FIRST EXHIBITION,

1847.



OPEN FROM NINE O'CLOCK IN THE MORNING UNTIL DUSK.

Admittance for each Person, One Shilling and Threepence ; Season Tickets, during the Exhibition, Three Shillings and NINEPENCE ; Children under twelve years of age, Half price. Catalogues Sevenpence halfpenny each.

VIVAT REGINA.

901375



SEP 27 1932

NOTICES.

A person will attend in the Gallery with a book, containing the prices of such pictures as are for sale, with whom Purchasers are requested to leave their names and address, together with a deposit of twenty per cent. on the value of each purchase; the remainder of the purchase money to be paid at or before the close of the Exhibition.

To prevent mistakes, no picture will be marked sold unless the deposit be made.

The Pictures are to be removed at the expense of the Purchaser, but no Picture to be removed before the close of the Exhibition.

No person will be admitted into the room with an umbrella, parasol or walking-stick. A person is appointed to receive them at the door. Attendants are placed in the rooms, to prevent any one from touching the Pictures.

No person to be admitted without a check.

TORONTO SOCIETY OF ARTS, 1847.

It is wished to be observed, that in the formation of this Society the object of the Founders has been to give greater means and facilities for the study of the Fine Arts, being convinced how highly their cultivation will contribute to the reputation, character and dignity, of the Province, more particularly as they are so intimately associated with the progress of science, literature, and philosophy.

It is proposed to obtain from Europe a collection of casts of the finest remaining sculptures of antiquity, together with the choicest existing specimens of classical composition in foliage, with a series of other gems of antiquarian research, to form an effective school for the study of the human figure, and to promote the cultivation of pure taste in the various applications of design.

In order to the carrying out in an effectual manner this great object, the support of a generous public is indispensable, and the Society feel satisfied from the general character and high discrimination of many of our worthy citizens, that they will justly appreciate the motives that dictated the formation of the Society.

PATRONS.

His Excellency the Right Hon. EARL OF
ELGIN AND KINCARDINE, Governor
General of British North America.
The Hon. and Right Rev. JOHN STRACHAN,
D. D., Lord Bishop of Toronto.
The Right Rev. MICHAEL POWER, Roman
Catholic Bishop of Toronto.

The Hon. J. B. ROBINSON, Chief Justice.
The Rev. JOHN McCAY, L. L. D., Vice
President University of King's College,
Toronto.
The Hon. R. S. JAMESON, Vice Chancellor.
W. H. BOULTON, Esq., M.P.P., Mayor of
Toronto.

OFFICERS

OF THE

TORONTO SOCIETY OF ARTS.

FOR THE YEAR 1847.

PRESIDENT.

WILLIAM THOMAS, Esquire.

VICE PRESIDENT.

JOHN G. HOWARD, Esquire.

COMMITTEE.

THOMAS YOUNG,	EDWARD MCGREGOR,
PETER MARCH,	THOMAS H. STEVENSON.

TREASURER.

JOHN G. HOWARD.

SECRETARY.

E. C. BULL.

MEMBERS.

HOPPNER MEYER,	F. C. LOWE,
C. HYDE,	SAMUEL LEES,
JOHN CRAIG,	JACOB HAUER,
THOMAS WHEELER,	KIVAS TULLY.

RULES OF THE SOCIETY.

- I. The Society to be designated THE TORONTO SOCIETY OF ARTS.
- II. The President, Vice President, Managing Committee, Treasurer and Secretary, to be elected annually, on the 25th January.
- III. No person but Professional Artists to hold any office in the Society.
- IV. An Annual Exhibition of Paintings, Drawings, Sculpture, Modelling and other Works of Arts, to take place at such time as may be determined on. Persons exhibiting one Specimen, with their own name attached, to be entitled to free admission to the Exhibition.
- V. Members to be entitled to vote in committee for the general objects of the Society, and to have free admission to the Exhibitions.
- VI. Associate and Honorary Members to have free access to the meetings of the Society, but not entitled to vote or hold office.
- VII. Members to be elected by ballot, after being proposed at the preceding meeting of the Society.
- VIII. Donors of Ten Pounds, currency, to be members of a general committee, by virtue of their donation.
- IX. Subscribers of One Pound, currency, per annum, to have the right, if otherwise qualified, of studying personally in the Academy, or of recommending for that purpose any member of his own family, or one stranger; and has also free admission to the Exhibitions, and is entitled to two transferable tickets for Ladies, whose names shall be written thereon.



THE CATALOGUE.

The Pictures are numbered as they are placed in the Room—the first number over the Door.

GREAT CENTRE ROOM.

1. Lot and his Daughters, (copy) - - - *John Craig.*
2. View in the Bay of Fundy, (copy), for sale - *Stevenson.*
3. Portrait of a Gentleman, - - - *E. McGregor.*
4. Portrait - - - - - *Bradish.*
Portrait of the Hon. Mr. Justice Jones.)
5. St. Peter, (copy) after Spagnoletti, - - *Peter March.*
(The Property of Mr. Charles March.)
6. Portrait of a Lady, - - - - *Peter March.*
7. The Confession, (copy) - - - - *Kreighoff.*
8. View on the Lake shore near Toronto, - - - *Gillespie.*
9. Cape Blow-me-down, (copy), for sale *Stevenson & McGregor.*
10. Portrait of a Gentleman - - - - *E. McGregor.*
11. Portrait of a Lady, - - - - *Bradish.*
12. St. Paul, (copy) after Spagnoletti, - - *Peter March.*
(The Property of Mr. Charles March.)
13. Portrait of W. Thomas, Esquire, Architect, President of
the Toronto Society of Arts, - - - *F. Rosenberg.*
14. Working a Canoe up a Rapid, (copy), for sale *T. H. Stevenson.*
15. View near Bytown, (copy) - - - *T. H. Stevenson.*
16. The Returned Love-Letter, - - - - *Gilbert.*
17. Portrait of a Gentleman, - - - - *Bowman.*
18. Full-length Portrait of a Child, (unfinished) - *Peter March.*
19. Portrait of a Lady, - - - - *Peter March.*
20. Portrait of a Gentleman, - - - - *Peter March.*
21. View of Niagara Falls, (copy) - *McGregor & Stevenson.*
22. Portrait of a Lady, - - - - *Peter March.*
23. Timber Slide, (copy), for sale - *Stevenson & McGregor.*
24. Portrait of a Mother and Child, - - - *Paul Kane.*
25. Rembrandt's Daughter, (copy), after Rembrandt *Peter March.*
(The property of Mr. Charles March.)
26. Portrait of a Gentleman, - - - - *Peter March.*

27. Scene in the Bush, for sale - - - - *E. McGregor.*
 28. Portrait of a Gentleman, - - - - *E. McGregor.*
 29. Scene in the North-West,—Portrait, - - - *Paul Kane.*
 30. The Wrecker's Daughter - - - - *Peter March.*
 31. Portrait of Rubens, (copy), after Rubens - - - *Peter March.*
 (The Property of Mr. Charles March.)
 32. The Stray Kitten, (copy), for sale *Stevenson & McGregor.*
 33. Log Cabin, (copy), for sale - - - *Stevenson & McGregor.*
 34. Portrait of a Lady - - - - *E. McGregor.*
 35. Dog and Game, (copy) - - - - *T. H. Stevenson.*
 36. Portrait of a Lady - - - - *E. McGregor.*
 37. Landscape - - - - *James Hamilton.*
 38. Portrait of a Gentleman, (copy) - - - *Peter March.*
 39. Portrait of Alderman Gurnett, Toronto - - *Paul Kane.*
 40. Portrait of a Gentleman - - - - *Peter March.*
 41. The Squaw's Grave, (copy), for sale - *Stevenson & McGregor.*
 42. Portr. H. Boulton, Esq., M. P. P., Mayor of the
 City of London - - - - *Berthon.*
 43. Kent. - - - - *Stevenson & McGregor.*
 44. Portra. (copy), after Vandyke - *Peter March.*
 (The property of Mr. Charles March.)
 45. The Velvet Hat, for sale - - - *E. McGregor.*
 46. Portrait of the Rev. J. McCaul, LL.D., Vice-President of
 the University of King's College, Toronto *Peter March.*
 47. Portrait of a Highlander in Costume - - - *Peter March.*
 48. Portrait of a Gentleman - - - - *G. T. Berthon.*
 49. Portrait of a Gentleman - - - - *Peter March.*
 50. Portrait of a Gentleman - - - - *Peter March.*
 51. Portrait of a Lady - - - - *Peter March.*
 52. Portrait of a Lady - - - - *Peter March.*
 53. A Study - - - - *Peter March.*
 (The Property of Mr. Charles March.)
 54. Indian Maid, (copy), for sale - - - *E. McGregor.*
 55. Portrait of a Lady - - - - *Peter March.*
 56. Portrait of a Gentleman - - - - *E. McGregor.*
 57. Portrait of a Gentleman - - - - *Peter March.*
 58. Portrait of a Lady - - - - *E. McGregor.*
 59. Portrait of a Gentleman - - - - *Kreighoff.*
 60. Landscape - - - - *James Hamilton.*
 61. The Gentleman and Beggar - - - - *Kreighoff.*
 62. The Maid of Athens - - - - *An Amateur.*

63. Fort Chambly, (copy), for sale - - - *J. H. Stevenson.*
64. Portrait of a Gentleman - - - *Gilbert.*
65. Portrait of a Gentleman - - - *Gilbert.*
66. Navy Island, (copy) - - - *Stevenson & Mc Gregor.*
67. View in Scotland, (copy) - - - *J. H. Stevenson.*
68. Going to Market, (copy), for sale - - *Stevenson & Mc Gregor.*
69. Mare and Foal, (copy) - - - *E. C. Bull.*
70. The Vale of Chalford, from Skait's Hill, Gloucestershire,
England, painted on the spot, by - *Robert Thomas.*
(The Property of W. Thomas, Esq.)
71. Forest Scene, (copy) - - - *Stevenson & Mc Gregor.*
72. Coast Scene, (copy) - - - *E. Mc Gregor.*
73. Shipwreck, (copy) - - - *E. Mc Gregor.*
74. Cattle Crossing a Bridge, for sale *Stevenson & Mc Gregor.*
75. View of the Ottawa, (copy) - - - *E. C. Bull.*
76. Donnington Castle, Berkshire, England - *Robert Thomas.*
(The Property of W. Thomas, Esq.)
77. Portrait of a Gentleman - - - *E. Mc Gregor.*
78. Portrait of a Gentleman - - - *Peter March.*
79. Portrait of a Gentleman - - - *Peter March.*
80. A Day's Sport in the Highlands, (copy) *T. H. Stevenson.*
81. Wellington, on Lake Ontario, for sale *McGregor & Stevenson.*
82. First Settlement, (copy) - - - *Stevenson & Mc Gregor.*
83. The Vale of Stroudwater, &c, from Selsby Hill, Gloucester-
shire, England, painted on the spot by - *Robert Thomas.*
(The Property of W. Thomas, Esq.)
84. A Storm. The Fisherman's Wife watching the return of
her Husband; she is just turning from the beach in des-
pair, when, by the aid of a flash of lightning, the boy
descries the boat coming round a rock, by *E. Mc Gregor.*
85. Copy of a Head, after Vandyke - - - *Peter March.*
86. Portrait of a Lady - - - *G. F. Berthon.*
87. Portrait of a Gentleman - - - *S. B. Waugh.*
88. Indian Summer at Lake Superior - - - *Paul Kane.*
89. Returning to Port - - - *W. A. Parks.*
(The Property of W. Thomas, Esq.)
90. Sea Piece - - - *Vandervelde.*
91. The Glade Cottage, (copy), for sale - - *E. Mc Gregor.*
92. Portrait of a Gentleman - - - *E. Mc Gregor.*
93. Cabinet Portrait - - - *E. Mc Gregor.*

- evenson.
 Gilbert.
 Gilbert.
 e Gregor.
 Stevenson.
 e Gregor.
 C. Bull.
 Thomas.
 e Gregor.
 e Gregor.
 e Gregor.
 e Gregor.
 C. Bull.
 Thomas.
 e Gregor.
 r March.
 r March.
 Stevenson.
 Stevenson.
 e Gregor.
 r-
 Thomas.
 of
 s-
 oy
 e Gregor.
 r March.
 Berthon.
 Waugh.
 ul Kane.
 A. Parks.
94. Cabinet Portrait (copy) - - - *E. Mc Gregor.*
 95. Portrait of a Child, - - - - *Peter March.*
 96. Cupid, (copy) after Reubens, - - - - *Peter March.*
 (The Property of Mr. Peters.)
 97. Full-length Portrait of a Child, (unfinished,) - *Peter March.*
 98. Group of Children and Dog, (copy) after Paul Veronese.
S. B. Waugh.
 99. The Bachelor's Breakfast, - - - *A Lady Amateur.*
 100. Portrait of ———, - - - - *S. B. Waugh.*
 101. Portrait of a Gentleman, - - - - *Hubert.*
 102. Group of Children, - - - - *Linen.*
 103. Portrait of a Gentleman, - - - - *Linen.*
 104. Portrait of a Lady, - - - - *Linen.*
 105. Portrait of a Gentleman, - - - - *Linen.*
 106. Portrait of a Gentleman, - - - - *Linen.*
 107. An Indian Chief, - - - - *T. Egan.*
 108. The Afternoon Nap, - - - - *A Lady.*
 109. Entrance to the City of Venice, after Canaletto *by a Lady.*
 110. The Pet Fawn, (copy), for sale - - - *T. H. Stevenson.*
 111. View on the Lake shore, near Toronto, for sale *T. H. Stevenson.*
 112. Portrait of a Gentleman, - - - - *Tinsley.*
 113. Portrait of a Gentleman, - - - - *Linen.*
 114. Landscape, - - - - *E. C. Bull.*
 115. Rustic Hospitality, (copy) - - - *Mc Gregor & Stevenson.*
 116. The Fisherman, (copy) - - - - *E. C. Bull.*
 117. Portrait of a Gentleman, - - - - *Paul Kane.*
 118. Marine View, - - - - *A Gentleman.*
 119. The Confession, (copy) - - - - *a Lady.*
 120. Spanish Girl, after Murillo, - - - - *a Lady.*
 121. Portrait of a Gentleman, - - - - *Nelson Cook.*
 122. The Fall of Man, for sale - - - *Mc Gregor & Stevenson.*
 123. Loch Lomond - - - - *T. M. Richardson.*
 124.
 125.

NORTH EAST ROOM.

- ndervelde.
 e Gregor.
 e Gregor.
 e Gregor.
126. Design for a Gothic Chapel. This design was made for
 the Hon. John Elmsley, to be erected on the front of his
 present cottage at Clover Hill, on the west side of Yonge
 Street. The landscape from nature. Estimated cost
 £12,800 - - - - *Howard.*

127. Interior - - - - - *Pupil, U. C. C.*
 128. Landscape - - - - - *By an Amateur.*
 129. Church - - - - - *By a Lady.*
 130. Gothic Castle, Syria - - - - - *By a Lady.*
 131. Design for a Grecian Villa - - - - - *T. Young, Architect.*
 132. Landscape - - - - - *By a Lady.*
 133. Cedar Swamp, a Camera Lucida sketch - - - - - *J. G. Howard.*
 134. Falls of Niagara, a Camera Lucida sketch, taken a little
 above the Ferry - - - - - *J. G. Howard.*
 135. Exterior of the Temple of Apollonopolis, in Egypt, from
 Denon - - - - - *W. Thomas.*
 136. Landscape - - - - - *By an Amateur.*
 137. Sketch of "Chief Justice" Steamer - - - - - *E. C. Bull.*
 138. Design for a Cathedral, in the Early Decorated style of
 Gothic Architecture - - - - - *W. Thomas, Architect.*
 139. Interior of Monastery (copy) - - - - - *By a Lady.*
 140. Perspective Elevation St. Matthew's Church, Birmingham.
 Erected from the designs of W. Thomas, Architect, in
 1839 - - - - - *W. Thomas.*
 141. Interior of Nunnery (copy) - - - - - *By a Lady.*
 142. Perspective elevation Lansdowne Crescent, Victoria House,
 and Elizabeth Place, Royal Leamington Spa, erected
 from the designs of W. Thomas, Architect - - - - - *W. Thomas.*
 143. Perspective Elevation Victoria Terrace Pump Room and
 Baths, and Bridge over the River Leam, Royal Leam-
 ington Spa, erected from the designs of W. Thomas,
 Architect - - - - - *W. Thomas.*
 144. Town Hall, Sudbury, Suffolk, erected A. D., 1826 *J. Johnston.*
 145. Niagara Falls, from the River - - - - - *Miss Davids.*
 146. Water Colour, after Prout - - - - - *Pupil, U. C.*
 147. Sketch of a Town Hall, submitted to the Commissioners
 of Montreal - - - - - *T. Young, Architect.*
 148. Angelo-Italian Villa (design for) - - - - - *T. Young, Architect.*
 149. Carrigounnell Castle, Limerick - - - - - *By a Lady.*
 150. A Calm. Dutch Galiot - - - - - *J. G. Howard.*
 151. North-east view of Tyendinaga Church, belonging to the
 Mohawk Indians. Erected from the designs of J. G.
 Howard, Architect - - - - - *J. G. Howard.*
 152. Parthenon, (copy) - - - - - *J. G. Howard, Architect.*
 153. Design for a Church in the Greek style *J. G. Howard, Architect.*



154. Geometrical Elevation of a Competition Design for the Fitzwilliam Museum of Painting and Sculpture, at Cambridge, in 1835 - - - *W. Thomas, Architect.*
155. Sketch of the Grange, the Residence of the Mayor of Toronto, - - - *H. B. Lane, Architect.*
156. Blenheim Park, Oxfordshire, the seat of his Grace the Duke of Marlborough. View, sunset - - *W. Thomas.*
157. An Idea in Perspective, with St. Peter's at Rome in the distance, - - - *J. G. Howard, Architect.*
158. Design for the Interior of a Church, *J. G. Howard, Architect.*
159. Greek Temple, (copy) - - - *J. G. Howard.*
160. Bastile, — liberating the Prisoners, - - *J. G. Howard.*
161. Indian Ink Drawing, - - - *by a Lady.*
162. Design for a Theatre, showing one-third of the southern facade, height of dome 200 feet; on the right and left are two Temples, dedicated to Shakspeare and Milton. *J. G. Howard, Architect.*
163. Geometrical Elevation; Two Houses erected, 1831, in Beauchamp Terrace, Royal Leamington Spa, from the designs of *W. Thomas, Architect,* - - *W. Thomas.*
164. Water-colour Drawing, after Prout, - - *Pupil U. C. C.*
165. Residence of Captain Eccles - - - *T. Fenwick.*
166. Greek Temple, (copy) - - - *J. G. Howard.*
167. Geometrical Elevation, Arbenie Place, Royal Leamington Spa, *W. Thomas, Architect,* - - *W. Thomas.*
168. Egyptian Hall, Mansion House, - - - *T. Young.*
169. Sketch of a Gateway, - - - *T. Young, Architect.*
170. Perspective Elevation of a Design for competition, made in 1813, for the Birmingham Town Hall. *W. Thomas, Architect.*
171. Design for a Government House. This design was made for the information of Sir John Colborne, and to show the impropriety of expending money in repairing the Old Government House; the site was on the Military Reserve, to the west of Mr. Crookshank's, Front-street. Estimated cost, £50,000 - - - *J. G. Howard, Architect.*
172. Youghal Abbey, Ireland, - - - *E. C. Bull.*
173. A Gothic Villa, erected at Handsworth, near Birmingham, in 1840, the Residence of James Russell, Esq., *W. Thomas, Architect,* - - *W. Thomas.*
174. Elizabethan Screen (date 1622,) Perspective of restored Interior of the Hall, Radford Semels. *W. Thomas, Architect.*

175. L'Aumorne, - - - - - *J. G. Howard.*
176. St. Mark's, Venice, - - - - - *J. G. Howard.*
177. Premium Design for Brock's Monument, *T. Young, Architect.*
178. - - - - - *T. Young, Architect.*
179. Design for a University. This plan was drawn in 1835, and presented to Sir John Colborne for King's College. This design, with a few alterations, has since been accepted by the Committee for Queen's College, to be erected at Kingston, - *J. G. Howard, Architect.*
180. Bridge House, Westmoreland, - - - *E. C. Bull.*
181. View from the interior of the Portico of the Temple of Appolonopolis, in Egypt, from Denon, - *W. Thomas.*
182. Design for a Church, - - - *W. Thomas, Architect.*
183. Interior of a Church, Spain - - - *E. C. Bull.*
184. Design for filling up the space between the old Gaol and Court House, on King Street. This design was made in 1834, and was intended for a Guildhall, Court House, Post Office, Public Library, Merchant's Exchange, &c. &c. &c. The old Gaol and Court House were to have been converted into the City and District Gaols, Police Office and temporary Lock-up Rooms. Estimated cost, £50,000. - *J. G. Howard, Architect.*
185. Washington's Tomb - - - - - *E. C. Bull.*
186. Al. Interior - - - - - *E. C. Bull.*
187. Temple of Vesta Tivoli - - - - - *E. C. Bull.*
188. North-east View of the Provincial Lunatic Asylum, now erecting in Toronto, from the designs of John G. Howard, Architect, to be completed in 1848, and will accommodate three hundred patients, with the necessary officers. The contour of the building is governed by the internal arrangement; in the dome is a reservoir for supplying the building with water. In the distance, on the right, is the Military Cemetery, with an obelisk in memory of Tecumseth, or with medallions to the memory of all the gallant officers who fought and bled in this country - - - *J. G. Howard, Architect.*
189. Design for a Monument to the memory of General Sir Isaac Brock. This design was made in 1840, immediately after the demolition of the old Monument; the lower pedestal is surrounded by a Grecian Doric portico of sturdy dimensions, supporting a stone terrace eighty feet from the

- ground (surrounded by a balustrade, from which a fine view would be obtained of the surrounding country), upon which is erected the solid piers that support the catenarian arch which supports the obelisk, and is concealed by the upper blocking and archivault. The Equestrian figure of Sir Isaac Brock is in the act of pointing out the enemy to his gallant 43rd. In the angles of each of the upper pedestals is a soldier in the attitude of a mourner with reversed arms. The estimated cost of erecting would be from ten to fifteen thousand pounds. - - - *J. G. Howard, Architect.*
190. Temple of Theseus (copy) *H. H. Horsey, pupil of J. G. Howard.*
191. Perspective Elevation of St. Paul's Church, London, C.W. recently Erected from the designs of W. Thomas, Architect, - - - - - *W. Thomas.*
192. Perspective Elevation of the Hall of Radford Semele, in the County of Warwick, erected from the designs of W. Thomas, Architect - - - - - *W. Thomas.*
193. Design for a Mausoleum - - - - - *W. G. Storm.*
194. Southern Facade of Brockville Court House, erected in 1842, from the designs of J. G. Howard, Architect. *J. G. Howard.*
195. Temple of Minerva *H. H. Horsey, pupil of J. G. Howard.*
196. Interior - - - - - *Mulready, R. A.*
197. Dresden Palace - - - - - *A Lady.*
198. St. Vincent - - - - - *A Lady.*
199. Interior - - - - - *E. C. Bull.*
200. Antique Griffin's Head - - - - - *T. Young, Architect.*
201. Foliage, from the collection of the Museum of the Vatican, *T. Young, Architect.*
202. Geometrical Elevation of Design for Buildings front of the Market, King Street, Toronto, approved by the Corporation, W. Thomas, Architect - - - - - *W. Thomas.*
203. West Elevation of the Roman Catholic Cathedral, now being erected in Church Street, Toronto, from the designs of W. Thomas, Architect - - - - - *W. Thomas.*
204. East Elevation of do. - - - - - *W. Thomas.*
- SOUTH-EAST ROOM.**
205. Flowers, - - - - - *A Lady.*
206. View in Italy, - - - - - *His Honour the Vice-Chancellor.*

207.	A Moss-Rose,	- - - - -	a Lady.	24
208.	Vase of Flowers,	- - - - -	a Lady.	24
209.	Holy Family, (copy)	- - - - -	a Lady.	24
210.	Flowers,	- - - - -	a Lady.	25
211.	Flowers,	- - - - -	Miss David.	25
212.	A Flower,	- - - - -	a Lady.	25
213.	Bouquet of Family Hair	- - - - -	Mrs. Seemans.	25
214.	Books,	- - - - -	a Lady.	25
215.	Crayon Head,	- - - - -	T. Fenwick.	25
216.	Crayon Head,	- - - - -	a Lady.	25
217.	Crayon Figure,	- - - - -	a Lady.	25
218.	Crayon Head,	- - - - -	T. Fenwick.	
219.	Crayon Drawing,	- - - - -	a Lady.	25
220.	Crayon Figure,	- - - - -	A Pupil U. C. C.	25
221.	Crayon Head,	- - - - -	a Lady.	26
222.	Crayon Drawings,	- - - - -	a Lady.	26
223.	Crayon Drawing,	- - - - -	a Lady.	26
224.	Pencil Sketch Chaudiere Falls,	- - - - -	a Lady.	26
225.	Head of Madonna, Indian ink	- - - - -	a Lady.	26
226.	Portrait in Pencil,	- - - - -	T. H. Stevenson.	26
227.	Crayon Drawing "Render unto Cæsar the things that are Cæsar's,"	- - - - -	a Lady.	26
228.	Cattle in Crayons,	- - - - -	F. C. Lowe.	"
229.	"Hafed," favourite Hound of Sir Walter Scott,	- - - - -	E. C. Bull.	26
230.	Hound, in Crayon,	- - - - -	a Lady.	26
231.	Crayon Drawing, "The Fortune Teller," after Sir Joshua Reynolds,	- - - - -	a Lady.	27
232.	Pencil Drawing,	- - - - -	A Pupil, U. C. C.	27
233.	Pencil Drawing	- - - - -	by a Lady.	27
235.	Pencil Drawing.	- - - - -		27
236.	Dog's Head, in Crayon	- - - - -	T. Fenwick.	27
237.	Household Treasures	- - - - -	by a Lady.	27
338.	Pencil Drawing	- - - - -	by a Lady.	27
239.	Pencil Drawing	- - - - -	by a Pupil U. C. C.	27
240.	Pencil Drawing	- - - - -	by a Lady.	27
241.	Pencil Drawing	- - - - -	by a Lady.	27
242.	Castle Chillon	- - - - -	by a Lady.	27
243.	Figure, in Pencil	- - - - -	by a Pupil U. C. C.	27
244.	Moonlight Piece, in Pencil	- - - - -	by a Lady.	27
245.	Tintern Abbey	- - - - -	by a Lady.	27
246.	Pencil Drawing	- - - - -	W. Thomas.	27

a Lady.	247. Frame of Wood Engravings	-	-	-	-	F. C. Lowe.
a Lady.	248. Frame of Wood Engravings	-	-	-	-	F. C. Lowe.
a Lady.	249. Water Colour Drawing	-	-	-	-	by a Lady.
a Lady.	250. Pencil Drawing	-	-	-	-	by a Lady.
as David.	251. Miniature	-	-	-	-	T. H. Stevenson.
a Lady.	252. Miniature	-	-	-	-	Hoppner Meyer.
Seemans.	253. Water Colour Drawing	-	-	-	-	His Hon. the Vice Chancellor.
a Lady.	254. Miniature	-	-	-	-	T. H. Stevenson.
Fenwick.	255. Lake of Varese, North Italy	-	-	-	-	His Hon. the Vice Chancellor.
a Lady.	256. Miniature	-	-	-	-	T. H. Stevenson.
a Lady.	257. Scene in Westmoreland	-	-	-	-	William Havell.
Fenwick.		(The property of his Honour the Vice Chancellor.)				
a Lady.	258. Miniature	-	-	-	-	T. H. Stevenson.
U. C. C.	259. Satan	-	-	-	-	Hoppner Meyer.
a Lady.	260. Miniature of Children	-	-	-	-	T. H. Stevenson.
a Lady.	261. Fruit and Flowers	-	-	-	-	by a Lady.
a Lady.	262. Family Group	-	-	-	-	T. H. Stevenson.
a Lady.	263. Miniature	-	-	-	-	Hoppner Meyer.
a Lady.	264. The Broken Pitcher	-	-	-	-	T. H. Stevenson.
Stevenson.	265. Landscape, by	-	-	-	-	Cox.
re		(The property of his Honour the Vice Chancellor.)				
a Lady.	266. Miniature	-	-	-	-	T. H. Stevenson.
C. Lowe.	*C Flowers	-	-	-	-	Mr. Lees.
C. Bull.	267. Miniature	-	-	-	-	Hoppner Meyer.
a Lady.	268. Sketch	-	-	-	-	by a Lady.
ua	269. Miniature	-	-	-	-	T. H. Stevenson.
a Lady.	270. Miniature	-	-	-	-	Hoppner Meyer.
U. C. C.	271. Miniature	-	-	-	-	T. H. Stevenson.
y a Lady.	272. Family Group	-	-	-	-	T. H. Stevenson.
	273. Fisherboys	-	-	-	-	T. H. Stevenson.
Fenwick.	274. Miniature	-	-	-	-	Lockwood.
y a Lady.	275. Miniature	-	-	-	-	T. H. Stevenson.
y a Lady.	276. Miniature	-	-	-	-	Lockwood.
U. C. C.	277. Miniature	-	-	-	-	by a Lady.
y a Lady.	278. Miniature	-	-	-	-	Hoppner Meyer.
y a Lady.	279. Miniature	-	-	-	-	Hoppner Meyer.
y a Lady.	280. Miniature of a Lady	-	-	-	-	T. H. Stevenson.
U. C. C.	281. Miniature	-	-	-	-	Lockwood.
y a Lady.	282. Miniature	-	-	-	-	Hall.
y a Lady.	283. Miniature	-	-	-	-	By a Lady.
Thomas.	284. Bird and Fruit	-	-	-	-	By a Lady.



285. Interior - - - - - *T. Young, Architect.*
286. Interior - - - - - *T. Young, Architect.*
287. Antique Fragment - - - - - *T. Young, Architect.*
288. Water Colour Drawing - - - - - *Miss David.*
289. Water Colour Drawing - - - - - *Miss David.*
290. The Grampian Hills - - - - - *Miss David.*
291. Miniature of a Lady - - - - - *T. H. Stevenson.*
292. Miniature of a Child - - - - - *T. H. Stevenson.*
293. Pencil Drawing - - - - - *By a Lady.*
294. Perspective Elevation of a Villa in the Italian style, now
being erected in Girard Street, Toronto, for A. Dixon,
Esq. - - - - - *W. Thomas, Architect.*
295. Perspective elevation of a Church, now being erected near
Mimico, Dundas Street, from the designs of
W. Thomas, jun., Architect.
- *A Design for a Town Hall - - - - - *J. Johnston, Architect.*
296. Petrarch's Villa - - - - - *T. Young, Architect.*
297. Lithographic Print, Warwick House, Birmingham, erected
in 1839, from the designs of W. Thomas, Architect *W. Thomas.*
298. Lithographic Print, Warwick Place, Milverton, Royal
Leamington Spa, erected from the designs of
W. Thomas, Architect.
299. Her Majesty perusing a State Document (a drawing on
stone), after Sir W. Ross, R. A., by - *Jacob Hauser.*
300. Royal Exchange, a drawing on Stone, by - *Jacob Hauser.*
301. Specimen of Ornamental Writing on Stone, by *Jacob Hauser.*
302. Maps, from Engravings and Drawings on Stone, by *Jacob Hauser.*
303. Perspective Elevation of the Roman Catholic Cathedral,
now being erected in Church Street, Toronto, from the
designs of W. Thomas, Architect, - - - *W. Thomas.*
304. Perspective Elevation of a Chapel erected in Warwick,
Royal Leamington, Spa, W. Thomas, Architect, *W. Thomas.*
305. Wellington Terrace, now being erected in Wellington
Street, Toronto, W. Thomas, Architect, - *W. Thomas.*

WEST ROOM.

306. Charity, by Francesco Penni, called H. Fattore, a pupil of
Raffaello, born at Florence, in 1488, died 1528, the property of
R. P. Crooks, Esquire.
307. Raphael Giving Sight, by Peren del Vazoo, the property of
R. P. Crooks, Esquire.

308. Saint Cecilia, the property of the Right Rev. Michael Power, Roman Catholic Bishop of Toronto.
309. Coast Scene, by Vernet, the property of J. M. Strachan, Esquire.
310. La Madalina, by Guircine, the property of H. Rowsell, Esquire.
311. Holy Family, by Corregio, the property of H. Rowsell, Esquire.
312. Laban in search of the Hidden Treasure, the property of the Right Rev. Michael Power, Roman Catholic Bishop of Toronto.
313. An Italian Landscape, the property of the Hon. H. J. Boulton.
314. Battle Piece, by Borgognoni, the property of the Mayor of Toronto.
315. A Flight of Cherubs, the property of W. Wakefield, Esquire.
316. Landscape after Dirk, Dolen, the property of J. M. Strachan, Esq.
317. Portrait of the Hon. H. J. Boulton, Toronto, by M. Caul.
318. Battle Piece, by Wouverman, the property of the Hon. H. J. Boulton.
319. Infant Hercules Strangling the Serpents, by C. R. Leslie, R. A., after Sir Joshua Reynolds, P. R. A., the property of J. M. Strachan, Esquire.
320. Portrait of a Lady, by Lambden.
321. Rome, by R. B. Hanadin, the property of the Rev. J. Maynard.
322. Landscape, by E. W., the property of the Hon. H. J. Boulton.
323. Battle Piece, by Borgognoni, the property of the Mayor of Toronto.
324. Dutch Landscape, by J. Cabel, the property of J. M. Strachan, Esquire.
325. Moonlight Scene, by Williams, the property of the Hon. H. J. Boulton.
326. The Portrait of John Churchill, Duke of Marlborough, by Sir Peter Lely, the property of Mr. Charles March.
327. Battle Piece, by Wouverman, the property of the Mayor of Toronto.
328. Sketch of Dogs Fighting, by Landseer, the property of J. M. Strachan, Esquire.
329. Battle Piece, by Wouverman, the property of the Hon. H. J. Boulton.
330. Landscape with Figures, by Morland, the property of D. Murray, Esquire.
331. Landscape on Copper, Waterloo, the property of J. M. Strachan, Esquire.
332. Landscape, the property of J. M. Strachan, Esquire.
333. Philosopher Reading, after Rembrant, the property of J. M. Strachan, Esquire.

334. Dogs and Game, by Houde Slater, the property of J. M. Strachan, Esquire.
335. Tintern Abbey by Moonlight, the property of the Mayor of Toronto.
336. Landscape, by Decker, the property of J. M. Strachan, Esquire.
337. Landscape, the property of J. M. Strachan, Esquire.
338. Healing the Sick, the property of R. P. Crooks, Esquire.

MODEL ROOM.

339. Specimen of Lithographing, Maps of London District, &c., by Jacob Hauer.
340. Mills' Hot Air Furnace.
341. Specimens of Encrusted Tile Paving, used in the floor of the Chancel of St. Paul's Church, London, C. W., from Broseley, Staffordshire, England, the property of W. Thomas, Esquire.
342. Specimen of Lithographing, Map of Huron District, by J. Hauer.
343. Topographical Plan of the City of Toronto. This Plan is compiled from actual survey commenced in 1835, and will be completed in 1848, together with a Chart of the Harbour and coast, by J. G. Howard, Architect.
345. A Buttress Canopy, part of the Altar Piece, St. Paul's Church, London, C. W., designed by W. Thomas, modelled by J. Forster.
346. Three pieces of Gothic Windows and Panelling, designed by Charles Barry, Esquire, Architect, modelled in plaster, and the enriched work of the original carved in stone, being part of the decoration in the execution of the river front of the New Houses of Parliament, England, by J. Thomas, Sculptor, the property of W. Thomas, Esquire.
347. A pair of Torsos, Studies, by C. Hyde.
348. Bust of the Earl of Egremont, modelled by Foster, Toronto.
350. A Hand, in Portland Stone, by C. Hyde.
351. Four Gothic Heads, carved in stone by John Thomas, Sculptor, London, England, the property of W. Thomas, Esq., Architect.
352. Model of Sir Walter Scott, by Luigi, the property of J. M. Strachan, Esquire.
353. A Corinthian Capitol, for the Court-room in the Town Hall, Niagara, now being erected from the designs of W. Thomas, Architect, example from the Temple of Vesta at Tivoli, modelled by Mr. Robert Dowe, Toronto.
354. Anatomical Figure, from Michael Angelo, the property of W. Thomas, Esquire.

355. Gothic Head, with Shield Proper, papier mâché, from Bielfield's manufactory, London, England, the property of W. Thomas, Esquire.
356. Two Slabs of Scagliola Marble, the first specimen manufactured in the Province, by Messrs. Hyde and Johnson.
357. Two Models in Wax, Busts of a Lady and Gentleman, the property of H. Rowsell, Esquire.
358. Fragments of the Parthenaic Frize, modelled in plaster, the property of W. Thomas, Esquire.
359. Medallion Bust in high relief, modelled in plaster by J. Thomas, Sculptor; ditto Medallion Bust, ditto ditto, the property of W. Thomas, Architect.
360. A Centre Piece, modelled by Foster, Toronto.
361. Gothic Spandril Flowers and Rosettes, designed by W. Thomas, Architect, modelled by J. Forster, for the decoration of the Altar Piece, interior of St. Paul's Church, London, C. W.
362. Four Gothic Square Flowers, designed by W. Thomas, Architect, modelled by J. Cochrane for the decoration of the interior of St. Paul's Church, London, C. W.
363. Two Gothic Bosses, ditto ditto.
364. Models in Plaster—Napoleon Crossing the Alps; Pilgrimage to Canterbury, &c. &c. &c., the property of J. G. Howard, Esq., Architect.
365. Pair of Trusses, modelled by Henry Parsons, from a design by W. Thomas, Architect.
366. A Bust of Lord Metcalfé, our much to be lamented late Governor General, modelled in plaster from an original Bust by Gardner, Sculptor, Hamilton, C. W., the property of W. Thomas, Esq.
367. Anticlops & Stratonica, a school copy from the original, by Cortona.
368. A Study, in Portland Stone, by C. Hyde.
369. Gothic Head, carved in stone by J. Cochrane, Toronto.
370. Angelic Head, in the Gothic style, designed by W. Thomas, Architect, modelled by J. Cochrane, Toronto.

ADDENDA TO NORTH & SOUTH EAST ROOM.

371. Boquet of Wax Flowers, - - - - - *by a Lady.*
372. Design for Catholic Cathedral, Toronto, *K. Tully, Architect.*
373. Design for a Town Hall, - - - - - *K. Tully, Architect.*
374. Portrait of a Gentleman - - - - - *T. H. Stevenson.*
375. Master Hope (copy) - - - - - *T. H. Stevenson.*

376. Miniature of a Gentleman (for sale) *T. H. Stevenson.*
 377. Engraving of the Rev. J. McCaul, L. L. D., painted by
 Peter March, engraved by *Warner.*
 378. Engraving of the Hon. and Right Rev. John Strachan,
 D. D., Lord Bishop of Toronto, painted by Berthon,
 engraved by *Warner.*
 379. Miniature of a Gentleman *T. H. Stevenson.*
 380. A Shepherd's Dog and Ram, by *Nixon.*
 381. Frame of Herald Engravings *J. Wheeler.*
 382. Medal, by H. Lorenz *J. Wheeler.*
 383. Perspective Elevation, Drawing on Wood of the Town Hall
 and Market House, Niagara, now being erected from the
 designs of W. Thomas, Architect, *W. Thomas.*
 384. A Pair of Obelisks in the Model Room—Models of the
 Obelisk of Cleopatra, executed in Black and Gold Marble,
 the property of W. Thomas, Esquire.
 385. Medal of Sir Isambard Brunel, Engineer, &c., the pro-
 perty of W. Thomas, Esquire.
 386. Frame of Views in North-east Room, Fall of Niagara,
 &c. *J. G. Howard.*

Stevenson.

by Warner.

n,

ny.

Warner.

Stevenson.

Nixon.

Wheeler.

Wheeler.

all

the

Thomas.

the

le,

ro-

ra,

Howard.

