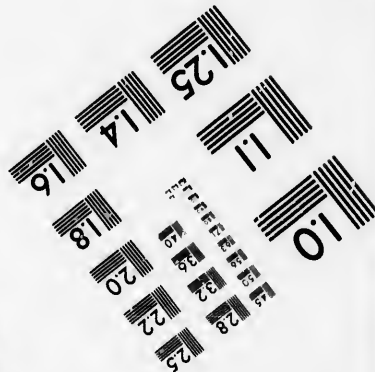
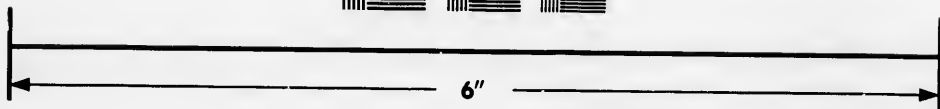
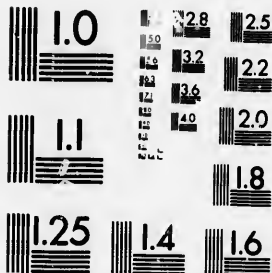


**IMAGE EVALUATION  
TEST TARGET (MT-3)**



**Photographic  
Sciences  
Corporation**

23 WEST MAIN STREET  
WFBSTER, N. Y. 14580  
(716) 872-4503

**CIHM/ICMH  
Microfiche  
Series.**

**CIHM/ICMH  
Collection de  
microfiches.**



**Canadian Institute for Historical Microreproductions / Institut canadien de microreproductions historiques**

**© 1986**

Technical and Bibliographic Notes/Notes techniques et bibliographiques

The Institute has attempted to obtain the best original copy available for filming. Features of this copy which may be bibliographically unique, which may alter any of the images in the reproduction, or which may significantly change the usual method of filming, are checked below.

L'Institut a microfilmé le meilleur exemplaire qu'il lui a été possible de se procurer. Les détails de cet exemplaire qui sont peut-être uniques du point de vue bibliographique, qui peuvent modifier une image reproduite, ou qui peuvent exiger une modification dans la méthode normale de filmage sont indiqués ci-dessous.

- |   |   |
|---|---|
| <input type="checkbox"/> Coloured covers/<br>Couverture de couleur  | <input type="checkbox"/> Coloured pages/<br>Pages de couleur  |
| <input type="checkbox"/> Covers damaged/<br>Couverture endommagée   | <input checked="" type="checkbox"/> Pages damaged/<br>Pages endommagées   |
| <input type="checkbox"/> Covers restored end/or laminated/<br>Couverture restaurée et/ou pelliculée   | <input type="checkbox"/> Pages restored end/or laminated/<br>Pages restaurées et/ou pelliculées   |
| <input type="checkbox"/> Cover title missing/<br>Le titre de couverture manque  | <input checked="" type="checkbox"/> Pages discoloured, stained or foxed/<br>Pages décolorées, tachotées ou piquées  |
| <input type="checkbox"/> Coloured maps/<br>Cartes géographiques en couleur  | <input type="checkbox"/> Pages detached/<br>Pages détachées   |
| <input type="checkbox"/> Coloured ink (i.e. other than blue or black)/<br>Encre de couleur (i.e. autre que bleue ou noire)  | <input checked="" type="checkbox"/> Showthrough/<br>Transparence  |
| <input type="checkbox"/> Coloured plates and/or illustrations/<br>Planches et/ou illustrations en couleur   | <input type="checkbox"/> Quality of print varies/<br>Qualité inégale de l'impression  |
| <input type="checkbox"/> Bound with other material/<br>Relié avec d'autres documents  | <input type="checkbox"/> Includes supplementary material/<br>Comprend du matériel supplémentaire  |
| <input type="checkbox"/> Tight binding may cause shadows or distortion along interior margin/<br>La reliure serrée peut causer de l'ombre ou de la distorsion le long de la marge intérieure  | <input type="checkbox"/> Only edition available/<br>Seule édition disponible  |
| <input type="checkbox"/> Blank leaves added during restoration may appear within the text. Whenever possible, these have been omitted from filming/<br>Il se peut que certaines pages blanches ajoutées lors d'une restauration apparaissent dans le texte, mais, lorsque cela était possible, ces pages n'ont pas été filmées. | <input type="checkbox"/> Pages wholly or partially obscured by errata slips, tissues, etc., have been refilmed to ensure the best possible image/<br>Les pages totalement ou partiellement obscurcies par un feuillet d'errata, une pelure, etc., ont été filmées à nouveau de façon à obtenir la meilleure image possible. |
| <input checked="" type="checkbox"/> Additional comments: [Printed ephemera] 1 sheet (verso blank)<br>Commentaires supplémentaires:  |   |

This item is filmed at the reduction ratio checked below/  
Ce document est filmé au taux de réduction indiqué ci-dessous.

10X	12X	14X	16X	18X	20X	22X	24X	26X	28X	30X	32X
						✓					

The copy filmed here has been reproduced thanks to the generosity of:

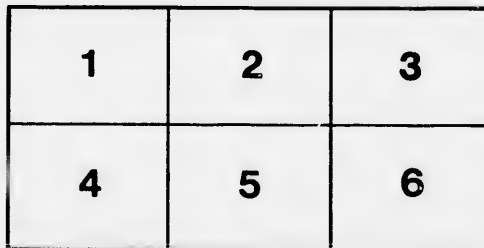
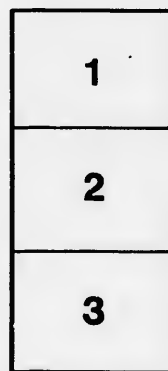
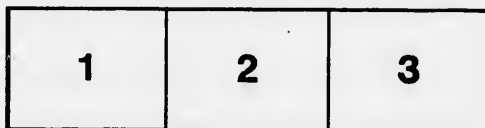
New Brunswick Museum  
St. John

The images appearing here are the best quality possible considering the condition and legibility of the original copy and in keeping with the filming contract specifications.

Original copies in printed paper covers are filmed beginning with the front cover and ending on the last page with a printed or illustrated impression, or the back cover when appropriate. All other original copies are filmed beginning on the first page with a printed or illustrated impression, and ending on the last page with a printed or illustrated impression.

The last recorded frame on each microfiche shall contain the symbol  $\rightarrow$  (meaning "CONTINUED"), or the symbol  $\nabla$  (meaning "END"), whichever applies.

Maps, plates, charts, etc., may be filmed at different reduction ratios. Those too large to be entirely included in one exposure are filmed beginning in the upper left hand corner, left to right and top to bottom, as many frames as required. The following diagrams illustrate the method:



L'exemplaire filmé fut reproduit grâce à la générosité de:

New Brunswick Museum  
St. John

Les images suivantes ont été reproduites avec le plus grand soin, compte tenu de la condition et de la netteté de l'exemplaire filmé, et en conformité avec les conditions du contrat de filmage.

Les exemplaires originaux dont la couverture en papier est imprimée sont filmés en commençant par le premier plat et en terminant soit par la dernière page qui comporte une empreinte d'impression ou d'illustration, soit par le second plat, selon le cas. Tous les autres exemplaires originaux sont filmés en commençant par la première page qui comporte une empreinte d'impression ou d'illustration et en terminant par la dernière page qui comporte une telle empreinte.

Un des symboles suivants apparaîtra sur la dernière image de chaque microfiche, selon le cas: le symbole  $\rightarrow$  signifie "A SUIVRE", le symbole  $\nabla$  signifie "FIN".

Les cartes, planches, tableaux, etc., peuvent être filmés à des taux de réduction différents. Lorsque le document est trop grand pour être reproduit en un seul cliché, il est filmé à partir de l'angle supérieur gauche, de gauche à droite, et de haut en bas, en prenant le nombre d'images nécessaire. Les diagrammes suivants illustrent la méthode.

rata  
o

elure,  
à

32X

# Dr. J. W. QU

# VETERINARY

Being a Synopsis of the Diseases of Horses, with

Part Affected.	DISEASE.	CAUSE.	SYMPTOMS IN HORSES.	
EXTERNAL OR LOCAL DISEASES.	HEAD & WITHERS.	Hide round, Surfeit or Scab, Mange or Lice	Bad keep, poverty, internal disease, Bad keep, chill; also foul feeding, Poverty, filth, contagion,	Skin firm and immovable on the body. Coat staves, pimples or cabs on the skin. Skin thick and wrinkled with itching, rubbing, yellow discharge, Dandruff, hard & red or black lumps without hair,
		BODY GENERALLY.	Plaits and Warbles, Warts, Angrierries, Farcy,	Bruise of a saddle, Foulness of habit, constitutional liability, Inoculation from glanders and debility,
	UPPER.		Wounds incised, contused, and Lacerated,	Cut of a knife or other instrument, Fall, blow, bite or bruise,
		LEGS.	Joints and Tendons,	Blow from a sharp instrument,
	LOWER.		Ulcers foul,	Violent bruise, neglected wounds,
		HOOF & CANON BONE.	Tumors in general, Poll Evil and Fistula,	Blow, fever constitutional, Tight reining, blow or bruise,
	HOOF & CANON BONE.		Under-ill, Yellows, Abscess of the Udder,	Confinement, indigestion, disease of liver, Udder-ill neglected, cut or bruise,
		HOOF & CANON BONE.	Swelled Legs, Weed, Black Spall, or Quarter-ill, Palsy, Paralysis,	Debility, Plethora, hard work, fever, Strain of back or loins, spinal pressure,
	HOOF & CANON BONE.		Fractures, Springhalt, Strains,	Falls, kicks, or severe blows, Exposure to cold and wet, nervous irritation, Sudden slip, over extension of ligaments or tendons,
		HOOF & CANON BONE.	Spavin, Carb, Thoroughpin, Capelet, Sallanders and Mallenders, Callous Tendons, Chronic Strains, Splents,	Hard work, strains, kicking, Gross habit, want of exercise, Hard work, old strains, Hard work, when young,
HOOF & CANON BONE.	Windgalls, Grease and Heelcracks,		Hard work, strains, Cold, constitutional debility, confinement,	
	HOOF & CANON BONE.	Tread or Tramp, Ringbone, Ossified Ligaments, Sidebones, Inflamed Pastern Joint, Strain of Pastern Joint, Navicular Disease,	Hard work, want of exercise, Bruise from the opposite foot, Hard work, strain, high action, Bruise or contusion, high action, Excessive exertion, Violent exertion, sudden slip or wrench, Chronic strain, contraction, close confine-	

# QUIMBY'S FARCY TABLET,

## Horses, with their Cause, Symptoms and Cure.

SYMPTOMS IN HORSES.	CURE IN HORSES.	PRESCRIPTIONS.
<p>Firm and immovable on the body, staves, pimples or scabs on the skin, thick and wrinkled with itching and rubbing, yellow discharge, enlarged on the hock, hard &amp; sore, or black lumps without hair,</p>	<p>{ Good grooming and diet—give No. 1. and every morning after No. 3.—clothe the body, and keep the horse warm. Give No. 1. and two days after No. 7. Apply No. 15. keep cool and uncovered. Poultice, apply No. 22, hot or bitter. Cut them off. Apply No. 17. Give No. 1.</p>	<p>No. 1.—PHYSIC BALL FOR HORSES.—Cape Aloes from 6 to 10 drams—Castile soap, 1 dram—Spirit of Wine, 1 dram—Syrup to form the ball. If mercurial physic be wanted, add from <math>\frac{1}{2}</math> a dram to 1 dram of calomel.                      Precious to a horse, and during its operation, he should be fed on bran washes, allowed plenty of chilled water, and have exercise. Physic is always useful; it is necessary to be administered in almost every disease; it improves digestion, and gives strength to the lacteals, by cleansing the intestines and unloading the liver; and if the animal is afterwards properly fed, will improve his strength and condition in a remarkable degree. Physic, except in urgent cases, should be given in the morning, and on an empty stomach; and if required to be repeated, a week should intervene between each dose.                      Before giving a horse a ball, see that it is not too hard or too large. Cattle medicine is always given as a drench.</p>
<p>Large tumors on body and inside the legs, break and leave small sores, the division of the parts, inflammation of the skin and muscles,</p>	<p>Give No. 3; cauterize farcy buds, and dress with No. 24.                      Gen'l direction for treatment of wounds—Clean every wound well, if possible without washing. Place the parts in their original situation, stitch and bandage. Low diet, bleed, purge and poultice. Apply No. 14. When matter appears, apply No. 13—if proud flesh rises, put on a little of No. 3. If mortification ensues, use strong stimulants and tonics.</p>	<p>No. 2.—PHYSIC FOR CATTLE.—Cape Aloes, 4 drams to 1 ounce; Epsom salts, 4 to 6 ounces; powdered ginger, 3 dr. Mix and give in a quart of gruel.—For calves, one-third of this will be a dose.</p>
<p>Swelling of a joint, and discharge of a glairy fluid each joint of synovia, locking sore, with anious discharge; and pipes on sinews, lumps on various parts, four or swelling, anious discharge, and pipes on poll &amp; withers, ting and pain in the udder,</p>	<p>Close wound by actual cauterly, or touch edges with lunar caustic. Apply No. 14, and bandage, bleed, &amp;c., observe rest. Apply a poultice, dress with No. 24. When healthy matter flows, apply No. 13.—Bandage, bleed, &amp;c., observe rest. Bleed, purge, foment with chamomile decoction, or No. 22 heated. If abscess forms, lance, and dress with No. 13. Setons and dress with No. 16, or a clay poultice and No. 24. Use the knife. Foment. Draw the milk. Apply No. 21. Give No. 1. Lance deep, and treat as a common abscess.</p>	<p>No. 3.—TONIC FOR HORSES AND CATTLE.—Sulphate of Copper, 1 ounce to 12 dr.; white sugar, <math>\frac{1}{2}</math> ounce. Mix and divide into eight powders, and give one or two daily in the animal's food. This is a good strit-gent powder for Grease.</p>
<p>Swelling of matter in udder or teats, enlargement on swelling of one or both hind legs, diar motion in hind legs, and loss of feeling, ability to move that perceptible to touch, diar catching up of a hind leg,</p>	<p>Bleed, apply Nos. 20, 1 and 6, with exercise. Blister loins or insert setons; physic and rest. Destroy the animal, or leave to nature. Incurable.</p>	<p>No. 4.—CORRIAL FOR HORSES AND CATTLE.—Powdered opium, 1 dr.; ginger powdered, 2 dr.; allspice, powdered, 3 dr.; caraway seeds powdered, 4 dr.—Make into a ball with treacle, or give as a drench or gruel. For the Gripes and Hove in Cattle, add to the above a teacupfull of spirits or oil, or give two ounces of the oil of turpentine, and repeat every two hours until the animal is relieved.</p>
<p>Hot and tender, severe lameness, swelness &amp; enlargement about hock joint, ery eruption at bend of knee &amp; hock, thickening of the back sinews, enlargement below the knee, and swelling about stock joint, and discharge from heels and fetlock grapes, and discharge from the coronet,</p>	<p>Foment, bleed, physic, rest. Apply Nos. 22, 33, or poultice.                      Setons, firing and blistering, or apply No. 26. Keep clean. Apply No. 18. Give No. 6. Firing and blistering, or apply No. 26. Blister, seton, cut through the periosteum, or apply No. 26. Tight bandages, wet with No. 22, or blister. Wash clean, then dry and apply No. 3 or 24; give Nos. 1 and 6. For grapes cut them off, apply fermenting poultice, and dress with No. 20, or Nos. 21, and 19. Poultice, physic, apply No. 20 or 15. Firing and blistering, or apply No. 26. If chronic, nerving. Apply high heeled shoe, and nerve the horse. Bleed largely from feet and neck, poultice, give No. 1 and 6. Poultice, or cut a seton thro' the frog, rest. Seton through the frog, heeled shoe, nerving.</p>	<p>No. 5.—DIURETIC BALL.—Hard soap and common turpentine, each 4 dr.; oil of juniper, 20 drops; powdered rosin to form the ball. For Dropsy, Water Farcy, Broken Wind or Febrile Diseases, add to the above allspice and ginger each 2 dr.; make four balls and give one morning and evening.</p>
<p>Swelling of wound on hock, lameness, swelness, bony enlargement, round pastern, enlargement on the heels, fore ft only or, great pain and lameness, goes on heels, er in the trot that walk, foot hot,</p>	<p>(Frog pressure. Thin sole and quarters, and keep feet moist. Apply tins or firing and blistering, or apply No. 26. If chronic, nerving.</p>	<p>No. 6.—DIURETIC POWDERS.—Powdered rosin and nitre, each 4 oz.; mix and divide into 12 parts; give one daily. For Grease, swelled legs, &amp;c.</p>
<p>Swelling of wound on hock, lameness, swelness, bony enlargement, round pastern, enlargement on the heels, fore ft only or, great pain and lameness, goes on heels, er in the trot that walk, foot hot,</p>	<p>Apply high heeled shoe, and nerve the horse. Bleed largely from feet and neck, poultice, give No. 1 and 6. Poultice, or cut a seton thro' the frog, rest. Seton through the frog, heeled shoe, nerving.</p>	<p>No. 7.—ALTERATIVE OR CONDITION POWDER.—Rosin and nitre, each 2 oz.; levigated antimony, 1 oz. Mix for 8 or 10 doses, and give one night and morning.—When this is to be given to cattle, add Glauber salts 1 lb.</p>
<p>Swelling of wound on hock, lameness, swelness, bony enlargement, round pastern, enlargement on the heels, fore ft only or, great pain and lameness, goes on heels, er in the trot that walk, foot hot,</p>	<p>Apply high heeled shoe, and nerve the horse. Bleed largely from feet and neck, poultice, give No. 1 and 6. Poultice, or cut a seton thro' the frog, rest. Seton through the frog, heeled shoe, nerving.</p>	<p>No. 8.—FEVER BALL.—Cape Aloes, 2 oz.; nitre, 4 oz.; treacle to form mass. Divide into 12 balls, and give one morning and evening till the bowels are relaxed; then give No. 6 or 10.</p>
<p>Swelling of wound on hock, lameness, swelness, bony enlargement, round pastern, enlargement on the heels, fore ft only or, great pain and lameness, goes on heels, er in the trot that walk, foot hot,</p>	<p>Apply high heeled shoe, and nerve the horse. Bleed largely from feet and neck, poultice, give No. 1 and 6. Poultice, or cut a seton thro' the frog, rest. Seton through the frog, heeled shoe, nerving.</p>	<p>No. 10.—SEDATIVE and WAX OIL.—Powdered white hellebore, <math>\frac{1}{2}</math> dr.; linseed powder, <math>\frac{1}{2}</math> oz. If necessary, make into a ball with treacle. This ball is a specific for weed. Two oz. of oil of turpentine in <math>\frac{1}{2}</math> bottle of linseed oil, is an effectual remedy for worms in horses and cattle.</p>

Firing and blistering, or apply No. 26. If chronic, nerving. Apply high heeled shoe, and nerve the horse. Bleed largely from feet and neck, poultice, give No. 1 and 6. Poultice, or cut a seton thro' the frog, rest. Seton through the frog, heeled shoe, nerving.

INTERNAL DISEASES.

FEET.

Ringbone  
Ossified  
Inflamed  
Strain of  
Navicular Disease,  
Contraction,  
Corns,  
  
Sandcrack,  
Canker, Loo, Foot rot,  
  
Trush,  
Quittor,  
Prick in Shoeing,

Hard work, strain, high action,  
Bruise or contusion, high action,  
Excessive exertion,  
Violent exertion, sudden slip or wrench,  
Chronic strain, contraction, close confinement,  
Bad shoeing, hot stables, confinement,  
Contraction, fixed sole and quarters, concussions,  
  
Brittleness of the hoof, hard-trotting,  
Bruise in the foot, neglected thrush, fith, &c.  
Contraction, want of exercise,  
Tramp, contusion of the coronet,  
A nail driven too close or too far,

Lameness, bony enlargement on heels, fore feet  
Bony enlargement on heels, fore feet  
Fever, great pain and lameness, goes on the heels,  
Lamer in the trot than in the walk, foot hot  
Lameness, goes on the heels,  
Foot oblong, instead of round,  
Red spot in sole, twinges  
Lameness,  
Assurance or crack in the hoof downwards  
Ulceration of sensible sole or laminae  
Discharge from cleft of the frog,  
Lameness, pipes or sores in the foot,  
Lameness after shoeing, finch from shoeing  
sure,

SYSTEM GENERALLY.

Fever, simple or symptomatic, and general Inflammation,  
  
Common Cold, Catarrhal Fever or Dis-temper,  
Nervous Exhantion, or Acute Inflammation,  
Tetanus or Lock Jaw,  
Hydrophobia or madness,

Cold or chill, high feeding, local irritation or pain,  
  
Sudden change of temperature, chill,  
Plethora and over exertion,  
Nervous irritation, local injuries, wounds &c.,  
Bite of a rabid or mad animal,

Lassitude, shivering, quick pulse  
breathing, off feet

ORGANS OF RESPN.

Chronic Cough, Asthma, broken wind, roaring, &c.  
Inflammation of the Lungs, Pleura, or Chest,  
Inflammation of the Stomach, Stomach Stagger,  
Inflammation of the Bowels, or Red Colic,  
Flatulent Colic and Gripes, Hove or Swelling,  
Diarrhoea or Looseness, Scouring or Purging,  
Dysentery, or Molten-Grease, Braxy,

Neglected cold, immoderate feeding, hard work,  
Violent exertion, chill or metastasis,  
Swallowing poison, overloading stomach,  
Sudden change of diet and temperature, metastasis, strong phylis,  
Indigestion, constipation, spasm, stranguary,  
Hard riding, unwholesome diet, debility,  
Irritation or inflammation of the bowels,

Fever, cough, nasal discharge of a bloody color,  
Pulse and breathing greatly hurried, flat and sweats,  
Haw protrudes over the eyes; jaws muscles rigid, nose poked out, tail quickness,  
Dullness, quickly followed by franticness,  
Dry cough, difficulty in respiration,  
Fever, stands wide before, heaves his flanks, never lies down,  
Great drowsiness, low pulse, head fixed against the manger or wall, cough  
Fever, gripe gradual and unremitting, never rolls, some times great purging  
No fever, gripe sudden and remitting, rolls over, extreme pain, belly tight  
Purges in small quantities at every moment, sickness or fever,  
Discharge of greasy matter or blood from the dung, costiveness, fever,  
Belly swelled, dung dry and hard,  
Worms expelled, coats stare, eye dull, glazed, great appetite,  
Rumbling bowels, legs belly, &c. swell  
fever, constipation,  
Membranes of nose and mouth yellow, pain, fever, generally costive,  
Constant desire to stare, urine high  
fever, pain on the loins, thirst,  
Frequent straining, little voided, gr

LIVER.

Constipation, Costiveness, Worms, Dropsy, Water Farcy,  
  
Inflammation of Liver, Jaundice or Yellows,  
Inflammation of Kidneys, red water, bloody urine,  
Strangury or suppression of urine,  
Diabetes or profuse Staling,

Confinement, too little water, dry feeding, Unwholesome diet, bad water,  
  
Chronic Debility, fevers,  
Immoderate feeding, biliary obstruction,  
Strong diuretics, excessive exertion, atral,  
Over distension of bladder, pressure on its neck calculus,  
Too strong diuretics, bad hay,  
Confinement, high feeding, tight collar in harness,  
Plethora, hard work, external injuries,  
Neglected cold, constitutional liability,

Increased flow of urine, great debility  
Drowsiness, eyes blood-shot, delirium  
White film on the eyes weeping,  
Cough, sore throat, swelling and abscess under jaw,  
Nasal ulcers and discharge, hard under jaw, no fever, ill condition  
Difficulty in swallowing, cough, fever  
Off red, swelling of roof of mouth or

KIDNEYS & BLADDER.

Inflammation of the Brain, Meagrim, Mad Staggers,  
Inflammation of the Eye, sore eyes, Ophthalmia,

Neglected cold, constitutional liability,  
Neglected cold, or water farcy, contagion,  
Cold or chill, violence in giving a ball,  
Cutting of the teeth, indigestion,

EYE.

Strangles,  
Glanders,  
Sore Throat, Quinzy,  
Lampas, Sore Mouth,

THROAT.

MOUTH.

et. largement on heels, fore ft only  
great pain and lameness, goes on  
heels,  
r in the trot that walk, foot hot,  
ness, goes on the heels,  
oblong, instead of round,  
spot in sole, two bars and crust,  
lameness,  
ure or crack in hoof downwards,  
ation of sensible sole or laminae,  
arge from cleft of the frog,  
ness, pipes or sinews in the foot,  
ness after shoeing, finch from pressure,  
tude, shivering, quick pulse and  
breathing, off feet  
r, cough, nasal discharge of a brown  
color,  
and breathing greatly hurried, lies  
flat and sweats,  
protrudes over the eyes; jaws stiff,  
cles rigid, nose poked out, tail quivers,  
ness, quickly followed by frantic mad-  
ness,  
cough, difficulty in respiration,  
r, stands wide before, heaves hard at  
flanks, never lies down,  
t drowsiness, low pulse, head forced  
against the manger or wall, costive,  
r, gripe gradual and unremitting,  
never rolls, some times great purging,  
fever, gripe sudden and remitting,  
rolls over, extreme pain, belly tense,  
ness in small quantities at every move-  
ment, sickness or fever,  
large of greasy matter or blood with  
the dung, costiveness, fever,  
swelled, dung dry and hard,  
ms expelled, coat stares, eye dull and  
glazed, great appetite,  
abling bowels, legs belly, &c. swelled,  
fever, constipation,  
branes of nose and mouth yellow,  
pain, fever, generally costive,  
stant desire to stare, urine high color,  
fever, pain on the loins, thirst,  
quent straining, little voided, gripes,  
reased flow of urine, great debility,  
swissness, eyes bloodshot, delirium,  
white film on the eye, weeping,  
gh, sore throat, swelling and abscess  
under jaw,  
al ulcers and discharge, hard lumps  
under jaw, no fever, ill condition,  
icalty in swallowing, cough, fever,  
red, swelling of roof of mouth or palate

ring and blistering, or apply No. 20. If  
chronic, nervine.  
Apply high heeled shoe, and nerve the horse.  
Bleed largely from feet and neck, poultice,  
give No. 1 and 6.  
Poultice, or cut a seton thro' the frog, rest.  
Seton through the frog, heeled shoe, nervine.  
(Frog pressure. Thin sole and quarters,  
and keep feet moist. Apply tips or  
spring shoes and No. 19.  
Rasp crust, app. No. 19, bind tight with cords.  
Keep dry. Remove under run horn. Ap-  
ply No. 3 or 30. Dress daily.  
Remove the rotten horn, apply No. 24 or 20.  
Poultice, syringe with No. 24, dress with No.  
14 and bandage.  
Draw the nail, apply No. 14, or some tar  
and turpentine.

Gen'l Directions.—In all cases of fever  
and inflammation, bleed, open the bow-  
els by clysters and laxative medicine.—  
Keep body and extremities warm by  
clothing and hard rubbing. Diet, green  
meat or bran mash; chilled water,  
and keep the animal as quiet as possi-  
ble. In fevers of long standing, tonics  
and malt mashies.

Bleed, unless very weak. Give No. 8, steam  
the head.  
Copious bleeding and clysters; avoid purging.  
Find the cause. Give No's 1 and 11. Se-  
tons along the spine, never bleed.  
No cure. Preventives—exercise or apply  
strong caustics to the bitten part.  
No's 1 and 7 or No. 5; regular and moderate  
diet and work.  
Bleed copiously, No. 10 twice a day, blister  
sides, cool air, avoid purging.  
Bleed, give linseed jelly clysters, No. 1 and  
muzzle foment belly, seton poll.  
Copious bleeding, No. 8, oily clysters, scald  
the belly, linseed drinks.  
No. 4, back rake, clysters and exercise.  
Give No. 12 or some port wine, keep body  
warm, astringent clysters.  
Bleed, give castor oil, linseed jelly, and cly-  
sters, and cordials or astringents.  
Mashes or green meat, clysters and exercise.  
No. 10 at night, No. 1 next morning fasting.  
Lance swellings, and apply No. 22, give No's  
6 and 3 or 5, nourishing diet.  
Bleed, give No. 1 and clysters, low diet.  
Bleed, give No's 1 and 10. Stimulate the  
loins.  
Give No. 1, cold clysters, pass catheter.  
Give No's 1 and 11. Rest and warm clothing.  
Copious bleeding with physic, give No. 10  
low diet.  
Bleed, scarify the eyelid, give No. 1, apply  
No. 25. Hot fomentations.  
Blister throat, give No's 8 and 3, warm clo-  
thing, nourishing diet, never bleed.  
Sulphate of copper, or incurable.  
Bleeding, cool air, give No. 8, apply No's 23  
or 16.  
Bleed in the mouth, give No. 1 and soft meat

give one morning and evening till the bowels are re-  
laxed; then give No. 6 or 10.  
No. 10.—**SEDATIVE and WOUND OIL.**—Powdered  
white hellebore,  $\frac{1}{2}$  dr.; linseed powder,  $\frac{1}{2}$  oz. If  
necessary, make into a ball with treacle. This ball  
is a specific for weed. Two oz. of oil of turpentine  
in  $\frac{1}{2}$  bottle of linseed oil, is an effectual remedy for  
worms in horses and cattle.  
No. 11.—**ANODYNE BALL.**—Opium, 1 dr., camphor,  
2 dr.; ginger powder  $1\frac{1}{2}$  dr.; treacle to form a ball.  
Give night and morning after the bowels are open-  
ed, in tetanus or lock-jaw. With the addition of  
powdered catechu, two drams, this forms an excel-  
lent cure for diarrhoea or purging.  
No. 12.—**CORDIAL ASTRINGENT DRENCH, for Diarrhoea,  
Purging, or Scouring.**—Tinct. of opium,  $\frac{1}{2}$  oz.;  
allspice,  $2\frac{1}{2}$  dr.; powdered caraway, 3 oz.; catechu  
powder, 2 dr.; strong ale or gruel, 1 pint. Give ev-  
ery morning till purging ceases. For sheep this  
will make 4 doses.  
No. 13.—**DIGESTIVE or ISSUE OINTMENT.**—Equal  
parts of common turpentine and hog's lard melted  
together.  
No. 14.—**OIL FOR WOUNDS.**—Oil of thyme,  $\frac{1}{2}$  oz.;  
neat's foot oil, 1 pint. Mix and add by degrees oil of  
vitriol, 6 dr.; stirring till well mixed, then bottle it  
for use. For wounds in feet and all foul sores.  
No. 15.—**MANGE OINTMENT.**—Powdered Aloes, 2  
dr.; white hellebore, 4 dr.; sulphur, 4 oz., lard or  
train oil, 6 oz. For the red mange in dogs, add 1  
oz. of mercurial ointment, and muzzle the dog. By  
a single thorough dressing with this ointment, I have  
cured many a bad case of mange.  
No. 16.—**BLISTER OINTMENT.**—Hog's lard, 4 oz.;  
oil of turpentine and Spanish flies, each 1 oz.; mix.  
This ointment is strong enough for every purpose.  
No. 17.—**POWDER FOR ANGLEBERRIES.**—After cut-  
ting them off, or when they exist in clusters, sprinkle  
them daily with equal parts of muriate of ammonia  
and powdered savin.  
No. 18.—**OINTMENT FOR MALANDERS, &c.**—Mercurial  
ointment, 1 oz.; sulphate of zinc, 1 dr.; mix and  
apply daily, after washing and drying the part.  
No. 19.—**TAR OR HOOF OINTMENT.**—Tar and Tallow  
each 1 lb.; common turpentine,  $\frac{1}{2}$  lb.; melt togeth-  
er. For dressing feet, cracked heels, &c.  
No. 20.—**ASTRINGENT OINTMENT.**—Tar 4 oz.; spirit  
of salt and verdigrise, each 1 oz.; mix. For thrush,  
grease, grapes, canker and loo in cattle. For the  
latter, No. 13 is a specific.  
No. 21.—**OINTMENT FOR SWOLLEN UDDER.**—Marsh-  
mallow ointment, 4 oz.; olive oil, 1 oz.; oil origanum,  
2 dr.; camphor, 2 dr.; mix. To be firmly rubbed on  
the affected part twice a day after drawing the milk.  
No. 22.—**LOTION FOR STRAINS, TUMORS, &c.**—Nitric  
and muriate of ammonia, each 1 oz. Dissolve in a  
quart of hot water, and add two quarts of vinegar.  
No. 23.—**EMBRICATIONS for Strains, &c.**—Olive oil  
6 oz.; aqua ammonia, 2 oz.; oil of turpentine, 1 oz.;  
origanum, 2 dr. Shake the bottle well before being  
used, and rub the part with it twice a day till it be-  
comes hot and tender. Observe rest.  
No. 24.—**MIXTURE for Grease, Ulcers, and all Foul  
Sores.**—Sulphate of zinc, 1 oz.; corrosive sublimate,  
1 dr.; spirit of salt, 1 dr.; water 1 pint, mix.  
No. 25.—**EYE LOTION.**—Sulphate of zinc, 1 dr.;  
water, 1 pint; tincture of opium, 1 dr.; mix and ap-  
ply two or three times daily.  
No. 26.—**OINTMENT for Bony Enlargements.**—Bin-  
iodide of mercury, 1 dr.; lard, 4 drams. To be rub-  
bed on the affected part twice a week. Two or three  
applications will be sufficient.



